



# GENERAL CATALOGUE

Service Machines for Ski & Snowboard

Accessories & Consumables

Rent & Depot Systems

**Reichmann**  
SKI & BOARD TUNING



Reichmann+Jahn

R



# CONTENT

THE COMPANY	4-5
INTRODUCTION TO MACHINERY	6-7
INTRODUCTION TO AUTOMATION	8-9
SERVICE CENTER SF-4 RACE	10-17
INTRODUCTION TO SINGLE MACHINES	18-19
LASER STRUCTURE MACHINE LS-1 RACE	20-21
RACE MACHINES PROFI S200/350 RACE RACE FEED	22-27
BELT-STONE GRINDING MACHINE PROFI 4 VARIO	28-31
BELT GRINDING MACHINES PROFI B VARIO PROFI B PROFESSIONAL PROFI B CUB	32-39
EDGE TUNING MACHINES DTS-U II RACE DTS II RACE KFM-U KSM	40-49
WAXING ALTERNATIVE GLIDE MASTER	50-51
WAXING MACHINES RACE WAXER BWM 350 C DIGITAL WAXFUTURE WALL SPEED	52-57

58-59	BASE REPAIR DEVICES POLYMAT 1 & 2
60-65	WORKSHOP EQUIPMENT 60-61 MULTIFUNCTIONAL WORKBENCH 62-63 SKI & SNOWBOARD BOOT CLEANER 64-65 COMPRESSORS & DRYERS
66-67	RACE EQUIPMENT COOLING
68-69	SERVICE CONTRACT
70-110	ACCESSORIES & CONSUMABLES 70-71 INTRODUCTION 72-73 SPARE & WEAR PARTS 74-79 BINDING FITTING & BINDING BRIDGES 80-81 BASE REPAIR 82-86 EDGE TUNING - PREMIUM 87-93 WAXING ACCESSORIES 94-95 WATER TREATMENT & CLEANING 96-97 DISINFECTION & WORKSHOP REQUIREMENTS 98 MACHINE ACCESSORIES 99-101 GRINDING BELTS 102-103 DRESSING DIAMONDS 104-107 GRINDING STONES 108-109 GRINDING DISCS & DRESSING DIAMONDS 110 MARKETING SUPPORT
111-153	RENT & DEPOT SYSTEMS 111-117 INTRODUCTION RENT 118-121 EASY 122-123 TOP 124-125 SNOWBOARD 126-129 UNIVERSAL 130-131 BIKE 132-133 WALL LEVELS 134-135 BOOT & HELMET 136-141 BOOT DRYER & DISINFECTION 142-147 INTERIOR 148-153 DEPOT DEPOT LOCKERS
154-155	NOTES / ORDER FORM



Reichmann & Sohn GmbH is a family-owned company based in Weissenhorn, Bavaria. Since its founding in 1918, the company's core competencies have been grinding and cutting. Reichmann currently employs around 80 people in three independent business units for customers all over the world:



Service machinery, accessories and storage systems for skis & snowboards



Grinding machines for fettling technologies and casting finishing



Grinding, polishing and cut-off machines for the metal manufacturing sector

### **REICHMANN – PASSION FOR THE ULTIMATE TUNE**

In 2018, Reichmann celebrated its 100th anniversary. From 100 years of experience and passion, Reichmann has been continuously creating innovative and high-quality customer solutions. The family business is now run by the fourth generation and attaches great importance to personal and cooperative dealings with customers and suppliers as well as with each other. The location in Weissenhorn invests heavily in research and development in order to offer tailor-made products for your needs. Feedback from customers about sales and service flows directly into the development of new machines. To ensure the high quality standard, Reichmann machines are "Made in Germany".

If you'd like to know more about us, visit us at [www.reichmann.com](http://www.reichmann.com) or follow us on Social Media!











# SKI & BOARD TUNING

## Take your ski service to the next level.

A ski service machine is an investment in your future - to make your dream come true, we put a lot of experience and knowledge into our machines. We will support you in any way that we can. You have enough things to think about and concerns about your machinery shouldn't be one of them. For this reason, we use only high-quality products and manufacture the components ourselves at our location in Weissenhorn. This allows us to influence the quality standard ourselves and thus ensure that only the best products are processed in your machine. For parts that we do not manufacture ourselves, we look for partners who meet our high standards and work directly with many reputable manufacturers.

Nobody needs a stable machine without technical progress. That's why Reichmann works closely with national and international partners such as ski and snowboard associations as well as world cup professionals. With their ideas and our experience we work together to continuously improve our products. Afterwards we will bring the new solutions from the world cup directly into your workshop.

On the following pages we present you our latest developments, which take your ski service to a new level.







# AUTOMATION

## flexible adaptation to your needs

A Reichmann service machine is an ideal solution for smaller as well as large service workshops or rental companies. With a robot you solve personnel shortages, reduce long working hours and save money. Personnel savings and particularly efficient processes ensure that your investment pays off within a very short time. From small to very large service amounts - we will find the right service robot to fit your requirements. So you will benefit from the advantages that are really important to you.

Discover our SF-4 RACE in numerous expansion stages and convince yourself of our state-of-the-art machine.

**CHRISTIAN HUPFAUER**

Race-Boarder, Snowboard Germany



# SF-4

## the top level robot

The development of the SF-4 focused on efficiency, quality and optimal space utilization. The service robot supports ski rental companies and sports shops with medium to large service loads (depending on the level of expansion 1,500 to 40,000 skis or boards/season) optimally. It unites easy handling, shortest processing times, low maintenance costs and perfect, reproducible grinding results.



### Intuitive operation

The stored structure library and sequence programs are easily selectable on the intuitively operated touch panel.



### Innovative transport system

Safe pick-up and transport of various skis and boards regardless of shape, length and surface.



### Flexible variants

Combination of different modules and options for a machine according to your needs.

# SF-4 1-4 modules

## versatile combinable

The SF-4 RACE service center can be optimally adapted to your needs with various modules and options, setting new standards in quality.



### a Stone module for skis

A special highlight are the two grinding stones arranged in parallel. The pre-grinding and structure grinding of the skis takes place in just one operation, which saves a considerable amount of time compared to other service robots.



### b Stone module for skis & boards

On the 350 mm / 1'2" wide grinding stone versatile structures can be ground. This gives the sports equipment optimum gliding properties and guarantees satisfied customers. When processing skis, pre-grinding and finishing structures can be used in parallel for the highest efficiency.



### c Edge module for skis & boards

The HQT edge technology gives you precise, burr-free and ready-to-race skis and snowboards while at the same time being gentle on the material. A particularly wide range of winter sports enthusiasts can be served with regard to driving skills (from beginners to race-oriented riders) and ski types (freeride, carving, all-mountain, race).



- a** **STONE MODULE**  
for skis  
2 x 165mm / 6" stones + 2 dressers
- b** **STONE MODULE**  
for skis & boards  
350 mm / 1'2" stone
- c** **EDGE MODULE**  
for skis & boards  
HQT for side and base edge
- d** **WAXING MODULE**  
for skis  
waxing and brushing



**d** **Waxing module for skis**

With the new wax module you cover another ski service step in the service center. Waxing and brushing takes place in just one machine run. Save yourself time-consuming, manual waxing and get ready-to-race skis directly out of the machine.

## Technical Data

	one module	two modules	three modules	three modules (with waxing module)	four modules (with waxing module)
Dimensions (L x W x H) mm/ft	4960 x 1745 x 2050 / 16'3" x 5'9" x 6'9"	5840 x 1745 x 2050 / 19'2" x 5'9" x 6'9"	6720 x 2185 x 2050 / 22'1" x 7'2" x 6'9"	6720 x 2185 x 2050 / 22'1" x 7'2" x 6'9"	7600 x 2185 x 2050 / 24'11" x 7'2" x 6'9"
with one-sided loading mag. <sup>1</sup>	5150 x 2295 x 2325 / 16'11" x 7'6" x 7'8"	6030 x 2295 x 2325 / 19'9" x 7'6" x 7'8"	6910 x 2295 x 2325 / 22'8" x 7'6" x 7'8"	6910 x 2295 x 2325 / 22'8" x 7'6" x 7'8"	7790 x 2295 x 2325 / 25'7" x 7'6" x 7'8"
Weight in kg / lb	2000 / 4409	2700 / 5952	3500 / 7716	3400 / 7496	4200 / 9259
with loading mag. <sup>2</sup> in kg / lb	2600 / 5732	3300 / 7275	4100 / 9039	4000 / 8818	4800 / 10582
Connecting voltage (EU-data)	400 V, 3PH/N/PE, 50 Hz	400 V, 3PH/N/PE, 50 Hz	400 V, 3PH/N/PE, 50 Hz	400 V, 3PH/N/PE, 50 Hz	400 V, 3PH/N/PE, 50 Hz
Connecting voltage (US-data)	230 V, 3PH/N/PE, 60 Hz	230 V, 3PH/N/PE, 60 Hz	230 V, 3PH/N/PE, 60 Hz	230 V, 3PH/N/PE, 60 Hz	230 V, 3PH/N/PE, 60 Hz
Connecting power in kW	5.5	8	12.5	17.5	21.5
with loading magazine	7	9.5	14	19	23
Coolant tank appr. in l / gal	480 / 127	480 / 127	480 / 127	480 / 127	480 / 127

<sup>1</sup> additional 355 mm / 1'2" width with double-sided loading magazine

<sup>2</sup> Weight without ski transport carriage and without water tank volume

Compressor required. Look at p. 64-65.

# SF-4

## loading variants

Depending on the throughput and configuration level of your service center, choose between three different loading variants.

## Facts

Cycle time (maximum)	60 Ski/h
Profitable with service load per season	1,500 - 40,000
Possible processing of ski with length of	0.9 - 2.15 m



### a Standard loading

The pairwise ski input and output of up to 4 pairs of skis per run allows a comfortable and efficient work. For even higher throughput, the loading Plus offers a useful extension.



### b Loading Plus

The extended load provides space for simultaneous ski input and output of up to 6 pairs of skis. This gives you more time for ancillary jobs while working with the machine. From the 3-module expansion stage, the loading Plus is integrated as standard.



### c Autonomous loading magazine

The autonomous loading magazine uses a flexible ski transport carriage, which can be driven to the machine and easily docked. This saves the service employee the complete time to load and unload the skis into and out of the machine.

# Autonomous loading magazine

The flexible robot, which loads and unloads itself

With the brand new loading magazine for the SF-4 RACE, the ski input and output is completely automated from a flexible ski transport carriage. Place the skis to be processed directly in the ski transport carriage at the ski service counter. The filled carriage can then be driven to the machine and easily docked, which eliminates time-consuming reloading. After docking, the service machine will do all the work by itself - including the pairwise input of the skis in the machine and the paired return to the transport carriage. Your service staff can take care of other important tasks during this time.



## Loading out of a flexible transport carriage

Choose between a single-sided carriage for 8 pairs of skis or alternatively the double-sided variant with a capacity of 16 pairs of skis for even greater time savings. For flexible use, the carriages are equipped with mobile wheels. So the skis can be placed in the carriage at the ski service counter or in various shops and transported to the machine.



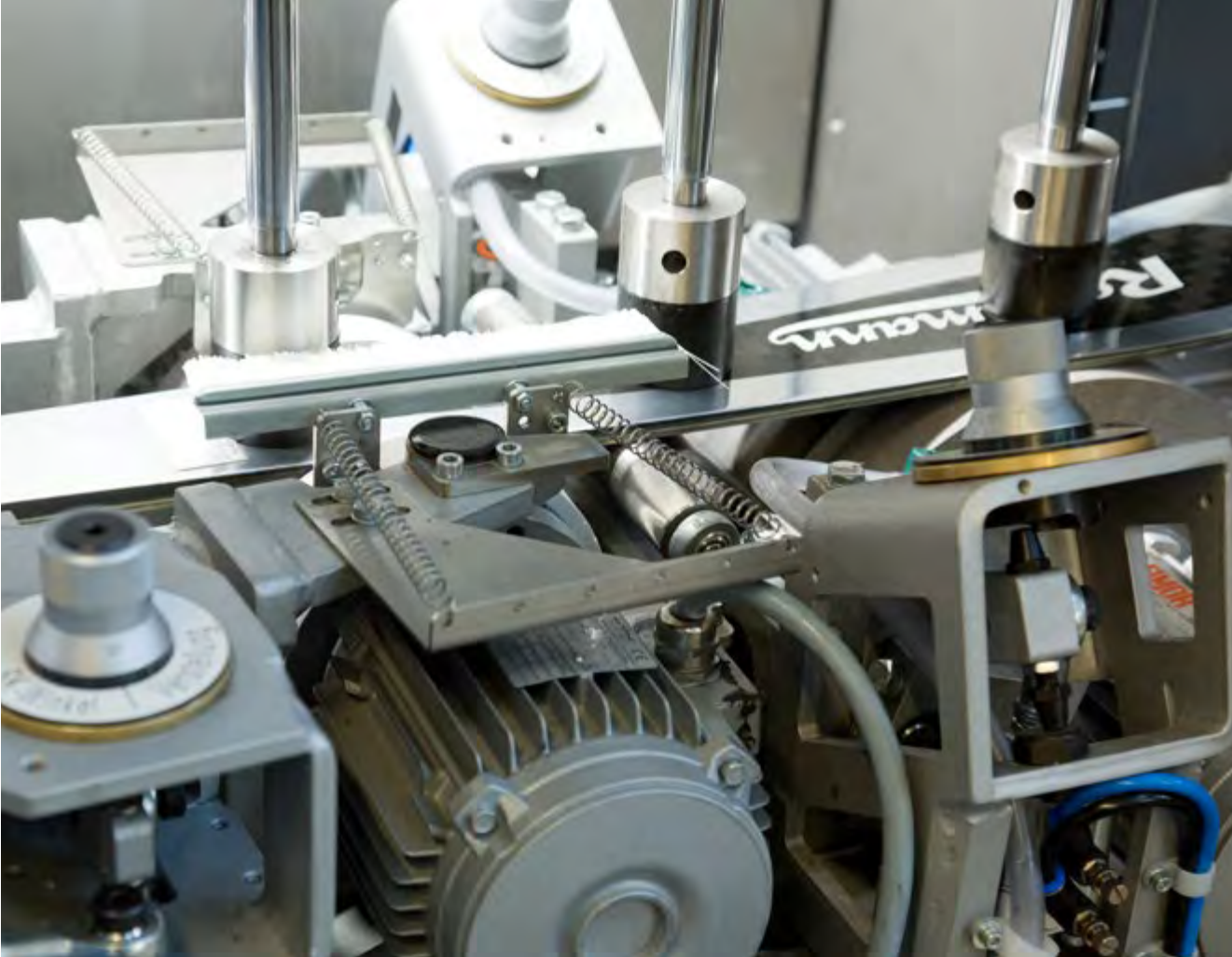
# SF-4 For every requirement a suitable expansion stage



## PRODUCT FEATURES

PRODUCT FEATURES	4 modules		3 modules					2 modules		1 module	
	SF-4 2S-2S-K-W RACE	SF-4 S-2S-K-W RACE	SF-4 2S-K-W RACE	SF-4 S-K-W RACE	SF-4 2S-2S-K RACE	SF-4 S-2S-K RACE	SF-4 S-S-K RACE	SF-4 2S-K RACE	SF-4 S-K RACE	SF-4 2S RACE	SF-4 S RACE
Double stone module for skis (2 x 165 mm / 6" stones)	● ●	●	●		● ●	●		●		●	
Module with 350 mm/1'2" wide stone for skis & boards		●		●		●	● ●		●		●
HQT edge module for side and base edges	●	●	●	●	●	●	●	●	●		
Waxing module	●	●	●	●							
snowboard transport system		●		●		●	●		●		●
Transport regardless of shape, length & surface	●	●	●	●	●	●	●	●	●	●	●
Automatic ski length and width recognition	●	●	●	●	●	●	●	●	●	●	●
RACE package	●	●	●	●	●	●	●	●	●	●	●
Intuitive operation	●	●	●	●	●	●	●	●	●	●	●
Loading PLUS	●	●	●	●	●	●	●	○	○	○	○
Loading magazine	○	○	○	○	○	○	○				
Ski drying	○	○	○	○	○	○	○	○	○	○	○
Automatic filter system	○	○	○	○	○	○	○	○	○	○	○
Cooling unit	○	○	○	○	○	○	○	○	○	○	○
	HIGH SERVICE AMOUNT		MEDIUM SERVICE AMOUNT					SMALL SERVICE AMOUNT			
	●-----○										
	MINIMUM PERSONAL DEPLOYMENT ALL SERVICE STEPS IN ONE MACHINE					STAFF SAVINGS QUALITY CONTROL AFTER IMPORTANT SERVICE STEPS					

● included ○ optionally available



## RACE - PACKAGE for edge module

- two different side or base edge angles easily adjustable at the touch panel
- variable speed for side and base edge tuning disc ensures an accurate edge result
- automatic grinding pressure control provides a constant and precise side edge finish



## RACE - PACKAGE for stone modules

- NC drive of the dresser unit
- automatic width detection of the ski and adjusting of the pressure curve on ski width and type
- Race structure package









# SINGLE MACHINES

## maximum quality control

With a Reichmann single machine you have the maximum control over your service results. Customize the ski service for your customers individually to the driving skills, the snow conditions, the sports equipment or the customer's request. You decide for every working step - choose your preferred edge angle, the desired grinding structure as well as the wax for each service individually. Additionally, you have the option to check the quality of the service after each working step. This way, you achieve exact results while at the same time provide a gentle processing on the materials.

Discover our current single machine portfolio on the following pages.



## LS-1 RACE

A new generation of base structuring:  
Revolutionary laser structures for skis

The new LS-1 RACE revolutionizes traditional stone grinding and sets new standards in precision, reproducibility, individuality and environmental friendliness. The laser technology enables precise and exactly reproducible structures for skis in all imaginable variants. This opens up completely new possibilities for racing departments, ski manufacturers as well sports shops and rental companies in terms of driving performance, design and quality. The LS-1 RACE is also forward-looking with regard to the environment, as the laser works in dry processing.

### UNLIMITED VARIETY OF STRUCTURES

In comparison to traditional stone grinding, the new laser technology can apply not only classical linear cuts, but also angles, bows, letterings or company logos on the ski surface. The laser structure is also variable in depth, enabling spectacular 3D effects. There is no limit to your imagination and individuality - look forward to an unlimited variety of structures in the highest laser precision!



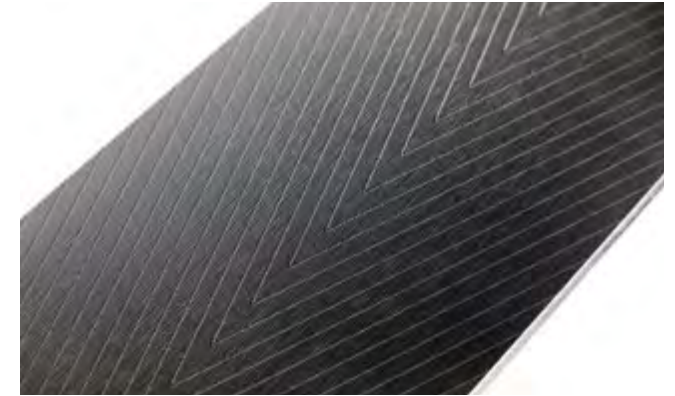
### High user comfort

The LS-1 RACE works in dry machining. This eliminates unwanted side effects such as spray water, wet skis and corrosion. In addition, no binding bridge is required for the ski transport.



### Precise, borderless structures

The laser offers the option of structuring the ski surface borderless, without affecting the edge. The distances of the cuts are freely selectable.



### Complete preservation of the basic structure

Unlike with stone grinding, the basic structure is preserved completely in the gaps between the laser cuts. This simplifies your service work.

## Usage from the top-level sport to the ski rental

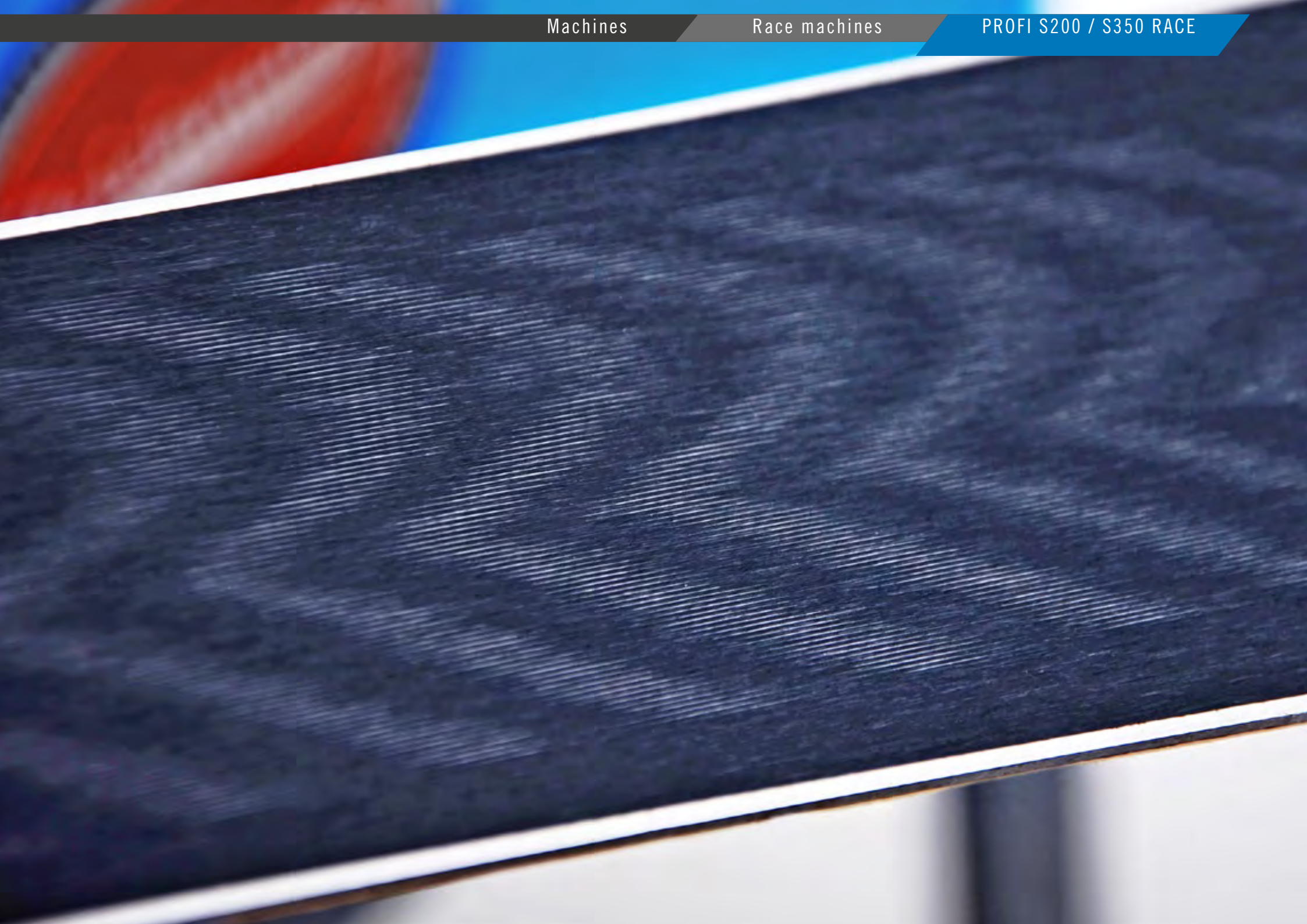
Especially in elite sports, the highly precise and exactly reproducible laser structures with guaranteed fiber-free gliding surfaces can bring a decisive advantage. In addition to racing, the LS-1 RACE is also suitable for sports shops or rental shops that want to offer their customers something special. In the ski rental, for example, the rental skis can be branded with the application of the company logo and at the same time protected against theft.

On the extra large control panel with integrated storage space for keyboard and mouse you can easily create your own structures and transfer them directly to the ski. This possibility sets the variety no limits. After manual entry of the ski, the machine automatically measures the ski and starts the automatic transport process.

## Technical Data

Item Number	1074983
Dimensions (L x W x H) folded out in mm / ft folded in in mm / ft	3040 x 1180 x 1780 / 10' x 3'10" x 5'10" 1115 x 1180 x 2200 / 3'8" x 3'10" x 7'3"
Weight in kg / lb	500 / 1102
Connecting voltage (EU-data)	400 V, 3 PH/N/PE, 50 Hz
Connecting voltage (US-data)	230 V, 2 PH/PE, 60 Hz
Connecting power in kW	2.2
Connecting plug	CEE 16A 5-pin.







# PROFI S200 / S350 RACE

## Our Race machines

The PROFi S200 and PROFi S350 RACE are the structural wonders among our stone grinding machines. This is a result of close cooperation with different ski producers, snowboard associations, race departments and world cup specialists. The machines are equipped with parameterized racing structures for the Alpine and Nordic sector (S200 RACE) or the Alpine and Snowboard sector (S350 RACE). The triple jewel bearing and the programmable grinding pressure curve allows accurate structures. With a Reichmann PROFi S200 / 350 RACE you have the opportunity to offer your customers professional racing service for their customer or rental skis.

### REPRODUCIBLE STRUCTURES FOR SPECIALISTS

The conception of both machines has been thought out to the tiniest detail. By the use of our structure development platform "PatRich" you can create structures effortlessly without any material wear. The structure library includes all variations for customers of all types.



**CHRISTIAN HUPFAUER**  
Race-Boarder, Snowboard Germany



**CHEYENNE LOCH**  
Race-Boarder, Snowboard Germany



# PROFI S200 / S350 RACE

## Our race machines

The color 8" touch-panel enables you (by an integrated structure consultant) to find the structures that fit to your customer's needs. There is still enough memory capacity to save your own structures to adapt to sophisticated target groups.

Furthermore the split structure option of the 200 mm / 7.9" or 350 mm / 1'2" stone enables a one-step pre-grinding and finish structure, without wasting time and material.

## Technical Data

	S200 RACE	S350 RACE
Item Number	1049551	1049552
Dimensions (L x W x H) in mm / ft	1475 x 900 x 1150 / 4'10" x 2'11" x 3'9"	1475 x 900 x 1150 / 4'10" x 2'11" x 3'9"
Weight in kg / lb	450 / 992	500 / 1102
Connecting voltage (EU-data)	400 V, 3 PH/N/PE, 50 Hz	400 V, 3 PH/N/PE, 50 Hz
Connecting voltage (US-data)	230 V, 3 PH/N/PE, 60 Hz	230 V, 3 PH/N/PE, 60 Hz
Connecting plug (distribution only in the EU)	CEE 16A 5-pin.	CEE 16A 5-pin.
Rotational speed rpm	stepless	stepless
Connecting power in kW	5	5
Coolant tank approx. in l / gal	95 / 25	95 / 25
Grinding stone in mm / ft	Ø 300 x 200 / Ø 11.8" x 7.9"	Ø 300 x 350 / Ø 11.8" x 1'2"
Dressing speed	stepless adjustable	stepless adjustable
Feed speed	stepless adjustable	stepless adjustable
Grinding pressure feed in kg / lb	0 - 50 / 0 - 110	0 - 50 / 0 - 110

Compressor required. Look at p. 64-65.

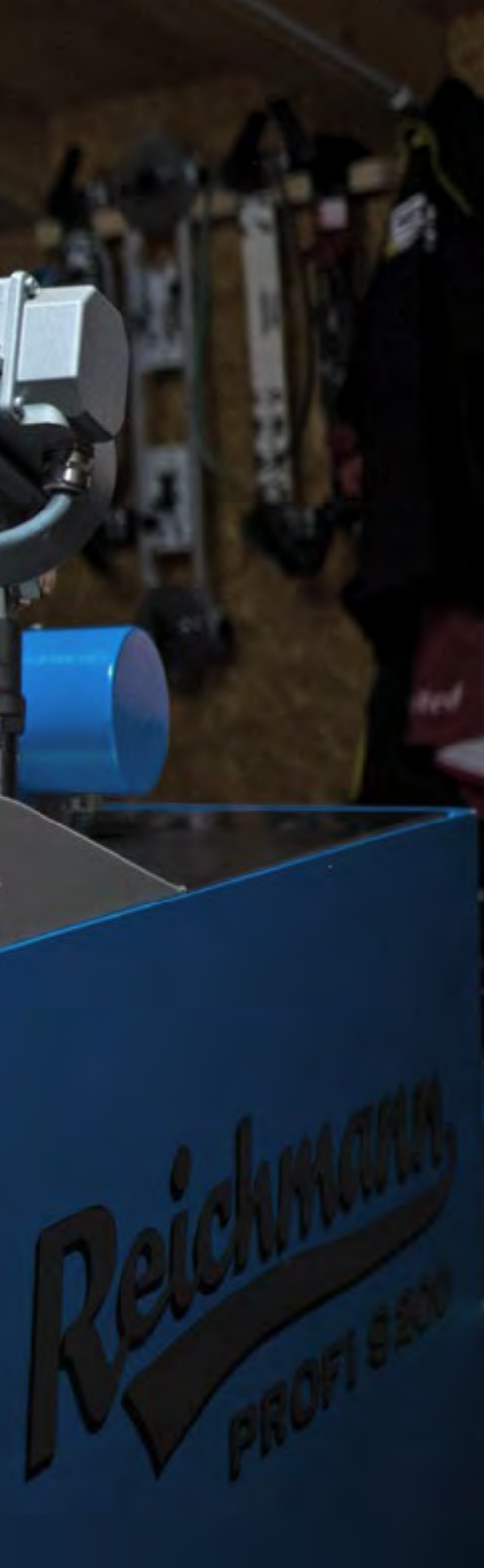


Due to the 3-point centering you will get reproducible and precise symmetric structures every time – also by using it split.



The integrated structure consultant makes it easy to find the right structure.





# RACE FEED

For a perfect race result  
with your PROFI S200 RACE

You like to get the best out of your PROFI S200? Then the RACE FEED is just right for you.

Due to an individual pressure regulation at the feed wheel you can perfectly adjust to the situation. Thereby the result of the structure will be even more precise and you can offer your customers world cup level service. You will also get smoother transfers at the contours on the ski bases.

Convince yourself and get the most out of your PROFI S200 RACE.

	Item-No.
Race feed aluminum	1041939





**CAROLIN LANGENHORST**  
Race-Boarder, Snowboard Germany

# PROFI 4 VARIO

## Belt-stone-combination for skis and boards

The PROFI 4 is a combined stone-belt grinding machine that fulfills all wishes regarding ease of operation due to the many pneumatic features. With its inline stone and belt the PROFI 4 is a real space saver and can even be installed directly against a wall. If you choose the machine with the optional side edge grinding device (87° to 90° angle) you get a central working station for all required preparation steps for professional ski and snowboard service.

This machine gives you the opportunity to make a rapid switch between belt and stone without taking the ski or snowboard out of your hands. By only pressing a button you can change the feed arm from belt to stone and back effortlessly. The independent pneumatics accurately adjust the grinding pressures for stone and belt. The aluminum feed roller is divided into three parts to compensate convex and concave snowboards.

# Reproducible structures & user comfort

The 8" color touch panel is ergonomically designed and located near the stone to enable the perfect choice when deciding on various structures. The onboard computer has an entire library of various stored structures and there are structure options for every skier and snowboarder. There is still enough memory capacity to save your own structures to adapt to sophisticated customers. Equipped with a 350 mm / 1'2" wide stone, the PROFI 4 can handle skis and snowboards with ease. Furthermore the split structure option enables a one-step pre-grinding and finish structure, without wasting time and material.

## Technical Data

	without side edge	with side edge
Item Number	1071451	1071257
Dimensions (L x W x H) in mm / ft	2080 x 880 x 1405 7' x 2'11" x 4'7"	2080 x 1040 x 1405 7' x 3'5" x 4'7"
Weight in kg / lb	700 / 1543	800 / 1764
Connecting voltage (EU-data)	400 V, 3 PH/N/PE, 50 Hz	400 V, 3 PH/N/PE, 50 Hz
Connecting voltage (US-data)	230 V, 3 PH/N/PE, 60 Hz	230 V, 3 PH/N/PE, 60 Hz
Connecting plug (EU)	CEE 16A 5-pin.	CEE 16A 5-pin.
Engine speed (stone unit) rpm	stepless	stepless
Engine speed (belt unit) rpm	stepless	stepless
Engine speed (side edge unit) rpm	-	1370 (EU) / 1630 (US)
Connecting power in kW	4.5	4.95
Coolant tank appr. in l / gal	125 / 33	125 / 33
Grinding stone in mm / ft	Ø 300 x 350 / Ø 1' x 1'2"	Ø 300 x 350 / Ø 1' x 1'2"
Grinding belt in mm / ft	350 x 1500 / 1'2" x 4'11"	350 x 1500 / 1'2" x 4'11"
Side edge tuning belt in mm / ft	-	20 x 1200 / 0.8" x 3'11"
Dressing speed	stepless	stepless
Grinding pressure feed in kg / lb	0 - 70 / 0 - 154	0 - 70 / 0 - 154

Compressor required. Look at p. 64-65



Belt and stone grinding effortlessly with one machine, thanks to the swiveling feed arm at the touch of a button. The optional side edge makes it an all-in-one machine.



The optional centering allows you to structure even more accurately - even when using a split-structured stone.

# PROFI 4 VARIO

Various equipment options for your needs



## PRODUCT FEATURES

	YOUR BENEFITS	PROFI 4 VARIO	PROFI 4 VARIO RACE
Automatic change from belt to stone	Fast and energy-saving operation	●	●
Pneumatically supported working steps	Efficient, fatigue-free working	●	●
Speed and contact pressure stored in programs	Intuitive operation for reproducible results	●	●
Dresser adjustment in one hundredth steps	The most precise structures can be realized	●	●
Integrated structure assistant	Structures adaptable to ski type and snow conditions	●	●
Water tank capacity of 125 l / 33 gal	Better water quality and less maintenance effort	●	●
Installation possibility on the wall	Space-saving operation from only one side	●	●
Divisible feed roller	Processing of convex & concave boards possible	●	●
Optional side edge	For space-saving all-in-one equipment	○	○
Ready-to-use belts	Suitable for direct use	●	●
Structure grinding on the belt side	Cost savings through lower stone consumption	●	●
Pre-grinding in high quality on the belt side	Smooth surface as optimal basis for structuring	●	●
Centering for skis and snowboards	For grinding symmetrical structures		●
Race structuring package	Structures for demanding target groups		●

● included ○ optionally available





## The new VARIO feature

The PROFI 4 VARIO combines the advantages of the PROFI 4 with the highlights of the new PROFI B VARIO. With this machine, you can pre-grind your skis and boards on the belt side in high quality with the newly developed "ready-to-use" belts from the PROFI B VARIO and, depending on your needs, also structure them on the belt side. This is a big advantage, especially for structuring convex or concave snowboards. At the same time you can reduce your stone consumption and thus save costs. For demanding, individual structures, you can easily change from belt to stone after pre-grinding with the belt.

## RACE - PACKAGE

- Race structure package
- easily adjustable centering for skis & snowboards

# PROFI B VARIO

## All-in-one grinding machine

Edge grinding, pre-grinding and structuring with one machine – the PROFI B VARIO makes this possible. With the compact grinding machine you need significantly less working steps and reach high-quality results similar to stone grinding. Due to the simple construction, the machine is very easy to maintain and guarantees highest availability at lowest maintenance costs. Especially for a limited amount of service work the PROFI B VARIO with its excellent price-performance ratio is the optimal solution for a universal application.

### REVOLUTIONARY GRINDING TECHNOLOGY „NEW BASE TECHNOLOGY“

In the PROFI B VARIO specially developed pre-grinding and structuring belts are used, which achieve an optimized gliding performance of the skis and boards - comparable to stone grinding results. This is based on the new grinding technology „New Base Technology“. Thereby, the pre-grinding belt creates a smooth surface which is perfectly suitable for structuring. With the following usage of the structuring belt you receive a structuring finish in premium quality.



**SELINA JÖRG**

Gold medal, Snowboard World Cup Park City 2019  
Race-Boarder, Snowboard Germany

# Efficient and ergonomic working

Due to the pneumatic pressure regulation and the integrated lifting device for the feed roller, the grinding pressures can be set even more precisely and the operator has to invest less power. This enables a faster and fatigue-free working and at the same time ensures a better grinding result. The pace of the grinding and feed motor is continuously adjustable; the structures can be chosen according to the different requirements. So the machine is individually customizable to the specific case of application.

## Technical Data

	<b>PROFI B VARIO</b> with feed	<b>PROFI B VARIO</b> with feed and side edge
Item Number	1068101	1067124
Dimensions (L x W x H) in mm / ft	1280 x 910 x 1405 / 4'2" x 2'12" x 4'7"	1280 x 960 x 1405 / 4'2" x 3'2" x 4'7"
Weight in kg / lb	420 / 926	475 / 1047
Connecting voltage (EU - data)	400 V, 3 PH/N/PE, 50 Hz	400 V, 3 PH/N/PE, 50 Hz
Connecting voltage (US - data)	230 V, 2PH/PE, 60 Hz	230 V, 2 PH/PE, 60 Hz
Connecting plug (EU)	CEE 16A 5-pin.	CEE 16A 5-pin.
Engine speed (belt unit) rpm	stepless	stepless
Engine speed (side edge unit) rpm	-	1380 (EU) / 1640 (US)
Connecting power in kW	3.5	4
Coolant tank approx. in l / gal	100 / 26	100 / 26
Grinding belt in mm / ft	350 x 1500 / 1'2" x 4'11"	350 x 1500 / 1'2" x 4'11"
Side edge tuning belt in mm / ft	-	20 x 1200 / 0.8" x 3'11"
Feed speed	stepless	stepless
Grinding pressure feed in kg / lb	0 - 60 / 0 - 132	0 - 60 / 0 - 132

Compressor required. Look at p. 64-65.



With the intuitively operable touch-panel the user can switch instantly between pre-grinding and structuring. Predesigned sequential programs secure consistently good grinding results independent of the user.



Grinding result with the PROFI B VARIO.





# PROFI B PROFESSIONAL

## Base tuning for skis and snowboards

The new PROFI B Professional sets new standards in terms of performance and ease of maintenance. The belt grinding machine has an extra-strong 11 kW drive motor to meet the high demands of ski and snowboard producers as well as power users. The enlarged water tank with a volume of more than 200 liters / 52.8 gal guarantees especially long service intervals and reduces your maintenance effort to an absolute minimum. Thanks to the robust design, you benefit from a long service life and a very high availability.

### **BELT GRINDING – VERSATILE APPLICABLE**

The PROFI B Professional is the ideal solution for efficiently pre-grinding the bases of skis and snowboards. Through the use of scotch and cork belts, the machine can also be used for finish grinding.

# Efficient and ergonomic working

The PROFI B Professional makes it easy for the operator. Within seconds, the grinding speed, feed speed and the grinding pressure can be changed. Pre-defined program sequences with fixed parameters ensure consistently good grinding results independently of the operator.

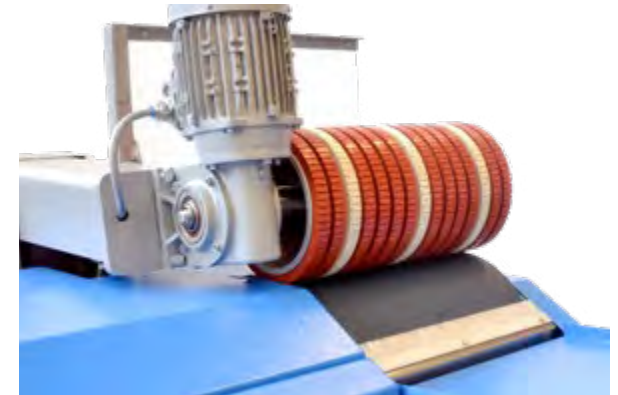
The pneumatic pressure control and lifting device for the feed roller ensure ergonomic working conditions and allow an even more precise grinding pressure regulation. The speed of the grinding and feed motor can be infinitely adjusted to individual requirements.

## Technical Data

### PROFI B PROFESSIONAL with feed, pneumatic lift, pneumatic contact pressure

Item Number	1075760
Dimensions (L x W x H) in mm / ft	2420 x 1040 x 1450 7'11" x 3'5" x 4'9"
Weight in kg / lb	700 / 1543
Connecting voltage (EU - data)	400 V, 3PH/N/PE, 50 Hz
Connecting voltage (US - data)	230 V, 3PH/N/PE, 60 Hz
Connecting plug (distribution only in the EU)	CEE 16A 5-pin.
Engine speed (belt unit) rpm	stepless
Connecting power in kW	12
Coolant tank approx. in l / gal	200 / 53
Grinding belt in mm / ft	350 x 2000 / 1'2" x 6'7"
Feed speed	stepless
Grinding pressure feed in kg / lb	0 - 70 / 0 - 154

Compressor required. Look at p. 64-65.



With the three-part feed roller convex and concave snowboards can be optimally processed.



The intuitive touch panel quickly switches between pre-grinding, basic and finish grinding. Pre-defined sequence programs ensure consistently good grinding results independently of the operator.

# PROFI B

## Belt tuning machine with freedom of choice



The PROFI B line is the new generation of our proven, configurable basic machine for ski service workshops as well as alpine ski and snowboard producers. With its modern, space-saving design and the standard mobile equipment, it is part of the flexible basic equipment of every workshop and meets all the requirements for base grinding. The self-centering belt allows easy handling.

Its optionally selectable feed or side edge attachment turns it into a central processing station for all basic work steps required to machine skis and snowboards.



# Different options



## Technical Data

	PROFI B	PROFI B K with side edge	PROFI B V with feed	PROFI B VK with feed and side edge
Item Number	1068098	1068099	1077397	1077398
Dimensions (L x W x H) in mm / ft	1280 x 790 x 1405 / 4'2" x 2'7" x 4'7"	1280 x 960 x 1230 / 4'2" x 3'2" x 4'	1280 x 910 x 1405 / 4'2" x 3' x 4'7"	1280 x 960 x 1405 / 4'2" x 3'2" x 4'7"
Weight approx. in kg / lb	350 / 772	390 / 860	420 / 926	475 / 1047
Connecting voltage (EU-data)	400 V, 3PH/N/PE, 50 Hz	400 V, 3PH/N/PE, 50 Hz	400 V, 3PH/N/PE, 50 Hz	400 V, 3PH/N/PE, 50 Hz
Connecting voltage (US-data)	230 V, 3PH/N/PE, 60 Hz	230 V, 3PH/N/PE, 60 Hz	230 V, 3PH/N/PE, 60 Hz	230 V, 3PH/N/PE, 60 Hz
Connecting plug (distribution only in the EU)	CEE 16A 5-pin.	CEE 16A 5-pin.	CEE 16A 5-pin.	CEE 16A 5-pin.
Engine speed (belt unit) rpm	EU - 470 / 955 (2-stepped) US - 560 / 1145 (2-step.)	EU - 470 / 955 (2-stepped) US - 560 / 1145 (2-step.)	EU - 470 / 955 (2-stepped) US - 560 / 1145 (2-step.)	EU - 470 / 955 (2-stepped) US - 560 / 1145 (2-step.)
Engine speed (side edge unit) rpm	-	EU - 1380 / US - 1630	-	EU - 1380 / US - 1630
Connecting power in kW	3.0	3.5	3.3	3.8
Coolant tank approx. in l / gal	100 / 26.4	100 / 26.4	100 / 26.4	100 / 26.4
Grinding belt in mm / ft	350 x 1500 / 1'2" x 4'1"	350 x 1500 / 1'2" x 4'1"	350 x 1500 / 1'2" x 4'1"	350 x 1500 / 1'2" x 4'1"
Side edge grinding belt in mm / ft	-	20 x 1200 / 0.8" x 3'11"	-	20 x 1200 / 0.8" x 3'11"
Grinding pressure feed in kg / lb	-	-	0-60 / 0-132	0-60 / 0-132

Compressor required. Look at p. 64-65.

# CUB

## Ultra compact base and side edge grinding machine



The CUB is currently the most compact belt grinding machine on the market for efficient base and side edge grinding. Due to the small space-amount, the machine is the ideal solution for small service workshops and offers a very good price-performance ratio.

The vertical 350 mm / 1'2" wide grinding belt and the side edge grinding attachment for skis and snowboards are arranged extremely compact. Overall, the CUB requires only 0.52 m<sup>2</sup> / 5.6 ft<sup>2</sup> of floor space and therefore fits in every workshop. For flexible use, the CUB is equipped with rotating wheels. The coolant tank is easily accessible and therefore very comfortable to maintain. On the control panel, the belt speed can be easily adapted.

# Easy to integrate into every workshop

The single-phase 230V power supply allows the CUB to be connected to any standard power outlet, minimizing its power consumption.

## Technical Data

Item Number	1049639
Dimensions (L x W x H) in mm / ft	72 x 72 x 108 / 2.8" x 2.8" x 4.3"
Weight in kg / lb	250 / 551
Connecting voltage (EU - data)	220 V, 1PH, 50 Hz with electronic speed controller (available in 380 V)
Connecting plug	Schuko plug
Enging speed rpm (EU - data)	750 / 1500
Connecting power in kW	3.5
Coolant tank approx. in l / gal	45 / 11.9
Grinding belt in mm / ft	350 x 1500 / 1'2" x 4'11"
Side edge grinding belt in mm / ft	20 x 1000 / 0.8" x 3'3"



Adjustable side edge angles from 87 to 90 ° to suit individual needs.



Easily accessible water tank for comfortable cleaning and maintenance.



# DTS-U II RACE

## Uncompromising edge tuning

The further developed edition of our DTS-U Pro raises the edge tuning to a new level. With the new edge tuning machine from Reichmann you don't need to compromise. High throughput, easy handling and best quality are guaranteed.

### EFFICIENT HQT EDGE TECHNOLOGY

The new transport system enhances your ease of use by ski or board transport without binding bridge. Since the loading can take place simultaneously with base edge processing, downtimes are eliminated. For you, this means even higher throughput and gentle processing.

In the DTS-U II Race, both side and base edges are processed simultaneously with proven HQT technology in just one operation. This gives you burr-free, ready-to-ride skis and boards right out of the machine.



#### STEFAN BAUMEISTER

Bronze medal, Snowboard World Cup Park City 2019

Race-Boarder, Snowboard Germany



### Precise angle adjustment

With the practical and easily accessible angle adjustment for side and base edge, a particularly wide range of winter sports enthusiasts can be operated with regard to driving skills and ski type.



### Grinding without binding bridge

In the DTS-U II Race, skis and boards are ground without bridge. Depending on the type of the binding, snowboards can also be processed with binding. This makes your work easier and faster.



### New Reichmann Edge Sanding Plate

The new Reichmann Edge Sanding Plate is perfect for side edge grinding. The specially developed grinding disc simultaneously carries off the side cheek during side edge grinding and removes rust.



### Quick change of the discs

Within seconds, your disc can be replaced without tools using the SwitchFIX quick-change system. This allows you to efficiently adapt your DTS-U II Race to your requirements.



### Efficient base edge tuning

The base edge tuning guarantees perfectly polished, burr-free base edges for maximum safety and driving pleasure. Since even tip and tail are processed, time-consuming manual rework is eliminated.



### Universal usage for all skis & boards

The pressure roller ensures safe transport of all types of skis and boards through the machine, e.g. Rocker skis and children skis. This makes the DTS-U II Race universally applicable.









## FURTHER PRODUCT FEATURES

retractable roller conveyor

space-saving storage during summer

efficient transport system

guarantees time savings  
due to increased throughput



variable speed of the side and base edge

flexible adaptation of the removal

HQT edge tuning

perfect, burr-free edges with mirror finish

## Technical Data

Item Number	1068445
Dimensions (L x W x H) in mm / ft - folded out	3960 x 930 x 1380 / 13' x 3'1" x 4'6"
folded in	1700 x 930 x 2200 / 5'7" x 3'1" x 7'3"
Weight in kg / lb	820 / 1808
Connecting voltage (EU data)	400 V, 3 PH/N/PE, 50 Hz
Connecting voltage (US data)	230 V, 2 PH/PE, 60 Hz
Connecting power in kW	3.6
Connecting plug	CEE 16A 5-pin.
Engine speed (side edge) rpm	stepless
Engine speed (base edge) rpm	stepless
Polishing discs in mm / ft	Ø 250 x 55 / 9.8" x 2.2"
Side edge discs in mm / ft	Ø 154 x 25 / 6.1" x 1.0"
Feed speed	variable

Compressor required. Look at p. 64-65.

# DTS II RACE

## The efficient side edge grinding machine



The DTS II RACE is ideal as a universal side edge grinding and side edge finishing machine for workshops that value short processing times.

With the newly developed "Edge Sanding Plate", you can simultaneously reset the side cheek during side edge grinding. The Edge Sanding Plate achieves a significantly higher removal rate and therefore removes rust on the edges very easy. In addition, skis with different initial angles can be efficiently brought to the same target angle in one grinding operation. This saves time-consuming manual preparation and makes the first steps in the ski service a lot easier. Thus, the machine is essential for all workshops, which have to cope with a high service amount of customer skis.

### HIGH QUALITY SIDE EDGE FINISH

The side edge finish is ideal for workshops that currently only use base edge tuning. Save time and effort and take your edge finish to a new level!



## High throughput

The simultaneous machining of both side edges and the new feed system enable a throughput of up to 60 pairs of skis or boards per hour. So you benefit from huge time savings.



## Precise angle adjustment

With the practical and easily accessible angle adjustment for the side edge, a particularly wide range of winter sports enthusiasts can be operated with regard to driving skills and ski type.



## Grinding without binding bridge

In the DTS II Race, skis and boards are ground without bridge. Depending on the type of binding snowboards can also be processed with binding. This makes your work easier and faster.



## New Reichmann Edge Sanding Plate

The new Reichmann Edge Sanding Plate is perfect for side edge grinding. The specially developed grinding plate simultaneously takes off the side wall during side edge grinding and removes rust.



## Quick change of the discs

Within seconds, your disc can be replaced without tools using the SwitchFIX quick-change system. This allows you to efficiently adapt your DTS II Race to your requirements.

## Technical Data

Item Number	1071156
Dimensions (L x W x H) folded in (in mm / ft) folded out (in mm / ft)	3420 x 930 x 1380 / 11'3" x 3'1" x 4'6" 1160 x 930 x 2200 / 3'10" x 3'1" x 7'3"
Weight in kg / lb	490 / 1080
Connecting voltage (EU - data)	400 V, 3 PH/N/PE, 50 Hz
Connecting voltage (US - data)	230 V, 2 PH/PE, 60 Hz
Connecting power in kW	2.4
Connecting plug	CEE 16A 5-pin.
Engine speed (side edge)	stepless
Polishing discs in mm / ft	Ø 250 x 55 / 9.8" x 2.2"
Side edge discs in mm / ft	Ø 154 x 25 / 6.1" x 1"
Feed speed	variable

Compressor required. Look at p. 64-65.



**SELINA JÖRG**

Gold medal, Snowboard World Cup Park City 2019  
Race-Boarder, Snowboard Germany

## KFM-U

### High quality edge tuning

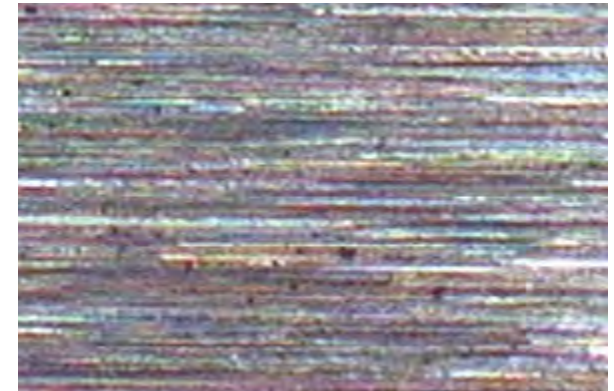
The steel edge finish machine KFM-U ensures perfect base edges and optimum rotation of Alpine skis for the highest customer satisfaction. The KFM-U is the basis for the edge tuning and is therefore a must for each ski service workshop. This versatile and efficient machine produces outstanding edge results within the smallest place. To be more flexible it is available with a side edge polish or grinding unit and is always delivered as mobile version.

# Perfect edge sharpness for base edges

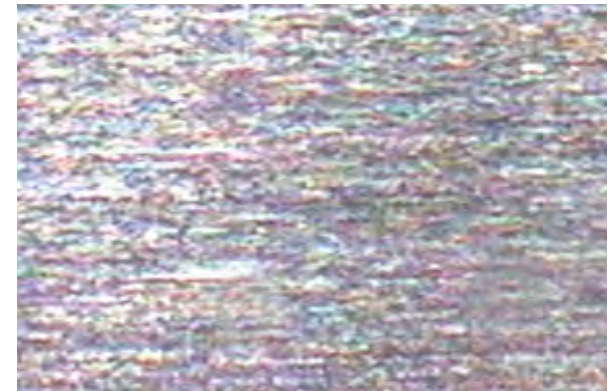
The KFM-U base finishing machine gives base edges a mirrored finish for easy turning and better edge grip. The circumferential wheel tunes the base edges without rounding off the edges or generating burrs, thus both base edges can be polished and beveled in one step. Thanks to the automatic feed wheel, as well as the mechanical lifting device, the KFM-U achieves consistent results.

## Technical Data

Item Number	1011051
Dimensions (L x W x H) in mm / ft	850 x 670 x 1320 / 2'9" x 2'2" x 4'4"
Weight in kg / lb	280 / 617
Connecting voltage (EU-data)	400 V, 3 PH/N/PE, 50 Hz
Connecting voltage (US-data)	230 V, 3 PH/N/PE, 60 Hz
Connecting plug	CEE 16A 5-pin.
Engine speed rpm	910 (EU) / 1110 (US)
Connecting power in kW	2.01
Coolant tank approx. in l / gal	30 / 7
Tuning disc base edge in mm / ft	Ø 300 x 170 / Ø 11.8" x 6.7"



That's how an edge looks like without polish – you can see fine drag lines.



That's how an edge looks like after polishing – you can see a surface without any weak points for external influences – the so called „mirror finish“.



## KSM

### Precise side edge tuning

The steel edge sharpening machine KSM is the entry into the edge grinding and delivers you a precise side edge processing within the smallest place. It delivers angle adjustment from 86 to 90° of side edge angle and has an optional double support roller for snowboards available. You can also get this machine with a base edge grinding device and a solid machine stand as well.

**CHRISTIAN HUPFAUER**

Race-Boarder, Snowboard Germany



# The standard for your workshop



Optional double support roller for skis and boards.

## Technical Data

Item Number	1000523
Tuning device base edges	1038825
Double support roller for SNB & wide skis	750100
Machine stand with intermediate compartment	750047
Dimensions (L x W x H) in mm / ft	820 x 450 x 450 / 2'8" x 1'6" x 1'6"
Weight in kg / lb	50 / 110
Connecting voltage (EU - data)	400 V, 3 PH/N/PE, 50 Hz
Connecting voltage (US - data)	230 V, 3 PH/N/PE, 60 Hz
Connecting plug (distribution only in the EU)	CEE 16A 5-pin.
Enging speed rpm	1375 (EU) / 1630 (US)
Connecting power in kW	0.43
Coolant tank approx. in l / gal	22 / 5
Side edge grinding belt in mm / ft	20 x 1200 / 0.79" x 3'11"



Optional tuning device to grind the base edge.



# GLIDE MASTER

## Environmentally-friendly gliding

The Reichmann GLIDE MASTER has been specially developed for the efficient application of the new direct gliding fluid GigaGlide. GigaGlide is a 100% biodegradable ski wax alternative for all types of skis and snowboards. With the GLIDE MASTER, the environmentally friendly direct gliding fluid can be easily applied to the ski or board surface within seconds. It is extremely convenient to use because, unlike waxing, no heating or brushing is necessary. With just one application, your customers can enjoy up to seven days of fun on the slopes and benefit from optimal gliding properties even in extreme snow conditions.

Save time and money thanks to the long durability and quick application and at the same time protect the environment!

**SIEGFRIED RUMPFHUBER**

former FIS ski racer, founder & CEO of ORIGINAL+



## Quick & economical application

Using two rollers arranged one behind the other, the direct gliding fluid is evenly applied on the ski base and excess liquid is wiped off at the same time. This way, just the right amount remains on the ski base.



## Simple operation

The excess direct gliding fluid can simply be drained off at the end of the day on the integrated tap. The GIDE MASTER is also available as a flexible table model that takes up very little space.



## Comfortable handling

The GLIDE MASTER does not require electricity or any other accessories. Since there is no dust, heat or vapors, working is safe, clean and environmentally friendly.

# GigaGlide - Sustainable and long-lasting fun on the slopes

The direct gliding fluid from GigaGlide dispenses 100 percent with environmentally harmful ingredients. The special formula not only works on the surface, but penetrates further. It causes a slight non-stick effect at the molecular level and thus guarantees perfect gliding properties for up to 7 days on the slopes. Even on ice and wet snow.



## Technical Data

Item Number	1077195
Table version	1077196
Machine stand	
Dimensions (L x W x H) in mm / ft	
Table version	185 x 275 x 110 / 7.3" x 10.8" x 4.3"
Stand version	400 x 300 x 865 / 1'4" x 11.8" x 2'10"
Weight in kg / lb	
Table version	3.2 kg / 7 lb
Stand version	20 kg / 44.1 lb
Volume fluid container in l / gal	1.5 / 0.4
max. ski width in mm / in	160 / 6.3"



# RACE WAXER

Long-lasting high-end waxing result



The RACE WAXER was specially developed for the innovative Optiwax Glide Tapes to make waxing even faster and more user-friendly. With the particularly long-lasting and resistant wax, your customers benefit from significantly longer service intervals and optimal gliding properties on the slopes.

This way you will get a particularly long-lasting waxing result at World Cup level in a very short time!



### Comfortable operation

The Optiwax Glide Tape can be inserted into the RACE WAXER in a very short time and simply replaced after usage.



### Economical wax application

With the RACE WAXER you benefit from a significantly reduced wax consumption compared to manual application of the glide tape with the iron.



### Integrated structure brush

The integrated structure brush enables the skis to be brushed off immediately after the wax has been applied.

## Durability for up to 200 kilometers on the slopes

According to the manufacturer, Optiwax offers a service life that is 3-7 times longer than conventional waxes. The reason for this is the extreme hardness of the wax. With the help of the specially developed "Glide Tapes" it is possible to apply the extremely hard wax to the ski base. The thin layer of wax on the paper carrier transfers easily to the ski when it is heated and is particularly resistant. Due to the exceptionally long durability of up to 200 kilometers on the slopes and the excellent gliding properties, the wax is very attractive for both racers and sports enthusiasts.

## Technical data

Item number	1077842
Machine stand closed	1040352
Machine stand open	1053797
mobile version	1043956
Dimensions (L x W x H) in mm / ft	550 x 510 x 990 / 1'10" x 1'8" x 3'3"
Weight in kg / lb	70 / 154.3
Connecting voltage (EU-data)	230 V, 1 PH/N/PE, 50 Hz
Connecting power in kW	2
Connecting plug	Schuko plug
Enging speed waxing roll in rpm	3.1 (EU)
Engine speed brush in rpm	600 (EU)
Operating temperature in C° / F	80-100 / 176-212
Heating power in W	1200



**CAROLIN LANGENHORST**  
Race-Boarder, Snowboard Germany

## BWM 350 C Digital

The precisely adjustable waxing machine

A customizable waxing machine – how does it work?

Easy – with our individually adjustable heating aggregate! With the new BWM 350 C Digital from Reichmann you now have the possibility to adjust the temperature individually to your needs between 80 and 100° C (176 and 212 °F) according to your wax and thereby keeping the machine constantly at the selected degree - no matter what temperature your shop has.

This regulation enables energy efficient waxing because the heating aggregate only switches on if it's really needed. You can see the increase of the temperature directly on the digital display.



# Efficient waxing

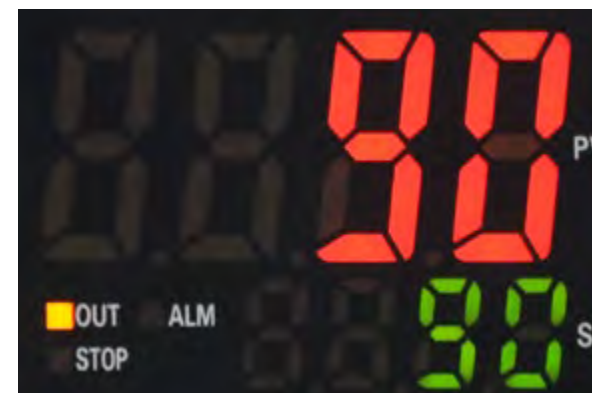
Due to the 230 V capacity you are able to minimize energy consumption. The specially developed waxing brush guarantees an optimized base finish and polishes a thin layer of wax into the base exposing base structure and edges. By default, the BWM 350 C Digital comes as a stable table model, but is also available with a mobile stand for flexible use, if desired. The cleaning is also very uncomplicated with this machine. By removing the cover on the front, the inside of the machine can be reached easily and thus cleaned comfortably.



The optional stand of the BWM 350 C Digital is light and offers a lot of space for your waxes – so you have everything required on hand.

## Technical Data

Item Number	1050144
Machine stand closed	1040352
Machine stand open	1053797
Mobile version	1043956
Dimensions (L x W x H) in mm / ft	550 x 510 x 885 / 1'10" x 1'8" x 2'11"
Weight in kg / lb	66 / 146
Connecting voltage (EU - data)	230 V, 1PH/N/PE, 50 Hz
Connecting voltage (US - data)	230 V, 1PH/N/PE, 60 Hz
Connecting plug	Schuko plug
Engine speed rpm	560 (EU) / 672 (US)
Connecting power in kW	3.25
Operating temperature in °C / °F	80 - 100 / 176 - 212
Heating power in W	2500



Choose your temperature and see how the temperature rises directly on the display.

# WAXFUTURE

## WALL SPEED - the original!



**CHRISTIAN HUPFAUER**

Race-Boarder, Snowboard Germany

Waxing on world cup level is done easily with the infrared waxing machine from Wax Future. The infrared heating lamp ensures a gentle but nevertheless intense treatment - the base is able to absorb more wax, therefore the wax can penetrate further and lasts longer.

With the help of the WAX FUTURE WALL SPEED waxing of your ski and snowboards can be done perfectly with minimum effort and space. It can be directly mounted on the wall and thus saves you valuable floor area.

By using the WAX FUTURE WALL SPEED, you can choose between a variety of different programs and speed levels - so it fits every demand. Moreover, the two infrared lamps can be switched on and off according to your specific needs by simply pushing a button. Therefore, the WAX FUTURE WALL SPEED reaches an output of up to 40 pairs of skis per hour.

## Technical Data

Item Number WALL SPEED	1058005
Machine stand	1062031
Dimensions (L x W x H) in mm / ft	2500 x 320 x 750 / 8'2" x 1'1" x 2'6"
Power	14 A
Connecting voltage (EU-data)	230 V, 1PH/N/PE, 50 Hz
Connecting voltage (US-data)	230 V, 1PH/N/PE, 60 Hz
max. throughput	40 pairs
max. ski length	2200 mm / 7'3"



The two infrared lamps can be switched on and off separately - according to your specific needs.



The wax penetrates further in the ski base and thus enables a finish at world cup level.

## WAXPROFI 125

The Waxprofi 125 is ideally suited as preparation for the WAX FUTURE WALL SPEED to apply a fine wax film on the ski surface. By using different wax baths diverse waxes can be changed easily.

Roller width 125 mm / 5". Connecting voltage: 230 V, 50/60 Hz.



Waxing within seconds with economical dosage



Easily adjustable wax temperature on the control panel

	Item-No.
<b>Waxprofi 125 Complete</b>	1075295
Wax tub, separate	1075296
Spare roller (silicon)	1046922
Spare roller (aluminum)	1075297



## POLYMAT 1 / POLYMAT 2

### Ski and Snowboard base repair machine

The POLYMAT automatically fills in damages in the base of skis or snowboards - and is the optimum basis for excellent ski service. Only the damaged places will be filled in with the base material. The POLYMAT 1 has been developed for the repairing of one ski, whereas the POLYMAT 2 has been developed for the repairing of one pair of skis or one snowboard. There's no time intensive removal and reworking required before base grinding. Thus, the POLYMAT guarantees efficient and material saving work.



# Efficient working

POLYMAT 1 & 2 impress with their speed and minimal warm-up time. The automatic temperature control and optimized repair speed ensure odorless working and a permanent connection of base and repair material. The repaired ski base with the POLYMAT 1+2 is not inferior to that of brand new skis, whereby the skis stay visually and technically high-quality. With the automatic base repair you will gain optimized results and excellent quality. Moreover you will shorten your service processes and save time and payroll. A door at the front enables you to clean the machine easily.

## Technical Data

Item Number		
Table design	1009621	-
Stand design	1009622	1020342
Workbench design	1028165	-
Dimensions (L x W x H) in mm / ft		
Stand design	2530 x 500 x 1400 / 8'4" x 1'8" x 4'7"	2530 x 500 x 1400 / 8'4" x 1'8" x 4'7"
Table design	2530 x 380 x 800 / 8'4" x 1'3" x 2'7"	2530 x 380 x 800 / 8'4" x 1'3" x 2'7"
Weight in kg / lb		
Stand design	85 / 187	100 / 220
Table design	70 / 154	85 / 187
Connecting voltage (EU-data)	230 V, 1 PH/N/PE, 50 Hz	230 V, PH/N/PE, 50 Hz
Connecting voltage (US-data)	230 V, 1 PH/N/PE, 60 Hz	230 V, 1 PH/N/PE, 60 Hz
Connecting plug (EU)	Schuko plug 16A	Schuko plug 16A
Connecting power in kW	0.7	1.35
Operating temperature in °C / °F	280 / 536	280 / 536
Heating capacity in W	600	1200



The POLYMAT 2 repairs two skis in one progress – so you can save time.



The POLYMAT could also be placed on the working bench.

**STEFAN BAUMEISTER**

Bronze medal, Snowboard World Cup Park City 2019

Race-Boarder, Snowboard Germany

# Multifunctional workbench

Perfectly organized within your daily service routine

With the Reichmann multifunctional workbench you will get a well-organized working station, which is a must-have for each service workshop. The workbench is designed for one or two workplaces and will be delivered as complete system including ski and board clamping devices, 24 classical load devices, drawers, holding devices, lighting and power outlets and can be extended with a POLYMAT 1 or 2. The optional overhead feature is also separately available.



# Components

- Universal vise for binding adjustment for 2 skis or 2 snowboards
- 2 adjustable supports for skis and snowboards
- Overhead and 110 V AC outlet(s)
- 2 load devices with each 12 boxes for screws, hole plus, etc.
- Tool brackets to hold and organize tools
- Clamping device for binding fitting (not possible with connection to POLYMAT 1 + 2)
- Drawer

## Technical Data

Item Number	750207
Dimensions (L x W x H) in mm / ft	2200 x 900 x 1900 / 7'3" x 2'11" x 6'3"
Working height approx. in mm / ft	800 / 2'7"
Space requirement approx. in qm / ft²	2 / 21.5
Weight in kg / lb	120 / 265



A lot of space inside of the drawer.



Even more space due to the 24 compartments.



# Ski and Snowboard boot cleaner

Rapid cleaning for your rental shop

The Reichmann ski and snowboard boot cleaner is perfectly suitable for ski rental shops and the hotel industry in ski areas. You'll be able to offer your customers prepared and clean equipment. Even the strongest contaminations like on the sole or the side of the boots can easily be removed just with a soft pressure within seconds and the used water can be released. So you can save a lot of time and money due to the pair-wise cleaning. The value and functionality of your equipment will be improved and rental and customer boots will last a long time.

**CAROLIN LANGENHORST**

Race-Boarder, Snowboard Germany

With the purchase of this machine you will generate many customer benefits and increase the trust of the customers in the hygiene of your equipment.

We recommend the usage of our Protect 50 for the usage of this machine. Protect 50 protects the boots and the machine of corrosion. We recommend a concentration of min. 2% (refractometer scale 1.5). One liter (0.3 gal) of the product fits to a new filling of the water tank.

	Item-No.
Corrosion protection for ski boot cleaner (Container: 1000 ml / 0.3 gal)	1049517

## Technical Data

Item Number	1034629
Optional mobile machine stand	1034630
Dimensions (L x W x H) in mm / ft	900 x 700 x 1000 / 2'11" x 2'4" x 3'3"
Weight in kg / lb	152 / 335
Connecting voltage (EU-data)	400 V, 3 PH/N/PE, 50 Hz
Connecting voltage (US-data)	230 V, 3 PH/N/PE, 60 Hz
Connecting plug (EU)	CEE 16A 5-pin.
Connecting power in kW	0.5
Coolant tank in l / gal	70 / 18



Gentle cleaning of the sole and side areas.



The practical stand offers valuable storage space and is easy to move thanks to its wheels.





### COMPRESSOR LFX 2.0 / LFX 2.0 - 100

- For non-stop operation with single machinery
- Nearly maintenance-free operation; guaranteed up to 100 % oil free
- Standard tight construction and quiet operation (62 till 64 dBA)
- One-cylindrical, moveable piston compressor

### Technical Data

Item Number	1014810
Dimensions (L x W x H) in mm / ft	520 x 440 x 818 / 1'8" x 1'5" x 2'8"
Tank in l / gal	20 / 5
Performance in l/min / gpm	150 / 39.6



### COMPRESSOR FINI - The alternative for LFX

- For non-stop operation with single machinery
- Nearly maintenance-free operation
- Standard tight construction and quiet operation
- One-cylindrical, moveable piston compressor

### Technical Data

Item Number	1048806
Dimensions (L x W x H) in mm / ft	1150 x 480 x 885 / 3'9" x 1'7" x 2'11"
Tank in l / gal	50 / 13
Performance in l/min / gpm	310 / 81.9



### COMPRESSOR RSKD-COMPACT incl. dryer

- For non-stop operation of SF-2 Pro, SF-3 and SF-4
- Nearly maintenance-free operation; guaranteed up to 100 % oil free
- Standard tight construction and quiet operation (62 till 64 dBA)

## Technical Data

Item Number	1038585
Dimensions (L x W x H) in mm / ft	1002 x 458 x 926 / 3'3" x 1'6" x 3'
Tank in l / gal	90 l / 23 gal 4.0 - 7.5 bar / 58 - 108.8 PSI with dryer
Performance in l/min / gpm	400 - 600 l/min / 106 - 159 gpm; nominal power 4.0 kW; 400 V - 16 CEE plug



### REFRIGERANT TYPE DRYER

This dryer is perfectly suited for fulfilling the requirements of industrial air conditions. Due to the drying system the moisture of the compressed air is segregated as condensation is automatically bled off. This will increase the life span of the pneumatic cylinder and valves. It will improve work conditions, thus improving your work.

## Technical Data

Item Number	1055504
Type	CQ 0020 AB
Dimensions (L x W x H) in mm / ft	410 x 360 x 645 / 1'4" x 1'2" x 2'1"
Volume rate m³/h / gpm	20 / 88
Volume rate m³/min / gps	0.33 / 88
Pressure decrease in bar	0.15
Electrical connection V/Ph/Hz	230/1/50-60
Power consumption in kW	0.16
Volume of cooling air m³/h / gpm	200 / 881
Compressed air supply BSP	3/8"
Weight in kg / lb	24 / 53
Refrigerant	R134a







# COOLING

## For perfect race results

This cooling coil is easy to integrate into the water tank. The water will be cooled down to a temperature of 7 – 10° C / 45 - 50° F (depending on the performance and room temperature).

### EFFECTS:

- Constant and precise structures due to the minimal generation of heat
- Higher performance by higher application parameters
- Better skin tolerance of the grinding emulsion used
- Longer service life of the grinding emulsion

	Item-No.	Machine
Coolant system with 3 m / 9'10" Flex hose; 4 kW	1048894	SF-1, SF-3, SF-4
Coolant system with 3 m / 9'10" Flex hose; 2 kW	1055633	PROFI 4, PROFI S200, PROFI S350







# SERVICE CONTRACT

More security for the next season

To get through the season without worry, and to avoid unnecessary future maintenance and costly downtime, summer machine maintenance is indispensable. That's why we recommend that you schedule a machine inspection right after the winter season. Our technician will check your machines and make sure that they are in optimum condition for the next season.

Our service inspection includes among other things:

- Check and measure discs, stones and diamonds, belt control
- Oil and lube all mechanical and pneumatic elements
- Check, replace or refill oil levels (motors are maintenance-free)
- Check/ replace general control and function of all necessary components or wearing parts

Inspection fee rates depend on the quantity and type of machines and the recommended service(s) in accordance with our maintenance schedules. Parts demonstrating excessive wear will be replaced and charged separately. Travel and accommodation expenses for our service technicians are included in our service contract.

For further information please phone or email us at +49 7309 875 80 or [service@reichmann.com](mailto:service@reichmann.com)





# ACCESSORIES

Highest Quality – down to the last detail

The machine and its construction is only one part of success – maintenance is the other. For optimal care of your machine it is very important to use the right accessories. It is best to use original accessories to ensure that the quality satisfies your requirements.

The accessories are perfectly matched to your machines. Accessories for the handy treatment of skis, boards or bindings have been improved to meet the standards of your service workshop.

In this catalogue you will find only high quality selected products that will provide you daily support. Often it is the small changes that make a huge difference.





### DOUBLE CLAMP PRO-UNIVERSAL

For two skis or one board. Ski supports adjustable in length and height. Suitable for skis with high sidewalls. Together with the Universal Ski Clamp S3-Multi every shape of ski will be tightened and secured without any problem.

	Item-No.
double clamp	750307



### UNIVERSAL SKI CLAMP S3-MULTI

For two skis or one board. Every shape of ski will be secured without any issue. Includes the adapter enlargements for boards.

	Item-No.
universal ski clamp	750344



### SKI MOUNTS

A set of rails and supports for mounting on the workbench; Length and height adjustable.

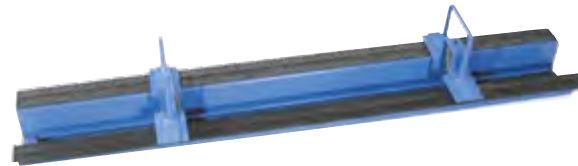
	Item-No.
ski mounts	750308



### SUPER PRO PLUS

First class World Cup ski vice made of aluminum for all types of alpine skis. Height-adjustable outer supports and infinitely adjustable from 90° to 60°. Ideally suited for edge and base preparation. Including 2 ski stopper holders.

	Item-No.
Super Pro Plus	1075228



### CLAMP FOR BINDING ADJUSTMENT

Clamps for fast and easy binding installation of alpine and nordic skis.

	Item-No.
clamp for binding adjustment	750060



### INSERT BIT FOR FEIN POWER DRILL

		Item-No.
1	100 mm / 4"; Size 2	1031965
2	100 mm / 4"; Size 3	1031966
3	120 mm / 4.7"; Size 2	1031967
4	100 mm / 4"; Torx Size 20	1056105

✦ Cross recess ✦ Torx



## SNOWBOARD COUNTERSINK

Countersink for snowboard, 110°. For lowering countersunk nuts.

	Item-No.
snowboard countersink	1002516



## HOLLOW DRILL WITH STOP

For inserting plastic dowels / brass dowels. With self-centering - no drilling jig required when drilling for dowels; when drilling out broken binding screws, use a jig.

	Item-No.
hollow drill, Ø 8 mm / 0.31"	1075206



## BINDING DRILLS CHILDREN SKIS & CROSS-COUNTRY SKIING

Dimensions	Item-No.
1 3.5 x 7 mm / 0.14" x 0.28"; Children	1001358
2 3.5 x 9 mm / 0.14" x 0.35"; Children	1001361
3 3.5 x 15 mm / 0.14" x 0.59"; Cross-Country	1001362
4 3.8 x 15 mm / 0.15" x 0.59"; Cross-Country	1001363



## MULTI-STEP DRILL

with Boronzo cut. For Carver.

	Item-No.
3.3/4.1 x 11 mm / 0.13"/0.16" x 0.43"; for Carver	1075205



## BINDING DRILLS ALPINE SKI & SNOWBOARD

Special binding drill with micro-grinding. The drill bit to be used can be found at a mark on the ski.

Dimensions	Item-No.
1 3.6 x 6.5 mm / 0.14" x 0.26"; Alpine	1076745
2 3.6 x 7 mm / 0.14" x 0.28"; Alpine	1001412
3 3.6 x 7.5 mm / 0.14" x 0.3"; Alpine	1076746
4 3.6 x 9 mm / 0.14" x 0.35"; Alpine	1001413
5 3.8 x 9 mm / 0.15" x 0.35"; Alpine	1001414
6 3.8 x 11 mm / 0.15" x 0.43"; Alpine	1001415
7 4.1 x 7.5 mm / 0.16" x 0.3"; Alpine	1076747
8 4.1 x 9 mm / 0.16" x 0.35"; Alpine	1001365
9 4.1 x 9.5 mm / 0.16" x 0.37"; Alpine	1076748
10 4.0 x 7 mm / 0.16" x 0.28"; Alpine/Snowboard	1001368
11 4.0 x 9 mm / 0.16" x 0.35"; Alpine/Snowboard	1001416
12 4.1 x 7 mm / 0.16" x 0.28"; Alpine/Snowboard	1001364
13 4.1 x 11 mm / 0.16" x 0.43"; Alpine/Snowboard	1001366
14 4.2 x 11 mm / 0.17" x 0.43"; Alpine/Snowboard	1001417

## HARDENED VERSION

with TiN coating for a longer service life.

Dimensions	Item-No.
4.1 x 9 mm / 0.16" x 0.35"; Alpine	1075203

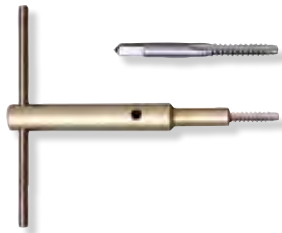




### PLASTIC BINDING PLUGS - color-mixed

For closing old drill holes. Ø 4.6 mm / 0.18".

	Item-No.
Color-mixed, 1000 Stk.	750367
Assortment box, 7.500 Stk.	1075227



### TAP M6 SCREWS

To be able to screw in binding screws neatly - for more safety and comfort.

	Item-No.
for manual operation with tap wrench	1075194
precision cutter, separate	1075193



### PLASTIC BINDING PLUGS - single-color

Pack of 1000 pcs. in bag.

	Item-No.
black	1005363
red	1005364
white	1005365
blue	1005366
yellow	1005367
silver	1015368
green	1060336



### SNOWBOARD MULTI-INSERTS

For broken snowboard bindings. Prepare with countersink, fit the insert and glue in with 2-component glue. **Pack of 50 pcs.**

	Item-No.
transparent, length 7 mm / 0.28"	1075214
black, length 7 mm / 0.28"	1075215
transparent, length 9 mm / 0.35"	1075216
black, length 9 mm / 0.35"	1075217



### SCREW-IN TOOL FOR BRASS INSERTS

Screw-in tool for screwing brass inserts in; including counter-holding key.

	Item-No.
screw-in tool	750364



### BRASS INSERTS

For repairing torn out binding screws with external thread. The internal thread fits for normal binding screws; also holds in the foamed core. Ø 8 mm / 0.3"

**Pack of 100 pcs.**

	Item-No.
for screwing, 9 mm / 0.35" long	1075218
for screwing, 11 mm / 0.43" long	1075219



## PLASTIC DOWELS

To repair torn binding screws. Recommendation: Drill with a hollow drill and hammer in plastic dowels. Glue plug with 2-component adhesive best.  $\varnothing$  8 mm / 0.3".  
Pack of 100 pcs.

	Item-No.
plastic dowels, 9 mm / 0.35" long	1002584



## BRASS DOWELS

For repairing torn holes, for knocking in.  
Ski with fiberglass/epoxy surface: use Drill with  $\varnothing$  8 mm / 0.32";  
Ski with aluminum surface: use Drill with  $\varnothing$  8.5 mm / 0.33";  
Ski with Titanal surface: use Drill with  $\varnothing$  8.7 mm / 0.34".  
Pack of 100 pcs.

	Item-No.
brass dowels, 8.5 mm / 0.33" long	1075220



## BINDING SCREWS ALPINE SKI

Pack of 100 pcs.

	Item-No.
5.5 x 9.5 mm / 0.22" x 0.37"	1075221
5.5 x 11.5 mm / 0.22" x 0.45"	1075222
5.5 x 13 mm / 0.22" x 0.51"	1075223
5.5 x 15 mm / 0.22" x 0.59"	1075224
5.5 x 16 mm / 0.22" x 0.63"	1076710
5.5 x 18 mm / 0.22" x 0.71"	1076717
5.5 x 21.5 mm / 0.22" x 0.85"	1076718



## BINDING SCREWS CROSS-COUNTRY SKIING

Pack of 100 pcs.

	Item-No.
6.2 x 17.5 mm / 0.24" x 0.69"	1075226



## SNOWBOARD SCREWS LENS HEAD

Pack of 50 pcs.

	Item-No.
M6 x 10 mm / 0.39"	1002526
M6 x 12 mm / 0.47"	1002527
M6 x 14 mm / 0.55"	1039351
M6 x 16 mm / 0.63"	1002528
M6 x 20 mm / 0.79"	1002529
M6 x 25 mm / 0.98"	1002530



## SNOWBOARD SCREWS COUNTERSUNK HEAD

Pack of 50 pcs.

	Item-No.
M6 x 10 mm / 0.39"	1002531
M6 x 12 mm / 0.47"	1002532
M6 x 16 mm / 0.63"	1002534
M6 x 20 mm / 0.79"	1002535
M6 x 25 mm / 0.98"	1002537



### CARE SPRAY

Silicone spray for the care of moving components on machines, bindings, zippers or shoes. The spray leaves a clean lubricating film without grease or oil. **300 ml / 0.07 gal** spray can CFC-free.

	Item-No.
care spray, 300 ml / 0.07 gal	1014805



### ADJUSTMENT CARDS FOR DIATRONIC - weight method

Simple and professional reception of customer data.  
**Pack of 500 pcs.**

	Item-No.
adjustment cards DIATRONIC	1028482



### VELCRO SKI CLIPS CARVING

50 mm / 2" with window for business cards (40 x 70 mm / 1.6" x 2.8").  
**Pack of 10 pcs.**

	Item-No.
ski clips	1075260



### SPECIAL GLUE FOR BINDING FITTING

Special adhesive for gluing binding screws. Please do not use commercially available adhesive for binding assembly, this may possibly dissolve the inside of the ski / board.

	Item-No.
special glue, 100 ml / 0.03 gal	750366



### SERVICE STICKER

Easy reception of skis and safe handling due to the water proof stickers which can be used for ski or board and for additional equipment items; **Pack of 300 pcs.**

	Item-No.
sticker blue	1030179
sticker brown	1031194
sticker grey	1031193



### THERMAL PRINTER PAPER ROLL

Spare roll for binding adjustment device.  
Width 60 mm / 2.36".

	Item-No.
metal paper roll for DMG, PU 4 pcs.	750280
thermal paper roll for Jetbond, PU 1 pcs.	1076727





NO MORE BOOTS

# SKICLICKER™

## OPTIMIZE YOUR WORKFLOW IN THE SKI RENTAL

### SKICLICKER INCREASES YOUR EFFICIENCY IN THE SKI RENTAL AND MAKES BOTH YOUR EMPLOYEES AND CUSTOMERS HAPPY!

The SKICLICKER™ SOLE represents any ski boot size. So you only need a simple tool for sole length adjustment: the SKICLICKER™ SOLE!

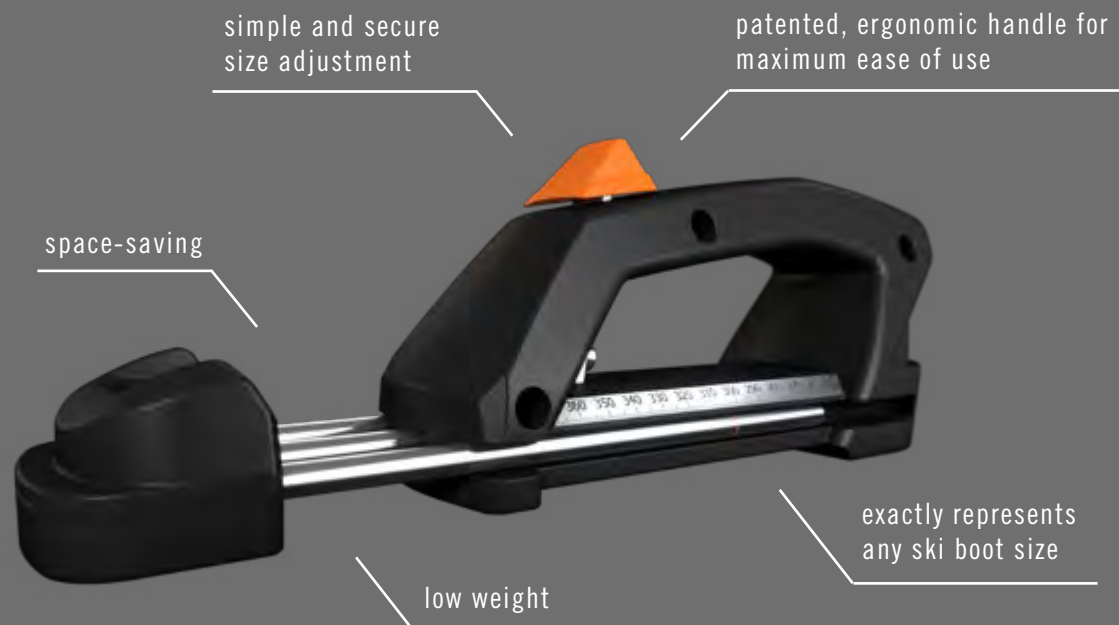
The SKICLICKER™ SOLE facilitates and accelerates the work processes of your service personnel. At the same time your customers are looking forward to reduced waiting times.



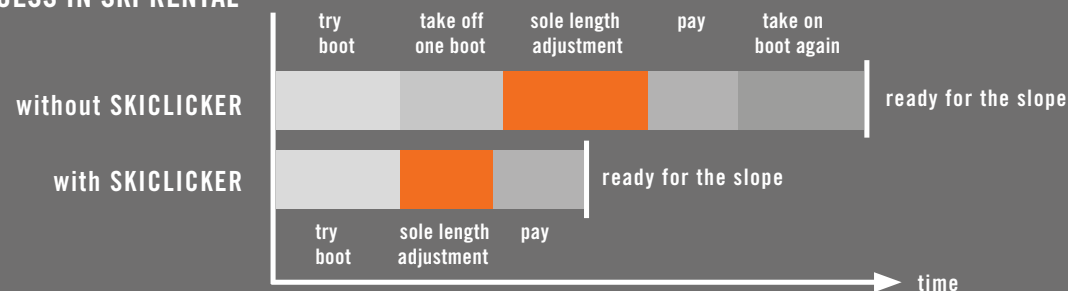
### SKICLICKER™ SOLE

Ergonomic tool for binding assembly and adjustment.  
SKICLICKER™ SOLE JUNIOR: sole lengths 200-300 mm / 7.9" - 11.8"  
SKICLICKER™ SOLE: sole lengths 251-365 mm / 9.9" - 1'2".

	Item-No.
1 SKICLICKER™ SOLE JUNIOR	1078188
2 SKICLICKER™ SOLE	1072849



### PROCESS IN SKI RENTAL





### BINDING BRIDGE ALPINE SKIS, ALUMINIUM

Made of anodized aluminium. With midpattern buffer. Low abrasion of anti-slip surface due to special coating. No pseudo boot for fixation on the binding necessary.

	Item-No.
Alpine ski, aluminium	1026649



### BINDING BRIDGE NORDIC SKIS, ALUMINIUM

Lightweight in anodized aluminium. Low abrasion of anti-slip surface due to special coating.

	Item-No.
Nordic ski, aluminium	1026244



### BINDING BRIDGE JUNIOR, ALUMINIUM

Lightweight in anodized aluminium. With midpattern buffer. Low abrasion of anti-slip surface due to special coating. No pseudo boot for fixation on the binding necessary. For skis from 1 m - 1.3 m / 3'3" - 4'3"

	Item-No.
Junior ski, aluminium	1043985



### BINDING BRIDGE CHILDREN SKIS, ALUMINIUM

Lightweight in anodized aluminium. With midpattern buffer. Low abrasion of anti-slip surface due to special coating. No pseudo boot for fixation on the binding necessary. For skis up to 1 m / 3'3"

	Item-No.
Children ski, aluminium	1047708



### BINDING BRIDGE ALPINE SKIS, CARBON

Feathery. With midpattern buffer. No pseudo boot necessary.

	Item-No.
Alpine ski, carbon	1031953



### BINDING BRIDGE NORDIC SKIS, CARBON

Feathery. With midpattern buffer; For fixation on the binding.

	Item-No.
Nordic ski, carbon	1031954



## BINDING BRIDGE SNOWBOARD, ALUMINUM

Made of anodized aluminium. Low abrasion of anti-slip surface. With practical suction cup for fixing the binding bridge on the snowboard.

	Item-No.
Snowboard, aluminium	1071637



Practical suction cup for secure fixation of the binding on the snowboard

Length adjustable to adapt to different board lengths



## RUN-UP PLATE FOR BINDING BRIDGE

Spare part for Reichmann binding bridges for easy replacement. The run-up plate allows a better transition between ski and binding bridge and thus increases the grinding quality.

	Item-No.
run-up plate	1042109



## START-UP WEDGE FOR BINDING BRIDGE

Spare part for Reichmann binding bridges for easy replacement.

	Item-No.
start-up wedge	1026537



## ANTI-SLIP PAD

Self-adhesive for binding bridge and feed pedal; blue. 50 mm x 18.3 m / 2" x 60'.

	Item-No.
anti slip pad	1072264



### BASE REPAIR PISTOL KANDIE

The KANDIE combines a fast heat-up time with easy operation. The melting head of this pistol is **60 mm / 2.36"** wide. Thanks to the built-in magnet, the device can be easily placed and fixed on the supplied metal plate. Voltage 230 V.

	Item-No.
Kandie	1021352



### POLYMASTER LIGHT

Very light repair tool for easy repair of base damages. With manual wire feed and temperature regulation. Voltage 330 V. Required material thickness: **3 mm / 0.1"**.

	Item-No.
Polymaster light	1010600



### POLYMASTER

Manual repair tool for easy repair of base damage. With automatic wire feed. Voltage: 230 V. Required material thickness: **3 mm / 0.1"**.

	Item-No.
Polymaster	1014900



### BASE REPAIR STICKS KANDIE & POLYGUN

For use in the base repair gun KANDIE and POLYGUN;  
**Bundle of 1 kg / 2.2 lb. (75 pieces)**  
**Ø 11.5 mm / 0.45"; L = 150 mm / 5.9"**.

	Item-No.
transparent	750405
black	750400



### BASE REPAIR WIRE METAL GRIP

Adhesive material to repair damage in the edge area and particularly deep coating damage. The adhesive part in the metal grip creates a permanent connection with the ski base, thus ensuring a long-lasting base repair.  
**0.5 kg / 1 lb per roll, Ø 3 mm / 0.12"**.

	Item-No.
transparent	601223
black	750439



### BASE REPAIR WIRE POLYMASTER

Base repair wire especially for POLYMASTER and POLYMASTER LIGHT.  
**0.4 kg / 0.9 lb per roll, Ø 3 mm / 0.12"**.

	Item-No.
transparent	1006805
black	1006804





## ACCESSORIES POLYMASTER

Suction and retrofit kit for POLYMASTER.  
Dimensions suction: 255 x 255 x 470 mm / 10" x 10" x 1'7"

	Item-No.
Suction Polymaster	1069449
Retrofit kit for suction	1069450



## SKI BASE PLAINER

Easy removal of repair residues. The ground and hardened blade is suitable for both skis and snowboards.

	Item-No.
ski base plainer	1015400



## BASE ADHESIVE

2-component adhesive for the repair of ski bases or various damage to the ski / board. Elastic high-performance adhesive that is very resistant to cold and heat.  
Set: 2 tubes (60g / 2.2 oz and 70g / 2.5 oz)

	Item-No.
base adhesive set	1076744



## BASE REPAIR WIRE FOR POLYMAT 1+2

Repair adhesive material especially for POLYMAT 1 + 2.  
0.4 kg / 0.9 lb per roll.  
Ø 5 mm / 0.2"

	Item-No.
transparent	1007695
black	1007694



## BASE REPAIR STICKS FOR LIGHTING

Stick made of special material for the immediate repair of damage in the polyethylene ski base. An application with an open flame is recommended. Bundle of 1 kg / 2.2 lb (75 pcs).  
Ø 8 mm / 0.3"; L = 195 mm / 7.7"

	Item-No.
transparent	1075151
black	1075152



## BASE REPAIR STRIPES

Base repair stripes, dimensions: 110 x 2000 mm / 4.3" x 6'7"

transparent, 1 pcs.	1075147
black, 1 pcs.	1075148

90 x 300 mm / 3.5" x 11.8"

transparent, 10 pcs.	750295
black, 10 pcs.	750296



### DIA EDGE EASY G 200

High quality aluminum body.

**G 200:** Coarse; for deburring and rough sharpening of the side edge of skis and snowboards.

**Replacement blade G 200:** 120 x 25 mm / 4.7" x 1".

	Item-No.
DIA EDGE EASY G 200	1031028
replacement blade G 200	1031089



### DIA EDGE EASY G 400

High quality aluminum body.

**G 400:** Medium; the standard file for sharpening the side edge of skis and snowboards after filing with the finn file.

**Replacement blade G 400:** 120 x 25 mm / 4.7" x 1".

	Item-No.
DIA EDGE EASY G 400	1031029
replacement blade G 400	1031090



### CARE OIL

Creates a very fine, smooth and sharp edge when editing the side edge with the diamond file; increases the lifespan of the material and cleans the diamond file from metal left behind.

**50 ml / 1.7 oz.**

	Item-No.
CARE OIL	1031039



### DIA EDGE EASY G 600

High quality aluminum body.

**G 600:** Fine; best grain to finish racing skis.

**Replacement blade G 600:** 120 x 25 mm / 4.7" x 1".

	Item-No.
DIA EDGE EASY G 600	1031030
replacement blade G 600	1031091



### DIA EDGE EASY G 1000

High quality aluminum body.

**G 1000:** Extra fine diamond file for finishing the side edge. Especially for speed skis in the racing sector.

**Replacement blade G 1000:** 120 x 25 mm / 4.7" x 1".

	Item-No.
DIA EDGE EASY G 1000	1031040
replacement blade G 1000	1031094



### FILE CLEANING BRUSH

Special brush made of brass for easy cleaning of soiled files. **200 mm / 7'9"**.

	Item-No.
FILE CLEANING BRUSH	1002612



## SPECIAL FINN FILE WITH CASE

High-quality, hard chromed file for finishing and smoothing ski and snowboard edges. The file of the World Cup service people. Ideal for clamping in the Edge Angle Pro.

	Item-No.
1 200 x 20 mm / 7.9" x 0.8", Cut 2	1002598
2 250 x 25 mm / 9.8" x 1", Cut 1	1002599



## RACING SUPER FILE WITH CASE

High-quality, hard chromed file for finishing the edges.

	Item-No.
150 x 15 mm / 5.9" x 0.6"	1002596



## FINN FILE HARD CHROMED WITH CASE

Coarse file with high abrasion.

	Item-No.
200 x 20 mm / 7.9" x 0.8", Cut 0	1075128



## BODYWORK FILE

For removing the applied covering material; for plane coating and rough pre-grinding of the steel edges. The file of the World Cup service people.

	Item-No.
1 100 x 30 mm / 3.9" x 1.2", radial	1075127
2 300 x 30 mm / 11.8" x 1.2", radial	1002603



## TITAN-BODYWORK FILE WITH CASE

For removing the applied covering material; for plane coating and sharpening the edges. Made of chromium-alloyed special steel.

	Item-No.
1 300 x 30 mm / 11.8" x 1.2", radial	1075133
2 350 x 35 mm / 1'2" x 1.4", radial	1002605



## TRUE BAR

Control tool for checking the base flatness and determine base edge bevels. Universal tool for the ski acceptance.

	Item-No.
true bar	750371



## NEW: TYROLIT EDGE TUNING SET

High-quality 10-part edge tuning set in premium quality. For individual and precise preparation of ski and snowboard edges - whether hobby winter sports athletes or professional racers.

### Included in the set:

- stainless steel angle
- two stainless steel files (coarse and fine)
- three ceramic files (coarse, medium and fine)
- two elastic files (coarse and fine)
- combined file to use on the go
- edge rubber for rust removal, deburring and cleaning

	Item-No.
Edge tuning set 86°	1077090
Edge tuning set 87°	1077091
Edge tuning set 88°	1077092

All components of the edge tuning set can also be purchased separately.



## STAINLESS STEEL FILE SET

Pre-processing of ski and snowboard edges. They ensure a high material removal and a precise attachment of the edge angle. The set consists of a coarse and a fine stainless steel file:

**course:** sharp, durable file for pre-processing severely damaged edges; to prepare for a new edge angle.

**fine:** 2nd-cut file for processing worn edges and preparing the fine tuning with ceramic and elastic files.

For use with the stainless steel angle.

	Item-No.
stainless steel file set	1077093



## CERAMIC FILE SET

For removing edge breakouts; for sharpening and smoothing the edge. The files give the edges a high and long-lasting surface quality. The set consists of a coarse, medium and fine ceramic file:

**course:** Elimination of edge hardening or large burrs. To protect the stainless steel files, this ceramic file can be used to work on particularly damaged edges.

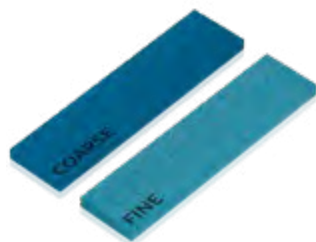
**medium:** for removing small burrs, as well as sharpening and fine tuning of the edges.

**fine:** Extra fine tuning; Smoothing and polishing of small scratches.

For use with the stainless steel angle.

	Item-No.
ceramic file set	1077094





## ELASTIC FILE SET

For polishing and fine tuning of the edges. Optimal alternative to conventional diamond files. Due to their elasticity, a uniform contact zone is achieved in all ski radii.

The set consists of a coarse and a fine elastic file:

**course:** for fine polishing of the edge surface. It gives the edge an extremely high and long-lasting sharpness.  
**fine:** to remove the finest burrs.

	Item-No.
elastic file set	1077095



## COMBINED FILE

The combined file is the ideal tool for traveling. The course side eliminates edge breakouts while the fine side smooths the edge. The combined file is applied by hand.

	Item-No.
combined file	1077096



## STAINLESS STEEL ANGLE

The high-grade stainless steel angle for the ceramic, elastic and stainless steel files allows precise filing for a clean, razor-sharp edge.

	Item-No.
Stainless steel angle, 86°	1077098
Stainless steel angle, 87°	1077099
Stainless steel angle, 88°	1077100



## EDGE RUBBER

The universal edge rubber is suitable for rust removal and deburring as well as for cleaning the edge. The edge rubber is applied by hand.

	Item-No.
edge rubber	1077097



## PRECISION ANGLE METER for the base edge

Precision angle meter for measuring the base edge angle of skis and snowboards. The electronic dial indicator and the integrated true bar with LED illumination ensure a measuring accuracy of 0.01°. Quickly and easily check the quality and precision of your ski service!

	Item-No.
precision angle meter	1073030

Application:





### ADAPTER BASE EDGE

Suitable for any kind of files; enables precise beveling of the base edge without affecting the ski base.

	Item-No.
Angle: 0.5°	1031025
Angle: 0.7°	1031026
Angle: 1.0°	1031027



### ARKANSAS NATURE SHARPENING STONE with leather case

For polishing and sharpening the side edges at icy conditions. Its very hard structure compacts the surface of the edge and creates extreme edge sharpness. This stone is applied wet.  
Grain 1500.

	Item-No.
Arkansas nature sharpening stone	1002558



### EDGE ANGLE PRO

The professional angle at World Cup level; wide, adjustable aluminum file clamp and ergonomic shape; suitable for left and right-handed persons; effectively prevents rubbing of metal chips into the coating.

	Item-No.
Angle: 87°	1031024
Angle: 88°	1031023
Angle: 89°	1031022



### ALU-OXYD-STONE

**course, red:** for softening the edge; indispensable before using the finn file.  
**fine, grey:** for edge finishing (use wet). For very hard, "burned" edges.

	Item-No.
coarse, red: 150 x 17 x 17 mm / 5.9" x 0.7" x 0.7"	1031036
coarse, red: 120 x 6 x 20 mm / 4.7" x 0.2" x 0.8"	1075130
fine, grey: 120 x 6 x 20 mm / 4.7" x 0.2" x 0.8"	1075129



### SIDEWALL PLANER PRO

For precise cutting free of the side edge for all ski bodies. The lateral ball bearing and the height-adjustable hold-down ensure optimum guidance on the ski. This allows a precise cutting of the side cheek. Distance, cutting and tilt angle individually adjustable. Incl. 4-edge knife for depositing and smoothing the side cheek.

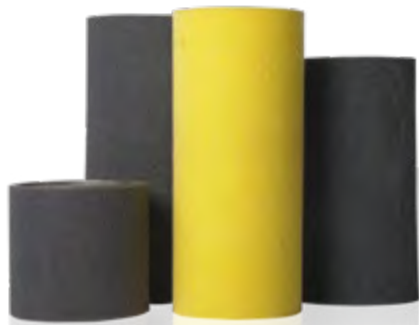
	Item-No.
sidewall planer Pro	1031021
Replacement blade Ø 10 mm / 0.4"	1031085



### GUMMI STONE

Gummi stones are used for manual breaking and deburring of steel edges. The cubes are perfect for sharing with your customers after the ski service or for sale.

	Item-No.
big, 120 x 65 x 31 mm / 4.7" x 2.6" x 1.2", 1 pcs.	750236
small, 63 x 39 x 20 mm / 2.5" x 1.5" x 0.8", 5 pcs.	1075125
cubes, 200 g (appr. 20 cubes)	1075126



## UNIVERSAL WAX POLISHING BELTS

Machine	Item-No.
100 mm / 3.9"; for BWM 100 B	1001318
150 mm / 5.9"; for BWM 150 B	1001315
200 mm / 7.9"; for SF-1, SF-4 with waxing module	1035317
300 mm / 11.8"; for BWM 300 B	1001317
350 mm / 1'2"; for BWM 350 B und BWM 350 Pro	1001316
350 mm / 1'2"; High-performance wax belt with a long service life; for BWM 350 B & BWM 350 Pro, yellow	1007245
350 mm / 1'2"; long service-life; for BWM 350 Pro	1010628
100 x 800 mm / 3.9" x 2.7"; for BWM 100	750339
300 x 800 mm / 11.8" x 2.7"; for BWM 300	1001319



## WAXING BRUSH WHITE

Easy and safe to use for optimal wax application on skis and snowboards.

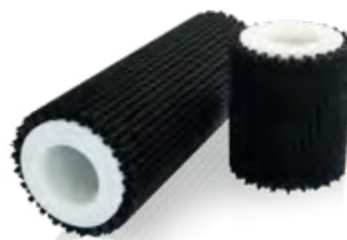
white, for BWM 350 C	Item-No.
waxing brush white	1039022



## WAXING BRUSH GREY

Easy and safe to use for optimal wax application on skis and snowboards.

grey, for BWM 350 C Digital	Item-No.
waxing brush grey	1053891



## STRUCTURE BRUSH NYLON

with curled bristles.

for BWM 350 Pro & BWM 350 C built in or after 2014	Item-No.
structure brush nylon	1015619
for SF-1	Item-No.
structure brush nylon	1035318



## STRUCTURE BRUSH HORSE HAIR

Our new horse hair brush makes your BWM fit for the race service. The wax is brushed very finely with this brush and thus creates a high-quality finish.

For BWM 350 C & BWM 350 Pro	Item-No.
structure brush horse hair	1055495

## ROTOR BRUSH SYSTEM



### ROTATING BRUSHES

With our "Rotor Brush System" you have an optimal brush set for skis and snowboards. The application with the "rotor brushes" saves time and exhausting brushing by hand when preparing the bases skis and snowboards.

brush width: 11.5 cm / 4.5"

### HOLDER & PROTECTION FOR ROTATING BRUSHES

The holder made of high quality stainless steel can be clamped in any drill. It is equipped with a unique click quick release mechanism. For occupational safety a universally applicable protection is available.

	Item-No.
holder	1075121
protection	1075120

### SPEED BRUSH NYLON

Universal brush for all work steps. Especially suitable for polishing finish products.

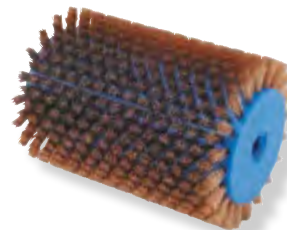
	Item-No.
speed brush nylon	1006404



### SPEED BRUSH HORSE HAIR

Ski base brush for brushing out gliding waxes. Bristle length 5 mm / 0.2".

	Item-No.
speed brush horse hair	1006406



### SPEED BRUSH BRONZE

Brush for base cleaning and basic preparation. Use only with occupational safety.

	Item-No.
speed brush bronze	1075123



### SPEED BRUSH FLEECE

Seamless fleece roll for optimal and gentle application of finishing products.

	Item-No.
speed brush fleece	1075122

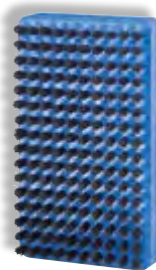




### BASE BRUSH NYLON

Universal brush for all steps of ski preparation. Ideal for brushing finishing products.  
125 x 70 mm / 4.9" x 2.8".

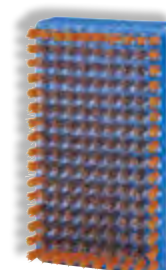
	Item-No.
base brush nylon	1031037



### BASE BRUSH HORSE HAIR

For brushing during preparation with glide waxes and speed products.  
125 x 70 mm / 4.9" x 2.8".

	Item-No.
base brush horse hair	1031038



### BASE BRUSH BRONZE

Rough copper brush for cleaning the ski base before waxing and for brushing hot waxes. Ideal for exposing the structure.  
125 x 70 mm / 4.9" x 2.8".

	Item-No.
base brush bronze	1075115



### WAX AND DIRT REMOVER

For removing wax and dirt residues; non-toxic and odorless.

	Item-No.
1 L / 0.26 gal wax remover	1075116
10 L / 2.6 gal wax remover	1075117



### WAX POLISH SPONGE

To care for the skis before and after waxing; also suitable for cleaning the skis with wax remover.  
Material: Scotch-Brite. **Pack of 5 pcs.**  
Front side: grain size coarse (brown)  
Back: grain size fine (white)

	Item-No.
wax polish sponge	750231



### WAX POLISHING PADS

With these pads, you can quickly and easily remove excess wax from the top or side edge. If you use the pad to polish rubbish wax, you can use it to expose the pad structure.  
**Pack of 10 pcs. 152 x 229 mm / 6" x 9".**

ultra fine, 10 pcs.	1075118
fine, 10 pcs.	1075119

**ALPINE WAX SCRAPER, PLASTIC**

Sliced, practical handy scraper for removing surplus hot wax.

150 x 60 x 5 mm / 5.9" x 2.4" x 0.2"

	Item-No.
alpine wax scraper, plastic	1002619

**ALPINE WAX SCRAPER, METAL**

Nirosta-special wax scraper with case.  
115 x 60 x 0.8 mm / 4.9" x 2.4" x 0.03"

	Item-No.
alpine wax scraper, metal	1002615

**ALPHA MIX YELLOW / ULTRA MIX BLUE**

Highest quality base, foundation and training wax based on hydrocarbon. **Pack of 6 x 150 g / 5.3 oz.**

**yellow:** For soft, new & fine-grained snow, 0° to -4°C.

**blue:** For cold, especially old and aggressive snow, -8° to -20°C.

	Item-No.
Alpha Mix Yellow	1075179
Ultra Mix Blue	1075190

**SNOWBOARD WAX SCRAPER, PLASTIC**

Sliced, wide special scraper for snowboards.  
320 x 70 x 5 mm / 1'1" x 2.8" x 0.2"

	Item-No.
snowboard wax scraper	1002618

**SPECIAL WAX SCRAPER STAINLESS STEEL**

Stainless steel scraper for removing excess poly material from the base.

	Item-No.
160 x 30 x 3 mm / 6.3" x 1.2" x 0.1"	1075113
350 x 30 x 3 mm / 1'2" x 1.2" x 0.1"	1075114

**NATURAL WAX FLUID**

Universal liquid wax suitable for all snow types and temperatures. Practical all-in-one solution in pocket format with integrated sponge applicator and polishing felt. Available for presentation and sale at your shop cash till in an attractive presentation stand.

**Pack of 12 x 100 ml / 0.03 gal.**

	Item-No.
Natural Wax Fluid	1075189

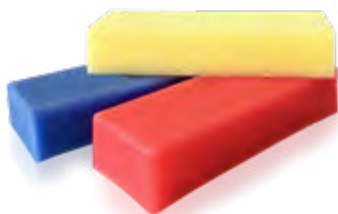


## BETAMIX WAX BAR RED

Highest quality base, foundation and training wax based on hydrocarbon. For all types of snow. For snow temperatures from -4° to -14°C.

Pack of 5 x 190 g / 6.7 oz.

	Item-No.
betamix wax bar	1076741



## WAX BAR FOR SF-4

Wax bar for different snow temperatures. For use in the wax module of the SF-4 service robot.

Length 190 mm / 7.5".

	Item-No.
universal	1077351
warm, 0° to -8°C	1077352
cold, -8° to -20°C	1077353



## UNIVERSAL WAX

Universal service wax for all snow types and temperatures.

	Item-No.
Wax bar, 4 x 250g / 0.55 lb	750409
Wax pastilles, 5 kg / 11 lb	1075185
Wax pastilles, 1 kg / 2.2 lb	750412



## WAX BAR FOR SF-1

Universal wax bar for all snow temperatures. For use in the wax module of the SF-1 service robot.

Length 190 mm / 7.5".

	Item-No.
wax bar universal	1035379



## HIPO WAX

The High Performance Organic Wax sets new standards. It is made of meadow foam from California, which is 95 % from long-chain, nonsaturated fatty acids. It gives the wax a huge depth effect, high stability on the base and excellent gliding property.

500 g / 1.1 lb each (2 x 250g / 2 x 0.55 lb).

**WHITE:** Allround wax for normal snow conditions; for temperatures from -12° to 4°C.

**RED:** for damp to wet snow; for temperatures from -12° to -2°C.

**BLUE:** for medium to cold, aggressive snow conditions, e.g. artificial snow; for temperatures from -8°C to -16°C.

**PURPLE:** for extra cold snow and dry conditions; for temperatures below -16°C.

	Item-No.
HIPO wax - white	1074724
HIPO wax - red	1050815
HIPO wax - blue	1050818
HIPO wax - purple	1050825

# GIGAGLIDE

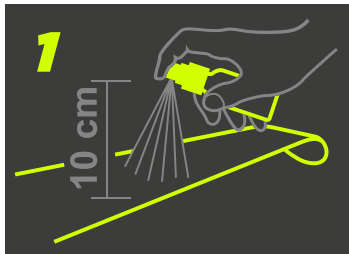
## THE NATURE & ENVIRONMENT FRIENDLY WAX ALTERNATIVE

GigaGlide is the best alternative to ski wax. The direct gliding fluid is suitable for all types of skis and snowboards and 100% environmentally friendly.

### TAKE CARE OF THE ENVIRONMENT AND SAVE COSTS!

The direct gliding spray is quick and easy to use and extremely long lasting. This saves you time and costs. Apply once and enjoy up to 7 days of fun on the slopes - and at the same time protect the environment!

### MANUAL APPLICATION:



#### STEP 1

Spray from 10 cm / 3.9" distance and disperse



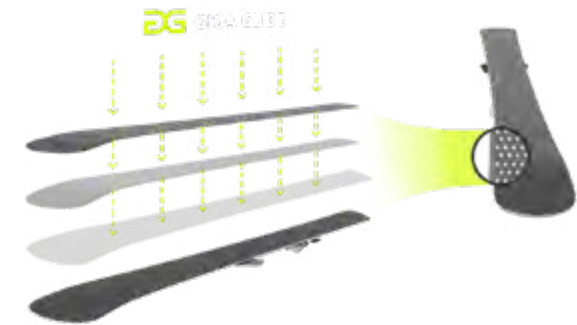
#### STEP 2

Wait 2-5 minutes



#### STEP 3

Time to get on the ski slope!



High depth effectiveness ensures particularly good gliding properties.



### GIGAGLIDE TOUR

Ideal for ski tourers, the fur stays on the ski, but is easier to remove. Suitable for all snow types and temperatures. Practical spray bottle for resale to your customers.

For the easy application in your workshop you can use the brand-new application device GLIDE MASTER (see page 50-51).

	Item-No.
GIGAGLIDE TOUR, 35 ml, 1.2 oz	1076540



# GIGAGLIDE

## YOUR BENEFITS AT A GLANCE:

- fast and easy to use
- improved gliding properties in extreme snow conditions
- replaces wax completely
- suitable for cold bases
- 1 bottle is enough for 5 pairs of skis or 3 snowboards
- 1 application - up to 7 / (14) days of fun on the slopes
- applicable to waxed and unwaxed skis
- can be used for every ski and snowboard discipline



### GIGAGLIDE PRO

Plastic container with sponge attachment for easy, manual application. For resale to your customers.

	Item-No.
<b>GIGAGLIDE PRO, 50 ml, 1.7 oz</b>	1076541
<b>GIGAGLIDE PRO, 100 ml, 3.4 oz</b>	1076542



### GIGAGLIDE SERVICE

100% environmentally friendly ski wax alternative for optimum gliding on the slopes. Suitable for all types of skis and boards. For use in your workshop with the new GLIDE MASTER.

	Item-No.
<b>GIGAGLIDE SERVICE, 1 L, 0.26 gal</b>	1077795
<b>GIGAGLIDE SERVICE, 5 L, 1.3 gal</b>	1076538



### GIGAGLIDE SERVICE+

Special recipe for even better gliding and faster acceleration of skis and boards. For use in your workshop with the new GLIDE MASTER.

	Item-No.
<b>GIGAGLIDE SERVICE+, 1 L, 0.26 gal</b>	1077796
<b>GIGAGLIDE SERVICE+, 5 L, 1.3 gal</b>	1076539



### GRINDING ADDITIVE

Water-soluble coolant free of mineral oil with long endurance and stable ph-value. Reliable protection of your machine against corrosion and good cleaning effect; high removal rate.

Mixing ratio with water: 3:100;

Reading value on the refractometer: 2

	Item-No.
grinding additive, 10 kg, 22 lb	750331



### HAND REFRACTOMETER

For measuring coolant ratio mixture. Helps you to save coolant, repair costs and your time.

Attention: Mind the conversion factor. Concentration in % = factor of refractometer x 2.7 (see safety data sheet)

	Item-No.
Hand refractometer	1028145



### WORKSHOP FLOOR CLEANER

Environmentally friendly cleaner for use in high-pressure cleaners (concentration 3 - 5%), floor cleaning machines (concentration 3 - 10%) or manually. Powerful grease-releasing, yet mild and gentle on materials.

	Item-No.
floor cleaner, 5 L / 1.3 gal	1076722



### MACHINE CLEANER

Special cleaner with protection against corrosion.

	Item-No.
machine cleaner, 5 L / 1.3 gal	100349



### SYSTEM CLEANER

For the careful and rapid removal of contaminants and microorganisms in grinding machines, their coolant tanks and pipes. The system cleaner is added to the old emulsion 8-24h pre-mixed before pumping. **Dosage: 1-2%** (calculated on circulating emulsion)

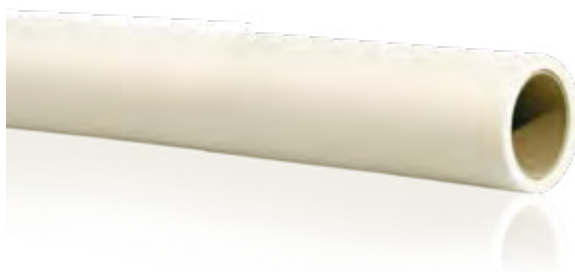
	Item-No.
system cleaner, 1 L / 0.26 gal	1046886



### DEFOAMER

For use with unusual foaming in your grinding machine. Recommended concentration: 0.003-0.03% (about 25 ml per 100 l / 0.85 oz per 26.4 gal)

	Item-No.
defoamer, 250 ml / 0.07 gal	1075317



## FILTER PAPER ROLL

For all service machines. The filter paper has to lay between the filter sock and the micro filter mat to make the best possible use of your machine. **1m / 3'3" wide - 50 running meters / 164'**

	Item-No.
for diverse machines	400604
special filter roll for SF-4	1038438
special filter roll for SF-1	1077566



## PH MEASURING STRIPS

PH value measuring strip for measuring the grinding water pH. **Pack of 100 pcs.**

	Item-No.
PH strips, 100 pcs.	1075320



## FILTER HOSE & FILTER SOCK

For all service machines; can be cut to the right length as needed.

Filter hose: **20 m roll** packed in foil.

Filter sock: **Pack of 20 pcs** à 0,8 m / 2'7".

	Item-No.
filter hose, 20 m roll	1029066
filter sock, 20 pcs à 0,8 m / 2'7"	1070352



## HOSE GUN

For easy cleaning of your machine.

	Item-No.
hose gun	1002116



## MICRO FILTER MAT / Pack of 5 pieces

Machine	Item-No.
SF-3	1042911
SF-2 Pro	1031951
PROFI 4, PROFI 4 VARIO	1034020
PROFI S200; PROFI S350, B350	1031950
PROFI S150	1029322
SN 350 Profi, ESM Junior	1009039
DTS-U Pro with inserted, light grey tank	1024839
DTS-U Pro, DTS-U II, DTS II, PROFI B VARIO with moveable, anthracite tank	1030107
KFM-U, KFM-US, KFM-UK	1007026
KSM-F	1026004
KSM	1026008
Other machines (e.g. PROFI 1-3, TSM-E-Multi)	1001478



## BOOT DISINFECTANT

Perfectly cared ski boots are a must-have for every rental shop. But to keep the hygiene level high when often being used, only the right disinfection emulsion can help. Disinfect Plus in combination with Fresh Air Lemon is an invincible combination for your rental shop!

- FULL EFFECTIVENESS IN JUST 30 SECONDS
- ELIMINATES FOOT ODOR AND REFRESHES THE FOOT
- APPROVED AS A MEDICINE BY THE FEDERAL HEALTH OFFICE
- SAFE ON THE SKIN

For rent and storage systems, as well as spray bottles.

1 L / 0.3 gal concentrate for 100 L / 26.4 gal mixed formulation (10 ml / 0.003 gal concentrate to 1 L / 0.3 gal water).

	Item-No.
<b>Disinfect Plus</b>	1022310

1 L / 0.3 gal concentrate for approx. 200 L / 52.8 gal mixed formulation (5 ml / 0.001 gal concentrate to 1 L / 0.3 gal water).

	Item-No.
<b>Fresh Air Lemon</b>	1022309

5 L / 1.3 gal premixed formulation Disinfect Plus incl. Fresh Air Lemon

	Item-No.
<b>premixed formulation</b>	1075316



## HELMET DISINFECTANT

5 L / 1.3 gal premixed formulation of helmet disinfectant. For rent and depot systems or spray bottles. The use of the pressure pump vaporizer is recommended for manual application. Special formula for the disinfection of helmets.

	Item-No.
<b>premixed fomulation</b>	1077166



## FLOOR STAND & WALL HOLDER

Floor stand or wall holder with paper roll. For easy tearing and easy refilling.

	Item-No.
<b>floor stand &amp; paper roll</b>	1002732
<b>wall holder &amp; paper roll</b>	1075232



## PRESSURE PUMP VAPORIZER

Practical vaporizer to apply wax remover or disinfectants effortlessly. (Capacity: 1 L / 0.3 gal). With the 30 cm / 11.8" long and curved metal pole, the disinfection emulsion can be easily sprayed into ski boots.

	Item-No.
<b>pressure pump vaporizer</b>	1075314
<b>spray attachment metal lance</b>	1075315



## SPARE PAPER ROLL

Paper roll for floor stand or wall holder.  
600 m / 1969' long; 24 cm / 9" wide; double-ply.

	Item-No.
<b>paper roll</b>	750330





## BRAKE RETAINER RUBBER BAND RED

Strong and elastic rubber ring for fixing the ski stopper of alpine skis during grinding operation.  
Emulsion resistant; **Pack of 200 pcs.**

	Item-No.
red	100345



## BRAKE RETAINER RUBBER BAND BLUE - FREERIDE

Extra strong and elastic rubber ring for fixing the ski stoppers especially of freeride skis.  
Emulsion resistant; **Pack of 200 pcs.**

	Item-No.
blue - FREERIDE	1059614



## SPRAY PAINT

For refinishing defects in paint work.  
**400 ml / 0.1 gal.**

	Item-No.
Reichmann blue	1012268
anthracite	1012272



## RUBBER MAT

Ideal anti-slip effect for machines with water use;  
**780 x 590 x 18 mm / 2'7" x 1'11" x 0.7".**

	Item-No.
rubber mat	1075348



## WORKING GLOVES

Perfect wet grip gloves; they are also resistant to cutting and emulsion. **Pack of 1 pair.**

	Item-No.
size 8	750374
size 9	750376
size 10	750378



## SAFETY GLASSES

Safety always comes first. The UVEX coated safety glasses offer optimal eye protection coupled with high wearing comfort.

	Item-No.
safety glasses	1075347



### ONE-HAND GREASE GUN

High-quality grease gun. Easy to operate with only one hand due to special construction. This facilitates work in hard to reach areas.

	Item-No.
one-hand grease gun	750289



### GREASE CARTRIDGE

Waterproof special oil for the one-hand grease gun. Maintains the life of your machine with regular use.  
Content 400 g / 0.88 lb.

	Item-No.
grease cartridge	1008945



### VACUUM SUCTION LIPS

Replacement lip for vacuum suction plate, **Pack of 2 pcs.**  
For SF-2 & SF-2 Pro

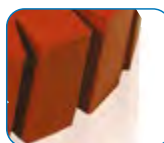
	Item-No.
vacuum suction lips	1021343



### FEED RUBBER RING

Spare feed rubber ring for the new feed system in the DTS-U II, DTS-II and LS-1 RACE.

	Item-No.
rubber ring, red	1072593



### FEED RUBBER RINGS

For all service machines with feed wheel – for better grip during the grinding.

	Item-No.
rubber ring, white	1005283
rubber ring, red	1000756



### O-RINGS SIDE EDGE

Spare part for replacement of the support roller of the side edge on your machine.

	Item-No.
O-rings	200399



## SIDE EDGE GRINDING BELTS

Grinding belts for the side edge, 20 x 1200 mm / 0.8" x 3'11".

### SIDE EDGE GRINDING BELT 1

For all Reichmann machines with side edge unit.

Pack of 5 pcs.

	Item-No.
20 x 1200 mm / 0.8" x 3'11", grain 80	400476
20 x 1200 mm / 0.8" x 3'11", grain 100	400477
20 x 1200 mm / 0.8" x 3'11", grain 120	400586

### SIDE EDGE GRINDING BELT CERAMIC 2

Longer service life, even higher-quality grinding result.

Pack of 10 pcs.

	Item-No.
20 x 1200 mm / 0.8" x 3'11", grain 80	1075434
20 x 1200 mm / 0.8" x 3'11", grain 100	1075435

### DIAMOND SIDE EDGE FINISHING BELT 3

For further refinement of the side edge after normal pre-grinding with the side edge grinding belt. Long service life, cool cut.

	Item-No.
20 x 1200 mm / 0.8" x 3'11"	1006096



## CERAMIC BELTS ready-to-use

The ceramic belts 350 x 1500 mm / 1'2" x 4'11" specially developed by Reichmann are delivered ready to use. This means you can use the belts immediately.

### BASIC BELT

Special basic belt for fibre-free pre-grinding of skis and boards. For the application in the **PROFI B VARIO**, **PROFI B**, **PROFI 4 VARIO**, **PROFI 4**, **SF-2 Pro**, **SF-3 BS**, **CUB**.

	Item-No.
ceramic belt for basic belt grinding	1060371

### STRUCTURING BELT

Special ceramic belt for structure grinding. Also particularly suitable for structuring convex or concave snowboards.

For the application in the **PROFI B VARIO** and the **PROFI 4 VARIO**.

	Item-No.
ceramic belt for structuring	1068329

### BASIC-STRUCTURE-COMBINATION

Special basic-structuring belt combination for pre-grinding and structure grinding of skis without loss of time due to belt changes. For the application in the **PROFI B VARIO** and the **PROFI 4 VARIO**.

	Item-No.
ceramic belt basic-structuring	1068330



## CERAMIC BELT

The continuous self-sharpening of this belt guarantees economical grinding thanks to long service life. Please dress the belt slightly before initial use to lower the aggressive properties.

for **PROFI 4 (VARIO)**, **PROFI B VARIO**, **PROFI B**, **SF-2/Pro**, **RS2000**, **SF-3 BS**, **CUB**

	Item-No.
350 x 1500 mm / 1'2" x 4'11", grain 80	1048799
350 x 1500 mm / 1'2" x 4'11", grain 100	1075395

for **PROFI 1-3**, **PROFI B350**, **PROFI B Prof.**, **MSR 350**, **TSM E-Multi 1/2**, **SN 350 PROFI**

	Item-No.
350 x 2000 mm / 1'2" x 6'7", grain 80	1048798
350 x 2000 mm / 1'2" x 6'7", grain 100	1075396



### TRIZACT GRINDING BELT

Lint-free and equal structure as well as precise edge tuning thanks to the pyramid arrangement of the abrasive grains. Ideal for the high-quality finishing of snowboards.

for PROFI 4 (VARIO), CUB,  
PROFI B, PROFI B VARIO

	Item-No.
350 x 1500 mm / 1'2" x 4'11"	1075401

for PROFI 1-3, SN 350 PROFI, TSM-E-Multi  
1/2, PROFI B 350, PROFI B Prof.

	Item-No.
350 x 2000 mm / 1'2" x 6'7"	1075402



### SCOTCH BELT for deburring and cold waxing

This belt is the multitalent among the belts with premium quality. Deburring, polishing and cold waxing is done in one operation. It is suitable for both wet and dry grinding. Thanks to the reinforced fibre fleece on the film base, the belt ensures an enormous service life, low belt stretching and a high tear strength.

for PROFI 1/2; TSM E-Multi,  
DBM, TSM-N2-SV

	Item-No.
150 x 2000 mm / 5.9" x 6'7"	750028

for SN 300,  
TSM E-Multi 1/2

	Item-No.
300 x 2000 mm / 11.8" x 6'7"	401001

for PROFI 4 (VARIO), PROFI B VARIO, PROFI B,  
SF-2/Pro, RS 2000, SF-3 BS, CUB

	Item-No.
350 x 1500 mm / 1'2" x 4'11"	1001895

for PROFI 1-3, PROFI B350, PROFI B Prof.,  
SN 350 PROFI, MSR 350, TSM E-Multi 1/2

	Item-No.
350 x 2000 mm / 1'2" x 6'7"	400982



### CORK FINISH BELT

This belt is used after tuning to get a lint-free and smooth base. It is perfectly suitable for edge tuning and finishing.

for PROFI 1/2; TSM E-Multi,  
DBM, TSM-N2-SV

	Item-No.
150 x 2000 mm / 5.9" x 6'7"	401070

for SN 300,  
TSM E-Multi 1/2

	Item-No.
300 x 2000 mm / 11.8" x 6'7"	401071

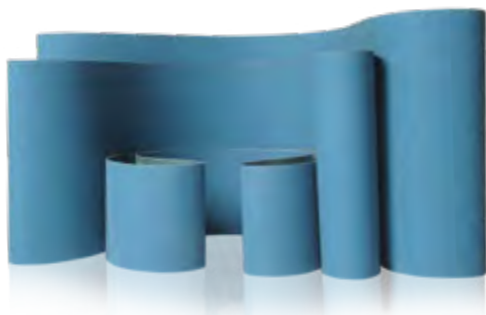
for PROFI 4 (VARIO), PROFI B VARIO, PROFI B,  
SF-2/Pro, RS 2000, SF-3 BS, CUB

	Item-No.
350 x 1500 mm / 1'2" x 4'11"	1014841

for PROFI 1-3, PROFI B350, PROFI B Prof.,  
SN 350 PROFI, MSR 350, TSM E-Multi 1/2

	Item-No.
350 x 2000 mm / 1'2" x 6'7"	401072





## GRINDING BELTS, Pack of 5 pcs.

The belt produces a high quality result on side and base edges. The high-quality base and edge grinding belt convinces due to the controlled fracture behaviour of the abrasive grains, thus enabling to produce new cutting edges again and again.

Size	Grain	Machine	Item-No.
150 x 2000 mm 5.9" x 6'7"	Grain 80	for PROFI 1/2, TSM E-Multi, DBM, TSM-N2-SV	400492
	Grain 100		400493
	Grain 120		400494
200 x 1500 mm 7.9" x 4'11"	Grain 80	for SF-1	400848
	Grain 100		1032851
	Grain 120		400589
300 x 2000 mm 11.8" x 6'7"	Grain 80	for SN 300, TSM E-Multi 1/2	400728
	Grain 100		400727
	Grain 120		400986
350 x 1500 mm 1'2" x 4'11"	Grain 80	for PROFI 4 (VARIO), PROFI B, PROFI B VARIO, SF-2/Pro, RS2000, SF-3 BS, CUB	1000726
	Grain 100		1000727
	Grain 120		1000728
350 x 2000 mm 1'2" x 6'7"	Grain 80	for PROFI 1-3, PROFI B350, PROFI B Prof., MSR 350, TSM E-Multi 1/2, SN 350 PROFI	400729
	Grain 100		400730
	Grain 120		400985



## CORUNDUM - GRINDING STONE

For breaking new grinding belts.  
100 x 50 x 25 mm / 3.9" x 2" x 1".

	Item-No.
Corundum grinding stone	750250

## TIP

Please ensure sufficient cooling and correct concentration of the grinding emulsion. For measuring the concentration, a refractometer is recommended (see p. 90). The correct concentration of the grinding emulsion prevents the belt from sticking quickly, thus increasing its service life.

# DRESSING DIAMONDS

## for all structures

The dressing diamonds are used to bring the desired structure to the stone. Important: The finer the pin the finer the structure. The whole picture of the structure comes from the arrangement of the diamond pins (rhomboid or parallel) and the dressing parameters.

The advantages of our synthetic diamonds are the consistency of the defined structures and a higher service life because of their hard diamond pins. For the right dressing parameter and for developing your own structures, we provide you the structure development online platform, called PatRich, at [www.reichmann.com/patrich](http://www.reichmann.com/patrich).

### RHOMBOID ARRANGEMENT OF PINS

The rhomboid arrangement of the pins has the effect of more exact and sharper structure results. With rhomboid dressing diamonds the cutting is more flat and 40% broader as the pin intensity itself. (For example: pin intensity: 0.6 mm = 0.7 mm profile width / 0.02'' = 0.03'' profile width).

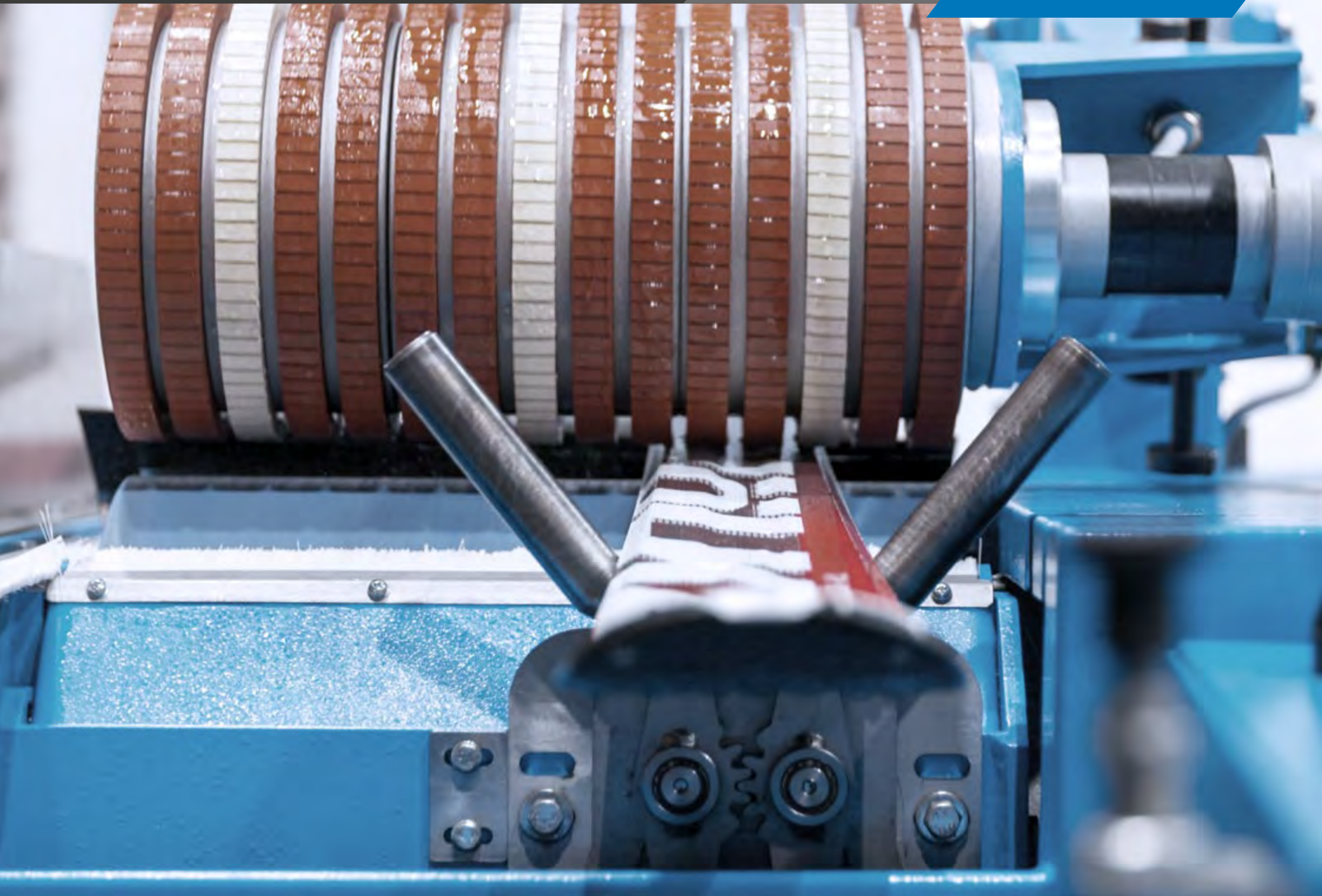


### PARALLEL ARRANGEMENT OF PINS

With an arrangement of parallel diamond pins a u-shaped profile evolves with precise cutting width and large-scaled structures. Therefore a diamond with parallel arrangement is perfect for fine structuring.



Item-No.	1014936	1025477	1026957	1048807*	1031545	1048808
Arrangement of pins	RHOMBOID	RHOMBOID	RHOMBOID	RHOMBOID	PARALLEL	PARALLEL
Dimensions	0.6 mm / 0.024"	0.6 mm / 0.024"	0.4 mm / 0.016"	0.8 mm / 0.031"	0.4 mm / 0.016"	0.6 mm / 0.024"
	* only for pre-grinding					
Machine						
SF-1		X	X	X		X
SF-3, SF-4		X		X		X
SF-2 Pro (from 2012)		X				X
SF-2 / Pro (until 2011)	X					
PROFI 4 (from 2014) PROFI S350		X		X		X
PROFI 1 - 4 (until 2013)	X					
PROFI S150 PROFI S200		X	X	X	X	X
TSM-S-V, TSM-E-Multi, ESM Junior	X					
RS 2000	X					





# GRINDING STONES

## top in quality

Reichmann grinding stones are perfectly matched to your needs. For a better orientation we have packaged the stones into four categories. On the next double pages you will find the dresser which is paired with the right stone. Here you will find the right combination.

### ALLROUND

High efficiency and structure quality for all Alpine and Nordic needs.



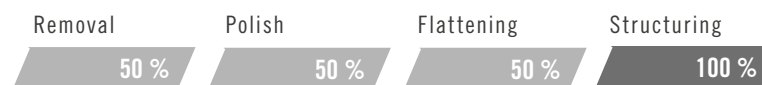
### ALPINE PRE-GRINDING

Best performance, optimized quality and abrasion performance due to the stability of the edging inlet.



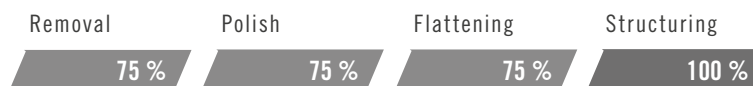
### ALPINE STRUCTURE

Best performance with focus on structure variation and slide property for Alpine.



### NORDIC

Best performance with focus on structure variation and slide property. Excellent structure quality because of the stability of the edging inlet.



# GRINDING STONES: TOP IN QUALITY

Machine	Dimensions	Colour	Item-No.	Application	Recommendation dressing diamond p.103
SF-1	Ø 300 mm; B = 200 mm / Ø 11.8"; W = 7.9"	ruby-red brown	1036075 1040505	ALPINE STRUCTURE ALPINE PRE-GRINDING	Structure diamond: 1048808 Pre-grinding diamond: 1048807
SF-3 2S, SF-3 3S	Ø 300 mm; B = 200 mm / Ø 11.8"; W = 7.9"	ruby-red brown	1048469 1050104	ALPINE STRUCTURE ALPINE PRE-GRINDING	Structure diamond: 1048808 Pre-grinding diamond: 1048807
SF-3 SB, SF-3 3S	Ø 300 mm; B = 350 mm / Ø 11.8"; W = 1'2"	rose	1046159	ALLROUND	Structure diamond: 1048808
SF-2 Tool holding: conical (until end of 2011)	Ø 300 mm; B = 350 mm / Ø 11.8"; W = 1'2"	rose blue brown	1048063 1044149 1051434	ALLROUND ALPINE STRUCTURE ALPINE PRE-GRINDING	Allround diamond: 1014936 Allround diamond: 1014936 Allround diamond: 1014936
SF-2 Tool holding: cylindrical (from 2012)	Ø 300 mm; B = 350 mm / Ø 11.8"; W = 1'2"	rose rose brown	1047599 1046184 1047094	ALLROUND ALPINE STRUCTURE ALPINE PRE-GRINDING	Allround diamond: 1025477 Structure diamond: 1048808 Allround diamond: 1025477
SF-4 S (wide stone)*	Ø 350 mm; B = 350 mm / Ø 1'2"; W = 1'2"	blue	1059880	ALLROUND	Structure diamond: 1048808
SF-4 2S (2 x 165 mm stone)* one double stone module	Ø 350 mm; B = 165 mm / Ø 1'2"; W = 6.5"	brown ruby-red	1059869 1064409	ALPINE PRE-GRINDING ALPINE STRUCTURE	Pre-grinding diamond: 1048807 Structure diamond: 1048808
SF-4 2S-2S (4 x 165 mm)* double stone module 1	Ø 350 mm; B = 165 mm / Ø 1'2"; W = 6.5"	brown	1059869	ALPINE PRE-GRINDING	Pre-grinding diamond: 1048807
double stone module 2		ruby-red blue	1064409 1059877	ALPINE STRUCTURE ALPINE PRE-GRINDING (2x)	Structure diamond: 1048808 Pre-grinding diamond: 1048807
PROFI 4 Tool holding: conical (until end of 2011)	Ø 300 mm; B = 350 mm / Ø 11.8"; W = 1'2"	rose blue brown	1043724 1044149 1051434	ALLROUND ALPINE STRUCTURE ALPINE PRE-GRINDING	Allround diamond: 1014936 Allround diamond: 1014936 Allround diamond: 1014936
PROFI 4 Tool holding: cylindrical (from 2012)	Ø 300 mm; B = 350 mm / Ø 11.8"; W = 1'2"	rose blue brown	1046159 1049896 1047094	ALLROUND ALPINE STRUCTURE ALPIN VORSCHLIFF	Allround diamond: 1025477 Structure diamond: 1048808 Pre-grinding diamond: 1048807
PROFI S350 Tool holding: conical (until end of 2011)	Ø 300 mm; B = 350 mm / Ø 11.8"; W = 1'2"	rose brown	1043724 1051434	ALLROUND ALPINE PRE-GRINDING	Allround diamond: 1025477 Pre-grinding diamond: 1048807

plus deposit for flange

Item-No.

1038607

\*without flange

Machine	Dimensions	Colour	Item-No.	Application	Recommendation dressing diamond p.103
<b>PROFI S350</b> Tool holding: cylindrical (from 2012)	Ø 300 mm; B = 350 mm / Ø 11.8"; W = 1'2"	rose blue brown	1046159 1049896 1047094	ALLROUND ALPINE STRUCTURE ALPINE PRE-GRINDING	Allround diamond: 1025477 Structure diamond: 1048808 Pre-grinding diamond: 1048807
<b>PROFI S200</b> Tool holding: conical (until end of 2011)	Ø 300 mm; B = 200 mm / Ø 11.8"; W = 7.9"	rose ruby-red brown rose	1024528 1036075 1040505 1031973	ALLROUND ALPINE STRUCTURE ALPINE PRE-GRINDING NORDIC	Allround diamond: 1026957 Structure diamond: 1048808 Pre-grinding diamond: 1048807 Nordic diamond: 1031545
<b>PROFI S200</b> Tool holding: cylindrical (from 2012)	Ø 300 mm; B = 200 mm / Ø 11.8"; W = 7.9"	rose ruby-red brown rose	1047017 1047604 1047605 1047606	ALLROUND ALPINE STRUCTURE ALPINE PRE-GRINDING NORDIC	Allround diamond: 1026957 Structure diamond: 1048808 Pre-grinding diamond: 1048807 Nordic diamond: 1031545
<b>PROFI 1 und TSM-E-Multi 150</b>	Ø 300 mm; B = 150 mm / Ø 11.8"; W = 5.9"	rose	750106	ALLROUND	Allround diamond: 1014936
<b>TSM-S-V und TSM-E-Multi 120</b>	Ø 300 mm; B = 120 mm / Ø 11.8"; W = 4.7"	rose	750099	ALLROUND	Allround diamond: 1014936
<b>PROFI S150</b>	Ø 250 mm; B = 150 mm / Ø 9.8"; W = 5.9"	rose rose	1006982 1027323	ALLROUND NORDIC	Allround diamond: 1026957 Nordic diamond: 1031545
<b>ESM Junior</b>	Ø 250 mm; B = 150 mm / Ø 9.8"; W = 5.9"	rose	1006982	ALLROUND	Allround diamond: 1014936
<b>ESM</b>	Ø 250 mm; B = 120 mm / Ø 9.8"; W = 4.7"	rose	750098	ALLROUND	Allround diamond: 1014936

## PULLER for grinding stones

universal for pulling all Reichmann grinding stones.

	Item-No.
<b>puller for grinding stones</b>	1046502



## CERAMIC SCRAPER

Planes the stone and avoids grain tracks in bases.

	Item-No.
<b>ceramic scraper</b>	750345



**TUNING DISCS** for the base edge (without flange)

for SF-1\*

	Item-No.
Ø 250 x 80 mm / 9.8" x 3.1"	1032393

for DTS-U II, DTS-U, DTS-U Pro,  
SF-2, SF-2 Pro, SF-3, SF-4\*

Item-No.

	Item-No.
1 Ø 250 x 55 mm / Ø 9.8" x 2.2"	1013178

for KFM-U up to 2002\*

Item-No.

	Item-No.
2 Ø 300 x 55 mm / Ø 11.8" x 2.2"	750385

for KFM-U from 2003

Item-No.

	Item-No.
3 Ø 300 x 140 mm / Ø 11.8" x 5.5"	1011109

for KFM-U from 2012

Item-No.

	Item-No.
Ø 300 x 170 mm / Ø 11.8" x 6.7"	1043091

\* 2 discs are required for one machine.

**TUNING DISCS** for the side edge

for KSM-F, KFM-US

Item-No.

	Item-No.
4 Ø 250 x 20 x 51 mm / Ø 9.8" x 0.8" x 2.0"	1008185

5 Ø 250 x 20 x 150 mm / Ø 9.8" x 0.8" x 5.9"	750384
--	--------

**DRESSING DIAMONDS** for the base edgefor SF-2 Pro, DTS-U II, DTS-U Pro,  
SF-1, SF-3, SF-4\*

Item-No.

	Item-No.
7 Ø 0.8 mm / 0.03"; for base edge	1041792

for KFM-U, KFM-US, KFM-UK  
up to 2012

Item-No.

	Item-No.
6 Ø 150 mm / Ø 5.9"; for base edge	951210

for KFM-U from 2012

Item-No.

	Item-No.
6 Ø 170 mm / 6.7"; for base edge	1043092

\* 2 diamonds are required.

**DRESSING DIAMONDS** for the side edge

for KSM-F, KFM-US

Item-No.

	Item-No.
6 Ø 25 mm / 1"; for side edge	1006743

**DRESSING DIAMOND** skate sharpening machine SL-2

for SL-2

Item-No.

	Item-No.
8 dressing diamond SL-2	750312

**STARTER KIT EDGE SANDING PLATE** for DTS-U II, DTS-II

Set consisting of two stable mounting discs and two "Edge Sanding Plates" inclusive required screws for efficient side edge pre-grinding.

for DTS II, DTS-U II

Item-No.

	Item-No.
Starter Kit Edge Sanding Plate	1075503

**EDGE SANDING PLATE**

Revolutionary grinding disc which simultaneously takes off the side wall and removes rust during side edge grinding. This eliminates time-consuming, manual preparatory work.

for DTS II, DTS-U II\*

Item-No.

	Item-No.
Ø 154 x 2 mm / Ø 6.1" x 0.08"	1072238

\* 2 discs are required for one machine.





## CERAMIC GRINDING DISCS for the side edge

**white:** delivery quality.

for DTS II, DTS-U II, DTS-U Pro,  
SF-1, SF-2 Pro, SF-3, SF-4\*

	Item-No.
1 Ø 154 x 25 mm / Ø 6.1" x 1.0", white	1023989

\* 2 discs are required for one machine.

## CERAMIC GRINDING DISCS for the side edge

**grey:** for rental skis. Minimal removal, maximum service life.  
**anthracite:** high removal and prolonged service life.

for DTS II, DTS-U II, DTS-U Pro,  
SF-1, SF-2 Pro, SF-3, SF-4\*

	Item-No.
2 Ø 154 x 25 mm / Ø 6.1" x 1.0", grey	1016293
3 Ø 154 x 25 mm / Ø 6.1" x 1.0", anthracite	1049942

\* 2 discs are required for one machine.



## CLEANING KIT FOR LASER

Regular cleaning ensures long-lasting value retention and optimal cutting results. Set consisting of: 1 bottle of cleaning solution (125 ml / 4.2 oz), 1 packet of lens cleaning cloths and 1 packet of cotton swabs.

	Item-No.
Cleaning kit for LS-1 RACE	1075524



## GRINDING DISCS SL-2

Grain 80 Universal

	Item-No.
Ø 200 x 6 x 51 mm / Ø 7.9" x 0.2" x 2.0"	400934

Grain 100

	Item-No.
Ø 200 x 6 x 51 mm / Ø 7.9" x 0.2" x 2.0"	1011271



## REPLACEMENT BRUSHES SKI BOOT CLEANER

Spare brushes for the Reichmann ski and snowboard shoe cleaner. Required: 2 x brush belt, 8 x scrubbers.

for ski boot cleaner

	Item-No.
brush belt, 1120 x 90 x 10 mm / 3'8" x 3.5" x 0.4"	1013575
scrubber	1013580



## REPLACEMENT FILTER FOR LS-1 RACE

	Item-No.
1 replacement filter - prefilter	1077392
2 replacement filter - Hepa filter	1077393
activated carbon replacement set	1077394
activated carbon pad	1077395
protection kit for filter change	1077396



### WORKSHOP APRON

High-quality workshop apron, specially developed for the requirements of the service workshop. Spacious chest pocket and adjustable neck strap. Water repellent cotton material.

	Item-No.
workshop apron	1077101



### REICHMANN POLO SHIRT

Anthracite colored Reichmann polo shirt for your service employees. High wearing comfort and modern cut. Available in different sizes.

	Item-No.
Reichmann polo shirt	1077102



### REICHMANN BEACHFLAG

Reichmann Beachflag including frame, bag and base plate. Total height 2.7 m / 8'10".

	Item-No.
beachflag Reichmann	1077103
individual design	1077122



### "WHY SKI SERVICE" POSTER

DIN A0 (2'9" x 3'11") poster for your sports shop or ski rental.

	Item-No.
ski service poster	1077104



### SKI PRESENTATION STAND

High-quality presentation stand for skis to demonstrate your ski service results. Sturdy steel construction for a secure hold.

	Item-No.
ski presentation stand	1075510



### REICHMANN ROLL-UP BANNER

Reichmann roll-up image banner with feet and storage bag. Available with individual design.

	Item-No.
customized roll-up banner	1077105

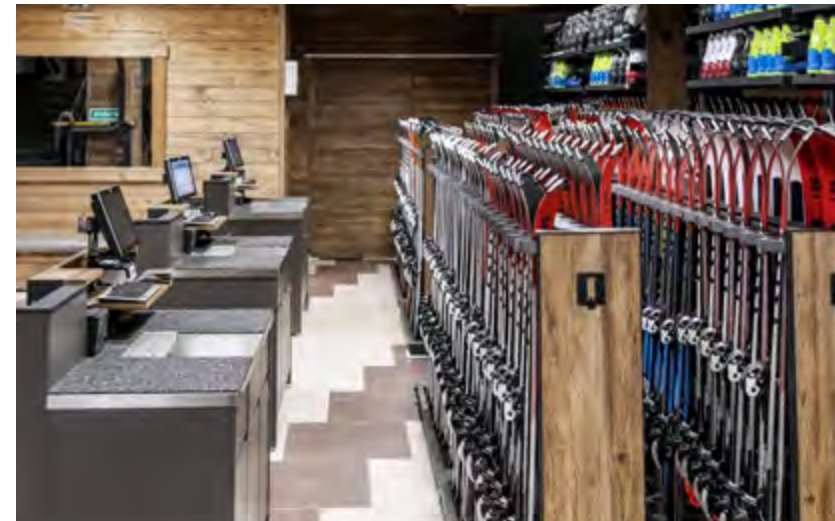
# RENT & DEPOT PROJECTS

## Holistic and individual project solutions

Together with you, we develop a concept that is optimally tailored to your requirements. We advise you on the use of space, planning and implementation and ensure optimal operation in your company. Just contact us!

## Simple design, diversity and high quality

With our flexible RENT & DEPOT SYSTEMS, you can safely store and dry all ski and snowboard equipment. The depot cabinets are equipped with modern locking systems and can be controlled with intelligent software. All systems can be easily adapted to your needs.









# RENT & DEPOT PROJECTS

## Individual 2D and 3D plannings

Upon request, we will gladly prepare a customized 2D plan of your sports shop, ski rental center or ski depot. The plans are intended for illustration purposes and give you the opportunity to select the right amount and type of products to make the most of your space.

After selecting the appropriate equipment variant for you, we will provide you with a professional 3D rendering to visually illustrate your planned Rent or Depot project.

We look forward to assisting you with our experience in your project!



# RENT & DEPOT SYSTEMS



On casters, smooth-running rails, wheels, height-adjustable feet or wall-mountable

Modular & easy to adapt to specific needs

Best quality & reduced, modern design

Maximum capacity at optimal space utilization

Safe storage & optimal drying

## SMOOTH-RUNNING RAIL SYSTEM

With the intelligent smooth-running rail system, you can arrange a large number of racks next to each other to save space. The racks can be moved easily on the handle - so you have access to the stored equipment at any time.

### RAIL

Item-No.	Material strength
1055280	2 mm / 0.08'' <sup>1</sup>
1054915	3 mm / 0.1'' <sup>2</sup>

### RAIL-CONNECTION

Item-No.

1054898

### RAIL-END

Item-No.

1054897

<sup>1</sup> for racks up to 2000 mm / 6'7" length

<sup>2</sup> for racks from 2400 mm / 7'10" length

The 90 degree angle of the rail makes it easy to drop dirt and allows for easy shifting





Long service life thanks to powder-coated and hot-dip galvanized steel

Color customizable

Different front panel versions available

## FLEXIBLE CASTERS OR SPACE-SAVING WALL MOUNTING

As an alternative to the rail system, the storage systems can be supplied with mobile casters, height-adjustable feet or as a single-sided rack for mounting on the wall.

Just contact us and we will find the optimal solution for you!





# DESIGN VARIANTS

Choose between four different front panel variants



## Standard

The standard line has a narrow, plain anthracite-colored front. With its simple design it fits into every room.



## Mini Panel

The Mini Panel variant convinces with an elegant white front panel and a robust anthracite-coated steel handle.



## Full Panel

The wide front of the Full Panel version can be dyed in all RAL colors or stuck with your desired foil. Choose between the high-quality stainless steel handle or the anthracite-coated steel handle.



## UniQ

With the precious UniQ version, you get a high quality wooden front, which gives your rental shop a unique flair. Customize your storage systems with different wood variants individually to your expectations.





# EASY

## The uncomplicated and universal storage system

The EASY line delivers exactly what its name promises. It offers great versatility and is therefore the right solution for different capacities and requirements. The aluminum crossbars ensure a secure hold of the skis and snowboards by simply putting them into the rack. You can easily move the rack without any effort because of the weight reduction.

The height-adjustable crossbars provide a firm grip for all ski or board lengths and shapes - from children's ski to longboard.

## EASY BASIC RACK



extra agile lightweight casters  
for easy transport

The two manoeuvrable lightweight casters allow an easy transport.

Length x Width x Height	Capacity*	Item-No. Standard
600 x 500 x 1400 mm / 1'12" x 1'8" x 4'7"	8	1055565
1000 x 500 x 1400 mm / 3'3" x 1'8" x 4'7"	16	1054881
1250 x 500 x 1400 mm / 4'1" x 1'8" x 4'7"	20	1055212
1500 x 500 x 1400 mm / 4'11" x 1'8" x 4'7"	24	1055566

\* Ski pairs (based on the average width of slalom carving skis).



## EASY RACK



height-adjustable crossbars  
for different ski and  
board lengths and shapes

skis are fixed only by placing  
them into the rack



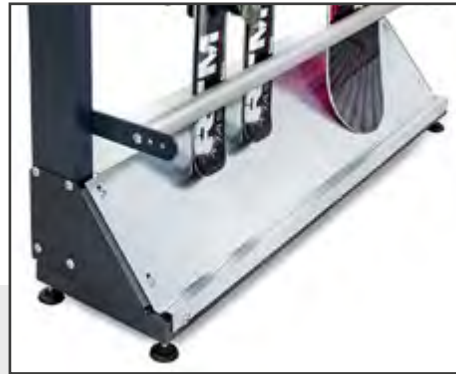
A solid companion for rental companies, ski service stations and hotels suitable for all types and lengths of skis and snowboards.

Length x Width x Height	Capacity*	Item-No. Mini Panel	Item-No. Full Panel
1500 x 500 x 1400 mm / 4'11" x 1'8" x 4'7"	24	1055191	1069571
1800 x 500 x 1400 mm / 5'11" x 1'8" x 4'7"	30	1055550	1069572
2000 x 500 x 1400 mm / 6'7" x 1'8" x 4'7"	32	1055551	1069573
2400 x 500 x 1400 mm / 7'10" x 1'8" x 4'7"	40	1055552	1069574
3000 x 500 x 1400 mm / 9'10" x 1'8" x 4'7"	50	1063514	1069575
4000 x 500 x 1400 mm / 13'1" x 1'8" x 4'7"	64	1069457	1069576

\* Ski pairs (based on the average width  
of slalom carving skis).



## SINGLE-SIDED EASY RACK



height-adjustable feet  
guarantee a safe stand  
even on uneven ground

One-sided, easy to mount on the wall and suitable for every room due to the height-adjustable feet.

Length x Width x Height	Capacity*	Item-No. Standard
1000 x 400 x 1400 mm / 3'3" x 1'4" x 4'5"	8	1074939
1250 x 400 x 1400 mm / 4'1" x 1'4" x 4'5"	10	1055572
1500 x 400 x 1400 mm / 4'11" x 1'4" x 4'5"	12	1055573
1800 x 400 x 1400 mm / 5'11" x 1'4" x 4'5"	15	1055574

\* Ski pairs (based on the average width of slalom carving skis).

## EASY PLUS RACK



additional storage space through special shelves  
for children's ski boots and helmets

Probably the most commonly used combination of ski and snowboard storage at the bottom and storage area for children's ski boots or helmets above.

Length x Width x Height	Capacity*	Item-No. Mini Panel	Item-No. Full Panel
1500 x 500 x 2420 mm / 4'11" x 1'8" x 7'11"	24+15/18	1054883	1069578
1800 x 500 x 2420 mm / 5'11" x 1'8" x 7'11"	30+18/21	1055547	1069582
2000 x 500 x 2420 mm / 6'7" x 1'8" x 7'11"	32+21/24	1055548	1063720
2400 x 500 x 2420 mm / 7'10" x 1'8" x 7'11"	40+24/30	1054884	1069579
3000 x 500 x 2420 mm / 9'10" x 1'8" x 7'11"	50+30/39	1063532	1069580
4000 x 500 x 2420 mm / 13'1" x 1'8" x 7'11"	64+42/48	1069459	1069581

\* Ski pairs + pairs of junior boots / helmets



## EASY BASIC OUTDOOR RACK

## EASY OUTDOOR RACK



height-adjustable crossbars  
for different ski and  
board lengths and shapes



Extra big pneumatic tires  
for safe transport even on  
uneven ground

Sturdy steel frame for  
extra strong hold

The outdoor racks with large pneumatic tires are ideal for the safe transport of skis and snowboards on uneven ground in the outdoor area.

Length x Width x Height	Capacity*	Item-No. Standard
1000 x 670 x 1390 mm / 3'3" x 2'2" x 4'7"	16	1060060
1250 x 670 x 1390 mm / 4'1" x 2'2" x 4'7"	20	1064271
1500 x 670 x 1390 mm / 4'11" x 2'2" x 4'7"	24	1071588
2000 x 670 x 1390 mm / 6'7" x 2'2" x 4'7"	32	1064747

Length x Width x Height	Capacity*	Item-No. Mini Panel
1400 x 700 x 1450 mm / 4'7" x 2'4" x 4'9"	16/4	1071589
1650 x 700 x 1450 mm / 5'5" x 2'4" x 4'9"	20/6	1071590

\* Ski pairs (based on the average width of slalom carving skis) / Snowboards.

\* Ski pairs (based on the average width of slalom carving skis).



# TOP

The award-winning storage solution

The new TOP RACK features the innovative CliQ handle system, which won the ISPO Award 2019.

This system combines three special features:  
Exceptionally fast input and removal of the skis with just one hand, firm fixation of the skis in the clever CliQ grip system as well as the appealing presentation and space-saving storage by the arrangement in the 22° angle.

The specially developed CliQ holders with extra robust, automatic open-close mechanism ensure a firm hold of skis of different widths and lengths.

## TOP RACK



excellent CliQ grip system

stable and easy fixation of skis  
thanks to intelligent open-close  
mechanism

With the innovative handle system - the CliQ - skis are easily and securely fixed in pairs in the storage system. The bottom of the rack includes a water tub and a rubber mat.

Length x Width x Height	Capacity*	Item-No. Mini Panel	Item-No. Full Panel
1500 x 450 x 1400 mm / 4'11" x 1'6" x 4'7"	19	1055596	1069660
1800 x 450 x 1400 mm / 5'11" x 1'6" x 4'7"	24	1055597	1069661
2000 x 450 x 1400 mm / 6'7" x 1'6" x 4'7"	27	1055598	1069662
2400 x 450 x 1400 mm / 7'10" x 1'6" x 4'7"	33	1055599	1069663
3000 x 450 x 1400 mm / 9'11" x 1'6" x 4'7"	42	1063516	1069664
4000 x 450 x 1400 mm / 13'1" x 1'6" x 4'7"	54	1069461	1069665

\* Ski pairs (based on the average width of slalom carving skis).





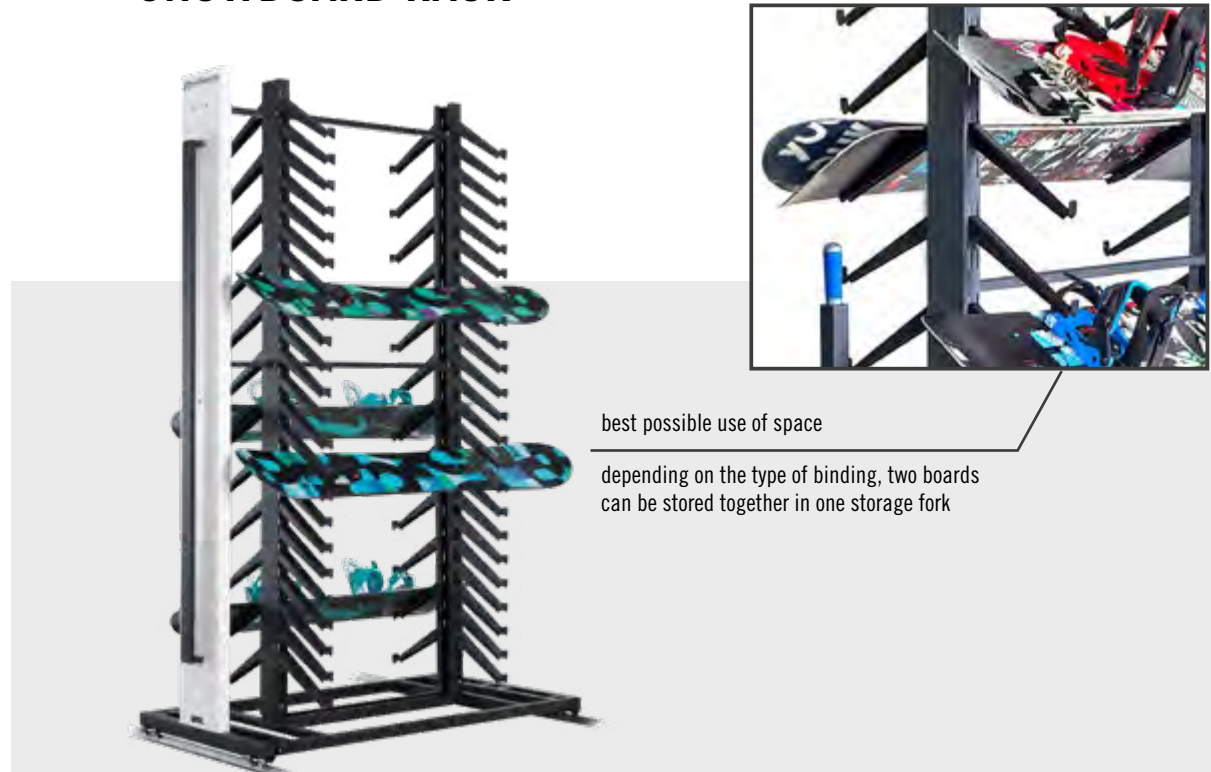
# SNOWBOARD

The storage system specifically for snowboards

The SNOWBOARD line concentrates on the needs of storing rental and customer snowboards. Thereby you have the opportunity to choose between the SNOWBOARD RACK with rubber-coated shelves to insert the boards or the SNOWBOARD RENTAL RACK with the opportunity to display your boards and store the bindings in a separate basket.

In the SNOWBOARD RACK you can insert up to two boards on the base side (depending on the binding) on one shelf – so the capacity can vary. The rack with a length of 2400 mm / 7'10" offers the opportunity to include forks for poles to use the space the best possible way.

## SNOWBOARD RACK



Presentation and secure storage combined - direct access without wasting time and slipping. No removal of the binding necessary.

Length x Width x Height	Capacity*	Item-No. Mini Panel	Item-No. Full Panel
1500 x 800 x 2420 mm / 4'11" x 2'7" x 7'11"	25/50	1052867	1069606
1800 x 800 x 2420 mm / 5'11" x 2'7" x 7'11"	25/50	1055569	1069607
2000 x 800 x 2420 mm / 6'7" x 2'7" x 7'11"	25/50	1055570	1069608
2400 x 800 x 2420 mm / 7'10" x 2'7" x 7'11"	25/50	1055571	1069609
3000 x 800 x 2420 mm / 9'10" x 2'7" x 7'11"	50/100	1063539	1069610
4000 x 800 x 2420 mm / 13'1" x 2'7" x 7'11"	50/100	1069467	1069611

\* Snowboards (with classic bindings / rental bindings).



## SNOWBOARD RENTAL RACK



Easy insertion for a secure and clear storage of a large number of rental and customer boards. Separate storage of bindings in the basket.

Length x Width x Height	Capacity*	Item-No. Mini Panel	Item-No. Full Panel
1500 x 800 x 2420 mm / 4'11" x 2'7" x 7'11"	60	1055588	1069600
1800 x 800 x 2420 mm / 5'11" x 2'7" x 7'11"	80	1055589	1069601
2000 x 800 x 2420 mm / 6'7" x 2'7" x 7'11"	80	1055590	1069602
2400 x 800 x 2420 mm / 7'10" x 2'7" x 7'11"	100	1055591	1069603
3000 x 800 x 2420 mm / 9'10" x 2'7" x 7'11"	120	1063537	1069604
4000 x 800 x 2420 mm / 13'1" x 2'7" x 7'11"	160	1069468	1069605

\* Snowboards (with bindings in the basket)



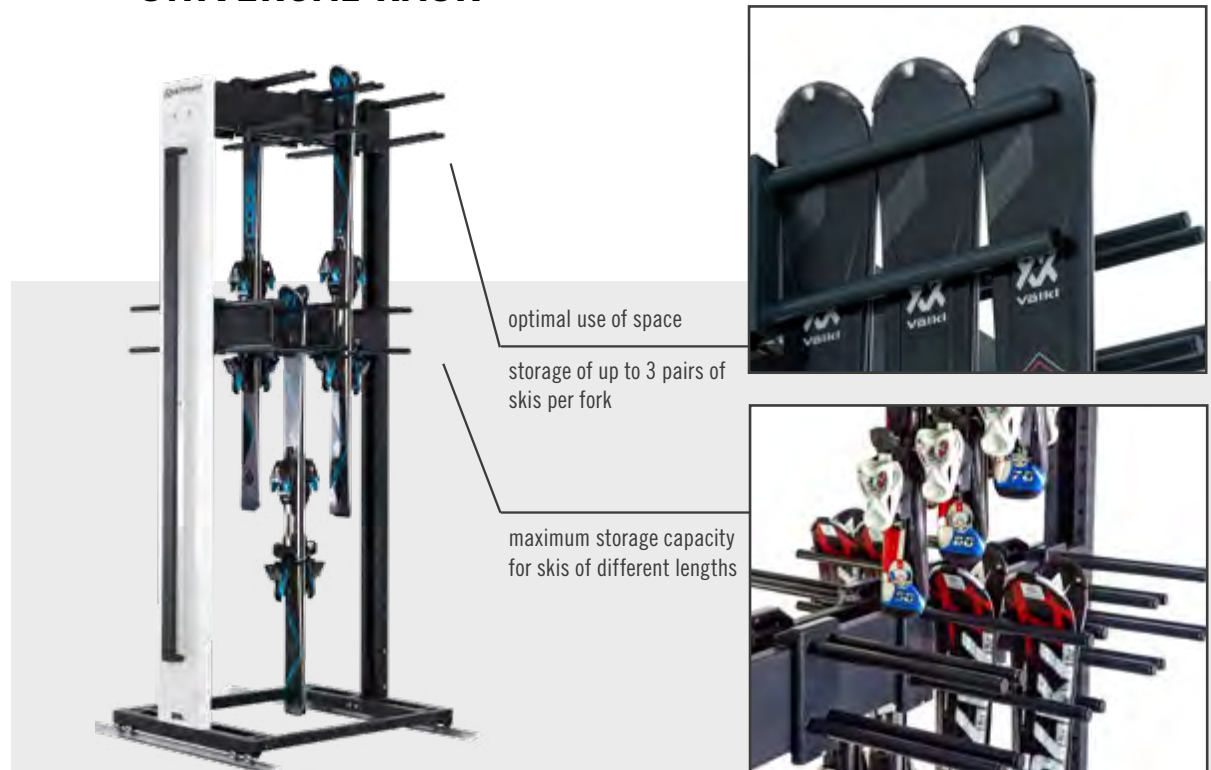
# UNIVERSAL

The storage system for different needs

Whether children's, giant slalom skis or poles, you will find a space saving and secure storage solution in the UNIVERSAL line. The rubber-coated forks can be placed wherever you like and adjusted to your needs. The special construction of the forks allows you to store a maximum amount of skis and poles in a minimum amount of space. The height-adjustable crossbars enable easy storage of all lengths and forms.

We also offer a solution for the summer – you can easily change the ski forks to bike forks.

## UNIVERSAL RACK



The rubber-coated forks offer space for 2 to 3 pairs of skis per fork, whereby the forks can be moved into any position to adapt to your needs in terms of functionality and capacity.

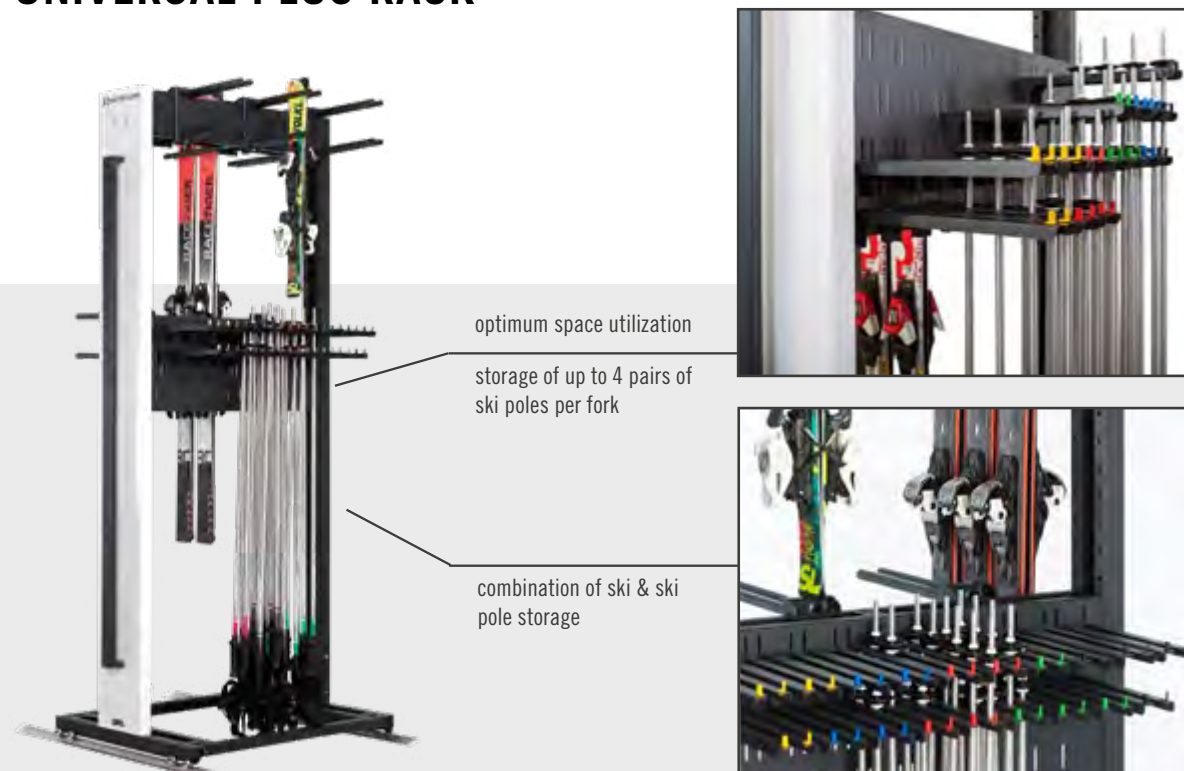
Length x Width x Height	Capacity*	Item-No. Mini Panel	Item-No. Full Panel
1500 x 800 x 2420 mm / 4'11" x 2'7" x 7'11"	60	1055210 <sup>1</sup>	1069583 <sup>1</sup>
1800 x 800 x 2420 mm / 5'11" x 2'7" x 7'11"	72	1055560 <sup>2</sup>	1069584 <sup>2</sup>
2000 x 800 x 2420 mm / 6'7" x 2'7" x 7'11"	84	1055559 <sup>3</sup>	1063721 <sup>3</sup>
2400 x 800 x 2420 mm / 7'10" x 2'7" x 7'11"	108	1054914 <sup>4</sup>	1063312 <sup>4</sup>
3000 x 800 x 2420 mm / 9'10" x 2'7" x 7'11"	132	1063535 <sup>5</sup>	1063511 <sup>5</sup>
4000 x 800 x 2420 mm / 13'1" x 2'7" x 7'11"	168	1069464 <sup>6</sup>	1069586 <sup>6</sup>

\* Ski pairs (based on the average width of slalom carving skis).

- 1) inclusively 20 ski forks
- 2) inclusively 24 ski forks
- 3) inclusively 28 ski forks
- 4) inclusively 36 ski forks
- 5) inclusively 44 ski forks
- 6) inclusively 56 ski forks



## UNIVERSAL PLUS RACK



Due to the special design, the forks allow a capacity of up to four pairs of ski poles per fork - so you can safely store a large number of poles in the smallest space.

Length x Width x Height	Capacity*	Item-No. Mini Panel	Item-No. Full Panel
1500 x 800 x 2420 mm / 4'11" x 2'7" x 7'11"	45+124**	1055600 <sup>1</sup>	1069587 <sup>1</sup>
1800 x 800 x 2420 mm / 5'11" x 2'7" x 7'11"	54+156**	1055601 <sup>2</sup>	1069588 <sup>2</sup>
2000 x 800 x 2420 mm / 6'7" x 2'7" x 7'11"	63+172**	1055602 <sup>3</sup>	1069589 <sup>3</sup>
2400 x 800 x 2420 mm / 7'10" x 2'7" x 7'11"	81+212**	1055603 <sup>4</sup>	1069590 <sup>4</sup>
3000 x 800 x 2420 mm / 9'10" x 2'7" x 7'11"	99+268**	1063531 <sup>5</sup>	1069591 <sup>5</sup>
4000 x 800 x 2420 mm / 13'1" x 2'7" x 7'11"	126+344**	1069465 <sup>6</sup>	1069592 <sup>6</sup>

\* Pairs of ski + pairs of ski poles (based on the average width of slalom carving ski).

\*\*Assumed, that 1/4 of the rack will be used for ski pole storage.

1) inclusively 15 ski + 31 ski pole forks

2) inclusively 18 ski + 39 ski pole forks

3) inclusively 21 ski + 43 ski pole forks

4) inclusively 27 ski + 53 ski pole forks

5) inclusively 33 ski + 67 ski pole forks

6) inclusively 42 ski + 86 ski pole forks



## UNIVERSAL SNOWBOARD RACK



ski and ski pole storage on one side, snowboards on the other side

storage basket for bindings



## FURTHER ACCESSORIES FOR THE UNIVERSAL LINE

To add variable capacity to your rack, you can order additional forks to get the most out of your space.

### SKI FORK

Item-No.

1054899

### SNOWBOARD FORK

Item-No.

1056072

### BIKE FORK

Item-No.

1055806

The space-saving combination of snowboard presentation with basket for bindings and ski or ski pole storage on the other side.

Length x Width x Height	Capacity*	Item-No. Mini Panel	Item-No. Full Panel
1500 x 800 x 2420 mm / 4'11" x 2'7" x 7'11"	15/30/124	1054885 <sup>1</sup>	1069593 <sup>1</sup>
1800 x 800 x 2420 mm / 5'11" x 2'7" x 7'11"	18/40/156	1055567 <sup>2</sup>	1069594 <sup>2</sup>
2000 x 800 x 2420 mm / 6'7" x 2'7" x 7'11"	21/40/168	1055568 <sup>3</sup>	1069595 <sup>3</sup>
2400 x 800 x 2420 mm / 7'10" x 2'7" x 7'11"	27/50/200	1054886 <sup>4</sup>	1069596 <sup>4</sup>
3000 x 800 x 2420 mm / 9'10" x 2'7" x 7'11"	33/60/244	1069451 <sup>5</sup>	1069597 <sup>5</sup>
4000 x 800 x 2420 mm / 13'1" x 2'7" x 7'11"	42/80/336	1069480 <sup>6</sup>	1069598 <sup>6</sup>

\* inclusively pair of ski + snowboard and pair of ski poles

- 1) inclusively 5 ski + 31 ski pole forks
- 2) inclusively 6 ski + 39 ski pole forks
- 3) inclusively 7 ski + 42 ski pole forks
- 4) inclusively 9 ski + 50 ski pole forks
- 5) inclusively 11 ski + 61 ski pole forks
- 6) inclusively 14 ski + 84 ski pole forks







# BIKE

The innovative storage line for bikes

Equip your rental business optimally for the summer business: With the racks of the BIKE series you can store a maximum number of bicycles in the smallest space.

The unique construction allows the vertical storage of the bikes on both sides of the rack. Special wheel mounts provide the necessary support and fix the bicycles with minimal space requirements. The wheel mounts can be easily adapted to a wide variety of wheel sizes.

## BIKE RACK



special wheel mounts

for a safe and firm grip of the bikes



The vertical storage allows you to store a large number of wheels safely and space-saving. Special wheel mounts provide a firm grip.

Length x Width x Height	Capacity*	Item-No. Standard
1000 x 1250 x 1700 mm / 3'3" x 4'1" x 5'7"	4	1074195
1500 x 1250 x 1700 mm / 4'11" x 4'1" x 5'7"	7	1072386
1800 x 1250 x 1700 mm / 5'11" x 4'1" x 5'7"	8	1074854
2000 x 1250 x 1700 mm / 6'7" x 4'1" x 5'7"	9	1072387
2400 x 1250 x 1700 mm / 7'10" x 4'1" x 5'7"	12	1072967

\* Bikes

## BIKE PLUS RACK



extra storage space for helmets

vertical storage of bikes with minimum distance



The BIKE PLUS RACK offers an additional space for helmets in the upper part of the rack.

Length x Width x Height	Capacity*	Item-No. Standard
1500 x 1250 x 2420 mm / 4'11" x 4'1" x 7'11"	7+18	1074855
1800 x 1250 x 2420 mm / 5'11" x 4'1" x 7'11"	8+21	1074856
2000 x 1250 x 2420 mm / 6'7" x 4'1" x 7'11"	9+24	1074857
2400 x 1250 x 2420 mm / 7'10" x 4'1" x 7'11"	12+30	1074858

\* Bikes + Helmets



# WALL LEVELS

Space-saving storage  
on the wall

With these practical storage solutions you save valuable floor space in your shop.

The WALL LEVELS can be easily mounted on the wall. Choose between a WALL LEVEL for skis, poles or snowboards.

The WALL CLIQ HOLDER also features the brand-new, innovative CliQ grip system for extra strong hold and ease of use.

## WALL CLIQ HOLDER



In the practical WALL CLIQ HOLDER with innovative CliQ grip system, you can store skis and poles of different lengths in a particularly safe and space-saving manner. The automatic open-close mechanism allows easy ski input with just one hand.

Width x Depth	Capacity*	Item-No.
1000 x 200 mm / 3'3" x 8"	6	1076474
1250 x 200 mm / 4'1" x 8"	8	1076475
1500 x 200 mm / 4'11" x 8"	10	1076476
1800 x 200 mm / 5'11" x 8"	12	1076477
2000 x 200 mm / 6'7" x 8"	14	1076478

\* Ski pairs



## WALL LEVEL SKIS



## WALL LEVEL POLES



## WALL LEVEL SNOWBOARD



The space-saving wall mounts store skis, poles or snowboards optimally and safely.

Width x Depth	Cap.*	Item-No.
1000 x 400 mm / 3'3" x 1'4"	9	1074930
1250 x 400 mm / 4'1" x 1'4"	12	1077640
1500 x 400 mm / 4'11" x 1'4"	15	1074931
1800 x 400 mm / 5'11" x 1'4"	18	1074932
2000 x 400 mm / 6'7" x 1'4"	21	1074933

\* Ski pairs

Width x Depth	Cap.*	Item-No.
1000 x 400 mm / 3'3" x 1'4"	76	1074934
1250 x 400 mm / 4'1" x 1'4"	100	1077639
1500 x 400 mm / 4'11" x 1'4"	124	1074935
1800 x 400 mm / 5'11" x 1'4"	156	1074936
2000 x 400 mm / 6'7" x 1'4"	172	1074937

\* Pairs of poles

Height x Depth	Cap.*	Item-No.
1000 x 400 mm / 3'3" x 1'4"	5 / 10	1077745
2300 x 400 mm / 7'7" x 1'4"	12 / 24	1074938

\* Snowboards (with classical / rental bindings)



# BOOT & HELMET STORAGE & DRYING

Space saving and appealing storage and drying

These storage and drying options impress due to their simple and timeless design as well as their well-thought-out construction and best functionality. The individual height adjustability allows the safe storage of a large number of ski or snowboard boots in up to 13 shelves. Helmets can be safely stored in the HELMET RACK.

With our selection of boot dryers, everyone will find the right one - whether on the wall, on rails or equipped with a disinfection system.

## HELMET RACK



arrangement in 88° angle

no slipping or falling out of the helmets during transport

Due to the height adjustability of the shelves the HELMET RACK is customizable to your needs.

Length x Width x Height	Capacity*	Item-No. Mini Panel	Item-No. Full Panel
1500 x 500 x 2420 mm / 4'11" x 1'8" x 7'11"	90	1069774	1071519
1800 x 500 x 2420 mm / 5'11" x 1'8" x 7'11"	105	1069775	1071520
2000 x 500 x 2420 mm / 6'7" x 1'8" x 7'11"	120	1069776	1071521
2400 x 500 x 2420 mm / 7'10" x 1'8" x 7'11"	150	1071540	1063316
3000 x 500 x 2420 mm / 9'10" x 1'8" x 7'11"	195	1069777	1071522
4000 x 500 x 2420 mm / 13'1" x 1'8" x 7'11"	240	1069778	1071523

\* Helmets (with 15 shelves)



## BOOT RACK



arrangement of the boots in 88° angle

no slipping or falling out of the boots during transport

option: Upgrade to SKATE RACK \*\*

pads with anti-slip surface make skates safe to store



Due to the height adjustment, the rack is easily customizable to your needs with 11 to 13 shelves. Also suitable for storing skates with special pads.

Length x Width x Height	Capacity*	Item-No. Mini Panel 11	Item-No. additional shelf	Item-No. Full Panel 11
1500 x 550 x 2420 mm / 4'11" x 1'10" x 7'11"	55/65	1054887	1069614	1069566
1800 x 550 x 2420 mm / 5'11" x 1'10" x 7'11"	66/78	1055542	1069615	1069567
2000 x 550 x 2420 mm / 6'7" x 1'10" x 7'11"	77/91	1055543	1069616	1069568
2400 x 550 x 2420 mm / 7'10" x 1'10" x 7'11"	88/104	1054888	1069617	1069569
3000 x 550 x 2420 mm / 9'10" x 1'10" x 7'11"	110/130	1069452	1069618	1069570
4000 x 550 x 2420 mm / 13'1" x 1'10" x 7'11"	154/182	1069454	1069619	1069564

\* with 11/13 shelves  
\*\* SKATE RACK available on request



## SHELF BOOT DRYER



efficient combination of boot storage and drying



individual control

programmable heating times and temperature on the screen panel

integrated heating system

hot air or room air flows through nozzles from above into the boots



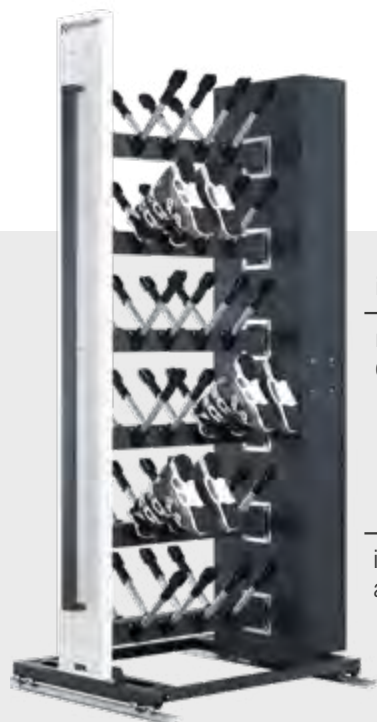
By putting the boots into the SHELF BOOT DRYER, they can be dried via hot air from the top (optionally also indoor air) and at the same time be stored securely. 9 out of 11 (or 11 out of 13) shelves are equipped with heating nozzles.

Length x Width x Height	Capacity 11*	Mini Panel indoor air 11	Mini Panel hot air 11	Full Panel indoor air 11	Full Panel hot air 11	Capacity 13**	Mini Panel indoor air 13	Mini Panel hot air 13	Full Panel indoor air 13	Full Panel hot air 13	Volt, Power C indoor air (EU / US)	Volt, Power C hot air (EU / US)
1500 x 500 x 2420 mm / 4'11" x 1'8" x 7'11"	54	1069622	1058629	1071524	1069784	64	1069648	1069642	1069821	1069815	1 x 230 V, 480 W / 1x 115 V, 500 W	3 x 400 V, 4980 W / 1 x 208 V, 3300 W
1800 x 500 x 2420 mm / 5'11" x 1'8" x 7'11"	65	1069623	1058630	1071525	1069785	77	1069649	1069643	1069822	1069816	1 x 230 V, 480 W / 1x 115 V, 500 W	3 x 400 V, 4980 W / 1 x 208 V, 3300 W
2000 x 500 x 2420 mm / 6'7" x 1'8" x 7'11"	76	1069624	1058631	1071526	1069786	90	1069650	1069644	1069823	1069817	1 x 230 V, 480 W / 1x 115 V, 500 W	3 x 400 V, 4980 W / 1 x 208 V, 3300 W
2400 x 500 x 2420 mm / 7'10" x 1'8" x 7'11"	87	1069625	1059638	1071527	1069787	103	1069651	1069645	1069824	1069818	1 x 230 V, 480 W / 1x 115 V, 500 W	3 x 400 V, 4980 W / 1 x 208 V, 3300 W
3000 x 500 x 2420 mm / 9'10" x 1'8" x 7'11"	109	1069626	1063513	1071528	1069788	129	1069652	1069646	1069825	1069819	1 x 230 V, 480 W / 1x 115 V, 500 W	3 x 400 V, 4980 W / 1 x 208 V, 3300 W
4000 x 500 x 2420 mm / 13'1" x 1'8" x 7'11"	152	1069627	1069466	1071529	1069789	180	1069653	1069647	1069826	1069820	2 x 230 V, 480 W / 2 x 115 V, 500 W	2 x 3 x 400 V, 4980 W / 2 x 208 V, 3300 W

\* Boot pairs with 11 shelves \*\* Boot pairs with 13 shelves



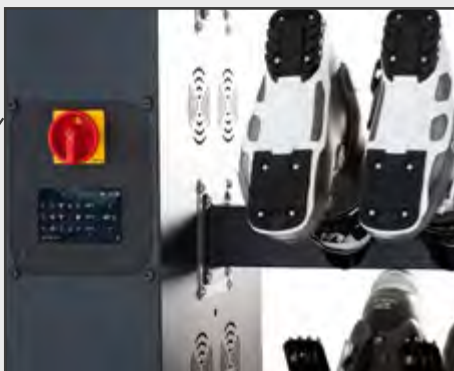
## BOOT DRYER



intelligent drying system

nozzles open only when a boot is on the tube

individual control of the heating aggregate on the screen panel



With a few buttons, you can individually set the temperature, degree of drying, time and disinfection for each level.

Length x Width x Height	Cap.*	Mini Panel	Mini Panel Disinfect	Full Panel	Full Panel Disinfect	Volt, Power C. indoor air EU	Volt, Power C. hot air EU
1500 x 800 x 2250 mm / 4'11" x 2'7" x 7'5"	48	1054889	1060817	1071530	1071534	1 x 230 V, 260 W	3 x 400 V, 5680 W
1800 x 800 x 2250 mm / 5'11" x 2'7" x 7'5"	60	1055544	1060818	1071531	1071535	1 x 230 V, 260 W	3 x 400 V, 5680 W
2000 x 800 x 2250 mm / 6'7" x 2'7" x 7'5"	72	1055545	1060819	1063729	1071536	1 x 230 V, 510 W	3 x 400 V, 7730 W
2400 x 800 x 2250 mm / 7'10" x 2'7" x 7'5"	84	1054890	1060820	1063319	1071537	1 x 230 V, 510 W	3 x 400 V, 7730 W
3000 x 800 x 2250 mm / 9'10" x 2'7" x 7'5"	108	1063512	1069612	1071532	1071538	1 x 230 V, 510 W	3 x 400 V, 7730 W
4000 x 800 x 2250 mm / 13'1" x 2'7" x 7'5"	144	1069456	1069613	1071533	1071539	2 x 230 V, 2 x 510 W	2 x 3 x 400 V, 2 x 7730 W

\* Boot pairs



## SLIM BOOT DRYER



High drying efficiency in the smallest of spaces - this is what the brand new SLIM BOOT DRYER offers. The horizontal arrangement of the drying tubes allows even more boots to be stored and dried in a narrower construction.

Length x Width x Height	Capacity*	Item-No. Mini Panel	Item-No. Full Panel	Volt, Power C. indoor air (EU / US)	Volt, Power C. hot air (EU)
1500 x 500 x 2420 mm / 4'11" x 1'8" x 7'11"	44	1077032	1077037	3 x 400 V, 550 W / 110-120 V, 420 W	3 x 400 V, 7150 W
1800 x 500 x 2420 mm / 5'11" x 1'8" x 7'11"	55	1077033	1077038	3 x 400 V, 550 W / 110-120 V, 420 W	3 x 400 V, 7150 W
2000 x 500 x 2420 mm / 6'7" x 1'8" x 7'11"	66	1077034	1077039	3 x 400 V, 550 W / 110-120 V, 420 W	3 x 400 V, 7150 W
2400 x 500 x 2420 mm / 7'10" x 1'8" x 7'11"	77	1077035	1077040	3 x 400 V, 550 W / 110-120 V, 420 W	3 x 400 V, 7150 W
3000 x 500 x 2420 mm / 9'10" x 1'8" x 7'11"	99	1076199	1077041	3 x 400 V, 550 W / 110-120 V, 420 W	3 x 400 V, 7150 W
4000 x 500 x 2420 mm / 13'1" x 1'8" x 7'11"	132	1077036	1077042	2 x 3 x 400 V, 550 W / 2 x 110-120 V, 420 W	2 x 3 x 400 V, 7150 W

\* Boot pairs





## PANEL BOOT DRYER



Space-saving, wall-mountable boot dryer for 5, 10 or 15 pairs of boots. The dryer is equipped with special energy-saving nozzles that open only when a boot is on the tube.

Length x Width x Height	Capacity*	Item-No.	Volt, Power C. (EU / US)
420 x 410 x 2050 mm / 1'5" x 1'4" x 6'9"	5	1055546	230 V, 1050 W / 110-120 V, 530 W
610 x 410 x 2050 mm / 2' x 1'4" x 6'9"	10	1054891	230 V, 2050 W / 110-120 V, 530 W
900 x 460 x 2100 mm / 2'11" x 1'6" x 6'11"	15	1054892	230 V, 2600 W / 110-120 V, 1300 W

\* Boot pairs

## BOOT DRYER ECO



Space-saving, wall mountable Boot Dryer for 4 or 8 pairs of boots.

Length x Width x Height	Cap.*	Item-No.	Volt, Power C. (EU / US)
300 x 360 x 1480 mm / 1'2" x 1'2" x 4'10"	4	1074196	230 V, 550 W / 110-120 V, 280 W
600 x 360 x 1480 mm / 1'12" x 1'2" x 4'10"	8	1074859	230 V, 1050 W / 110-120 V, 530 W

\* Boot pairs



## DISINFECTION UNIT

Classic



Plus



combined disinfection of  
helmet and boots

Bye bye manual disinfection by hand - The DISINFECTION UNIT allows easy, pairwise boot disinfection and requires little space. With the DISINFECTION PLUS you can also disinfect helmets.

	Length x Depth x Height	Item-No.	Volt, Power C. (EU)	Volt, Power C. (US)
DISINFECTION UNIT	380 x 540 x 900 mm / 1'3" x 1'9" x 2'11"	1057302	230 V, 210 W	115 V, 210 W
DISINFECTION PLUS	550 x 600 x 1320 mm / 1'10" x 2' x 4'4"	1070619	230 V, 210 W	115 V, 210 W



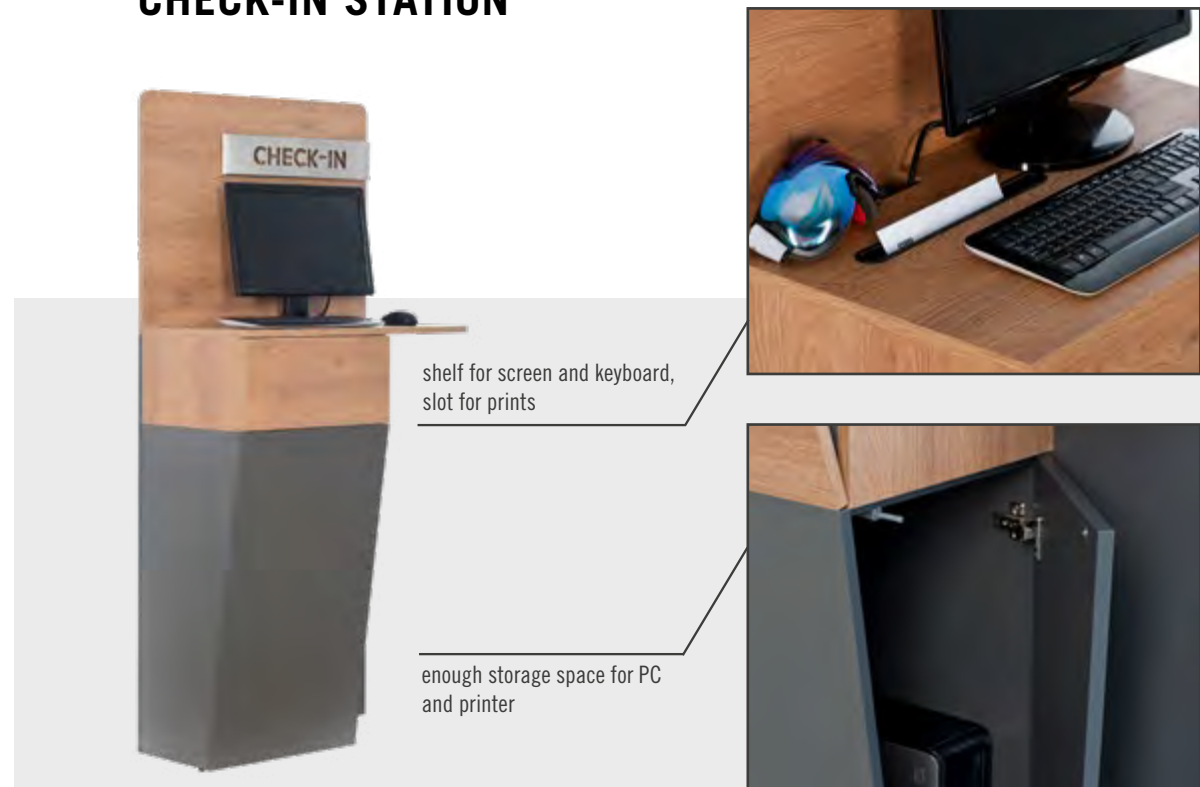
# INTERIOR

From seating facilities to the service desk

In addition to storage systems for winter sports equipment, the appropriate furnishings also belong to the complete equipment of your rental company. Discover our high-quality rental equipment, which ranges from the classic bench to the multifunctional service desk. With our UNIQ design you get furniture with noble wood fronts, which gives your shop a unique ambience.

In addition to a modern design, our rental facilities also provide extremely practical equipment elements for ergonomic work and high comfort. This offers a benefit for both your customers and your service staff.

## CHECK-IN STATION



High quality check-in service station for your rental company. The CHECK-IN STATION provides sufficient storage space for printers and other accessories below the screen tray. Available in different wood variants.

Width x Depth x Height

Item-No.

790 x 420 x 1100/1700 mm / 2'7" x 1'5" x 3'7" / 5'7"

1072892



# CUSTOMER SERVICE DESK UNIQ

UniQ Line



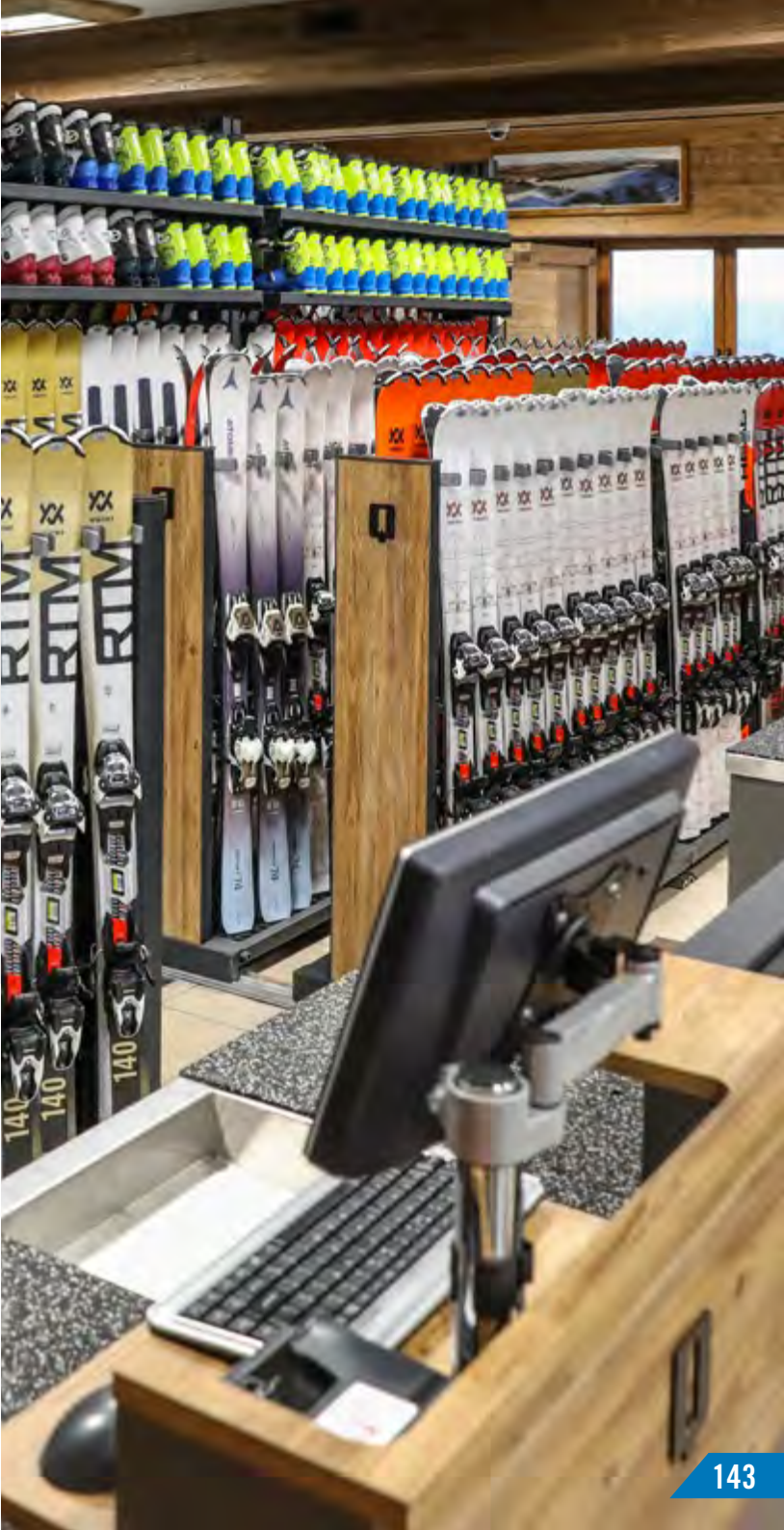
The SERVICE DESK UNIQ is equipped with particularly practical features for maximum comfort. An integrated water drainage basin on the counter collects the running melt water. Numerous shelves and storage compartments provide sufficient storage space.

	Width x Depth x Height	Item-No.
SERVICE DESK UNIQ	1200 x 700 x 850/1100 mm / 3'11" x 2'4" x 2'9"/3'7"	1069779

## MONITOR MOUNT

for Customer Service Desk UniQ

Item-No.	1070134
----------	---------



## CASH DESK

UniQ Line



integrated SKI STAND at the counter for ski storage

High-quality payment station for your rental company. The CASH DESK UNIQ is provided with a smooth, resistant surface with rubber coating.

Width x Depth x Height

Item-No.

1000 x 700 x 850/1100 mm / 3'3" x 2'4" x 2'9"/3'7"

1074192

1200 x 700 x 850/1100 mm / 3'11" x 2'4" x 2'9"/3'7"

1076913

## MONITOR MOUNT

for CASH DESK UNIQ

Item-No.

1070134

## SERVICE DESK 600

UniQ Line



integrated stainless steel basin for drainage of melt water



The SERVICE DESK 600 is an extremely compact service station with practical features for maximum comfort. An integrated water drainage basin on the service counter collects the running melt water.

Width x Depth x Height

Item-No.

SERVICE DESK UNIQ 600

600 x 700 x 850/1100 mm / 2' x 2'4" x 2'9"/3'7"

1074191



## SKI STAND 350

Classic Line

UniQ Line



## SKI STAND 700

Classic Line

UniQ Line



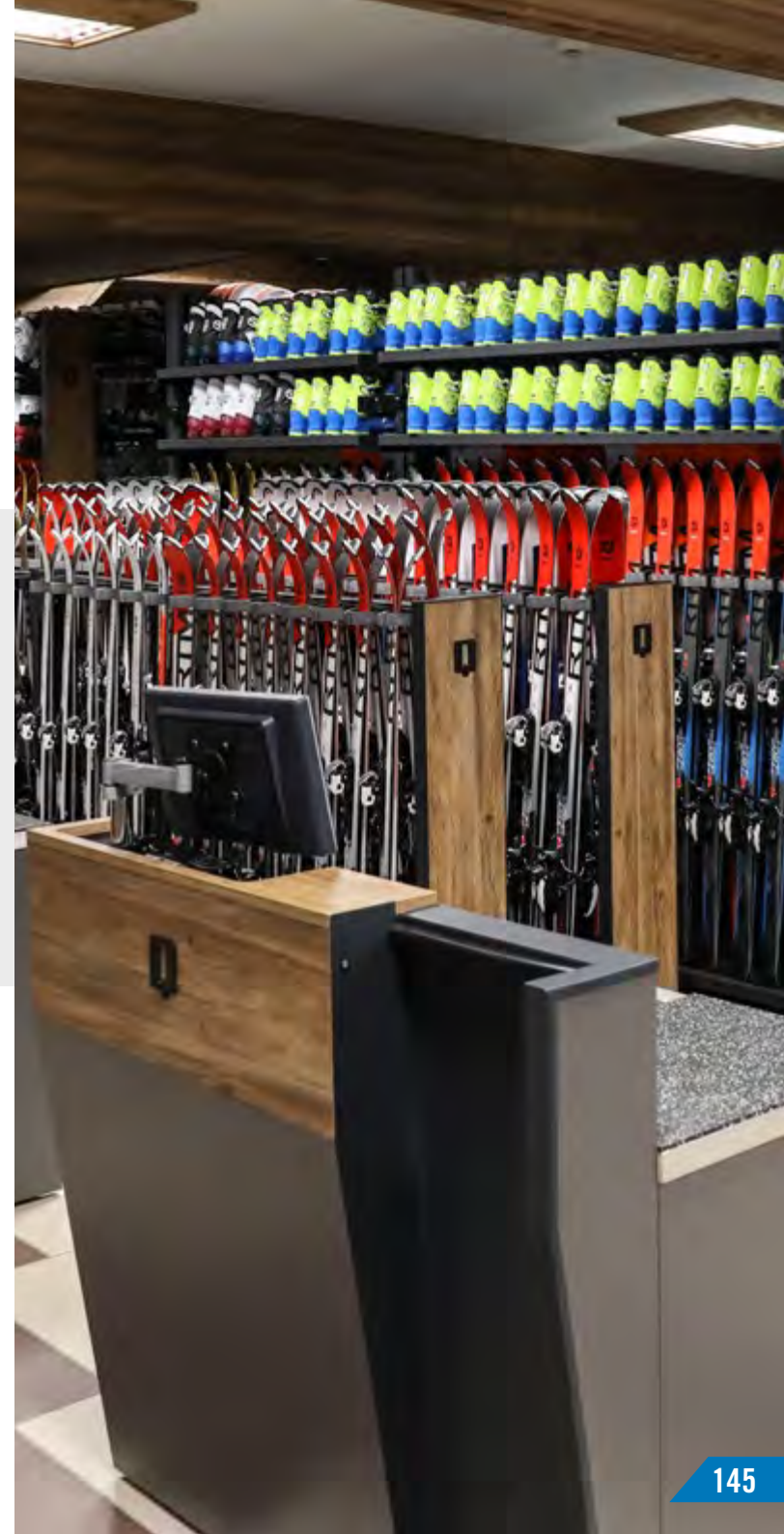
The SKI STAND features a smart and sturdy construction that prevents the winter sports equipment from slipping over or falling out. Integrated cross bars with rubber coating fix the skis or snowboards for a firm grip. The floor is equipped with a rubber mat.

	Width x Depth x Height	Item-No.	Cap.*
CLASSIC	350 x 450 x 1150 mm / 1'2" x 1'6" x 3'9"	1072702	2 - 3
UNIQ	350 x 450 x 1150 mm / 1'2" x 1'6" x 3'9"	1071952	2 - 3

\* Ski pairs

	Width x Depth x Height	Item-No.	Cap.*
CLASSIC	700 x 450 x 1150 mm / 2'4" x 1'6" x 3'9"	1071953	4-5 / 2
UNIQ	700 x 450 x 1150 mm / 2'4" x 1'6" x 3'9"	1074860	4-5 / 2

\* Ski pairs / snowboards



## RENTAL BENCH



Storage for skis and boards combined with a comfortable bench - effectiveness in the smallest space!

Length x Width x Height	Item-No.	Capacity
1000 x 450 x 1200 mm / 3'3" x 1'6" x 3'11"	1055581	8 ski pairs

## BENCH

### Classic Line



Comfortable bench in timeless design with sturdy underframe and height-adjustable feet.

Length x Width x Height	Item-No.
1000 x 350 x 530 mm / 3'3" x 1'2" x 1'9"	1056067
1250 x 350 x 530 mm / 4'1" x 1'2" x 1'9"	1056068
1500 x 350 x 530 mm / 4'11" x 1'2" x 1'9"	1074913

## BENCH

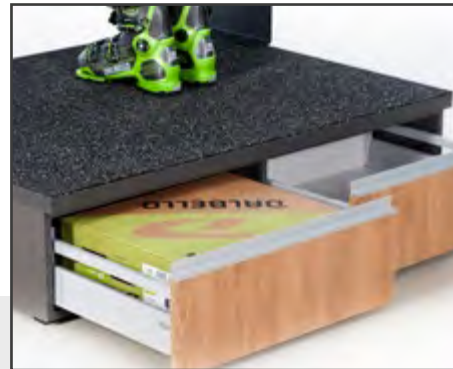
### UniQ Line



Comfortable bench in a modern design with height-adjustable feet. Various wood variants available.

Length x Width x Height	Item-No.
1000 x 350 x 530 mm / 3'3" x 1'2" x 1'9"	1074188
1250 x 350 x 530 mm / 4'1" x 1'2" x 1'9"	1072888
1500 x 350 x 530 mm / 4'11" x 1'2" x 1'9"	1074940

## BOOT FITTING STATION



surface made of extremely durable  
and non-slip rubber coating

Practical combination of the BENCH UNIQ and the BOOT FITTING platform to comfortably try on ski boots. Integrated, high-quality drawers offer generous storage space. The BOOT FITTING STATION is particularly resistant to wear and damage.

Length x Width x Height

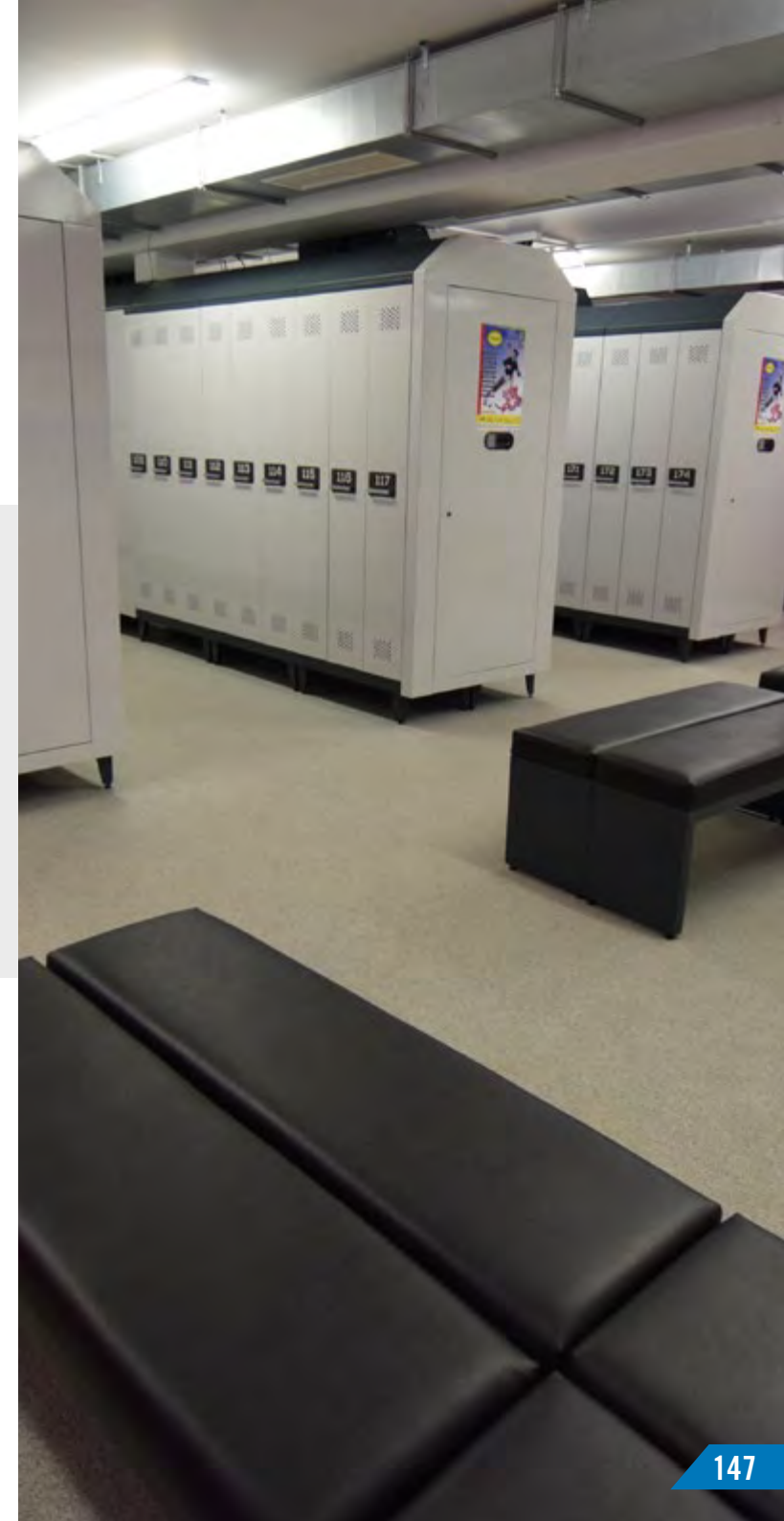
Item-No.

1000 x 1000 x 300+530 mm / 3'3" x 3'3" x 1'+1'9"

1076821

1250 x 1000 x 300+530 mm / 4'1" x 3'3" x 1'+1'9"

1076912





# DEPOT LOCKERS & LOCKERS

Safe storage of your valuables

In the LOCKER you can easily store small items such as bags, street shoes or other valuables.

The DEPOT LOCKERS, on the other hand, have been developed to store the complete winter sports equipment. In the closets boot drying tubes are integrated to dry the damp shoes from day to night.

The storage cabinets can be purchased with different locking systems. LOCKERS with key or coin lock and DEPOT LOCKERS with key, coin or electronic card lock.

## LOCKER



locking system

available with key or coin lock

Storage of your valuables in the smallest space. Also available with coin collect / return locks.

Length x Width x Height	Capacity*	Item-No.
320 x 460 x 1900 mm / 1'1" x 1'6" x 6'3"	5	1055577
580 x 460 x 1900 mm / 1'11" x 1'6" x 6'3"	10	1055578
840 x 460 x 1900 mm / 2'9" x 1'6" x 6'3"	15	1055579

## MINI DEPOT



safe storage through  
personal locking system

fixation of the skis in  
aluminum rail



Safe storage of winter sports equipment. Also available with coin collect / return locks.

Length x Width x Height

Capacity\*

Item-No.

1500 x 820 x 1300 mm / 4'11" x 2'8" x 4'3"

22

1055580



## DRYING UNITS FOR DEPOT LOCKER

To dry the equipment, the Depot Lockers can be equipped with a drying unit. This is available with room air or with integrated heating.

### DRYING UNIT ROOM AIR

Item-No.

1071591

### DRYING UNIT HOT AIR

Item-No.

1068909

Each Single Depot Locker requires a drying unit. For the Double Depot Locker 350, one unit is sufficient.

## DEPOT LOCKER 350



different locking systems

all Depot Lockers are available with a key, coin or electronic card lock

integrated drying system for boots, helmet rest, space for skis and poles

The safe storage and drying of the winter sports equipment for you or the whole family. For the best possible use of space, the DEPOT LOCKERS are also available in direct connection (DOUBLE with two connected lockers).

Length x Depth x Height	Version	Set*	Item-No.
350 x 550 x 2150 mm / 1'2" x 1'10" x 7'1"	Single	2	1054894
700 x 550 x 2150 mm / 2'4" x 1'10" x 7'1"	Double	4	1055537

\*Set consists of a pair of ski / snowboard / boots / poles and helmet



## DEPOT LOCKER 500



secure stand

due to height-adjustable feet  
with or without steel cover

various floor plate options for  
water drainage available

DOUBLE version

direct connection of the lockers



The safe storage and drying of the winter sports equipment for you or the whole family. For the best possible use of space, the DEPOT LOCKERS are also available in direct connection (DOUBLE with two connected lockers).

Length x Depth x Height	Version	Set*	Item-No.
500 x 550 x 2150 mm / 1'8" x 1'10" x 7'1"	Single	4	1054895
1000 x 550 x 2150 mm / 3'3" x 1'10" x 7'1"	Double	8	1055539

\*Set consists of a pair of ski / snowboard / boots / poles and helmet



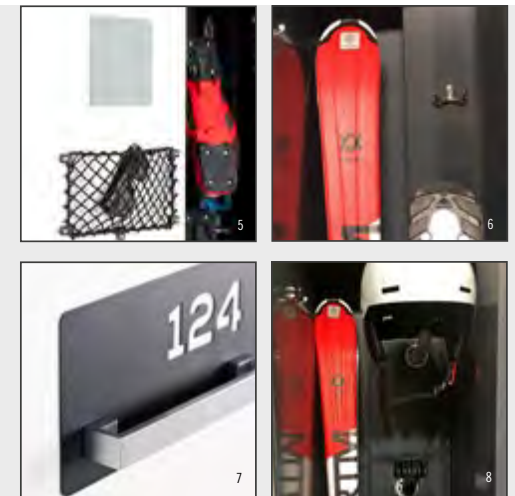
## ADDITIONAL EQUIPMENT DEPOT LOCKER



All DEPOT LOCKERs can be equipped with a locking system of your choice.

### LOCKING SYSTEMS

- standard key lock
- coin collect lock <sup>1</sup>
- coin return lock <sup>2</sup>
- electronic locking system <sup>3</sup>
- DigiLock Sola keypad lock <sup>4</sup>
- DigiLock Axis keypad lock with RFID reader



Choose from various equipment options to customize your DEPOT LOCKER to your individual needs.

### ACCESSORIES

- mirror M or L <sup>5</sup>
- door net M or L <sup>5</sup>
- additional hanger <sup>6</sup>
- steel plate with door number <sup>7</sup>
- logo cut in door
- drying tube for gloves
- drying tube for helmets <sup>8</sup>

## ADDITIONAL EQUIPMENT



There are many options for covering and equipping the DEPOT LOCKERS, as well as practical solutions for draining melt water at the bottom of the cabinet. Let us advise you on which equipment suits you best.

### DOOR DESIGN

- standard door <sup>9</sup>
- double door construction <sup>10</sup>
- door made of furniture board

### WATER DRAINAGE

- grated steel floor plate <sup>11</sup>
- rubber mat for floor plate
- stainless steel full floor plate with <sup>12</sup> water drainage

### FRONT COVERS

- stainless steel blind <sup>13</sup>
- galvanized steel blind anthracite <sup>14</sup>
- top cover to hide cabling <sup>15</sup>

### SIDE WALL COVERS

- steel cover
- furniture board
- integrated reader <sup>16</sup>

**NOTES:**

**DATE:**

***R***



# PURCHASE ORDER FORM

## Fax form for copying

For requested purchase please copy and fill in the order form and send it back to us. Or you can easily order via e-mail. In the case of a purchase order before 12 o'clock, we guarantee to ship on the same day in Germany (provided it is in stock). Our terms and conditions you will find on [www.reichmann.com](http://www.reichmann.com).

Amount	Description / Name of the Item	Item-No.	Unit price	Total price

Company / Name \_\_\_\_\_

Address / Number: \_\_\_\_\_

Postcode / Country: \_\_\_\_\_

Customer number: \_\_\_\_\_

Requested delivery date: \_\_\_\_\_

☐ Charge forward ☐ Invoice ☐ Association ☐ Credit card

In case of credit card payment we will contact you about credit card information.

Phone: \_\_\_\_\_

Fax: \_\_\_\_\_

E-Mail: \_\_\_\_\_

Date / Signature: \_\_\_\_\_

The delivery time depends on the delivery amount and distance. In case of delivery to Switzerland we will take over the customs declaration.

### Reichmann & Sohn GmbH

Rudolf-Diesel-Strasse 6-8  
89264 Weissenhorn  
Germany

#### Our contact:

Phone +49 7309 875 75

Fax +49 7309 875 50

**[bestellung@reichmann.com](mailto:bestellung@reichmann.com)**

**[www.reichmann.com](http://www.reichmann.com)**

The indicated prices are ex-factory, excluding transport, packaging and VAT. Validity depends on current price list. Until the full payment the goods will be ownership of the Reichmann & Sohn GmbH. Place of fulfillment and place of jurisdiction is Memmingen / Germany.

The validated terms and conditions of the Reichmann & Sohn GmbH are counting. Errors and omissions excepted. All previous offer are losing their validity.

#### Shipping prices

Europe:\*  
up to 10 kg 12,- EUR  
10 - 50 kg 20,- EUR

USA:  
calculated at cost

\* Starting from a purchase accessory order value of 750,- EUR net the delivery will be free of charge. In case of a purchase order of 40 kg / 50 kg the delivery happens by a forwarding agency.

