

Roar

**Next Generation
Roster 2026**

Who are we?

Roar is a boutique agency based in London, UK representing a curated selection of the most talented fine, illustrative, and graphic artists both established and emerging within the creative industry worldwide.

Roar aims to promote the art and artists within the New Contemporary field, focussing on championing our artists work, whilst also creating a safe space for them to seek advice and grow within their careers.

www.roarartists.com | [@roarartists](https://www.instagram.com/roarartists)

What is the Next Generation Roster?

The Next Generation is a curated roster of 10 emerging artists who are in the first three years of their creative careers.

These selected artists join the Roar family for one year, where they will receive guidance, support, and promotion to help develop their professional careers.

Meet the artists:

Ailish Beadle | Ieva Paliukaitytė | Helen Lo | Benny Douet
Esme Lower | Julia Specht | Julia Marinelli | Luísa Fantinel
Rensi Ardinta | Suwen Han

FUNK





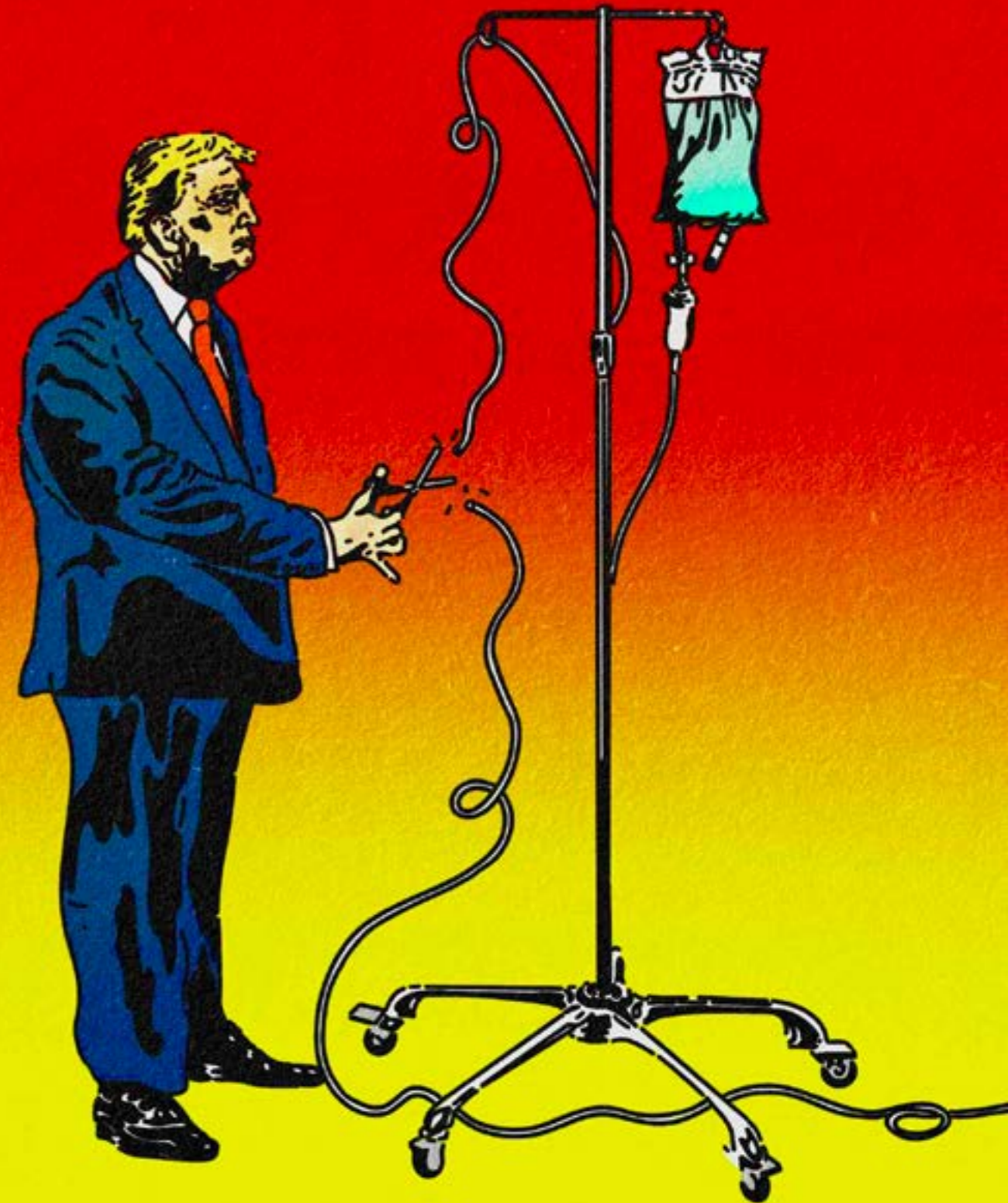




Benny Douet

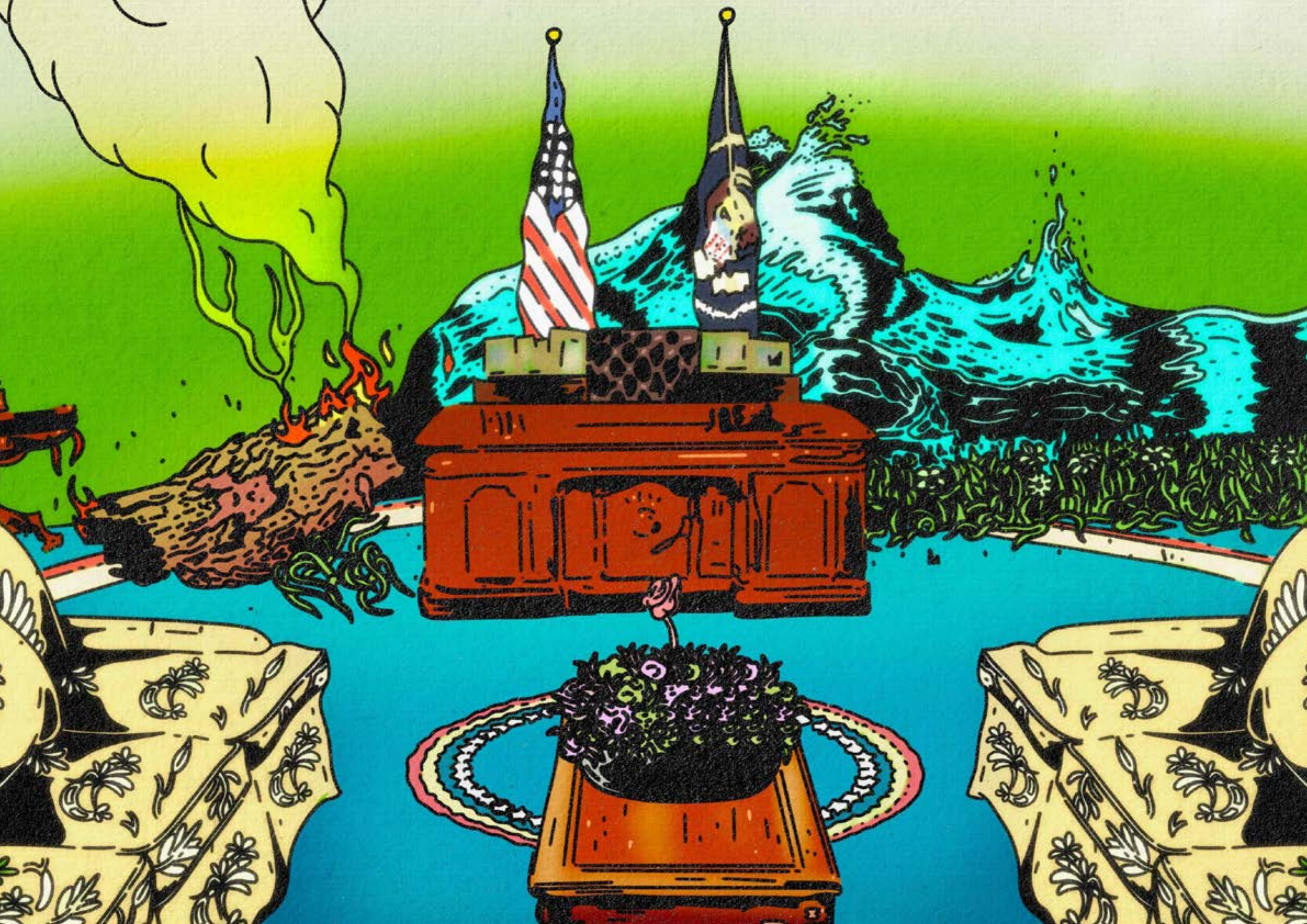
Benny Douet is a London-based artist specialising in illustration and animation. Benny's work is shaped by a distinctive lens that finds the uncanny in the everyday, often highlighting the strange and surreal within suburban or domestic environments. Working across editorial illustration, music videos, and a variety of projects, he strives to combine stylised line work, layered gradients, and rich textures to create imagery that is both compelling and narratively driven.

You can follow Benny on instagram at [@bennydouet](https://www.instagram.com/bennydouet)







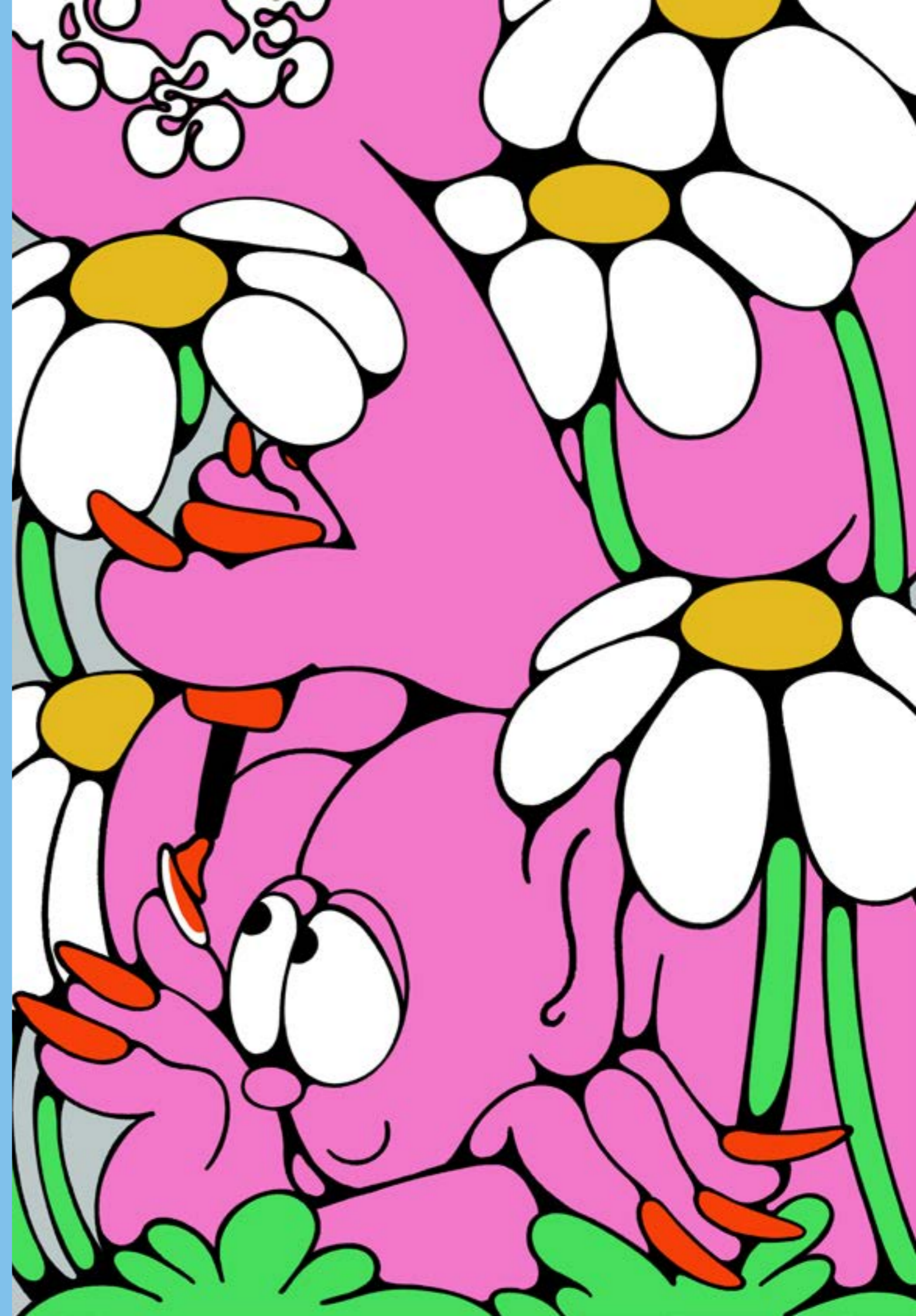




Esme Lower

Esme Lower, also known as Melo, is a multimedia artist working across murals and illustration, exploring themes of liveness, musicality, the body, strength, and playfulness. Drawing inspiration from the comics and popular culture she grew up with, Esme creates distinctive, character-driven stories that bring ideas to life with boldness and joy.

You can follow Esme on instagram at [@melo.grafic](https://www.instagram.com/melo.grafic)





RWC
WOMEN'S
ENG25



ENERGY
NEVER STOPS

Gallogher
INSURANCE

CANTON

Gallogher
INSURANCE

Gallogher
INSURANCE

Gallogher
INSURANCE





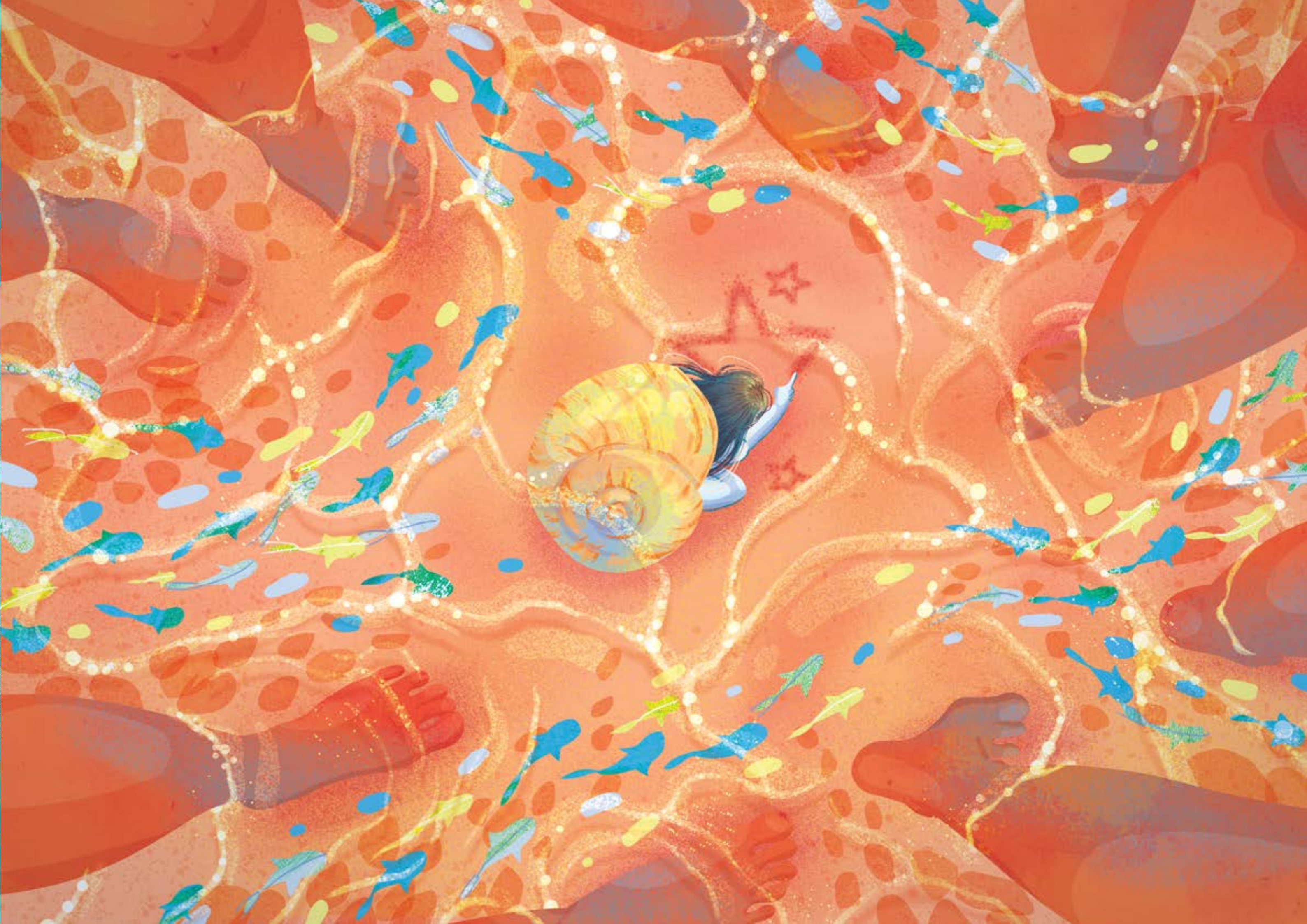


Helen Lo

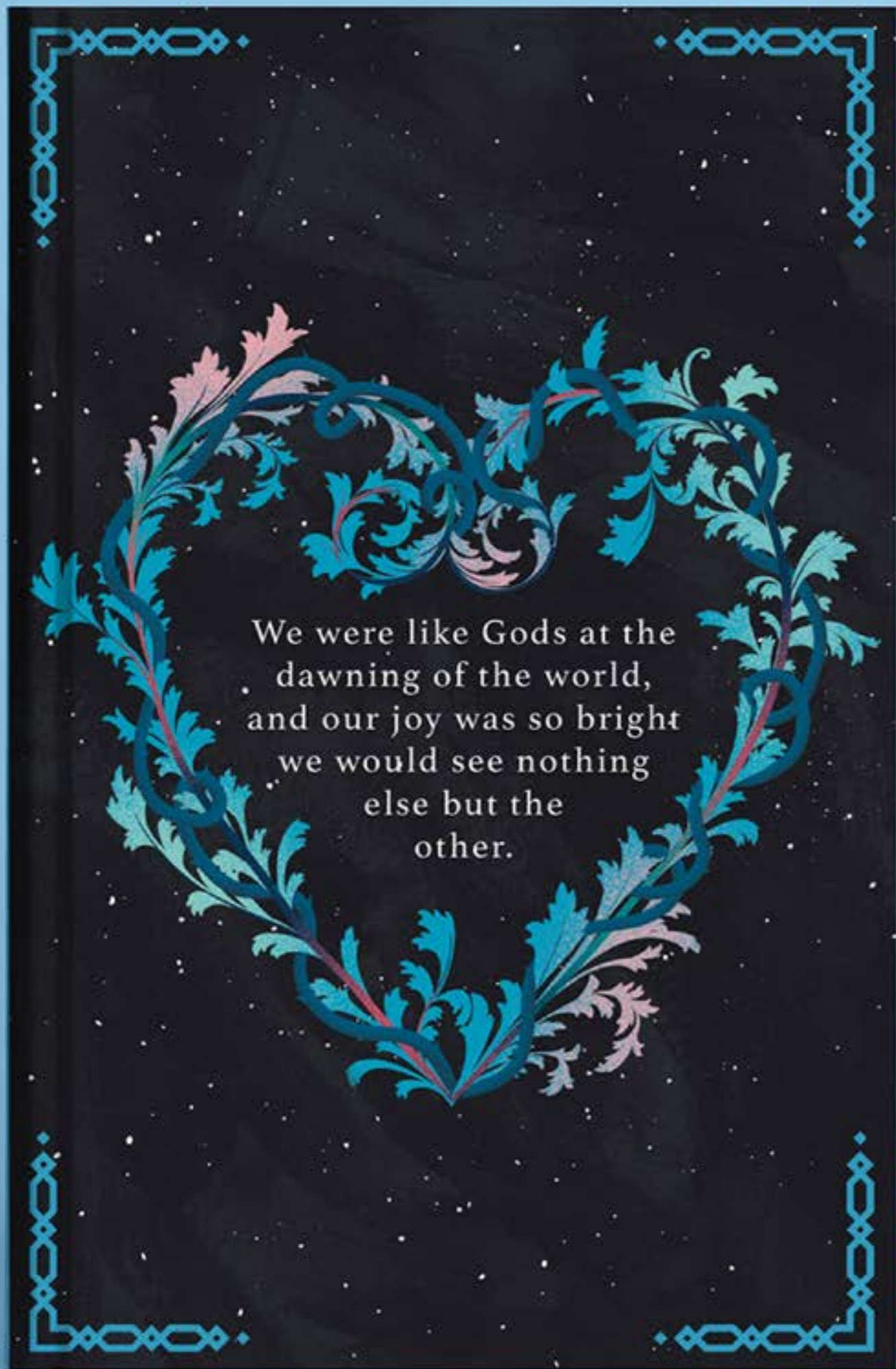
Helen Lo is an illustrator who creates whimsical and surreal art with a strong sense of narrative. Drawing from her roots in Hong Kong and her experiences in the UK, Helen weaves elements of both cultures into her work. Helen's work is often art has described as "a bundle of light" and she believes that holding onto a childlike imagination is essential to staying creative.

You can follow Helen on instagram at [@_helenillo](https://www.instagram.com/_helenillo)











Ieva Paliukaitytė

Ieva Paliukaityte is a Lithuanian illustrator who creates funky and slightly wicked (in a good way!) characters. Ieva loves playing with shapes, vibrant colours, hand drawn details, and thrives on turning curiosity and humour into visuals with attitude and charm. Outside the studio, Ieva is a board-sports addict, ceramics newbie and devoted dog lover.

You can follow Ieva on Instagram at @iev.p







POWER OF FIRE
IN ONE BITE!

50'S
SQUARES

FULL OF
POLYPHENOLS,
ANTIOXIDANTS
XX MINERALS
AND ALL KINDS
OF OTHER
MIRACULOUS
STUFF

APPROVED
BY SOMEONE



BERRY
POWER
SQUARES

SOME
KIND OF
CERTIFICATE

BERRY
FLAVOUR



Julia Marinelli (JUM)

Julia Marinelli (also known as JUM) is a Brazilian illustrator, muralist and animator who after 10 years of living in Hong Kong, has recently made her way back home to São Paulo, Brazil. Julia works with multimedia and digital mediums to create colourful and visually striking pieces that are both bold and vibrant and delicate and dreamlike. Julia makes art that is impactful and invites the audience to explore and unlock their creative minds through their viewing of her pieces, she has worked in digital and traditional illustrations, paintings, murals, 2D animations, weaving and embroidery always with a heavy influence from nature, all forms of the female experience and the environments around her.

You can follow Julia on Instagram at [@by_jum_](https://www.instagram.com/by_jum_)







73RD STREET



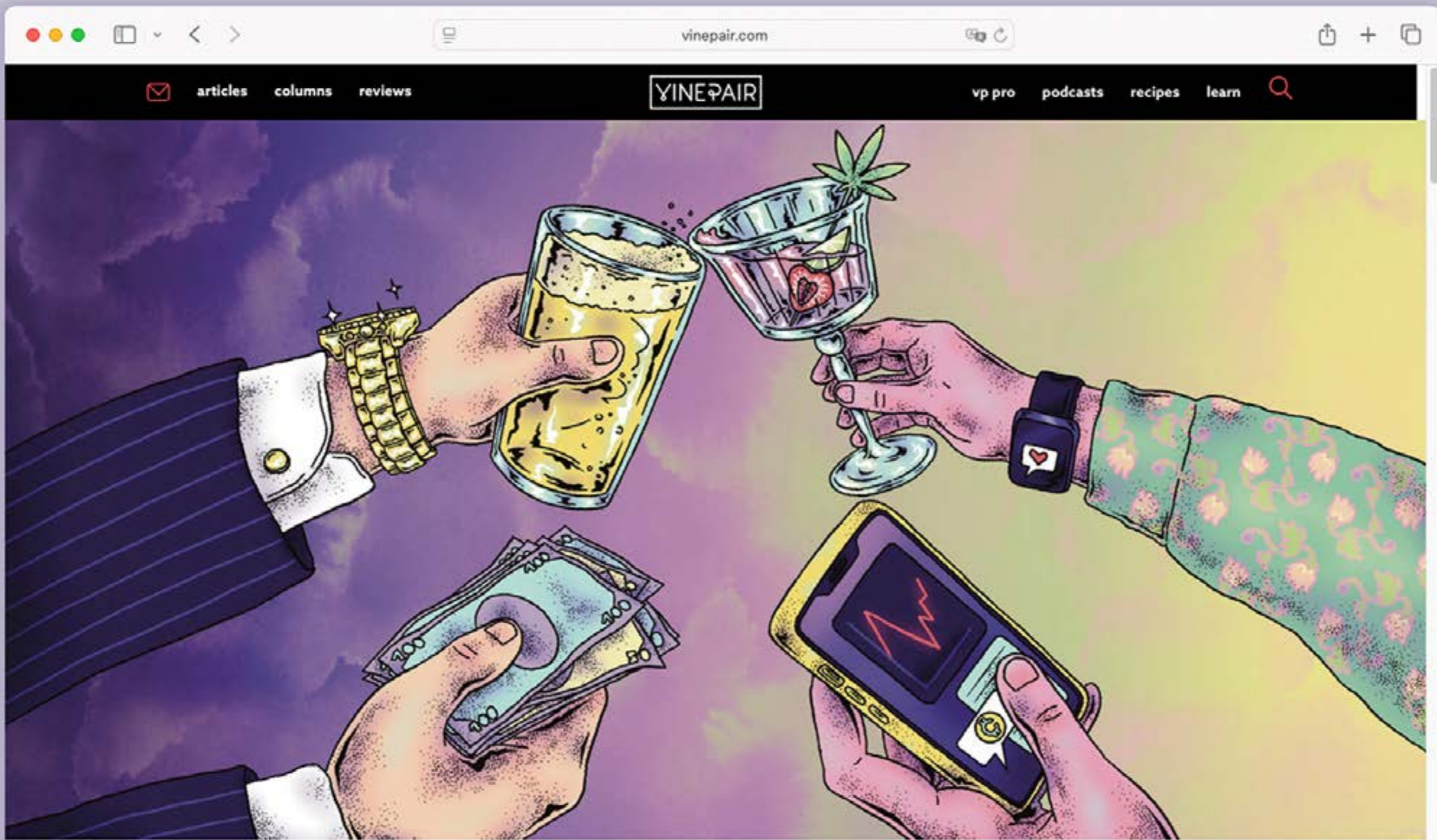


Julia Specht

Julia is a freelance illustrator based in Hamburg, Germany. Julia loves working on editorial illustration, delving into themes related to (pop) culture, psychology and science(-fiction). Julia's work leans toward bold and conceptual illustration somewhere between the surreal, dark and fun. Julia mostly works digitally and her style is a unique mix of manga-inspired lines with painterly airbrush vibes, but she also loves to go analog with watercolor and ballpoint pen.

You can follow Julia on instagram at [@ju.liaspecht](https://www.instagram.com/juliaspecht)





Investors Have Become More Selective About Alcohol Investments — for Now



WORDS:
KATE BERNOT

PUBLISHED:
JULY 10, 2025

ILLUSTRATION:
JULIA SPECHT



Weird Science

Words by
WILL SLOAN
Illustrations by
JULIA SPECHT

Watching every screen adaptation of Mary Shelley's 'Frankenstein' would take an age. Here are 10 of the strangest ones out there.

When James Whale's *Frankenstein* was unleashed in 1931, it set a cinematic template for Mary Shelley's story that endures nearly a century later, while also departing radically from her original novel. The more than 400 feature-film adaptations (plus hundreds of shorts and TV shows) produced in its wake have displayed a push-pull relationship with the source material. Some, including Kenneth Branagh's 1994 prestige pic and Guillermo del Toro's new adaptation, have trumpeted their fidelity to the original text. Other filmmakers have used Shelley and/or Whale as mere jumping-off points for their wild imaginations. Here are 10 unusual adaptations from around the world that attest to the lasting influence of the story and its iconography... as well as its infinite flexibility.

Frankenstein, Boris Karloff occasionally returned to the lore in more comfortable mad-doctor roles. When the Universal Horror films of the 1930s and '40s were sold to television, they captured the imaginations of baby boomer children, spurring the independent studio Allied Artists to cash in with this campy pastiche. Karloff delivers one of his hammiest performances as a descendant of Dr Frankenstein, who allows a TV crew to film at his gothic castle to fund his atomic-powered experiments and then starts using the crew for body parts.

Frankenstein vs Baragon

ISHIRO HONDA, 1965

Wills H O'Brien, the pioneering special effects artist who gave life to King Kong, spent his last years developing a project called *King Kong vs. Frankenstein...*, but had his heart broken when Toho Co Ltd turned it into *King Kong vs. Godzilla* (1962) without his participation. O'Brien died in 1962, and three

Frankenstein 1970

HOWARD W KOCH, 1958

Though the screen's definitive Frankenstein's Monster swore off playing his signature role after 1939's *Son of*





Luisa Fantinel

Luisa Fantinel is a Brazilian illustrator and graphic designer who explores awesomeness through vibrant colors, dynamic shapes, and expressive characters. Her art is inspired by the way she loves to live life, celebrating pleasurable moments, whether exhilarating and full of movement or quiet, calm pauses.

Her love for art began in childhood while painting with her grandmother, and this handmade touch remains present in her work, bringing it an expressive personality.

You can follow Luisa on instagram at [@luisafantinel_](https://www.instagram.com/luisafantinel_)





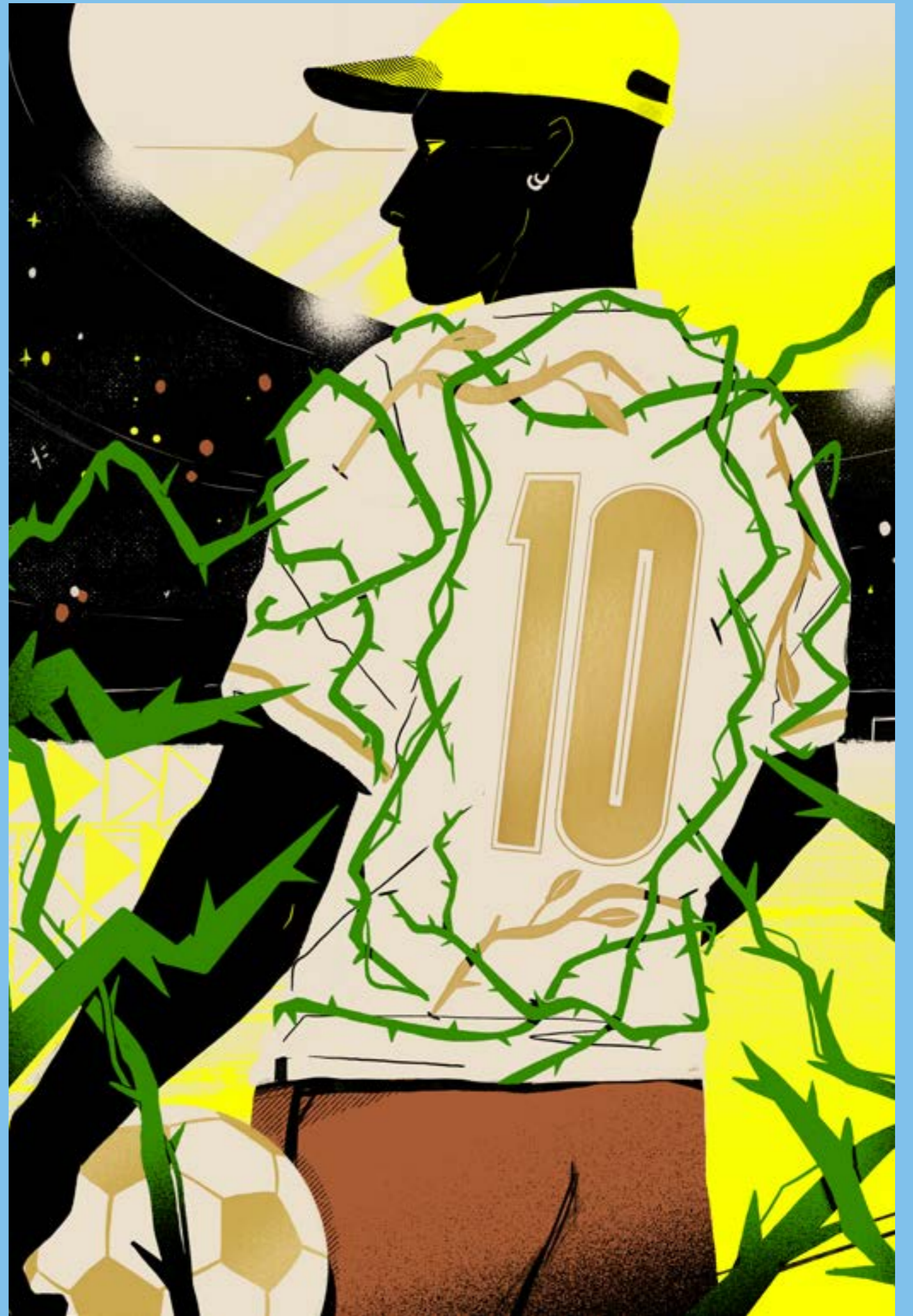
A MESA DAS MÃES

A cara cansada da minha mulher denunciava que ela regressava de um terreno inóspito, insalubre e desafiador, onde são necessárias muitas habilidades e uma determinação de ferro para sobreviver: uma festa de aniversário infantil.

Ainda não sabíamos que Amir era autista, mas ele já demonstrava seu desconforto com salões de festas cheios de luzes que piscavam ou rodavam, enquanto uma voz estridente maltratava nossos tímpanos com uma música de infinitos decibéis, e pequenos diabinhos gritavam atrás do animador da festa, dopados por uma quantidade obscena de açúcar.

Até chegar ao ponto em que ele saltitava feito um sapo cururu na beira do rio, era preciso passar por alguns rituais e muita, mas muita, paciência. Tudo começava no carro: por quase toda a infância, nosso filho mais velho tinha o singular costume de dormir 10 minutos antes de chegarmos ao nosso destino. Ainda não sei como ele fazia isso, mas não importava se o trajeto tinha 15 minutos ou duas horas, ele dormiria apenas a 10 minutos da linha de chegada.



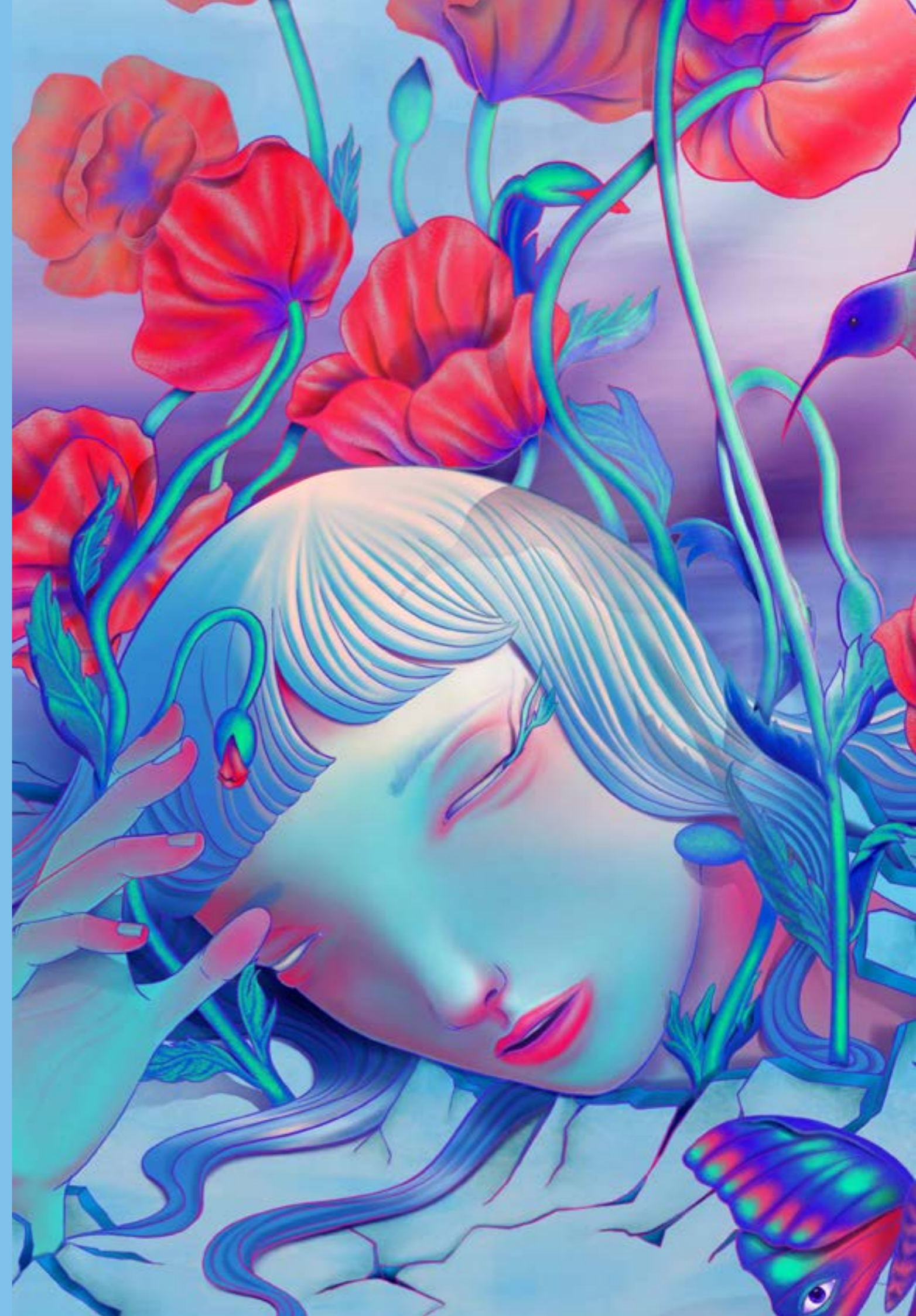




Rensi Ardinta

Rensi Ardinta is a visual artist whose practice centres on surreal imagery and emotional symbolism. Influenced by early childhood exposure to Disney animation and Japanese anime, Rensi's work blends narrative-driven visuals with a strong sense of composition, colour, harmony, and visual structure. Through dreamlike and symbolic compositions, she explores the intersection of the human form, nature, and the subconscious, often portraying feminine figures immersed in vivid, otherworldly environments.

You can follow Rensi on instagram at [@rensiardinta](https://www.instagram.com/rensiardinta)

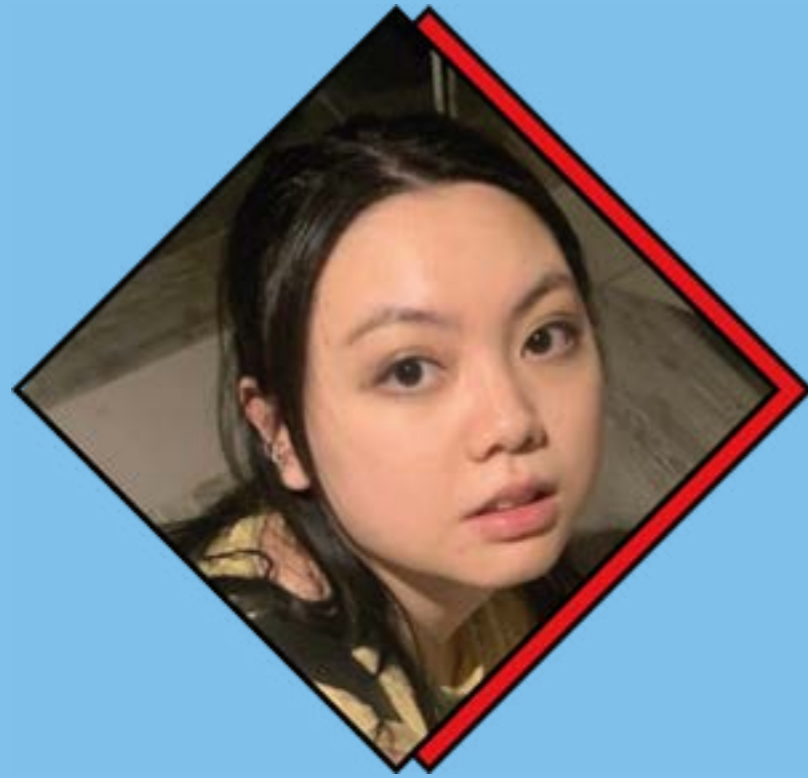




Rosetta





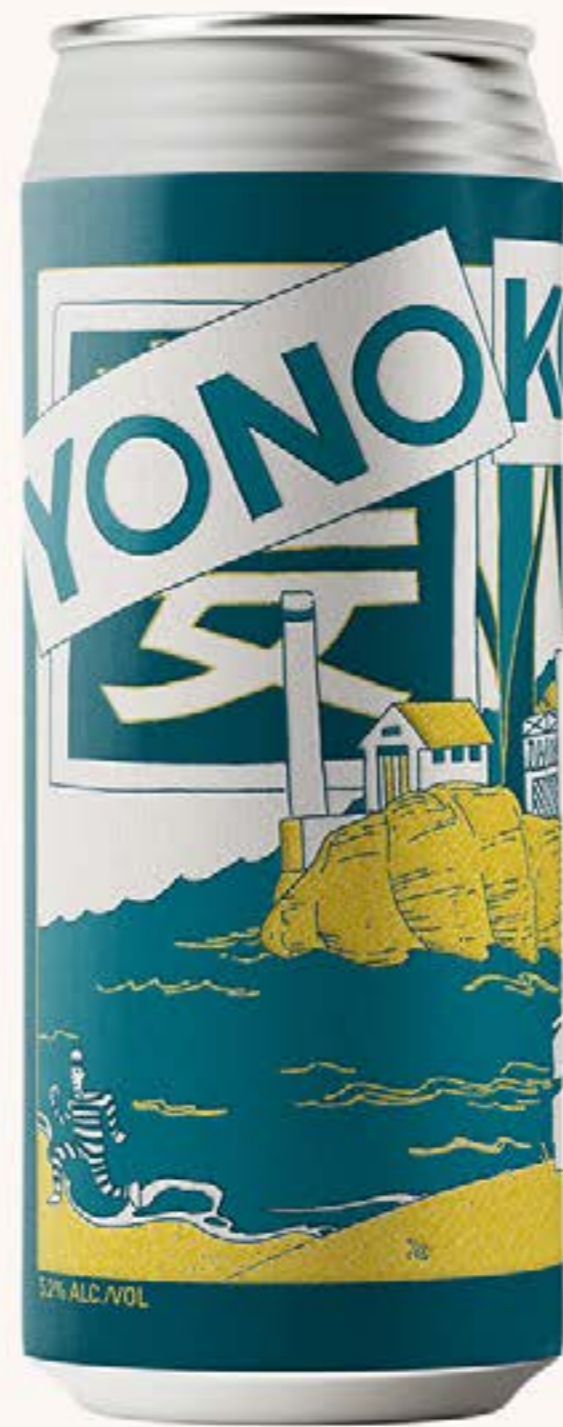


Suwen Han

Suwen Han is an illustrator based in California, working across campaign, product, and brand-focused visuals. Suwen's work combines whimsical structured line drawing with a strong contemporary feel.









Want to work with us?

If you are interested in any of the artists on our roster, or you'd just like to have a chat about your current and/or future projects, send us an email and we'll get back to you as soon as possible. Let's make awesomeness happen!

General enquiries: info@roarartists.com

Director & Agent: skye@roarartists.com

www.roarartists.com | [@roarartists](https://www.instagram.com/roarartists)

Roar