

# ISZL | HIGH SCHOOL PROFILE

## 2025/26

### OUR SCHOOL

Founded in 1961, ISZL is a private, non-profit day school providing education for students aged 3 to 18 in Central Switzerland. Through dynamic and hands-on learning opportunities offered in and outside the classroom, a rigorous academic programme, community and service oriented experiences, and the international cultures represented by our community, ISZL connects students to the greater world around them. ISZL is accredited by the Council of International Schools (CIS) and the New England Association of Schools and Colleges (NEASC), a US accrediting commission.

CEEB CODE	IB CODE
<b>796221</b>	<b>1837</b>
UCAS NUMBER	PEARSON BTEC CENTRE NUMBER
<b>48147</b>	<b>91244</b>

### OUR MISSION

We are a community of learners determined to make the world – or our corner of it – a better, kinder place. We reflect our values in everything we do so that we make the most of opportunities and challenges in a spirit of enthusiastic inquiry.

### OUR VISION

We help every student turn their learning into action, creating the opportunity to stretch themselves further and achieve more than they believe possible.

### ISZL AT A GLANCE 2025–26 FACTS AND FIGURES

### KEY CONTACTS

#### ISZL RIVERSIDE CAMPUS

Rothusstrasse 4b  
6331 Hünenberg - Switzerland  
Tel. +41 41 768 29 50  
www.iszl.ch

#### LEADERSHIP

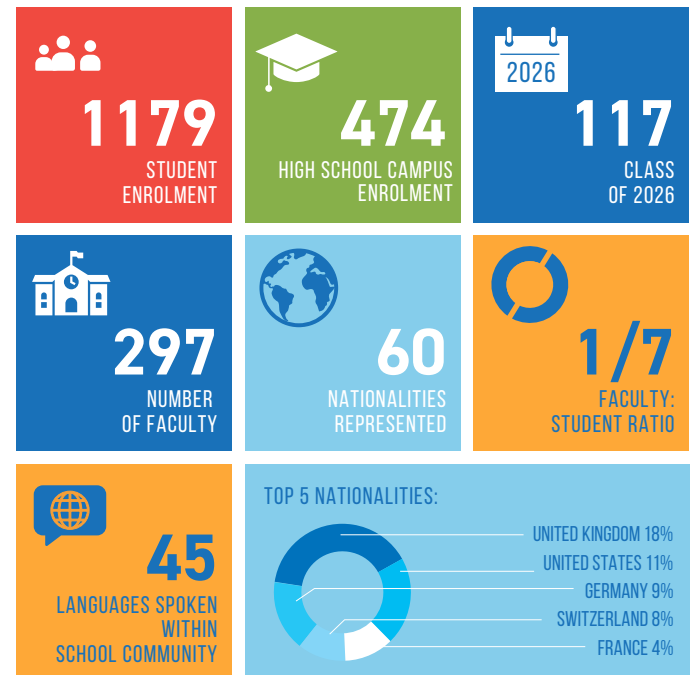
School Director: **Barry Dequanne**  
High School Principal: **Linsey Lawrence**

#### CURRICULUM COORDINATORS

IB Diploma and IB MYP Coordinator:  
**Kelli Meeker** - kelli.meeker@iszl.ch  
High School Programme Coordinator:  
**Robert Sugden** - robert.sugden@iszl.ch

#### UNIVERSITY ADVISORS

Interim Head of University Advising:  
**Skyler Bentley Hall** - skyler.bentleyhall@iszl.ch  
University Advisor  
**Zoe Whittle** - zoe.whittle@iszl.ch



## ACADEMIC PROGRAMME

ISZL provides a rigorous college preparatory high school curriculum that leads to our NEASC-accredited ISZL High School Diploma. All students partake in a well-rounded educational experience through the successful completion of the IB Middle Years Programme (MYP) in Grades 9–10. In Grades 11–12, students have the opportunity to choose between the IB Diploma Programme or ISZL High School Programme. At this time, we have approximately an even 50/50 split between students completing IBDP and those in the High School/AP Programme.

## HIGH SCHOOL GRADUATION REQUIREMENTS

In order to graduate from ISZL, students must demonstrate satisfactory completion of the IB Middle Years Programme and subsequent satisfactory completion of the IB Diploma Programme, or the ISZL High School Programme, including a minimum of:

- Ten courses** over Grades 11 and 12
- Six courses** in both Grades 9 and 10
- Four years:** Service Project(s)
- Three years:** English and Humanities and Science and Mathematics (at least one year in Grade 11 or 12)
- Two years:** Language Acquisition
- Two years:** Arts or Design or Physical and Health Education

## ISZL GRADING SYSTEM

ISZL uses a 7-point internal grading scale that is informed by, but not identical to, the IB 1–7 system. The school does not calculate or report a Grade Point Average (GPA), nor does it rank students.

ISZL 7-POINT GRADING SCALE	ISZL APPROXIMATE LETTER GRADE	ISZL APPROXIMATE PERCENTAGE RANGE
7	A+	98–100
6	A- / A	90–97
5	B / B+	83–89
4	C+ / B-	78–82
3	C- / C	70–77
2	D	60–69
1	F	0–59

ISZL also does not use a letter-based grading system. The equivalencies shown above are provided solely as guidance to help external institutions understand our 1–7 scale; they are not universal or formally recognised.

## AP® RESULTS 2022–2025

ADVANCED PLACEMENT® (AP)



CATEGORY	2022	2023	2024	2025
No. of AP Exams taken	267	296	331	342
ISZL % of passing scores	90%	91%	89%	95%
ISZL Mean Score	4.0	4.0	4.1	4.1
ISZL Scores of 4+	72%	73%	75%	77%



## IB RESULTS 2022–2025

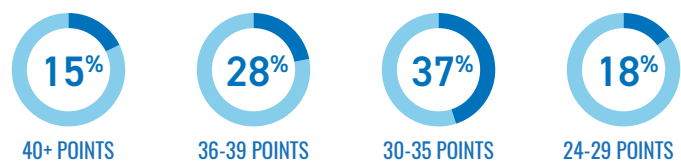
INTERNATIONAL BACCALAUREATE® DIPLOMA PROGRAMME (IBDP)



CATEGORY	2022	2023	2024	2025
No. of IB Diploma Candidates	59	61	65	68
ISZL % of Candidates passing Diploma	100%	97%	97%	97%
ISZL Average IB Score	38	35	35	35



ISZL 2025 IBDP STUDENTS SCORING:



## BTEC RESULTS

PEARSON BTEC INTERNATIONAL LEVEL 3 IN CREATIVE MEDIA 2025

DIPLOMA	SUBSIDIARY DIPLOMA
Number of candidates	Number of candidates
Distinction * Distinction * (D*D*)	Distinction* (D*)
Distinction * Distinction (D*D)	Distinction (D)
Merit Merit (MM)	Merit (M)
Pass Pass (PP)	Pass (P)



## 2022-2025 UNIVERSITY ACCEPTANCES

A REPRESENTATIVE LIST OF ACCEPTANCES OVER THE LAST THREE YEARS INCLUDES, BUT IS NOT LIMITED TO:

<p> <b>AUSTRALIA</b> RMIT University of Melbourne University of Queensland University of Sydney</p> <p> <b>BELGIUM</b> Ghent University KU Leuven</p> <p> <b>CANADA</b> Concordia University Emily Carr University of Art and Design McGill University McMaster University Queen's University Trent University University of Alberta University of British Columbia University of Guelph University of Toronto University of Waterloo Western University York University</p> <p> <b>CHINA</b> Fudan University</p> <p> <b>FRANCE</b> American University in Paris Collège Universitaire de Sciences Po EDHEC Business School ESCP-Europe - Paris Paris College of Art</p> <p> <b>GERMANY</b> Bard College Berlin Bonn-Rhein-Sieg University of Applied Sciences Ludwig Maximilian University of Munich Mittweida University of Applied Sciences MSH Medical School Hamburg</p> <p> <b>GREECE</b> University of Crete The American College of Greece</p> <p> <b>HONG KONG</b> Hong Kong University of Science and Technology University of Hong Kong</p> <p> <b>HUNGARY</b> Semmelweis University of Medical Sciences</p> <p> <b>IRELAND</b> Trinity College Dublin University College Dublin</p> <p> <b>ITALY</b> Academia Italiana Humanitas University Istituto Marangoni Università Bocconi Università di Torino</p> <p> <b>NETHERLANDS</b> Amsterdam University College Amsterdam University of Applied</p>	<p>Sciences Breda University of Applied Sciences Eindhoven University of Technology Erasmus University College Erasmus University Rotterdam Fontys University of Applied Sciences HAN University of Applied Sciences Hanze University of Applied Sciences Hotel Management School Maastricht Leiden University Leiden University College The Hague Maastricht University Rotterdam Business School Rotterdam University of Applied Sciences Technical University of Delft The Hague University of Applied Sciences Tilburg University University College Roosevelt University College Tilburg University College Venlo University of Amsterdam University of Groningen University of Twente Utrecht University Vrije Universiteit Amsterdam Windesheim University of Applied Sciences</p> <p> <b>LATVIA</b> Rīga Stradins University</p> <p> <b>SPAIN</b> Abat Oliba CEU University EAE Business School ESADE Business School European University of Madrid IE University Universidad Carlos III de Madrid (UC3M) Universidad Europea University of Navarra</p> <p> <b>SWEDEN</b> Luleå University of Technology Lund University Royal Institute of Technology (KTH) University of Gävle</p> <p> <b>SWITZERLAND</b> École Hôtelière de Lausanne École Polytechnique Fédérale de Lausanne (EPFL) ETH Zurich EU Business School - Geneva Franklin University Switzerland Glion Institute Les Roches Lucerne University of Applied Sciences Swiss Business School UIBS Zurich Università della Svizzera italiana University of Lausanne University of St. Gallen University of Zurich Webster University Geneva</p> <p> <b>UNITED KINGDOM</b> Abertay University Arts University Bournemouth</p>	<p>Aston University Birkbeck, University of London Birmingham City University Bristol University British and Irish Modern Music Institute (BIMM) Brunel University London Cardiff Metropolitan University Cardiff University City University of London Coventry University Durham University Falmouth University Glasgow Caledonian University Goldsmiths, University of London Hartpury University Heriot-Watt University Imperial College London Istituto Marangoni London Keele University King's College London Kingston University Lancaster University Leeds Arts University Leeds Beckett University Leeds Trinity University Liverpool Hope University London School of Economics and Political Science Loughborough University Manchester Metropolitan University Middlesex University Newcastle University Norwich University of the Arts Nottingham Trent University Queen Mary University of London Ravensbourne University London Regent's University Robert Gordon University Royal Holloway, University of London Royal Veterinary College, University of London Sheffield Hallam University St. George's, University of London Swansea University University College London University For the Creative Arts University of Aberdeen University of Bath University of Birmingham University of Brighton University of Bristol University of Cambridge University of Central Lancashire University of Dundee University of East Anglia University of East London University of Edinburgh University of Essex University of Exeter University of Glasgow University of Leeds University of Leicester University of Liverpool University of Manchester University of Nottingham University of Oxford University of Plymouth University of Reading University of Salford University of Sheffield</p>	<p>University of Southampton University of St. Andrews University of Stirling University of Strathclyde University of Surrey University of Sussex University of the Arts London University of Warwick University of York</p> <p> <b>UNITED STATES OF AMERICA</b> Arizona State University Babson College Barnard College Bentley University Boston College Boston University Brown University California College of the Arts Carnegie Mellon University College of William and Mary Cornell University Detroit Institute of Music Education Drexel University Emerson College Emory University Florida Institute of Technology Fordham University George Washington University Georgia Institute of Technology Harvard University Indiana University at Bloomington Ithaca College Los Angeles College of Music New Jersey Institute of Technology New York University Northwestern University Parsons School of Design Pennsylvania State University Purdue University Rhode Island School of Design Ringling College of Art and Design Rochester Institute of Technology Rollins College Sarah Lawrence College Savannah College of Art and Design Stanford University Syracuse University Tufts University University of California, Davis University of California, Los Angeles University of California, San Diego University of Colorado Boulder University of Denver University of Illinois Urbana-Champaign University of Massachusetts Amherst University of Miami University of Michigan Ann Arbor University of North Carolina at Chapel Hill University of Pennsylvania University of Pittsburgh University of San Diego University of San Francisco University of Vermont University of Virginia University of Washington University of Wisconsin-Madison Virginia Tech Wake Forest University</p>
---	---	---	---