



WWW.INWARDBOUND.COM.SG

INWARDBOUND

ARTS EDUCATION PROGRAMMES

**YOUR ULTIMATE PROGRAMME GUIDE
FOR ARTS IN EDUCATION**

**MUSICALS
ENRICHMENT
ASSEMBLY SHOWS**

**MASTERCLASS PROGRAMMES WITH
PLAYWRIGHT & NTU LITERATURE PROFESSOR,
DR. GERALDINE SONG**



IB
INWARD
BOUND



North Vista Secondary School, *Dreams* (2009), Drama Centre Theatre

DISCOVER OUR PROGRAMMES



MORE THAN JUST ANOTHER CCA! Year-Long CCA Programmes

- Acting & Stagecraft
- Opportunities for Community VIA
- Full support of Professional Productions
- Specialised & Progressive Curricula
- Dedicated and Experienced Drama Educators

More details on [Page 46](#).

CRIME PREVENTION WITH OFFICER RAY! A Brand New Interactive Assembly Show for Primary Schools by the Singapore Police Force!

Looking for a fun and engaging way for your students to learn about crime prevention and civic responsibility? The **Singapore Police Force** brings you "Keep the Kampong Spirit Alive", a **FREE Assembly Show** curated specially for **Primary Schools** as Police mascot Officer Ray takes the characters on a journey of self-discovery! More details on [Page 25](#).



**BRIDGING COMMUNITIES THROUGH THE ARTS.
ENACTING CHANGE THROUGH EDUCATION.
NURTURING THE NEXT GENERATION IN EMPATHY.**



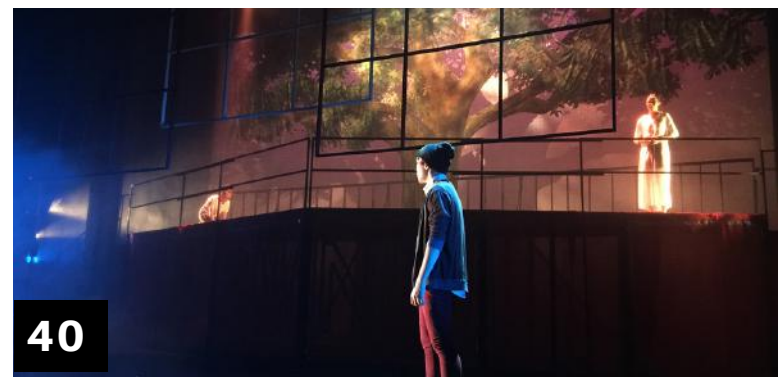
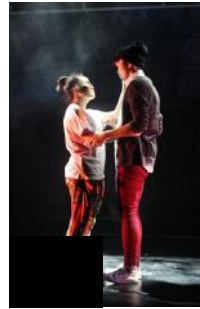
**SINGAPORE
POLICE FORCE**

inwardBOUND

table of contents

- 05** The Story Behind inwardBOUND
- 10** Signature Programmes
- 20** Assembly Shows
- 26** Drama in English and Literature Programmes
- 30** Literature Texts and Companion Programmes
- 34** CCE & Leadership Programmes
- 40** Drama CCA Enrichment
- 46** Year-Long CCA Programmes

www.inwardbound.com.sg
enquiry@inwardbound.com.sg
+65 9845 1854





Transformation through Drama





INTRODUCTION

inwardBOUND is a recognized Singaporean Arts Education Consultancy company, operating as a raiSE social enterprise. With a strong commitment to social responsibility, inwardBOUND collaborates closely with community partners to promote social change and empower youth as agents of activism. Our initiatives, including workshops, programs, and shows, have received numerous accolades, such as 68 Distinction Awards performances at the Singapore Youth Festival.

For over 15 years, we have tirelessly inspired thousands of participants and tens of thousands more audience members with our co-curricular programmes, touring shows, and our signature re:ACT Festival to drive social change. Our organic creation of a company has moved leaders in the theatre industry. We have always driven change and will continue to do so for many years to come.

www.inwardbound.com.sg



CORE VALUES

Excellence

We strive for excellence in all aspects of our work, from the curation of artworks to the delivery of exceptional experiences for our audiences.

Creativity

We embrace the power of creativity and celebrate artistic innovation, so that we can push boundaries and explore new artistic frontiers.

Inclusivity

We believe that art should be accessible to all, and we actively foster inclusivity by creating diverse and welcoming spaces for artists and audiences.

Community Engagement

We are committed to engaging with our local community and promoting art as a catalyst for social change, discourse, and cultural dialogue.

Collaboration

We value collaboration to create great art. That is why we seek partnerships with artists, organisations, and sponsors for meaningful collaborations.

Social Impact

We aim to make a lasting impact on the arts and cultural landscape, leaving a legacy that inspires future generations.



www.inwardbound.com.sg

SIGNATURE PROGRAMMES

MUSICALS 12

Crafting unforgettable musical experiences through writing, training, and technical staging.

RE:ACT CHANGEMAKER FESTIVAL 14

A grassroots theatre forum igniting change and community dialogue.

I.D.E.A. FESTIVAL 18

Our signature Interdisciplinary Exposure to the Arts Programme

FOR DRAMA CCA

STAGE CRAFT 42

Mastering the technical art behind captivating performances.

DIRECTING COLLABORATIVE THEATRE 44

Guiding creative teams to produce impactful theatrical works.

SCRIPT WRITING FOR BEGINNERS 45

Nurturing new voices in the art of writing for the stage.

SYF DRAMA BOOT CAMPS 43

Intensive training for Singapore Youth Festival excellence.

YEAR LONG CCA PROGRAMS 46

A full-year journey in drama, honing skills and showcasing talent.

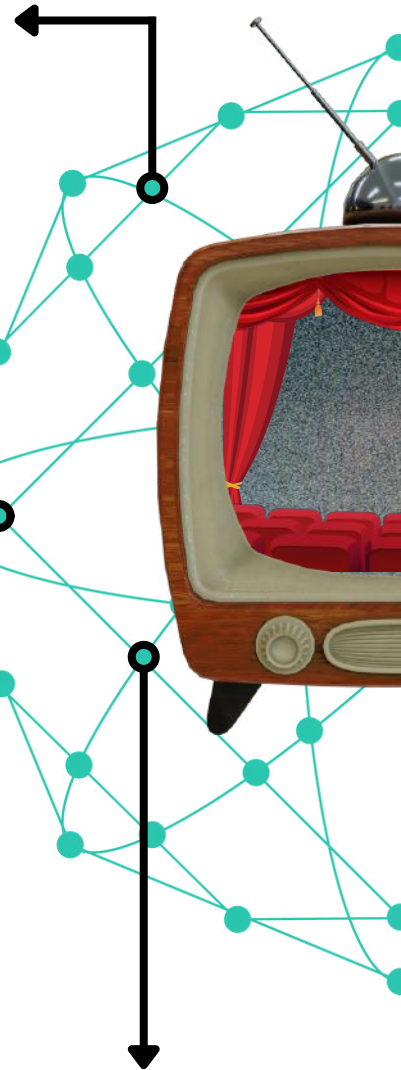
SCHOOL ASSEMBLY SHOWS

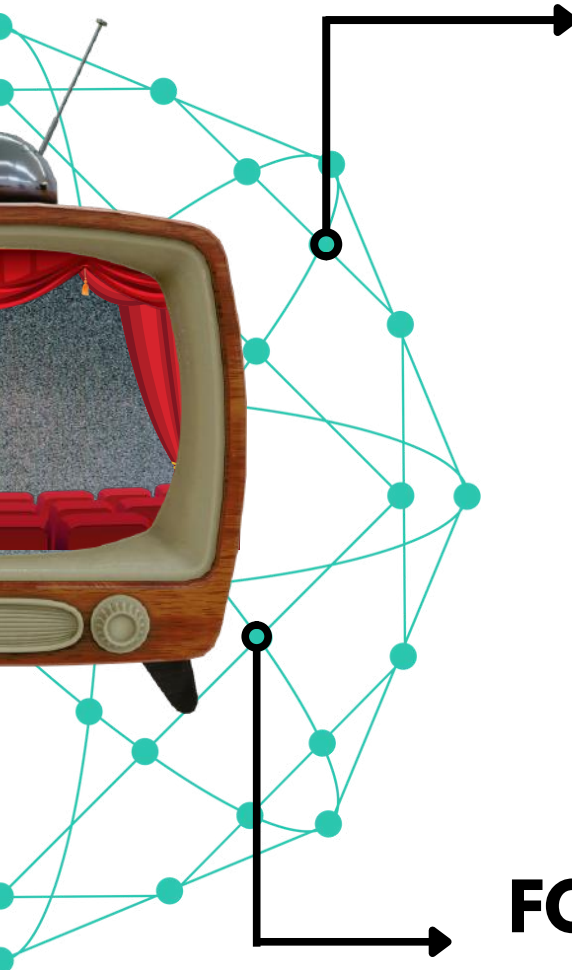
TIDAL WAVES 22

Addressing mental wellness through a powerful interactive and engaging performance.

CLICKBAIT 23

Unveiling the dangers of cyber wellness in a thought-provoking interactive performance.





DRAMA IN ENGLISH / LITERATURE PROGRAMS

DRAMA 101: DRAMA FOR BEGINNERS 28

Introducing the basics of drama to spark passion and creativity.

DIGITAL STORYTELLING 29

Merging technology and narrative to create modern digital performances.

ADAPTING SHORT STORIES FOR STAGE 31

Transforming literary works into engaging stage performances.

PLAYBUILDING THROUGH APPLIED PERFORMANCE 32

Crafting original plays through collaborative creative processes.

APPLIED DRAMA & COMMUNICATION 33

Using drama as a tool for effective communication and expression.

FOR CCE & LEADERSHIP

FORUM THEATRE WORKSHOPS 36

Engaging students in interactive drama to explore social issues.

DIGITAL CAMPAIGN BUILDING FOR GOOD 37

Empowering students to create impactful digital campaigns through drama.

SKM FRIENDS OF SINGA AMBASSADORSHIP 38

Nurturing ambassadors of kindness within our community.

LEADERSHIP ODYSSEY 39

Developing leadership skills through creative and dramatic exploration.

A group of students and adults are performing on a stage. The students are wearing school uniforms (white shirts and dark skirts). One student is kneeling in the foreground. An older man in a colorful patterned shirt is also performing. A woman in a vibrant, colorful outfit is dancing. The background features a wall with a patterned wallpaper and a window. The stage is lit with purple and blue lights. A decorative graphic of several overlapping, rounded rectangular lines in shades of green, orange, and yellow is positioned to the left of the text.

SIGNATURE PROGRAMMES

For close to two decades, inwardBOUND has specialised in crafting heartfelt festivals and memorable musicals for schools based on each organisation's individual needs.



"Thank you for turning my dreams and visions into reality. You have been a big part of my journey as an educator, helping me to bring to fruition what I believe in and how I want to make a difference, and I am grateful for it."

—Principal, Ms Sandra Gwee, Huayi Secondary School



Hua Yi Secondary School, *Cherish* (2024), NUS University Cultural Centre Theatre



SIGNATURE PROGRAMME



Bespoke Musicals

CELEBRATING THE IMPORTANT MILESTONES TOGETHER

National Junior College, *The National Dream* (2018), Esplanade Main Theatre

Celebrate your school's milestones
through our customised productions.



CHIJ St. Joseph's Convent, *Sound of Music* (Year), Republic Polytechnic Theatre

With a deep commitment to community, heritage and arts education, we have created and produced more than 200 productions.

From creative concept, planning, scriptwriting, training for students to final production needs, our team of arts and drama consultants will guide you through the process every step of the way, from planning and conceptualisation to training students in drama and finally to production.

STAGE YOUR MUSICALS WITH US

"The recent musical by Hua Yi Secondary School was not just a display of talent but a profound expression of empathy. Productions like this can greatly contribute to the ForwardSG movement..."

—Professional Playwright's Review,
Hua Yi Secondary School (2024)

"The students learnt so much by putting this production together and had fun doing it. The professionalism and innovativeness of the show really impressed us."

—Teacher's Review,
Mee Toh School (2024)



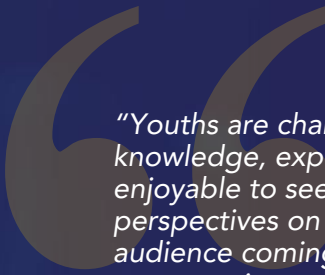
North Vista Secondary School, *Dreams* (Year), Drama Centre Theatre

**Contact Us to find out more about
our Production Staging Services**

Email enquiry@inwardbound.com.sg

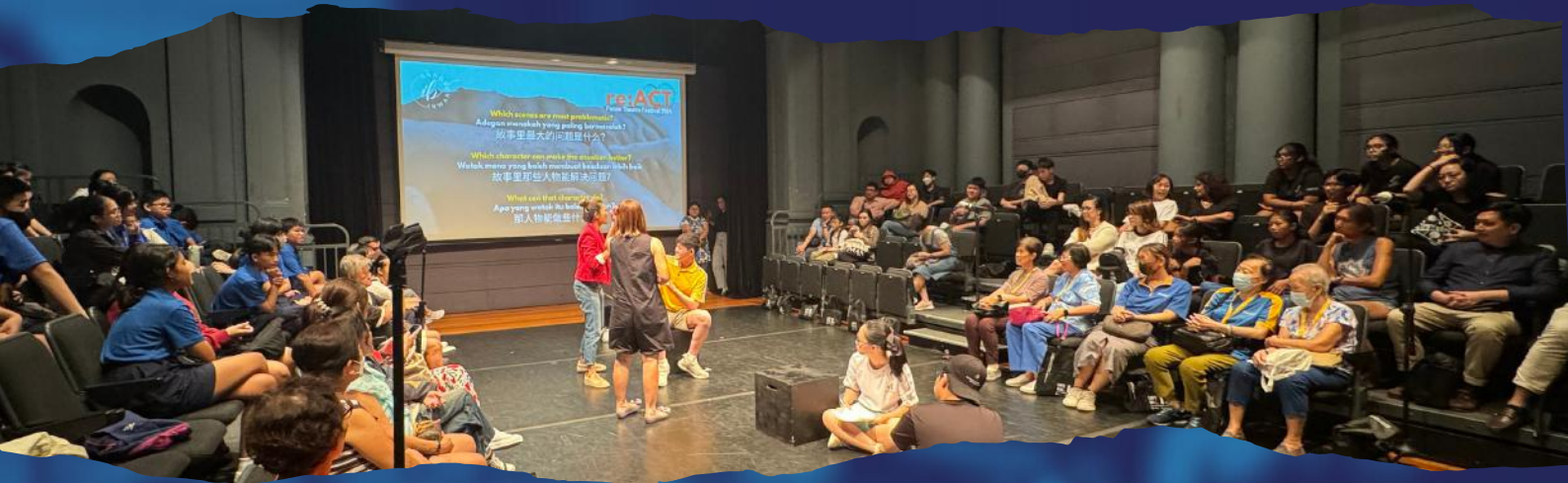


SIGNATURE PROGRAMME



"Youths are changemakers, and the seniors have a wealth of knowledge, experience and wisdom to share. It was really enjoyable to see everyone come forward and see different perspectives on different events. I enjoyed watching the audience coming forward to act on their ideas. Some were very creative and I learnt a lot from them too."

—Audience Member, re:ACT Festival 2024



re:ACT Changemaker Festival

A GRASSROOTS FORUM THEATRE FESTIVAL

Sponsored By



inwardBOUND's re:ACT 2025 addresses the United Nations (UN) Sustainable Development Goals, a blueprint to achieve a better and more sustainable future for all.



Every student is capable of thinking critically and enacting change through the arts.



re:ACT Forum Theatre Festival (2024)

Our Forum Theatre programmes facilitate discussions between students, teachers, and even parents, to explore differing perspectives, and to find creative solutions to modern problems. Participants use Forum Theatre to examine possible paths, unpack problems and rehearse solutions to social issues of their choice. This is a form of rehearsal for life.

This year, with re:ACT being mainly sponsored by the NAC stART Fund and Marina Bay Sands Singapore, we are going into the community! Students will be trained to use forum theatre to devise and present their short plays in Active Ageing Centres around Singapore. At re:ACT, every spectator is an actor, who thinks and acts for him/herself to create change.

Students will learn and apply forum theatre to serve the elderly community in Singapore through this Values-in-Action Experience.

INTERGENERATIONAL CONNECTION FORUM THEATRE VALUES-IN-ACTION EXPERIENCE

Training & Performance Dates

- Students will be trained in forum theatre
- They will create and rehearse a short forum drama for seniors.
- They will be linked with an Active Ageing Centre in Singapore for VIA.
- They will go down to perform, facilitate and interact with seniors.

Programme Cost

Please enquire with us to find out more about our exclusive packages

Exclusive School Package

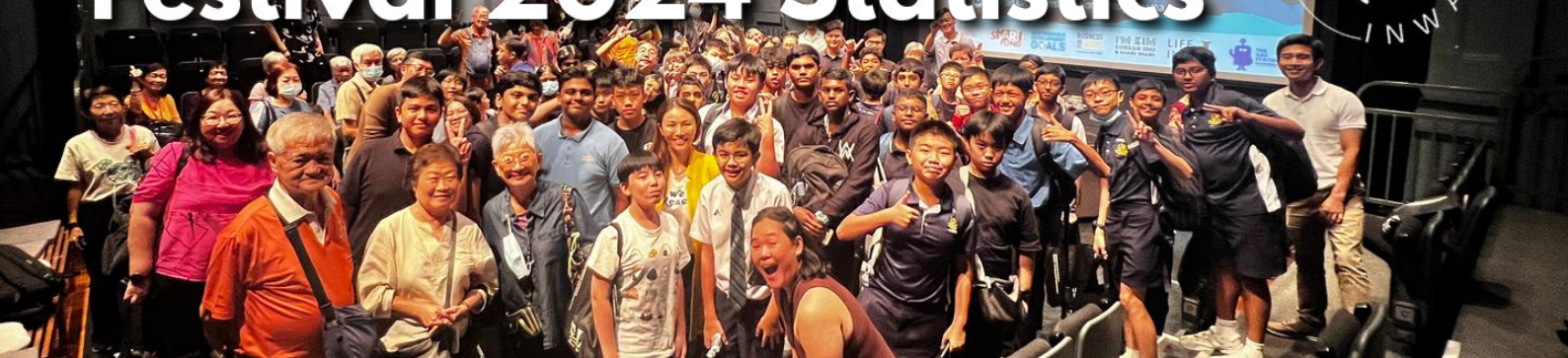
- 50% NAC-AEP Subsidy for the Programme

Book Now!

Email enquiry@inwardbound.com.sg

re:ACT Changemaker Festival 2024 Statistics

re:ACT Forum Theatre Festival 2024
FOLLOW US ON SOCIAL MEDIA
@rebound.sg



97%

of audience members reported being very engaged and felt that the issues presented were very relevant

93%



of audience members want to participate in re:ACT again



96%

of audience members rated the issues presented in the shows as very relevant

9



eldercare centres (and growing) that have worked with participating schools

Extremely educational, the problems and scenes presented were very realistic. It really made me think about how to address these issues that we face on a daily basis as a community together.

—Elderly Audience

www.inwardbound.com.sg
@inwardboundsg

The topics are very relevant and it's good that you bring younger people in to understand what is happening and for seniors to consider what they need to do next and prioritise the time they have.

Makes you think.

—Adult Caregiver Audience

www.inwardbound.com.sg
@inwardboundsg

The performances gave me a better understanding of some current issues pertaining to an aged society. With re:ACT, the students who have to work with the elder-care centres can understand issues faced by the elder folks. On the other hand, people should appreciate the limitations and hardships of caregivers. The audience involvement in the shows may have some meaningful solutions to certain situations/ issues.

—Elderly Audience

www.inwardbound.com.sg
@inwardboundsg

很有教育性，戏中的题目和场景非常现实。真的让我们多想想如何一起解决这些日常生活中常遇见的问题。

—乐龄观众

www.inwardbound.com.sg
@inwardboundsg

It is very good that re:ACT puts across life issues faced by our aging population and their care givers. Hopefully it will also prepare our youths to face such challenges in the future.

—Caregiver Audience

www.inwardbound.com.sg
@inwardboundsg

The issues covered are real and relatable to seniors. Nice and interactive. The students are authentic in their acting. Some of the audience members could have witnessed or gone through the challenges at home.

—Caregiver Audience

www.inwardbound.com.sg
@inwardboundsg

Today I feel great. This group of old folks approached me to take picture with them.

—Student Actor

www.inwardbound.com.sg
@inwardboundsg

As a caregiver, I did not know much about Lasting Power of Attorney certification, now we learn a lot more about it.

—Adult Caregiver Audience

www.inwardbound.com.sg
@inwardboundsg

I learnt that even though growing older can be difficult, there are many ways to make senior citizens' lives easier. When I feel that my relatives are willing to talk about these issues, I will guide them along slowly so that all of us will not be to overwhelmed by all the processes.

—Student Actor

www.inwardbound.com.sg
@inwardboundsg

There are many solutions to a problem and we should always chose the calmest way to solve it. Through the production, I discovered the different perspectives of caregivers and the elderly, and to be more mindful of other's emotions and experiences.

—Student Audience

www.inwardbound.com.sg
@inwardboundsg

I learnt that both elderly and caregivers both have it difficult. I am going to spend more time with my guardian.

—Student Audience

www.inwardbound.com.sg
@inwardboundsg

I learnt about being aware of the needs of the elderly and things that we can do about it in an empathetic way. It presents a lot of issues that are relevant to everyone and how choose on how to approach the situation the best way we can.

—Adult Audience

www.inwardbound.com.sg
@inwardboundsg

Beautiful performance. Thought and emotion invoking. It was eye-opening to talk about the stigma and dislike that the elderly have towards talking about death. Topics such as difficulty of caring for elderly with illnesses, and abuse of elderly due to frustration are extremely relevant and urgent. I will be more patient with elderly and try to talk and plan for my future/before death.

—Student Audience

www.inwardbound.com.sg
@inwardboundsg

I learnt that even though growing older can be difficult, there are many ways to make senior citizens' lives easier. When I feel that my relatives are willing to talk about these issues, I will guide them along slowly so that all of us will not be to overwhelmed by all the processes.

—Student Audience

www.inwardbound.com.sg
@inwardboundsg

This production taught me that communication is very important and that family comes first. Fantastic show. I recommend to have this across the island for more people to appreciate.

—Elderly Audience

www.inwardbound.com.sg
@inwardboundsg

Issues such as elder care and navigating family relationships are very complex and need a lot of careful planning and thought to process. After watching this production, I'm going to be more active in my family.

—Student Audience

www.inwardbound.com.sg
@inwardboundsg



SIGNATURE PROGRAMME

"The wide range of online and hybrid learning modules on offer have revolutionised the way we introduce interdisciplinarity among different art forms in the classroom. My students have especially enjoyed the film, traditional and jazz dance, and visual arts modules. They really enjoyed showcasing to the level on the platform."

—Secondary School Teacher

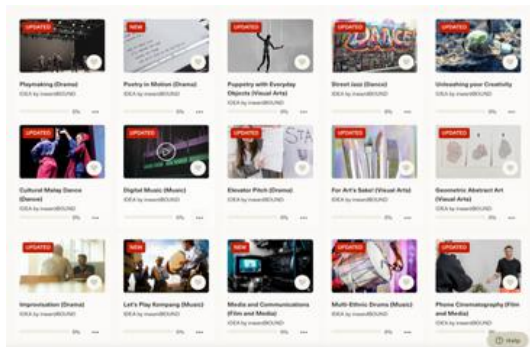
I D E A
by inwardBOUND

I.D.E.A. Festival

INTERDISCIPLINARY EXPOSURE TO THE ARTS



All of life is problem-solving. Students need creative problem-solving skills to overcome complex challenges.



(The I.D.E.A. Micro-Learning Platform)

inwardBOUND, with support from the National Arts Council Singapore (NAC), has created the Inter-Disciplinary Exposure to the Arts, or IDEA that perfectly blends online self-directed and face-to-face learning through creative problem-solving using Arts as the melding tool.

Incorporating genres like Dance, Music, Film and Theatre onto a hybrid platform, melding Face to Face learning with online programs, youths will enjoy varied programs from Dance to Visual Arts, from Theatre to Traditional Music, all housed not just in one venue, but on one online platform. Re-define the learning experience with online tools (such as micro-learning platforms) where integrated edtech will support intended learning outcomes.

LEARN A WIDE RANGE OF INTERDISCIPLINARY ARTS SKILLS AT YOUR FINGERTIPS

Advanced by technology, our hybrid excursion/ workshop/ performance provides:

- **Interdisciplinary Exposure:** Curated videos by local artists across various disciplines help students gain knowledge and skills before the event, enhanced by online gamification and quizzes.
- **Social Function Group Chat:** Participants from different classes upload rehearsal progress via photos and videos, allowing audiences to view and comment.
- **Influencer Boards:** Peer evaluation available on-demand, 24/7.

Programme Cost

Please enquire with us to find out more about our exclusive packages.

Exclusive School Package

- 50% NAC-AEP Subsidy for the Programme

Book Now!

Email enquiry@inwardbound.com.sg

The actors/facilitators are very capable and were able to lead the students confidently, our students were engaged throughout the entire show. The show was very interactive, students participated in the decision-making process, empowered to be up standers. Their voices are heard and they learn from one another on such an important topic. Students were also very captivated by the relatable storyline. Thank you. It was the talk of the town for that week!!

—Teacher's Comments on our Assembly Shows



ASSEMBLY SHOWS

All our Assembly Shows are an interactive forum theatre experience that offers students the opportunity to embody good citizenry, voice their ideas in a safe environment and enact change.

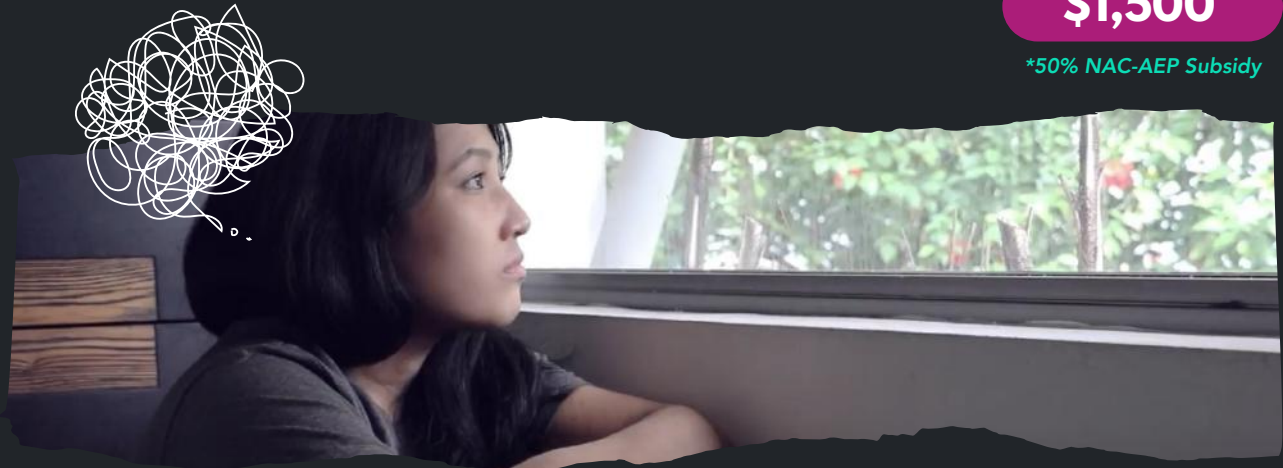
TIDAL WAVES



Tidal Waves is an interactive short film depicting the life of Denise, a teenage girl living with depression. Denise deals with the lack of support provided by her family and friends. She tries to break down her mother and grandmother's pre-conceived notions about depression. They call her lazy and useless when at times, she is simply unable to function. She explains that depression is a disease like any other disease which needs to be treated and certainly, that there is no shame in seeking help. Tidal Waves , supported by the **National Arts Council**, explores the importance of support from friends and family, and also seeking mental health professionals who are equipped to help.

\$1,500*

**50% NAC-AEP Subsidy*



SECONDARY & JC ASSEMBLY SHOWS

CLICKBAIT



Michelle Mok and Brandon Hoe are social media influencers whose friendship is tested when a dangerous YouTube challenge goes wrong. As tensions rise and secrets are spread, their classmates are drawn into a web of deceit. This forum theatre show explores the impact of social media on trust and friendships, challenging students to reflect on their online behavior. In Collaboration with Singapore Kindness Movement, this interactive forum theatre assembly show examines the themes of inclusivity and cyber-wellness. Emphasising the importance of integrity and mutual understanding, this show focuses on cultivating a safe cyber space, developing healthy cyber behaviour, and nurturing active citizenry in students.

\$1,400[^]

[^] OR Free with Terms & Conditions



LIVE FORUM THEATRE EXPERIENCE

Engage your students with our interactive assembly shows, where we use tools like Mentimeter for real-time audience feedback and forum theatre for immersive participation. Our performances tackle relatable topics that resonate with students' everyday lives, making each show both impactful and engaging.

Limited Shows Available

Please reach out to us at enquiry@inwardbound.com.sg on your choice of dates.

Venue

School Hall / Auditorium OR Digital Format

Duration

40 minutes- 1 hour

Depending on Schools' Needs

Comparative Overview of our Assembly Shows

| | TIDAL WAVES | DECEIT Singapore Kindness Movement |
|-----------------|-------------------------|--|
| THEME | Mental Wellness | Neighbourliness and Cyber Wellness |
| AUDIENCE | Secondary Schools & JCs | Secondary Schools & JCs |
| PRICE | \$1,500* | \$1,440^ |

**Eligible for 50% NAC-AEP Subsidy
^OR Free with Terms and Conditions*

Why Choose Us?



INTERACTIVE

Our Assembly Shows are incredibly captivating, allowing students to step on stage and take charge of their ideas.



RELEVANT

The themes discussed are relevant to current social issues, empowering students to address challenges with empathy and courage.



EFFECTIVE

For almost a decade, we've hosted Assembly shows with over 90% of the audience recalling key concepts from the performances.

ATTENTION ALL
LITERATURE TEACHERS!

A NEW PACKAGE
JUST FOR YOU!

Choosing a New Lit Text is as Easy as 1, 2, 3...

Transitioning to a new literature text comes with its perks! Our latest literature programmes bundle features a short Literature Masterclass with Playwright & NTU English Professor, Dr. Geraldine Song, tailored for your students!

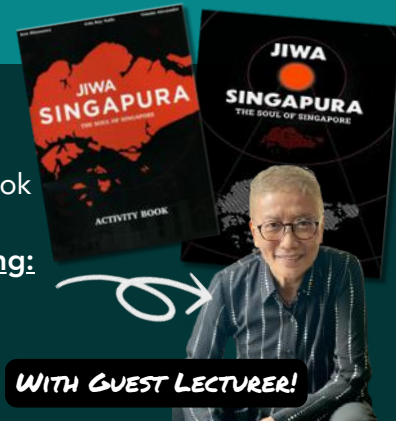
Here's what you will get when you choose *Jiwa Singapura*, a new Singapore play by Dr. Geraldine Song, as your Lower Secondary Literature text!

Books Available for Purchase:

- *Jiwa Singapura*
- *Jiwa Singapura* Teaching Guide/Activity Book

Companion Programmes Available for Booking:

- Playwriting for Beginners
- Playbuilding towards Performance
- Adapting Short Stories for the Stage



WITH GUEST LECTURER!

1

2

3

SG60 *Jiwa Singapura* TikTok Competition in collaboration with Nanyang Technological University (NTU) Singapore

- Students are invited to submit their video entries for this competition. For more information, drop us an email.

Watch *Jiwa Singapura: The Production* (2025)

- To be staged in **October 2025** by inwardBOUND & Nanyang Technological University, Singapore.
- More details to be announced soon. Drop us an email to subscribe to our mailing list and to secure your tickets for your students.

Book Now!

Email enquiry@inwardbound.com.sg



DRAMA IN ENGLISH & LITERATURE PROGRAMMES

Our Short-Term Applied Learning Programmes are holistic programmes tailored to students' English and Literature education. By providing a multifaceted learning experience, these programmes go beyond the confines of these academic subjects, offering a dynamic platform for students to develop essential life skills. Incorporating processes such as Design Thinking into Drama, students are empowered to become well-rounded individuals equipped with the language skills, builds confidence and harnesses their creativity.

Looking for Other Customised Programmes?

We can create bespoke Arts Education experiences just for you.
Email us for a consultation at enquiry@inwardbound.com.sg



AVAILABLE PROGRAMMES

DRAMA FOR BEGINNERS
APPLIED DRAMA & COMMUNICATION PROGRAMME
PLAYBUILDING THROUGH APPLIED PERFORMANCE
ADAPTING SHORT STORIES FOR THE STAGE
DIGITAL STORYTELLING

Programme ID: AEP0520644

Drama 101 - Drama for Beginners

Drama for Beginners provides students with imagination-expanding exercises in Pantomime, Voice and Improvisations that are adaptable to School Values or any chosen context.

Both Improvisation and structured dramatic role-play is used as the central teaching method. Students can discover their imaginative potential through these forms and practice communication in an active, dramatic and immediate context. They can play out and reflect upon issues that are beyond the typical classroom experience.

| | |
|-------------------------------|---|
| Target Audience | Primary, Secondary Students |
| Recommended Class Size | 20 - 40 Students |
| Programme Cost | Customisable depending on the number of students. Please enquire with us. |
| Recommended Duration | 8 sessions x 1.5 Hours* |

**Hours and sessions can be tailored to your school's needs.*

NAC-AEP Funding

This programme is approved by the Tote Board Arts Grant and is eligible for 50% funding.

Schools may use the grant to subsidise the purchase of this programme.



"inwardBOUND's longstanding track record in arts education speaks for itself. Our Secondary 2 students were really engaged in the Drama for Beginners and Applied Drama for English curriculum programmes. We look forward to engaging them again and hope that more schools will choose their programmes too."

—Teacher's Review

Book Now!

Email enquiry@inwardbound.com.sg

Programme ID: AEP0520786

Digital Storytelling

Students will be trained to develop writing, linguistic and presentation skills, leveraging on ICT as a teaching tool to promote Self-Directed Learning.

Students will work towards creating a 3-5 minute video end product based on a given theme. Here, students are given the platform to organise ideas for specific writing purpose and use language to enhance fluency and expressiveness in their presentation.

Their scripts will be edited and proof-read, applying techniques of good presentation skills in their story-telling. Finally, their videos will be refined, finalised for their presentation to review.

| | |
|-------------------------------|---|
| Target Audience | Secondary School Students |
| Recommended Class Size | 20 - 40 Students |
| Programme Cost | Customisable depending on the number of students. Please enquire with us. |
| Recommended Duration | 4 sessions x 2.5 Hours* |

**Hours and sessions can be tailored to your school's needs.*

NAC-AEP Funding

This programme is approved by the Tote Board Arts Grant and is eligible for 50% funding.

Schools may use the grant to subsidise the purchase of this programme.

Email enquiry@inwardbound.com.sg

Book Now!

This was an amazing experience that improved my writing, language, and presentation skills. Creating a 3-5 minute video and refining scripts was challenging but rewarding. I highly recommend it to anyone looking to enhance their storytelling and communication skills!

—Secondary School Student

Literature Texts and Companion Programmes

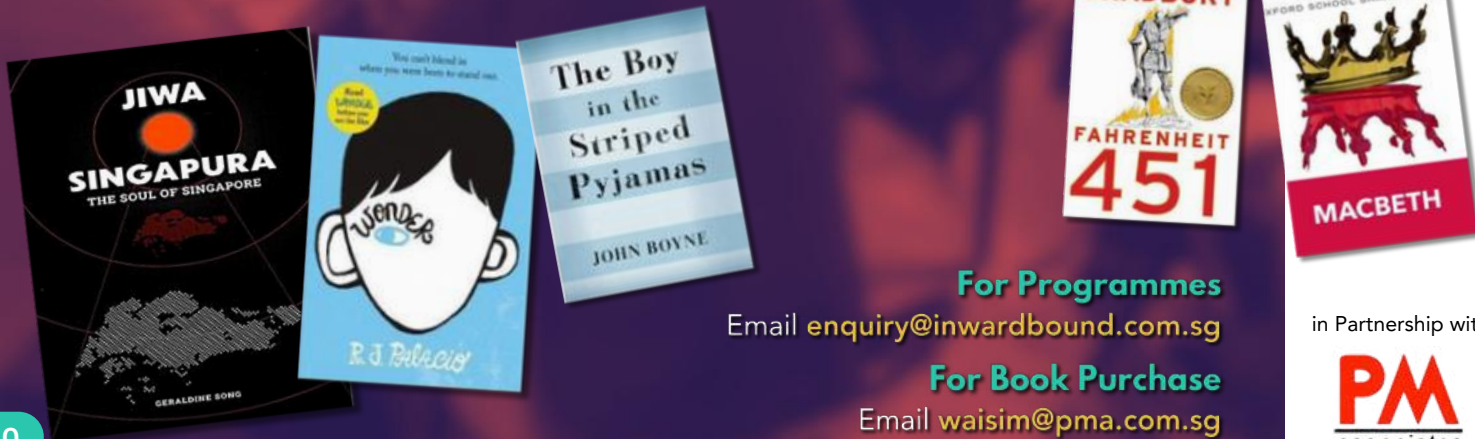
More than just a Book, we offer the Experience.

As teachers ourselves, we understand how important it is to choose books that resonate with our students. We also know that mastering the text and the English Language is best accomplished through interactive programmes and embodied learning.

With 20 years of experience in using Applied Drama in the Language & Literature classroom, inwardBOUND offers **3 main accompanying programmes** for English and Literature teachers to consider when building the curricula for your students:

- Script Writing for Beginners (page)
- Playbuilding towards Performance (page)
- From Page to Stage: Adapting Short Stories for the Stage (page)

Using the text as stimulus, these programmes will offer a comprehensive and interactive learning experience that will teach your students to apply key language and literary concepts beyond the classroom.



For Programmes

Email enquiry@inwardbound.com.sg

For Book Purchase

Email waisim@pma.com.sg

in Partnership with

PM
associates

Adapting Short Stories for the Stage

Discover the art of transforming prose into powerful performance in this dynamic course. 'Adapting Short Stories for the Stage' offers a deep dive into the creative process of reimagining written narratives for live theatre. Your students will learn to analyse the structure, themes, and characters of short stories, and explore techniques for translating these elements into compelling stage scripts. Whether they're writers or directors, this course equips them with the skills to bring stories to life in a whole new way, making them resonate with audiences on a visceral level.

The course also encourages your students to engage in collaborative workshops, where they will experiment with different staging and dramatic techniques. Through hands-on activities and peer feedback, they will refine their adaptations, gaining confidence and proficiency in crafting stage-worthy scripts that stay true to the essence of the original stories while adding their own creative flair.



"An engaging and highly informative program that offers valuable insights into drama and playwriting. It's a source of joy and fun, providing a comprehensive understanding of the craft. The instructor is highly experienced and knowledgeable in this field, making the experience truly fantastic."

—English & Drama CCA Teacher I/C, Hwa Chong Institution (High School)

| | |
|-------------------------------|---|
| Target Audience | Secondary School, JC/CI Students |
| Recommended Class Size | 20 - 40 Students |
| Programme Cost | Customisable depending on the number of students. Please enquire with us. |
| Recommended Duration | 5 sessions x 1.5 Hours* |

**Hours and sessions can be tailored to your school's needs.*

Book Now!

Email enquiry@inwardbound.com.sg

Programme ID: AEP0520645

Playbuilding Towards Performance

Students will create a dramatised performance using an allocated text as the stimulus. Students will develop speech skills, understand the fundamental elements of drama and discover their inventiveness and ingenuity through the exposure to literary devices such as metaphors and imagery.

Students will also be directed to consider different elements of drama that aid in creating an effective play. Workshops will also focus on actors using their bodies in the acting space. Students learn non-verbal communication through use of their bodies as signs and images. Workshops will focus on production creation and the construction of an ensemble with a united sense of rhythm and flow.

| | |
|-------------------------------|---|
| Target Audience | Upper Primary, Lower Secondary, Upper Secondary, JC/CI |
| Recommended Class Size | 20 - 40 Students |
| Programme Cost | Customisable depending on the number of students. Please enquire with us. |
| Recommended Duration | 8 sessions x 1.5 Hours* |

**Hours and sessions can be tailored to your school's needs.*

NAC-AEP Funding

This programme is approved by the Tote Board Arts Grant and is eligible for 50% funding.

Schools may use the grant to subsidise the purchase of this programme.

Book Now!
Email enquiry@inwardbound.com.sg



"All I can say is that I can't wait to participate in more programs like this in the future. Furthermore, I will be able to enhance my ability as a person to have good communication with others. The programme gave me and my group mates a chance to show our creative and group potential."

—Secondary School Student

Programme ID: AEP0520786

Applied Drama & Communication Programme

Using interdisciplinary approaches, this programme will teach students the applied arts by harnessing technology to learn about effective communication. Through a holistic programme that covers constructing and delivering presentations, students will develop vocal prowess, engage and captivate audiences through compelling speeches, and craft structured responses.

- **Sec 1:** Pitch Perfect
- **Sec 2:** Unleash your Inner TED Speaker
- **Sec 3:** Cause Campaigners Academy
- **Sec 4:** Oral Exam Mastery: Response and Interaction Skills

| | |
|-------------------------------|--|
| Target Audience | Secondary School Students |
| Recommended Class Size | 20 - 40 Students |
| Programme Cost | Customisable depending on the number of students. Please enquire with us. |
| Recommended Duration | 6 sessions x 2.5 Hours* |

**Hours and sessions can be tailored to your school's needs.*

NAC-AEP Funding

This programme is approved by the Tote Board Arts Grant and is eligible for 50% funding.

Schools may use the grant to subsidise the purchase of this programme.

Book Now!
Email enquiry@inwardbound.com.sg



"The methodology employed in the teaching of this programme was fresh and innovative. Our students learnt key speaking and critical thinking skills while having fun and collaborating with one another."

—Teacher's Review



At inwardBOUND, we have faith in the arts' transformative influence on young minds, nurturing the future leaders. Our tailored educational programs aim to cultivate resilient traits in students, fostering critical thinking and proactive leadership in society. Choose from a variety of leadership and Character Education-focused programs to initiate your students' lifelong leadership development journey today!

Book Now!

Still unsure about which programme to choose?

Contact us for a consultation at enquiry@inwardbound.com.sg



CCE & LEADERSHIP PROGRAMMES




Forum Theatre Workshops

Our tailored forum theatre workshops provide students with the opportunity to develop empathy and creative problem-solving skills by leveraging on forum theatre as a teaching tool to promote taking ownership of issues.

This programme will incorporate Design Thinking tools into the idea generation for solving a problem. Students will be able to articulate ideas and apply the skills in critical thinking. They will also roleplay in shaping the solution to the problem and propose ideas and take action towards better solutions.

| | |
|-------------------------------|---|
| Target Audience | Upper Primary, Lower Secondary, Upper Secondary, JC/CI |
| Recommended Class Size | 20 - 40 Students |
| Programme Cost | Customisable depending on the number of students. Please enquire with us. |
| Recommended Duration | 4 sessions x 3 Hours* |

**Hours and sessions can be tailored to your school's needs.*



"I learnt to be more confident and creative, and I learnt to look at others perspectives, it provided insights on different things."

—Secondary School Student's Review

Book Now!

Email enquiry@inwardbound.com.sg

Campaign Building for Good

How can drama create an emotional connection with our audience? What strategies ensure our message resonates across diverse communities?

Empower your students to make a positive impact with 'Campaign Building for Good', a course focused on teaching the principles and strategies of designing effective social campaigns. Your students will learn to craft campaigns that raise awareness, inspire action, and drive meaningful change. Incorporating elements of applied drama, the course introduces role-play, improvisation, and storytelling as tools for advocacy, helping students create emotionally resonant and impactful campaigns.

Through interactive workshops and hands-on projects, your students will work collaboratively to design and present social campaigns, integrating drama techniques to amplify their message. By the end of the course, your students will be equipped to build campaigns that inspire communities to take action.

| | |
|-------------------------------|---|
| Target Audience | Secondary, JC/CI |
| Recommended Class Size | 20 - 40 Students |
| Programme Cost | Customisable depending on the number of students. Please enquire with us. |
| Recommended Duration | 4 sessions x 3 Hours* |

**Hours and sessions can be tailored to your school's needs.*



"I learnt to be more confident and creative, and I learnt to look at others perspectives, it provided insights on different things."

—Secondary School Student's Review

Book Now!

Email enquiry@inwardbound.com.sg

SKM Friends of Singa Ambassadorship

Introduced in 1990, the Friend of Singa (FOS) programme began with the purpose of cultivating desirable behaviours and values in students. FOS Secondary programme is a year-long programme that is open to secondary schools, special education schools, madrasahs and international schools.

FOS started out in schools to champion kindness in the school community. Students from participating schools are tasked to identify issues and they must implement a kindness campaign in school to promote kindness within their school and community. It is intended that at the end of the campaign, participants will recognise the importance of their role in informing and encouraging desired behaviours therefore making a difference.

| | |
|------------------------|-------------------------------|
| Target Audience | Primary School Students |
| Programme Cost | Free. Please enquire with us. |

In Partnership with



Book Now!

Email enquiry@inwardbound.com.sg



"I learnt that it is not enough to know how to be kind. I must put it into action. This programme gave me the chance to try out my solutions with others and I feel more ready to share my ideas with others. I want to make the world a kinder place!"

—Secondary School Student's Review

Leadership Odyssey Camp

A 3-Day Orientation Camp to Build Leaders of Tomorrow through Innovation and Creativity!

Using the Leadership Challenge Model, students will embark on a camp that builds leadership potential to face challenges, encouraging change-makers who envision their future by actively contributing to it.

Students will undergo activities that introduce and develop experiential learning skills, design thinking applications, forum theatre skills, interpersonal and collaboration techniques.

| | |
|-------------------------------|---|
| Target Audience | Secondary / JC Students |
| Recommended Class Size | 20 - 40 Students |
| Programme Cost | Customisable depending on the number of students. Please enquire with us. |
| Recommended Duration | 3 Days |

**Hours and sessions can be tailored to your school's needs.*



"I learnt to be more confident and creative, and I learnt to look at others perspectives, it provided insights on different things."

—Secondary School Student's Review

Book Now!

Email enquiry@inwardbound.com.sg





DRAMA CCA & ENRICHMENT

Since 2005, we have garnered over **120 Certificates of Distinctions / Gold with Honours**. Our students have been trained in a wide variety of theatre crafts including **puppetry, dance, musical theatre, physical theatre**, etc. With our **20 years of service in arts education**, all our CCA and Drama Enrichment curricula employ a holistic approach to developing your students in all aspects of the dramatic arts.

Using a **'total approach'** to theatre making and production, our team will provide for all your training and production needs, tailored specifically to you.

This is our heritage. This is our guarantee.





"I was very impressed with the teamwork from the company. Everyone came down to help in pushing and motivating the students. Everything was delivered; from sourcing of production to organizing and providing help for teachers. Very surprising for a drama company. Really trust the professionalism..."

—English Teacher,
Jurongville
Secondary School

Programme ID: AEP0520784

Stagecraft

This course serves as an introduction to Technical Theatre, Stagecraft and production techniques. The course will incorporate lectures, discussions and practical work. This course aims to develop a comprehensive understanding as well as provide practical knowledge of what goes on behind the stage in theatre productions. It provides the basics needed to work in professional theatre.

Students will be introduced to drama through improvisation and dramatic performance as part of the program. Another separate phase of workshop will introduce them to the application of Stagecraft to their performance.

| | |
|-------------------------------|---|
| Target Audience | Middle Primary, Upper Primary, Lower Secondary, Upper Secondary, JC/CI |
| Recommended Class Size | 20 - 40 Students |
| Programme Cost | Customisable depending on the number of students. Please enquire with us. |
| Recommended Duration | 8 sessions x 2.5 Hours* |

**Hours and sessions can be tailored to your school's needs.*

NAC-AEP Funding

This programme is approved by the Tote Board Arts Grant and is eligible for 50% funding.

Schools may use the grant to subsidise the purchase of this programme.

Book Now!

Email enquiry@inwardbound.com.sg

Programme ID: AEP0520786

SYF Drama Boot Camp

Since 2008, inwardBOUND has conducted SYF Boot Camps for the Drama CCA schools we oversee. These Boot Camps are intensive programs designed to familiarise students with the latest SYF standards and introduce them to diverse peer perspectives and performances.

During these sessions, students engage in a variety of workshops, from acting techniques to stagecraft. The aim is not only to hone their craft but also to build a strong sense of camaraderie and teamwork. Participants often leave our Boot Camps with heightened confidence, new skills, and a deeper appreciation for the art of drama.

The Boot Camp will train students in both acting and technical theatre.

| | |
|-------------------------------|---|
| Target Audience | Middle Primary, Upper Primary, Lower Secondary, Upper Secondary, JC/CI |
| Recommended Class Size | 20 - 40 Students |
| Programme Cost | Customisable depending on the number of students. Please enquire with us. |
| Recommended Duration | 8 sessions x 2.5 Hours* |

**Hours and sessions can be tailored to your school's needs.*

NAC-AEP Funding

This programme is approved by the Tote Board Arts Grant and is eligible for 50% funding.

Schools may use the grant to subsidise the purchase of this programme.

Book Now!

Email enquiry@inwardbound.com.sg



"The SYF Boot Camp is a must for Drama CCA students. It brilliantly combines technical skills with creative performance, giving students hands-on experience in Stagecraft and production. It builds teamwork in a way that no other programme can. My students left inspired, confident, and ready for the upcoming SYF. We couldn't have achieved a Distinction otherwise."

—Secondary School HOD & Teacher I/C Review

Programme ID: AEP0520643

Directing Collaborative Theatre

This programme will cover use of stimuli, from text to object to sound and consequently developing into a new piece of work. Using Process Drama to develop values and social emotional learning, this programme teaches students to translate a human experience accurately into terms which can be recognized and understood by students experientially.

Students will be introduced to the nature of collaborative theatre and be exposed to several devices used to generate material for devised theatre. This structure is similar to what many industry professionals use to create performance. Participants will present a mini staging of a devised moment, artist statement and performance (15-20 min) inspired from the stimulus provided.

| | |
|-------------------------------|---|
| Target Audience | Middle Primary, Upper Primary, Lower Secondary, Upper Secondary, JC/CI |
| Recommended Class Size | 20 - 40 Students |
| Programme Cost | Customisable depending on the number of students. Please enquire with us. |
| Recommended Duration | 8 sessions x 3.5 Hours* |

**Hours and sessions can be tailored to your school's needs.*

NAC-AEP Funding

This programme is approved by the Tote Board Arts Grant and is eligible for 50% funding.

Schools may use the grant to subsidise the purchase of this programme.

Book Now!

Email enquiry@inwardbound.com.sg



"The trainers were knowledgeable and professional. Students gained new knowledge in drama and learnt to work together in a team armed with different roles to put up a dramatic piece showcasing original narratives of the school. The showcase was a success."

—CCA Teacher I/C,
Xinmin Secondary
School

Script Writing for Beginners

Unlock the world of theatre with 'Playwriting for Beginners', a course designed to introduce your students to the fundamentals of crafting original plays. This course guides them through the essential elements of playwriting, including character development, dialogue, plot structure, and setting. Your students will learn how to transform their ideas into compelling narratives that can captivate an audience from the stage. Whether they have prior experience or are completely new to the craft, this course provides them with the tools and confidence to start writing their own plays.

Your students will participate in interactive writing exercises and hands-on drama exercises that foster creativity and collaboration. They will have the opportunity to share their work with peers, receive constructive feedback, and revise their scripts.

| | |
|-------------------------------|---|
| Target Audience | Secondary School Students |
| Recommended Class Size | 20 - 40 Students |
| Programme Cost | Customisable depending on the number of students. Please enquire with us. |
| Recommended Duration | 5 sessions x 2.5 Hours* |

**Hours and sessions can be tailored to your school's needs.*



"Taking the 'Script Writing for Beginners' course was a game-changer for me! I came in with just a love for stories and left with the skills and confidence to write my own play. The interactive exercises were fun and engaging, and the feedback from peers really helped me improve. This course doesn't just teach you to write—it helps you find your voice as a playwright. Highly recommended!"

—Secondary School Student's Review

Book Now!

Email enquiry@inwardbound.com.sg



(Kent Ridge Secondary School, SYF Distinction, 2023)

(Hwa Chong Institution, SYF Distinction, 2023)

Year-Long Drama CCA Programme

With a twenty-year legacy in dramatic arts education, inwardBOUND holds the belief that drama possesses the ability to revolutionize the essence of human society - the individual. Through partnerships and collaborations with various stakeholders, we aim to provide a wide range of platforms for creative expression. Our focus is on nurturing young talents to excel in their field, recognizing that they hold the key to the future.

Our Methodology

Integration of Theatre and Activism: We incorporate arts and activism into the curriculum of the CCA. Your students will learn about different art forms and how they can be used to raise awareness about social issues.

We also provide opportunities for your students to collaborate with local artists and activists to understand real-life challenges and apply their creative skills to address them.

6 Reasons to Choose inwardBOUND

01. 20 years of Drama Teaching Experience

02. Wide and Holistic Curriculum from Acting to Technical Theatre

03. Detailed and Future-oriented Planning

04. 4-Year Progressive Development based on LEAPS

05. Well-known for Building a Cohesive CCA Culture based on Excellence

06. Service Learning and Community Impact Oriented

Enquire with Us!

Email enquiry@inwardbound.com.sg

Our Story so far



68 Distinctions

awarded at SYF since 2013 -
that's 1 in 2 of our CCA
schools



> 40,000

participants for our Forum
assembly shows annually



> 4,000

participants for our Drama
programmes annually



20% of Revenue

go to vulnerable communities,
as a raISE Social Enterprise



33 Freelance

artists-educators work with
the inwardBOUND team



7 Programmes

endorsed by NAC-AEP, eligible
for 50% Tote Board Arts Fund



More than 8 out of 10

participants reported positive engagement with our programmes



More than 9 out of 10

participants reported skill development with our programmes

Our School Clients

- Anderson Primary School
- Ahmad Ibrahim Secondary School
- Assumption English School
- Ang Mo Kio Secondary School
- Beatty Secondary School
- Bedok Green Secondary School
- Bedok South Secondary School
- Bedok View Secondary School
- Boon Lay Secondary School
- Broadrick Secondary School
- Catholic High School (Secondary)
- Catholic Junior College
- Cedar Girls' Secondary School
- Chung Cheng High School (Yishun)
- Changkat Changi Secondary School
- CHIJ St. Joseph's Convent
- CHIJ Katong Convent
- CHIJ St. Nicholas Girls' School
- CHIJ St. Theresa's Convent
- Chung Cheng High School (Yishun)
- Clementi Town Secondary School
- Commonwealth Secondary School
- Compassvale Secondary School
- Crescent Girls' School
- Deyi Secondary School
- East Spring Secondary School
- Evergreen Secondary School
- Edgefield Secondary School
- Fajar Secondary School
- Gan Eng Seng School
- Greendale Secondary School
- Guangyang Secondary School
- Hai Sing Catholic School
- Hillgrove Secondary School
- Holy Innocent' High School
- Hua Yi Secondary School
- Hwa Chong Institution
- Hwa Chong International School
- Junyuan Secondary School
- Jurong Pioneer Junior College
- Jurong West Secondary School
- Jurongville Secondary School
- Kent Ridge Secondary School
- Kranji Secondary School
- Kuo Chuan Presbyterian Secondary
- Manjusri Secondary School
- Marsiling Secondary School
- Mee Toh School
- Melbourne Specialist International School
- Methodist Girls' School
- Meridian Secondary School
- Montfort Secondary School
- Nan Hua High School
- National Junior College
- Naval Base Primary School
- Navel Base Secondary School
- New Town Secondary School
- Ngee Ann Secondary School
- North Vista Secondary School
- Raffles Girl's Primary School
- Orchid Park Secondary School
- Pasir Ris Crest Secondary School
- Paris Ris Secondary School
- Paya Lebar Methodist Girls' School
- Princess Elizabeth Primary School
- Peirce Secondary School
- Ping Yi Secondary School
- Presbyterian High School
- Queensway Secondary School
- Queenstown Primary School
- Queenstown Secondary School
- Regent Secondary School
- River Valley High School
- Riverside Secondary School
- Sembawang Secondary School
- Serangoon Garden Secondary School
- St Joseph's Institution
- St. Hilda's Secondary School
- St Margaret's Secondary School
- St. Patrick's School
- Swiss Cottage Secondary
- Tampines Secondary School
- Tanjong Katong Girls' School
- Tanjong Katong Secondary School
- Temasek Secondary School
- Victoria School
- Westspring Secondary School
- Whitley Secondary School
- Westwood Secondary School
- Woodlands Ring Secondary School
- Woodlands Secondary School
- Woodgrove Secondary School
- Xinmin Secondary School
- Yio Chu Kang Secondary School
- Yishu Town Secondary School
- Yusof Ishak Secondary School

Book Now!

Or Schedule a Consultation with us at enquiry@inwardbound.com.sg
or WhatsApp at **+65 9845 1854**

Our Partners & Collaborators



Serving Humanity. Saving Lives



We Are Supported by







TRANSFORMING LIVES THROUGH DRAMA SINCE 2005.



www.inwardbound.com.sg



enquiry@inwardbound.com.sg



[@inwardbound_sg](https://www.instagram.com/inwardbound_sg)



[@inwardbound_sg](https://www.facebook.com/inwardbound_sg)



[@inwardbound_sg](https://www.tiktok.com/@inwardbound_sg)

