



held in the quiet

MILIEU

CATALOGUE OF WORKS

Ollie Marr

Phoebe Deepprose

Hannah Walsh

Bethany Holmes

Hannah Ruth Davies

Alice-Andrea Ewing

Alice Merida Richards

held in the quiet

10th June - 22nd July 2026



MILIEU

HANNAH RUTH DAVIES

Hannah Ruth-Davies was born in 1980, in Cambridge. After completing her art foundation there, she moved to Cornwall, where she did a BA(hons) in Fine Art at Falmouth College of Arts, graduating in 2002.

Her oil paintings explore the theme of reflections, and are inspired by reflections of the Cornish seascape and townscape in cafe windows.



Hannah's work achieves a mysterious atmosphere by using transparent layers of oil paint, built up slowly, so that each layer is still visible on the canvas.

On a glass surface, inside and outside are merged, mixing private and public spaces, and producing strange and surprising areas, where coffee cups and figures float through sea and sky. Images develop to the viewer only slowly, as it in a dream.

Hannah's dreamlike reflections draw the eye in, mesmerizing in their simultaneous sense of movement and calming stillness.

HANNAH RUTH DAVIES

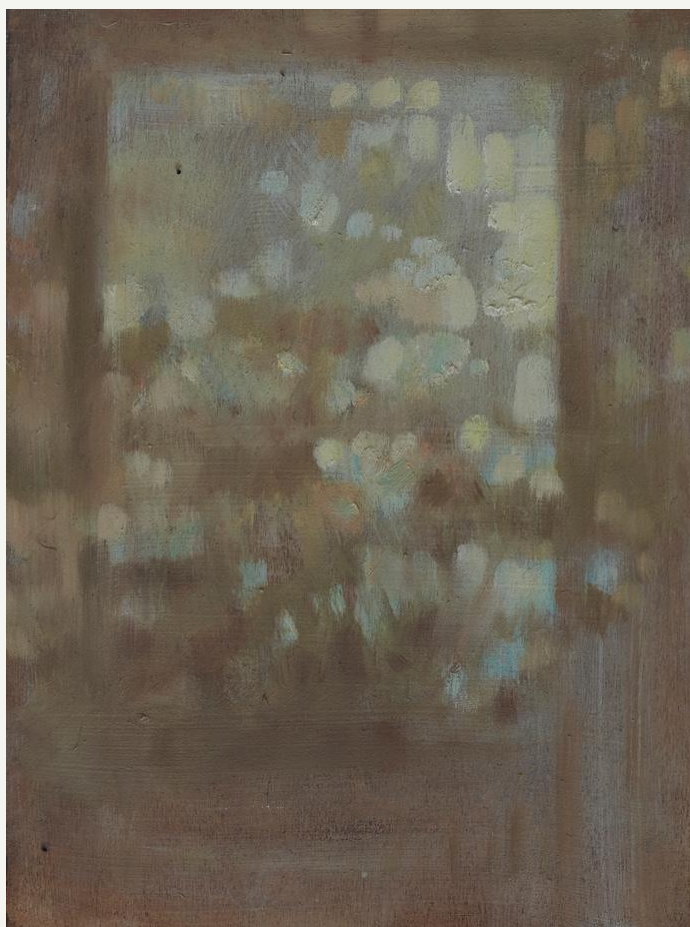


A Door To The Sun ●
Oil on wooden panel
41 x 41 cm
£700

HANNAH RUTH DAVIES

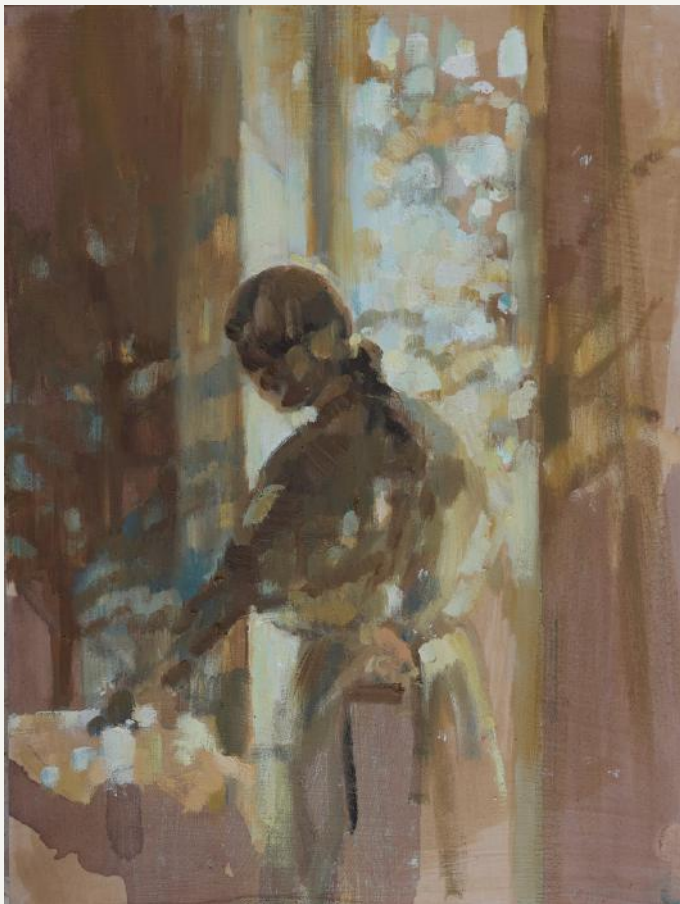


Together ●
Oil on wooden panel
18,5 x 18,5 cm (framed)
15 x 15 cm
£400

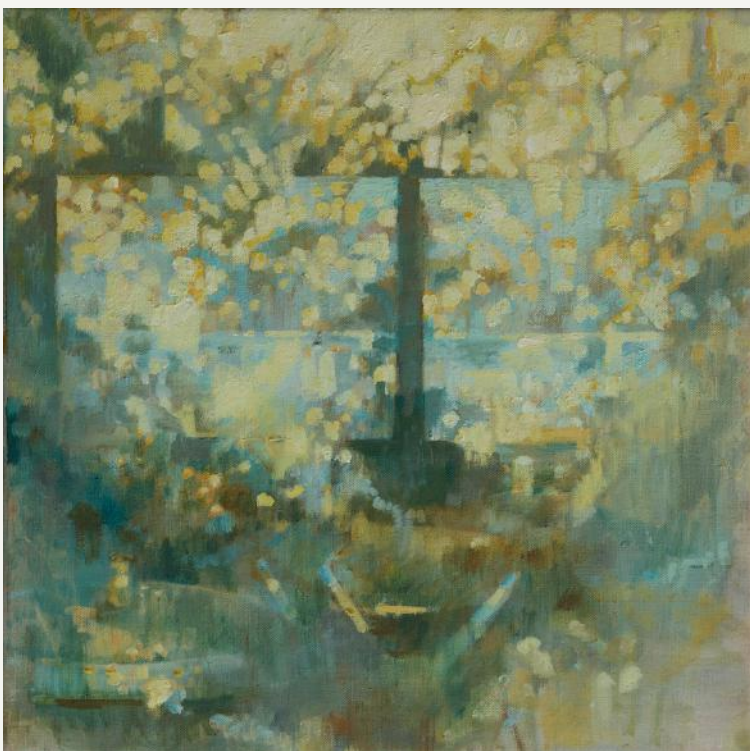


Framed Light
Oil on wooden panel
15 x 20 cm
£400

HANNAH RUTH DAVIES



Covered in Light ●
Oil on wooden panel
30.5 x 23 cm
£400



A Glimpse Through
Oil on canvas
Framed in wooden tray-frame
43 x 43 cm (framed)
£700

HANNAH RUTH DAVIES



Beyond The Window ●
Oil on wooden panel
30.5 x 23 cm
£400



Light Dance Between The Trees ●
Oil on wooden panel
23 x 31.5 cm
£400

HANNAH RUTH DAVIES



Warm Inside ●
Oil on wooden panel
23 x 31 cm
£450

Dance On The Curtain ●
Oil on canvas
61 x 25 cm
£650

HANNAH WALSH

Hannah Walsh is an Aotearoa New Zealand–born artist based in St Ives, working from her studio in Zennor, Cornwall.

Her paintings express an animist view of the natural world, drawing on a deeply intuitive relationship with landscape and light.

Working across oil painting, watercolour and mixed media drawing, her practice is strongly process led and driven by automatic mark-making. She employs a range of tools and techniques to amplify the immediacy of her marks, relinquish conscious control and remove the hand.



Across numerous layers, Walsh builds ‘ecosystems’ from a vocabulary of intuitive gestures informed by close observation, foraging, and drawing.

Smudges, scratches and dispersed marks give rise to subtle atmospheres and spatial impressions, echoing the rural and coastal environments of her upbringing.

With a background in architecture, Walsh embraces shifts in scale and perception to push the work toward abstraction.

Her ethereal paintings weave otherworldly space where energetic movements are visible, and juxtaposed with suggestions of landscape.

HANNAH WALSH



Dawn Lustre ●
Oil on canvas in dark-stained wooden tray frame
107 × 82 cm (framed)
£2200

HANNAH WALSH



Guardians In Blue

Oil on canvas in dark-stained wooden tray frame

107 × 82 cm (framed)

£2200

HANNAH WALSH



River Signal

Oil on canvas in dark-stained wooden tray frame

107 × 82 cm (framed)

£2200

PHOEBE DEEPROSE

Phoebe Deepröse is an artist based in Cornwall. She practises an intuitive and narrative method of painting, rooted in a fascination with story-making.

She explores how imaginings drift and alter between contexts over time, exploring the human and the posthuman through overlapping and merging layers of figures and landscapes.

Different viewers will recognise different imagery within the same piece. This underpins Phoebe's work, as she explores how intricate layers of meaning can be revealed within a world we are constantly observing together, but perceiving individually.



Years of work as a set designer and art director have influenced Phoebe. While she has gradually leant towards a slower artistic practise, this background in immersive environments and imaginative world-building continues to shape her work and her interest in perspectivism.

With an education in printed textile design, her work sometimes sits between ornament and fine art. Here, she also aims to push pattern design as a serious visual language, capable of holding deep personal narrative and emotion.

PHOEBE DEEPROSE



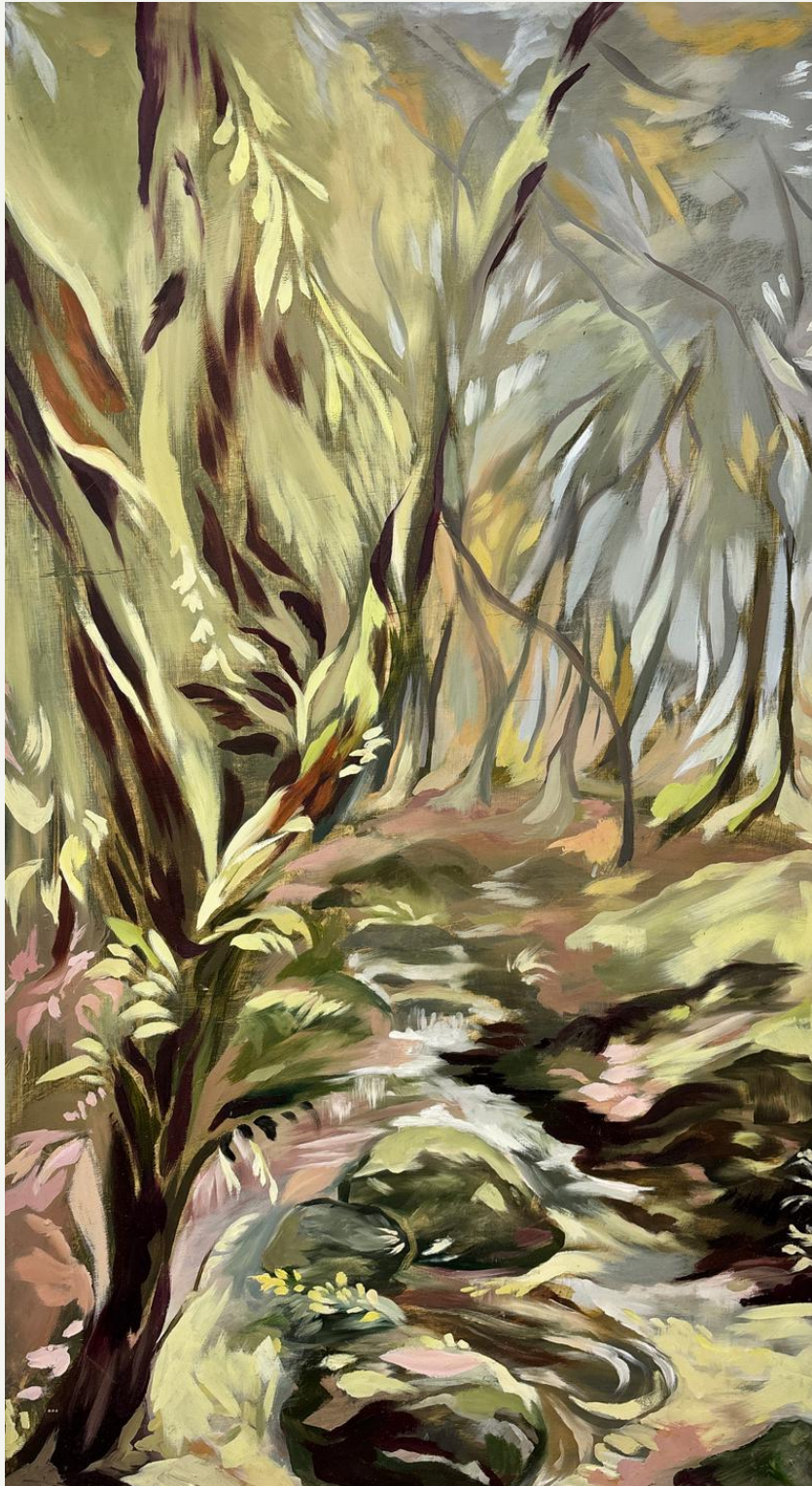
The River And Her Daughters

Oil on panel, framed in oak

108 × 61 cm (artwork)

£1400

PHOEBE DEEPROSE



It Glows Quietly ●
Oil on panel
108 × 61 cm (artwork)
£1400

PHOEBE DEEPROSE



Last Of The Light
Oil on panel, framed in oak
80 × 70 cm (artwork)
£1250

PHOEBE DEEPROSE



Four Figures Dancing
Oil on panel, framed in oak
61 x 46 cm (artwork)
£950



Embers of Memory
Oil on panel, framed in oak
80 x 38 cm (artwork)
£950

BETHANY HOLMES

Cambridgeshire based abstract painter Bethany Holmes, creates emotive and expressive mixed media paintings.

Bethany's works are an extension of the senses. She looks to nature & the surrounding countryside for inspiration, to create a relationship between landscape and canvas.

Bethany's paintings are a perfect harmony of impulsive, energetic mark making and softer looser gestural movements. An intuitive ability to control complete colour chaos and composition is what defines her paintings and showcases her unique style.

The intensity and striking depth of field in her works are always so impressive and utterly charming.



“Her approach is frenetic, committing paint to a given surface with rapidity and abandon, and she describes this as being loud and that it occurs with a burst. Working in close proximity to a surface, an urgent and unconscious rhythm takes over her in a vigorous visual cacophony. Brushes, which keep within the span of the hand, become decision makers as she strikes – briskly sweeping and jabbing – there is a beauty in the fight.”

- Dr Matt Retallick on Bethany's practice

BETHANY HOLMES



Songs Before Sunrise

Acrylic, oil stick, graphite & pastel on linen

Framed in Walnut

70cm x 112cm

£2,950

BETHANY HOLMES



A Life in Bloom I & II

Acrylic, oil stick, graphite & pastel on linen

Framed separately in walnut

67cm x 53cm

Diptych £3200

BETHANY HOLMES



Yesterday's Gone

Acrylic, Pastel, Oil Stick on Canvas

Framed in dark wood

65 x 65cm

£1980

OLLIE MARR

Ollie Marr is a South African artist based in London, currently completing the Drawing Year Programme at the Royal Drawing School.

Reinforced by his studies at the Drawing School, observational drawing has become a daily practice and the foundation of Ollie's work. Ollie draws green spaces in and around London.

He also regularly seeks out the wider vistas of Scotland, Cornwall and Cape Town, places that link back to his sense of self and of home, and with which he has cultivated deep relationships through drawing.



Ollie draws with graphite or charcoal in sketchbooks and on loose sheets of paper prepared with a coloured ground. Through looking, Ollie engages directly with his experience of reality, deconstructing that experience by drawing what he sees.

Through processes of printmaking and working from memory, Ollie then uses his drawings as a basis to develop paintings in his studio. In this part of his practice, rather than engaging with experience directly, Ollie revisits the moments in his drawings, engaging with the feelings they invoke through layers of paint.

This lends a remembered quality to his paintings, where the viewer is invited not just to look but to enter into and feel the space.

OLLIE MARR



Orange Trees

Oil on linen

50 x 70

£2800

OLLIE MARR

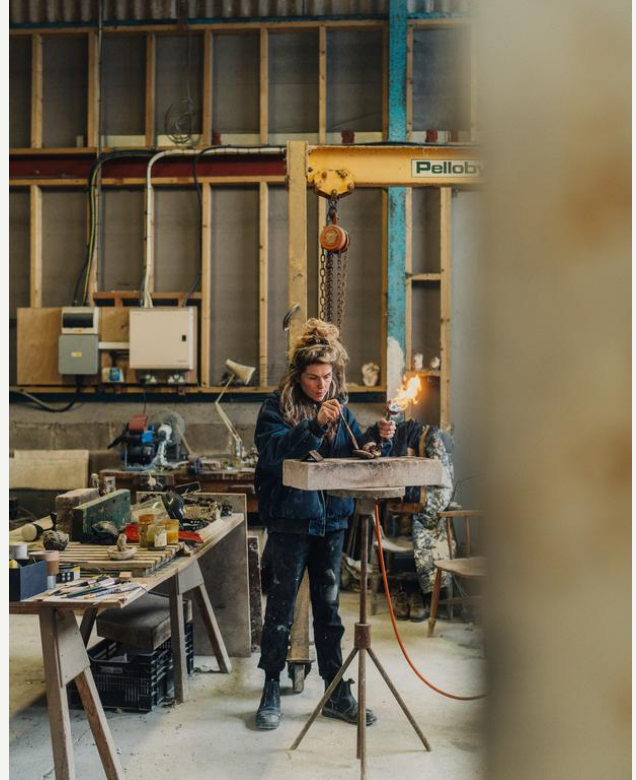


Three Birds
Oil on linen
80 x 110 cm
£3500

ALICE-ANDREA EWING

Alice Andrea Ewing is an artist and founder-sculptor living and working in Suffolk, UK. She leads the craft-design studio Pomarius.

Having read History of Art at Pembroke College, Cambridge University, she went on to train to cast in the Italian or Renaissance Lost Wax method. In 2016 she and fellow artist Freddy Morris established their own studio and foundry, run as a family atelier. Close proximity to all the processes and materials of casting is an integral aspect of her practice and design.



She has exhibited nationally and internationally with pieces in a number of private collections, including the Loewe Craft Foundation.

In 2021 Ewing collaborated with the fashion label Loewe under creative director Jonathan Anderson for the SS21 and FW21 collections, producing sculptures and a limited edition jewellery collection. She has worked with English Heritage's Audley End House (Saffron Walden) and Wildland Estate's Aldourie Castle (Loch Ness) on sculpture collections connected to both sites.

ALICE-ANDREA EWING



Blush Pear I,
10 x 6 x 6cm, Colour Patina, Unique Bronze Cast. £320 ●

Blush Pear II,
10 x 6 x 6cm, Colour Patina, Unique Bronze Cast. £320 ●

Blush Pear III,
9.5 x 6 x 6cm, Colour Patina, Unique Bronze Cast. £320 ●



Whole Turkish Figs (3 available)
7 x 5 x 5cm approx
Verdigris, Unique Bronze Cast
£180 each ● ● ●

Half figs (2 available)
7 x 4 x 2cm
Verdigris, Unique Bronze Cast
£180 each ● ●

ALICE-ANDREA EWING



Sliced Apple with Stem

8.5 x 7 x 4.5 cm

Raw Bronze, Unique Bronze Cast.

£300

Nibbled Half Apple

6 x 6.5 x 3.5 cm

Raw Bronze, Unique Bronze Cast.

£300

Apple Slice

7 x 3.5 x 6cm

Raw Bronze, Unique Bronze Cast.

£300

Sliced Pomegranate (2 available)

8 x 4 x 7.5cm

Dark Red Patina, Unique Bronze Cast.

£320

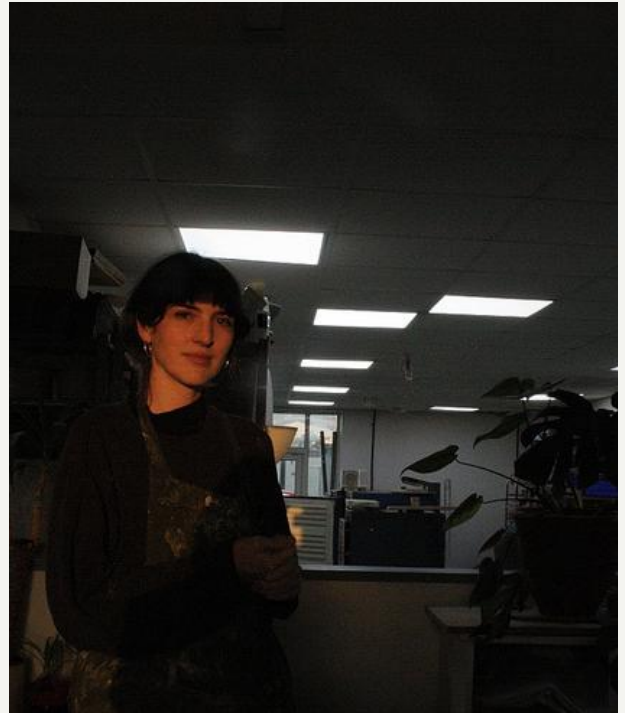


ALICE MERIDA RICHARDS

Alice Merida Richards is a Brighton-born artist, teacher, and facilitator.

A member of the Manchester Ceramics Collective, Alice works from the group's shared studio in Old Trafford. She also collaborates closely with organisations such as Venture Arts and the British Ceramics Biennial, delivering group projects and programmes that support artistic development.

Alice's practice explores the concept of *artefactness*—the way an object's material qualities can evoke meaning, history, and cultural resonance.



Drawing inspiration from ancient relics and ritual artefacts, her pieces function as temporal passageways, bridging the contemporary and the ancestral, the functional and the ethereal.

She is deeply engaged with materiality, process, and collaboration. Her practice reflects a sustained curiosity about and experimentation with clay, drawing on a range of techniques including wheel-throwing, slab-building, extruding, and altering. Whenever possible, her work is wood-fired, producing surfaces that bear the traces of ash and flame—records of the firing process itself.

ALICE MERIDA RICHARDS



Spiral Loving Cup
(6 available)

Thrown double-handle cup.
Blue stained, Iron-speckled Stoneware.
White Glaze with Green Spiral Detail.
Dimensions (approx): 14cm x 8cm
£40 each



Loving Cup
(6 available)

Thrown double-handle cup.
Buff Stoneware. White Glaze.
Dimensions (approx): 14cm x 8cm
£35 each

ALICE MERIDA RICHARDS



Spiral Plate
(6 available)

Stamped stoneware plate in iron-flecked clay, matte glaze with green spiral detail.
Dimensions: 17cm x 17cm x 1cm
£30 each



Quarter Spiral Plate
(6 available)

Stamped stoneware plate with Tenmoku spiral detail.
Dimensions: 17cm x 17cm x 1cm
£30 each

ALICE MERIDA RICHARDS



Slotted Urn (Tenmoku)

Thrown Lidded stoneware jar with cut out slots. In matte white glaze with green details and Tenmoku glaze.

£85



Slotted Urn (White)

Thrown Lidded stoneware jar with cut out slots. In matte white glaze with green details and White glaze.

£85

ALICE MERIDA RICHARDS



Double Spirit Flower Shelf ●

Extruded and slab-built wall mounted stoneware vase with two shelves. Wood fired.

Dimensions: 50cm x 40cm X 7cm

£200

held in the quiet

10th June - 22nd July 2026

For all enquiries or pre sale availability please get in contact
with the gallery via email or phone at:

caroline@milieustudios.co.uk
07875343285

The full collection will be available for sale online & in
person from Wednesday 10/06/26 at 6pm.

www.milieustudios.co.uk

MILIEU

ΠΙΛΙΞΟ