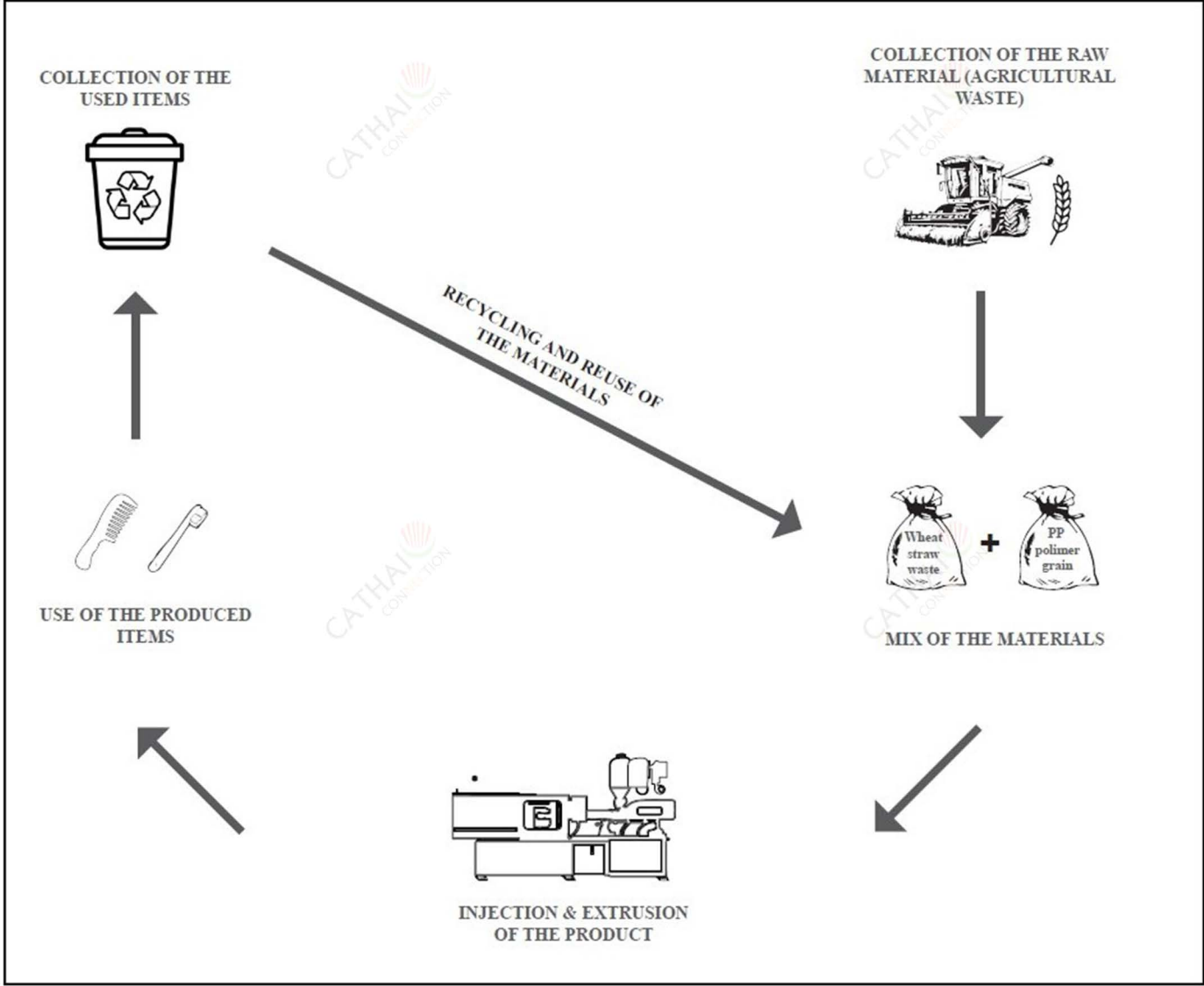


CATALOG

Wheat straw items cycle process



PRODUCTS



TOOTHBRUSH

SLIPPERS

COMB

OTHER

- Sustainable Products /Eco Friendly Products
- Bamboo - Biodegradable
- Plastic - Recyclable

- Sustainable Products /Eco Friendly Products
- Disposable slippers
- High grade washable slippers

- Sustainable Products /Eco Friendly Products
- Plastic - Recyclable

- Cotton bud/Cotton Pad
- Razor
- Toothpaste
- Shaving Cream
- Loofah
- Soap
- Sewing Kit
- Paper Glass Cover
- Nail File





01

02

Nylon sharp bristle



Why Nylon?

- because its great **FLEXIBILITY** allowing to reach all areas from the moth ensuring a great cleaning.
- because its **RESISTANCE** to bacteria and mold growth, making it hygienic and safe for daily use.
- because its **RECYCLABLE** .



Wheat straw/PP polymer mixture



02

Why Wheat Straw/PP mixture?

- because we reduce plastic consumption generating a lower **CARBON FOOTPRINT**.
- because we increase the **BIODEGRADABILITY** of the final product.
- because its a **SUSTAINABLE** material that provides a second life to an agricultural waste.





03

04



05

06



07

08



09

10





11

12



13

14



15



16

17



What is a Biodegradable product?

- is a product that can be broken down by microorganisms into natural elements in a relatively short time frame work.



01

02

03

BAMBOO HANDLE, 100% **BIODEGRADABLE**, 100% **ECO-FRIENDLY**



04





05

06

07



01



02



03



Recyclable PP plastic handle

Nylon sharp bristle

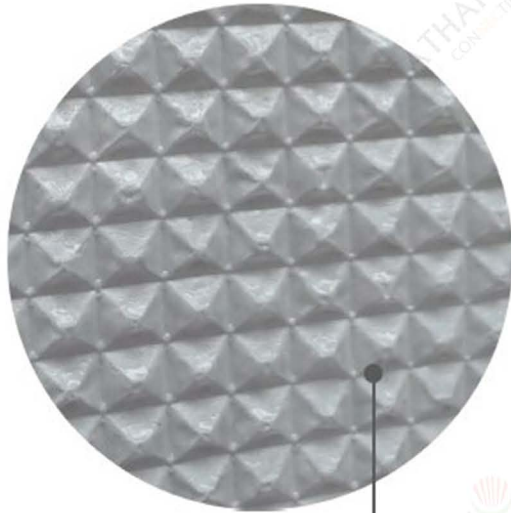


01

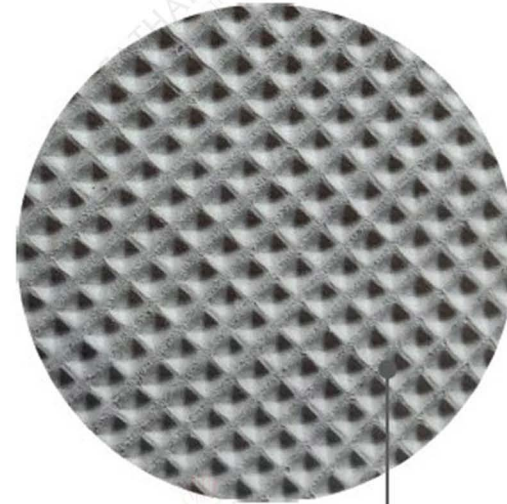
02



Why EPE sole is a more ecofriendly choice over EVA



EPE FOAM



EVA FOAM

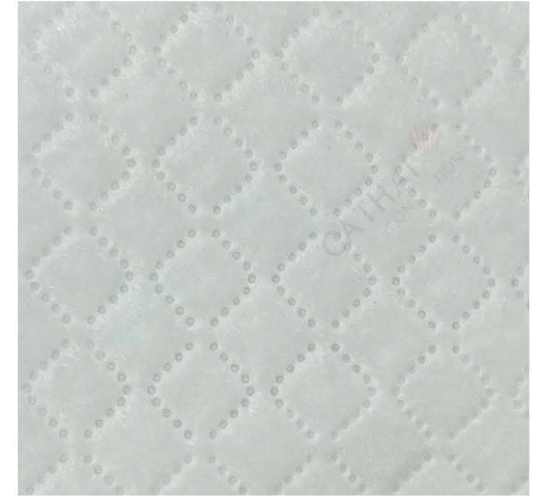
- BECAUSE** EPE is more biodegradable than EVA. It can decompose faster over time, reducing its environmental impact.
- BECAUSE** EPE production often involves less energy-intensive processes and fewer chemical additives compared to EVA.
- BECAUSE** EPE is easier to recycle due to its simpler chemical composition.



01

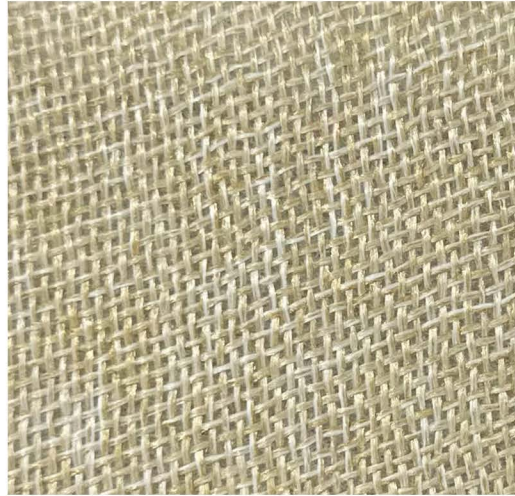


02



Highlights

- ACUPUNCTURE COTTON material, ECOFRIENDLY CHOICE.
- NON-TOXIC, ODORLESS EPE sole.



Highlights

- LINEN material, ECOFRIENDLY CHOICE.
- High cushioning EVA SOLE.

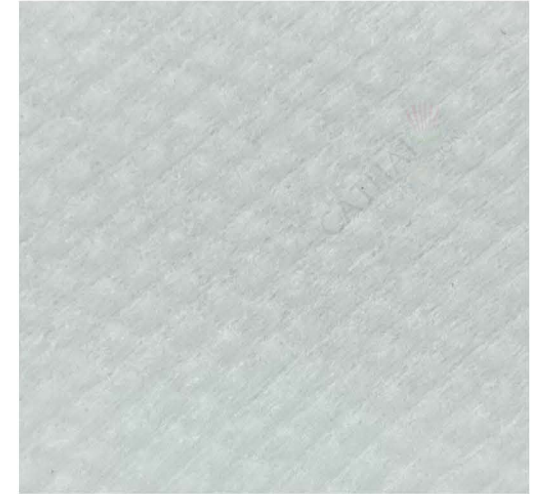
Highlights

- LINEN material, ECOFRIENDLY CHOICE.
- High cushioning EVA SOLE.



Highlights

- NAP material, soft touch and good comfort
- Great cost/effective item.

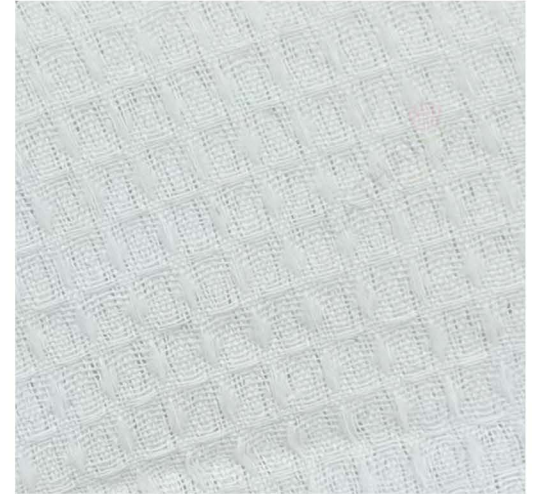


Highlights

- COTTON PEARL material, ECOFRIENDLY CHOICE.
- EVA + DOT ANTI-SLIP LAYER sole. Good cushioning with great grip properties.

Highlights

- COTTON PEARL material, ECOFRIENDLY CHOICE.
- Kraft paper 100%, BIODEGRADABLE sole.



Highlights

- COTTON TERRY material, ECOFRIENDLY CHOICE.
- EVA + DOT ANTI-SLIP LAYER sole. Good cushioning with great grip properties.

Highlights

- COTTON WAFFLE material, ECOFRIENDLY.
- WASHABLE Slipper.



Highlights

- COTTON CORAL VELVET material, ECOFRIENDLY.
- WASHABLE Slipper.



Highlights

- Cotton coraal velvet.
- Washable slipper.
- Premium comfort grade.
- Thick EVA sole.





Highlights

- Cotton velvet.
- Washable slipper.
- Thick EVA sole.





01



02





03



04



05





06



07



08



09



10



11



12



13



01

02





03

04





SHOWER CAP



SHOWER CAP



TOOTHPASTE



TOOTHPASTE



TOOTHPASTE



SHAVING CREAM



LOOFAH



SOAP



SEWING KIT



PAPER GLASS COVER



NAIL FILE



SHOE MITT



COFFEE SETS



STRAW

