

**BE ALL THAT
YOU WANT TO BE.**



Residential cum Day Boarding School

Offering education from K-XII (Science/ Commerce/ Humanities)
Affiliated to CBSE, New Delhi. | Affiliation No. 630331 | School No. 41968

BEAUTIFUL BEGINNINGS...

Research says that the first few years of a child's development are the most important, as they have a profound and lasting effect on one's values, skills and interests. Critical to the development, performance and success, later in life, these early years decide who the child will grow up to be!

With this in mind, the *Solan Public School, Solan* does everything in its capacity to give children the right foundation and a head start by instilling the right values in children and transforming them into lifelong learners.

By exposing them to Arts, Sports and Co-curricular activities, we inculcate in them life skills, critical thinking and intellectual curiosity . . . the key ingredients for success in the 21st Century.

We give our children a beautiful beginning!



Solan Public School

VISION STATEMENT

Solan Public School provides affordable and quality education to students of all strata of society, irrespective of caste, creed or gender. The aim is to foster global mindset with values deep rooted in our Indian culture. The School is committed to instill values of social justice, equality, knowledge and skills by providing unlimited possibilities for every child to realize their potential and fulfill their ambitions.





MISSION STATEMENT

Solan Public School will impart an integrated curriculum blended with experiential learning by providing tools and techniques of communication, collaboration, critical thinking and creativity. The school empowers its students with entrepreneurial and leadership skills to enable them to become well adjusted, environmentally conscious and future ready citizens of the world.

Solan Public School, Solan

- A PROFILE

Solan Public School is a dream project of Liberating Minds Foundation, the Company under the flagship of which the school will blossom. Liberating Minds Foundation is registered under Section 8 of the Companies Act, 2013. In its endeavour to support the ongoing efforts in building the nation, Liberating Minds Foundation has come up with a state-of-the-art Residential and Day Boarding School in Vill. Anji, Rajgarh Bypass, Solan, Himachal Pradesh - 173211. With its primary aim of offering holistic education from K to XII (Science/ Commerce/ Humanities), Solan Public School opened its portals to education on 28th March, 2019.

The School is recognized by the Govt. of Himachal Pradesh (Recognition Number 211/19-20 and U-DISE Code is – 02090100802). The school is affiliated to CBSE, New Delhi (Affiliation No. 630331, School No. 41968). Solan Public School extends world-class infrastructure facilities to all the students irrespective of caste, creed or gender. With a serene and beautiful ambience and modern infrastructure, Solan Public School is an ideal retreat situated in the foothills of Himalaya to influence a conducive environment for a lasting and memorable learning experience.





Located amidst mountains, in Solan, on Chandigarh - Shimla Highway



Well connected by air, road, train; 65 km from Chandigarh airport; 40 km from Kalka railway station



21st Century learning with traditionally rooted values



Managed by dedicated educationists/ philanthropists/ edupreneur



Technology-supported classrooms and state-of-the-art hi-tech library



Educational excursions & exchange programs



Certified school as per every safety and infrastructure standards



Differently-abled friendly campus with elevators.



GPS-enabled transport facility



Frequent visits of guest speakers and experts of different fields



Environment-friendly green school with solar panels, rainwater harvesting, STP, etc



Career counselling and leadership opportunities for the students

USPs OF Solani Public School, Solani



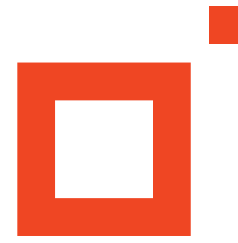


OUR CURRICULUM

Pre-primary to Senior Secondary

CBSE curriculum

The pedagogy is blended with Experiential Learning, Internationalism, Collaboration, Creative Thinking, Critical Thinking, and Communication.



**BE
INFRAST**





BEST STRUCTURE



OUR CHILDREN LEARN BY DOING

"For the things
we have to learn
before we can do them,
We learn by doing them"
— Aristotle

The school clubs, managed by professionals, include



SCIENSATION (scientific discoveries, experiments, inventions)



MATHEMAGICIANS (Maths games, Mathematical tricks, quick ways to practice sums)



TECH-WIZ (website designing, coding, social media savvy, apps)



QUIZZARDS (quizzing)



EXPRESSIONS (calligraphy, reading, creative writing, debate, elocutions, public speaking)



ART AND CRAFT (traditional painting, sculpture, clay modelling)



NEEDLE CRAFT (sewing, knitting, basket weaving)



SERVICE ABOVE SELF (organize events for social services, awareness campaigns on local issues)



KALAKSHETRA (dance and music)



THEATRE (cinema, literature, acting, film appreciation)



EXPERIENTIAL LEARNING

Strong roots guarantee stable tomorrow

We believe that our culture's glorifying past guides young students of today in becoming pioneers of tomorrow. We create experiential learning environments like state-of-the-art library, 3-D paintings on pillars and boasts of recreating four mandapas of Pallavas Dynasty made out of Temple granite.

PERFORMING ARTS

Children learn arts through the experiential learning. A variety of instruments are offered to the children in their process of learning..



LIFE SKILLS

Solan Public School embeds adaptive and positive behaviour into children that enable them to deal effectively with the demands and challenges of life.





3D PAINTINGS ON PILLARS

The experiential learning environment is created through the 3-D paintings of the fauna done by the experts on the pillars in the school.



SPORTS

Solan Public School facilitates top-class sports and cultural facilities to its students promoting the holistic and mental health of the child.



ENTREPRENEURIAL SKILLS BEING INDUCTED IN SOLANITES!

“Everyone can tell you the risk. An entrepreneur can see the reward.”

— Robert T. Kiyosaki



SCIENSATION (scientific discoveries, experiments, inventions)



KHANA KHAZANA (techniques and terms of cooking, presentation, salads, shakes, desserts)



NEEDLE CRAFT (sewing, knitting, basket weaving)



s,



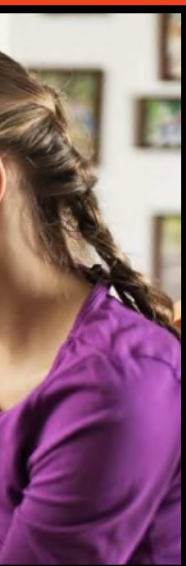
BUSINESS (learning skills for successful businessmen)



ing and



CARPENTRY (techniques for making new tools and designs.)



g)



TECH-WIZ (website designing, coding, social media savvy, apps)

The image shows a bright, modern school cafeteria. In the foreground, there are white tables and chairs. The background features large windows, a colorful wall with red and yellow stripes, and a green and white striped wall. A colorful mosaic tile path leads through the room. The text is overlaid on a semi-transparent white box in the center.

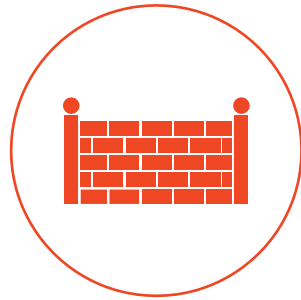
The school has its own cafeteria.

STUDENTS ARE OFFERED
FOOD FULL OF GOODNESS
AND ENERGY.



**CHILDREN SHOULD BE
AS SAFE AS THEY
ARE AT HOME.
OUR SCHOOL OFFERS
3-TIER SECURITY.**

SAFETY AND SECURITY



Boundaries and proper fencing as per norms



CCTV Surveillance – monitored and maintained regularly



Well-trained efficient guards around the clock



School-managed & GPS-enabled transport



Certified by the fire and rescue services



Infirmary





WE BUILT THE ENTIRE SCHOOL AROUND THE NEEDS OF A SINGLE CHILD.

CLASSROOMS & PEDAGOGY

1. Optimum class strength
2. Spacious classrooms for students with an average classroom size of 600 sq. ft
3. Adequate natural lighting and ventilation in each classroom
4. Personalised attention to each student
5. Differentiated instructions with a hands-on approach
6. Skill-based experiential learning with interdisciplinary pedagogy
7. Trained, well-qualified and sensitized mentors
8. Values blended into the teaching-learning process

ACADEMIC TERMS:

TERM I - February to July

TERM II - August to January

SCHOOL TIMINGS:

(For day-boarders only)

Summer

April to September 8:30am –

1:00pm/2:40pm Pre-Primary/1st Grade
onwards

Winter

October to April 9:00am –

1:30pm/3:10pm Pre-Primary/1st
Grade onwards





MILEST

Solan Public s



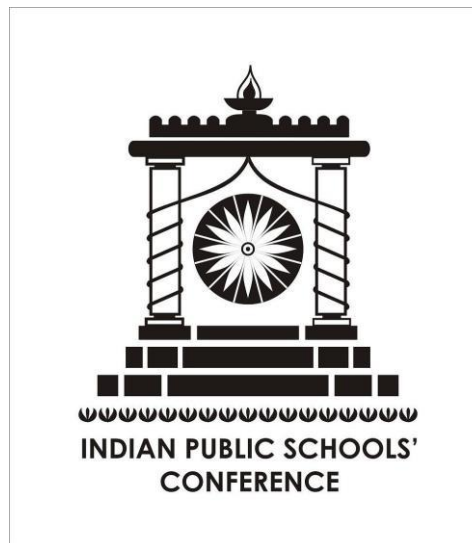


TONES@ School, Solan



OUR ASSOCIATIONS:

- British Council, ISA
- Ysgol Llanllechid Wales, UK
- Ysgol Henblas Wales, UK
- World Peace Flame Foundation, UK
- Freinet School , Netherland
- Roombeek School, Netherland
- The Bharat, Scouts and Guides
- IPSC
- MUN
- Round Square
- Spic Macay
- Trinity College, London
- IAYP
- Cambridge/IBO
- NCC





Solan Public School
Post Box - 1, Vill. Anji,
Rajgarh Bypass Road, Solan,
Himachal Pradesh - 173211



YOUR ROAD MAP TO SUCCESS

Want to find your child's way to a life of achievement?
First, find your way to Solan Public School, Solan.

Solan Public School, Solan

Beautiful Beginnings...

POST BOX - 1, VILL. ANJI, RAJGARH BYPASS ROAD, SOLAN, HIMACHAL
PRADESH - 173211

 **8988801999, 8988802999, 8988803999, 8988804999**

 admissions@solanpublicschool.com | info@solanpublicschool.com

For the latest updates, visit us at:

www.solanpublicschool.com | www.facebook.com/solanpublicschool | www.instagram.com/solanpublicschool

www.youtube.com/solanpublicschool



Solan Public School, Solan

Beautiful Beginnings...

POST BOX - 1, VILL. ANJI, RAJGARH BYPASS ROAD, SOLAN, HIMACHAL
PRADESH - 173211

☎ 8988801999, 8988802999, 8988803999, 8988804999

✉ admissions@solanpublicschool.com | info@solanpublicschool.com



For the latest updates, visit us at:

www.solanpublicschool.com | www.facebook.com/solanpublicschool | www.instagram.com/solanpublicschool

www.youtube.com/solanpublicschool