



Wear **M*e*i** 2026
Designed in France

Wear Moi

375 Avenue Saint Just
83130 La Garde - FRANCE
Phone: +33 (0) 498 01 6000
Email: info@wearmoi.com

Wear Moi (North, Central and South America)

3352 N Broadway - Chicago IL 60657 - USA
Phone: +1 (773) 850 3119
Email: usa@wearmoi.com

Ladies & Girls.....	4
Warm up & Activewear.....	76
Men & Boys.....	96
Shoes & Tights.....	118
Shoe Accessories.....	172
Tights.....	174
Accessories.....	180
Custom By Moi.....	184
More Color Choice.....	186
Your Logo Your Way.....	188
Size Chart.....	192



Wear Mei

Designed in France

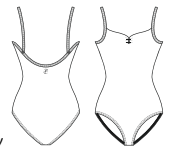
LADIES & GIRLS







ABIE



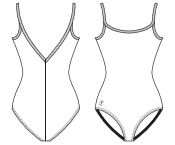
Children: 4/6 - 6/8 - 8/10 - 10/12 - 12/14
Ladies: XS - S - M - L - XL ** - XXL** - XXXL**

* Not available in sizes 4/6 and 6/8 ** Available in Black, Navy and Burgundy only

Basic, simple and elegant camisole leotard with a mid-back profile and front pinch. Available in 25 colors.
Microfiber - Front lining



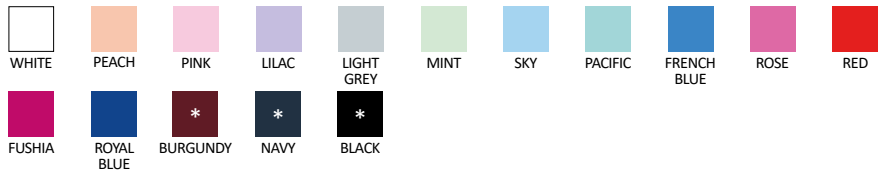
THALIA



Children: 4/6 - 6/8 - 8/10 - 10/12 - 12/14
Ladies: XS - S - M - L

* Not available in sizes 4/6 and 6/8

Basic camisole leotard with a V-back and back seam.
Available in 16 colors.
Microfiber - Front lining



GALATE



Children: 4/6 - 6/8 - 8/10 - 10/12 - 12/14
Ladies: XS - S - M - L - XL** - XXL**

* Not available in sizes 4/6 and 6/8
** Available in Black and Navy

Elegant pinch front tank leotard with under bust detail made with soft microfiber.
Microfiber - Front lining



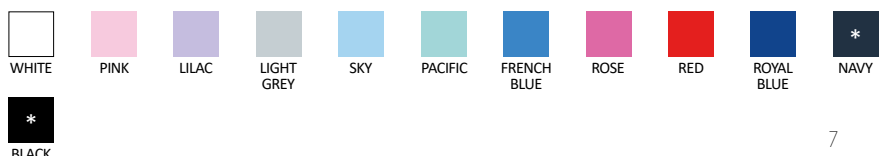
EMERAUDE



Children: 4/6 - 6/8 - 8/10 - 10/12 - 12/14
Ladies: XS - S - M - L - XL ** - XXL**

* Not available in sizes 4/6 and 6/8
** Available in Black and Navy only

Basic square front tank style leotard. Available in 12 colors.
Microfiber - Front lining



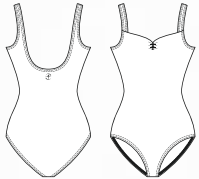


FAUSTINE



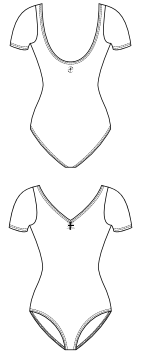
Children: 4/6 - 6/8 - 8/10 - 10/12 - 12/14
 Ladies: XS - S - M - L - XL** - XXL** - XXXL**
 * Not available in sizes 4/6 and 6/8
 ** Available in Black, Navy and Burgundy only

Microfiber basic tank leotard with front pinch.
 U-cut back. Available in 25 colors.
 Microfiber - Front lining





CANDIDE



Children: 2/4 - 4/6 - 6/8 - 8/10 - 10/12 - 12/14

Ladies: XS - S - M - L - XL** - XXL**

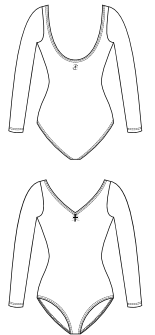
* Not available in sizes 2/4, 4/6 and 6/8

** Available in Black, Navy and Burgundy only

Classic short sleeve leotard with gathered scoop neckline and scoop back.
Microfiber - Front lining



LOVINA



Children: 8/10 - 10/12 - 12/14

Ladies: XS - S - M - L - XL** - XXL**

** Available in Black, Navy, and Burgundy only

Classic long sleeve leotard with gathered scoop neckline and scoop back.
Microfiber - Front lining



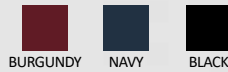
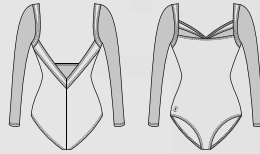


LAVANDE



Ladies: XS - S - M - L - XL - XXL

Long-sleeved microfibre leotard with sheer stretch tulle showcasing the arms, neckline, and back. Deep open back.
Microfibre - Stretch Tulle - Front lining



BURGUNDY NAVY BLACK

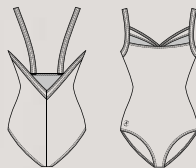


CYPRES



Children: 8/10 - 10/12 - 12/14
Ladies: XS - S - M - L - XL* - XXL*
** Available in Black only*

Microfibre camisole leotard with sheer tulle at the upper neckline and a triangle cut-out on the back. Deep open back.
Microfibre - Stretch Tulle - Front lining



WHITE PACIFIC BURGUNDY BLACK



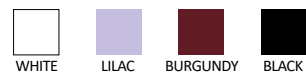
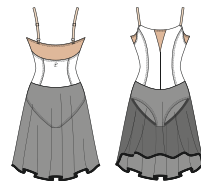


Collection
Empire



Children: 8/10 - 10/12 - 12/14
 Ladies: XS - S - M - L - XL* - XXL*
 * Available in Black only

Camisole skirted leotard scoop neckline with adjustable straps and V-cut mesh neckline. Transparent back mesh panel. Its long skirt makes it a perfect uniform for any performance.
 Microfiber - Stretch Tulle - Front lining





RUBY



Children: 6/8* - 8/10 - 10/12 - 12/14

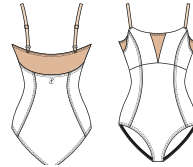
Ladies: XS - S - M - L - XL** - XXL**

* Available in White, Black and Pink only

** Available in Black, Navy, and Burgundy only

Camisole leotard scoop neckline with adjustable straps and V-cut mesh neckline. Transparent back mesh panel. Perfect uniform for any performance.

Microfiber - Stretch Tulle - Front lining



VOLANTE



Children: 6/8* - 8/10 - 10/12 - 12/14

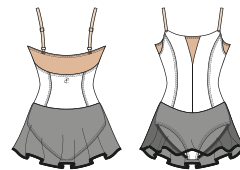
Ladies: XS - S - M - L - XL** - XXL**

* Available in Pacific and White only

** Available in Black only

Camisole skirted leotard scoop neckline with adjustable straps and V-cut mesh neckline. Transparent back mesh panel. Perfect for competitions or shows.

Microfiber - Stretch Tulle - Front lining







HARLOW



Ladies: XS - S - M - L

Sleek leotard with thin straps, a tulle neckline insert, and crisscross back straps with tulle accents. Includes a discreet chest pocket for removable bra inserts.

Microfiber - Stretch Tulle - Front lining



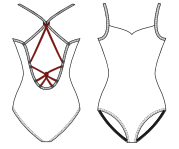
PAGE



Ladies: XS - S - M - L

Discover PAGE, featuring a sleek front with a front pinched for a feminine touch. The bold back has elegant crossed straps, and the front includes a discreet chest pocket for removable bra inserts.

Microfiber - Front lining



DOLORES



Ladies: XS - S - M - L - XL* - XXL*

* Available in Black and Navy only

Leotard featuring short sleeves, a V-neckline, and a unique diamond-patterned tulle back. Includes a discreet chest pocket for removable bra inserts.

Microfiber - Stretch Tulle - Front lining



ANGELIQUE



Children: 8/10 - 10/12 - 12/14

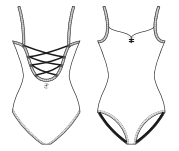
Ladies: XS - S - M - L - XL** - XXL**

* Available in adult size only

** Available in Black and Navy only

This camisole leotard balances simplicity and originality with a solid color front and classic pinch. The back features interlacing straps for secure hold.

Microfiber - Front lining





MAUVE



Children: 8/10 - 10/12 - 12/14
Ladies: XS - S - M - L - XL** - XXL**
** Available in adult size only*
*** Available in Black and Navy only*



A new take on uniforms, Mauve features fashion strappy back, and all business on the front. The best of two worlds combined in this basic/fashion piece. Pinched front, strappy back.
Microfiber - Front lining



MARIE



Ladies: XS - S - M - L - XL* - XXL*
** Available in Black and Navy only*



A beautiful timeless look created by this basic/fashion leotard. Fun crisscross straps on the back with medium U-drop back. Pinched front.
Microfiber - Front lining



REMOVABLE BRA INSERT



Girls: 10/14*
Ladies: XS/S - M/L
** Available in Beige only*



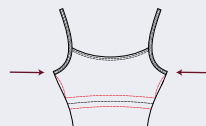
Enjoy comfort and support with our removable bra insert for FlexiFit Support leotards. Discreet, flexible, and stage-ready.
Polyester



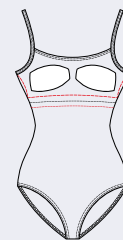
Wear Me!

FlexiFit Support

How To Use?



Fold the pad in half to facilitate its insertion through the opening on the side, inside the lining

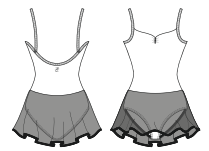


Adjust the pads in the leotard at your convenience





BALLERINE



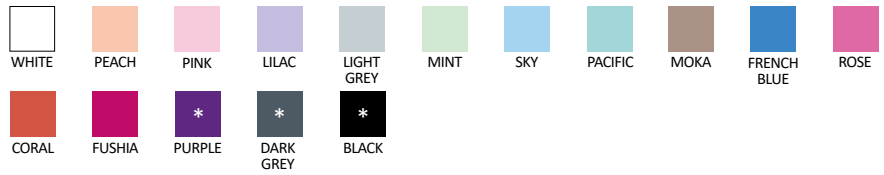
Children: 4/6 - 6/8 - 8/10 - 10/12 - 12/14

Ladies: XS - S - M - L - XL** - XXL**

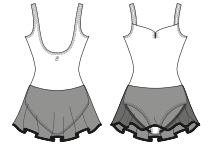
* Not available in sizes 4/6 and 6/8

** Available in Black only

Microfiber basic, simple and elegant camisole dress, with a mid-back profile, front pinch and attached four-way stretch tulle skirt.
Microfiber - Stretch Tulle - Front lining



BALKALA



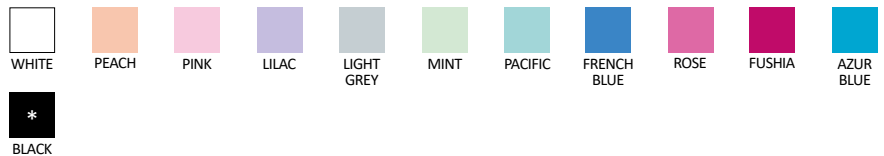
Children: 4/6 - 6/8 - 8/10 - 10/12 - 12/14

Ladies: XS - S - M - L - XL** - XXL**

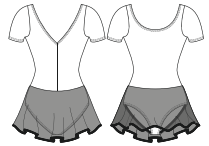
* Not available in sizes 4/6 and 6/8

** Available in Black only

Microfiber basic tank dress with front pinch. U-cut back and attached four-way stretch tulle skirt.
Microfiber - Stretch Tulle - Front lining



ARDESIA



Children: 4/6 - 6/8 - 8/10 - 10/12 - 12/14

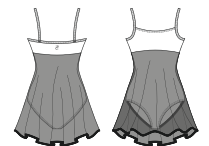
Ladies: XS - S - M - L

Short sleeve microfiber basic dress, featuring a modest, high back-cut and an attached four-way stretch tulle skirt.

Microfiber - Stretch Tulle - Front lining



AZUREA



Children: 6/8 - 8/10 - 10/12 - 12/14

Ladies: XS - S - M - L - XL* - XXL*

* Available in Black only

This thin-strapped camisole dress, with empire mesh tulle overlay is perfect for the studio and will look absolutely dazzling on stage.

Microfiber - Stretch Tulle - Front lining



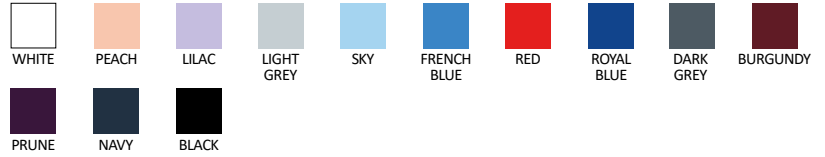


ALEGRO



Children: 4/8 - 8/12
 Ladies: XS/S - M/L - XL/XXL**
 ** Available in Black only

Sheer four-way stretch tulle wrap skirt, featuring a stretch waistband and beautiful hem. Ideal for uniforms.
 Stretch Tulle - Microfiber



DOLLY



Children: 4/8 - 8/12
 Ladies: XS/S - M/L - XL/XXL*
 * Available in Black only

This classic length faux wrap skirt is made from four-way stretch mesh with exclusive Wear Moi hem.
 Stretch Tulle - Microfiber



DELIA



Children: 4/8 - 8/12
 Ladies: XS/S - M/L - XL/XXL*
 * Available in Black only

A longer style faux wrap skirt. Beautiful four-way stretch mesh and signature Wear Moi hem.
 Stretch Tulle - Microfiber



DAPHNE



Children: 4/8 - 8/12
 Ladies: XS/S - M/L - XL/XXL**
 * Not available in sizes 4/8
 ** Available in Black and Navy only

Sheer four-way stretch tulle pull on skirt features a color-matched elastic waistband. Length of the skirt depends on size.
 Stretch Tulle





MAGDA



Children: 4/8 - 8/12

Ladies: XS/S - M/L - XL/XXL**

* Not available in sizes 4/8

** Available in Black and Navy only



A 4 cm addition to our most popular skirt, Daphne, makes this four-way stretch mesh pull on skirt a must have.
Stretch Tulle



WHITE



LILAC



FRENCH
BLUE



PURPLE



DARK
GREY



BURGUNDY



FOREST
GREEN



NAVY



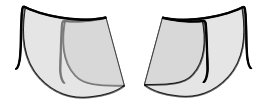
BLACK



APOLO



Ladies: XS/S - M/L - XL/XXL



A long wrap skirt for ladies, constructed of beautiful four-way stretch mesh and a flexible waist band. Perfect for adults and teachers.
Stretch Tulle - Microfiber



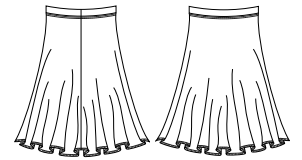
BLACK



FADO

Children: 8/10 - 10/12

Ladies: XS/S - M/L - XL/XXL



Below the knee character skirt.
Soft microfiber full circle skirt with an elastic waistband.
Microfiber



BLACK

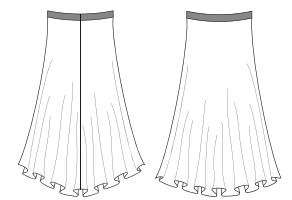


MELINA



Children: 8/12

Ladies: XS/S - M/L - XL/XXL



This knee-length transparent tulle skirt with a microfiber waistband adds smooth, elegant movement to your rehearsal look.
Stretch Tulle - Microfiber



WHITE



BURGUNDY



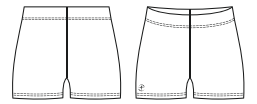
NAVY



BLACK

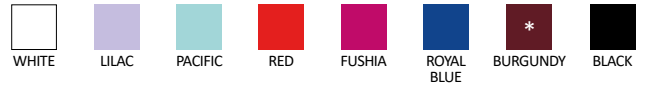


GIPSY

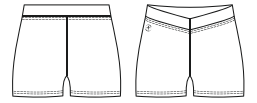


Children: 4/6 - 6/8 - 8/10 - 10/12
Ladies: XS - S - M - L - XL** - XXL**
** Not available in sizes 4/6 and 6/8*
*** Available in Black only*

Gipsy short features soft microfiber elastane fabric and a comfortable elastic waistband.
Microfiber



MACARON

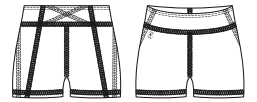


Children: 6/8 - 8/10 - 10/12
Ladies: XS - S - M - L - XL - XXL

These hotpant shorts provide a flattering silhouette in the studio or on stage.
Microfiber



ARIELLE



Children: 6/8 - 8/10 - 10/12
Ladies: XS - S - M - L - XL - XXL

Booty shorts that fit at the natural waistline. Perfect for any dance style.
Microfiber

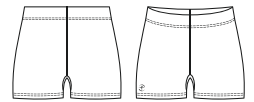






ANDESITE

Children: 8/10 - 10/12
Ladies: XS - S - M - L - XL - XXL



Basic microfiber short undergarment, offering a gusset for maximum flexibility.
Soft Microfiber- Cotton-lined gusset



AELIS

Ladies: XS - S - M - L - XL - XXL



Comfortable thong for dancers, thin four-way stretch mesh and soft microfiber help this undergarment disappear under any leotard or costume piece.
Soft Microfiber - Stretch Tulle - Cotton-lined gusset



DIV 117



Children: 4/6 - 6/8 - 8/10 - 10/12 - 12/14
Ladies: XS/S - M/L - XL/XXL*

* Available in Black and Navy only

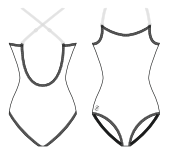
Accentuate your waistline with our stretchy microfiber belt, available in 27 colors to match your dance outfit. The perfect accessory to showcase your silhouette.
Microfiber





AZTEC

Children: 8/10 - 10/12
Ladies: XS - S - M - L - XL - XXL



Un-lined camisole undergarment, designed to provide additional coverage and support. Equipped with clear, detachable straps. Soft Microfiber- Cotton-lined gusset



ALIAS

Children: 8/10 - 10/12
Ladies: XS - S - M - L - XL - XXL



Nude pull-on athletic bra, with detachable clear straps. Soft Microfiber



ADELA

Children: 8/10 - 10/12 - 12/14
Ladies: XS - S - M - L - XL - XXL



Comfortable high-waisted brief with soft elastic at the waist and elastic finishes on the thighs. Soft Microfiber - Cotton-lined gusset



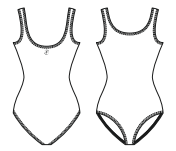




Microfiber



CABRIOLE

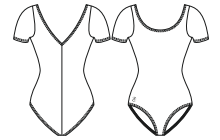


Children: 2/4 - 4/6 - 6/8 - 8/10 - 10/12 - 12/14
Ladies: XS - S - M - L - XL

Classic tank leotard with high scoop neck front and back, available in various colors.
Microfiber - Front lining

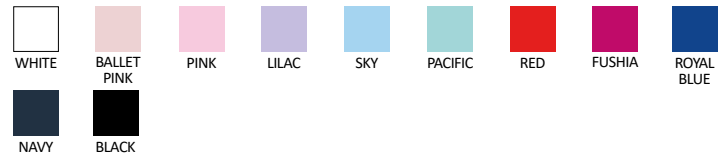


PIROUETTE



Children: 2/4 - 4/6 - 6/8 - 8/10 - 10/12 - 12/14
Ladies: XS - S - M - L - XL

Short-sleeved leotard with scoop neck and ballet cut legline.
Microfiber - Front lining



ARABESQUE



Children: 2/4 - 4/6 - 6/8 - 8/10 - 10/12 - 12/14
Ladies: XS - S - M - L - XL

3/4 length-sleeved leotard with round neckline and ballet cut legline.
Microfiber - Front lining



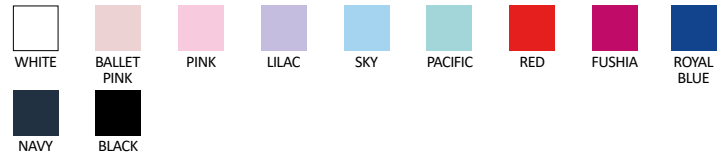


CONCERTO



Children: 2/4 - 4/6 - 6/8 - 8/10 - 10/12 - 12/14
 Ladies: XS - S - M - L - XL

Classic camisole leotard with scoop neck front and back and ballet cut legline. Available in many colors.
 Microfiber - Front lining

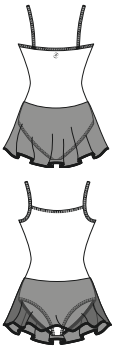


BAGATELLE



Children: 2/4 - 4/6 - 6/8 - 8/10 - 10/12 - 12/14
 Ladies: XS - S - M - L - XL

Skirted leotard with camisole top, scoop neck, and ballet cut legline. Features an attached tulle skirt.
 Microfiber - Stretch Tulle - Front lining





GLISSADE



Ladies: XS - S - M - L - XL

Leotard with wide straps and sweetheart neckline, featuring princess seams and empire waist cut.
Cotton - Elastane - Front lining



NAVY



BLACK

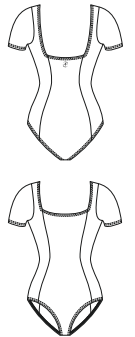


REVERENCE



Ladies: XS - S - M - L - XL

Short-sleeved leotard with square neckline and princess seams. Features a moderate legline and double-stitched seams.
Cotton - Elastane - Front lining



NAVY



BLACK

Collection PREMIÈRE Cotton

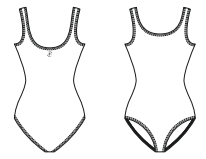




ETUDE



Children: 2/4 - 4/6 - 6/8 - 8/10 - 10/12 - 12/14
Ladies: XS - S - M - L - XL



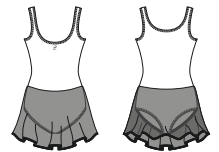
Tank leotard with scoop neck front and modest scoop back, featuring ballet cut legline and double-stitched seams. Cotton - Elastane - Front lining



ENTRECHAT



Children: 2/4 - 4/6 - 6/8 - 8/10 - 10/12 - 12/14



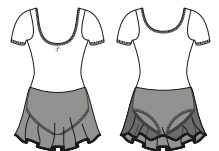
Skirted tank leotard with scooped neckline and ballet cut legline. Features an attached tulle skirt. Cotton- Elastane - Stretch Tulle - Front lining



ADAGE



Children: 2/4 - 4/6 - 6/8 - 8/10 - 10/12 - 12/14



Skirted leotard with short sleeves and scoop neck, featuring an attached tulle skirt. Cotton - Elastane - Stretch Tulle - Front lining





PRELUDE

Children: 2/4 - 4/6 - 6/8 - 8/10 - 10/12 - 12/14
Ladies: XS - S - M - L - XL

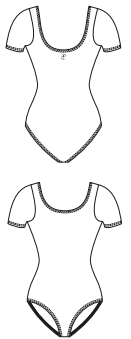
Camisole leotard with scoop neck and ballet cut legline, featuring double-stitched seams for durability.
Cotton - Elastane - Front lining



OPERA

Children: 2/4 - 4/6 - 6/8 - 8/10 - 10/12 - 12/14
Ladies: XS - S - M - L - XL

Short-sleeved leotard with scoop neck and ballet cut legline, perfect for studio work.
Cotton - Elastane - Front lining



Collection Allure



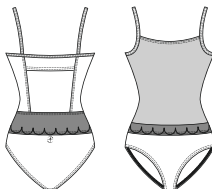


COLETTE

Children: 10/12 - 12/14

Ladies: XS - S - M - L

Camisole leotard with square open back and see through design, for both a timeless and modern look. Includes an inner supportive elastic band and discreet pocket for removable bra inserts. Microfiber - Embroidered Stretch Tulle - Front lining



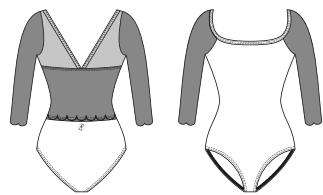
WHITE MOKA BURGUNDY NAVY BLACK



NEREA

Children: 10/12 - 12/14
Ladies: XS - S - M - L

3/4 sleeve leotard with a see-through design and a V-shaped tulle back panel, both stylish and functional. Includes an inner supportive elastic band and discreet pocket for removable bra inserts. Microfiber - Embroidered Stretch Tulle - Stretch Tulle - Front lining



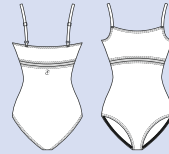




SEPIK 

Ladies: XS - S - M - L

Camisole leotard in heathered jersey with adjustable straps. Underbust and side panels for a sporty look. Includes an inner elastic band and a discreet pocket for removable bra inserts. Microfiber- Stretch Tulle- Front lining

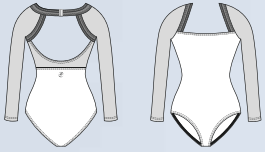


Collection
Tilda

SEPHIRA

Ladies: XS - S - M - L

Raglan long-sleeve leotard in heathered jersey with open back, metal clasp, inner elastic band, and discreet bra insert pocket.
Microfiber- Stretch Tulle- Front lining

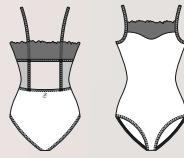


JASMIN

Ladies: XS - S - M - L

Embroidered tulle panels with sea flower details add delicate transparency to this camisole leotard, combining elegance and comfort.

Microfiber - Embroidered Stretch Tulle - Stretch Tulle - Front lining

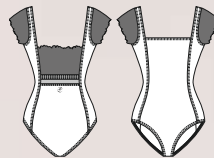


LISERON

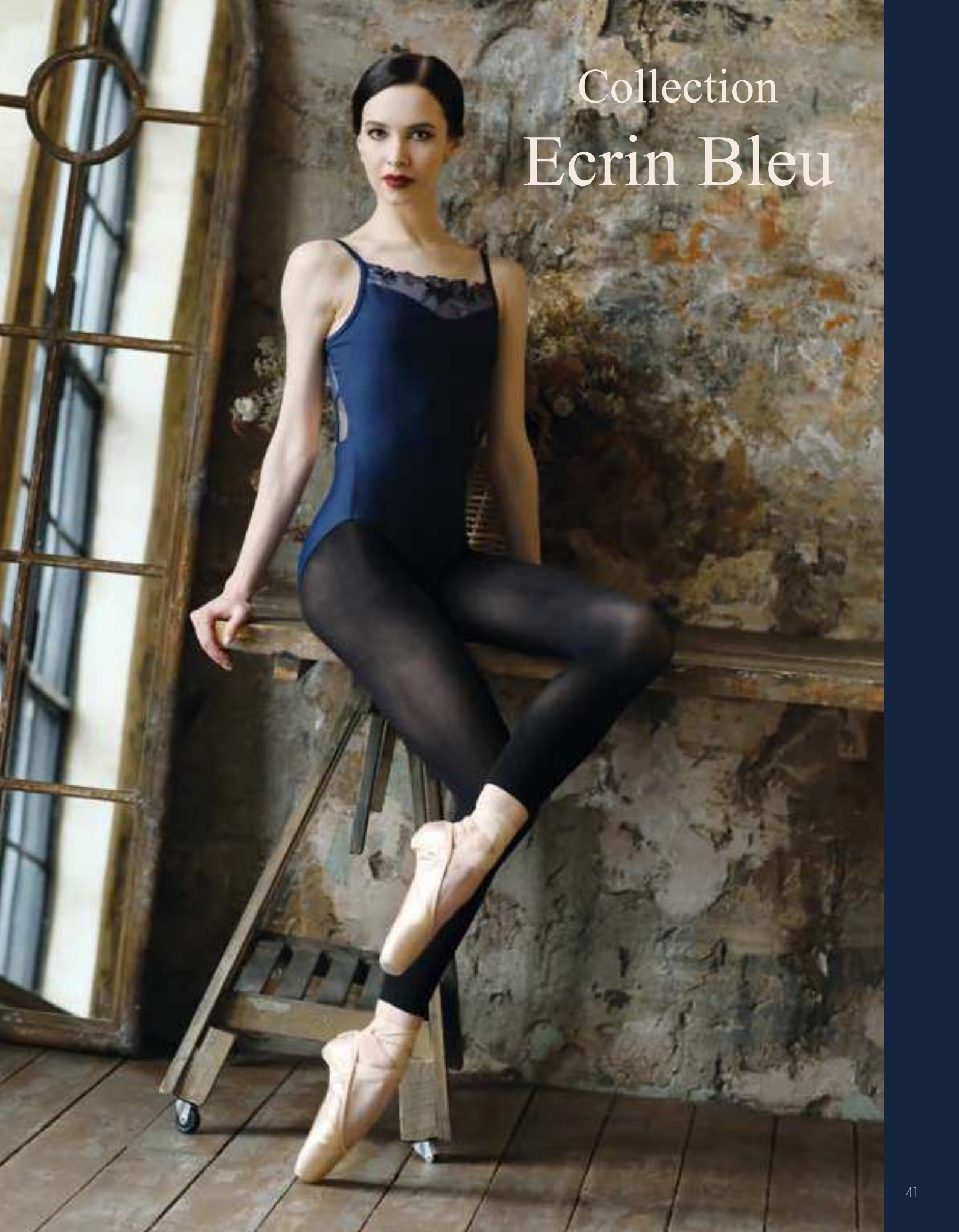
Ladies: XS - S - M - L

Leotard with embroidered stretch tulle on the back, shoulders, and waist, featuring a square neckline and structured design.

Microfiber - Embroidered Stretch Tulle - Stretch Tulle - Front lining



Collection
Ecrin Bleu



FELICITE

Ladies: XS - S - M - L

Fancy high-neck long-sleeved leotard with front zipper. Sheer back, sleeves, and shoulders reveal the skin and contour the body with large flowers, like a tattoo.

Microfiber - Flocked Stretch Tulle - Front lining





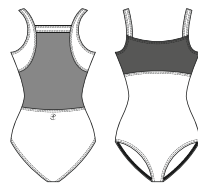




LAIKA

Ladies: XS - S - M - L

Fancy wide straps leotard cut-out along the bust, detailed with rose pattern flocked tulle front yoke. The back of the leotard is made of sheer stretch tulle, attached by solid color microfiber bands. Microfiber - Flocked Stretch Tulle - Front lining



BLACK



*Opt for refined
arabesques*



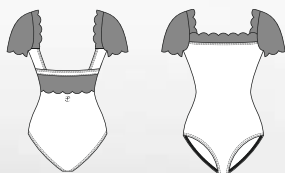




EMMA

Ladies: XS - S - M - L

Chic cap sleeve leotard in flocked light beige mesh with an open square mid-back and lace-like panel. Classic ballet leg cut. Microfiber - Flocked Stretch Tulle - Front Lining



BLACK

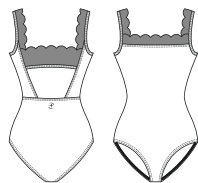




ARLETTY

Ladies: XS - S - M - L

Tank-style leotard in lace-like flocked mesh with back support that can hide a nude bra. Open lower back adds a unique touch. Microfiber - Flocked Stretch Tulle - Front lining





Collection **Précieuse**

as precious as you



ETERNA

Children: 8/10 - 10/12 - 12/14

Ladies: XS - S - M - L

Camisole leotard with straight neckline, scoop back and floral embroidered tulle overlay. Includes a discreet pocket for removable bra inserts.

Microfiber - Embroidered Stretch Tulle
- Front lining

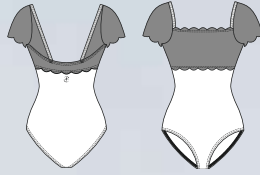




NARCISSE

Children: 8/10 - 10/12 - 12/14
Ladies: XS - S - M - L

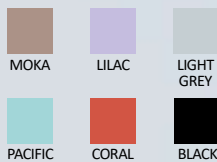
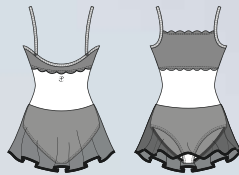
Short-sleeve leotard in embroidered tulle with a deep open back. Includes a discreet pocket for removable bra inserts.
Microfiber - Embroidered Stretch Tulle- Front lining



SERENITE

Children: 8/10 - 10/12 - 12/14
Ladies: XS - S - M - L


Skirted camisole leotard with straight neckline, scoop back and floral embroidered tulle overlay.
Microfiber- Embroidered Stretch Tulle- Stretch Tulle - Front lining





Collection Envol



A ballerina is captured in a graceful pose, performing a high leg extension. She is wearing a teal leotard with a floral pattern on the back and white tights. Her right leg is raised vertically, supported by her left hand. She is looking towards the camera with a serene expression. The background is a soft, neutral-toned studio setting.

*Grace and Purity. Let yourself
be carried away by the softness
of our delicate ENVOL
collection.*



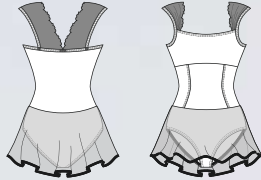
KAMAE

Children: 6/8 - 8/10 - 10/12 - 12/14

Ladies: XS - S - M - L

KAMAE dress, a skirted version of the GEMMA leotard, features wide straps with embroidered lace and front seams for enhanced fluidity.

Microfiber - Embroidered Stretch Tulle - Stretch Tulle - Front Lining



WHITE



LILAC



PACIFIC







GEMMA

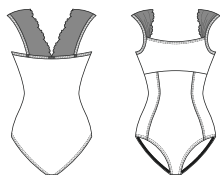
Children: 6/8 - 8/10 - 10/12 - 12/14

Ladies: XS - S - M - L

*not available in children size

Tank leotard with wide straps and embroidered lace. Princess seams shape the silhouette, and the straight neckline provides support.

Microfiber - Embroidered
Stretch Tulle - Front Lining



WHITE



LILAC



PACIFIC



BLACK/
BRONZE



BLACK/
BLUE





*Grace and Purity. Let yourself be carried away by **the softness of our delicate ENVOL collection.***



REINE

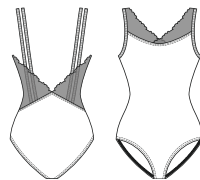
Children: 6/8 - 8/10 - 10/12 - 12/14

Ladies: XS - S - M - L

*not available in children size

Leotard in embroidered tulle and microfiber. Features double straps, tulle-accented neckline, and a V-back.

Microfiber - Embroidered
Stretch Tulle - Front Lining



WHITE



LILAC



PACIFIC



BLACK/
BRONZE



BLACK/
BLUE

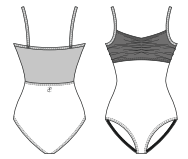
Collection
Mademoiselle





CIRNUM

Children: 6/8 - 8/10 - 10/12 - 12/14
Ladies: XS - S - M - L

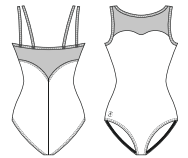


Floral-patterned leotard with a tulle-covered microfiber panel for bust support. The back reveals skin with tulle extending to the waist.
Microfiber - Embroidered Stretch Tulle - Front Lining



BELMINE

Children: 6/8 - 8/10 - 10/12 - 12/14
Ladies: XS - S - M - L



Double-straped camisole leotard with embroidered tulle connecting the sweetheart neckline and tapered back. Made from elastane microfiber.
Microfiber - Embroidered Stretch Tulle - Front lining



LOBELIA

Children: 4/8 - 8/12
Ladies: XS/S - M/L



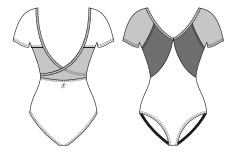
Short ballet skirt in stretch tulle with embroidered floral prints and an elasticized waistband. Complements leotards from the same line or any other solid color leotard.
Embroidered Stretch Tulle





MIOSOTIS

Children: 6/8 - 8/10 - 10/12 - 12/14
Ladies: XS - S - M - L

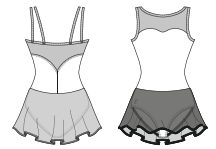


Short-sleeved leotard with V-shape front and back, crossover tulle panel, and embroidered tulle over the bust.
Microfiber - Embroidered Stretch Tulle - Front Lining



ALYSON

Children: 6/8 - 8/10 - 10/12 - 12/14
Ladies: XS - S - M - L



Skirted leotard in elastane microfiber with double straps and transparent tulle panels. The two-fabric skirt features transparent tulle in front and embroidered tulle in back.
Microfiber - Embroidered Stretch Tulle - Stretch Tulle - Front Lining



CYPELLA

Ladies: XS/S - M/L



Asymmetrical ballet skirt, short in front and medium in back, made from embroidered stretch tulle. Finished waistband with bow at the back.
Microfiber - Embroidered Stretch Tulle











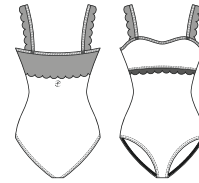
ERINE

Children: 6/8 - 8/10 - 10/12 - 12/14

Ladies: XS - S - M - L

Tank leotard with a scalloped trim lace overlay.

Microfiber - Stretch Lace - Front lining



WHITE



LILAC



LIGHT GREY



PACIFIC



BLACK

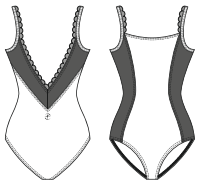


EVIDENCE

Children: 6/8 - 8/10 - 10/12 - 12/14

Ladies: XS - S - M - L

A tank-style camisole leotard with plunging V-shaped back, with a delicate lace trim. Microfiber - Stretch Lace - Front lining



WHITE



LILAC



LIGHT GREY



PACIFIC



BLACK





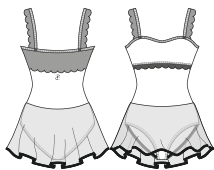


ETINCELLE

Children: 6/8- 8/10- 10/12- 12/14

Ladies: XS- S- M- L

A tank-style dress featuring the elegant scalloped lace trim overlay and four-way stretch tulle skirt.
Microfiber - Stretch Lace - Stretch Tulle - Front lining



WHITE



LILAC



LIGHT
GREY



PACIFIC



BLACK



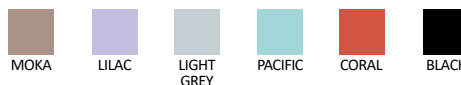
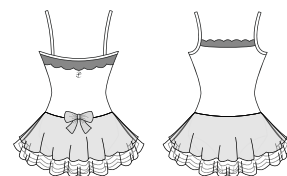
*A touch of magic, graceful in every move
- as precious as you*

CHARME

Children: 4/6 - 6/8 - 8/10 - 10/12

Camisole ballet baby leotard with a tutu featuring 4 layers of tulle ruffles and floral embroidered tulle. Cute bow detail at the back.

Microfiber - Stretch Tulle -
Embroidered Stretch Tulle - Glittering
Tulle - Front lining





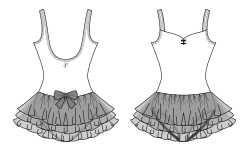
NOISETTE



Children: 2/4 - 4/6 - 6/8 - 8/10 - 10/12 - 12/14

A pinch-front children's tutu dress with three layers of tulle and bow accent. This beautiful dress is perfect for the youngest dancer.

Microfiber - Glittering Tulle - Front lining



WHITE



PINK



SKY



ROSE



BLACK



NUAGE

Children: 2/4 - 4/6 - 6/8 - 8/10 - 10/12 - 12/14

Beautiful pull-over children's tutu with three layers of tulle and a bow decal.

Microfiber - Glittering Tulle



WHITE



PINK



SKY



ROSE



BLACK

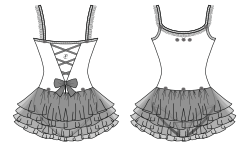


PRALINE

Children: 2/4 - 4/6 - 6/8 - 8/10 - 10/12 - 12/14

This tutu is a stylish and classy take on a kid's fashion. This four-layer tutu dress offers soft ruffle, mini roses and crisscross detail. Any little ballerina would love this dress.

Microfiber - Glittering Tulle - Front lining



WHITE



PINK



SKY



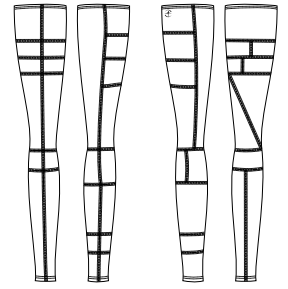
ROSE







SUPERBE



COLOR 6
BLACK
GREY
WHITE



COLOR 7
PEACOCK BLUE
OCEAN
WHITE



COLOR 8
BLACK
AMETHISTE
BYZANTINE

Children: 8/12
Ladies: XS/S - M/L

Eye-catching patchwork design that offers extreme comfort. These leg warmers are sure to become a favorite.
Knitted Acrylic Elastane



TULIPE



COLOR 6
BLACK
GREY
WHITE



COLOR 7
PEACOCK BLUE
OCEAN
WHITE



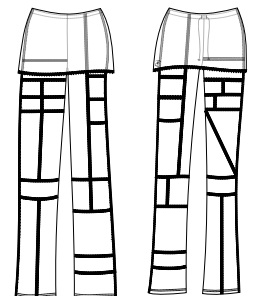
COLOR 8
BLACK
AMETHISTE
BYZANTINE

Children: 8/10 - 10/12
Ladies: XS - S - M - L

Stylish stretch knit crop-top featuring comfortable patchwork design and scoop neckline.
Knitted Acrylic Elastane



SYRMA



COLOR 6
BLACK
GREY
WHITE



COLOR 7
PEACOCK BLUE
OCEAN
WHITE



COLOR 8
BLACK
AMETHISTE
BYZANTINE

Children: 8/10 - 10/12
Ladies: XS - S - M - L

Eye-catching patchwork design that offers extreme comfort and stretch. These fold-over boot-cut pants are perfect from street to studio.
Knitted Acrylic Elastane

Wear Mei

Designed in France

WARM UP & ACTIVE WEAR

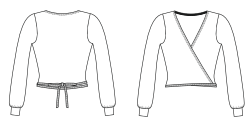




GUIMAUVE

Children: 4/6 - 6/8 - 8/10 - 10/12

V-neck cardigan with puffed sleeves, ribbed cuffs, and a back drawstring for comfort and elegance.
Acrylic Elastane Knit - Mettalic Lurex



BALLET
PINK

LILAC





BERGAMOTE

Children: 4/6 - 6/8 - 8/10 - 10/12



Loose-fit pants with an elastic waistband and back bow, tapering at the calves for warmth and style.

Acrylic Elastane Knit - Mettalic Lurex



BALLET PINK



LILAC



CALISSON

Children: 4/6 - 6/8 - 8/10 - 10/12



Cozy shorts with a soft waistband and back bow, offering elegance and comfort.

Acrylic Elastane Knit - Mettalic Lurex



BALLET PINK



LILAC





DANUBE

Ladies: XS - S - M - L



V-neck, long-sleeved top with soft diamond-pattern knit, one-tone sleeves, and adjustable drawstring. Ideal for layering with a leotard or warm-ups. Knitted acrylic wool



BLACK
BEIGE

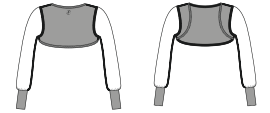


BLACK
DARK GREY



MELEZE

Ladies: XS - S - M - L



Lightweight knit shrug with asymmetrical diamond pattern, fitted front and fuller sleeves with wristbands. Perfect for ballet class warmth. Knitted acrylic wool



BLACK
BEIGE

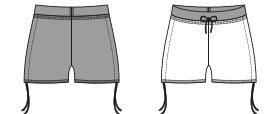


BLACK
DARK GREY



MAKALU

Ladies: XS - S - M - L



Two-tone knitted warm-up shorts with adjustable waist and side drawstring, tonal waist, and supportive back panel for stretching. Knitted acrylic wool



BLACK
BEIGE

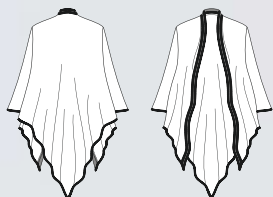


BLACK
DARK GREY

EREBUS

Ladies: One size

Lightweight, open-textured knit with a flowing style, perfect for draping around waist or shoulders during dance classes.
Knitted acrylic wool



BLACK
BEIGE



BLACK
DARK GREY



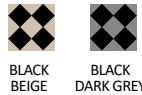


TAGE



Ladies: XS/S - M/L

Beautiful diamond-patterned legwarmers with a secure band and elongating back trim, perfect for warm-ups. Knitted acrylic wool

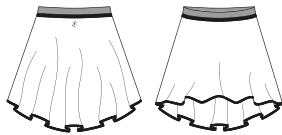


BLACK BEIGE

BLACK DARK GREY

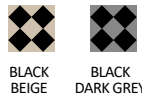


FILAO



Ladies: XS/S - M/L

Flowing two-tone skirt with a shorter front and longer back for comfort and style. Knitted acrylic wool



BLACK BEIGE

BLACK DARK GREY

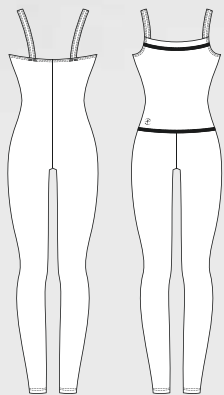


CAPELLA

Children: 8/10 - 10/12

Ladies: XS - S - M - L

This warm up knit ankle length romper will keep you warm and comfortable in dance class.
Knitted Acrylic Elastane



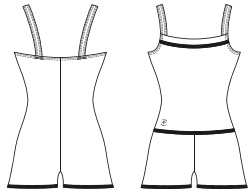
ALOES

Children: 8/10 - 10/12

Ladies: XS - S - M - L

Our knitted romper is a versatile garment that can also be rolled down to the waist and worn as shorts.

Knitted Acrylic Elastane



GREY



BLACK

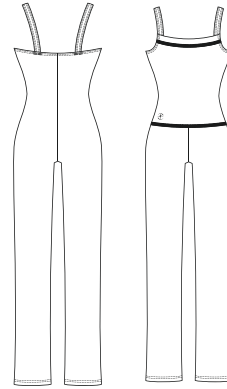
CALOU

Children: 8/10 - 10/12

Ladies: XS - S - M - L

Our knit boot-leg pant romper is a perfect addition to your class apparel.

Knitted Acrylic Elastane



GREY



AMETHISTE



BLACK





NAYA

Children: 8/10 - 10/12
Ladies: XS - S - M - L



Short sleeve crop top sweater with an eye-catching design and comfortable cut.
Knitted Acrylic Elastane



CEYLAN

Children: 8/10 - 10/12
Ladies: XS - S - M - L



Acrylic warm-up shorts. Elastic on the waist for a secure fit.
Knitted Acrylic Elastane



TIARA

Children: 8/10 - 10/12
Ladies: XS - S - M - L



Gorgeous, warm and comfortable flable over shorts including a waist drawstring with a rolled hem.
Knitted Acrylic Elastane

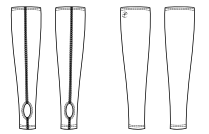




IZALIA

Children: 4/8 - 8/12
Ladies: XS/S - M/L

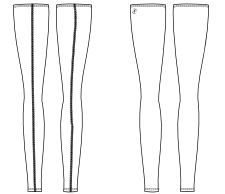
Short stirrup leg warmers.
Knitted Acrylic Elastane



CRISTAL

Children: 8/12
Ladies: XS/S - M/L

Full length skinny fit leg warmers.
Soft and comfortable.
Knitted Acrylic Elastane



CRYSALIDE

Children: 8/10 - 10/12
Ladies: XS - S - M - L

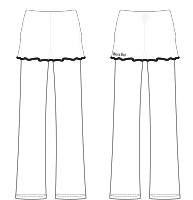
A unique and flattering sweater
waistband folds over these warm
tights with a drawstring waist.
Knitted Acrylic Elastane



UTAMI

Children: 8/10 - 10/12
Ladies: XS - S - M - L

These warm up pants feature a
boot cut style with a fold over
waistband.
Knitted Acrylic Elastane



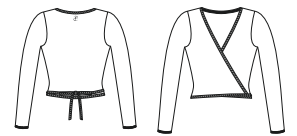
Collection PREMIÈRE
Knitwear





MENUET

Children: 4/6 - 6/8 - 8/10 - 10/12
Ladies: XS - S - M - L - XL



Classic full-sleeve wrap-around top with adjustable self-ties, ideal for layering over a leotard. Made from soft knitted fabric for comfort and a perfect fit. Knitted Acrylic Elastane



SONATE

Children: 4/6 - 6/8 - 8/10 - 10/12
Ladies: XS - S - M - L - XL

* Only available in adult sizes
** Only available in child sizes



Soft, snug-fitting shorts with a ribbed fold-over waistband, adding warmth and texture to rehearsals. Designed to retain elasticity over time. Knitted Acrylic Elastane



ATTITUDE

Children: 4/8 - 8/12
Ladies: XS/S - M/L

* Only available in adult sizes
** Only available in child sizes



Classic leg warmers with a soft elastic cuff at the thighs, staying in place during intense rehearsals. Made from soft knitted fabric for comfort and a perfect fit.

Attitude child: 12" - 30 cm
Attitude adult: 18" - 45 cm
Knitted Acrylic Elastane



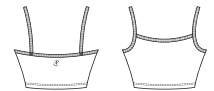


IKITA



Children: 4/6 - 6/8 - 8/10 - 10/12
Ladies: XS - S - M - L

Simple, elegant, classic short
camisole top with comfortable
waistband.
Microfiber - Front lining

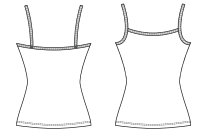


ANA



Children: 4/6 - 6/8 - 8/10 - 10/12
Ladies: XS - S - M - L

Simple, soft, microfiber camisole.
Microfiber - Front lining

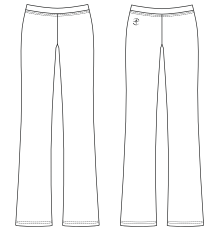


IRIS



Children: 4/6 - 6/8 - 8/10 - 10/12
Ladies: XS - S - M - L - XL - XXL

Classic U-cut jazz pants.
Comfortable elastic waist band
and soft microfiber.
Microfiber

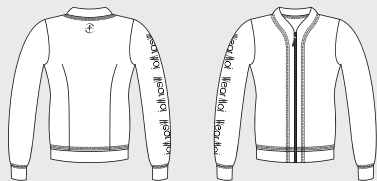




PATIENCE

Ladies: XS - S - M - L

Fitted jacket with zippered front, embellished with silver serigraphy on the right arm. Unlined.
Double Viscose Elastane Jersey



BLACK





PIVOINE

Ladies: XS - S - M - L

Soft hooded jacket with front zipper, silkscreen print on the right arm, and patch pockets. Unlined.
Double Viscose Elastane Jersey



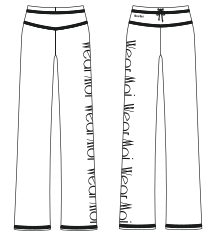
BLACK



PALOMINO

Ladies: XS - S - M - L

Straight cut pants with yokes, wide elastic waistband, and drawstring. Features topstitched hem and silkscreen print on the right leg.
Double Viscose Elastane Jersey



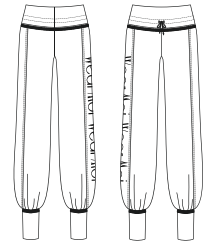
BLACK



PANDORE

Ladies: XS - S - M - L

Wide jogging pants with ankle cuffs, lapel band waist with drawstring, and silkscreen print on the right leg.
Double Viscose Elastane Jersey



BLACK

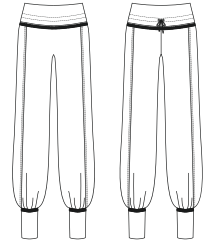


OPUS



Children: 6/8 - 8/10 - 10/12 - 12/14
Ladies: XS - S - M - L

Four-way stretch warm-up pants with fitted ankles and drawstring. Perfect for dancers or as a team uniform. Pair with Iliade jacket.
Double Viscose Elastane Jersey

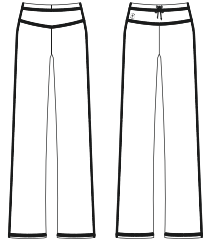


PENELOPE



Children: 6/8 - 8/10 - 10/12 - 12/14
Ladies: XS - S - M - L

Warm-up pants with elastic waist band and drawstring. Wide leg for a more relaxed and comfortable fit.
Double Viscose Elastane Jersey



ILIADE



Children: 6/8 - 8/10 - 10/12 - 12/14
Ladies: XS - S - M - L

Four-way stretch warm-up jacket with front zip and dart seams, perfect for warmth between rehearsals. Pairs with Opus pants.
Double Viscose Elastane Jersey







Wear Moi

Designed in France

MEN & BOYS

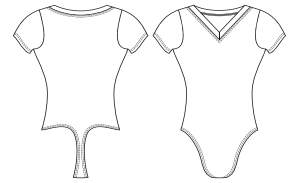




CENTAUR



Children: 4/6 - 6/8 - 8/10 - 10/12 - 12/14
Men: XS - S - M - L - XL



Short-sleeved men's leotard with a V-neck, no front cup, and a thong back for a seamless fit under tights. Made from elastane microfiber for maximum motion.
Microfiber



WHITE



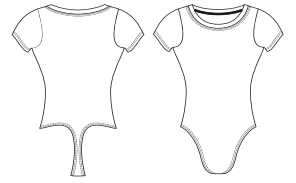
BLACK



LUPIN



Children: 4/6 - 6/8 - 8/10 - 10/12 - 12/14
Men: XS - S - M - L - XL



This short-sleeved men's leotard features a round neckline with slits and is made from elastane microfiber for maximum comfort. The thong back is imperceptible under tights, ensuring no visible lines.
Microfiber



WHITE



DARK GREY



BURGUNDY



NAVY



BLACK

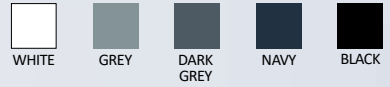
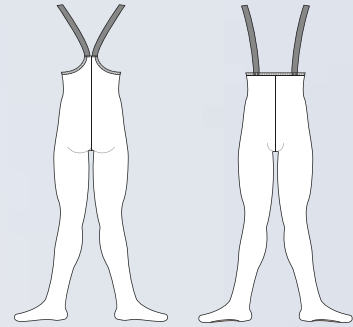




WILSON

Men: XS - S - M - L - XL

Convertible tights with «Soft Touch» elastic straps and swimmer back. Features seamless foot transition and reinforced inseam gusset. Heavyweight Stretch Microfiber

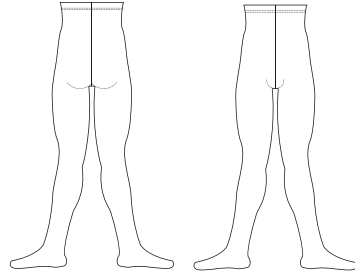




SOLO

Children: 4/6 - 6/8 - 8/10 - 10/12
Men: XS - S - M - L - XL

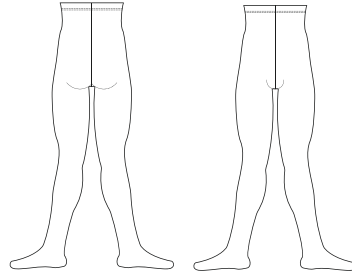
Heavyweight men footed tights with a ballet-style high waist.
Cotton- Elastane



ORION

Children: 4/6 - 6/8 - 8/10 - 10/12
Men: XS - S - M - L - XL

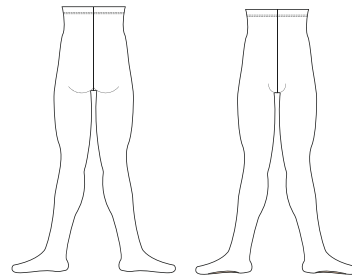
Heavy weight microfiber men's footed tights and a ballet waist.
Heavyweight Stretch Microfiber



HIDALGO

Children: 10/12
Men: XS - S - M - L - XL

Heavyweight elastane convertible tights for men with a side opening for easy transition from footed to footless tights.
Heavyweight Stretch Microfiber



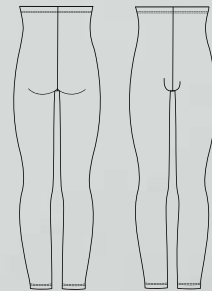


ALBAN

Children: 4/6 - 6/8 - 8/10 - 10/12

Men: XS - S - M - L - XL

Men's heavyweight elastane footless tights with reinforced inseam gusset.
Heavyweight Stretch Microfiber



WHITE



GREY



DARK
GREY



NAVY



BLACK

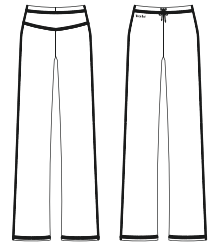


PRESTON



Children: 6/8 - 8/10 - 10/12 - 12/14
Men: XS - S - M - L

Men's warm-up pants with elastic waist band and drawstring. Wide leg for a more relaxed and comfortable fit.
Double Viscose Elastane Jersey



NAVY



BLACK

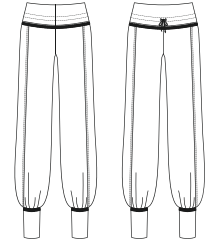


BELEM



Children: 6/8 - 8/10 - 10/12 - 12/14
Men: XS - S - M - L

Men's four-way stretch warm-up pants with fitted ankles and drawstring. Ideal for dancers and team uniforms. Pair with Malone jacket.
Double Viscose Elastane Jersey



NAVY



BLACK



MALONE



Children: 6/8 - 8/10 - 10/12 - 12/14
Men: XS - S - M - L

Men's four-way stretch warm-up jacket with a front zip and double dart seams. Ideal for staying warm or as a team uniform. Pairs well with Belem pants.
Double Viscose Elastane Jersey



NAVY



BLACK



ALCYONE

Men: XS - S - M - L

Men's wide elastic 12,50 cm waistband.
Offering effortless support and a fitted silhouette.
Elastic Elastane



DARK
BEIGE

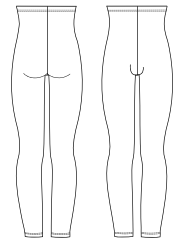
BLACK



HAMADA

Children: 4/6 - 6/8 - 8/10 - 10/12
Men: XS - S - M - L - XL

Heavyweight footless tights for men with a roll-down high waist or suspenders for class or performance.
Cotton- Elastane



WHITE

GREY

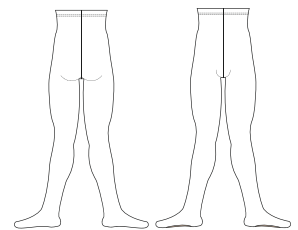
BLACK



CLOVIS

Children: 4/6 - 6/8 - 8/10 - 10/12
Men: XS - S - M - L

These men's convertible tights feature a comfortable opening under the arch, avoiding seams under the foot for optimal comfort.
Cotton - Elastane



WHITE

GREY

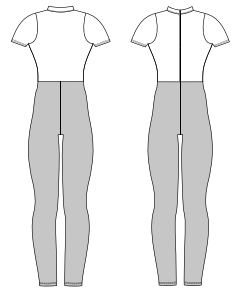
BLACK



ELAN

Children: 6/8 - 8/10 - 10/12
Men: XS - S - M - L - XL

Men's two-tone footless unitard.
High neck with zipper front.
Cotton - Elastane



WHITE /
GREY



BLACK /
NAVY

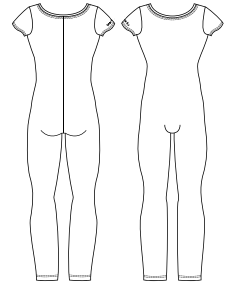


ATLAS



Children: 8/10 - 10/12 - 12/14
Men: XS - S - M - L - XL

Cap sleeved men's unitard with a
wide neckline in front and back.
Microfiber



NAVY

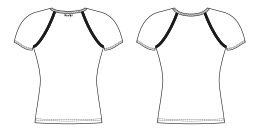


BLACK





ALPIN



Children: 4/6 - 6/8 - 8/10 - 10/12 - 12/14
Men: XS - S - M - L - XL

Raglan sleeves scoop neckline t-shirt,
fits tight and close to the body.
Microfiber



CONRAD

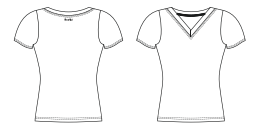


Children: 4/6 - 6/8 - 8/10 - 10/12 - 12/14
Men: XS - S - M - L - XL

An ideal uniform staple, this
crewneck cap sleeve men microfiber
shirt is anything but basic.
Microfiber



HAXO



Children: 4/6 - 6/8 - 8/10 - 10/12 - 12/14
Men: XS - S - M - L - XL

This soft microfiber, short sleeve,
V-neck T-shirt is classic and
exceptionally comfortable.
Microfiber





MERCURY

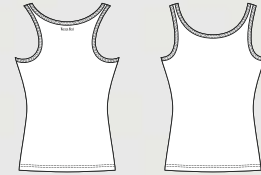


Children: 4/6 - 6/8 - 8/10 - 10/12 - 12/14

Men: XS - S - M - L - XL

This sleeveless tank top features a low-cut rounded neckline and wide back openings. The tapered fit ensures comfort and freedom of movement for dance classes.

Microfiber



WHITE



NAVY



BLACK



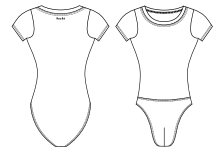


IGOR



Children: 4/6 - 6/8 - 8/10 - 10/12 - 12/14
Men: XS - S - M - L

Wide neck men's leotard with cap sleeves. Full seat bottom without front padding.
Microfiber



WHITE



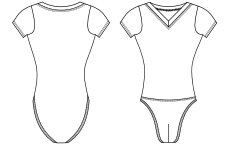
BLACK



ALTAN

Children: 4/6 - 6/8 - 8/10 - 10/12
Men: XS - S - M - L

Men's full seat leotard. V-front cotton shirt, attached front padded full seat dance belt.
Cotton - Elastane



WHITE



BLACK

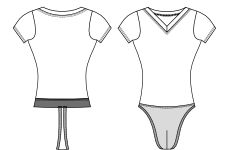


HORACIO



Children: 6/8 - 8/10 - 10/12 - 12/14
Men: XS - S - M - L - XL

One of the most requested items, full microfiber shirt and attached microfiber dance belt combination. An ideal uniform piece for all ages, perfect for class and stage.
Microfiber



WHITE



DARK GREY



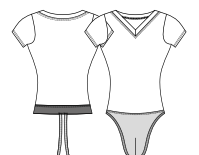
BLACK



IVAN

Children: 6/8 - 8/10 - 10/12
Men: XS - S - M - L - XL

Short sleeve V-neck cotton leotard features a built in fully front padded dance belt with thong back. An ideal uniform piece for all ages.
Cotton - Elastane



WHITE



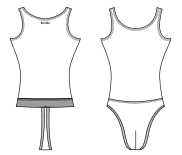
BLACK



VERSAO



Children: 6/8 - 8/10 - 10/12 - 12/14
Men: XS - S - M - L



Microfiber basic men's full tank leotard with attached thong back dance belt.
Microfiber



WHITE



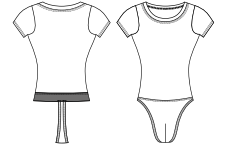
BLACK



JASON



Children: 6/8 - 8/10 - 10/12 - 12/14
Men: XS - S - M - L - XL



Short sleeve leotard with wide front and back scoop neck and built in dancebelt with thong back.
Microfiber



WHITE



NAVY



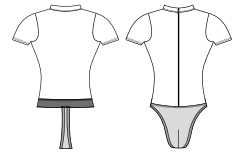
BLACK



OBERON



Children: 6/8 - 8/10 - 10/12 - 12/14
Men: XS - S - M - L - XL



Short sleeve leotard with zippered front mock turtleneck and built in dancebelt with thong back.
Microfiber



WHITE



DARK GREY



BURGUNDY



NAVY

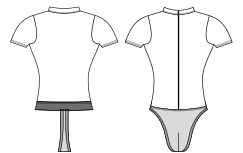


BLACK



CONDOR

Children: 6/8 - 8/10 - 10/12
Men: XS - S - M - L - XL



Short-sleeve mock turtleneck leotard with low zip front and padded dance belt with thong back.
Ideal for ballroom and ballet.
Cotton - Elastane



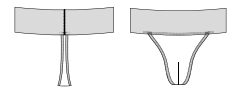
WHITE



BLACK



DANCE BELT WIDE



Men: XS - S - M - L - XL

Cotton elastane fully padded dance belt featuring a thong back and 12,5cm comfortable extra-wide elastic for added support.
Cotton - Elastane



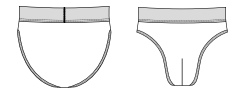
DARK
BEIGE



BLACK



DANCE BELT FULL SEAT



Children: 4/6 - 6/8 - 8/10 - 10/12 - 12/14
Men: XS - S - M - L - XL

Boys/Men's full back dance belt. Features 4cm elastic waistband, contoured front shaped to the male anatomy and full front padding.
Cotton - Elastane



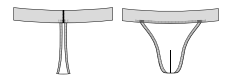
DARK
BEIGE



WALNUT



DANCE BELT NARROW



Children: 8/10 - 10/12 - 12/14
Men: XS - S - M - L - XL

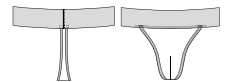
Cotton elastane fully padded dance belt features a thong back and 4cm soft touch elastic for comfort. Runs true to size.
Cotton - Elastane



DARK BEIGE WALNUT BLACK



DANCE BELT MEDIUM



Men: XS - S - M - L - XL

Cotton elastane fully padded dance belt features a thong back and 7,2cm soft touch elastic for comfort. Runs true to size.
Cotton - Elastane



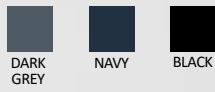
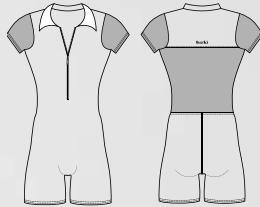
DARK BEIGE WALNUT BLACK



ROMEO

Men: XS - S - M - L

Men's unitard in microfiber with stretch mesh sleeves and back panel. Polo collar, front zip. Microfiber - Stretch Tulle



TANGO

Children: 8/10 - 10/12
Men: XS - S - M - L

This men's microfiber, racerback, tank, biketard with men's leg cut features shorter leg length and is great fitting for men. Microfiber

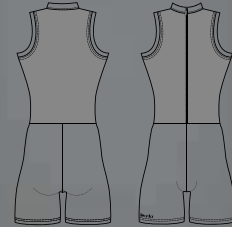


CAPRI



Men: XS - S - M - L

Men's mock turtleneck, sleeveless biketard featuring a soft front zipper edging detail and a men's leg cut. Microfiber



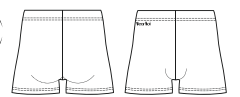
BLACK / NAVY







MARCEAU

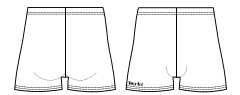


Children: 4/6 - 6/8 - 8/10 - 10/12
Men: XS - S - M - L

Basic men's fitted dance short with four-way stretch.
Microfiber



PACO

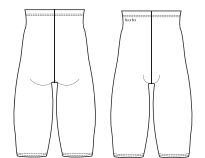


Children: 4/6 - 6/8 - 8/10 - 10/12
Men: XS - S - M - L

Men's leg cut, cotton shorter length shorts that include a comfortable elastic waistband.
Cotton - Elastane



ODEON



Children: 4/6 - 6/8 - 8/10 - 10/12
Men: XS - S - M - L

This men's microfiber over-the-knee dance pants is a perfect uniform option. Reinforced inseam gusset and secure waist elastic.
Microfiber





Wear **Mei**

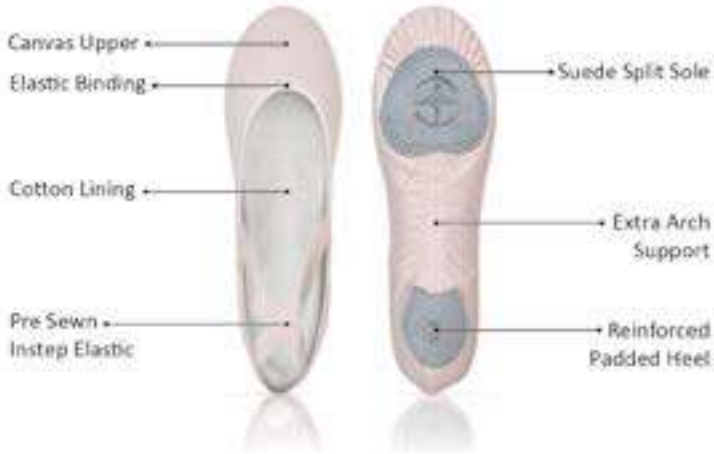
Designed in France

SHOES & TIGHTS

«Made by dancers,
for dancers»



PREMIUM STRETCH CANVAS



All sizes are unisex.

VESTA

Split-sole stretch canvas ballet shoe. Full stretch canvas is handmade and machine stitched. No drawstring binding, which provides unsurpassed comfort and flexibility. This premium shoe also offers flat stitch pleats that prevent bunching and bulging under the toes and the sole of the foot. Lower vamp shows off the arch of the foot while the stretch canvas material will hug the dancer's foot and provide a sleek and professional look. Available in three widths. We suggest opting for two sizes larger than your regular fit. If you want more support, sticking to your usual size or going one size up would be ideal.

NARROW: Size 26 to 46

MEDIUM: Size 24 to 50 - up to size 46 in LIGHT PINK

WIDE: Size 33 to 50 - not available in LIGHT PINK

No Half Size





PLUTON ♀

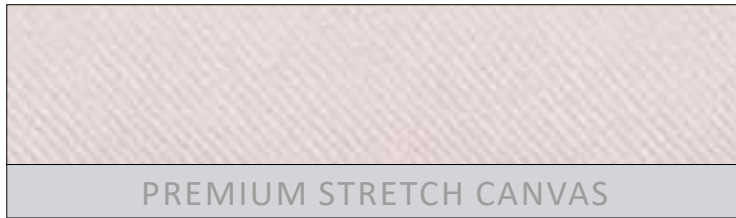
Split-sole premium "stretch" leather ballet shoe. Full glove leather is handmade and machine stitched. No drawstring binding, which provides unsurpassed comfort and flexibility. This premium shoe also offers flat stitch pleats that prevent bunching and bulging under the toes and the sole of the foot. Lower vamp shows off the arch of the foot while the premium glove leather material will hug the dancer's foot and provide a sleek and professional look. Available in three widths.



All sizes are unisex.

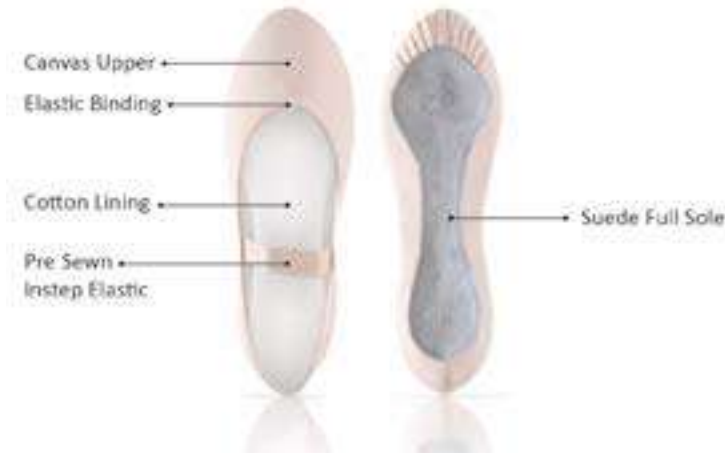
NARROW: Size 33 to 44
MEDIUM: Size 28 to 50
WIDE: Size 38 to 50
No Half Size





JUNON *

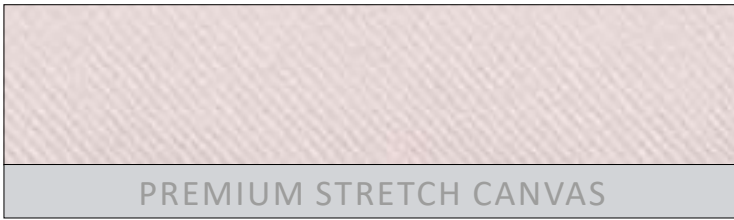
These full sole canvas ballet shoes come in both medium and narrow widths to accommodate growing feet. The full sole design will provide support for our beginner dancers as they learn how to point and arch. Durable canvas on top and sturdy leather sole at the bottom with soft interior lining for comfort.



All sizes are unisex.

NARROW: Size 26 to 43
MEDIUM: Size 23 to 43
No Half Size





CERES ♀

A perfect premium stretch canvas ballet shoe for beginners with the look and feel of our Vesta. Two widths are provided to accommodate growing feet. Split-sole ballet slipper with pre-sewn elastics.



NARROW: Size 26 to 43
MEDIUM: Size 23 to 43
No Half Size

All sizes are unisex.





PREMIUM CANVAS



All sizes are unisex.

NEPTUNE

This premium split-sole ballet shoe features high quality canvas and flexible lining for comfort. Flat stitch pleats prevent bunching and bulging under the toes and the sole of the foot. Lower vamp as well as arch stitching shows off the arch of the foot and the shape of the sole which creates a better profile under the foot. Available in two widths.

NARROW: Size 30 to 44

MEDIUM: Size 26 to 50 - up to size 46 in LIGHT PINK

No Half Size





PREMIUM LEATHER

SATURNE

Split-sole premium leather ballet shoe. Full glove leather is handmade and machine stitched. This premium shoe also features flat stitching of the pleats that prevents bunching and bulging under the toes and the sole of the foot. Lower vamp shows off the arch of the foot while the premium glove leather material will hug the dancer's foot and provide a sleek and professional look. Available in two widths.



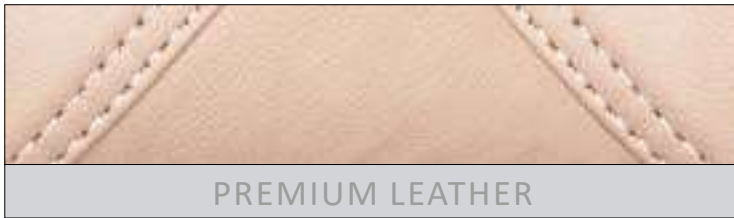
All sizes are unisex.

NARROW: Size 36 to 44

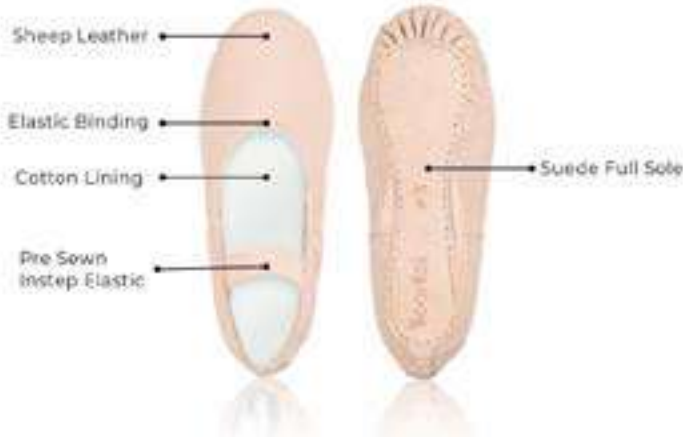
MEDIUM: Size 30 to 46

No Half Size





PREMIUM LEATHER



All sizes are unisex.

ASTRA

Discover our ASTRA soft shoes, a perfect fusion of comfort and durability. Designed to enhance your dance experience, these leather soft shoes ensure unmatched quality. Their ergonomic inner sole is equipped with specially designed foam for optimal comfort. Their durable quality, combined with innovative features, makes them the perfect choice for dancers aiming to master the basics while enjoying comfortable practice. Treat yourself to elegance and performance, and dance with confidence.

CHILD: Size 23 to 35

ADULT: Size 36 to 42

WIDTHS: N (NARROW) - M (MEDIUM) - W (WIDE)

No Half Size



BALLET
PINK





Collection Première

ASTRA

Affordable leather
ballet slippers

INSTINCT 2

Stretch leather "Turner Shoe" with a high quality elastic binding and two elastics for secure fit. This turner shoe will allow a dancer to practice and perform their best without worrying about their toes separating.

The soft leather properly follows the dancer's foot. Half-sole design with covered toes. Suede sole with pleats. Premium elastic sewn in two directions for secure fit and wear. Ideal for dancers that want a closed toe shoe without the heel constriction.

Leather

Size: XS - S - M - L - XL



SAUMON

IMPULSE 2

Stretch canvas "Turner Shoe" with a high quality elastic binding and two elastics for secure fit. This turner shoe will allow a dancer to practice and perform their best without worrying about their toes separating.

Stretch canvas properly follows the dancer's foot. Half-sole design with covered toes. Suede sole with pleats. Premium elastic sewn in two directions for secure fit and wear. Ideal for dancers that want a closed toe shoe without the heel constriction.

Stretch canvas

Size: XS - S - M - L - XL



DARK PINK

TAN

WALNUT

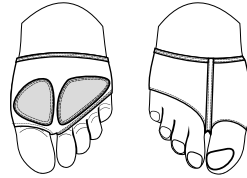


PEGASUS

Innovative, perforated microfiber material providing an invisible look in class and on stage. This breathable modern-style shoe will allow a dancer to have support, padding on the ball of the foot as well as connection to the floor with an open-toe design. It separates the toe from rest of foot and provides a snug, glove-like fit with its premium elastic binding.

Perforated microfiber

Size: XS - S - M - L - XL - XXL



DEMI-POINTE

The Demi-Pointe is a wonderful way for a dancer **to transition** from a Vesta or Pluton ballet slipper to one of Wear Moi's popular pointe shoe styles.

This satin shoe is handmade in the **turned construction method** and features evenly spaced pleats on the bottom/front of the shoe.

The Demi-Pointe contains a leather sole and a **lightweight box toe**, like traditional pointe shoes. The most important thing to remember about a Demi-Pointe is that **it does not contain a shank** - the most vital part of a pointe shoe to stand "en pointe". The most effective use of a Demi-Pointe is when it is part of the syllabus required by a school or conservatory, where a teacher can use this tool in the training process towards pointe work. Typically, teachers will recommend ballet slippers at the barre and a Demi-Pointe for center work one year before the student advances to "full" pointe. This allows the foot to **become conditioned to the feel of a pointe shoe**.

In addition, a Demi-Pointe develops and strengthens muscles in preparation for full pointe work. Also, the young dancer becomes familiar with tying their ribbons. The Demi-Pointe is available with pre-stitched, high-quality **satin or cotton ribbons** free of charge.

Demi-Pointe's sizing follows the **UK sizing system**.

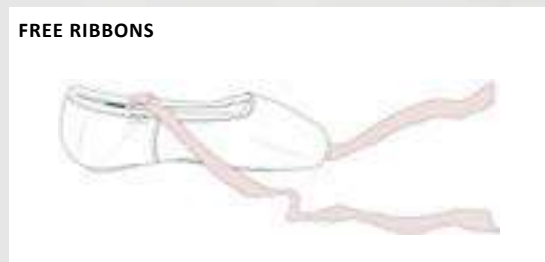
DEMI-POINTE

Satin demi-pointe shoes. Special box for beginners with a U cut throat and no shank. Excellent pre-pointe shoe to develop and strengthen the muscles in preparation for full pointe work. Should never be used to go "en pointe". Elastic drawstring.



SAUMON

SIZE	WIDTH	FREE RIBBONS
2 to 7	medium X wide XX extra wide XXX x extra wide XXXX	available with pre-stitched satin or cotton



DEMI-POINTE MORE OPTIONS SIZE

If your size does not match our core sizing, you have more size options to order, ranging from 13 to 9.

	MORE OPTIONS			STOCK ITEMS											MORE OPTIONS			
SIZE UK	13	1	1.5	2	2.5	3	3.5	4	4.5	5	5.5	6	6.5	7	7.5	8	8.5	9
SIZE EUR	32	33	33.5	34	35	35.5	36	36.5	37	38	39	39.5	40	41	41.5	42	42.5	43
SIZE JAPAN	19.8	20.4	20.8	21.1	21.8	22.1	22.4	22.8	23.1	24.2	24.9	25.5	25.8	26.4	26.8	27.2	27.5	27.8
SIZE US	1	3.5	4	4.5	5	5.5	6	6.5	7	7.5	8	8.5	9	9.5	10	10.5	11	11.5

By **ARIAL** Wear Mei

Boasting a universal fit, the shoe is pre-arched and features clean lines, a low crown, and a U-shaped throat. The sole's new design enhances grip for better floor adhesion.

ARIAL stands out for its unmatched comfort, thanks to the ultra-soft, moisture-wicking inner lining with a peach-skin effect. Inside, a reinforced platform and soft tip pad provide additional cushioning, while high wings support the metatarsals.

ARIAL's flexible shanks allow smoother transitions through demi-pointe, providing stability while feeling light and agile. Its lightweight design allows it to fit most feet effortlessly, requiring minimal adjustments from the dancer.

Arial is available with pre-stitched, high-quality satin or cotton ribbons free of charge.

Arial's sizing follows the **UK sizing system**.

Elastic drawstring encased in a cotton binding



ARIAL
Comfort Meets Performance

ARIAL

EXTRA SOFT

Arial Extra Soft shank provides minimal support to the arch and is ideal for dancers transitioning from a demi-pointe shoe to their first pair of pointe shoes. Additionally, this shank is suited for dancers with tight ligaments or an underdeveloped arch.






 SAUMON

SIZE	WIDTH	FREE RIBBONS
1 to 8	narrow N medium X wide XX extra wide XXX x extra wide XXXX	satin or cotton

	→	HIGH WINGS
	→	EXTRA SOFT
	→	FULL SHANK

LOW PROFILE BOX

	 TEXON
	 LEATHER

BINDING: ELASTIC DRAWSTRING

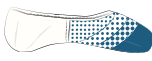


ARIAL SOFT

Arial Soft shank provides light support to the arch and is ideal for dancers with tight ligaments or an underdeveloped arch. In most cases, a "beginner" who is starting pointe work will be best served with a soft shank. The minimal support provided by a soft shank will allow the dancer to stretch their ligaments to enable the dancer to stand fully "on top" of their platform. In other cases, a "seasoned" dancer with very tight ligaments may continue to wear a soft shank.







SAUMON

SIZE	WIDTH	FREE RIBBONS
1 to 8	narrow N medium X wide XX extra wide XXX x extra wide XXXX	satin or cotton

	→	HIGH WINGS
	→	SOFT
	→	FULL SHANK

LOW PROFILE BOX

		TEXON
		TEXON
		LEATHER

BINDING: ELASTIC DRAWSTRING

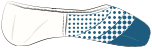


ARIAL MEDIUM











Arial Medium shank provides ample support to the arch for most dancers. For dancers with pliable ligaments, a medium shank allows them to stand "on top" of their platform with great ease. The three-quarter cut shank provides the utmost contact to the arch for maximum support while "en pointe". The specially designed shank provides the utmost contact to the arch for maximum support.



SAUMON

SIZE	WIDTH	FREE RIBBONS
1 to 8	narrow N medium X wide XX extra wide XXX x extra wide XXXX	satin or cotton

	→	HIGH WINGS
	→	MEDIUM
	→	3/4 SHANK

LOW PROFILE BOX							
	<table border="0"> <tr> <td></td> <td>TEXON</td> </tr> <tr> <td></td> <td>CARDBOARD FIBER 2.0</td> </tr> <tr> <td></td> <td>LEATHER</td> </tr> </table>		TEXON		CARDBOARD FIBER 2.0		LEATHER
	TEXON						
	CARDBOARD FIBER 2.0						
	LEATHER						

BINDING: ELASTIC DRAWSTRING

ARIAL HARD

Arial Hard shank supports a malleable arch with stretched ligaments. For the best support for this type of arch, a hard shank will provide the most significant support. In addition, the shank must conform to the foot's arch. The three-quarter cut shank provides the utmost contact to the arch for maximum support while "en pointe". The specially designed shank provides the utmost contact to the arch for maximum support.







SAUMON

SIZE	WIDTH	FREE RIBBONS
1 to 8	narrow N medium X wide XX extra wide XXX x extra wide XXXX	satin or cotton

	→	HIGH WINGS
	→	HARD
	→	3/4 SHANK

LOW PROFILE BOX

		TEXON
		CARDBOARD FIBER 2.5
		LEATHER

BINDING: ELASTIC DRAWSTRING



Sleek and elegant, the Alfa pointe shoe is ideal for the **moderate-shaped Greek or Roman foot**, where the second toe predominates or two toes of equal length. Handmade in the classic **turned construction** method (made inside out) by craftsmen trained in age-old European shoemaking traditions. Dancers embrace Alfa worldwide. Its clean lines contribute to a **moderate crown height with lowered side and heel measurements**.

An open **U-shaped throat** provides freedom in the vamp area. The throat of the pointe shoe features an **elastic drawstring encased in a cotton binding**. Its **reinforced platform ensures extended wear**, while a silicone gel tip pad applied to the inside of the shoe's platform offers additional comfort.

High wings provide lateral support to the metatarsals. A polyurethane (microfiber) insole and back-quarter panels prevent "sliding" in the shoe and wicks away moisture.

An **embossed leather outsole** marked with a decorative design, including the size, width, and shank strength, provides traction.

Alfa is available with pre-stitched, high-quality **satin or cotton ribbons** free of charge.

Alfa's sizing follows the **UK sizing system**.

Elastic drawstring encased in a cotton binding



Greek-Square

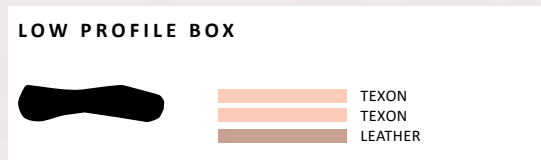
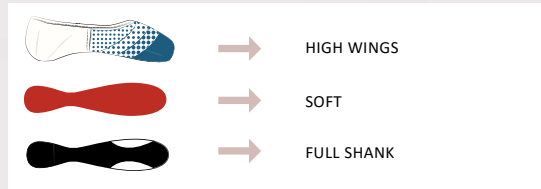
Roman

ALFA SOFT

Alfa Soft shank provides light support to the arch and is ideal for dancers with tight ligaments or an underdeveloped arch. In most cases, a "beginner" who is starting pointe work will be best served with a soft shank. The minimal support provided by a soft shank will allow the dancer to stretch their ligaments to enable the dancer to stand fully "on top" of their platform. In other cases, a "seasoned" dancer with very tight ligaments may continue to wear a soft shank.



SIZE	WIDTH	FREE RIBBONS
3 to 8	medium X wide XX extra wide XXX x extra wide XXXX	satin or cotton



BINDIN : ELASTIC DRAWSTRING

ALFA POINTE MORE OPTIONS

The Salmon, Walnut and Carmel colors will match your skin tone.
The White and Black colors will be more adapted to the needs of your dance performances.



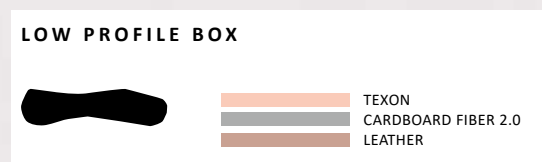
ALFA MEDIUM

Alfa Medium shank provides ample support to the arch for most dancers. For dancers with pliable ligaments, a medium shank allows them to stand "on top" of their platform with great ease.



SAUMON

SIZE	WIDTH	FREE RIBBONS
3 to 8	medium wide extra wide x extra wide	X XX XXX XXXX
		satin or cotton



BINDING: ELASTIC DRAWSTRING



If your size does not match our core sizing, you have more size options to order.

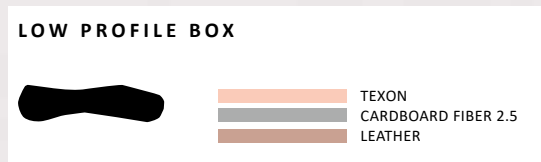
	MORE OPTIONS				STOCK ITEMS										
SIZE UK	1	1.5	2	2.5	3	3.5	4	4.5	5	5.5	6	6.5	7	7.5	8
SIZE EUR	33	33.5	34	35	35.5	36	36.5	37	38	39	39.5	40	41	41.5	42
SIZE JAPAN	20.4	20.8	21.1	21.8	22.1	22.4	22.8	23.1	24.2	24.9	25.5	25.8	26.4	26.8	27.2
SIZE US	3.5	4	4.5	5	5.5	6	6.5	7	7.5	8	8.5	9	9.5	10	10.5

ALFA HARD

Alfa Hard shank supports a malleable arch with stretched ligaments. For the best support for this type of arch, a hard shank will provide the most significant support. In addition, the shank must conform to the foot's arch. The three-quarter cut shank provides the utmost contact to the arch for maximum support while "en pointe."



SIZE	WIDTH	FREE RIBBONS
1 to 8	medium X wide XX extra wide XXX x extra wide XXXX	satin or cotton



BINDING: ELASTIC DRAWSTRING

ALFA POINTE MORE OPTIONS

The Salmon, Walnut and Carmel colors will match your skin tone. The White and Black colors will be more adapted to the needs of your dance performances.



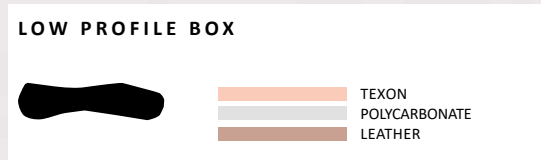
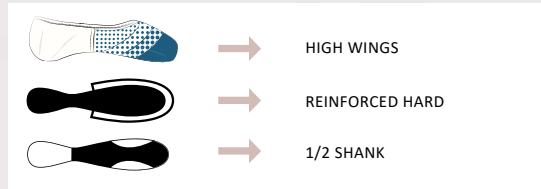
ALFA

REINFORCED HARD

Alfa Reinforced Hard shank supports a highly flexible foot with stretched ligaments—either through the development of the arch or born with loose ligaments. A reinforced hard shank will provide the ultimate support to the arch. A half shank is best suited for this type of arch to ensure that the shank will conform entirely to the arch.



SIZE	WIDTH	FREE RIBBONS
3 to 8	medium X wide XX extra wide XXX x extra wide XXXX	satin or cotton



BINDING: ELASTIC DRAWSTRING

If your size does not match our core sizing, you have more size options to order.

	MORE OPTIONS				STOCK ITEMS										
SIZE UK	1	1.5	2	2.5	3	3.5	4	4.5	5	5.5	6	6.5	7	7.5	8
SIZE EUR	33	33.5	34	35	35.5	36	36.5	37	38	39	39.5	40	41	41.5	42
SIZE JAPAN	20.4	20.8	21.1	21.8	22.1	22.4	22.8	23.1	24.2	24.9	25.5	25.8	26.4	26.8	27.2
SIZE US	3.5	4	4.5	5	5.5	6	6.5	7	7.5	8	8.5	9	9.5	10	10.5



Like Alfa, the Omega pointe shoe is ideal for the **moderate-shaped Greek or Roman foot**, where the second toe predominates or two toes of equal length, as both pointe shoes share the same last. Omega, manufactured in the **turn construction** method (made inside out) with external pleats, is English shoemaking traditionalism at its best. Noted for its clean appearance when placed on the foot, Omega's **elasticized binding** enhances the dancers' leg line to become a natural foot extension.

Additionally, a **moderate crown height** adds to Omega's eloquent line. A **reduction of the side and heel measurement** and an open **U shape throat** display the dancers' arch to its maximum potential. Its **reinforced platform ensures extended wear**, while a silicone gel tip pad applied to the inside of the shoe's platform offers additional comfort. Lateral support at the metatarsals is due to Omega's **supportive wings**. A polyurethane (microfiber) insole and back-quarter panels prevent "sliding" in the shoe and wicks away moisture.

An **embossed leather outsole** marked with a decorative design, including the size, width, and shank strength, provides traction.

Omega is available with pre-stitched, high-quality **satin or cotton ribbons** free of charge.

Omega's sizing follows the **UK sizing system**.

Elasticized binding without drawstring



Greek-Square

Roman

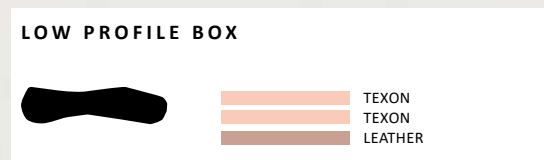
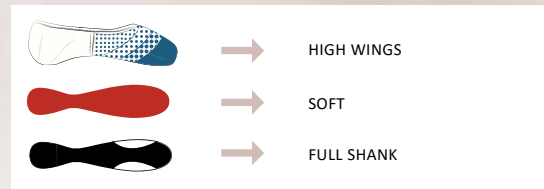
OMEGA SOFT

Omega Soft shank provides light support to the arch and is ideal for dancers with tight ligaments or an underdeveloped arch. In most cases, a "beginner" who is starting pointe work will be best served with a soft shank. The minimal support provided by a soft shank will allow the dancer to stretch their ligaments to enable the dancer to stand fully "on top" of their platform. In other cases, a "seasoned" dancer with very tight ligaments may continue to wear a soft shank.



SAUMON

SIZE	WIDTH	FREE RIBBONS
3 to 8	medium X wide XX extra wide XXX x extra wide XXXX	satin or cotton



BINDING: ELASTIC BINDING

OMEGA POINTE MORE OPTIONS

The Salmon, Walnut and Carmel colors will match your skin tone. The White and Black colors will be more adapted to the needs of your dance performances.



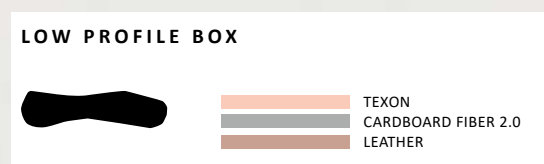
OMEGA

MEDIUM 3/4

Omega Medium 3/4 shank provides ample support to the arch for most dancers. For dancers with pliable ligaments, a medium shank allows them to stand "on top" of their platform with great ease. A three-quarter cut shank provides the utmost contact to the arch for maximum support while "en pointe".



SIZE	WIDTH	FREE RIBBONS
3 to 8	medium wide extra wide x extra wide	X XX XXX XXXX
		satin or cotton



BINDING: ELASTIC BINDING

If your size does not match our core sizing, you have more size options to order.

	MORE OPTIONS				STOCK ITEMS										
SIZE UK	1	1.5	2	2.5	3	3.5	4	4.5	5	5.5	6	6.5	7	7.5	8
SIZE EUR	33	33.5	34	35	35.5	36	36.5	37	38	39	39.5	40	41	41.5	42
SIZE JAPAN	20.4	20.8	21.1	21.8	22.1	22.4	22.8	23.1	24.2	24.9	25.5	25.8	26.4	26.8	27.2
SIZE US	3.5	4	4.5	5	5.5	6	6.5	7	7.5	8	8.5	9	9.5	10	10.5

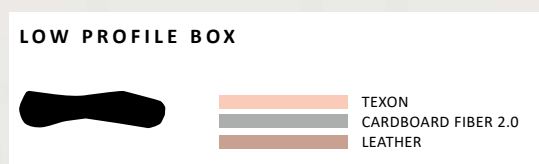
OMEGA MEDIUM

Omega Medium shank provides ample support to the arch for most dancers. For dancers with pliable ligaments, a medium shank allows them to stand "on top" of their platform with great ease.



SAUMON

SIZE	WIDTH	FREE RIBBONS
3 to 8	medium X wide XX extra wide XXX x extra wide XXXX	satin or cotton



BINDING: ELASTIC BINDING

OMEGA POINTE MORE OPTIONS

The Salmon, Walnut and Carmel colors will match your skin tone. The White and Black colors will be more adapted to the needs of your dance performances.



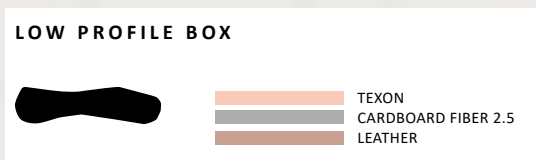
OMEGA HARD

Omega Hard shank supports a malleable arch with stretched ligaments. For the best support for this type of arch, a hard shank will provide the most significant support. In addition, the shank must conform to the foot's arch. The three-quarter cut shank provides the utmost contact to the arch for maximum support while "en pointe".



SAUMON

SIZE	WIDTH	FREE RIBBONS
3 to 8	medium wide X extra wide XX x extra wide XXX XXXX	satin or cotton



BINDING: ELASTIC BINDING

If your size does not match our core sizing, you have more size options to order.

	MORE OPTIONS				STOCK ITEMS										
SIZE UK	1	1.5	2	2.5	3	3.5	4	4.5	5	5.5	6	6.5	7	7.5	8
SIZE EUR	33	33.5	34	35	35.5	36	36.5	37	38	39	39.5	40	41	41.5	42
SIZE JAPAN	20.4	20.8	21.1	21.8	22.1	22.4	22.8	23.1	24.2	24.9	25.5	25.8	26.4	26.8	27.2
SIZE US	3.5	4	4.5	5	5.5	6	6.5	7	7.5	8	8.5	9	9.5	10	10.5

OMEGA

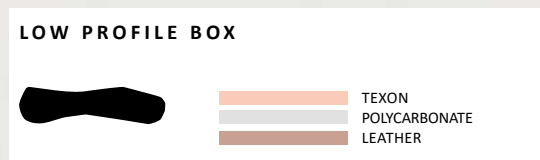
REINFORCED HARD

Omega Reinforced Hard shank supports a highly flexible foot with stretched ligaments—either through the development of the arch or born with loose ligaments. A reinforced hard shank will provide the ultimate support to the arch. A half shank is best suited for this type of arch to ensure that the shank will conform entirely to the arch.



SAUMON

SIZE	WIDTH	FREE RIBBONS
3 to 8	medium wide extra wide x extra wide	X XX XXX XXXX
		satin or cotton



OMEGA POINTE MORE OPTIONS

The Salmon, Walnut and Carmel colors will match your skin tone. The White and Black colors will be more adapted to the needs of your dance performances.

BINDING: ELASTIC BINDING



If your size does not match our core sizing, you have more size options to order.

	MORE OPTIONS				STOCK ITEMS										
SIZE UK	1	1.5	2	2.5	3	3.5	4	4.5	5	5.5	6	6.5	7	7.5	8
SIZE EUR	33	33.5	34	35	35.5	36	36.5	37	38	39	39.5	40	41	41.5	42
SIZE JAPAN	20.4	20.8	21.1	21.8	22.1	22.4	22.8	23.1	24.2	24.9	25.5	25.8	26.4	26.8	27.2
SIZE US	3.5	4	4.5	5	5.5	6	6.5	7	7.5	8	8.5	9	9.5	10	10.5





La Pointe

By Wear Moi



La Pointe

LA POINTE SQUARE

Wear Moi

The **Roman and Greek Square foot** is an ideal foot shape for pointe work, as the first three toes are of equal length and have the most contact with the internal platform of the pointe shoe. Additionally, the external platform of the La Pointe Square offers the broadest platform of all Wear Moi pointe shoes. A broad platform provides the **greatest feeling of security** while "en pointe".

The cut of a **U shape throat** mimics the lines of the square box and is often the choice of dancers worldwide. It contains a cotton drawstring encased in a cotton binding.

The construction of La Pointe Square is in the **turned method** and offers pleats on the bottom front of the shoe and contains a standard crown height with traditional side and heel measurements. A reinforced platform **extends the longevity of this pointe shoe.**

An **embossed leather outsole** marked with a decorative design, including the size, width, and shank strength, provides traction.

La Pointe Square is available with pre-stitched, high-quality **satin or cotton ribbons** free of charge.

La Pointe's Square sizing follows the **UK sizing system.**



Greek-Square



Roman

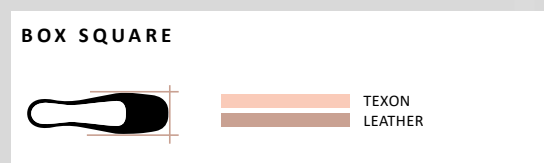
LA POINTE SQUARE EXTRA SOFT

The La Pointe Square Extra Soft shank provides minimal support to the arch and is ideal for dancers transitioning from a demi-pointe shoe to their first pair of pointe shoes. Additionally, this shank is suited for dancers with tight ligaments or an underdeveloped arch.



 SAUMON

SIZE	WIDTH	FREE RIBBONS
3 to 7	medium X wide XX extra wide XXX x extra wide XXXX	satin or cotton



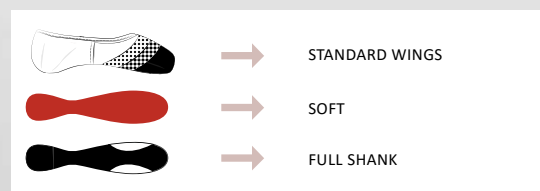
LA POINTE SQUARE SOFT

The La Pointe Square Soft shank provides light support to the arch and is ideal for dancers with tight ligaments or an underdeveloped arch. In most cases, a "beginner" who is starting pointe work will be best served with a soft shank. The minimal support provided by a soft shank will allow the dancer to stretch their ligaments to enable the dancer to stand fully "on top" of their platform. In other cases, a "seasoned" dancer with very tight ligaments may continue to wear a soft shank.



 SAUMON

SIZE	WIDTH	FREE RIBBONS
3 to 7	medium X wide XX extra wide XXX x extra wide XXXX	satin or cotton



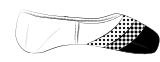


LA POINTE SQUARE MEDIUM

The La Pointe Square Medium shank provides ample support to the arch for most dancers. For dancers with pliable ligaments, a medium shank allows them to stand "on top" of their platform with great ease.





SAUMON

SIZE	WIDTH	FREE RIBBONS
3 to 7	medium X wide XX extra wide XXX x extra wide XXXX	satin or cotton

	→	STANDARD WINGS
	→	MEDIUM
	→	FULL SHANK

BOX SQUARE

	 TEXON CARDBOARD FIBER 2.0 LEATHER
---	---

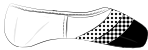
LA POINTE SQUARE HARD

The La Pointe Square Hard shank supports a malleable arch with stretched ligaments. For the best support for this type of arch, a hard shank will provide the most significant support. In addition, the shank must conform to the foot's arch. The three-quarter cut shank provides the utmost contact to the arch for maximum support while "en pointe".



 SAUMON

SIZE	WIDTH	FREE RIBBONS
3 to 7	medium X wide XX extra wide XXX x extra wide XXXX	satin or cotton

	→	STANDARD WINGS
	→	HARD
	→	3/4 SHANK

BOX SQUARE	
	 TEXON CARDBOARD FIBER 2.5 LEATHER

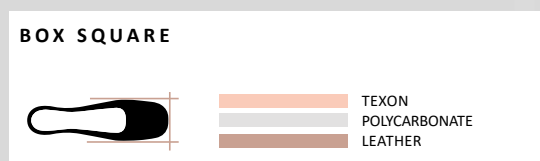
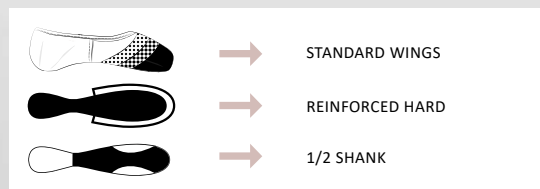
LA POINTE SQUARE REINFORCED HARD

The La Pointe Square Reinforced Hard shank supports a highly flexible foot with stretched ligaments- either through the development of the arch or born with loose ligaments. A reinforced hard shank will provide the ultimate support to the arch. A half shank is best suited for this type of arch to ensure that the shank will conform entirely to the arch.



 SAUMON

SIZE	WIDTH	FREE RIBBONS
3 to 7	medium X wide XX extra wide XXX x extra wide XXXX	satin or cotton



MORE OPTIONS

If your ideal combination is not displayed in stock on the previous pages, we have other options on demand. Here's all the pre-defined combinations that you can choose from for the La Pointe Square and the La Pointe Taper models.

01 COLOR

The Salmon, Walnut and Carmel colors will match your skin tone. The White and Black colors will be more adapted to the needs of your dance performances.



02

SIZE

If your size does not match our core sizing, you have more size options to order, ranging from 13 to 9.

	MORE OPTIONS					STOCK ITEMS										MORE OPTIONS			
SIZE UK	13	1	1.5	2	2.5	3	3.5	4	4.5	5	5.5	6	6.5	7	7.5	8	8.5	9	
SIZE EUR	32	33	33.5	34	35	35.5	36	36.5	37	38	39	39.5	40	41	41.5	42	42.5	43	
SIZE JAPAN	19.8	20.4	20.8	21.1	21.8	22.1	22.4	22.8	23.1	24.2	24.9	25.5	25.8	26.4	26.8	27.2	27.5	27.8	
SIZE US	1	3.5	4	4.5	5	5.5	6	6.5	7	7.5	8	8.5	9	9.5	10	10.5	11	11.5	

03

VAMPS



Our La Pointe models have a traditional U-cut vamp. If you prefer to opt for a different line where your foot will be less exposed, you can choose the V-cut option on demand.

04

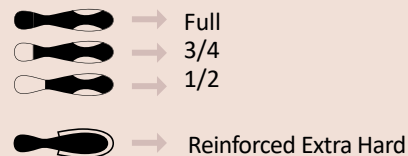
WIDTH

narrow (N)
medium (X)
wide (XX)
extra wide (XXX)
x extra wide (XXXX)
xx extra wide (XXXXX)

We offer two additional widths on demand: narrow (N) and xx extra wide (XXXXX)

05

LENGTH & SHANK



Shank and length can be adapted according to your needs.

Extra Soft shank only available in full length

RH and RXH shanks only available in 1/2 length

La Pointe

LA POINTE TAPER

Wear Me!

The La Pointe Taper is ideally suited for the **Egyptian or Greek-Taper foot**, where the first toe (big toe) predominates, and all other phalanges reduce in length, with the fifth toe (little toe) being the shortest. The last of La Pointe Taper provides a tapered fit on the inside of the shoe for **maximum support**.

The **U throat shape** contain a cotton drawstring encased in a cotton binding.

The construction of La Pointe Taper is in the **turned method** and offers pleats on the bottom front of the shoe and contains a standard crown height with traditional side and heel measurements. The platform's durability is extended by a **reinforcement lining** placed within the box during construction.

An **embossed leather outsole** marked with a decorative design, including the size, width, and shank strength, provides traction.

La Pointe Taper is available with pre-stitched, high-quality **satin or cotton ribbons** free of charge.

La Pointe's Taper sizing follows the **UK sizing system**.



Greek-Taper



Egyptian

LA POINTE TAPER EXTRA SOFT

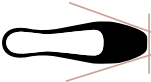


The La Pointe Taper Extra Soft shank provides minimal support to the arch and is ideal for dancers transitioning from a demi-pointe shoe to their first pair of pointe shoes. Additionally, this shank is suited for dancers with tight ligaments or an underdeveloped arch.




SAUMON

SIZE	WIDTH	FREE RIBBONS
3 to 7	medium X wide XX extra wide XXX x extra wide XXXX	satin or cotton

	→	STANDARD WINGS
	→	EXTRA SOFT
	→	FULL SHANK

BOX TAPER	
	 TEXON  LEATHER

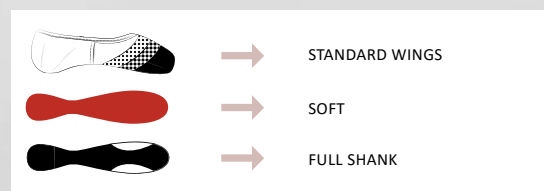
LA POINTE TAPER SOFT

The La Pointe Taper Soft shank provides light support to the arch and is ideal for dancers with tight ligaments or an underdeveloped arch. In most cases, a "beginner" who is starting pointe work will be best served with a soft shank. The minimal support provided by a soft shank will allow the dancer to stretch their ligaments to enable the dancer to stand fully "on top" of their platform. In other cases, a "seasoned" dancer with very tight ligaments may continue to wear a soft shank.



 SAUMON

SIZE	WIDTH	FREE RIBBONS
3 to 7	medium X wide XX extra wide XXX x extra wide XXXX	satin or cotton



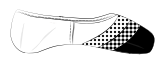


LA POINTE TAPER MEDIUM

The La Pointe Taper Medium shank provides ample support to the arch for most dancers. For dancers with pliable ligaments, a medium shank allows them to stand "on top" of their platform with great ease.




SAUMON

SIZE	WIDTH	FREE RIBBONS
3 to 7	medium X wide XX extra wide XXX x extra wide XXXX	satin or cotton

	→	STANDARD WINGS
	→	MEDIUM
	→	FULL SHANK

BOX TAPER	
	 TEXON CARDBOARD FIBER 2.0 LEATHER

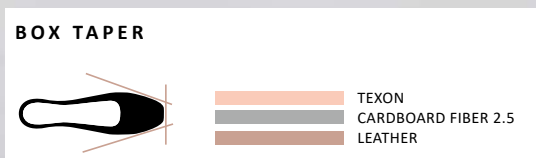
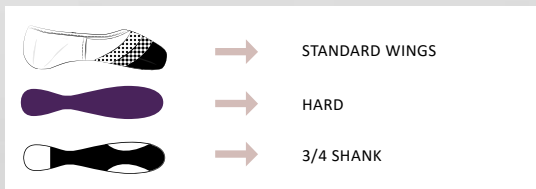
LA POINTE TAPER HARD

The La Pointe Taper Hard shank supports a malleable arch with stretched ligaments. For the best support for this type of arch, a hard shank will provide the most significant support. In addition, the shank must conform to the foot's arch. The three-quarter cut shank provides the utmost contact to the arch for maximum support while "en pointe".



SAUMON

SIZE	WIDTH	FREE RIBBONS
3 to 7	medium X wide XX extra wide XXX x extra wide XXXX	satin or cotton



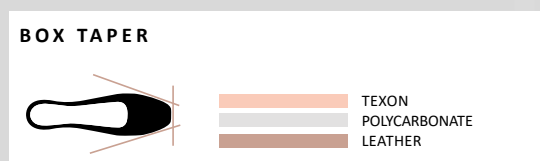
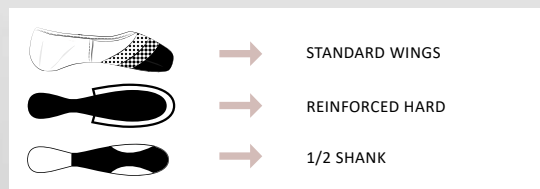
LA POINTE TAPER REINFORCED HARD

The La Pointe Taper Reinforced Hard shank supports a highly flexible foot with stretched ligaments- either through the development of the arch or born with loose ligaments. A reinforced hard shank will provide the ultimate support to the arch. A half shank is best suited for this type of arch to ensure that the shank will conform entirely to the arch.



SAUMON

SIZE	WIDTH	FREE RIBBONS
3 to 7	medium X wide XX extra wide XXX x extra wide XXXX	satin or cotton



MORE OPTIONS

If your ideal combination is not displayed in stock on the previous pages, we have other options on demand. Here's all the pre-defined combinations that you can choose from for the La Pointe Square and the La Pointe Taper models.

01 COLOR

The Salmon, Walnut and Carmel colors will match your skin tone. The White and Black colors will be more adapted to the needs of your dance performances.



02

SIZE

If your size does not match our core sizing, you have more size options to order, ranging from 13 to 9.

	MORE OPTIONS					STOCK ITEMS										MORE OPTIONS			
SIZE UK	13	1	1.5	2	2.5	3	3.5	4	4.5	5	5.5	6	6.5	7	7.5	8	8.5	9	
SIZE EUR	32	33	33.5	34	35	35.5	36	36.5	37	38	39	39.5	40	41	41.5	42	42.5	43	
SIZE JAPAN	19.8	20.4	20.8	21.1	21.8	22.1	22.4	22.8	23.1	24.2	24.9	25.5	25.8	26.4	26.8	27.2	27.5	27.8	
SIZE US	1	3.5	4	4.5	5	5.5	6	6.5	7	7.5	8	8.5	9	9.5	10	10.5	11	11.5	

03

VAMPS



Our La Pointe models have a traditional U-cut vamp. If you prefer to opt for a different line where your foot will be less exposed, you can choose the V-cut option on demand.

04

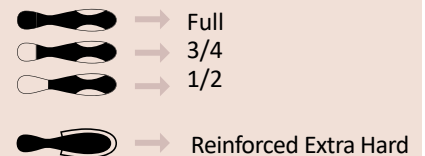
WIDTH

narrow (N)
medium (X)
wide (XX)
extra wide (XXX)
x extra wide (XXXX)

We offer an additional width on demand: narrow (N).

05

LENGTH & SHANK



Shank and length can be adapted according to your needs.

Extra Soft shank only available in full length.

RH and RXH shanks only available in 1/2 length.

MAKING YOUR OWN CUSTOM-TAILORED SHOES

Wear Moi addresses dancers' individual needs through its Made to Measure department. Be it structural needs of the foot or esthetic preferences visually, "Custom-tailored" pointe shoes can make all the difference.

Many dancers from pre-professional to ballerinas of renowned ballet companies, already benefit from this service.



The most requested alterations to the upper include **higher or lower vamp, side, and or heel measurements. Bindings** can be produced with an elasticized casing, or a cotton drawstring encased in a cotton binding- the **drawstring may be placed on inside** if requested.

For dancers with a narrower heel in proportion to the ball of the foot, a **pin heel** may be beneficial. Shanks may be modified at the back of the shank. Lateral support at the ball of the foot may be adjusted with **lower, higher, firmer, or lighter wings.**

La Pointe

by Wear Moi

Made to Order

Date : *1 / 1 / 20*

Fitter's name : _____

Name : _____

Address : _____

Phone : _____

E-Mail : _____

SIZE	
STREET SHOES SIZE	
METatarsal CIRCUMFERENCE*	
WIDTH	N X XX XXX XXXX XXXXX
SHANK STRENGTH	XS S M H RH RXH
SHANK LENGTH	F 3/4 1/2
DRAWSTRING	ELASTIC COTTON
VAMP*	
CUT	U V
HEEL*	
SIDE*	
WINGS	STANDARD HIGH
BOX	TAPER SQUARE
PLATFORM*	

* Measurement in millimeter

Comments : _____

WIDTH

- N → Narrow
- X → Medium
- XX → Wide
- XXX → Extra Wide
- XXXX → X Extra Wide
- XXXXX → XX Extra Wide***

SHANK STRENGTH

- XS → Extra Soft*
- S → Soft
- M → Medium
- H → Hard
- RH → Reinforced Hard**
- RXH → Reinforced Extra Hard**

SHANK LENGTH

- Full
- 3/4
- 1/2

HEEL

- SQUARE
- TAPER



DIV 56



Pre-cut pointe shoe / ballet shoe cotton ribbon.

Length: 2 m / 2.20 yards per unit

Width: 2.2 cm / 7/8" wide

DIV 57



Pre-cut pointe shoe / ballet shoe satin ribbon.

Length: 2 m / 2.20 yards per unit

Width: 2.3 cm / 7/8" wide

DIV 61



Satin ribbon with stretch insert. Takes the stress off your heel tendon. 4 units per set.

Length: 57 cm / 22" per unit

Width: 2.3 cm / 7/8" wide

DIV 15



Cotton ribbon, perfect for canvas ballet shoes, great for the matte look.

Length: 50 m / 55 yards per roll

Width: 2.2 cm / 7/8" wide

DIV 31



Satin ribbon in roll.

Length: 80 m / 87 yards per roll

Width: 2.3 cm / 7/8" wide

DIV 55



Pointe Shoe elastic in roll.

Length: 20 m / 22 yards per roll

Width: 1.9 cm / 3/4" wide

Wear Moi

Designed in France

SHOE ACCESSORIES

DIV 58



Pre-cut pointe shoe elastic.

Length: 50 cm / 20" per unit

Width: 1.9 cm / 3/4" wide

DIV 59



Pre-cut pointe shoe invisible elastic.

Length: 50 cm / 20" per unit

Width: 2.5 cm / 1" wide

DIV 52



Thin and flexible silicone toe pads. Form perfectly to the foot allowing a dancer to truly feel the floor for proper technique while worn.

DIV 54



Wear Moi invisible elastic in roll.

Length: 25 m / 27 yards per roll

Width: 2.5 cm / 1" wide

DIV 13



Rock rosin, a real dancers helper.

Weight: 400g / 0.88 Pound

LYCRA®



CLASSIQUE FOOTED TIGHTS – DIV 01

Footed matte semi-opaque ballet tights with a soft Lycra waistband and color-matched gusset (black excludes gusset). Super stretchy for excellent fit and performance, maintaining shape and color. Ideal for class, rehearsal, and performance. Featuring premium elastane and polyamide fibers wrapped in a special braiding technique for enhanced durability and resilience.

Microfiber - Fiber thickness: 50 denier

Children: 4/8 - 8/12 - 12/14
Ladies : S/M - L/XL





Wear **Mei**
Designed in France
TIGHTS



CLASSIQUE CONVERTIBLE TIGHTS – DIV 03

Convertible matte semi-opaque ballet tights, with a soft, comfortable Lycra waistband and color-matched gusset. Super stretchy, the unique weave of elastane and wrapped polyamide yarn offers exceptional durability, ensuring the tights maintain their shape through washes without shrinkage or fading. Perfect for class, rehearsal, and performance.

Microfiber - Fiber thickness: 50 denier

Children: 4/8 - 8/12 - 12/14
Ladies : S/M - L/XL





CLASSIQUE FOOTLEESS TIGHTS – DIV 60

Footless matte semi-opaque ballet tights with a soft Lycra waistband and color-matched panel (gusset excluded in black). Super stretchy for an excellent fit and performance, maintaining both shape and color. Featuring high-quality elastane and polyamide wrapped threads, with a braiding method that enhances durability and resilience. Perfect for class, rehearsal, and performance.

Microfiber - Fiber thickness: 55 denier

Children: 4/8 - 8/12 - 12/14

Ladies: S/M - L/XL



LIGHT
PINK



BLACK



PREMIERE FOOTED TIGHTS - DIV 124



Children: 4/8 - 8/12 - 12/14
Ladies: S/M - L/XL

Premiere footed tights with a supportive, thicker microfiber waistband for added comfort. Super stretchy and semi-opaque for an exceptional fit that holds its shape. Featuring a refined, lightly textured matte finish, it's the perfect option for class and performance.

Microfiber - Fiber thickness: 50 denier



PREMIERE CONVERTIBLE TIGHTS - DIV 123



Children: 12/14
Ladies: S/M - L/XL

Dance to your heart's content in our Premiere Dance in our Premiere convertible tights with a soft microfiber waistband. Super-stretchy and semi-opaque, they transition easily from footed to footless. Ideal for class, rehearsal, and performance.

Microfiber - Fiber thickness: 50 denier



LIGHT
PINK

DARK
PINK

WALNUT



Collection PREMIÈRE Tights

DIV 79

Zippered bag made from breathable mesh that is perfect for your ballet shoes.

Honeycomb Fabric- Canvas

Length: 25 cm

Width: 13 cm



BLACK

BLACK
SALMON

DIV 80

Small accessory bag featuring breathable mesh and a zippered top for security.

Honeycomb Fabric- Canvas

Length: 12 cm

Width: 18 cm



BLACK

BLACK
SALMON

DIV 81

Classic breathable mesh bag with drawstrings, perfect for keeping your pointe shoes pristine.

Honeycomb Fabric- Canvas

Length: 33 cm

Width: 12 cm



BLACK

BLACK
SALMON

DIV 82

Exclusive pointe shoe bag holds up to four pairs with breathable compartments. Features long shoulder straps for comfort.

Honeycomb Fabric- Canvas

Length: 22 cm

Width: 16 cm



BLACK

BLACK
SALMON



DIV 92

A large size quilted tote bag, honeycomb textured, with inside compartment. Satin lining and drawstring cinch closure.

Quilted Perforated Fabric

Length: 32 cm

Width: 36 cm



BLACK

DIV 93

A small size quilted tote bag, honeycomb textured, with inside compartment. Satin lining and drawstring cinch closure.

Quilted Perforated Fabric

Length: 23 cm

Width: 27 cm



BLACK

DIV 94

Quilted honeycomb accessory pouch with satin lining and zippered top, perfect for storing hair accessories.

Quilted Perforated Fabric

Length: 13 cm

Width: 12 cm



BLACK



Wear Mei
Designed in France
ACCESSORIES



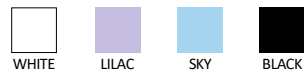
DIV 42

One Size - Microfiber scrunchies match all Wear Moi colors perfectly.
Microfiber.



DIV 97

Bun cover with faux rhinestones. High quality materials and secure elastic.
Polythylene - Acrylic stone



DIV 108

One Size - Stretch Lace scrunchies



DIV 63

Tutu keychain
with rhinestones.
Leather - Tulle



BLACK
PACIFIC



BLACK
PEACH



BLACK
LILAC



DIV 62

Tutu keychain
with rhinestones.
Satin - Tulle



BLACK
SALMON

DIV 88

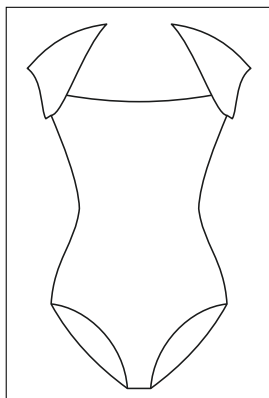
Tutu keychain
with rhinestones.
Leather - Tulle



SALMON
WHITE



HOW DO YOU PERSONALIZE YOUR ONE-OF-A-KIND ITEM?



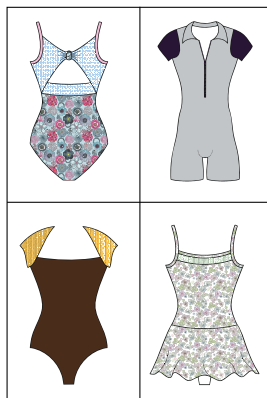
1• CHOOSE YOUR STYLE

Browse our wide range of products for women and men, and select the style you want to customize.



2• PERSONALIZE YOUR GARMENT

Design a unique item by applying different materials, colors and prints.



3• ORDER YOUR DESIGN

Add your creation to your cart. You will receive your original design within three to four weeks.



4• DANCE AND SHARE

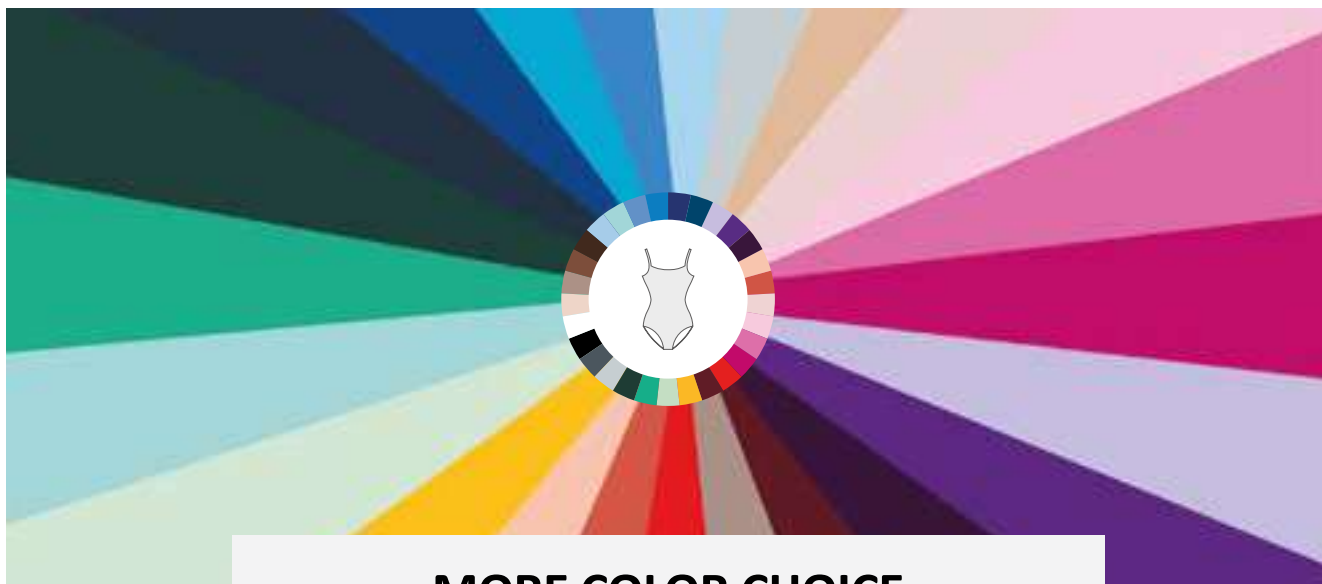
Share a photo of your Custom By Moi outfit by sending an email to wearmoi@wearmoi.com!



Unleash your creativity and design your own Wear Moi clothing line with Custom by Moi!

- An extensive styles selection for women & men: from classic to innovative designs
- Thousands of possible combinations: turn your creative vision into reality
- Custom by Moi items can only be returned if defective within 30 days of receipt





MORE COLOR CHOICE












Boost your dance attire selection with our More Color Choice program! Wear Moi invites you to choose from a wide range of current designs for children, women, and men in a spectrum of colors beyond those in our catalog. To place an order, please contact our customer service team.

Learn more about the program!

- Order quantity: multiples of 3 units per size and color
- Only apply to options not already available in our catalog
- Delivery: 3 to 4 weeks
- Wide selection of men's and women's styles



Choose Color & Choose style - Microfiber

WHITE		ABBIE ARABESQUE ANGELIQUE CABRIOLE CANDIDE CONCERTO CYPRES*	DOLORES* EMERAUDE FAUSTINE GALATE HARLOW* LAVANDE* LOVINA	MARIE MAUVE PAGE PIROUETTE RUBY THALIA		ARDESIA* AZUREA* BAGATELLE* BALKALA* BALLERINE* GALLI* VOLANTE*		ALEGRO* APOLO* DELIA* DOLLY* DAPHNE* MAGDA* MELINA*			
BALLET PINK											
PEACH											
PINK											
BEIGE											
LILAC											
LIGHT GREY											
MINT											
SKY											
PACIFIC											
MOKA			ANA IKITA			ARIELLE GIPSY MACARON			IRIS		DIV42
FRENCH BLUE											
ROSE											
CORAL											
RED											
FUSHIA											
MIMOSA											
AZUR BLUE											
EMERALD											
WALNUT											
PURPLE											
ROYAL BLUE											
DARK GREY											
BURGUNDY											
FOREST GREEN											
PRUNE											
NAVY											
BLACK		ALPIN CONRAD HAXO MERCURY		MARCEAU ODEON		ATLAS CAPRI TANGO		CENTAUR HORACIO IGOR JASON LUPIN OBERON** VERSAO			

(*) Not available in walnut
 (**) Not available in moka, pacific, forest green, french blue and ballet pink

Choose Color & Choose style - Cotton

WHITE		ETUDE GLISSADE OPERA PRELUDE REVERENCE		ADAGE* ENTRECHAT*
BALLET PINK				
LILAC				
SKY				
WALNUT				
GREY				
NAVY				
BLACK				

(*) Not available in walnut









YOUR LOGO YOUR WAY

Wear Moi allow you to help dance schools to customize their uniforms by incorporating their logos onto a curated selection of iconic Wear Moi products, available in a diverse range of styles, sizes, and colors for children, women, and men.

- Order minimum: multiples of 3 units per size and color
- No setup fee
- School logo will replace the Wear Moi logo
- One silkscreen color print

Women and girls styles

	ABBIE	DOLORES	MARIE		ARDESIA		ANA		OPUS
	ANGELIQUE	EMERAUDE	MAUVE		BAGATELLE		IKITA		PENELOPE
	ARABESQUE	FAUSTINE	PAGE		BALKALA				
	CABRIOLE	GALATE	PIROUETTE		BALLERINE				
	CANDIDE	HARLOW	RUBY		GALLI		ARIELLE		ILIADE
	CYPRES	LAVANDE	THALIA		NOISETTE		GIPSY		MACARON
	CONCERTO	LOVINA			VOLANTE				

Men and boys styles

	ALPIN		CENTAUR		ODEON		BELEM		MALONE
	CONRAD		HORACIO		MARCEAU				
	HAXO		IGOR						
	MERCURY		JASON						
			LUPIN						
			OBERON						
			VERSAO						

SIZE	PRODUCT TYPE	MAXIMUM DIMENSION
SMALL LOGO	LEOTARDS, DRESSES, T-SHIRTS	1 inch / 25 mm
MEDIUM LOGO (Front)	JACKETS	2 inch / 55 mm
	PANTS	2 inch / 55 mm
LARGE LOGO (Back)	JACKETS (Child)	4 inch x 7 inch / 100 mm x 180 mm
	JACKETS (Adult)	5 inch x 10 inch / 130 mm x 260 mm

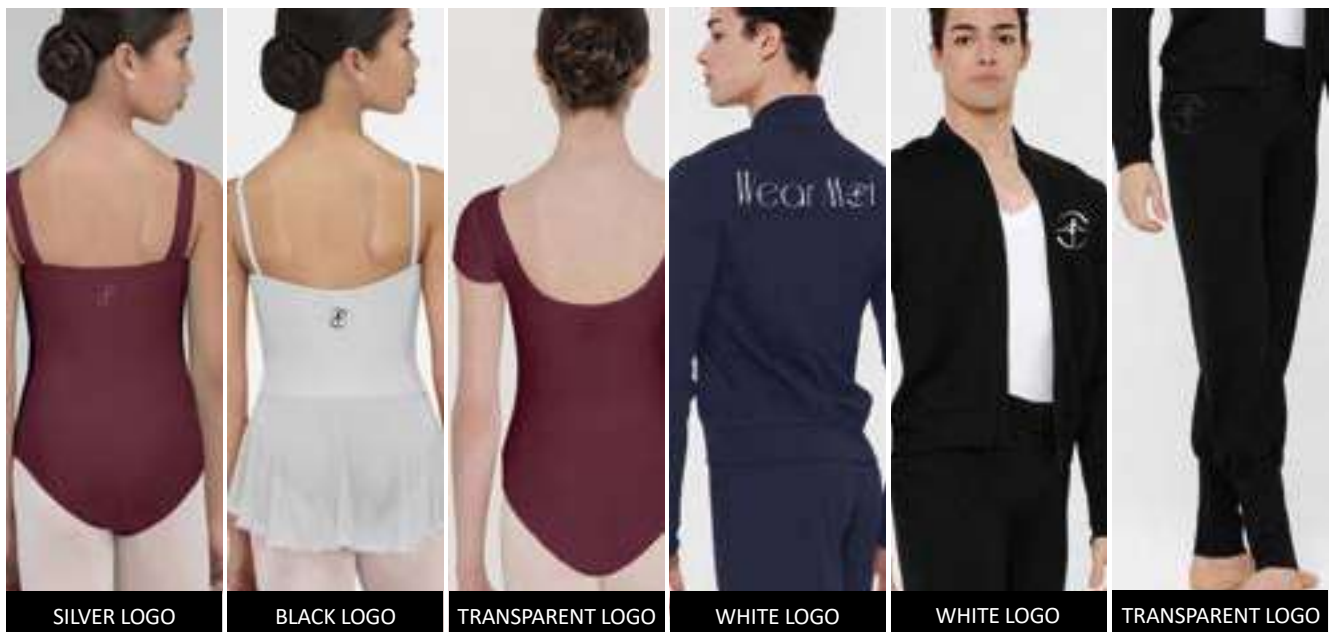
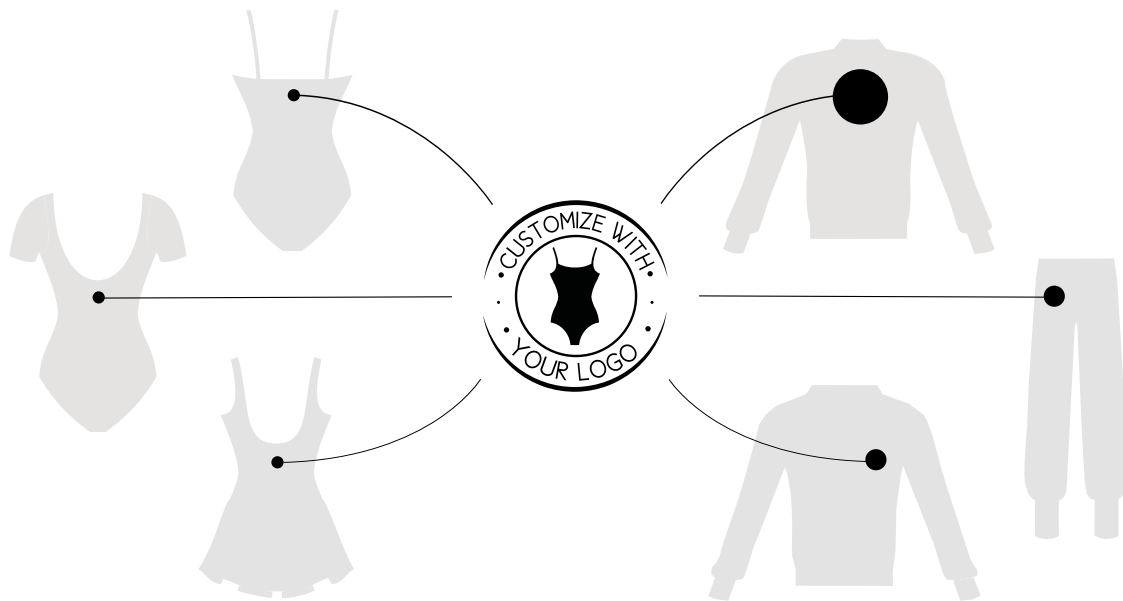
How to place a Your Logo Your Way order?

1 - Choose your product : Select the eligible style(s) you wish to customize.

2 - Send us your request : Include the following information:

- Studio/School name
- Product: Style name, size and color
- Logo file: High-resolution .ai or .pdf format is required. High-res PNG with transparent background is also acceptable. No edits will be made to the logo on our end.
- Print color: Single-color only (White, Black, Golden, Silver or Transparent preferred). For other colors, please provide a Pantone reference.

3 - Review & approve the mockup : Our team will send you a PDF summary with a visual simulation of your logo placement. Please review and approve before printing.



INDEX

ABBIE	p 7
ADAGE	p 32
ADELA	p 25
AELIS	p 24
ALBAN	p 103
ALCYONE	p 105
ALEGRO	p 20
ALFA	p 138
ALFA HARD	p 142
ALFA MEDIUM	p 141
ALFA REINFORCED HARD	p 143
ALFA SOFT	p 140
ALIAS	p 25
ALOES	p 85
ALPIN	p 108
ALTAN	p 110
ALYSON	p 64
ANA	p 90
ANDESITE	p 24
ANGELIQUE	p 16
APOLO	p 21
ARABESQUE	p 28
ARDESIA	p 19
ARIAL	p 132
ARIAL EXTRA SOFT	p 134
ARIAL HARD	p 137
ARIAL MEDIUM	p 136
ARIAL SOFT	p 135
ARIELLE	p 22
ARLETTY	p 49
ASTRA	p 126
ATLAS	p 106
ATTITUDE	p 89
AZTEC	p 25
AZUREA	p 19
BAGATELLE	p 29
BALKALA	p 19
BALLERINE	p 19
BALLET SHOES BAG - DIV 79	p 180
BELEM	p 104

BELMINE	p 63
BELT - DIV 117	p 24
BERGAMOTE	p 79
BUN ACCESSORIES - DIV 97	p 182
CABRIOLE	p 28
CALISSON	p 79
CALOU	p 85
CANDIDE	p 10
CAPELLA	p 84
CAPRI	p 115
CENTAUR	p 98
CERES	p 123
CEYLAN	p 86
CHARME	p 73
CIRNUM	p 63
CLOVIS	p 105
COLETTE	P 35
CONCERTO	p 29
CONDOR	p 111
CONRAD	p 108
CONVERTIBLE TIGHTS - DIV 03	p 176
CONVERTIBLE TIGHTS - DIV 123	p 178
COTTON RIBBON - DIV 56	p 172
COTTON RIBBON ROLL - DIV 15	p 172
CRISTAL	p 87
CRYBALIDE	p 87
CYPELLA	p 64
CYPRES	p 11
DANCE BELT FULL SEAT	p 112
DANCE BELT MEDIUM	p 113
DANCE BELT NARROW	p 113
DANCE BELT WIDE	p 112
DANUBE	p 80
DAPHNE	p 20
DELIA	p 20
DEMI-POINTE	p 131
DOLLY	p 20
DOLORES	p 16
ELAN	p 106
EMERAUDE	p 7
EMMA	p 48
ENTRECHAT	p 32

EREBUS	p 81
ERINE	p 69
ETERNA	p 51
ETINCELLE	p 71
ETUDE	p 32
EVIDENCE	p 69
FADO	p 21
FAUSTINE	p 9
FELICITE	p 42
FILAO	p 83
FOOTED TIGHTS - DIV 01	p 174
FOOTED TIGHTS - DIV 124	p 178
FOOTLESS TIGHTS - DIV 60	p 177
GALATE	p 7
GALLI	P 13
GEMMA	p 59
GIPSY	p 22
GLISSADE	p 30
GUIMAUVE	p 78
HAMADA	p 105
HARLOW	p 16
HAXO	p 108
HIDALGO	p 102
HORACIO	p 110
IGOR	p 110
IKITA	p 90
ILIADE	p 94
IMPULSE2	p 128
INSTINCT2	p 128
INVISIBLE ELASTIC - DIV 54	p 173
IRIS	p 90
IVAN	p 110
IZALIA	p 87
JASMIN	p 40
JASON	p 111
JUNON	p 122
KAMAE	p 57
KEYCHAIN - DIV 62	p 183
KEYCHAIN - DIV 63	p 183
LAIKA	p 45
LA POINTE SQUARE	p 154
LA POINTE SQUARE EXTRA SOFT	p 156

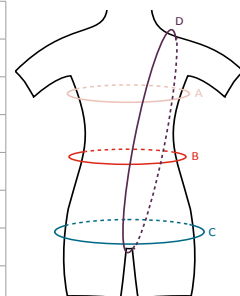
LA POINTE SQUARE HARD	p 159
LA POINTE SQUARE MEDIUM	p 158
LA POINTE SQUARE MORE OPTIONS	p 161
LA POINTE SQUARE REINFORCED HARD	p 160
LA POINTE SQUARE SOFT	p 157
LA POINTE SUR MESURE	p 170
LA POINTE TAPER	p 162
LA POINTE TAPER EXTRA SOFT	p 164
LA POINTE TAPER HARD	p 167
LA POINTE TAPER MEDIUM	p 166
LA POINTE TAPER MORE OPTIONS	p 169
LA POINTE TAPER REINFORCED HARD	p 168
LA POINTE TAPER SOFT	p 165
LAVANDE	p 11
LEATHER KEYCHAIN - DIV 88	p 183
LISERON	p 40
LOBELIA	p 63
LOVINA	p 10
LUPIN	p 98
MACARON	p 22
MAGDA	p 21
MAKALU	p 80
MALONE	p 104
MARCEAU	p 117
MARIE	p 17
MAUVE	p 17
MELEZE	p 80
MELINA	p 21
MENUET	p 89
MERCURY	p 109
MESH BAG - DIV 81	p 180
MESH POUCH - DIV 80	p 180
MIOSOTIS	p 64
NARCISSE	P 52
NAYA	p 86
NEPTUNE	p 124
NEREA	P 36
NOISETTE	p 74

NUAGE	p 74
OBERON	p 111
ODEON	p 117
OMEGA	p 144
OMEGA HARD	p 149
OMEGA MEDIUM	p 148
OMEGA MEDIUM 3/4	p 147
OMEGA REINFORCED HARD	p 150
OMEGA SOFT	p 146
OPERA	p 33
OPUS	p 94
ORION	p 102
PACO	p 117
PAGE	p 16
PALOMINO	p 93
PANDORE	p 93
PATIENCE	p 92
PEGASUS	p 129
PENELOPE	p 94
PIROUETTE	p 28
PIVOINE	p 93
PLUTON	p 121
POINTE SHOE BAG - DIV 82	p 180
POINTE SHOE ELASTIC - DIV 55	p 172
POUCH - DIV 94	p 181
PRALINE	p 74
PRELUDE	p 33
PRE-CUT ELASTIC - DIV 58	p 173
PRE-CUT INVISIBLE ELASTIC - DIV 59	p 173
PRESTON	p 104
QUILTED TOTE BAG - DIV 92	p 181
REINE	p 61
REMOVABLE BRA INSERT	p 17
REVERENCE	p 30
ROCK ROSIN - DIV 13	p 173
ROMEO	p 114
RUBY	p 14
SATIN RIBBON - DIV 57	p 172
SATIN RIBBON ROLL - DIV 31	p 172
SATURNE	p 125
SCRUNCHIES - DIV 42	p 182

SCRUNCHIES - DIV 108	p 182
SEPIK	p 38
SEPHIRA	P 39
SERENITE	p 52
SMALL TOTE BAG - DIV 93	p 181
SOLO	p 102
SONATE	p 89
STRETCH INSERT SATIN RIBBON - DIV 61	p 172
SUPERBE	p 76
SYRMA	p 76
TAGE	p 83
TANGO	p 114
THALIA	p 7
TIARA	p 86
TOE PADS - DIV 52	p 173
TULIPE	p 76
UTAMI	p 87
VERSAO	p 111
VESTA	p 120
VOLANTE	p 14
WILSON	p 101

SIZE CHART - METRIC MEASUREMENT

GIRL SIZES	AGE 2/4	AGE 4/6	AGE 6/8	AGE 8/10	AGE 10/12	AGE 12/14
Height (Size)	90 - 105 cm	100 - 115 cm	110 - 125 cm	120 - 135 cm	130 - 145 cm	140 - 155 cm
WEIGHT:	10 - 15 kg	15 - 20 kg	17 - 27 kg	25 - 35 kg	30 - 40 kg	35 - 45 kg
A: Chest Width	50 - 55 cm	55 - 60 cm	60 - 65 cm	65 - 70 cm	70 - 75 cm	75 - 80 cm
B: Waist	45 - 50 cm	49 - 54 cm	50 - 55 cm	52 - 57 cm	53 - 58 cm	55 - 60 cm
C: Hips	50 - 55 cm	55 - 60 cm	60 - 65 cm	65 - 70 cm	72 - 78 cm	78 - 83 cm
D: Girth	80 - 90 cm	90 - 100 cm	100 - 110 cm	110 - 120 cm	115 - 125 cm	125 - 135 cm



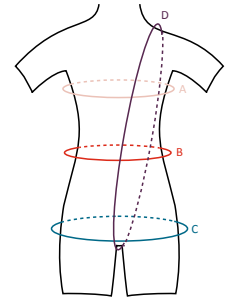
WOMEN SIZES	XS	S	M	L	XL	XXL	XXXL
Height (Size)	150 - 165 cm	160 - 175 cm	165 - 175 cm	165 - 180 cm	165 - 180 cm	165 - 185 cm	170 - 190 cm
WEIGHT:	40 - 50 kg	45 - 55 kg	50 - 60 kg	60 - 70 kg	70 - 80 kg	80 - 90 kg	90 - 100 kg
A: Chest Width	80 - 85 cm	85 - 90 cm	90 - 95 cm	95 - 100 cm	100 - 105 cm	105 - 110 cm	110 - 115 cm
B: Waist	55 - 60 cm	60 - 65 cm	65 - 70 cm	70 - 75 cm	75 - 80 cm	80 - 85 cm	85 - 90 cm
C: Hips	82 - 88 cm	87 - 92 cm	92 - 97 cm	95 - 100 cm	100 - 105 cm	105 - 110 cm	110 - 115 cm
D: Girth	132 - 140 cm	140 - 148 cm	148 - 156 cm	155 - 164 cm	164 - 172 cm	168 - 176 cm	175 - 180 cm

BOYS SIZES	AGE 2/4	AGE 4/6	AGE 6/8	AGE 8/10	AGE 10/12	AGE 12/14
Height (Size)		100 - 120 cm	113 - 133 cm	124 - 144 cm	135 - 155 cm	140 - 165 cm
WEIGHT:		15 - 20 kg	20 - 27 kg	25 - 35 kg	30 - 40 kg	35 - 45 kg
A: Chest Width		55 - 60 cm	60 - 65 cm	64 - 69 cm	68 - 75 cm	72 - 79 cm
B: Waist		52 - 57 cm	56 - 55 cm	58 - 63 cm	60 - 65 cm	63 - 68 cm
C: Hips		55 - 60 cm	60 - 65 cm	65 - 70 cm	71 - 78 cm	75 - 80 cm
D: Girth		90 - 100 cm	100 - 110 cm	110 - 120 cm	115 - 125 cm	125 - 135 cm

MEN SIZES	XS	S	M	L	XL
Height (Size)	155 - 170 cm	160 - 175 cm	165 - 180 cm	170 - 185 cm	170 - 195 cm
WEIGHT:	45 - 55 kg	55 - 65 kg	65 - 75 kg	75 - 85 kg	85 - 95 kg
A: Chest Width	76 - 83 cm	83 - 91 cm	91 - 97 cm	97 - 104 cm	104 - 110 cm
B: Waist	65 - 70 cm	70 - 75 cm	75 - 80 cm	80 - 85 cm	85 - 90 cm
C: Hips	80 - 85 cm	85 - 90 cm	90 - 95 cm	95 - 100 cm	100 - 105 cm
D: Girth	130 - 145 cm	140 - 160 cm	145 - 165 cm	150 - 170 cm	155 - 170 cm

SIZE CHART - IMPERIAL MEASUREMENT

GIRL SIZES	AGE 2/4	AGE 4/6	AGE 6/8	AGE 8/10	AGE 10/12	AGE 12/14
Height (Size)	3'1" - 3'5"	3'3" - 3'9"	3'7" - 4'1"	3'11" - 4'5"	4'3" - 4'9"	4'7" - 5'1"
WEIGHT:	22 - 33 lbs	33 - 44 lbs	37 - 59 lbs	55 - 77 lbs	66 - 88 lbs	77 - 99 lbs
A: Chest Width	19 - 21"	21 - 23"	23 - 25"	25 - 27"	27 - 29"	29 - 31"
B: Waist	18 - 20"	19 - 21"	20 - 22"	21 - 23"	21 - 23"	22 - 24"
C: Hips	20 - 22"	22 - 24"	24 - 26"	26 - 28"	29 - 31"	31 - 33"
D: Girth	31 - 35"	35 - 39"	39 - 43"	43 - 47"	45 - 49"	49 - 53"



WOMEN SIZES	XS	S	M	L	XL	XXL	XXXL
Height (Size)	4'11" - 5'5"	5'3" - 5'9"	5'5" - 5'9"	5'5" - 5'11"	5'5" - 5'11"	5'5" - 6'	5'7" - 7'1"
WEIGHT:	88 - 110 lbs	99 - 121 lbs	110 - 132 lbs	132 - 154 lbs	154 - 176 lbs	176 - 198 lbs	198 - 220 lbs
A: Chest Width	31 - 33"	33 - 35"	35 - 37"	37 - 39"	39 - 41"	41 - 43"	43 - 45"
B: Waist	21 - 24"	24 - 26"	26 - 28"	28 - 30"	30 - 32"	32 - 34"	33 - 35"
C: Hips	33 - 35"	35 - 37"	37 - 39"	38 - 40"	39 - 41"	41 - 43"	43 - 45"
D: Girth	52 - 55"	55 - 58"	58 - 62"	62 - 65"	65 - 68"	66 - 69"	68 - 71"

BOYS SIZES	AGE 2/4	AGE 4/6	AGE 6/8	AGE 8/10	AGE 10/12	AGE 12/14
Height (Size)		3'3" - 3'11"	3'9" - 4'4"	4'1" - 4'9"	4'5" - 5'1"	4'7" - 5'5"
WEIGHT:		33 - 44 lbs	44 - 60 lbs	55 - 77 lbs	66 - 88 lbs	77 - 99 lbs
A: Chest Width		22 - 24"	24 - 26"	25 - 27"	27 - 29"	29 - 31"
B: Waist		21 - 23"	22 - 24"	23 - 25"	25 - 26"	25 - 27"
C: Hips		22 - 24"	24 - 26"	26 - 28"	28 - 30"	30 - 32"
D: Girth		35 - 39"	39 - 43"	43 - 47"	45 - 49"	49 - 53"

MEN SIZES	XS	S	M	L	XL
Height (Size)	5'1" - 5'7"	5'3" - 5'9"	5'5" - 5'11"	5'7" - 6'1"	5'7" - 6'5"
WEIGHT:	99 - 121 lbs	121 - 143 lbs	143 - 165 lbs	165 - 187 lbs	187 - 209 lbs
A: Chest Width	31 - 33"	33 - 36"	36 - 38"	38 - 41"	41 - 44"
B: Waist	26 - 28"	28 - 30"	30 - 32"	32 - 34"	34 - 36"
C: Hips	32 - 34"	34 - 36"	36 - 38"	38 - 40"	40 - 42"
D: Girth	51 - 57"	55 - 62"	57 - 65"	59 - 67"	61 - 67"

SIZE CHART - TIGHTS

METRIC MEASUREMENT

DIV 01 – DIV 60

SIZES	4/6	6/8	8/10	10/12	XS	S	M	L
HEIGHT IN CM	100 - 115	110 - 125	120 - 135	130 - 145	150 - 165	160 - 175	165 - 175	165 - 180
WEIGHT IN KG	15 - 20	17 - 27	25 - 35	30 - 40	40 - 50	45 - 55	50 - 60	60 - 70

DIV 03 – DIV 123 – DIV 124

SIZES	4/8	8/12	12/14	S/M	L/XL
HEIGHT IN CM	100 - 125	120 - 145	140 - 155	160 - 175	165 - 180
WEIGHT IN KG	15 - 27	25 - 40	35 - 45	45 - 60	60 - 80

IMPERIAL MEASUREMENT

DIV 01 – DIV 60

SIZES	4/6	6/8	8/10	10/12	XS	S	M	L
HEIGHT IN INCHES	3'3" - 3'9"	3'7" - 4'1"	3'11" - 4'5"	4'3" - 4'9"	4'11" - 5'5"	5'3" - 5'9"	5'5" - 5'9"	5'5" - 5'11"
WEIGHT IN LBS	33 - 44	37 - 59	55 - 77	66 - 88	88 - 110	99 - 121	110 - 132	132 - 154

DIV 03 – DIV 123 – DIV 124

SIZES	4/8	8/12	12/14	S/M	L/XL
HEIGHT IN INCHES	3'3" - 4'1"	3'11" - 4'9"	4'7" - 5'1"	5'3" - 5'9"	5'5" - 5'11"
WEIGHT IN LBS	33 - 59	55 - 88	77 - 99	99 - 132	132 - 176

SIZE CHART - POINTE SHOES & DEMI PAINTE

SIZE UK	13	1	1.5	2	2.5	3	3.5	4	4.5	5	5.5	6	6.5	7	7.5	8	8.5	9
SIZE US	1	3.5	4	4.5	5	5.5	6	6.5	7	7.5	8	8.5	9	9.5	10	10.5	11	11.5
SIZE EUR	32	33	33.5	34	35	35.5	36	36.5	37	38	39	39.5	40	41	41.5	42	42.5	43
SIZE JAPAN	19,8	20,4	20,8	21,1	21,8	22,1	22,4	22,8	23,1	24,2	24,9	25,5	25,8	26,4	26,8	27,2	27,5	27,8

SIZE CHART - BALLET SHOES

CHILD

EURO	23	24	25	26	27	28	29	30	31	32	33
US	7	8	8,5	9	10	10,5	11	12	12,5	13,5	1
JAPAN	14,3	15	15,6	16,3	17	17,6	18,3	19	19,6	20,3	21
UK	6	7	8	8.5	9	10	11	11.5	12.5	13	1

WOMEN

EURO	34	35	36	37	38	39	40	41	42	43	44	45	46
US	3	4	5	5,5	6,5	7	8	9	9,5	10	11	12	13
JAPAN	21,6	22,3	23	23,6	24,3	25	25,6	26,3	27	27,6	28,3	29	29,6
UK	2	2.5	3.5	4	5	5.5	6.5	7.5	8	9	9,5	10	11

MEN

EURO	34	35	36	37	38	39	40	41	42	43	44	45	46	47	48	49	50
US	2,5	3,5	4,5	5	6	6,5	7	8	8,5	9	10	11	12	12,5	13	14	15
JAPAN	21,6	22,3	23	23,6	24,3	25	25,6	26,3	27	27,6	28,3	29	29,6	30,3	31	31,6	32,3
UK	2	2,5	3,5	4	5	5,5	6,5	7,5	8	9	9,5	10	11	12	12,5	13	14

Stretch Canvas Soft Shoes: We suggest opting for two sizes larger than your regular fit. If you want more support, sticking to your usual size or going one size up would be ideal.

TURNER SHOES

	XS	S	M	L	XL					
EURO	34	35	36	37	38	39	40	41	42	43
US	4	4.5	5.5	6.5	7	7.5	8	8.5	9	9.5
UK	2	2.5	3.5	4.5	5	5.5	6.5	7	8	9
JAPAN	21	21,5	22	22,5	23,5	24,5	25,5	26	26,5	27,5

Wear Mei

Designed in France