

NEWSLETTER



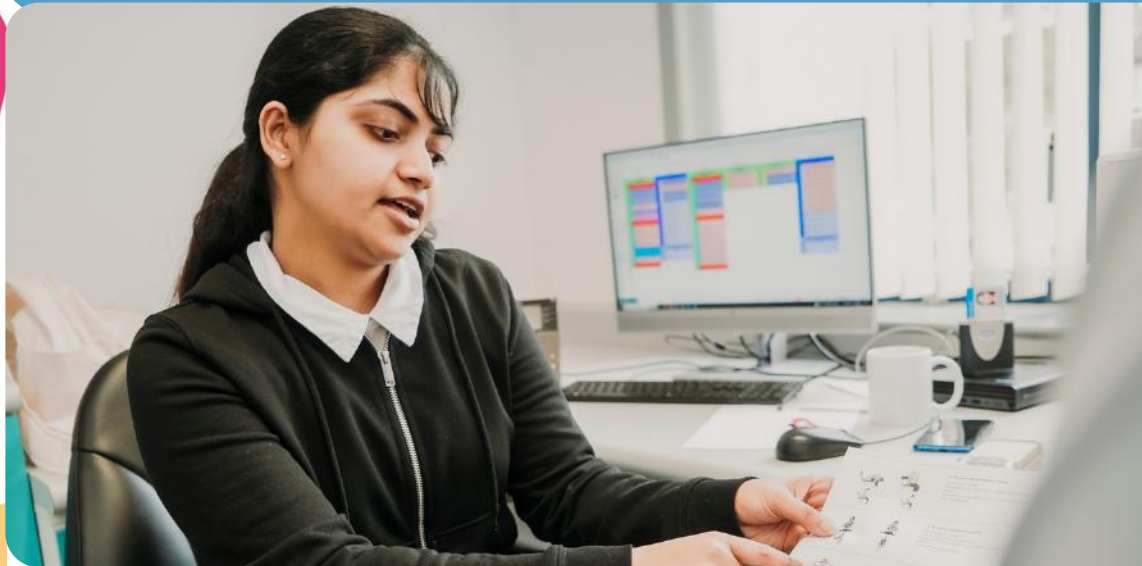
ddlmc.thehubplus@nhs.net
www.thehubplus.co.uk
07883 328933

The Hub



DERBYSHIRE

SEPTEMBER 2025



As a not-for-profit organisation, the team at **The Hub Plus** put **YOU** first. We care about people and want to help **YOU** and **YOUR** team to achieve the most with your wellbeing, aspirations, career goals, and empower personal growth.

[Explore The Hub Plus website](#)

The Hub Plus - Supporting our General Practice family on their Primary Care journey.

People Promise



IN THIS ISSUE:

[EARLY PRACTICE SUPPORT SCHEME](#)

[UNIVERSAL QUEST - PROTECTED LEARNING TIME](#)

[THE DERBYSHIRE GENERAL PRACTICE LONG SERVICE AWARDS](#)

[TRAINING & LEARNING OPPORTUNITIES](#)

[ADDITIONAL SUPPORT](#)

What's new in Derbyshire Primary Care

Launching: Derbyshire's Early Practice Support Scheme (EPSS)

We're pleased to launch the Early Practice Support Scheme (EPSS). A locally funded, revised version of the nationally funded New to Practice scheme, now tailored for Derbyshire's newly qualified GPs and nurses.

Although national funding has ended, Derbyshire is committed to continuing this vital support. EPSS builds on five successful years of the New to Practice programme, offering a structured, nurturing environment for clinicians in their first year of general practice.



What You'll Gain:

Quarterly education sessions covering clinical and non-clinical topics

Networking opportunities through events and peer groups

Access to CPD resources, including recorded sessions for flexible learning

Six hours of mentoring with an experienced GP over 12 months

To support participation in the scheme, funding is available to help cover key elements such as education and CPD.

For more information, please visit our website:

<https://www.thehubplus.co.uk/early-practice-support-scheme>

In The World Of Derbyshire Primary Care

Universal QUEST - Protected Learning Time

Why not join one of our upcoming focused learning sessions designed to support your Protected Learning Time on Wednesday afternoons.

Whether you're clinical or non-clinical staff, there's something for everyone. Check out the upcoming sessions below:

Wed 17th September, 13:30–15:30: Supporting Deaf Patients (with Basic BSL training) (All Staff)

Wed 17th September, 13:30–15:30: Lung Cancer Screening & Diagnosis

Wed 8th October, 13:30–15:30: Cultural Sensitivity in Patient Care & Pharmacy First Training (All Staff)

Wed 8th October, 13:30–15:30: Cardio-Renal Metabolic Results (Clinical Staff)

Wed 15th October, 13:30–15:30: Cultural Sensitivity in Patient Care & Pharmacy First Training (All Staff)

Wed 15th October, 13:30–15:30: Cardio-Renal Metabolic Results (Clinical Staff)

Work Experience & Insight days: We need you!

We are receiving an increasing number of requests for work experience, shadowing and insight days from young people eager to explore careers in General Practice.

Would your practice be willing to open its doors for a day or two to host an aspiring healthcare professional?

You don't need to provide formal assessments or paperwork, just a welcoming environment and a glimpse into the rewarding world of General Practice.

If your practice is interested or would like to learn more, please get in touch ddlmc.thehubplus@nhs.net or fill in the [Expression of Interest Form](#)

The Derbyshire General Practice Long Service Awards

Cohort 3 is open!

If you've reached this milestone—or know someone who has—don't miss this opportunity to celebrate a career of service and impact.

The **Derbyshire General Practice Long Service Awards** proudly recognise the extraordinary commitment of individuals who have dedicated 25 years or more to the NHS.

These awards are our way of saying thank you to the professionals whose passion for primary care has transformed lives and strengthened communities across Derbyshire.



We've gathered at stunning venues to celebrate more than 150 incredible recipients—and now it's your turn to be part of this special tradition.

Apply today or nominate a colleague by visiting our website to download the application form.

Training & Learning Opportunities

GP Study Day October 2025

A full day of learning, designed for you

Join us for a dynamic GP training day with bitesize clinical updates, practical non-clinical workshops, and top guest speakers. Tailored for GPs and ACPs, but open and valuable to all primary care professionals.

All for the incredible cost of £45 (Derby & Derbyshire clinicians) | £85 (non-Derbyshire clinicians)

Learn. Connect. Refresh.



14/10/25



09:15-16:00



RTC Business Park

[CLICK HERE TO BOOK](#)

LGBT+ Awareness in Primary Care: Practical Skills for Staff



24/09/25



09:30-10:30

[CLICK HERE TO MORE](#)

Motivational Interviewing Study Day



02/10/25



09:00-16:00

[CLICK HERE TO MORE](#)

Basic Life Support Training-October 2025



21/10/25



13:30-15:00

[CLICK HERE TO MORE](#)

Taking a Population Health Approach to General Practice



22/10/25



14:00-15:00

[CLICK HERE TO MORE](#)

Additional Support



**OLIVER'S
CAMPAIGN**

Please find links to tier 1 part 2 of the NHS England Oliver McGowan mandatory training in learning disabilities and autism below.

Webinars last for 60 minutes. You must complete the full session for compliance to be recorded.

- **Wednesday 17th September - 1500 – 1600** - [Join the meeting now](#)
- **Monday 22nd September - 1000 – 1100** - [Join the meeting now](#)
- **Wednesday 24th September -1500 – 1600** - [Join the meeting now](#)
- **Monday 29th September - 1000 – 1100** - [Join the meeting now](#)

Prior to the session, please fill in following [form](#).

Derbyshire Lead GPN Monthly Forum - September 2025

- Brief update on local, regional and national news relevant to GPNs.
- Update on training and development opportunities offered by The Hub Plus.
- Educational speaker on a topic relevant to Lead GPNs with opportunity for questions and discussions.
- Opportunity to network and share best practice with GPN Leads across Derbyshire ICB.

Date: Tuesday 23rd September 2025

Time: 13:30 - 15:00

Location: Online

Please Note: This event is only open for one Lead GPN or a representative from each Practice across Derby & Derbyshire ICB. Please contact charlotte.darby6@nhs.net for more information.

[Click here to join](#)

Derby and Derbyshire GP Satisfaction and Retention Survey 2025

My name is Dr Jo Marval, and I am currently doing a fellowship with The Hub Plus looking at retention of GPs in Derby and Derbyshire. I am wanting to understand the needs of local colleagues and evaluate interventions which will promote staff retention. I am also looking at ways to retain the skills of GPs towards the end of their career.

The following questionnaire will help me capture information on your experience, challenges and support needs to help identify what is currently working well and where additional resources are needed.

I would be grateful if you would complete [this form](#) and accept the invitation to attend a short interview if you would like to discuss in more detail your experience and ideas. Thank you in anticipation of your support.

NHS England is doing initial scoping work to understand the blockers and barriers GPs face when identifying unpaid carers. This links into the 10-Year Health Plan, which has put a renewed focus on care planning and carer identification.

Does anyone know of any local GPs who may be open to having a conversation with the national team about this? If so, please share ask them to contact Cathie Cunnington (catherine.cunnington@nhs.net) at NHSE.

Calling All Practice Managers - (LARC) Survey

We are inviting your practice to take part in a vital survey developed with the Derbyshire Women's Health Hub. This survey is designed to assess current service provision and training needs in women's health, with a focus on Long-Acting Reversible Contraception (LARC).

Women across Derby and Derbyshire continue to face significant challenges in accessing timely, appropriate care. Recent findings show:

- A 23.5% increase in new STI diagnoses in Derby and 31.6% in Derbyshire between 2021 and 2022.
- Access to LARC services is inconsistent, with many practices lacking trained staff or dedicated time to offer these essential contraceptive options.
- Community engagement in 2024–2025 revealed that women often experience fragmented services, long waits, and limited postnatal contraceptive support, especially after abortion or childbirth.

These gaps are not just numbers they represent real barriers to care for women in our communities.

Our Goal: 100% Practice Participation

<https://forms.office.com/e/RK4Z8w1SKq>

Please complete the survey by **Monday 6th October**

Health Inequalities Network Meeting

A space for colleagues who are passionate about addressing health inequalities to come together, share ideas and support change.

Supported by **The Hub Plus**.

Thursday 9th October 1pm - 1:45pm

[Click here to join](#)

For further information please contact zohra.jafri1@nhs.net
or sara.bains3@nhs.net



NHS England is conducting a feedback-based review of the commissioned module: CNO002 Discovering a Nursing Career in General Practice and would greatly appreciate your expertise and input.

The survey is open widely, so please forward this email to any colleagues, learners and stakeholders who can support this review. It is an anonymous survey, and we welcome your honest feedback. The results will help shape the future of this training and education.

Closing date for the survey is midday Thursday 18 September 2025.

Link to Survey: [Review - CNO002 Discovering a Nursing Career in General Practice](#)

PLT Quest Training - Pharmacy First & Cultural Sensitivity in Patient Care – 08/10/25 & 15/10/25

The Hub Plus are excited to offer a 2-part special for October Quest afternoon!

- **13:30 to 14:25 - Role of Cultural Sensitivity in Patient Care**
- **14:35 to 15:30 - Pharmacy First**

Both sessions are delivered live online and open to all roles in Primary Care.



Aims of the cultural sensitivity session:

- Enhance patient satisfaction and trust
- Improve communication with patients from diverse backgrounds
- Reduce misunderstandings and potential complaints
- Foster an inclusive and welcoming healthcare environment
- Strengthen professional confidence in handling cultural diversity

Aims of the Pharmacy First session:

- Information on what services community pharmacy offer
- Understanding of who is appropriate for referral to a community pharmacy
- What a patient can expect once referred including the cost of any treatment
- How to complete an electronic referral to a community pharmacy

This session can be delivered in person for your practice/PCN. For more information please contact paula.whitehurst1@nhs.net

Infant Feeding Training – Now Available for Primary Care Teams

As part of a key priority in the Infant Feeding Strategy, a comprehensive and fully funded training package is now available to support primary care colleagues in enhancing their knowledge and confidence around infant feeding.

The training includes three key components:

Level 1: Foundation Video Series

- Designed for all general practice staff, including non-clinical roles. This series builds essential knowledge for everyone from receptionists to clinicians and practice managers.

Level 2: Clinical Training

- Tailored for clinical staff, this module dives deeper into common infant feeding challenges seen in general practice, helping to boost confidence and clinical decision-making.

Level 3: Clinical Signposting Toolkit

- A practical reference guide structured around common presenting concerns. This tool supports clinicians and staff by offering quick access to guidance and enhancing the Level 2 training experience.

[Access the training now:](#)