

Independent Herald

DOES YOUR TV RECEPTION GIVE YOU A HEADACHE?
 Get your TV reception problems fixed by our experts. Free TV reception tests on your system to ensure you have the best possible picture available using our professional test equipment.
WE COVER THE GREATER WELLINGTON AREA Wellington, Porirua, Hutt Valley and Kapiti areas. We have over 15 vans on the road.
FREEVIEW DIGITAL/SATELLITE TV We can provide you with local and around the world television and radio stations with no monthly charges.
WHOLESALE/RETAIL SALES Aerials, satellite dishes, receivers and accessories
TV1, TV2, TV3 and TV4 Not only do we provide a full warranty, but we also guarantee that you will be satisfied with the results!
www.aerialmaster.co.nz
Phone 499 5353
AERIAL MASTER
SPECIALISING IN ALL TELEVISION RECEPTION

Thursday May 21, 2026



Today 11-16



Friday 11-16



Saturday 9-16



Sunday 8-15

Phone: (04) 587 1660

Knighthood for 30 years service



By Frank Neill

Professor Graham Le Gros, who led the Kelburn-based Malaghan Institute for 30 years and is its current Deputy Chair, became a Knight Companion of the New Zealand Order of Merit (KNZM) on 19 May.

Professor Le Gros's knighthood was presented to him by the Governor-General, Dame Cindy Kiro at an investiture ceremony at Government House.

Continued on page 2.

Professor Graham Le Gros and the Governor-General Dame Cindy Kiro at his investiture. Photo: Supplied.



GET READY TO LET LOOSE, LAUGH, AND PLAY!

AGES 5-14

About **Kidz Oscar**
 Your best out of school care under the rainbow.

- Before School Care
- After School Care
- Holiday Base programme

Contact us for more information:

Ph: 04 461 6347
 Paparangi School, Beazley Ave, Paparangi
 Email: aboutkidzscar@gmail.com

STEVE FEJOS



“Overwhelming knowledge of the property market and commitment.”

Steve Fejos M 027 562 1777 E sfejos@loweandco.nz

Lowe & Co
 REALTY

Dalbitz FAST50

Medium Residential Office of the Year 2018 & 2019 REINZ Awards

PART OF THE ANDCO GROUP
 ANDCO MEANS MORE

Andco Realty Limited (traded under NZX:2004)

Active Feet Podiatry

“Caring for your feet”



Services We Offer Include:

- Sports injuries
- Family Foot Care
- Verrucae
- Skin and Nail problems
- Orthotic Services

Ph: 04 473 8696

Level 2, 85 The Terrace, Wellington
 (opposite Solnet House and Aurora Terrace).

How to reach us

Independent
Herald

Phone (04) 587 1660

www.independentherald.co.nz

**REPORTER****Frank Neill**

herald@wsn.co.nz

027 490 3916

**NATIONAL SALES****Les Whiteside**

les@wsn.co.nz

021 360 008

**SALES****Steve Maggs**

steve@wsn.co.nz

027 765 8303

**SALES****Brenda Ingram-Johnson**

brenda@wsn.co.nz

021 640 152

CLASSIFIED SALES

classifieds@wsn.co.nz

Leading nationally significant research

Continued from page 1.

He was made a KNZM for services to medical science.

Professor Le Gros led the Malaghan Institute from 1994 to 2024.

While Director from 2014, Professor Le Gros more than doubled the size of the Malaghan Institute and grew its operating budget from \$7.5 million to more than \$30 million in 2024.

"His leadership in the securing of significant funding and maintenance of long-term partnerships nationally and internationally has enabled the Institute to lead nationally significant research programmes with global relevance to improve human health," his award citation says.

"Since 2014, the Institute has developed major new programmes in cancer immunotherapy, vaccine development, inflammatory disease and RNA technologies, and a focus on translational science from laboratory to clinic.

"His leadership in bringing CAR T-cell therapy to New Zealand to build the Institute's cancer immunotherapy expertise and capability has been a defining achievement of this period.

"During the COVID-19 pandemic, he played a key role in driving the development of domestic vaccine capability, and

under his leadership the Vaccine Alliance Aotearoa New Zealand was established.

"Professor Le Gros has supported regional equity and capability, guiding emerging research organisations, and has helped shape a new generation of scientific leadership in New Zealand," his citation says.

He is an active and respected research scientist internationally, leading a research programme in allergic and parasitic diseases.

A Fellow of the Royal Society of New Zealand, in 2014 he was made a Companion of the New Zealand Order of Merit for his services to medical research.

The Malaghan Institute is a fully independent research institute that researches medical problems to find solutions.

It rents its Kelburn Parade premises from Victoria University of Wellington.

The institute "is unique to New Zealand," Professor Le Gros says.

One of the highlights of his career with the Malaghan Institute has been "getting to the bottom of how several of the parasitic worms can be good or bad for you.

"Another is getting an innovative T-Cell cancer therapy going here in New Zealand. That's been a big goal."

A third highlight has been gaining an understanding of the "exciting things about how the



Professor Graham Le Gros. Photo: Supplied.

immune system works.

"I've been involved with that over in the [United] States, Switzerland and New Zealand."

"And most of all, it has been

helping develop the Malaghan Institute into a 150 person dedicated institution that is focused on finding full solutions for people in New Zealand."

LA CLOCHE

COME DOWN AND CELEBRATE
OUR 20TH BIRTHDAY WITH US
AT LA CLOCHE CAFE IN KAIWHARAWHARA

20 YEARS



CARPARKS NOW AVAILABLE AT SPOTLIGHT
FOR LA CLOCHE CUSTOMERS



Greg O'Connor MP for Ōhāriu

There is plenty of doom and gloom around at the moment so it's great to report something very positive for the Northern Suburbs and Wellington generally. It's the opening of Te Ara Tupua, the seawall between Ngauranga and Petone which doubles as a cycle and walkway. That previously inaccessible part of our spectacular harbour can now be accessed for recreational activities like fishing and even swimming for the adventurous and will provide a good commuter option either way. Wellington is a great city, and despite all the hype around Christchurch with their new stadium and other facilities largely paid for by the taxpayer post-earthquake, it will never represent the vibrancy and sheer interestingness of Wellington.

However, we Wellingtonians need to become our best advocates, and that will help counter the damage inflicted by this coalition Government, whose leader hasn't

got a good word to say about the place.

People who complain to me about the downtown often haven't been for a walk-through town or along the waterfront for years, and are often pleasantly surprised when they do venture in.

With worldwide volatility and travel costs blowing out, it's a good time to look a bit closer to home for entertainment, and Wellington has it in the form of live shows and places of interest. Add to that our newest feature on the harbour, and we have no excuse not to continue to justify our label as "the coolest little capital in the world".

Watching the infighting between the coalition government partners on display in parliament would be regarded as free entertainment if the implications weren't so serious for the country. Yet another reason to appreciate what we have here and importantly, spend our money on local businesses where possible. That is what keeps a city vibrant.

You can contact my office on **04 478 3332** or email
Greg.OConnor@parliament.govt.nz.



WCC decisions not in city's best interest survey shows

Wellington City Council does not make decisions that are in the best interests of the city, a significant number of people indicated in a survey released by the Council last week.

The 2026 Residents Monitoring Survey (RMS) – conducted in February – is Wellington City Council's annual check-in with residents to understand their views on a wide range.

It showed that 16% of those surveyed strongly disagreed and 23% disagreed that the council makes decisions that are in the best interests of the city.

Another 34% said they neither agreed or disagreed.

Only 3% of respondents said they strongly agreed and 23% said they agreed.

The good news on those figures are that 4% more people considered the council makes decision in the best interests of the city than in the 2025 survey.

In marked contrast, 70% of people said that "Wellington in a great place to live, work and play". This is slightly up on the 2025 figure of 67%.

Respondents are still very happy with the frontline services like libraries, parks and pools.

Mayor Andrew Little says early signs of improvement are assuring, but it is also a clear message to everyone at the council that the work to restore public trust and confidence must continue.

"Restoring trust and confidence in the council starts by ensuring communities feel their voice matters and that the council makes good decisions in the interests of Wellingtonians," he says.

"The Residents Monitoring Survey shows that we're making steps in the right direction, with a big job ahead to keep moving in the right direction.

"Wellington is a place full of big ideas, with talented people leading the way.

"It's our job at council to listen, support



and enable Wellingtonians to thrive," the Mayor says.

Wellington City Council Chief Executive Matt Prosser says the RMS data clearly shows what Wellingtonians care about and where the organisation can do better.

"Wellingtonians value the services and events our kaimahi deliver, but the survey shows there's more to do.

"We are reducing costs while prioritising

essential infrastructure and aligning to the direction set by Mayor Little and elected members within the adopted Triennium Plan.

"Change won't happen overnight, but residents will start to see it in our decisions and how we deliver," Mr Prosser says.

The RMS summary and full report, plus previous surveys, is available on the Wellington City Council website.



SCAN ME

Lesvos Shoe & Bag Repairs



- Bags
- Shoes
- Keys
- Batteries

Wellington Railway Station and Plimmer Steps

04 472 8430

Wellington Station Bunny Street, Pipitea, Wellington 6011

WRIGHTS HILL FORTRESS

King's Birthday - OPEN DAY -

MONDAY 1ST JUNE 2026
10AM - 4PM

Visit the historic
WORLD WAR TWO WRIGHTS
HILL FORTRESS in Karori.

Self guided tours. Lots of fun for the family.

Refreshments & picnic spots.

From Karori Rd, turn left into Campbell St, to Wrights Hill Rd.

Follow the signs. Limited car parking at the hill summit.

Use walking tracks. Bring a torch with you!

Family Pass: \$20
(2 adults+3 children under 15)
Adults: \$10 Child: \$5
(CASH only: no EFTPOS)
Enquiries:
(04) 4768 593



Greg O'Connor MP for Ōhāriu

Spokesperson for Courts and Veterans' Affairs
Assistant Speaker

Get in touch

My office is open 9am - 4pm
Monday to Friday

04 478 3332

greg.oconnor@parliament.govt.nz

2/18 Moorefield Road, Johnsonville, Wellington

Labour.org.nz/gregoconnor

[f /GregOhariu](https://www.facebook.com/GregOhariu)



Authorised by Greg O'Connor MP,
Parliament Buildings Wellington.

Hooked on local news?

Cast your support to our advertisers. They help bring you the stories that matter!



Independent Herald

Phone (04) 587 1660

SALES

Steve 027 765 8303 E: steve@wsn.co.nz

Brenda 021 640 152 E: brenda@wsn.co.nz

Les Whiteside 021 360 008 E: les@wsn.co.nz

REPORTER Frank Neill 027 490 3916 E: herald@wsn.co.nz

www.independentherald.co.nz

Two missing people last seen in Karori

The Wellington District Police are asking people to let them know if they have seen two people who have gone missing and were last seen in Karori – Sahana and William.

Sahana, who is aged 14, was last seen in Karori on Sunday 17 May.

She is approximately 165cm tall and of small build, with black/tinged red long straight hair.

Sahana has long fake eyelashes and nails.

She was last seen wearing dark oversized track pants, a crop top and a dark blue hoodie sweat top.

It is believed Sahana is in the Wellington area and Police have concerns for her welfare.

“Please ring 111 if you know Sahana and you have currently sighted her,” the Police say.

“Please keep sight of Sahana until Police arrive.

“If you don’t know Sahana personally but you believe that you have seen her, please ring 105 to update the file.”

The related file number is 260518/4224.

The Police are also asking for the public’s help finding William, who was last seen at Marsden Village in Karori getting onto a bus.

The 13-year-old was reported missing on Saturday 16 May.

Police have conducted initial enquiries but have been unable to locate him and are now



William, last seen in Karori, who was reported missing on 16 May. Photo: Supplied.

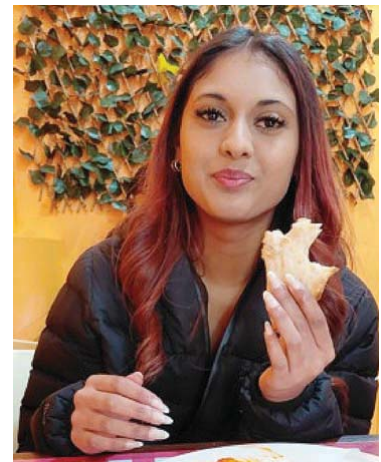
asking for the public’s assistance.

William is approximately 180cm tall and of thin build.

He has dark blonde hair, shaved sides and back, short on top. He was last seen wearing a black or grey hoodie and Canterbury track pants.

Police and William’s family have concerns for his welfare and would like to find him as soon as possible.

If you have seen William, or have any information on where he may be, please contact



Sahana, who was last seen in Karori on 17 May.

Police immediately through 111 if you see him now, or 105 for non-urgent information.

Please reference file number 260517/1012.

People can also provide information anonymously through Crime Stoppers on 0800 555 111.

SAVE ON PETROL!

Now is the time to learn to ride a motorcycle

Basic handling and CBTA restricted and full licence assessment



TWO BALD BIKERS
MOTORCYCLE TRAINING

BOOK TODAY!

Tel: 0800 560 022

Email: enquiries@twobaldbikers.co.nz

Local on and off ramp closures

Road work will result in night closure for the Johnsonville and Newlands off ramps to State Highway 1 this week.

Wellington Transport Alliance crews will be carrying out a range of maintenance works and repairs at the Johnsonville north bound and south bound off ramps, and the Newlands south bound off ramp.

This will see these ramps closed to all traffic.

Networks began on Tuesday 19 May and continue to Thursday 21 May between 9pm and 4:30am.

Contractors are working on traffic signal infrastructure and painting new line markings at the Johnsonville north bound off ramp.

This off ramp is being closed on Tuesday 19 May and Wednesday 20 May from 9pm to 4:30am.

Drivers travelling northbound to Johnsonville will need to instead travel north to the Grenada Interchange to turn around and travel south via the Grenada south bound off ramp, then use the Johnsonville south bound off ramp to get to Johnsonville.

Work crews will be conducting pavement testing at the Newlands south bound on ramp. This is done to check wear and tear on the road surface and is critical for maintenance planning.

This on ramp is being closed on Wednesday 20 May and Thursday 21 May from 9pm to 4:30am.

Drivers wanting to travel southbound from Newlands will need to instead travel north using the Newlands north bound on ramp. Travel to Grenada Interchange to turn around and travel south via the Grenada south bound on ramp.

Work crews will be replacing streetlight poles on the Johnsonville south bound off ramp.

This off ramp will be closed on Thursday 21 May from 9pm to 4:30am.

Southbound traffic will have to detour by continuing south, turning around at Ngauranga, then travelling north and using the north bound Johnsonville off ramp.

Drivers should allow extra time for their journeys.

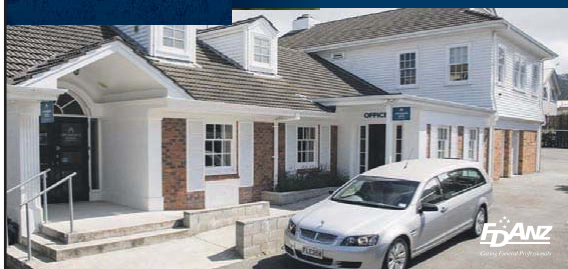
DIGNITY, SENSITIVITY AND THE RESPECT YOUR LOVED ONES DESERVE.

Proud to have served the families of Wellington for over 135 years, we are committed to providing quality, personal service with compassion and integrity. Contact us about pre-planning and pre-payment options.

Wellington: 306 Willis Street Ph 385 0745
Johnsonville: 7 Johnsonville Road Ph 477 6855
Karori: 89 Karori Road Ph 476 6472

LYCHGATE FUNERALS

www.lychgate.co.nz



We Have Moved

Just Blinds

Showroom:
405 Hutt Road, Alicetown, Lower Hutt

BLINDS FOR YOUR HOME AND OFFICE

- Exciting new fabrics
- Wide range of blinds
- Colour consultancy
- Installation - Repairs
- 3 year guarantee

FREE measure and quote

Hours: Mon-Fri 9.00am-4:30pm, Sat 10am-2pm

TRANSFORM YOUR VIEW TODAY

sales@justblinds.co.nz
Ph: 04 472 9920 - www.justblinds.co.nz

SGCNZ

VICTORIA UNIVERSITY OF WELLINGTON
TE HERENGA WAKA

SGCNZ VUW National Shakespeare Festival 2026

Public Scene Performances:

Saturday 30 May 9.30 am-5.30 pm
Sunday 31 May 9.00 am-5.00 pm

SGCNZ YSC Performance, Competition Prize Giving & Scene Awards Presentation

Sunday 31 May 7.00 pm - 9.30 pm

St James Theatre
Courtenay Place, Wellington

Bookings at
Ticketmaster.co.nz

sgcnz.org.nz

RAYE FREEDMAN TRUST

MINISTRY OF EDUCATION
TE TĀHURU O TE MĀTAURANGA

TRINITY COLLEGE LONDON

Absolutely Positively Wellington City Council
We Make It Possible

Arapata wows its visitors



The four bedroom house at Arapata. Photo: Supplied.

Arapata is just 3km from the centre of Havelock North Village.

It is 13ha of open elevated farmland dotted with many species of English trees.

A beautiful, plane tree-lined driveway leading up to three luxury lodges and the original 120-year-old two-storied homestead.

For nearly 100 years the homestead has been hidden from view behind the trees where no one went up the driveway other than the elderly owners.

Since 2007 the lodges have accommodated 100s, and more, of guests coming for birthday parties, wedding parties, conferences, girls and boys weekends, or those just choosing to get away, almost all of which have rated Arapata 10/10.

Many don't want to leave. 100's return again and again.

Arapata Lodge is a reconstructed gardeners' cottage with four bedrooms that can sleep up to nine people.

It is old world, very comfortable, two decks, and has lovely furnishings.

Guests have actually copied the design because they loved it so much.

Ngamoe has four bedrooms and can sleep up to 10 people.

Built in 2018, modern, contemporary, it is a blend of Moroccan bespoke, leather, timber, concrete, large open rooms and beautiful views.

When guests walk in, their first thought is wow. They are always extremely happy.

Tiro is our latest two-bedroom fantasy, sitting amongst the trees. It is a design that has played in my head for some time and now is almost a reality. It will hopefully be ready for the spring.

It has a sense of calm where the world slips away, and I can't wait to share it with you. I challenge you to come and find out for yourselves. www.arapata.co.nz email arapatalodge@gmail.com or phone 027 445 9297 and ask for Ben or Rae.



ARAPATA

BOUTIQUE ACCOMMODATION
HAWKE'S BAY

309 Middle Road
Havelock North, Hawke's Bay

Phone: +64 6 877 5656

Ben Gaddum Mobile: 027 445 9297

Rae Gaddum Mobile: 027 292 6750

Email: info@arapata.co.nz

www.arapata.co.nz



SEASON END PRICE BLITZ



www.100percent.co.nz/johnsonville

Fisher&Paykel
9Kg Series5 Washer

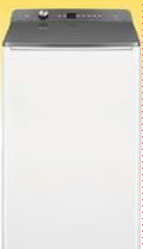
- 21 Wash option Programs
- Flexidose Dispensing System
- Steam Refresh Cycle



\$1479
Latest 5 Star Energy!

Fisher&Paykel
9Kg Topload Washer

- 14 Wash Programs
- UV Sanitise wash option
- Auto Load Auto Water Level Sensing



\$1397
4.5 Star Energy Savings!

BOSCH
8Kg S2 Washer

- 14 Wash Programs
- EcoSilence Drive Technology
- Iron Assist & Steam Cycle



\$1322
Bosch Quality!

Beko
8Kg Heat Pump Dryer

- 15 Drying Programs
- Optisense Control System
- 8 Star Energy Savings



\$999
8 Star Energy Saving

Midea
8Kg Washer

- 15 Wash Programs
- Steam Sanitise Option
- BDL Inverter Motor



\$679
Top Spec, Lowest Price!

Midea
7Kg Vented Dryer

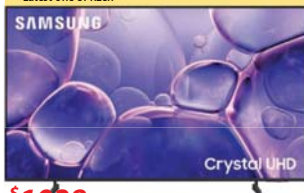
- 4 Drying Programs
- Dryness Level Control



\$399
Best Price Dryer!

SAMSUNG
65" Crystal Series TV

- Exclusive Samsung Tv Channels
- Crystal 4K processor
- Latest One UI Tizen



\$1028
BIG Tv, Small Price!

Mitsubishi
328L Fridge Freezer

- Multi Compartment Cooling
- Exclusive Fruit & Vege Drawer
- Automatic Ice Maker



\$1699
5 Year Warranty!

Haier
309L Fridge Freezer

- Multi-Zone Airflow Cooling
- Bright LED Interior Light
- Electronic Temperature Control



\$1029
4.5 Star Energy Saving!

Fisher&Paykel
15 Place Dishwasher

- 7 Wash Programs Auto Wash Cycle
- End Wash Auto Door Open
- 46dBA Quiet Operation



\$1199
Popular Choice!

Midea
14 Place Dishwasher

- 10 Wash Programs
- Hygiene Care Technology
- Half Load Function



\$639
Limited Stock!

Panasonic
55" OLED TV

- My Smart Home Screen 8.0
- Dolby Vision IQ & Dolby Atmos
- Google Assistance & Alexa



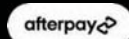
\$1799 Clearance Deal!

We're Local We Care

100% HOME
NEWBOLDS

NEWBOLDS JOHNSONVILLE

6-8 Broderick Road, Johnsonville • 478-4988 • Easy Customer Parking





EXPERTS

Contact our locals for the knowledge they provide

Headstones

Are you paying too much?

BUY DIRECT & SAVE GLOVER MEMORIALS

Second Inscription from \$950.00

New Plaques from \$1300.00

New Headstones from \$2200.00

Permit, Lettering, Artwork, Installation and GST all Included

7 Hartham Pl Sth, Porirua,

Ph: 237-8891

Also at 9A Seaview Rd,
Lower Hutt

www.glovermemorials.co.nz

Headstone specialists since 1911

Tech Support



Home Tech Help

Wellington to Levin & Surrounding Areas

Managed IT services are no longer just for businesses!
Whether you have a complex technology set up or a single computer at home, the IT Helpdesk powered by TechMan can help you better manage your devices.

0800 115 229 | support@techman.nz | www.ithd.nz | www.techman.nz

Advertising

Your Ad Here.

Contact the **Herald** today.
Les Whiteside **E** les@wsn.co.nz

Real Estate

STEVE FEJOS

“Overwhelming knowledge of the property market and commitment.”



Steve Fejos **M** 027 562 1777
E sfej@loweandco.nz

Deloitte **FAST50**

Medium Residential Office of the Year 2018 & 2019 **REINZ** Awards

PART OF THE ANDCo GROUP
ANDCo MEANS MORE

Lowe & Co
REALTY



The botanical illustrated talk that will take place on 26 May. Photo: Supplied.

Women leaders to share their journeys

Women leaders will share their experiences at the Wellington Central Library next week.

Women of diverse journeys: leaders who shape our workplaces will take place from 5:30pm to 6:30pm on Wednesday 27 May at Te Matapihi ki te Ao Nui Central Library. An insightful panel discussion, it will feature female leaders from different cultures who now call Aotearoa home.

In a conversation facilitated by award-winning author, poet and librarian Khadro Mohamed (Somalia), organisational leaders Mumtaz Parker (South Africa), Dr Fahimeh McGregor (Iran), and Juping Zhou (China) will discuss their journeys' across oceans and cultures and into leadership roles in New Zealand workplaces.

They will share experiences and discuss the challenges of taking on leadership positions within organisations and their communities.

Botanical art and illustration: author talk will be held from 5:30pm to 6:30pm on Tuesday 26 May at Te Matapihi ki te Ao Nui Central Library.

The talk will take a deep dive into the history, significant figures and contemporary developments in botanical art and illustration.

It will explore the fascinating and stunning visual pages of *Flora*: celebrating our botanical world and *Groundwork: The Art and Writing of Emily Cumming Harris*, with authors Dr Rebecca Rice and Catherine Field-Dodgson.

Rebecca is Senior Curator Art at Te Papa. She is committed to rethinking the legacies of Aotearoa New Zealand's colonial visual archive.

She brings her historical knowledge to bear when writing on and speaking about modern and contemporary art.

Her current research focuses on 19th-century women botanical artists, the visual culture of the New Zealand Wars, and the impact of impressionism on New Zealand artists at home and abroad.

Rebecca is co-author with Matariki Williams of *Ngā Tai Whakarongorua | Encounters*, awarded AAANZ Best small exhibition catalogue in 2021, and co-editor of *Te Ata*

ō Tu: *The Shadow of Tūmataunga I* The New Zealand Wars Collections of Te Papa, shortlisted for the Ockham New Zealand's Best Illustrated Non-fiction book, 2025.

Catherine (Rongowhakaata, Ngāi Tāmanuhiri, Te Aitanga a Mahaki) is the author of a 2003 Master's thesis that included the first detailed study of Emily Harris's exhibiting practices.

She is active in community and environmental organisations and a beginner learner of te reo Māori.

She is currently researching her great-great-grandmother Keita Halbert/Wyllie/Gannon and her connections to Tūranga.

NZ Youth Week: studio tour and ukulele jam will be held at Waitohi Johnsonville Library on Friday 22 May from 3:30pm to 4:30pm.

Have you ever wondered how a recording studio works?

Enjoy a tour of the equipment and instruments that make up the Tūhura HIVE recording studio.

No appointment is necessary. Come to the HIVE Makerspace and a staff member will show you around.

If you're feeling the music within, pop next door and try out our array of colourful ukuleles with your friends. Song and chord sheets provided.

This studio tour is recommended for people aged from 10 to 16 years.

NZ Music Month: Tiffany Baker plays the harp will take place from 11am to 11:30am on Saturday 23 May at Te Takapū o Patukawenga Tawa (Mervyn Kemp) Library and from 3:30pm to 4pm on Thursday 28 May at Waitohi Johnsonville Library.

Tiffany Baker is an accomplished harpist who performs and teaches throughout the Wellington region.

She will play a variety of pieces on a variety of harps – everything from classical and Celtic to folk and modern.

All events are free and seating is limited. Wellington City Libraries encourages people to arrive early to secure a seat.

Nau mai rā tātou katoa. Everyone is welcome.

New patron for New Players



The President of the New Players Theatre Company, Anne Megget, and the company's new Patron, Ōhariu MP Greg O'Connor, shake hands on 18 May to mark Mr O'Connor becoming the Patron. Photo: Supplied.

The New Players Theatre Company has a new patron – Ōhariu MP Greg O'Connor.

New Players has been part of the northern Wellington community for 50 years, with strong connections across Newlands, Tawa and the surrounding suburbs.

Accessible, community based theatre has created opportunities for people of all ages and backgrounds to take part in the performing arts – whether on stage, behind the scenes or in the audience.

Greg's strong ties to the area, his visible support for community initiatives, and his

appreciation of local identity and connection align closely with what New Players represents.

Last year he even allowed himself to be persuaded to record a voiceover to be used in the production of 'Crazy Ladies'.

This year New Players will present a play written by one of its talented members, Amelia Lucie-Smith.

Called 'Murder and matters more pressing', it is directed by Whitby's Martin Hunt, and will hit the stage at the Linden Community Centre in August.



Whitby Collegiate OPEN DAY Sunday 7 June 11am-1pm



Register at whitbycollegiate.school.nz | 04 234 1070

Keeping it

LOCAL



CONSIDER DOING BUSINESS WITH THE HERALD'S ADVERTISERS - THEY HELP BRING YOU THE STORIES YOU LOVE TO READ

ZAMPELLES

in Johnsonville Mall

Come and experience our revamped lighter brighter cafe - cushioned seating is one of our features!

The same favourites with a few exciting new tastes, and the same friendly service



**OPEN FROM 8AM
9AM SUNDAYS**

Johnsonville Club – Great Food, Great Value & Great Company

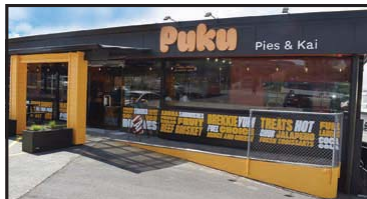
Located at 1 Norman Lane, Vista Café & Bistro at the Johnsonville Club offers affordable, delicious meals in a warm setting. Enjoy roast dinners, lasagne, satay chicken and more, with brunch and lunch served Tuesday to Saturday, including popular eggs benedict.

Vista Café & Bistro aims for affordable, family friendly, delicious meals with a range of dining to suit everyone.

The club is the perfect place to connect, offering activities like golf, darts, poker, dance, snooker and pool.

Housie is a midweek favourite – easy, social and full of laughs. Held first and third Wednesdays, tickets from 7:00pm, eyes down 7:30pm.

The Club has parking but is also close enough to taxis, buses, and the train for a worry-free way home.



**PUKU
PIES &
KAI**

Mon - Fri: 7am to 4pm
Sat - Sun: 8am to 4pm
22 BRODERICK RD
TEL 04 384 6652

In good heart at the Innkeeper

Locals regard the Innkeeper as an ambient and friendly pub setting, where the staff are eager to learn your name, and prepare your favourite drink from their extensive range!

With the autumn still bringing its warmth, now is the time to experience the sunny verandah at the Innkeeper!

The restaurant features hand-cut steaks, roast beef, pork belly, mouth-watering burgers, the best fried chicken, and plenty of kids' meal options.

They specialise in catering for large groups, fundraisers, and birthday parties. Contact them today to organise your next outing!

Enjoy a Guinness, craft beer, or top shelf spirits at a bar leaner or in the lunge-style sitting area.

**To advertise on this page
contact Steve@wsn.co.nz**



Join Now!

Beat the cost-of-living crisis with our affordable member only prices!



Enjoy our facilities and activities including:

- | | | |
|--------------------|---------------|-----------------|
| Bistro | Quizzes | Bowls |
| Membership Draw | Texas Hold'em | TAB |
| Raffles | Venue Hire | Pool/Snooker |
| Live Entertainment | Darts | Family Friendly |



THE GOOD TIMES

**GREAT MEALS,
DRINKS AND SERVICE**



PROUD SPONSORS OF NWFC

Open 7 days

11-13 Broderick Rd, Johnsonville

Ph: 04 478 9753



WE ARE BUYING NOW!

**UNWANTED OR BROKEN GOLD & SILVER
JEWELLERY, COINS, WAR MEDALS,
OLD BANKNOTES AND VINTAGE WATCHES**

DO YOU HAVE ANY OF THE ABOVE?

**GETTING OLDER? NEED TO START GETTING RID OF THINGS?
THEN ASK YOURSELF THESE QUESTIONS...**

- Shouldn't I be selling now at these extremely high gold and silver prices?
- Isn't money better off in my pocket rather than having things sitting around?
- Will the kids or grandchildren really want or appreciate them?
- Shall I give them the items or give them the money instead?
- Will a museum really want them considering how much they already have in storage?
- Will they be secure in an earthquake or other disaster?
- Do I have the expertise or inclination to try and sell them myself on the internet?

YOU KNOW THE ANSWERS - WE WANT TO BUY - SO CASH IN NOW!

JOHN BERTRAND (COLLECTABLES) LIMITED

LEVEL 1, HARCOURT'S BUILDING
215 MAIN ROAD, TAWA
WELLINGTON 5028

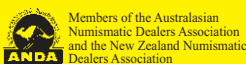
CALLERS BY APPOINTMENT ONLY PLEASE - AMPLE FREE STREET PARKING
Please bring suitable photo ID and bank account details

Tel: 04 232 9832 Or email: info@bertrand.co.nz



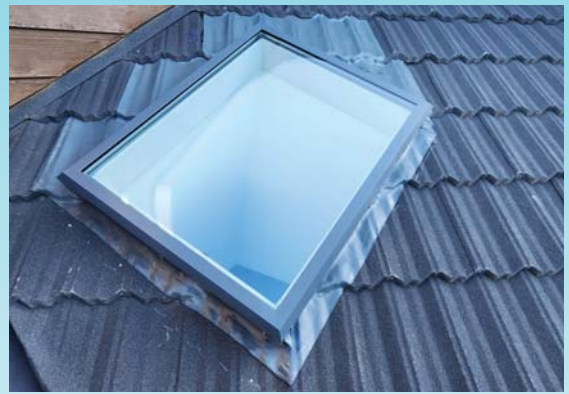
JOHN BERTRAND™
COLLECTABLES LTD

John Bertrand - The Trusted name in Numismatics Since 1965



Members of the Australasian
Numismatic Dealers Association
and the New Zealand Numismatic
Dealers Association





SKYLIGHT SPECIALISTS

New Zealand made for New Zealand Conditions



Phone : 0800 85 86 87, 04 938 0721 or 027 595 4448 | Email : info@nzskylight.nz
 Government Approved Licensed Building and Roofing Practitioner - LBP | www.skylightspecialists.co.nz

And there was LIGHT!

Skylight Specialists have been specialising in skylights for 25+ years. We have yet to come across a brand/make/type or configuration of skylight that we do not know everything about.

Skylight Specialists is LBP (Government approved licensed building and roofing practitioners), with 30+ years in the building industry and employ a highly skilled team which consists of trade qualified glaziers, roofers and builders.

When we come and assess your skylight/s we will provide you with a free, no

obligation quotation. We will also provide you with a detailed report including photos that will include our findings and recommendations whether it be for general maintenance, repairs or replacement.

At this time of year everyone is concerned about insulation of their homes, trying to keep warm and retain heat. Unfortunately, skylights are often overlooked, even when they can be sometimes the main factor of heat loss. Older skylights are sometimes full-time venting without the homeowner even being aware of this, which is no

different from leaving a window open 24/7. Others are only single glazed or just plastic. By upgrading to double glazing you can retain up to 70% more of your heat. A lot of skylights we come across is simply a piece of glass glued to the roof structure of your home – This is by far inadequate for many reasons including thermal properties and condensation issues, as the moisture has no where to go but get absorbed by the structure of your home. We will assess the entire skylight including the flashings (roof flashings

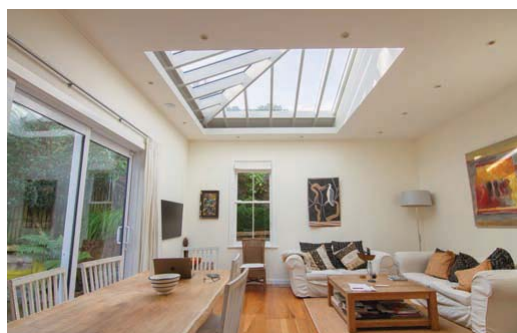
are what connects the skylight to your roof and keeps all watertight). This will cover if you have adequate condensation channels, drainage, seals, condition of flashings, thermal properties and of course longevity of the skylight/s and the surrounding areas.

■ So if you'd like to add A LOT more light into your home and want the job done well, contact them on 0800 85 86 87, 04 938 0721 or 027 595 4448.

"We are tradespeople not sales people"

Services we provide :

- Free quotes and reports
- Servicing all leading brands
- Repairs/replacements and maintenance
- Repair and Replacement roofing
- Full installation service
- Standard sized skylights
- Custom make to any size/shape required
- Low Pitch Skylights
- All fixed and opening options available
- Roof Access hatches



So much to do in

KAPITI ★



The Kāpiti Coast – from galleries to beaches to retail destinations

The Kapiti Coast is a great part of Wellington, and so easy to get to. The streets are quieter, and the experience becomes less about rushing between stores and more about discovering what's there. A morning trip up the coast turns into something slower, a coffee, a wander, a few unexpected finds along the way.



One of the exhibitions on display at Mahara Gallery

In Paekākāriki, The Wobbly Pot sets the tone. Colourful, creative, and a little unexpected, it's part gallery, part café, the kind of place that invites you to linger. Not far along, Love Stomp Coffee & Flowers pairs great coffee with fresh blooms, creating a space that feels thoughtful without trying too hard.

Head further north and you'll start to feel the rhythm of the coast settle in. Toi Mahara Gallery offers a moment to slow down, light-filled, quietly striking, and grounded in the stories of local and national artists. Nearby, NZ Native Oils brings the landscape into everyday rituals, with products crafted from native botanicals.

In Paraparaumu Beach and Waikanae, a collection of independent boutiques gives Kāpiti its own distinct retail edge. Artel Gallery showcases evolving art and design,

while Hendrix Lifestyle Store offers a curated mix of homewares and lifestyle pieces that feel modern, considered, and far from mass-produced.

For fashion, Milk + Ginger and Paperdoll bring a more personal approach, the kind of places where you're guided, not sold to, and where the right piece tends to find you.

And at The Wilderness, it all comes back to the coast. Natural textures, earthy tones, and pieces that reflect the environment you're in, relaxed, thoughtful, and quietly confident.

That's what makes Kāpiti's shopping scene worth the trip. It's not about scale, it's about feel. You're not moving from one big-name store to the next, you're wandering, discovering, and letting the day unfold.

Because here, shopping isn't just about what you take home.

Violin and Piano Duo for June Waikanae Concert

The Waikanae Music Society is looking forward to welcoming back Auckland duo James Jin and Xing Wang whose 2025 concert was so popular.

With a similar programme format to last year, they will play violin sonatas by Beethoven (Op 12, No 1) and Mozart (K304), followed by some charming arrangements of Chinese folk-songs – Guoquan Li's "Fisherman's Song" and "Joy of Spring"



by Juan Mao. The most substantial work on the programme will be Grieg's Violin Sonata No 3, the best known and most dramatic of the Norwegian composer's three violin sonatas.

The concert, in the Waikanae Memorial Hall, will be at 2.30pm on Sunday 7 June. Door sales will be available, or for more information visit www.waikanaemusic.org.nz

Jenny Turnbull potter and ceramicist

Jenny Turnbull is part of a group of potters who are interested in reduction atmospheric firings of salt and soda, using different clays and glazes to achieve interesting surface effects, on porcelain and stoneware.

Each piece is individual, not repeatable, making them one-off pieces of ceramic art. Also available is gas fired porcelain domestic ware, framed lithography printed tiles and travel cups and gift boxed pottery – ideal for that very special gift.



Jennifer Turnbull: Jailhouse Pottery

Hand-made domestic and decorative pottery

Phone: 021 2957 473
3 Iiti Street, Otaki

JENNIFER TURNBULL

- Restaurant
- Craft Beers
- Accommodation

Live Music 4–6pm
next session this 31 May



finnis
PAEKAKARIKI

Right next to Paekakariki Station!
2 Beach Road, Paekakariki
Phone: 04 292 8081
OPEN TUESDAY–SUNDAY 10AM–9PM



JAMES JIN – VIOLIN XING WANG – PIANO

*Violin Sonatas by Beethoven and Mozart
Chinese Folk-Songs
Grieg: Sonata No 3*

Sunday 7 June, 2.30pm
Waikanae Memorial Hall

Public \$50, Members \$40 and Students \$10.
Door sales available or tickets from:
Waikanae New World or
Moby Dickens Books (Paraparaumu Beach)
Phone 04 905 6070
www.waikanaemusic.org.nz

BRENT RUSSELL KILN SERVICES



A Complete kiln support service. From design and installation, to repairs and rebuilding of fibre and brick/metal work, to control systems, support and advice.

Over 30 years' experience in Wellington Nationwide by arrangement

Ph: 04 9050729 Cell: 027 664 9280
email: houscene@gmail.com



Wellington's destination for yarn and wool products

Kapiti Knitting and Lotto is a lovely shop down Sunny Paraparaumu Beach. We have something for everyone. Wool, Haberdashery, Giftware, New Zealand souvenirs and Lotto.

Open Monday to Saturday

24 Maclean Street, Paraparaumu Beach | Phone 04 902 5455

Kapiti Kiln Services

Kiln Services in Nikau Valley have spent over 30 years maintaining and installing kilns. Brent Russell from Kiln Services said "I am seeing resurgence in the craft after

the hit it took from cheap imports". "People now appreciate well-made craft pottery, and schools see the benefits of clay work for pupils.



Paparangi School

Located in the hills of Paparangi, Paparangi School is growing Adventurous Learners. The school's iGROW values underpin learning programmes with Integrity, Grit, Respect, Others and Wonder explored, modelled and encouraged at every year level. The classrooms are busy, collaborative spaces where you'll see students discussing maths problems, a quiet corner for reading, children expressing themselves through art and creative writing and spaces for crafting and creating. The school takes full advantage of its outdoor environment, integrating Enviro-Education into student learning - with students tending to the school gardens, running the recycling programme or making huts in the Adventure Zone.

Enrolments:

Out-of-zone applications for Term 4 close Friday 7 August. School tours on Thursday mornings.

New Entrant Parent Evenings for prospective families:

18 August and 10 November at 6pm.

For more information contact the school office on 04 478 6617.

RĀROA NORMAL INTERMEDIATE SCHOOL TE KURA WAENGA O RĀROA

EXPERIENCE THE VERY BEST OF EDUCATION FOR THE MIDDLE YEARS



Information Evenings 6-7pm (3rd & 4th August)

Open Days 9-10.30am (4th & 5th August)

- ✔ Quality learning environment: Strong teaching and a balanced curriculum that prepares students for education beyond the intermediate years
- ✔ Wide range of opportunities: Access to sports, arts, and leadership activities that build confidence and skills
- ✔ Supportive community: Encourages wellbeing, independence, and positive relationships among students

ENROL FOR 2027

www.raroa.school.nz

Education 2026

Onslow College

Onslow College prides itself on providing an exceptional educational environment, where every student is empowered to achieve their full potential and grow into confident, and valued members of Aotearoa. Our school is built upon a set of values that are the foundation of everything we do: Manaakitanga, Pursuing Growth, Whanaungatanga, Valuing Diversity and Kaitiakitanga.

Our students continue to achieve incredible results; for the last four years we have been in the top five state co-ed schools in the country

for University Entrance attainment, in 2024 we were the number one school.

"Onslow College is a school where you can be yourself in an environment that will challenge and care for you in equal measure." - Jono Wyeth, Tumuaki/ Principal

We welcome enrolments and inquiries: info@onslow.school.nz onslow.school.nz

The Onslow College Open Evening is on Wednesday June 3rd, 5.30-7.30pm we look forward to seeing you there.



Te Kāreti o Onslow Open Evening 2026

Wednesday 3rd June | 5:30 - 7:30 pm



Onslow College

www.onslow.school.nz



Experience MARSDEN

Primary : Year 7 : Year 9
10 JUNE : 17 JUNE : 24 JUNE

Spend the day with us!

Learn more about studying at Marsden in 2027 at our information evening on 3 June:
Year 7: 5.30pm | Year 9: 6.30pm



marsden.school.nz/register
Girls Years 1-13, Co-ed Preschool

Marsden Inspiring Girls



Cr Chung relinquishes chair

Councillor Ray Chung has stepped down as chair of Wellington City Council's Ngā Toki Whakahaere – Council Controlled Organisations (CCO) Review and Appointments Subcommittee, and is no longer a member of that subcommittee.

Mayor Andrew Little has appointed Councillor Rebecca Matthews to chair the committee following Cr Chung's resignation.

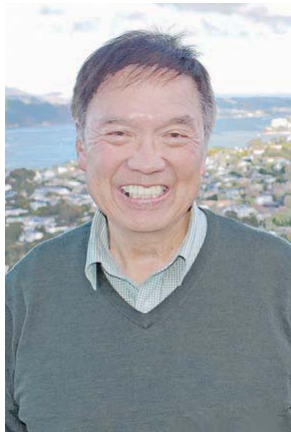
"I'm looking forward to the work of chairing the CCO Review subcommittee," Wharangi/Onslow-Western Ward and incoming chair Cr Matthews says.

"The subcommittee does important work ensuring council council-controlled organisations deliver for residents and users.

"From the zoo, to the cable car, to Zealandia and more, our council-controlled organisations are part of what makes Pōneke Wellington wonderful.

"I'm committed to the subcommittee working effectively together, so oversight is strengthened through the perspectives of every committee member," Cr Matthews says.

Cr Matthews began her work as the committee's chair at the 20 April meeting, alongside deputy chair Tony Randle.



Cr Ray Chung. Photo: Frank Neill.



Rebecca Matthews. Photo: Frank Neill.

Cr Matthews was first re-elected to represent the Wharangi/Onslow Ward in 2019, and was re-elected in 2022. Both times she stood as a Labour Party candidate.

However she made a switch for the 2025 election, becoming a Green party candidate.

Her passion is housing and creating a liveable, affordable city for all.

Prior to being a Councillor, Rebecca worked in the trade union movement and NGO sector in campaigning, communications and

policy roles.

"I have decided to stand down from this subcommittee to focus my attention on constituents within my ward," Wharangi/Onslow-Western Ward Councillor Ray Chung says.

Cr Chung was first elected to the council in the 2022 local body elections, representing the Wharangi/Onslow-Western Ward.

His entry into the political arena had its genesis when he and three other civic minded residents got together and set up the Onslow

Residents' Community Association (ORCA).

At the time there was no residents' association in the Khandallah and Broadmeadows area, unlike the

surrounding suburbs of Ngaio and Johnsonville.

ORCA has been active since November 2017 and Cr Chung is a member of its committee.

La Cloche Café celebrating 20 years

For the past 20 years La Cloche Café has proudly served Wellington with consistent quality in coffee, French cuisine, and warm hospitality, quickly becoming a destination café in Kaiwharawhara.

Convenient parking is available at Spotlight, and with the opening of the new cycle lane to Petone, La Cloche has become a favourite stop for cyclists enjoying a well-earned coffee and Danish.

Today, with four thriving outlets – La Cloche Central, La Cloche Terrace, and La Cloche Aitken with of course La Cloche Kai – alongside an exceptional catering

service for all occasions, the business continues to grow from strength to strength.

Every visit to La Cloche Café is a celebration of joie de vivre.

The café is passionate about offering the best in French cuisine, exquisite patisseries, catering and its unique coffee blend all in a relaxing atmosphere.

"Follow our daily adventures on Instagram and celebrate this special milestone with us," La Cloche Director Francois Febvre says.

"As a proud and loyal Wellingtonian, we are deeply grateful for the community's support and look forward to the next 20 years."



NEWS TIPS

Send your tips to herald@wsn.co.nz

LOCAL TRADES

TRUST A LOCAL

Try the Independent Herald - we get results!

Phone BRENDA today on 021 640 152 or email brenda@wsn.co.nz

BUILDERS

BUILDER

LBP
Qualified for:
Alterations,
Additions
Refurbishment,
Repairs

Ph Allan Johnstone:
973 1239
027 450 3239

BUILDERS

- Professional • reliable
- high-quality work
- licensed building practitioners

Our services include home renovations, alterations, kitchens, bathrooms, maintenance and repairs. No job is too small.

Ph: 04 390 1351
www.citybuilders.co.nz

ADVERTISING

TO ADVERTISE ON THIS PAGE CONTACT BRENDA NOW

BRENDA Sales
M: 021 640 152
E: brenda@wsn.co.nz

CARPET & VINYL

David & Maria's

CARPET & VINYL

SALE NOW ON

For A No Obligation FREE MEASURE & QUOTE

7 Strathmore Ave, Strathmore Park, Wellington
Ph: (04) 388 7969
E: dmcarpets@gmail.com

PLUMBING

CRAFTSMAN PLUMBER

Certified Plumber and Drainlayer
Graham Plumbing & Drainage Ltd

Plumbing, Drainlaying, Roofing and Spouting, Blocked drains, Burst pipes, Repairs and Leaks, Black Dux Qest pipe replacement, Maintenance, Kitchens, Bathrooms, Replacing hot water cylinders.

Phone 027 4574 999 or 970 2409
Email: jokagraham3@gmail.com

PAINTER

Graham's Painters

Exterior / Interior
Experienced tradesmen and large team

Autumn is here!!!

Now is the time to get your House Exterior painted

Available for Interior work too.

~ Pensioner Discounts ~

Email: grahampaintersnz@gmail.com
www.grahampainters.nz
Ph (04) 564 9202 or 021 183 9492

EXTERIOR PLASTERING & PAINTING

Good exterior plasterers and painters are hard to find, contact us on

021 028 19368
or visit
www.rendermates.co.nz
for a free quote

E: info@rendermates.co.nz

RUBBISH

RUBBISH & GREEN WASTE REMOVAL

Whiteware, appliances, furniture & recyclables
Free quotations
Ph Sam on

021 0252 7361
Samsrubbishnz@gmail.com No job too small!!

BLOCKED DRAINS

Double D'z Drainage

"Great communication for work completed with replacing our guttering, & drainage for a new soak pit. Very satisfied with the work completed thanks."
-Robert

- Drain Re-Laying
- Drain Maintenance & Repairs
- Blocked Drains
- CCTV Inspection
- Soak Pits
- New Builds

Call Now 027 844 6899 | www.doubledzdrainage.com

WHAT'S ON...

The Community Noticeboard is for non-profit organisations. For \$15.00 you can publish up to 25 words.

No AGMS, sporting notices or special meetings. Community Notices must be pre-paid.

phone (04) 587 1660 or email classifieds@wsn.co.nz

Feedback on transport being sought

Wellington City Council and Metlink are asking the community for feedback on two key projects aimed at supporting the increasing passenger demand and improving the efficiency of Wellington's wider transport network.

The proposals include a second city centre bus route along Harbour Quays, connecting Wellington Railway Station with Courtenay Place via Whitmore Street, Customhouse Quay, Jervois Quay, Cable Street, Wakefield Street, Kent Terrace and Cambridge Terrace.

The proposed route would include new bus stops at key destinations and peak-time bus lanes operating on sections of Customhouse and Jervois Quays, and Wakefield and Cable Streets between 6:30am and 9:30am, and 3:30pm and 6:30pm, Monday to Friday.

The improvements are intended to help relieve congestion on the Golden Mile bus corridor, including Courtenay Place, Manners Street, Willis Street and Lambton Quay, while improving bus reliability and travel times across the city.

Consultation is also under way on proposed upgrades along the Eastern Bus Corridor between Miramar and the central city.

The proposed changes include improvements to bus stops and intersections designed to

improve safety, accessibility, and journey reliability for passengers travelling between Wellington's eastern suburbs and the city centre.

The upgrades would allow more than one standard bus, or a longer bus, to safely use bus stops at the same time, helping support more consistent travel times as passenger demand grows.

Community feedback will play an important role in shaping the final proposals before they are considered by Council committees.

If approved, the changes are expected to be delivered in stages from early 2027, with buses anticipated to be operating along the Harbour Quays route and upgrades completed on the Eastern Bus Corridor by late 2027.

As part of the consultation, Wellingtonians are invited to attend a series of drop-in sessions to speak with the project team, view plans, ask questions, and share feedback in person.

Staff will also be available to help people make submissions.

The community drop-in sessions are:
 • Saturday 23 May, 10am to 11:30am at the Miramar Library;
 • Tuesday 26 May, 11am to 1pm at Te Matapihi ki te Ao Nui (ground floor,



Two buses in Wellington city. Photo: Metlink.

- near the Manaaki desk);
- Thursday 28 May, 3:30pm to 5:30pm at Clyde Quay School Hall;
- Tuesday 2 June, 5pm to 7pm at the Hataitai Community House Community Room;
- Wednesday 3 June, 5pm to 7pm at the Miramar and Maupuia Community Centre Hall; and
- Saturday 6 June, 11am to 1pm at Te Matapihi ki te Ao Nui (ground floor, near the Manaaki desk).

Consultation is open now and closes at 5pm on Sunday 14 June.

People can find out more, view plans and supporting documents, and make a submission online at transportprojects.org.nz/bus

Feedback can also be provided by emailing citydesignprojects@wcc.govt.nz,

People can request a paper feedback form by calling Wellington City Council on 04 499 4444.

Independent Herald
 Our community. Our stories. Our voice.
 Follow us on Facebook
www.facebook.com/IndependentHerald

Public Notice

BELLEVUE SCHOOL
 Inspiring Learning, Empowering Learners

Enrolment at Bellevue School is governed by an enrolment scheme, details of which are available from our website: www.bellevue-newlands.school.nz.

The board has determined that up to five (5) places are likely to be available for out of zone students for the fourth enrolment period in 2026 (**Saturday 26 September 2026 to Wednesday 16 December 2026**). The exact number of places will depend on the number of applications received from students who live within the school's home zone. For students seeking enrolment within the fourth enrolment period of 2026, the deadline for receipt of applications for out of zone places is **9am, Friday 26 June 2026**.

If the number of out of zone applications exceeds the number of places available, students will be selected by ballot. If a ballot for out of zone places is required, this will be held on Friday 26 June 2026. Parents will be informed of the outcome of the ballot within three school days of the ballot being held. Details of how applications from out of zone students are processed are available on the school website.

Parents of students who live within the home zone and intend enrolling their child at any time during the next year should notify the school by as soon as possible to assist the school to plan appropriately for next year. Students who live in the home zone are entitled to enrol at the school.

Enrolment packs are available online at www.bellevue-newlands.school.nz.

Funeral Directors

We make a difficult time a little easier

Share your funeral wishes with Eva at The Wilson Funeral Home

Karori
 142 Karori Road
 (by appointment only)
 04 476 5292

Newtown
 375 Adelaide Road
 04 389 6069

THE Wilson FUNERAL HOME

Eva Rippon: eva@twfh.co.nz | twfh.co.nz

Guardian Funeral Home

Supporting you gently through life's hardest moments.

Johnsonville
 4 Moorefield Road
 04 477 4025

Tawa
 157 Main Road
 04 232 1588
 Open by appointment only

www.gfh.co.nz

View the *Independent Herald* online
www.independentherald.co.nz

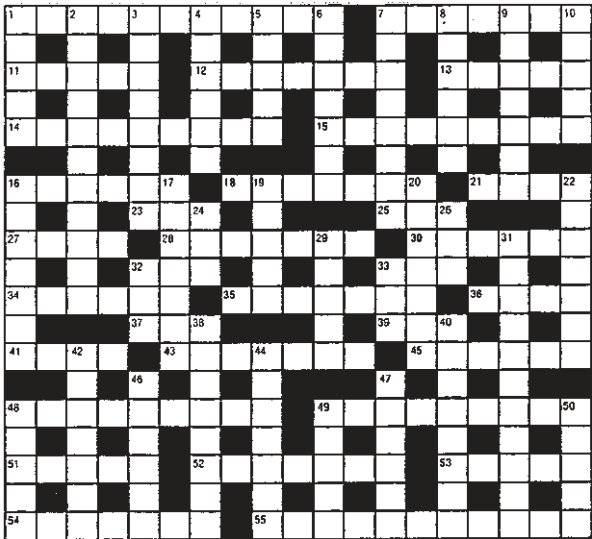
Trades & Services

Graham's Painters

Get your House Exterior and Interior painted!
 Experienced tradesmen and large team
 ~ Pensioner Discounts ~
 E: grahampaintersnz@gmail.com
 W: www.grahampainters.nz
 Ph: (04) 564 9202
 021 183 9492

Buy LOCAL Support LOCAL Invest in your community!

CROSSWORD Puzzle



- ACROSS**
- Trivial (11)
 - Weakly sentimental (7)
 - Small candle (5)
 - & 14 ACROSS Confused (2,5,3,6)
 - Its capital is Katmandu (5)
 - SEE 12 ACROSS.
 - Spacious (9)
 - Nearly (6)
 - Animal of the weasel family (7)
 - Small island (4)
 - Consume (3)
 - Short sleep (3)
 - Colour (4)
 - In sight (7)
 - Barrel maker (6)
 - Look (3)
 - Snow runner (3)
 - Closer (6)
 - Some (7)
 - Ballad (4)
 - Insect (3)
 - Garland (3)
 - Whirl (4)
 - Ungenerous (7)
 - Traps (6)
 - Funds official (9)
 - Advocate (9)
- DOWN**
- Extreme (5)
 - Baggage (11)
 - Obstinately wrong (8)
 - Harvested (6)
 - Donkeys (5)
 - Character (7)
 - Band member (8)
 - Sift (6)
 - Hinders (7)
 - Punctured (5)
 - Frequents (7)
 - Inns (7)
 - Think (5)
 - Grapples with (7)
 - Angers (7)
 - Bind (3)
 - Maori dance prop (3)
 - Looks slyly at (5)
 - Deed holders (11)
 - Ocean (3)
 - Large Indian tree (3)

- Dreadful (8)
- Very quickly (2,2,4)
- Repeat (7)
- Zeal (7)
- Rise (6)
- Wakens (6)
- Hauls (5)
- Preen (5)
- Chores (5)

Solution
 Last Week: 14 May 2026

B	R	I	T	T	L	E	N	E	S	E	X	T	R	T	S
A	N	E	N	N	H	V	I	O	L						
S	W	O	O	N	D	I	S	P	O	S	E	D	O	U	S
I	P	D	E	E	U	W	N	I	L	E					
C	R	E	N	E	L	A	T	E							
S	E	A	M	E	N										
R	R	R													
S	E	A	M	E	N										
E	T	D	A	B	N										
R	A	I	L	R	E	N	D	E	R	S					
V	V	O	R	E	E	A	A	C	E	X	L				
A	G	E	N	D	A										
N	E	T	C												
T	U	C	K												
U	B	R	U												
H	E	R	C	U	L	E	A	N							
A	I	R	E	L	L	S	A	I	E						
S	C	O	R	N	E	A	R	E	S	T					
T	U	E	E	M	N	O	I	U	M						
E	N	S	U	R	E	D									
P	H	A	R	M	A	C	I	S	T	S					

Waterside Karori earns a vital point

By Hamish Wareham

After seven rounds of the 2026 men's central league competition, three points were all that Fusion5 Waterside Karori had to show for their efforts.

As well they conceded 11 goals in their past two fixtures against Miramar and Napier.

Many would have been forgiven for possibly expecting a result of similar sorts this past weekend when they hosted a strong Western Suburbs outfit in the midst of a four game winning run and back to back clean sheets.

It took just five minutes, however, for Karori to abolish Western Suburbs run of two games without conceding a goal when Tomas Alvarado unmarked in the box received a cutback and finished into the bottom right corner past a sprawling Wests goalkeeper Quillan Roberts.

Suburbs equalised from the penalty spot in the 20th minute, before just six minutes later Tu Reedy-Dunn headed a corner into the bottom right corner giving Wharfies a 2-1 buffer heading into the half time break.

Second half substitute Cam

Mackenzie would rescue a point for Wests with a goal in the 73rd minute, but nonetheless a vital point gained for Waterside Karori as they welcome five in a row Central League champions Wellington Olympic this Saturday 23 May at Karori Park with the kickoff at 2:30 PM.

Unfortunately for Waterside Karori's table topping women's central league a side, a week off with a bye in round one of the Kate Sheppard Cup didn't bring happy returns on Sunday 17 May as they were beaten 2-0 by Palmerston North United, dropping them down to second on

the table ahead of a home game this week at 12:30 against Phoenix Under 18s.

For TFS North Wellington a home game beckoned against Palmerston North Marist in round seven of Central League two, Marist' having won just their second game of the season a week prior over Lower Hutt 1-0.

Darren Juru scoring twice in the 5th and 15th minute against the side he spent the year prior playing for gave the visitors a handy 2-0 lead that they held until the 68th minute when Benji McMillan scored his third goal of the season to set up a

fiery last half an hour.

An equalizing goal wouldn't come, though, and North Wellington slumped to ninth on the table, boasting just two wins from seven games.

They are now sitting just three points above current wooden spooners Douglas Villa.

A trip over the hill beckons to face Wainuiomata this Saturday, 23 May, at 2:30pm, still in search of a maiden league away win in 2026 and a chance to move up the table.

They will be doing battle with a team that sits two places above them on the table.



The Johnsonville triples (from left) Wayne Coleman, Phil Todd and Brendon Gibson. Photo: Supplied.

Three titles for J'ville bowlers

By Frank Neill

Johnsonville bowlers shone at Bowls Wellington's finals weekend, coming away with three titles.

Terry Dean won the men's singles title, defeating Lyall Bay's Brian McDermott on 16 May.

Phil Todd and Wayne Coleman played two solid games to win the pairs on 16 May.

Phil and Wayne beat the highly regarded Ben King and Ian McLeod in the final.

They were then joined by Brendon Gibson in the triples event on 17 May and chalked up two excellent victories to win the triples.

Logan Amer came very close to adding a fourth title when he was very narrowly beaten by the highly regarded Naenae bowler Neville Rodda.

Neville, who had beaten Finbar McGuigan in the semifinal went on to win 21-20.

To reach the final Logan had defeated Karori's Nigel Burn.

Going into the weekend, the Johnsonville



Brian McDermott (left) and Johnsonville's Terry Dean, holding the cup he won in the singles. Photo: Supplied.

Bowling Club was represented in the final of the junior singles and the semi-finals of the singles, pairs and triples.

A very unusual feature of the weekend was that none of the club's women bowlers were competing.

Promising start by J'ville Hawks

By Frank Neill

It looked promising at half time for the Johnsonville Premier Rugby team in their match against the table topping Tawa on 16 May.

The Johnsonville Hawks led Tawa, who are currently at the top of the Swindale Shield table, 24-22 at the break.

However the Hawks were not able to add to their score in the second spell of the match, played at Lyndhurst Park, while Tawa added

19 points.

This gave Tawa the victory 41-24 and with it the Carman Cup, played for between the two clubs' Premier teams.

The Hawks wing Finlay Sharp scored two tries during his good performance for the team.

Ngahau Tepaa and Josh Timu also scored tries and Kayd Parata kicked two conversions. The Johnsonville Hawks next match is against the Upper Hutt Rams at Helston Park on 23 May, with a 2:45pm kick off.

Wrights Hill Fortress open day



The replica of the gun barrel at Wrights Hill Fortress. Photo: Supplied.

Wellington's historic Wrights Hill Fortress in Karori will be opening for public inspection again on King's Birthday, Monday 1 June.

The World War Two coastal battery first opened to the public in 1989 and will be accessible between 10am and 4pm.

On King's Birthday people are invited to self-guide themselves through the tunnels and gun emplacements.

The walk usually takes about one hour, so bring a torch with you for some fun. Stout footwear is also advised.

Visitors will be able to explore the 620 metres of underground tunnels with a free map and history pamphlet.

They will see the engine room, shell stores, plotting rooms and the huge gun pit where Gun Number 1 used to stand, as well as a replica of the 10-metre-long gun barrel.

Also on show will be historic photos, and military living history displays from World War Two and the Vietnam period. A DVD of

how a 9.2-inch gun operates will be showing as well.

The World War Two Fortress is the only one of its type in New Zealand available to the public on five open days a year.

Wrights Hill Fortress was built from 1942 to protect Wellington from Japanese bombardment. In the early 1960s, the guns were cut up for scrap and sold, ironically, to the Japanese.

Admission is cash only: \$20 for a family of two adults and three children under 15, or \$10 per adult and \$5 per child.

Access is via Karori Road, Campbell Street, and Wrights Hill Road. There is limited car parking at the summit of the Hill. Please park sensibly. Use walking tracks.

All proceeds go to the continuing restoration of the Fortress.

Visitors can also enjoy picnic sites and panoramic views from the top of the hill. There will be a BBQ sausage sizzle and soft drinks on sale.



NEWS TIPS

Send your tips to herald@wsn.co.nz

Buying Now



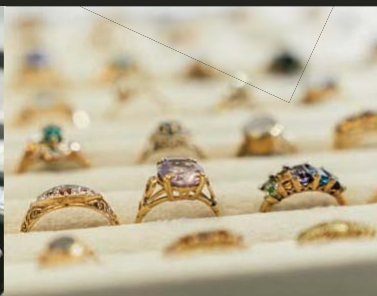
All Gold Jewellery

Coin and Banknote
Collections and accumulations

Antique, Estate,
and Modern Jewellery

Silver and Gold Bullion

All Vintage and Old Watches



Are you moving, downsizing, or worried about security?

No longer collecting? Family not interested?

Would the money be more useful to you?

**Please come and see us in our permanent store for an
“on the spot” appraisal and offer.**

Visit Us

Heritage Gold
Imperial Park, Unit 81,
41 Bouverie Street,
Petone, Lower Hutt.
Next to Gilmours & Mitre 10.

Phone +64 21 074 9410

Email Hannah@heritagegold.nz

Web www.heritagegold.nz

Store Open Hours

Mon - Fri: 9:30am - 2:30pm

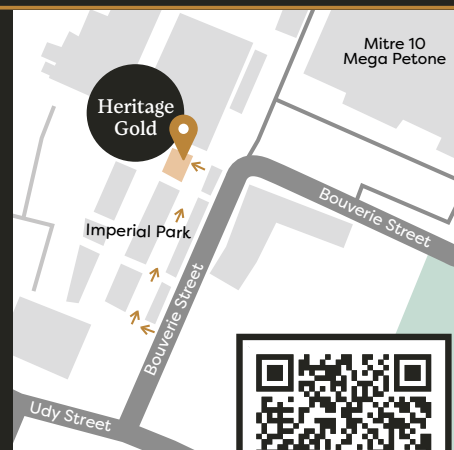
Thursday: 9:30am - 4pm

No appointment necessary.

**ALWAYS
BUYING
AND
SELLING**

Heritage Gold

Family owned, Fourth generation, Fully licenced



Scan the QR code
for directions to
our store.

