



# THE TOWN CRIER



Vol. 32, Issue 10, Friday, August 15, 2025-150<sup>th</sup> Assembly Season

## 2025 CROP Walk Raises \$28K Against Hunger

On June 28th, 120 walkers and volunteers came out for the 21st Annual Little Traverse CROP Hunger Walk held on the Bay View campus, and there were even a greater number of donors who gave online or to one of the walkers. The Pat Sehr Memorial Team raised \$5,991, the Bay View Flats team raised \$635, and the Bay View Members and Friends Team raised \$8,899. Altogether, \$28,020 was raised for efforts to alleviate hunger in Bay View's local community and around the world. Walkers and donors from outside Bay View contributed 42% of this total, with fundraising teams from Brother Dan's Food Pantry of St. Francis Xavier Church, First Presbyterian Church of Harbor Springs, Emmet County Democrats, Epsilon Community Church, Emmanuel Episcopal Church, First Presbyterian Church of Petoskey, and Christ the King Lutheran Church, as well as \$4,505 in donations from business and organizational sponsors. The funds raised have been forwarded to Church World Service to support their efforts to promote food self-sufficiency among people around the world and one quarter of the funds will be returned as a grant to Manna Food Project, a local food bank working to alleviate hunger among children and adults in Emmet, Charlevoix and Antrim Counties.



## Take Home a Piece of the Jubilee

As our unforgettable 150th Jubilee season draws to a close, the colorful banners that have lined our streets and welcomed thousands to Bay View will soon be coming down. These banners have been a joyful symbol of our celebration—and now, you can take one home as a keepsake of this milestone year.

Banners are available for purchase for \$50 each. To reserve yours, please call the Front Desk at (231) 347-6225.

Capture a piece of Bay View history and let the spirit of the Jubilee live on at your home or cottage for years to come.



## From the Executive Director, Megan DeWindt



### Bay View's 150th Assembly Season Close

Whether you've been with us all summer or joined us for just a few treasured days, I'm so glad you're here—and so grateful you're part of this remarkable Bay View family.

As I reflect on our 150th Jubilee season, I can't help but feel both joy and a touch of wistfulness. The weeks have passed far too quickly, but what a season it has been—filled with inspiration, beauty, and connection in abundance. Together, we celebrated 150 years of Bay View's mission—enriching lives through education, performing arts, recreation and worship. We honored our past with gratitude and stepped boldly toward our future with confidence and hope.

This summer brought so many unforgettable moments:

- Hosting our **Jubilee Fun Run**, where nearly 180 individuals and families came together for an energetic, joy-filled morning of movement, family, and celebration.
- Bringing the powerful story of ***Ragtime the Musical*** to life, with its extraordinary music and message drawing more than 700 people to each performance.
- Filling Hall Auditorium for a sold-out evening with **Dr. Temple Grandin**, whose wisdom and compassion touched every heart in the room.
- Gathering in the golden light for

a drum circle that opened **Dr. Robin Wall Kimmerer's** profound talk on caring for the sacred land we share.

- **Welcoming our first-ever season sponsor, Munson Healthcare**, a true partner in celebrating wellness and community.
- **Building meaningful partnerships with more than 20 organizations** across Northern Michigan, extending the reach of our mission and the gift of Chautauqua to thousands who had never experienced it before.

As part of our Assembly day celebration, we were honored to receive distinguished recognitions marking our historic milestone, including a formal tribute entered into the U.S. House of Representatives record, a Certificate of Appreciation from the National Park Service honoring our National Historic Landmark status, and a U.S. flag flown over the Capitol in our honor and proudly displayed above Hall Auditorium, each a testament to our rich legacy and enduring impact on our community and nation.

We have stood from a place of abundance—sharing what we have with generosity and pride. That spirit is woven into Bay View's very fabric, and I hope it will continue to guide us in the years ahead. We've watched children grow, adults discover new passions, and neighbors become friends. Through it all, music, laughter, and learning have bound us together.

To our artists, faculty, staff, donors, volunteers, and every person who took part in this milestone season—thank you. You are the heart of Bay View.

As we turn toward the future,

may we carry forward the joy, the friendships, and the shared purpose that defined this Jubilee year. My hope is that we keep standing in abundance—welcoming, sharing, and inspiring—so that generations yet to come may find what we have found here: a place where life is richer because we live it together.

Thank you for making this season extraordinary. I'm already looking forward to what we will create—side by side—in the seasons to come.



## From the Education Director, Julia Healy

### Post-Season Classes, August 18-27

- Ballet: Tuesdays and Fridays, 8:30 a.m. in Loud Hall
- European Pastries/Blackforest Torte: 8/19, 1 p.m. in Loud Hall
- C.S. Lewis: 8/21, 11 a.m. at the Bay View Library
- Cooking the Odawa Way: 8/26, 1 p.m. in Loud Hall
- Low-Sugar Jam Session: 8/27, 1 p.m. in Loud Hall

Register for post-season classes at:  
<https://bayview.asapconnected.com/#CourseGroupID=8639>

### Monday Night Movies to Continue Until October 6th

Bay View's 150th Assembly Season might be over, but the thrill of Monday Night Movies continues through to October 6th.

Scheduled for August 18th is the historical drama *Kidnapped: The Abduction of Edgardo Mortara*. This award-winning film is a co-production of Italy, France, and Germany, and was selected to compete for the Palme d'Or at the 76th Cannes Film Festival in 2023. Because this film is not rated, moviegoers are encouraged to do their own research prior to attending the film.

The documentary *A Case for Love* will be shown August 25th. Bay View is fortunate to welcome the director of the film, **Brian Ide**, to the screening that evening. Ide is the founder of Grace-Based Films, a 501(c)(3) production company based in Hollywood whose mission is to "tell universal stories that reveal the complexity of living a life in hope and faith."

Hailed as "the film America and

every American needs right now," this feature-length documentary enters the lives of people living their lives selflessly. Their moving, deep-dive mini stories are connected by interviews with celebrities like Al Roker and Sam Waterston, politicians like Pete Buttigieg and John Danforth, and "random regular folks like us on the street."

Brian Ide will introduce the film that night. Afterwards, he and other members of Grace-Based Films will answer questions and/or lead a discussion about the film.

Two film classics, *Mr. Smith Goes to Washington* and *Double Indemnity* are on the September lineup. The UK film *Young Victoria* is the final film of 2025, scheduled for Monday, October 6th.



### Important 2025 Dates from Jen Cronk

**Friday, August 22, 2025: Board of Trustees Meeting at 8:30 a.m. in the Child Board Room.**

**Friday, September 12, 2025: Board of Trustees Meeting at 8:30 a.m. (Consent Agenda) in the Child Board Room.**

**Friday, September 26, 2025: Final Regular In-Person Board of Trustees Meeting at 8:30 a.m. in the Child Board Room.**

**Friday, October 10, 2025: - Board of Trustees Meeting at 8:30 a.m. (Consent Agenda) in the Child Board Room.**

**Monday, October 27, 2025: Board of Trustees Meeting via Zoom at 6:30 p.m. EST.**

**Monday, November 3, 2025: Final day cottagers can be in their cottage. Closing day of Bay View.**

**Monday, December 15, 2025: Board of Trustees Meeting via Zoom at 6:30 p.m. EST.**





## From the Performing Arts Director, Chris Ludwa

What a summer it has been! From our very first note to the final, Performing Arts at Bay View has been filled with music, laughter, and moments that will stay with us for years to come. We welcomed world-class artists, celebrated the incredible talents of our students, and shared countless evenings of inspiration together. Most of all, we felt the generosity and warmth of this remarkable community at every turn.

The 150th Jubilee season was nothing short of magical. Our audiences were engaged and passionate, our artists inspired, and our students challenged to grow in remarkable ways. None of this would have been possible without the support of our donors—your belief in the power of live music is what fuels our mission. We thank you from the bottom of our hearts for investing in this community and in the arts.

As we look ahead to next summer, we invite you to join us in shaping another unforgettable season.

Sponsorship opportunities for 2026 include:

- **Chamber Music Concert** – \$500
- **Youth Theater** – \$1,000
- **Vesper Concert** – \$3,000
- **Musical** – \$3,500
- **Opera** – \$3,500
- **Pops Concert** – \$5,000
- **Music Faculty Position** – \$5,000
- **Student Scholarships:**
  - Spirituals – \$2,000
  - Winds – \$3,500
  - Strings – \$3,500
  - Brass – \$3,500
  - Opera – \$4,500

Every contribution, large or small, plays a vital role in keeping music alive at Bay View. Your sponsorship directly impacts our ability to bring world-class performances, offer transformative student training, and continue making the arts accessible to all.

Thank you for standing with us, believing in our mission, and ensuring the music plays on. We can't wait to see you next season!

## From the Recreation Director, Amy Liddicoat Seamster

**As we wrap up another fantastic summer in Bay View's Recreation Program, we want to extend our heartfelt thanks to everyone who made this season so memorable.** From sunny afternoons on the waterfront to lively games on Swift Field, we can declare this summer overflowed with fun, laughter, learning, growing, and community spirit.

**A special thank you** goes to our generous Rec Leader sponsors: **John and Lisa-Marie Maxson,**

**Brian and Jan McPheely, Kienan and Liz Murphy, Amy and Trent Bowman, J.J. Turkal and Jeffrey Conlin, Steve and Barb Turkal, and Betsey Spayde.** Your support made our programs possible, and your commitment to Bay View's youth is truly inspiring.

We are also deeply grateful to **Brian and Jan McPheely** for sponsoring a Bay View lifeguard this season—your generosity ensured our waterfront was not only a place of fun, but also one of safety for all.

Our thanks also go to the **Bay View Open, Woman's Council, Morning Council, and Campus Club** for supporting summer programming. Your generosity allows us to continue offering diverse, engaging activities that bring our campers together year after year.

One of those cherished traditions happens every Wednesday, when Campus Club members teach timeless, multigenerational games like lawn bowling, croquet, and shuffleboard. Thank you for sharing your time, talent, and treasure to pass these classic pastimes to the next generation. Many campers declared it was the highlight of their summer.

## Waterfront Reminders

- The weather is still perfect for waterfront activities—bring a friend! When the red flag is flying, there is no lifeguard; swimming is at your own risk.
- All boats and watercraft (including Sunfish, kayaks, paddleboards, and other vessels) must be registered with the Boathouse and have a current summer or winter storage fee on file.

- Vessels left without payment will be returned to your cottage and subject to a \$50 removal fee.
- **Deadlines:** Summer storage is due now; winter storage is due by **August 17th.**
- Payments can be made at the Administrative Office or by phone at (231) 347-6225.
- If you do not plan to store your SUP over the winter, please let us know.
- Waterfront lockers may be used until **October 1st.** After that date, unclaimed items will be removed and donated to local charities.

Finally, **thank you** to the many volunteers and our incredible staff whose energy, creativity, and dedication make each summer one to remember. From our volunteers to the Leaders to the Area Directors, we are proud to have a great team to ensure our campers have a great experience each year. Your dedication keeps Bay View's Recreation Program filled with *Fun and Recreation for ALL!*

## You're Invited!

**Munson Healthcare  
Petoskey Community  
Health Center  
Open House**

1619 Anderson Rd.  
September 25, 2025  
5-7 p.m.

Opening Day:  
September 29, 2025

Questions?  
Contact Craig Weckler  
cweckler@mhc.net  
(231) 213-1152

## From the Worship Director, Rev. Hilary Barrett

The final three preachers of the 2025 Worship Program conclude a rich season of diverse preachers and teachers, visionaries and healers who have come from across the country to help us reflect on the things that matter most.

### On Sunday, August 17th, we welcome the Rev. Aaron Tredway.

Rev. Tredway is the lead pastor of Fellowship City Church and vice president of Ambassadors Football International. He was the founder and executive director of the Cleveland City Stars, a professional soccer team, and is the author of *Don't Miss Your Life: The Secret to Significance, To Who: A Competition for Glory and Outrageous: Awake to the Unexpected Adventures of Everyday Faith*. A sought-after speaker and world traveler, Aaron has mentored thousands of athletes and coaches around the world. Aaron and his wife, Ginny, live in Cleveland, Ohio, with their son, Noah. *Rev. Tredway's visit is sponsored by the Solms Endowment and by your generous contributions to the Worship program.*



**On Sunday, August 24th, we will welcome the Rev. Dr. Julie Greyerbiehl**, pastor of Petoskey United Methodist Church. Greyerbiehl has an academic background in science,

holding a Bachelor of Science and a Ph.D. in Botany and Plant Pathology from Michigan State University. After completing her studies in the sciences, she felt called to ministry and went on to earn a Master of Divinity from Garrett-Evangelical Theological Seminary. Dr. Greyerbiehl combines her scientific background with her ministry, fostering a thoughtful approach to faith that values both knowledge and spirituality. *Dr. Greyerbiehl's visit is sponsored by the Worship Endowment and by your generous contributions to the Worship program.*



**Sunday, August 31st, will be my final Sunday as your Director of Worship.** It has been my privilege to serve Bay View for the past three years as Director of Worship and Religious Life. Thank you for all the ways you have welcomed me and supported this shared ministry. I sincerely believe that theology matters, now more than ever, and I look forward to the leadership Bay View will select for the future.





## Woman's Council

The Bay View Woman's Council celebrated the end of the Jubilee Season with the annual "Carry-In" Luncheon. The new Board Members, Marsha Bidwell, Ellen Liestenfeltz, and Debbie Loughlin, were installed.

Mark your calendars for the **Opening Luncheon at Stafford's Bay View Inn on June 18th, 2026.** Our speaker will be Bay View Historian and Archivist, Elizabeth Nelson. Woman's Council is also planning a Bazaar and Silent Auction later in the summer. Dates will be announced in the Midwinter Bulletin.

It was a wonderful season of fellowship and fun. We want to thank all Bay View members and friends for their support of our programs. We have finished the season with 91 Woman's Council members.

Rentals of the upstairs rooms at the Woman's Council Building are closed as of 8/15/25. Please contact Kathy Duquette (734) 239-3492 for 2026 reservations.

Contact Patti van der Have (239) 994-1000 regarding information and reservations for event rentals at the Woman's Council Building.



## From the Donor & Communications Director, Michelle Hansen

### Thank You, Lila Bolden

The Donor Relations Office extends a heartfelt thank-you to our summer intern, Lila Bolden for her exceptional work this summer. Every Friday, without fail, Lila created each edition of the *Town Crier*—working closely with our staff and the Bay View community to ensure it was timely, engaging, and beautifully presented.

In addition to producing the *Town Crier*, Lila managed our social media presence, bringing creativity and consistency to every post. She also collaborated on Jubilee communications and marketing, helping to share the spirit of our 150th season with audiences near and far.

Lila will be a junior at Northwood University in Midland, MI, pursuing an accelerated bachelor's degree in Marketing Communications and Digital Marketing as well as an accelerated **Master's degree in Business Administration**. She brought a great attitude to every day, jumped into each task and assignment with enthusiasm, and was truly a joy to work with. Lila's quick wit, great sense of humor, and ability to introduce our office to the current slang made every day even more fun.

We are excited to cheer her on, and we know she will have great success. She was a delight to work with, and as Annie says: "*Lila for president!*"

While we are sad to see her go, we hope you will join us in thanking Lila for her many contributions to Bay View this summer—and in wishing her the very best in the bright future ahead.



## Farewell to the Jubilee Organ Concert

Bay View's 150th Jubilee season concludes with a magnificent musical tribute: *Farewell to the Jubilee*, an organ concert performed by Dr. Kelly Hale on **Thursday, August 28th at 7:30 p.m. in Hall Auditorium.**

This special concert, sponsored by Carolyn Schloff In Memory of Charles E. Schloff, will showcase the full splendor of Bay View's treasured Robert C. Crist Memorial Organ, dedicated July 18, 1980. In a program entitled "Recollections and Remembrances," Dr. Hale, who has played the Robert C. Crist Memorial Organ for over 40 years, brings decades of artistry and deep connection to this grand finale performance. Known for his expressive style and command of the instrument, Dr. Hale will present a program that honors the past and looks to the future, an inspiring farewell to this Jubilee summer.

All are welcome to join us for this free concert and to experience the majesty of the Bay View Organ in its full glory.

## Environmental Success for the 150th Jubilee

*Submitted by Martha Gray*

When you host an outdoor picnic for over 1,000 people, the planning list is long—and the cleanup list is even longer! For nearly a year, Bay View's 150th Jubilee Events Team met to consider every detail: food and drink, music, children's activities, photography, campus layout, budgeting, volunteers, and yes—even garbage and recycling.

A rainy afternoon couldn't dampen the fun—or reduce the trash. Two

garbage collection sites were set up across campus, each with three clearly labeled bins:

Compostables, Trash Only, and Bottles, Cans & Cups. Thanks to our community's cooperation, garbage was sorted with care. Committee member and cottager JoEllen Gilbert reached out to the Emmet County Recycling Center months in advance to make sure Bay View was ready. "Being able to work with Emmet County Recycling provided a way for Bay View to see what can be done, and to take part in the important task of recycling," Gilbert shared.

While recycling logistics were taking shape, Executive Director Megan DeWindt was navigating food and beverage decisions: Should we do boxed lunches or paper bags? Provide utensils or skip them to reduce waste? Offer beverage choices or keep it simple? In the end, the committee chose the most environmentally friendly options within budget—opting for water as the sole beverage, which was warmly received by attendees.

DeWindt reflected, "We made some key decisions about recycling that ended up reducing waste significantly. Cleanup was easier, faster, and far less messy than expected."

Though it may be years before Bay View hosts another 1,000-person outdoor event, the 2025 Jubilee set a new standard for environmentally conscious gatherings. It's a model we hope to continue building on for years to come.

If you have ideas about recycling, composting, re-purposing, or other eco-friendly practices, we invite you to attend the next

Environmental Sustainability Interest Group (ESIG) meeting. Please reach out to **Don Duquette**, [duquette@umich.edu](mailto:duquette@umich.edu) for the date and zoom link. Or, send your ideas to **Ann Dougherty**, (513) 535-3062, [hn1306@wayne.edu](mailto:hn1306@wayne.edu)

***Thank you to all committee members, cottagers, and attendees!***

## Have You Picked Up Your Free Gift?

A sesquicentennial gift from the Historic Awareness Committee is available to all cottages. The book *Documenting the History of Bay View* may be picked up in the Wade Administration Building. The book is a collection of articles tracing Bay View's history largely through contemporary newspaper accounts. The extensive excerpts from northern Michigan's newspapers that date back to the founding of Bay View, provide interesting glimpses of camp ground and Chautauqua life, and the growth of our summer community.

## Inside the Archives

August 1st was a record-setting day for the Bay View Archives! More than four times the average number of visitors signed in for help with cottage histories, time capsule input and other research needs.





## Great Lakes Chamber Orchestra Opens its Season in Bay View

The Great Lakes Chamber Orchestra opens its 25th Anniversary Season on **Saturday, September 6th at 7 p.m. in Hall Auditorium** with Beethoven's *Eroica* and Mozart's *Concerto for Two Pianos*.

Conducted by Maestro Libor Ondras, the concert **features Bay View finest: Tony Patterson and Casey Robards**. They will perform Mozart's only concerto for two pianos—playing it together for the first time.

The evening also premieres the orchestral version of Patterson's *The Match*, dedicated to the Berles family. Inspired by tennis, it unfolds in three movements representing each set, with Paul Tomey guest conducting the first movement.

Patterson, Bay View's Minister of Music, is celebrating 40 years since first arriving as a student in 1986. Robards, a former faculty member and guest artist, also began as a student. The two met in Bay View and married in Crouse Chapel ten years later.

The second half of the program features Beethoven's groundbreaking *Eroica* Symphony No. 3—hailed for its bold length, complexity, and emotional depth. Originally dedicated to Napoleon, Beethoven famously withdrew the dedication and instead embraced the idea of heroism in all people, reflecting his own struggles with deafness.

Tickets (\$35, \$45, \$65 assigned seating) are available at [glcorchestra.org/concerts](http://glcorchestra.org/concerts) or by calling (231) 487-0010.

Complimentary tickets are offered to veterans, active service members, and students 18 and under. **A pre-concert talk** with Ondras begins at **6 p.m. in Evelyn Hall**, followed by a post-concert cookie reception.

## End of Season Survey

Dear Bay View members, families, guests, and community members: The Bay View Association would like your feedback regarding your experiences in Bay View in 2025 and opinions regarding the future of Bay View. As a participant, we are asking you to fill out our Annual Survey to tell us how we did this Summer. It will take you as little as 10 minutes to complete. Here's the link:

<https://survey.alchemer.com/s3/8422734/BV-Pulse-Survey-2025>

**Who can participate?** Any adults 18 and over who visited Bay View or participated in our 2025 programming offerings in Education, Performing Arts, Recreation, and Worship. **Please help us get this survey in every eligible person's hands.**

- **For leaseholding members,** we're asking you to forward this email to every person who visited your cottage this summer. This includes spouses, children, grandchildren, renters, community members, and other guests over the age of 18.
- **If you came into Bay View and purchased a ticket to a concert or event for multiple people,** we're also asking you to forward this email to every person for whom you purchased tickets over the age of 18.

**What will we be doing?** You will be participating in a survey that takes as little as 10 minutes to complete. All information shared will remain

confidential. A report of this survey will be provided to the Bay View Board of Trustees for planning purposes, and no identifying information will be used. The survey is voluntary and anonymous. If you choose to participate, you may skip any questions that you can't or don't want to answer.

**Why would I do this?** You will be providing valuable feedback on what aspects of the Bay View 2025 program you participated in and how satisfied you are with the various aspects of the 2024 assembly program. Your response can contribute to a strong program in 2026 and better long-range planning for Bay View.

**I would like to participate. What should I do?** Please click the link above to fill out the survey.

**What's the Due Date? Please complete this survey by August 25th.**

**I have questions about this survey. Who should I contact?** Please contact The Long-Range Planning Committee via email at [lrpcomm@bayviewassociation.org](mailto:lrpcomm@bayviewassociation.org) with any questions or concerns.

## A Message from the Membership Committee

We welcome all applicants to Bay View membership! The application process is managed by the Membership Committee with support from Bay View staff. The approval process usually requires up to nine weeks but can take as little as four weeks, depending on the timing of the various steps. The elements of the process are:

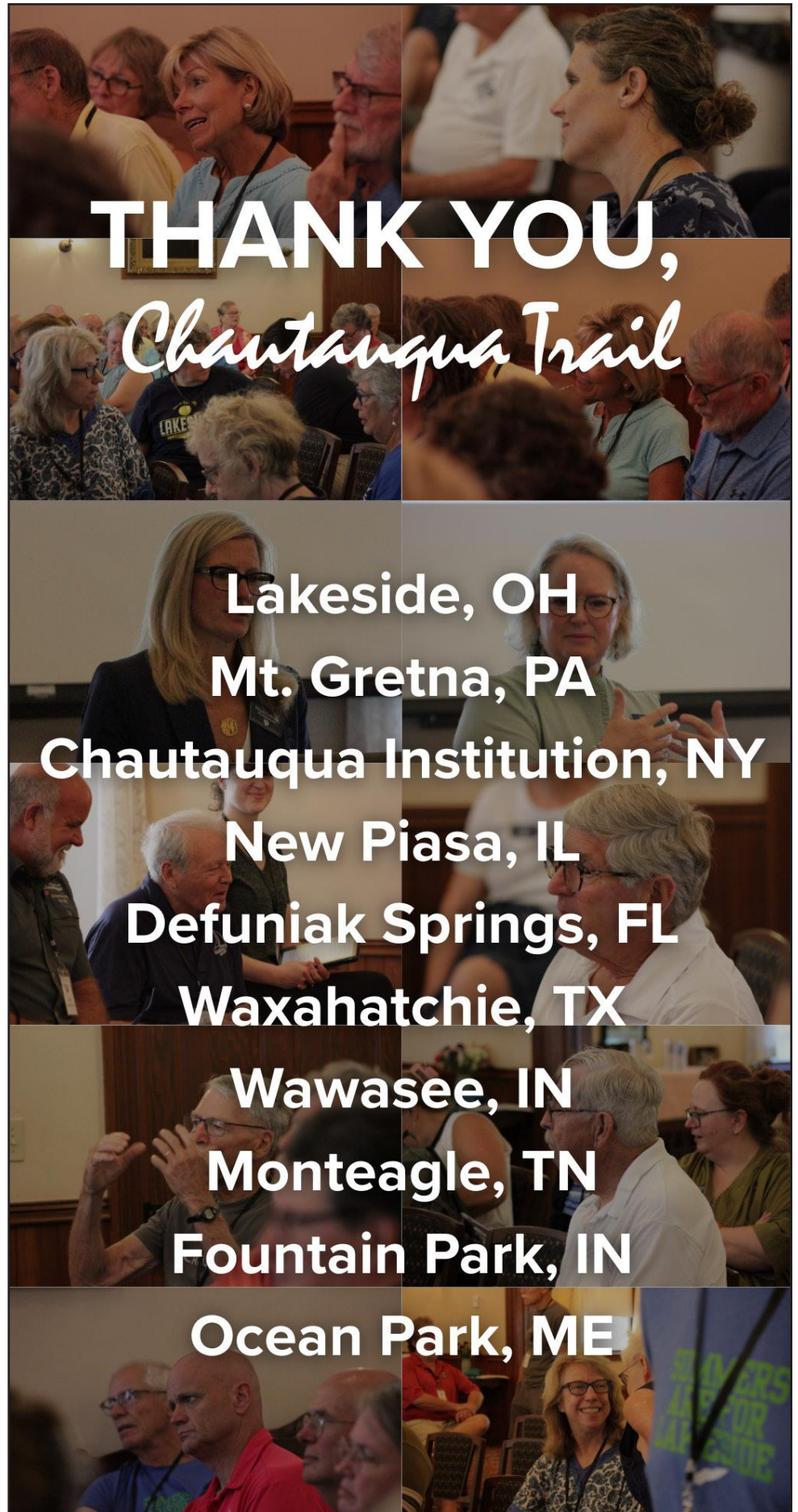
1. Obtain an application from the Wade Office or online. There is an application fee of \$300.



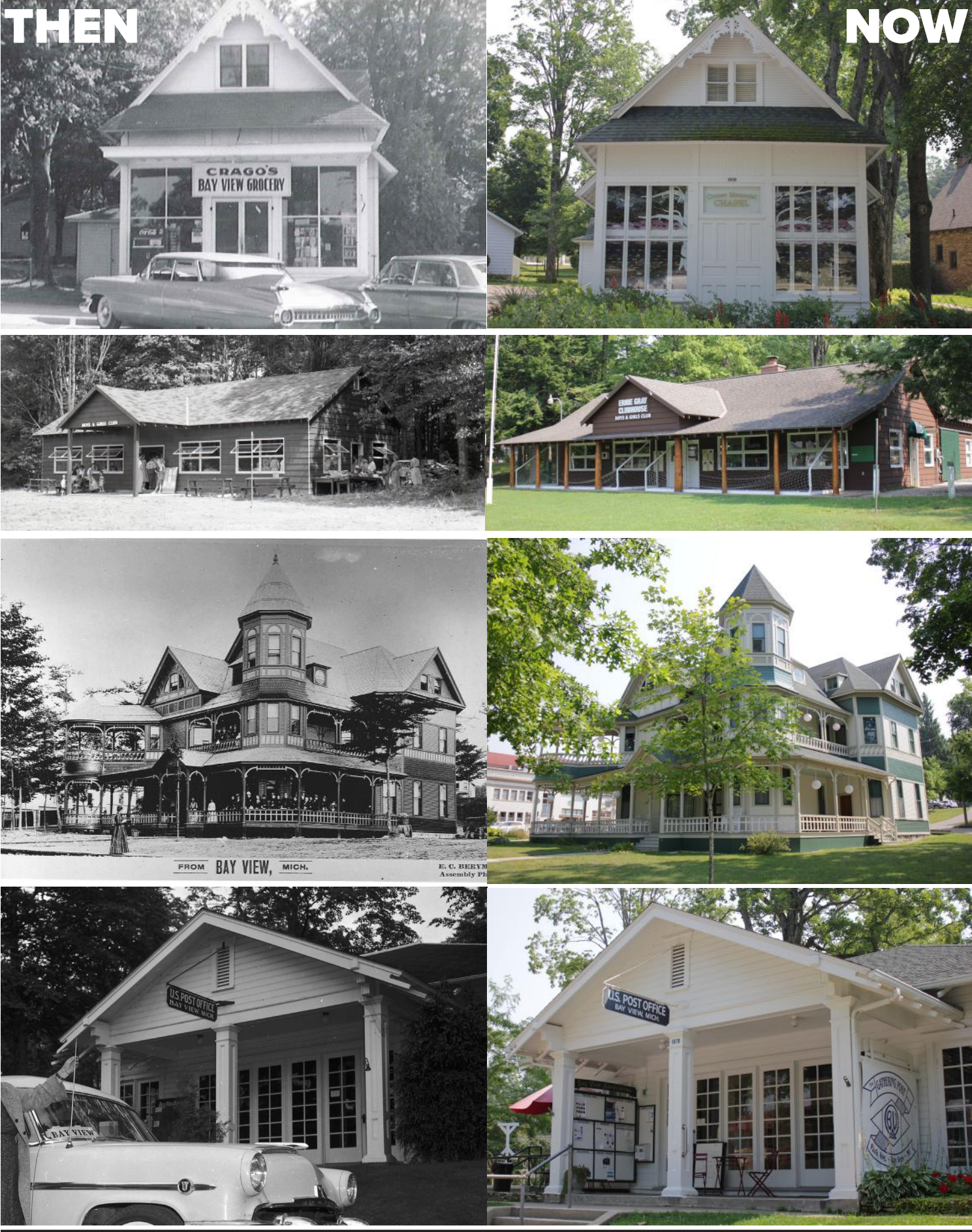
2. Once the application is returned, Bay View staff will contact the applicant's references to request letters. *Note that four letters of reference are required. Two must be from Bay View members and one of those must be from a lease holding member.*
3. Once the fee and all reference letters have been received, the applicant is notified of their receipt by the Bay View staff. The applicant will request an interview with the Membership Committee for a date when the applicant plans to be on campus. *Please allow a two week notice to schedule the interview.*
4. After the interview has been completed, the Membership Committee meets and reviews the applicant's file and then makes a recommendation to the Board.
5. The Board meets and votes whether to approve the applicant as a member.
6. The applicant will be contacted by the Bay View staff informing them of their membership approval.

Finally, please note that for the 2025 season, interviews will be conducted through **September 2nd** for Lease transfer/ joining and Associate Memberships. After this date, we are only able to review applications for Leaseholding Memberships with a signed purchase agreement for a cottage.

Thank you for considering membership and for encouraging your friends and family to apply. We look forward to assisting you through the process!









## Through the Intern's Eyes

Growing up in Northern Michigan, it took me until the ripe age of 20 to finally step foot on Bay View's grounds—and within moments, I knew I had found someplace different. The air felt lighter, the lake shimmered just a bit brighter, and every face I passed carried a genuine smile. From my very first day, I was welcomed with open arms. In this community, I've been able to connect, grow, and truly spread my wings in ways I never imagined.

The magic of a Bay View summer doesn't just happen—it's built piece by piece by remarkable people. To the staff, thank you. Watching the behind-the-scenes work that makes each program come alive has been nothing short of inspiring. I've seen how big ideas transform into memorable moments, and how every detail is handled with care. These lessons in passion, dedication, and creativity are ones I'll carry far beyond my time here.

To the volunteers—you are the heartbeat of Bay View. Many of you give your time to multiple corners of this community, and your efforts are felt in every concert, every class, and every gathering. Your generosity doesn't just make Bay View run—it makes Bay View *Bay View*.

One of the most moving parts of my summer has been experiencing the depth of connection in this community. The care and warmth between people here can bring tears to your eyes. That connection is alive every Sunday night at a Vesper concert, felt at every performance, and present all around campus. It's in the laughter shared on a sunny afternoon, the encouragement

offered behind the scenes, and the way everyone looks out for one another. This is the heart of Bay View—and it exists because of the people who love it.

Being the editor of *Town Crier* and sharing the joy of Bay View's community, both in print and on social media, has been an incredible gift. Capturing the stories, events, and everyday moments that make this place so special has deepened my appreciation for the creativity, energy, and heart that fuel this community. To share those stories and see the smiles they bring has been one of the most rewarding experiences of my summer.

I also have to thank my wonderful team at Block Rizz, Lot Cool—Michelle and Annie. Michelle's kindness is something I aspire to, and I've personally given her the unofficial title of "The Queen of Bay View." From day one, she took me under her wing, sharing her love for this place and teaching me lessons no classroom ever could. She showed me how to tap into true dedication—how to work hard, care deeply, and still find joy in the process.

Annie is equally extraordinary. Her quick wit and humor can brighten even the busiest day, and she's the kind of teammate who not only makes the work better but makes *you* better just by being around her. Her glass-half-full outlook turns challenges into possibilities, and her giving spirit has made every project lighter and every success sweeter. Between the three of us, I truly believe we are Bay View's version of Google—never letting a question go unanswered or a problem go unsolved.

This summer has been more than

a job—it has been a chapter of my life that has shaped me in ways I'm still discovering. Bay View has a way of planting itself in your heart, leaving a warmth and connection that stays long after the summer ends. I know this is just the beginning of my journey here. Thank you for letting me be part of the magic.



*Join Us!*



**Fun and Friendly Beginner Dance Classes**  
*at the Bay View Inn*

### CHOOSE YOUR STYLE:

#### Salsa Dancing

*Thursday, August 28 (3 - 4 p.m.)*

Whether you're new to dancing or just brushing up your moves, come join Zoe Marshall-Rashid as she guides you through each class!

After your dance class, please join us for a complimentary Social Hour at the Inn. This includes a glass of wine and light bites.

Scan to Register



**FINAL TRASH & RECYCLING PICK-UP FOR THE SEASON:**  
**RECYCLING - EVERY THURSDAY UNTIL 9/11**  
**TRASH - EVERY MONDAY UNTIL 11/3**

### POST-SEASON AT A GLANCE

#### Sunday

- **Assembly Worship**  
10:45 a.m. in Hall Auditorium  
(FINAL - August 31st)

#### Monday

- **Monday Night Movie**  
7:30 p.m. in Voorhies Hall  
(FINAL - October 6th)

#### Tuesday

- **Pot Luck Supper**  
6 p.m. at Campus Club  
(FINAL - October 21st)

#### Board of Trustees Meetings:

- **Friday, August 22nd**
- **Friday, September 12th**
- **Friday, September 26th**
- **Friday, October 10th**  
8:30 a.m. in Child Board Room

#### Special Events:

##### Thursday, August 28th

- **Farewell to the Jubilee - An Organ Concert by Kelly Hale**  
7:30 p.m. in Hall Auditorium

##### Saturday, September 6th

- **Great Lakes Chamber Orchestra - Beethoven's Eroica**  
7 p.m. in Hall Auditorium

**FINAL**  
**TOWN**  
**CRUER**  
**UNTIL NEXT**  
**SEASON...**



(231) 347-6225

<https://www.bayviewassociation.org/>  
[comm@bayviewassociation.org](mailto:comm@bayviewassociation.org)

### STAY IN TOUCH

1715 Encampment Avenue  
P.O. Box 583  
Petoskey, MI 49770



Bay View Association  
Bay View Music Festival



@BayViewMichigan



@BayViewMichigan  
@BayViewMusicFestival

### BAY VIEW MISSION

*To be an institution in which Christian values\* and traditions are central. To enrich the human experience for individuals and families within Bay View and the surrounding community through a seasonal program of religious, educational, cultural and recreational opportunities. To provide a Christian perspective in a changing world.*

*\*Such as love, faith, grace, hope, respect, hospitality, and service to others.*