



VICTORIAN QUILTERS INC.

QUILT

SHOWCASE

2021

CATEGORY 1

MAINLY PIECED QUILTS

TRADITIONAL

QUILT SHOWCASE 2021
MAINLY PIECED QUILTS - TRADITIONAL

1.1 Mainly Pieced Amateur

Sponsored By

Gum Valley Patchwork

QUILT SHOWCASE 2021

MAINLY PIECED QUILTS - TRADITIONAL

1.1 Mainly Pieced Amateur

1ST Prize: (4) Aves By Bronwyn Walkley

Sponsor: [Gum Valley Patchwork](#)



Size: 155cm x 155cm

Techniques: Hand Applique & Machine Piecing

Artist Statement:

Aves was released as a Block of the week pattern in 2019, using my own material. I did not finish all the piecing and assembly until Lockdown 2020, and have finally finished the quilting in Lockdown 6 2021. Designer Kathryn Kerr

QUILT SHOWCASE 2021

MAINLY PIECED QUILTS - TRADITIONAL

1.1 Mainly Pieced Amateur

Runner Up: (2) 1718 Coverlet Reproduction by Maureen Mackie

Sponsor: [Gum Valley Patchwork](#)



Size: 172cm x 195cm

Techniques: Hand Applique, Hand Piecing and Machine Piecing

Artist Statement:

Reproduction of the 1718 Coverlet, pattern by Susan Briscoe.

Needle turn appliqué, hand and machine pieced.

Hand quilted.

I decided to quilt in the ditch as the original quilt was a coverlet and not quilted.

QUILT SHOWCASE 2021

MAINLY PIECED QUILTS - TRADITIONAL

1.1 Mainly Pieced Amateur

(1) Drops of Jupiter by Lois Johnson



Size: 186cm x 186cm

Techniques: Machine Piecing

Artist Statement:

Jen Kingwell, Drops of Jupiter pattern. For the border I have adapted the template from the pattern to make my own border.

QUILT SHOWCASE 2021

MAINLY PIECED QUILTS - TRADITIONAL

1.1 Mainly Pieced Amateur

(3) Star Hexi's by Denise Reynolds



Size: 182cm x 183cm

Techniques: Hand Piecing

Artist Statement:

Is it a star or boxes? Made from reproduction fabrics.

QUILT SHOWCASE 2021
MAINLY PIECED QUILTS - TRADITIONAL

1.2 Mainly Pieced Professional

Sponsored By

Wangaratta Centre Quilters Inc.

Sew Steady

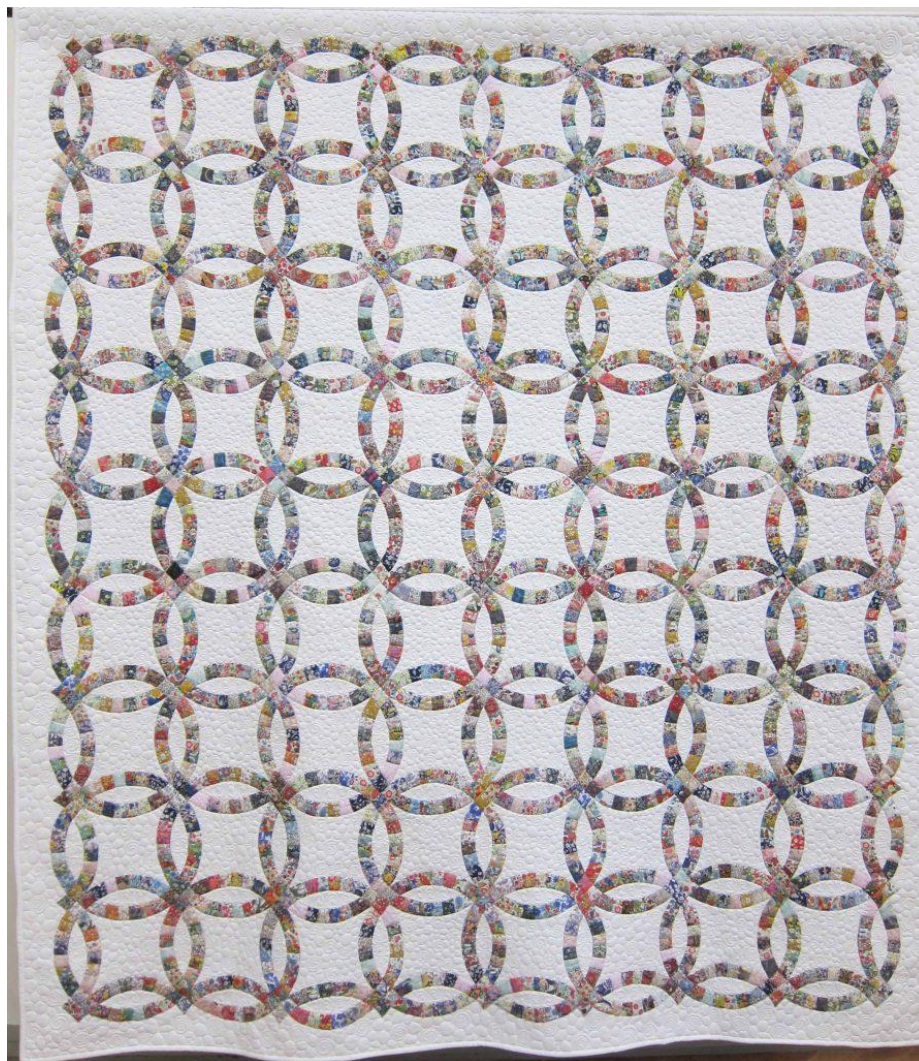
Yazzi

QUILT SHOWCASE 2021
MAINLY PIECED QUILTS - TRADITIONAL

1.2 Mainly Pieced Professional

1ST Prize: (7) Wedding Dreaming in Liberty by Jude Liebmann

Sponsor: Wangaratta Centre Quilters Inc.



Size: 186cm x 214cm

Techniques: Hand Piecing

Artist Statement:

Traditional Double wedding ring in Liberty. Hand stitched and quilted on a domestic machine.

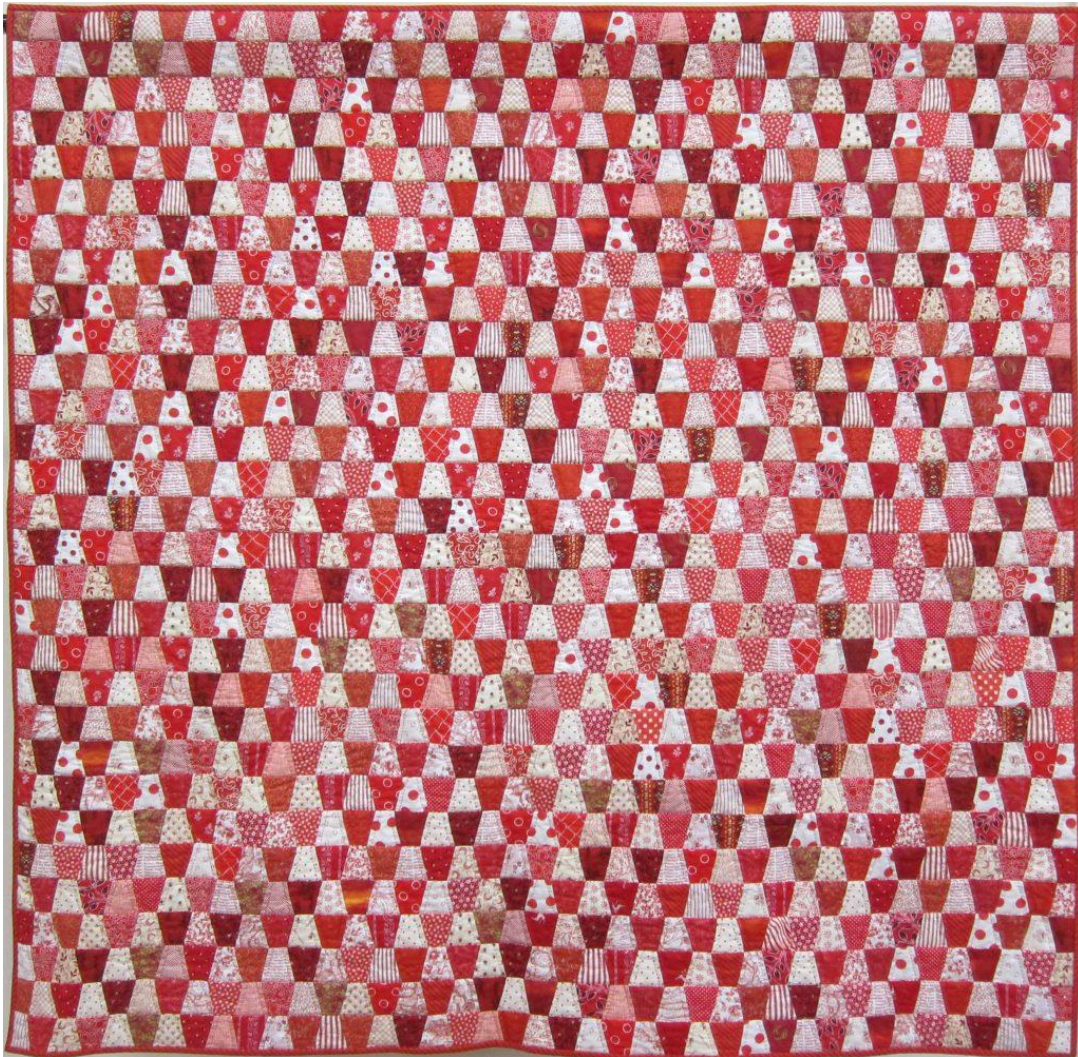
QUILT SHOWCASE 2021

MAINLY PIECED QUILTS - TRADITIONAL

1.2 Mainly Pieced Professional

Runner Up: (8) Red-dy to Tumble by Robyn Packham

Sponsor: [Sew Steady](#)



Size: 172cm x 195cm

Technique: Machine Piecing

Artist Statement:

I have always wanted to make a red and white quilt, so this is it.

QUILT SHOWCASE 2021

MAINLY PIECED QUILTS - TRADITIONAL

1.2 Mainly Pieced Professional

Highly Commended

Sponsor: [Yazzii](#)

(5) Pretty as no. 2 by Annie Andrews



Size: 147cm x 147cm

Techniques: Hand Piecing and Hand Applique

Artist Statement:

A wonderful Lucy Boston Quilt of the Crosses. Loved the fussy cutting, and inspired by Trish Harper to use the stripes

QUILT SHOWCASE 2021

MAINLY PIECED QUILTS - TRADITIONAL

1.2 Mainly Pieced Professional

(6) Harvest Shimmer by Debra Edmonds



Size: 126cm x 126cm

Techniques: Machine Piecing

Artist Statement:

Shimmering Triangles pattern by Jenny Bowker. A Facebook group dedicated to this pattern finally inspired me to pull the pattern out of the cupboard and have a go. With my trusty design wall, podcasts to listen to and oodles of time at home, it was a great autumn/winter project over last year's lockdown.

QUILT SHOWCASE 2021
MAINLY PIECED QUILTS - TRADITIONAL

1.2 Mainly Pieced Professional

(9) Beyond the Golden Curtain No. 2 by Kathy Sinclair



Size: 178cm x 171cm

Technique: Machine Pieced

Artist Statement:

This quilt incorporates original design with the added beauty of gold metallic thread quilting to highlight the colours of the gorgeous batiks. Beautiful, rustic, oozing character, and featuring tigers painted from the talented hand of Jenny Newland and used with her permission, along with my original design in lay out and block design.

QUILT SHOWCASE 2021

MAINLY PIECED QUILTS - TRADITIONAL

1.2 Mainly Pieced Professional

(10) Strawberry Jam by Sue Terpin



Size: 198cm x 234cm

Technique: Hand Piecing

Artist Statement:

This is my version of a traditional quilt. It is a little bit scrappy, plus a little bit rainbow and lots of little half square triangles make the points. Finally, the backing fabric on this makes me think of strawberry jam. All good things.

QUILT SHOWCASE 2021
MAINLY PIECED QUILTS - TRADITIONAL

*1.3 Mainly Pieced Two-Person
Amateur/Professional*

*Sponsored By
Murray River Quilters Inc.
Sew Steady*

QUILT SHOWCASE 2021

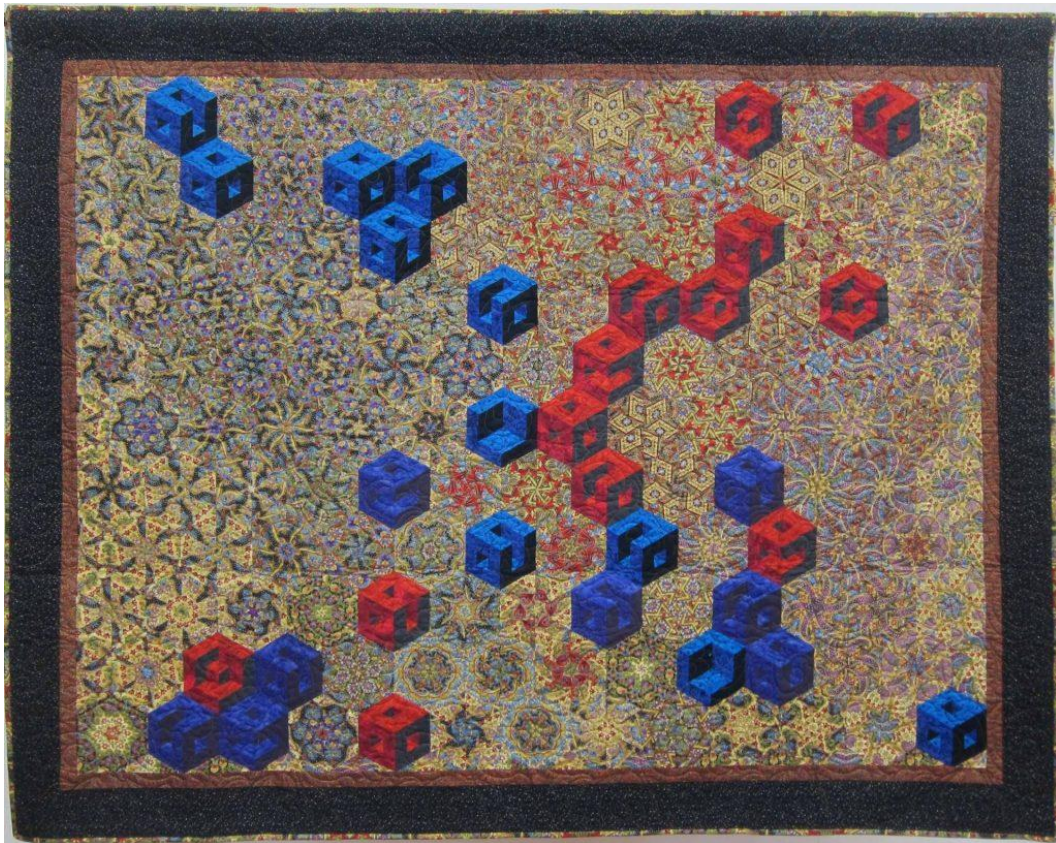
MAINLY PIECED QUILTS - TRADITIONAL

1.3 Mainly Pieced Two Person Amateur/Professional

1ST Prize: (12) One Block Wonder 2020

Pieced by Lois Johnson, Quilted by Judy Simcock

Sponsor: [Murray River Quilters Inc.](#)



Size: 224cm x 178cm

Techniques: Machine Pieced, Long Arm Quilting

Artist Statement:

One Block Wonder Encore by Maxine Posenthall and Joy Pelzmann pattern. One Block Wonder technique with floating cubes. This is my own layout and designs using the methods in the pattern.

QUILT SHOWCASE 2021

MAINLY PIECED QUILTS - TRADITIONAL

Mainly Pieced Two Person Amateur/Professional

Runner Up: (11) Dinner Plate Dahlia

Pieced by Gayle Adlington, Quilted by Naomi Hynes

Sponsor: [Sew Steady](#)



Size: 248cm x 248cm

Techniques: Foundation piecing with some hand applique;
Long Arm Computer assist and hand guided quilting

Artist Statement:

This pattern was designed by Judy Niemeyer of Quiltworx. It is a technique of the month program run at Palm Beach Quilting, Certified Quiltworx shop..

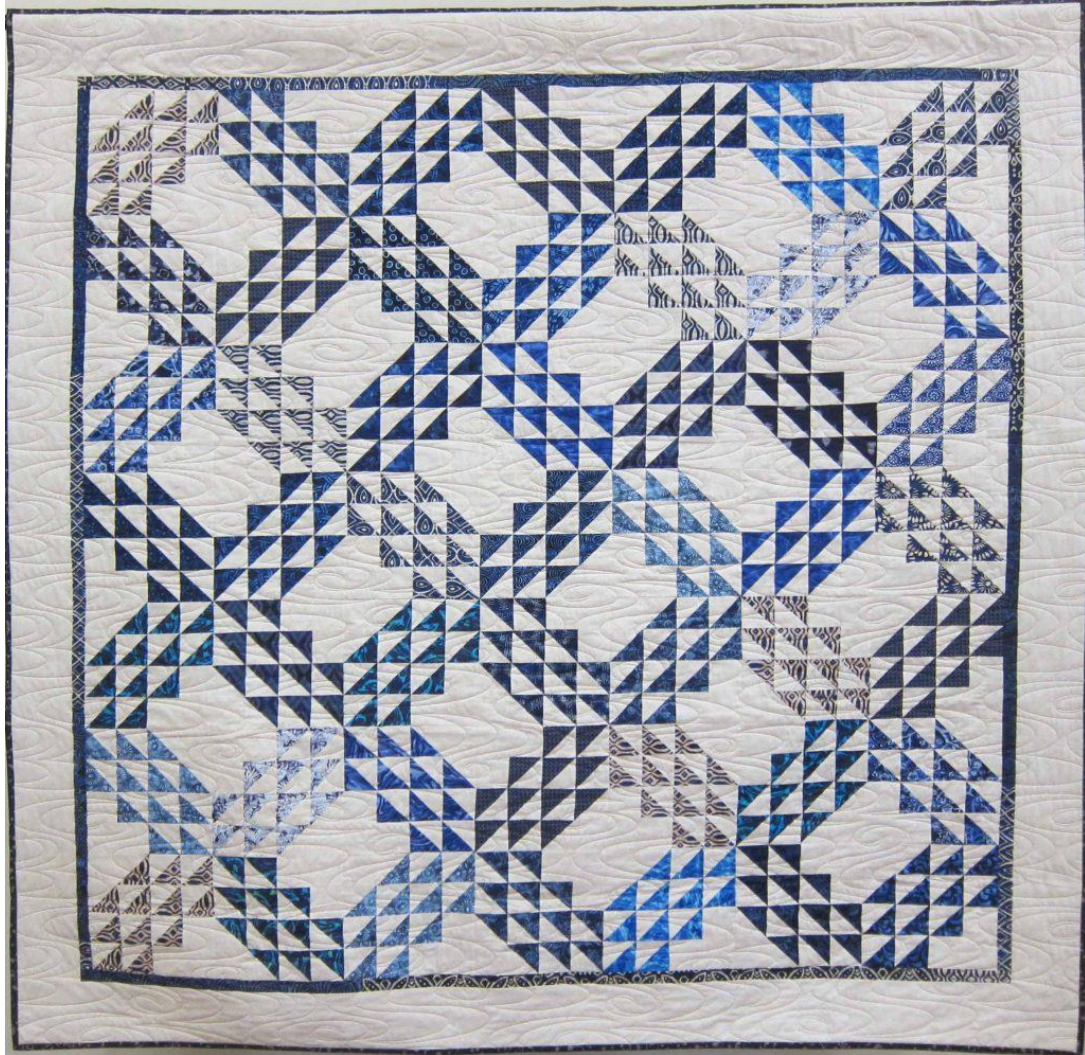
QUILT SHOWCASE 2021

MAINLY PIECED QUILTS - TRADITIONAL

1.3 Mainly Pieced Two Person Amateur/Professional

(13) Ocean Groves Waves

Pieced by Betty Scott, Quilted by Judy Bubb



Size: 208cm x 208cm

Techniques: Machine Paper Piecing

Long Arm Computer Assisted Quilting

Artist Statement:

Traditional Ocean Waves pattern from the Fat Quarter Shop, using paper piecing to ensure sharp points on the waves. My Grandson chose the Ocean Waves pattern and asked for it to be made using sea colours in mainly batik indigo fabrics.

QUILT SHOWCASE 2021

MAINLY PIECED QUILTS - TRADITIONAL

1.3 Mainly Pieced Two Person Amateur/Professional

(14) Carolina Lily

Pieced by Frances Toscano, Quilted by Vicki Jenkin



Size: 165cm x 165cm

Techniques: Machine Pieced, Long Arm Quilting

Artist Statement:

This is my interpretation of a pattern by Joanna Figueroa. Machine pieced using florals and white for a fresh look. I worked on this quilt at classes with Meredith Clark pre Covid 19.

QUILT SHOWCASE 2021
MAINLY PIECED QUILTS - TRADITIONAL

*1.4 Mainly Pieced Two Person
Professional*

Sponsored By

*Patchwork & Quilters Guild of Victoria
Inc.*

*Elm Grove Patchwork
Seabreeze Quilters Inc.*

QUILT SHOWCASE 2021

MAINLY PIECED QUILTS - TRADITIONAL

1.4 Mainly Pieced Two Person Professional

1ST Prize: (15) Strawberry and Cream

Pieced by Wendy Blyth, **Quilted by** Jenny Gibson

Sponsor: Patchwork & Quilters Guild of Victoria Inc.



Size: 190cm x 190cm

Techniques: Machine Pieced, Long Arm Hand-guided Quilting

Artist Statement:

My own design inspired by a picture I saw in a book called "Maryland Album". I used the basic block and border design and expanded it and added my own enhancements

QUILT SHOWCASE 2021

MAINLY PIECED QUILTS - TRADITIONAL

1.4 Mainly Pieced Two Person Professional

Runner Up: (19) One Day, One Block, One Year

Pieced by Sherrel Meyer, Quilted by Judy Simcock

Sponsors: [Elm Grove Patchwork](#), Seabreeze Quilters Inc.



Size: 248cm x 248cm

Techniques: Machine Pieced;

Long Arm Computer assist and hand guided quilting

Artist Statement:

Kathryn Kerr's 365 challenge. I received a block each day by email. I enjoyed the challenge of making small blocks using just 2 colours.

QUILT SHOWCASE 2021

MAINLY PIECED QUILTS - TRADITIONAL

1.4 Mainly Pieced Two Person Professional

(16) Emerald Star

Pieced by Margaret McDonald, Quilted by Susan Campbell



Size: 150cm x 149cm

Techniques: Machine Paper Piecing

Long Arm Computer Assisted Quilting

Artist Statement:

PAINLESS PATCHWORK BY ROSEMARY DONOHUE pattern/design. Lone star quilt which has been pieced using colours from the opposite side to the colour wheel.

QUILT SHOWCASE 2021

MAINLY PIECED QUILTS - TRADITIONAL

1.4 Mainly Pieced Two Person Professional

(17) Fair Wind

Pieced by Shelley Kelly, Quilted by Susan Campbell



Size: 203cm x 229cm

Techniques: Machine Pieced, Long Arm computer assisted Quilting

Artist Statement:

Fair Wind was inspired by "Journey to America "by Judie Rothermel. The beautiful Mayflower Ship is featured in quilt Q2 the centre and corners of medallion border. Each border features favourite fabrics, blocks, ending with floating stars on point and triangle border top and bottom.

QUILT SHOWCASE 2021

MAINLY PIECED QUILTS - TRADITIONAL

1.4 Mainly Pieced Two Person Professional

(18) Galaxy

Pieced by Margaret McDonald, Quilted by Susan Campbell



Size: 190cm x 204cm

Techniques: Machine Pieced, Long arm computer assisted quilting

Artist Statement:

There is something about star designs in quilts that are simply endless. Galaxy is the very traditional sunburst quilt pattern with my selection of colours.