



TRUTH ON THE WATER™



SHOWN: **M-SERIES**

2026 PRODUCT PREVIEW

THE NEXT GENERATION OF HELM DESIGN

The Malibu Command Center™ puts total control of your boat and all of its features at your fingertips. Seamlessly combining control of Malibu's Surf Systems, music, lighting, navigation, and camera feeds. The Malibu Command Center™ effortlessly ensures that control of the boat's most important information and systems is always at hand.



ALL-NEW ELECTRIC POWERED & HEATED STEERING



E-Z STASH BOARD LOCKER™



ALL-NEW EDGEFORCE PTM BOARD RACKS



ALL-NEW PTM EASY-FLIP BIMINI

INNOVATION THAT MOVES YOU
**YOUR PERFECT
 WAVE & WAKE**

Perfect wakes and waves behind the world's #1 wakeboat brand are at your fingertips — and it all starts with our unbeatable foundation of patented innovations that produce customizable wakes and waves in any conditions with the push of a button



PATENTED SURF PERFECTION

Malibu's patented, ocean-style wave creates the perfect ride for any rider on either side of the boat without having to move any people around.



SHAPE YOUR WAVE

Customize the wave with Power Wedge III to make it steeper for airs or longer for big bottom turns and endless spins.



CONTROL WHILE YOU SURF

Surf Band unlocks Malibu's Surf Gate, which instantly creates a perfect wave on either side of the boat without moving any weight.



CHOSEN BY THE
 INTERNATIONAL WATERSKI & WAKEBOARD FEDERATION
 AS THE OFFICIAL TOWBOATS OF THE WORLD CHAMPIONSHIPS



VOTED 2025 BEST WAKESURF & WAKEBOARD WAVES
 6 YEARS IN A ROW, THE 23 LSV IS THE BOAT OF THE YEAR

WAKESETTER LSV SERIES

The Luxury Sport V-drive, or LSV, series is the world's best-selling traditional bow wakeboats.

ALL-NEW 22 LSV



HULL TYPE: Wake Plus/Diamond
TORQUE: 400-460ft-lbs
MAX BALLAST: 4,160 lbs.*
FUEL: 58 gal

WEIGHT: 5,400 lbs
LENGTH: 21'11"
BEAM: 102"
DRAFT: 32"
CAPACITY: 14 People

MAX BALLAST includes four hard tanks, Power Wedge III and approved Plug 'n Play bags (see dealer). MLS6 on M242 includes 6 hard tanks, Power Wedge III, no Plug 'n Play bags needed

[DESIGN YOUR 22 LSV](#)

[DISCOVER THE 22 LSV](#)

[EXPERIENCE THE 22 LSV](#)

25 LSV



HULL TYPE: Wake Plus
TORQUE: 460-606ft-lbs
MAX BALLAST: 4,685 lbs.*
FUEL: 96 gal

WEIGHT: 6,450 lbs
LENGTH: 25'
BEAM: 102"
DRAFT: 32"
CAPACITY: 18 People

[DESIGN YOUR 25 LSV](#)

[DISCOVER THE 25 LSV](#)

[EXPERIENCE THE 25 LSV](#)



2025 WAKESURF & WAKEBOARD BOAT OF THE YEAR
VOTED BY YOU 6 YEARS IN A ROW!

23 LSV



HULL TYPE: Wake Plus/Diamond
TORQUE: 400-606ft-lbs
MAX BALLAST: 4,435 lbs.*
FUEL: 65 gal

WEIGHT: 5,700 lbs
LENGTH: 23'
BEAM: 102"
DRAFT: 32"
CAPACITY: 15 People

[DESIGN YOUR 23 LSV](#)

[DISCOVER THE 23 LSV](#)

[EXPERIENCE THE 23 LSV](#)

26 LSV



HULL TYPE: Wake Plus
TORQUE: 606ft-lbs
MAX BALLAST: 6,100 lbs.*
FUEL: 115 gal

WEIGHT: 7,000 lbs
LENGTH: 26'5"
BEAM: 102"
DRAFT: 32"
CAPACITY: 18 People

[DESIGN YOUR 26 LSV](#)

[DISCOVER THE 26 LSV](#)

[EXPERIENCE THE 26 LSV](#)

WAKESETTER MXZ SERIES

MXZ stands for maximized. This is the luxury pickle-fork bow lineup.

22 MXZ



HULL TYPE: Wake Plus	TORQUE: 400-460ft-lbs	MAX BALLAST: 4,170 lbs.*	FUEL: 58 gal
WEIGHT: 5,600 lbs	LENGTH: 21' 11"	BEAM: 102"	DRAFT: 32"
		CAPACITY: 15 People	

DESIGN YOUR 22 MXZ

DISCOVER THE 22 MXZ

EXPERIENCE THE 22 MXZ

23 MXZ



HULL TYPE: Wake Plus	TORQUE: 400-606ft-lbs	MAX BALLAST: 4,600 lbs.*	FUEL: 65 gal
WEIGHT: 5,900 lbs	LENGTH: 23'	BEAM: 102"	DRAFT: 32"
		CAPACITY: 16 People	

DESIGN YOUR 23 MXZ

DISCOVER THE 23 MXZ

EXPERIENCE THE 23 MXZ

MALIBU OPEN EDITION SKI

13-Time Water Ski World
Record Holder.

24 MXZ



HULL TYPE: Wake Plus	TORQUE: 460-606ft-lbs	MAX BALLAST: 4,635 lbs.*	FUEL: 82 gal
WEIGHT: 6,600 lbs	LENGTH: 24' 5"	BEAM: 102"	DRAFT: 32"
		CAPACITY: 17 People	

DESIGN YOUR 24 MXZ

DISCOVER THE 24 MXZ

EXPERIENCE THE 24 MXZ

RESPONSE TXi



The Malibu TXi Official Towboat of the World Water Ski Championships

HULL TYPE: T-Cut Diamond	CAPACITY: 7 People	TORQUE: 400-460ft-lbs	FUEL: 40 gal
WEIGHT: 3,100 lbs	LENGTH: 20' 6"	BEAM: 95"	DRAFT: 22"

DESIGN YOUR TXi

DISCOVER THE TXi

EXPERIENCE THE TXi

MALIBU'S FLAGSHIP M-SERIES

The Unsurpassed Alphas, The Flagship of the iconic Malibu brand, the M-Series.

M230



The Malibu M230 Official Towboat of the
World Wakeboard & Wake Surf Championships

HULL TYPE: M-Line	TORQUE: 606ft-lbs	MAX BALLAST: 4,105 lbs.*	FUEL: 74 gal
WEIGHT: 6,750 lbs	LENGTH: 23'	BEAM: 102"	DRAFT: 32"
		CAPACITY: 16 People	

DESIGN YOUR M230

DISCOVER THE M230

EXPERIENCE THE M230

M242



HULL TYPE: M-Line	TORQUE: 606ft-lbs	MAX BALLAST: 4,719 lbs.*	FUEL: 94 gal
WEIGHT: 7,500 lbs	LENGTH: 24'2"	BEAM: 102"	DRAFT: 32"
		CAPACITY: 17 People	

DESIGN YOUR M242

DISCOVER THE M242

EXPERIENCE THE M242

VERSATILITY CROSSOVER

Water ski, wakesurf and wakeboard all day.

ALL-NEW 21 LX



HULL TYPE: Wake Plus/Diamond	TORQUE: 400-460ft-lbs	MAX BALLAST: 3, lbs.*	FUEL: 55 gal
WEIGHT: 5,000 lbs	LENGTH: 21' 5"	BEAM: 102"	DRAFT: 27"
		CAPACITY: 13 People	

DESIGN YOUR 21 LX

DISCOVER THE 21 LX

EXPERIENCE THE 21 LX

20 VTX



HULL TYPE: Cut Diamond	TORQUE: 400-460ft-lbs	MAX BALLAST: 3,585 lbs.*	FUEL: 39 gal
WEIGHT: 3,950 lbs	LENGTH: 20'	BEAM: 98"	DRAFT: 27"
		CAPACITY: 11 People	

DESIGN YOUR 20 VTX

DISCOVER THE 20 VTX

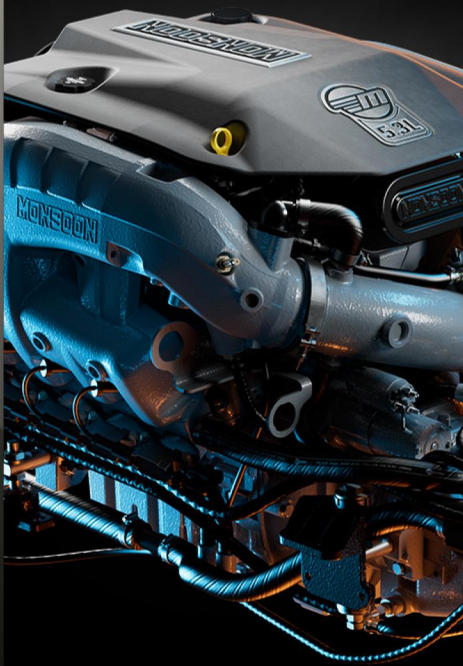
EXPERIENCE THE 20 VTX

HAND BUILT BY MALIBU

MALIBU MONSOON®

Malibu Monsoon® engines are made in-house to offer unmatched performance, fuel economy, reliability and sound reduction. Leaning on direct injection automotive technology fused with signature Malibu innovations, the industry-leading Monsoon line is designed to give your boat the power it deserves — exclusive to Malibu Boats.

M5



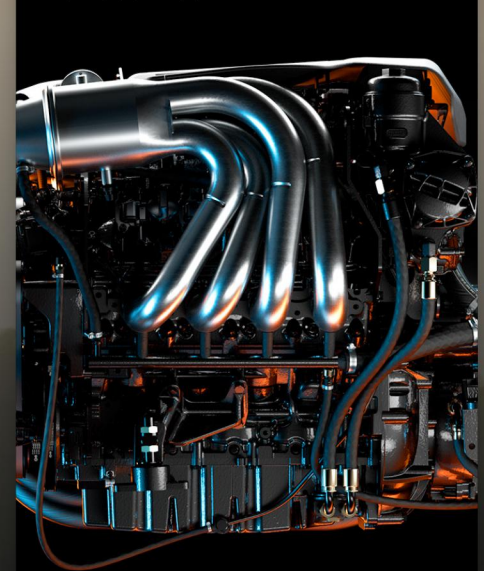
5.3L DIRECT INJECTED
TORQUE - 400 FT-LBS @ 3800 rpm
POWER - 360 HP @ 5600 rpm

M6



6.2L DIRECT INJECTED
TORQUE - 460 FT-LBS @ 3800 rpm
POWER - 430 HP @ 5600 rpm

LT4



**MOST POWERFUL
TOWBOAT ENGINE
EVER BUILT**

6.2L SUPERCHARGED DIRECT INJECTED
TORQUE - 670 FT-LBS @ 3800 rpm
POWER - 652 HP @ 5600 rpm

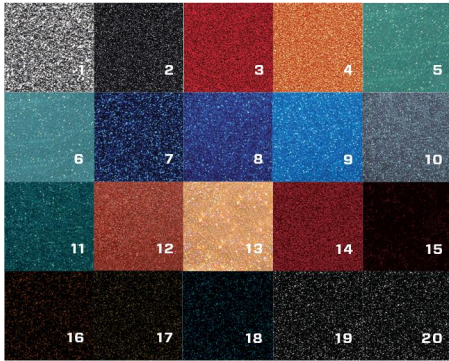
POWERED BY



MORE CUSTOMIZATION THAN ANYONE

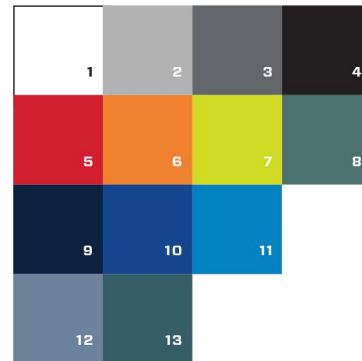
PREMIUM COLORS

Customize your Malibu with our premium gel coat, vinyl, soft grip, and decal options.



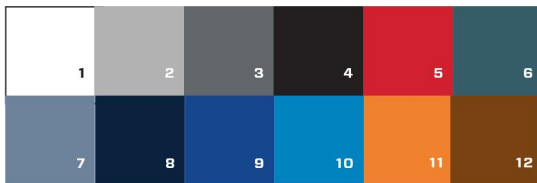
1. Machine Silver Metallic
2. Gunmetal Graphite Metallic
3. Indy Red Metallic
4. Vivid Orange Metallic
5. Capri Green Metallic
6. Sapphire Teal Metallic
7. Zephyr Blue Metallic
8. Dark Blue Metallic
9. Vapor Blue Metallic
10. Maya Blue Metallic
11. Nassau Blue Metallic
12. Sienna Coral Metallic
13. Tuscan Gold Metallic
14. Ruby Red Metallic
15. Ebony Indy Red Metallic
16. Ebony Vivid Orange Metallic
17. Ebony Gold Metallic
18. Ebony Vapor Blue Metallic
19. Ebony Metallic
20. Ebony Capri Green Metallic

METALLIC GELS



1. Arctic White
2. Light Graphite
3. Graphite
4. Ebony
5. Indy Red
6. Vivid Orange
7. Volt Yellow
8. Sapphire Teal
9. Zephyr Blue
10. Dark Blue
11. Vapor Blue
12. Maya Blue
13. Nassau Blue

SOLID GELS



BASE COLORS

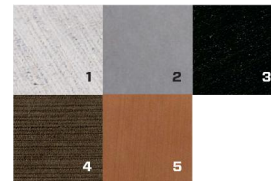
1. Arctic White
2. Light Graphite
3. Graphite
4. Ebony
5. Indy Red
6. Nassau Blue
7. Maya Blue
8. Zephyr Blue
9. Dark Blue
10. Vapor Blue
11. Vivid Orange
12. Sepia Brown



COOL COLORS

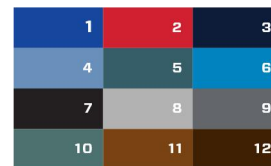
- C1. Ebony
- C2. Indy Red
- C3. Zephyr Blue
- C4. Nassau Blue
- C5. Dark Blue
- C6. Vapor Blue
- C7. Maya Blue
- C8. Graphite
- C9. Light Graphite
- C10. Carob Brown
- C11. Sepia Brown

INTERIOR & COOL TOUCH



BASE COLORS

1. Light Graphite
2. Graphite
3. Ebony
4. Carob Brown
5. Sepia Brown



ACCENT COLORS

1. Dark Blue
2. Indy Red
3. Zephyr Blue
4. Maya Blue
5. Nassau Blue
6. Vapor Blue
7. Ebony
8. Light Graphite
9. Graphite
10. Sapphire Teal
11. Sepia Brown
12. Carob Brown

SOFT GRIP BASE & ACCENT

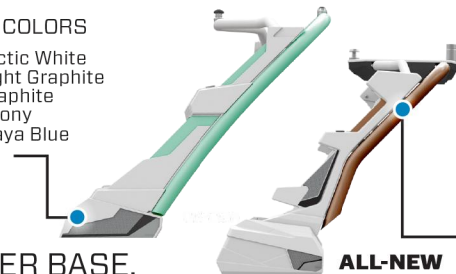


1. Arctic White
2. Graphite
3. Ebony
4. Indy Red
5. Zephyr Blue
6. Dark Blue
7. Vapor Blue
8. Maya Blue
9. Nassau Blue
10. Vivid Orange
11. Volt Yellow
12. Sapphire Teal
13. Capri Green
14. Sepia Brown

BOAT BADGING

BASE COLORS

1. Arctic White
2. Light Graphite
3. Graphite
4. Ebony
5. Maya Blue



TOWER BASE, HOOP & ACCENT

ACCENT COLORS

1. Arctic White
2. Light Graphite
3. Graphite
4. Ebony
5. Dark Blue
6. Indy Red
7. Zephyr Blue
8. Maya Blue
9. Vapor Blue
10. Nassau Blue
11. Vivid Orange
12. Capri Green
13. Sapphire Teal
14. Sepia Brown
15. Gunmetal Stainless
"Not powdercoated"

ALL-NEW ASCEND & ASCEND PRO TOWERS

TRUTH ON THE WATER

WHERE PERFORMANCE MEETS TRUTH

New for this year, the 21 LX, 22 LSV, and M-Series models showcase the range of Malibu's design philosophy—versatility, legacy, and luxury. Each brings its own strengths to the lineup while delivering the same Truth On The Water: unmatched capability backed by Malibu innovation.

ALL-NEW 22 LSV



ALL-NEW 21 LX



M-Series



** See your local dealer for more details.

FIND YOUR TRUTH

ARRANGE A PRIVATE VIEWING

