

# sonningcommon

magazine



# *A Fish Tale*

## NEW BEGINNINGS

# CARPET FITTER

Fitted Carpets & Vinyl Specialist

Underlays & Fixings Supplied

Re-Adaptions & Restretches

Measuring, Estimating & Planning

Carpets ★ Vinyl ★ Amtico ★ Kamdean

**25 YEARS EXPERIENCE**

**MICHAEL HODGSON**

TEL: 0118 901 1777 / MOB: 07841 586003

## Caversham Aerial Services

TV Aerials Supplied and Fitted.

Poor Reception? Old aerials?

Can't get the new digital channels?

*Give us a call - We can help!*

**Phone 0118 9673596**

[www.caversham-aerials.co.uk](http://www.caversham-aerials.co.uk)



## Outstanding Natural Beauty

Waxing, electrolysis, eyelash tinting,  
eyebrow shaping, make-up,  
Jessica manicures & pedicures,  
Aromatherapy facials.

**Tel: 0118 9723157**

Janet Copp I.H.B.C

9 Sedgefield Close, Sonning Common

[www.chilternbeauty.co.uk](http://www.chilternbeauty.co.uk)

## Property Consultants

Shops, Offices, Industrial, Investments  
Valuations, Rent Reviews, Lease Renewals

# Highmoor Cross

George Chilvers and Nigel Price FRICS

**0118 947 4600**

[www.highmoorcross.co.uk](http://www.highmoorcross.co.uk)

## JEN'S MOBILE HAIRDRESSING AND BARBER SERVICE

13 years experience

MEN'S CUT £7

WOMEN'S WET CUT £14 C/B DRY £20

CHILDREN'S CUT £5

COLOUR & HIGHLIGHTING AVAILABLE

**07753 253 476**



## SONNING COMMON PRE-SCHOOL

GROVE ROAD  
SONNING COMMON  
0118 972 4760

We are a happy friendly pre-school  
welcoming children from 2 years  
6 months, to come and learn through  
play. We have a purpose built building  
& extensive play garden.

Morning sessions are 9.00am - 12.00pm  
Afternoon sessions are 12.00pm - 3.00pm



## elements;

KITCHENS • INTERIORS

Visit our stunning showroom:  
8b Portman Road, Reading RG30 1EA  
Tel 0118 959 9919  
[www.elementskitchens.co.uk](http://www.elementskitchens.co.uk)



## Adam's Pest Control

Professional Pest Control in Sonning Common  
Rats, mice, rabbits, squirrels, moles, insects, foxes.  
Available 7 days a week.

BPCA Qualified and Fully Insured

Call 0118 9723709 or 0784 9342690

[www.adamspestcontrol.co.uk](http://www.adamspestcontrol.co.uk)





# From the editorial group

As we look forward to another new year I hope you will find something to interest you in this first edition of 2014. A distraction on these grey wet winter days might be getting out and about on the new FISH bus? The plans for the new FISH office and the developments for the future, make interesting reading.

Zack Hawkes has taken over from Anouska as our Junior editor and with different ideas to encourage younger readers. The Noticeboard has a number of activities listed which might appeal to those who may not already know about the many clubs in the Library. The Neighbourhood Development Plan articles provide an update on the 'Progress So Far'. The plan is moving towards its final stage and it is important everyone knows what is planned

The Community news is full of the achievements and happenings for people in Sonning Common, yet again a reminder of all that happens in this village and the community spirit which is still maintained. If you have something to say and would like to contribute to the magazine, the next deadline date is 1 March.

From the editorial team we wish you a very Happy and Healthy 2014.

*Diana*

**DIANA PEARMAN** Editor

Email: [editor@sonningcommonmagazine.org](mailto:editor@sonningcommonmagazine.org)

PS...

A resident has noticed that John Lewis was missed off the list of editors in 1988 – my apologies.

Sonning Common Magazine is on sale at the village library in Grove Road for £1.50 a copy. Annual subscriptions are available for £15. Contact Geoffrey Adams. Email: [chairman@sonningcommonmagazine.org](mailto:chairman@sonningcommonmagazine.org) Phone: 0118 972 2134

Magazine contributions may be posted to:  
1 Woodlands Road, Sonning Common RG4 9TD

## Contents

- 2 Chiltern Edge/Nottakwire/Fund raising
- 3 GCSE presentations/Cupcakes/Scout to Japan
- 4 Library volunteers/Computer buddies/  
Online safety
- 5 Harry Jessop/SCCS/Dementia training /  
Hedgehogs
- 8 Noticeboard
- 11 Parish Council news
- 13 NDP an introduction
- 14 In Focus – SON site report
- 16 NDP – Progress so far
- 18 The FISH tale/Have bus – will travel
- 19 FISH office
- 20 Tom Fort/letters
- 23 Just for Kids
- 25 Church news
- 28 Diary dates

### CHAIRMAN – Geoffrey Adams

1 Woodlands Road, Sonning Common, RG4 9TD  
email: [chairman@sonningcommonmagazine.org](mailto:chairman@sonningcommonmagazine.org)  
tel: 0118 972 2134

### DIARY DATES – Helen Barker

1 Walnut Close, Sonning Common, RG4 9DG  
email: [helen.barker@tesco.net](mailto:helen.barker@tesco.net)  
tel: 0118 972 1241

### ADVERTISING – John Pearman

50 Kennylands Road, Sonning Common RG4 9JT  
email: [advertising@sonningcommonmagazine.org](mailto:advertising@sonningcommonmagazine.org)  
tel: 0118 972 2381 / 07794 291776

### DISTRIBUTION MANAGER – Helen Gavin

25 Woodlands Road, Sonning Common, RG4 9TD  
email: [distribution@sonningcommonmagazine.org](mailto:distribution@sonningcommonmagazine.org)  
tel: 0118 972 4680

### CONSULTANT EDITOR – Ros Varnes

### JUNIOR EDITOR – Zack Hawkes

email:  
[junior\\_editor@sonningcommonmagazine.org](mailto:junior_editor@sonningcommonmagazine.org)

### COVER IMAGE

The Fish Bus by Diana Pearman

Design by:

**ten  
seven  
nine.**  
brand  
invigoration.

**tensevennine.com**





## Chiltern Edge Christmas Production...

**Chiltern Edge School presented their fifth Christmas musical production on three sold out evenings in December.**

This year the musical *Bugsy Malone* was chosen and The Performing Arts staff of Mrs Tottman, Miss Griffiths and Mr Harte steered the cast to a magnificently performed evening of music, drama and dancing, with a backstage team of many, helping with sets, costumes, lighting and sound. The front rows of the audience were treated to a 'shooting' of shaving foam each evening and the cast seemed to enjoy the production immensely.

The lead roles of Bugsy (Conner Limbrick), Blousey (head girl Emily Beech), Tallulah (Izzy Boxall), Dandy Dan (John Corby) and Fat Sam (Max Dorato) were played brilliantly, helped enormously by the rest of the cast with humour and bravado. The Chiltern Edge School Association ran the licensed bar during each evening with proceeds towards school projects, and a cake raffle was held for one of the house charities.

**Can't wait for next year - what will it be next time...** ■

## A big vote of thanks to our wonderful singers

**Also, our sincere thanks go to all who filled the village hall to capacity on Saturday 7 December for "Community Carols".**



Tickets and refreshments were free to visitors and the event was entirely funded by Nottakwire. The audience entered so whole-heartedly into what was a very joyful and energising evening of traditional carol singing, interspersed with individual items performed by Nottakwire and The Notts Group. Amongst music performed were Rutter's "Star Carol", "For the Beauty of the Earth" and "The Lord Bless you and Keep You". A number of less well-known musical items were also well received by an enthusiastic audience.

Festive refreshments, including mulled wine were enjoyed at the end of proceedings and patrons donated generously to our chosen charity - "Embrace the Middle East". As a response to the severe troubles of that whole area we decided to depart from our usual local giving and support this particular charity that works to serve the needs of those in the region who have been displaced, are in poverty, orphaned and are homeless and/or hungry regardless of religious belief or culture. We were fortunate to have Rev. Francis Jakeman to speak about the charity and delighted to have a final total of £500 to donate to this very needy cause.

We would like to express our gratitude to all those kind friends who, once again, stewarded and served refreshments and helped with setting out and clearing up. It is a privilege to know and work with our wonderful singers. We look forward to more fun and work next term.

Our next fund-raising event will be on 28 June 2014. Please look out for future details. ■



## Thank you from Santa

**With the kind help of local volunteer groups who turned out as Santa's elves assisting collections Goring, Woodcote & District Lions Club raised £2,748.72.**

Each volunteer group of helpers will receive a percentage of the amounts they collected towards their chosen charity project. In Sonning Common the Lions were helped by members of the Shirehall Rugby Club.

**Sonning Common – £736.00 raised**

**[www.lions-gwd.org.uk](http://www.lions-gwd.org.uk)** ■



John and Carole Lambourne would like to thank all the people who kindly donated to the Christmas Lights at 10a Kennylands Road in aid of Great Ormond Street Children's Hospital. **You raised £660.** We hope to do the same next year!

# Old and young in the village support each other...

Members of Nottakwire were delighted at the end of their singing session on 22 November to find a large selection of beautifully decorated cup-cakes awaiting them at refreshment time.

The young members of Club SC had decided to show their gratitude in a practical and most appropriate way, for money received from Nottakwire's fund-raising on three occasions. With the most recent gift of £200 presented to the Club on 12 July 2013, Club SC

purchased - among a number of other items - a cup-cake maker. The members, aided by their leaders, decided to use this to bake sufficient cup-cakes for Nottakwire members to enjoy, as a "Thank You" from them to us! We thought this was a lovely idea and thoroughly enjoyed their efforts!

We are particularly pleased that, with our continuing monetary support for the members of the Club, we have been able to establish positive links across the generations in the village. Long may this continue! ■



## Scouting – full of opportunities

I have been a Scout since 2007 when I joined the 1st Sonning Common Cub Scout pack. Scouts is the perfect opportunity to learn and do all sorts of things that you usually wouldn't get a chance to do at home or at school. As I got older I joined the 89th Reading Scout troop in Caversham, as there was no Scout troop in Sonning Common at the time. Last summer I was invested as an Explorer Scout at the age of 14 years.



## THE ADVENTURE OF A LIFETIME

In November I attended a selection camp for the World Scout Jamboree to be held in Japan in 2015. Along with 170 other applicants from Berkshire we were asked to complete team building activities, pioneering challenges and Japanese cultural activities such as calligraphy and origami. I was one of the lucky 45 who was chosen!

In July 2015 I will travel with 3500 Scouts from the UK to Japan and join 30,000 Scouts from around the world for a 10 night camp. We will take part in the peace program including a trip to Hiroshima to commemorate the 70th anniversary of the nuclear bombings in Japan. There will be activities to raise awareness of global issues including the environment, poverty, nature, health, natural disasters and human rights. Whilst there we will take part in charity events, water sports and cultural events.

The UK contingent will also have the opportunity to visit Tokyo as well as staying with a Japanese family for 5 days. I will be going with 5 other people from my district and together we will be fundraising to cover the costs of this amazing trip. We have a number of events being planned to raise money for our fees so please support us if you can. Part of the fee paid by UK Scouts goes towards funding the cost for Scouts from less fortunate countries allowing them to attend. ■

**LAURENCE MARTIN aged 14 years**

## Chiltern Edge GCSE presentation evening

**Chiltern Edge School held a presentation evening in October to celebrate the great successes in the GCSE's in 2013. Prizes and special cups were awarded to pupils.**

Headteacher Daniel Sadler said 'We were very lucky to have two special guests from the world of rowing - our very own Chiltern Edge ex pupil and Olympian Sam Townsend, along with Alex Gregory MBE who won Olympic Gold in the men's fours last year in that glorious summer of 2012.

They gave an inspirational talk about their careers in British rowing and the difficulties they overcame to achieve success in over 10 years. Sam and Alex stayed at the end of the talk, so that students could have their pictures taken with Alex's medal and were very generous with their time.' ■





# Your library needs you...



**The time has come to volunteer to support Sonning Common Library. Oxfordshire County Council (OCC) will withdraw some funding for the village library from April 2015, which will result in the staff budget being reduced.**

Although the post of library manager will continue to be funded and a member of staff will be on duty when the library is open, volunteers will be needed to support professional staff to maintain current service standards and opening hours.

The library is currently open to the community for 25 hours a week and exclusively to Sonning Common Primary School for 10.5 hours a week; this will not change. James Hazlewood, Community Library Coordinator for OCC, said: "To make this work we will need 28 hours a week of volunteer time. Based on the similar work we have done with other communities, we estimate that this could be covered by a pool of around 30 volunteers. This assumes that each volunteer would be able to cover a two to three hour session once a fortnight."

The Library Service has also confirmed that a full training package has been developed to prepare and support volunteers for the role.

Ros Varnes, chair of the Friends of Sonning Common Library, said: "We know how much residents cherish the village library from the strength of feeling there was when it was threatened with closure.

"Although it is difficult to accept cuts to the service, the changes ahead bring opportunities for residents to get more involved with shaping the local library service. We do hope that this community can work in partnership with library staff and OCC to ensure the library has a sustainable future."

The Friends of Sonning Common Library will host a meeting, supported by OCC, for anyone wishing to find out more about volunteering at the library.

**The meeting will take place in the library on Thursday, 20 March at 8pm. ■**



## Expression of interest in volunteering at Sonning Common Library...

I am interested in the following roles (please tick all that apply):

- |   |  |
|---|--|
| <input type="checkbox"/> volunteering to support staff in the library | <input type="checkbox"/> joining the Friends of Sonning Common Library |
| <input type="checkbox"/> overseeing the volunteer rota                | <input type="checkbox"/> supporting the library in another way         |
| <input type="checkbox"/> acting as the Volunteer Co-ordinator         |  |

Name: \_\_\_\_\_

Telephone number: \_\_\_\_\_

Email address: \_\_\_\_\_

Please return this form to: Rosemary Dunstan, Manager, Sonning Common Library, Grove Road, Sonning Common

## Could you become a Computer Buddy?

As well as all the other volunteers we will need in the near future, we're looking for computer literate people to be 'computer buddies' - people willing to help others with improving their computer skills. Ask in the library for more information - and let us know also if you think you would like the help of a 'computer buddy'! ■



## Get Safe online

Excellent new advice pages for parents by visiting [www.getsafeonline.org](http://www.getsafeonline.org) select 'Safeguarding Children'.

Get Safe Online has also enlisted the help of independent experts to provide free, practical advice on topical child internet safety issues, and is inviting parents to sign up to receive regular email updates.

To sign up, please visit [www.getsafeonline.org/switchedon](http://www.getsafeonline.org/switchedon) ■



# Local mountainboarder rides to victory...

Harry Jessop, a gardener from Sonning Common brought home 1st place in the Masters (30+ category) of the 2013 ATBA-UK Mountainboard Series.

Harry scooped first place in the Masters category after gaining the most points overall from the seven competitions.

*"Despite being 33, I still feel I'm improving as a rider. After competing for many years, it is a real honour to win the Andre La Roche memorial trophy which is dedicated to a great friend and rider who sadly is no longer with us."*

*This trophy represents passion and dedication to the sport and can only be won by scoring the highest points in the Masters category. I look forward to defending it next year."*

For more information about mountainboarding visit [www.mountainboarding.uk.com](http://www.mountainboarding.uk.com)

Or contact your ATBA-UK Regional Representative [southcentral@atbauk.org](mailto:southcentral@atbauk.org) ■



## Help for Mrs Tiggy Winkle?

**2013 has been a busy time for hedgehog research, particularly along the M4 corridor. Whilst we reflect on what has been achieved and look forward to what still needs to be done please spare a thought for all those hedgehogs that may be flooded with the recent rain.**

Last summer myself (Ben Williams) and Dr Phil Baker (both University of Reading), in collaboration with Dr Richard Yarnell (Nottingham Trent University) and Professor Mike Bruford (Cardiff University) began a two year research project to see if, and how much, major roads are fragmenting hedgehog populations; this work is being funded by the Peoples Trust for Endangered Species.

We asked for volunteers to send in sightings of hedgehog road kill to [hedgehogs@reading.ac.uk](mailto:hedgehogs@reading.ac.uk) so that we could go and check the location and take a sample for DNA analysis. We have managed to get 130 samples so far, a great start, but were hoping to get 1000 samples over the two year period! We are still pushing hard to get as close as possible!

I have been working at Cardiff University to try and get enough DNA from the samples to analyse and start looking to see what effect roads may be having on hedgehog populations. We hope we will be able to look at the genetic variability between populations and determine movement between them.

We still need as many people as possible to send in sightings of dead hedgehogs, this research would not be possible without the kind help of yourselves! Please do keep an eye out and send in any sightings to [hedgehogs@reading.ac.uk](mailto:hedgehogs@reading.ac.uk)

Thank you for taking the time to read and showing an interest in our research. If you have any questions please do get in contact. ■

## South Chiltern Choral Society prepares for its next performance

The South Chiltern Choral Society has commenced rehearsals for its next performance. The performance will be on Saturday 5 April 2014 at 7.30pm and it will be "THE ARMED MAN: A MASS FOR PEACE" by the great modern composer, Karl Jenkins.

The event is part of the Reading Borough Council commemoration of the start of the First World War.

Please visit the South Chiltern Choral Society website [www.southchilternchoralsociety.org.uk](http://www.southchilternchoralsociety.org.uk) to book your tickets. ■

## Free dementia training for your community!

**The Dementia Friendly Communities project is offering free, bespoke dementia training to community groups and workplace groups to help Oxfordshire's communities become dementia friendly.**

All you need to do, with our help, is get an informal group of interested people together in a local venue. We can offer help with venue costs and publicity as well as varying types of training on dementia. You can even decide which training sessions you want.

### Feedback after training:

*"I'm not fazed now when I meet people with dementia"*

*"I understand dementia much better now and what we can do together to help people affected"*

**Want to know more?** Call Emily Lewis on 01865 883488 or email [emily.lewis@oxonrcc.org.uk](mailto:emily.lewis@oxonrcc.org.uk) for more information. ■



## Advanced Kitchen & Bathroom Solutions

### **Luxury within Reach**

Free design/feasibility advice  
Entire project package inc. building/structural work, plastering, tiling, flooring & decoration.

'supply and fit' or 'fit only' service

Please call/email to arrange a site visit

**07812 998050**

**advancedprojects@btinternet.com**



LANDSCAPING (HARD OR SOFT)  
FENCING • TURFING • PATIOS • HEDGING  
WATER FEATURES

**James Watkins**

'Oak Grove' • 13 Grove Road • Sonning Common • Berkshire RG4 9RH  
Telephone: 0118 972 2659

## GIRL POWER

### Female Electrician

*Local - Honest – Reliable*

Please call Jess

**07870 507749**

for all your  
electrical needs



**PEPPARD**  
BUILDING SUPPLIES

**FIRST CHOICE FOR  
THE PROFESSIONAL**



### **\*FREE LOCAL DELIVERY**

- Competitive Trade Pricing
- Bulk Bags
- Specialist Insulation Stockists
- Indian Sandstone
- Bricks/Blocks /Aggregates
- Trade Shop
- Plenty of Parking
- Web Offers!

Call **0118 972 2028** / Sat Nav **RG4 8XA**  
Visit **www.peppardbuildingsupplies.com**

\*Terms and Conditions apply



## Byways Dental Practice

*Quality Care*

*Dedicated Team*

Byways provides friendly and professional dental care and is located in the tranquil surroundings of beautiful Checkendon village. Our services include:

- + All aspects of general dentistry
- + Teeth whitening and cosmetics
- + NHS for children & anyone in full-time education
- + Affordable payment plans
- + Flexible opening times
- + Ample free car parking

To book an appointment or for more information call us on 01491 680412 or email [info@bywaysdental.co.uk](mailto:info@bywaysdental.co.uk)



Main St, Checkendon, RG8 0SP Tel 01491 680412

## Computer Problems?

*Is your PC outdated, misbehaving, virus infected?*

Fault Diagnosis, Maintenance & Upgrades,  
Data Recovery & Migration, Virus Cleaning,  
Networking, Broadband and much more.

**Call Robin Piercey**  
at Influential Computers on

**01491 680036**

or visit [www.influentialcomputers.com](http://www.influentialcomputers.com)

**GRAHAM'S**  
**MAINTENANCE**

Painting & Decorating – Fascias & Soffits  
Door & Window Fitting – Plumbing

Fitted Bathrooms – Floor & Wall Tiling – Fencing & Decking  
Wood & Laminate Flooring – Sheds Supplied & Fitted  
Garden Maintenance – Guttering & Flat Roofing etc...



**FREE ESTIMATES 0118 972 3114**



**JL COX**  
**Plastering**

• Ceilings • Walls • Dry Lining • Rendering  
• Pebble Dashing • Patch Repair Work

Call Jamie on **01189 242861**

Or Email : [jlcox.plastering@hotmail.co.uk](mailto:jlcox.plastering@hotmail.co.uk)



**Robin James**  
OPTICIANS



- Comprehensive eye examinations
- Full contact lens service
- Free specs for children
- Extensive range of designer frames
- Main agent for Zeiss and Rodenstock lenses
- Free parking


**0118 947 2099**  
www.robinjames.co.uk  
44 Church St, Caversham, Reading (opposite Waitrose)

**BONNER LOCKSMITHS**  
**INSURANCE APPROVED**

**DOORS & WINDOW LOCKS SUPPLIED & FITTED,  
CHANGED OR UPGRADED (BS3621)**

**DOMESTIC & COMMERCIAL PREMISES  
DIGITAL LOCKS • BARS**

**FREE NO OBLIGATION QUOTE**

ALL AREAS COVERED  CALL OUT SERVICE

**01491 680216** **CRESTWELL HOUSE** **FULL MEMBER OF BRITISH LOCKSMITH INSTITUTE**

Beech Lane, RG8 0PX • Woodcote Nr. Reading  
PROPRIETOR: S. J. BONNER

# Wisepower

**ELECTRICAL CONTRACTORS LIMITED**

T. 07810 798798 / 0118 972 2767  
E. wisepower@btinternet.com  
W. wisepowerelectricalcontractors.co.uk  
4 Mullens Terrace, Chazey Heath, Reading, RG4 9ES

*Customer Satisfaction our Priority*

- Local, Reliable, Honest, Experienced Contractor
- Estd. over 30 years
- All electrical works undertaken including: new build, extensions, re-wires. outside/garden works
- Small or large works
- Test and inspect
- Fire alarms

Oxfordshire Schools and NHS Trust Approved Contractor.

**Kidbys**  
**Sheds & Timber Buildings**

Tel: 0118 972 33 80  
Kidbys Yard, 28 Kennylands Road  
Sonning Common, Reading, RG4 9JT  
www.kidbys.co.uk Fax: 0118 972 10 02

**CURTAINS,  
BLINDS, PELMETS,  
TIE BACKS ETC.**

**ALL AT COMPETITIVE  
PRICES**

**CALL CAROLINE ON  
0118 954 2448  
OR  
0781 561 0007**

*Time 4 Pilates* 

Want to look and feel great!!  
Try Pilates – controlled, yet gentle exercise

Classes in Sonning Common area  
Including Ante and Post Natal

Mondays / Tuesdays / Thursdays  
Beginners and Intermediates  
Max 12 in Group (6 in Pregnancy classes)  
Private sessions also available

**Christine Brook** – Member of Body Control Pilates® Association  
Ring 07789 717017 or email [chris@time4pilates.co.uk](mailto:chris@time4pilates.co.uk)  
Website at [www.time4pilates.co.uk](http://www.time4pilates.co.uk)

**VILLAGE BARBERS**

**0118 972 3930**  
**24 PEPPARD ROAD  
SONNING COMMON**

**10% OFF WITH THIS VOUCHER  
CHILDREN'S PLAYROOM**

CUT - £12 ONE GRADE - £9 TWO GRADES - £10  
CUT & BLOW DRY - £13 CHILDREN UNDER 10 - £9  
CHILDREN 10 TO 16 - £11  
SENIOR CITIZEN - £8 RESTYLE - £15



# Annual Village Quiz

(Under New Management)

**Friday 21 March 2014**

At Sonning Common Primary School  
Grove Road, Sonning Common

**START 7.30pm**

Teams of up to 6 players (limited to 22 teams)

Entry Fee: £10 per team

Any profits will go to the school PTA

Entries to Mel White c/o Sonning Common Library,  
**01189 722448** or **melanie444white@hotmail.co.uk**

**BAR AVAILABLE + PARKING PLENTIFUL**



## BACKSTAGE, FRONT OF HOUSE AND ACTORS NEEDED...

Thursdays from 9 January 7.30pm  
Christ the King Church Hall

(Spring production 9 to 12 April 2014  
at Peppard Memorial Hall)

## PLAY READINGS

Wednesday 22 January and 5 March  
Reformation pub at 8pm

Buy a drink and join in

Phone Jenny on **0118 972 4705**  
for further details.



## Volunteer marshalls needed for this year's On Your Bike!

**Sunday 27th April 2014**

email: [rdixon21@yahoo.co.uk](mailto:rdixon21@yahoo.co.uk)  
[www.onyourbikesonningcommon.co.uk](http://www.onyourbikesonningcommon.co.uk)

**[ADVANCE  
NOTICE]**



The FISH Office will be operating  
from its new premises in

**THE OLD SURGERY**  
(at junction of Kennylands Road  
& Wood Lane)

as from Monday 17 March  
(look out for the moving posters)

## Rhymetimes

Rhymetimes for pre-school children  
**1st and 3rd Mondays of each  
month**  
10am – 10.30am in the library

## STORYTIMES

**Every Saturday at 10am**

Stories aimed at 3 - 7 year olds

Younger/older children welcome if they are interested

'Special storytimes', for slightly older children

Craft activities plus colouring

LOOK out for dates



## PEPPARD BOWLS CLUB

**Taster Days**

Saturday 19 April and Sunday 27 April  
at 2.30pm

Green at rear of Peppard War Memorial Hall  
Gallowstree Road, Peppard RG9 5JA

Bring your flat-soled shoes and give it a try.  
Refreshments and a warm welcome await.

For more information please phone **0118 924 2617**



## URGENTLY REQUIRED

### Booking Clerk for Sonning Common Village Hall

Unique opportunity to be involved with a friendly and go-ahead village hall.

You need to be computer literate, a skilled communicator and work flexible hours on your own initiative from home, with the support of the management committee.

A designated mobile 'phone is provided.

This position offers an honorarium commensurate with other local village halls.

Applications to: [scvh@btinternet.com](mailto:scvh@btinternet.com)

## QUEST FOR POLISH DESCENDANTS!

Did you or your relatives live at Kingwood Camp in the 1950's?

I am working on a book of memories of people about Kingwood Common and Peppard Common from 1939 to the present day.

It would be great to hear from anyone who is Polish and was also living there.

Please contact me by email [suenickson@chilternantiques.com](mailto:suenickson@chilternantiques.com) or phone 0118 972 4520

## National Libraries Day Saturday 8 February

A day to celebrate all libraries in this country (unfortunately a dwindling number)

Special children's storytime at 10 o'clock in the library

Book-related craft activities for under-10s

Home-made cakes and drinks will be on sale

## Knit & Natter

Would anyone be interested in starting up such a group?

Meet in the library on a regular basis?

If so, talk to the library staff

## SCRABBLE CLUB

LIBRARY

7 February & 7 March / 10 to 12 noon

NO CHARGE

All ages and abilities welcome!

Drinks and biscuits provided

## JIGSAW EXCHANGE

Adult jigsaws (1000 pieces)

Available to borrow in the library

FREE

A few children's jigsaws too

## VILLAGE COFFEE MORNINGS

\*\*\*\*\*

### Book Stall and Bric-A-Brac Table

Supporting local community projects

SONNING COMMON VILLAGE HALL

Forthcoming dates:

Wednesday 5 February 2014 &

Monday 3 March 2014

10.30am - 12pm

This event is open to everyone in the village

**FREE ENTRY**

Coffee/Tea

(small donation appreciated)

Hosted by Sonning Common  
Women's Institute



# Call My Driver

**Friendly & Reliable  
Taxi Service**

Based in Sonning Common

**07796 688477**

## T.C. FULLER PLUMBING & HEATING

- Installation • Maintenance • Service • Repair
- Boiler replacement, heating system upgrade & adaptations, power flush.
- Hot water cylinder replacement.
- All plumbing work undertaken.
- Bath/Shower rooms, water softeners-salt supplied.
- No call out charge • Free estimates • Fully insured

Tel: 0118 9724097  
Mob: 07800 914 880



## Shaun Guard TV AERIAL SERVICES

- **Poor Reception Solved** - Aerials repaired & supplied
- **TVs** - Hung on your wall for you. Also supplied & tuned
- **Extra TV Points** - For aerial and Sky (In HD!)
- **Sky TV** - Also Foreign Language TV

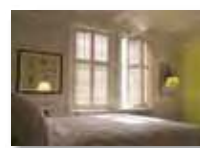
Call **Henley-on Thames 01491 699114**

A part of  **OXFORD AERIALS**

SB

## SMART BLINDS & SHUTTERS LTD

*Perfection by Design*



Family run business that cares    Fantastic range of samples  
All made to your exact needs    Free quotation & fitting

*Why are we so different? Because we love what we do!*

Showroom: 118 Henley Road, Caversham, RG4 6DH

☎ 0118 950 9449

[www.smartblinds.org](http://www.smartblinds.org)

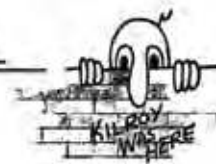
**Family Hairdressing**  
**any age & any style**

*.....and all in the comfort of your  
own home.....*

Ring Maureen on  
**0118 972 1074**

## DK Builders

Daren Kilroy



BRICKLAYING, EXTENSIONS,  
GARDEN WALLS, PATIOS ETC



OVER 20 YEARS EXPERIENCE

CAVERSHAM, READING    07951736745  
0118 3759407

## Mr FixiT

### Repairs & Maintenance for almost anything!

All building maintenance and repairs, interior / exterior.  
Decorating, Floor / Wall Tiling, Plumbing, Electrical,  
Woodwork, Glazing.

Specialist Paint Effects and sympathetic restoration  
for older properties.

Kitchens, Bathrooms and Conservatories refurbished.

Landscaping, Patios, Water Features, Fencing,  
Hedge and Tree Cutting.

Sheds and outbuildings repairs and maintenance

No Call-Out Fee and Free Estimates

**07752 759908**



[gunningplumbing.com](http://gunningplumbing.com)

• plumbing • heating • gas •

**ALL DOMESTIC PLUMBING, HEATING, & GAS WORK  
INSTALLATIONS, REPAIRS, & EMERGENCIES**

**CAVERSHAM BASED  
GAS SAFE REGISTERED ENGINEER  
SERVING READING & THE SURROUNDING AREA**

CALL ANDREW ON 07815 304 931

[www.gunningplumbing.com](http://www.gunningplumbing.com)





# Sonning Common

## PARISH COUNCIL NEWS... focus on finance

### From the Chairman of the Parish Council

"We are acutely aware of our responsibility to use your money carefully. Over 95% of our income arrives through the parish precept that forms a small part of your total Council Tax Demand. In the year to the end of March our precept was £82,500 or £53.75 per Band D home and it funded the four areas – cleanliness and tidiness, facilities, projects and administration - described below. We have carefully evaluated all the things that we have to do in 2014/15 to maintain and enhance village services and amenities and have set a new precept of £99,000 to make this possible. At £1.23 per week for a Band D home we hope you will see this as a fair price to pay for our services. To see the full budget behind this precept please go to our website: [www.sonningcommonparishcouncil.org.uk](http://www.sonningcommonparishcouncil.org.uk). A copy is available for viewing in the parish office". ■

**COUNCILLOR DOUGLAS KEDGE, CHAIRMAN SPCPC**

### Cleanliness and tidiness

Cleanliness and tidiness is the work of street cleaning, grass verge cutting, maintaining footpaths, hedges and fences, providing litter bins and dog bins as well as looking after bus shelters and seats. We also fund the work of our unique volunteer Snow Team. Next year all this will cost £21,800. ■

### Facilities

Facilities describe what we do to provide and maintain our three children's play areas, the allotments, Widmore Pond and the CCTV around the village hall. We have set aside £15,000 for the first phase of improvements to the village hall by upgrading the thermal and acoustic insulation. We deal with the effects of the small amount of graffiti and vandalism that we experience. We support the excellent work of the Village Gardeners and also make small grants to other causes. All this will cost £29,100. ■

### Comparison

This table shows how our precept compares with that of other large villages in South Oxfordshire.

Village	Tax base (no. of properties)	Precept for 2014/15
Benson	1,691	115,972
Wheatley	1,610	100,000
Sonning Common	1,549	99,000
Cholsey	1,426	94,020
Goring	1,698	85,713

### Projects

Projects cover those areas where we make specific expenditures that benefit our residents and safeguard the future of the village. Here is where we provide a grant of £8,000 that keeps the Club SC (Youth Club) going. During the year we will be completing our Neighbourhood Development Plan (NDP) to ensure that the 138 new homes to be built between now and 2027 are of the type and in the places that best suit our community. We expect that we will soon have the £85,755 needed to build the new skatepark at Bishopswood plus a mini one for smaller children inside a play area. We also have to hold a reserve fund to deal with the unexpected. For all this we have budgeted £21,500. ■



### Administration

Administration is the cost of running the parish council and its committees as professionally as we can. Our friendly Parish Office handles hundreds of phone calls, emails, enquiries and visits from residents as well as from all the other organisations that we have to deal with. We receive and review every planning application made in the village and in some cases we have to support appeals about them. All this will cost £48,395. ■

### CONTACTING THE PARISH COUNCIL

For all matters please contact Philip Collings, Parish Clerk on 0118 972 3616 or email [clerk@sonningcommonparishcouncil.org.uk](mailto:clerk@sonningcommonparishcouncil.org.uk)  
This page has been paid for by the Parish Council.

The sign of our success  
in Sonning Common



1 Church Road Caversham  
Reading RG4 7AA  
0118 946 2121

**BRIDGES**  
Independent Estate Agents

Jefferys Consultancy Services Ltd.  
Accountancy Services

**An Accountant That Will Save You Time  
& Paper Work**

Excellent customer service & free initial consultation

- Self-Assessments
- Corporation Tax Returns
- Business Advice
- Accounts

Call: 0118 9722611  
Email: Keith.Jefferys@jcslimited.co.uk

## CERAMIC WALL & FLOOR TILING

Adhesive / Grout / Trims Supplied  
Floor Levelling & Plastering  
Free Estimates & Advice

Call Mick 0118 901 1777 / Mobile: 07841 586003

## COLLINS, DRYLAND & THOROWGOOD LLP SOLICITORS

12 Hart Street Henley-on-Thames RG9 2AU

Please contact Mrs Wendy Holmes  
(formerly of our Sonning Common Office)

Telephone: 01491 572323

email: [wendyholmes@collins-dryland.co.uk](mailto:wendyholmes@collins-dryland.co.uk)

## THAMES VALLEY GYMNASTICS CLUB

Bird Wood Court  
Peppard Road  
Sonning Common

(Registered Charity No. 1062939)



- ◆ Modern Gymnastics facility with "state of the art" equipment and dance studio
- ◆ Elite/Competitive squad coaching to Regional/National levels
- ◆ General Gymnastics classes for Boys/Girls – all ages/abilities
- ◆ Pre-School programmes
- ◆ Ballet Classes
- ◆ Play Gym for the Under 5s (Tuesday & Thursday a.m.)
- ◆ Gym Birthday Parties
- ◆ Room for hire

*For further information, please call in or telephone  
Kevin Cassidy, Club Manager, on 0118 972 4401*

## HEIGHTS Tree Care

- All Aspects of Tree Work
- Hedge Cutting
- Private and Commercial

Fully Qualified Professionals

£5 Million Public Liability Insurance

Laurence Williams

Phone: 0118 9484274

Mobile: 07813 586 735

Email: [info@heightstrecare.co.uk](mailto:info@heightstrecare.co.uk)

Web Site: [www.heightstrecare.co.uk](http://www.heightstrecare.co.uk)



## Stafford & Son

Local Garden & Building  
Maintenance Services

Offering services in all aspects of garden and grounds maintenance, be it large or small, including hedge and tree work.

Fencing, landscaping, pressure washing and general ground works.

Interior and exterior building maintenance, including gutter repairs / clearing and handy man services.



Andrew Stafford

Phone: 01491 642 191

Mob: 07899 980 137

## PODIATRY CLINIC

Professional treatment & advice for your feet

Contact

**Heidi Snookes-Owen**

**PODIATRIST/CHIROPODIST**

B.Sc., D.Pod.M., S.R.Ch., M.Ch.S.

HPC REGISTERED

**0118 972 4742**



# The Neighbourhood Development Plan (NDP) for Sonning Common

## AN INTRODUCTION

By Ros Varnes



### Current government policy dictates that Sonning Common must accommodate 138 additional homes.

While this is good news for people wishing to move to or within the village, other residents will be concerned about the resulting squeeze on village services and amenities together with increased traffic volumes.

South Oxfordshire District Council (SODC) currently makes the majority of local planning decisions, in consultation with parish councils and Oxfordshire County Council (OCC). Individuals can influence the process by commenting on specific planning applications or by participating in public consultation exercises, when held.

However, the Localism Act of 2011 allows residents to have much greater control over designing planning policies for their communities, if they choose to establish a Neighbourhood Development Plan (NDP).

Such plans - which have to be fully consulted on and agreed by the local population - provide a framework for the residential,

employment and recreational development of an area until 2027. And once a plan is approved, all future planning decisions must be taken with reference to the NDP.

In consultation with residents, the NDP working party (NDPWP) intends to develop a plan which will provide a sustainable future for Sonning Common and be in the best interests of the village and its population as a whole, while meeting government requirements for more new homes.

A shortlist of sites has been identified for potential development, as detailed overleaf.

Getting to this stage has involved hundreds of hours of effort by the working party and the many residents who have provided feedback at the nine public consultation events held so far as well as by completing surveys and other research.

Barrie Greenwood, chair of the NDPWP, said: "For the plan to be credible and successful it needs the support of the village community. Please do participate in the process by attending future public consultation events and by voting in the referendum when the plan is eventually put to the village." ■

# NDP for Sonning Common

## SON SITE STATUS REPORT

All the sites taken for development will increase the number of houses in the village and the traffic on the Peppard and Kennylands Roads as well as Reades Lane. However the requirement is for 138 homes and our allocation by SODC was based on 1916 houses, of which 321 are in Rotherfield Peppard.

### Old Copse Field SON 1

**Description:** A 7.8-hectare arable site adjacent to Old Copse wood.

**Status:** Available. Short-listed for inclusion in the Neighbourhood Development Plan (NDP). Recommended for use as an amenity green space with a proposed (pedestrian) access from Woodlands Road

### Bishopswood Middle Field SON 2

**Description:** A 3.3-hectare arable site, off Lambourne Road, between Old Copse Field and Memorial Hall Field.

**Status:** Available. Short-listed for inclusion in the NDP for housing. The proposed traffic access would be from Reades Lane.

### Memorial Hall Field SON 3

**Description:** A 5.3-hectare arable site between Bishopswood Middle Field and Reades Lane.

**Status:** Available. Short-listed for inclusion in the NDP. Recommended as a possible site for sport/community use only. The proposed access would be from Reades Lane.

### Chiltern Edge Top Field SON 15a

**Description:** A 2.2-hectare playing field belonging to Chiltern Edge School on Reades Lane.

**Status:** Available. Short-listed for inclusion in the NDP for housing development with a proposed access from Reades Lane.

### Chiltern Edge Lower Field SON 15b

**Description:** A 3-hectare playing field belonging to Chiltern Edge School on Reades Lane.

**Status:** Available but not short-listed for inclusion in the NDP.

### Kidmore End Valley Field SON 4

**Description:** A 6 hectare arable site behind existing residential development on the Kennylands Road.

**Status:** Not available – withdrawn by the landowner.

### Kennylands Paddock SON 5

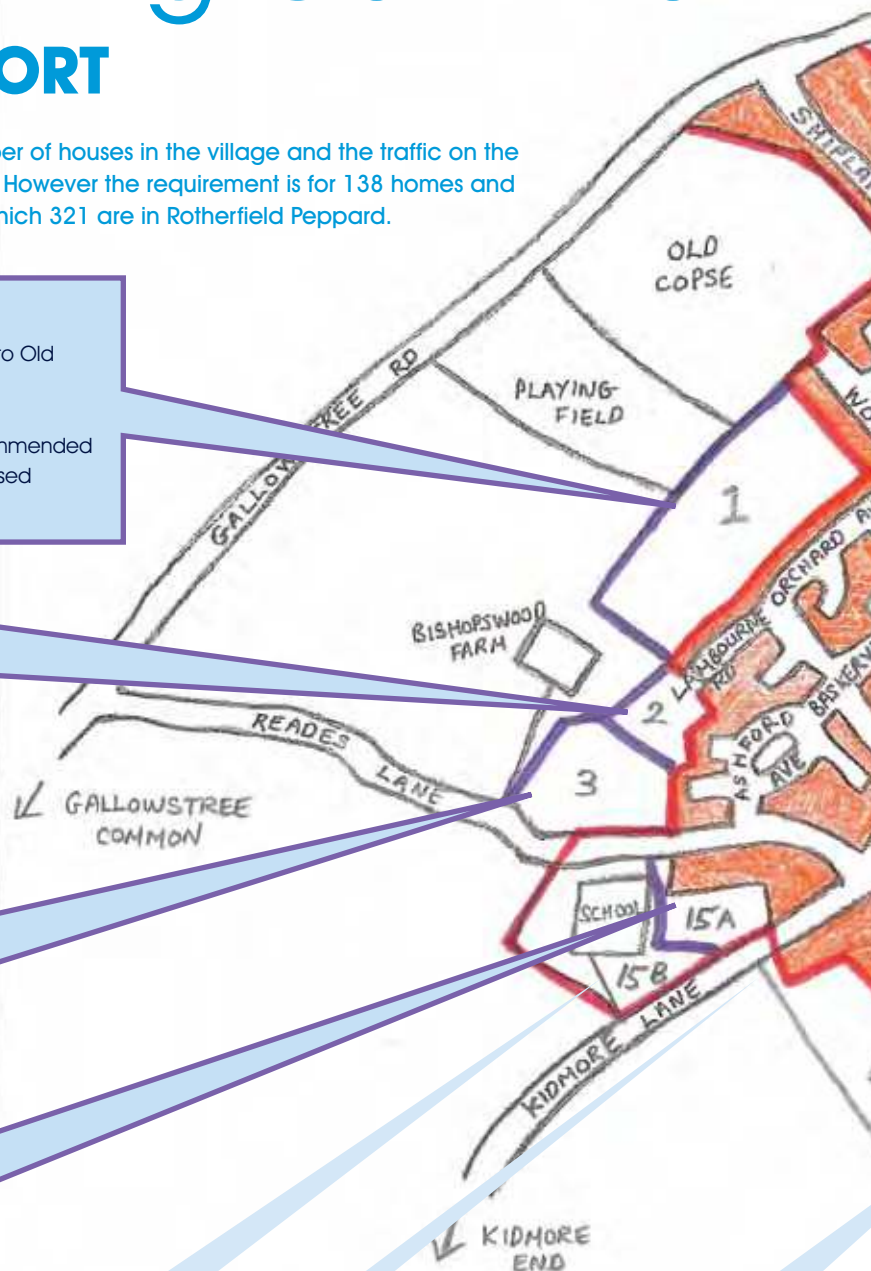
**Description:** A 1.9 hectare paddock, currently used for grazing/stabling ponies.

**Status:** Available. Not short-listed for inclusion in the NDP.

### Kennylands Road In-fill SON 6

**Description:** A 2.1 hectare arable site on the Kennylands Road.

**Status:** Available. Short-listed for inclusion in the NDP. It is proposed to use a 1.6-hectare portion of this site only for a ribbon development of new houses to fill in the area between 56 and 80 Kennylands Road. The proposed access would be onto the Kennylands Road.





### Blounts Court Road SON 13

**Description:** A 4.7-hectare piece of arable land on the Blounts Court Road.  
**Status:** Not available - withdrawn by the landowner.

### Widmore Heights Son 14

**Description:** A 0.8-hectare arable site on Widmore Lane.  
**Status:** Not available - withdrawn by the landowner.

### Blackmore Rise SON 12

**Description:** A 2.3-hectare piece of arable land on the Peppard Road, near the junction with Blackmore Lane.  
**Status:** Available but not short-listed for inclusion in the NDP because of its high-quality AONB status.

### Peppard Road In-fill SON 11

**Description:** A 1-hectare piece of arable land on the Peppard Road, near the junction with Blackmore Lane.  
**Status:** Available but not short-listed for inclusion in the NDP because of its high-quality AONB status, as advised by a Chilterns conservation officer.

### Young Wood Valley Field SON 10

**Description:** A 5.3-hectare arable site, opposite the Herb Centre, on the Peppard Road.  
**Status:** Available but not short-listed for inclusion in the NDP. A Chilterns conservation officer has advised the NDP working party that this "iconic" piece of AONB would not be suitable for development.

### Lea Meadow SON 9

**Description:** A 3.2-hectare paddock adjacent to the Herb Centre.

**Status:** Available. Short-listed for inclusion in the NDP for housing development with a proposed access from the Peppard Road.

### Thames Valley Gym SON 8

**Description:** A 0.8-hectare site housing the Thames Valley Gymnastics Club.

**Status:** Available. Short-listed for inclusion in the NDP. It is recommended that the site remains as the Thames Valley Gym.

### Hagpits SON 7

**Description:** A 1.9-hectare brown field site containing a house with an adjoining paddock.

**Status:** Available. Shortlisted for inclusion in the NDP for housing. The proposed access would be from the Kennylands Road.



#### Map key

- Chilterns Area of Outstanding Natural Beauty (AONB) boundary
- Sites short-listed for inclusion in the Neighbourhood Development Plan (NDP)
- The current built area of Sonning Common

# The Neighbourhood Development Plan (NDP) for Sonning Common

'Progress So Far' was the theme of another public information day held on 16 November 2013. The extensive display board exhibition in the village hall showed the phases through which the NDP Working Party (NDPWP) has progressed.

## Phase 1

Described how the NDPWP evolved and the publicity, via the Sonning Common (SC) Magazine, to recruit additional members. An outline description of 'What is an NDP', the formal letter to South Oxfordshire District Council (SODC), giving notification of the Parish Council's intention to complete an NDP and the draft VISION statement expressing 'What the village will look like in 2027'.

## Phase 2

170 people attended the first public meeting on 28 April 2012 (Design Day 1). The primary purpose was to make residents aware of the 14 sites identified by SODC as possible development sites and the homes to be built. The NDP's external consultant was also introduced. Two further meetings were held in June and July (Design Days 2 and 3) inviting

residents to complete Site Assessment, Village Character and Landscape Setting surveys.



## Phase 3

15 September 2012 a 'drop in' session was held to gain feedback from visitors about the regeneration of the Village Centre and to update residents about the completed surveys. (By mid-2013 over 200 surveys, many with accompanying photographs had been completed. Site surveys were collated and summarised into a template and the findings subsequently validated and presented at various public information meetings and in the SC magazine.)

## Phase 4

During the final 3 months of 2012 information gathering was the working party's key focus. The draft VISION statement was circulated to 2,000 homes with feedback requested. The ORCC Housing survey was completed by 24% of residents and a Business survey conducted. Each of these has informed the decisions

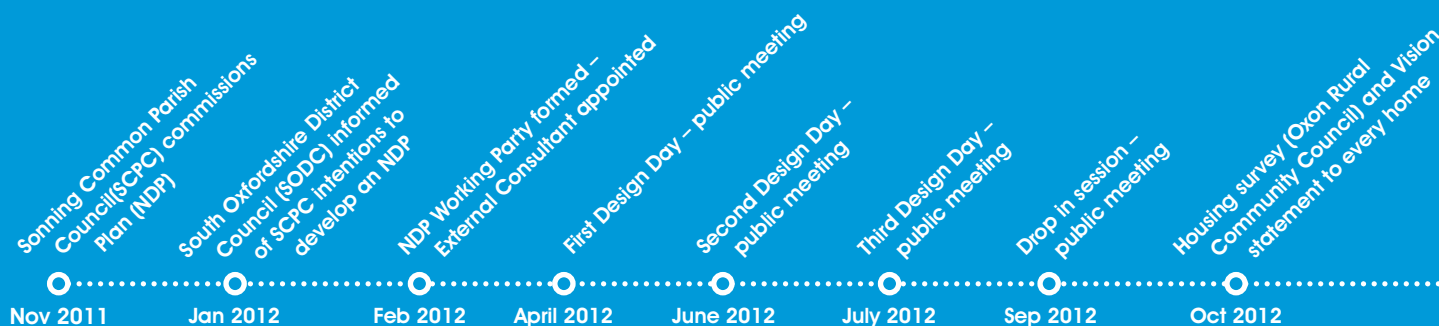
about housing mix and needs for offices. The Traffic Survey Task group was established and subsequently published its interim report in July 2013. Consultants were employed to report on the data collected via the Village Character and Landscape Setting surveys and to undertake further work on traffic concerns.

## Phase 5

The 7 (pm) and 9 February (am) 2013 public meetings were headlined 'Decision Time.' Three presentations by NDPWP members (identical scripts for each meeting) provided a detailed analysis of the 14 summaries taken from villagers' Site Assessment surveys, and introduced the criteria based 'traffic light' system. Additionally, two AUDIT sessions were held to validate the 'traffic light' conclusions, undertaken by residents the audit was managed independently by consultants. Feedback from attendees and the audit groups was examined and modifications included in the final conclusions subsequently published in the SC magazine.

## Phase 6

Throughout these phases, consultation has been taking place with Rotherfield Peppard (RPPC) and Kidmore End (KEPC) Parish Councils as SON 13 and SON 4 lie respectively within their boundaries. In Spring 2013 Chiltern Edge School Governors submitted a request to





SODC that part of the school site should be considered for housing development. This site (SONs 15a and 15b) falls within the KEPC boundary. Agreement has been reached with both parish councils to include SONs 4, 13 and 15 within the SCNDP designation area.

The NDPWP held consultations with landowners and agents and at this point SONs 4, 13, and 14 were withdrawn by their owners. During



informal talks with Chiltern Conservation board about the sites in the Area of Outstanding Natural Beauty (AONB), it was made clear to the NDPWP that SONs 10, 11 and 12 should not be developed for the homes that SCNDP are required by law to have built. The SCNDP website was constructed to give access to the NDP information and went live in June 2013. [www.scpcc-ndp.co.uk](http://www.scpcc-ndp.co.uk)

## Phase 7

The public meeting of 19 July 2013 fed back the site survey information collected by residents on SONs 15a and 15b. An audit process for these sites was undertaken on 27 June. A comprehensive matrix was shared with attendees to this meeting, suggesting nine possible options across the remaining sites to accommodate homes, offices, amenity



green space, and a sports/community hall. The subsequent written feedback resulted in three possible options being taken forward for further consideration.

## Phase 8

The NDP consultants have completed Site Concept Statements, showing buffer screening, wildlife corridors, open space, pedestrian links, structured planting and access in respect of SONs 1, 2, 3, 6 (part), 7, 9, and 15a. All of these sites are potentially available for development. The choice of smaller sites was the view of residents in the SC Community Survey (2010), rather than large estates. Sustainability is another criteria which NDPWP has to consider and this is about maintaining shops, transport and services and the sites at the top of the village, being so close to the centre, within walking distance would meet this requirement. Although SONs 1,2 and 3 are in the AONB, we are seeking an agreement with the landowner that we prepare for consideration, the proposal that SON 1 becomes amenity green space (to

mirror the Millennium Green), SON 2 for homes to be built and SON 3 to facilitate a sports/ community hall with shared use by Chiltern Edge school.

## Phase 9

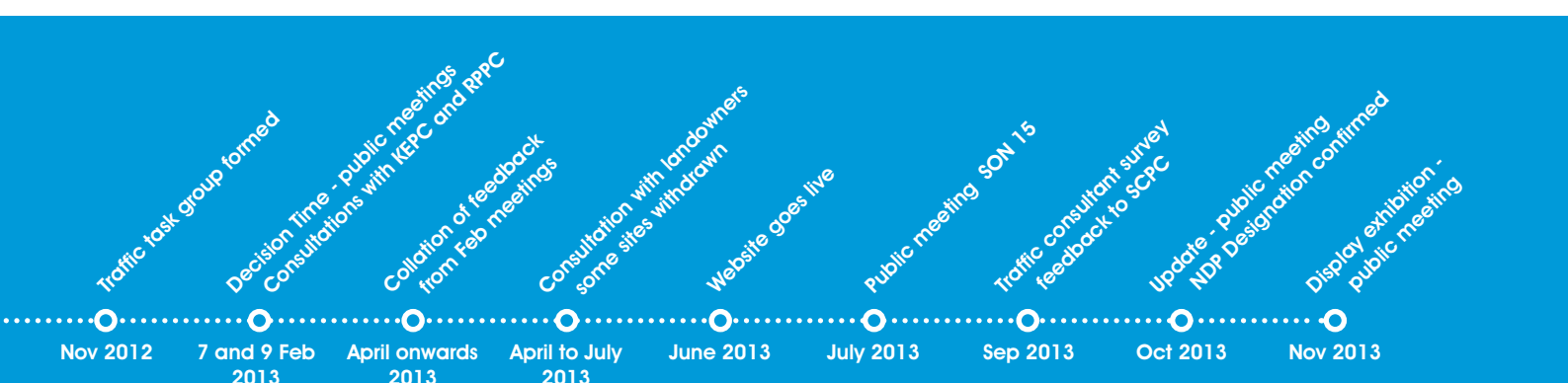
The public meeting of 11 October 2013 focussed on three important topics; Traffic & Parking, the Character of Sonning Common village and the options selected by residents for the location of future homes and associated facilities. The map shows the Built lines limit around the village.

On 25 October 2013, the SCPC was advised that SODC has formally designated the SC Neighbourhood area.



## Final phase

The write-up of the final Neighbourhood Development Plan, consultations with residents, submission to SODC and the Examiner will take 45 weeks. It is hoped that the referendum will take place in March 2015. ■



# The Fish Tale

in the last six months a new bus, a new computer and now a new office

When Ann Butler-Smith first had the idea of starting a volunteer organisation in the community back in 1978 little did she know that the Fish Volunteer Centre would expand so well until it outgrew the office which it had moved into two years later. Yes, it must have been amazing then to actually have a proper office in which to operate this new charity.

We have now been in this little office at the rear of Sonning Common Village Hall for 32 years and it is certainly time to move. The office staff, frequently work under great pressure, the phone seems to ring constantly and there are always lots of folk popping in and out.

I am sure many local residents will know the old doctor's surgery at Dr Hemphill's house. Well that is where FISH is moving to, on the corner of Wood Lane and Kennylands Road. A charity called Blindcare has occupied it for the last 18 years and at three hundred and seventy five square feet it is nearly four times the size of our old office! There are two good sized rooms and a kitchenette which are just right for locals to drop in and have a

cup of tea and a chat. We will need some volunteers to help us with that!

Mary Norris our new office manager I know has plenty of fresh ideas to implement in the coming months and we now have a computer to help us get up to date. This was generously supplied by the Lions Club of Henley complete with some software. What FISH manages to do in the community is amazing but is only possible because of the wonderful volunteers who give their time, but you know what I am going to say. Yes, we need more volunteers, car drivers (there is a mileage allowance) office staff and other helpers, mini bus drivers and home visitors. Please get in touch if you can help. There are always people out there who we have yet to reach.

What next you may ask? Well, when we have settled into the new premises and sorted out all those little problems that crop up when you move and recruited some more volunteers along the way, then we will start looking forward. For example we are often asked to run errands for the housebound. Perhaps creating a Friends of FISH Club for a small membership fee to help boost funds,

and encouraging people to leave FISH a legacy in their wills to help with the work we do. A newsletter is also on the list for the near future, maybe twice a year to keep everybody up to date with what is going on. During the last year we have asked people to donate any unwanted jewellery, silver and gold items as we have good connections in Hatton Garden. This has already raised many hundreds of pounds for our funds. We hope to expand this even more.

FISH is looking to a bright future in the coming years.

**FRED NICKSON Chairman FVC**  
**0118 972 4520 / 07768 918501**  
**[chairman@fishvolunteercentre.co.uk](mailto:chairman@fishvolunteercentre.co.uk)**



## Have Bus – Will

After seven years good service, an average of 1600 passenger journeys each year and with some 47,000 miles on the clock the committee decided it was time to seek a replacement for the now familiar yellow minibus. That total number of miles may not sound a lot for a modern engine but the FISH Bus does strenuous work with many relatively short journeys, with many starts and stops. In any event the repair bills were on the increase and to make the most of any resale value this seemed an appropriate time to seek a replacement.

The decision having been made it took seven months almost to the day to acquire an IVECO Minibus and have the base vehicle converted to the desired specifications. The new Blue Bus has now been in operation for nearly three months and has proved a success with passengers and drivers alike. With the upholstered seating, separate saloon heating, air suspension and easy access steps with hand rails all making for a much more comfortable journey experience.

With the new bus we are looking at new horizons. The regular shopping trips to Henley and Reading continue with monthly visits to

other local market and shopping venues. The programme for leisure and social trips includes monthly mystery tea tours, pub lunches and visits to National Trust houses and gardens. We are always looking to expand the range of interesting and entertaining excursions and recent trips to Bath Assembly Rooms, Kew Gardens, London Zoo and a London Christmas lights tour proved very popular.

The schedule of trips and visits is published, distributed and posted on community noticeboards some ten days before the start of each month and bookings taken by telephone or in person at the FISH Office. With



# The new FISH office co-ordinator – **SHE VOLUNTEERED WILL YOU?**

"So now you have retired and moved area you are probably looking for something to do," said my friend Sheila. Well, no I wasn't really, but was curious to know what she had in mind. Her answer was FISH. I had no idea what she was talking about. She told me it was a charity based in Sonning Common, which had been going for more than 30 years, which was all about local people helping other local people. It is mostly a transportation charity, assisting people to get to medical and other appointments, which they were unable to attend without help. The office is staffed weekdays from 9.30am to 11.30am. Usually there are two volunteers on duty, who do one morning each on alternate weeks. They take the enquiries and contact the drivers. But what FISH needed now was a new volunteer co-ordinator. I spoke to the retiring co-ordinator and it didn't sound too onerous. So I thought I would give it a go.

Everyone who works for FISH is a volunteer, and what a wonderful bunch they are. Quite a few of the clients we are helping now were part of the original team, who

set up the charity. It is lovely that we can now help them. We have a fantastic group of willing drivers who can get a call any morning asking if they can take someone, somewhere. We know that everyone has a life, so there is no pressure. If they have the time we are always grateful and if they can't help on a particular occasion, we understand and will call again. So many of the drivers say that they meet wonderful people through driving for us, and each one has an interesting story to tell.

We have about 40 people registered as drivers, but just recently we have had several retire or move from the area. We are always looking to recruit new drivers. Just an hour or two occasionally can be a big help. We are a very well used service and to be able to help as many people as possible, we now need some new blood.

We have grown and expanded and as you will read in other articles regarding FISH, we are moving to bigger premises. We would also like to recruit someone with either Marketing or Fund Raising experience who could help us with our expansion.

We also have a new 16 seat bus that is out almost every day of the week, taking

people on shopping trips, or to National Trust properties, mystery tea trips, pub lunches plus many others. Again each of our 10 or so bus drivers is a volunteer. John, our Bus Manager trains each one and comes up with the monthly time table for all the trips.

I love being part of such a local charity and helping to make life easier and more enjoyable for other local people.

This is such a worthwhile charity, so if you have some spare time on your hands, do pop into the office, in the village hall for the moment, and find out what you could do to help. ■

**MARY NORRIS Office Co-ordinator**



## Travel

a new FISH website under development it is planned to use this as another way to view (and maybe eventually make bookings onto) the planned trips.

So who can use the bus – well the simple answer is our 'community'. Many trips, particularly the shopping runs, are arranged predominantly for those of retirement age who cannot easily access their own transport.

Others provide an opportunity for socialising in different environments or accessing places and events which can stimulate and entertain. 'Seniors' remain the primary focus of the

service but the bus is a community resource and we are looking for new ways to fully use it as such. ■

**JOHN PEARMAN Bus Manager**





## Take time to help your NHS this winter

If you become ill or suffer an injury, take two minutes to decide which NHS service is most appropriate for your needs.

- **YOUR FIRST AID KIT** – for bruises, grazes, sore throats, colds, coughs, minor cuts, hangovers, and indigestion can be effectively treated yourself
- **PHARMACIES** – for diarrhoea, a minor infection, headache, tummy upset, an insect bite or sting, a cough, a cold or even if you want travel advice
- **GP SURGERIES** – if you have persistent symptoms then your GP is the right choice
- **111** – This is the free, 24 hour a day, 365 day a year NHS advice line.
- **MINOR INJURIES UNITS (MIUS)** – these centres can often treat deep cuts, eye injuries, broken bones, sprains, minor burns and scalds. Our local one is at Townlands, Henley
- **999 ACCIDENT AND EMERGENCY/EMERGENCY DEPARTMENT (ED)** – This is ONLY for genuine emergencies e.g. Life threatening conditions such as severe chest pains, breathing difficulties, choking, and serious bleeding injuries.

## Christmas Day lunch THANK YOU

Jill Vallis and I would like to thank all our helpers and guests who joined us for Christmas Day Lunch in the Sonning Common Village Hall. This event which attracts 50 people is in its 5th year and we know it is looked forward to by many Sonning Common residents.

We also wish to thank Tesco, Waitrose, Robin Swift, Chiltern Edge Community Association, the Henley Lions Club and the local CCA charity shop, all of whom helped us in various ways. A very special thanks goes to Paul Bailey who with Jill Vallis's assistance hand-made all the decorations in the village hall from recycled materials and set a very high standard. Paul already has some ambitious plans up his sleeve for next year!

If you did not know about our special Christmas Day lunch and would like to come next year, please make a note in your diary and contact me nearer the time. It is open to anyone who is on their own or couples who cannot face cooking turkey for two and would like some company. Thank you ■

**CHRISSIE PHILLIPS-TILBURY**

**0118 972 1058 [phillipstilbury@gmail.com](mailto:phillipstilbury@gmail.com)**

## Bumper apple harvest

We have one very large Bramley apple tree in our back garden. This last summer it has been over laden with delicious cooking apples. Coming from a generation that was taught 'Waste not, want not' I have taken a wheelbarrow of Bramleys, placing it outside the Village Hall. To date I have taken 58 wheelbarrows full to the brim with apples!! I hope you have enjoyed them? ■

**BARBARA BUTLER 50 Wood Lane**

# Tom Fort

## TOO FAT

**The news on the bathroom scales front is grim but not yet critical. Fifteen stone twelve pounds, the machine says and – unfortunately – the machine does not lie.**

A long time ago I was a fit and lean thirteen-and-a-half stone person. Later I became reconciled to fourteen stone, then – after some more time – fifteen. For a while I completely lost touch with my weight – until, two Christmases ago, I got the scales as a present. I got on the machine. I got off it and gave it a shake, checked settings, got on again. There was no mistake: sixteen stone four pounds. I felt faint, and huge.

A couple of months later, after some serious self-denial, I was fifteen four, and I kept it there or thereabouts until fairly recently when I began to notice a certain tightness around the waistband again.

Personally I blame Christmas. It's not so much the dinner itself, and the lunches and dinners that precede it and follow it. It's the accessories, the extras that constitute such an appalling temptation to someone as weak-willed as myself. As I write this, several boxes of chocolates and fudge and a bag of home-made mints have been disposed of, and significant inroads have been made into the bags of truffles and the very large amount of cheese and double cream.



However, much chocolate remains, as does at least one more box of fudge, another of smart chocolates and four unopened bags of salted nuts. Most of the Christmas cake survives, as does half a scandalously rich and seductive German marzipanstollen given to me by one of the editors of this magazine.

There is also an untouched Dickinson and Morris Melton Mowbray pork pie. I look at it from time to time, salivating furiously. I know I need to deal with it before I can move on. **But what to do? I am so weak. I need help.** ■



# WEE-COT SEATING

*Upholstery, Loose Covers,  
Replacement Cushions, Chair  
Caning, French Polishing  
& Furniture Repairs*

**LIZANNE SMITH**  
**TEL: 0118 972 4560**

## SPRUCE MAINTENANCE SERVICE

For all your property maintenance requirements:

- ◆ Decorating - inside and out
  - ◆ Paper Hanging
- ◆ Carpentry - including door easing & hanging
  - ◆ Wall & Floor Tiling & Silicone Renewal
  - ◆ Plumbing - leaking taps etc.
- ◆ Patio's, Landscaping & Garden Design
  - ◆ Hedge Cutting & Planting

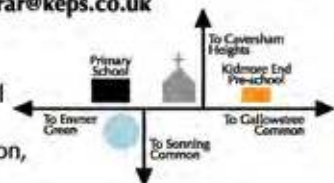
**Pass on your TO DO list**

**ROB SMITH Tel: 0118 972 4560**



Set in an idyllic village location, our small, friendly pre-school creates a very special environment for children guided by a team of highly qualified, caring staff. Please contact us for details.  
[registrar@keps.co.uk](mailto:registrar@keps.co.uk)

With excellent links to Kidmore End Primary School and only 5 minutes from Caversham, Sonning Common, Peppard and Emmer Green.



Kidmore End Pre-School, Parish Room  
Wood Lane, Kidmore End, Reading RG4 9BB  
Registered Charity Number 104 6030  
[www.KidmoreEndPreSchool.co.uk](http://www.KidmoreEndPreSchool.co.uk)

## wood lane dentistry



Vik Chugani BDS MFDS RCSEdin MSc  
Richard McQuillan BDS

- Your local family friendly practice
- Routine general dentistry
- Affordable dental plans with Denplan
- Children seen on the NHS
- Tooth whitening
- Cosmetic dentistry and Implants
- Ample free parking

Now taking on new patients

Saturday and evening appointments available

**HAPPY HEALTHY SMILES ...**



Wood Lane Sonning Common Reading Berkshire RG4 9SJ  
[www.woodlanedentistry.co.uk](http://www.woodlanedentistry.co.uk) Telephone 0118 9722626

## Street & Latin infused...

### FITNESS CLASSES

*with Esme!*

**A FUN WAY  
TO EXERCISE  
AT YOUR OWN PACE**

Every THURSDAY  
7.00pm - 7.45pm

Location: St Michaels Church Hall, Peppard Road,  
Sonning Common, Oxfordshire, RG4 9SU.

Classes are **£5.00** pay as you go!  
No Dance Experience Required

#### DRESS CODE

Loose fitting clothes and comfortable footwear are essential.

Do not hesitate to contact me for information:

Call Esme: **07801745996**

or E-mail: [esme\\_c@hotmail.co.uk](mailto:esme_c@hotmail.co.uk)

For more information about other classes visit:

[www.danceconcepts.co.uk](http://www.danceconcepts.co.uk) E-mail: [info@danceconcepts.co.uk](mailto:info@danceconcepts.co.uk)

## Graham Blake soft furnishing

- Loose Covers
- Conservatory Blinds
- Curtains
- Quilted Bedspreads
- Re-upholstery
- Tracks & Poles
- Carpets
- Plantation Shutters

### TEN YEAR GUARANTEE

For personal, helpful service, please telephone

**01844 261 769**

07802 213 381

[www.grahamblake.com](http://www.grahamblake.com)

Established Family Business

### PICTURE FRAMING

#### SMALL LOCAL WORKSHOP

*Work carried out for local gallery*

**Complete framing service**

**Canvases stretched**

**Mounts cut for existing frames**

**Old photographs restored**

**Local collection/delivery**

*Contact Colin Ward 0118 972 2075*

## Advanced Project Solutions

**'Affordable Quality by Local Tradesmen'**

### Free Advice

**Concept to Completion Service Available**  
Extensions, Newbuilds, Kitchens & Luxury

**Bathrooms (supply and fit or fit only)**

**Please call/email to arrange a site visit**

**07812 998050**

**advancedprojects@btinternet.com**

## Computer repairs

Specialist in home-user & small business support:  
Virus removal, slow computer, data backup,  
data recovery, booting problems, hardware diagnosis

Over 10 years experience

0759 898 3292  jason@millwardit.co.uk

millwardit.co.uk

## TOMALIN & SON

*Funeral Directors*



A Family Owned Funeral Service

**Tel: (01491) 573370**

ANDERSON HOUSE  
38 READING ROAD  
HENLEY-ON-THAMES  
RG9 1AG

**Golden Charter**  
Funeral Plans



## TOMALIN & SON

*Pre-Paid Funeral Plans*



For more information, contact

**Tel: (01491) 573370**

£40 John Lewis Voucher  
or

£40 Donation to Sue Ryder Care  
with each plan taken out on production of this advert

**Golden Charter**  
Funeral Plans



## JJC Electrical Services Limited

**Sonning Common Electrician**

**Jerry Cole**

**Telephone: 07834 346 487**

**E-mail: [jjcelecsevltd@tiscali.co.uk](mailto:jjcelecsevltd@tiscali.co.uk)**

**Website: [www.jjcelecsevltd.co.uk](http://www.jjcelecsevltd.co.uk)**

- Fault diagnosis, repair and rewires
- New installation work
- Fuse board changes
- Lighting advice and installation



## Tai chi for Health

**Kidmore End War Memorial Hall,**  
Reades Lane, Sonning Common

**Tuesdays (Term time)**

9.30-10.30 - Improvers  
10.45-11.45 - Beginners

Chen style Tai chi  
Improve your stamina, balance, strength  
& co-ordination

please ring Debbie on 07802 347943  
[www.debbiepage.org](http://www.debbiepage.org)

## PET COUNTRY SUPPLIES

### We stock all types of

- ✓ Animal Feed
- ✓ Frozen Meat
- ✓ Farm Feeds

### We Stock Products for

- ✓ Animal Well Being
- ✓ Wild Birds
- ✓ Ponds
- ✓ Farm Animals
- ✓ Domestic Animals
- ✓ Wild life
- ✓ Toys and Beds

We have been trading in the village for over 40 years  
We have old fashioned friendly Service  
We can't stock everything but we can get most things  
for your pet! We deliver free on orders over £25.00  
**COME AND SEE US !!**

**43a Wood Lane**

Sonning Common RG4 9SJ

**0118 9723495**

Email [interestedin@petcountrysupplies.co.uk](mailto:interestedin@petcountrysupplies.co.uk)  
[www.petcountrysupplies.co.uk](http://www.petcountrysupplies.co.uk)

Open.....Mon to Sat 9.am to 5.30pm (5pm Sat)  
9am to 4pm Weds  
Closed all day Sunday and Bank Hols

**You may be surprised  
we now stock**



Also We Sell  
MEMBERSHIP for  
**SHIPLAKE & BINFIELD  
ANGLING CLUB**





# JUST FOR KIDS

Hi guys,

Hi, my name's Zack. I've taken over from my sister as the new editor of this page as she has now gone to secondary school and has lots of homework! Here's a little bit about me: I'm eight years old, I live in Sonning Common, I love my two dogs and I love playing Minecraft.

I'd love to hear from you, so please email me what you like doing or any pictures. My email address is [junior\\_editor@sonningcommonmagazine.org](mailto:junior_editor@sonningcommonmagazine.org)

**ZACK**



If you're under 5 or over 14, you might not know what Minecraft is, so I will tell you a bit about it. Minecraft is a computer game made of blocks. There is no aim of the game, all you have to do is build. You can build some interesting things. For instance, in my world, I've built rollercoasters, rockets, and time machines. Here's a picture of a house I've just finished building.



## MY TIP

**HOW TO GET A COMMAND BLOCK:** A command block is a special block you can use to do things you can't do with cheats. To get a command block on a mac all you have to do is turn on cheats, type "/give (then put your user name) 137" once you have done that, press enter and a command block will fall into your inventory. Using this you can make a force field, summon all the animals in the game and make exciting combinations of them, and you can get blocks without mining them.

## SKATEBOARDING



I love skateboarding, so I am very excited about the skateboarding park that is going to open in Sonning Common. My brother and I both got skateboards for Christmas, but at the moment we can only practice on the road. Where do you practice?

## FILM REVIEW

### Walking with Dinosaurs 3D

This is a brilliant film, although bits were very scary. The dinosaurs looked real and even though it's an adventure story, I learnt a bit about dinosaur names.





**Brambles** 

*Weddings* *Funerals*

*Hand-Tied Gift Bouquets*



*National & International Deliveries*

*Fully Qualified Florist* *Free Local Delivery*

**42 Wood Lane • Sonning Common • RG4 9SL**  
**0118 972 1240 0777 179 0916**

*We turn feelings into flowers*

**TradeMark** <sup>TM</sup>

**WINDOWS - DOORS - CONSERVATORIES**  
**FASCIA - SOFFITS - GUTTERING - CLADDING**  
**WINDOW REPAIRS - MISTY GLASS**

**Use your Local Installer with 30 years experience**  
**For a FREE quotation**  
**Call Mike Dockree on**  
**0118 972 4376 or 07785928190**



**All window, door & conservatory installations carry a 10 year guarantee and the finished product is independently inspected with all certificates**

***Fed up with limescale?***

***A Water Softener***

***would be your solution***

**Compass Water Softeners**

**SALT, SALES, SERVICE, INSTALLATION**

0118 972 3773 0118 941 0869 0796 700 9838

[www.compasswatersofteners.co.uk](http://www.compasswatersofteners.co.uk)

Email: [martin@compasswatersofteners.co.uk](mailto:martin@compasswatersofteners.co.uk)

**HELPLINE LANDSCAPE SERVICES**

**Landscaping** - Design, Construction, Garden make over.  
**Groundwork** - Clearance, Footings, Drainage, Grading.  
**Timber work** - Gateways, Decking, Arches, Pergola, Gazebo.  
**Fencing** - Panel, Close Board, Wire mesh, Stock fence.  
**Gardening** - Mowing, Weeding, Pruning, Clearance.  
**Tree work** - Felling, Lopping, Pruning, Clearance.  
**Driveways** - Gravel, Paved, Brick, Concrete.  
**Ponds** - Water features, Ponds, Rills.  
**Patios** - Slab, Stone, Pavers, Brick.  
**Log's for sale** - Cut and split to size.

Based in Sonning Common  
**Tel / Fax: 0118 9721342**  
**Email: [chriscolbeck@btinternet.com](mailto:chriscolbeck@btinternet.com)**

*Autumn Leaf*

**Thinking of moving?**




**For a free valuation of your property please contact Richard Beville or Adrian Davies**

**Beville**  
ESTATE AGENCY

28 Peppard Road, Sonning Common, S.Oxon, RG4 9SU  
[info@beville.co.uk](mailto:info@beville.co.uk) | [www.beville.co.uk](http://www.beville.co.uk) | 0118 924 2526





## MEMORIES OF

By **JOHN LEWIS***Meirion & Joyce Morgan*

*As an ex-resident of Sonning Common, Jane Arch's very sad news of the passing of Joyce and Meirion Morgan brought back many memories.*

I was brought up at 22 Pen-y-fan Road, Llanfaes, Brecon, whilst Meirion was brought up opposite at No. 19, and we joined Llanfaes Junior School together.

At 11 years of age Meirion gained a scholarship to Christ College whilst I went to the local grammar school. Meirion became an accomplished scrum half and I watched him play against Llandovery College.

Joyce lived in an 'old pickwickian' tobacconists in the town. The windows

were filled with clay pipes and corn of the cob pipes, Mearsham pipes and umbrellas. The shelves were covered in all sorts of loose tobaccos in glass jars and tins of snuff.

After I was called up to the RAMC and Meirion to the Welsh Regiment, we didn't meet again for many years. Happily we both came to Sonning Common, Meirion as an accountant in the biscuit industry and I as a teacher in Reading.



They were a lovely, quiet couple, both very musical, as was Meirion's father who founded the Brecon Male Voice Choir and, I believe, once won the Welsh National Eisteddfod.

I thought I would share these memories with you and your readers. ■

*Church news*

As ever, church services were well attended over Christmas and donations to the Children's Society were generous.

The Bishop of Dorchester has appointed the Revd Susan Cooper as House for Duty Associate Priest in the benefice. Susan and her husband Ron live in New Zealand and must first sell their house before they join us. Susan is British, her husband is a New Zealander.

Thank you to all who donated food, clothes or money to the Churches in Reading Drop in Centre (CIRDIC) [enquiries@cirdic.org.uk](mailto:enquiries@cirdic.org.uk)

**DON'T FORGET:**

**3rd Thursday Drop-in** 2.30pm Christ the King Church. Contact Jenny McGregor - 947 2855.

**The Little Lambs church group for under-fives** meets Wednesday 26 February and 26 March 9.30am and 10.30am at St John's. Contact Felicity Cooper - 947 2855.

**DATES FOR YOUR DIARIES:**

**Sunday 19 January** 6.30pm at St John's: Week of Prayer for Christian Unity service

**Saturday January 25** at 7pm in St Mary's Church, Henley: Vivaldi's Gloria and our combined choir from Christ the King and St John's, Kidmore End will be singing the New Zealand carol Te harinui and Brian Knowles' We Three Kings.

**Tuesday 4 March** Shrove Tuesday

**Wednesday 5 March** Ash Wednesday

**Friday 7 March** Women's World Day of Prayer

**Sunday 30 March** Mothering Sunday

**Sunday 20 April** Easter Sunday

**HAPPY NEW YEAR FROM ALL OUR CHURCHES!**

**THE WOMEN'S WORLD DAY OF PRAYER**

**Friday 7 March 2014**

Groups of Christian churches get together each year throughout the world for a one hour service prepared by women of different

countries. Participating churches are the Stoke Row Chapel, Springwater Congregation Church, Christ the King, St John the Baptist and All Saints' CE Churches and St Michael's Catholic Church.

Springwater Congregation Church  
Blounts Court Road

**1pm** soup, roll, tea and coffee

**2pm-3pm** Service

Theme 'Streams in the Desert' by Christian women of Egypt

Some 35 hours later the day will have been celebrated in over 170 countries, with 6,000 services held in the British Isles.

Although organised by women, this is essentially a day of prayer for everybody, demonstrating our solidarity with our sisters and brothers in other countries and all are welcome to attend.

Do come along and join us.  
*Shirley Rixon, Secretary, Peppard and District WWDP Committee* ■

## ALL MAKES SERVICING

*Caring for all your motoring needs for over 50 years!*



- ✓ BOSCH Diagnostics
- ✓ Service & Repair
- ✓ Air Conditioning Service & Re-Gas
- ✓ ATA Highly Qualified Technicians
- ✓ Free Collection & Delivery
- ✓ Courtesy Cars Available

**Sonning Common Vauxhall**

**0118 972 2021**

Peppard Road, Sonning Common, Reading RG4 9SU

**CUSTOMER EXCELLENCE WINNER**

Service Open: Mon-Fri 8am - 6pm • Sat 8.30am - 12.30pm • Sun CLOSED

[www.sonningcommonvauxhall.com](http://www.sonningcommonvauxhall.com)



**£10.00 OFF**

your next MoT on production of this voucher



## CLIVE THE HANDYMAN

*Over 35 years' experience in building trade*

Painting & Decorating – Patch Plastering

Woodwork – Tiling – Fascias

Roofing - Gutter Repairs - Boxing In

Brickwork Repointing - Small Plumbing Jobs

Flat Pack Assembly - Blinds & Curtain Rails

General Household Repairs

No Job Too Small

**All Work Guaranteed – Fully Insured**

**Give me a ring**

**01491 411321 or 07766 540117**



## DK FLOORING

**Flooring Specialist**

NO JOB TOO SMALL OR TOO BIG

Carpet, Vinyl, Wood & Laminate Flooring

**For a FREE Competitive Quote and samples direct to your door**

Call Daniel: 07500709716 Email: [dkcarpets@hotmail.co.uk](mailto:dkcarpets@hotmail.co.uk)

## Sonning Common Pet Care

At Home Pet Care

when you are on holiday or at work

### Cats

Daily visits to clean, feed and pamper

### Small Pets

Home visits to care for your Rabbits, Guinea Pigs, Hamsters, etc

### Dog Walking

Regular or occasional walks

### Puppy Visits

To feed, play, toilet break and clean up

Please call Alison for further information

Tel 0118 9722948 / 07787 114536



**Talullah**  
nails

**Talullah Nails specialising in Bio Sculpture Gel**

A long lasting & chip-proof nail treatment!

Perfect for special occasions...  
or just everyday chic!

**Christine Ullah - Nail Technician**

T: 01491 682982 M: 07791 256853

Northam House, Main Street, Stoke Row, RG9 5QR

[chris@talullahnails.co.uk](mailto:chris@talullahnails.co.uk) [www.facebook.com/TalullahNails](https://www.facebook.com/TalullahNails)

## TEXTUREPLUS

&

## MEB'S Decorplus

**Mr (Husband & Wife Team) Mrs**

•Interior and Exterior Decorating

•Floor and Wall Tiling

•Wallpaper Hanging

•Carpentry- Architraves + Doors + Skirting

•Plastering

•Artexing

•Coving

**Complete Home Improvements**

•NHBC Awarded

•Insurance Work Undertaken

(Quality Comes As Standard)

•PPL Insured

•30+ Year in Business

**(T)07880 542363**

Sonning Common  
Tel: 0118 9721442

**(M)07920 092875**



## Common Sense Nutrition

Practical advice, tailored to your needs

Weight Issues  
Dietary Review  
Food Allergy/Intolerances  
IBS

Pregnancy and Child Nutrition  
Meal Planning  
Shopping Advice



**Tel: 0776 1783034**

Email: [zoehorsepool@hotmail.co.uk](mailto:zoehorsepool@hotmail.co.uk)  
Website: [www.commonnsensenutrition.co.uk](http://www.commonnsensenutrition.co.uk)  
Zoë Horsepool BSc, ANutr



Whatever your electrical needs are, HHP Electrical can help...

With electrical services ranging from:

- Lighting / Power upgrades
  - Full / Part Rewires
  - Fault finding and repairs
  - Full Electrical Safety/ Landlords Inspections
- All to suit the exact requirements of our clients.

**0118 9724108 - [www.hhpelectrical.co.uk](http://www.hhpelectrical.co.uk)**

**[info@hhpelectrical.co.uk](mailto:info@hhpelectrical.co.uk)**

## New Dance Classes for 4-12 year olds

Thursdays at Sonning  
Common Village Hall



3.45pm to 4.15pm – Mini Tap (4-8yrs)\*  
4.15pm to 4.45pm – Mini Street (4-8yrs)\*  
4.45pm to 5.15pm – Mini Modern (4-8yrs)\*  
5.15pm to 5.45pm – Junior Tap (8-12yrs)  
5.45pm to 6.30pm – Junior Jazz (8-12 yrs)



\* Take part in all three Mini Academy classes  
and receive 25% off your total bill, or 10% off  
for two classes.



For more information please contact Catherine  
Lewis, Principal of Dance Arts Academy.  
Mob: 07985 535357  
Email: [catherine@danceartsacademy.co.uk](mailto:catherine@danceartsacademy.co.uk)



# davistate.com

For a **FREE** market appraisal  
of your property, **for sale** or **to let**  
please contact **Davis Tate, Sonning Common.**



Call **0118 972 4242** or email  
**[sonning@davistate.com](mailto:sonning@davistate.com)**



**Julie Norman**  
MNAEA MARLA  
MANAGER



**Jo Bailey**  
SALES & LETTINGS  
NEGOTIATOR



# February 2014

MONDAY 3	Rhymetimes for pre-school children - Sonning Common Library	10am - 10.30am
WEDNESDAY 5	Village Coffee Morning hosted by Sonning Common Women's Institute. Open to all. Raising funds for local community projects - Village Hall	10.30am - 12noon
FRIDAY 7	Nottakwire practice - Village Hall	9.45am - 11.30am
FRIDAY 7	Scrabble club. All abilities welcome - Sonning Common Library	10am
SATURDAY 8	National Libraries Day - Sonning Common Library	10am
TUESDAY 11	Chiltern Edge Horticultural Society - "Introduction to Bonsai" by Keith Winter - Peppard War Memorial Hall	7.30pm
FRIDAY 14	Notts group - Village Hall	9.30am - 12noon
MONDAY 17	Rhymetimes for pre-school children - Sonning Common Library	10am - 10.30am
MONDAY 17	Sonning Common Parish Council - Village Hall	8pm
THURSDAY 20	FISH - Pub lunch	11.30am
THURSDAY 20	Sonning Common Women's Institute - "Bletchley Park - a minor cog in a major wheel" a talk by Betty Webb. Visitors welcome - Village Hall	7.30pm
FRIDAY 21	Nottakwire practice - Village Hall	9.45am - 11.30am
THURSDAY 27	FISH - Henley Farmers' Market	
FRIDAY 28	Notts group - Village Hall	9.30am - 12noon

# March 2014

MONDAY 3	Rhymetimes for pre-school children - Sonning Common Library	10am - 10.30am
MONDAY 3	Village Coffee Morning hosted by Sonning Common Women's Institute. Open to all. Raising funds for local community projects - Village Hall	10.30am - 12noon
WEDNESDAY 5	Chiltern Players play reading. Buy a drink and join in - Reformation pub	8pm
FRIDAY 7	Nottakwire practice - Village Hall	9.45 - 11.30am
FRIDAY 7	Scrabble club. All abilities welcome - Sonning Common Library	10am
FRIDAY 7	Women's World Day of Prayer service. Soup, a roll and tea & coffee will be served. All welcome - Springwater Congregational Church, Blounts Court Rd	1pm
TUESDAY 11	Chiltern Edge Horticultural Society - "Wildlife & Wildlife Gardening" by Stuart Mabutt - Peppard War Memorial Hall	7.30pm
FRIDAY 14	Notts group - Village Hall	9.30am - 12noon
MONDAY 17	Rhymetimes for pre-school children - Sonning Common Library	10am - 10.30am
MONDAY 17	Sonning Common Parish Council - Village Hall	8pm
THURSDAY 20	FISH - Pub lunch	11.30am
THURSDAY 20	Sonning Common Women's Institute - AGM & Quiz. Visitors welcome - Village Hall	7.30pm
FRIDAY 21	Nottakwire practice - Village Hall	9.45 - 11.30am
FRIDAY 21	Annual Village Quiz - Sonning Common Primary School	7.30pm
THURSDAY 27	FISH - Henley Farmers' Market	
FRIDAY 28	Notts group - Village Hall	9.30am - 12noon

The FISH Bus programme for February is currently available and the March programme will be published on 20 February 2014. For more information and to book call 0118 972 3986. FISH runs regular shopping trips to Tesco in Henley and Henley and Reading town centres. Also monthly trips to a local Garden Centre and a Mystery Tea Tour. For more information and to book call 0118 972 3986. ■





## FOR BEAUTIFUL GARDENS

Choose from our wide range of quality garden services: design and construction, plants and maintenance. We tailor-make our service for you. For a free, no-obligation visit and written estimate from RHS qualified staff, call **01844 279430** or email [info@brannfordsgardens.co.uk](mailto:info@brannfordsgardens.co.uk) Full details at [www.brannfordsgardens.co.uk](http://www.brannfordsgardens.co.uk)

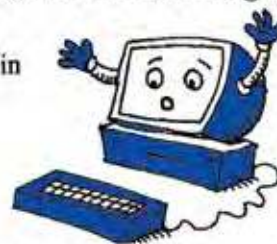


## Computer Problems?

*Free quote, no fix no fee, no call out charge*

Over 200 happy customers in Sonning Common.

Milo and Michael Harper



**0118 972 4905**

**Milo Technical Support  
22 Sedgewell Road**

## HENLEY GLAZING AND WINDOW CENTRE LIMITED

Incorporating



**01491 629901**

Glass Supply, Glazing Service,  
Mirrors, Shelves, Tabletops,  
Sealed Units, Lead Lights,  
Locks, Secondary Glazing,  
Shower Screens



**FENSA**  
Registered Company



**0118 9419210**

Suppliers and installers of:  
UPVC, Aluminium and  
Timber Windows  
Doors and Conservatories  
Fascias, Soffits and Guttering

Workshop: Unit 12, Manor Farm, Peppard Common, Henley-on-Thames RG9 5LA  
Fax: 01491 629904 Email: [henleyglazingwindow@yahoo.co.uk](mailto:henleyglazingwindow@yahoo.co.uk)

# TANDOORI

## Connoisseur

*Come & Experience authentic  
Tandoori & Bengali Cuisine*

**21 Wood Lane  
Sonning Common  
0118 972 3104 / 972 1054**

- ★ Fully Air-Conditioned
- ★ Large Groups Catered For
- ★ Open 7 Days a Week

**TAKE-AWAY MENU**

**We Guarantee Prompt Service on All Orders**

## S J HINTON

### Carpenter & Joiner

Wide range of high-quality carpentry services delivered by skilled craftsman  
Built-In Wardrobes, Cupboards, Shelving.  
Kitchen Fitting, Doors, Floors, Windows,  
Stairs, Roof Construction.

**Telephone Steve on 0118 972 3602  
or 07887 653866**

## Sonning Common Beauty

12 Newfield Road Telephone 0118 972 3059

[www.sonningcommonbeauty.co.uk](http://www.sonningcommonbeauty.co.uk)

- MANICURE • PEDICURE • ORGANIC FACIALS
- MD FORMULATIONS GLYCOLIC PEELS
- WAXING • LASH AND BROW TREATMENTS
- SPRAY TANNING • MAKE-UP • MASSAGE
- BRIDAL HOLIDAY AND MUM-TO-BE PACKAGES AVAILABLE

Gift Vouchers Available

Some reduced price treatments available each week please ring to check availability



**Sonning Common Health Centre**  
Wood Lane, Sonning Common,  
Reading, RG4 9SW

- Back & Neck pain
- Muscle / Joint Strains
- Ligament Sprain
- Sports Injuries
- Whiplash Injuries
- Shoulder Injuries
- Post-Operative Rehabilitation
- Pre / Post Natal Exercise
- Respiratory Conditions
- Lower Limb & Foot Problems

- Appointments available every day
- Pilates classes throughout the week

Jo Pereira MCSP  
Catherine Matthews MCSP  
Chartered Physiotherapists

T: 01189 722 745

E: [info@functionalphysio.co.uk](mailto:info@functionalphysio.co.uk) [www.functionalphysio.co.uk](http://www.functionalphysio.co.uk)

The team at Functional Physio are Chartered Physiotherapists registered with the Health Professions Council and are recognised by all major insurance companies, including Bupa and Axa PPP.



**noble intentions**  
landscape garden design

Professional  
advice, design &  
planting for your  
garden.

Call Gail Noble  
on 0118 972 3214  
[www.noble-intentions.com](http://www.noble-intentions.com)



High quality education and child care under the  
Early years foundation stage (EYFS) for children  
4 months to 5 years

- Good OFSTED report
- Pre-school sessions available
- Open all year, Monday to Friday, 7am to 7pm
- Flexible hours
- Early years education grants available
- Curriculum includes French, Music & Movement and Thames Valley Gym
- Small friendly and personal care in Sonning Common

For further information, please ask for the manager  
on 0118 972 4783, or visit our website.

[www.alphabetdaynurseries.com](http://www.alphabetdaynurseries.com)

emails: [info@alphabetdaynurseries.com](mailto:info@alphabetdaynurseries.com)



## The Bay Trees

### All Day Breakfast & Lunch Menu

Selection of homemade dishes, freshly prepared to order

### Teas, Coffees and Cakes Served All Day

Open from 9am - 4:30pm Monday - Friday

### New! Evening Sitings

Book for one of our themed evening meals. Fully Licensed

All in our elegant vintage décor

25 Wood Lane • Sonning Common • Oxfordshire • RG4 9SJ

**0118 327 1128**



## Fed Up With Call Centres Barrs Insurance

**Mark & Helen Richards**  
**Your Local Insurance Brokers**  
**For The Unusual & The Usual**  
**Let Us Take Care Of Your Insurance**

- House & Contents • Business • Liabilities
- Travel • Landlords • Professional Indemnity
- Horse • Shops • Sickness / Accident
- Commercial / Unusual Vehicle

If It's Not listed We Still Can Help  
All Types Of Insurance Enquiries Welcome

**0118 924 2603**

mail: [info@barrs-insurances.co.uk](mailto:info@barrs-insurances.co.uk)  
[www.barrs-insurance.co.uk](http://www.barrs-insurance.co.uk)

Unit 2, Kidby's Yard, Kennylands Road, Sonning Common RG4 9JT

## Ridiculously Easy Accounting, Guaranteed!

Specialising in helping Start-Ups and Small Businesses, we offer a full range of accounting and tax services by email and post. Need accounts and tax to satisfy HMRC? Want to outsource all your accounting to free up time? We make your life simpler, with performance guarantees ensuring excellent service or your money back.

Request a free quote online now at  
[www.blueredaccountants.co.uk](http://www.blueredaccountants.co.uk)

