



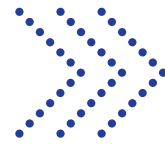
**A bright light in a  
community that cares.**





Hope House's mission is to break the cycle of domestic violence by providing safe refuge and supportive services that educate and empower those impacted by domestic violence. Hope House will advocate social change that protects and engenders a person's right to live a life free of abuse.

# Hope House Milestones



**1983:**

Hope House opens to serve eastern Jackson County.

**1989-1991:**

Agency services are expanded to include Court Advocacy in six municipal courts.

**1993-1994:**

Hope House raises \$2.3 million to build new facility in Independence.

**2002:**

Lee's Summit campus opens and services are expanded to include Guardian Program and BridgeSPAN.

**2009:**

Lethality Assessment Program (LAP) is launched, giving law enforcement the ability to assess a victim's risk of serious injury and/or death.

**2017:**

Hope House achieves accreditation from the Council on Accreditation.

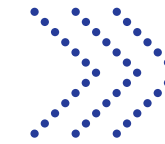


**1996-1999:**

Outreach expands to Lee's Summit to include support groups and court advocacy.

**2019:**

Hope House secures new funding to provide permanent housing services (rental assistance and advocacy/case management) to survivors fleeing or attempting to flee domestic violence.



**2000-2001:**

\$4 million capital campaign begins for construction of Lee's Summit campus and Civil Legal Program is launched.

**2021:**

Hope House receives reaccreditation and is recognized as an Outstanding Provider from the Council on Accreditation.



**ONE in THREE women will experience domestic violence in their lifetime.**



# OUTREACH PROGRAMS

## SHELTER

We provide safe, confidential emergency shelter for adults and children.



## THERAPY

We provide individual and group counseling for adults and children.



## OUTREACH

We provide programs for survivors on their journey to safety and independence.



## OUR PILLARS

## OF SUPPORT



### Court Advocacy

Court Advocates attend thirteen area courts, including Order of Protection Court, and work directly with seven local police departments.



### BridgeSPAN (Safe Patient Advocacy Network)

Hospital Advocates provide onsite advocacy to survivors as well as training for medical personnel.



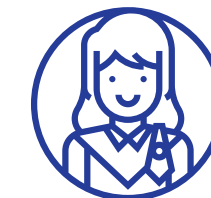
### Guardian Program

A monitored exchange and supervised visitation program for parents and children that prevents post-separation violence.



### Transitional & Permanent Housing

Survivors who no longer need emergency services are assisted with finding and maintaining safe and affordable housing.



### Legal

Contract attorneys provide civil legal assistance to survivors of domestic violence.

### **TAX CREDITS:**

Individual and corporate monetary charitable contributions made to Hope House that total at least \$100 during the taxable year, are eligible for a tax credit equal to **50%** of the amount contributed for Missouri taxes.

### **MONETARY DONATIONS:**

Financial support is the greatest way to make an immediate impact and to assist those affected by domestic violence.

### **CORPORATE & ORGANIZATIONAL GIVING:**

We have many opportunities beyond those presented here for your business/organization to join the prominent civic and business leaders that are part of the Hope House donor family.

### **WORKPLACE GIVING:**

Matching charitable contributions can be a great way to double, or even triple the corporate fundraising efforts.

### **PLANNED GIVING:**

Hope House is honored to be included in your planned giving through a will, trust or estate giving.

### **IN-KIND DONATIONS:**

Your family, company, church or community organization may participate in a collection drive of new items for our urgent needs, children's programs, holiday store, and more.

### **GRANT FUNDING:**

Many of our programs are funded in part by grants from corporations and family foundations. We welcome the opportunity to learn how we can partner together.

## **WAYS TO GIVE**



**Hope House serves  
over 4,000 adults  
and children  
annually.**

**\$15,000**

Will provide three families of four, 30 nights of safe shelter.

**\$10,000**

Will provide one month of Hospital Advocacy services.

**\$5,000**

Will provide 70 hours of Court Advocacy services.

**\$2,500**

Will provide five families with weekly supervised visits for one month.

**\$1,000**

Will provide a child 16 hours of individual therapy.

# PARTNER WITH HOPE HOUSE

Fundraisers are a great way to get your business or organization working together for a good cause. Have an idea? Let's join forces and work together!

Here are just a few fun and simple ideas:

- Urgent needs/Holiday gift collection
- Spare change campaign
- 50/50 raffle
- Fundraiser for your birthday, i.e. Facebook Campaign
- Holiday party fundraisers
- Jeans or shorts day/month
- 5k or 10k run
- Trivia contests

Experience the reward of giving back. Hope House has a variety of volunteer opportunities throughout the year.

- Special events
- Collection drives
- Holiday Store
- Facility maintenance
- Resource fairs
- Special trades/expertise--IT, technical needs, exterior and interior artisanship, design skills, etc.

## VOLUNTEER



# SUPPORT OUR EVENTS

We hold several events throughout the year to raise funds, provide awareness and engage with our supporters. All of these events are fun and entertaining!



Thursday, April 28, 2022  
Topgolf Overland Park

## Annual 12-ish Bars of Christmas

Saturday, December 11  
Downtown Lee's Summit  
*Third party event*

These three events are hosted by the Emerging Leaders of Hope House.



Sand volleyball tournament held in October at Volleyball Beach



Trivia night held in the summer at PARLOR



Pickle Ball tournament held in June at Chicken N Pickle



# OCTOBER IS DOMESTIC VIOLENCE AWARENESS MONTH

Join Hope House each October to raise awareness and critical life-saving funds.





# EVERYDAY HERO LUNCHEON

Thursday, April 7, 2022

11 a.m. to 1 p.m.

Hilton President Kansas City

Join us for a special recognition luncheon to thank Hope House supporters, our Everyday Heroes who selflessly give of themselves to ensure a brighter future for those we serve.

Emcee: Karli Ritter, FOX4 Meteorologist



2021 Hero of the Year  
Diane "Mama" Ray



2021 Keynote  
Caryn Davies  
Three-time Olympic Gold Medalist

	TITLE \$6,000 (Exclusive)	VISIONARY \$5,000	RAINMAKER \$2,500	FOR A CAUSE \$1,000
Title Sponsor	✓			
Podium appearance	✓			
Event tickets	2 tables for 10	2 tables for 10	1 table for 10	1 table for 10
Table placement	Front Row	Front Row	Preferred	
Valet parking	10 Valet	10 Valet	5 Valet	
Logo on digital invitation	✓	✓	✓	
Logo or name on event website	Logo	Logo	Logo	Name
Logo or name in program	Logo	Logo	Logo	Name
Name mentions: media, social and e-blasts	✓	✓	✓	✓

Hope House sponsor partners receive prominent acknowledgment in front of our diverse and loyal supporters while enjoying networking, select benefits, and value-added opportunities.

# believe

*illuminating hope*

Saturday, August 6, 2022

5:30-11:00 p.m.

Loews Kansas City Hotel

Emcee: Kris Ketz

We would be honored by your presence at the annual **believe** gala, inspiring those affected by domestic violence to believe in a brighter future.



Revel in an elegant evening with unbelievable entertainment, ambiance and special guests.

Silent and live auctions featuring unique and one of a kind items!



	PRESENTING \$25,000	TITLE \$15,000	CHAMPION \$10,000	DREAM \$7,500	INSPIRE \$5,000	IMAGINE \$2,500	ADVOCATE \$500
Tables & Tickets	2 front row tables for 10	1 premier table for 10	1 premier table for 10	1 preferred table for 10	1 preferred table for 10	1 table for 10	2 tickets
Industry exclusive sponsor	✓						
Podium appearance	✓						
Valet parking	10	5	5	5			1
Private meet and greet with Keynote	✓	✓					
Logo on invitation	✓						
Exclusive logo placement night of the event	✓	✓	✓				
Ad in program	FULL PAGE	HALF PAGE	THIRD PAGE	THIRD PAGE			
Logo within mobile bidding site	✓	✓	✓	✓			
Logo or name in program	LOGO	LOGO	LOGO	LOGO	LOGO	NAME	NAME
Name mention, web, social, e-blasts	✓	✓	✓	✓	✓	✓	
Name on believe 2022 event page	LOGO	LOGO	LOGO	LOGO	LOGO	LOGO	NAME

Hope House sponsor partners receive prominent acknowledgment in front of our diverse and loyal supporters while enjoying networking, select benefits, and value-added opportunities.

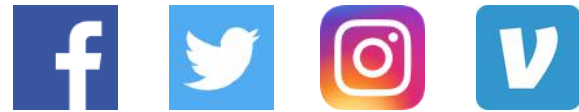
Cocktail Reception Sponsor | \$5,000 One Available | **SOLD** All Inspire Sponsor Benefits + Exclusive Logo Placement at Cocktail Reception

# HOPE HOUSE BOARD OF DIRECTORS

Julie Ross | Empower Retirement | CHAIR  
Angela Ross Presnell | Davis Elen Advertising | IMMEDIATE PAST CHAIR  
Abby Mocek | BOK Financial | CHAIR ELECT  
Tina Johnson | Shine Boutique | SECRETARY  
Douglas Schmitt | PricewaterhouseCoopers LLP | TREASURER  
Matthew Oldroyd | American Century Investments | AT LARGE  
Samuel Dean | BMO Harris Bank  
Amy Doll | CommunityAmerica Credit Union  
Erica Froelich | JE Dunn Construction  
Crystal Howard | Armstrong Teasdale  
Joe Kauten | Waddell & Reed Financial, Inc.  
Laura Landes | NBH Bank  
Julie Lonergan | Hallmark Cards, Inc.  
Andrew McMonigle | CrossFirst Bank  
Matthew Oldroyd | American Century Investments  
Jaime Simpson | NetStandard  
Tara Steiner | RSM US, LLP  
Adrienne Vallejo Foster | Foster Consulting  
Carolyn Walters | GEHA  
Dr. Lynette Wheeler | Truman Medical Center - Lakewood  
Janelle Williams | Jack Henry & Associates

**Mailing Address:**  
PO Box 577  
Lee's Summit, MO 64063  
816-461-4188

**FOLLOW US!**



**Facebook & Twitter: @hopehouse**

**Instagram: @hopehousekc**

**TikTok: @hopehouse20**

**Venmo:**



# Hope House



FOUNDED 1977  
Accredited

# EMERGING LEADERS OF HOPE HOUSE

TJ Dunavant | CHAIR | Central Bank of the Midwest  
Britney Weiser | CHAIR ELECT | DRAW Architecture + Design  
Katie Brunsman | IMMEDIATE PAST CHAIR |  
International Express Trucking, INC.  
Katie Hayes, Grubhub  
Stephanie Kusek | SECRETARY | Hollis + Miller Architects  
Emily Eutsler | SOCIAL MEDIA CHAIR | JE Dunn Construction  
Lacey Brown | SMA Engineering  
Michelle Lafrinere | Pro-Fi 20/20, CPAs  
Courtney Laufketter | Budget Blinds  
Tyrei Lofton, Fox4  
Luigi Loizzo | Community Volunteer  
Morgan Marquez | American Century Investments  
Madeline McCormick | DST Systems  
Tiffany Newman | US Bank  
Karina Pham | City of Lone Jack Police Department  
Kayley Shantz, McCownGordon Construction  
Jason Snellenberger | Bar K Dog Bar  
Aaron Stewart | Catapult International  
Chris Thomas | VMLY&R  
Becca Wilkes | Dimensional Innovations

**Website: [hopehouse.net](http://hopehouse.net)**

