

ho ho, let's glow!

belif holiday magic of glow set

A full-size fave and two mini sizes.

Limited-edition kit includes:

- The True Cream Moisturizing Bomb, 1.69 fl. oz.
- Aqua Bomb Sleeping Mask .33 fl. oz.
- Moisturizing Eye Bomb, .16 fl. oz.

Comes in a festive holiday gift box with a fun cutout window.

087-371 reg. \$42

\$38

3-piece set



© 2021 The Avon Company. All rights reserved.

Enjoy these special prices and exclusive offers only when you shop with an Avon Representative.

CAMPAIGN 25, 2021

THE AVON COMPANY
165 BROADWAY, NY, NY 10006

To place an order, call:

**PEFC
LOGO
TO BE
PLACED
HERE BY
LSC**



Brochure effective until _____

Find me at www.youravon.com/ _____



Not applicable in Puerto Rico or the Caribbean.



See our commitment at avon.com/animal-welfare

RETURN POLICY If you are not satisfied, return any item within 45 days. View Avon's full 45-Day Return Policy at avon.com/returns.

AVON

CAMPAIGN 25

'Tis the Season

TO GET
COZY



Scan. Shop. Share.

Shop the way you want to shop. Watch special video features, try our virtual makeover tool and play with all our makeup.

- *Find your perfect shade.*
- *Share your faves.*
- *Discover something new!*



Scan the QR code and experience the catalog right on your phone!

AVON.COM at your fingertips.



◆ **Sweater Bootie Slipper**
Knit bootie with faux-fur lining. Man-made materials. Imported. reg. \$32.99
\$24.99 each pair

Ivory	Red
S(5-6) 151-274	S(5-6) 151-092
M(7-8) 151-308	M(7-8) 151-107
L(9-10) 151-312	L(9-10) 151-164
XL(11-12) 151-327	XL(11-12) 151-255

Enjoy these special prices and exclusive offers only when you shop with an Avon Representative.

COMFY, COZY Are We



NEW! LIMITED EDITION

❖ **Joy Love Peace Pajamas**

Navy long-sleeve tee with "JOY LOVE PEACE" graphic print and plaid-print pants with functional drawstring, elastic waistband and side pockets. 100% cotton. Center back length for top: 25" on M; 26" on 1X. Pant inseam: 30" for all sizes. Machine wash, dry flat. Imported.
 XS(0-2) **809-295**
 S(4-6) **811-640**
 M(8-10) **811-655**
 L(12-14) **811-660**
 XL(16) **811-674**
 1X(18W-20W) **811-689**
 2X(22W-24W) **811-693**
 3X(26W-28W) **811-708**
 reg. \$49.99
\$39.99

the 2-piece set

❖ **Smile Shine Sparkle Pajamas**

Red long-sleeve tee with "SMILE SHINE SPARKLE" graphic print and navy pull-on star-print joggers with ribbed cuff, functional drawstring, elastic waistband and side pockets. Cotton/spandex. Center back length for top: 25" on M; 26" on 1X. Pant inseam: 30" for all sizes. Machine wash, dry flat. Imported.
 XS(0-2) **808-121**
 S(4-6) **808-136**
 M(8-10) **808-140**
 L(12-14) **808-155**
 XL(16) **808-160**
 1X(18W-20W) **808-231**
 2X(22W-24W) **808-580**
 3X(26W-28W) **809-280**
 reg. \$49.99
\$39.99

the 2-piece set

For size and fit chart, see page 169.

Enjoy these special prices and exclusive offers only when you shop with an Avon Representative.



❖ **Glitter Slippers**
 Glitter slipper with faux-fur lining and trim. Man-made materials. Imported.
 reg. \$19.99
\$14.99
each pair

Red
 S(5-6) **104-444**
 M(7-8) **105-182**
 L(9-10) **105-570**
 XL(11-12) **105-599**

Gold
 S(5-6) **101-043**
 M(7-8) **101-096**
 L(9-10) **102-350**
 XL(11-12) **104-315**
 Silver
 S(5-6) **107-591**
 M(7-8) **108-234**
 L(9-10) **108-598**
 XL(11-12) **108-693**

Walking in a
GLITTER WONDERLAND

**NEW!
LIMITED
EDITION**



❖ **Classic Unisex Slippers**
His or hers slip-on slippers with faux-sherpa lining. Man-made materials. Imported. reg. \$22.99
\$16.99 each pair

*NEW
color!*

Black
S(5-6) **004-226**
M(7-8) **004-264**
L(9-10) **004-374**
XL(11-12) **004-412**
XXL(13-14) **004-450**

Tan
S(5-6) **004-848**
M(7-8) **004-829**
L(9-10) **004-647**
XL(11-12) **004-484**
XXL(13-14) **004-465**

Grey
S(5-6) **151-331**
M(7-8) **151-350**
L(9-10) **151-403**
XL(11-12) **151-480**
XXL(13-14) **151-547**

UNISEX SIZE CHART

	WOMEN'S	MEN'S
S	5-6	
M	7-8	5-6
L	9-10	7-8
XL	11-12	9-10
XXL	13-14	11-12



❖ **Plaid Moccasin Slippers**
Plaid moccasin with faux-sherpa lining and bow-tie detail on front. Man-made materials. Imported.
6M **807-584**
7M **807-599**
8M **807-660**
9M **807-823**
10M **808-102**
11M **808-117**
reg. \$34.99
\$26.99

Get your
HOLIDAY KICKS

Enjoy these special prices and exclusive offers only when you shop with an Avon Representative.

◆ **Fa La La La Pajamas**
 Grey long-sleeve top with "Fa la la la" graphic print and multicolor striped-print pant with functional drawstring, elastic waistband and side pockets. Cotton/polyester. Center back length for top: 25" on M; 26" on 1X. Pant inseam: 30" for all sizes. Machine wash, dry flat. Imported.

XS(0-2) **088-382**
 S(4-6) **088-488**
 M(8-10) **089-575**
 L(12-14) **090-120**
 XL(16) **097-288**
 1X(18W-20W) **098-648**
 2X(22W-24W) **098-667**
 3X(26W-28W) **098-671**
 reg. \$49.99
\$39.99 the 2-piece set

◆ **Glowing Star Pajamas**
 Pink long-sleeve top with star graphic print and plaid-print pant with functional drawstring, elastic waistband and side pockets. 100% cotton. Center back length for top: 25" on M; 26" on 1X. Pant inseam: 30" for all sizes. Machine wash, dry flat. Imported.

XS(0-2) **084-190**
 S(4-6) **087-443**
 M(8-10) **087-720**
 L(12-14) **087-792**
 XL(16) **087-845**
 1X(18W-20W) **087-879**
 2X(22W-24W) **087-936**
 3X(26W-28W) **088-234**
 reg. \$49.99
\$39.99 the 2-piece set

For size and fit chart, see page 169.

Enjoy these special prices and exclusive offers only when you shop with an Avon Representative.



NEW! LIMITED EDITION

◆ **Ballet Sparkle Slippers**
 Ballet slipper with glitter star print and bow trim on front. Man-made materials. Imported.
 reg. \$19.99
\$14.99 each pair

Navy
 S(5-6) **081-995**
 M(7-8) **082-040**
 L(9-10) **083-869**
 XL(11-12) **083-950**

Pink
 S(5-6) **074-318**
 M(7-8) **074-413**
 L(9-10) **079-449**
 XL(11-12) **080-640**

Grey
 S(5-6) **080-654**
 M(7-8) **080-669**
 L(9-10) **081-938**
 XL(11-12) **081-942**



Heavenly **DREAMS**

**Layered Zodiac
Necklace**

Triple layered chain in silvertone. 13½" L with 4" extender and lobster closure. reg. \$16.99

\$12.99 each



ARIES

Mar. 21 - Apr. 19

143-705



TAURUS

Apr. 20 - May 20

143-758



GEMINI

May 21 - Jun. 20

144-003



CANCER

Jun. 21 - Jul. 22

144-080



LEO

Jul. 23 - Aug. 22

144-410



VIRGO

Aug. 23 - Sep. 22

144-610



LIBRA

Sep. 23 - Oct. 22

145-359



SCORPIO

Oct. 23 - Nov. 21

145-363



SAGITTARIUS

Nov. 22 - Dec. 21

145-378



CAPRICORN

Dec. 22 - Jan. 19

145-542



AQUARIUS

Jan. 20 - Feb. 18

145-580



PISCES

Feb. 19 - Mar. 20

143-595



*It's sparkle
TIME!*



**NEW!
LIMITED
EDITION**

**Reflective
Mirror Watch**

Glitter dial with 35mm diam. case. Silvertone with 9" leatherlike strap and buckle closure.

Red 142-656
Green 142-880
Purple 142-751
Blue 142-637
reg. \$39.99
\$32.99

Enjoy these special prices and exclusive offers only when you shop with an Avon Representative.

**NEW!
LIMITED
EDITION**

Starry Night Collection

Clear stones and the look of opal stones and beads with ornate winter starburst motif in silvertone.

Pin

Approx. 2" L.
154-020
reg. \$24.99
\$19.99

Stretch Bracelet

One size fits most.
153-463
reg. \$16.99
\$12.99

**Pendant
Necklace**

Necklace,
16½" L with
3½" extender.
Pendant, ¾" L.
153-410
reg. \$16.99
\$12.99

Bypass Ring

Approx. 1" W.
Sizes:
6 153-698
8 153-774
10 153-789
reg. \$12.99
\$9.99

Stud Earrings

Approx. ½" L. Pierced.
153-501
reg. \$10.99
\$8.99



*"Avon 2021"
engraved on back.*



STARS of Wonder



*necklace and
earring set*

**Radiant Red
Collection**

The luxurious look of ruby with clear pavé accents in silvertone.

**Three Stone
Statement Ring**

Sizes:
6 811-765
8 811-770
10 811-784
reg. \$9.99
\$7.99

**Necklace and
Earrings Set**

Necklace, 16½" L
with 3½" extender.
Earrings, approx.
½" L. Pierced.
759-805
reg. \$24.99
\$19.99 the set



Teardrop Earrings

2" drop. Fishhook.
811-750
reg. \$12.99
\$9.99

Pull-Cord Bracelet

One size fits most.
811-746
reg. \$16.99
\$12.99



Enjoy these special prices and exclusive offers only when you shop with an Avon Representative.

NEW!
LIMITED
EDITION



DIVINE *Inspirations*

14 | C25



Watch
Goldtone markers
and glitter cross
accent dial. 32mm
diam. case.
9" leatherlike strap.
811-860
reg. \$42.99
\$32.99

Bracelet
One size fits most.
Charm, approx.
3/4" L.
811-822
reg. \$12.99
\$9.99

Earrings Set
Set of three pairs.
Milgrain drop,
approx 3/4" L.; cross
studs and crystal
studs, approx. 1/4" L.
Pierced.
811-818
reg. \$12.99
\$9.99 the set

Enjoy these special prices and
exclusive offers only when you
shop with an Avon Representative.



Pavé Cross Collection
Filigree texture
and CZ stone accents
in goldtone.

Necklace
Necklace, 16 1/2" L
with 3 1/2" extender
and lobster closure.
811-803
reg. \$16.99
\$12.99

Ring
Approx. 1/2" W.
Sizes:
6 **811-837** 8 **811-841**
10 **811-856**
reg. \$12.99
\$9.99



set of
3 pairs

C25 | 15

**NEW!
LIMITED
EDITION**

**Sparkly Pearly
Collection**
Classic
and classy
pearlesque and
silvertone beads.

**Necklace and
Earring Set**
Silvertone. Necklace,
16½" L with ¾" extender. Earrings,
approx. 1" L. Pierced.
763-326
reg. \$24.99
\$19.99 the set

**Stretch
Bracelet**
One size
fits most.
811-909
reg. \$16.99
\$12.99

*necklace and
earring set*



**Shimmering
Pendant
Necklace**

Faceted glass
pendants with
rainbow effect
on silvertone
beaded
layered chains.
16½" L with
¾" extender.
Pendant,
approx. 1" L.
Moon **153-239**
Star **153-129**
Heart **153-281**
reg. \$19.99
\$14.99
each

Show Your SPIRIT

**Mother-of-Pearl
Overlay Necklace**

Ornate metal designs
over genuine mother-of-
pearl with glass stone
pavé accents. 16½" L
with ¾" extender
and lobster closure.
Pendant, approx. 1¼" L.
Heart/Rose Goldtone **811-875**
Cross/Silvertone **811-880**
Family tree/Goldtone **811-894**
Moon/Silvertone **761-510**
reg. \$16.99
\$12.99 each

Enjoy these special prices and
exclusive offers only when you shop
with an Avon Representative.



SPARKLE *and Joy*



**Twelve Days of Cheer
Earrings Gift Set**
Set of 12 pairs. Multicolored
studs. Pierced.
811-799
reg. \$24.99
\$19.99 the set

Enjoy these special prices and
exclusive offers only when you shop
with an Avon Representative.

NEW! LIMITED EDITION

Festive Earrings Collection

Green and red
epoxy and clear
stone accents.
Approx. 1 1/2" L.
Pierced.

Poinsettia (Goldtone)

755-302

Candy Cane (SILVERTONE)

151-441

Tree (SILVERTONE)

151-370

reg. \$12.99

\$9.99

each pair



Festive Stretch Bracelets with Holiday Charms

Mix of glass beads and faux pearls.
One size fits most.

Candy Cane 151-968 Tree 151-528 Poinsettia 759-786

reg. \$16.99

\$12.99 each

NEW! LIMITED EDITION

Everyday Sparkle Digital Watch
 Silicone strap with glitter.
 10" with buckle and 36mm x 43mm case.
 Silvertone 152-782
 Blue 152-816
 Goldtone 152-759
 reg. \$39.99
\$29.99 each

Enjoy these special prices and exclusive offers only when you shop with an Avon Representative.



A time **TO GIVE**



Birthstone Earrings Pack
 Three pair set.
 Multicolor glass stones in goldtone.
 Studs, approx. 1/4" diam.; hoops, approx. 1/2" diam.; drop, approx. 1 1/4" L.
 Pierced.
 reg. \$12.99
\$9.99 the pack



January
155-341



February
155-451



March
156-936



April
156-955



May
157-124



June
157-139



July
157-158



August
157-215



September
157-220



October
157-234



November
157-253



December
157-272

Bling on the HOLIDAYS

Huggie Earrings

Approx. 1/2" diam.
Silvertone:

Blue 152-706
Purple 152-725

Goldtone:

Red 152-710
Green 152-744
reg. \$12.99

\$9.99 each pair

Party Pavé Collection

Red or green glass pavé
accent stones in goldtone or
purple or blue in silvertone.

Statement Ring

In goldtone or
silvertone.

Sizes:

Green (Goldtone)

6 152-596

8 152-634

10 152-649

Blue (Silvertone)

6 152-448

8 152-452

10 152-558

Purple (Silvertone)

6 152-668

8 152-687

10 152-691

Red (Goldtone)

6 152-070

8 152-194

10 152-342

reg. \$12.99
\$9.99 each

NEW! LIMITED EDITION

Baguette

Pull-Cord Bracelet

Colored glass stones
with adjustable
pull-cord closure.
One size fits most.

Blue (Silvertone) 811-947

Purple (Silvertone) 811-951

Red (Goldtone) 811-928

Green (Goldtone) 811-932

reg. \$16.99

\$12.99 each

Enjoy these special prices
and exclusive offers only
when you shop with
an Avon Representative.



Make a statement
THIS HOLIDAY

Antiqued Allure Collection

Antique silvertone with the look of marcasite accent stones.

Bracelet

One size fits most. Square casting approx. 3/4".

146-738
reg. \$19.99
\$14.99

Earrings

1" diam. Pierced.

146-264
reg. \$9.99
\$7.99

Statement Ring

Sizes:

6 **146-742** 8 **146-757**

10 **146-761**

reg. \$12.99

\$9.99 each

Statement Necklace

16 1/2" L with 3 1/2" extender and lobster closure.

145-640
reg. \$24.99
\$19.99

Enjoy these special prices and exclusive offers only when you shop with an Avon Representative.

**NEW!
LIMITED
EDITION**

Golden Pearly Collection

Statement pearlesque beads in goldtone.

Hoop Earrings

Approx. 2" diam. Pierced. **145-454**

reg. \$12.99

\$9.99

Statement Necklace

Bib style, 16 1/2" L with 3 1/2" extender and lobster closure.

145-416 reg. \$39.99

\$29.99

Stretch Bracelet Set

One size fits most.

145-469

reg. \$19.99

\$14.99

the set

of 3



NEW! LIMITED EDITION

Night Shimmer Collection

Black and grey glass beads and pearlesque beads set in silvertone.

Drop Earrings

Approx. 2" L.
Pierced.

154-474
reg. \$9.99
\$7.99

Necklace and Earrings Set

Necklace, 28" L with 3 1/2" extender.
Earrings, studs.
Pierced.

154-201
reg. \$22.99
\$16.99 the set

Statement Ring

Silvertone with black stones.

Sizes:
6 **154-512**
8 **154-527**
10 **154-603**
reg. \$12.99
\$9.99

Coil Bracelet

Mix of glass beads and faux pearls.
One size fits most.

154-455
reg. \$16.99
\$12.99

Enjoy these special prices and exclusive offers only when you shop with an Avon Representative.

Set to
DAZZLE

Winter Wonderland Collection

Clear, blue, hematite and opalesque glass stones set in goldtone.

Necklace and Earrings Set

Necklace, 16 1/2" L with 3 1/2" extender.
Lobster closure.
Earrings, approx. 1/2".
Pierced.

154-641
reg. \$32.99
\$24.99 the set

Statement Ring

Sizes:
6 **154-785** 8 **154-790** 10 **155-140**
reg. \$12.99
\$9.99

Bejeweled Bracelet

7 1/4" L with 1" extender.
Lobster closure.
154-680
reg. \$16.99
\$12.99

necklace and earrings set

necklace and earrings set



34
*gorgeous
shades!*



NEW! LIMITED EDITION

fmg Glimmer Glow Up, Glim Up Mega Palette

Take your makeup creativity to the max. Versatile palette is packed with buttery shadows and glowy blush. Create effortless, head-turning day and night looks with richly pigmented, universally flattering shades, enriched with vitamin E. Comes in gift box.

Includes:

30 eyeshadows, .846 oz. total net wt.

4 blushes, .25 oz. total net wt.

Mirror and applicator.

051-788 reg. \$45

\$22

Holiday,
STARRING YOU!



STARRY NIGHT



NEW! LIMITED EDITION

fmg Glimmer Starry Night Eye Palette

A luxurious palette with 16 universally flattering shades, inspired by a dazzling, starry night sky. Rich matte, satin and shimmer finishes. Long-wearing, highly pigmented shadows glide smoothly and blend easily to create an array of versatile, gorgeous eye looks. Comes in gift box. .37 oz. total net wt. **051-955 reg. \$21 \$17**

Holiday Craves Set
Satisfy your cravings with this set of five decadent gourmand lip glosses. Nourishing formula infused with moisturizing vitamin E, provides a kiss of ultra-shiny color. Paraben-, sulfate-, talc-free. Comes in gift box. Each, .3 fl. oz.

Includes shades:
Pumpkin Latte
Salted Caramel
Holiday Exclusive!
Golden Sugar Cookie
Cherry Creamsicle
Strawberry Glaze
051-902 reg. \$45 \$25
the 5-piece set

Enjoy these special prices and exclusive offers only when you shop with an Avon Representative.



NEW!
LIMITED
EDITION

Holiday TIPS



fmg Glimmer Gel Nail Stickers
Upgrade your classic manicure with some added glitz and glam. Create the perfect finishing touch to your favorite holiday looks with these easy-to-use glossy gel nail stickers. Includes 22 stickers.
Holly Berry 052-067
Frosted Sparkle 051-993
reg. \$10
\$8 each

Enjoy these special prices and exclusive offers only when you shop with an Avon Representative.

32 | C25



Contents not included.

Holiday Beauty Caddy
All your tools at the ready for every holiday look. Dark blue with gold star accents. Removable inside dividers, clear plastic pockets and lattice elastic straps. Folds up for storage. 9⁵/₈" L x 5⁵/₈" W x 5¹/₈" H. Polyester, PVC. **052-090** reg. \$23
\$19

Holiday BRUSH UP

Essential Mini Brush kit
Features five essential mini-size brushes and a luxurious faux-leather case, embossed with stars, to get holiday-beautiful while on the go! Case: PU outer with lining. Brushes: synthetic bristles, aluminum, plastic.

Brush Kit includes:
Powder brush, 3⁷/₈" L.
Eyeshadow brush, 3³/₄" L.
Concealer brush, 3³/₄" L.
Large concealer brush, 3³/₄" L.
Angle Eyeliner brush, 3⁵/₈" L.
Travel case (closed), 5" L x 3¹/₄" W.
052-086 reg. \$30
\$23 the 6-piece set



C25 | 33

Body Mist
With aloe vera extract,
leaves skin feeling cooled
and soothed. 8 fl. oz.
052-530 reg. \$18
\$13.99

Body Lotion
With shea butter
and vitamin E.
Skin feels soft
and smooth. 8 fl. oz.
052-401 reg. \$17
\$13.99

Rub here to
experience
Peppermint
Delight



AVON
Senses

**Peppermint
Delight**

BUBBLE BATH
BAIN-MOUSSE
24 fl. oz.
296 ml / 10 fl. oz.

**Peppermint
Delight**

BODY LOTION
CRÈME POUR LE CORPS
296 ml / 10 fl. oz.

AVON
Senses

**Peppermint
Delight**

BODY MIST
BRUINE POUR LE CORPS
296 ml / 10 fl. oz.

Avon Senses Peppermint Delight

HOLIDAY COLLECTION

'Tis the season to indulge in this magical peppermint fragrance accented with creamy vanilla, white chocolate, chilled raspberries and cool freesia. Skin feels delightfully scented.

Bubble Bath
Luxurious,
refreshing
bubbles. 24 fl. oz.
052-310 reg. \$11
\$7.99

Shower Gel
With moisturizing
glycerin and
cleansers derived
from coconut. 10 fl. oz.
052-397 reg. \$17
\$13.99

**HOLIDAY
HAND CREAM**
Each, 1.5 fl. oz.
reg. \$3
\$1.99 each

**A. Avon Care
Vita Moist
054-241**

**B. Skin
So Soft
Radiant
Moisture
054-275**

**C. Moisture
Therapy
Intensive
Healing &
Repair**
Fragrance-free.
054-280

**D. Avon Care
Silicone Glove
Protective
054-256**

**HOLIDAY
LIP BALM**
Each, .14 oz. net wt.
reg. \$2
\$1.49 each

**E. NEW!
Ginger Latte
054-237**

**F. NEW!
Peppermint
Mocha
054-218**

**G. Sugar Cookie
052-655**

**H. Buttercream
053-408**

**J. Moisture
Therapy Intensive
Healing & Repair
Moisturizing
Lip Treatment Stick
054-294**

**K. Avon Care
Care Deeply
2022 Lip Balm
with Aloe**
Designed with a
12-month calendar.
054-260



*great stocking
stuffers!*

Treat your ELF



Enjoy these special prices and exclusive offers only
when you shop with an Avon Representative.

**Elastine PropoliThera
Honey Me Smooth
Hair Kit**

Nourish hair with the bee goodness of honey, propolis extract and royal jelly for healthy-looking body and shine. Comes in gift box. Includes:

- Damage Repair Shampoo, 1.69 fl. oz.
- Damage Repair Conditioner, 1.69 fl. oz.
- Four Rejuvenating Hair Oil Serum Packettes, each, .1 fl. oz.

**054-351 reg. \$15.99
\$12.99**
the 6-piece kit



4
packettes
included!

All Over JOY



**Physiogel
Daily Moisture Therapy
Holiday Set**

With BioMimic Technology, it works naturally with skin, helping to replenish lost lipids to help strengthen your moisture barrier so your skin feels less dry and sensitive. Comes in gift box.

- Includes:
- Facial Lotion, 1.7 fl. oz.
 - Body Lotion, 1.7 fl. oz.
 - Facial Dermo-Cleanser, 1.7 fl. oz.

**054-366 reg. \$28.99
\$22.99**
the 3-piece set

Enjoy these special prices and exclusive offers only when you shop with an Avon Representative.

NEW! LIMITED EDITION



**Skin So Soft Holiday
Bonus-Size Bath Oil**

Locks in hydration during or after a bath or shower. With jojoba oil. Fresh herbal scent.

**25 fl. oz.
054-313
reg. \$30
\$19.99**

GIVE *Brilliantly*



Isa Knox LXNEW Platinum Serum Gift Set
 Our full-size oil serum, plus a travel-size day and eye cream, are infused with firming hibiscus extract, rejuvenating peptides and soothing madecassoside (aka cica), to help give skin a visible lift and more youthful look. Comes in gift box. Includes:
 Sculpting Oil Serum, 1.35 fl. oz.
 Sculpting Day Cream, .84 fl. oz.
 Sculpting Eye Cream, .16 fl. oz.
054-495 reg. \$91
\$50
the 3-piece set

Enjoy these special prices and exclusive offers only when you shop with an Avon Representative.

NEW LIMITED EDITION

JUMBO SIZE
Anew Ultimate Multi-Performance Day Cream Broad Spectrum SPF 25
 Visibly diminish wrinkles and improve texture, tone and clarity while helping defend skin against damaging UV rays. 2.6 oz. net wt. **054-438 reg. \$52**

JUMBO SIZE
Anew Platinum Day Cream Broad Spectrum SPF 25
 Lift and firm the look of skin while you help defend against damaging UV rays. 2.6 oz. net wt. **054-480 reg. \$52**
\$29.99 each



NEW! JUMBO SIZES
Get 50% more than our regular full sizes!

NEW! LIMITED EDITION

LYRD Travel Gift Set

A trio of floral delights, ready for holiday travel! Each, .3 fl. oz. Comes in gift box.

Includes:
HOLIDAY EXCLUSIVE!
LYRD Oud Rose Eau de Parfum
warm & indulgent
Decadent notes of spicy saffron, romantic rose and velvety patchouli.

LYRD Sparkling Neroli Eau de Parfum
fresh & vibrant
A blend of bergamot, sparkling neroli and warm musk.

LYRD Artisan Santal Musk Eau de Parfum
warm & exotic
A blend of Indian sandalwood and white musk.

059-167 reg. \$61
\$41 the
3-piece set



Holiday **SAMPLER**



Rare Pearls Gift Set
warm & dreamy

Timeless and classic. Indulge in the scent of Rare Pearls. Enjoy the radiant blend of shimmering magnolia, white pepper and creamy rosewood. Comes in gift box.

Includes:
Eau de Parfum, 1.7 fl. oz.
Body Lotion, 6.7 fl. oz.
059-152 reg. \$35
\$23
the 2-piece set

Starry **SCENTIMENTS**

Haiku Intense Gift Set
fresh & clean

Create a sense of harmony with Haiku Intense. Indulge in this potent floral fragrance, evoking the serenity of a beautiful garden oasis, blooming with Japanese yuzu, delicate muguet and blonde woods. Comes in gift box.

Includes:
Eau de Parfum, 1.7 fl. oz.
HOLIDAY EXCLUSIVE!
Votive Candle, 10 hours of burn time, 2.25 oz. net wt. Glass jar. Assembled in the USA.
056-392 reg. \$49
\$36.99
the 2-piece set



Never leave burning candles unattended. Keep away from children and pets.

Enjoy these special prices and exclusive offers only when you shop with an Avon Representative.

NEW! LIMITED EDITION



Enjoy these special prices and exclusive offers only when you shop with an Avon Representative.



Gent's Holiday Gift Set
Enjoy a classic grooming routine with our favorite picks for him! Comes in gift box.

Includes:
Mesmerize Black Eau de Toilette
warm & intoxicating
A fusion of pepper, addictive nutmeg and warm tonka bean. 1.7 fl. oz.

Gentology for Men Herb & Aloe 2-in-1 Hair and Body Wash, 10.1 fl. oz.

Gentology for Men Herb & Aloe Total Care Moisturizer, 5.1 fl. oz.

059-186 reg. \$57
\$38 the 3-piece set

Scent ye MERRY GENTLEMEN



Studio 1886 Legendary Gift Set
fresh & aromatic
Enhance your grooming routine with our exclusive Studio 1886 Legendary trio, the perfect balance of confidence and strength. Vibrant lemon eases into crisp lavender for a fresh, faceted opening. Notes of patchouli and salted amber provide complexity and depth, revealing exquisite ingredients for a memorable fragrance experience. Comes in gift box.

Includes:
Studio 1886 Legendary, 1.7 fl. oz.
All-in-One Hair & Body Wash, 2.5 fl. oz.
All-in-One Gel Moisturizer, 2.5 fl. oz.
811-913 reg. \$70
\$52 the 3-piece set

Not a CREATURE was Stirring

❖ **Woodland Owl Ornament***
Ollie the Owl is ready to hang
out in your Christmas tree.
2⁷/₈" diam. Mercury glass finish
with sequins. Imported.
543-220
reg. \$16.99
\$12.99



❖ **Woodland Snow Globe***
Peaceful woodland scene
with reindeer grazing as
glittery snow gently falls.
Globe sits on a birch-like
base. 5¹/₈" H x 4" diam.
Glass, polyresin. Imported.
543-382
reg. \$32.99
\$24.99


Enjoy these special prices and
exclusive offers only when you
shop with an Avon Representative.



NEW! LIMITED EDITION

PLAYS THE FOLLOWING TUNES:

- "Jingle Bells"
- "We Wish You a Merry Christmas"
- "Silent Night"
- "Deck the Halls"
- "Joy to the World"
- "The First Noel"
- "Hark! The Herald Angels Sing"
- "O, Christmas Tree"



❖ **Snowflake Light-Up Tree***
Sculpted tree with filigree design sparkles
with shimmering lights. Festive décor for
the mantel or windowsill. On/off switch.
Takes two AA batteries (not included).
9¹/₄" L x 2¹/₄" W x 13⁷/₈" H. Wood. Imported.
543-200
reg. \$42.99
\$29.99 

❖ **Gifts from Santa Snow Globe Lantern***
Gilded lantern houses a festive scene
with Santa delivering gifts as glittery
snow falls. Switch for lights, lights with
sound or off. Takes three AA batteries
(not included). 6¹/₂" L x 3⁵/₈" W x 10¹/₂" H.
Plastic. Imported. **543-765**
reg. \$59.99
\$44.99   

Don't forget the batteries! AA and AAA sizes available on page 224.

*For decorative use only. Keep out of reach of children.

NEW! LIMITED EDITION

Come All Ye FAITHFUL



❖ **Angel of Peace Light-Up***

Hark! The herald angels sing! With her hand over her heart, our angel stands over 9" tall and shimmers with iridescent stars on her gown. Flameless light flickers inside. On/off switch with timer. Takes three AAA batteries (not included). 4³/₄" L x 3³/₄" W x 9¹/₄" H. Porcelain. Imported. **543-746**

reg. \$44.99
\$34.99



❖ **Peace Nativity Light-Up**

Greet the season with the Holy Family aglow with peace. On/off switch. Button cell battery (included). 8³/₄" L x 2⁵/₈" W x 5¹/₂" H. Resin. Imported. **543-397**

reg. \$32.99
\$24.99



❖ **Glowing Light-Up Church***

Our cute church is shimmering with an iridescent holiday glow. Flameless light flickers inside. On/off switch. Button cell battery (included). 4⁷/₈" L x 3¹/₂" W x 5³/₄" H. Porcelain with bottle brush trees. Imported. **543-401**

reg. \$39.99
\$29.99



❖ **Glowing Light-Up Tree Set***

Create a winter wonderland with a pair of twinkling trees with iridescent starry sparkle. Light shines through and projects onto wall. On/off switch. Button cell battery (included). Small tree: 2³/₄" L x 2³/₄" W x 5³/₄" H; large tree: 3¹/₈" L x 3¹/₈" W x 7¹/₄" H. Porcelain. Imported. **543-640**

reg. \$44.99
\$34.99 the 2-piece set



Don't forget the batteries! AA and AAA sizes available on page 224.

*For decorative use only. Keep out of reach of children.

Enjoy these special prices and exclusive offers only when you shop with an Avon Representative.

All is Calm, ALL IS BRIGHT



set of 3

❖ Starry Night 2021 Pewter Ornament

Continue the tradition! Trim your tree with our annual collectible ornament, dated 2021. Christmas star with acrylic stones. Embossed with the Avon Fine Collectibles logo on back. Includes velvet keepsake pouch and easy-to-hang tassel. Approx. 4" diam. Metal, acrylic. Imported. **073-790**

reg. \$19.99
\$14.99



48 | C25


❖ Nativity Ornament Set

Trio of ornaments depicting the nativity with the Holy Family, shepherd and wise men. Each, 3³/₄" H x 3¹/₈" diam. Clear glass with decals. Imported. **543-750**

reg. \$25.99
\$19.99 the 3-piece set

❖ Starry Night Light-Up Ornament

Dark-blue ornament with glowing stars. Light shines through and projects onto wall. On/off switch. Button cell battery (included). 4¹/₂" H x 3³/₄" diam. Glass, metal. Imported. **073-493**

reg. \$12.99
\$9.99 


Enjoy these special prices and exclusive offers only when you shop with an Avon Representative.

NEW! LIMITED EDITION



❖ Starry Night Luminary*

Light-up holiday scene luminary with flameless light that shines through and projects onto wall. No assembly required. On/off switch. Takes three AA batteries (not included). 8³/₈" H x 4⁵/₈" diam. Plastic. Imported. **072-793**

reg. \$25.99
\$19.99 

Don't forget the batteries! AA and AAA sizes available on page 224.

*For decorative use only. Keep out of reach of children.

❖ Starry Night Flameless Candle Set

A constellation of glittery stars. Faux flame gives illusion of flickering candle. On/off switch. Takes two AA batteries (not included). Small: 5" H x 3" diam. Large: 6" H x 3" diam. Wax, plastic. Imported.

059-205 reg. \$29.99
\$22.99

the 2-piece set 

C25 | 49

Holly Jolly HOLIDAYS

❖ Santa & Friends Light-Up Floor Décor*

Season's greetings from Santa and his festive friends! Cheeks light up on each character. On/off switch. Takes three AA batteries (not included). 27" H. Weighted base. Polyester.

Imported. **807-565**
reg. \$58.99
💡 **\$44.99**

Don't forget the batteries! AA and AAA sizes available on page 224.

*For decorative use only. Keep out of reach of children.



❖ Christmas Shelf Sitter*

Santa's watching, so is his snowman buddy. Cheeks light up on each character. On/off switch. Takes two AA batteries (not included). 19" H. Polyester. Imported.

Snowman 807-460
Santa 807-550
reg. \$32.99
💡 **\$24.99 each**

Enjoy these special prices and exclusive offers only when you shop with an Avon Representative.

NEW! LIMITED EDITION

All Signs Point to CHRISTMAS



❖ North Pole Directional Outdoor Sign

Do you know the way to holiday? Santa's sleigh, Reindeer Way and Elf Village are all waiting to welcome you to the North Pole. 10" L x 4 1/4" W x 32" H. Weighted iron base, metal signs and pole. Imported. **807-417**
reg. \$54.99
💡 **\$42.99**

❖ Santa Hat Outdoor Light-Up

Santa's hat lights the path for holiday guests. Includes yard stakes. Light with timer and outdoor battery case. On/off switch. Takes three AA batteries (not included). 18" H x 7" diam. Iron, polyester. Imported. **807-455**
reg. \$49.99
💡 **\$39.99 the set of 3**

Set the SCENE



❖ **2021 Holiday Market Village Set***
Our vintage village market is all decked out for the holidays! Gift shop, Christmas tree and cookie vendors light up. On/off switch. Takes six AAA batteries (not included). Polyresin. Imported.
Includes:
Three shops, each, 4½" H.
Four figurines
Two lamp posts
Two bottle brush trees
807-330 reg. \$58.99
\$44.99 
the 11-piece set



NEW! LIMITED EDITION

❖ **Santa's Toy Shop Light-Up***
Santa's toy shop is open for business! Decked out in twinkling string lights and street lamp. Interior Christmas tree spins. On/off switch. Takes three AA batteries (not included). 6¾" L x 5" W x 9¼" H. Plastic. Imported. **807-311 reg. \$49.99**
\$39.99   

Don't forget the batteries! AA and AAA sizes available on page 224.
*For decorative use only.
Keep out of reach of children.

TOY SHOP and CAROUSEL
play the following tunes:


- "Jingle Bells"
- "We Wish You a Merry Christmas"
- "Silent Night"
- "Deck the Halls"
- "Joy to the World"
- "The First Noel"
- "Hark! The Herald Angels Sing"
- "O, Christmas Tree"

❖ **Christmas Carousel Light-Up***
Take a nostalgic spin on our vintage carousel. Riders and carousel horses take their turn around. Top lights up. On/off switch. Takes three AA batteries (not included). 7" L x 7" W x 9" H. Plastic. Imported. **807-269 reg. \$58.99**
\$44.99   




Enjoy these special prices and exclusive offers only when you shop with an Avon Representative.



A. ♦ Classic Santa Light-Up*
Traditional Santa glows through the season! On/off switch. Takes three AAA batteries (not included).
4³/₈" L x 3⁷/₈" W x 10⁵/₈" H. Mercury glass. Imported.
807-125
reg. \$39.99 
\$30.99

B. ♦ Mini Christmas Ceramic Light-Up*
Festive friends to light up the season. Hat and belly lights can be seen through cutouts. On/off switch. Button cell battery (included).
Santa: 3¹/₂" L x 3⁷/₈" W x 5" H. Snowman: 2³/₄" L x 3" W x 4⁷/₈" H. Ceramic. Imported.
Snowman 807-087
Santa 807-091
reg. \$19.99 
\$14.99 each

C. ♦ Santa's Coming to Town Light-Up*
Santa's on his way in a cute vintage pickup, with Christmas tree lights all aglow. On/off switch. Takes three AA batteries (not included).
10³/₈" L x 5¹/₄" W x 6³/₄" H. Porcelain. Imported.
807-106
reg. \$44.99 
\$34.99

D. ♦ Countdown to Christmas Calendar*
Move Santa's car each day to count down to the big day!
13³/₄" L x 2¹/₈" W x 4³/₄" H. Wood. Imported.
807-130
reg. \$12.99 
\$9.99




Don't forget the batteries! AA and AAA sizes available on page 224.
*For decorative use only. Keep out of reach of children.

Enjoy these special prices and exclusive offers only when you shop with an Avon Representative.

SANTA'S Coming to Town



♦ Snowy Day Sledding Tabletop Scene*

Race to the bottom! Our snowy day townsfolk have their hats, gloves and sleds. Houses light up. Sledgers move up and downhill. On/off switch. Takes three AA batteries (not included).
8¹/₂" L x 5¹/₈" W x 6⁷/₈" H. Plastic with bottle brush trees. Imported.
807-110
reg. \$58.99   
\$44.99

PLAYS THE FOLLOWING TUNES:

- "Jingle Bells"
- "We Wish You a Merry Christmas"
- "Silent Night"
- "Deck the Halls"
- "Joy to the World"
- "The First Noel"
- "Hark! The Herald Angels Sing"
- "O, Christmas Tree"



GOTTA GET IT!

- ❖ Time to Shine Set
 - Anew Platinum Night Cream Try-It Size, .5 oz. net wt.
 - Glimmershadow Liquid Eyeshadow in Pink Topaz, .07 fl. oz.
 - Avon True Color Glimmersticks Diamonds Eye Liner in Black Ice, .01 oz. net wt.
 - Wash-Off Waterproof Mascara in Black, .21 oz. net wt.
- 612-985



ONLY \$10

WITH ANY \$40 PURCHASE
\$43 VALUE

Due to unforeseen demand, Avon reserves the right to substitute products of equal or greater value.

THE BEAUTY COLLECTIVE

We're dedicated to bringing you a portfolio of *world-class brands*, each with a curated collection of the *most innovative, on-trend beauty products* available. Whether you're looking for prismatic primers, luxury makeup or cutting-edge skin care, we've got *the best of the best.*

VDL Lumilayer Primer

Violet Lumilayer pigment visibly brightens, plumps and sculpts skin for volume. Visibly blurs pores and enhances the wear of foundation. Can be worn alone, under foundation or as a highlighter. 1 fl. oz. **680-911 reg. \$40 \$32**



VDL Satin Veil Primer

Soft-veiling polymers instantly blur the appearance of pores and fine lines. Mattifies shine. Infused with prune water and rose enfleurage oil. 1 fl. oz. **681-793 reg. \$40 \$32**



VDL Lumilayer Primer Fresh

Over 70% moisturizing essence for deep hydration and smooth skin. Sparkling blend of pearls that absorb and reflect light to create a warm, radiant glow. 1 fl. oz. **681-239 reg. \$40 \$32**



VDL Lumilayer Rosy Perfect Primer

For a velvety smooth, healthy-looking and radiant complexion. Instantly moisturizes, blurs pores and corrects skin tone. Locks down and extends the wear of base makeup. Infused with skin-caring damask rose water, rose enfleurage oil, and lady's mantle. 1 fl. oz. **514-884 reg. \$40 \$34**



VDL Lumilayer Metal Cushion Primer

Infused with skin-brightening vitamin C and niacinamide. Visibly blurs pores, highlights, primes and perfects skin. Travel-friendly compact includes cushion refill and two applicators. Each cushion, .52 oz. net wt. **681-721 reg. \$50 \$40**



PRIME TIME

Stay-fix system extends the wear of eye makeup for an all-day creaseless, smudge-proof vivid look.



SHIMMER
110-996
GREAT ALONE OR TO GIVE YOUR SHADOW EXTRA OOMPH.

EXPERT COLOR PRIMER FOR EYES
BASE POUR LES YEUX
EXPERT COULEUR

SERENITY
110-977
GREAT FOR MATTE SHADOWS OR TO BRIGHTEN DULL EYES.

EXPERT COLOR PRIMER FOR EYES
BASE POUR LES YEUX
EXPERT COULEUR

EXPERT COLOR PRIMER FOR EYES
BASE POUR LES YEUX
EXPERT COULEUR

ORIGINAL
110-317
GREAT FOR YOUR EVERYDAY BASIC MAKEUP ROUTINE.

VDL Expert Color Primer for Eyes

Preps lids for smoother application and enhances shadow shades for a more vibrant, brighter result. Infused with skin-caring Tahitian black pearl powder and silk protein. .22 oz. net wt. **\$24 \$20**

LIP BALM REIMAGINED

The perfect balance of delicate color and lip-softening care.

VDL Expert Color Lip Cube Marble Glow

80% moisturizing oil instantly conditions and adds long-lasting shine. Unique cubic-edge angled design with two-tone marble layers provides precise application. .12 oz. net wt. reg. \$28 **\$22**

Blooming Pink
628-772

Mint Favor (Colorless with menthol)
628-741

Blessing Coral
628-737

VDL Tint Bar Triple Shot

All-in-one lip primer, balm and tint. Tri-color design creates a multi-hued layer of shiny, sheer, delicate color for softer, fuller-looking lips. With moisturizing royal jelly and nourishing ester oil. Soft glowy, glossy finish. .12 oz. net wt. reg. \$23 **\$18**

Triple Pink
628-775

Triple Red
628-756

Triple Peach
628-813



SO JELLY

Multi-use stick for cheeks and lips gives a soft dewy flush of color.

Rose Flake
(ultrafine pearl)
651-184



VDL
CREAMY STICK
JELLY
7.3g NET WT / 0.25 oz.

Gretel
651-218



VDL
CREAMY STICK
JELLY
STICK GEL
CREMELIX
7.3g net wt. 0.25 oz.

Riding Hood
651-203



VDL
CREAMY STICK
JELLY
7.3g NET WT / 0.25 oz.

Floege
651-170



VDL
CREAMY STICK
JELLY
7.3g NET WT / 0.25 oz.

Enjoy these special prices and exclusive offers only when you shop with an Avon Representative.

VDL Creamy Stick Jelly

Glides on and blends effortlessly. Creamy jelly-soft color. Buildable, sheer to medium coverage with a dewy finish. Formula infused with antioxidants, botanical extracts and moisturizing shea butter. .25 oz. net wt. reg. \$31 **\$25**

PHYSIOGEL

HYPOALLERGENIC

CALMING RELIEF

TRIPLE RELIEF: •Anti-dryness
•Anti-itchiness •Anti-irritation



A.I. Cream for face

Facial cream soothes red, itchy skin associated with dryness with instant and long-lasting relief. 3.3 fl. oz. **096-865** reg. \$42 **\$33.99**

A.I. Lotion for face

Facial lotion for instant and long-lasting, soothing relief of redness and itching associated with dry skin so skin feels less sensitive. Light cream emulsion. 6.7 fl. oz. **096-406** reg. \$42 **\$33.99**

BIOMIMIC TECHNOLOGY™

It works naturally with skin, helping to replenish lost lipids to help strengthen your moisture barrier so your skin feels less dry and sensitive. Clinically proven moisturization.

PHYSIOGEL

HYPOALLERGENIC

DAILY MOISTURE THERAPY

TRIPLE ACTION: •Repair •Restore •Hydrate



Facial Cream

Day cream with long-lasting moisture for normal to dry sensitive skin.

5.1 fl. oz. **847-511** 2.5 fl. oz. **847-507**
reg. \$42 reg. \$29
\$33.49 **\$22.99**

Intensive Cream for face

Rich daily facial cream provides long-lasting, intensive moisturization that works instantly to quickly relieve very dry and sensitive skin. 3.3 fl. oz. **093-608** reg. \$40 **\$31.99**



Dermo-Cleanser for face

Mild and gentle, soap-free facial cleanser for dry and sensitive skin. Appropriate for frequent use, with or without water (can apply with cotton pad). 5 fl. oz. **094-384** reg. \$24 **\$18.99**



Body Lotion

For dry and sensitive skin. Lightweight, quickly absorbed lotion with the feel of a light emulsion cream. 6.7 fl. oz. **096-258** reg. \$30 **\$23.99**

Facial Lotion

For normal/dry sensitive skin. Lightweight, quickly absorbed lotion with the feel of a light emulsion cream. 6.7 fl. oz. **847-492** reg. \$32 **\$25.99**



*Born in Europe.
Powered by science.
Dermatologist-
recommended
worldwide*

belif in the glow of holiday magic



belif holiday magic of glow set a full-size fave and two mini sizes

Limited-edition kit includes:

- The True Cream Moisturizing Bomb, 1.69 fl. oz.
- Aqua Bomb Sleeping Mask .33 fl. oz.
- Moisturizing Eye Bomb, .16 fl. oz.

Comes in a festive holiday gift box with a fun cutout window.

087-371 reg. \$42

\$38

3-piece set



belif holiday magic of glow on-the-go travel kit five must-have mini sizes

Limited-edition kit includes:

- The True Cream Aqua Bomb, .33 fl. oz.
- The True Cream Moisturizing Bomb, .33 fl. oz.
- Aqua Bomb Jelly Cleanser, 1.01 fl. oz.
- The True Serum Revitalizing Niacinamide/Amino Acids Solution 10%, .16 fl. oz.
- The True Serum Resurfacing PHA/AHA 10%, .16 fl. oz.

Comes in a festive holiday gift box with five perforated windows.

087-405 reg. \$28

\$23

5-piece kit

Enjoy these special prices and exclusive offers only when you shop with an Avon Representative.



70% increase
in hydration*



the true cream aqua bomb

For dryness, dullness & uneven texture
This ultralight, water-based, refreshing gel cream bursts upon application to instantly cool skin and release a flood of weightless moisture. Helps visibly improve skin elasticity. Skin looks healthy, smooth and supple. Suitable for sensitive skin.
Full size, 1.68 fl. oz. **446-307 reg. \$42 \$38**
Try-it size, .84 fl. oz. **446-618 reg. \$24 \$22**



aqua bomb mist

For an extra boost of hydration
Ultrafine, lightweight cooling mist hydrates skin for a radiant, healthy glow. With chickweed, an herb known to soothe skin.
Full size with refill. Each, 2.02 fl. oz. **514-721 reg. \$38 \$34 set of 2**



moisturizing eye bomb

For dryness, loss of elasticity and firmness
Lightweight, refreshing eye cream cools on contact. Helps keep eye area looking firm, resilient and smooth. .84 fl. oz. **445-478 reg. \$53 \$48**



aqua bomb sleeping mask

For dull, dry, fatigued skin
Locks in moisture with unique jelly-pudding texture! Replenishes with explosive hydration for smoother, more supple-looking skin and a healthy glow. 2.53 oz. net wt. **514-717 reg. \$38 \$34**

84% of people said tired skin felt soothed and calmed in just 7 days.**



the true cream aqua bomb aloe

For redness, irritation and dryness
A moisturizing gel-cream with aloe vera extract to instantly soothe skin, plus a multi-level blend of hyaluronic acid that penetrates different layers for intense hydration, and vitamin E to visibly smooth texture and even tone.
Full size, 1.69 fl. oz. **788-284 reg. \$42 \$38**

26 hours of intense hydration*



the true cream moisturizing bomb

For dryness, loss of elasticity & firmness
A lightweight yet indulgent cream, with a comforting, cushiony, whipped texture, envelops skin with intense, long-lasting moisture. Skin looks and feels smooth, supple and deeply nourished. Suitable for sensitive skin.
Full size, 1.68 fl. oz. **443-862 reg. \$42 \$38**
Try-it size, .84 fl. oz. **444-118 reg. \$24 \$22**

aqua bomb jelly cleanser

For dryness, dullness and uneven texture
Jelly to foam. Amino acids and glycerin-based cleansing agents gently remove makeup without stripping skin of moisture.
5.41 fl. oz. **445-353 reg. \$31 \$28**

- NO sulfates**
- NO synthetic dyes**
- NO fragrances**
- NO mineral oil**
- NO animal products**
- NO parabens**
- NO phthalates**



*Based on a clinical study.
**Based on a consumer-perception study.

Enjoy these special prices and exclusive offers only when you shop with an Avon Representative.



**the true serum
resurfacing
PHA/AHA 10%**

For dullness and uneven tone and texture
With PHA/AHA 10%, helps gently and effectively exfoliate dead surface skin cells to visibly improve skin tone and texture and reveal a fresher, more youthful appearance. With energizing honeysuckle. Apply after cleansing. Follow with any belif moisturizer. Full size, 1.69 fl. oz. **927-769 reg. \$55 \$45**

**the true serum
revitalizing
niacinamide/amino
acids solution 10%**

For elasticity and loss of firmness and the look of pores
With niacinamide, amino acids solution and a special blend of herbs, helps shrink the look of pores. Rose hip oil helps visibly firm. Apply after cleansing. Follow with any belif moisturizer. Full size, 1.69 fl. oz. **927-716 reg. \$55 \$45**

energizing fragrances
from belif



**the woods
eau de parfum**

fresh + sweet
Invigorating floral greens. A burst of lemon zest and dewy bamboo, with fresh-picked pear blossom and water lily, wrapped in the sophisticated warmth of amber and musk for a fresh, revived feeling. 1.7 fl. oz. **012-020 reg. \$55 \$45**



**the garden
eau de parfum**

fresh + vibrant
Sparkling bergamot and dewy spring blossoms are wrapped in white musk for an unforgettable fragrance with a bright, buoyant feeling. 1.7 fl. oz. **589-485 reg. \$55 \$45**

SKIN CARE

*Want to see fewer wrinkles?
More lift? Or just a radiant complexion?*
Our high-performance collections can help you meet (+ exceed) your **#SKINCAREGOALS.**



see **firmer,**
smoother skin
in just **one week***

NEW

Isa Knox LXNEW Platinum Sculpting Oil Serum
Hibiscus extract-infused serum, with collagen-boosting peptides and rejuvenating antioxidants, helps visibly smooth wrinkles and tighten facial contours for a firmer, smoother, more lifted look. Hypoallergenic. 1.35 fl. oz. **318-720 reg. \$56 \$44.99**

NEW

Isa Knox LXNEW Platinum Sculpting Day Cream
Infused with moisturizing hibiscus extract and smoothing ceramide, visibly tightens facial contours and reduces wrinkles for a firmer, smoother, more sculpted look. Hypoallergenic. 1.7 fl. oz. **318-845 reg. \$50 \$39.99**

NEW

Isa Knox LXNEW Platinum Sculpting Night Cream
With firming hibiscus extract, ceramide, squalane and shea butter, it visibly tightens facial contours and reduces wrinkles for a firmer, smoother, more defined look. Hypoallergenic. 1.7 fl. oz. **318-850 reg. \$50 \$39.99**

NEW

Isa Knox LXNEW Platinum Sculpting Eye Cream
Hibiscus extract-infused formula with hydrating panthenol and revitalizing antioxidants leaves the delicate eye area looking firmer, brighter, more defined. Ophthalmologist-tested. .84 fl. oz. **318-883 reg. \$50 \$39.99**

*Based on a consumer-perception test.

innovative formulas
with organic **hibiscus extract**
help skin look **lifted**
from every angle



Enjoy these special prices and exclusive offers only when you shop with an Avon Representative.



Isa Knox Anew LX Ultimate

Infused with paeonol, our unique extract harvested at its peak from rare peonies in a patented compound specially formulated for a rejuvenated look beyond the ultimate.

Isa Knox Anew LX Ultimate Rejuvenating Day Cream

This multipurpose paeonol-infused day cream visibly reduces wrinkles and improves the look of elasticity, radiance and skin texture. With nutmeg to help visibly even skin tone, and soothe skin. 1.7 fl. oz. **630-900** reg. \$50 **\$39.99**

Isa Knox Anew LX Ultimate Rejuvenating Dual Night Cream

Two-step cream infused with paeonol and macadamia oil. Volume Cream with rice bran extract to help visibly plump skin. Firming Cream with peptides to support production of collagen and elastin. Each, .85 fl. oz. **629-308** reg. \$50 **\$39.99**

Isa Knox Anew LX Ultimate Rejuvenating Eye Serum

Infused with paeonol and niacinamide to help visibly reduce fine lines around the eye area and depuff under-eye bags. 1 fl. oz. **630-915** reg. \$50 **\$39.99**

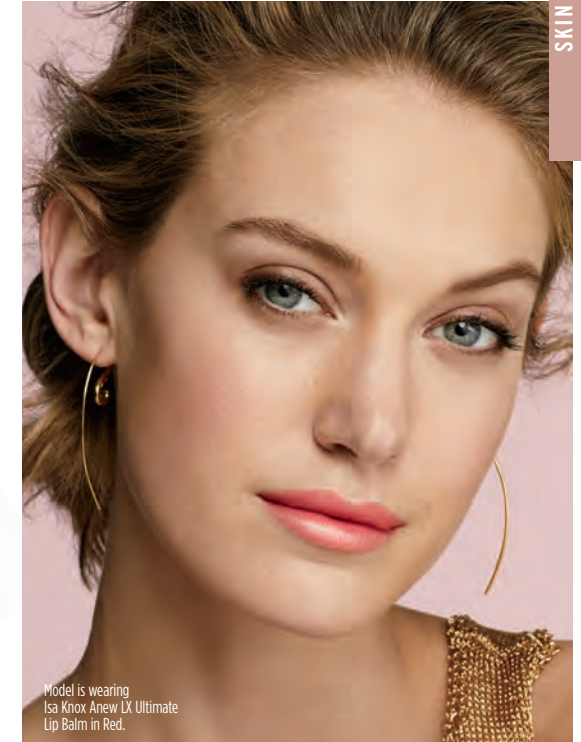
Isa Knox Anew LX Ultimate Rejuvenating Serum

The luxurious serum, infused with paeonol and ceramides, visibly improves elasticity, radiance and skin texture, and reduces the appearance of fine lines and wrinkles for a younger, smoother, firmer look. 1.35 fl. oz. **630-752** reg. \$56 **\$44.99**

Ultra-hydrating gel transforms into a light oil, even dissolving all traces of stubborn makeup.

Isa Knox Anew LX Ultimate Rejuvenating Gel to Oil Cleanser

Premium hydrating facial cleanser, infused with paeonol and blended oils. Upon contact with water, formula becomes a milky emulsion, leaving complexion feeling soft and looking radiant as it dissolves makeup and washes away impurities. 4.2 fl. oz. **755-116** reg. \$20 **\$15.99**



Model is wearing Isa Knox Anew LX Ultimate Lip Balm in Red.

NEW

With glossy oil for silky-smooth lips.

Isa Knox Anew LX Ultimate Lip Balm

Wear alone or over lipstick. Each, .12 oz. net wt. Red **318-974** Pink **318-917** reg. \$25 **\$19.99**



ULTIMATE combats multiple signs of aging

Supreme Dual Elixir
Follow with Advanced Performance Crème.
Serum/Oil, .67 fl. oz. each.
588-421 reg. \$60
\$38.99



Supreme Advanced Performance Crème
With Black Pearl Extract.
See a dramatic difference in deep wrinkles and skin radiance. 1.7 oz. net wt.
442-483 reg. \$60
\$38.99



Multi-Performance Day Cream Broad Spectrum SPF 25
1.7 oz. net wt. 156-993
reg. \$42
\$23.99



Multi-Performance Night Cream
1.7 oz. net wt. 157-162
reg. \$42
\$23.99



Multi-Performance Eye System
Visibly smooths crow's-feet and de-puffs under eyes.
Cream, .5 oz. net wt.
Elixir, .09 oz. net wt.
353-254 reg. \$42
\$23.99



ANEW Ultimate Regimen Set
Includes three full-size moisturizers plus one try-it-size serum.

- **Multi-Performance Day Cream Broad Spectrum SPF 25** 1.7 oz. net wt.
- **Multi-Performance Night Cream** 1.7 oz. net wt.
- **Multi-Performance Eye System** Cream, .5 oz. net wt. Elixir, .09 oz. net wt.
- **Anew Power Serum** .24 fl. oz.

4-PIECE BOXED KIT
885-723
reg. \$128
\$54.99



PLATINUM skin looks lifted and firmer



Day Cream Broad Spectrum SPF 25
1.7 oz. net wt.
064-110 reg. \$42
\$23.99

Night Cream
1.7 oz. net wt.
610-045
reg. \$42
\$23.99

Eye & Lip Cream
Dual applicator.
.5 oz. net wt.
328-072
reg. \$42
\$23.99

Firm and Sculpt Cream for Neck and Chest
Use PM after cleansing.
1.7 oz. net wt. 395-294
reg. \$42
\$23.99

ANEW Platinum Regimen Set
Includes three full-size moisturizers plus one try-it-size serum.

- **Day Cream Broad Spectrum SPF 25** 1.7 oz. net wt.
- **Night Cream** 1.7 oz. net wt.
- **Eye & Lip Cream** .5 oz. net wt.
- **Anew Power Serum** .24 fl. oz.

4-PIECE BOXED KIT 732-639
reg. \$128
\$54.99





glow with it

Our expanded vitamin C collection helps reveal the look of radiance all over every inch of you.

Anew Vitamin C Dry Body Oil

Nourishing plant-based dry body oil with antioxidant vitamins C and E quickly melts into skin to instantly hydrate and visibly brighten skin. Soothing sunflower seed and jojoba oils help keep skin feeling supple. Lightweight. Nongreasy. 3.4 fl. oz. **157-067** reg. \$34 **\$19.99**



Anew Vitamin C Illuminating Body Serum

With antioxidant vitamins C and E, it visibly improves skin texture and boosts radiance. Soothing sunflower seed oil and panthenol (vitamin B5) help skin retain essential moisture. Light-reflecting pigments leave skin looking luminous all over. 6.7 fl. oz. **157-071** reg. \$34 **\$19.99**



After cleansing skin, use alone or after Dry Body Oil to visibly enhance an all-over glow.

Massage in all over body after shower for a silky finish.

VITAMIN C now for all over your body!



Anew Vitamin C Overnight Radiant Mask

With powerful antioxidant vitamins C and E. Visibly improves skin texture and boosts radiance. Contains niacinamide (vitamin B3), known to improve skin tone. Infused with shea butter and sunflower seed oil to help nourish and moisturize. Apply after cleansing, treating and moisturizing. Leave on overnight.

1.7 fl. oz. **157-086** reg. \$36 **\$19.99**



Anew Vitamin C Smoothing Lip Scrub

Gently buffs to smooth lips and preps for moisturizing. Enriched with antioxidant vitamin C and sugar crystals, this gentle scrub removes dead skin cells, revealing lips that look smoother and softer. .7 oz. net wt. **157-727** reg. \$34 **\$14.99**



Anew Vitamin C Overnight Lip Mask

Leave-on lip mask that moisturizes for visibly supple lips overnight. Conditions and treats lips with antioxidant vitamin C and nourishing shea butter. This moisturizing formula visibly improves lip texture. .7 oz. net wt. **157-689** reg. \$34 **\$14.99**

FREE RE:TUNE DAILY ESSENTIALS VITAMIN C (sold on page 101) with any two vitamin C purchases, pages 76-79. **\$25 value**



essential vitamin C family

Reveal the look of natural radiance



**JUMBO SIZE
Anew Vitamin C
Brightening Serum**

Skin looks visibly energized and brightened with the power of 10% pure vitamin C. Use AM and PM. Noncomedogenic. 1.5 fl. oz. **375-930** reg. \$73 **\$31.99**



**50%
MORE serum
than regular
full size**



**Anew Vitamin C
Antioxidant
Lip Treatment**

Nourishes lips with vitamins C and E. Lips look and feel smooth, conditioned...and youthful! .13 oz. net wt. **784-547** reg. \$14 **\$7.99**



**Anew Vitamin C
Brightening
Serum**

1 fl. oz. **936-406** reg. \$44 **\$24.99**

**Anew Vitamin C
Brightening Eye Cream**

Formulated with a powerful combination of vitamin C and niacinamide, our revitalizing eye cream visibly reduces the appearance of dark circles and leaves under-eye area looking brighter and more even-toned. .5 fl. oz. **868-512** reg. \$34 **\$18.99**



**ANEW VITAMIN C
ILLUMINATING PRIMING MOISTURIZER**
ESSENCE MAGAZINE
2021 BEAUTY AWARD WINNER



**Anew Vitamin C
Illuminating Priming Moisturizer**

Fragrance-free. With natural citrus extracts. Use after Brightening Serum. Wear alone or under makeup. 1.7 fl. oz. **868-508** reg. \$34 **\$18.99**



**Anew Vitamin C
Warming Peel**

Dual exfoliation, with vitamin C flakes and natural seeds, gently buffs skin with a warming sensation when activated with water, opening pores to remove impurities. 3.4 fl. oz. **936-425** reg. \$27 **\$15.99**



Enjoy these special prices and exclusive offers only when you shop with an Avon Representative.

FREE RE:TUNE DAILY ESSENTIALS VITAMIN C (sold on page 101) with any two vitamin C purchases, pages 76-79. **\$25 value**





CLEANSE

No need to rinse off.

Anew Hydra Fusion Cleansing Micellar Water
Gently lifts dirt, oil and makeup while boosting hydration. 10.1 fl. oz. 284-933 reg. \$14 **\$8.49**



HYDRA FUSION what your skin's been thirsting for

Anew Hydra Fusion Nighttime Facial Treatment

Visibly plumps skin. Increases moisture by 3X. Relaxing rose scent. 1.7 oz. net wt. 167-030 reg. \$34 **\$18.99**



Anew Hydra Fusion De-Puffing Eye Serum

With caffeine and a cooling ceramic tip. Eyes look and feel refreshed. .5 fl. oz. 283-760 reg. \$34 **\$18.99**



SKIN CARE

Anew Hydra Fusion Gel Cream

Skin appears smoother, refreshed and plumped with lasting hydration. 1.7 oz. net wt. 283-736 reg. \$34 **\$18.99**



Anew Hydra Fusion 1.5% Hyaluronic Acid Serum

Skin looks instantly plumped with our highest concentration of hyaluronic acid, which can hold up to 1,000 times its weight in water for immediate and lasting hydration. Use before moisturizer. 1 fl. oz. 517-740 reg. \$44 **\$24.99**



Anew Hydra Fusion Daily Beauty Defense Broad Spectrum Sunscreen Lotion SPF 50

Featherlight feel. Use after moisturizing. 1.7 fl. oz. 167-026 reg. \$34 **\$18.99**



SPF 50
Avon's highest sunscreen protection

ISA KNOX LXNEW CLEAN

an innovative collection of customized cleansers with skin-nourishing ingredients formulated for your skin type. Free from parabens, synthetic fragrances and dyes, and mineral oil.



Cleansing Brush

Includes one brush head. Requires two AA batteries (not included).

679-266

reg. \$41

\$26.99

Cleansing Brush Refills

Contains two brush heads.

679-270

reg. \$16

\$10.99

Enjoy these special prices and exclusive offers only when you shop with an Avon Representative.



NORMAL, DRY AND COMBINATION SKIN

Balancing Gel Cleanser

Gel to foam. With moisturizing panthenol (vitamin B5). Mild amino acid-based ingredients derived from coconut help gently remove oil and impurities while rebalancing skin.

5 fl. oz. **718-010**

reg. \$12

\$9.99

NORMAL, DRY AND COMBINATION SKIN

Nourishing Cream Cleanser

Infused with panthenol (vitamin B5), rosemary and soapwort extracts. Gently removes impurities and makeup while restoring moisture.

5 fl. oz. **717-990**

reg. \$12

\$9.99

OILY TO NORMAL SKIN

Soothing Whipped Oil Cleanser

Mild amino acid-based ingredients derived from coconut eliminate impurities and excess oil without leaving any residue. Soothes with panthenol (vitamin B5) and aloe.

5 fl. oz. **718-025**

reg. \$16

\$12.99

NORMAL, DRY, COMBINATION AND OILY SKIN

2-in-1 Exfoliating Cleansing Balm

Melts away makeup and impurities. Enriched with panthenol (vitamin B5) and bamboo stem powder.

Use with included spatula. 3.5 oz. net wt. **718-006**

reg. \$30

\$24.99

Super Greens Cooling Gel

Lightweight moisturizer helps soothe and cool skin. Apply thicker, after serum, as a mask to hydrate overnight as needed. 3.04 fl. oz. **953-268** reg. \$37 **\$29.99**

Super Greens Multivitamin Moisture Cream

Locks in essential nourishing moisture. Use daily after cleansing, serums and treatments. 3.04 fl. oz. **953-272** reg. \$37 **\$29.99**



Bakuchiol Eye Cream

Visibly reduces dark circles, fine lines and wrinkles, without irritating the delicate eye area. 1.01 fl. oz. **954-537** reg. \$37 **\$29.99**

Bakuchiol Serum

Concentrated lightweight oil-textured formula penetrates skin's surface to target fine lines, wrinkles and dullness without irritation. 1.01 fl. oz. **954-594** reg. \$44 **\$34.99**



FREE

with any Farm Rx purchase, this page only.

Farm Rx Trial Kit

includes: • **Super Greens Cooling Gel** .33 fl. oz.
• **Super Greens Multivitamin Moisture Cream** .33 fl. oz.
• **Bakuchiol Serum** .17 fl. oz. • **Bakuchiol Eye Cream** .17 fl. oz.

9 out of 10 women said their skin looked smoother and healthier

Hemp-derived facial oil will calm and soothe stressed-out skin as it helps reduce redness and discomfort so skin looks and feels healthy and radiant.



Green Goddess Facial Oil

Use AM/PM, after cleansing and serum. For extra-dry skin, use after cream or gel moisturizers.

- 99% natural ingredients
- 100mg broad-spectrum CBD
- suitable for sensitive skin
- rich in omega fatty acids and vitamin E
- fragrance-free
- vegan
- hypoallergenic
- dermatologist-tested
- no THC

.95 fl. oz. **287-507** reg. \$50 **\$34.99**

Isa Knox LXNEW CLINICAL BOOSTERS

NEW

Isa Knox LXNEW Clinical Booster Microbiome Balance
Visibly reduces redness in 15 minutes so skin looks healthier. 1 fl. oz. **727-978** reg. \$40 **\$22.99**

Balance Booster

Blend of Pre-Biotics, Post-Biotics and Pro-Biotic Extract
Helps balance the skin's microbiome, the protective layer of microflora that lives on the skin and balances skin's pH level.



Moisture Booster

NMF (natural moisturizing factor)
Supplements skin with vital elements naturally found in skin for optimum moisture.
HA (hyaluronic acid) Like a “moisture magnet,” it attracts water to help instantly replenish hydration.
Ceramides Form a protective layer that limits moisture loss.

NEW

Isa Knox LXNEW Clinical Booster Moisture Lock
Instant hydration that lasts for 72 hours and protects moisture barrier for a soft, supple complexion. 1 fl. oz. **727-982** reg. \$40 **\$22.99**



SKIN CARE



Pore-fection Booster

PHA (polyhydroxy acid)
Helps gently remove dead skin cells to visibly smooth, tighten, firm and brighten.
BHA (beta hydroxy acid)
Helps clear clogged pores that create blackheads and whiteheads.

NEW

Isa Knox LXNEW Clinical Booster Pore Perfector
Gently exfoliates to help dissolve dead skin cells and buildup. Visibly reduces pores and blemishes in 15 minutes. 1 fl. oz. **727-963** reg. \$40 **\$22.99**

CLINICAL treat your skin like a professional

the miracle exfoliator glycolic acid

NEW LOOK!

Isa Knox Anew Clinical Revitalize & Reveal Advanced Wrinkle Corrector

In just two weeks, wrinkles appear reduced. 1.7 fl. oz. 729-401 reg. \$40 \$22.99



Isa Knox Anew Clinical Revitalize & Reveal Resurfacing Expert Smoothing Fluid

79% as effective as a pro micro-dermabrasion without the same irritation. 1 fl. oz. 729-416 reg. \$44 \$26.99



Isa Knox Anew Clinical Revitalize & Reveal Extra Strength Retexturizing Peel

Results similar to a 35% pro glycolic peel.* 30 fragrance-free pads. 2" diam. 729-420 reg. \$40 \$22.99

*In 6 out of 8 attributes tested over a 7-week period.

Isa Knox Anew Clinical Revitalize & Reveal Intensive Peel

An intensive resurfacing peel similar to pro acid peels. With AHA (28.3%) and PHA (8.1%) to soothe and moisturize skin as it exfoliates so skin looks more youthful and radiant. 1 fl. oz.

780-025 reg. \$45 \$26.99

super skin smoothers aha + pha



In a clinical study, wrinkles were visibly reduced in 100% of women in just one application.

CLINICAL

the skin plumper collagen

Isa Knox Anew Clinical Collagen Booster Microneedling Polisher

At-home skin-resurfacing alternative to micro-dermabrasion and microneedling procedures. A highly effective combination of gentle exfoliators polishes away dull skin cells, diminishes the look of fine lines and wrinkles, and visibly improves pores, smoothness and youthful radiance. Vegan formula. 1.7 fl. oz. 798-592 reg. \$34 \$18.99



Contains ingredients that increase the amount of collagen by 65% in just 48 hours.**



Isa Knox Anew Clinical Collagen Booster Rejuvenating Serum Ampoules

With a powerful peptide blend that boosts the body's natural production of collagen. Capsulated single-use ampoules keep formula fresh and potent, and deliver the optimum dose. Vegan formula. 60 ampoules, .008 fl. oz. each.

803-077 reg. \$62.50 \$49.99

**Based on a collagen production study in cell culture.

NEW LOOK!

Isa Knox Anew Clinical Collagen Booster Eye Lift Pro Dual Eye System

With a peptide complex to help boost collagen production. In just one week, eye area looks lifted, firmer and tighter. Gel, .33 fl. oz. Cream, .33 fl. oz.

729-435 reg. \$40 \$22.99



CLINICAL treat your skin like a professional



In just three days, skin tone looks more even.

Instantly, eyes look brighter and fresher.

the way
to get even
vitamin
C

Anew Clinical Absolute Even Dark Circle Corrector
With a hyperpigment inhibitor that lightens the look of dark shadows. .5 oz. net wt. **543-492**
reg. \$40
\$22.99

Anew Clinical Absolute Even Multi-Tone Skin Corrector
9 out of 10 saw a dramatic improvement in skin tone for flawless-looking skin. 1 oz. net wt. **173-271**
reg. \$44
\$26.99

POWER SERUM, SKINVINCIBLE & MASSAGER



Skinvincible Deep Recovery Cream
Don't be surprised to see the look of age damage lessened in weeks. Use PM. 1 oz. net wt. **418-370**
reg. \$40
\$22.99



Skinvincible Day Lotion Broad Spectrum SPF 50
Avon's highest sunscreen protection with 24-hour moisture. Use AM. 1 oz. net wt. **419-065**
reg. \$40
\$22.99

give your
regimen a
**power
boost**



Anew Power Serum
Visibly improves wrinkles, radiance, firmness and texture. Use AM and PM, after cleansing, as your treatment before moisturizing. 1 fl. oz. **417-187**
reg. \$45
\$26.49

the wrinkle wrangler
retinol

Isa Knox Anew Clinical Line Eraser with Retinol Targeted Treatment
In just one week, the look of deep lines are smoothed and resurfaced. Use PM. .67 fl. oz. **729-397**
reg. \$40
\$22.99

Isa Knox Anew Clinical Line Eraser with Retinol Treatment
100% of women showed improvement in the look of fine lines and wrinkles. Use AM/PM. 1 oz. net wt. **729-382** reg. \$45
\$26.99



Avon Eclat D'or Youth Activating Massager
Chrome-plated roller deeply kneads the curvature of your face and décolletage to help revive and tighten tired, stressed skin. 6" L. Use AM/PM. **517-879** reg. \$50
\$39.99



Help stimulate circulation and promote the absorption of serums and moisturizers.

Amino Clear Bubble Foaming Cleanser

With amino-acid-based ingredients to unclog pores and clean away dead skin cells.

5 fl. oz.
243-134
reg. \$16
\$12



Clarifying Spot Healing Patches

Tea tree leaf helps promote skin clarity. Clear plaster band soothes and protects skin from contaminants.

24 patches. 243-540
reg. \$3
\$2.50



More than just a trendy beauty ingredient—it's known to **relieve irritated skin, strengthen the skin barrier and gently moisturize.** In fact, cica was named “tiger grass” after tigers were discovered rolling in it to heal their wounds.

A. Cica Peptide Ampoule

For skin that needs firming. With a concentrated blend of cica and peptides, helps energize, smooth and firm skin. Dermatologically tested. Suitable for sensitive skin. Use after cleansing, before moisturizing with Cica Recovery Cream.

1.52 fl. oz. 210-258 reg. \$45
\$36

B. Cica Recovery Cream

For extra-dry and damaged skin. With strengthening ceramide.

1.7 fl. oz. 508-055
reg. \$42
\$34



C. Daily Repair Cica Moisturizing Lip Balm

Soothes dry, sensitive lips. Moisturizing cica-infused oil glides over lips to keep them soft and smooth. Free of fragrance and mineral oil. Suitable for sensitive skin. Dermatologically tested. .14 oz. net wt.

399-160 reg. \$14
\$12

D. Intensive Face Mask Cica Peptide

Helps calm troubled skin. With concentrated cica and peptides like the Ampoule for visibly soothed, smooth, naturally glowing skin. Fabric sheet mask gently adheres to skin without irritation. After cleansing, before moisturizing, leave on for 10-15 minutes. 1.35 fl. oz.

399-247 reg. \$3
\$2.50

Rice Water Bright Bright Rice Bran Gentle Exfoliating Cleanser

Daily scrub with organic rice bran powder, rice bran oil and hydrated silica for gentle exfoliation to remove impurities and help skin feel soft and look fresh and radiant.

10 fl. oz. 376-865
reg. \$15.99
\$12.99



Rice Water Bright Foaming Cleanser

Cleanses and moisturizes in one. Lathers up into a creamy foam. With rice water and soapwort extract that leave skin looking clear and bright.

10 fl. oz. 508-093
reg. \$13
\$11



Rice Water Bright Cleansing Facial Wipes

Refreshing at home and on the go. With rice extract to moisturize while cleansing. Removes eye makeup.

50 sheets. 508-108
reg. \$11
\$9



UNPARALLELED
LUXURY
 FOR YOUR SKIN



**MISSION LUXEREVE
 SERUM**

A deluxe regenerating serum formulated to help boost skin elasticity and firmness for the smoothest, most youthful-looking skin ever. Use AM/PM, after Mission Luxereve Essence and before moisturizing with Mission Luxereve Cream.

1.01 fl. oz.
635-754 reg. \$225
\$180

**MISSION LUXEREVE
 CREAM**

Enriched with luxurious oils and other moisturizing ingredients, this indulgent cream helps skin look smoother, firmer and radiantly healthy, for a more youthful, sculpted appearance. Use AM/PM, after Mission Luxereve Serum. In AM, follow with sunscreen. 1.76 oz. net wt.

635-740 reg. \$350
\$280



MISSION LUXEREVE SERUM GIFT SET

Premium three-piece set includes:

- Blue Aventurine Rolling Face Massager, 3 7/8" L.
- Full-Size Luxereve Serum, 1.01 fl. oz.
- Half-Size Luxereve Cream, .88 oz. net wt.

998-460 reg. \$225
\$180 the set

A skin-revitalizing essence

Deep hydration to prep skin for the **Mission Luxereve** regimen as it enhances the regimen's rejuvenating power and smooths skin.



So light yet luxurious, this essence includes a special fermentation complex derived from natural ingredients for concentrated, lasting moisture.



**MISSION LUXEREVE
 ESSENCE SET**

Deluxe skin care collection includes:

- Full-size Mission Luxereve Essence
 Use AM/PM after cleansing, before Mission Luxereve Serum and Cream. 3.72 fl. oz.
- Try-It-size Serum, .23 fl. oz.
- Try-It-size Cream, .17 oz. net wt.

514-702 reg. \$106
\$85 the set

Your most luxurious regimen ever is now complete



MISSION LUXEREVE EYE CREAM SET

Anti-aging eye care set includes:

- **Eye Cream**
Luxurious yet lightweight. Helps visibly restore firmness and elasticity around the eyes. Use with Eye Massagers, after Face Cream. .53 oz. net wt.
- **Rose Quartz Eye Massagers**
Set of natural stone massagers to soothe and cool eye area, helping to relieve fatigue for a refreshed look. Ergonomically designed to use all around upper and lower areas: small side for acupressure; larger side for massage.

779-996 reg. \$188
\$150 the set



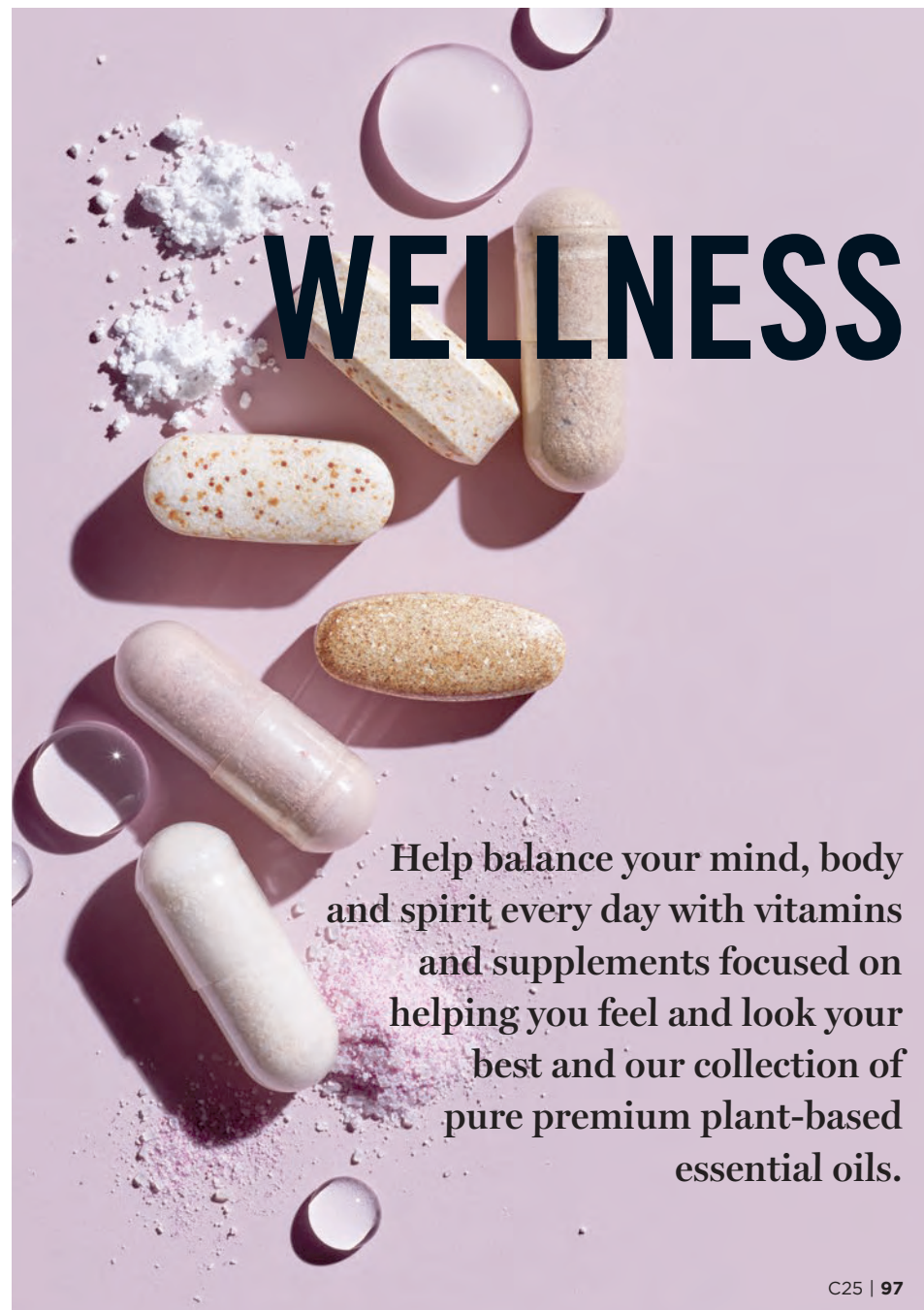
After cleansing with **Foaming Wash**, apply **Essence**. Follow with **Mission Luxereve Serum**.

MISSION LUXEREVE FOAMING WASH SET

Deluxe set includes:

- **Mission Luxereve Foaming Wash** (full size)
Removes pore-clogging impurities while leaving skin feeling clean, moisturized and refreshed. Preps skin for the Mission Luxereve regimen with the power of natural fermentation while it deeply hydrates and smooths skin. 5 fl. oz.
- **Mission Luxereve Essence** (try-it size) .67 fl. oz.

779-518 reg. \$81
\$65 the set



WELLNESS

Help balance your mind, body and spirit every day with vitamins and supplements focused on helping you feel and look your best and our collection of pure premium plant-based essential oils.

re:tune

INNER BEAUTY*

Beauty starts at your very core. re:tune Inner Beauty helps you feel good on the inside so you can look great on the outside. Key supplements deliver nutritional support and advanced clinical skin care helps maintain a healthy radiant appearance.

re:tune Inner Beauty Hair, Skin & Nail Health
Antioxidants, biotin and nutritional building blocks to promote a healthy response to skin stressors while helping build healthy hair, skin and nails.* 60 tablets. **396-908** reg. \$39 **\$32**

re:tune Inner Beauty Restful Sleep
A natural, non-habit-forming supplement to help you get your beauty sleep and wake up refreshed.* With magnesium, hops, chamomile and melatonin. 60 vegetarian capsules. **006-487** reg. \$24 **\$19**

re:tune Inner Beauty Collagen Booster
Supports healthy collagen production for firmer-looking radiant skin.* Add one scoop to water, juice or coffee. Unflavored. 2.65 oz. net wt. (75 g). **906-901** reg. \$69 **\$56**

*These statements have not been evaluated by the Food and Drug Administration. This product is not intended to diagnose, treat, cure or prevent any disease.
†With reduced dietary intake and exercise.



re:tune Inner Beauty Hydration
Supercharge your water for optimal hydration, more energy and to boost skin health. Contains the ideal balance of electrolytes, minerals, B vitamins and antioxidants.* Berry flavored. 20 packets. **966-140** reg. \$25 **\$20**

re:tune Inner Beauty Hunger Block
Help reduce your food cravings for hours* with a naturally sourced super fiber that can absorb up to 50 times its weight in water. 60 vegetarian capsules. **906-920** reg. \$31 **\$25**

re:tune Inner Beauty Metabolism Boost
A natural, plant-based energy and metabolism booster that helps you burn more calories.** 60 vegetarian capsules. **907-195** reg. \$33 **\$26**

re:tune Inner Beauty Ideal Cleanse
AM + PM multi pack. Helps cleanse your body of toxins for healthy digestion and helps reset your metabolism in just three days.* Three servings: nine AM capsules, nine PM tablets. **396-950** reg. \$25 **\$20**



Enjoy these special prices and exclusive offers only when you shop with an Avon Representative.



RE:TUNE DAILY ESSENTIALS

Everyday vitamins, minerals and supplements to help your body stay healthy, every day. Where restoring your natural balance becomes a lifestyle.



re:tune Daily Essentials Omega-3

Supports a healthy heart[†]; contains EPA and DHA omega-3 fatty acids from fish and algae oil without the fishy odor or aftertaste. 60 softgels. **952-352 reg. \$26 \$21**



re:tune Daily Essentials Eye Health

Provides support for healthy eyes with lutein from marigolds and antioxidant-packed vitamin A as beta-carotene.[†] Contains extracts of bilberry, tomato and acerola cherry. 60 softgels. **951-906 reg. \$26 \$21**

[†]These statements have not been evaluated by the Food and Drug Administration. This product is not intended to diagnose, treat, cure or prevent any disease.



re:tune Daily Essentials Vitamin C

Provides antioxidants that can protect the body from free-radical damage and support overall immune health.[†] 500 mg of vitamin C with rose hips. 100 tablets. **952-166 reg. \$25 \$20**
See special offer on pages 76-79.



re:tune Daily Essentials Digestive Health

Includes two probiotic strains to help nurture and support healthy intestinal flora for good digestion.[†] Shelf-stable probiotic blend. Acid-resistant. 100 capsules. **951-026 reg. \$29 \$23**



re:tune Daily Essentials Bone Health

Includes vitamin D to help your body absorb calcium to support healthier teeth and bones.[†] 60 tablets. **951-959 reg. \$25 \$20**

Boost your well-being,
soothe your spirit
enhance your mood



AVON PURE

Expertly crafted, highly concentrated, pure premium-quality, plant-derived, essential oils. Some call it aromatherapy. You'll call it pure bliss.

Free of parabens, gluten, phthalates and sulfates.

AVON PURE ROLL-ON ESSENTIAL OILS

Focus

Helps boost alertness and concentration. With sweet almond oil, lemon peel oil and rosemary leaf extract.

098-925
reg. \$23

Energize

Wakes you up from that mid-day slump. With sweet almond oil, grapefruit peel oil, sweet orange peel oil and rosemary leaf extract.

100-415
reg. \$23

Aches Away

Helps soothe and relax achy muscles. With peppermint, rosemary leaf extract and sweet almond oil.

100-420
reg. \$23
\$18 each



Head-Aid

Ease your mind. With peppermint, eucalyptus and sweet almond oil.

100-453
reg. \$23

De-Stress

Like yoga in a bottle...it helps calm you. With sweet almond oil, lavender and peppermint.

098-963
reg. \$23

\$18 each



get rolling

AVON PURE ROLL-ON ESSENTIAL OILS

Pop a rollette in your pocket or purse and instantly transform your day wherever you go with the perfect blend of oils.

Each, .34 fl. oz.

HOW TO USE: Apply roll-on directly to skin to experience the benefits.



Grapefruit
Natural energizer.
Brightens up
your day.
Grapefruit peel
oil. .34 fl. oz.
098-796
reg. \$21
\$17

Peppermint
Cooling.
Stimulating.
Refreshing.
Invigorating.
Pep up!
.34 fl. oz.
098-820
reg. \$21
\$17



Avon Pure Diffuser
LED light-up
diffuser with three
different settings
releases a fine mist
of essential oil
and water into
the air so that
you can easily fill
your space with
the essence of
the oils.
6½" H. USB
connection.
915-424
reg. \$36
\$29



Rosemary
Stuck in
neutral? This
will help you
get going.
Rosemary
leaf oil. .34 fl. oz.
915-410
reg. \$29
\$23

Eucalyptus
Refreshes
the mind.
Rejuvenates
the senses.
.34 fl. oz.
098-724
reg. \$19
\$15



Lavender
Calms and
soothes. Helps
with balance
and restfulness.
.34 fl. oz.
098-710
reg. \$25
\$20



Sweet Dreams
Create a serene
environment
for restful
thoughts.
With lavender
and chamomile.
.34 fl. oz.
098-891
reg. \$29
\$23



Happiness
Infuse the
air with joy
and exhilaration.
With grapefruit,
lemon and
sweet orange.
.34 fl. oz.
098-906
reg. \$19
\$15



Zen
Awaken an
allover sense
of tranquility.
With lavender,
peppermint
and chamomile.
Namasté.
.34 fl. oz.
098-910
reg. \$29
\$23



MAKEUP

It's more than just pretty pops of color.
It's *lipstick* that makes a beautiful impact,
foundation that lets the real you shine through
and *eyeshadow* that *ignites your sparkle...*
now you're ready to take on the world!

*Try before you buy with our virtual
makeover tool at Avon.com/virtual-try-on*



GLIMMER LINERS



fmg Glimmer Diamond Eyeliner
 Finely milled pearl provides dimension and subtle sparkle that makes eyes dazzle!

- | | | |
|---|---|---|
|  |  |  |
| Olive
331-940 | Sterling
331-960 | Black Ice
331-610 |
|  |  |  |
| Brown Sugar
331-568 | Sugar Plum
331-625 | Purple Rain
332-071 |
|  |  |  |
| Twilight Sparkle
331-553 | Teal Sparkle
331-606 | Smoky Diamond
331-280 |







Long-wearing retractable liners for eyes and brows.

fmg Glimmer Liners
 Creamy, smooth formulas glide on effortlessly with all-day comfortable wear. Rich pigments provide vivid, opaque color laydown. Fade-resistant. Comes off easily with soap and water or makeup remover. Each, .01 oz. net wt. reg. \$9 **\$3.99 each**

Packaging may vary.



fmg Glimmer Cream Eyeliner
 Dimensional shades with a subtle sheen finish.

- | | | |
|---|---|---|
|  |  |  |
| Blackest Black
334-366 | Cosmic Brown
334-351 | Majestic Plum
334-313 |
|  |  |  |
| Saturn Grey
334-328 | Starry Night
334-347 | Emerald Green
334-332 |

Emerald Green
334-332



fmg Glimmer Brow Definer
 Create fine hair-like strokes, for the most natural looking brow. Infused with nourishing castor oil, aiding in hair growth and with coconut oil, leaving brows feeling soft and smooth. Smudge-, transfer-, sweat- and waterproof.

- | | | |
|---|---|---|
|  |  |  |
| Light Blonde
331-109 | Blonde
331-113 | Tawny
331-128 |
|  |  |  |
| Light Brown
331-151 | Dark Brown
331-147 | Brunette
331-242 |

Brunette
331-242



Scan the QR code and check out all the ways to Glimmer!

GLIMMER UP! NEW chic packaging!
 Same great long-wearing vivid color!

Featured shades:
 Cream Eyeliner in Emerald Green and Starry Night and Brow Definer in Dark Brown.

Enjoy these special prices and exclusive offers only when you shop with an Avon Representative.

GLIMMER EYE



MATTE SATEEN
Moonstone 448-549

Vivid stay-all-day
shimmery color.

fmg Glimmershadow Liquid Eyeshadow

Long-wearing, no-smudge,
no-crease, buildable
formula with no messy
fallout. Sheer wash of
sateen color to full-on
glittery wow. Water-
resistant. Paraben-,
phthalate- and sulfate-free.
.07 fl. oz. **reg. \$12**

\$7.99

Available in 3 ultrafine pearl finishes:
Matte Sateen, Shimmer or Glitter.

MATTE SATEEN Citrine 451-120	MATTE SATEEN Pink Sapphire 448-591	MATTE SATEEN Sunstone 434-015	MATTE SATEEN Moonstone 448-549	MATTE SATEEN Tiger's Eye 500-585
MATTE SATEEN Jasper 500-566	SHIMMER Rose Gold 469-095	SHIMMER Bronze Age 469-100	SHIMMER Iron Violet 469-061	SHIMMER Crystal Lilac 479-040
SHIMMER Pink Topaz 479-150	GLITTER Diamond Dust 478-866	GLITTER Ultramarine 469-042	GLITTER Fool's Gold 469-076	GLITTER Peach Sapphire 469-057



Dragonfly
923-342

Lids look shimmery
all day and night.

fmg Glimmer Longwear Gel Eyeshadow

Long-wearing, creamy weightless
formula with delicate pearls that
capture and reflect light. Seamless,
buildable coverage, never looks heavy
or cakey. Crease- and smudge-proof.
Fade-resistant. .21 oz. net wt.

reg. \$12
\$9.99

Dragonfly 923-342	Firefly 910-040
Electric Jellyfish 924-956	Bronze Butterfly 924-937



Tornado
906-969

High-performance creamy
color wears all day.

fmg Glimmer Longwear Gel Eyeliner

Richly pigmented formula dries to
an intense matte finish. Use as an
eyeshadow base to amp up overlying
colors. Full, opaque coverage.
Smudge-, flake-proof. Fade-resistant.
.21 oz. net wt. **reg. \$12**

\$9.99

Tornado 906-969	Windswept 907-051
Rainstorm 907-066	Tumbleweed 907-324

SWIPE GLIMMER DONE

MAKEUP



Featured shades:
Glimmer Longwear Gel Eyeshadow
in Dragonfly and Eyeliner in Tornado.



FREE full-size VDL Eye Primer in Original* with any 2 GLIMMER EYE purchases, pages 108 thru 111. *Sold separately on page 59.



CURATED COLOR

Featured shades:
Glimmer Eyeshadow Quad
in Darling and Satin Lipstick
in Sierra Sunset.

Enjoy these special prices and exclusive offers only when
you shop with an Avon Representative.

GLIMMER LIP + EYE

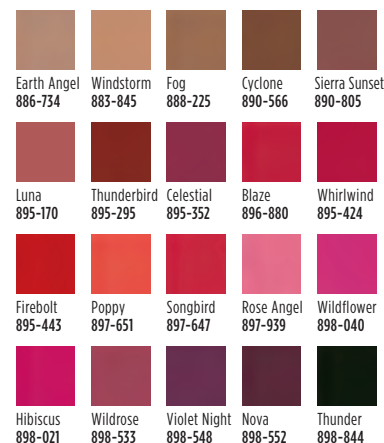


Sierra Sunset
890-805

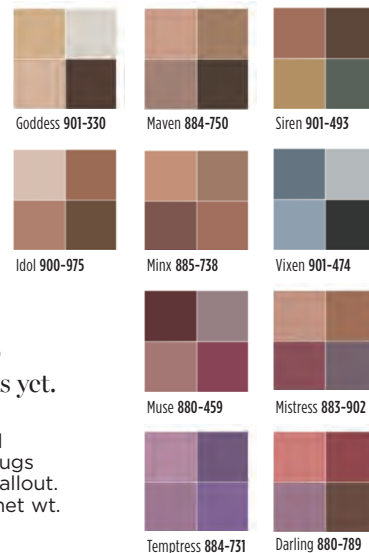
Enticing and
inspiring spectrum
of 20 versatile and
expressive shades.

fmg Glimmer Satin Lipstick

Lightweight, smooth
and creamy formula is
infused with pomegranate
extract to help provide
antioxidant benefits. Soft
satin finish delivers rich,
comfortable color with a
buildable medium-to-full
coverage. .10 oz. net wt.
reg. \$11
\$8.49



Darling
880-789



Color-coordinated shades work together to
enhance eyes for your most expressive looks yet.

fmg Glimmer Eyeshadow Quad

Perfectly pigmented shadows in matte, satin and
shimmer finishes. Creamy soft powder formula hugs
lids with rich color for all-day wear, without the fallout.
Buildable, medium-to-full coverage. .21 oz. total net wt.
reg. \$15
\$11.99



FREE full-size VDL Eye Primer in Original* with any 2 GLIMMER
EYE purchases, pages 108 thru 111. *Sold separately on page 59.

Featured shade:
Glimmer Lip Glaze
in Flash.



LIPS THAT COMMAND ATTENTION

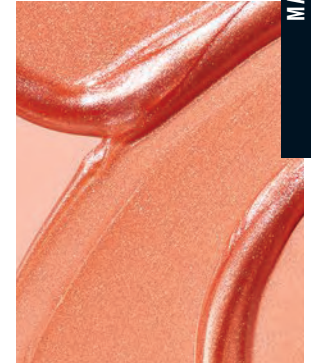
GLIMMER LIP



NEW

Plump your pout instantly.

fmg Glimmer Lip Plumper
Volulip™ plumps, softens and moisturizes lips. Dimensional wet shine. Non-sticky creamy formula with hydrating castor seed oil and antioxidant vitamin E. No stinging or burning, just fuller lips! Shiny gloss finish gives hours of wear without feathering. Universally flattering, brilliant shade. Refreshing peppermint scent. .3 fl. oz. **Brilliance 691-130**
reg. \$12
\$9.99



NEW

Drench lips in dimensional shine, glimmering color and instant moisture.

fmg Glimmer Lip Glaze
Smooth, lip-hugging texture gives hours of wear without feathering. Non-sticky creamy formula with antioxidant vitamin E. Buildable sheer to medium coverage with lustrous glossy finish. .3 fl. oz. **reg. \$11**
\$8.99



Flash 691-183



A kiss of glimmer.

Glimmerkiss Liquid Lipstick
Shimmering gem-like finish. Weightless, silky-smooth gel-cream formula. Water-resistant. Long-lasting wear. Paraben-, sulfate- and phthalate-free. .07 fl. oz. **reg. \$14**
\$9.99



Ruby 479-700



Renegade Ruby 494-281

Dual-ended lip stain with all-day wear & saturated color.

2-in-1 Lip Tattoo Lip Line & Fill Duo

No smudging, feathering or budging. Infused with sunflower seed oil to help hydrate lips. Paraben-, gluten-, phthalate- and sulfate-free. Vegan. .05 fl. oz. reg. \$13 **\$9.99**

Gnarly Nude 494-425	Rebel Raspberry 494-243	Renegade Ruby 494-281
Inked Rose 494-239	Pinup Plum 494-277	Misunderstood Merlot 494-300



Peach Bellini 074-470

Addictive gourmand scents and ultra shine.

Avon Crave Lip Gloss
Vitamin E formula moisturizes, smooths and softens lips. .3 fl. oz. reg. \$9 **\$5.99**

Peach Bellini 074-470	Salted Caramel 074-485	French Toast 047-903
Birthday Cake 050-231	Strawberry Glaze 054-347	Chocolate Brownie 047-937



PYT 250-572

A nude pout for every party.

Birthday Balm Lip Crayon

Butter-soft with a sheer hint of color and shine. Moisturizing formula with non-GMO shea butter for soft, supple lips. Paraben-, phthalate-, gluten- and mineral oil-free. .1 oz. net wt. reg. \$12 **\$9.99**

Lovin' Life 250-553	Birthday Suit 250-606	PYT 250-572
Surprise! 250-697	Birthday Post 253-385	Fine Wine 252-389



Red Symphony 522-434

Polished shine, instant hydration and visibly plump lips.

fmg Ink High-Gloss Lacquer

With seven naturally-derived essential oils: sweet almond, borage seed, calendula, chamomile flower, lavender, rose flower and rosemary leaf. .17 oz. net wt. reg. \$21 **\$17**

Frozen Beige 500-748	Coral Moment 506-071	Rose Happening 506-330
Pink of Me 506-550	Red Symphony 522-434	Plum Candy 522-449



A burst of vivid color with a featherlight feel and velvety soft matte finish.

Mattitude Soft Matte Liquid Lip

Non-drying formula that lasts for hours. Micronized pigments. Poppy seed oil and vitamin E nourish and smooth lips. Paraben-, sulfate- and phthalate-free. .13 fl. oz. reg. \$13 **\$9.99**

Ambitious 750-717	Resolute 750-679	Devoted 750-650
Relentless 750-607	Driven 750-664	Tenacious 750-683
Persistent 750-626	Resilient 750-630	

Featured shade (on model):
Mattitude Soft Matte Liquid Lip in Driven.

WOW YOUR BROWS

introducing

CASHMERE 24 HOUR BROW POMADE

Create bold, well-defined brows with 24 hours of waterproof wear.



NEW

Ultra-creamy, weightless pomade fills in brows, as it boosts color.

fmg Cashmere 24 Hour Brow Pomade
Smudge-proof, sweat-proof formula. Matte finish. Dual-ended applicator with angled tip brush and spoolie. Applicator, 4 1/2" L.
.14 oz. net wt. **reg. \$24**
\$19



CASHMERE BROW + EYE

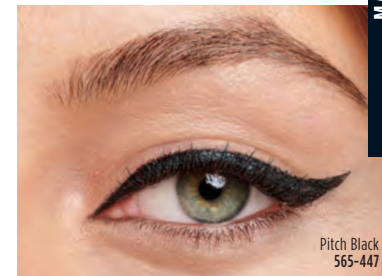


After Dark
566-845

NEW

Intense decadent black shades with dazzling jewel undertones for dramatic results.

fmg Cashmere 24HR Cream Eyeliner
Comfortable kohl formula with 24-hour wear. Waterproof, matte finish. Smudge applicator to blend. Vegan. Paraben-, phthalate- and fragrance-free.
.04 oz. net wt. **reg. \$18**
\$15



Pitch Black
565-447



Nightfall
565-451



Essential Eyes
565-428



Enchanted Eyes
565-432



Essential Eyes
565-428

NEW

Expertly curated 9-shade palettes to create an array of looks.

fmg Cashmere Eyeshadow Palette
Long-wearing creamy powder shadows in satin, matte and sparkling finishes. Crease- and smudge-proof wear. Vegan. Talc-, paraben- and fragrance-free.
.63 oz. total net wt. **reg. \$40**
\$32



Featured shade:
fmg Cashmere
Essence Lipcream
In Cherry Rush

**CARESS YOUR LIPS
WITH CASHMERE**

CASHMERE LIPCREAM









Cherry Rush
876-870

America's only lipstick with a Bio-Retinol core.

fmg Cashmere Essence Lipcream
Plant-based Bio-Retinol, known for effective anti-aging properties without the harsh irritation, improves lip hydration and protection. With ginseng cell extract, antioxidant meadowfoam seed oil and vitamin E. High-shine finish. .11 oz.

net wt.
reg. \$22
\$18



			
Day Dreamer 883-773	Cozy Rosy 879-626	Coral Charm 879-148	Honey Mandarin 876-024
			
Pink Lady 879-296	Plush Peony 873-977	Cheeky Red 883-147	Summer Berry 881-766



Rich Berry 614-514

Sumptuous matte finish.

fmg Cashmere Lipcream Matte
Blurring effect helps to visibly smooth lips. With antioxidant vitamins C and E, shea butter, avocado and coconut oils to nourish and soften lips. .11 oz. net wt. reg. \$22
\$18



		
True Red 616-589	Soft Crimson 616-445	Rich Berry 614-514
		
Dark Cherry 614-237	Soft Mauve 614-222	Nude Blush 614-203
		
Nude Beige 614-199	Nude Pink 614-184	Nude Rose 614-165

Rich Berry 527-273

Chic satin finish.

fmg Cashmere Lipcream Satin
Blurring effect helps to visibly smooth lips. With antioxidant vitamins C and E, shea butter, avocado and coconut oils to nourish and soften lips. .11 oz. net wt. reg. \$22
\$18



		
True Red 345-355	Soft Crimson 529-329	Rich Berry 527-273
		
Dark Cherry 525-160	Soft Mauve 097-417	Nude Blush 523-957
		
Nude Beige 523-560	Nude Pink 932-252	Nude Rose 999-011



N150 (N)
111-658

Featured shade:
Longwear Foundation in Muffin.

2-in-1 powder can be worn wet or dry.
Use as foundation or setting powder.

fmg Cashmere Complexion Compact Powder Foundation

Buildable medium-to-full coverage. Soft-focus matte finish. Amino-acid-coated pigments control shine. With vegan collagen, lavender oil, artichoke and chamomile extracts. Includes mirror compact and sponge. .40 oz. net wt. reg. \$36
\$30

Available in Cool (C), Neutral (N) and Warm (W) undertones.

N110 (N) 107-830	W110 (W) 111-294	W120 (W) 111-309	C110 (C) 111-313	N120 (N) 111-370	W130 (W) 111-423
W140 (W) 111-514	W150 (W) 111-438	W160 (W) 111-533	N130 (N) 111-548	N140 (N) 111-605	W170 (W) 111-610
N150 (N) 111-658	W180 (W) 112-229	N160 (N) 112-248	C120 (C) 112-286		

CASHMERE COMPLEXION luxury in the shade of you

Muffin (W)
730-110



Cashmere Complexion Longwear Foundation Good Housekeeping Magazine 2021 Beauty Award Winner.

fmg Cashmere Complexion Longwear Foundation

24 hours of comfortable, breathable wear. Full, flexible coverage. Soft-focus matte finish. Visibly blurs pores and fine lines for a smoother complexion. With antioxidant botanical extracts. Water-resistant. Vegan. 1 fl. oz. reg. \$32
\$24.50

Available in Cool (C), Neutral (N), Warm (W) and Warm Olive (WO) undertones.

Cannoli (W) 714-326	Nougat (W) 714-330	Meringue (W) 715-451	Shortcake (C) 715-466	Buttercream (N) 715-519
Marshmallow (N) 715-538	Custard (N) 715-542	Strudel (C) 715-648	Macadamia (W) 718-427	Ganache (WO) 719-370
Coconut (W) 718-412	Cappuccino (N) 724-854	Chai (WO) 718-670	Vanilla (W) 729-090	Toasty (N) 724-892
Praline (N) 727-447	Tiramisu (W) 724-873	Soufflé (N) 724-964	Muffin (N) 730-110	Gingerbread (C) 730-310
Pudding (N) 730-435	Amaretto (N) 730-440	Latte (W) 731-207	Brownie (WO) 730-765	Hazelnut (W) 731-336
Cognac (W) 735-069	Pecan (N) 736-869	Java (W) 737-459	Clove (N) 737-478	Truffle (C) 737-482



Tres Leches (N)
119-424

24 hours of comfortable, breathable wear.

fmg Cashmere 24 Hour Concealer

Full coverage. Soft-focus matte finish. Visibly corrects dark circles and imperfections. With antioxidant botanical extracts. Water-resistant. .20 fl. oz. reg. \$22
\$16

Available in Cool (C), Neutral (N), Warm (W) and Warm Olive (WO) undertones.

Packaging may vary.

Sugar (W) 109-484	Mochi (N) 110-761	Cheesecake (C) 112-176	Parfait (W) 113-058
Macaroon (N) 113-081	Tart (WO) 115-012	Butterscotch (W) 115-156	Waffle (W) 115-869
Biscuit (WO) 116-650	Tres Leches (N) 119-424	Toffee (W) 123-662	Cupcake (N) 123-715



FREE full-size VDL Lumilayer Rosy Perfect Primer* with any CASHMERE FACE purchase, pages 120–121. *Sold separately on page 58.

LOVE THE GLOW

Light up the room with a skin-loving glow collection that's truly illuminating!

A



B



Heart-shaped and round beads create instant radiance.

fmg Colors of LOVE Glow Beads Illuminating Powder
The lightweight formula provides a delicate pearlescent finish on all skin tones. Vegan. .71 oz. net wt. reg. \$30
\$24



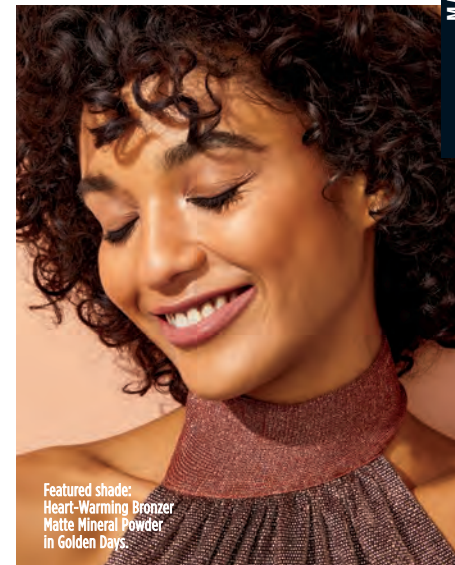
A. Wild Hearts 150-961
B. Queen of Hearts 150-684



COLORS OF LOVE

The perfect pressed or loose powder brush to define and sculpt.

fmg Kabuki Brush
Retractable multiuse kabuki brush designed with soft, angled bristles. Cap keeps the brush head safely covered when not in use. 3³/₄" L x 1" diam. Vegan, synthetic bristles. **732-370**
reg. \$16
\$12.99



Featured shade:
Heart-Warming Bronzer
Matte Mineral Powder
in Golden Days

My Sunshine
150-980



Skin-loving mineral powder bronzer adds effortless warmth to complexion.

fmg Colors of LOVE Heart-Warming Bronzer Matte Mineral Powder
Helps reduce the appearance of shine. Silky, matte formula with moisturizing phytosqualane glides on evenly without appearing cakey. Special-effect pigments hug the skin for a lasting bronzed finish. Get a back-from-the-beach, natural-looking tan all year long. Perfect for all skin types. Vegan. .42 oz. net wt. reg. \$26
\$21



My Sunshine 150-980
Golden Days 151-202
Sunset Kiss 151-240

Silky water-based formula with hyaluronic acid.

A. fmg Colors of LOVE Sun-Kissed Cushion Bronzer*

Instantly hydrates, soothes and visibly plumps skin, plus rosemary extract with antioxidant benefits. Buildable sheer-to-medium coverage. .81 oz. net wt. reg. \$39 **\$32**



A

B

Golden Lily 299-162

Morning Sunflower 298-080

Skin-loving color.

C. fmg Colors of LOVE Kiss Me Cushion Blush*

Water-based formula with hyaluronic acid instantly boosts hydration, plus antioxidant non-GMO water lily and green tea extracts. Buildable sheer-to-medium coverage. .24 oz. net wt. reg. \$27 **\$22**

Instantly boosts hydration.

B. fmg Colors of LOVE Kiss Me Cushion Highlighter*

Skin-loving color, water-based formula with hyaluronic acid, plus antioxidant non-GMO water lily and green tea extracts. Buildable sheer-to-medium coverage. .24 oz. net wt. reg. \$27 **\$22**



Fairy Dahlia 299-143 Golden Lily 299-162



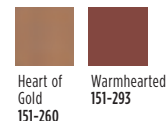
Sweet Pea 298-883 Queen Carnation 298-902 Orchid Kiss 298-955 Midnight Lily 298-960

COLORS OF LOVE

Warm, healthy-looking glow.

fmg Colors of LOVE Glow Balm Bronzing Stick

Lightweight formula glides on smoothly. Creates instant radiance with a skin-loving blend of pomegranate extract, mango and shea butter, vitamins E and C, and avocado oil. .28 oz. net wt. reg. \$16 **\$12.99**



Heart of Gold 151-260 Warmhearted 151-293

Warmhearted 151-293

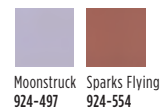


Featured shade: Colors of LOVE Glow Balm Duo Illuminating Stick in Heartthrob.

Soft radiant glow.

fmg Colors of LOVE Glow Balm Illuminating Stick

Infused with ultrafine pearls. Lightweight creamy formula with skin-loving blend of antioxidant pomegranate extract, moisturizing mango and shea butter, vitamins E and C and nourishing avocado oil. .28 oz. net wt. reg. \$16 **\$12.99**



Moonstruck 924-497 Sparks Flying 924-554



Glown' Real Good 924-569 Daydreaming 924-444

Moonstruck 924-497



Dual-ended glow stick.

fmg Colors of LOVE Glow Balm Duo Illuminating Stick

Sheer formula contains a skin-loving blend of pomegranate extract, mango and shea butter, vitamins E and C, and avocado oil. Complementary shades blend and layer beautifully for expert highlighting and definition. Lightweight formula with multicolor, ultrafine and bold pearls, glides on smoothly for a soft, shimmery finish. .28 oz. total net. wt. reg. \$20 **\$15.99**

Heartthrob 924-573



National Presenting Sponsor

AVON



Avon will contribute 15% of the sales price of the Colors of LOVE Cushion makeup from page 124, up to \$700,000 in 2021, to American Cancer Society Making Strides Against Breast Cancer. The American Cancer Society does not endorse any product or service. To learn more, visit MakingStridesWalk.org/TeamAvon

Enjoy these special prices and exclusive offers only when you shop with an Avon Representative.

#JUSTMAGIX

Oil-Free + Mattifies + Controls Shine

fmg Magix Tint Oil-Free Tinted Moisturizer

Buildable coverage with a demi-matte finish. Lightweight, non-drying formula evens skin tone, blurs the look of pores and fine lines. With **niacinamide, clay and green tea extract**. Ideal for oily skin and combination skin.

1 fl. oz. reg. \$14
\$10.99



Tint + Moisturize + Glow

fmg Magix Tint Radiant Tinted Moisturizer

Buildable coverage with a radiant finish. Lightweight non-drying formula evens skin tone, boosts moisture and blurs flaws. With **passion fruit, chia and sunflower seed oil and antioxidant vitamins E and B5**. Ideal for normal, dry, combination and oily skin. 1 fl. oz. reg. \$14

\$10.99

Packaging may vary.



Veil of Natural Color + Instant Hydration

fmg Magix Tint Natural Tinted Moisturizer

Sheer coverage with a natural demi-matte finish. Lightweight non-drying formula evens skin tone and blurs the look of pores and fine lines. With **hyaluronic acid, antioxidant vitamin E and papaya complex**.

Ideal for normal, dry, combination and oily skin. 1 fl. oz. reg. \$14

\$10.99



MAKEUP

WORK YOUR MAGIX

Your fave everyday complexion enhancer just got more targeted! Now choose from **Oil-Free, Radiant and Natural** tinted moisturizers with a flexible shade offering that makes matching easy.

Mineral-infused loose powder creates an invisible veil that controls shine.

fmg Magix Dust Finishing Powder-Invisible

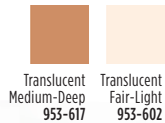
The lightweight formula diffuses light and visibly blurs pores and fine lines. Velvety-soft matte finish. Free of talc, paraben and fragrance. .22 oz. net wt. **718-101** reg. \$17 **\$13.99**



Blend of micro-milled rose quartz, ruby and tourmaline.

Magix Dust Finishing Powder

Weightless loose mineral powder diffuses light, visibly blurs pores and controls shine. Silky feel with naturally glowing, soft matte finish. Antioxidant green tea extract to enhance and smooth skin. Wear alone or to set makeup. Includes no-spill twist and lock sifter. Free of talc, oil and paraben. .21 oz. net wt. reg. \$17 **\$13.99**



Invisible blur balm helps control oil and create a shine-free canvas.

fmg Magix Blur Oil Control Primer Balm

Velvety, sheer formula creates an ultrasmooth, shine-free canvas. Special blurring powder microspheres help reduce the look of fine lines and pores for improved makeup wear. Formulated with nutmeg extract for antioxidant benefits. Includes a sponge applicator. Free of talc and paraben. .59 oz. net wt. **718-207** reg. \$19 **\$15.99**



POOF! SHINE DISAPPEARS!

Creamy veil of color helps camouflage as it corrects and brightens.

fmg Magix Corrector Brightening Perfector

Buildable sheer-to-medium coverage with a demi-matte finish. Helps reduce the appearance of dark circles and blemishes. Blurs imperfections for a flawless look. Won't settle into fine lines. Lightweight formula infused with caffeine, soothing marigold and vitamin E to help perfect skin. Flexible shades. .11 oz. net wt. reg. \$13 **\$9.99**

Medium
376-171

Tan-Deep
376-186

Fair-Light
376-167

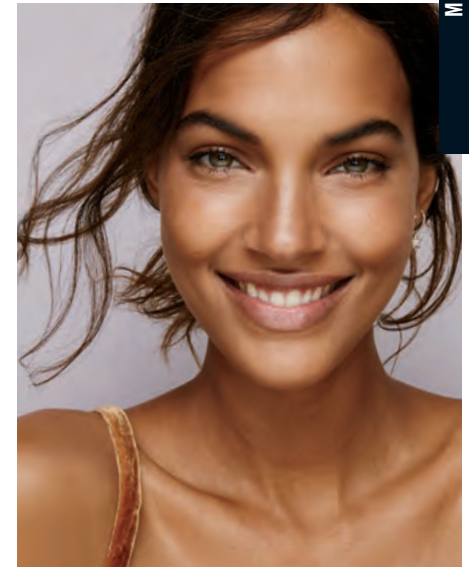
#JUSTMAGIX



Flaw-blurring mattifying primer with SPF 20.

Magix Prime Face Perfector

Pore-free, shine-free and line-free complexion. Sheer coverage suitable for all skin tones. Soft-focus matte finish. Infused with a hydrating blend of fleece flower and rose extracts. 1 fl. oz. **770-711** reg. \$14 **\$10.99**



Hazelnut (W)
264-560













Cover + Perfect + Blur.

Magix Wand Foundation Stick

Full and flexible all-over coverage in a demi-matte finish. Helps to control oil and shine. Water-resistant. With shea butter and antioxidant vitamin E. Conceal, contour and highlight with the on-the-go wand perfect for easy touch-ups. Paraben-, sulfate- and phthalate-free. Vegan. .21 oz. net wt. reg. \$16 **\$12.99**

Available in Warm (W), Neutral (N) or Cool (C) undertones.

Flexible shades!

		
Meringue (N) 262-170	Marshmallow (N) 262-300	Coconut (N) 262-644
		
Vanilla (W) 262-769	Macadamia (W) 262-773	Praline (N) 263-215
		
Amaretto (N) 263-382	Latte (W) 263-469	Hazelnut (W) 264-560
		
Cognac (C) 264-867	Pecan (N) 264-905	Truffle (C) 264-890

MASCARA



Volumizing and lengthening heart-shaped fibers.

Avon True Color

LOVE at 1st Lash Mascara
Love Complex™ with lycopene, olive oil and vitamin E, plus rich black pigments give a clump-free, intense finish. Paraben- and sulfate-free. .3 fl. oz.
Blackest Black 193-128
reg. \$15
\$11.99



cobra brush lifts & curls

Lash-hugging lengthening fibers + voluminous waterproof wear.

LOVE at 1st Lash Waterproof Mascara

Heart-, flower- and cylindrical-shaped fibers. Love Waterproof Complex™ with Lashrez, olive oil and vitamin E. Transfer-resistant. Clump-, flake- and smudge-proof. Paraben- and sulfate-free. .3 fl. oz. **Waterproof Blackest Black 293-805** reg. \$15
\$11.99



with argan & coconut oils



Long and healthy.

Avon True Color SuperExtend Nourishing Mascara

Enriched with vitamin E. .237 fl. oz.
Brown Black 550-615
Black 550-596
reg. \$11
\$8.99



Waterproof volume.

Wash-Off Waterproof Mascara
Washes off easily with soap and water. .21 oz. net wt.
Black 864-301
reg. \$10
\$7.99



Super volume.

Avon True Color SuperShock Volumizing Mascara
Instant high-gloss lushness. .338 fl. oz.
Black 533-332
reg. \$11
\$8.99

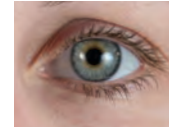


BROWS + EYES

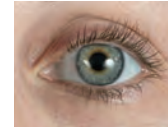
See longer, fuller, healthier lashes in just weeks.

Anew Clinical Unlimited Lashes Lash & Brow Activating Serum*

84% of women agreed lashes look longer and fuller.** Begin seeing results in 4 weeks. Apply only once daily, in the evening. .10 fl. oz.
156-940
reg. \$60
\$24.99



BEFORE



AFTER 8 WEEKS



AFTER 8 WEEKS *with*
Love at 1st Lash Mascara



*Anew Clinical Unlimited Lashes is not intended to reverse or reduce hair loss or grow hair.
**Based on an 8-week consumer-perception study.



Built-in sharpener for precise lines every time.

Avon True Color Always On Point Eye Liner
Smudge- and waterproof. .011 oz. net wt.
reg. \$9
\$6.79



Black Brown 529-697
Black 529-018

Black Brown 529-697



24 hours of stay-put brows.

Hi-Brow Sculpting Gel

Smudge-proof, flake-proof and water-resistant flexible formula. .12 fl. oz. reg. \$17
\$12.99



Blonde 871-094
Soft Brown 871-109
Medium Brown 871-128
Brown Black 871-443

Medium Brown 871-128



MAKEUP MUST-HAVES

Double-duty color.

Avon True Color Be Blushed Cheek Color
For cheeks and lips.
.14 oz. net wt. reg. \$13
\$8.99



Seamless coverage.

Avon Pro Flawless Makeup Applicator
2 1/8" L x 1 1/4" W.
Non-latex polyurethane.
900-650
reg. \$7
\$4.50 each



Go for gel.

Gel Finish 7-in-1 Nail Enamel
.4 fl. oz. reg. \$10

Gel Finish Top Coat
(not shown)
Extend the life of your mani.
.4 fl. oz.
770-362
reg. \$10
\$6.39 each



Come clean in a swipe.

Makeup Remover Wipes with Mineral Complex
For face and eyes.
24 wipes.
109-226 reg. \$10
\$7.49



Set it and forget it.

Avon True Color Makeup Setting Spray
2 fl. oz.
579-382
reg. \$15
\$9.99



Gently remove it all.

Avon True Color Moisturizing Eye Makeup Remover Lotion
2.7 fl. oz.
579-359
reg. \$8
\$4.99



FRAGRANCE

AVON
—
THE WORLD'S
best-selling
fragrance
BRAND

From *alluring eau de parfums* to *spirited colognes*, fresh florals to sensual woods, each bottle in our collection lets you *express yourself*.

FAR AWAY INTENSE

A wanderlust for the exotic.

Paying homage to the iconic Far Away family of fragrances, our new intense variations have potent precious ingredients and a longer wear time for a luxe feel that lasts.



NEW

**Far Away Intense
Eau de Parfum
warm & exotic**

Be transported to the exotic and beyond. A potent blend of freesia, jasmine absolute and enticing amber. The journey begins now. 1.7 fl. oz. **931-332**
reg. \$30
\$24.99

FAR AWAY INFINITY INTENSE

Escape to a world full of infinite possibilities. A potent, luminous blend of radiant bergamot, jasmine sambac and sensual sandalwood takes you wherever you desire.



NEW

**Far Away Infinity Intense
Eau de Parfum
fresh & sweet**
1.7 fl. oz.
931-495
reg. \$30
\$24.99

FRAGRANCE

FAR AWAY BEYOND INTENSE

Travel to the destination of your dreams. Celebrate the nomadic spirit with this potent blend of alluring jasmine, fresh orange blossom and warm tonka bean.

RUB HERE TO
EXPERIENCE
FAR AWAY BEYOND
INTENSE



NEW

**Far Away Beyond Intense
Eau de Parfum**
warm & exotic
1.7 fl. oz. **932-726**
reg. \$30
\$24.99

Travel Spray
.3 fl. oz. **811-727**
reg. \$16
\$12.99

Luxury Body Wash
6.7 fl. oz.
932-931
reg. \$20
\$14.99

Luxury Body Crème
5 fl. oz.
932-711
reg. \$23
\$18.99

WOMEN'S FRAGRANCE



**Far Away
Eau de Parfum**
warm & exotic
Freesia, sheer
jasmine and
enticing amber.
1.7 fl. oz.
685-712
reg. \$25
\$16.99



**Far Away Gold
Eau de Parfum**
warm & exotic
Ylang-ylang,
Indian jasmine and
Madagascar vanilla.
1.7 fl. oz.
685-727
reg. \$25
\$16.99



**Far Away Infinity
Eau de Parfum**
fresh & sweet
Radiant bergamot,
jasmine sambac and
sandalwood.
1.7 fl. oz.
318-481
reg. \$25
\$16.99

Scented Shampoo

The rich, nourishing lather cleanses and protects without weighing hair down for ultimate volume. Lightweight formula leaves hair feeling soft, looking healthy and beautifully scented. Formulated to be gentle on all hair types. Each, 11.8 fl. oz. Rare Pearls **685-750**

Far Away **012-068**

Haiku **685-746**

reg. \$13

\$10.99 each



**Imari Seduction
Eau de Toilette**
warm & indulgent
Wild berries, hypnotic
purple orchid and
patchouli.
1.7 fl. oz.
452-897
reg. \$25
\$16.99



Imari Eau de Toilette
warm & exotic
Italian bergamot,
tempting jasmine
and amber.
1.7 fl. oz.
871-496
reg. \$25
\$16.99

Rare Platinum Intense Eau de Parfum
warm & dreamy
 Your new prized possession. The most coveted ingredients meld in this rich, potent fragrance as notes of iris, warm ambrette and smooth vetiver immerse you in dreamy luxury. 1.7 fl. oz. **787-660**
 reg. \$30
\$24.99

Luxury Body Wash
 6.7 fl. oz. **787-603**
 reg. \$20
\$14.99

Luxury Body Crème
 5 fl. oz. **787-440**
 reg. \$23
\$18.99



Unforgettably
CONFIDENT

RARE a treasure beyond compare

EXQUISITE
 in its simplicity

Rare Pearls Eau de Parfum
warm & dreamy
 Timeless. Romantic. A potent, luminous blend of shimmering magnolia, white pepper and creamy rosewood, taking elegance and romance to new heights. Each, 1.7 fl. oz.

Intense
783-297
 reg. \$30
\$24.99

Original
933-120
 reg. \$25
\$16.99



Show off your
RADIANCE

Rare Gold Eau de Parfum
warm & indulgent
 Luxuriate in the radiance. A potent fragrance that envelops you in the warmth of pure gold with opulent notes of mandarin zest, ylang-ylang and golden amber. Each, 1.7 fl. oz.

Intense
784-126
 reg. \$30
\$24.99

Original
933-115
 reg. \$25
\$16.99



Rare Diamonds Eau de Parfum
warm & dreamy
 Sparkling plum blossom, diamond orchid and cashmere woods. 1.7 fl. oz. **319-325**
 reg. \$25
\$16.99



Rare Amethyst Eau de Parfum
warm & indulgent
 Sweet plum, blooming violet and sandalwood. 1.7 fl. oz. **933-062**
 reg. \$25
\$16.99



FRAGRANCE

**Haiku Sacred Intense
Eau de Parfum**
fresh & clean
1.7 fl. oz. 579-750
reg. \$30
\$24.99

Luxury Body Wash
6.7 fl. oz. 581-541
reg. \$20
\$14.99

Luxury Body Crème
5 fl. oz. 580-000
reg. \$23
\$18.99



Haiku Sacred Intense

Inspired by the alluring contrast of freshness and warmth, discover a divine blend of uplifting tangerine, rose de mai and earthy driftwood, balancing the beauty of nature.

HAIKU serene. divine. elegant.

A sense of harmony & elegance.

**Haiku
Eau de Parfum**
fresh & clean
An airy floral evoking the serenity of a beautiful garden oasis, blooming with Japanese yuzu, delicate muguet and blonde woods.
Each, 1.7 fl. oz.

Intense 097-110
reg. \$30
\$24.99

Original 601-030
reg. \$25
\$16.99

Intense Travel Spray
.3 fl. oz. 880-353
reg. \$16
\$12.99



A serene garden of pure bliss.

**Haiku Kyoto Flower
Eau de Parfum**
fresh & clean
Delight in an elegant bouquet of violet leaf, white peony and soft cotton musk.
Each, 1.7 fl. oz.

Intense 578-811
reg. \$30
\$24.99

Original 144-352
reg. \$25
\$16.99



A cool and focused moment of mindfulness.

**Haiku Reflection
Eau de Parfum**
fresh & clean
Radiant water accord, acacia blossom and amber wood. 1.7 fl. oz.
617-657 reg. \$25
\$16.99



LYRD layers redefined

Capture the warmth of the sun.

LYRD
Rose du Soleil
Eau de Parfum
fresh & vibrant
 Radiant notes of sun-ripened raspberry, enchanting rose and spicy patchouli.
 1.7 fl. oz.
408-042
 reg. \$36
\$29



A romantic floral that surprises and delights.

LYRD
Bouquet de Freesia
Eau de Parfum
fresh & clean
 An unexpected mix of sweet freesia, tulip and warm amber.
 1.7 fl. oz.
129-269
 reg. \$36
\$29



The essence of lush, glistening blooms in the early morning light.

LYRD
Peony Rosé Eau de Parfum
fresh & clean
 A fresh composition of watery florals, a new day unfolds with sparkling notes of dewy peony petals, pink currant and sheer musk.
 1.7 fl. oz.
616-210
 reg. \$24
\$20



A bright floral that lets you shine.

LYRD
Honeysuckle Blossom Eau de Parfum
fresh & sweet
 Sparkling notes of delicate apple blossom, lively honeysuckle nectar and radiant vanilla orchid.
 1.7 fl. oz.
616-282
 reg. \$24
\$20



FRAGRANCE

Explore a world of floral delights.

LYRD
Sparkling Neroli
Eau de Parfum
fresh & vibrant
 Experience the crisp and vibrant freshness of sparkling neroli blended with uplifting bergamot and warm musk.
 1.7 fl. oz.
483-546
 reg. \$36
\$29



Travel Spray
 .3 fl. oz.
826-305
 reg. \$19
\$15.50

NEW

Hair & Body Mist
 Caress your tresses and create a soft cocoon of scent with a gentle mist for hair and body! Featherlight microconditioners that won't weigh your hair down. Imparts a subtle, healthy-looking shine. 4 fl. oz.
930-594
 reg. \$22
\$18





fragrance artistry

Discover curated ingredients that are exquisite alone but even more fascinating together.

LYRD Artisan Cherry Vetiver Eau de Parfum
warm & indulgent
 Sweet wild cherry blends with smooth Haitian vetiver.
 1.7 fl. oz. **362-972**
 reg. \$53
\$42

Travel Spray
 .3 fl. oz. **245-744**
 reg. \$21
\$17

LYRD Artisan Santal Musk Eau de Parfum
warm & exotic
 Indian sandalwood mixes with magnetic white musk.
 1.7 fl. oz. **362-991**
 reg. \$53
\$42

Travel Spray
 .3 fl. oz. **245-759**
 reg. \$21
\$17



scents of the season

❖ **LYRD Candle**
 Each 3-wick, 11 oz. candle gives 30 hours of burn time. 4 1/4" diam. x 3 1/8" H. Glass jar, paper dust cover, soy blend wax. Assembled in USA.
 reg. \$25
\$19.99 each

NEW
 ❖ **LYRD Frosted Balsam Candle**
 Fall for fresh notes of iced apple, crunchy pine cone and seasonal frosted balsam. **511-301**

NEW
 ❖ **LYRD Pumpkin Pie Candle**
 Decadent pumpkin, sweet cinnamon sugar and vanilla create a comforting and delectable delight for the senses. **511-297**

NEW
 ❖ **LYRD Maple Latte Candle**
 Enjoy a drizzle of gooey Vermont maple syrup, topped with pistachio and sweet brown sugar. **511-340**



❖ **LYRD Rose Blossom & Musk**
 Pink peony, rose and soft musk. **908-511**



❖ **LYRD Peony & Cedar**
 Fresh eucalyptus, peony and white cedar. **377-326**



❖ **LYRD Violet & Birch**
 Delicate violet, birch and vanilla. **908-210**



❖ **LYRD Juicy Currant & Magnolia**
 Juicy currant, rhubarb and magnolia. **908-187**



Be inspired by the past.

Gilded Eau de Parfum
fresh & vibrant
 Watery rhubarb, violet leaves and rich black currant. 1.7 fl. oz.
774-501
 reg. \$50
\$39

Shower Gel 130-311
Body Lotion 129-713
 Each, 6.7 fl. oz.
 reg. \$19
\$14.99 each



Embrace the present.

XXI Eau de Parfum
fresh & clean
 Sparkling orange, fresh sage and patchouli. 1.7 fl. oz.
774-520
 reg. \$50
\$39

Shower Gel 130-680
Body Lotion 129-751
 Each, 6.7 fl. oz.
 reg. \$19
\$14.99 each



Look to the future.

Techtopian Eau de Parfum
fresh & vibrant
 Magnolia, white rose and warm musk. 1.7 fl. oz.
774-425
 reg. \$50
\$39

Shower Gel 264-924
Body Lotion 130-292
 Each, 6.7 fl. oz.
 reg. \$19
\$14.99 each

GINZA STEFANY

A beautiful fragrance collection that explores the story of steadfast lovers Steve and Stefany and the power of their eternal love.

Ginza Stefany In My Arms Eau de Parfum
fresh & sweet
 Sunlit gardenia, black currant and delicate peach. 1.69 fl. oz.
408-922 reg. \$40
\$34

Ginza Stefany Always Beside You Eau de Parfum
warm & exotic
 Orange leaf, tuberose and earthy musk. 1.69 fl. oz.
155-303 reg. \$52
\$43

Ginza Stefany Wish You Were Here Eau de Parfum
fresh & clean
 Sweet hawthorn berry, ripe pear and sensuous patchouli. 1.69 fl. oz.
405-149 reg. \$40
\$34

NEW

Wish You Were Here Hair & Body Mist
 Featherlight microconditioners won't weigh your hair down. Imparts a subtle, healthy-looking shine. 4 fl. oz.
623-826 reg \$22
\$18



FRAGRANCE



IT'S BACK!

Topaze Cologne
fresh & clean
 An exquisite expression of the multifaceted jewel for which it was named. Indulge in a sparkling blend of jasmine, rose and sheer musk. 1.7 fl. oz. **735-217** reg. \$18 **\$11.99**

Timeless Cologne
warm & exotic
 Cardamom, jasmine and patchouli. 1.7 fl. oz. **037-930** reg. \$18 **\$11.99**



Night Magic Cologne
warm & exotic
 Neroli, jasmine and musk. 1.7 fl. oz. **168-682** reg. \$18 **\$11.99**



Sweet Honesty Cologne
warm & dreamy
 Lily of the valley, rose and cedarwood. 1.7 fl. oz. **037-595** reg. \$18 **\$11.99**



Free O₂ Eau de Toilette
fresh & clean
 White peach tea, airy honeysuckle and musk. 1.7 fl. oz. **265-658** reg. \$18 **\$11.99**



Odyssey Cologne
warm & dreamy
 Tuberose, ylang-ylang and warm oakmoss. 1.7 fl. oz. **168-697** reg. \$18 **\$11.99**



Candid Cologne
warm & exotic
 Bergamot, tuberose and patchouli. 1.7 fl. oz. **038-295** reg. \$18 **\$11.99**



Today Eau de Parfum
fresh & clean
 Magnolia blossoms, hibiscus petals and silk musk. 1.7 fl. oz. **325-920** reg. \$30 **\$25**



Avon Prima Eau de Parfum
warm & dreamy
 Delicate plum, pink rose and white patchouli. 1.7 fl. oz. **577-887** reg. \$30 **\$25**



Avon Prima Noir Eau de Parfum
warm & indulgent
 Enticing violet, opulent jasmine and creamy vanilla noir. 1.7 fl. oz. **829-835** reg. \$30 **\$25**



Live Out Loud Eau de Parfum
fresh & vibrant
 A free-spirited expression of sweet wild strawberry, sparkling mimosa and comforting fluffy vanilla. 1.7 fl. oz. **142-000** reg. \$40 **\$25**



Velvet Eau de Parfum
warm & indulgent
 Luscious Mediterranean fig, pomegranate, sumptuous Bulgarian rose and warm velvet patchouli. 1.7 fl. oz. **155-409** reg. \$30 **\$27**



WILD COUNTRY an untamed spirit



Wild Country Cologne
fresh & aromatic
 A rugged blend of lavender, coriander seed and sandalwood. 3 fl. oz.
086-466 reg. \$22
\$13.99

Wild Country Aftershave Splash
 4 fl. oz.
366-432
 reg. \$13
\$9.99



Wild Country Hair & Body Wash
 5 fl. oz. **364-080**
 reg. \$8
\$3.99



BLACK SUEDE effortlessly cool



Black Suede Hair & Body Wash
 5 fl. oz. **366-318**
 reg. \$8
\$3.99



Black Suede Aftershave Conditioner
 3.4 fl. oz. **364-353**
 reg. \$8
\$3.99



Black Suede Eau de Toilette
fresh & aromatic
 A fusion of bergamot, soft leather and oak moss. 3.4 fl. oz.
918-514 reg. \$22
\$13.99



FRAGRANCE

MEN'S FRAGRANCE



Mesmerize Cologne
warm & intoxicating
Bergamot, spicy cardamom and amber.
3.4 fl. oz. **871-458**
reg. \$25
\$16.99



Mesmerize Black Eau de Toilette
warm & intoxicating
Pepper, addictive nutmeg and tonka bean. 3.4 fl. oz.
305-667
reg. \$25
\$16.99



Perceive Cologne
fresh & clean
Sparkling citrus, sage and cedarwood.
3.4 fl. oz.
194-550
reg. \$25
\$16.99



Avon Exploration Eau de Toilette
fresh & clean
Fresh orange, silver sage and vetiver. 2.5 fl. oz.
593-666
reg. \$25
\$16.99



Blue Escape Eau de Toilette
fresh & clean
Ocean mist, white pepper and coastal driftwood. 2.5 fl. oz.
600-579
reg. \$25
\$16.99



Alpha Eau de Toilette
fresh & aromatic
Charismatic verbena, juniper berries and cedarwood.
3.4 fl. oz. **088-598**
reg. \$25
\$16.99



Avon Prime Eau de Toilette
fresh & clean
Lavender, refreshing spearmint and cedarwood.
2.5 fl. oz. **271-960**
reg. \$25
\$16.99

MEN'S FRAGRANCE



Studio 1886 Legendary All-in-One Hair & Body Wash
Richly lathering formula that leaves hair and skin feeling clean and lightly scented. 6.7 fl. oz.
908-120 reg. \$19
\$14.99



Studio 1886 Legendary All-in-One Gel Moisturizer
Lightweight gel moisturizer that softens beard hair and helps to soothe irritated skin after shaving. 5.1 fl. oz.
908-172 reg. \$19
\$14.99



Studio 1886 Legendary fresh & aromatic
Vibrant lemon, patchouli and salted amber.
1.7 fl. oz. **269-820**
reg. \$50
\$39

Gentology Herb & Aloe All-Over Wash
For face, hair and body. Washes away dirt and sweat without overdrying. Aloe and natural herbal extracts help to calm and soothe, refresh and energize, and deodorize. No parabens or mineral oil. Dermatologist-tested.
10.1 fl. oz. **127-558** reg. \$16
\$13.65

Gentology Herb & Aloe All-in-One Moisturizer
Convenient lotion/essence formula tones, moisturizes, helps visibly brighten and smooth wrinkles...all in one. Use AM/PM on face, neck and body after cleansing and shaving. With aloe, herbal and citrus extracts, and niacinamide. No parabens or mineral oil. Dermatologist-tested.
5.1 fl. oz. **127-490** reg. \$16
\$13.65

Scented softness

Perfumed Skin Softener for Her

- Haiku **813-973**
 - Candid **103-926**
 - Far Away **812-981**
 - Night Magic
 - Evening Musk **104-129**
 - Odyssey **104-171**
 - Sweet Honesty **104-463**
 - Timeless **104-478**
 - Imari **818-239**
- Each, 5 fl. oz.
reg. \$8
\$3.99 each



Body Lotion

- Haiku
 - Far Away **678-016**
 - Rare Pearls **356-564**
 - 933-517
- Each, 6.7 fl. oz.
reg. \$10
\$6.99 each



Perfumed Liquid Deodorant
Soft floral scent.
2 fl. oz. **687-681**
reg. \$6
\$4.50



Roll-On Anti-Perspirant Deodorant For All

- Feelin' Fresh Original **925-546**
 - Cool Confidence Baby Powder **926-815**
 - Cool Confidence Original **926-777**
 - On Duty Unscented **926-820**
 - On Duty Original **925-512**
 - On Duty Sport **094-365**
- Each, 2.6 fl. oz.
reg. \$3.60
\$2.69 each



Roll-On Anti-Perspirant Deodorant For Her

- Skin So Soft Soft & Sensual **714-861**
 - Candid **836-230**
 - Far Away **836-226**
 - Haiku **836-264**
 - Imari **180-887**
 - Night Magic
 - Evening Musk **836-298**
 - Odyssey **836-317**
 - Rare Gold **836-250**
 - Rare Pearls **836-245**
 - Sweet Honesty **941-579**
 - Timeless **941-583**
- Each, 2.6 fl. oz.
reg. \$3.60
\$2.69 each



Roll-On Anti-Perspirant Deodorant For Him

- Black Suede **337-403**
 - Mesmerize **663-442**
 - Wild Country **941-602**
- Each, 2.6 fl. oz. reg. \$3.60
\$2.69 each



NEW

Sterling Silver Solitaire Engagement Ring
1.5-ct. equivalent emerald-cut stone.
Sizes:
5 146-814 6 146-833
7 146-852 8 146-871
9 146-905 10 146-910
reg. \$49.99
\$39.99

Sterling Silver Baguette Wedding Ring
Clear CZ baguettes.
Sizes:
5 146-924 6 148-051
7 150-521 8 150-828
9 150-957 10 150-976
reg. \$58.99
\$44.99

Sterling Silver North Star Necklace
18" L with 1" extender and 1 1/4" L pendant.
146-776
reg. \$74.99
\$59.99



**STUNNING
STERLING**

Say "I do" to genuine .925 sterling silver.

NEW

Sterling Silver Collections



Oceanic Collection
Genuine London blue nano stones and CZ accents set in .925 sterling silver.

Necklace
.75-ct. equivalent. 18" L with 1" extender and 1/2" L pendant.
150-282
reg. \$69.99
\$54.99

Ring
.75-ct. equivalent, 1/4" diam. Sizes:
5 151-111 6 151-150
7 151-179 8 151-183
9 151-221 10 151-289
reg. \$58.99
\$44.99

Earrings
.50-ct. t.w. equivalent. Pierced studs. 151-073
reg. \$64.99
\$49.99



Sterling Silver Pavé Stud Earrings
.75-ct. equivalent iridescent CZ stones with CZ pavé. Pierced.
827-077
reg. \$42.99
\$32.99

Emerald Nano Stone Drop Earrings
.75-ct. t.w. equivalent emerald nano stones set in sterling silver with clear CZ accents. Fishhook. Pierced.
827-062
reg. \$49.99
\$39.99

2-pair earrings set

2-Pack Earrings
Freshwater pearls and 1-ct. t.w. equivalent CZ set in sterling silver. Pierced studs.
827-058
reg. \$49.99
\$39.99 the pack

STERLING KEEPSAKES

Vivid colored stones set in genuine .925 sterling silver for meaningful mementos.



NEW

Sterling Silver Birthstone Teardrop Necklace

.75-ct. equivalent. Colored CZ unless otherwise noted. Sterling silver necklace, 18" L with 1" extender. reg. \$49.99
\$39.99 each



January
811-966



February
811-970



March
811-985



April
811-990



May*
812-006



June
812-010



July**
826-893



August
826-908



September*
826-912



October
826-927



November
827-039



December
827-043

NEW

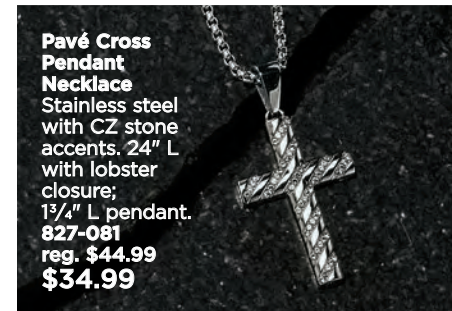
Men's Stainless Steel Collection

JEWELRY



Necklace and Bracelet Set
Round wheat chain, 21" L necklace and 9" L bracelet. Lobster closure. **831-320**
reg. \$42.99
\$32.99 the set

necklace and bracelet set



Pavé Cross Pendant Necklace
Stainless steel with CZ stone accents. 24" L with lobster closure; 1 3/4" L pendant. **827-081**
reg. \$44.99
\$34.99



Radiant Cross Statement Ring
Stainless steel.
Sizes:
9 **831-334**
10 **831-702**
11 **831-740**
12 **833-380**
13 **833-614**
reg. \$34.99
\$26.99



Cross Beaded Bracelet
9" L glass beads. 3/4" L stainless steel cross. Lobster closure. **828-528**
reg. \$39.99
\$29.99



Men's Stainless Steel Date Watch
Blue and red accents with 43mm diam. case. Water-resistant 3ATM with date indicator and luminous markers. Adjustable band, 8 1/2" L. **833-743**
reg. \$109.99
\$89.99

TIME FOR ELEGANCE

Stately timepieces for him and her. Crafted with precision engineering and a stylish aesthetic from Boussivie.



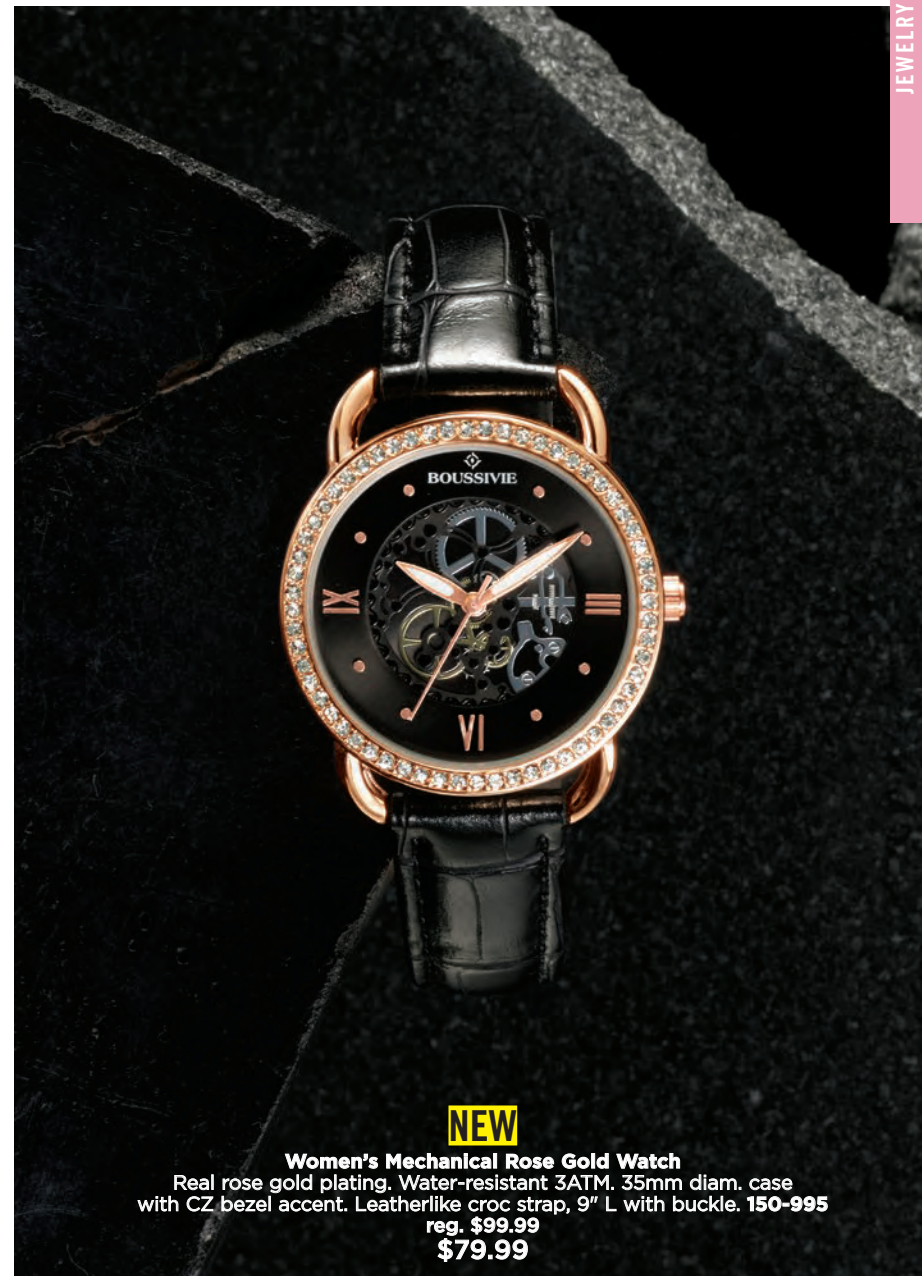
NEW

Men's Automatic Skeleton Watch

Real rose gold plating. Water-resistant 3ATM. 43mm diam. case with faux-chronometers accent. Leatherlike croc strap, 10" L with buckle. **151-001**

reg. \$99.99

\$79.99



NEW

Women's Mechanical Rose Gold Watch

Real rose gold plating. Water-resistant 3ATM. 35mm diam. case with CZ bezel accent. Leatherlike croc strap, 9" L with buckle. **150-995**

reg. \$99.99

\$79.99



A

A. ♦ Lace-Up-Detail Top
 Purple long-sleeve pullover top with lace-up details on shoulders. Polyester, rayon and spandex. Center back length: 24½" on M; 26½" on 1X. Machine wash, line dry. Imported.
 XS(0-2) **319-029**
 S(4-6) **319-105**
 M(8-10) **319-196**
 L(12-14) **319-200**
 XL(16) **319-220**
 1X(18W-20W) **320-344**
 2X(22W-24W) **320-473**
 3X(26W-28W) **320-583**
 reg. \$37.99
\$28.99

B. ♦ Dolman Button-Sleeve Top

Camo-printed top with slight high/low hem. Button detail on cuffs. Polyester/spandex. Center back length: 27" on M; 29" on 1X. Machine wash, line dry. Imported.
 XS(0-2) **356-110**
 S(4-6) **356-397**
 M(8-10) **356-841**
 L(12-14) **356-951**
 XL(16) **356-966**
 1X(18W-20W) **356-970**
 2X(22W-24W) **356-985**
 3X(26W-28W) **356-990**
 reg. \$46.99
\$36.99

STUDIO
1886

COOL
FOR FALL

Sweater weather is back! Kill the chill with cozy, casual silhouettes and slip into something a little more comfortable.



B

crew neckline



C

C. ♦ Cozy Crew-Neck Tunic

Dark-green, long-sleeve tunic with side slits and leatherlike detail on neckline and front. Viscose/polyester. Center back length: 27½" on M; 29½" on 1X. Machine wash, dry flat. Imported.
 XS(0-2) **320-598** XL(16) **323-578**
 S(4-6) **320-621** 1X(18W-20W) **323-620**
 M(8-10) **320-655** 2X(22W-24W) **323-821**
 L(12-14) **323-009** 3X(26W-28W) **325-107**
 reg. \$42.99
\$32.99

D. ♦ Cowl-Neck Button-Detail Top

Dark-red, long-sleeve top with asymmetrical decorative-button detail. Viscose, polyester and spandex. Center back length: 26" on M; 28" on 1X. Machine wash, dry flat. Imported.
 XS(0-2) **325-126** XL(16) **329-208**
 S(4-6) **325-183** 1X(18W-20W) **333-690**
 M(8-10) **325-198** 2X(22W-24W) **335-119**
 L(12-14) **328-819** 3X(26W-28W) **335-123**
 reg. \$44.99
\$34.99



D

contemporary comfort gets a style makeover



can be worn open or closed with button



❖ **Soft Asymmetrical Cardigan**

Tan long-sleeve cardigan with asymmetrical front. Viscose, polyester and spandex. Center back length: 28" on M; 30" on 1X. Machine wash, dry flat. Imported.

XS(0-2) 335-305	XL(16) 339-980
S(4-6) 337-327	1X(18W-20W) 340-038
M(8-10) 337-331	2X(22W-24W) 343-037
L(12-14) 337-384	3X(26W-28W) 343-128

reg. \$48.99
\$38.99

❖ **Cozy Long Cardigan**

Grey long open-front cardigan with leatherlike trim. Side seam pockets. Cotton/polyester. Center back length: 34½" on M; 36½" on 1X. Dry clean only. Imported.

XS(0-2) 351-945	XL(16) 354-270
S(4-6) 351-950	1X(18W-20W) 354-519
M(8-10) 351-964	2X(22W-24W) 355-716
L(12-14) 354-246	3X(26W-28W) 355-720

reg. \$69.99
\$54.99



❖ **Crew-Neck Button Dress**
Red pullover dress with ¾-length raglan sleeves. Decorative button detail near left shoulder. Slight high/low hem with side slits. Polyester, rayon and spandex. Center back length: 35" on M; 37" on 1X. Machine wash and dry. Imported.

XS(0-2) 343-610
S(4-6) 343-883
M(8-10) 343-902
L(12-14) 343-921
XL(16) 343-936
1X(18W-20W) 343-940
2X(22W-24W) 344-660
3X(26W-28W) 348-438

reg. \$56.99
\$44.99



❖ **Cinched-Waist Knit Dress**

Black long-raglan-sleeve dress with cuffs and side seam pockets. Adjustable drawstring at waist. Cotton/polyester dress with cotton/spandex ribbed cuffs. Center back length: 39" on M; 41½" on 1X. Machine wash, dry flat. Imported.

XS(0-2) 347-200	XL(16) 351-710
S(4-6) 347-229	1X(18W-20W) 351-725
M(8-10) 350-092	2X(22W-24W) 351-744
L(12-14) 351-357	3X(26W-28W) 351-778

reg. \$56.99
\$44.99

❖ **2-Pack Long Sleeve Tunics**

Multi (black/grey) and blue long-sleeve rib tunics with side slits, slightly rounded hem and crew neck. Center back length: 27" on M; 28½" on 1X. Rayon/polyester/spandex. Machine wash, dry flat. Imported.

XS(0-2) 351-270	XL(16) 351-342
S(4-6) 351-290	1X(18W-20W) 351-361
M(8-10) 351-304	2X(22W-24W) 351-376
L(12-14) 351-319	3X(26W-28W) 351-380

reg. \$49.99
\$39.99 the pack of 2



Step into Fall



◆ **Short Buckle Bootie***
Tan brushed-suede-like bootie with elastic gore on outer side and inside zipper. Decorative buckle accent. 1½" heel. Imported.

6M 365-159	9M 368-310
7M 366-160	10M 369-580
8M 367-883	11M 369-738

reg. \$49.99
\$39.99

*Half sizes, order size up.



◆ **Flat Tassel Loafer***
Burgundy leatherlike loafer with tassel accents. Cushion insole. Flat heel. Imported.

6M 370-192	7M 370-207	8M 380-371
9M 381-196	10M 382-078	11M 383-552

reg. \$46.99
\$36.99



◆ **Faux-Suede Wedge Sneaker***
Black perforated faux-suede sneaker. Elastic gore on upper and inside zipper. 2" wedge heel. Imported.

6M 383-590	7M 383-639	8M 383-715
9M 383-720	10M 384-420	11M 385-560

reg. \$44.99
\$34.99

◆ **Fall Fashion 4-Pack Tees**
V-neck short-sleeve tees with chest pocket detail and rounded hem. Includes pink-camo print and solid colors in red, tan and blue. Cotton/polyester. Center back length: 26" on M; 28" on 1X. Machine wash, dry flat. Imported.

XS(0-2) 357-704	S(4-6) 357-742
M(8-10) 357-761	L(12-14) 360-051
XL(16) 360-066	
1X(18W-20W) 363-816	
2X(22W-24W) 363-835	
3X(26W-28W) 365-144	

reg. \$46.99
\$36.99 the pack of 4

SIZE CHART PAGES 164 THRU 169

SIZE	BUST	WAIST	HIP
XS 0/2	30.5"-32"	23.5"-25"	32.5"-34"
S 4/6	33.5"-35"	26.5"-28"	35.5"-37"
M 8/10	36.5"-38"	29.5"-31"	38.5"-40"
L 12/14	39.5"-41"	32.5"-34"	41.5"-43"
XL 16	43"-44"	35.5"-36.5"	44.5"-45.5"
1X 18W/20W	46.5"-48.5"	39"-41"	48"-50"
2X 22W/24W	50.5"-52.5"	43"-45"	52"-54"
3X 26W/28W	54.5"-56.5"	47"-49"	56"-58"

Visit avon.com/fitguide for additional size and fit information.



FASHION



◆ **Everyday Ombré Leggings**
Full-length black-to-grey ombré leggings with inner pocket on waistband. Polyester/spandex. Inseam: 25½" on M; 26" on 1X. Machine wash, dry flat. Imported.

XS(0-2) 357-006
S(4-6) 357-010
M(8-10) 357-025
L(12-14) 357-030
XL(16) 357-188
1X(18W-20W) 357-192
2X(22W-24W) 357-207
3X(26W-28W) 357-427

reg. \$49.99
\$39.99

curve control

Go wireless with sleek, seamless, smooth support.

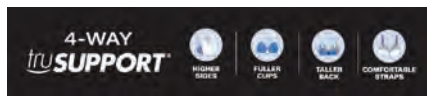


NEW

❖ **Playtex® Perfectly Smooth® Wirefree Bra (US4707)**

Sleek seamless cups for an invisible look under clothes. Cushion cotton-lined Stop the Slip® straps. Silky double-layer back. TruSupport design supports every curve with higher sides and back. Back closure. Lightly lined. Nylon/spandex, polyester lining. Hand wash, line dry. Imported. Sizes: 36-42B; 36-44C,D,DD; 36-42DDD (all colors). **reg. \$40**

\$34.99



❖ **Bali® Double-Support® Smoothing Wirefree Bra with Soft Touch Cool Comfort™ (DF0044)**

Back closure. Lightly lined. Nylon/spandex. Hand wash, line dry. Imported. Sizes: 34-42B; 34-44C,D,DD,DDD (all colors).

reg. \$40
\$32.99



❖ **Bali® Passion for Comfort® Minimizer Underwire Bra (DF3385)**

Minimizes by 1/2". Back closure. Lightly lined. Nylon/polyester/spandex. Hand wash, line dry. Imported. **White:** 34-44C,D,DD,DDD; 36-44G. **Sandshell, Cinnamon, Cocoa Brown, Soft Taupe or Black:** 32-44C,D,DD,DDD; 36-44G.

reg. \$44
\$34.99



A. ❖ Bali® Comfort Revolution® EasyLite™ Hi-Cut (DFEL62)

Nylon/spandex/cotton. Hand wash, line dry. Imported. Sizes: M/6, L/7, XL/8, 2XL/9 (all colors).

\$13 each

B. ❖ Bali® Comfort Revolution® EasyLite™ Brief (DFEL61)

Nylon/spandex/cotton. Hand wash, line dry. Imported. Sizes: M/6, L/7, XL/8, 2XL/9 (all colors).

\$13 each



FRESH FIJI

❖ **Fresh Fiji Sheet Detergent**
Seven stain-removing enzyme-blend. 30 easy-dissolving detergent sheets. Each, 9" x 8" W. reg. \$19.99
\$14.99 each

no measuring!



❖ **Fresh Fiji Shoe Deodorizer**
Eliminates tough odors on contact with the power of baking soda and persimmon. Great for all kinds of shoes, from leather to cotton. 10.1 fl. oz. **322-256** reg. \$9.99
\$7.99



❖ **Fresh Fiji Fabric Refresher With Wrinkle Release**
Freshens fabrics and smooths wrinkles. 16.9 fl. oz. **Fresh:** Clean laundry scent. **801-529**
Crisp: Vibrant aromatic scent. **322-260** reg. \$11.99
\$8.99 each



Package labels may vary.

❖ **Fresh Fiji Laundry Stain Remover**
Pretreats and removes tough set-in stains with a powerful enzyme formula. Helps to remove stains and boost color better than just laundry detergent alone.
❖ **Stain Remover Spray**
Easy and gentle spray for direct application without damaging fabrics. 16.9 fl. oz. **687-992** reg. \$12.99
\$9.99



❖ **Stain Remover Gel**
With soft brush applicator for gentle scrubbing action. 7.4 fl. oz. **687-590** reg. \$8.99
\$6.99



ODOR BUSTERS

❖ **Fresh Fiji Gel Beads Deodorizer**
Neutralizes odors for up to 70 days. Plastic. 5.29 oz. net wt. reg. \$9.99
\$7.99 each

Calming Lavender
323-248



Fresh Cotton
323-032



NEW

❖ **Fresh Fiji Car Air Freshener**
Eliminates odors and freshens any vehicle for up to 50 days. Easily clips onto car vents and allows you to control the fragrance intensity. .17 fl. oz. 2 1/4" diam. x 1 1/4" D with 2" L clip. Plastic. Imported. reg. \$7.99
\$5.99 each

Orange Blossom
721-472



White Cotton
721-597



❖ **Sirius Groom Pet Odor Eliminator**
Nature-derived rice and barley to absorb and neutralize odors. Light baby powder scent. For fabric and carpet use only, do not spray on pets. 13.5 fl. oz. **247-565** reg. \$12.99
\$9.99



❖ **Sirius Groom Shampoo for Dogs**
Alleviates itchiness and dryness by washing away allergens. Soothing oatmeal protects skin. Long-lasting scents. 16.2 fl. oz. **Lovely Berry** **247-436**
Baby Powder **247-493** reg. \$14.99
\$11.99 each



KITCHEN CLEANING SOLUTIONS

❖ Cucina Essentials Multi-Purpose Wipes

Bleach-free. Nature-derived formula with citric acid and pomegranate vinegar. Pomegranate scent. 60 sheets, each, 7⁷/₈" x 5⁷/₈". **307-530**
reg. \$8.99
\$6.99



❖ Cucina Essentials Dish Soap

Nature-derived. Non-drying, moisturizing formula leaves hands feeling soft and nourished. 16.9 fl. oz.

Lemon & Verbena
Zesty citrus scent. **322-222**

Garden Basil
Fresh herbal scent. **322-218**
reg. \$8.99
\$6.99
each



❖ Homestar Odor Eliminator for Fridge

No-spill solid gel formula with persimmon and eucalyptus extracts neutralizes fridge odors. Lasts up to 3 months. 14.8 oz. net wt. **793-165**
reg. \$7.99
\$5.99



❖ Homestar Heavy Duty Cleaning Wipes

Jumbo sized for double the cleaning power in a single sheet. Low pH formula and textured pattern. Fresh lemon scent. Fits Homestar Mop Stick. 50 sheets, each, 9¹/₂" x 11".

721-468
reg. \$11.99
\$8.99

❖ Homestar Rangehood & Kitchen Degreaser*

Super-strength formula for hard-to-remove grease. External oven use only. 16.2 fl. oz. **307-440**
reg. \$13.99
\$10.99



❖ Homestar Multi Purpose Cleaner*

Bleach-free, triple-action power cleaner. With citric acid, orange oil and baking soda to remove stubborn stains. Natural citrus scent. 16.9 fl. oz. **307-507**

reg. \$9.99
\$7.99



HOMESTAR

❖ Homestar Glass Cleaner*

Keep windows, mirrors, glass and more sparkling clean. Quick-drying, anti-fogging formula. 16.9 fl. oz.

093-100
reg. \$8.99
\$6.99



❖ Homestar Bathroom Cleaner

Just spray, let sit and wipe away! Fights tough soap scum, limescale, calcium and grime. Fresh green apple scent. 25.4 fl. oz.

092-635
reg. \$11.99
\$8.99



❖ Homestar Foaming Toilet Bowl Cleaner

Fights toilet rings and stains. Convenient pouch dispenser. Includes 5 pouches. 10.6 oz. total net wt.

090-298
reg. \$12.99
\$9.99



❖ Homestar Mop Stick

Easy-grip handle. Head size: 9⁷/₈" L x 3⁷/₈" W. Handle: 39¹/₂" L x 5⁷/₈" diam. Plastic/EVA/aluminum. Imported. **686-541**
reg. \$19.99
\$14.99

❖ Homestar Mop Cloths

Remove and clean dirt and dust. Safe on all finished floors. Reversible and disposable. 40 sheets, each 11" x 8³/₄". Imported.



❖ Dry Mop Cloths:

Textured diamond pattern. **686-848** reg. \$7.99
\$5.99



❖ Wet Mop Cloths:

Textured dot pattern. **686-670** reg. \$11.99
\$8.99

traps & locks in dirt & dust

360°
swivel head
with cloth
grippers



SKIN-SOFTENING BATH OILS

Our signature oils are designed to act like skin's natural oils to **keep skin hydrated during and after a bath or shower.**

Each, 16.9 fl. oz. reg. \$24
\$15.69 each



Original
Our best-selling bath oil!
With jojoba oil.
Fresh herbal scent.
941-105

Soft & Sensual
With argan oil.
Spicy floral scent.
941-124

Comforting Shea
With shea butter and oil. Vanilla, sandalwood and musk scent.
225-405

BODY

*Pampering oils. Luxurious lotions.
Revitalizing washes. We've got
something to keep every *body* soft,
smooth and refreshed...all day, every day.
So go ahead, *show more skin.**

ORIGINAL with jojoba oil and a fresh herbal scent.

THE WONDER OF JOJOBA OIL

A plant extract that mimics your skin's natural oils, with vitamins and minerals essential to keep skin soft and smooth to the touch.



**Bonus-Size
Body Lotion***
33.8 fl. oz.
941-545
reg. \$20
\$11.99



*Bonus-Size Body Lotion and Shower Gel (page 179) will be shipped with a cap and will not include a pump.

Replenishing Hand Cream
24+ hours of moisturization.
3.4 fl. oz. 941-268 reg. \$5
\$2.69

Bath Oil Spray
Locks in hydration. 5 fl. oz.
967-571 reg. \$14
\$8.49

Lip Balm
With jojoba oil, shea butter
and aloe extract. Grape flavor.
.14 oz. net wt. 958-150 reg. \$2
\$1.39



Bonus-Size Bath Oil
Keeps skin hydrated after
bath or shower. 25 fl. oz.
941-253 reg. \$30
\$19.99

Body Lotion
Layer on lasting hydration.
11.8 fl. oz. 935-338 reg. \$11
\$6.99

Gelled Body Oil
Dries to a silky finish.
6.76 fl. oz. 930-575 reg. \$13
\$7.99

Bonus-Size Shower Gel*
33.8 fl. oz. 170-731 reg. \$15
\$11.99

Shower Gel
Gently cleanses and hydrates.
5 fl. oz. 933-005 reg. \$8
\$4.69

SOFT & SENSUAL

with argan oil and a spicy floral scent.

THE WONDER OF ARGAN OIL

So precious, they call it "liquid gold." Packed with vitamin E, it helps to visibly restore skin's luster and keep it feeling irresistibly soft.



Bonus-Size Body Lotion*
33.8 fl. oz.
943-806
reg. \$20
\$11.99



*Bonus-Size Body Lotion and Shower Gel (page 181) will be shipped with a cap and will not include a pump.

Replenishing Hand Cream
24+ hours of moisturization.
3.4 fl. oz.
867-315
reg. \$5
\$2.69

Body Lotion
Layer on lasting hydration.
11.8 fl. oz.
934-312
reg. \$11
\$6.99



Bonus-Size Bath Oil
Keeps skin hydrated after a bath or shower.
25 fl. oz. 941-110
reg. \$30
\$19.99

Gelled Body Oil
Dries to a silky finish.
6.76 fl. oz. 930-628
reg. \$13
\$7.99

Bonus-Size Shower Gel*
33.8 fl. oz. 171-848
reg. \$15
\$11.99

Shower Gel
Gently cleanses and hydrates.
5 fl. oz. 934-240
reg. \$8
\$4.69



SKIN SO SOFT



Sensitive Skin Facial Hair Removal Cream
1 fl. oz. **934-384**
reg. \$10
\$5.79

Sensitive Skin Body Hair Removal Cream
4.2 fl. oz.
934-399
reg. \$10
\$5.79

FRESH & SMOOTH
hair removal with meadowfoam seed oil and aloe. **Franchise-free.**

Radiant Moisture Shower Gel
Gently cleanses and hydrates.
5 fl. oz.
933-813
reg. \$8
\$4.69



Radiant Moisture Bonus-Size Shower Gel*
33.8 fl. oz.
171-867
reg. \$15
\$11.99



Radiant Moisture Replenishing Hand Cream
24+ hours of moisturization.
3.4 fl. oz.
941-272 reg. \$5
\$2.69



Radiant Moisture Bonus-Size Bath Oil
Keeps skin hydrated after a bath or shower. 25 fl. oz.
938-959
reg. \$30
\$19.99



Radiant Moisture Bonus-Size Body Lotion*
33.8 fl. oz.
942-317
reg. \$20
\$11.99



Supreme Nourishment Bonus-Size Body Lotion*
Warm vanilla scent.
33.8 fl. oz. **945-612**
reg. \$20
\$11.99



*Bonus-Size Body Lotions and Shower Gel will be shipped with a cap and will not include a pump.

SUPREME NOURISHMENT WITH ENRICHING COCONUT OIL

THE LASTING NOURISHMENT OF COCONUT OIL WITH A LUSH TROPICAL SCENT.



Lip Balm
With aloe extract and shea butter. Tropical coconut flavor. 14 oz. net wt. **958-370**
reg. \$2
\$1.39

Oil Body Wash**
Softens with coconut oil and vitamin E. 11.8 fl. oz.
479-260 reg. \$15
\$9.99

Milk Lotion**
With skin-softening coconut milk. 11.8 fl. oz.
479-331
reg. \$17
\$11.59

Body Soufflé**
Airy, coconut water-infused soufflé leaves skin feeling soft all day. 6.7 fl. oz.
479-346
reg. \$16
\$10.49

**Avon will contribute 15% of the sales price of Supreme Nourishment Enriching Coconut Oil Milk Lotion, Oil Body Wash and Body Soufflé on page 183, up to \$700,000 in 2021, to American Cancer Society Making Strides Against Breast Cancer®. The American Cancer Society does not endorse any product or service. To learn more, visit MakingStridesWalk.org/TeamAvon





A pro body & facial massage at home!

This advanced massager set is designed to stimulate muscles through gentle contractions, **improving circulation and easing tension**, while it aids absorption of our Massage Gel that helps skin look **smoother, radiant and firmer**.

Eclat D'or Face & Body Massager

Stimulates facial and body muscles to improve tone, firmness and a healthy glow. USB rechargeable. 3" diam. x 2.6" H. **376-870** reg. \$240 **\$200**

Eclat D'or Face & Body Massage Gel

With serine and matrixyl to help your face and body look smoother and more radiant. Cooling formula helps muscles feel more relaxed. 6.7 fl. oz. **376-884** reg. \$32 **\$26.99**



WITH ELECTRICAL MUSCLE STIMULATION (EMS) TECHNOLOGY TO HELP SKIN LOOK AND FEEL REJUVENATED

- RELAXING
- COOLING
- HYDRATING
- FIRMING*

HELP GIVE YOUR SKIN A HEALTHY-LOOKING GLOW

200 ml / 6.7 fl. oz.



REV UP THE FIGHT AGAINST CELLULITE!

Smooth Moves Anti-Cellulite Massager

Use with gel to help smooth and firm skin. Mimics kneading action of a manual massage, targeting cellulite found on the thighs, hips, upper arms and buttocks. Rotating rollers help promote skin circulation and reduce the appearance of cellulite. Plug-in device. **011-296** reg. \$70 **\$62.99**



Smooth Moves Anti-Cellulite Cooling Gel
L-carnitine and chai hu help target fat cells for visibly smoother skin and improved texture. 6.7 fl. oz. **722-722** reg. \$21 **\$12.99**



Affirm Yourself Firming Body Cream
Caffeine complex stimulates natural collagen production to visibly banish crepey skin so skin looks more toned. 6.7 fl. oz. **522-970** reg. \$21 **\$12.99**



End of the Line Stretch Mark Minimizing Lotion
Shea butter and pomegranate extract stimulate natural elastin production for visibly reduced stretch marks. 6.7 fl. oz. **524-422** reg. \$21 **\$12.99**



So intense!
Healing moisture
that lasts 24 hours.

**Intensive Healing & Repair
Extra Strength Cream**
For the most severe dry-skin
conditions. Fragrance-free.
5.3 oz. net wt.
772-972
reg. \$8
\$4.79

**Bonus-Size
Intensive
Healing & Repair
Body Lotion***
Intense 72-hour
moisture for
extra-dry skin.
Fragrance-free.
33.8 fl. oz.
611-644
reg. \$20
\$12.69



**Bonus-Size
Daily Skin
Defense
Body Lotion***
Helps restore
moisture to
everyday
dry skin.
33.8 fl. oz.
611-625
reg. \$20
\$12.69



**Bonus-Size
Calming Relief
Body Lotion***
Instantly
soothes and
relieves dry,
itchy skin.
Fragrance-free.
33.8 fl. oz.
611-663
reg. \$20
\$12.69



*Bonus-Size Body Lotions
will be shipped with a cap
and will not include a pump.



**Moisture Therapy
+Balance and Soothe
Body Cream**
Soothing formula with
ingredients known to
help create a healthy
environment for skin's
microbiome and restore
balance. Replenishes
skin with moisture for
a smoother, softer,
healthier look. 5 fl. oz.
444-467
reg. \$18
\$15

Our advanced
microbiome
formulas with
prebiotics and
para-probiotics
help to balance
and soothe
your skin.

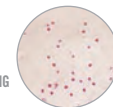
Moisture Therapy +Balance and Soothe
MICROBIOME are beneficial micro-flora that live on skin
as a protective layer, helping to keep skin looking healthy all over.

**Moisture Therapy
+Balance and Soothe
Body Lotion**
Contains ingredients
known to help
create a healthy
environment for
skin's microbiome
and restore balance.
Replenishes moisture
to leave skin softer,
smoother and
healthier-looking.
13.2 fl. oz. **438-082**
reg. \$25
\$20



**Moisture Therapy
+Balance and Soothe
Body Wash**
Use with +Balance and
Soothe Body Lotion or
Body Cream to help create
a healthy environment for
skin's microbiome to restore
balance and soften while it
gently cleanses. 13.2 fl. oz.
438-078
reg. \$23
\$18

BODY WASH HAS VISIBLE
CAPSULES FOR A REFRESHING
CLEANSING EXPERIENCE





energizing + playful

Avon Senses Sparkling Grapefruit & Orange Blossom

Wake up your senses with a juicy mix of zesty grapefruit, bright orange blossom, delicate honeysuckle and luscious peach.



Body Lotion*
With moisture-rich shea butter and vitamin E.
8 fl. oz.
034-725
reg. \$17
\$13.99

Body Mist*
With aloe vera extract, refreshes and leaves skin feeling soothed.
8 fl. oz.
034-687
reg. \$18
\$14.99

Shower Gel*
Moisturizing cleanser derived from coconut.
10 fl. oz.
034-763
reg. \$17
\$13.99

SENSES luxuriously scented, spa-inspired collections

Fresh Bergamot & Wild Mint
Seize the day with a fresh bouquet of dewy flowers mixed with spicy bergamot, clean wild mint and luminous solar musk.

Shower Gel
Coconut-derived cleanser.
10 fl. oz. **034-873** reg. \$17
\$13.99

Body Lotion
With shea butter and vitamin E.
8 fl. oz. **034-835** reg. \$17
\$13.99

Body Mist
With aloe vera extract.
8 fl. oz. **034-816** reg. \$18
\$14.99



Cozy Vanilla & Coconut
Envelop yourself in a cozy cloud of comforting vanilla, creamy coconut and calming chamomile.

Shower Gel
Coconut-derived cleanser.
10 fl. oz. **035-190** reg. \$17
\$13.99

Body Lotion
With shea butter and vitamin E.
8 fl. oz. **035-152** reg. \$17
\$13.99

Body Mist
With aloe vera extract.
8 fl. oz. **034-888** reg. \$18
\$14.99



*Avon will contribute 15% of the sales price of Sparkling Grapefruit & Orange Blossom Shower Gel, Body Lotion and Body Mist on page 188, up to \$700,000 in 2021, to American Cancer Society Making Strides Against Breast Cancer®. The American Cancer Society does not endorse any product or service. To learn more, visit MakingStridesWalk.org/TeamAvon



National Presenting Sponsor



Free of parabens, mineral oil, silicone, phthalates and dyes.

Enjoy these special prices and exclusive offers only when you shop with an Avon Representative.

SENSES

Senses Antibacterial Hand Gel
Each, 2.5 fl. oz. reg. \$7
\$3.99 each



**KILLS
99.99%
OF BACTERIA
IN 15
SECONDS**

Fresh Cucumber
& Melon
629-240

Silky Vanilla
629-183

Senses Hand Soap
8.1 fl. oz. reg. \$10
\$5.99

Fresh
Cucumber
& Melon
359-362



Senses Bubble Bath
Each, 24 fl. oz. reg. \$11
\$7.89 each



Soft Pink
425-052

Endless Ocean
425-048

Cherry Blossom
425-033



Cucumber
Melon
425-067



Sensitive
Skin
424-754



Orange &
Honeysuckle
047-808



Lavender
Garden
424-735



Lily & Honeysuckle
Blossom
423-394

SENSES turn your bath and shower into a scent-sation



**Vanilla Cream
Bubble Bath**
Rich and creamy.
24 fl. oz.
**425-029 reg. \$11
\$7.89**

**Silky Vanilla
Hydrating
Shower Gel**
Leaves skin
cleansed and
conditioned.
5 fl. oz. **462-105
reg. \$6
\$3.69**

**Silky Vanilla
Hand Soap**
Freshen up hands
with a comforting,
delightful vanilla
scent. 8.1 fl. oz.
**356-435 reg. \$10
\$5.99**

**comforting
+COZY**

Avon Senses Silky Vanilla
Snuggle up with the comforting fragrance
of silky vanilla and brown sugar.

**Senses
Hydrating
Shower Gel**
Each, 5 fl. oz.
reg. \$6
\$3.69 each

Fresh
Cucumber
& Melon
462-071

Blushing
Cherry
Blossom
462-033

Juicy
Pomegranate
& Mango
462-139





Rich in vitamins and omega acids for luxuriously nourished soft skin, and antioxidants to help protect skin from free-radical damage to keep it looking radiantly youthful.



VEILMENT MACADAMIA OIL

Revitalizing Foaming Shower Gel

A gel cleansing foam infused with macadamia nut oil to deeply nourish and condition skin so it feels soft and pampered. 6.7 oz. net wt. **250-219 reg. \$24 \$19**

Revitalizing Body Mousse

A soft, foamy mousse that deeply nourishes skin with pampering macadamia nut oil. So lightweight, it quickly melts into the skin for long-lasting moisturization. 6.7 oz. net wt. **249-879 reg. \$24 \$19**

VEILMENT Natural Spa collection



Himalaya Pink Salt Body Scrub & Cleanser

Mineral-rich Himalayan pink salt. Calming sage scent. 13.5 fl. oz. **473-257 reg. \$15 \$12.99**

Himalaya Pink Salt Exfoliating Soap

Daily body scrub and cleansing bar, with mineral-rich Himalayan pink salt, walnut shell, apricot seed and cranberry powder. Calming sage scent. 5.3 oz. net wt. **260-440 reg. \$8 \$6**

Dead Sea Salt Body Scrub & Cleanser

Israeli Dead Sea salt. Energizing citrus-ginger scent. 13.5 fl. oz. **473-242 reg. \$15 \$12.99**



Bamboo Charcoal Body Scrub & Cleanser

A gentle scrub and wash infused with Korean bamboo charcoal, Israeli Dead Sea salt, apricot seed and spruce. 13.5 fl. oz. **260-402 reg. \$23 \$18**



Black Rose Body Scrub & Cleanser

French rose oil and apricot-seed powder. Aromatic black rose scent. 13.5 fl. oz. **473-204 reg. \$15 \$12.99**



HEMP SEED OIL

ULTRA-NOURISHING

A naturally derived oil enriched with omega-3-6-9 fatty acids and vitamin E to help naturally nourish, hydrate and soften as it cleanses, for the look of healthy radiance.

Lip Balm

Hemp-infused lip balm enhanced with moisturizing jojoba and coconut oils for deeply hydrated, naturally conditioned lips. Each, .14 oz. net wt. Clear **957-058** Red **957-039** reg. \$2.50 **\$1.69**

Dry Body Oil

Light, easily absorbed. Helps deeply nourish and hydrate dry and irritated skin. Fragrance-free. Hypoallergenic. 5 fl. oz. **564-106** reg. \$35 **\$28**

Shower Shake

Creamy yet light, milky dual-phase formula infused with hemp seed oil and gentle cleansers. Hypoallergenic. Shake before use. 10.1 fl. oz. **157-363** reg. \$23 **\$18**

Bathing Bar

Plant-based bar soap gently cleanses. 3.2 oz. net wt. **157-469** reg. \$5 **\$4**



NO PARABENS, SULFATES, PHTHALATES, TRICLOSAN, CBD OR THC.

VEILMENT CBD every body needs CBD

Veilment CBD Multi-Balm Stick

Glides on smoothly. Soothes skin instantly. Great for rough spots, like elbows or knuckles, or any area where skin on your body feels dry. Not intended as lip balm. No THC. Each, .14 oz. net wt. Jasmine **408-391** Geranium **056-115** reg. \$4.50 **\$3.50 each**



Veilment CBD Dry Body Oil

Lightweight. Nongreasy. Quickly nourishes skin with instantly replenishing hydration while it helps reduce redness and soothe irritation so skin looks healthy and radiant. Free of fragrance, mineral oil, parabens, phthalates and THC. 3.73 fl. oz. **408-224** reg. \$37 **\$30**



Veilment CBD Nourishing Body Cream

Skin feels soft, smooth and nourished. Jasmine scent. No THC. 5 fl. oz. **333-685** reg. \$33 **\$29.50**



Veilment CBD Soothing & Nourishing Body Cream

Concentrated formula. Visibly soothes and smooths. Geranium scent. No THC. 1.7 fl. oz. **333-226** reg. \$33 **\$29.50**



Veilment CBD Cooling Body Roll-On Gel

With 100mg CBD, cooling menthol and nourishing essential oils for soothing relief, and an easy roll-on design to target any area of dry-skin discomfort. No THC. 2.5 fl. oz. **958-456** reg. \$24 **\$20**



ROSE SILK & AROMATHERAPY shower scents and essential oils

Passion & Beyond Rose Silk Bouquet Shower Gel

Soft, silky lather of nourishing plant-derived glycerin and a naturally derived, mild cleanser leaves skin refreshed, lightly scented and moisturized. 10.1 fl. oz. **102-293** reg. \$23 **\$18**

Body Emulsion

Elegantly fragranced with calming damask rose water and infused with moisturizing and soothing provitamin B5, it helps revitalize tired skin, leaving it feeling petal soft and exquisitely scented. 10.1 fl. oz. **102-327** reg. \$28 **\$22**



Avon Aromatherapy Minding My Mood 4-in-1 Essential Oil Blends

Natural multipurpose fragrance oils formulated to improve your state of mind anytime, anywhere.

Energize

With lively mandarin and stimulating ylang-ylang.

Calm

With comforting lavender and soothing star anise.

4 ways to use it:

1. Apply directly to pulse points, such as wrists, neck, temples and bottom of feet.
 2. Add to warm bath.
 3. Mix into body lotion.
 4. Add to room diffuser.
- Each, 1.7 fl. oz. **606-376** reg. \$28 **\$24.99**
boxed set of 2



**TRY AVON'S
HEAD-TO-TOE
FAVORITES!**

*Compared to Blanc Charcoal.

Make Life Beautiful Convenience Kit
Great for on the go! **578-807** reg. \$31 **\$25.99** 8-piece set

- **Veilment Natural Spa Black Rose Body Scrub & Cleanser**
With French rose oil and apricot-seed powder. Aromatic black rose scent. 1 fl. oz.
- **Skin So Soft Roll-On Anti-Perspirant Deodorant**
2.6 oz. net wt.
- **Travel Toothbrush** Plastic cover.
- **Whitening Essentials Perioe Black Charcoal Clean Mint**
With fluoride and 10X activated charcoal*. .7 oz. net wt.
- **Physiogel Daily Moisture Therapy Facial Lotion**
Lasting moisture to protect against recurrent dryness. 1.69 fl. oz.
- **Elastine PropoliThera**
- **Damage Repair Shampoo** 1.7 fl. oz.
- **Damage Repair Conditioner** 1.7 fl. oz. With vitamin-enriched beeswax, honey and royal jelly.
- **Make Life Beautiful Travel Pouch**
Vinyl. 4" L x 4 1/2" H x 3" W. Imported.

BATH & BODY

SOFY SANITARY PADS with 100% organic cotton cover

- Certified by internationally accredited OCS (Organic Content Standard)
- Free of dye, fragrance and chlorine... so it won't irritate your intimate areas
- Unique design for instant absorption and prevention of side leakage
- Thin, flexible material
- Secure adhesion
- Full coverage from light to heavy flow
- Easy disposal etiquette tab (Regular/Overnight)

Regular

Each, 9.84". **789-515** reg. \$12.49

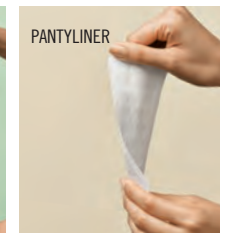
\$9.99 pack of 20

Overnight

Each, approx. 13".
789-520 reg. \$9.99
\$7.99 pack of 10

Regular Pantyliner

Each, approx. 6".
789-534 reg. \$12.49
\$9.99 pack of 40





deep & potent pain relief

Arthritis Pain Relief Cream
Helps relieve minor aches and pains associated with muscle aches and arthritis. Odor-free. Active ingredient: Capsaicin, .075%. 1.5 oz. net wt. **243-259** reg. \$13.99 **\$11.49**

soothes back & joint pain

Pain Relief Cream for Muscle, Back and Joint
Relieves minor pain from strains, sprains and backache. Active ingredients: Camphor, 4%, Menthol, 10%, Methyl Salicylate, 30%. 2 oz. net wt. **213-921** reg. \$9.49 **\$7.99**

fast itch relief

Anti Itch Cream with Healing Aloe
For skin irritation from eczema, psoriasis and poison ivy. Suitable for sensitive skin. Active ingredient: Hydrocortisone, .5%. 2 oz. net wt. **213-989** reg. \$9.99 **\$8.39**

Deodorizing Spray

Can also be used in footwear. 3.5 oz. net wt. **313-236** reg. \$9 **\$6.99**



Lavender Softening Balm

1.7 oz. net wt. **312-560** reg. \$6 **\$4.79**



Arthritis Achy Foot and Muscle Cream

2.5 fl. oz. **314-194** reg. \$7 **\$5.29**



Antifungal Spray for Athlete's Foot

3.4 fl. oz. **309-825** reg. \$9 **\$6.39**



Maximum Strength Cracked Heel Cream

2.5 fl. oz. **310-404** reg. \$7 **\$5.29**



Intensive Callus Cream

3.4 fl. oz. **312-612** reg. \$9 **\$5.99**



Deep Moisturizing Cream

2.5 fl. oz. **308-962** reg. \$6 **\$4.49**



Intensive Moisture Foot Cream

Suitable for diabetics. 2.5 fl. oz. **302-012** reg. \$6 **\$4.49**



Overnight Renewing Cream

3.4 fl. oz. **295-205** reg. \$9 **\$5.99**



Pedicure Tool

4-in-1 tool! Plastic. 3 1/8" L x 1 3/4" W x 1 1/2" H. Includes: fine-grain file, metal file, pumice, brush. **592-712** reg. \$11 **\$7.99**



Pedicure Kit

Case, 3 1/2" L x 4 3/4" W. Metal, man-made materials. Includes: nail clipper, toenail clipper, nail file, scissors, cuticle pusher. **121-029** reg. \$11 **\$7.99**



REACH & LISTERINE® FLOSS always remember to floss!

**Reach®
Unflavored
Waxed Floss**
Accepted by the
American Dental
Association.
55 yards.
505-238
reg. \$3
\$1.99



Reach® Mint Waxed Floss
The #1 selling floss from Reach.
Refreshing mint flavor.
Accepted by the
American Dental
Association.
55 yards.
504-652
reg. \$3
\$1.99



**LISTERINE®
Cool Mint™ Floss**
*Removes up to
61% more plaque
than GLIDE® Mint
Floss.* Waxed
coating is shred-
resistant. Mint
flavor for the
feeling of clean,
fresh breath.
55 yards.
505-261 reg. \$5
\$3.99



LISTERINE® Ultraclean® Mint Floss
*Removes 2X more plaque than
GLIDE® Mint Floss.*
With patented MICRO
GROOVES®
technology for
greater plaque
removal and
superior
cleaning.
30 yards.
505-223
reg. \$5
\$3.99



**LISTERINE® Ultraclean®
Access® Flosser**
*Long ergonomic handle with
nonslip grip.* Unflavored floss heads.
505-314 reg. \$6
\$4.79 includes 8 floss heads

**LISTERINE® Ultraclean® Access®
Mint Flosser Refill**
Disposable mint-flavored floss
heads. For use with the **LISTERINE®
Ultraclean® Access® Flosser.**
510-085 reg. \$7
\$5.64 pack of 28

**LISTERINE®
Ultraclean® Access®
Unflavored Flosser
Refill**
Disposable unflavored
floss heads. For use
with the **LISTERINE®
Ultraclean®
Access® Flosser.**
521-969 reg. \$7
\$5.64 pack of 28



EUTHYMOL

Loved for over 122 years for
its distinctly strong flavor and
British heritage, this classic
oral care brand, which dates
back to 1898, is formulated
to help keep teeth and
gums healthy with a blend
of anti-plaque and specially
refreshing ingredients.
Feel the difference!



Euthymol Toothpaste
Fluoride-free. Strong,
unique flavor. With
ingredients to keep
breath fresh and
help remove plaque.
Recyclable aluminum
vintage tube.
3.7 oz. net wt.
295-406
reg. \$10
\$6.99

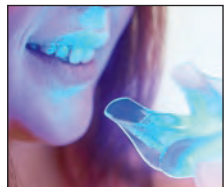
Enjoy these special prices and
exclusive offers only when you
shop with an Avon Representative.

**Euthymol Toothbrush
Regular**
Small head with soft bristles
reach the back teeth and are
curved to hug gumline for deep
and full cleaning. 301-150 reg. \$6
\$3.99

**Euthymol Toothbrush
Classic**
Larger head, with soft bristles,
covers five teeth at a time for
fast and efficient cleaning.
Curved to hug gumline. 301-092
reg. \$6
\$3.99

NEW
Euthymol Mouthwash
Pink jelly formula for long-
lasting freshness. 6.7 fl. oz.
301-183 reg. \$13
\$9.99

NEW
Pocket-size mouth spray that
keeps breath minty fresh,
anytime, anywhere. .33 fl. oz
302-084 reg. \$11
\$7.99



Instant Whitening LED Light System

Use hydrogen peroxide gel with LED light for 10 minutes. Requires two lithium batteries (included). Refill syringe can be purchased separately. Gel, .17 fl. oz. **469-315** reg. \$54 **\$44.99** the kit



ATTACH LED DEVICE to silicone mouth tray.



APPLY GEL with syringe.



BITE DOWN ON TRAY Turn on light. Leave in for 10 minutes.

Perioe Thera-White 2-in-1 Whitening Toothpaste

INNOVATIVE DUAL SYSTEM! Booster activates toothpaste to remove stains and whiten teeth faster and more effectively than with either alone. Fluoride-free. 4.9 fl. oz. **reg. \$30** **\$26.50** each



Charcoal Cool Mint. With activated charcoal. **469-406**

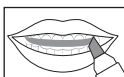


Pink Mild Mint. **459-523**



Thera-White Whitening Gel

Use 1-2X a day. Can also be used as a refill with LED system. Gel, .17 fl. oz. **616-718** reg. \$24 **\$19.99**



APPLY GEL with syringe. **LET DRY** for 1-2 minutes. **Do not drink or eat** for an hour. **REMOVE RESIDUE.** Brush or rinse.

ONE-STEP WHITENING STRIP

The gel is already on the strip, no syringe needed.

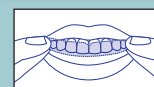
with hydrogen peroxide



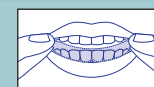
SIMULATED



Peel the strip from the backing liner.



Apply the strip to cover teeth to be whitened. Align the dented edge with gumline.



Do the same with lower teeth. Leave on for 30 minutes and peel off.

Perioe Thera-White Dental Whitening Strips

Whitens in just 30 minutes. In 12 days, see whiter teeth for six months. Clear gel strip with hydrogen peroxide adheres to teeth and peels off easily. No-slip grip. Apple Mint flavor. **954-719** reg. \$24

\$19.99
BOX OF 20 STRIPS

A BRIGHTER SMILE ON THE GO

With hydrogen peroxide, instantly removes stains from food, coffee, wine and lipstick.



Perioe Thera-White Teeth Whitening Pen

Clear gel with hydrogen peroxide and an easy-to-use silicone tip. .13 fl. oz. **908-225** reg. \$26 **\$19.99**



Periee Royal Black Bee Honey Mint Toothpaste
Fluoride-free. With royal jelly and Australian propolis extract. Helps fight plaque and whiten teeth. Honey Mint flavor. 3.5 oz. net wt. **777-591 reg. \$6 \$5**



Periee Himalaya Pink Salt Toothpaste Pump Ice Mint
Creamy paste in easy-to-use pump. Over 2.9X as much toothpaste as tube. Fluoride-free. 10 oz. net wt. **883-883 reg. \$12 \$10**

Periee Himalaya Pink Salt Toothpaste Tube Ice Mint
Pink gel paste with aloe vera essence beads. Fluoride-free. 3.4 oz. net wt. **883-276 reg. \$6 \$5**

Periee Himalaya Pink Salt Toothbrush Soft
Microfibers with natural Himalayan pink salt help keep teeth clean. Soft bristles. **888-024 reg. \$5 \$4.29**



Whitening Essentials Toothbrush

Medium Blanc Charcoal
Uniquely shaped brush. With medium bristles, infused with activated charcoal to help your teeth look clean and bright. **474-162 reg. \$6 \$4.80**



Whitening Essentials Toothpaste
With fluoride to help prevent cavities. Each, 5.5 oz. net wt.

Periee Black Charcoal Clean Mint
With 10X more activated charcoal (compared to Blanc Charcoal) to help remove stains and brighten teeth. **820-622 reg. \$10 \$8.99**

Blanc Charcoal Fresh Mint
With activated charcoal to help remove stains and brighten teeth. **480-460 reg. \$9 \$7.99**

Original Cool Mint
With highly effective whitening agents to keep your smile bright. **478-259 reg. \$9 \$7.99**



FREE
Two try-it samples of Periee Thera-White Dental Whitening Strips* with any Whitening Essentials Toothpaste



*Full box of 20 Whitening Strips sold on page 203.

introducing
Elastine SALON de Color

100% gray coverage and rich, long-lasting color...without ammonia, parabens, mineral oil, or benzophenone. For your most luxurious locks and healthy-looking hair.
No appointment necessary.

Start with pre-color treatment.
Follow with color in two steps.
Finish with conditioning mask.



radiant **BLACKS**



2 / Soft Black 038-553



NEW
Elastine Salon de Color BLACK
Make an impact for a dramatic look. reg. \$9.99
\$7.99

ravishing **REDS**



NEW
Elastine Salon de Color REDS & AUBURNS
Refresh, brighten or deepen color.
reg. \$9.99
\$7.99

4R / Dark Mahogany Red 039-750



6R / Light Auburn 044-608



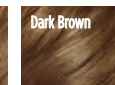
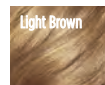
Enjoy these special prices and exclusive offers only when you shop with an Avon Representative.

rich **BROWNS**

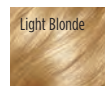


NEW
Elastine Salon de Color BROWNS
If your Brown color looks faded, make it vibrant!
reg. \$9.99
\$7.99

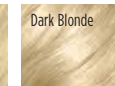
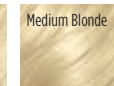
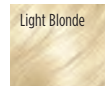
7BL / Natural Dark Blonde 047-827



8BL / Medium Golden Blonde 057-475

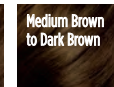
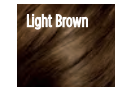


10BL / Extra Light Natural Blonde 058-620

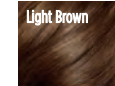


NEW
Elastine Salon de Color BLOWN
Lighten dark roots or completely color to tips. reg. \$9.99
\$7.99

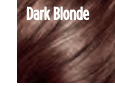
4 / Dark Brown 038-568



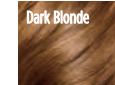
4B / Dark Chocolate Brown 039-727



5B / Medium Maple Brown 041-723



5CB / Medium Chestnut Brown 040-110



beautiful **BLOWN**



ELASTINE PROPOLITHERA STYLING BOOSTERS

Serum Treatment

Upon contact with water, nutrient-rich liquid visibly transforms into a creamy formula, 7.8 fl. oz.

359-821
reg. \$22
\$18



Aloe Dual-Active Hair Serum

Intense hydration with vitamins, minerals and other nutrients to bring damaged or chemically processed hair back to life. 3.4 fl. oz. **102-585**

reg. \$30
\$25



Curl Cream

Rich hydration for bouncy, defined curls. Reduces frizz for a smooth, healthy-looking shine. 5 fl. oz. **102-475**

reg. \$19
\$15



Volume Mousse

Lightweight formula helps add lift, bounce and body, enhances elasticity and minimizes breakage for a flexible hold with natural-looking, long-lasting style and shine.

Protects against heat, so it's perfect for blow-drying. 5 fl. oz.

847-550
reg. \$19
\$15



Volume Spray

Adds weightless volume and lustrous texture to thinning hair. 6.7 fl. oz. **103-840**

reg. \$19
\$15



Leave-In Conditioner

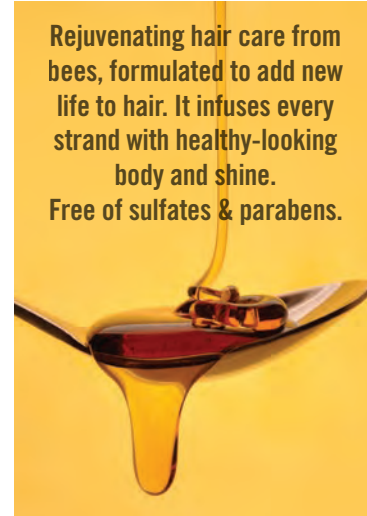
Hydrates and nourishes dry hair, infusing it with rich lustre. 8.1 fl. oz. **102-570**

reg. \$19
\$15



ELASTINE PROPOLITHERA bcc goodness for healthy-looking hair

Rejuvenating hair care from bees, formulated to add new life to hair. It infuses every strand with healthy-looking body and shine. Free of sulfates & parabens.



HAIR CARE

Volumizing

Adds weightless volume and enhances texture to make hair look fuller, thicker and stronger. Each, 16.9 fl. oz.

A. Shampoo 892-607
B. Conditioner 892-870

Damage Repair

Helps repair and soften damaged hair so it appears smooth and manageable. Each, 16.9 fl. oz.

C. Shampoo 893-713
D. Conditioner 893-728

E. Hair Oil Serum

Helps to strengthen, protect, moisturize and smooth hair, and to add shine, while styling. 5.7 fl. oz.

895-190

F. Hair Mask

Enriched with nutrients to help deeply nourish hair and mend damaged split ends. 10.1 fl. oz. **895-185**

reg. \$18 each
\$15.79 each



DRY SHAMPOO & ROOT TOUCH-UP

Our no-rinse, leave-in shampoo does all this instantly.

Elastine Restore & Detox Dry Shampoo

No water needed. Leaves hair cleansed and freshly scented without rinsing. Detoxifies with charcoal extract and soothing white tea powder, absorbs oil, sweat and odor. No talc powder or starch. No residue. Enhances color—3 shade matching formulas. One is clear, great for blondes. Leaves hair looking refreshed and restored with added volume. Each, 5 oz. net wt. reg. \$19

\$16 each



Incredible Invisible
956-286



Fearless Brunette
956-821



Enigmatic Dark
956-396

Cover gray in seconds and extend time between salon visits.

Root Touch-Up

An instant way to cover up your roots. With scalp-nourishing Ha-Soo-Oh herb, black bean and ginseng. Built-in mirror. Travel-ready. Each, .25 oz. net wt. reg. \$18

\$15.79

SIMULATION



before touch-up after touch-up



Dark Brown
245-213



Light Brown
244-642



Reddish Brown
243-627



Black
245-251

Package labels may vary.

REACH POP-UP LIP BALM

LIP BALM THAT'S ALWAYS ON CALL

NEW

REACH Pop-Up Lip Balm

Tagging along with your phone, your lip balm is always within reach, ready to make your lips soft and sweet, for a pucker-ready pose anytime, anywhere. Affixes to back of phone securely and won't open unexpectedly or when in bottom of bag. Glides on clear and easily. Each, .06 oz. net wt. reg. \$17.99

\$14.99



Combines convenient and trendy PopGrip design with moisturizing lip balm.



Strawberry
126-217



Vanilla
126-370



CHI® ESSENTIALS have a great hair day, every day

A. CHI® Essentials Replenishing Shampoo
Gentle daily shampoo with essential vitamins, minerals and amino acids. No sulfates or parabens—so it won't strip hair of natural oils. Safe for color-treated hair. 12 fl. oz. **589-140** reg. \$18 **\$15.99**

B. CHI® Essentials Moisturizing Conditioner
Lightweight daily conditioner. Infused with aloe to lock in rich moisture. With vitamins A and B to help strengthen hair from root to ends, increase elasticity and help smooth split ends and frizz. 12 fl. oz. **589-409** reg. \$18 **\$15.99**

C. CHI® Essentials Repairing Serum
Deeply penetrating-yet-lightweight serum helps strengthen, protect, moisturize and smooth. With vitamin A to help seal split ends, and rosemary to help boost volume and shine. 6 fl. oz. **589-413** reg. \$31 **\$26.50**

D. CHI® Essentials Thermal Protecting Spray
Helps protect hair from the damaging heat from styling tools. Silk molecules help lock in moisture and strengthen cuticles for frizz-free, shiny hair. 6 fl. oz. **589-432** reg. \$27 **\$23.50**



CHI® PRO STYLERS & TOOLS for salon-quality results

CHI® ENVIRO 54® Natural Hold Hair Spray
For brushable hold. Lightweight. Fast-drying. No build-up. Anti-humidity. Thermal protectant for blow drying. With silk to help build hair's strength and resilience, and natural botanicals to add volume and enhance shine. Paraben-free. 10 oz. net wt. **908-450** reg. \$26.50 **\$21.50**



CHI® Styling Cream Gel
Workable styling cream gel to create sleek styles or enhance natural curls. Light-hold, non-flaking formula that adds incredible shine and control to any style. Enriched with silk to help strengthen hair. 6 fl. oz. **908-479** reg. \$20.50 **\$16.80**



BioSilk® Silk Therapy®
Replenishes and reconstructs to help repair and protect all hair types. Tames frizz and flyaways and leaves hair silky smooth with reflective shine. Helps shield hair from UV rays, heat and humidity. 5.64 fl. oz. **011-349** reg. \$34 **\$28**



CHI® 1" Volcanic Lava Ceramic Pro Spin 'n' Curl
Preset temperature controls with adjustable timers and LED screen display, for any hair type. 12" L. Dual voltage for travel. 11 ft. swivel cord. Use only as directed. **471-527** reg. \$199 **\$179**



CHI® Advanced Ionic Compact Hair Dryer
Powerful 1875-watt ion generator emits negative ions to reduce drying time. Lightweight, compact design. Rapid Clean Technology with Blue LED light for cleaner air during styling. Adjustable heat and air-speed settings. Removable filter. 6½ ft. cord. Use only as directed. **471-474** reg. \$150 **\$135**



HAIR CARE



HEMP FOR HAIR
Shampoo and conditioner with cold-extracted hemp seed oil. Contains Omega 3-6-9, known to help moisturize and nourish hair, prevent breakage and deliver full volume.

Elastine HempharmX
Weightless hydration. Vegan formulas. Both silicone-free. Shampoo is sulfate-free.

Shampoo
3.5 fl. oz.
359-836

Conditioner
3.5 fl. oz.
360-544
reg. \$24
\$20 each

Advance Techniques Daily Shine 2-in-1 Shampoo & Conditioner
Formulated to bring out radiant shine for a sleek, long-lasting finish.
11.8 fl. oz. **883-185**
reg. \$9
\$5.79



Advance Techniques Daily Shine Dry Ends Serum
Helps mend and nourish split ends instantly. Contains UV absorbers to protect against the damaging effects of the sun.
2 fl. oz. **883-261**
reg. \$11
\$7.49



Advance Techniques 360 Nourish with Moroccan Argan Oil Leave-In Treatment
With nourishing vitamins B and E, moisturizes dry, damaged hair, and infuses it with instant shine, irresistible softness, smooth silkiness, and weightless movement.
2 fl. oz.
718-867
reg. \$16
\$10.49



- Formulated to help restore your scalp's invisible microbiome shield of healthy flora.
- Contains prebiotics and para-probiotics, and natural plant-based ingredients to help soothe redness and itching.
- With biotin to help thicken hair.
- No sulfates, parabens or silicones.



Dr. Groot Microbiome Scalp Fortifying Exfoliating Shampoo
With rosemary extract, gently exfoliates, helping to remove dirt and impurities.
8.4 fl. oz. **782-176**
reg. \$35
\$29



Dr. Groot Microbiome Scalp Fortifying Hair-Thickening Shampoo
With coconut oil, deep cleanses while it helps moisturize dry scalp and hair.
13.5 fl. oz. **778-014** reg. \$35
\$29



Dr. Groot Microbiome Scalp Fortifying Massaging Tonic
With sophora root, an herb known to help support health of scalp circulation and hair growth. Massage it in to help hair follicles absorb essential nutrients.
5 fl. oz.
782-802
reg. \$47
\$39



Dr. Groot Microbiome Scalp Fortifying Serum Treatment
Upon contact with water, concentrated liquid transforms into a creamy formula that moisturizes and helps support healthy hair roots and growth.
6.7 fl. oz.
782-271 reg. \$35
\$29



BUG GUARD PLUS IR3535® EXPEDITION™

ALL-IN-ONE PROTECTION
FROM SUN & BUGS

REPELS DEER TICKS THAT MAY
CARRY & TRANSMIT LYME DISEASE

- DEET-FREE / PABA-FREE
- NO NEED TO WASH OFF
- WATER-RESISTANT
- SPF 28 & SPF 30
- WITH VITAMIN E
- PROTECTS AGAINST mosquitoes, deer ticks, gnats, no-see-ums, sand flies and biting midges

A. Aerosol Spray SPF 28

Repels mosquitoes for 8 hours, deer ticks for 12 hours. 4 oz. net wt.
521-370 reg. \$20

\$13.29

B. Pump Spray SPF 30

Repels mosquitoes for 8 hours, deer ticks for 10 hours. 4 fl. oz. 255-278 reg. \$15

\$8.99

C. Family Size

Pump Spray SPF 30

8 fl. oz. 255-259 reg. \$24

\$16.39

D. Travel Size

Pump Spray SPF 30

2 fl. oz. 943-533 reg. \$11

\$7.99



BUG GUARD PLUS IR3535® LOTION

WATER RESISTANT PLUS SPF 30

REPELS MOSQUITOES THAT MAY
CARRY & TRANSMIT THE ZIKA VIRUS

- DEET-FREE / PABA-FREE
- NO NEED TO WASH OFF
- WATER-RESISTANT
- SPF 30
- WITH ALOE & VITAMIN E
- DERMATOLOGIST-TESTED

Gentle Breeze®

SPF 30 Lotion

4 fl. oz. 925-819

reg. \$15

\$8.99



Enjoy these special prices
and exclusive offers only
when you shop with an
Avon Representative.

BUG GUARD PLUS PICARIDIN

FOR DAWN AND DUSK WHEN
BUGS ARE MOST ACTIVE

REPELS DEER TICKS THAT MAY
CARRY & TRANSMIT LYME DISEASE

- DEET-FREE / PABA-FREE
- WITH VITAMIN E & ALOE*
- PROTECTS AGAINST mosquitoes, deer ticks, gnats, no-see-ums, sand flies, biting midges and black flies

E. Aerosol Spray*

Repels mosquitoes for 6 hours, deer ticks for 7 hours. 4 oz. net wt.

315-243 reg. \$20

\$13.29

F. Pump Spray

Repels mosquitoes for 8 hours, deer ticks for 12 hours. 4 fl. oz. 255-373 reg. \$15

\$8.99

G. Travel Size Pump Spray

2 fl. oz. 009-600 reg. \$11

\$7.99

H. Family Size Pump Spray

8 fl. oz. 255-187 reg. \$24

\$16.39

J. Towelettes

Repels mosquitoes for 8 hours, deer ticks for 12 hours. Resealable bag holds 8 packets. Each towelette, 9" L x 5 1/2" W. Each, .3 fl. oz.

269-562 reg. \$16

\$10.49 PACK OF 8

*Picaridin Aerosol Spray does not contain aloe.
Read and follow label directions and precautions.

Anti-Itch
Spray†

Provides temporary
itch relief from
insect bites.
2 fl. oz.
529-481
reg. \$11

\$7.29

†Does not repel insects



LIP CARE

VEILMENT CARE LIP BALM

Infused with naturally moisturizing jojoba oil and shea butter to keep lips soft and supple all day. Delicately scented and tinted.

Aloe (with aloe extract; grape-flavored) **141-038**

Coconut (with coconut oil) **140-983**

Cherry **956-840**

Strawberry **956-984**

Each, .14 oz. net wt. reg. \$2

\$1.39 each



Dew Kiss Lip Dew 208-012



MOISTURE THERAPY LIP BALM

Intensive Healing & Repair
Moisturizing Lip Treatment Balm

207-949

Daily Defense **777-936**

Calming Relief **777-682**



FLAVOR SAVERS LIP BALM

Strawberry **208-209**

Vanilla **209-501**

Melon **209-334**

Each, .14 oz. net wt. reg. \$2

\$1.39 each



HAND CREAM

AVON CARE Silicone Glove Protective Hand Cream

Lasting protection from dryness.

3.4 fl. oz. **048-660**

reg. \$6

\$2.69



MOISTURE THERAPY Intensive Healing & Repair Hand Cream

786-296
Daily Skin Defense Hand Cream **786-224**

Calming Relief Hand Cream **786-349**

Each, 4.2 fl. oz. reg. \$6

\$2.69 each



SKIN SO SOFT Original Replenishing Hand Cream

941-268
Soft & Sensual Replenishing Hand Cream **867-315**

Radiant Moisture Replenishing Hand Cream **941-272**

Each, 3.4 fl. oz. reg. \$5

\$2.69 each



DAILY ESSENTIALS

From *head-to-toe favorites* to laundry essentials, these are your *everyday go-to's* that you just can't live without.



With chia seed extract.

Oil-Balancing Cream

Refreshing gel-cream eliminates excess shine and minimizes the appearance of pores. 1.7 fl. oz. **906-753**

reg. \$13
\$6.99



With sunflower seed extract.

Anti-Aging Cream

Moisturizing formula works to visibly smooth the appearance of fine lines and wrinkles. 1.7 fl. oz. **906-681**

reg. \$13
\$6.99



**Bonus-Size
Dramatic Firming Cream**

2.5 fl. oz. **906-768**

reg. \$15
\$7.99

NOW
50%
MORE
smoothing and
firming cream!

Got a skin
CONCERN?
we've got a
SOLUTION!

Skin looks and feels smoother.

Dramatic Firming Cream

1.7 fl. oz. **463-393**

reg. \$10
\$5.49



Visibly improves skin tone.

**Banishing Cream
Skin Discoloration Improver**

2.5 fl. oz. **463-374**

reg. \$10
\$5.49



Adds rich moisture to dry skin.

Nurtura Replenishing Cream

1.7 fl. oz. **161-070**

reg. \$10
\$5.49



VEILMENT CARE BAR SOAPS

Delicately scented, plant-based cleansers moisturize skin, leaving it beautifully soft and lightly fragranced.

NEW

Veilment Care Soothing & Relaxing Bar Soap

Light, fresh botanical and floral scent. Enriched with comforting lavender oil extract to help calm and soothe. Free from parabens and phthalates.

Each, 4.9 oz. net wt. **059-937 reg. \$8 \$6.49 pack of 3**

Veilment Care Moisturizing Bar Soap

Derived from olive oil and infused with coconut oil. 2.8 oz. net wt.

609-360 reg. \$2.50 \$1.99



Perioe White Action Toothpaste

Fluoride-free formula with baking soda effectively cleanses and whitens teeth, and naturally refreshes breath. Each, 5.6 oz. net wt.

Strong Mint **609-667**
Original Mint **609-375**
reg. \$4
\$2.99 each



Perioe White Action Toothbrush

Effectively removes plaque and surface stains. Easy-grip rubber pads. Round-edge bristles for a gentle clean and a healthy mouth. Medium bristles.

Green **828-370**
Blue **609-671**
reg. \$1.29
\$.99 each



ELASTINE BOTANICALS with Eco Botanic Essence™

ELASTINE BOTANICALS

Infused with revitalizing babassu seed oil, chamomile flower water and lemon chestnut extract, and pH balanced, like healthy hair, it helps bring damaged hair back to life, adding dewy moisture for a smooth, natural-looking sheen.

NO • PARABENS • SILICONE • MINERAL OIL
• TRICLOCARBAN • TRICLOSAN

WANT VOLUME?

Rosemary & Sea Salt

With rosemary to help promote thicker hair and scalp health, and sea salt to add body.

Volumizing Shampoo 278-491

Conditioner 278-544

6.7 fl. oz.
reg. \$4.50
\$3.79 each



DRY HAIR?

Cherry Blossom & Hyaluronic Acid

Moisturize dry, damaged hair with our hyaluronic acid-infused formula as thirsty strands drink it up.

Moisturizing Shampoo 278-472

Conditioner 278-487

6.7 fl. oz.
reg. \$4.50
\$3.79 each



FRIZZY HAIR?

Avocado & Quinoa

With nourishing avocado oil and quinoa seed extract to help protect hair from damage and prevent breakage.

Anti-Frizz Shampoo 278-578

Conditioner 278-620

6.7 fl. oz.
reg. \$4.50
\$3.79 each



TOUGH ON GREASE



Vegan™

4-piece value pack!

❖ **Morning Aura Dish Soap**
Cuts grease, removes old grime and stains for ultraclean dishes. Each, 65.9 fl. oz. **332-822** reg. \$49.99 **\$39.99** the pack of 4

NEVER LOSE POWER

❖ **Bexel® Batteries**
Alkaline. AA 714-015 AAA 657-732 reg. \$16.99 **\$12.99** each pack of 20



WASH MORE, FOR LESS



smaller bottle, same cleaning power for 63 loads!**

3-piece value pack!

❖ **Fresh Fiji 4X Super Concentrated Liquid Laundry Detergent**
Stain-removing enzyme blend and 4X concentrated* cleaning power for whiter and brighter clothes and prevents future stains. 63 loads. 33.8 fl. oz. **168-481** reg. \$16.99 **\$12.99**

*Per drop vs. Fresh Fiji standard liquid laundry detergent. **Based on regular loads for standard machine.

❖ **Fresh Fiji Color Booster & Stain Remover**
Eliminates stains and odors, whitens whites and brightens colors. With peroxide and color-safe bleach. Each, 74.3 fl. oz. **835-602** reg. \$58.99 **\$44.99** the pack of 3



THE WOW DEAL

\$191 VALUE

The All-in-One Day-to-Night Routine

Keep skin looking gorgeous 24/7! Start fresh with your cleanser, give your face and eyes a lift and add SPF protection. Stay moisturized at night (after cleansing before bed!) with supreme beauty sleep in a jar.

Isa Knox Anew Clinical Collagen Booster Eye Lift Pro Dual Eye System

In just one week, eye area looks lifted, firmer and tighter. Gel, .33 fl. oz. Cream, .33 fl. oz.

\$40 value
Sold separately on page 89.

Isa Knox LXNEW Clean Nourishing Cream Cleanser

Gently removes impurities and makeup while restoring moisture. 5 fl. oz.

\$12 value
Sold separately on page 83.

Anew Clinical Infinite Lift Targeted Contouring Serum

With skin-tightening peptides. 1 fl. oz.

\$45 value
Not sold separately in this brochure.

Anew Hydra Fusion Daily Beauty Defense Broad Spectrum Sunscreen Lotion SPF 50

Featherlight feel. Use after moisturizing. 1.7 fl. oz.

\$34 value
Sold separately on page 81.

Anew Ultimate Supreme Advanced Performance Crème

With Black Pearl Extract. See a dramatic difference in deep wrinkles and skin radiance. 1.7 oz. net wt.

\$60 value
Sold separately on page 74.

ALL 5 FOR \$50
472-413



Enjoy these special prices and exclusive offers only when you shop with an Avon Representative.