

2021-2022

BEEF **IN** FOCUS™

SIRE DIRECTORY



PROFIT. IT'S IN THE GENES.

Meet The Genus ABS Beef Team...



MARK SMITH
EMEAR Beef Director
07971 118980
Mark.Smith@genusplc.com



JESS SIMMS
EMEAR Beef Brand Manager
07866 01000
jess.simms@genusplc.com



ARWEL OWEN
UK Beef Sales Development Manager
07911 18547
arwel.owen@genusplc.com



DAN HAYWARD
Beef Cornerstone™ Manager
07971 839754
dan.hayward@genusplc.com



NEIL WHARTON
EMEAR Beef Key Account
Manager
07971 119014
neil.wharton@genusplc.com



GEORGE WILLIAMSON
EMEAR Beef Key Account
Manager
07929 759966
George.williamson@genusplc.com



GEMMA WARK
Beef Supply Chain Development
Manager
07814 184909
gemma.wark@genusplc.com



RHYS ROBERTS
Beef Genetics Programme Technician
07989 220597
rhys.roberts@genusplc.com

WELCOME

to the Genus ABS

BEEF INFOCUS™ DIRECTORY



Genus ABS Beef InFocus™, powered by NuEra Genetics™, delivers proven and reliable beef genetics for the dairy producer to maximise calf crop value while driving beef supply chain efficiency.

What sets Genus ABS Beef InFocus apart from other beef on dairy programmes?

Not every beef on dairy calf has the same genetic value. Each Genus ABS Beef InFocus sire delivers:

- Tailored beef genetics for dairy farms
- Proven and reliable performance on dairy cows
- Highly marketable calves
- Real world data driven results

CONTENTS

CONTENTS	PAGE NO.	CONTENTS	PAGE NO.
BEEF CORNERSTONE™	4	MAGNUM	25
PROFIT. IT'S IN THE GENES.	6	MILESTONE	26
ANGUS	8	LUDDITE	26
FLETCHER	8	LOGIC	27
ESPRESSO	8	MERCURY	27
ELITE	9	MINOTAUR	28
29XB0072	9	HEREFORD	28
BLACK BROOK	10	PROTEUS	28
DARCY	10	NORRIS	29
WAR SMITH	11	ROSCOE	29
JACKDAW	11	LIMOUSIN	30
TITUS	12	ONSLow	29
ANGUS INTEGRATED OPPORTUNITY	12	LENNOX	30
NUERA PROFIT	13	LONGHORN	31
BRITISH BLUE	14	SAINFOIN	31
KOJAK	14	SIMMENTAL	31
NORTHPOLE	14	EXCLUSIVE	31
NACHO	15	IBRAHAM	32
NIGHTRIDER	15	WAGYU	32
MONTY	16	PRELUDE	32
MONEYMAN	16	OVERTURE	33
KUDOS	17	UNDER SURVEY	33
NUMBER ONE	17	NAPOLEON	33
MAJOR	18	SEXCEL & BEEF INFOCUS	34
MECHANIC	18	UNDER SURVEY	36
LANCER	19	SPIKE	36
KOWTOW	19	RANCHER	36
MAXWELL	20	PAVAROTTI	37
LEMMY	20	NATION	37
NANDO	21	ANTICIPATED	38
LYNX	21	LONGFORD	38
NUERA PROFIT	22	SHOUT ABOUT THE SIRE	39
LAMBORGHINI	24	TRAIT LEADERS	40
LUCKY JIMBOB	24	FERTILITY PLUS	42
JUPITER	25	SEXCEL	43
		BULL SEARCH	44

SPECIALIST SYMBOLS



Sire is not eligible for pedigree use, commercial use only.



Sire is proven on over 120 calving's in over 60 dairy herds.



Sire is eligible for pedigree use with progeny being able to be registered subject to a royalty fee.



Sire is classed as a Superior Sire with Meadow Quality Ltd with premium available.



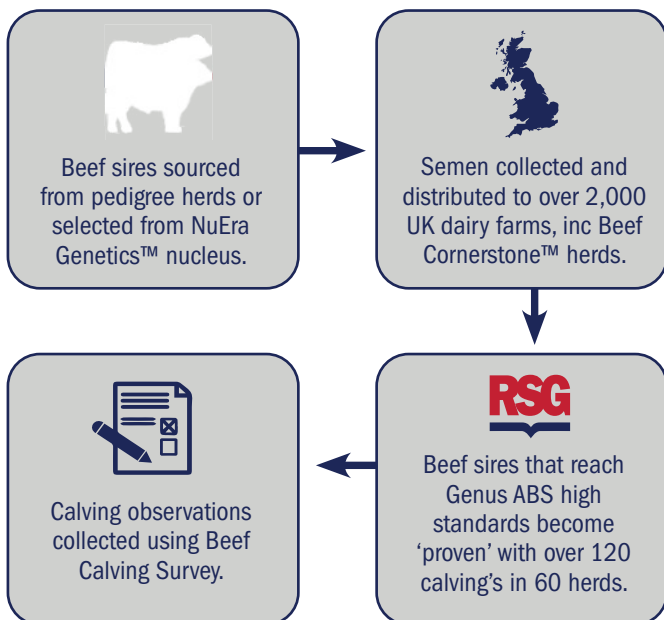
Sire has proven to consistently produce blue roan coloured calves, British Blue specific.

BEEF CORNERSTONE™

How we test our beef sires on dairy cows:

Beef Cornerstone™ facilitates the testing of Genus ABS Beef sires through our Beef Calving Survey which has been in place for over 40 years. We test over 20 young beef sires annually with over 800 customers actively involved.

We collect real world data on our beef bulls to test their performance on dairy cows and ensure we are supplying reliable beef sires to our dairy customers. We pride ourselves on having the worlds best Beef on Dairy testing programme, achieving this by selecting only the best beef sires and rejecting the bulls not reaching our high standards.



Join Beef Cornerstone™ today to reap the following benefits:

Join Beef Cornerstone™ today to reap the following benefits:

- Access to the latest beef sires, including sons of leading Genus ABS proven sires.
- Credit on your Genus ABS account for each completed Beef Calving Survey returned.
 - £10.00 credit for Aberdeen-Angus and British Blue young sires.
 - £7.50 credit for any other beef breed young sires.
- Exclusive offers on newly proven beef sires.
- Receive a free Beef Cornerstone™ jacket on sign up.

Becoming a member is easy, just do one of the following...

- Download a membership form from the Genus ABS website.
- Contact the Cornerstone™ team at GB-Bovine-Cornerstone@genusplc.com
- Speak with your local Genus ABS representative.

What our members say...



"Since signing up to the Beef Cornerstone™ Programme, I have been very happy with the calves we have had from the Beef Cornerstone™ bulls. We finish our beef calves on farm, so it's good to see how the Beef Cornerstone™

sires compared to the proven sires with calving ease and growth rates. It has also given us a chance to get an early heads up on some good bulls which would fit into our system."

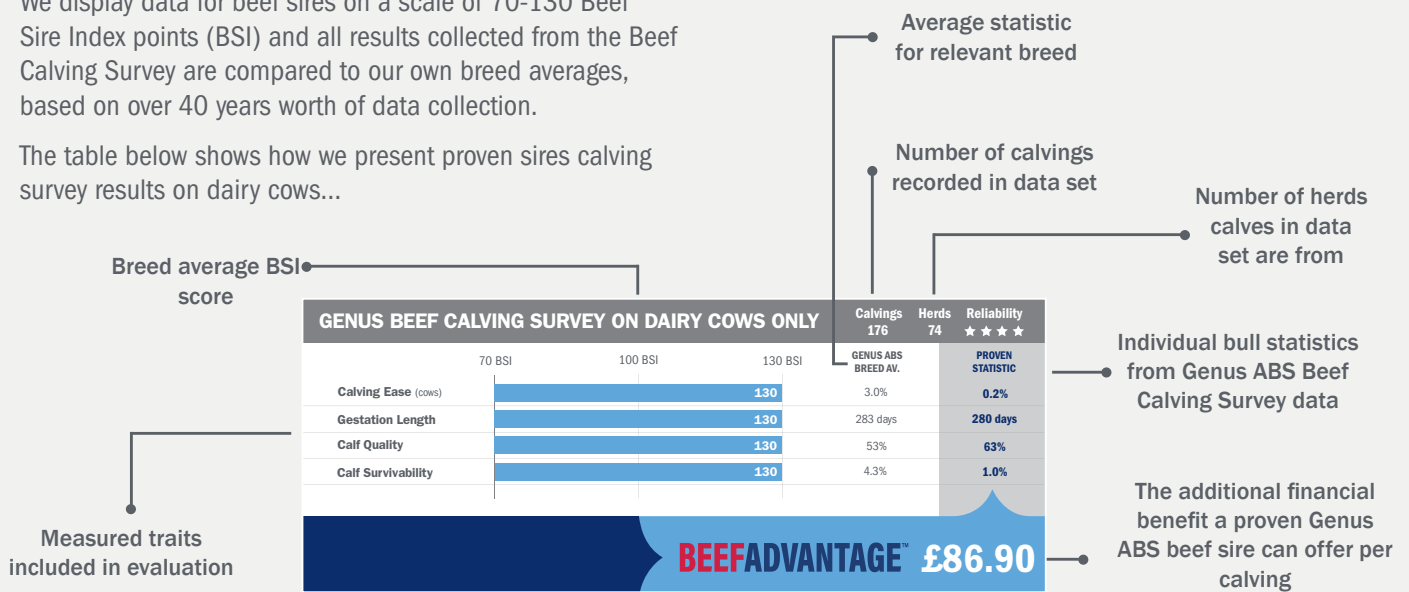
Matthew Sowray, Yorkshire.



Data the Beef Calving Survey provides:

We display data for beef sires on a scale of 70-130 Beef Sire Index points (BSI) and all results collected from the Beef Calving Survey are compared to our own breed averages, based on over 40 years worth of data collection.

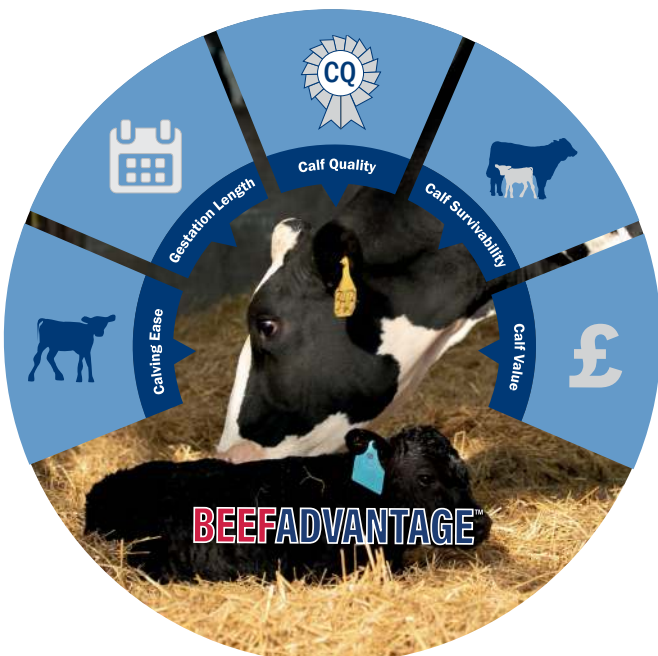
The table below shows how we present proven sires calving survey results on dairy cows...



Sire reliability is of upmost importance when choosing a beef sire suitable for use on your herd. Our star rating system:



BEEFADVANTAGE™



Index for dairy farmers

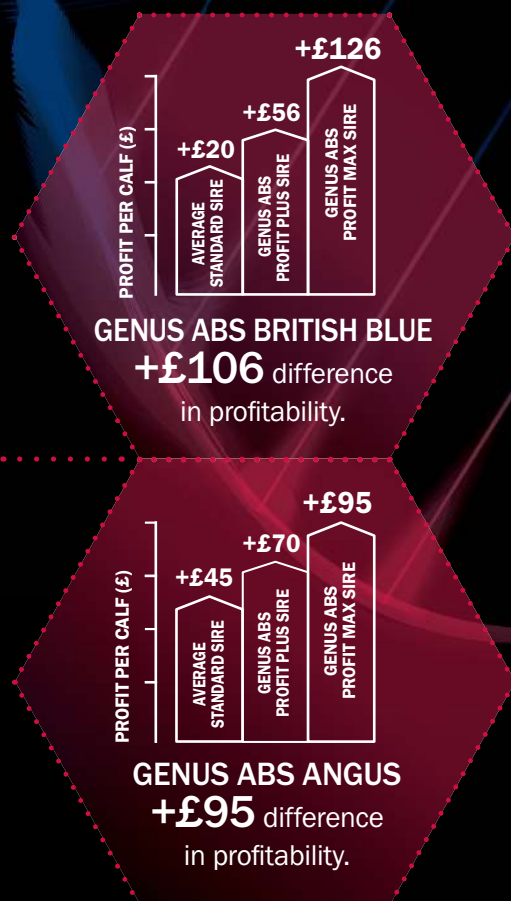
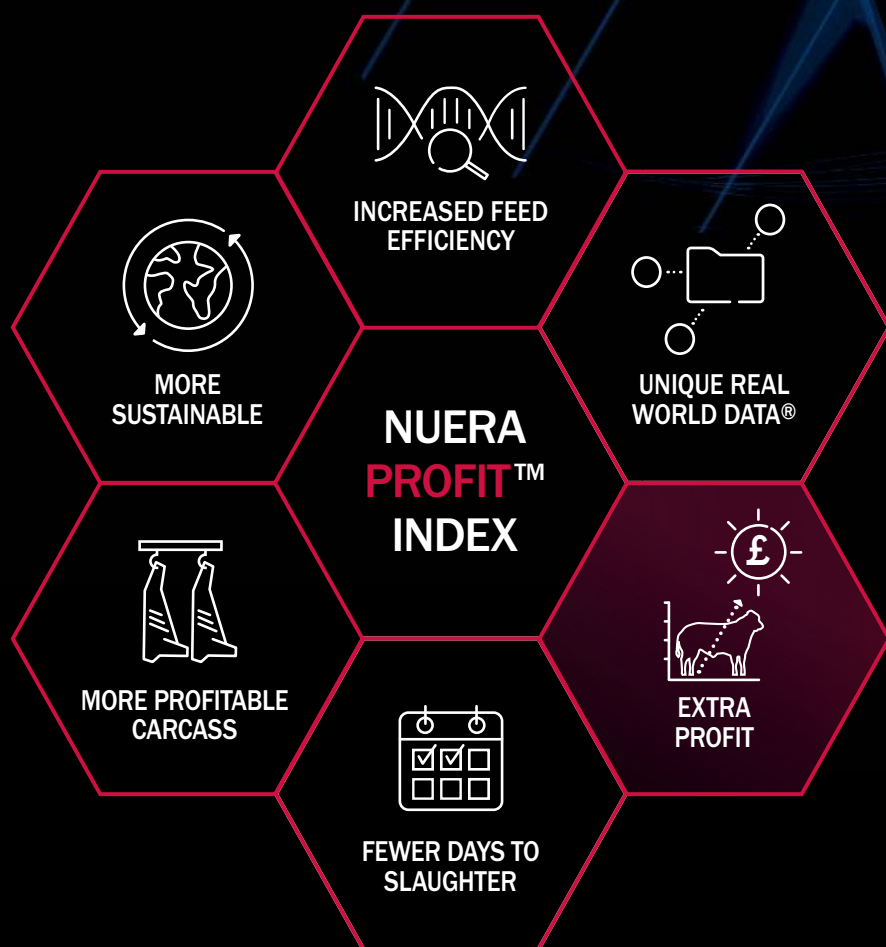
The additional financial benefit a proven Genus ABS beef sire can offer per calving* to a dairy farmer.

How does it work?

The index includes extensive Real-World-Data including over 100,000 Genus ABS Beef Calving Survey data sets from Beef Cornerstone™, industry standard figures and sales prices from external stakeholders. This data provides the essential foundation for our index.

BeefAdvantage™ is available on all our proven sires of the following breeds: Aberdeen-Angus, British Blue, Hereford, Limousin and Simmental.

PROFIT. IT'S IN THE GENES.



NUERA PROFIT™ INDEX

is a unique index which evaluates progeny performance from finishing to slaughter in a beef cross dairy system.

By using ABS® **Real World Data™** collected from many external sources, the index ranks the most profitable genetics within the British Blue and Aberdeen breeds.

It shows the extra profitability **Beef InFocus™** sires deliver compared to the average profit of the same breed. Helping you to maximise the value of your beef calf crop by creating animals that are more efficient and more sustainable for the whole beef supply chain.



NUERA
GENETICS


Genus

ABS

[www.http://bit.ly/NuEraGenetics](http://bit.ly/NuEraGenetics)

FLETCHER



ANGUS



PROGENY OF FLETCHER



HW FLETCHER

Ear Tag: UK 546977 401558 **Genus ABS Code:** AA1583 **NAAB Code:** 29AN2082

Sire: Oakchurch Duster M109 **Dam:** Netherton Fleur M710 **MGS:** S A V Brave 8320 **Royalty:** £42 + VAT

BEEFADVANTAGE™ £86.20

GENUS BEEF CALVING SURVEY ON DAIRY COWS ONLY

	70 BSI	100 BSI	130 BSI	Calvings 252	Herds 83	Reliability ★★★★★
Calving Ease (heifers)			130		4.9%	PROVEN STATISTIC 1.6%
Calving Ease (cows)			128		1.5%	0.4%
Gestation Length		116			282 days	280 days
Calf Quality			130		52%	64%
Calf Survivability			130		3.6%	0.2%

ESPRESSO



ANGUS



PROGENY OF ESPRESSO



ABS ESPRESSO

Ear Tag: UK 712146 600014 **Genus ABS Code:** AA1437 **NAAB Code:** 29XB0042

Sire: Yon Future Focus T219 **Dam:** Wardens Sam 4P8 0386 **MGS:** 4 Point 8 Of Ironwood **Royalty:** Commercial use only

NOT ELIGIBLE FOR PEDIGREE REGISTRATIONS



BEEFADVANTAGE™ £80.00

GENUS BEEF CALVING SURVEY ON DAIRY COWS ONLY

	70 BSI	100 BSI	130 BSI	Calvings 426	Herds 140	Reliability ★★★★★
Calving Ease (heifers)			130		4.9%	PROVEN STATISTIC 1.6%
Calving Ease (cows)		110			1.5%	1.1%
Gestation Length		116			282 days	280 days
Calf Quality			130		52%	66%
Calf Survivability			130		3.6%	2.1%



PROGENY OF ELITE



BOSULLOW

Ear Tag: UK383807 100449 Genus ABS Code: AA1581 NAAB Code: 29AN2081

Sire: Nightingale Eldorado G381 Dam: Bosullow Erica N372 MGS: Bosullow Trannack L298 Royalty: Commercial use only
NOT ELIGIBLE FOR PEDIGREE REGISTRATIONS



BEEFADVANTAGE™ £60.00

GENUS BEEF CALVING SURVEY ON DAIRY COWS ONLY

	70 BSI	100 BSI	130 BSI	Calvings 125	Herds 57	Reliability ★★★
Calving Ease (heifers)			130			PROVEN STATISTIC 0.8%
Calving Ease (cows)			125			0.5%
Gestation Length		100				282 days
Calf Quality			130			61%
Calf Survivability			130			1.8%

29XB0072



ANGUS



PROGENY OF 29XB0072



NuEra T14 0072

Ear Tag: US19605121 Genus ABS Code: AA1702 NAAB Code: 829XB0072

Sire: Basin Payweight 1682 Dam: Cox W34 Waylon 5047 MGS: Baldrige Waylon W3 Royalty: Commercial use only
NOT ELIGIBLE FOR PEDIGREE REGISTRATIONS



BEEFADVANTAGE™ £57.60

GENUS BEEF CALVING SURVEY ON DAIRY COWS ONLY

	70 BSI	100 BSI	130 BSI	Calvings 337	Herds 92	Reliability ★★★★★
Calving Ease (heifers)			130			PROVEN STATISTIC 2.8%
Calving Ease (cows)			128			0.4%
Gestation Length		108				281 days
Calf Quality			128			59%
Calf Survivability			130			2.0%


PROGENY OF WARSMITH

HAYMOUNT WAR SMITH

Ear Tag: UK 561995 401578 **Genus ABS Code:** AA1501 **NAAB Code:** 29AN2027

Sire: Gretnahouse Blacksmith L500 **Dam:** Haymount Wavogera L170 **MGS:** Bardrain Eiger G284 **Royalty:** £42 + VAT

BEEFADVANTAGE™ £38.00

GENUS BEEF CALVING SURVEY ON DAIRY COWS ONLY

	70 BSI	100 BSI	130 BSI	GENUS ABS BREED AV.	PROVEN STATISTIC
Calving Ease (heifers)	96			4.9%	5.2%
Calving Ease (cows)	80		80	1.5%	2.3%
Gestation Length	92			282 days	283 days
Calf Quality			130	52%	63%
Calf Survivability			130	3.6%	1.6%

Calvings
256

Herds
80

Reliability
★★★★★


PROGENY OF JACKDAW

MILLBRAE BLACK JACKDAW

Ear Tag: UK 918195 202725 **Genus ABS Code:** AA1553 **NAAB Code:** 29AN2068

Sire: Liley Edd M021 **Dam:** Millbrae Blackbird P622 **MGS:** Netherallan Peter Pershore E052 **Royalty:** Commercial use only

NOT ELIGIBLE FOR PEDIGREE REGISTRATIONS



BEEFADVANTAGE™ £22.70

GENUS BEEF CALVING SURVEY ON DAIRY COWS ONLY

	70 BSI	100 BSI	130 BSI	GENUS ABS BREED AV.	PROVEN STATISTIC
Calving Ease (heifers)	80			4.9%	6.4%
Calving Ease (cows)	78			1.5%	2.4%
Gestation Length	84			282 days	284 days
Calf Quality			130	52%	65%
Calf Survivability	80			3.6%	5.2%

Calvings
282

Herds
106

Reliability
★★★★★


PROGENY OF TITUS

ABS TITUS
Ear Tag: UK 704149 500854 **Genus ABS Code:** AA1454 **NAAB Code:** 29XB0049

Sire: S A V Bruiser 9164 **Dam:** Wardens Barbara DB 0365 **MGS:** MCC Daybreak **Royalty:** Commercial use only

NOT ELIGIBLE FOR PEDIGREE REGISTRATIONS

BEEFADVANTAGE™ £7.00

GENUS BEEF CALVING SURVEY ON DAIRY COWS ONLY

	70 BSI	100 BSI	130 BSI	Calvings 334	Herds 111	Reliability ★★★★★
Calving Ease (heifers)			130			
Calving Ease (cows)		120				
Gestation Length		108				
Calf Quality	78					
Calf Survivability			130			
				GENUS ABS BREED AV.		PROVEN STATISTIC
				4.9%		2.6%
				1.5%		0.7%
				282 days		281 days
				52%		46%
				3.6%		1.2%

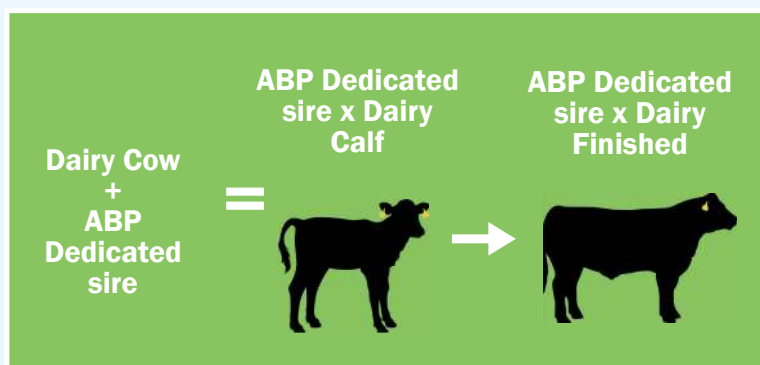
ANGUS INTEGRATED OPPORTUNITY



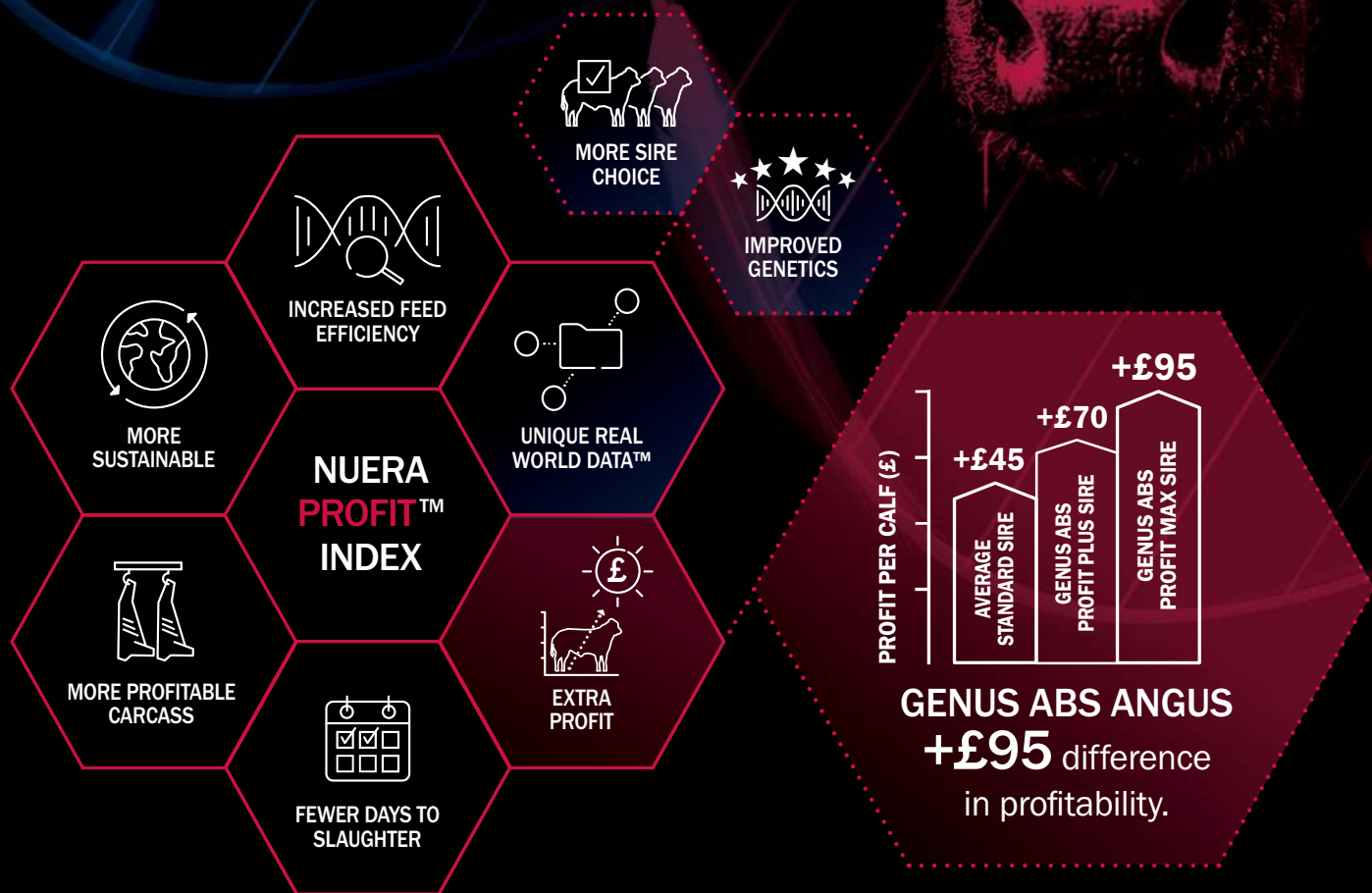
BeefConnect is a partnership founded in 2014 between Genus ABS and ABP, created to drive profitability of Angus sired progeny bred from Dairy dams.

Why join...

- Collection of calves from as young as 10 days old
- Guaranteed outlet for in specification dedicated sire calves
- You know the calf price when you inseminate your cow
- Receive up to £30.00 bonus extra per calf sired by a Genus ABS young sire
- No market commission payments, fast payment via BACS
- Invitation to exclusive supplier groups



PROFIT. IT'S IN THE GENES.



NUERA PROFIT™ INDEX

NUERA PROFIT™ is a unique index, which evaluates progeny performance through finishing to slaughter in a beef cross dairy system.

By using Real World Data™ collected from many external sources, It ranks the most profitable genetics within Angus breeds, to show £95 additional more profit per cow Genus ABS Profit Max sires deliver compared to the average of the same breed.



[www.http://bit.ly/NuEraGenetics](http://bit.ly/NuEraGenetics)



PROGENY OF KOJAK



NEWPOLE KOJAK

Ear Tag: UK 704149 100864 **Genus ABS Code:** BB1469 **NAAB Code:** 29BB0089

Sire: Newpole Easy **Dam:** Newpole Harriet **MGS:** Auchenlay Echo **Royalty:** Commercial use only

NOT ELIGIBLE FOR PEDIGREE REGISTRATIONS



BEEFADVANTAGE™ £86.94

GENUS BEEF CALVING SURVEY ON DAIRY COWS ONLY

Calvings
176

Herds
74

Reliability
★★★★

	70 BSI	100 BSI	130 BSI	GENUS ABS BREED AV.	PROVEN STATISTIC
Calving Ease (cows)			130	3.0%	0.2%
Gestation Length		124		283 days	280 days
Calf Quality			130	53%	63%
Calf Survivability			130	4.3%	1.4%



PROGENY OF NORTHPOLE



FOREST NORTHPOLE

Ear Tag: UK700436 600191 **Genus ABS Code:** BB1709 **NAAB Code:** 29BB0165

Sire: Redmires Issac **Dam:** TY ISAF EBRILL **MGS:** Hazelwood King **Royalty:** Commercial use only

NOT ELIGIBLE FOR PEDIGREE REGISTRATIONS



BEEFADVANTAGE™ £86.74

GENUS BEEF CALVING SURVEY ON DAIRY COWS ONLY

Calvings
234

Herds
72

Reliability
★★★★★

	70 BSI	100 BSI	130 BSI	GENUS ABS BREED AV.	PROVEN STATISTIC
Calving Ease (cows)			130	3.0%	1.0%
Gestation Length			130	283 days	279 days
Calf Quality			128	53%	62%
Calf Survivability			130	4.3%	2.0%



PROGENY OF NACHO



NuEra NACHO

Ear Tag: UK706042 204364 **Genus ABS Code:** BB1675 **NAAB Code:** 29BB0136

Sire: Newpole Heartthrob **Dam:** Redmires Kiwi **MGS:** Moorsley Anderson **Royalty:** Commercial use only

NOT ELIGIBLE FOR PEDIGREE REGISTRATIONS



BEEFADVANTAGE™ £84.30

GENUS BEEF CALVING SURVEY ON DAIRY COWS ONLY

Calvings
104

Herds
52

Reliability
★ ★

	70 BSI	100 BSI	130 BSI	GENUS ABS BREED AV.	PROVEN STATISTIC
Calving Ease (cows)		102		3.0%	2.9%
Gestation Length		116		283 days	281 days
Calf Quality			130	53%	69%
Calf Survivability			130	4.3%	2.2%



PROGENY OF NIGHTRIDER

NuEra NIGHTRIDER

Ear Tag: UK706042104356 **Genus ABS Code:** BB1656 **NAAB Code:** 29BB0135

Sire: Newpole Easy **Dam:** Newpole Just A Minute **MGS:** Panache De Centfontaine **Royalty:** Commercial use only

NOT ELIGIBLE FOR PEDIGREE REGISTRATIONS



BEEFADVANTAGE™ £78.59

GENUS BEEF CALVING SURVEY ON DAIRY COWS ONLY

Calvings
176

Herds
61

Reliability
★ ★ ★

	70 BSI	100 BSI	130 BSI	GENUS ABS BREED AV.	PROVEN STATISTIC
Calving Ease (cows)		126		3.0%	1.3%
Gestation Length		108		283 days	282 days
Calf Quality			130	53%	66%
Calf Survivability			130	4.3%	2.6%



PROGENY OF MONTY



CROFTSENDS MONTY

Ear Tag: UK704149 700933 Genus ABS Code: BB1564 NAAB Code: 29BB0113

Sire: Brookfield Dev Dam: Croftends Dev MGS: Tamhorn Sumo Royalty: Commercial use only

NOT ELIGIBLE FOR PEDIGREE REGISTRATIONS



BEEFADVANTAGE™ £74.46

GENUS BEEF CALVING SURVEY ON DAIRY COWS ONLY

Calvings
140

Herds
55

Reliability
★★★

	70 BSI	100 BSI	130 BSI	GENUS ABS BREED AV.	PROVEN STATISTIC
Calving Ease (cows)		103		3.0%	2.8%
Gestation Length			116	283 days	281 days
Calf Quality			130	53%	68%
Calf Survivability			114	4.3%	3.6%



PROGENY OF MONEYMAN

QUARRY BANK MONEYMAN

Ear Tag: UK 704149 100927 Genus ABS Code: BB1565 NAAB Code: 29BB0108

Sire: Brookfield Dev Dam: Quarry Bank Gail MGS: Woodbine Warrior Royalty: Commercial use only

NOT ELIGIBLE FOR PEDIGREE REGISTRATIONS



BEEFADVANTAGE™ £72.65

GENUS BEEF CALVING SURVEY ON DAIRY COWS ONLY

Calvings
259

Herds
81

Reliability
★★★★★

	70 BSI	100 BSI	130 BSI	GENUS ABS BREED AV.	PROVEN STATISTIC
Calving Ease (cows)			130	3.0%	0.2%
Gestation Length			130	283 days	279 days
Calf Quality		112		53%	57%
Calf Survivability			130	4.3%	1.6%



PROGENY OF KUDOS



NEWPOLE KUDOS

Ear Tag: UK 704149 600862 Genus ABS Code: BB1468 NAAB Code: 29BB0087

Sire: Newpole Easy Dam: Newpole Harriet MGS: Auchenlay Echo Royalty: Commercial use only

NOT ELIGIBLE FOR PEDIGREE REGISTRATIONS



BEEFADVANTAGE™ £69.41

GENUS BEEF CALVING SURVEY ON DAIRY COWS ONLY

Calvings
233

Herds
99

Reliability
★★★★★

	70 BSI	100 BSI	130 BSI	GENUS ABS BREED AV.	PROVEN STATISTIC
Calving Ease (cows)		105		3.0%	2.7%
Gestation Length		108		283 days	282 days
Calf Quality			130	53%	69%
Calf Survivability		95		4.3%	4.9%



PROGENY OF NUMBER ONE

MAES NUMBER ONE

Ear Tag: UK706356700104 Genus ABS Code: BB1727 NAAB Code: 29BB0171

Sire: Tenace De La Praule Dam: Ridge Dean Jasmine MGS: Kilowatt D'ochain Royalty: Commercial use only

NOT ELIGIBLE FOR PEDIGREE REGISTRATIONS



BEEFADVANTAGE™ £66.84

GENUS BEEF CALVING SURVEY ON DAIRY COWS ONLY

Calvings
145

Herds
62

Reliability
★★★

	70 BSI	100 BSI	130 BSI	GENUS ABS BREED AV.	PROVEN STATISTIC
Calving Ease (cows)		106		3.0%	2.6%
Gestation Length		108		283 days	282 days
Calf Quality			130	53%	65%
Calf Survivability			130	4.3%	0.5%



PROGENY OF MAJOR



CROFTENDS MAJOR

Ear Tag: UK 103135 500719 Genus ABS Code: BB1557 NAAB Code: 29BB0122

Sire: Brookfield Dev Dam: Croftends Delight MGS: Croftends Bruno Royalty: Commercial use only

NOT ELIGIBLE FOR PEDIGREE REGISTRATIONS



BEEFADVANTAGE™ £60.78

GENUS BEEF CALVING SURVEY ON DAIRY COWS ONLY

Calvings
162

Herds
75

Reliability
★★★★

	70 BSI	100 BSI	130 BSI	GENUS ABS BREED AV.	PROVEN STATISTIC
Calving Ease (cows)		106		3.0%	2.6%
Gestation Length		100		283 days	283 days
Calf Quality			130	53%	66%
Calf Survivability			130	4.3%	2.2%



PROGENY OF MECHANIC



MOORSLEY MECHANIC

Ear Tag: UK116368500032 Genus ABS Code: BB1581 NAAB Code: 29BB0128

Sire: Newpole Easy Dam: Moorsley Fifi MGS: Springfield Patrice Royalty: Commercial use only

NOT ELIGIBLE FOR PEDIGREE REGISTRATIONS



BEEFADVANTAGE™ £60.41

GENUS BEEF CALVING SURVEY ON DAIRY COWS ONLY

Calvings
220

Herds
78

Reliability
★★★★

	70 BSI	100 BSI	130 BSI	GENUS ABS BREED AV.	PROVEN STATISTIC
Calving Ease (cows)			130	3.0%	0.8%
Gestation Length		116		283 days	281 days
Calf Quality			121	53%	60%
Calf Survivability			130	4.3%	2.1%



PROGENY OF LANCER



NEWPOLE LANCER

Ear Tag: UK 704149 600883 Genus ABS Code: BB1502 NAAB Code: 29BB0097

Sire: Brookfield Dev Dam: Newpole Harriet MGS: Auchenlay Echo Royalty: Commercial use only

NOT ELIGIBLE FOR PEDIGREE REGISTRATIONS



BEEFADVANTAGE™ £59.90

GENUS BEEF CALVING SURVEY ON DAIRY COWS ONLY

Calvings
119

Herds
53

Reliability
★ ★

	70 BSI	100 BSI	130 BSI	GENUS ABS BREED AV.	PROVEN STATISTIC
Calving Ease (cows)			123	3.0%	1.5%
Gestation Length		108		283 days	282 days
Calf Quality			124	53%	61%
Calf Survivability			130	4.3%	2.1%



PROGENY OF KOWTOW



NEWPOLE KOWTOW

Ear Tag: UK704149200865 Genus ABS Code: BB1470 NAAB Code: 29BB0088

Sire: Newpole Easy Dam: Newpole Harriet MGS: Auchenlay Echo Royalty: Commercial use only

NOT ELIGIBLE FOR PEDIGREE REGISTRATIONS



BEEFADVANTAGE™ £58.79

GENUS BEEF CALVING SURVEY ON DAIRY COWS ONLY

Calvings
163

Herds
61

Reliability
★ ★ ★ ★

	70 BSI	100 BSI	130 BSI	GENUS ABS BREED AV.	PROVEN STATISTIC
Calving Ease (cows)			121	3.0%	1.6%
Gestation Length		108		283 days	283 days
Calf Quality			125	53%	61%
Calf Survivability			130	4.3%	1.5%

MAXWELL



BRITISH BLUE



PROGENY OF MAXWELL



MOORSLEY MAXWELL

Ear Tag: UK11636 8300037 **Genus ABS Code:** BB1686 **NAAB Code:** 29BB0154
Sire: Newpole Easy **Dam:** Moorsley Izzy **MGS:** Affute Du Ry **Royalty:** Commercial use only
NOT ELIGIBLE FOR PEDIGREE REGISTRATIONS



BEEFADVANTAGE™ £57.90

GENUS BEEF CALVING SURVEY ON DAIRY COWS ONLY

Calvings 120 **Herds** 45 **Reliability** ★ ★ ★

	70 BSI	100 BSI	130 BSI	GENUS ABS BREED AV.	PROVEN STATISTIC
Calving Ease (cows)		109		3.0%	2.4%
Gestation Length		116		283 days	281 days
Calf Quality			130	53%	64%
Calf Survivability		112		4.3%	3.7%

LEMMY



BRITISH BLUE



PROGENY OF LEMMY



NEWPOLE LEMMY

Ear Tag: UK 706042 303952 **Genus ABS Code:** BB1505 **NAAB Code:** 29BB0094
Sire: Brookfield Dev **Dam:** Newpole Halo **MGS:** Greystone Turbo **Royalty:** Commercial use only
NOT ELIGIBLE FOR PEDIGREE REGISTRATIONS



BEEFADVANTAGE™ £55.10

GENUS BEEF CALVING SURVEY ON DAIRY COWS ONLY

Calvings 91 **Herds** 53 **Reliability** ★ ★

	70 BSI	100 BSI	130 BSI	GENUS ABS BREED AV.	PROVEN STATISTIC
Calving Ease (cows)		115		3.0%	2.0%
Gestation Length		100		283 days	283 days
Calf Quality			128	53%	62%
Calf Survivability			130	4.3%	1.4%

NANDO



BRITISH BLUE



PROGENY OF NANDO



BIRSEMOHR NANDO

Ear Tag: UK 521014 300122 **Genus ABS Code:** BB1676 **NAAB Code:** 29BB0148
Sire: Wilodge Ulex **Dam:** Birsemohr Kitkat **MGS:** Colos Van Daisel **Royalty:** Commercial use only
NOT ELIGIBLE FOR PEDIGREE REGISTRATIONS



BEEFADVANTAGE™ £55.00

GENUS BEEF CALVING SURVEY ON DAIRY COWS ONLY

Calvings 149 **Herds** 54 **Reliability** ★ ★ ★

	70 BSI	100 BSI	130 BSI	GENUS ABS BREED AV.	PROVEN STATISTIC
Calving Ease (cows)	87			3.0%	3.9%
Gestation Length		124		283 days	280 days
Calf Quality			130	53%	68%
Calf Survivability		104		4.3%	4.1%

LYNX



BRITISH BLUE



PROGENY OF LYNX



NEWPOLE LYNX

Ear Tag: UK 704149 700884 **Genus ABS Code:** BB1504 **NAAB Code:** 29BB0096
Sire: Brookfield Dev **Dam:** Newpole Harriet **MGS:** Auchenlay Echo **Royalty:** Commercial use only
NOT ELIGIBLE FOR PEDIGREE REGISTRATIONS



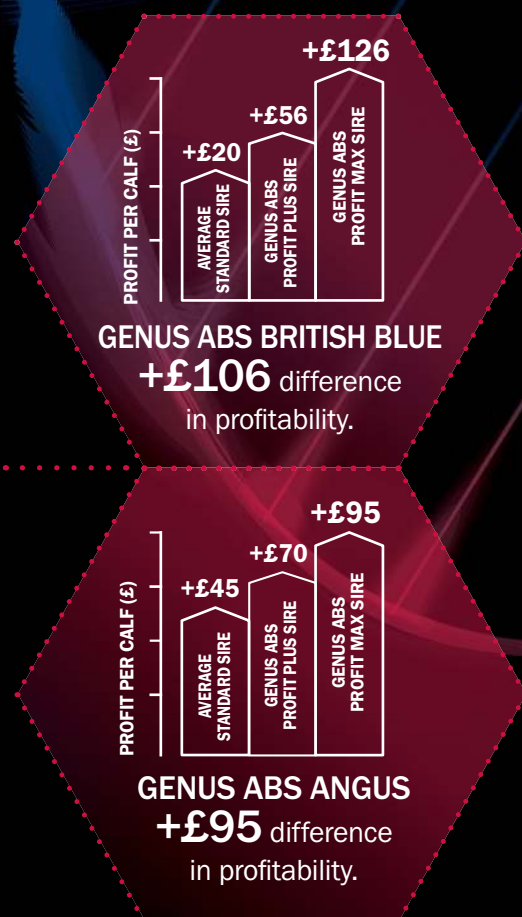
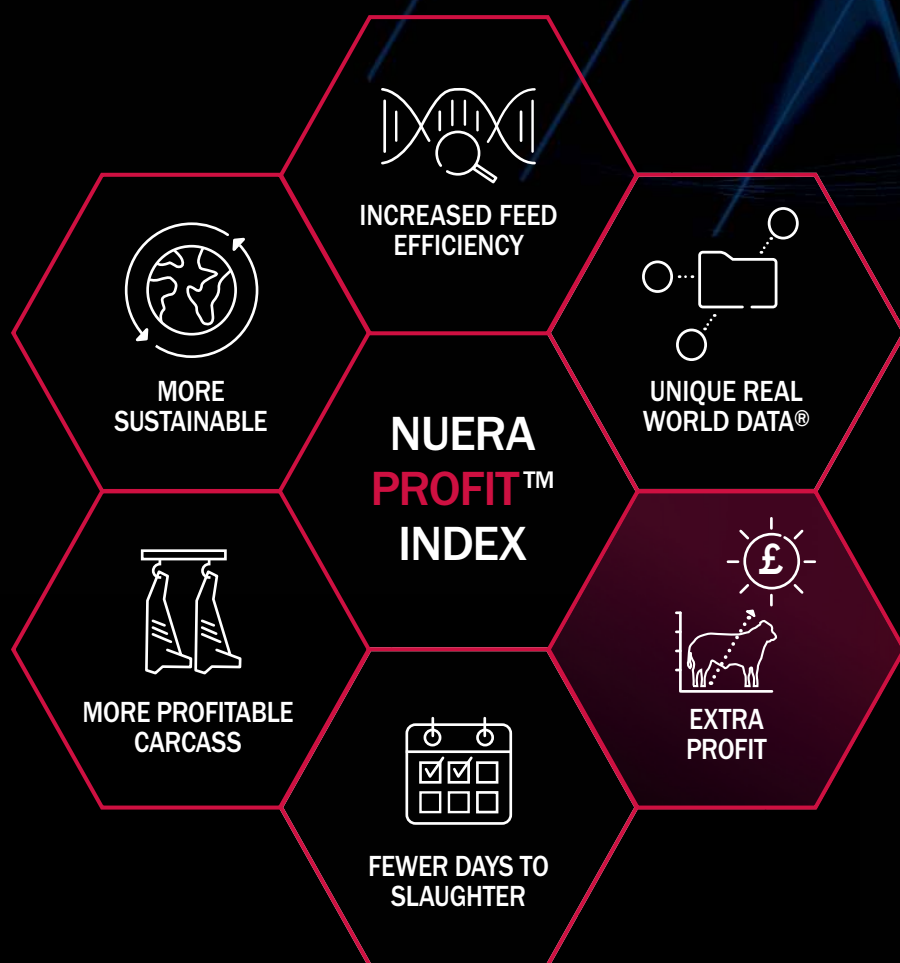
BEEFADVANTAGE™ £54.40

GENUS BEEF CALVING SURVEY ON DAIRY COWS ONLY

Calvings 121 **Herds** 53 **Reliability** ★ ★ ★

	70 BSI	100 BSI	130 BSI	GENUS ABS BREED AV.	PROVEN STATISTIC
Calving Ease (cows)			130	3.0%	0.5%
Gestation Length		108		283 days	282 days
Calf Quality			115	53%	58%
Calf Survivability			130	4.3%	1.1%

PROFIT. IT'S IN THE GENES.



NUERA PROFIT™ INDEX

is a unique index which evaluates progeny performance from finishing to slaughter in a beef cross dairy system.

By using ABS® **Real World Data™** collected from many external sources, the index ranks the most profitable genetics within the British Blue and Angus breeds.

It shows the extra profitability **Beef InFocus™** sires deliver compared to the average profit of the same breed. Helping you to maximise the value of your beef calf crop by creating animals that are more efficient and more sustainable for the whole beef supply chain.



[www.http://bit.ly/NuEraGenetics](http://bit.ly/NuEraGenetics)



PROGENY OF LAMBORGHINI



NEWPOLE LAMBORGHINI

Ear Tag: UK 706042 103992 **Genus ABS Code:** BB1506 **NAAB Code:** 29BB0100

Sire: Brookfield Dev **Dam:** Newpole Halo **MGS:** Greystone Turb **Royalty:** Commercial use only

NOT ELIGIBLE FOR PEDIGREE REGISTRATIONS



BEEFADVANTAGE™ £52.10

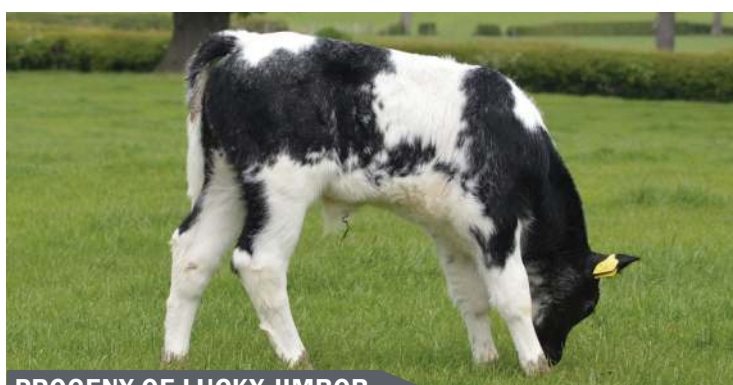
GENUS BEEF CALVING SURVEY ON DAIRY COWS ONLY

Calvings
112

Herds
51

Reliability
★★

	70 BSI	100 BSI	130 BSI	GENUS ABS BREED AV.	PROVEN STATISTIC
Calving Ease (cows)		97		3.0%	3.2%
Gestation Length		100		283 days	283 days
Calf Quality			130	53%	65%
Calf Survivability			128	4.3%	2.9%



PROGENY OF LUCKY JIMBOB

SPRINGFIELD LUCKY JIMBOB

Ear Tag: UK 181171 100197 **Genus ABS Code:** BB1533 **NAAB Code:** 29BB0107

Sire: Nightingale Eldorado G381 **Dam:** Bosullow Erica N372 **MGS:** Bosullow Trannack L298 **Royalty:** Commercial use only

NOT ELIGIBLE FOR PEDIGREE REGISTRATIONS



BEEFADVANTAGE™ £42.61

GENUS BEEF CALVING SURVEY ON DAIRY COWS ONLY

Calvings
209

Herds
82

Reliability
★★★★★

	70 BSI	100 BSI	130 BSI	GENUS ABS BREED AV.	PROVEN STATISTIC
Calving Ease (cows)		114		3.0%	3.2%
Gestation Length		92		283 days	283 days
Calf Quality			122	53%	65%
Calf Survivability			130	4.3%	2.9%

JUPITER



BRITISH BLUE



PROGENY OF JUPITER

GREYSTONE JUPITER

Ear Tag: UK 125185 500299 **Genus ABS Code:** BB1387 **NAAB Code:** 29BB0065
Sire: Almeley Ginola **Dam:** Greystone Olive **MGS:** Ardent De Maurag **Royalty:** £30 + VAT



BEEFADVANTAGE™ £39.90

GENUS BEEF CALVING SURVEY ON DAIRY COWS ONLY

Calvings 210 **Herds** 90 **Reliability** ★★★★★

	70 BSI	100 BSI	130 BSI	GENUS ABS BREED AV.	PROVEN STATISTIC
Calving Ease (cows)			121	3.0%	1.6%
Gestation Length		108		283 days	282 days
Calf Quality			113	53%	57%
Calf Survivability			122	4.3%	3.2%

MAGNUM



BRITISH BLUE



PROGENY OF MAGNUM

NUERA MAGNUM

Ear Tag: UK706042 704341 **Genus ABS Code:** BB1639 **NAAB Code:** 29BB0126
Sire: Newpole Easy **Dam:** Newpole Just a Minute **MGS:** Panache De De Centfontaine **Royalty:** Commercial use only
NOT ELIGIBLE FOR PEDIGREE REGISTRATIONS



BEEFADVANTAGE™ £38.70

GENUS BEEF CALVING SURVEY ON DAIRY COWS ONLY

Calvings 129 **Herds** 49 **Reliability** ★★★

	70 BSI	100 BSI	130 BSI	GENUS ABS BREED AV.	PROVEN STATISTIC
Calving Ease (cows)			121	3.0%	1.6%
Gestation Length		100		283 days	283 days
Calf Quality			115	53%	58%
Calf Survivability			128	4.3%	2.9%

MILESTONE



BRITISH BLUE



PROGENY OF MILESTONE



NUERA MILESTONE



Ear Tag: UK706042 204343 **Genus ABS Code:** BB1640 **NAAB Code:** 29BB0134
Sire: Newpole Heartthrob **Dam:** Redmires Kiwi **MGS:** Moorsley Anderso **Royalty:** Commercial use only
NOT ELIGIBLE FOR PEDIGREE REGISTRATIONS

BEEFADVANTAGE™ £37.00
 GENUS BEEF CALVING SURVEY ON DAIRY COWS ONLY

Calvings 134 **Herds** 51 **Reliability** ★ ★ ★

	70 BSI	100 BSI	130 BSI	GENUS ABS BREED AV.	PROVEN STATISTIC
Calving Ease (cows)		100		3.0%	3%
Gestation Length		100		283 days	282 days
Calf Quality			130	53%	57%
Calf Survivability		92		4.3%	3.2%

LUDDITE



BRITISH BLUE



PROGENY OF LUDDITE



BAMS LUDDITE



Ear Tag: UK 125363 401788 **Genus ABS Code:** BB1553 **NAAB Code:** 29BB0120
Sire: Brookfield Dev **Dam:** Harestone Daffodil **MGS:** Auchenlay Vagabon **Royalty:** Commercial use only
NOT ELIGIBLE FOR PEDIGREE REGISTRATIONS

BEEFADVANTAGE™ £35.30
 GENUS BEEF CALVING SURVEY ON DAIRY COWS ONLY

Calvings 252 **Herds** 81 **Reliability** ★ ★ ★ ★ ★

	70 BSI	100 BSI	130 BSI	GENUS ABS BREED AV.	PROVEN STATISTIC
Calving Ease (cows)		118		3.0%	1.8%
Gestation Length			124	283 days	280 days
Calf Quality		106		53%	55%
Calf Survivability		104		4.3%	4.1%


PROGENY OF LOGIC

MOORSLEY LOGIC
Ear Tag: UK116368 600012 **Genus ABS Code:** BB1525 **NAAB Code:** 29BB0103

Sire: Brookfield Dev **Dam:** Moorsley Honey **MGS:** Moorsley Anderson **Royalty:** Commercial use only

NOT ELIGIBLE FOR PEDIGREE REGISTRATIONS


BEEFADVANTAGE™ £33.50

GENUS BEEF CALVING SURVEY ON DAIRY COWS ONLY
Calvings
83

Herds
44

Reliability
★

	70 BSI	100 BSI	130 BSI	GENUS ABS BREED AV.	PROVEN STATISTIC
Calving Ease (cows)			130	3.0%	0.3%
Gestation Length		108		283 days	282 days
Calf Quality		98		53%	52%
Calf Survivability			130	4.3%	2.4%


PROGENY OF MERCURY
PENDLE MERCURY
Ear Tag: UK704149 300936 **Genus ABS Code:** BB1569 **NAAB Code:** 29BB0116

Sire: Newpole Easy **Dam:** Pendle Jewel **MGS:** Cristal De Somme **Royalty:** Commercial use only

NOT ELIGIBLE FOR PEDIGREE REGISTRATIONS


BEEFADVANTAGE™ £32.60

GENUS BEEF CALVING SURVEY ON DAIRY COWS ONLY
Calvings
202

Herds
71

Reliability
★★★★★

	70 BSI	100 BSI	130 BSI	GENUS ABS BREED AV.	PROVEN STATISTIC
Calving Ease (cows)		102		3.0%	2.9%
Gestation Length		92		283 days	284 days
Calf Quality			121	53%	60%
Calf Survivability			130	4.3%	1.6%

MINOTAUR



BRITISH BLUE



PROGENY OF LOGIC



CROFTENDS MINOTAUR

Ear Tag: UK 704149 400930 Genus ABS Code: BB1566 NAAB Code: 29BB0112

Sire: Brookfield Dev Dam: Croftends Jess MGS: Tamhorn Sumo Royalty: Commercial use only

NOT ELIGIBLE FOR PEDIGREE REGISTRATIONS



BEEFADVANTAGE™ £12.10

GENUS BEEF CALVING SURVEY ON DAIRY COWS ONLY

Calvings
299

Herds
83

Reliability
★★★

	70 BSI	100 BSI	130 BSI	GENUS ABS BREED AV.	PROVEN STATISTIC
Calving Ease (cows)		105		3.0%	2.7%
Gestation Length	92			283 days	284 days
Calf Quality		112		53%	57%
Calf Survivability	96			4.3%	4.8%

PROTEUS



HEREFORD



PROGENY OF PROTEUS



BARWISE 1 PROTEUS

Ear Tag: UK 103000 200992 Genus ABS Code: H9323 NAAB Code: 29HP0939

Sire: Barwise 1 Wellington (P) Dam: Barwise 1 Rosie (P) MGS: CS Boomer 29F (P) Royalty: £35 + VAT

HETEROZYGOUS POLLED

BEEFADVANTAGE™ £42.70

GENUS BEEF CALVING SURVEY ON DAIRY COWS ONLY

Calvings
47

Herds
35

Reliability

	70 BSI	100 BSI	130 BSI	GENUS ABS BREED AV.	PROVEN STATISTIC
Calving Ease (cows)			130	1.3%	0.2%
Gestation Length		108		282 days	281 days
Calf Quality			115	NA	53%
Calf Survivability		108		3.2%	2.8%



PROGENY OF NORRIS



ALDEROAK 1 NORRIS

Ear Tag: UK 304771 300418 **Genus ABS Code:** H9329 **NAAB Code:** 29HP0937

Sire: Days Calibre G74 (P) **Dam:** Frenchstone P. 1 Boo (P) **MGS:** Bosa 1 Mr Bean (P) **Royalty:** £35+VAT

BEEFADVANTAGE™ £40.20
GENUS BEEF CALVING SURVEY ON DAIRY COWS ONLY

Calvings 122 **Herds** 44 **Reliability** ★ ★ ★

	70 BSI	100 BSI	130 BSI	GENUS ABS BREED AV.	PROVEN STATISTIC
Calving Ease (cows)	84			1.3%	2.4%
Gestation Length		100		282 days	282 days
Calf Quality			130	NA	67%
Calf Survivability		98		3.2%	3.4%



HEAN 1 ROSCOE

Ear Tag: UK746293 700899 **Genus ABS Code:** H9299 **NAAB Code:** 29HP0943

Sire: Romany 1 Nailer (S) **Dam:** Hean 1 Marigold 784 (P) **MGS:** Studdolph 1 Topper (P) **Royalty:** £35 + VAT

BEEFADVANTAGE™ £27.50
GENUS BEEF CALVING SURVEY ON DAIRY COWS ONLY

Calvings 80 **Herds** 35 **Reliability** ★

	70 BSI	100 BSI	130 BSI	GENUS ABS BREED AV.	PROVEN STATISTIC
Calving Ease (cows)	70			1.3%	4.6%
Gestation Length	76			282 days	285 days
Calf Quality			130	NA	72%
Calf Survivability		104		3.2%	3.0%



TOMSCHOICE ONSLOW

Ear Tag: UK124148 300477 **Genus ABS Code:** LN2792 **NAAB Code:** 29LN0108
Sire: Mereside Leo **Dam:** Tomschoice Ici **MGS:** Kaprico Eravelle **Royalty:** £35 + VAT

BEEFADVANTAGE™ £67.90
GENUS BEEF CALVING SURVEY ON DAIRY COWS ONLY

Calvings 87 **Herds** 45 **Reliability** ★

	70 BSI	100 BSI	130 BSI	GENUS ABS BREED AV.	PROVEN STATISTIC
Calving Ease (cows)		112		2.4%	1.6%
Gestation Length		116		288 days	286 days
Calf Quality			130	50%	65%
Calf Survivability			130	5.2%	1.4%



TWEEDDALE LENNOX

Ear Tag: UK 107511 701696 **Genus ABS Code:** LN2641 **NAAB Code:** 29LM0104
Sire: Goldies Goldmine **Dam:** Emslies Heledd **MGS:** Emslies Colossus **Royalty:** £35 + VAT

BEEFADVANTAGE™ £14.60
GENUS BEEF CALVING SURVEY ON DAIRY COWS ONLY

Calvings 121 **Herds** 87 **Reliability** ★★ ★

	70 BSI	100 BSI	130 BSI	GENUS ABS BREED AV.	PROVEN STATISTIC
Calving Ease (cows)		102		2.4%	2.3%
Gestation Length		108		288 days	287 days
Calf Quality		94		50%	48%
Calf Survivability			130	5.2%	1.2%



CARREG SAINFOIN

Ear Tag: UK741281 100284 **Genus ABS Code:** LH0920 **NAAB Code:** 29TL0007
Sire: Fishwick Macavity **Dam:** Carreg Flora **MGS:** Raceview King **Royalty:** Commercial use only
NOT ELIGIBLE FOR PEDIGREE REGISTRATIONS

BEEFADVANTAGE™ £25.50
GENUS BEEF CALVING SURVEY ON DAIRY COWS ONLY

Calvings 45 **Herds** 4 **Reliability**

	70 BSI	100 BSI	130 BSI	GENUS ABS BREED AV.	PROVEN STATISTIC
Calving Ease (cows)			130	1.9%	2.4%
Gestation Length	92			283 days	282 days
Calf Quality		106		53%	67%
Calf Survivability			130	3.6%	3.4%

EXCLUSIVE



SIMMENTAL



PROGENY OF EXCLUSIVE



DENIZES EXCLUSIVE

Ear Tag: UK 181888 101302 **Genus ABS Code:** SG1198 **NAAB Code:** 29SM0470
Sire: Cairnview Snazzy **Dam:** Ranfurly Beauty 5th C4 **MGS:** Whitemire King Kong **Royalty:** £35 + VAT

BEEFADVANTAGE™ £60.00
GENUS BEEF CALVING SURVEY ON DAIRY COWS ONLY

Calvings 136 **Herds** 64 **Reliability** ★ ★ ★

	70 BSI	100 BSI	130 BSI	GENUS ABS BREED AV.	PROVEN STATISTIC
Calving Ease (cows)		100		3.3%	3.3%
Gestation Length			116	284 days	284 days
Calf Quality			130	NA	62%
Calf Survivability			130	4.5%	1.6%

**DENIZES IBRAHAM 17****Ear Tag:** 41281 601790 **Genus ABS Code:** SG1293 **NAAB Code:** 29SM0487**Sire:** Dinton Nautical **Dam:** Raceview Cinderella Kim **MGS:** Raceview King **Royalty:** £35 + VAT**BEEFADVANTAGE™ £63.00**

GENUS BEEF CALVING SURVEY ON DAIRY COWS ONLY

Calvings
51**Herds**
18**Reliability**

	70 BSI	100 BSI	130 BSI	GENUS ABS BREED AV.	PROVEN STATISTIC
Calving Ease (cows)		103		3.3%	3.1%
Gestation Length		108		284 days	285 days
Calf Quality			130	NA	65%
Calf Survivability			130	4.5%	2.5%

**MACQUARIE PRELUDE M0495****Ear Tag:** BDWFM0495 **Genus ABS Code:** MS0047 **NAAB Code:** 29KB0005**Sire:** Macquarie Wagyu Y408 **Dam:** Macquarie Wagyu C1589 **MGS:** World K's Michifuku **Royalty:** Commercial use only**BEEFADVANTAGE™ £45.30**

GENUS BEEF CALVING SURVEY ON DAIRY COWS ONLY

Calvings
57**Herds**
5**Reliability**

	70 BSI	100 BSI	130 BSI	GENUS ABS BREED AV.	PROVEN STATISTIC
Calving Ease (cows)		121		2.0%	3.1%
Gestation Length			130	286 days	285 days
Calf Quality		112		50%	65%
Calf Survivability		104		3.6%	2.5%



ARUBIAL OVERTURE N0106

Ear Tag: MYMFN0106 NAAB Code: 29KB006

Sire: Itoshigenami Dam: Broombee Teruyamamoto X125 MGS: Hirashigetayasu J2351 Hongen Royalty: Commercial use only
NOT ELIGIBLE FOR PEDIGREE REGISTRATIONS

BEEFADVANTAGE™ £32.40
GENUS BEEF CALVING SURVEY ON DAIRY COWS ONLY

Calvings 74 Herds 3 Reliability ★

	70 BSI	100 BSI	130 BSI	GENUS ABS BREED AV.	PROVEN STATISTIC
Calving Ease (cows)			130	2.0%	2.3%
Gestation Length		100		286 days	287 days
Calf Quality		106		50%	48%
Calf Survivability			130	3.6%	1.2%



BEEF SHORTHORN

M
JAN

NAPOLEON
NAPOLEON OF UPSALL (P)

Royalty: £35 + VAT
Ear Tag: UK121060601374
Genus ABS Code: BS0767
NAAB Code: 829SS0038

Sire: Lawyer Of Upsall (P)
Dam: Augusta X1158 of Upsall (P)
MGS: Firefox of Upsall (P)



Profit from Genetic Progress

Learn more at WWW.ABSGLOBAL.COM/UK/ or talk to your Genus ABS representative today to bring your herd's future into focus.

Alpha Building, London Road, Nantwich, CW5 7JW | 01270 616681



**STRONG INDIVIDUALLY,
BUT BETTER TOGETHER**



“The excellent results we get with Sexcel mean we breed all of our replacements from the top 90% of heifers and our better first lactation animals, boosting genetic progress and maximising our beef calf crop.”

Stephen and Sarah Suckley - Jones, Banhadla Farm, UK



Alfie Shaw

SPIKE

SOLPOLL 1 SPIKE

Royalty: £35 + VAT
 Ear Tag: UK933011 331405
 Genus ABS Code: H9281
 NAAB Code: 29HP0949

Sire: Moeskaer Upgrade (P)
 Dam: Solpoll 1 Starlett L3 (P)
 MGS: Panmure 1 Henry (P)

**UNDER
SURVEY**



*MacG
Mar'19*

RANCHER

FISHER 1 RANCHER R483

ROYALTY: £35 + VAT
 EAR TAG: UK263027 00483
 GENUS ABS CODE: H9297
 NAAB CODE: 29HP0944

Sire: Fisher 1 Midas M415 (P)
 Dam: Fisher 1 Susan J343(P)
 MGS: Yalgoo Boulder 2250 (P)

**UNDER
SURVEY**



LIMOUSIN



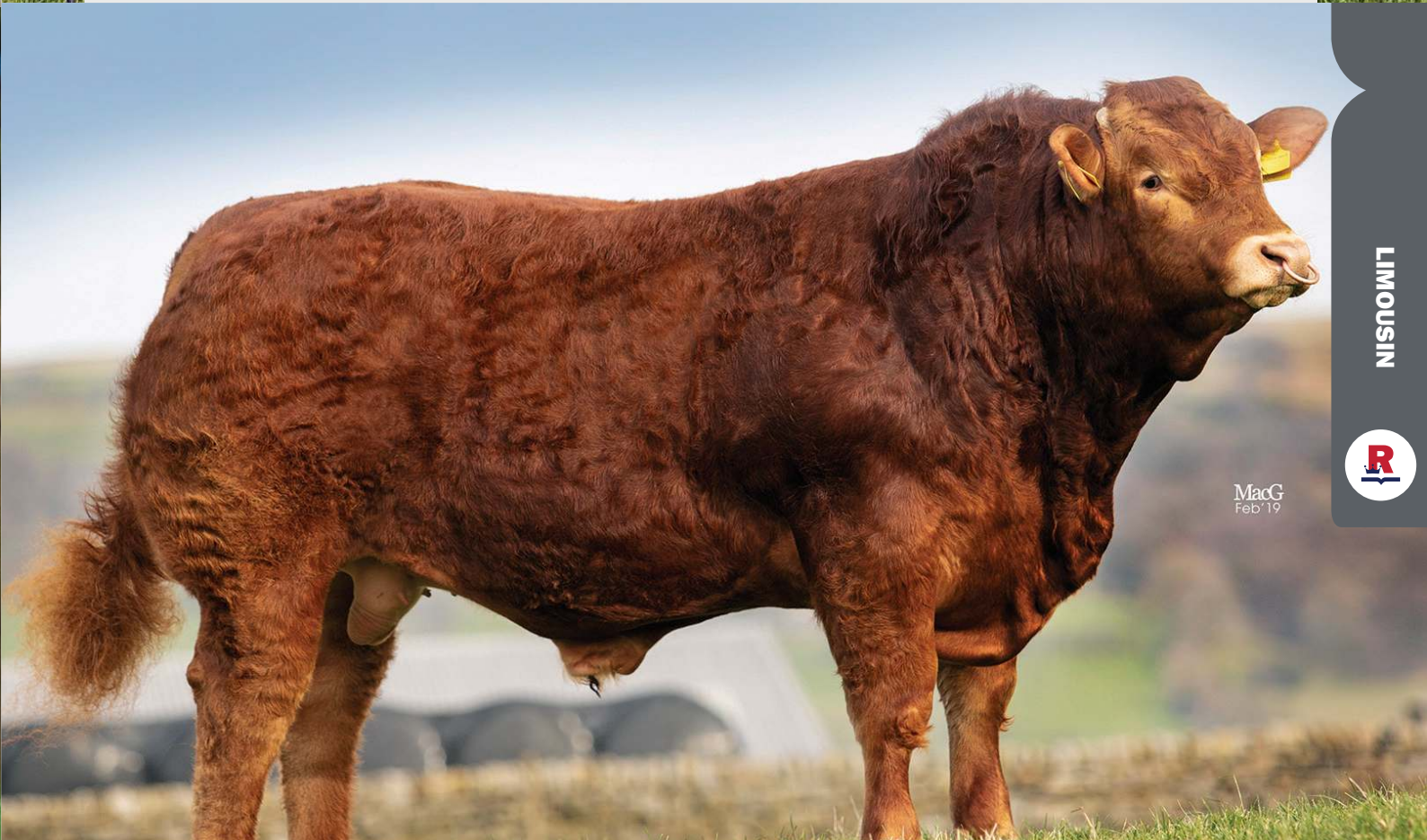
PAVAROTTI

TOMSCHOICE PAVAROTTI

Royalty: £35 + VAT
Ear Tag: UK124148 300533
Genus ABS Code: LN2865
NAAB Code: 29LM0109

Sire: Goldies Nicolas
Dam: Tomschoice Gigi
MGS: Homebyres Drummie

**UNDER
SURVEY**



LIMOUSIN



MacG
Feb '19

NATION

TOMSCHOICE NATION

Royalty: £35 + VAT
Ear Tag: UK124148 100440
Genus ABS Code: LN2791
NAAB Code: 29LM0107

Sire: Kaprico Eravelle
Dam: Tomschoice Imagination
MGS: Haltcliffe Vermount

**UNDER
SURVEY**



ANTICIPATED

ARUBIAL ANTICIPATED Q0014

Royalty: Commercial use only
 Ear Tag: MYMFQ0014
 Genus ABS Code: N/A
 NAAB Code: 29KB0010

Sire: Itoshigenami GG13
 Dam: Peppermill Grove L0021
 MGS: Mayura Itoshigenami Jnr



LONGFORD

LONGFORD F E0241

Royalty: Commercial use only
 Ear Tag: LFDfE0241
 Genus ABS Code: MS0032
 NAAB Code: 29KB0003

Sire: TWA Ichiryuno
 Dam: Longford LFDB1065
 MGS: Kitateruyasudo J2810 Hongen

Working with AHDB to take our industry higher

SHOUT ABOUT THE SIRE

When registering calves with
BCMS, please remember to
include the Sire ID details.



#SHOUTABOUTTHESIRE

TRAIT LEADERS

CONTINENTAL

BeefAdvantage	(£)
Newpole Kojak	£86.94
Forest Northpole	£86.74
NuEra Nacho	£84.28
Nuera Nightrider	£78.59
Croftends Monty	£74.46

Calving Ease	%
Newpole Kojak	0.2
Quarrybank Moneyman	0.2
Newpole Lynx	0.5
Moorsley Mechanic	0.8
Forest Northpole	1

Calf Quality	%
Nuera Nacho	69
Newpole Kudos	69
Biresmohr Nando	68
Croftends Monty	68
Nuera Nightrider	66

Gestation Length	days
Forest Northpole	279
Quarrybank Moneyman	279
Newpole Kojak	280
Bams Luddite	280
Biresmohr Nando	280

Calf Survivability	%
Maes Number One	0.5
Tomschoice Onslow	0.5
Newpole Lynx	1.1
Newpole Kojak	1.4
Newpole Lemmy	1.4



NATIVE

BeefAdvantage	(£)
Hw Fletcher	£86.21
Abs Espresso	£80.02
Bosulow Elite	£60.00
Nuera 0072	£57.60
Ribble Black Brook	£56.47

Calving Ease (cows)	%
Barwise 1 Proteus	0.2
HW Fletcher	0.4
NuEra 0072	0.4
Bosulow Elite	0.5
Ribble Black Brook	0.6

Calf Quality	%
Abs Espresso	66
Oakchurch Darcy	65
Millbrae Black Jackdaw	65
Hw Fletcher	64
Haymount Warsmith	63

Gestation Length	days
Ribble Black Brook	277
Abs Espresso	280
Hw Fletcher	280
Nuera 0072	281
Abs Titus	281

Calf Survivability	%
Hw Fletcher	0.2
Abs Titus	1.2
Haymount Warsmith	1.6
Oakchurch Darcy	1.8
Bosulow Elite	1.8

Fertility *plus*®

"At a current pregnancy rate of 30% on RMS, the Blue Elite mix provides added fertility and genetics that produce calves with great calf quality. "

N Evans, Powys

400 cow flying herd been on RMS for 10 years



We offer seven unique Fertility plus® products all offering different qualities to beef and dairy customers but all offering the added fertility benefit:

Fertility *plus*® BLUE ELITE

Contains semen from the most profitable British Blue sires with superior calf quality and all certified as 'proven' in our beef stud.

Fertility *plus*® NATIVE

Contains semen from Native breed sires all certified as 'proven' in our beef stud.

Fertility *plus*® 280

Contains semen from a combination of short gestation sires, averaging 280 days and all certified as 'proven' in our beef stud.

Fertility *plus*® BRITISH BLUE

Contains semen from the British Blue sires that are above average for calving ease and certified as 'proven' in our beef stud.

Fertility *plus*® TOP CALF

Contains semen from sires who score an average of 115 BSI for calf quality all certified as 'proven' in our beef stud.

Fertility *plus*® QUALITY

Contains semen from sires that are Meadow Quality Superior Sires.

Fertility *plus*® EASY CALVER

Contains semen from three sires that score over 110 BSI for calving ease.





The right game plan always wins

Farmers around the world are drafting this winning plan with Genus ABS.

A Sexcel® and Beef InFocus™ strategy delivers unbeatable, step-changing genetic progress. Genus ABS specialists create a customised genetic plan to make better cows faster and the industry's best beef x dairy calves. A winning plan is a profitable plan.

Get the game plan for profitability at absglobal.com/winning-plan or talk to your Genus ABS representative today.

Profit from Genetic Progress

©2020 Genus Breeding Ltd | Alpha Building, London Road, Nantwich, Cheshire CW5 7JW



POWERED BY
IntelliGen
TECHNOLOGIES

Bull Search

Now including our Beef InFocus™ sires

- Mobile device friendly
- Email or print reports directly from the tool
- Go to absbullsearch.absglobal.com



Profit From Genetic Progress

Headquartered in Nantwich, Cheshire, UK, Genus ABS is the world-leading provider of genetic improvement solutions and reproduction services that help customers **PROFIT FROM GENETIC PROGRESS**. Marketing in nearly 80 countries around the globe, Genus ABS has been at the forefront of animal genetics and technologies since its founding 75 years ago. Genus ABS is a division of Genus plc.

Find us on:    



Genus Breeding Ltd, Alpha Building, London Road, Nantwich, CW5 7JW, Telephone: 01270 616681 Fax: 01270 616702

Website: absglobal.com/uk/