



# Guide to Preschool & Child Care Programs

in Charlevoix, Emmet, and Northern Antrim Counties

# Table of Contents



Building Strong Foundations .....	3
Types of Early Child Care Programs .....	4-9
Great Start to Quality’s Focus on Continuous Improvement.....	10-11
The Path to Preschool .....	12-13
Child Development and Care Program (CDC).....	14-15
Universal Preschool for All 4 Year-Olds .....	16-17
Alanson .....	18-23
Beaver Island .....	24-25
Boyne City .....	26-37
Boyne Falls .....	38-39
Central Lake.....	40-43
Charlevoix .....	44-55
East Jordan.....	56-63
Ellsworth.....	64-65
Harbor Springs .....	66-71
Pellston.....	72-79
Petoskey.....	80-95
Child Development Resources .....	96-97

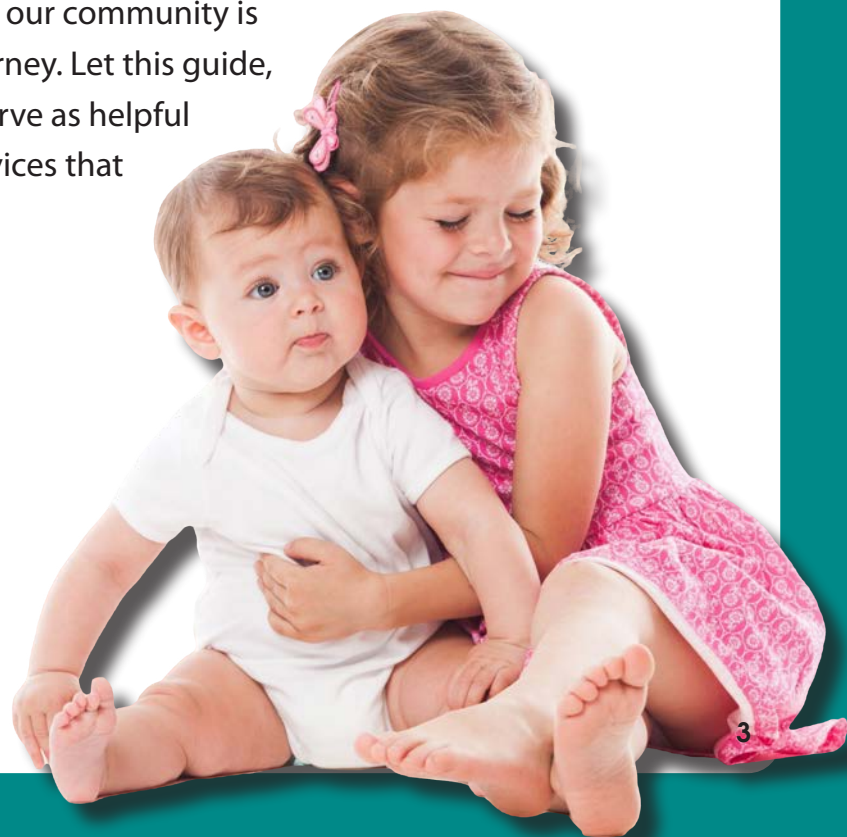
# Building Strong Foundations:

## The Importance of Early Learning Experiences

Early education plays an important role in helping young children grow and learn. It sets the stage for their future success in school and life. During this time, kids develop key skills like thinking, solving problems, and learning how to work with others. By taking part in planned activities, children improve their language, social skills, and teamwork.

Studies show that kids who attend good preschool programs and child care tend to do better in school, behave well with others, and have fewer difficulties as they grow up. Early learning experiences help children build curiosity, confidence, and a love for learning, preparing them for the challenges of school and life. These learning experiences also lead to better grades, stronger career paths, and a healthier, happier life as adults.

This guide is designed to help families in Charlevoix, Emmet, and northern Antrim Counties explore the variety of high-quality preschools and child care providers available in our region. We believe every child deserves the best possible start, and our community is rich with options to support families on this journey. Let this guide, along with the [Great Start to Quality website](#), serve as helpful resources for discovering the programs and services that will help your child grow, learn, and thrive.



# Types of Early Child Care and Preschool Programs

This guide is organized by city and then by program type: home-based child care, center-based child care, and center-based preschool. These categories include both privately run programs and those funded by the state or federal government. You may see providers in more than one section. This is because some of them offer both preschool and child care options. For example, your child might attend preschool in the morning and child care in the afternoon all at the same center.

By explaining the different types of programs and providers that support early childhood in Charlevoix, Emmet, and northern Antrim Counties, we hope to help you better understand the child care options available to you.



## Home-Based Child Care

### Licensed Providers

A home-based licensed child care provider is a professional who offers child care services in their own home while meeting state licensing requirements. These providers are trained and certified to care for children in a safe, nurturing, and stimulating environment that feels like home.

Licensed home-based child care providers must adhere to regulations set by the state, including safety standards, caregiver-to-child ratios, and educational requirements. They typically offer smaller group settings, which allows for more personalized care and attention to each child. Many home-based providers also include activities that support early learning, socialization, and age-appropriate skill development.

For families seeking a flexible and family-like atmosphere for their child's care, home-based licensed providers are an excellent option that blends professional oversight with the comforts of a home environment.

### License Exempt Providers

Finding appropriate child care can be difficult for families. Especially when they have special circumstances such as needing non-traditional care hours. Home-based License Exempt Providers can help address many of these difficulties. Providers are adults who care for children in either their home (family related providers) or in the child's home (unrelated providers).

Providers are required to complete a one-time License Exempt Provider Preservice Training and an annual Health and Safety refresher course registered through MiRegistry. Learn more [here!](#)

## Center-Based Child Care

Center-based childcare provides care and early education for young children in facilities designed just for them. These programs are licensed by the state to meet important safety, health, and learning standards.

In these centers, children follow a daily routine with activities that help them grow physically, mentally, socially, and emotionally. Teachers are trained to work with young children and organize classrooms by age to provide the right kind of learning experiences.

Center-based child care also focuses on education, using activities and lessons to build early skills like reading, math, and problem-solving. Children get to play and learn with others their age, which helps them develop social skills like sharing and teamwork. These programs give children a strong start, preparing them for school while supporting families with reliable care.

You may notice that some programs are listed in both the child care and preschool sections. This is because some center-based preschools also offer before and after school child care.

# Home-Based Preschool

NEW!

Northwest Michigan Community Action Agency (NMCAA) now offers a high-quality home-based Head Start preschool program for children ages 3 to 5, right in the comfort of their own homes. Designed to support kindergarten readiness, this unique program provides weekly visits from a certified preschool teacher, focusing on building essential cognitive, social-emotional, and physical skills through engaging, play-based learning experiences. For families who qualify, Head Start provides additional comprehensive services, including:

- ▶ Education & School Readiness
- ▶ Structured learning experiences to prepare for kindergarten.
- ▶ Health & Nutrition – Health screenings and nutritious meal support.
- ▶ Family Support Services – Connecting families to community resources and programs.

Our home-based preschool program is committed to providing accessible, high-quality early childhood education that nurtures young learners and supports families.

## Program Highlights:

- ▶ One-on-One Learning: Personalized, developmentally appropriate lessons tailored to each child's needs.
- ▶ School Readiness: Activities designed to enhance early literacy, math, problem-solving, and motor skills.
- ▶ Social-Emotional Growth: Supports emotional regulation, independence, and positive interactions.
- ▶ Family Engagement: Caregivers receive guidance, resources, and strategies to extend learning beyond visits.



# Center-Based Preschool

A licensed center-based preschool is an early childhood education program that meets state-mandated requirements to ensure the safety, well-being, and developmental growth of children. These preschools are typically designed for children ages 3 to 5 and focus on preparing them for kindergarten by fostering cognitive, social-emotional, and physical skills in a structured learning environment.

To be licensed, preschools must follow state guidelines regarding staff qualifications, curriculum standards, health and safety protocols, and caregiver-to-child ratios. They are regularly inspected to ensure compliance, giving families peace of mind about the quality and safety of the program. Licensed preschools often offer a mix of play-based and academic activities that encourage curiosity, creativity, and collaboration, setting a strong foundation for lifelong learning.

## Center-Based Preschool Programs include:

### ► **Head Start** (Federally Funded)

Head Start is a federally funded preschool program designed for children ages 3 to 5 from low-income families. It focuses on preparing children for kindergarten by supporting their early learning, social-emotional development, and school readiness. The program uses a comprehensive approach that includes education, health screenings, nutritious meals, and family support services.

Head Start emphasizes whole-child development, ensuring that children have the cognitive, emotional, and physical skills they need to succeed in school. The program also engages families as partners in their child's education and overall well-being.

In the Char-Em ISD region, you can find Head Start classrooms in Alanson, Boyne City, Charlevoix, East Jordan, Pellston, and Petoskey.

### ► **Early Head Start** (Federally Funded)

Early Head Start serves infants, toddlers (birth to age 3), and pregnant women from low-income families. This program focuses on the critical early years of a child's development, providing tailored support in areas like early learning, health, and parent-child bonding.

Early Head Start offers home-based or center-based services, which include developmental screenings, health and nutrition support, and guidance for parents. For pregnant women, the program provides prenatal care, education, and resources to ensure healthy pregnancies and early development. The goal is to build a strong foundation during a child's first years, setting them up for long-term success.

## Center-Based Preschool *(continued)*

### ► **Great Start Readiness Program (State Funded)**

The Great Start Readiness Program (GSRP) is Michigan's state-funded preschool program for 4-year-old children. It is designed to prepare children for success in kindergarten and beyond by focusing on their academic, social-emotional, and developmental growth.

GSRP is specifically intended for families who meet certain income or eligibility criteria, ensuring that children who may benefit most from early educational opportunities can access high-quality preschool at little to no cost. The program features a research-based curriculum, certified teachers, and small class sizes, providing children with personalized attention and engaging learning experiences.

Through play-based and structured activities, GSRP helps children develop critical thinking, problem-solving, communication, and social skills while fostering a love for learning. It's a proven program that gives children the tools and confidence to thrive in their educational journey.

We currently have 27 Great Start Readiness classrooms and 3 GSRP/Headstart combination classrooms in Charlevoix, Emmet, and northern Antrim Counties.

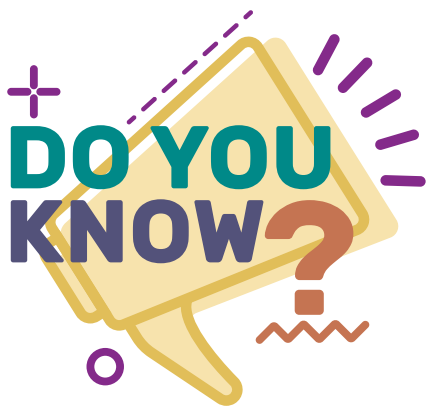
### ► **Strong Beginnings (State Funded)**

The Strong Beginnings Program is a Michigan state-funded pilot program designed to provide high-quality preschool education to 3-year-old children. This initiative builds on the success of Michigan's Great Start Readiness Program (GSRP) for 4-year-olds by focusing on earlier intervention to support school readiness and long-term success.

Strong Beginnings emphasizes social-emotional development, recognizing that skills like self-regulation, relationship building, and emotional resilience are critical for young children. The program uses a research-based curriculum tailored to 3-year-olds, with activities that encourage exploration, creativity, and foundational learning.

The program also addresses the needs of families by offering resources, support services, and opportunities for parental involvement. By providing two consecutive years of preschool (Strong Beginnings for 3-year-olds followed by GSRP for 4-year-olds), the initiative aims to give children a stronger foundation for academic achievement, social growth, and lifelong learning.

We currently have 2 Strong Beginnings classrooms in Charlevoix, Emmet, and northern Antrim Counties.



## What is a License Exempt Provider?

Finding appropriate child care can be difficult for families. Especially when they have special circumstances such as needing non-traditional care hours. **License Exempt Providers** can help address many of these difficulties. Providers are adults who care for children in either their home (family related providers) or in the child's home (unrelated providers). Providers are required to complete a one-time License Exempt Provider Preservice Training and an annual Health and Safety refresher course registered through MiRegistry.

This type of care is provided by family, friends, and neighbors who have applied and are enrolled through the Child Development and Care program. To learn more, call 1-866-990-3227.



# Great Start to Quality's Focus on Continuous Improvement

Finding the right child care program can be challenging for parents, but Great Start to Quality (GSQ) helps make the process easier. GSQ allows families to search for licensed, high-quality child care and preschool programs. These programs are essential for children's development, as 90% of brain growth occurs by age five. Participating programs are committed to improving their quality, and families can see where each program stands in its quality improvement journey, marked by one of five levels.

GSQ evaluates and supports early care and education programs throughout Michigan. They work to improve program quality and provide families with the information they need to select the best option for their child. Programs are encouraged to grow and improve continuously through resources, coaching, and guidance.

In the past, GSQ used a 1- to 5-star rating system to evaluate programs. While helpful for comparisons, this system didn't give providers clear guidance on how to improve, leaving many programs stuck at the same level. The new approach focuses on continuous improvement, where providers work with GSQ staff to identify strengths, set goals, and take actionable steps to enhance quality. Providers receive personalized support, ongoing feedback, and resources tailored to their unique needs, with an emphasis on meeting children's needs and fostering their growth.

Families still have access to detailed information about program quality but now benefit from a more dynamic system that shows how programs are actively working to improve. This ensures children receive the best possible care and education. By shifting the focus from star ratings to growth and development, GSQ supports providers in offering top-quality care while helping families make informed decisions, ensuring every child in Michigan gets a strong start!





*This icon is located under each provider listing. Click it to access their Great Start to Quality Online Profile and view their GSQ Quality Level.*



# The Path to Preschool

## **Preschool Application and Enrollment Process for State and Federally Funded Programs (Head Start, Early Head Start, GSRP, and Strong Beginnings)**

To be considered for free preschool, families need to complete the free preschool pre-application. We encourage families of all income levels to apply—you might be surprised at what you qualify for or with spaces that are available even if you don't meet all of the requirements. Don't miss out on the chance to explore all of the opportunities for your child!

Families complete the pre-application form providing demographic information and program interest. Next, a Recruitment person from Head Start or Char-Em ISD contacts the family within 10 business days to complete the preschool application. At that time, families can ask questions and learn more about their preschool options during this interaction. Families also learn about program eligibility during this interview process.

The application is then put on a waitlist for the program that the family selected as their first choice. A collaborative meeting between Head Start and Char-Em ISD will take place in late May/early June to begin the enrollment process for Head Start, Great Start Readiness, and Strong Beginnings classrooms.

Enrollment into a tuition-free preschool program is determined based on various criteria including:

- Child's age
- Family income
- Program availability
- Program preference of the family

Enrollment begins in June and continues through the summer or as openings are available. Head Start's enrollment focus is on children at or below 100% of the federal poverty level. Some spaces above 100% of the federal poverty level are available for families to attend Head Start. Great Start Readiness Programs begin enrollment with families with the lowest income and work upward. Remember, families of all income levels are encouraged to apply for FREE preschool—you may be amazed by the programs you qualify for or the spaces available, even if you don't meet every requirement.

## Preschool Application and Enrollment Process for All Other Programs

Families interested in applying for other preschool programs are encouraged to contact those programs directly. Contact information is available in this guide and on the [Great Start to Quality](#) website.

**Apply for  
FREE Preschool here!**

We encourage families of all income levels to complete the FREE Preschool Application.

You may be surprised by the programs you qualify for or the available spots, even if you don't meet all of the requirements.

Don't miss out on the chance to explore all of the opportunities for your child!



# Need Help Paying for Child Care?

## Child Development and Care (CDC) Program

For many families, the cost of safe, quality child care can affect the family budget. The Child Development and Care (CDC) Program may offer a scholarship for child care services for families when the parent is not able to provide child care. Families can apply for CDC assistance, and providers may be eligible to care for scholarship-eligible children in their care or program. The most up to date information about becoming eligible to care for scholarship-eligible children is available in the Child Development and Care Handbook.

The CDC Scholarship in Michigan provides payment assistance to families for child care costs.

### Eligibility

Families can check their eligibility using the [eligibility calculator](#) or by viewing the Income Eligibility Scale on page five of the [CDC Scholarship Handbook for Parents](#).

### Application

Families can apply online at [newmibridges.michigan.gov](http://newmibridges.michigan.gov) or by submitting a paper application at their local Michigan Department of Health and Human Services (MDHHS) office.

### Documents

Applicants will need to provide documents such as birth certificates, social security cards, state ID cards, driver licenses, or passports. They will also need to provide documents that show their income and expenses, like bank statements and proof of rent.

### Decision

Families will generally receive a decision on their eligibility within 30 calendar days.

## Conference

An MDHHS specialist will contact the family to set up a conference to go over the application.

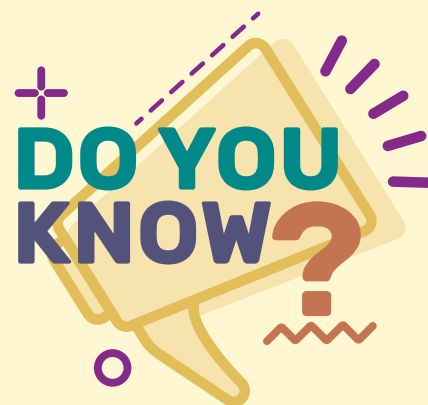
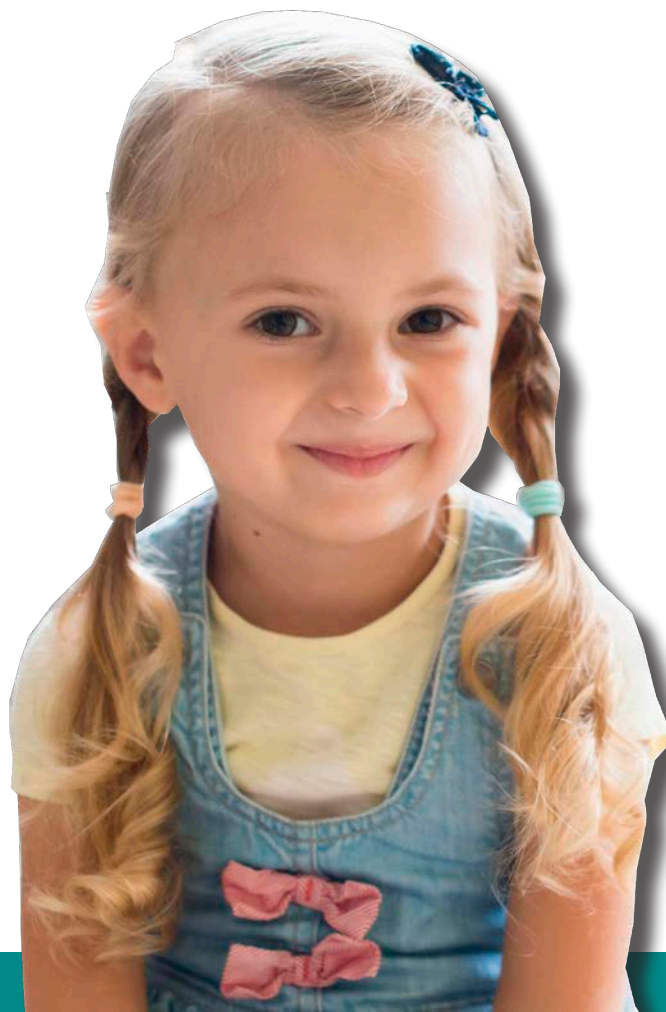
## Provider verification

A CDC Provider Verification (DHS 4025) form must be completed and submitted to the local MDHHS office to verify the child care provider.

## Reimbursement

The Department pays part of the cost of child care for approved families. You can find a program that participates in CDC payments by visiting [www.greatstarttoquality.org](http://www.greatstarttoquality.org).

Apply for CDC



*In Michigan, some people commonly refer to child care assistance as 'DHS' or 'DHHS' funding. However, the correct name for this program is the Child Development and Care (CDC) Program. The terms 'DHS' and 'DHHS' is widely used because the Department of Health and Human Services handles the applications and approvals. Despite this, the official name remains CDC, and it should be referred to as such when discussing child care assistance.*

# Michigan's Universal Preschool for All Four-Year-Olds

Michigan is working toward providing free preschool for all four-year-olds through a Universal Preschool program. This plan aims to make high-quality early education available to every four-year-old, regardless of family income. The program builds on existing state-funded preschool efforts like the Great Start Readiness Program (GSRP) and is expected to roll out in stages over the next few years. Full implementation is projected by 2027.

## **Where We Are in the Process**

Right now, Michigan is expanding access to preschool by increasing funding and support for programs like GSRP. This includes adding more classrooms, training teachers, and ensuring families know how to apply. Efforts are focused on reaching under-served areas where families might have limited access to affordable preschool options.

## **How Universal Preschool Will Work**

The Universal Preschool program will allow all four-year-olds in Michigan to attend a preschool program at no cost. Families will be able to choose between school-based programs, center-based child care providers, or other licensed preschool providers in their area. The state will fund these programs to ensure they meet quality standards and provide the best care and education for children.

## **Current Efforts to Support Universal Preschool**

- **Expanded Access:** Michigan has already added funding to open more GSRP classrooms, ensuring more children have access to preschool now.
- **Teacher Training:** Programs are working to train and hire more qualified teachers to meet the demand as preschool access grows.
- **Awareness Campaigns:** Families are being encouraged to apply for preschool and learn about the benefits of early education through community outreach and informational resources.

## **Why This Matters**

Research shows that high-quality preschool programs prepare children for success in school and beyond. By offering free preschool to all four-year-olds, Michigan is making an investment in its youngest learners and their futures. This program will ensure every child has the opportunity to build a strong foundation for learning and development.

**Stay tuned for updates as Michigan moves closer to making Universal Preschool a reality for all four-year-olds!**



keep clean  
wash brush teeth



# ALANSON

## Home-Based CHILD CARE

### ▲ Amanda Osier

8177 Bluebird Lane, Alanson  
231.384.1245



Contact Name	Amanda Osier
Email	amandalynn_23@hotmail.com
Days/Hours	Monday - Friday / 7:30 a.m. - 5 p.m.
Ages Served	Birth to Age 17
Meals Provided	Yes. Breakfast, lunch, and afternoon snack provided.
Schedule Types	<input checked="" type="checkbox"/> Full Time <input checked="" type="checkbox"/> Drop In/Hourly <input checked="" type="checkbox"/> After School
Transportation Provided	No
GSQ Quality Level	■ Enhancing Quality-Validated
Fees / Funding	This provider accepts CDC. Please contact them for rates. <b>Apply for CDC here!</b>



## Michelle Greenacre

5015 Lakeview Lane, Alanson

231.548.2428



Contact Name	Michelle Greenacre
Email	michelledaycare93@gmail.com
Days/Hours	Monday - Friday, 7 a.m. - 5:30 p.m.
Ages Served	Birth to Age 12
Meals Provided	Yes. Breakfast, lunch, dinner, and snacks provided.
Schedule Types	<input checked="" type="checkbox"/> Full Time <input checked="" type="checkbox"/> After School
Transportation Provided	No
GSQ Quality Level	■ Enhancing Quality
Fees / Funding	This provider accepts CDC. Please contact them for rates. <b>Apply for CDC here!</b>

## Carrie Swadling

6839 Honeysette, Alanson

231.548.2253



Contact Name	Carrie Swadling
Email	carrieswadling@yahoo.com
Days/Hours	Monday - Friday, 7 a.m. - 5:30 p.m.
Ages Served	Birth to Age 12
Meals Provided	Yes. Breakfast, lunch, and snacks provided. Dietary preferences available.
Schedule Types	
Transportation Provided	No
GSQ Quality Level	■ Maintaining Health & Safety
Fees / Funding	This provider accepts CDC. Please contact them for rates. <b>Apply for CDC here!</b>

# ALANSON

## Home-Based PRESCHOOL

### ▲ NMCAA Home-Based Headstart Preschool

231.548.2261



Contact Name	Tresha Schiemann
Email	tschiemann@nmcaa.net
Days/Hours	Varies
Ages Served	Ages 3 - 5 years
Meals Provided	No
Schedule Types	<input checked="" type="checkbox"/> One Day/Week
Transportation Provided	No
Fees / Funding / Apply	This program is FREE! <b>APPLY HERE!</b>

NMCAA offers a high-quality licensed home-based Head Start preschool program for children ages 3 to 5, right in the comfort of their own homes. Designed to support kindergarten readiness, this unique program provides weekly visits from a certified preschool teacher, focusing on building essential cognitive, social-emotional, and physical skills through engaging, play-based learning experiences. For families who qualify, Head Start provides additional comprehensive services, including:

- ▶ Education & School Readiness.
- ▶ Structured learning experiences to prepare for kindergarten.
- ▶ Health & Nutrition – Health screenings and nutritious meal support.
- ▶ Family Support Services – Connecting families to community resources and programs.

Our home-based preschool program is committed to providing accessible, high-quality early childhood education that nurtures young learners and supports families.

#### Program Highlights:

- ▶ One-on-One Learning: Personalized, developmentally appropriate lessons tailored to each child's needs.
- ▶ School Readiness: Activities designed to enhance early literacy, math, problem-solving, and motor skills.
- ▶ Social-Emotional Growth: Supports emotional regulation, independence, and positive interactions.
- ▶ Family Engagement: Caregivers receive guidance, resources, and strategies to extend learning beyond visits.



# ALANSON

## Center-Based PRESCHOOL

### ▲ NMCAA Preschool - Headstart

7400 North Street, Alanson

231.548.2261



Contact Name	Tresha Schiemann
Email	tschiemann@nmcaa.net
Days/Hours	Monday - Thursday, 8 a.m. - 3 p.m.
Ages Served	Ages 2 years 9 months - 5 years
Meals Provided	Yes. Breakfast, lunch, and snacks provided. USDA food Program Member. Dietary preferences available.
Schedule Types	<input checked="" type="checkbox"/> Full Time
Transportation Provided	No
GSQ Quality Level	■ Demonstrating Quality
Fees / Funding / Apply	This program is FREE! <b>APPLY HERE!</b>

Headstart is a federally funded preschool program that prepares children for success in school and beyond by focusing on the whole child—socially, emotionally, physically, and cognitively. Through play-based learning and hands-on activities, children explore, discover, and learn at their own pace. Our caring, qualified teachers create a warm, welcoming environment where children feel safe, valued, and empowered. Using research-based curriculum and assessment tools, they provide individualized attention, fostering academic and emotional growth. Family involvement is key to a child's success, so we encourage active participation through parent-teacher conferences, workshops, and family events. These opportunities strengthen the home to school connection, creating a supportive and enriching learning experience.

## Stretch Kindergarten Extended - GSRP

7400 North Street, Alanson

231.548.2261



<b>Contact Name</b>	Crystal White
<b>Email</b>	cwhite@alansonvikings.net
<b>Days/Hours</b>	Monday - Thursday, 8 a.m. - 2:45 p.m.
<b>Ages Served</b>	Ages 3 - 5 years
<b>Meals Provided</b>	Yes. Breakfast, lunch, and snacks provided. USDA food Program Member.
<b>Schedule Types</b>	<input checked="" type="checkbox"/> Full Time
<b>Transportation Provided</b>	No
<b>GSQ Quality Level</b>	<input checked="" type="checkbox"/> Enhancing Quality
<b>Fees / Funding / Apply</b>	This program is FREE! <b>APPLY HERE!</b>

Stretch Kindergarten Extended is a Great Start Readiness Program (GSRP). The GSRP is Michigan's free PreK program for eligible four-year-olds. Ranked #1 in the U.S., it's a safe place where children learn how to get along with others, share, take turns, and make friends. Math, reading, and thinking skills are taught every day through fun, hands-on activities. GSRP will help make sure your child is ready for kindergarten and beyond.



# BEAVER ISLAND

## Center-Based PRESCHOOL

### ▲ Beaver Island Community School - Preschool

37895 Kings Highway, Beaver Island

231.448.2744



Contact Name	Wil Cwikiel
Email	wilc@beaverisland.k12.mi.us
Days/Hours	
Ages Served	Ages 3 year 6 months - 6 years
Meals Provided	
Schedule Types	
Transportation Provided	
GSQ Quality Level	■ Maintaining Health & Safety
Fees / Funding	Please contact this provider for rates.



# BOYNE CITY

## Home-Based CHILD CARE

### Happy Hearts Daycare

503 Spring Street, Boyne City

231.582.2496



Contact Name	Melissa Casper
Email	Missycasper@yahoo.com
Days/Hours	Monday - Thursday, 7:30 a.m. - 5:30 p.m.
Ages Served	Ages 12 Weeks to 8 Years
Meals Provided	Yes. Organic breakfast, lunch, and snacks provided. Dietary preferences available. USDA Food Program Member.
Schedule Types	<input checked="" type="checkbox"/> Full Time <input checked="" type="checkbox"/> Part Time <input checked="" type="checkbox"/> Drop In/Hourly
Transportation Provided	No
GSQ Quality Level	■ Demonstrating Quality
Fees / Funding	This provider accepts CDC. Please contact them for rates. <b>Apply for CDC here!</b>



## Lake Place Childcare

324 Court Street, Boyne City

231.753.9881



Contact Name	Jessica Castiglione
Email	jcastigl4@gmail.com
Days/Hours	Tuesday - Friday, 7:30 a.m.- 5:30 p.m.
Ages Served	Birth to Age 17
Meals Provided	Yes. Breakfast, morning snack, lunch, and afternoon snack are all provided.
Schedule Types	<input checked="" type="checkbox"/> Full Time <input checked="" type="checkbox"/> Drop In/Hourly
Transportation Provided	No
GSQ Quality Level	■ Maintaining Health & Safety
Fees / Funding	This provider accepts CDC. Please contact them for rates. <b>Apply for CDC here!</b>

As a family childcare provider, my goal is to provide a safe and happy place for children where they can learn and grow physically, emotionally, intellectually, and socially at their own pace. I believe children learn through play and exploration and benefit from a child lead environment where they are free to learn about themselves in a safe environment. Activities and materials will be offered which stimulate sensory motor development, language development and social interaction. The development of strong self-esteem is also a major goal. I've been working with young children since 2003, hold a Master's degree in Early Childhood Education and can assist with any questions or concerns you have while your child is enrolled and even after they leave. I love to make strong connections with families and keep in touch after their children go to school.

## Sweet Apple Childcare

1016 South Lake Street, Boyne City

231.675.3301



Contact Name	Kurstin Stevens
Email	sweetapplechildcare@outlook.com
Days/Hours	Monday - Friday, 7:30a.m. - 5:30 p.m.
Ages Served	Birth to Age 12
Meals Provided	Yes. Breakfast, lunch, and snacks provided. (ACD Food Program member)
Schedule Types	<input checked="" type="checkbox"/> Full Time <input checked="" type="checkbox"/> Part Time
Transportation Provided	No
GSQ Quality Level	■ Enhancing Quality-Validated
Fees / Funding	This provider accepts CDC. Please contact them for rates. <b>Apply for CDC here!</b>

My mission is to provide nurturing care that meets the needs of each child to develop their physical, social, and emotional abilities. I have created a safe place for children to express themselves and live out their land of make believe. My space is in my family home and an infant room. My space is kept clean and suitable for all the ages I serve. I have a safe, fenced-in backyard for children to freely run and play.

# BOYNE CITY

## Center-Based CHILD CARE

### ▲ Boyne Country Kids

930 Brockway Street, Boyne City  
231.330.8710



Contact Name	Cola Hill
Email	boynecountrykids@gmail.com
Days/Hours	Monday - Friday, Before School 7 - 8 a.m., After School 3 - 6 p.m., Summer 7a.m. - 6 p.m.
Ages Served	Ages 5 - 12 years (We will accept children ages 4 years 9 months if they are enrolled in Kindergarten)
Meals Provided	Food is provided by parent/guardian for half days of school and full days of care. We do provide an afternoon snack.
Schedule Types	<input checked="" type="checkbox"/> Full Time <input checked="" type="checkbox"/> Part Time <input checked="" type="checkbox"/> Before School <input checked="" type="checkbox"/> After School
Transportation Provided	No
GSQ Quality Level	■ Enhancing Quality-Validated
Fees / Funding	This provider accepts CDC. Please contact them for rates. <b>Apply for CDC here!</b>

Boyne Country Kids is more than just daycare. During the school year, we provide tutoring and homework assistance to help free-up your already short-on-time evenings. In addition, we have recently added several club segments to our after-school time. Clubs run for two weeks and include music, pen pals, chess, legos, pokemon, crochet, and many more! In the summer months we strive to bring a variety of hands-on learning experiences for your child. All this in a structured, safe, and friendly environment.

Our goal is to provide children with a variety of activities to foster individual interests, while giving students time to interact with peers under the careful supervision of educated professionals. In doing so, our staff will provide a caring, safe, and stimulating environment for your child. It is important that we work together as partners and that we all feel comfortable discussing your child's needs. Communication is the key; please feel free to discuss your concerns with any staff member at any time.

BCK does not discriminate against children with special needs. Any necessary accommodations will be made to the best of our ability. A plan for accommodating each child with special needs will be determined collaboratively between BCK and the child's family during registration (or at least prior to the child's first day attending). We respect families' diverse cultural practices and hope that your child (and family) will feel included in all aspects of Boyne Country Kids. It is our hope that you will share aspects of your family's culture with us like music, materials, practices, and family customs. At BCK, everyone is welcome, and we believe in an environment that reflects community and family positively. Thank you for your interest in finding the best possible care for your child! We look forward to working with your child and family.



# BOYNE CITY

## Home-Based PRESCHOOL

### ▲ NMCAA Home-Based Headstart Preschool

231.548.2261



Contact Name	Tresha Schiemann
Email	tschiemann@nmcaa.net
Days/Hours	Varies
Ages Served	Ages 3 - 5 years
Meals Provided	No
Schedule Types	<input checked="" type="checkbox"/> One Day/Week
Transportation Provided	No
Fees / Funding / Apply	This program is FREE! <b>APPLY HERE!</b>

NMCAA offers a high-quality licensed home-based Head Start preschool program for children ages 3 to 5, right in the comfort of their own homes. Designed to support kindergarten readiness, this unique program provides weekly visits from a certified preschool teacher, focusing on building essential cognitive, social-emotional, and physical skills through engaging, play-based learning experiences. For families who qualify, Head Start provides additional comprehensive services, including:

- ▶ Education & School Readiness
- ▶ Structured learning experiences to prepare for kindergarten.
- ▶ Health & Nutrition – Health screenings and nutritious meal support.
- ▶ Family Support Services – Connecting families to community resources and programs.

Our home-based preschool program is committed to providing accessible, high-quality early childhood education that nurtures young learners and supports families.

#### Program Highlights:

- ▶ One-on-One Learning: Personalized, developmentally appropriate lessons tailored to each child's needs.
- ▶ School Readiness: Activities designed to enhance early literacy, math, problem-solving, and motor skills.
- ▶ Social-Emotional Growth: Supports emotional regulation, independence, and positive interactions.
- ▶ Family Engagement: Caregivers receive guidance, resources, and strategies to extend learning beyond visits.



# BOYNE CITY

## Center-Based PRESCHOOL

### Boyne City Preschool

1040 Roosevelt Street, Boyne City  
231.548.7131



Contact Name	Jaimie Shiers
Email	bcpreschool@att.net
Days/Hours	Monday - Friday, 7:30 a.m. - 5:30 p.m.
Ages Served	Ages 2 years 6 months - 6 years
Meals Provided	Yes. Breakfast, lunch, and snacks provided. USDA food Program Member. Dietary preferences available.
Schedule Types	<input checked="" type="checkbox"/> Full Time <input checked="" type="checkbox"/> Part Time
Transportation Provided	No
GSQ Quality Level	■ Enhancing Quality
Fees / Funding	This provider accepts CDC. Please contact them for rates. <b>Apply for CDC here!</b>

Come grow with us! We currently have a three year old classroom and four year old preschool program. We offer full days and half days with a nutritious food program allowing us to serve breakfast, lunch and afternoon snack. There is a two day minimum attendance policy. We offer a loving, fun, nurturing staff.



## Concord Academy Boyne - GSRP

401 East Dietz Road, Boyne City

231.582.0194



Contact Name	Rebekah Leist or Shelby Thrush
Email	rleist@concordboyne.org or sthrush@concordboyne.org
Days/Hours	Monday - Friday, 8 a.m. - 3:10 p.m.
Ages Served	Serving children who turn 4 by Dec. 1
Meals Provided	Yes. Breakfast, lunch, and snacks provided.
Schedule Types	<input checked="" type="checkbox"/> Full Time
Transportation Provided	Yes
GSQ Quality Level	■ Demonstrating Quality
Fees / Funding / Apply	This program is FREE! <b><u>APPLY HERE!</u></b>

Our preschool program is a nurturing and dynamic environment designed to foster early learning and development in young children. We currently offer one Great Start Readiness Program (GSRP) classroom, which serves children who turn four years old on or before December 1st. Our program provides a comprehensive approach to early education, blending structured activities with creative play to promote social, emotional, and cognitive growth. Our experienced and caring educators use a research-based curriculum to prepare children for kindergarten and lifelong learning.

We understand that a well-balanced day includes more than academics, which is why we also focus on meeting the nutritional needs of our students. Each child receives a healthy breakfast, lunch, and snack daily, ensuring they have the energy and focus to thrive in our classroom.

To make our program accessible for families, we offer transportation services, providing a safe and convenient way for children to attend school. We believe in creating a warm, inclusive community where every child feels valued and supported. Join us in building a strong foundation for your child's future!



# BOYNE CITY

## Center-Based PRESCHOOL

### ▲ Early Learners Program (Three-Year-Old Program)

321 S. Park Street, Boyne City

231.439.8178



Contact Name	Laurel Jewett
Email	bcpreschool@att.net
Days/Hours	Monday - Thursday, 8 a.m. - 3 p.m. Extended care is available Monday - Thursday, 3 p.m. - 5:30 p.m. and Fridays from 8 a.m. - 5:30 p.m.
Ages Served	Ages 2 years 6 months to age 3
Meals Provided	Yes. Breakfast, lunch, and snacks provided. Children can also bring their own lunch.
Schedule Types	<input checked="" type="checkbox"/> Full Time <input checked="" type="checkbox"/> Part Time <input checked="" type="checkbox"/> Before School <input checked="" type="checkbox"/> After School
Transportation Provided	No
GSQ Quality Level	■ Demonstrating Quality
Fees / Funding	This provider accepts CDC. Please contact them for rates. <b>Apply for CDC here!</b>

Early Learners is a renowned program that offers social and academic readiness for children. The staff understands the importance of daily schedules to help build a foundation and prepare your child for kindergarten while doing it in a fun, nurturing environment. Some daily activities include circle time, story-time, music, free choice, outdoor play, gym, and lunch. All the while children are learning classroom routines and socialization with peers. Children's play is the best foundation for success in school. Learning to play and work side-by-side with their peers helps to develop a variety of skills that are necessary for children to learn to read and write which leads to success in math and science. While at Early Learners, children learn many of the things that will lead to success as they transition to elementary school.

We have 2 tuition based **three-year-old classrooms** that offer part-time and full-time spots.

## Early Learners Program (Strong Beginnings Three-Year-Old Program)

321 S. Park Street, Boyne City  
231.439.8178



Contact Name	Laurel Jewett
Email	bcpreschool@att.net
Days/Hours	Monday - Thursday, 8 a.m. - 3 p.m. Extended care is available Monday - Thursday, 3 p.m. - 5:30 p.m. and Fridays from 8 a.m. - 5:30 p.m.
Ages Served	Age 3 by December 1 of that school year.
Meals Provided	Yes. Breakfast, lunch, and snacks provided. Children can also bring their own lunch.
Schedule Types	<input checked="" type="checkbox"/> Full Time <input checked="" type="checkbox"/> Before School <input checked="" type="checkbox"/> After School
Transportation Provided	No
GSQ Quality Level	■ Demonstrating Quality
Fees / Funding / Apply	This program is FREE! <b>APPLY HERE!</b>

Early Learners is a renowned program that offers social and academic readiness for children. The staff understands the importance of daily schedules to help build a foundation and prepare your child for kindergarten while doing it in a fun, nurturing environment. Some daily activities include circle time, story-time, music, free choice, outdoor play, gym, and lunch. All the while children are learning classroom routines and socialization with peers. Children's play is the best foundation for success in school. Learning to play and work side-by-side with their peers, helps to develop a variety of skills that are necessary for children to learn to read and write which leads to success in math and science. While at Early Learners, children learn many of the things that will lead to success as they transition to elementary school.

**Strong Beginnings** is the third three-year-old program free for eligible children. It is Monday-Thursday from 8 a.m. to 3 p.m.. This is a pilot program ran by the State of Michigan. Our program offers before-school care (7:30 to 8 a.m.) and after-school care (3 to 5:30 p.m.). We have limited space on Fridays for child care. We also have a tuition based summer program.



## ▲ Early Learners Program (GSRP Four-Year-Old Program)

321 S. Park Street, Boyne City  
231.439.8178



Contact Name	Laurel Jewett
Email	bcpreschool@att.net
Days/Hours	Monday - Thursday, 8 a.m. - 3 p.m. Extended care is available Monday - Thursday, 3 p.m. - 5:30 p.m. and Fridays from 8 a.m. - 5:30 p.m.
Ages Served	Age 4 by December 1 of that school year.
Meals Provided	Yes. Breakfast, lunch, and snacks provided. Children can also bring their own lunch.
Schedule Types	<input checked="" type="checkbox"/> Full Time <input checked="" type="checkbox"/> Before School <input checked="" type="checkbox"/> After School
Transportation Provided	No
GSQ Quality Level	■ Demonstrating Quality
Fees / Funding / Apply	This program is FREE! <b><a href="#">APPLY HERE!</a></b>

Early Learners is a renowned program that offers social and academic readiness for children. The staff understands the importance of daily schedules to help build a foundation and prepare your child for kindergarten while doing it in a fun, nurturing environment. Some daily activities include circle time, story-time, music, free choice, outdoor play, gym, and lunch. All the while children are learning classroom routines and socialization with peers. Children's play is the best foundation for success in school. Learning to play and work side-by-side with their peers, helps to develop a variety of skills that are necessary for children to learn to read and write which leads to success in math and science. While at Early Learners, children learn many of the things that will lead to success as they transition to elementary school.

All **four-year-old children** get to attend Early Learners for free Monday-Thursday from 8 a.m. to 3 p.m. Our program offers before-school care (7:30 to 8 a.m.) and after-school care (3 to 5:30 p.m.). We have limited space on Fridays for child care. We also have a tuition based summer program.



# BOYNE FALLS

## Home-Based PRESCHOOL

### ▲ NMCAA Home-Based Headstart Preschool

231.548.2261



Contact Name	Tresha Schiemann
Email	tschiemann@nmcaa.net
Days/Hours	Varies
Ages Served	Ages 3 - 5 years
Meals Provided	No
Schedule Types	<input checked="" type="checkbox"/> One Day/Week
Transportation Provided	No
GSQ Quality Level	■ Demonstrating Quality
Fees / Funding / Apply	This program is FREE! <b>APPLY HERE!</b>

NMCAA offers a high-quality licensed home-based Head Start preschool program for children ages 3 to 5, right in the comfort of their own homes. Designed to support kindergarten readiness, this unique program provides weekly visits from a certified preschool teacher, focusing on building essential cognitive, social-emotional, and physical skills through engaging, play-based learning experiences. For families who qualify, Head Start provides additional comprehensive services, including:

- ▶ Education & School Readiness
- ▶ Structured learning experiences to prepare for kindergarten.
- ▶ Health & Nutrition – Health screenings and nutritious meal support.
- ▶ Family Support Services – Connecting families to community resources and programs.

Our home-based preschool program is committed to providing accessible, high-quality early childhood education that nurtures young learners and supports families.

#### Program Highlights:

- ▶ One-on-One Learning: Personalized, developmentally appropriate lessons tailored to each child's needs.
- ▶ School Readiness: Activities designed to enhance early literacy, math, problem-solving, and motor skills.
- ▶ Social-Emotional Growth: Supports emotional regulation, independence, and positive interactions.
- ▶ Family Engagement: Caregivers receive guidance, resources, and strategies to extend learning beyond visits.

# BOYNE FALLS

## Center-Based PRESCHOOL

### ▲ Boyne Falls Preschool - GSRP

01662 M-75 Street, Boyne Falls  
231.549.2211, Ext. 30058



Contact Name	Mr. Mitchell Klooster
Email	mklooster@boynefalls.org
Days/Hours	Monday - Thursday, 7:45 a.m. - 3 p.m. (Full day care is offered on Friday from 7:45 a.m. to 5 p.m. and after-school care is available everyday until 5 p.m.)
Ages Served	Age 4 by December 1 of that school year.
Meals Provided	Yes. Breakfast, lunch, and snacks are provided. Whenever possible, we offer produce grown on-site, as well as local fruits, vegetables, meats, and organic options.
Schedule Types	<input checked="" type="checkbox"/> Full Time <input checked="" type="checkbox"/> After School
Transportation Provided	Yes
GSQ Quality Level	■ Demonstrating Quality
Fees / Funding / Apply	This program is FREE! <b>APPLY HERE!</b>

Boyne Falls Preschool offers two GSRP classrooms for children turning four by December 1. Our qualified team utilizes a research-based curriculum in thoughtfully designed spaces. Breakfast, lunch, and snacks are provided. Three-year-olds may enroll on a case-by-case basis. For inquiries, call Mr. Mitchell at 231.549.2211, ext. 30058.



# CENTRAL LAKE

## Center-Based CHILD CARE

### ▲ Central Lake Public Schools -

#### Infant and Toddler Care, Aftercare Program, and Summer Camps

8190 West State Street, Central Lake

231.544.3141



Contact Name	Stephanie Stedman
Email	sstedman@centrallake.org
Days/Hours	Monday - Friday / 7:30 a.m. - 5:30 p.m.
Ages Served	Birth to Age 17
Meals Provided	Yes. Breakfast, lunch, and afternoon snack provided. USDA Food Program Member.
Schedule Types	<input checked="" type="checkbox"/> Full Time <input checked="" type="checkbox"/> Part Time <input checked="" type="checkbox"/> Before School <input checked="" type="checkbox"/> After School
Transportation Provided	Yes
GSQ Quality Level	■ Enhancing Quality
Fees / Funding	This provider accepts CDC. Please contact them for rates. <b>Apply for CDC here!</b>

Central Lake Early Childhood Programs envisions that families and children in Central Lake have access to high quality, affordable programming. We are a tight knit community dedicated to providing play based, developmentally appropriate curriculum, embedded professional development, and qualified early childhood educators. Through partnerships and funding from the CLEO Purdy Endowment Fund, Head Start, and the Great Start Readiness Program (GSRP) we offer infant, toddler, preschool, and school-aged programming.

**Infant and Toddler classrooms** run all year long from 7:30am to 5:30pm.

During the school year, we also operate both a **Preschool and School-Age Aftercare program** beginning at 3pm and ending at 5:30pm. The summer months at CLPS Early Childhood Programs offer the opportunity for both Preschool-Aged and School-Aged students to attend **Summer Camp Programming**. Hours vary based on need and interest.



# CENTRAL LAKE

## Center-Based PRESCHOOL

### Central Lake Public Schools - 3-Year Old Head Start Collaborative

8190 West State Street, Central Lake

231.544.3141



Contact Name	Stephanie Stedman
Email	sstedman@centrallake.org
Days/Hours	Monday - Friday / 7:45 a.m. - 2:55 p.m. (Full day care is offered on Friday from 7:45 a.m. to 5:30 p.m. and after-school care is available everyday until 5:30 p.m.)
Ages Served	Ages 3 to 4 years
Accepts CDC	Yes
Meals Provided	Yes. Breakfast, lunch, and afternoon snack provided. USDA Food Program Member.
Schedule Types	<input checked="" type="checkbox"/> Full Time <input checked="" type="checkbox"/> After School
Transportation Provided	Yes
GSQ Quality Level	■ Enhancing Quality
Fees / Funding / Apply	This program is FREE! <b>APPLY HERE!</b>

Central Lake Early Childhood Programs envisions that families and children in Central Lake have access to high quality, affordable programming. We are a tight knit community dedicated to providing play based, developmentally appropriate curriculum, embedded professional development, and qualified early childhood educators. Through partnerships and funding from the CLEO Purdy Endowment Fund, Head Start, and the Great Start Readiness Program (GSRP) we offer infant, toddler, preschool, and school-aged programming.

Our two **Preschool classrooms** (Three-Year-Old/Head Start Collaborative and Four-Year-Old GSRP) follow our district school-year calendar and the hours of 7:45 a.m. to 2:55 p.m. During the school year, we also operate both a **Preschool and School-Age Aftercare** program beginning at 3 p.m. and ending at 5:30 p.m.

The summer months at CLPS Early Childhood Programs offer the opportunity for both Preschool-Aged and School-Aged students to attend **Summer Camp Programming**. Hours vary based on need and interest.

## Central Lake Public Schools - 4 Year Old GSRP

8190 West State Street, Central Lake

231.544.3141



<b>Contact Name</b>	Stephanie Stedman
<b>Email</b>	sstedman@centrallake.org
<b>Days/Hours</b>	Monday - Thursday / 7:45 a.m. - 2:55 p.m. (Full day care is offered on Friday from 7:45 a.m. to 5:30 p.m. and after-school care is available everyday until 5:30 p.m.)
<b>Ages Served</b>	Ages 3 to 4 years
<b>Accepts CDC</b>	Yes
<b>Meals Provided</b>	Yes. Breakfast, lunch, and afternoon snack provided. USDA Food Program Member.
<b>Schedule Types</b>	<input checked="" type="checkbox"/> Full Time <input checked="" type="checkbox"/> After School
<b>Transportation Provided</b>	Yes
<b>GSQ Quality Level</b>	■ Enhancing Quality
<b>Fees / Funding / Apply</b>	This program is FREE! <b><u>APPLY HERE!</u></b>

Central Lake Early Childhood Programs envisions that families and children in Central Lake have access to high quality, affordable programming. We are a tight knit community dedicated to providing play based, developmentally appropriate curriculum, embedded professional development, and qualified early childhood educators. Through partnerships and funding from the CLEO Purdy Endowment Fund, Head Start, and the Great Start Readiness Program (GSRP) we offer infant, toddler, preschool, and school-aged programming.

Our two **Preschool classrooms** (Three-Year-Old/Head Start Collaborative and Four-Year-Old GSRP) follow our district school-year calendar and the hours of 7:45 a.m. to 2:55 p.m. During the school year, we also operate both a **Preschool and School-Age Aftercare** program beginning at 3 p.m. and ending at 5:30 p.m.

The summer months at CLPS Early Childhood Programs offer the opportunity for both Preschool-Aged and School-Aged students to attend **Summer Camp Programming**. Hours vary based on need and interest.

# CHARLEVOIX

## Home-Based CHILD CARE

### ▲ Cassandra Bennett-May

209 West Antrim, Charlevoix

231.547.0979



Contact Name	Cassandra Bennett-May
Email	timmay442@charter.net
Days/Hours	Monday - Friday, 6:45 a.m. - 5:30 p.m., Saturdays 6:45 a.m. - 12 p.m.
Ages Served	Birth to Age 17
Meals Provided	Yes. Breakfast, lunch, and afternoon snack provided. USDA Food Program Member.
Schedule Types	<input checked="" type="checkbox"/> Full Time <input checked="" type="checkbox"/> Part Time <input checked="" type="checkbox"/> Drop In/Hourly
Transportation Provided	No
GSQ Quality Level	■ Maintaining Health & Safety
Fees / Funding	This provider accepts CDC. Please contact them for rates. <b>Apply for CDC here!</b>



## Danya Drost

06118 US-31 South, Charlevoix

231.547.6632



Contact Name	Danya Drost
Email	cddrost@hotmail.com
Days/Hours	Monday - Friday, 7:30 a.m. - 4:30 p.m.
Ages Served	Birth to Age 10
Meals Provided	Yes. Lunch and snacks provided.
Schedule Types	<input checked="" type="checkbox"/> Full Time <input checked="" type="checkbox"/> Part Time
Transportation Provided	No
GSQ Quality Level	<input checked="" type="checkbox"/> Maintaining Health & Safety
Fees / Funding	This provider accepts CDC. Please contact them for rates. <b>Apply for CDC here!</b>

I strive to make my daycare feel as warm and comfortable as home. Children in my care actively participate in preparing their lunches and snacks, fostering independence and life skills. They also enjoy a spacious, fenced-in backyard for outdoor play. Throughout the day, we engage in various lessons, allowing the children to help guide the direction of their learning. There's also plenty of free time for play and exploration, encouraging creativity and discovery.

## Lynette Grams

204 W. Upright Street, Charlevoix

231.547.2052



Contact Name	Lynette Grams
Email	lynettegrams@yahoo.com
Days/Hours	Available Monday and Tuesdays only from June 15 to August 30.
Ages Served	Birth to Age 17
Meals Provided	Yes. Breakfast, lunch, and snacks provided.
Schedule Types	<input checked="" type="checkbox"/> Summer Only
Transportation Provided	No
GSQ Quality Level	<input checked="" type="checkbox"/> Maintaining Health & Safety
Fees / Funding	

I am a certified Elementary Teacher who is currently working full time during the school year. I am available on Monday and Tuesday only from June 15 to August 30.

## Michelle Holecheck

09210 Major Douglas Sloan Road, Charlevoix

231.547.0682



Contact Name	Michelle Holecheck
Email	sholecheck110@gmail.com
Days/Hours	Monday -Thursday, 4:30 a.m. - 5:30 p.m., Fridays 4:30 a.m. - 2:30 p.m.
Ages Served	Birth to Age 17
Meals Provided	Yes. Breakfast, lunch, and afternoon snack provided. USDA Food Program Member.
Schedule Types	<input checked="" type="checkbox"/> Full Time <input checked="" type="checkbox"/> Part Time <input checked="" type="checkbox"/> Before School <input checked="" type="checkbox"/> After School
Transportation Provided	No
GSQ Quality Level	■ Enhancing Quality
Fees / Funding	This provider accepts CDC. Please contact them for rates. <b>Apply for CDC here!</b>

## Jennifer Pittman

05862 Barnard Road, Charlevoix

231.547.0682



Contact Name	Jennifer Pittman
Email	chxjen@hotmail.com
Days/Hours	Monday - Friday, 7:30 a.m. - 5:30 p.m.
Ages Served	Birth to Age 12
Meals Provided	Yes. Breakfast, lunch, and snacks provided. Dietary preferences available. Participates with ACD Food Program.
Schedule Types	<input checked="" type="checkbox"/> Full Time <input checked="" type="checkbox"/> Before School <input checked="" type="checkbox"/> After School
Transportation Provided	No
GSQ Quality Level	■ Enhancing Quality
Fees / Funding	This provider accepts CDC. Please contact them for rates. <b>Apply for CDC here!</b>



## Kristina Prevo

03058 Black Road, Charlevoix

231.675.0324



Contact Name	Kristina Prevo
Email	tkprevo@aol.com
Days/Hours	Monday - Friday, 6 a.m. - 5:15 p.m.
Ages Served	Ages 1 month to 12 years
Meals Provided	Yes. Breakfast, lunch, and afternoon snack provided. USDA Food Program Member.
Schedule Types	<input checked="" type="checkbox"/> Full Time <input checked="" type="checkbox"/> Part Time <input checked="" type="checkbox"/> Drop In/Hourly
Transportation Provided	No
GSO Quality Level	■ Enhancing Quality
Fees / Funding	This provider accepts CDC. Please contact them for rates. <b>Apply for CDC here!</b>



# CHARLEVOIX

## Center-Based CHILD CARE

### ▲ Little Rayders Preschool / Rayders Kids Club

108 E. Garfield Street, Charlevoix  
231.548.7131



Contact Name	Tricia Petrosky
Email	tpetrosk@rayder.net
Days/Hours	Monday - Friday, Before School Starting at 7:15 a.m. and After School Until 5 p.m.
Ages Served	Ages 3 to 11 years
Meals Provided	
Schedule Types	<input checked="" type="checkbox"/> Before School <input checked="" type="checkbox"/> After School
Transportation Provided	
GSQ Quality Level	■ Demonstrating Quality
Fees / Funding	This provider accepts CDC. Please contact them for rates. <b>Apply for CDC here!</b>

Rayder Kid's Club is a before and after school child care program provided at Charlevoix Elementary School.

### ▲ Northern Explorers Child Development Center

5475 US 31 S, Charlevoix  
231.675.2285



Contact Name	Rachel McDonough-Grogan
Email	rachel@northernexplorerscdc.com
Days/Hours	Monday - Friday, 7:30 a.m. - 5:15 p.m.
Ages Served	Birth to Age 13
Meals Provided	No. Food is provided by parent/guardian
Schedule Types	<input checked="" type="checkbox"/> Full Time <input checked="" type="checkbox"/> Part Time <input checked="" type="checkbox"/> Before School <input checked="" type="checkbox"/> After School <input checked="" type="checkbox"/> Summer Program
Transportation Provided	
GSQ Quality Level	■ Enhancing Quality-Validated
Fees / Funding	This provider accepts CDC. Please contact them for rates. <b>Apply for CDC here!</b>

Northern Explorers staff is committed to providing a safe, nurturing environment that allows children to grow through play-based learning.

## ▲ Saint Mary Pre-K / Extended Care

1005 Bridge Street, Charlevoix

231.675.2285



<b>Contact Name</b>	Amy Baldwin
<b>Email</b>	abaldwin@stmaryschoolchx.com
<b>Days/Hours</b>	Monday - Friday, 3 p.m. - 5:30 p.m.
<b>Ages Served</b>	Ages 3 to 12 years
<b>Meals Provided</b>	No. Students bring their own snack.
<b>Schedule Types</b>	<input checked="" type="checkbox"/> After School
<b>Transportation Provided</b>	No
<b>GSQ Quality Level</b>	■ Enhancing Quality
<b>Fees / Funding</b>	Please contact this provider for rates.

The Extended Care program is available to Pre-K and all school-aged children attending St. Mary School Monday through Friday during the school-year calendar with a cost of four dollars per hour per child. There is no extended care service on half days or inclement weather days when the school is closed. Families must sign up for a schedule and will be charged regardless of child's attendance.



# CHARLEVOIX

## Home-Based PRESCHOOL

### ▲ NMCAA Home-Based Headstart Preschool

231.548.2261



Contact Name	Tresha Schiemann
Email	tschiemann@nmcaa.net
Days/Hours	Varies
Ages Served	Ages 3 - 5 years
Meals Provided	No
Schedule Types	<input checked="" type="checkbox"/> One Day/Week
Transportation Provided	No
Fees / Funding / Apply	This program is FREE! <b>APPLY HERE!</b>

NMCAA offers a high-quality licensed home-based Head Start preschool program for children ages three to five, right in the comfort of their own homes. Designed to support kindergarten readiness, this unique program provides weekly visits from a certified preschool teacher, focusing on building essential cognitive, social-emotional, and physical skills through engaging, play-based learning experiences. For families who qualify, Head Start provides additional comprehensive services, including:

- ▶ Education & School Readiness
- ▶ Structured learning experiences to prepare for kindergarten.
- ▶ Health & Nutrition – Health screenings and nutritious meal support.
- ▶ Family Support Services – Connecting families to community resources and programs.

Our home-based preschool program is committed to providing accessible, high-quality early childhood education that nurtures young learners and supports families.

#### Program Highlights:

- ▶ One-on-One Learning: Personalized, developmentally appropriate lessons tailored to each child's needs.
- ▶ School Readiness: Activities designed to enhance early literacy, math, problem-solving, and motor skills.
- ▶ Social-Emotional Growth: Supports emotional regulation, independence, and positive interactions.
- ▶ Family Engagement: Caregivers receive guidance, resources, and strategies to extend learning beyond visits.



# CHARLEVOIX

## Center-Based PRESCHOOL

### Charlevoix Children's House

8700 Mercer Boulevard, Charlevoix  
231.547.5599



Contact Name	Charlevoix Children's House
Email	cchmont@gmail.com
Days/Hours	Monday - Friday, 7:30 a.m. - 4:40 p.m.
Ages Served	Ages 3 to 6 Years
Meals Provided	No. Food is provided by parent/guardian.
Schedule Types	<input checked="" type="checkbox"/> Full Time <input checked="" type="checkbox"/> Part Time <input checked="" type="checkbox"/> Before School <input checked="" type="checkbox"/> After School
Transportation Provided	No
GSQ Quality Level	■ Maintaining Health & Safety
Fees / Funding	Please contact this provider for rates.

CCH is a community of parents, teachers, and children working cooperatively to create a nurturing environment that fosters self-discipline, respect, and a true love of learning. We follow the practices of Maria Montessori. Full-time positions are available to all ages. Part-time positions are available to first year students only attending either five mornings or three full days. We offer tuition-free kindergarten. The school day runs from 8 a.m. to 3 p.m. with options for care before and after school.



## ▲ Little Rayders Preschool - 3 Year old Half Day Program

108 E. Garfield Street, Charlevoix

231.548.7131



Contact Name	Tricia Petrosky
Email	tpetrosk@rayder.net
Days/Hours	Monday - Thursday, 8:35 a.m. - 11:45 a.m. (Full day care is offered on Friday from 7:15 a.m. to 5 p.m. and after-school care is available everyday until 5 p.m.)
Ages Served	Age 3
Meals Provided	Yes. Lunch and snacks provided.
Schedule Types	<input checked="" type="checkbox"/> Full Time <input checked="" type="checkbox"/> Part Time <input checked="" type="checkbox"/> Before School <input checked="" type="checkbox"/> After School
Transportation Provided	
GSQ Quality Level	■ Demonstrating Quality
Fees / Funding	This provider accepts CDC. Please contact them for rates. <b>Apply for CDC here!</b>

The Little Rayders Preschool program for three year olds focuses on basic academic concepts with a heavy focus on social skills, cooperative play and daily living skills. Activities which encourage fine motor skill development (cutting, coloring, gluing etc.) are provided daily. Other learning activities include games, physical education, art and music exploration. Registration opens at our Open House in April. For more information contact Tricia Petrosky, Program Director, at 231-547-8143 or tpetrosk@rayder.net

## ▲ Little Rayders Preschool - GSRP 4 Year old Full Day Program

108 E. Garfield Street, Charlevoix

231.548.7131



Contact Name	Tricia Petrosky
Email	tpetrosk@rayder.net
Days/Hours	Monday - Thursday, 8:35 a.m. - 3:35 a.m. (Full day care is offered on Friday from 7:15 a.m. to 5 p.m. and after-school care is available everyday until 5 p.m.)
Ages Served	Ages 4 by Dec. 1 of that school year.
Meals Provided	Yes. Lunch and snacks provided.
Schedule Types	<input checked="" type="checkbox"/> Full Time <input checked="" type="checkbox"/> Before School <input checked="" type="checkbox"/> After School
Transportation Provided	
GSQ Quality Level	■ Demonstrating Quality
Fees / Funding	This provider accepts CDC. Please contact them for rates. <b>Apply for CDC here!</b>

The Little Rayders program for four-year-olds is designed to build kindergarten readiness skills. The curriculum we use is called Creative Curriculum. In addition to academic concepts, we continue to work on social skills and work habits as well as encouraging sharing and cooperative play with others. Activities which encourage fine motor skill development (cutting, coloring, gluing etc.) are provided daily. Other learning activities include games, physical education, art, music and pre-reading and writing developmental exercises. The preschool teachers work closely with the kindergarten teachers throughout the school year to assure a smooth transition from preschool to kindergarten.

## ▲ NMCAA Preschool Charlevoix - Head Start

108 E. Garfield Street, Charlevoix  
2231.341.6211



Contact Name	Tresha Schiemann
Email	tschiemann@nmcaa.net
Days/Hours	Monday - Thursday, 8 a.m. - 3 p.m.
Ages Served	Ages 2 years 9 months - 5 years
Meals Provided	Yes. Breakfast, lunch, and snacks provided. USDA food Program Member. Dietary preferences available.
Schedule Types	<input checked="" type="checkbox"/> Full Time
Transportation Provided	No
GSQ Quality Level	■ Demonstrating Quality
Fees / Funding / Apply	This program is FREE! <b>APPLY HERE!</b>

Headstart is a federally funded preschool program that prepares children for success in school and beyond by focusing on the whole child—socially, emotionally, physically, and cognitively. Through play-based learning and hands-on activities, children explore, discover, and learn at their own pace. Our caring, qualified teachers create a warm, welcoming environment where children feel safe, valued, and empowered. Using research-based curriculum and assessment tools, they provide individualized attention, fostering academic and emotional growth. Family involvement is key to a child's success, so we encourage active participation through parent-teacher conferences, workshops, and family events. These opportunities strengthen the home to school connection, creating a supportive and enriching learning experience.

## ▲ Northern Explorers Child Development Center - GSRP Preschool Classroom

5475 US 31 S, Charlevoix  
231.675.2285



Contact Name	Patricia Seese
Email	patricia@northernexplorerscdc.com
Days/Hours	Monday - Friday, 8:30 a.m. - 3:30 p.m. (Before and after-school care is available)
Ages Served	Children who are age 4 by December 1 of that school year.
Meals Provided	Lunch and snacks are provided.
Schedule Types	<input checked="" type="checkbox"/> Full Time <input checked="" type="checkbox"/> Before School <input checked="" type="checkbox"/> After School
Transportation Provided	No
GSQ Quality Level	■ Enhancing Quality-Validated
Fees / Funding / Apply	This program is FREE! <b>APPLY HERE!</b>

Northern Explorers staff is committed to providing a safe, nurturing environment that allows children to grow through play-based learning.

## ▲ Northern Explorers Child Development Center - 3 Year-Old Preschool Classroom

5475 US 31 S, Charlevoix  
231.675.2285



Contact Name	Rachel McDonough-Grogan
Email	rachel@northernexplorerscdc.com
Days/Hours	Monday - Friday, 8:30 a.m. - 3:30 p.m. (Before and after-school care is available)
Ages Served	Children who are age 4 by December 1 of that school year.
Meals Provided	No. Food is provided by parent/guardian
Schedule Types	<input checked="" type="checkbox"/> Full Time <input checked="" type="checkbox"/> Part Time <input checked="" type="checkbox"/> Before School <input checked="" type="checkbox"/> After School
Transportation Provided	No
GSQ Quality Level	■ Enhancing Quality-Validated
Fees / Funding	This provider accepts CDC. Please contact them for rates. <b>Apply for CDC here!</b>

Northern Explorers staff is committed to providing a safe, nurturing environment that allows children to grow through play-based learning.

## ▲ Saint Mary Pre K

1005 Bridge Street, Charlevoix  
231.675.2285



Contact Name	Amy Baldwin
Email	abaldwin@stmaryschoolchx.com
Days/Hours	Monday - Friday, 8 a.m. - 5:30 p.m.
Ages Served	Ages 3 to 5 years
Meals Provided	Morning snack provided daily, hot lunch available to purchase Tuesday-Thursday for full day students
Schedule Types	<input checked="" type="checkbox"/> Full Time <input checked="" type="checkbox"/> Part Time
Transportation Provided	No
GSQ Quality Level	■ Enhancing Quality
Fees / Funding	Please contact this provider for rates.

Our program is designed for three to five-year-olds (must be fully potty-trained). The program incorporates many developmentally appropriate activities to nurture your child academically, socially, physically, and spiritually. We have a flexible schedule with options that work best for you and your child's needs.

# EAST JORDAN

## Home-Based CHILD CARE

### ▲ Kids Cove

702 Prospect Street, East Jordan  
231.735.0226



Contact Name	Alice Spence
Email	alicespence08@gmail.com
Days/Hours	Monday - Friday
Ages Served	Ages 6 Weeks to 5 Years
Meals Provided	Yes. Breakfast, lunch, and snacks provided. USDA Food Program Member.
Schedule Types	<input checked="" type="checkbox"/> Full Time <input checked="" type="checkbox"/> Part Time
Transportation Provided	No
GSQ Quality Level	■ Enhancing Quality
Fees / Funding	This provider accepts CDC. Please contact them for rates. <b>Apply for CDC here!</b>



## Miss Denise's Daycare

5979 6 Mile Lake Road, East Jordan

231.497.0357



Contact Name	Denise Richards
Email	denise2ehlers@yahoo.com
Days/Hours	Monday - Friday, 7 a.m. - 5 p.m.
Ages Served	Birth to Age 17
Meals Provided	Yes. Breakfast, lunch, and snacks provided. USDA Food Program Member.
Schedule Types	<input checked="" type="checkbox"/> Full Time
Transportation Provided	No
GSQ Quality Level	<input checked="" type="checkbox"/> Enhancing Quality
Fees / Funding	This provider accepts CDC. Please contact them for rates. <b>Apply for CDC here!</b>



# EAST JORDAN

## Center-Based CHILD CARE

### ▲ East Jordan Elementary - Kid's Club Before/Afterschool Program and Pre-K Extended Care

304 Fourth Street, East Jordan

231-587-4367



Contact Name	Amy Burk
Email	aburk@cisnwmi.org
Days/Hours	Monday - Friday; Before school starting at 6:30 a.m. and after school until 5:30 p.m.
Ages Served	Children in Pre-K through Grade 5
Meals Provided	Snacks provided.
Schedule Types	<input checked="" type="checkbox"/> Before School <input checked="" type="checkbox"/> After School <input checked="" type="checkbox"/> Fridays for PreK Program Students
Transportation Provided	No
GSQ Quality Level	■ Demonstrating Quality
Fees / Funding	This provider accepts CDC. Please contact them for rates. <b>Apply for CDC here!</b>

An academic and enrichment based afterschool program is for elementary students in grades K-6 enrolled at East Jordan Elementary School. Our after-school program is a way for your child to have fun, while still getting some academic components mixed in each day. We start our day with a snack, which is provided by the EJ Cafe. During snack, the children will watch an educational show or one of the teachers will read a story. After snack, we will do physical activity, which could include playground or gym time. We will then return to the classroom where we will do some group academics. Because our group is of varying ages and skill levels this will typically be a STEM or social emotional lesson or activity. We will sometimes throw some math or reading/phonics in by doing Jeopardy or BINGO. After a quick academic lesson, we will do an enrichment activity, which could be a craft, board games, or free play in the room.

In addition to the before/after school program options, we also offer care all day on Fridays for three-year olds who are enrolled in our Pre-K program.

## Training Wheels Childcare Center

951 Mill Street, East Jordan

231.536.7290



Contact Name	Andrea Whitaker
Email	trainingwheelscc@gmail.com
Days/Hours	Monday - Friday, 7:30 a.m. - 5:30 p.m.
Ages Served	Birth to Age 5
Accepts CDC	
Meals Provided	No. Parent/guardian brings food.
Schedule Types	<input checked="" type="checkbox"/> Full Time <input checked="" type="checkbox"/> Part Time
Transportation Provided	No
GSQ Quality Level	■ Enhancing Quality
Fees / Funding	Please contact this provider for rates.

**OUR MISSION:** The mission of TWCC is to provide quality childcare by promoting the growth of physical, cognitive, social, and emotional needs while recognizing that each child in our care is unique and treasured. **OUR GOALS:** TWCC provides quality programming enriched with developmentally appropriate activities. Children will be exposed to learning through play-based experiences and materials as well as extended lessons that can include the following areas: - SOCIAL SKILLS - DIVERSITY - MATH - SCIENCE - GROSS MOTOR SKILLS - LANGUAGE/LITERACY - RECOGNITION OF SELF - NUTRITION - COGNITION - EXPLORATION - FINE MOTOR SKILLS



# EAST JORDAN

## Home-Based PRESCHOOL

### ▲ NMCAA Home-Based Headstart Preschool

231.548.2261



Contact Name	Tresha Schiemann
Email	tschiemann@nmcaa.net
Days/Hours	Varies
Ages Served	Ages 3 - 5 years
Meals Provided	No
Schedule Types	<input checked="" type="checkbox"/> One Day/Week
Transportation Provided	No
Fees / Funding / Apply	This program is FREE! <b>APPLY HERE!</b>

NMCAA offers a high-quality licensed home-based Head Start preschool program for children ages three to five, right in the comfort of their own homes. Designed to support kindergarten readiness, this unique program provides weekly visits from a certified preschool teacher, focusing on building essential cognitive, social-emotional, and physical skills through engaging, play-based learning experiences. For families who qualify, Head Start provides additional comprehensive services, including:

- ▶ Education & School Readiness
- ▶ Structured learning experiences to prepare for kindergarten.
- ▶ Health & Nutrition – Health screenings and nutritious meal support.
- ▶ Family Support Services – Connecting families to community resources and programs.

Our home-based preschool program is committed to providing accessible, high-quality early childhood education that nurtures young learners and supports families.

#### Program Highlights:

- ▶ One-on-One Learning: Personalized, developmentally appropriate lessons tailored to each child's needs.
- ▶ School Readiness: Activities designed to enhance early literacy, math, problem-solving, and motor skills.
- ▶ Social-Emotional Growth: Supports emotional regulation, independence, and positive interactions.
- ▶ Family Engagement: Caregivers receive guidance, resources, and strategies to extend learning beyond visits.



# EAST JORDAN

## Center-Based PRESCHOOL

### ▲ East Jordan Elementary and PREP - GSRP

304 4th Street, East Jordan  
231.536.0553, Ext. 5139



Contact Name	Kelly Neer
Email	preschooldirector@ejps.org
Days/Hours	Monday - Friday, 8 a.m. - 3 p.m. (Before school from 6:30 a.m. - 8 a.m. and after school until 5:30 p.m. Monday - Friday)
Ages Served	Age 4 by Dec. 1 of that school year.
Meals Provided	Yes. Snacks and lunch provided.
Schedule Types	<input checked="" type="checkbox"/> Full Time <input checked="" type="checkbox"/> Before School <input checked="" type="checkbox"/> After School
Transportation Provided	No
GSQ Quality Level	■ Demonstrating Quality
Fees / Funding / Apply	This program is FREE! <b><u>APPLY HERE!</u></b>

### ▲ East Jordan Elementary and PREP - Strong Beginnings

304 4th Street, East Jordan  
231.536.0553, Ext. 5139



Contact Name	Kelly Neer
Email	preschooldirector@ejps.org
Days/Hours	Monday - Thursday, 8 a.m. - 3 p.m. (Full day care is offered on Friday from 6:30 a.m. to 5:30 p.m. and after-school care is available everyday until 5:30 p.m.)
Ages Served	Ages 3 to 4 Years
Meals Provided	Yes. Snacks and lunch provided.
Schedule Types	<input checked="" type="checkbox"/> Full Time <input checked="" type="checkbox"/> Before School <input checked="" type="checkbox"/> After School
Transportation Provided	No
GSQ Quality Level	■ Demonstrating Quality
Fees / Funding / Apply	This program is FREE! <b><u>APPLY HERE!</u></b>



# ELLSWORTH

## Center-Based PRESCHOOL

### ▲ Ebenezer Christian Preschool

9541 White Street, Ellsworth  
231.588.6018



Contact Name	Cheyenne Mott
Email	admin@ebenezerchristian.org
Days/Hours	Monday - Friday, 7:45 a.m. - 2:45 p.m.
Ages Served	Ages 3 to 6 years
Meals Provided	No. Parents/guardians supply morning snack, lunch, and afternoon snack.
Schedule Types	<input checked="" type="checkbox"/> Full Time <input checked="" type="checkbox"/> Part Time
Transportation Provided	No
GSQ Quality Level	■ Demonstrating Quality
Fees / Funding	This provider accepts CDC. Please contact them for rates. <b>Apply for CDC here!</b>

Preschool is the wonderful beginning of your child's school experience. We believe that each child has been uniquely and wonderfully made by our Creator God. They are loved beyond measure by our Heavenly Father. Therefore, keeping each Preschooler's individuality and personality in mind, we focus on their individual interests and needs. We provide a safe and nurturing environment where they can play, learn, grow and develop to their full potential. Children learn through active play and exploration, personal interaction with the world around them, and through small and large group activities. In our classroom they are introduced to a daily schedule and routine as well as social rules that will help them to be successful in school and life. We offer a curriculum rich in hands-on experiences focused on objectives such as Spiritual, Social-emotional, Physical, Language, Cognitive, Literacy, Math, Science, Music and Art development.

## ▲ Ellsworth Community School - Little Lancer Preschool GSRP

9467 Park Street, Ellsworth

231.588.2544



<b>Contact Name</b>	Josie Draper
<b>Email</b>	info@ellsworth.k12.mi.us
<b>Days/Hours</b>	Monday -Thursday, 7:40 a.m. - 3 p.m.
<b>Ages Served</b>	Age 4 by Dec. 1 of that school year.
<b>Meals Provided</b>	Meals for a fee. USDA Food Program Member.
<b>Schedule Types</b>	<input checked="" type="checkbox"/> Full Time
<b>Transportation Provided</b>	Yes
<b>GSQ Quality Level</b>	■ Demonstrating Quality
<b>Fees / Funding</b>	Please contact this provider for rates.



# HARBOR SPRINGS

## Home-Based CHILD CARE

### ▲ Ashley Hall's Daycare

3226 Pete's Run, Harbor Springs

231.838.5394



Contact Name	Ashley Hall
Email	ashleyhall1128@gmail.com
Days/Hours	Monday - Friday, 7:30 a.m. - 5:30 p.m.
Ages Served	Birth to Age 12
Meals Provided	No. Parent/guardian brings food.
Schedule Types	<input checked="" type="checkbox"/> Full Time
Transportation Provided	No
GSQ Quality Level	■ Enhancing Quality
Fees / Funding	This provider accepts CDC. Please contact them for rates. <b>Apply for CDC here!</b>



# HARBOR SPRINGS

## Center-Based CHILD CARE

### ▲ Blackbird Child Care Center

421 E. Lake Road, Harbor Springs  
231.526.4656



Contact Name	Danielle Corcoran
Email	dcorcoran@harborps.org
Days/Hours	Monday - Friday, 7:30 a.m. - 6 p.m.
Ages Served	Ages 2 months to 12 years
Meals Provided	No. Meals for a fee or parent/guardian brings food.
Schedule Types	<input checked="" type="checkbox"/> Full Time <input checked="" type="checkbox"/> Part Time <input checked="" type="checkbox"/> Before School <input checked="" type="checkbox"/> After School
Transportation Provided	No
GSQ Quality Level	■ Enhancing Quality-Validated
Fees / Funding	This provider accepts CDC. Please contact them for rates. <b>Apply for CDC here!</b>

Blackbird Child Care is a service provided by the Harbor Springs School District. The program provides child care services for children infants through 12 years of age. Children receive care and learning experiences in high quality, safe environments. Programming is based upon developmentally appropriate practice with a diverse team of caregivers and teachers. Blackbird Child Care Center is led by a program director who is part of the leadership team of Harbor Springs Public Schools.



# HARBOR SPRINGS

## Home-Based PRESCHOOL

### ▲ NMCAA Home-Based Headstart Preschool

231.548.2261



Contact Name	Tresha Schiemann
Email	tschiemann@nmcaa.net
Days/Hours	Varies
Ages Served	Ages 3 - 5 years
Meals Provided	No
Schedule Types	<input checked="" type="checkbox"/> One Day/Week
Transportation Provided	No
Fees / Funding / Apply	This program is FREE! <b>APPLY HERE!</b>

NMCAA offers a high-quality licensed home-based Head Start preschool program for children ages 3 three to five, right in the comfort of their own homes. Designed to support kindergarten readiness, this unique program provides weekly visits from a certified preschool teacher, focusing on building essential cognitive, social-emotional, and physical skills through engaging, play-based learning experiences. For families who qualify, Head Start provides additional comprehensive services, including:

- ▶ Education & School Readiness
- ▶ Structured learning experiences to prepare for kindergarten.
- ▶ Health & Nutrition – Health screenings and nutritious meal support.
- ▶ Family Support Services – Connecting families to community resources and programs.

Our home-based preschool program is committed to providing accessible, high-quality early childhood education that nurtures young learners and supports families.

#### Program Highlights:

- ▶ One-on-One Learning: Personalized, developmentally appropriate lessons tailored to each child's needs.
- ▶ School Readiness: Activities designed to enhance early literacy, math, problem-solving, and motor skills.
- ▶ Social-Emotional Growth: Supports emotional regulation, independence, and positive interactions.
- ▶ Family Engagement: Caregivers receive guidance, resources, and strategies to extend learning beyond visits.



# HARBOR SPRINGS

## Center-Based PRESCHOOL

### ▲ Blackbird Preschool - GSRP

421 E. Lake Road, Harbor Springs  
231.526.4656



Contact Name	Danielle Corcoran
Email	dcorcoran@harborps.org
Days/Hours	Monday through Thursday 8 a.m. - 3 p.m. (There is limited before and after care available M-Th 7:30 a.m. - 8 a.m. and then 3 p.m. - 6 p.m. and Fridays 7:30 a.m. - 6 p.m.)
Ages Served	Children who are 4 by December 1st
Meals Provided	Yes. One meal and two snacks are provided for children enrolled in the GSRP program.
Schedule Types	<input checked="" type="checkbox"/> Full Time <input checked="" type="checkbox"/> Before School <input checked="" type="checkbox"/> After School
Transportation Provided	Yes
GSQ Quality Level	■ Enhancing Quality-Validated
Fees / Funding / Apply	This program is FREE! <b>APPLY HERE!</b>

At Harbor Springs Blackbird Great Start Readiness Preschool Program (GSRP), we believe parents, children, and schools build successful tomorrows. We believe that parents are the primary educators of their children and strive to enhance parent knowledge about child development and the specific development of their child. We encourage parent involvement in their child's schooling. We strive to provide an environment of trust, understanding, comfort and safety. We hope to instill a sense of personal responsibility, empathy toward others and a desire to learn.

At the Blackbird Preschool Great Start Readiness Program, we believe that all children develop emotionally, intellectually, physically and socially. All areas of development are equally important and affect one another. We also believe that children develop as a result of their interactions with adults, other children and the materials around them. Based on these beliefs, we provide opportunities for children to develop in all domains through interactions individually, with the teacher, other children, and with materials.

Our program is assessed with the Classroom Assessment Scoring System (CLASS). This is an ongoing process where, as a program, we set goals and review data to improve the quality of our program.

## Harbor Light Christian Preschool

8333 Clayton Road, Harbor Springs

231.347.7859



<b>Contact Name</b>	Lisa Hopkins
<b>Email</b>	hlcs@harborlight.org
<b>Days/Hours</b>	Full Time: Monday - Friday, 8 a.m. - 3 p.m. Part Time: Tuesday - Thursday, 8a.m. - 3 p.m.
<b>Ages Served</b>	Ages 3 to 5 years
<b>Meals Provided</b>	No. Parent/guardian brings food.
<b>Schedule Types</b>	<input checked="" type="checkbox"/> Full Time <input checked="" type="checkbox"/> Part Time
<b>Transportation Provided</b>	No
<b>GSQ Quality Level</b>	■ Maintaining Health & Safety
<b>Fees / Funding</b>	Please contact this provider for rates.

Our Preschool Program's priority is that children have a positive first school experience. At HLCS children grow in their faith and love for the Lord Jesus Christ while becoming eager confident learners. Being Christ-centered, we love to work alongside parents to best meet the spiritual, social, emotional, cognitive and physical needs of each child as he/she develops. Making the most of children's early formative years is crucial for them to reach their full potential in the years ahead.

Children thrive in safe, predictable environments so expectations, limits and routines are clearly defined and practiced as children go through the day. Our curriculum is developmentally appropriate, geared to the learning styles of young children and their stages of development. Children in our program experience a variety of child and teacher directed activities with an emphasis on active learning through exploration and play. They are taught to treat others as they would like to be treated, as we create a learning classroom of loving kindness and respect. Through modeling of appropriate Christ-like behavior, redirection, active listening, decision making and problem solving, we are helping children build their foundation for future success.

We are excited about the opportunity to partner with you in your child's education. Our preschool program is designed for children who will turn three or four by September 1st of the current school year. Parents have the choice between their child attending three (TWTh) or five (M-F) full days a week.



# PELLSTON

## Home-Based CHILD CARE

### ▲ Playful Pines Daycare

508 White Pine Drive, Pellston  
231.373.9822



Contact Name	Andrea Clifford
Email	andreaclifford@gmail.com
Days/Hours	
Ages Served	Birth to Age 5
Meals Provided	
Schedule Types	
Transportation Provided	No
GSQ Quality Level	■ Maintaining Health & Safety
Fees / Funding	Please contact this provider for rates.

### ▲ Tiny Tots Daycare

99 Poplar Road, Pellston  
231.818.2997



Contact Name	Alissa Wiatrolik
Email	alissa.vieau@rocketmail.com
Days/Hours	Monday - Friday, 7:30 a.m. - 5:30 p.m.
Ages Served	Birth to Age 6
Meals Provided	
Schedule Types	<input checked="" type="checkbox"/> Full Time <input checked="" type="checkbox"/> Part Time <input checked="" type="checkbox"/> Drop In/Hourly <input checked="" type="checkbox"/> Before School <input checked="" type="checkbox"/> After School
Transportation Provided	No
GSQ Quality Level	■ Enhancing Quality
Fees / Funding	This provider accepts CDC. Please contact them for rates. <b>Apply for CDC here!</b>



# PELLSTON

## Center-Based CHILD CARE

### ▲ Bear Cub Child Care Center - Child Care

421 Stimpson, Suite 101, Pellston

231.539.8699



Contact Name	Christy Cameron
Email	bearcubchildcarecenter1@gmail.com
Days/Hours	Monday - Friday, 7 a.m. - 5:30 p.m.
Ages Served	Birth to Age 12
Meals Provided	No. Parent/guardian brings food.
Schedule Types	<input checked="" type="checkbox"/> Full Time <input checked="" type="checkbox"/> Part Time <input checked="" type="checkbox"/> Drop In/Hourly <input checked="" type="checkbox"/> Before School <input checked="" type="checkbox"/> After School
Transportation Provided	No
GSQ Quality Level	■ Enhancing Quality-Validated
Fees / Funding	This provider accepts CDC. Please contact them for rates. <b>Apply for CDC here!</b>



# PELLSTON

## Home-Based PRESCHOOL

### ▲ NMCAA Home-Based Headstart Preschool

231.548.2261



Contact Name	Tresha Schiemann
Email	tschiemann@nmcaa.net
Days/Hours	Varies
Ages Served	Ages 3 - 5 years
Meals Provided	No
Schedule Types	<input checked="" type="checkbox"/> One Day/Week
Transportation Provided	No
Fees / Funding / Apply	This program is FREE! <b>APPLY HERE!</b>

NMCAA offers a high-quality licensed home-based Head Start preschool program for children ages three to five, right in the comfort of their own homes. Designed to support kindergarten readiness, this unique program provides weekly visits from a certified preschool teacher, focusing on building essential cognitive, social-emotional, and physical skills through engaging, play-based learning experiences. For families who qualify, Head Start provides additional comprehensive services, including:

- ▶ Education & School Readiness
- ▶ Structured learning experiences to prepare for kindergarten.
- ▶ Health & Nutrition – Health screenings and nutritious meal support.
- ▶ Family Support Services – Connecting families to community resources and programs.

Our home-based preschool program is committed to providing accessible, high-quality early childhood education that nurtures young learners and supports families.

#### Program Highlights:

- ▶ One-on-One Learning: Personalized, developmentally appropriate lessons tailored to each child's needs.
- ▶ School Readiness: Activities designed to enhance early literacy, math, problem-solving, and motor skills.
- ▶ Social-Emotional Growth: Supports emotional regulation, independence, and positive interactions.
- ▶ Family Engagement: Caregivers receive guidance, resources, and strategies to extend learning beyond visits.



# PELLSTON

## Center-Based PRESCHOOL

### ▲ Bear Cub Child Care Center - Preschool

421 Stimpson, Suite 101, Pellston  
231.539.8699



Contact Name	Christy Cameron
Email	bearcubchildcarecenter1@gmail.com
Days/Hours	Monday - Friday, 8 a.m. - 3 p.m. (Before and after care available beginning at 7 a.m. until 5:30 p.m.)
Ages Served	Ages 2 years 9 months to 5 Years
Meals Provided	No. Parent/guardian brings food.
Schedule Types	<input checked="" type="checkbox"/> Full Time <input checked="" type="checkbox"/> Part Time <input checked="" type="checkbox"/> Drop In/Hourly <input checked="" type="checkbox"/> Before School <input checked="" type="checkbox"/> After School
Transportation Provided	No
GSQ Quality Level	■ Enhancing Quality-Validated
Fees / Funding	This provider accepts CDC. Please contact them for rates. <b>Apply for CDC here!</b>

### ▲ LTBB Head Start

233 Tindle Street, Pellston  
231.539.8325



Contact Name	LeeAnn Johnston
Email	lajohnston@itcmi.org
Days/Hours	Monday - Thursday, 8 a.m. - 2:30 p.m.
Ages Served	Ages 3 to 5 years
Meals Provided	Yes. Breakfast, lunch, and snacks provided.
Schedule Types	<input checked="" type="checkbox"/> Full Time
Transportation Provided	
GSQ Quality Level	■ Maintaining Health & Safety
Fees / Funding / Apply	This program is FREE! <b>APPLY HERE!</b>

## ▲ Pellston Elementary - Little Hornets 4 Year Old GSRP Program

233 Tindle Street, Pellston

231.539.8421



Contact Name	Caitlin Nathan
Email	cnathan@pellstonschools.org
Days/Hours	Monday - Thursday, 8 a.m. - 3 p.m.
Ages Served	Age 4 by Dec. 1 of that school year.
Meals Provided	Yes. Breakfast, lunch, and snacks provided.
Schedule Types	<input checked="" type="checkbox"/> Full Time
Transportation Provided	Yes
GSQ Quality Level	■ Demonstrating Quality
Fees / Funding / Apply	This program is FREE! <b><u>APPLY HERE!</u></b>

At Little Hornets Preschool we believe that children learn through play. Play encourages curiosity, discovery, and problem solving. We are a child-centered program that focuses on all areas of development; physical, cognitive, social-emotional, and language. Based on these beliefs, we provide developmentally appropriate experiences with materials, other children, and the adults through a safe & nurturing environment. Our curriculum is designed to meet the unique needs of each student as well as extend their academic skills. Little Hornets preschool schedule and activities foster creativity, self-esteem, and a love for learning.

## ▲ Pellston Elementary - Little Hornets 3 Year Old Preschool

233 Tindle Street, Pellston

231.539.8421



Contact Name	Caitlin Nathan
Email	cnathan@pellstonschools.org
Days/Hours	Monday - Thursday, 8 a.m. - 3 p.m.
Ages Served	Age 3
Meals Provided	Yes. Breakfast, lunch, and snacks provided.
Schedule Types	<input checked="" type="checkbox"/> Full Time
Transportation Provided	No
GSQ Quality Level	■ Demonstrating Quality
Fees / Funding / Apply	This program is FREE! <b><u>APPLY HERE!</u></b>

At Little Hornets Preschool we believe that children learn through play. Play encourages curiosity, discovery, and problem solving. We are a child-centered program that focuses on all areas of development; physical, cognitive, social-emotional, and language. Based on these beliefs, we provide developmentally appropriate experiences with materials, other children, and the adults through a safe & nurturing environment. Our curriculum is designed to meet the unique needs of each student as well as extend their academic skills. Little Hornets preschool schedule and activities foster creativity, self-esteem, and a love for learning.

# PETOSKEY

## Home-Based CHILD CARE

### ▲ Chelsea's Childcare

3233 Click Road, Petoskey  
906.360.8842



Contact Name	Chelsea Tarvainen
Email	cmtarvainen@gmail.com
Days/Hours	Monday - Friday, 7 a.m. - 5 p.m.
Ages Served	Birth to Age 6
Meals Provided	Yes. Breakfast, lunch, and snacks provided. USDA Food Program Member.
Schedule Types	<input checked="" type="checkbox"/> Full Time <input checked="" type="checkbox"/> Part Time <input checked="" type="checkbox"/> Drop In/Hourly
Transportation Provided	No
GSQ Quality Level	■ Demonstrating Quality
Fees / Funding	This provider accepts CDC. Please contact them for rates. <b>Apply for CDC here!</b>

### ▲ Little Minnows

9805 Pickerel Lake Road, Petoskey  
231.373.3709



Contact Name	Jessica Rocheleau
Email	Jessica.kay725@gmail.com
Days/Hours	Monday - Friday, 7:30 a.m. - 5 p.m.
Ages Served	Birth to Age 17
Meals Provided	
Schedule Types	
Transportation Provided	No
GSQ Quality Level	■ Maintaining Health & Safety
Fees / Funding	Please contact this provider for rates.

## Kathleen Scarbrough

5576 Pickerel Lake Road, Petoskey

231.347.3567



Contact Name	Kathleen Scarbrough
Email	daly525@hotmail.com
Days/Hours	Monday - Friday, 6:30 a.m. - 5:30 p.m.
Ages Served	Birth to Age 17
Meals Provided	Yes. Breakfast, lunch, dinner, and snacks provided. Dietary preferences available.
Schedule Types	
Transportation Provided	No
GSO Quality Level	<input checked="" type="checkbox"/> Maintaining Health & Safety
Fees / Funding	This provider accepts CDC. Please contact them for rates. <b>Apply for CDC here!</b>

## Sherry Loar-Trudell

801 West Sheridan, Petoskey

231.347.1504



Contact Name	Sherry Loar-Trudell
Email	28principles@hotmail.com
Days/Hours	Monday - Friday, 6 a.m. - 6:30 p.m.
Ages Served	Ages 2 months to 12 years
Meals Provided	Yes. Breakfast, lunch, dinner, and snacks provided. Dietary preferences available. USDA Food Program Member.
Schedule Types	<input checked="" type="checkbox"/> Full Time <input checked="" type="checkbox"/> Part Time <input checked="" type="checkbox"/> Before School <input checked="" type="checkbox"/> After School
Transportation Provided	No
GSO Quality Level	<input checked="" type="checkbox"/> Maintaining Health & Safety
Fees / Funding	This provider accepts CDC. Please contact them for rates. <b>Apply for CDC here!</b>

# PETOSKEY

## Center-Based CHILD CARE

### Compass After School Program

1804 East Mitchell Road, Petoskey

517.455.9873



Contact Name	Kelley Halverson
Email	compass@petoskeyumc.org
Days/Hours	After School from 3 p.m. - 6 p.m.*
Ages Served	Children K-5; Ages 5 to 12 Years
Meals Provided	No
Schedule Types	<input checked="" type="checkbox"/> After School
Transportation Provided	Yes
GSQ Quality Level	■ Enhancing Quality
Fees / Funding	This provider accepts CDC. Please contact them for rates. <b>Apply for CDC here!</b>

\*Compass follows the Public Schools of Petoskey school calendar. When school is closed, Compass is closed. This includes teacher in-service days, half days, holidays, and snow days.

Compass is an after-school program that nurtures children with licensed staff in a loving, safe and welcoming environment to help them become caring, compassionate members of the community through education, mentorship, and play. Enrollment is open for children K-five; ages five to twelve. Through play-based learning, structured activity modeling, theme days, and free choice opportunities, Compass is dedicated to helping students build essential life skills while cultivating a strong sense of belonging and community.



## ▲ Northern Michigan Community Child Development Center

416 Connable Ave., Petoskey

231. 487.4563



<b>Contact Name</b>	Crystal Speigl
<b>Email</b>	Crystal.Speigl@mclaren.org
<b>Days/Hours</b>	Monday - Friday, 7 a.m. - 5:30 p.m. (Preschool Program runs from 8:30 a.m. to 12 p.m.)
<b>Ages Served</b>	Ages 2 months to 10 years
<b>Meals Provided</b>	Parent/guardian provides lunch. We provide both a morning and afternoon snack.
<b>Schedule Types</b>	<input checked="" type="checkbox"/> Full Time <input checked="" type="checkbox"/> Part Time <input checked="" type="checkbox"/> Before School <input checked="" type="checkbox"/> After School
<b>Transportation Provided</b>	No
<b>GSQ Quality Level</b>	■ Demonstrating Quality
<b>Fees / Funding</b>	This provider accepts CDC. Please contact them for rates. <b>Apply for CDC here!</b>

We are a child development center that services children from age six weeks through ten years old. Our classrooms are based on creative curriculum, we are a play-based program that believes children learn through their experiences with the guidance of their teacher. We have seven classrooms at the center, an infant room, two toddler classrooms, three preschool classrooms, and an after-school classroom. We are open Monday through Friday from 7 a.m. - 5:30 p.m. and our preschool hours are from 8:30am-12:00pm where the time is more structured. If you have any questions, please contact us at (231) 487-4563.

## ▲ Petoskey Montessori Childrens House

1560 E. Mitchell, Petoskey

231. 753.2012



Contact Name	Angie Moulton
Email	angie@petoskeymontessori.org
Days/Hours	Monday - Friday, 7:30 a.m. - 5:30 p.m.
Ages Served	Ages 2 months to 12 years
Meals Provided	Snacks are provided.
Schedule Types	<input checked="" type="checkbox"/> Full Time <input checked="" type="checkbox"/> Part Time <input checked="" type="checkbox"/> Before School <input checked="" type="checkbox"/> After School
Transportation Provided	No
GSO Quality Level	■ Enhancing Quality
Fees / Funding	This provider accepts CDC. Please contact them for rates. <b>Apply for CDC here!</b>

## ▲ St. Francis Pre K Child Care

414 Michigan, Petoskey

231.347.3651



Contact Name	Leigh Helton or Krystyna Kolinski
Email	sfxcdcprek@live.com
Days/Hours	Monday - Friday, 6:30 a.m. - 5:30 p.m.
Ages Served	Ages 2 months to 14 years
Accepts CDC	No
Meals Provided	No. Parent/guardian brings food and snacks.
Schedule Types	<input checked="" type="checkbox"/> Full Time <input checked="" type="checkbox"/> Part Time <input checked="" type="checkbox"/> Before School <input checked="" type="checkbox"/> After School
Transportation Provided	No
GSO Quality Level	■ Maintaining Health & Safety
Fees / Funding	Please contact this provider for rates.



# PETOSKEY

## Home-Based PRESCHOOL

### ▲ NMCAA Home-Based Headstart Preschool

231.548.2261



Contact Name	Tresha Schiemann
Email	tschiemann@nmcaa.net
Days/Hours	Varies
Ages Served	Ages 3 - 5 years
Meals Provided	No
Schedule Types	<input checked="" type="checkbox"/> One Day/Week
Transportation Provided	No
Fees / Funding / Apply	This program is FREE! <b>APPLY HERE!</b>

NMCAA offers a high-quality licensed home-based Head Start preschool program for children ages three to five, right in the comfort of their own homes. Designed to support kindergarten readiness, this unique program provides weekly visits from a certified preschool teacher, focusing on building essential cognitive, social-emotional, and physical skills through engaging, play-based learning experiences. For families who qualify, Head Start provides additional comprehensive services, including:

- ▶ Education & School Readiness
- ▶ Structured learning experiences to prepare for kindergarten.
- ▶ Health & Nutrition – Health screenings and nutritious meal support.
- ▶ Family Support Services – Connecting families to community resources and programs.

Our home-based preschool program is committed to providing accessible, high-quality early childhood education that nurtures young learners and supports families.

#### Program Highlights:

- ▶ One-on-One Learning: Personalized, developmentally appropriate lessons tailored to each child's needs.
- ▶ School Readiness: Activities designed to enhance early literacy, math, problem-solving, and motor skills.
- ▶ Social-Emotional Growth: Supports emotional regulation, independence, and positive interactions.
- ▶ Family Engagement: Caregivers receive guidance, resources, and strategies to extend learning beyond visits.



# PETOSKEY

## Center-Based PRESCHOOL

### ▲ Childrens Learning Center

2225 Summit Park Dr., Petoskey  
231.347.0067



Contact Name	Nicole Dixon
Email	ndixon@wrcnm.org
Days/Hours	Monday - Friday, 7:30 a.m. - 5:30 p.m.
Ages Served	Ages 3 to 5 years (Ages 3 to 10 years before and after school)
Meals Provided	No. Parent/guardian brings food and snacks.
Schedule Types	<input checked="" type="checkbox"/> Full Time <input checked="" type="checkbox"/> Part Time <input checked="" type="checkbox"/> Before School <input checked="" type="checkbox"/> After School
Transportation Provided	No
GSQ Quality Level	■ Demonstrating Quality
Fees / Funding	This provider accepts CDC. Please contact them for rates. <b>Apply for CDC here!</b>

The Children's Learning Center emphasizes developmentally-appropriate learning experiences for children ages three to five with curriculum based preschool 8 a.m. to 3 p.m. with extended care available for our preschool program families from 7:30 a.m. to 8:15 a.m. and 3:15 p.m. to 5:30 p.m. For enrolled preschool families with older school-age children (ages five to ten), the CLC also provides the option of before/after school care and summer programming.



## ▲ Concord Academy Petoskey - GSRP

2468 Atkins Road, Petoskey

231.439.6800



Contact Name	<i>New Program. Information Coming Soon!</i>
Email	<i>New Program. Information Coming Soon!</i>
Days/Hours	Monday - Friday, 8 a.m. - 3 p.m.
Ages Served	Serving children who turn 4 by Dec. 1
Meals Provided	Yes. Breakfast, lunch, and snacks provided.
Schedule Types	<input checked="" type="checkbox"/> Full Time
Transportation Provided	Yes
GSQ Quality Level	
Fees / Funding / Apply	This program is FREE! <b><u>APPLY HERE!</u></b>

*New Program. Information Coming Soon!*

## Little Northmen Preschool

871 Kalamazoo Avenue, Petoskey

231.348.2130



<b>Contact Name</b>	Tyler Spsychalski
<b>Email</b>	tspychalski@northmen.org
<b>Days/Hours</b>	Monday - Friday, 7:30am - 5:00pm Preschool Program Runs, 8:00am - 3:00pm
<b>Ages Served</b>	Ages 4 to 5 years
<b>Meals Provided</b>	Yes. Breakfast, lunch, and snacks provided.
<b>Schedule Types</b>	<input checked="" type="checkbox"/> Full Time <input checked="" type="checkbox"/> Before School <input checked="" type="checkbox"/> After School
<b>Transportation Provided</b>	No
<b>GSQ Quality Level</b>	■ Demonstrating Quality
<b>Fees / Funding</b>	Please contact this provider for rates.

Little Northmen Preschool is designed for four-year-old children who (we hope) will eventually join the Public Schools of Petoskey. Our mission is to prepare these young learners for a successful transition to kindergarten.

We recognize that each child is a unique individual with distinct physical, social, emotional, and intellectual needs. Acknowledging the diverse backgrounds from which our students come, we offer personalized and stimulating experiences within a diverse, bias-free environment.

Our preschool maintains a warm and secure atmosphere where children are encouraged to explore, create, and discover independently through interaction with materials. We facilitate engagement with ideas through open-ended questions, problem-solving, discussions, and emphasizing the learning process. Interaction with peers and adults during uninterrupted play promotes cooperation, self-responsibility, and mutual respect.

We operate with two classrooms, each accommodating a maximum of 16 students. Our lead teachers are highly qualified early education professionals with nearly 30 years of combined classroom experience. Our assistants and aides have demonstrated consistent commitment to the program. The student-to-adult ratio is 16:2, and typically 16:3. Additionally, we provide before (7:30-8:00 am) and after-school care (3:00-5:00 pm) for the children enrolled in our program.

In alignment with Kindergarten readiness expectations, our program aims to foster lifelong learning in children beginning at age four. We provide families with the opportunity to collaborate with our team to support their child's social, emotional, and academic development prior to entering Kindergarten.

To register visit <https://www.petoskeyschools.org/enrollment/> or contact Nicole Morrow at [morrow.nm.y@northmen.org](mailto:morrow.nm.y@northmen.org) or (231) 348-2354.

## North Central Michigan College Early Learning Center

1515 Howard Street, Petoskey

231.347.9070



Contact Name	Sadie Riley-Flemming
Email	rileyflemmings@ncmich.edu
Days/Hours	Monday - Friday, 7:30 a.m. -5:30 p.m.
Ages Served	Ages 3 Months - 3 Years
Meals Provided	Parent/guardian provides meals.
Schedule Types	<input checked="" type="checkbox"/> Full Time
Transportation Provided	No
GSQ Quality Level	■ Enhancing Quality-Validated
Fees / Funding / Apply	This provider accepts CDC. Please contact them for rates. <b>Apply for CDC here!</b>

Our program, located on North Central's Petoskey campus, focuses on child-led exploration, personalized learning, and meaningful connections. Guided by experienced and compassionate caregivers, children engage in activities that spark creativity, critical thinking, and a deep connection to nature. Inspired by the Reggio Emilia philosophy, we believe children have a hundred languages—endless ways to express themselves and make sense of the world. Honoring each child's unique needs and interests fosters an environment where curiosity blossoms, confidence grows, and young minds thrive. Our close partnership with North Central Michigan College's Early Childhood Education department enriches our program with the latest research and quality practices in early learning. This unique connection allows for collaboration with experienced educators and college students, ensuring a dynamic and innovative environment for children. Together, we are dedicated to fostering high-quality early education that benefits children, families, and the community.



## **NMCAA Petoskey Ottawa - GSRP**

871 Kalamazoo Avenue, Petoskey

231.347.9070



<b>Contact Name</b>	Tresha Schiemann
<b>Email</b>	tschiemann@nmcaa.net
<b>Days/Hours</b>	Monday - Thursday, 8 a.m. - 3 p.m.
<b>Ages Served</b>	Age 4 by Dec. 1 of that school year.
<b>Meals Provided</b>	Yes. Breakfast, lunch, and snacks provided. USDA food Program Member. Dietary preferences available.
<b>Schedule Types</b>	<input checked="" type="checkbox"/> Full Time
<b>Transportation Provided</b>	No
<b>GSQ Quality Level</b>	■ Demonstrating Quality
<b>Fees / Funding / Apply</b>	This program is FREE! <b><u>APPLY HERE!</u></b>

This is a Headstart run program that receives its funding from GSRP. This preschool program prepares children for success in school and beyond by focusing on the whole child—socially, emotionally, physically, and cognitively. Through play-based learning and hands-on activities, children explore, discover, and learn at their own pace. Our caring, qualified teachers create a warm, welcoming environment where children feel safe, valued, and empowered. Using research-based curriculum and assessment tools, they provide individualized attention, fostering academic and emotional growth. Family involvement is key to a child's success, so we encourage active participation through parent-teacher conferences, workshops, and family events. These opportunities strengthen the home to school connection, creating a supportive and enriching learning experience.



## ▲ NMCAA Preschool / Petoskey - Head Start

1515 Cemetery Road, Petoskey

231.439.6876



Contact Name	Tresha Schiemann
Email	tschiemann@nmcaa.net
Days/Hours	Monday - Thursday, 8 a.m. - 3 p.m.
Ages Served	Ages 2 years 9 months - 5 years
Meals Provided	Yes. Breakfast, lunch, and snacks provided. USDA food Program Member. Dietary preferences available.
Schedule Types	<input checked="" type="checkbox"/> Full Time
Transportation Provided	No
GSQ Quality Level	■ Demonstrating Quality
Fees / Funding / Apply	This program is FREE! <b><u>APPLY HERE!</u></b>

Headstart is a federally funded preschool program that prepares children for success in school and beyond by focusing on the whole child—socially, emotionally, physically, and cognitively. Through play-based learning and hands-on activities, children explore, discover, and learn at their own pace. Our caring, qualified teachers create a warm, welcoming environment where children feel safe, valued, and empowered. Using research-based curriculum and assessment tools, they provide individualized attention, fostering academic and emotional growth. Family involvement is key to a child's success, so we encourage active participation through parent-teacher conferences, workshops, and family events. These opportunities strengthen the home to school connection, creating a supportive and enriching learning experience.

## ▲ Northern Michigan Community Child Development Center

416 Connable Ave., Petoskey

231.487.4563



Contact Name	Crystal Speigl
Email	Crystal.Speigl@mclaren.org
Days/Hours	Monday - Friday, 7 a.m. - 5:30 p.m. (Preschool Program runs from 9 a.m. to 11 a.m.)
Ages Served	Ages 2 months to 10 years
Meals Provided	Parent/guardian provides lunch. We provide both a morning and afternoon snack.
Schedule Types	<input checked="" type="checkbox"/> Full Time <input checked="" type="checkbox"/> Part Time <input checked="" type="checkbox"/> Before School <input checked="" type="checkbox"/> After School
Transportation Provided	No
GSQ Quality Level	■ Demonstrating Quality
Fees / Funding	This provider accepts CDC. Please contact them for rates. <b>Apply for CDC here!</b>

## ▲ Petoskey Children's Nature Preschool

1804 E. Mitchell, Petoskey  
231.939.9009



Contact Name	Ann Stebelton
Email	petoskeychildrenpreschool@gmail.com
Days/Hours	Monday - Friday, 8:30 a.m. - 3:30 p.m.
Ages Served	Ages 3 years 6 months to 5 years
Meals Provided	No. Parent/guardian brings food and snacks.
Schedule Types	<input checked="" type="checkbox"/> Full Time <input checked="" type="checkbox"/> Part Time
Transportation Provided	No
GSQ Quality Level	■ Demonstrating Quality
Fees / Funding	This provider accepts CDC. Please contact them for rates. <b>Apply for CDC here!</b>

We are a play-based and nature-centered preschool. We offer a variety of classes and they are all multi-age for children three to five years old. We have a MWF, a T/TH, and a M-F all mornings or full day 8:30 a.m. to 3:30 p.m. We spend much of our time in nature exploring the world around us. We center our curriculum around the natural world and use these prompts to guide each child's social, emotional, and academic learning.

## ▲ Petoskey Montessori Childrens House - GSRP

1560 E. Mitchell, Petoskey  
231. 753.2012



Contact Name	Angie Moulton
Email	angie@petoskeymontessori.org
Days/Hours	Monday - Friday, 8 a.m. - 3 p.m. (Before and after care available at an additional charge)
Ages Served	Age 4 years
Meals Provided	Yes. Lunch and snacks are provided.
Schedule Types	<input checked="" type="checkbox"/> Full Time <input checked="" type="checkbox"/> Before School <input checked="" type="checkbox"/> After School
Transportation Provided	No
GSQ Quality Level	■ Enhancing Quality
Fees / Funding / Apply	This program is FREE! <b>APPLY HERE!</b>

A state funded Great Start Readiness Program (GSRP) that provides high quality early childhood experiences to build a foundation for lifelong learning. Staff are certified and/or trained in the field of early childhood; they are committed to providing children with a successful preschool experience to help them learn and grow. Class costs are free; participants must meet eligibility requirements and complete a program application. For more information, call (800) 443-5518 or visit www.nmcaa.net.

## Women's Resource Center Northern Michigan (WRCNM) Preschool - GSRP

2225 Summit Park Dr., Petoskey

231.347.0067



Contact Name	Nicole Dixon
Email	ndixon@wrcnm.org
Days/Hours	Monday - Thursday, 8:20 a.m. - 3:15 p.m. (Full day care is offered on Friday from 7:30 to 5:30 p.m. and before and after-school care is available everyday until 5 p.m.)
Ages Served	Ages 4 years (Ages 3 to 10 years before and after school)
Meals Provided	Yes. Lunch and snacks are provided.
Schedule Types	<input checked="" type="checkbox"/> Full Time <input checked="" type="checkbox"/> Before School <input checked="" type="checkbox"/> After School
Transportation Provided	No
GSQ Quality Level	■ Demonstrating Quality
Fees / Funding / Apply	This program is FREE! <b><u>APPLY HERE!</u></b>

A state funded Great Start Readiness Program (GSRP) that provides high quality early childhood experiences to build a foundation for lifelong learning. Staff are certified and/or trained in the field of early childhood; they are committed to providing children with a successful preschool experience to help them learn and grow. Class costs are free; participants must meet eligibility requirements and complete a program application. For more information, call (800) 443-5518 or visit [www.nmcaa.net](http://www.nmcaa.net).

## Zion Lutheran Church Preschool

500 W. Mitchell, Petoskey

231.347.2757



Contact Name	Kim Timm
Email	preschool@zionlutheranpetoskey.org
Days/Hours	Monday - Friday, 8:30 a.m. - 11:30 p.m. (see all Schedule options in description below)
Ages Served	Ages 3 to 6 years
Meals Provided	Snacks provided.
Schedule Types	<input checked="" type="checkbox"/> Full Time <input checked="" type="checkbox"/> Part Time
Transportation Provided	No
GSQ Quality Level	■ Maintaining Health & Safety
Fees / Funding	Please contact this provider for rates.

If you're looking for a program that will help your preschool aged child get ready for kindergarten, come check us out! We offer an academic, play-based program that also teaches children about God's love for them. We offer several sessions: morning only (8:30 a.m. to 11:30 a.m.) T/Th, MWF, or M-F. All sessions are mixed age group (three to five-year-olds together.)

# Child Development Resources

Nurturing your child's development from birth and beyond is essential for their growth, learning, and well-being. Accessing resources like developmental screenings, educational programs, and early intervention services helps identify and address potential challenges early, setting the stage for success. These tools also provide parents with valuable support and guidance, making it easier to navigate each stage of childhood.

Discover recommended family resources below to support your child's development and help them thrive!

## **Ages & Stages Questionnaire (ASQ)**

The Ages and Stages Questionnaire (ASQ) is a free, easy-to-use tool that helps parents and caregivers monitor their child's development by tracking physical, social, and cognitive milestones from birth to age six.

---

## **Build Up Michigan Thrive From Home Website**

Build Up Michigan provides special education services for children aged 3 to 5, helping families navigate the resources available through local schools.

---

## **Early On Michigan Website**

Early On Michigan offers early intervention services, including personalized support for infants and toddlers (birth to age 3) who are experiencing developmental delays or disabilities.

---

## **Guide to Char-Em Early On and the Primary Service Provider Approach**

This digital guide will help you learn the essentials about Char-Em Early On and the Primary Service Provider (PSP) Approach. It covers details about where we meet, what a visit entails, why it works, how the PSP approach differs from traditional therapy, and answers commonly asked questions.

## Family Resource Guide

The Great Start Collaborative Family Resource Guide is a comprehensive, interactive digital booklet designed to connect families in Char-Em ISD with essential programs, services, and support. Covering everything from child development resources and early intervention to family support services, this guide helps parents and caregivers easily navigate local opportunities to ensure their child's success.

---

## Great Start to Quality Quick Search Link

Great Start to Quality is Michigan's quality recognition and improvement system, offering a comprehensive database of licensed child care providers and preschool programs to help families find the best care for their child.

---

## Help Me Grow Char-Em

Help Me Grow Char-Em connects families to local services and resources, including developmental screenings, parenting support, and early learning opportunities.

# Great Start Family Coalition

## The Connection All Families Need

Raising kids is an adventure, and you don't have to do it alone!

The Family Coalition brings parents and caregivers together for fun, support, and connection. We gather for family friendly events, swap parenting tips & tricks, and share stories - all while building friendships and learning about valuable family resources in our community! Most importantly, we have a lot of fun!

This group is open to anyone raising children (prenatal to age 12) in Charlevoix, Emmet, and northern Antrim counties. We meet monthly via Zoom from 11 a.m. - noon, with an optional "Chill & Chat" at 10:45 a.m. to casually connect with other parents before we start. Come join the conversation!



Like us on Facebook!  
[@greatstart](#)

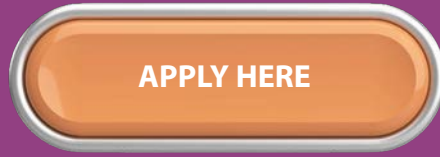


Charlevoix, Emmet,  
Northern Antrim Counties  
[greatstartcollaborative.org](http://greatstartcollaborative.org)

[REGISTER HERE](#)

[Learn more here!](#)

Complete the FREE PRESCHOOL application today!



Click the button or visit:  
[https://bit.ly/FREE\\_Preschool](https://bit.ly/FREE_Preschool)



Need more  
information?  
231.308.0278



Supporting Schools  
Supporting Students

08568 Mercer Boulevard  
Charlevoix, Michigan 49720  
231.547.9947 p  
231.547.5621 f  
[www.charemisd.org](http://www.charemisd.org)

It is the policy of the Charlevoix-Emmet Intermediate School District to comply with all federal laws and regulations prohibiting discrimination and with all requirements and regulations of the U.S. Department of Education. It is the policy of the Charlevoix-Emmet Intermediate School District that no person on the basis of race, color, religion, national origin or ancestry, age, gender, height, weight, marital status, or disability shall be subjected to discrimination in any program, activity or service for which it is responsible, or for which it receives financial assistance from the U.S. Department of Education. For more information contact the Civil Rights Coordinator at 231.547.9947.