



# RUSTIEK HOTEL PROFILE PRESENTATION

***A-FRAME YOUR DREAMS,  
FLOAT ABOVE THE ORDINARY***



# WELCOME TO OUR HOTEL

Welcome to Rustiek Hotel, your idyllic escape in Kasane. Nestled on the very banks of the Chobe River, our intimate 15-bedroom haven offers unparalleled access to the region's natural wonders. Imagine waking up to the gentle murmur of the river as you sway amongst the waves in your Floating Room, and stepping outside your A-Frame Room onto a walkway that leads directly to the water's edge. And for an unforgettable culinary adventure, our exquisite restaurant welcomes day trippers seeking a delectable taste of local cuisine amidst breathtaking river scenery.



# OUR VISION & MISSION



## Vision

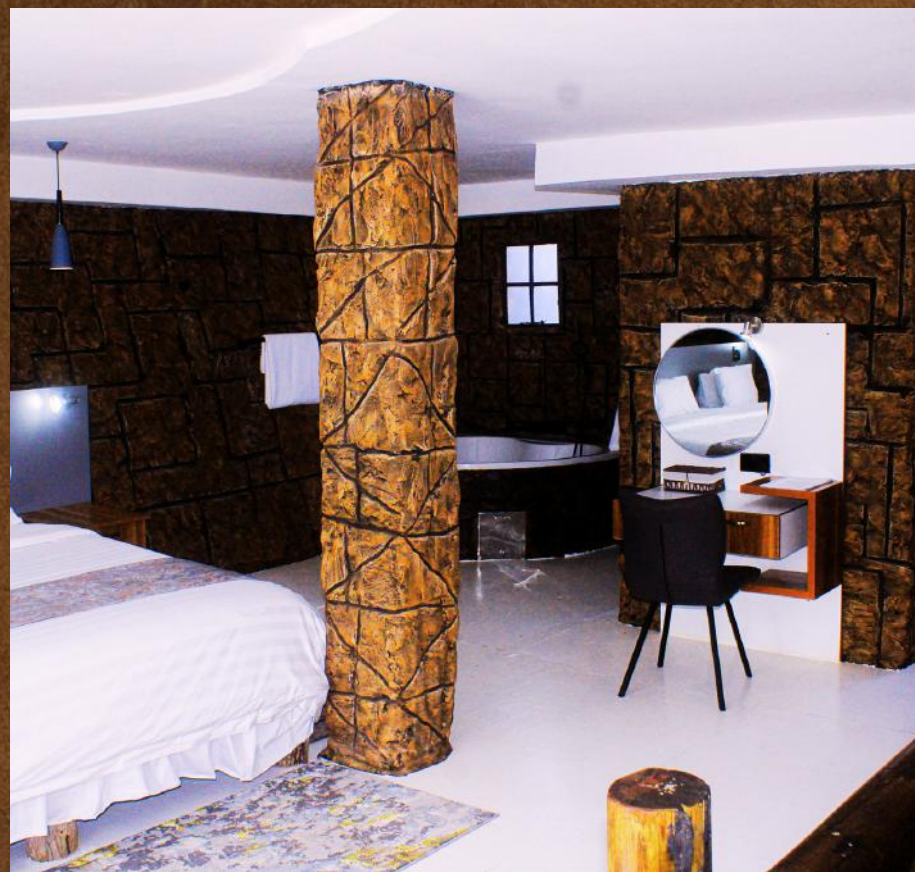
To be the leading provider of intimate and immersive experiences in Kasane, Botswana, where guests connect with nature's wonder and create lasting memories.

## Mission

To create a sanctuary on the Chobe River where guests can unwind in stylish A-frame accommodations, explore the region's natural wonders with expert guidance, and savor delicious local cuisine in an unmatched riverside setting.

# LUXURIOUS, EN-SUITE BEDROOMS

Each room boasts a unique charm, featuring a captivating interplay between interior and exterior rockery, complemented by brightly colored furnishings that infuse the space with a vibrant energy. But Rustiek Hotel isn't just about exquisite land-based accommodations. We also boast 2 innovative floating rooms, creating a truly immersive experience on the mighty Chobe.



# ROOM DESCRIPTION

- For those seeking a luxurious single-story retreat, the executive en-suite room offers a perfect haven. This spacious room features a plush extra king-size bed, perfect for a restful night's sleep.
- Unwind in Style: The en-suite bathroom features a modern open shower, providing a refreshing and invigorating experience. A dedicated dining area allows you to savour delicious meals in the comfort of your room.

## EXECUTIVE En-Suite

### INCLUDES:

- AIR-CONDITIONER
- HD TELEVISION
- FRIDGE
- BREAKFAST
- WIFI



# MORE INTERIOR IMAGES

# EXECUTIVE En-Suite



# ROOM DESCRIPTION

- Upstairs: Find a cozy bedroom haven with a luxurious king-size bed, inviting you to sink into slumber after a day of exploration. The en-suite bathroom features a serene bathtub, toilet, and basin, perfect for unwinding after a day of adventure.

- Downstairs: Descend the stairs to discover a charming living area, complete with a kitchenette for whipping up light meals or enjoying a refreshing beverage. An open shower adds a touch of modern elegance to the space.

## A - F R A M E E n - S u i t e

### INCLUDES:

- AIR-CONDITIONER
- HD TELEVISION
- FRIDGE
- BREAKFAST
- WIFI



# MORE INTERIOR IMAGES

# A - F R A M E E n - S u i t e



# FLOATING ROOMS

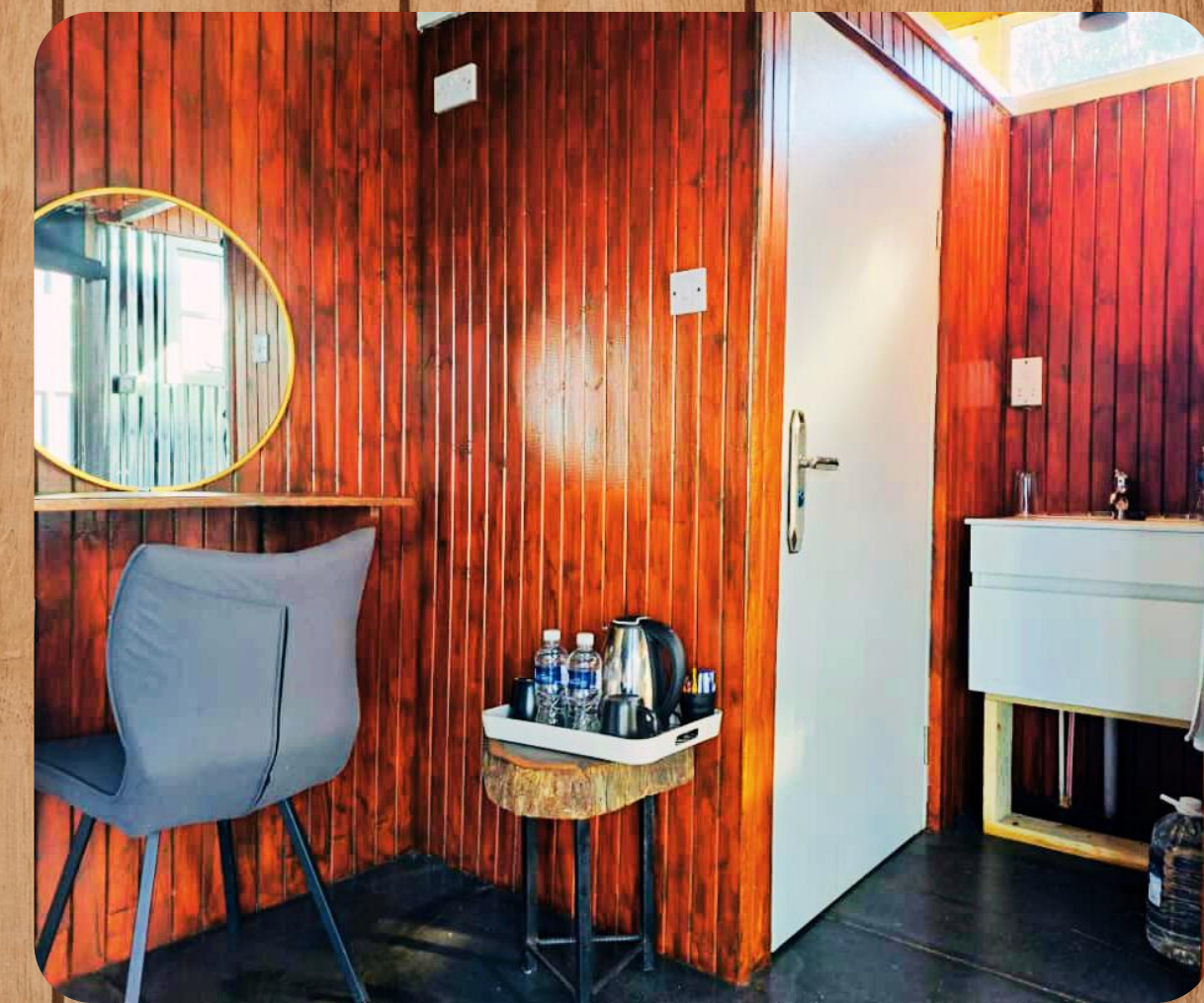
## YOUR FLOATING OASIS ON THE CHOBE RIVER!

Step onto your private terrace and be captivated by the breathtaking views of the Chobe River.

Witness mesmerizing sunrises and sunsets as the light dances across the water. Our floating rooms combine the comfort of modern amenities with the tranquility of nature

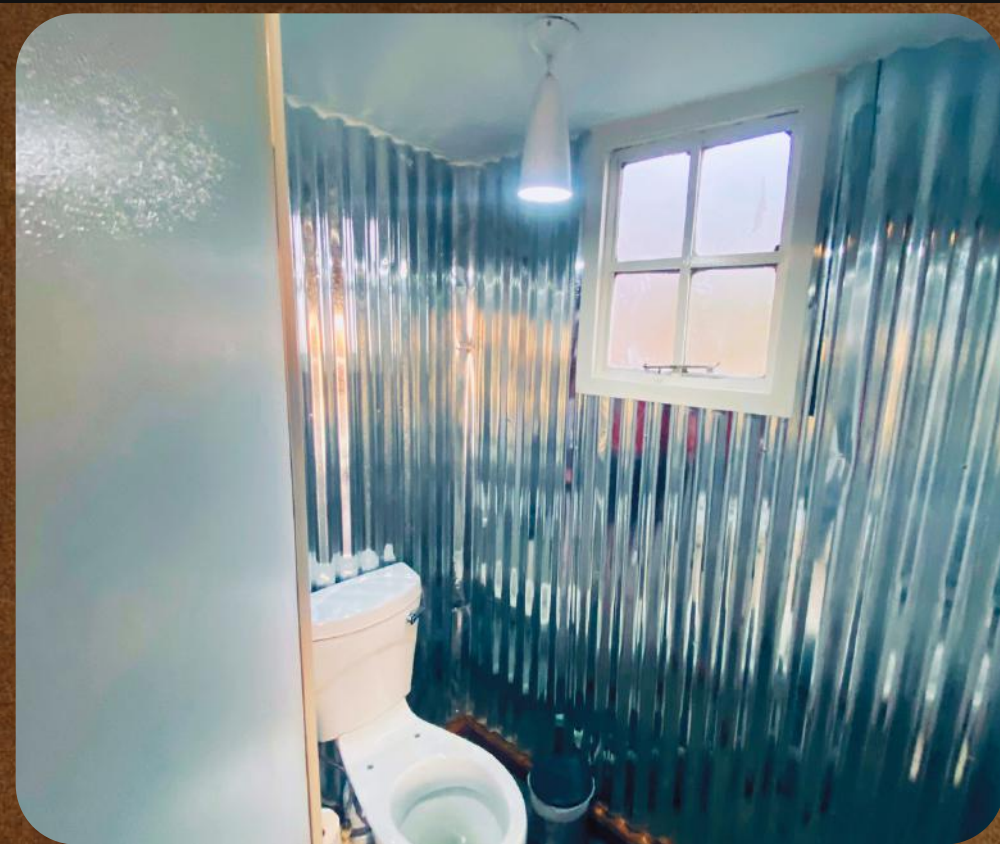
### INCLUDES:

- AIR-CONDITIONER
- TEA/COFFEE
- FRIDGE
- BREAKFAST
- WIFI



**MORE IMAGES**

# FLOATING ROOMS



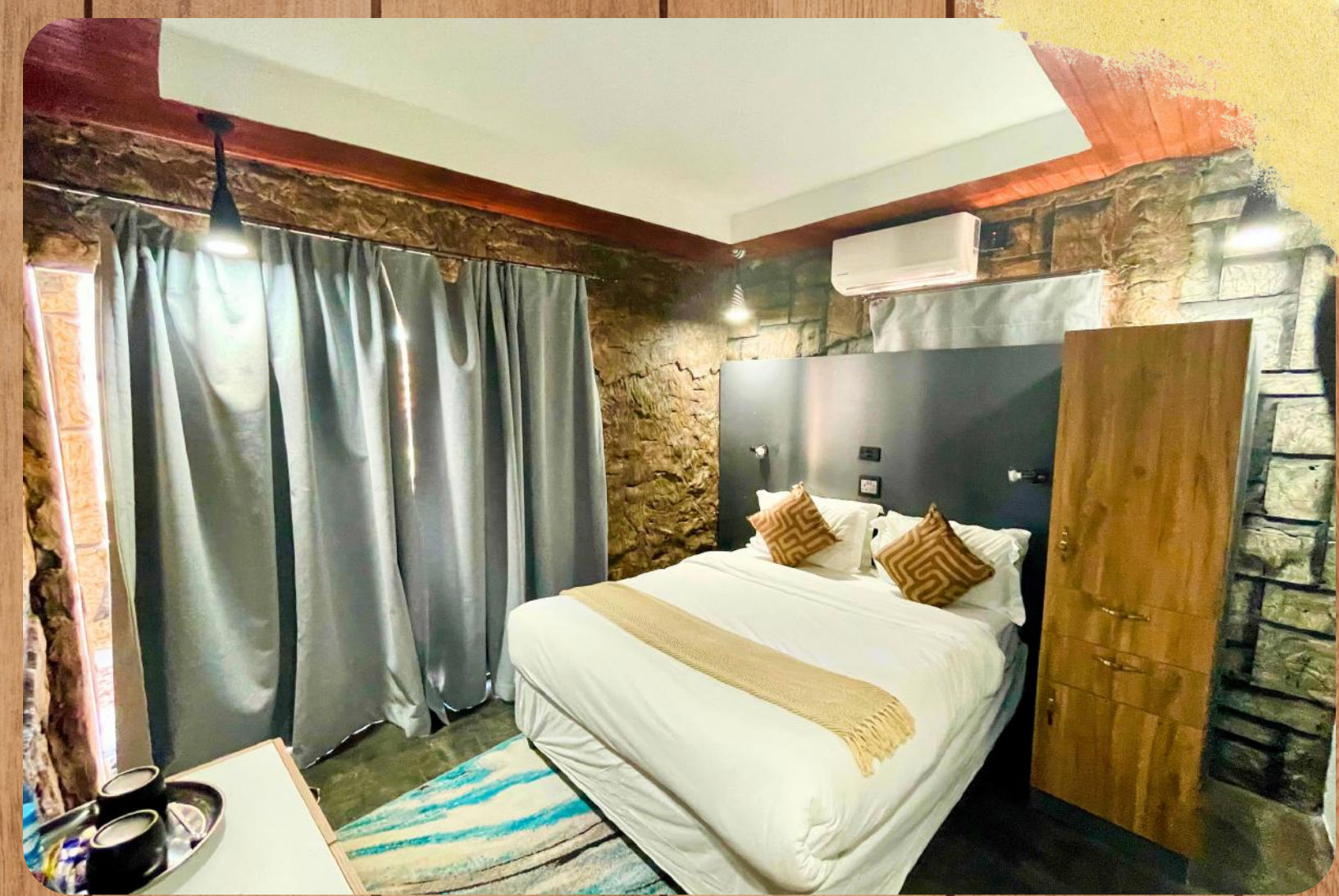
# STANDARD EN-SUITE

## A COZY HAVEN

While smaller than the executive room, the standard room offers a comfortable and convenient haven. This charming space features a queen-size bed or 2 single beds and a dressing table, ideal for getting ready for a day of exploration. The ensuite bathroom features a convenient shower, ensuring a refreshing start to your day.

### INCLUDES:

- AIR-CONDITIONER
- HD TELEVISION
- FRIDGE
- BREAKFAST
- WIFI



MORE IMAGES

# STANDARD ROOMS



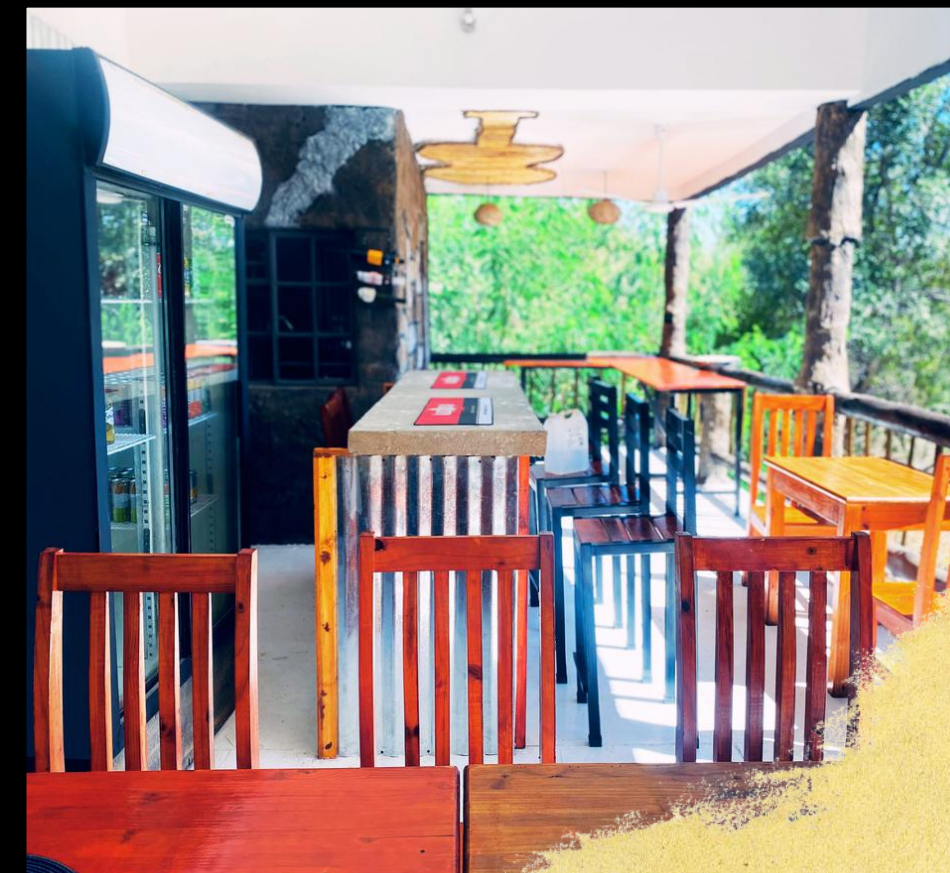
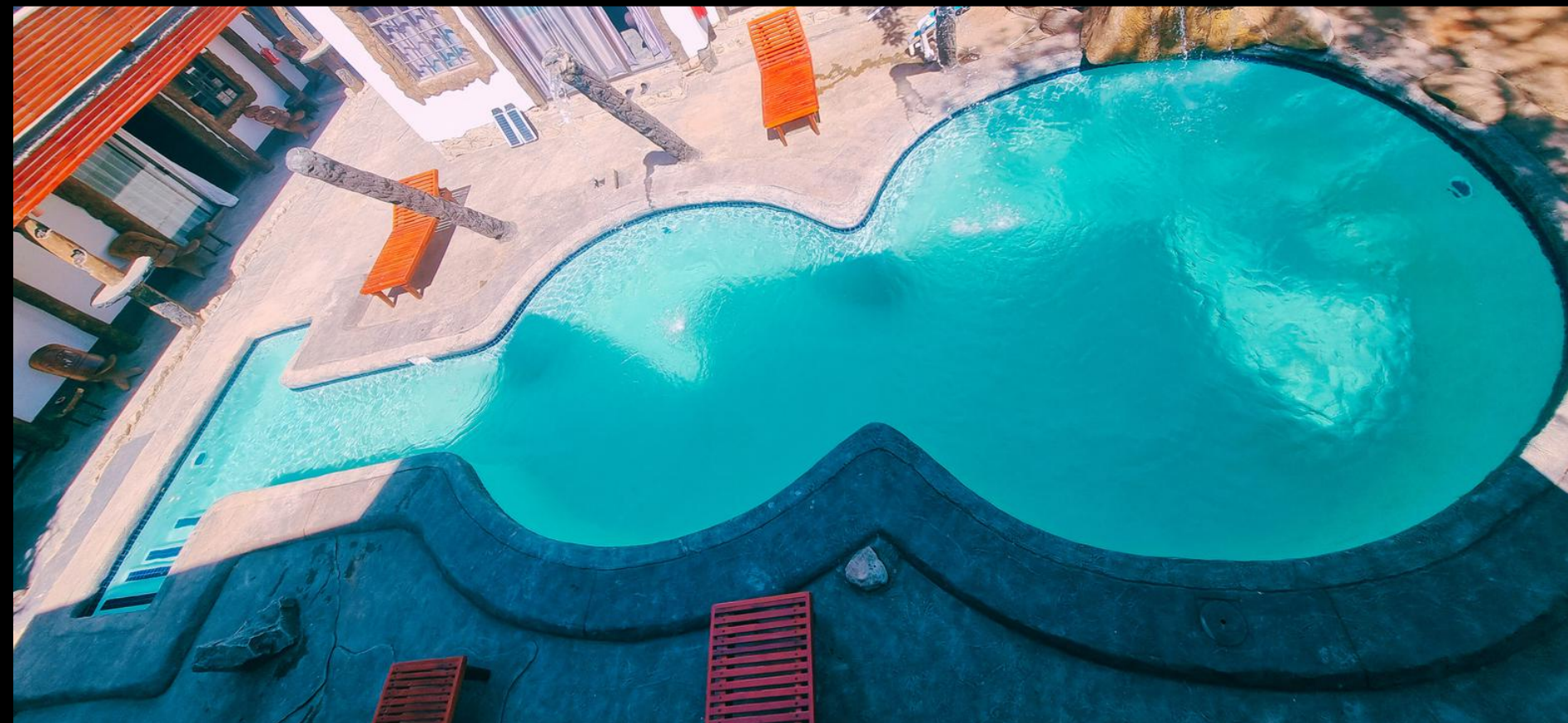
# FACILITIES

## ★ POOL AREA

Make a splash at our innovative guitar-shaped pool! This one-of-a-kind design offers something for everyone. The shallow end provides a perfect play area for families, while the deep end caters to confident swimmers. After your dip, unwind on our plush poolside seating, soaking up the sun and the atmosphere.

## ★ RESTAURANT

Elevate your dining experience at our panoramic restaurant. Perched atop, it offers breathtaking views of the majestic Chobe River. Savor delectable, local cuisine and cocktails while immersed in the stunning African scenery. Our attentive staff will ensure an unforgettable culinary journey alongside the wonders of Botswana. Our restaurant welcomes day trippers!



# COUPLE'S MASSAGE

## ABOUT

Rekindle the Romance with an In-Room Couples Massage at Rustiek Hotel!

Expertly delivered by Kitto's Beauty Parlor!

Guests get to indulge in pure bliss without leaving the comfort of their room. Kitto's talented therapists will transform their room into a vibrant spa oasis, complete with all the necessary equipment for a truly rejuvenating experience.

Each adult gets to choose one luxurious service from our enticing menu:



## MENU

- Swedish Full Body 1hr
- Deep Tissue Full Body 1hr
- Detox Massage 1hr
- Full Back Massage 40mins
- Full back Hot Stone 40mins
- Back and Shoulder Hot Stone Massage 40mins
- Back and Shoulder Massage 30mins
- Foot Massage 30mins

# ACTIVITIES: TRANSFERS

## Victoria Falls Transfers

Witness the awe-inspiring Victoria Falls on a thrilling day trip arranged by our expert concierge. Relax and take in the scenery as we handle all your transfers, border crossings, and logistics. Get up close to the mighty cascade, while knowing you can return to the comfort and luxury of our hotel by nightfall.

## Livingstone Transfers

Embark on a captivating day trip to Livingstone, Zambia, facilitated by our expert team. Relax and enjoy the ride as we arrange all transfers and border crossings. Immerse yourself in Livingstone's rich history, from iconic landmarks to captivating museums, all while our staff ensures a seamless and unforgettable Zambian adventure. Return to our hotel feeling refreshed and enriched by this cultural exploration.

# ACTIVITIES: OTHERS

## Chobe Game Drive

Dive into an unforgettable wildlife adventure with our guided game drives into the heart of Chobe National Park. Experienced rangers will lead you through diverse landscapes teeming with Africa's iconic animals. Witness majestic elephants, graceful giraffes, and powerful predators in their natural habitat. Create lasting memories as you get up close to the incredible wildlife of Chobe.

## Boat Cruise

Cruise alongside Africa's wonders on a scenic boat trip in Kasane. Glide along the Chobe River, spotting a magnificent array of wildlife – from basking hippos and crocodiles to majestic giraffe and eagles. Our knowledgeable guides will share their expertise, transforming your journey into an unforgettable exploration of Botswana's aquatic treasures.



# CONTACT INFORMATION

**STAY IN TOUCH WITH**



A-FRAME YOUR DREAMS,  
FLOAT ABOVE THE ORDINARY



PHONE NUMBER

+267 71287788 / 6240168



EMAIL ADDRESS

marketing@rustiekhotel.com



WEBSITE ADDRESS

rustiekhotel.com



PHYSICAL ADDRESS

Plot 716, Kasane, Botswana

# THANK YOU

We believe our unique offerings will create an unforgettable Kasane experience. We eagerly await your bookings and look forward to welcoming you with exceptional service in the very near future.

