

october | november 2010

# sonningcommon

magazine



THE BEST IN  
*bloom*

Now send your articles direct by email: [sonningcommonmagazine@googlemail.com](mailto:sonningcommonmagazine@googlemail.com)



## G.B. REMOVALS

House, Office & Flat moves etc.

Local Non Local

Part Load to Single item, pianos

Prompt Reliable Service

**Large Van with Tail Lift**

Contact: Gary – Sonning Common

T: 0118 924 2763 M: 0799 070 7125

**HOUSEHOLD CLEARANCES**

(REGISTERED WASTE CARRIER)

## WATER SOFTENERS

### M.P. SOFTENERS

Enjoy the benefits of soft water.

Top quality softeners supplied and  
professionally installed.

Sales, Service, Block Salt delivered

**TEL: 0118 941 0869**

**07967 009838 or**

**0118 972 3773**



Outstanding Natural Beauty

Waxing

Electrolysis

Eyelash Tinting

Eyebrow Shaping

Jessica Pedicures

Jessica Manicures

Bridal Make-up

Make-up & Lessons

Aromatherapy Facials

0118 972 3157

[www.chilternbeauty.co.uk](http://www.chilternbeauty.co.uk)

Janet Copp I.H.B.C

9 Sedgefield Close, Sonning Common

## Improve your flexibility

Designed to lengthen and strengthen  
the entire body through a choice of  
Workshops, Massage, Classes and  
One to One Personal Training

[purestretch@live.co.uk](mailto:purestretch@live.co.uk)  
07809 448 972  
[www.purestretch.co.uk](http://www.purestretch.co.uk)



## SONNING COMMON PRE-SCHOOL

GROVE ROAD  
SONNING COMMON  
0118 972 4760

We are a happy friendly pre-school  
welcoming children from 2 years  
6 months, to come and learn through  
play. We have a purpose built building  
& extensive play garden.

Morning sessions are 9.00am - 12.00pm  
Afternoon sessions are 12.00pm - 3.00pm  
After School Club sessions are 3.00pm - 6.00pm



**elements;**  
KITCHENS • INTERIORS

Visit our stunning showroom:  
8b Portman Road, Reading RG30 1EA  
Tel 0118 959 9919  
[www.elementskitchens.co.uk](http://www.elementskitchens.co.uk)

Henley Photography

Weddings

Portraits

Female  
Photographer

Tel 01189 723005

07796 214241

[enquiries@henleyphotography.co.uk](mailto:enquiries@henleyphotography.co.uk)

[www.henleyphotography.co.uk](http://www.henleyphotography.co.uk)

# From the editor



So here we are in the season of mists and mellow fruitfulness and there is as much going on in the village as ever. From French lunches to controversial planning applications, Sonning Common has it all!

Read about how Nottakwire, the village's singing group, has enriched the lives of many residents (page 25) while, on a less positive note, vandalism at the primary school has destroyed young children's work (page 3).

The village is full of interesting characters with colourful histories to match and on page 11 we begin a series of articles on one resident's unconventional childhood.

It has been great to receive so many contributions this edition, particularly from new sources. So thank you for all your efforts.

**ROS VARNES** Editor

Email me at:

[sonningcommonmagazine@googlemail.com](mailto:sonningcommonmagazine@googlemail.com)

## Contents

### 2-5 Community news:

New co-op to open in November

Pre-school grant is suspended

Chiltern Edge gets top results

### 8 Noticeboard

### 14 In Focus: the Lea Meadow development

### 19 Letters

### 22 Tom Fort

### 28 Diary Dates

#### CHAIRMAN

**Graham Thomas**

39 Woodlands Road, Sonning Common, RG4 9TD  
email: [grahampthomas@hotmail.com](mailto:grahampthomas@hotmail.com)  
tel: 0118 972 2598

#### DIARY DATES

**Helen Barker**

1 Walnut Close, Sonning Common, RG4 9DG  
email: [helen.barker@tesco.net](mailto:helen.barker@tesco.net)  
tel: 0118 972 1241

#### DISTRIBUTION

**Geoffrey Adams**

1 Woodlands Road, Sonning Common, RG4 9TD  
email: [geoffrey.adams5@btopenworld.com](mailto:geoffrey.adams5@btopenworld.com)  
tel: 0118 972 2134

#### COVER IMAGE – THE BEST IN BLOOM

Taken at Chiltern Edge Horticultural Society's Autumn Show - by Ros Varnes

## ps....

Sonning Common Magazine is on sale at the village library in Grove Road.

Annual subscriptions are also available. Contact distribution manager Geoffrey Adams. Email: [geoffrey.adams5@btopenworld.com](mailto:geoffrey.adams5@btopenworld.com) Phone: 0118 972 2134

For all advertising queries, please contact John Pearman from 18 October. Phone: 0118 972 2381 / 07794 291776. Email: [pearman@dial.pipex.com](mailto:pearman@dial.pipex.com)

Maureen Dunn asks us to say that despite her advertisement for Family Hairdressing being omitted from the last edition she is very much in business and looking forward to seeing customers old and new.

WHILE EVERY EFFORT IS MADE TO ENSURE THE ACCURACY OF INFORMATION PRINTED IN THIS MAGAZINE, THE EDITOR AND THE PUBLISHER CANNOT ACCEPT ANY RESPONSIBILITY FOR THE CONSEQUENCES OF ERRORS THAT OCCUR.

Design and artwork by:  
**tensevennine.**  
8b portman road reading rg30 1ea  
tel 07887 902 376  
[www.tensevennine.com](http://www.tensevennine.com)

COPY DEADLINE FOR NEXT ISSUE 01 NOVEMBER 2010





# Co-op re-fit to begin

The Somerfield store on Wood Lane is due be closed temporarily from 15 to 25 November for extensive refurbishment and extension, before being re-opened as a Co-operative Food store.

A spokesperson for The Co-operative said: "Investment in the Sonning Common store will completely transform it, bringing a new era in food shopping to the local community. The refurbishment will include a 50 per cent extension of the sales area, new flooring, ceiling, additional tills and eco refrigeration.

"The store will no longer stock Somerfield-branded products, but will have an increased product range and a new in-store bakery." ■

# A taste of France in Sonning Common

**The wine flowed, conversation sparked and the food just kept on coming at a special French-themed charity lunch in the village hall.**

The event on 3 September was organised by the Sonning Common Village Hall Management Committee. It raised £514 towards the village hall fund while a book sale on the day generated £80 for Oxfam.

Jill Vallis, Chrissie Phillips-Tilbury and all the members of the village hall management committee thanked all the guests and helpers at the French lunch.

"We could not have raised such an amazing figure without the generosity of Mr and Mrs Laithwaite, who donated the wine, donations of raffle prizes, including the first prize of a four-night stay in a French guest house, apples from Sue Frayling-Cork and Geoffrey Adams for the

Normandy apples flans, newly-ordered aprons for the helpers from Carl Wood, our marvellous local butcher, balloons from Jo Keys at Occasions and the Christian Community Action shop for sourcing bread baskets, vases, jugs and cutlery as well as the village lunch club for loaning us water jugs, tumblers and cutlery.

"The helpers were almost all Sonning Common residents and heartfelt thanks go to John and Mary Price for organising a fantastic slide show, Peter Rickards for the sound system, Lisa Rees and Sara Capaldi for selling raffle tickets and to the stalwart kitchen helpers and servers: Sandra Cooper-Smith, Jo Hunt, Mary Cameron, Jean Stephenson, Sylvia Dickens, Joan Comber, Anne Symons, Ken Hopcroft, Elaine Williams, Margaret Moola, Susan Russman, Valerie Northfield, Colin Davies and Barrie Greenwood." ■

**CHRISSIE PHILLIPS-TILBURY  
Sonning Common Village Hall  
Management Committee**

## LEFT:

■ The organisers of the French lunch in the village hall. From left, Geoff Ward, Jill Vallis, Chrissie Phillips-Tilbury, Mary Cameron, Joan Comber, Sylvia Dickens, Jean Stephenson, Peter Rickards, Jo Hunt and Barrie Greenwood.



# Holiday fun at Chiltern Edge

**A new holiday club at Chiltern Edge School during the summer attracted more than 80 youngsters.**

Children, ranging in age from six to 16, tried their hands at film-making, multi-sport, forest fun, dance and drama, art and craft and creative cookery. The club cost from £20 per day.

Daniel Sadler, Chiltern Edge headteacher, said: "This is a really good example of the way that our local schools work together to benefit families in the village."

It is hoped to run a similar club during the Easter school holidays. For further information contact Brenda McNulty, Extended Schools Co-ordinator. Phone: 0118 972 1500 ext 449. Email: bmcnulty@chilternedge.oxon.sch.uk

## TOP

■ Enjoying one of the craft activities available at The Holiday Club, Chiltern Edge School.

# Police news

**A Sonning Common man has been charged with indecent exposure and has been bailed to attend Oxford Magistrates Court in coming weeks.**

Three men have been caught regarding a series of shed breaks in the Sonning Common area; no other offenders are being sought.

The next series of Have Your Say meetings, where residents can meet with members of the Henley Rural Neighbourhood Police Team, will take place at the One Stop, Wood Lane, on:

- 14 October, 7-8pm
- 21 October, 3-4pm
- 11 November 5-6pm
- 18 November 3-4pm





# Vandals attack children's camp again

**The community has rallied to help since a forest camp, designed and built by schoolchildren, was vandalised three times since Christmas.**

The camp, at Sonning Common Primary School, was created by mainly four to seven-year-olds. It is used as an outdoor classroom where children follow the school curriculum while learning about the environment and developing outdoor skills.

In the latest and worst attack in July, a new £250 teepee was slashed before many of the children even had a chance to play in it. A pirate ship, which the children had fashioned themselves from wooden pallets, tyres and other recyclable materials, was burned to the ground.

The vandals urinated in boxes containing outdoor clothing and teddies belonging to the children. They also slashed open the soft toys and used the stuffing from them to start the fire.

The school believes the damage was done by older children who broke into the school through the paddock fence.

Forest Camp leader, Philippa Byrne, said she was "absolutely devastated" by the repeated attacks on the camp. "It is so demoralising for the children. They all work so very hard, in all

weathers, 12 months of the year to maintain it. Some of what has been destroyed, particularly the children's collections, are irreplaceable."

Many of the children were "visibly upset" when they saw the damage and faced the job of clearing it up, she said.

But out of something bad has come something good, according to Philippa. Primary school staff have taken home and repaired the damaged toys and donated new ones, while parents of reception children are planning to repair the teepee using patches from an old tent donated by a villager.

The Vines Farm Estate at Cane End has donated a special trolley with pneumatic tyres for ferrying materials between school and Forest Camp. This has been decorated with the Forest Camp logo by Henley Sign People, also at Cane End.

Other local people have donated outdoor clothing for the children and more are helping to build a new shelter as an outdoor classroom. The school's Parent Teacher Association is providing additional funding for the camp.

Said Philippa: "A lot of people have been shocked that this vandalism has happened here. Many of them have been stopping me in the street and asking if there is anything they can do to help. They have been really kind.

"It was a horrible thing to have happened but something really good has come out of it. Forest Camp will remain a permanent feature at Sonning Common Primary School despite the vandalism thanks to the positive attitude of its pupils, the generosity of the supporters and the vigilance of those reporting the incidents."

Villagers are asked to report sightings of trespass to the primary school on 0118 972 2105 or directly to the police on 0845 850 5505 or to phone 999 if they see a crime occurring. ■



**ABOVE:**

■ From left Lucy Jones, Michael Varnes, Archie Muncer, Katie Mulligan and Ben Maughan with the vandalised Forest Camp.

## Pre-school vows to win back grant

**At the time of writing this, our plans to build a brand new pre-school for Sonning Common are in a state of limbo.**

As you may have read in local papers, we were greatly distressed to learn that the £450,000 grant we were awarded this year to build the new pre-school in Grove Road has been suspended, while central government reviews its budgets.

It may a temporary suspension, or a permanent withdrawal. We don't know yet.

But we do have some good news. Planning permission for the new building has been approved, so when our funding is eventually secured, construction can begin immediately.

We are still a long way away from raising the £12,000 we need to furnish and equip the new building but thanks to the support of local businesses, parents and other local people, we are now almost a quarter of the way towards our target.

We would particularly like to thank Davis Tate, Johnsson Matthey, Forresters hair salon, Hobbs of Henley, Beville estate agency, The Bird in Hand, The Unicorn, Sonning Common Garage, Palmer Stables, Tandoori

Connoisseur, Carl Wood the butcher, Mapledurham House and Beale Park. In tough economic times such as these, support for charities like ours often dwindles, so we really appreciate every contribution.

We will continue to fight hard to persuade the government not to withdraw our grant. But whatever the final decision, we would like to reassure people we will not give up on our plan to replace our current building, which, we believe, is now too small for the village and is beyond repair. ■

**NIKKI HAMPTON**  
**Sonning Common Pre-School**  
**fundraising committee**



# What a lot of lovely blooms

Early summer rain, followed by a warm June and July, brought out the best in Sonning Common's gardens this year.

The evidence of this was clear at the Chiltern Edge Horticultural Society's autumn show on 4 September at Chiltern Edge School.

Winner of the best exhibit in show for his vase of mixed dahlias was Keith Hedges, from Hazelmoor Lane, Gallowstree Common. Frank Williams received most points for flowers, vegetables and fruit. He also took the most prize money at the show while Peggy Hamblin won most points for floral art, David Brewer for roses and Peter Mason for vegetables.

Trio Val Mundy, Betty Peet and Ann Holt won the pot plant class while Martin Hedges was judged master gardener for three kinds of veg. Brothers Max and Harry Miller gained most points in the children's classes for their snowman and dinosaur-themed cakes.

Ronald and Vera Strong, of Green Lane, won the best front garden in Sonning



Common competition, as judged by the horticultural society.

Their colourful garden, brimming over with flowers, is testimony to their dedication as gardeners. The couple have lived in the village for 49 years. In 1971 they built their bungalow in the garden of their former home at the bottom of Green Lane, near the fish and chip shop.

Said Vera: "We have always loved gardening. It is a tremendous relaxation. When we're out there people stop and chat and you can pass the time of day with them." ■

## Other winners of the best front garden competition were:

**2nd – Bob and Sylvia Newnham,  
Reades Lane**

**3RD – Roger and Carol Parker,  
Woodlands Road**

**4th – Mr and Mrs John Lambourne,  
Kennylands Road**

**5TH – Pamela Franklin**

**6th – Margaret Moola and Elaine  
Williams, Sedgfield Close**



## TOP ROW FROM L-R:

■ This year's Chiltern Edge Horticultural Society winners were, from left, Val Mundy, Pete Mason, Jean Mason, Ann Holt, Betty Peet, Sara Batting, Maureen Stevens, Ronald and Vera Strong, Frank Williams, Keith Hedges, Martin Hedges. Front, from left, Harry and Max Miller.

■ Ronald and Vera Strong, winners of the best front garden competition.

■ From left Harry, six, Ed and Max Miller, seven, their prize-winning cakes.

## BOTTOM ROW FROM L-R:

■ Keith Hedges, who won best exhibit in show for his vase of mixed dahlias.

■ Sara Batting, winner of the photography competition.



# Local students are top dogs

## Local secondary schools are celebrating record GCSE results for 2010.

Chiltern Edge School recently announced that 77 per cent of its students obtained five GCSE passes, with A\* to C grades, while 67 per cent of pupils achieved five A\* to C passes in English and mathematics.

A total of 82 per cent of Chiltern Edge students obtained a GCSE qualification in modern foreign languages.

The results confirm the specialist language college, which serves many families from Caversham and the north of Reading, as one of the highest achieving community schools in Oxfordshire.

Headteacher Daniel Sadler commented: "It was really significant for us that our results on the key measure of five A\* to C passes for English and maths were better than all our local competitors.

"I am delighted for the students and staff who have worked so hard to achieve these fantastic results. I would also like to thank the parents who have

provided such excellent support over the last two years."

It was a similar success story at Gillotts School in Henley where 20 former Sonning Common Primary School children are currently on the register.

A total of 85 per cent of Gillotts students achieved the benchmark of five or more passes at grade C and above.

Headteacher Catharine Darnton said:

"These results are the best that Gillotts has ever achieved and we are thrilled to see the continued improvement in standards.

"For the students, these results represent a great deal of individual success, which will stand them in good stead as they move forward with their education and future careers."

Chiltern Edge will be holding open mornings for Year 6 children and their parents on 5 and 6 October from 9.15 to 10.45am. ■

### BELOW:

■ Chiltern Edge School students celebrate record exam successes.



# Goodbye, farewell and hello

After many years of dedicated service, Sonning Common Primary School has said goodbye to teachers Val Harris, Linda Hanks and Fran Bodenham who retired in July. We wish them well and hope they have many happy years filled with sunny days.

We also say goodbye to Jo Price, Kirsty Gordon and Caroline Winton who have left for challenges in other schools. We wish them all the best in their new ventures.

All of the leavers filled the school with their enthusiasm for creating an environment where only the best was good enough and have left many many pupils with fond memories of their time at Sonning Common Primary School.

And so we say 'hello' to three new teachers: Tim Coates, Merryn Ough and Judith Walmsley as well as our new deputy headteacher Flora Barton. They have made an excellent start and are already contributing towards the success of Sonning Common Primary School. ■

**CHRIS HIRST**  
Headteacher, Sonning Common Primary School



■ Chris Hirst



## Adam's Pest Control

Professional Pest Control in Sonning Common  
Rats, mice, rabbits, squirrels, moles, insects, foxes.

Available 7 days a week.

BPCA Qualified and Fully Insured

Call 0118 9723709 or 0784 9342690

[www.adamspestcontrol.co.uk](http://www.adamspestcontrol.co.uk)



## COLLINS, DRYLAND & THOROWGOOD LLP SOLICITORS

announce that as from 4th October 2010

Mrs Wendy Holmes will be working from our office at  
**12 Hart Street Henley-on-Thames RG9 2AU**

Telephone: 01491 572323

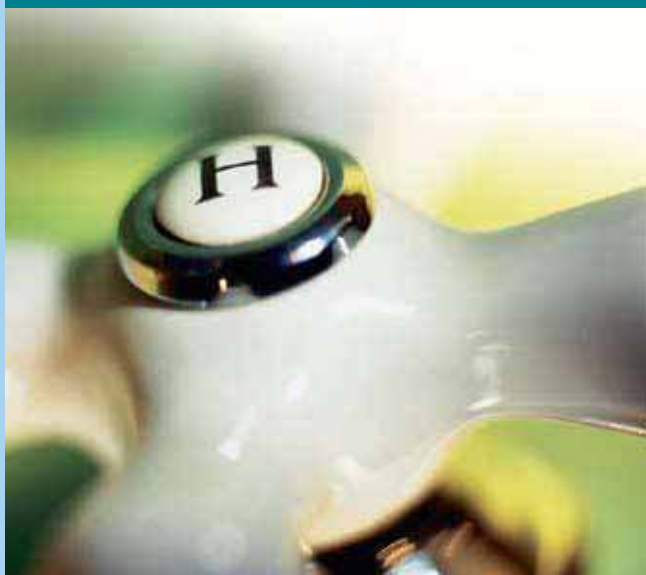
email: [wendyholmes@collins-dryland.co.uk](mailto:wendyholmes@collins-dryland.co.uk)

## Complete Bathroom Refits

- + Including Tiling
- + Full Central Heating Installation
- + Boiler Changes
- + Power Flushing
- + Oil boilers and Gas boilers
- + For all your plumbing needs

 **Call Glenn**

**07515 168 902**



**Premier**  
Letting & Management  
[www.PremierReading.co.uk](http://www.PremierReading.co.uk)

Premier Letting are a family run letting specialist for the Reading area, based locally in Sonning Common

Call Dan or Kate Williams for expert advice in letting and property management.  
Over 20 years experience between us

**0118 958 9666**

**10% reduction in fees  
for all Sonning Common  
residents**

**7% Full management  
£350 Tenant introduction**



Every product. Every store. Everywhere.

Whatever you are buying,  
find the best price with Eveex.

See online for special offers and discounts  
from leading high street shops.

[www.eveex.com](http://www.eveex.com)

## BUY LOCAL APPLES&PEARS

+ 60 varieties + APPLE JUICE + HONEY+

**OPEN**  
Wed  
to Sun  
10am-  
6pm

**Cross Lanes Fruit Farm**  
Mapledurham, RG4 7UW  
Tel: 0118 972 3167



Join A4074 to Reading at Cane End, first right, right again.

Farm shop is on the road to Goring Heath.

\* APPLE DAY SUNDAY 10 OCTOBER \*

[www.crosslanesfruitfarm.co.uk](http://www.crosslanesfruitfarm.co.uk)





## Functional Physio



Sonning Common Health Centre  
Chartered Physiotherapists  
Jo Pereira MCSP  
Catherine Matthews MCSP

Flexible appointments  
Clinic: 01189 722 745  
[www.functionalphysio.co.uk](http://www.functionalphysio.co.uk)

Back pain  
Neck pain  
Sports injuries  
RSI  
Joint pain  
Sprains  
Strains  
Headache  
Pre/Post op  
Pre/Post natal  
Pilates



## GET KITTED OUT FOR CHRISTMAS

We have a wonderful selection of as good as new designer Christmas party dresses and handbags at affordable prices. Come and get fitted out for that special party without breaking the bank!

Looking for Christmas gifts? We have a fantastic Spa range and Spa memberships that would make any girl's dream present.

We also have affordable jewellery and many more stocking fillers.

How about trying out one of our delicious Christmas Hampers which are sourced from local businesses?

**There is something for everyone at this event.  
DON'T MISS OUT POP INTO:**

**Sonning Common Village Hall**  
Sunday 7th November  
10am until 4pm



**Property Maintenance**  
Building, Decorating & Cleaning Services

- Office Cleaning
- Painting & Decorating
- New Kitchens
- New Bathrooms
- Wall & Floor Tiling
- Plumbing & Heating
- Alterations & Renovations
- Carpet Cleaning

**One Stop Property Maintenance**  
T: 0118 9723644 • M: 07770 607876  
E: [info@ospm.co.uk](mailto:info@ospm.co.uk) • [www.ospm.co.uk](http://www.ospm.co.uk)

## VILLAGE YARNS & OCCASIONS

**For Knitting Yarns, Sewing bits & bobs**

**All Your Dry Cleaning, Shoe Repairs**

**And Alterations**

**tel 0118 9723358**

**Greeting Cards, Party Items**

**Balloons, Banners & Bows**

**Gifts for Friends & Family**

**Now TOGETHER at OCCASIONS in Wood lane, Sonning Common**

*Family Hairdressing*  
*In the comfort of your own home*

**Ring Maureen on:**  
**0118 972 1074**

*Fully qualified in all aspects of hairdressing*

### Jefferies Consultancy Services Ltd.

#### Accountancy Services

*Specialising in South Oxfordshire and Reading*

- Self-Assessments
- Business Advice
- Corporation Tax Returns
- Accounts
- Payroll
- VAT

**Excellent customer service & Free initial consultation**

**Tel: 0118 9722611**

**Email: [keith.jefferies@jcslimited.co.uk](mailto:keith.jefferies@jcslimited.co.uk)**



New adult education workshops at Chiltern Edge School for the autumn term are:

- Web Design
- Drawing People
- Face Painting
- Plant Propagation
- Pedicure & Foot Care

**Saturday 16 October, 10am – 4pm**

and

*Speak Easy: develop your public speaking*

**Saturday 6 November  
10am - 1.30pm**

To enrol, for more information, or to request a copy of the 2010/11 brochure, please telephone 0118 972 3362 or 0845 351 0646 or visit [www.oxfordshire.gov.uk/adultlearning](http://www.oxfordshire.gov.uk/adultlearning)

Some continuing classes still have places available – please telephone to find out more.

**JACKIE ASHKETTLE**  
Adult Learning  
Oxfordshire County Council



## Learn to play Bridge

Chiltern Edge Bridge Club is holding a free five-week course for beginners.

One-hour lessons will start on Tuesday 5 October at Christ the King Church Hall, Sedgewell Road, Sonning Common at 6.30pm. There is no need to book - just turn up on the night.

Following the five-week introductory course, the intention is to run a 10-week course for those wishing to continue to learn. This would cost £15.

For further information call Teresa Hamilton on 07721 753076 or 0118 9696301.

TERESA HAMILTON  
Chiltern Edge Bridge Club

## NEWS FROM THE LIBRARY:

For Oxfordshire Libraries, October is Family Learning Month, where families are encouraged to use libraries together to find out something new. This is quite hard to organise with no extra funding!

On Friday 8 October John Price from the Berkshire Family History Society will be on hand from 9.30am to 4.30pm to offer advice on using computers to trace your family tree (just drop in with your questions).

Following the success of our Summer Saturday Specials in August, we have a Hallowe'en Saturday Special on 30 October at the usual time of 10 o'clock. Expect to hear stories of a ghostly nature, followed by an appropriate craft activity. (Suitable for children aged four to eight years).

For further information about these, or any other library activities, call in at the library in Grove Road, or phone 0118 972 2448.

**Rosemary Dunstan**  
Library manager

## BILLY LIAR!

Chiltern Players' next production will be *Billy Liar*, Keith Waterhouse and Willis Hall's comedy drama about working class undertaker's clerk Billy Fisher who escapes the boredom of his daily grind by fantasy trips to a mythical land where he is always the hero.

Unfortunately, neither his family nor his two fiancées are sympathetic which leads to some comedic yet highly affecting scenes.

Performances will be at Peppard Memorial Hall, 1 to 4 December at 8pm. Tickets at £7 each will be on sale nearer the time from Occasions, Wood Lane, Sonning Common.

**CHILTERN  
PLAYERS**



## Fun & games at orchard open day

This year's orchard open day at Cross Lanes Fruit Farm, Mapledurham, is to take place on Sunday 10 October. This popular, free event is held every year to celebrate National Apple Day. It regularly draws a crowd of more than a thousand people who are keen to view and sample the 50 and more varieties of apples at Cross Lanes.

Attractions include apple games, including a contest to see who can get the longest piece of peel, and the annual charity conker challenge run by the Goring, Woodcote and District Lions Club.

Visitors will be able to learn about the work that goes into producing apples through regular, guided walks; see how fresh apple juice is made; and find out about the vital role that bees play in apple-growing.

Advice from experts will be available on pest control and pruning while stalls will be selling apple pies, cakes, jams and jellies. Tea and refreshments will be available all day.

**The open day will run from 10am to 5pm.**



## Revels Film Club returns

**REVELS FILM CLUB** evenings are starting again at Peppard War Memorial Hall. We hope everyone will be coming to the next season for another set of enjoyable evenings with friends at unbeatable value.

The price remains as before – just £10 which includes supper in a bowl and a glass of wine with the opportunity to purchase more.

### Friday 15 October: The English Patient

Made in 1997 and winner of nine Academy Awards, it stars amongst others Ralph Fiennes and Juliette Binoche and is set at the end of World War Two. The story is a moving account of a young army nurse looking after a badly burned pilot. As he slowly recovers a passionate love affair emerges from the past.

### Friday 19 November: The Italian Job

This is the original, hilarious 1969 film about a robbery carried out in Rome outwitting the Italian police with the aid of a fleet of minis. The cast includes Michael Caine, Noel Coward, Benny Hill, Irene Handl and John Le Mesurier. A riotous evening.

**Doors open at 7.15pm. Tickets are available now from**

Geoff Pitcher, Chiltern View, Gallowstree Road, Peppard Common, RG9 5JB.

**Phone: 0118 972 3050. Email: [peppardrevels@mac.com](mailto:peppardrevels@mac.com). [www.peppardrevels.org.uk](http://www.peppardrevels.org.uk)**

**Because of the need to know numbers for the meal we strongly recommend you book early. Part of the Revels profits go to supporting the Peppard War Memorial Hall.**

## Want to join an orchestra?

As a Sonning Common resident I'm constantly amazed at the range of interest groups and services we have in the village. Did you know that we have an orchestra too?

We're looking for new members, particularly strings and the occasional wind or brass player.

We meet at Chiltern Edge School every Tuesday at 7.30pm. Members can come along for the joy of playing serious music or to gain experience and build up confidence.

One recent new member had played viola at school but hadn't played for many years. We can provide the environment for him to build up confidence and perhaps move on when he feels ready.

Another recent joiner has young children and, although she's an experienced player, she can't guarantee to get to rehearsals on time or every week. We can accommodate this level of commitment.

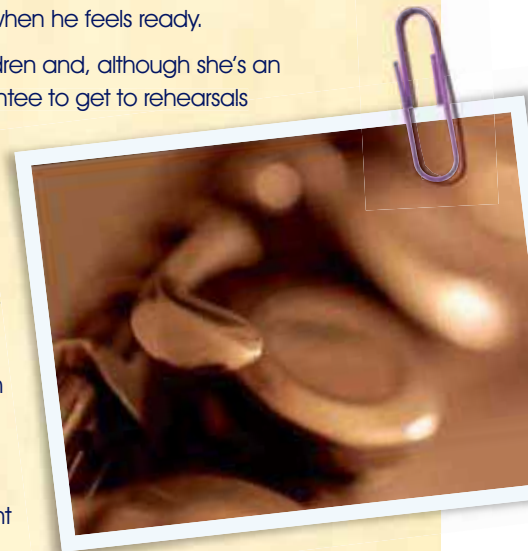
Some members have changed instrument as we can allow them to familiarise themselves with a different instrument in a supportive situation.

Other local orchestras have very high standards and pressure is on players to perform for high-profile concerts. We can offer support from more experienced players and an excellent teaching conductor and leader.

Our members come from as far afield as Chalfont St Giles, Ascot, Slough, Fleet and Camberley. They clearly feel that we're worth it.

If you're interested in joining us, please look at the website: [www.chilternedgeorchestra.org.uk](http://www.chilternedgeorchestra.org.uk) or phone Ruth Winchester on 0118 9722 164.

**RUTH WINCHESTER**  
**Chiltern Edge Orchestra**



# Woods & Langton

## PURPOSE MADE HARDWOOD & SOFTWOOD JOINERY

- BARS      ➤ DOORS      ➤ SASHES
- WINDOWS   ➤ WORK TOPS   ➤ STAIRCASES
- MOULDINGS      ➤ CONSERVATORIES

**MILLEY LANE • HARE HATCH**  
**READING • BERKSHIRE RG10 9TH**  
**TEL / FAX**  
**0118 940 4948**  
e-mail: [sales@woodslangton.go-plus.net](mailto:sales@woodslangton.go-plus.net)  
Website: [www.woodsandlangtonjoiners.co.uk](http://www.woodsandlangtonjoiners.co.uk)

MEMBER OF THE GUILD OF MASTER CRAFTSMEN

## MEB'S Decorplus

Free Estimates

Maryella Brown

General Buildings Contractor

Decorating to Complete Home Improvements

Sonning Common

Tel: 0118 9721442 or Mobile: 07920 092875

Email: [mebs.decorplus@btopenworld.com](mailto:mebs.decorplus@btopenworld.com)

Website: [www.mebsdecorplus.co.uk](http://www.mebsdecorplus.co.uk)



## Foster Interiors

The Local Soft Furnisher

## CURTAINS

### UPHOLSTERY & LOOSE COVERS

Made to the highest standards  
from an extensive range of fabrics  
brought to your home.

Complete fitting and advisory service.  
Curtains hung and dressed, ensuring complete  
satisfaction – Most competitive prices

**Telephone: 01491 680291**

*for reliable and personal service*



## Colin Porteous Of Sonning Common



## Taxi Service

**0118 972 2193**

# Beville

ESTATE AGENCY

Providing a complete  
property service linking  
buyers and sellers,  
facilitating fast, successful  
and hassle-free moves in  
South Oxfordshire and  
North Berkshire...

Phone us for a free valuation

**01189 24 25 26**

[www.beville.co.uk](http://www.beville.co.uk)

28, Peppard Road, Sonning Common  
South Oxfordshire, RG4 9SU  
[info@beville.co.uk](mailto:info@beville.co.uk)



## EVERYTHING IN THE GARDEN

Established 1985  
Now in Stoke Row

*All types of design, construction,  
maintenance and improvements.*

**Tel: 01491 641311**  
**Mob: 07810 112411**



# That's one way to spend a childhood!

## BELOW FROM L-R:

- Helen James, with son Charlie, five, and husband Chris.
- Paddington being built
- Helen, left, with her sister Justine on the French canals.
- Paddington under sail.



**Not many people have enjoyed as unusual a childhood as village resident Helen James from Woodlands Road. At the age of 11 she left England with her nine-year-old sister, her 38-year-old mother and father, aged 36, to sail around the world - in a boat they built themselves.**

**The adventure, she says, made her everything she is today and she would do it again, given the chance, with her own family – husband Chris, son Charlie, five, and their new baby due soon.**

**Helen has many tales to tell and her family's story is truly inspirational. Here she tells us how it all began.**

### The story begins in 1972 ...

"My parents owned a repair garage and petrol station in Yapton, West Sussex. Dad was a mechanic and did the repairs, while Mum split her time between looking after the pumps and caring for my sister, then one, and I, aged three, in a baby den in the office.

Mum and Dad ran the business for eight years. Then one day, Dad came home and said to Mum, 'I'm in a rut and I want to get out. We need to see the children growing up. I think we should sell everything and sail around the world'. Mum said, 'Great',... so that's what we did.

We sold our house and cars to buy two small static caravans (one for sleeping in and the other for living in) and went to live on a tomato and lettuce farm for three years while Mum and Dad built the boat.

The boat started life as a simple fiberglass shell, so they embarked on the task of fitting everything to it – from the masts to the keel.

They had no idea what they were doing at first, but with the help of some basic instruction diagrams and a lot of blood, sweat and tears, it started to come together.

As they were working on the boat itself, it occurred to them that they knew nothing about sailing (it's a family trait to dive in with both feet first, then learn how to swim!). So, they then set about learning the craft and enrolled on a Yachtmaster course.

Mum was very good at maths, which helped the navigation side of things, but Dad, at that time, couldn't read or write. As it later transpired, he was severely dyslexic, a fact we only discovered when I was tested for the same condition as a child. In the end he had to take all his Yachtmaster exams orally.

After three-and-a-half years of study, Mum and Dad both passed the theory course and so, after a couple of practical exercises sailing around the south coast, they decided we were ready to go.

On 5 May 1980, we left England bound for Le Havre with everything we owned on the boat which my sister and I had named Paddington. She was a 34ft double-masted boat with a subdivided cabin where we cooked, lived and slept. Paddington bear's love of marmalade is well known, so when fate landed us with a set of orange sails for the boat, we knew we'd chosen the right name for it!

By now, I was 11 and my sister Justine was nine. While the preparation for the journey had been an adventure in itself, when the time came, neither of us wanted to go! – a feeling shared by my father as it turned out. But having endured years of sacrifice to make the dream come true, it was Mum who made sure we carried it through. And so our adventure began ...

Before we left, Mum and Dad bought us all the school books they thought we would need. Mum continued our education in a traditional sense, while Dad taught us all about the practical side of sailing and living on a boat - like how to run an engine, service a winch and put up a sail. It only occurred to us later on that he was probably learning while teaching us!!

We thought better than to go around the Bay of Biscay on our maiden voyage, as it's notoriously dangerous to sail, and opted instead for the canals of France. We took the masts down in Le Havre and travelled through the Canal de Seine to Paris and later on to the Canal de Bourgogne which, at that time, had 360 hand locks.

Needless to say, this involved a fair amount of physical labour, so my dad (no doubt to further our waterborne education!) got my sister and I to take turns to operate the hand locks. In the morning, one of us would ride our bike along the towpath and operate the locks, while the other would study. In the afternoon we swapped around. Our curriculum had quite a bit more PE in it than most I imagine.


We carried on through the French canal system to Lyon and on to Port St Louis near Marseille where we put up the masts again to sail around the south coast of France - Cannes, St Tropez, Antibes and Nice.

Our next stop was the Italian coast, eventually arriving in the port of Civitavecchia near Rome where we moored for a month to visit my mother's Italian relations in Marta in the region of Viterbo. Nine generations of them became our hosts in a village where no one spoke a word of English and my mum only had basic (and very rusty) Italian to communicate with. Still, the international language of wild hand gestures, talking loudly and vino tinto prevailed."

**To be continued.....**

**PICTURE FRAMING**  
**SMALL LOCAL WORKSHOP**  
*Work carried out for local gallery*

Complete framing service  
 Canvases stretched  
 Mounts cut for existing frames  
 Old photographs restored  
 Local collection/delivery  
*Contact Colin Ward 0118 972 2075*

  
**Oak Grove**  
**Garden Services**

LANDSCAPING (HARD OR SOFT)  
 FENCING • TURFING • PATIOS • HEDGING  
 WATER FEATURES

***James Watkins***

'Oak Grove' • 13 Grove Road • Sonning Common • Berkshire RG4 9RH  
 Telephone: 0118 972 2659



**Sonning Common Primary School**  
**Christmas Fair**

 **Saturday 27th November**  
**12 noon to 2.30pm**  
 Come and take a ride on the  
 Little Red Train to visit Santa in his grotto.



Christmas raffle, bottle tombola, homemade crafts,  
 refreshments, mulled wine and much more!  
 Entry 50p



 **JJC Electrical Services Limited**  
*Professional Reliable and Local*

**Sonning Common based**  
**Jerry Cole**  
 Tel: 0118 972 1110  
 Mob: 0783 434 6487  
 E-mail: [jjcelecsltd@tiscali.co.uk](mailto:jjcelecsltd@tiscali.co.uk)  
 Website: [www.jjcelecsltd.co.uk](http://www.jjcelecsltd.co.uk)

- Fault diagnosis, repair and rewires
- New installation work
- Fuseboard changes
- Lighting advice and installation
- CCTV Installation
- Gate Automation

  
 Approved Contractor  
[www.elec-sa.co.uk](http://www.elec-sa.co.uk)

**Kidbys**  
**Sheds & Timber Buildings**

**Tel: 0118 972 33 80**  
 Kidbys Yard, 28 Kennylands Road  
 Sonning Common, Reading, RG4 9JT  
[www.kidbys.co.uk](http://www.kidbys.co.uk) Fax: 0118 972 10 02

**Computer Problems?**  
*Is your PC outdated, misbehaving, virus infected?*

Fault Diagnosis, Maintenance & Upgrades,  
 Data Recovery & Migration, Virus Cleaning,  
 Networking, Broadband and much more.

---

**Call Robin Piercey**  
 at Influential Computers on  
**01491 680036**  
 or visit [www.influentialcomputers.com](http://www.influentialcomputers.com)

  
**T.C. FULLER**  
**PLUMBING & HEATING**

Fully qualified and insured, local and reliable.  
 Gas safe registered.  
 Installation, service, maintenance and repair.  
 Registered for unvented hot water & wras. Free estimates.

**Tel: 0118 9724097**  
**Mob: 07800 914 880**

   
 225032 225032

From 1<sup>st</sup> April 2009 CORGI registered engineers were required to transfer to the  
**GAS SAFE** register

**GRAHAM'S**  
**MAINTENANCE**



Painting, Decorating	Door & Window Fitting
Plumbing & Fitted Bathrooms	Wood & Laminate Flooring
Floor & Wall Tiling	Sheds – Supplied & Fitted
Fascias, Soffits	Garden Maintenance
Guttering, Flat Roofing	Fencing & Decking etc.

**FREE ESTIMATES**  
**0118 972 3114**



*Robin James*  
**OPHTHALMIC  
OPTICIANS**



**Robin James & Partners**  
44 Church Street  
Caversham Reading

**Tel. (0118) 947 2099 (Opposite Caversham Waitrose)**

- ▶ Never Knowingly Undersold!
- ▶ Best prices on Frames & Lenses
- ▶ Glaucoma testing & Diabetic screening
- ▶ Computer assisted vision examination
- ▶ Budget to Top Designer Name Frames
- ▶ Gucci Nike Calvin Klein DKNY Silhouette
- ▶ Emergency Service
- ▶ Varifocal Specialists
- ▶ Latest Contact Lens
- ▶ Over 1000 frames
- ▶ Reading's longest established Independent Opticians

**Julian James BSc(Hons) MSc MCOptom**  
**Ferdi Monterio BSc(Hons) MCOptom**  
**Robin James FBOA FCOptom**



**C. JONES  
PLUMBING  
& HEATING**

All aspects of Plumbing &  
Heating work undertaken.

ALL WORK GUARANTEED

**TELEPHONE:**  
**0118 972 3394**  
**MOBILE:**  
**0771 110 9077**

**WEE-COT SEATING**

*Upholstery, Loose Covers,  
Replacement Cushions, Chair Caning,  
French Polishing & Furniture Repairs*  
**LIZANNE SMITH Tel: 0118 972 4560**

Have you friends and relatives coming to stay for that  
family occasion?

Take advantage of the comfortable accommodation available at...

**CHERRY GARTH**

The Hamlet, Gallowstree Common  
**BED & BREAKFAST**

Well appointed ground floor double-bedded room with en suite.

**Contact: 0118 972 2921**

**IAN'S  
VALETING SERVICE**

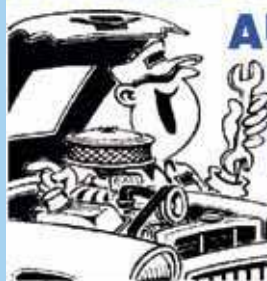
**Fast • Friendly • Reliable**

**FULL VALET £25**  
(polished with buffer – extra £5)

Will pick up and return  
spotless inside and out

**Call**  
**07597 081927**

**Mike Farina  
AUTO SERVICES**



**SERVICING**

**REPAIRS & WELDING**

**MoT TEST ARRANGED**

**COMPETITIVE RATES**

● **ALL MAKES OF VEHICLE UNDERTAKEN** ●

21 SEDGEWELL ROAD • SONNING COMMON  
Tel: KIDMORE END 0118 972 4036

**SPRUCE MAINTENANCE SERVICE**

For all your property maintenance requirements  
including, decorating inside and out, paper  
hanging, wall & floor tiling, carpentry, hand  
painted kitchens and furniture, water damaged  
ceilings & Insurance work. Hedge and grass  
cutting services.

**ROB SMITH**  
**TEL: 0118 972 4560**



**VILLAGE  
BARBERS**

**0118 972 3930**

**24 PEPPARD ROAD  
SONNING COMMON**

**10% OFF WITH THIS VOUCHER**

**CHILDREN'S PLAYROOM**

**CUTS - £10.00 GRADES - £8.00 CHILD CUTS £9.00**

**CUTS & BLOW DRY - £10.00 RESTYLE - £15.00**

**SENIOR CITIZEN - £7.00 BEARD TRIM £4.00**



BY ROS VARNES and CRAIG HENDERSON

# WE'LL BUILD FEWER *houses...*



Key:  
Tree Protection Orders

## New plans are being drawn up to reduce the number of houses being proposed for Lea Meadow.

The developer is aiming to reduce the number of houses in his outline planning application by about 15 per cent, it has been announced.

Agent Stuart Lilly, acting on behalf of the developer Richard Scott, said in mid-September that major modifications were being made to the plans as a result of on-going negotiations with South Oxfordshire District Council (SODC).

Said Mr Lilly: "We are looking at a revised scheme of 80 to 86 units. We are in on-going negotiations with the district council and there are significant modifications that are being considered as a result with regard to the lay-out and landscaping of the site."

He went on: "We have also maintained what we believe to be an open dialogue with the parish council and we hope to address a future meeting of the planning committee to discuss any further concerns."

"We are still determined to take this matter forward and we still truly believe in the merits of the development. We believe it will contribute significantly to the growth of Sonning Common."

He described the parish council's decision to recommend the planning application be refused as "predictable".

Michael Moore, from SODC's planning department, confirmed that he had written to the developer to outline his concerns over the proposed development.

These related to the fact that the proposed development was outside the village boundary and could have an adverse

impact on trees, hedgerows and the village infrastructure.

He said: "I think the current application, based on existing planning guidelines, is either going to be refused or withdrawn. As of today, the development is contrary to the local development plan."

He added that the council was currently considering where to build new homes in the district over the next 15 years and concluded: "It is important that the district council has a calm, considered and transparent approach to the situation in Sonning Common." ■

## ABOVE:

■ A Googlemap showing the site for proposed development at Lea Meadow.





## Villagers voice fears over major plans for new houses

**A large turn-out of villagers took part in a lively debate about controversial plans to build new houses on Lea Meadow.**

Around 55 members of the public attended a special meeting of Sonning Common Parish Council's planning committee on 9 August to air their views on the outline planning application for the land south of the Herb Farm on Peppard Road.

Councillor Barrie Greenwood chaired the meeting and was joined by Jo Hunt (vice-chair), Chrissie Phillips-Tilbury, Jenny Poska and Douglas Kedge.

The parish council had received 10 representations from local residents prior to the meeting. Councillor Greenwood invited each to speak, and those that were present at the meeting did so, along with many other villagers.

The overwhelming, although not unanimous opinion of the public attendees, was that the proposed development – then for 105 houses – should be recommended for refusal for several reasons.

They took the view that the density and style of the proposed housing was not in keeping with the village; the village's water and sewage system was insufficient to cope with the increase; and there would be a significant increase in the amount of traffic on Peppard Road and subsequent impact on the village centre.

In addition, local amenities such as the primary schools and the health centre would find it difficult to meet the increased demand, they feared.

Following a lively public debate, the committee discussed the application. Councillor Douglas Kedge had researched the proposal in detail and gave an informed speech citing council planning rules for development which were apparently contravened by the Lea Meadows proposal. Other councillors also spoke and the matter was finally put to a vote.

Councillors voted by a majority of four votes to one to recommend to South Oxfordshire District Council (SODC) that outline planning permission be refused.

To date SODC has received 130 representations from neighbours about the proposal. ■

## The parish council's response

**In a letter to South Oxfordshire District Council, the parish council's planning committee recommends that the Lea Meadow proposal be refused because:**

- Sonning Common is not a site specifically identified for housing development
- the proposed development would extend the village's built-up area and encroach upon the surrounding countryside
- the development is too big, too dense and out of keeping with its surroundings
- current sewage provision could not cope
- the removal of some hedgerows and trees would be detrimental to the site
- existing residents may suffer from reduced water pressure
- more cars would exacerbate current parking problems and congestion in Wood Lane and Grove Road
- Sonning Common Primary School is already full and there is no spare classroom capacity
- waiting times could increase at the health centre

The planning committee also cites the recent findings of the Sonning Common Community Plan survey as grounds for refusal.

"Following a very high return rate to the questionnaire (over 75 per cent) the replies indicated that 80 per cent of respondents did not want housing development, if it had to happen, on one large site. A number of small developments was preferred. The overwhelming view of residents on this matter is clear." ■

**Jack 'N Gill**

## **Dry Carpet Cleaning**

We offer you a Safe and Reliable way to clean your carpets.

Suitable for all types of carpets and rugs.

*For a free quote call:*

Daytime:

**07900 907059**

Evening:

**01491 680569**

[www.jackngill.co.uk](http://www.jackngill.co.uk)



**01491 682412**

**07808 162985**



Established Before 1879

**TOMALIN  
AND SON**

**FUNERAL DIRECTORS**  
INDEPENDENT FAMILY RUN FUNERAL SERVICE

**ANDERSON HOUSE**

**38 READING ROAD • HENLEY-ON-THAMES**

**Telephone: 01491 573370**



Pre-paid Funeral Plans  
GOLDEN CHARTER

**E. T. Sheppard**

**MONUMENTAL  
MASON**  
SINCE 1940

Brochures on request or visit our Showroom at:

**36 Reading Road • Henley-On-Thames**

**Telephone: 01491 574644**

**YOUR NEW LOCAL  
MoT TEST STATION**  
EST 1998

**HENNELL VEHICLE  
SERVICES**



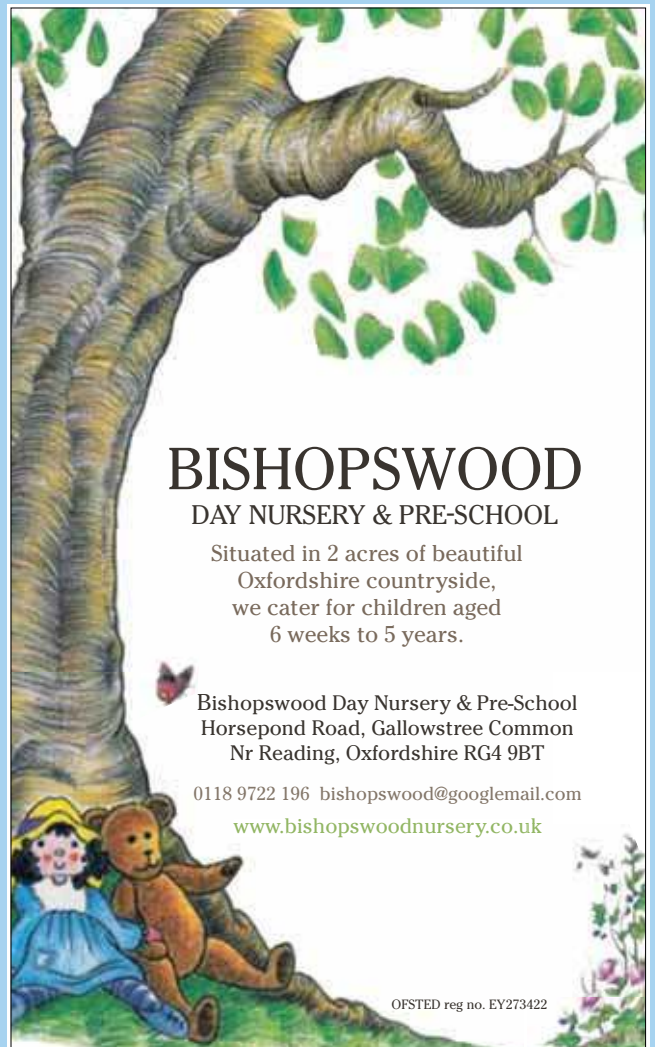
- MOT TESTING
- SERVICING & REPAIRS
- ENGINE DIAGNOSTICS
- VEHICLE AIR CONDITIONING
- LASER FOUR WHEEL ALIGNMENT

**BOOK YOUR MoT NOW**

**Tel: 01491 628866**

[www.hennellvehicleservices.co.uk](http://www.hennellvehicleservices.co.uk)

Unit 19 Greys Green Business Centre  
Rotherfield Greys, Henley-on-Thames  
Oxon RG9 4QG



**BISHOPSWOOD**  
DAY NURSERY & PRE-SCHOOL

Situated in 2 acres of beautiful  
Oxfordshire countryside,  
we cater for children aged  
6 weeks to 5 years.

Bishopswood Day Nursery & Pre-School  
Horsepond Road, Gallowstree Common  
Nr Reading, Oxfordshire RG4 9BT

0118 9722 196 [bishopswood@googlemail.com](mailto:bishopswood@googlemail.com)

[www.bishopswoodnursery.co.uk](http://www.bishopswoodnursery.co.uk)

OFSTED reg no. EY273422



# FUNCTIONAL *Physiotherapy*

*Since taking over the physiotherapy clinic at Sonning Common Health Centre a year ago, Jo Pereira's business has been steadily growing.*

A second physiotherapist, Catherine Matthews, joined Functional Physiotherapy in August to help cope with the growing demand for treatments for back, neck and joint pain, sprains and strains, headaches, sports' injuries and pre and post-operative care.

As well as physiotherapy, the pair offer Pilates courses at the health centre, which are beneficial to everyone for correcting posture, lengthening and strengthening muscles, relieving pain and improving balance and coordination. Acupuncture for pain relief is also available.

Functional Physiotherapy prides itself on offering a flexible, friendly and patient-focussed service, designed to meet people's individual needs. Jo and Catherine aim to be always professional, prompt and efficient in their approach.

Practice owner Jo has 16 years' experience as a Chartered Physiotherapist. She has worked in Bristol, Oxfordshire, London and New Zealand and now enjoys being based in Sonning Common where, she says, she has received a warm and friendly welcome from the health centre and the wider community.

One of the chief benefits of being based at the health centre, says Jo, is the close working relationship that the physiotherapists have with the

doctors and staff so that patients can benefit from their combined skills and experience.

Jo became a physiotherapist because of her long-standing interest in human movement and function. One of the most rewarding aspects of her job, she says, is seeing people affected by a severe trauma, such as a road accident, being restored to health.

"Watching people regain their independence and learn to manage their pain more effectively so that they can return to work and function normally again is hugely satisfying."

Another area of importance for Functional Physiotherapy is pre and post-operative care. A patient scheduled for a hip replacement, for example, may find that physiotherapy helps to improve their muscle strength in preparation for surgery while post-operative exercises can increase their joint range and reduce recovery time afterwards.

For expectant Mums, Jo and Catherine offer a range of Pilates-based exercises designed to strengthen core and pelvic floor muscles and relieve pelvic and lower back pain. Similar exercises after the baby has been born can help Mums get back to normal sooner.

Jo and Catherine are happy to advise people by telephone as to whether physiotherapy may help them. The first Functional Physiotherapy session lasts up to 45 minutes with subsequent treatments normally taking 30 minutes.

The practice is registered with all major health insurance companies. All bookings are taken via the surgery. ■



**ABOVE:**

■ Catherine Matthews, left, and Jo Pereira of Functional Physiotherapy.



**Sonning Common Health Centre  
Wood Lane  
Sonning Common  
RG4 9SW**

**Phone: 0118 972 2745**

**Email: [info@functionalphysio.co.uk](mailto:info@functionalphysio.co.uk)  
[www.functionalphysio.co.uk](http://www.functionalphysio.co.uk)**



## T'ai chi for Health

Kidmore End War Memorial Hall  
Reades Lane, Sonning Common

**Tuesday 9.30-10.30**  
During term time

Chen style Tai chi in a friendly informal class  
Improve your stamina, balance,  
strength & co-ordination

For further information  
please ring Debbie on 07802 347943  
[www.debbiepage.org](http://www.debbiepage.org)

## PEPPARD BUILDING SUPPLIES

Telephone: Kidmore End 0118 972 2028

## EVERYTHING FOR THE HANDYMAN & BUILDER

**Bishopsland Farm • Peppard Road  
Dunsden • RG4 9NR**

## SONNING COMMON VILLAGE HALL

Available for hire for Parties, Meetings, Events etc.  
Fully equipped kitchen – Public Address System  
– Disabled Toilet Facilities –  
Side room can be hired separately.  
Tables & Chairs available for hire.  
Commercial rates by negotiation.

**Please Contact:**  
**Penny Harvey – 0118 972 3779**  
[www.sonningcommonvillagehall.btik.com](http://www.sonningcommonvillagehall.btik.com)

## SPICK 'n' SPAN

### DOMESTIC CLEANING SERVICE

- Reliable, friendly & trustworthy.
- Weekly / Fortnightly cleans
- One-Off Cleans
- All equipment and supplies provided.

*Competitive Rates*

*Please call Louise for a free quotation.*

**Tel: 0791 429 5167**

## HELPLINE LANDSCAPE SERVICES

**Landscaping** - Design, Construction, Garden make over.  
**Groundwork** - Clearance, Footings, Drainage, Grading.  
**Timber work** - Gateways, Decking, Arches, Pergola, Gazebo.  
**Fencing** - Panel, Close Board, Wire mesh, Stock fence.  
**Gardening** - Mowing, Weeding, Pruning, Clearance.  
**Tree work** - Felling, Lopping, Pruning, Clearance.  
**Driveways** - Gravel, Paved, Brick, Concrete.  
**Ponds** - Water features, Ponds, Rills.  
**Patios** - Slab, Stone, Pavers, Brick.  
**Log's for sale** - Cut and split to size.

Based in Sonning Common  
**Tel / Fax: 0118 9721342**  
**Email: [chriscolbeck@btinternet.com](mailto:chriscolbeck@btinternet.com)**

*Autumn Leaf*

## Computer Frustrations?

**Friendly local help with PC problems,  
upgrades, wireless,  
broadband and networking.**

**Free advice, reasonable rates.**

**Call David on 07980 129364**

**or e-mail:**

**[help@computerfrustrations.co.uk](mailto:help@computerfrustrations.co.uk)**



**£10.00 OFF**

your next **MoT** on  
production of this voucher



As Reading's longest established Vauxhall dealer, we offer unrivalled levels of customer service and great value for money. In stock, we have the best selection of new and used Vauxhalls in the area and can guarantee we will not be beaten on price or choice.

**SERVICING  
LOCAL CARS  
FOR OVER  
50 YEARS**

**Sonning Common Vauxhall  
Sonning Common Garage Ltd**

**0118 972 2021**

**[www.sonningcommonvauxhall.com](http://www.sonningcommonvauxhall.com)**

## BONNER LOCKSMITHS

### INSURANCE APPROVED

**DOORS & WINDOW LOCKS SUPPLIED & FITTED,  
CHANGED OR UPGRADED (BS3621)**

**DOMESTIC & COMMERCIAL PREMISES  
DIGITAL LOCKS • BARS**

**FREE NO OBLIGATION QUOTE**

**ALL AREAS COVERED**

**01491 680216**



**CRESTWELL HOUSE**

**CALL OUT SERVICE**

**FULL MEMBER  
OF BRITISH  
LOCKSMITH  
INSTITUTE**

**Beech Lane, RG8 0PX • Woodcote Nr. Reading  
PROPRIETOR: S. J. BONNER**





## Well done!

**Well deserved congratulations are due to the students and teachers at Chiltern Edge School for their best ever GCSE results, with 77 per cent of pupils achieving five or more A\* to C grades.**

The parents and community of Sonning Common and its surrounding villages must be very proud that our local school can achieve the sort of results that stand up extremely well against the national achievement levels.

The ongoing feeling that examinations are becoming easier belies the fact that all students work much harder than in years gone by with the demands of ongoing coursework and frequent national testing throughout their school career. It is hardly surprising that they have become better at examinations than students in the past; they must be the most examined generation yet!

Chiltern Edge is a specialist language college, a status they will have gained through showing an expertise in the teaching of languages. It means that there is extra funding available for the school which benefits all of the students and provides them with the opportunity to learn a foreign language until they are 16.

In an increasingly global environment, with so many of us travelling and working abroad, languages are an important asset for any young person.

In 2005 a Government decision allowed languages to become an option at 14 when previously it had been compulsory to study a language until 16.

The outcome has been that numbers of students with a language qualification has dwindled. It is therefore an outstanding achievement that our local comprehensive school has 82 per cent of its 16-year-olds gaining a GCSE grade C and above in a modern foreign language.

Wow, how impressive is that!! ■

**DIANA PEARMAN**  
Kennylands Road

## Stolen... an elderly lady's precious plants

**Please be aware. We have someone in the locality stealing plants.**

A wall trough planted in memory of my husband was stolen on 16/17 July from outside my home. It had a double trailing fuchsia in the middle, two verbenas and four begonias.

Eleven months ago, on 12 August 2009, I also had an expensive plant in an earthenware pot stolen. Both incidents have been reported to Thames Valley Police.

I live in a bungalow for the elderly.

I think it is disgusting that there is someone in or around the village who could steal plants that have been sown and planted to bring a little bit of colour into our lives.

Everyone said that I always put a good show in front of my bungalow but I will not be doing any more planting.

If anyone has any information about these thefts, please contact the police. ■

**Name and address supplied**

## Calling all classic car, boat and engine owners in the village

Are you a classic car, boat or engine enthusiast, like me? Whether you are currently driving, restoring or both, do you fancy meeting up with other locals for an occasional, informal drink and a natter?

You never know, you might meet up with someone with tools, equipment or knowledge to help keep or get your cherished vehicle, or wreck on the road or river. ■

**ALAN GOSWELL**  
Lea Road  
0118 972 2989



## Help the Village Gardeners to plant bulbs

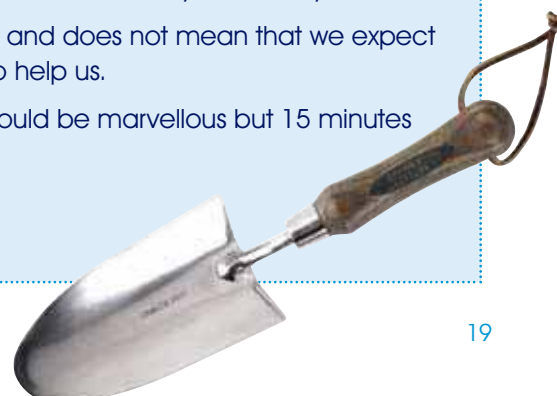
**The Village Gardeners have 3,000 bulbs to plant this autumn. Will you come and help us plant the bulbs on Sunday, 3 October?**

We are meeting at the health centre at 10am. Please come armed with a trowel or spade. Bring your children and your Granny.

This is a one-off request for help and does not mean that we expect you to turn out twice a month to help us.

If you can spare an hour that would be marvellous but 15 minutes would be appreciated. ■

**CHRISSIE PHILLIPS-TILBURY**  
Woodlands Road





High quality education and child care under the Early years foundation stage (EYFS) for children 4 months to 5 years

- *Good OFSTED report*
- *Pre-school sessions available*
- *Open all year, Monday to Friday, 7am to 7pm*
- *Flexible hours*
- *Early years education grants available*
- *Curriculum includes French, Music & Movement and Thames Valley Gym*
- *Small friendly and personal care in Sonning Common*

For further information, please ask for the manager on 0118 972 4783, or visit our website.

[www.alphabetdaynurseries.com](http://www.alphabetdaynurseries.com)

emails: [info@alphabetdaynurseries.com](mailto:info@alphabetdaynurseries.com)

# TradeMark<sup>TM</sup>

WINDOWS ♦ DOORS ♦ CONSERVATORIES  
FASCIA ♦ SOFFITS ♦ GUTTERING ♦ CLADDING

Use your Local Installer with 25 years experience

For a FREE quotation  
Call Mike Dockree on  
07785928190 or 0118 972 4376

All window and door installations carry a 10 year guarantee and the finished product is independently inspected with all certificates



WINDOWS ♦ DOORS ♦ CONSERVATORIES  
FASCIA ♦ SOFFITS ♦ GUTTERING ♦ CLADDING

# Garden Contracts

Time to improve your front or back garden?  
Rely on our experience to deliver stunning results and a service to match

0118 9469121

*Turf, Decking, Pergolas, Log Stores  
Walls, Fences, Patios, Bin Stores, Drives and Paths*

Unit 1 Southview Park, Caversham, Reading, Berks, RG4 5AF

Email: [Sales@gardencontracts.co.uk](mailto:Sales@gardencontracts.co.uk)

For fencing on-line visit [www.fencestore.co.uk](http://www.fencestore.co.uk)

For garden buildings on-line visit [www.shedstore.co.uk](http://www.shedstore.co.uk)

## CAVERSHAM AERIAL SERVICES

0118 967 3596

Digital TV aerials, Sky, Sky HD, Freesat and freeview  
DAB & FM aerials

14 Odiham Avenue RG4 6PU

[Cavershamaerials@gmail.com](mailto:Cavershamaerials@gmail.com)

[www.caversham-aerials.co.uk](http://www.caversham-aerials.co.uk)

## TEXTUREPLUS

**Free Estimates**

Interior & Exterior Decorating  
Plastering, Artexing, & Coving  
Solving Artex problems / Floor & wall Tiling  
Kitchens, Bathrooms, and P Certified Electrician  
**COMPLETE HOME IMPROVEMENTS**

CBT Registered / 30 Years Experience / NHBC Awarded  
Adrian Brown

Tel: 0118 9721442 / Sonning Common / Mobile: 07880 542363

Email: [textureplus.adrian@btopenworld.com](mailto:textureplus.adrian@btopenworld.com)

Website: [www.textureplus.co.uk](http://www.textureplus.co.uk)



# HEATH & WATKINS

**HARDWARE, PAINT, TOOLS, GARDEN ACCESSORIES, BEDDING PLANTS  
AND SHRUBS, PRE-PACKED COAL THROUGHOUT THE YEAR**

**MAIN AGENTS FOR SUTTONS SEEDS.  
SHEARS HOLLOW-GROUND & SHARPENED.  
ALL TYPES OF KEYS CUT.**

**CYCLE SPARES & REPAIRS & EVERYTHING ELECTRICAL**

**41A WOOD LANE, SONNING COMMON  
☎ KIDMORE END 0118 972 2107**

## Mr FixiT

### Repairs & Maintenance for almost anything!

All building maintenance and repairs, interior / exterior.  
Decorating, Floor / Wall Tiling, Plumbing, Electrical,  
Woodwork, Glazing.

Specialist Paint Effects and sympathetic restoration  
for older properties.

Kitchens, Bathrooms and Conservatories refurbished.

Landscaping, Patios, Water Features, Fencing,  
Hedge and Tree Cutting.

Sheds and outbuildings repairs and maintenance

No Call-Out Fee and Free Estimates

**07752 759908**

## Red Kite Electrical



**Domestic Electrical & Solar Power**

Find out more at: [www.redkiteelectrical.co.uk](http://www.redkiteelectrical.co.uk)

Call a locally based electrician.  
No job too small. Free estimates.

Phone: 0118 907 6342

Mob: 0788 2737402

Email: [sparks@redkiteelectrical.co.uk](mailto:sparks@redkiteelectrical.co.uk)  
17 Burnham Rise, Emmer Green

City & Guilds qualified  
NAPIT Part P approved



## Time 4 Pilates



**Want to look and feel great!!  
Try Pilates – controlled, yet gentle exercise**

Classes in Sonning Common area  
Including Ante and Post Natal

Mondays / Tuesdays / Thursdays  
Beginners and Intermediates  
Max 12 in Group (6 in Pregnancy classes)  
Private sessions also available

**Christine Brook** – Member of Body Control Pilates® Association  
Ring 07789 717017 or email [chris@time4pilates.co.uk](mailto:chris@time4pilates.co.uk)  
Website at [www.time4pilates.co.uk](http://www.time4pilates.co.uk)

**CURTAINS,  
BLINDS, PELMETS,  
TIE BACKS ETC.**

**ALL AT COMPETITIVE  
PRICES**

**CALL CAROLINE ON  
0118 954 2448**

**OR**

**0781 561 0007**

# AUSTIN HARRIS

V.H.S.

**T.V. & VIDEO  
RENTAL**

**RADIO & T.V.  
SALES / SERVICES**

**REPAIRS TO  
DOMESTIC APPLIANCES**

**KIDMORE END 0118 972 3098**



# Tom Fort

## BEASTS

*Wildlife. You can't be against it, can you? And I'm as keen as anyone else on the shimmer of butterflies in the garden, the hum of questing bees, the snuffle of the hedgehog in the undergrowth, the chirrup and chatter of sparrows and finches. But there are limits.*

Take pigeons. We have a fine cherry tree which, come May, is thick with swelling fruit. But we never get any because the pigeons come first. Aerial battalions of them descend

and tear the tree to bits, plastering the ground beneath with the digested waste of my cherries. My cherries. But the birds don't care. They just fly off, a few feathers drifting in the air, and wait until my back is turned.

I used to grow purple-sprouting broccoli. Not any more. I still haven't recovered from the sight of five pigeons collaborating to weigh down the netting until they were close enough the stick their horrible heads through the mesh and scoff my favourite veg.

Worst of all are the muntjac that infest the territory between Wood Lane and Grove Road.

I have put up three different fences to try and keep them out, but they still get in, Lord knows how. And once in! This summer we came back from holiday to find the hearts of all the lettuces gone, the courgette plants devastated, the leaves stripped from the climbing beans, the tops munched off the carrots, and little hoof marks everywhere.

I'm now considering further measures against these odious freeloaders. I'm ruling nothing out, including explosives. If you will excuse the expression, I will not be made a monkey of by a muntjac. ■

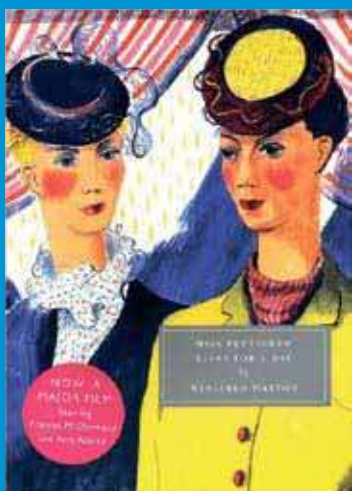


Writer and journalist Tom Fort, of Wood Lane, has lived in the village for 13 years. During his 10-year career as a full-time writer he has produced books on subjects including the Englishman's obsession with his lawn and the English person's habit of talking about the weather. He also writes book reviews for the Sunday Telegraph and Literary Review. In Tom's spare time, heaven is standing in a river fishing.

## BOOK REVIEW

### MISS PETTIGREW LIVES FOR A DAY

by Winifred Watson



**MISS PETTIGREW is a middle-aged governess sent by her agency to work for a nightclub singer rather than a household full of unruly children. The book tells the story of 24 hours in her life that changed her forever.**

This is definitely a woman's book and was an entertaining and light-hearted read with a happy ending and written with wit and a certain style.

The contrast between glamorous froth and the hard working and depressed spinster gave it a fairy tale appeal and I always wanted Miss Pettigrew to make the most of her experiences.

The characters were easy to engage with. I found them to be almost caricatures and rather superficial, particularly the men. But it did show the position of women in 1930's society as deeply dependent on men and the conventions of etiquette.

The references to make-up, negligees, furs and fashion will always appeal to women and I loved the original line drawings.

Some of the repartee is very funny and I thought Miss Pettigrew's ordeal by society was a good foil, showing the dubious morals and drug dependence of a very rich and largely bored section of society. It made some interesting social comments.

The universal appeal of a frumpy spinster emerging as a swan and having a dream fulfilled was appealing and I liked the spirit shown by Miss Pettigrew and her drink-fuelled ways of dealing with her situations.

The lack of genuine affection in her life was very sad and her fear of yet more children to govern was very humorous, but for me the book lacked real depth and the references to ethnic minorities made some of the language rather dated.

On the whole, though, it was fun and a change. I felt it would be comforting when I wanted some indulgence. ■

**JOAN GRUMMANT**

*This review was contributed by a village book group which meets once a month to select a book to read and review.*





## Andrew Page Oak

for everything oak

Oak framed garages and outbuildings to enhance your property. Garden rooms, oak furniture and joinery, all made to your exact requirements.

Oak timber for builders and DIY



info@andrewpageoak.co.uk 01491 828207  
www.andrewpageoak.co.uk

## WOOD LANE DENTISTRY

DENTAL SURGEONS

Richard G. McQuillan B.D.S.(U.LONDON)  
Vik Chugani B.D.S., M.F.D.S.R.C.S. (ED)

DENTAL SURGERY

WOOD LANE  
SONNING COMMON  
READING BERKSHIRE RG4 9SJ

TELEPHONE  
KIDMORE END  
0118 972 2626

## John Abbey Painter & Decorator



0118 924 2552

58 Wood Lane  
Sonning Common



## ROOFING

## SERVICES

### A GORDON

Specialist in Slating,  
Tiling and Flat Roofs  
All work guaranteed



Advanced Level  
City & Guilds



Telephone:  
01491 576 463

## FOR A BEAUTIFUL GARDEN

Choose from our wide range of quality garden services:  
design and landscaping, plants and maintenance.  
We tailor-make our service for you.

For a free, no-obligation visit and written estimate from  
RHS qualified staff,  
call 01844 279430 or

e-mail: info@brannfordgardens.co.uk

Full details at: www.brannfordgardens.co.uk



## CHIROPODY HOME VISITS

For professional treatment & advice  
contact

STATE REGISTERED CHIROPODIST  
Heidi Snookes-Owen

Bsc, DpodM, SRCh, MChS  
HPC Registered

0118 924 2677

## CERAMIC WALL & FLOOR TILING

Adhesive / Grout / Trims Supplied  
Floor Levelling & Plastering  
Free Estimates & Advice

Call Mick 0118 962 8057 / Mobile 07841 586003

## A. SIMMONITE

INTERIOR & EXTERIOR • PAINTERS & DECORATORS  
GUTTER CLEANING or REPLACEMENT SERVICE  
GENERAL PROPERTY MAINTENANCE  
FREE ESTIMATES  
FAST • EFFICIENT & PROFESSIONAL SERVICE  
PRIVATE & COMMERCIAL WORK UNDERTAKEN

Tel: 0118 972 2667

## KIDMORE END PRE-SCHOOL



A child's first steps into education within a caring environment

We are a small, friendly pre-school caring for children from 2 years 6 months to 5 years in a beautiful village setting. Various sessions available.

We are OFSTED inspected and registered for Early Years Funding.

For more information, please call Louise on 0118 924 2740

Registered Charity number 104-6030  
The Parish Rooms, Wood Lane, Kidmore End, Reading, RG4 9BB.



# CARPET FITTER

**Fitted Carpets & Vinyl Specialist**  
**Underlays & Fixings Supplied**  
**Re-Adaptions & Restretches**  
**Measuring, Estimating & Planning**  
**Carpets ★ Vinyl ★ Amtico ★ Kamdean**  
**25 YEARS EXPERIENCE**

**MICHAEL HODGSON**

TEL: 0118 962 8057 / MOB: 07841 586003

## THAMES VALLEY GYMNASTICS CLUB

Bird Wood Court  
 Peppard Road  
 Sonning Common

(Registered Charity No. 1062939)



- ◆ Modern Gymnastics facility with "state of the art" equipment and dance studio
- ◆ Elite/Competitive squad coaching to Regional/National levels
- ◆ General Gymnastics classes for Boys/Girls – all ages/abilities
- ◆ Pre-School programmes
- ◆ Ballet Classes
- ◆ Play Gym for the Under 5s (Tuesday & Thursday a.m.)
- ◆ Gym Birthday Parties
- ◆ Room for hire

*For further information, please call in or telephone  
 Kevin Cassidy, Club Manager, on 0118 972 4401*



**Dean & Milward**  
 insurance brokers & financial advisers  
 3 Market Place Mews Henley-on-Thames  
 Tel: 01491 578259 Fax: 01491 410597

## Motor Insurance

It really is worthwhile asking us for a quote

Instant  
COVER



Professional  
SERVICE



Save  
MONEY

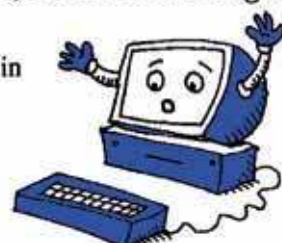


## Computer Problems?

*Free quote, no fix no fee, no call out charge*

Over 200 happy customers in  
 Sonning Common.

Milo and Michael Harper



**Milo Technical Support**  
 22 Sedgewell Road

0118 972 4905

## bespoke kitchens

*We have moved to our new  
 larger improved showroom at:*

Wyevale Hare Hatch  
 Garden Centre  
 Bath Road  
 Hare Hatch  
 Twyford  
 Berkshire RG10 9SW

Telephone: 0118 940 6600

Fax: 0118 940 6622

Email:  
[henley@optiplankitchens.co.uk](mailto:henley@optiplankitchens.co.uk)

Website:  
[www.optiplankitchens.co.uk](http://www.optiplankitchens.co.uk)

### OPENING HOURS

Monday – Saturday  
 9:00am – 5:00pm

*Sundays & Bank Holidays  
 by appointment only*

- 13 Full displays contemporary and traditional
- Displays featuring Granite, Caesarstone, Solid Wood and Laminate Worktops
- De Dietrich Appliance centre
- Bosch Appliance centre

## OPTIPLAN

The South's Premier Kitchen Manufacturer



- Manufacturer and Retailer – **No Middle Men!**
- Bring in your own Measurements for an on-the-spot Quote
- Project Managed Installation Service
- **20 Year** Guarantee on Furniture

- Quality Kitchens from £3,000 to £30,000
- Kitchens Handmade to **Any** Size or Colour
- Granite and Corian Worktop Specialists
- Factory Visits Welcome

*Over 17,000 satisfied customers in this area*

established 1984





**TOP ROW FROM L-R:**

Carole Lewis  
Audrey Williamson  
Maureen Downes  
Anne Symons

**BOTTOM ROW FROM L-R:**

Kenneth Hopcroft  
Cliff Pryke  
Sheila Hayward

# Nottakwire

## THE VILLAGE SINGING GROUP

### Carole Lewis

At the age of 11 I wanted to join the school choir and had to sing the National Anthem for the audition. I didn't get in. Although I love all types of music, I always knew that I 'couldn't sing'. That was before Nottakwire - it seems everybody can sing! I am an enthusiastic member and just love our Friday sessions. It is truly uplifting to be able to sing with this lovely group of people.

### Audrey Williamson

Singing with Nottakwire has brought me back into the sunshine of life, helping me cope with my husband's long and distressing illness.

### Maureen Downes

I was very sad after the death of my husband and thought that one thing that would help me through this difficult time would be to join a singing group. I thought that I was too old and out of practice for anyone to want me to sing with them. However, in a magical moment, amazingly, Nottakwire was starting up and you welcomed me in! Group members have been very friendly and welcoming and they have introduced me to a walking group in Sonning Common and to the University of the Third Age in Reading. Thank you for being there for me.

### Anne Symons

Having always enjoyed music but also having been told all my life that I could not sing, I was a bit dubious about joining Nottakwire, but thought I would give it a go. I am so glad I took the plunge because, as well as (maybe) learning to hold a note a bit better, it is such fun and so enjoyable. A big plus is getting to know properly people I have seen in the village for years, but did not know.

### Kenneth Hopcroft

Like a lost soul I wandered into the village hall one day feeling very low, having quite recently lost my wife. I was attracted by the sound of Margaret playing the piano. Margaret was saying how she would like to form a singing group. I put my name forward and that's how I became involved with Nottakwire. I've enjoyed the fun, social warmth and friendship.

### Cliff Pryke

After many years of singing, I gave it a permanent rest. Then along comes Nottakwire to revive my enthusiasm again. What a super crowd to be with, and so much wonderful music to be had. Thank you Margaret and Elaine for your efforts.

### Sheila Hayward

Nottakwire is absolutely brilliant. Morning lessons, male or female, all age groups, young or retired. I've met loads of new friends. Three cheers for Elaine and Margaret. They have (I think) taught me to sing.

Nottakwire is holding a special concert to celebrate its launch on Saturday 23 October at 3pm in the village hall.

Entry is free but by ticket only. Tickets are available from the FISH office in the village hall every weekday morning or from Margaret and Elaine on 0118 972 1248.

New members are welcome to join us from 5 November to swell our numbers in preparation for a Christmas event planned for Saturday 18 December at 3pm.

**Margaret Moola and Elaine Williams – Nottakwire leaders**



# Abbeycrest Nursing Home

*Essex Way, Kennylands Road*

*Sonning Common Reading RG4 9RG Telephone: Reading 0118 972 4414*

Full Medical *NURSING CARE* – 24 Hours a day *QUALIFIED* and *VERY CARING* Staff.

Long Term and Holiday Stays – Subject to Availability.

A superbly equipped, centrally heated home with Nurse Call, colour T.V.s etc. in all bedrooms, lounges, etc.

Abbeycrest has 14 single and double bedrooms to give a maximum of 24 beds.

When you really care about the tender loving care your loved ones deserve please contact:

**MATRON TELEPHONE: 0118 972 4414 or call in and visit us.**

**Please make enquiries re. Staff Vacancies to: the Matron on Reading 0118 972 4414**



# How 'English' was Edward Elgar?

**Elgar was at the forefront of an English musical renaissance at the end of the 19th century. An unquestionably major composer, whose musical invention and character were allied to a breadth of vision and insight not seen in an English composer since Purcell, Elgar was a man of contradictions and mysteries, as shown in perhaps his best-known work, the Enigma Variations.**

As the conductor Sir Andrew Davis points out, the Enigma Variations came from nowhere; there was no precursor in English music, no hint of what was to come. A fantastic masterpiece representing a turning-point in English music, Enigma Variations is one of the miracles of musical history.

For most music lovers, Elgar was unquestionably English. As Davis said: 'When I think of English music, I think of Elgar'. For Davis, Elgar sums up our national psyche: our love of ceremony, a profound attachment to the English countryside, a wry

sense of humour and a pride in our national achievements.

So was Elgar the quintessential English composer? Well, up to a point. He was untouched by two of the major influences on that other great English composer, Ralph Vaughan Williams. The first of these was folk music, which was gradually becoming recognised as a valid form of music-making. Nor was Elgar the slightest bit interested in the glorious music of the composers of the 16th century English Renaissance: Tallis, Byrd, Tavener and so on.

Elgar drew much of his inspiration from European composers, especially Robert Schumann. Indeed, Elgar's music was championed by German conductors such as Hans Richter and by the composer Richard Strauss, who referred to Elgar as 'the first English progressivist'.

So how do we sum up this man who was English to the core, both in his music and in

his personality, but who was also part of the great European tradition of music making?

The Land of Hope and Glory was Elgar's public face but it hid an elusive and deeply complex personality. Elgar was deeply insecure and often suicidal. His music, often wistful and nostalgic, reflected the loneliness of the creative artist. Despite the honours heaped upon him, Elgar always felt himself an outsider, conscious of being in some way apart from those around him.



*The local branch of the Workers' Educational Association (WEA) will be presenting a study day on the life and times of Sir Edward Elgar on Saturday 6 November 2010. This day school will be given by the well-known local musician and lecturer Gwyn Parry-Jones and will cost £36. Further details are available from the WEA Reading, 27 Derby Road, Caversham, RG4 5HE. Phone: 0118 946 4137. Email: WEAREading@googlemail.com*

**GRAHAM THOMAS**

**John Taylor (Ewelme) Limited**

- ◆ BOILER & RANGE COOKER SERVICE ENGINEERS ◆
- ◆ GENERAL PLUMBING ◆
- ◆ OIL TANK REPLACEMENT ◆
- ◆ INSTALLATION OF COMPLETE CENTRAL HEATING SYSTEMS ◆
- ◆ OUTSIDE GROUND WORKS ◆ DRAINAGE ◆
- ◆ ELECTRICAL INSTALLATION SERVICES ◆

Office: 01491 833538  
Mobile: 07968 897983

**Easton**   
**PROPERTYCARE** 

- Fully qualified (Part P reg) electrician
- Plumbing • Kitchens and bathrooms
- Landscaping and fencing

**0118 947 7738**  
07717 295679  
[www.eastonpropertycare.co.uk](http://www.eastonpropertycare.co.uk)

**SHARP BUILDING SERVICES**

The local builder for all your building work:

**EXTENSIONS  
ALTERATIONS  
REPAIRS  
TILING**

Phone Steve on:  
**07887 986446 / 01189 724880**

**Sonning Common Pet Care**  
At Home Pet Care  
when you are on holiday or at work

**Cats**  
Daily visits to clean, feed and pamper

**Small Pets**  
Home visits to care for your Rabbits, Guinea Pigs, Hamsters, etc

**Dog Walking**  
Regular or occasional walks

**Puppy Visits**  
To feed, play, toilet break and clean up

Please call Alison for further information  
Tel 0118 9722948 / 07787 114536





Oct

<b>FRIDAY</b> <b>1</b> <b>Nottakwire section practices</b> Village Hall 9am	<b>FRIDAY</b> <b>1</b> <b>British Legion tea dance</b> Village Hall 2 - 4pm	<b>MONDAY</b> <b>4</b> <b>FISH – Garden centre visit</b> 1.30pm	<b>FRIDAY</b> <b>8</b> <b>Nottakwire – Full practice</b> Village Hall 9.45am
<b>WEDNESDAY</b> <b>13</b> <b>Chiltern Edge Horticultural Society – Growing and Showing Vegetables,</b> Chiltern Edge School theatre 7.30pm	<b>FRIDAY</b> <b>15</b> <b>Nottakwire section practices</b> Village Hall 9am	<b>MONDAY</b> <b>18</b> <b>Sonning Common Parish Council</b> Village Hall 8pm	<b>THURSDAY</b> <b>21</b> <b>FISH – Pub lunch</b> 11.30am
<b>THURSDAY</b> <b>21</b> <b>Sonning Common Women's Institute – Local Crime Community Sentencing</b> Village Hall 7.30pm	<b>FRIDAY</b> <b>22</b> <b>Nottakwire – Full practice &amp; dress rehearsal</b> Village Hall 10.15am & 2.30pm	<b>SATURDAY</b> <b>23</b> <b>Nottakwire – Debut concert</b> Free entry by ticket only Village Hall 2.45pm	<b>FRIDAY</b> <b>29</b> <b>British Legion tea dance</b> Village Hall 2 - 4pm
<b>MONDAY</b> <b>1</b> <b>FISH – Garden centre visit</b> 1.30pm	<b>FRIDAY</b> <b>5</b> <b>Nottakwire – Full practice</b> Village Hall 9.45am	<b>WEDNESDAY</b> <b>10</b> <b>Chiltern Edge Horticultural Society – William Robinson, the Wild Gardener, by Richard Bisgrove, Chiltern Edge school theatre</b> 7.30pm	<b>THURSDAY</b> <b>11</b> <b>Sonning Common Society – You Must Remember This, by Julie Roberts, Sonning Common Library</b> 7.30pm
<b>SATURDAY</b> <b>13</b> <b>Feel Good Fair, by Sonning Common Health Centre</b> Village Hall 10am - 4pm	<b>MONDAY</b> <b>15</b> <b>Sonning Common Parish Council</b> Village Hall 8pm	<b>THURSDAY</b> <b>18</b> <b>FISH – Pub lunch</b> 11.30am	<b>THURSDAY</b> <b>18</b> <b>Sonning Common Women's Institute – A Woman of Wax - the Life of Madam Tussauds, by Tony Weston, Village Hall</b> 7.30pm
<b>FRIDAY</b> <b>19</b> <b>Nottakwire – Full practice</b> Village Hall 9.45am	<b>SATURDAY</b> <b>20</b> <b>Sonning Common Women's Institute Autumn Fair, Village hall</b> 10am - 12.30pm	<b>FRIDAY</b> <b>26</b> <b>British Legion tea dance</b> Village Hall 2 - 4pm	

Nov

**FISH** runs regular shopping trips to Tesco in Henley and Henley and Reading town centres.  
For more information and to book call 0118 972 3986. ■





## Orchard Lodge RESIDENTIAL CARE

36 Baskerville Road  
Sonning Common

**0118 972 2582**

*We specialise in caring for  
Alzheimer/dementia residents.*  
Day care facilities are also available.

Fed Up With Call Centres

## Barrs Insurance

**Mark & Helen Richards**  
*Your Local Insurance Brokers  
For The Unusual & The Usual  
Let Us Take Care Of Your Insurance*

- House & Contents • Business • Liabilities
- Travel • Landlords • Professional Indemnity
- Horse • Shops • Sickness / Accident
- Commercial / Unusual Vehicle

If It's Not listed We Still Can Help  
All Types Of Insurance Enquiries Welcome

**0118 924 2603**

mail: [info@barrs-insurances.co.uk](mailto:info@barrs-insurances.co.uk)

[www.barrs-insurance.co.uk](http://www.barrs-insurance.co.uk)

Unit 2, Kidby's Yard, Kennylands Road, Sonning Common RG4 9JT

## HENLEY GLAZING AND WINDOW CENTRE LIMITED

Incorporating



**01491 629901**

Glass Supply, Glazing Service,  
Mirrors, Shelves, Tabletops,  
Sealed Units, Lead Lights,  
Locks, Secondary Glazing,  
Shower Screens



**FENSA**  
Registered Company



**0118 9419210**

Suppliers and Installers of:

UPVC, Aluminium and  
Timber Windows  
Doors and Conservatories  
Fascias, Soffits and Guttering

Workshop: Unit 12, Manor Farm, Peppard Common, Henley-on-Thames RG9 5LA  
Fax: 01491 629904 Email: [henleyglazingwindow@yahoo.co.uk](mailto:henleyglazingwindow@yahoo.co.uk)

# TANDOORI

## Connoisseur

*Come & Experience authentic  
Tandoori & Bengali Cuisine*

21 Wood Lane  
Sonning Common  
**0118 972 3104 / 972 1054**

- ★ Fully Air-Conditioned
- ★ Large Groups Catered For
- ★ Open 7 Days a Week

**TAKE-AWAY MENU**

**We Guarantee Prompt Service on All Orders**

## S J HINTON Carpenter & Joiner

All carpentry work undertaken  
MDF built-in furniture a speciality  
Quality craftsmanship

Telephone Steve on: **0118 972 3602**  
Mobile: **07887 653866**

## Sonning Common Beauty

12 Newfield Road **0118 972 3059**

[www.sonningcommonbeauty.co.uk](http://www.sonningcommonbeauty.co.uk)

- Manicure • Pedicure • Organic Facials
- MD Formulations Glycolic peels
- Waxing • Lash and Brow treatments
- Spray tanning • Make-up
- Massage Bridal
- Holiday and mum to be packages available

Gift vouchers available

Some reduced price treatments available  
each week please ring to check availability



## EDS School of Motoring

0118 972 3349 / 0794 057 9018

edsschoolofmotoring@yahoo.co.uk



Creating  
good safe  
drivers  
for life



**noble intentions**  
landscape garden design

Professional  
advice, design &  
planting for your  
garden.

Call Gail Noble  
on 0118 972 3214  
[www.noble-intentions.com](http://www.noble-intentions.com)



# Brambles



Weddings

Funerals

Hand-Tied Gift Bouquets



National & International Deliveries

Fully Qualified Florist

Free Local Delivery

42 Wood Lane • Sonning Common • RG4 9SL  
0118 972 1240 0777 179 0916

*We turn feelings into flowers*



## PRESSED for TIME



### LAUNDERERS & DRY CLEANERS

Professional Shirt Service - Ironing - Service Washing - Dry Cleaning  
Leather & Suede Cleaning & Repairs - Full Tailoring, Repairs & Alteration Service  
Suede, Leather & Wax Jackets - Wedding Dress Cleaning & Alterations

Opening Hours  
Mon - Fri  
9am - 5pm  
Sat  
9am - 1pm

Collection & Delivery Service  
Tel: 0118 9723355

43 wood lane - Sonning Common - Reading - Berkshire - RG4 9SJ

Formerly  
Mums Ironing  
&  
Under New  
Management

## Footcare



Routine nail care  
Nail & skin infection control  
Corn & hard skin treatment  
Chapped, flaky heels  
Nail deformities  
Bunion care  
Athletes foot/veruccas/warts  
Burning/itchy feet

Appointments last 30 minutes  
Qualified Therapist - Fully Insured

0118 9723266 / 07979 811318