



# ST MARY'S marylebone



020 7258 5047  
VENUE@STMARYSLONDON.COM  
WWW.STMARYSVENUE.COM  
WYNDHAM PLACE, W1H 1PQ








# ST MARY'S LONDON

St Mary's is the perfect venue for your central London event. Book with us and enjoy a stunning Grade 1 listed building with versatile spaces, exceptional Zone 1 location, and modern facilities.

Our 780m<sup>2</sup> venue features a prestigious Great Hall with excellent tech amenities, including super-fast wifi, colour-controllable lighting, a large projector, and an incredible sound system. The Undercroft offers a second spacious area with meeting rooms and a full-size catering kitchen. Accommodating up to 700 guests,

St Mary's is fully accessible and available for full-day or evening hire, Monday - Saturday between 8am and midnight, with events ending at 10.30pm.

We live and breathe events week in and week out at St. Mary's, so drop us an email at [venue@stmaryslondon.com](mailto:venue@stmaryslondon.com) and see how we can help with your next event!



*"We held a fantastic corporate event at St Marys Marylebone in Nov 2023. The venue were very professional to work with in advance and onsite. It's cost effective, supportive staff and their recommendations of caterers worked well too (we used Little Piggy and would 100% recommend!). We will definitely be back for another event. Cracking venue!"*

GCVA





*"As an event organiser I have worked all over the world and this is now one of my favourite venues. I think it is perfect for all kinds of events and the acoustics for live music are amazing. The team are a dream to work with and very helpful and accommodating. I would highly recommend St Mary's as one of the best hidden gems in London."*

Merlin Events



# WHY CHOOSE ST MARY'S FOR YOUR EVENT?



## Friendly & Expert Team

St Mary's consistently receives 5-star reviews for excellent service. The friendly, knowledgeable team know the venue inside out and are on hand to make your event a success.



## Beautiful Iconic Architecture

Designed by Robert Smirke, best known for designing the British Museum, the grand portico entrance on the piazza and beautifully restored Georgian interior provide a grand setting.



## Excellent Transport Links

St Mary's is close to six different tube lines and four stations. It is a short bus or taxi ride from Kings Cross, Euston & Paddington. Close to the A40 with nearby street parking and carpark options.



## Large Capacity

St Mary's can host:

- Theatre - 700
- Balconies - 200  
*(part of 700 max cap)*
- Standing - 600
- Cabaret - 330
- Banquet - 333
- Classroom - 250
- Exam - 150



## Outstanding AVL System

An excellent £250k+ in-house system covers sound, lighting and visuals. Most events find everything they need is already on site, and the system is expandable for larger events.



## Registered Charity

When you book with St Mary's you are enabling charitable work.

This includes a social supermarket, homeless meals and other work in the local community.



## Accessible Venue

There is step-free access throughout the venue, with the exception of the balconies.

Alongside the lift, there is also a hearing loop.



## Commercial Kitchen Onsite

There is a spacious, well equipped, commercial kitchen onsite which can cater for up to 300 guests.



*"The venue was beautiful and the staff team could not have been more helpful from the initial enquiry right through to the running of the day. They made it all so easy for us. We used one of the venues recommended caterers, Gurkin, who made us beautifully presented and really tasty food to treat our guests with. We will definitely be returning for our next conference."*

Baby Basics



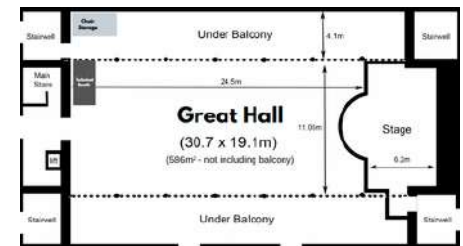
Step into the timeless elegance of the Great Hall at St Mary's. Built in 1824, this versatile 586-square-meter space has been beautifully restored to its original Georgian splendour. Adorned with gorgeous stained glass windows, high ceilings, and natural oak flooring, the Great Hall offers a bright and spacious ambiance that is sure to captivate your guests, setting the stage for your next unforgettable event.

St Mary's offers in-house technicians to operate the professional-grade sound system, large projector, and fully customisable LED lighting system. This allows us to effortlessly create the perfect ambiance for your event, accommodating everything from live bands and DJs to keynote speakers.

# THE GREAT HALL

Standing 600  
Theatre 700  
Classroom 250

Cabaret 330  
Banquet 335  
Exam 150



Experience the flexibility to customise the layout for concerts, conferences, performances, fashion shows, product launches, and more. St Mary's Great Hall is the perfect canvas for your unique vision, providing an unparalleled backdrop for a wide range of events.

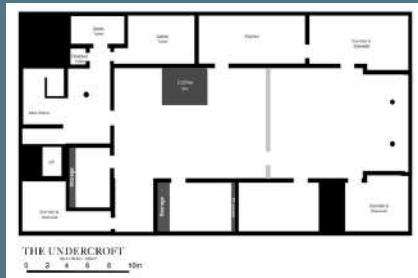






Enjoy additional versatility with the Undercroft—an expansive space included with the Great Hall. Perfect for food courts, conferences, exhibitions, and receptions, it features

a built-in sound system for background music or conference keynote speakers. Transform this blank canvas with coloured lights, varied furniture layouts, and unique props, utilising the a modern industrial ambiance with exposed fittings and wood paneling for a trendy feel.



The flexibility of a movable soundproof wall allows for the creation of two large, distinct rooms. Three lockable meeting rooms serve as green rooms or breakout spaces. They all have the capability to have a live feed of the Great Hall – handy for cueing fashion shows or team rooms. An industrial kitchen is also available to cater to up to 300 guests.



*"The staff and venue was absolutely amazing. We hired the venue for our charity walk start and finish location and it was perfect. We had around 900 people in total walking for us that day and it was a real success. Pre event the staff were super helpful and knowledgeable and made us feel really confident about the event as did the on the day team. Thank you so much for helping us deliver a fabulous and memorable day for our community."*

The Brain Tumour Charity

# THE UNDERCROFT

Standing 400  
Theatre 360  
Classroom 250

Cabaret 280  
Banquet 224  
Exam 150

# RATE CARD

	2024	2025
Daytime 8am - midnight	£8000	£8250
Evening 4pm - midnight	£5700	£5900
Registered Charity	£6000	£6200

## Additional Services

Sound Engineer- £320 Day Rate (8 hours then 40ph)  
Lighting/ Visuals/Livestream Engineer - £320 Day Rate  
Event Staff - £25 per hour, per person  
Full stage clearance (inc. drum riser) - £250  
Partial stage clearance - £120

Pre-8 am Access - £500 per hour  
Carpet Removal (in-front of the stage) - £350  
Non-preferred caterers' surcharge - £350  
Balcony window blackouts - £80  
Under balcony window blackouts - £40  
Festoon hire, setup and removal - £490



**The excellent recommended caterers are:**

**Gurkin Catering**

gurkincatering.com  
info@gurkincatering.com  
07961 892 186

**Tasting Plates**

tastingplates.com  
info@tastingplates.com

**The Clink**

thelinkcharity.org  
enquiries@theinkevents.com  
020 7147 6724

**Suzanne James**

SuzanneJames.co.uk  
info@suzannejames.co.uk  
020 8693 6331

**Lick Me I'm Delicious**

lickmeimdelicious.com  
bookings@lickmeimdelicious.com  
0203 637 1206

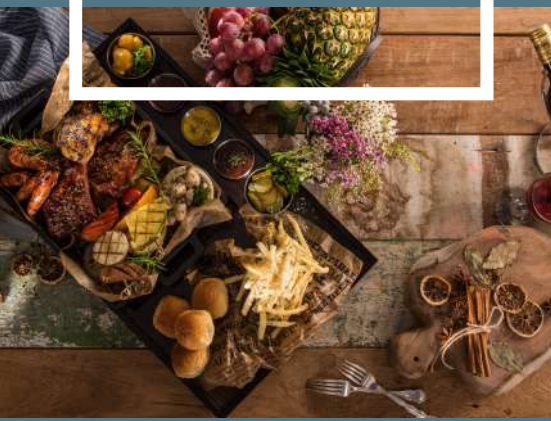
**Little Piggy**

littlepiggycatering.co.uk  
charlie@littlepiggycatering.co.uk  
07764 336911

**We are a licensed venue so please let us know if you would like a bar and we can put you in touch with our partner (who operates all our bars) for full details.**

All caterers must have PLI and a food hygiene certificate. External caterers can be used for £350.

CATERING



TECHNICAL

St Mary's has a comprehensive technical specification including sound, visual and lighting systems and dedicated superfast fibre internet.

The Great Hall includes a high-quality, top-line D&B speaker system packing over 10kW of amplification power. Combined with a Midas mixing console capable of 32 input channels (including wireless microphones), the sound system is capable and flexible enough to cover all your event's specifications.

The full HD visual system is equally highly specified: a retractable 4m-wide projection screen is suspended above the stage with four LED displays fitted to ensure maximum visibility throughout. Comfort monitors are installed for presenters on the stage, with the flexibility to plug in tablets or laptops on the stage or within the control booth. Distribution to some areas of the Undercroft is also provided.

A two-universe DMX lighting system, including distribution, covers the stage and provides colour-selectable house lighting throughout all areas. This is fully expandable to suit each client's needs.

St Mary's Venue is situated in Zone 1 of central London, just north of Oxford Street. This excellent location makes travelling to the venue easy and convenient.

The nearest stations are:

**Marylebone** 5 minutes  

**Edgware Road** 6 minutes 

**Baker Street** 8 minutes 

**Marble Arch** 12 minutes 

St Mary's does not own any parking spaces.

The nearest car parks are:

**Secure Parking**

170 Marylebone Rd

**Citi Park**

5 Bell Street

**Paid street parking is available**

The full address is:

St Mary's Venue Hire

Wyndham Place

London, W1H 1PQ

TRAVEL





020 7258 5047

[stmarysvenue.com](http://stmarysvenue.com)

[venue@stmaryslondon.com](mailto:venue@stmaryslondon.com)

Wyndham Place, London, W1H 1PQ