

A photograph of two children from behind, looking at a screen. The child on the left is a girl with dark hair in a ponytail with a large grey bow, wearing an orange and purple patterned shirt. The child on the right is a boy with short dark hair wearing a yellow shirt. A white rectangular box is overlaid in the center containing the text 'EARLY AUTISM PROJECT®'.

# EARLY AUTISM PROJECT®

WELCOME TO HOPE | #LOVESOMEONEWITHAUTISM





“

## OUR VISION

It is our vision to provide world-class services that support individuals with autism and their families in leading fulfilling lives.

”

# ABOUT EAP MALAYSIA



## WHO WE ARE

Early Autism Project (EAP) Malaysia is the pioneer of Applied Behavioural Analysis (ABA) treatment in Malaysia and was founded by Wisconsin Early Autism Project in September 2006.

In 2016, EAP Malaysia launched its nonprofit initiative, The Hope Project, in partnership with Yayasan Kajian dan Pembangunan Masyarakat (YKPM) to make world-class services for autism accessible to all.



## OUR TEAM

With a combined experience of more than 60 years, our Clinical Team are trained and experienced in bringing the best standards of intensive behavioural treatment to individuals with autism.

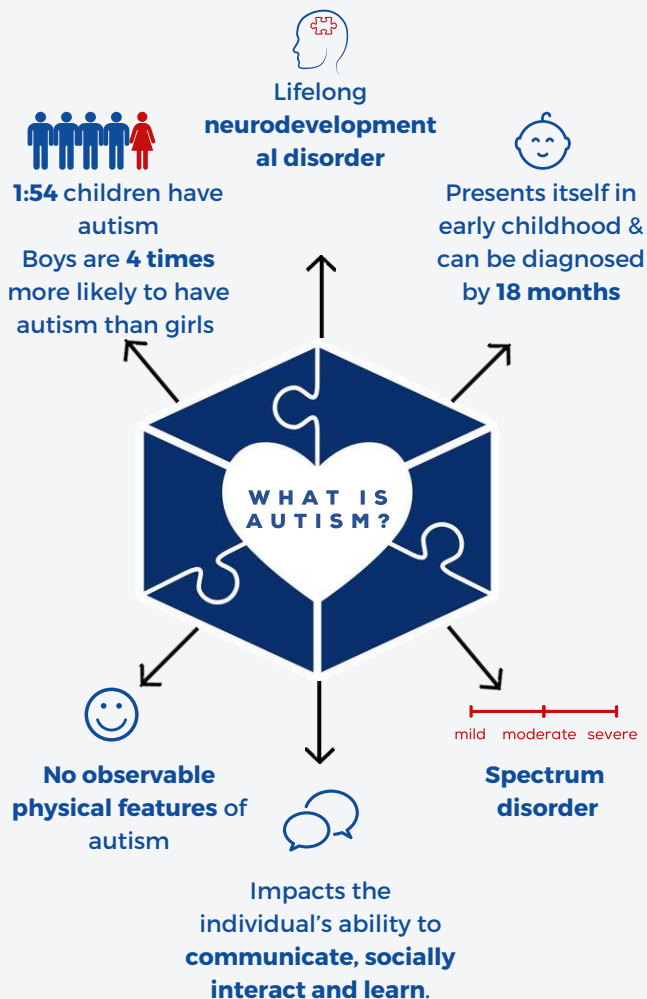
Our therapy team comprises a dynamic group of people who are committed to providing quality treatment services to individuals with autism, whilst upholding international standards.



## OUR IMPACT

EAP has provided services to over 400 individuals from 30 different countries, as well as international supervision to Kuwait, Denmark, Singapore, Brunei and New Zealand.

The Hope Project has provided 3 scholarships, supported nonprofit centres, as well as conducted multiple autism awareness events and campaigns all across the schools in Klang Valley.



## RED FLAGS

- ▶ No babbling or cooing by 12 months
- ▶ No gestures by 12 months
- ▶ No single words by 16 months
- ▶ No 2 word phrases by 24 months
- ▶ Any loss of language skill at any age
- ▶ Does not point or show interest in things
- ▶ Does not respond to name called
- ▶ Does not share interest by bringing an object to an adult
- ▶ Does not show an interest in other children
- ▶ Does not refer to objects pointed at
- ▶ Does not imitate adult's movement



## WHAT IS ABA?



Applied Behavioural Analysis (ABA) is based on operant conditioning principles, where complex skills are **broken down**, paired with **reinforcement** and provided with **sufficient practice**.



The **gold-standard treatment** approach for autism spectrum disorder, with over 1000 journal articles to support the efficacy of the ABA approach.



The only **research-based treatment** for autism with findings that almost 50% of children who receive it are able to catch up to their typical age.

## WHY IS ABA EFFECTIVE?



INDIVIDUALISED  
PROGRAMME



INTENSIVE HOURS  
(35 hours a week)



ONE-TO-ONE  
TEACHING



EARLY INTERVENTION



START WITH SUCCESS



POSITIVE TEACHING  
APPROACH



MULTI-LEVEL  
SUPERVISION



COMPREHENSIVE  
PROGRAMME



# OUR SERVICES



## INTENSIVE PROGRAMMES

Full-Time Therapy  
Half-Time Therapy

*Locations: Home-based, Centre-based, School*



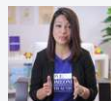
## INITIAL APPOINTMENTS

Diagnostic Evaluation  
Initial Screening  
Developmental Assessments



## OTHER SERVICES

Group Learning  
Parent Training  
Workshops



## NON-PROFIT

Free Online Resource Platform

the  
hope  
project.

“ Making world-class services for autism accessible to all. ”

A non-profit initiative by EAP Malaysia, in partnership with YKPM.



**CAMPAIGNS**



**SERVICES**



**RESOURCES**

AUTISM  
AT HOME

Autism At Home is a FREE online resource platform for autism brought to you by EAP Malaysia's non-profit initiative, The Hope Project.

[www.autismathome.co](http://www.autismathome.co)



1

## CONSULT A CLINICIAN

Get a diagnosis from a professional and trusted clinician who has experience in the field of autism.

2

## PLAN FOR TREATMENT

Make an appointment with us and we'll be happy to speak to you about your child and treatment options.

3

## GET EQUIPPED

Head over to our FREE online resource platform, Autism At Home, to learn about effective strategies for autism that you can implement in your own.

# NEXT STEPS



☎ (60) 3 2094 0421

📞 (60) 13 319 0301

✉ [enquiries@autismmalaysia.com](mailto:enquiries@autismmalaysia.com)

🌐 [www.autismmalaysia.com](http://www.autismmalaysia.com)