



Delhi International School Edge



www.disedge.ac.in

OUR MOTTO

Trees are our inspirational source, lifeline to every breathing soul in the universe that showers it's virtues-Fresh air, shade and fruits to all the beneficiaries without any discrimination, motivated us to venture into the field of Education. Influenced by the philosophy we at DIS edge educate the new generation by inculcating in them good manners and healthy habits by sharing, caring, respecting and loving one and all.

Inspired by the multifarious qualities of the banyan tree, we have adopted it as our logo. It is not only a huge tree but has widest & deepest penetrating roots, amongst known trees that also send off new shoots from it's roots. It regenerates and live for an incredible length of time, it's size and leafy shelter are valued as place of rest, reflection and protection.

ABOUT US

Delhi International School Edge aims to empower every young scholar who enters its threshold with an unquenchable thirst for knowledge, an indomitable spirit of reasoning, a higher level of consciousness and above all to evolve into complete human beings.

The School aims at all round development of a child's personality by providing holistic education, a relaxed and friendly atmosphere and an environment enriched with all necessary tools of learning. The school strives to carve out the personality of its children beyond academics to infuse strong critical reasoning skills with a value infused core. The focal point in the process is the development of a child into future ready citizen of the world.



OUR VISION

The school focuses on five fundamentals – **Academic Excellence, Character Development, Leadership Attitude, Self motivation and Physical development.** We celebrate a culture of excellence by nurturing both scholastic and co - scholastic areas and include environmental issues, we include moral values and respect for culture in students to help them explore new horizons ***Creating Global Heads with Hearts***



MISSION

The school's mission is to focus on the nurturing of the core skills in the following domains identified as 5 Cs

CREATIVE THINKING

- Take intellectual risks

- Develop cross-disciplinary knowledge and global perspectives

- Use natural curiosity to promote intrinsic motivation and love of learning.

CRITICAL THINKING

- Identify, manage, and solve complex local and global problems

- Evaluate validity of information by filtering for bias and reliability

- Ask meaningful questions

- Analyze, synthesize and apply knowledge

CONSCIOUS MINDFULNESS - Emotional Strength to be fully present, aware of where we are and what we're doing, and not overly reactive or overwhelmed by what's going on around us.

CARE FOR ENVIRONMENT - Children learn how they affect the environment & how the environment affects them, including important concepts, such as aesthetics, respect, caring for the earth, and the interrelationships among humans and the habitat to promote Sustainability.

COMPASSION - Social well being by understanding & acting on compassion for self, others and the earth.

OUR INSPIRATION

Words are insufficient as we write about our dear Sir, Who was a true teacher, guide and Philosopher of Delhi International Group of Schools.

Dr.R.P Singhal held various senior responsible positions in his time from being the former CBSE chairman to the Advisor of World Bank. In April 2007, he was honored with the **“Life long contribution to School Education Award”** by chief Minister of Delhi.

His words like beacon of light continue to inspire us to toll for the noble cause of education. His lofty ideas and profound wisdom have been the motivating forces that have raised DIS group of Schools to a higher platform of progress and growth.



DR. R.P. SINGHAL
(1934 - 2012)
Former Chairman

A right step in the right direction, with the right intentions for benchmarking the highest ambitions'

The Sun is the ultimate source of light extinguishing the darkness of the world, the infinite symbol of benevolence, the eternal source of inspiration. The knowledge, likewise, magnifies its radiance to brighten up the man's position to transform it from the wilderness to the supreme glory. Having an indelible imprint of this thought—Delhi International School came into existence, founded by the philanthropist and a successful business magnate Mr. Mahesh Kumar with an ambition to engage some of the brilliant minds of the region in the process of developing India as a frontrunner in the path of success.



MAHESH KUMAR
Group Chairman

Today, DIS Group of Schools, enthused by this inspiring tree has adopted it as Group's Logo and is spreading its branches in Dwarka and soon in Gurgaon . The Group apart from running its own schools goes out of the way to reach out the underprivileged masses. In its corporate social service endeavor, it has silently adopted over 100 schools in Rajasthan along with other infrastructure to provide them with the basic facilities .

This is DIS Group's first move towards the exploration of new horizons to groom students holistically and ultimately

'Creating global heads with hearts'

It's a matter of pride to pen down the message of DIS edge. My heart fills with immense pleasure as I perceive the progress being made at DIS edge. The seeds of an idea sown in 2014 have quickly come to fruition, and the school is growing into strong sapling.

Schools were once described as the future within four walls. That being true, we have the responsibility to make the most exciting, creative and secure places we can. As a parent as well as the chairman, I know that our children are our precious gift and they are the future too. DIS edge therefore is committed to provide an outstanding start for a child's education to transform a kindergarten child into a sensitive and responsible global citizen of the future. The values and environment we provide for our children are sustainable and help them successfully grow through their formative years. The investment we put in to our children today will help them achieve greater heights and create the unimaginable.

I extend my warm wishes to the Principal, Staff and Students of DIS edge to continue this journey on the road of excellence. We aim to provide a holistic learning experience by encouraging individuality and interacting with our community. I look forward to an enriching engagement with the parent community and hope you will give our school, the opportunity to prepare your child for a happy and successful future.



MR. KASHISH GOYAL
OUR CHAIRMAN

OUR PRINCIPAL

“It takes all the running you can do, to keep in the same place. If you want to get somewhere else, you must run at least twice as fast !”

The world is fast changing and becoming increasingly uncertain and competitive. The real mantra of success is to be able to dream, a dream that has a community vision, and to work hard to turn the dream to a reality, standing true to the challenges of time, people and the climate.

At DIS edge, the vision and philosophy of the institution is build around the iconic banyan tree, to impart deep rooted foundation to our children so that they can spread out their being to become a giver to the world. We have carefully curated and picked the learning methodologies that ensures the development of the core

skills required for the future : creativity, critical thinking & problem solving. A balanced exposure to technology and values isensured to foster the right blend of EQ and IQ. The learners are exposed to real life situations for observing, fighting and nurturing with empathy and environment consciousness. The assessments are developed to inculcate self discovery over recall skill; enabling children to discover themselves and understand their innate skills likes and dislikes.



MRS. ANUBHA SRIVASTAVA
Principal

The world is sustained by collaboration and not competition. We uphold the idea that education is most definitely a stirring of the intellect and imagination along with the development of right judgment and an inclination of being of service to our community in whatever situation we find ourselves in. The school is a second home to the children. At home, the involvement of the parents with the children shapes their basic attitudes and interests. The culture of the family is deeply ingrained in their subconscious. The diverse families become one extended family in school, learning from and blending together, enriching themselves further in the secure environment of the school. DIS Edge is the link to nurture the culture of the children to community thought for tomorrow .

OUR SPECIAL PROGRAMS

1. Mr. Anand Kumar of Super 30 fame as the academic advisor.
2. First and only School in Dwarka to have a Space Lab.
3. Round the year swimming with temperature controlled indoor swimming pool.
4. All round co-curricular development through clubs like Robotics, Abacus, STEM, Music & Dance, Arts, Environment.
5. Charter for compassion by students for value building.
6. Small student teacher ratio with large and well ventilated class rooms.
7. After School remedial classes and subject support program on need basis.
8. Educational Trips and Excursions strengthening experiential learning.
9. Day Camps & workshops for Students and teachers.
10. Infirmary with motherly warmth and homely care.
11. Annual health Check up in collaboration with best service providers : centre for sight for eyes; Clove Dental for oral health care and Venkateshwara hospital for general checkup .
12. Spic Macay Programme to propagate out cultural roots and indigenous performing arts.
13. International Exchange Programme through British Council ISA programme; Microsoft and Adobe cross country exchanges for global outreach .



THE DIGITAL WORLD

The school has introduced the e-learning system in all the Classes with LCD Projector Equipped with e curriculum from Extramarks.

A P.C connected to a high-end dedicated server stationed at the Knowledge Centre serves as a hub of inhouse resource development centre.

Innovative methods and technology are used as important tools for exploring the ever changing and ever widening horizons of knowledge and education with a shift of learning mechanism from pedagogy to andragogy and heutagogy.

Critical thinking and problem solving skills are addressed by AI & STEM integrated lesson plans through smart classes, proving a flexible, adaptable and resilient learning model of integrated curriculum.

Digital tools enable higher efficiencies in teaching children how to think, rather than what to think. Students are availing the benefit of continuous and formative assessment creating power for more possibilities



LABS-THE CENTERS OF EXCELLENCE

DIS edge has well equipped and spacious laboratories to provide students adequate hands on experience in the areas of Physics, Chemistry, Biology, Computers, Mathematics, Language, Social Studies, Home Science, Biotechnology, Geography, Environment, Robotics, Artificial Intelligence to ensure practical knowledge is simultaneous , keeping the theoretical concepts grounded and well imbibed.

Time to time, educational visits to Higher Institutes are organised and guest lectures are facilitated for our students to stay updated with the trends and state of affairs.

We acknowledge the higher academia from IIT, Delhi University, Pusa Institute, National Physical Laboratory, Natural History Museum for opening their doors to our school children , proving them a window to tomorrow.



SCHOOL LIBRARY

The school library is the hub of strategic thinking and development, stocked with books & digital resources of all genres; it provides resources a rich breeding ground for literacy, debates & discussions, activity planning. Movie screening & analysis, where young children don the hat of authors, critics, philosophers, performers & read, think, speak and live the world by words.



INFIRMARY & STATE OF HEALTH PRACTICES

The school infirmary is frequented by children, to check their height, weight & greet our lively nurse who never fails to drop a health tip to every child she comes across.

Complimenting them for a milky bright smile, stopping them to quiz on nutritious meals, organizing health workshops & fitness games is what makes her room a fond nest for all children; healing their emergency medical needs with a mix of well stocked & updated medical services and easy to reach warm & motherly love and care.



DIS EDGE CAFE

Hygienic and healthy food in neat and clean environment is daily served to the children.

Right from kindergarten age, the kids learn not to waste food, eat adiverse variety of vegetables, cereals and cuisines and follow the right table manners.



TRANSPORT

A fleet of Air Conditioned GPS enabled DIS Edge buses ply across Dwarka and neighboring areas. Student's safety is our foremost priority, we have well trained drivers and attendants and each bus has on board a female duty staff. Our buses ferry tales of shared lunch boxes, classroom anecdotes being discussed with friends, enthusiastic mornings to reach school and unwilling afternoon goodbyes with a promise to meet soon next day.



OUR CURRICULUM

The school follows CBSE curriculum. The pre primary section focuses on developing Linguistic and numeric skills in children with activity loaded curriculum. The primary section is structured on exploration to develop the enquiry and curiosity for facts and knowledge in children. The middle school curriculum is enriched with “learning by doing”. Secondary and senior secondary is strictly as per CBSE norms. At all levels, excursions, activities, lab work, interaction with in school and outbound resources is adequately provided along with national and global collaborations.



HOLISTIC DEVELOPMENT THROUGH INTEGRATED ACTIVITIES

Our carefully designed activities focusing on values and learning helps DISHONS in aiming high. The range of activities includes Music, Arts, Dance, Gardening, IT Skills like robotics, artificial intelligence, Science skills like STEM , Experiment boxes, Linguistic activities like dramatics, Debates, Declamations, Social Science activities Awareness Drives and MUNs. These leads to development of complete personality i.e. intellectual, moral, aesthetic, social and spiritual



SCHOLASTIC ACTIVITIES

- **Debates** - Competitions are held in the school and at Inter School levels.
- **Quizzes** – It helps with concentration, identify gaps in knowledge, build confidence and help children retain information.
- **Olympiads** - Olympiad Examinations help to identify a child's capability and real potential that may help him survive better in today's modern competitive world. They motivate students to endeavor for better & deeper understanding of scientific facts so as to enhance their reasoning, analytical and problem solving skills.



PROUD OF OUR NATION'S ... A SECULAR STATE

The language across all religions is same : the philosophy of love to fellow beings, generosity of giving to the needy, Celebrating the seasonal harvest as festivals to cherish the bountiful of gifts from mother earth! Multi religious celebrations help dissolve the differences and identify the similarity on their thoughts. It also develops an acceptance of differences born out of regional and cultural variations which are nothing but a geographical uniqueness into a societal being. We celebrate the diversity with equal zeal and enthusiasm .

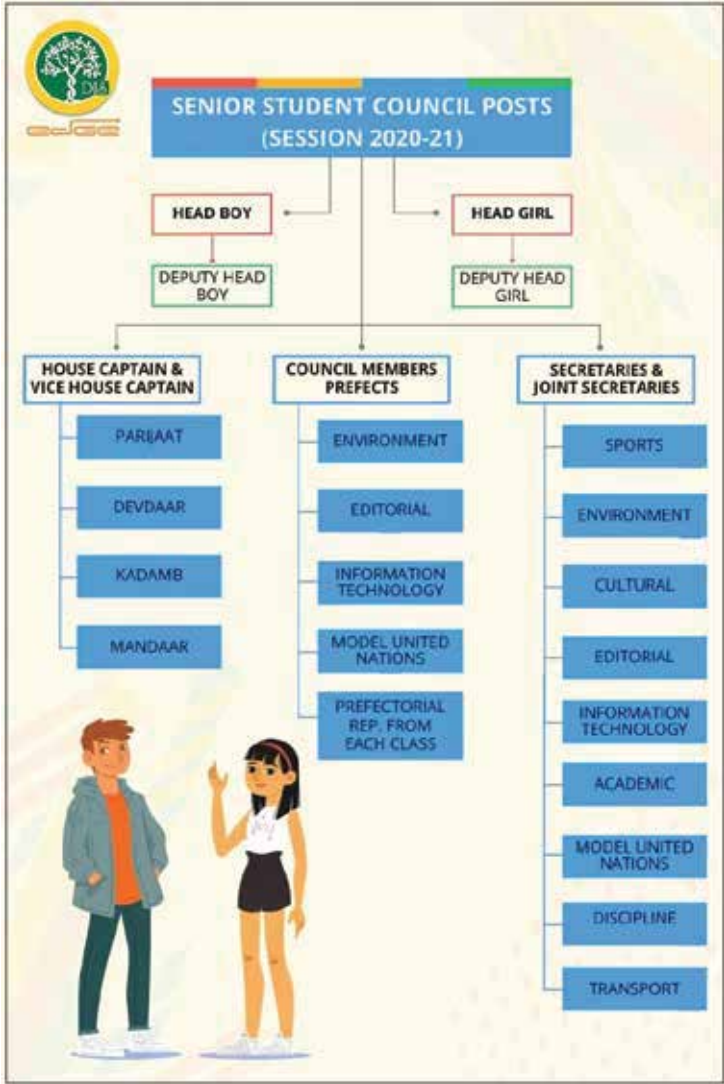
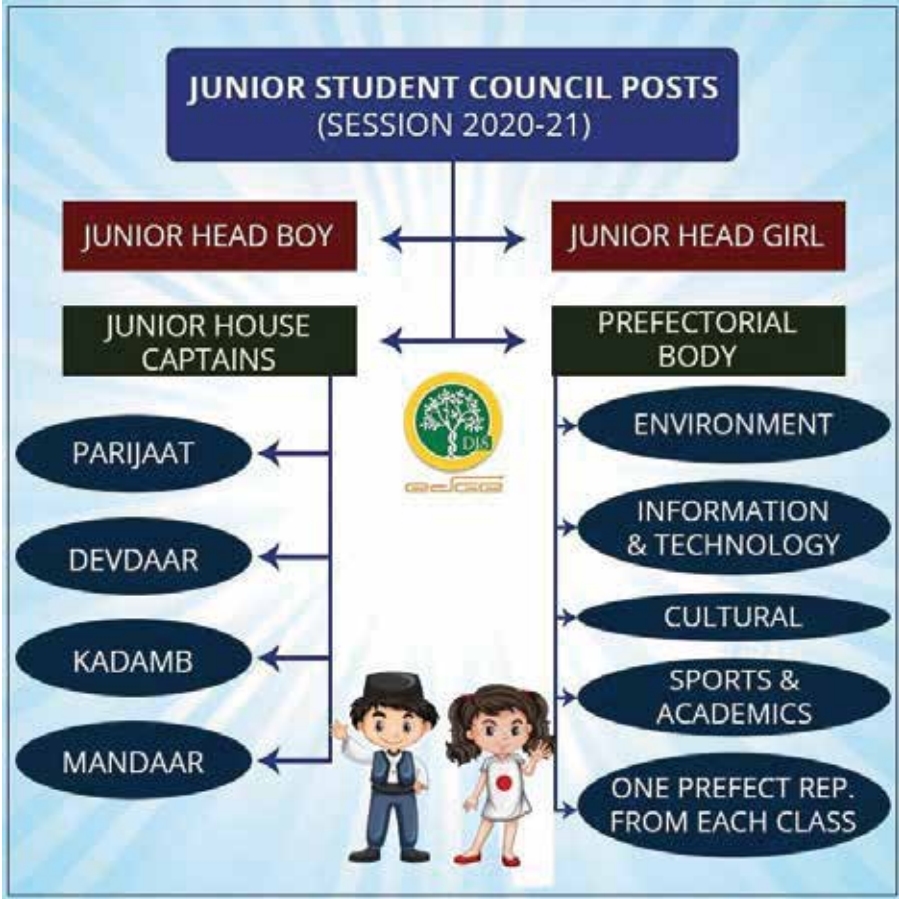


APPRECIATION OF ART & CULTURE

- Dance, Music and theatre
- Workshops, Inviting dignitaries
- Visits to Museums and Monuments
- Cultural Exchange programs on different State and Nations
- Crafts and Traditions



STUDENT SECRETARIAT



HOUSE SYSTEM

The children belong to one of the four houses and compete with other houses, standing united for their respective houses, learning team spirit, leadership and organising skills. The names are Paarijat, Mandaar, Kadamb & Devdaar.



CLUBS : THE HUBS OF GROOMING HOBBIES & INTERESTS

- Robotics
- Spark Astronomy
- Theatre
- Wonder Chefs
- Eco Club
- MUN
- Wordsworth – Language Lab
- Abacus
- Stem & Coding
- Heritage
- Community Service
- Literary Club
- Gymnastics
- Chess
- Bagpiper Band
- Junior Sports India
- Skating
- Yoga
- Archery
- Futsal
- Swimming



HEALTH & PHYSICAL EDUCATION AS AN INTEGRAL BRANCH OF ACADEMICS

Sports is an integral part of our philosophy related to holistic development of a child not only it leads to the physical development but also inculcate the team spirit and healthy competition and build character. To win humbly and to lose gracefully is in order.

At DIS edge we believe in overall development of our students so we provide specialized training for various sports like Swimming, Karate, Tikandoo, Aerobics, Yoga and may more through expert coaches.

Our DISHONS have brought laurels at district, state and International levels.



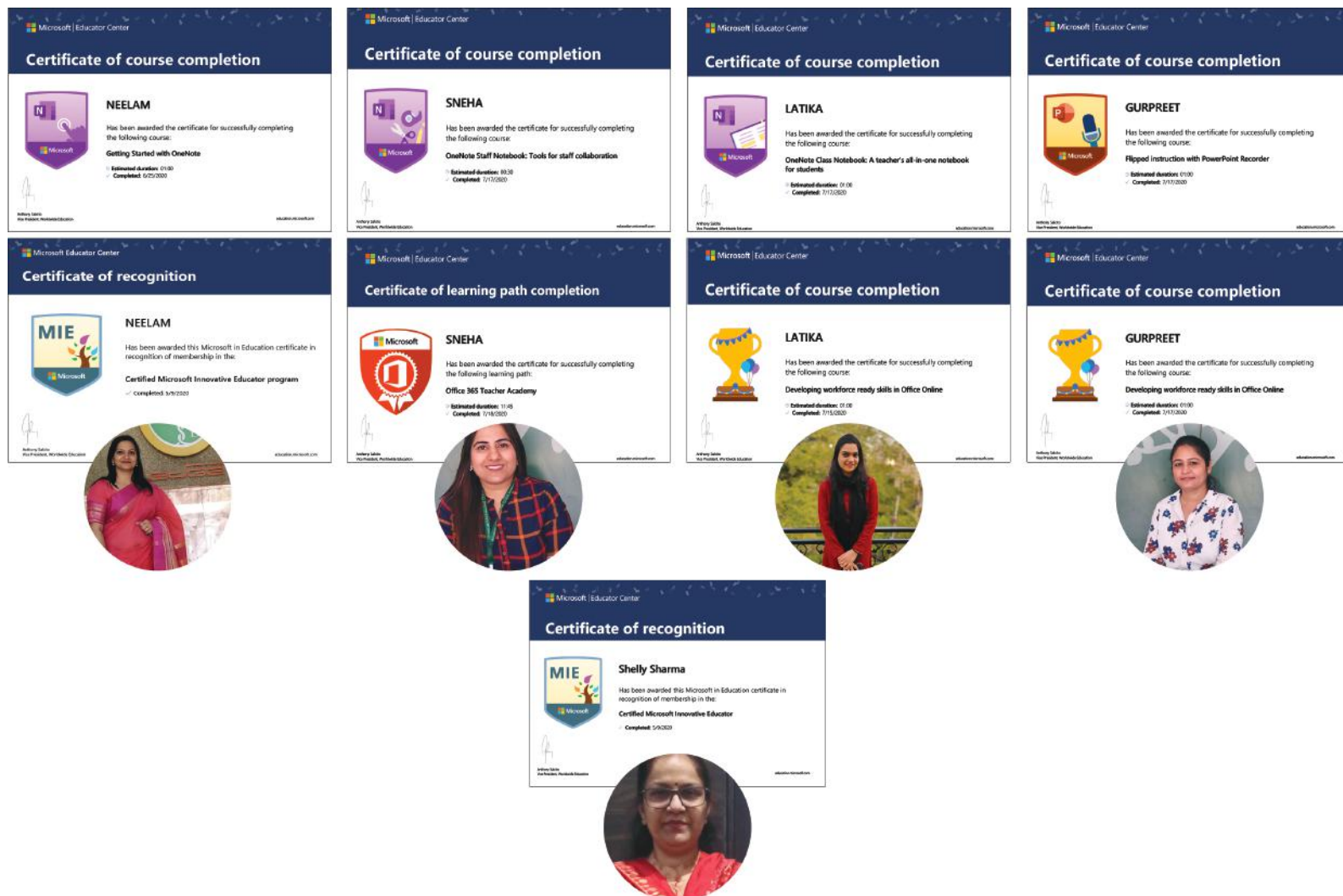
FACULTY DEVELOPMENT PROGRAMS

Development of teachers is core to the development of a school and its students. We engage in diverse programs to keep the knowledge and spirits of our faculty higher and kindled. Workshops on subject areas, life skills, wellness, health, child psychology etc are regularly conducted for all staff members. Certificate courses are time to time conducted in collaboration with institutes of repute.



ADOBE AND MICROSOFT PARTNERSHIP

Teachers are trained for Microsoft Innovative Educator and ADOBE Spark program to involve students in projects with their peers across the globe and become a part of global education fraternity learning and exchanging ideas from different parts of the world.



APPRECIATIONS & RECOGNITIONS FOR STUDENTS

- Scholastic Awards for Academic Excellence
- Scholar badges
- Rolling trophies for Co Curricular Excellence
- Munshi Prem Chand Shreshtha Abhivakta Sammaan : Best Orator (Hindi)
- Wordsworth : Best Orator (English)
- Rabindra Kala Sammaan : Artist of the year
- Tansen Award : Singer of the year
- Nrutya Kalaa Vibhushan : Dancer of the year
- Star child of the month



EDGE

Delhi International School Edge

Sector-18, Dwarka, New Delhi-110075

Website - www.disedge.ac.in