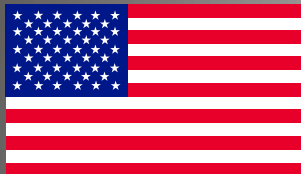



# NTM Inc.

ONE STOP TOOLING AND MACHINE SHOP

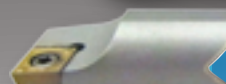
## 2022 Product and Services Catalog



Made in the USA




Precision Production Machining  
page 2



Custom Tool Grinding  
page 4




NU Tool  
page 6




Indexable Tool Repair  
page 6




Magnetic V-Blocks  
page 7



“Smart Flow” Swiss Tool Holders  
page 8



Stubby Indexable Tools  
page 11



Stubby Drills  
page 12



NU-Head  
page 13

NTM, Inc.  
151 Longfellow Street N.E.  
Minneapolis, MN 55432  
Phone: 763-780-1420 | 800-274-4686  
Email: [sales@ntminc.com](mailto:sales@ntminc.com)  
[www.ntminc.com](http://www.ntminc.com)



## PRODUCTION MACHINING CAPABILITIES STATEMENT

"NTM was started by my dad, Bob Thielen in 1976 to not only start his own business, but to become a niche machining company that supported national defense programs. He worked in the shop every day and grew the company to be a well-respected shop, now with our own product line of cutting tools. As a certified woman owned business, my goal continues to be the same. We continue to support DoD, holding an excellent supplier rating from our customers."

~ Barb Dorumsgaard, President

### PRECISION MACHINING CORE COMPETENCIES

#### • Production CNC Milling

- Up to 60" of "X" travel (left to right)
- Up to 29" of "Y" travel (front to back)
- Up to 25" of "Z" travel (up and down)

#### • Production CNC Turning

- Live tooling lathe capability with sub spindle and bar feeder
  - ◆ Size of chuck (main spindle) 8"
  - ◆ Size of chuck (sub spindle) 6.5"
  - ◆ Max Bar stock dia. 2.6"
  - ◆ Max Bar length 36"
  - ◆ Max Turn length 20.47"

### EQUIPMENT LIST – 25,000 Square Feet of Production Area

- (2) CNC Mitsubishi Machining Centers
- (2) OKK VM7III
- DAEWOO DMV-500
- DAEWOO Mynx 540
- Doosan Puma 2100 Live Tooling Lathe sub spindle w/bar feeder
- Daewoo Puma 8S Lathe
- Mitsubishi MTC8A lathe
- (2) HAAS VF-1 Mills
- HAAS VF-2

**NTM line of OEM Stubby® Indexable cutting tools  
can be found on our website  
<https://www.ntminc.com>**

### OUR QUALITY POLICY

NTM is committed to comply with customer requirements and to provide on-time quality products through continuous improvement of our processes.

DUNS #071783401

#### NAICS Codes:

- 332710 Machine Shops
- 332721 Precision Turned Product
- 333515 Cutting Tool & Machine Tool Mfg.

ITAR Registrant

### CERTIFICATIONS

ISO 9001:2015

WOSB Cert. # WOSB181051

WBENC Cert. # WBE1801244

### PAST PERFORMANCE:

- Vendor for defense for 40 years
- 2020 Gold Star Rating
  - ◆ Outstanding Quality
  - ◆ Outstanding On-Time Delivery



**Made in USA**



## Products & Services

### NTM Contacts

Main Number **(763) 780-1420**

**Ryan Malik** [ryanm@ntminc.com](mailto:ryanm@ntminc.com) # 210  
Custom Tool Grinding, Sharpening

**Lisa Stumpf** [lisas@ntminc.com](mailto:lisas@ntminc.com) # 212  
Accounts Receivable, V-Blocks, Customer Service

**Todd Robyn** [toddr@ntminc.com](mailto:toddr@ntminc.com) # 205  
Custom Indexable Tooling

**Kelly Severson** [kellys@ntminc.com](mailto:kellys@ntminc.com) # 201  
Stubby Bars and Drills, Smart Flow, Tool Repair,  
NU-Head, Purchasing Department

**Keith Pickett** [keithp@ntminc.com](mailto:keithp@ntminc.com) # 204  
CNC Machining Department

**Byron Grinager** [byrong@ntminc.com](mailto:byrong@ntminc.com) # 213  
Shipping Department

**Eddie Engesether** [eddiee@ntminc.com](mailto:eddiee@ntminc.com) # 209  
Quality Department

**Vickie Parks** [vickiep@ntminc.com](mailto:vickiep@ntminc.com) # 202  
Business Development

**Jerry Grell** [grellg@outlook.com](mailto:grellg@outlook.com) 763-355-2109  
Account Manager

Custom Tool Grinding	page - 4
Sharpening Capabilities	page - 5
Custom Indexable Tooling	page - 6
Magnetic V-Blocks	page - 7
Smart Flow Swiss Holder	pages - 8 & 9
Stubby® Boring Bars & Drills	page - 10
Stubby® Advantage	page - 11
NU-Heads	page - 13
Same Day Shipping	page - 14
Boring Bar Identification	page - 15

#### Boring Bars

Carbide	<a href="#">MCLN-MWLN-MTLN</a>	page - 16
	<a href="#">SCLP-SCLC</a>	page - 17
	<a href="#">SDUP-SDUC</a>	page - 18
	<a href="#">STFC-STFP</a>	page - 19
	<a href="#">SWLP-SWLO</a>	page - 20
	<a href="#">SWLC-STJO</a>	page - 21
	<a href="#">STUP-STUC</a>	page - 22
	<a href="#">STUN-CTFP</a>	page - 23
	<a href="#">NELL-NKLC</a>	page - 24
	<a href="#">LSER-NER</a>	page - 25
Steel	<a href="#">MCLN-MWLN-MTLN</a>	page - 26
	<a href="#">SCLP-SCLC</a>	page - 27
	<a href="#">SDUP-SDUC</a>	page - 28
	<a href="#">SWLP-SWLO</a>	page - 29
	<a href="#">STFC-STFP</a>	page - 30
	<a href="#">STUP-STUC</a>	page - 31
	<a href="#">STUN-CTFP</a>	page - 32
	<a href="#">STJO-NER</a>	page - 33
	<a href="#">NELL-NKLC</a>	page - 34

NTM Inc., One Stop Tooling and Machine Shop, for over 40 years NTM has served customers with custom tool grinding, from making tools of every shape and form to re-sharpening them back to new again. Serving OEM's with tooling from the grinding department, Stubby® indexable tooling, indexable NU tool, indexable tool repair and having a precision machining department we are still the One Stop Tooling and Machine Shop our customers count on for solutions. A certified WOSB and ISO 9001:2015 and ITAR registered we are here in the heart of friendly Fridley, Minnesota serving the manufacturing community locally and nationwide.

## CORE COMPETENCIES:

- Versatility and Innovation
- If you can dream up a tool we can make it!
  - Solid Carbide
  - Coolant Thru Carbide
  - Carbide Tipped
  - HSS
  - Special Coatings Available
- High Volume Lights out Manufacturing
- Precision Manual Grinding
- Home of the Magnetic V-Block .0002 total tolerance, parallel and perpendicular
- Tool and Cutter Grinder Machinists with 50 years combined experience

## GRINDING EQUIPMENT LIST:

- (3) Walter Power 500 5 axis tool and cutter grinders
  - (2) with loaders
- (1) ANCA TG7 5 axis grinder
- (1) ANCA RGX 5 axis grinder
- (1) TruTech Revolution CNC Centerless Grinder
- (1) TruTech T23X CNC OD Grinder 10" X 20" length
- (2) Okamoto 12"X24" Surface Grinders
- (6) Cincinnati Monoset Tool and Cutter Grinders
- (3) Cincinnati #2 Universal Grinders
- (3) Makino Universal Grinders
- (1) Hybco Cam Relief Grinder
- (2) Sheffield Microform Grinders
- (1) Colonial Broach Grinder

## OUR QUALITY POLICY

NTM is committed to comply with customer requirements and to provide on-time quality products through continuous improvement of our processes.

**DUNS #071783401**

### NAICS Codes:

332710 Machine Shops  
332721 Precision Turned Product  
333515 Cutting Tool & Machine Tool Mfg.

**ITAR Registrant**

## CERTIFICATIONS

ISO 9001:2015

WOSB Cert. # WOSB181051

WBENC Cert. # WBE1801244

## PAST PERFORMANCE:

- Vendor for Lake City Army Ammunition Plant over 30 years providing cutters and bunters
- Tooling Supplier for OEM's for over 40 years
- Outstanding Quality
- Outstanding On-Time Delivery



ISO 9001:2015 Certified  
Quality Management System

**Made in USA**



# NTM SHARPENING CAPABILITIES

- Carbide and HSS End Mills
- Rougher End Mills
  - Carbide, HSS and Powdered Metal Drills
- Countersinks
- Rota Broaches
- Uni-Bits
- Gundrills
- Threadmills
- Engraving Tools
- Dead Centers
- Reamers
- Center Drills
- Keyway / Woodruff Cutters
- Spot Drills
- Corner Rounds
- Counterbores / Spotfacers
- Spade Drill Inserts
- Slitting Saws
- Broaches
- Taps
- Shapers
- Milling Cutters



NTM also makes and sharpens all types of special tooling in Solid Carbide, Carbide Tipped and HSS.

# CUSTOM INDEXABLE TOOLING

Increasing Productivity with Innovative Tooling Solutions

- SolidWorks Design
- Modular Shank Tools: CAT 40, CAT 50, HSK, Capto, ABS, KM, or straight shank
- Multi Pocketed
- Multi Step
- Coolant Through



## INDEXABLE TOOL REPAIR

Tools Repaired to Manufacturer's Specifications

- Boring Bars
- Turning Tools
- Milling Cutters
- Drills
- Specials

\*To ensure NTM meets the standards for Tool Repair, NTM requires all hardware used for that repair to be sent before quoting the repair. Hardware will be returned to customer.



# ULTRA PRECISION MAGNETIC V-BLOCKS



Part Number	Holding Capacity
41101-90	.030" Ø - .625" Ø
41102-90	.062" Ø - 1.250" Ø

- Case hardened
- All surfaces ground parallel and perpendicular to one another within .0002" total tolerance
- Most accurate way to check small parts, frequently used in the medical industry
- Matched Sets are available upon request

# PATENTED SMART FLOW™

Swiss Tooling System

**A MUST**  
for any  
Swiss Machine!



**Call us TODAY!!**

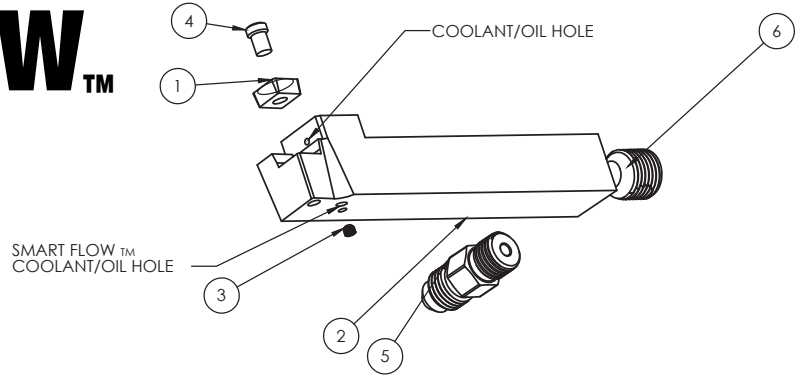
Innovation speaks loudly and NTM has captured the leading edge of Swiss Tooling with our Patented Smart Flow tool holder. This tool will not only deliver cutting oil to the tip of the insert, but will also direct a stream of oil towards the next tool station. This allows for fluid to be directed at an additional tool and keep chips out of the work zone.

**NTM** offers three different pocket styles. The 35°, 55° and the 80° in two shank sizes, the 1/2" and 5/8".



# SWISS STYLE HOLDER

# SMART FLOW™



Item No	Part Number	Part Description	Qty
1	see below	Insert (not included)	1
2	see below	Tool Holder	1
3	SW4-40 SET SCREW	4-40 Set Screw / Plug	2
4	TS-4	M4 X .7 Insert Screw	1
5	SW1/8-27 FITTING	1/8-27 NPT-JIC 4	1
6	SW1/8-27 PLUG	1/8-27NPT Set Screw Plug	1

## SCLCR

\*Turning & Facing  
\*Uses CCMT insert

Catalog Number	Shank	L	F	H	Insert Screw	Insert
		(over insert)	(over insert)	(over insert)		
SW-SCLCR 083C	0.5	4.25	0.5	0.5	TS-4	CCMT 32.52
SW-SCLCR 103C	0.625	4.25	0.625	0.625	TS-4	CCMT 32.52

## SDJCR

\*Turning & Profile  
\*Uses DCMT insert

Catalog Number	Shank	L	F	H	Insert Screw	Insert
		(over insert)	(over insert)	(over insert)		
SW-SDJCR 083C	0.5	4.25	0.5	0.5	TS-4	DCMT 32.52
SW-SDJCR 103C	0.625	4.25	0.625	0.625	TS-4	DCMT 32.52

## SVJBR

\*Turning & Profile  
\*Uses VBMT insert

Catalog Number	Shank	L	F	H	Insert Screw	Insert
		(over insert)	(over insert)	(over insert)		
SW-SVJBR 082C	0.5	4.25	0.5	0.5	MS-1153	VBMT 221
SW-SVJBR 102C	0.625	4.25	0.625	0.625	MS-1153	VBMT 221



Made in USA



# STUBBY® BORING BARS & DRILLS



- Shorter Shanks
- Shorter Flute Lengths
- Greater Rigidity
- Longer Insert Life
- Higher Production Rates

## Introducing **STUBBY® KITS**

Our Most Popular **STUBBY®** Catalog Boring Bars with Inserts in a Convenient Kit

One Bar + 5 Inserts - 40% Savings on Inserts

\*\*Inserts listed are also available for purchase in 5pcs quantities at list price.



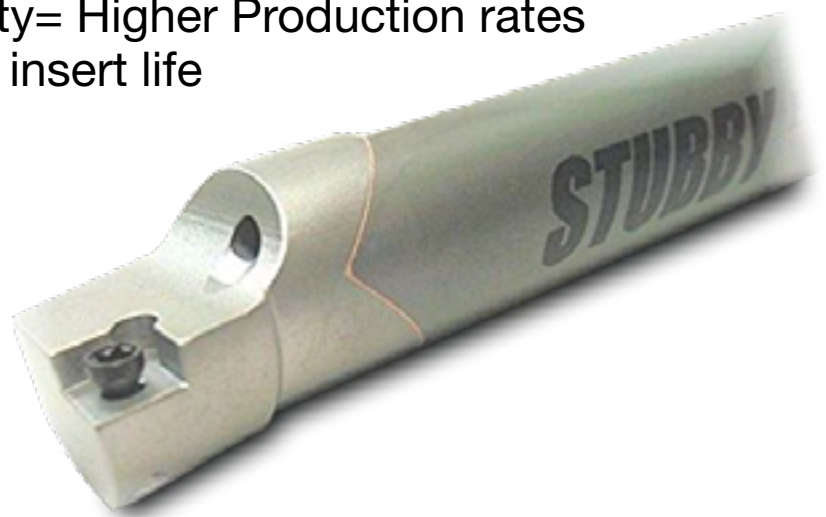
# THE STUBBY® ADVANTAGE

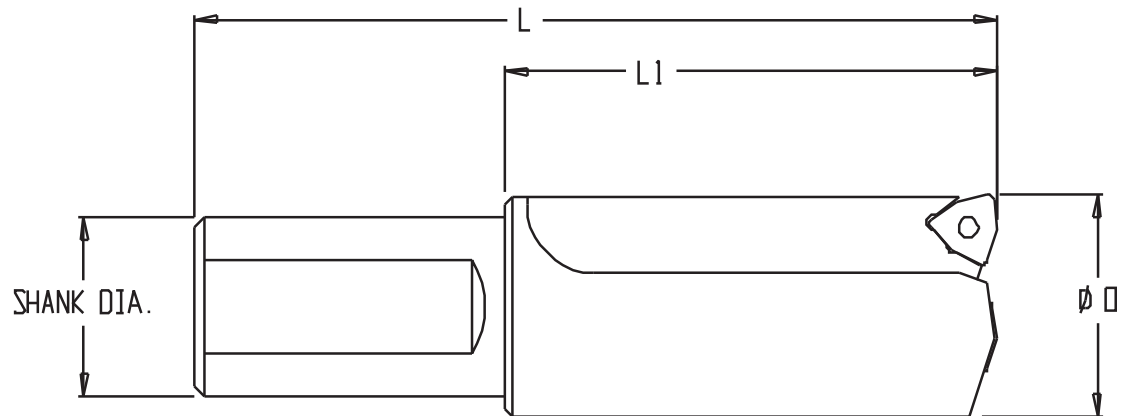
## Stubby® Boring Bars:

- Patented Chisel Cut: "V" adaptation for steel head to carbide shank fit
- "V" allows more surface to braze joint
- The flat surface of the "V" allows gases of the brazing application to escape making the steel to carbide braze a stronger bond
- Offered in solid and coolant through
- Over 150 styles and sizes of heads carried in stock

## Stubby® Drills:

- Designed with Shorter Flute Lengths and Shanks
- Fits Standard Collet and End mill Holders
- Short Flute Length = Rigidity
  - Greater Rigidity= Higher Production rates and extended insert life





**NTD**  
Stub length  
Indexable Drills  
\*Uses WOEX insert

Stubby® Drills require Komet Unisix Inserts.  
For technical support, contact your Komet rep or call 508-918-1371

Catalog Number	D	L1	L	Shank Dia	Insert Screw	Insert
NTD-09	9/16" Ø	1-1/2"	3"	1/2" Ø	N0056040	WOEX 030204-01
NTD-10	5/8" Ø	1-1/2"	3"	1/2" Ø	N0056040	WOEX 030204-01
NTD-12	3/4" Ø	1-1/2"	3"	5/8" Ø	N0056040	WOEX 030204-01
NTD-14	7/8" Ø	1-3/4"	3-1/2"	3/4" Ø	N0057552	WOEX 040304-01
NTD-16	1" Ø	2-1/4"	4"	3/4" Ø	N0057510	WOEX 05T304-01
NTD-18	1-1/8" Ø	2-3/4"	4-1/2"	1" Ø	N0057510	WOEX 05T304-01
NTD-20	1-1/4" Ø	2-3/4"	4-1/2"	1" Ø	N0057510	WOEX 05T304-01

↑ Add "C" to the end of the part number for coolant thru i.e. NTD-20C

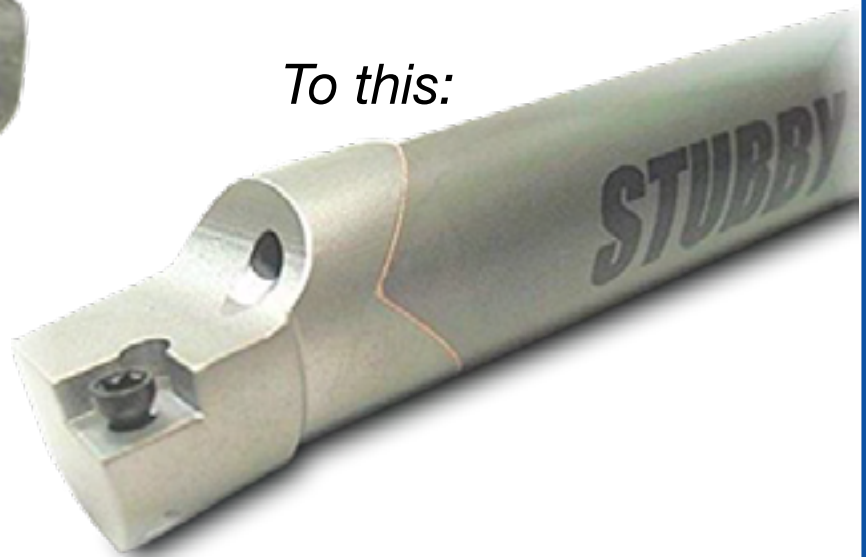
**Stubby®** drills are manufactured to the highest quality standards. They are designed with shorter flute lengths and shanks that fit standard collet and endmill holders.

The shorter flute length gives **Stubby®** drills greater rigidity which translates into higher production rates and extended insert life.

## NU-Head™

### Replacement Head System for Carbide Shank Boring Bars

- Damaged Carbide Indexable Boring Bars Repaired for Half the Price of New!
- 5/16" and up
- 150 Different Sizes and Styles of Heads in Stock





# WE OFFER SAME DAY SHIPPING!

Did you know NTM Inc. offers SAME DAY SHIPPING for all Carbide Boring Bars listed in our Catalog? Order a Standard STUBBY® carbide boring bar by 1PM\* central time and we can ship it out the Same Day.

## Notes

- *Orders for bars with changes to bar length, number of flats, or any other dimension will not qualify for Same Day Shipping.*
- *Maximum order size \$1000 to be eligible for Same Day Shipping.*
- *Same Day shipping is limited to US addresses only.*



*\*Ø5/8" and up need to be ordered by 10:30 AM central time for guaranteed Same Day shipping.*

Bar Type	
A	Steel Bar w / Coolant
C	Solid Carbide Bar
D	Heavy Metal Bar
E	Carbide Bar w / Coolant
S	Steel Bar

Bar Ø & Length		
03	3/16" Ø	4.50 OAL
04	1/4" Ø	4.50 OAL
05	5/16" Ø	4.50 OAL
06	3/8" Ø	4.75 OAL
08	1/2" Ø	5.00 OAL
10	5/8" Ø	7.00 OAL
12	3/4" Ø	7.00 OAL
16	1.0" Ø	7.00 OAL

Lead Angle	
F	0°
L	-5°
U	-3°
J	-2°

# C 1 2 - S C L C R 3

Insert Clamping	
M	MultiClamp
N	TopNotchClamp
S	ScrewDown
C	TopClamp

Insert	
C	80° Diamond
D	55° Diamond
T	60° Triangle
V	35° Diamond
W	80° Trigon

Insert Clearance Angle	
C	7°
N	0°
P	11°
O	Specific Description

Bar Cut	
L	Left Hand
R	Right Hand

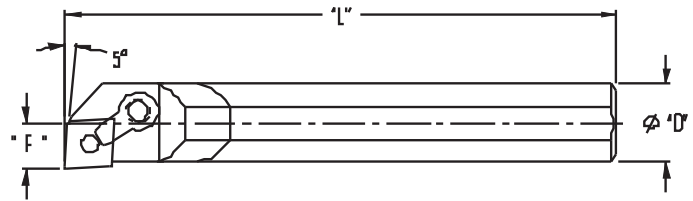
Insert Size	
1.5	.187 IC
1.8	.218 IC
2	.250
3	.375 IC
4	.500 IC

# STUBBY®

## Carbide Boring Bars

### MCLN

\*Boring & Facing  
\*Uses CNMG insert



carbide shank

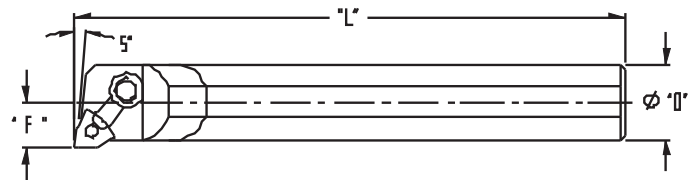
Catalog Number	Shank Dia.	L	F	Min. Bore	Clamp/Screw	Cam Screw	Insert
C16-MCLNR/L-4	1	7"	0.625	1.135	CK-20/STC-11	NL-44	CNMG-432

"R" for right hand bar  
"L" for left hand bar

"C" for solid shank  
"E" for coolant thru

### MWLN

\*Boring & Facing  
\*Uses WNMG insert



carbide shank

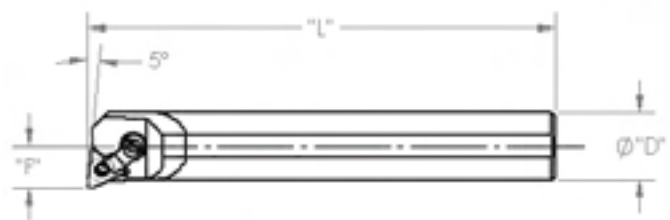
Catalog Number	Shank Dia.	L	F	Min. Bore	Clamp/Screw	Cam Screw	Insert
C10-MWLN-3	0.625	7"	0.44	0.76	CK-5/STC-5	NL-33	WNMG-322
C12-MWLN/L-3	0.75	7"	0.50	0.885	CK-6/STC-5	NL-33	WNMG-322
C12-MWLN-33	0.75	7"	0.50	0.885	CK-7/STC-9	NL-33L	WNMG-332
C16-MWLN/L-3	1	7"	0.625	1.135	CK-6/STC-5	NL-33	WNMG-322
C16-MWLN-4	1	7"	0.625	1.135	CK-20/STC-11	NL-44	WNMG-432

"R" for right hand bar  
"L" for left hand bar

"C" for solid shank  
"E" for coolant thru

### MTLN

\*Boring & Facing  
\*Uses TNGA insert



carbide shank

Catalog Number	Shank Dia.	L	F	Min. Bore	Clamp/Screw	Cam Screw	Insert
C16-MTLNR-3	1	7"	0.625	1.135	CK-7/STC-9	NL-33L	TNGA-332

"R" for right hand bar  
"L" for left hand bar

"C" for solid shank  
"E" for coolant thru

\*Heavy metal shanks available, please call for quote\*  
1-800-274-4686

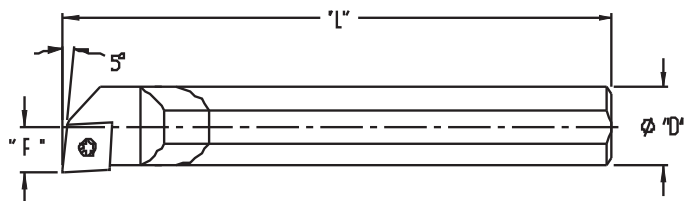


# STUBBY®

## Carbide Boring Bars

### SCLP

\*Boring & Facing  
\*Uses CPMT insert



carbide shank

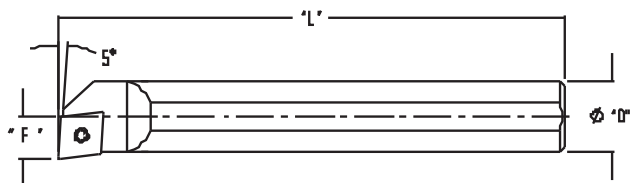
Catalog Number	Shank Dia.	L	F	Min. Bore	MS-1152	Insert
C05-SCLPR/L-1.8	0.312	4-1/2"	0.219	0.385	5513-020-03	CPMT-1.81.51
C05-SCLPR/L-2	0.312	4-1/2"	0.219	0.385	5513-020-03	CPMT-21.51
C06-SCLPR/L-2	0.375	4-3/4"	0.25	0.447	5513-020-03	CPMT-21.51
C08-SCLPR/L-2	0.5	5"	0.312	0.572	5513-020-03	CPMT-21.51
C08-SCLPR/L-3	0.5	5"	0.312	0.572	5513-020-09	CPMT-32.52
C10-SCLPR/L-2	0.625	7"	0.406	0.728	5513-020-03	CPMT-21.51
C10-SCLPR/L-3	0.625	7"	0.406	0.728	5513-020-09	CPMT-32.52
C12-SCLPR/L-3	0.75	7"	0.5	0.885	5513-020-09	CPMT-32.52
C16-SCLPR/L-3	1	7"	0.625	1.135	5513-020-09	CPMT-32.52
C16-SCLPR/L-4	1	7"	0.641	1.15	5513-020-17	CPMT-432

"C" for solid shank  
"E" for coolant thru

"R" for right hand bar  
"L" for left hand bar

### SCLC

\*Boring & Facing  
\*Uses CCMT insert



carbide shank

Catalog Number	Shank Dia.	L	F	Min. Bore	Insert Screw	Insert
C05-SCLCR/L-2	0.312	4-1/2"	0.219	0.385	5513-020-03	CCMT-21.51
C06-SCLCR/L-2	0.375	4-3/4"	0.25	0.447	5513-020-03	CCMT-21.51
C08-SCLCR/L-2	0.5	5"	0.312	0.572	5513-020-03	CCMT-21.51
C08-SCLCR/L-3	0.5	5"	0.312	0.572	5513-020-09	CCMT-32.52
C10-SCLCR/L-2	0.625	7"	0.406	0.728	5513-020-03	CCMT-21.51
C10-SCLCR/L-3	0.625	7"	0.406	0.728	5513-020-09	CCMT-32.52
C12-SCLCR/L-3	0.75	7"	0.5	0.885	5513-020-09	CCMT-32.52
C16-SCLCR/L-3	1	7"	0.625	1.135	5513-020-09	CCMT-32.52
C16-SCLCR/L-4	1	7"	0.641	1.15	5513-020-17	CCMT-432

"C" for solid shank  
"E" for coolant thru

"R" for right hand bar  
"L" for left hand bar

\*Heavy metal shanks available, please call for quote\*  
1-800-274-4686



Made in USA

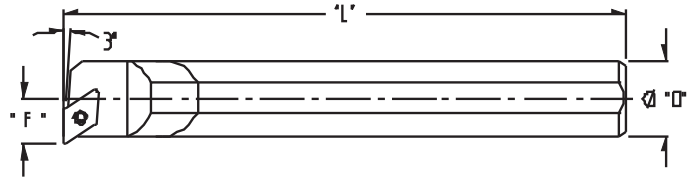


# STUBBY®

## Carbide Boring Bars

### SDUP

\*Boring & Facing  
\*Uses DPMT insert



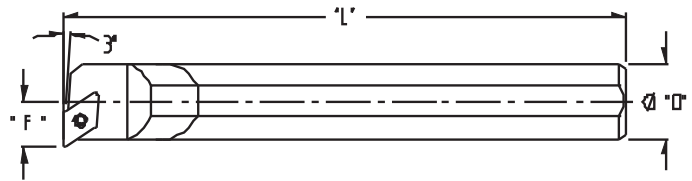
carbide shank

Catalog Number	Shank Dia.	L	F	Min. Bore	Insert Screw	Insert
C06-SDUPR/L-2	0.375	4-3/4"	0.375	0.572	MS-1153	DPMT-21.51
C08-SDUPR/L-2	0.5	5"	0.437	0.697	MS-1153	DPMT-21.51
C10-SDUPR/L-2	0.625	7"	0.5	0.822	MS-1153	DPMT-21.51
C12-SDUPR/L-3	0.75	7"	0.562	0.947	MS-1155	DPMT-32.52

↑  
↑  
"R" for right hand bar  
"L" for left hand bar  
"C" for solid shank  
"E" for coolant thru

### SDUC

\*Boring & Facing  
\*Uses DCMT insert



carbide shank

Catalog Number	Shank Dia.	L	F	Min. Bore	Insert Screw	Insert
C06-SDUCR/L-2	0.375	4-3/4"	0.375	0.572	5513-020-03	DCMT-21.51
C08-SDUCR/L-2	0.5	5"	0.437	0.697	5513-020-03	DCMT-21.51
C10-SDUCR/L-2	0.625	7"	0.5	0.822	5513-020-03	DCMT-21.51
C12-SDUCR/L-3	0.75	7"	0.625	1.01	5513-020-09	DCMT-32.52

↑  
↑  
"R" for right hand bar  
"L" for left hand bar  
"C" for solid shank  
"E" for coolant thru

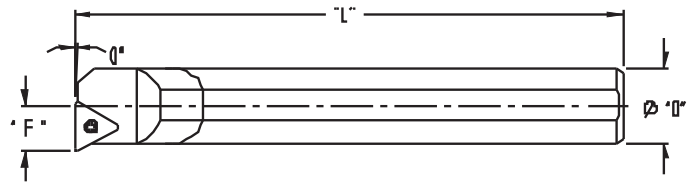
\*Heavy metal shanks available, please call for quote\*  
1-800-274-4686

# STUBBY®

## Carbide Boring Bars

### STFC

\*Boring & Facing  
\*Uses TCMT insert



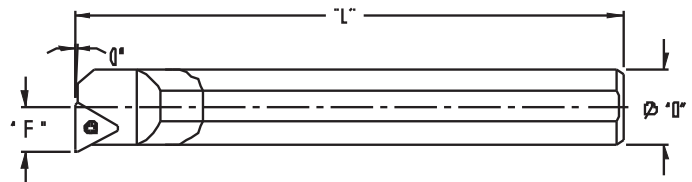
carbide shank

Catalog Number	Shank Dia.	L	F	Min. Bore	Insert Screw	Insert
C06-STFCR/L-2	0.375	4-3/4"	0.25	0.447	5513-020-03	TCMT-21.51
C08-STFCR/L-2	0.5	5"	0.312	0.572	5513-020-03	TCMT-21.51
C10-STFCR/L-2	0.625	7"	0.406	0.728	5513-020-03	TCMT-21.51
C12-STFCR/L-2	0.75	7"	0.5	0.885	5513-020-03	TCMT-21.51
C12-STFCR/L-3	0.75	7"	0.5	0.885	5513-020-09	TCMT-32.52

↑  
↑  
"R" for right hand bar  
"L" for left hand bar  
"C" for solid shank  
"E" for coolant thru

### STFP

\*Boring & Facing  
\*Uses TPMT insert



carbide shank

Catalog Number	Shank Dia.	L	F	Min. Bore	Insert Screw	Insert
C06-STFPR/L-2	0.375	4-3/4"	0.25	0.447	MS-1153	TPMT-21.51
C08-STFPR/L-2	0.5	5"	0.312	0.572	MS-1153	TPMT-21.51
C10-STFPR/L-2	0.625	7"	0.406	0.728	MS-1153	TPMT-21.51
C12-STFPR/L-3	0.75	7"	0.5	0.885	MS-1155	TPMT-32.52

↑  
↑  
"R" for right hand bar  
"L" for left hand bar  
"C" for solid shank  
"E" for coolant thru

\*Heavy metal shanks available, please call for quote\*  
1-800-274-4686



Made in USA

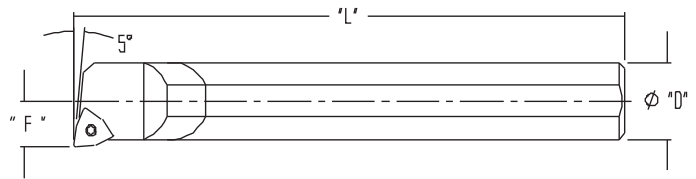


# STUBBY®

## Carbide Boring Bars

### SWLP

\*Boring & Facing  
\*Uses WPMT insert



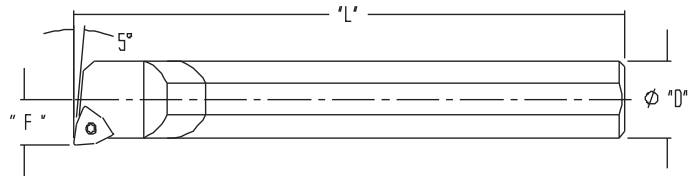
carbide shank

Catalog Number	Shank Dia.	L	F	Min. Bore	Insert Screw	Insert
C03-SWLPR/L-1.5*	0.187	4-1/2"	0.126	0.229	MS-1438	WPMT-1.51.21
C04-SWLPR/L-1.5	0.25	4-1/2"	0.156	0.291	MS-1438	WPMT-1.51.21
C05-SWLPR/L-1.5	0.312	4-1/2"	0.219	0.385	MS-1438	WPMT-1.51.21
C06-SWLPR/L-2	0.375	4-3/4"	0.25	0.447	MS-1153	WPMT-21.51
C08-SWLPR-2	0.5	5"	0.312	0.572	MS-1153	WPMT-21.51
C10-SWLPR-3	0.625	7"	0.406	0.728	MS-1155	WPMT-32.52
C12-SWLPR-3	0.75	7"	0.5	0.885	MS-1155	WPMT-32.52

↑  
↑  
"R" for right hand bar  
"L" for left hand bar  
"C" for solid shank  
"E" for coolant thru

### SWLO

\*Boring & Facing  
\*Uses WCMT insert



carbide shank

Catalog Number	Shank Dia.	L	F	Min. Bore	Insert Screw	Insert
CSWLOR 055*	0.187	4-1/2"	0.114	0.217	TS-21	WCMT 1.21
CSWLOR 065	0.25	4-1/2"	0.156	0.291	TS-2	WCMT 1.21
CSWLOR 066	0.312	4-1/2"	0.188	0.354	TS-2	WCMT 1.51.5
CSWLO504R	0.312	4-1/2"	0.203	0.369	TS-25	WCMT 21.51
CSWLOR 070	0.375	4-3/4"	0.218	0.416	TS-25	WCMT 21.51
CSWLOR 062	0.375	4-3/4"	0.25	0.447	TS-25	WCMT 21.51
CSWLOR 082	0.5	5"	0.312	0.572	TS-25	WCMT 21.51
CSWLOR 102	0.625	7"	0.375	0.697	TS-25	WCMT 21.51
CSWLOR 103	0.625	7"	0.375	0.697	TS-4	WCMT 32.52
CSWLOR 123	0.75	7"	0.5	0.885	TS-4	WCMT 32.52

↑  
"C" for solid shank  
For coolant thru add  
"C" to the end of the  
part number i.e.  
CSWLOR 123C

\*Heavy metal shanks available, please call for quote\*  
1-800-274-4686

\*Coolant thru not available

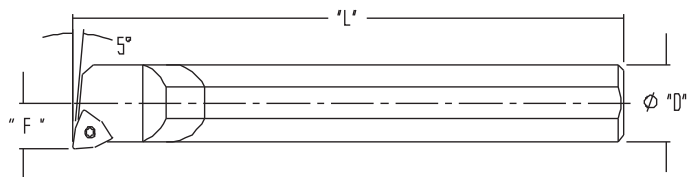
\*\*Heavy Metal not available under 3/8"

# STUBBY®

## Carbide Boring Bars

### SWLC

\*Boring & Facing  
\*Uses WCMT insert



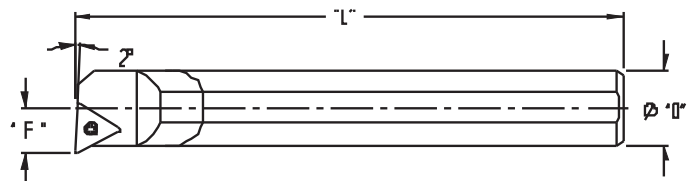
carbide shank

Catalog Number	Shank Dia.	L	F	Min. Bore	Insert Screw	Insert
C03-SWLCR-1.2*	0.187	4-1/2"	0.114	0.217	TS-21	WCMT 1.21
C04-SWLCR-1.2	0.25	4-1/2"	0.156	0.291	TS-2	WCMT 1.21
C05-SWLCR-1.5	0.312	4-1/2"	0.188	0.354	TS-2	WCMT 1.51.5
C05-SWLCR-2	0.312	4-1/2"	0.203	0.369	TS-25	WCMT 21.51
C06-SWLCR-2-218	0.375	4-3/4"	0.218	0.416	TS-25	WCMT 21.51
C06-SWLCR-2	0.375	4-3/4"	0.25	0.447	TS-25	WCMT 21.51
C08-SWLCR-2	0.5	5"	0.312	0.572	TS-25	WCMT 21.51
C10-SWLCR-2	0.625	7"	0.375	0.697	TS-25	WCMT 21.51
C10-SWLCR-3	0.625	7"	0.375	0.697	TS-4	WCMT 32.52
C12-SWLCR-3	0.75	7"	0.5	0.885	TS-4	WCMT 32.52

↑ "R" for right hand bar  
↑ "L" for left hand bar  
↑ "C" for solid shank  
↑ "E" for coolant thru

### STJO

\*Boring & Facing  
\*Uses TPGP insert



carbide shank

Catalog Number	Shank Dia.	L	F	Min. Bore	Insert Screw	Insert
CSTJOR/L 062	0.375	4-3/4"	0.25	0.447	BHF0306R	TPGP-221
CSTJOR/L 082	0.5	5"	0.312	0.572	BHF0308R	TPGP-221
CSTJOR/L 102	0.625	7"	0.375	0.697	BHF0308R	TPGP-221
CSTJOR/L 123	0.75	7"	0.5	0.885	BFTX0410A	TPGP-332

↑ "R" for right hand bar  
↑ "L" for left hand bar  
↑ "C" for solid shank  
For coolant thru add  
"C" to the end of the  
part number i.e.  
CSTJOR 123C

\*Heavy metal shanks available, please call for quote\*  
1-800-274-4686

\*Coolant thru not available

\*\*Heavy Metal not available under 3/8"



Made in USA

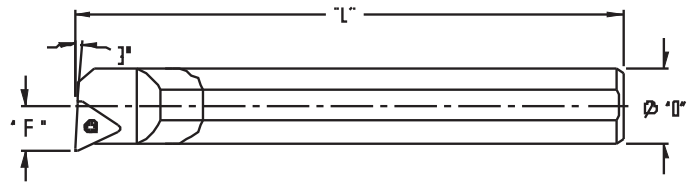


# STUBBY®

## Carbide Boring Bars

### STUP

\*Boring & Facing  
\*Uses TPMT insert



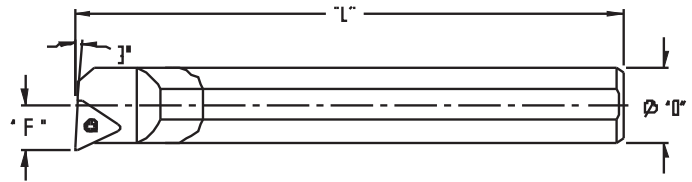
carbide shank

Catalog Number	Shank Dia.	L	F	Min. Bore	Insert Screw	Insert
C06-STUPR/L-2	0.375	4-3/4"	0.25	0.447	MS-1153	TPMT-21.51
C08-STUPR/L-2	0.5	5"	0.312	0.572	MS-1153	TPMT-21.51
C10-STUPR/L-2	0.625	7"	0.406	0.728	MS-1153	TPMT-21.51
C12-STUPR/L-3	0.75	7"	0.5	0.885	MS-1155	TPMT-32.51
C16-STUPR-3	1	7"	0.625	1.135	MS-1155	TPMT-32.52

↑  
↑  
"R" for right hand bar  
"L" for left hand bar  
"C" for solid shank  
"E" for coolant thru

### STUC

\*Boring & Facing  
\*Uses TCMT insert



carbide shank

Catalog Number	Shank Dia.	L	F	Min. Bore	Insert Screw	Insert
C06-STUCR/L-2	0.375	4-3/4"	0.25	0.447	5513-020-03	TCMT-21.51
C08-STUCR/L-2	0.5	5"	0.312	0.572	5513-020-03	TCMT-21.51
C10-STUCR/L-2	0.625	7"	0.406	0.728	5513-020-03	TCMT-21.51
C10-STUCR/L-3	0.625	7"	0.406	0.728	5513-020-09	TCMT-32.51
C12-STUCR/L-2	0.75	7"	0.5	0.885	5513-020-03	TCMT-21.51
C12-STUCR/L-3	0.75	7"	0.5	0.885	5513-020-09	TCMT-32.52
C16-STUCR-3	1	7"	0.625	1.135	5513-020-09	TCMT 32.52

↑  
↑  
"R" for right hand bar  
"L" for left hand bar  
"C" for solid shank  
"E" for coolant thru

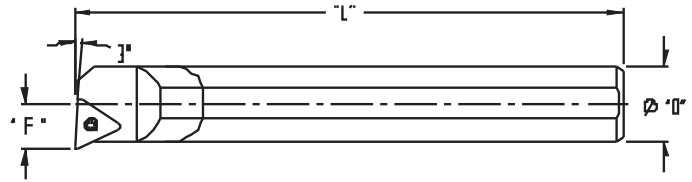
\*Heavy metal shanks available, please call for quote\*  
1-800-274-4686

# STUBBY®

## Carbide Boring Bars

### STUN

\*Boring & Facing  
\*Uses T insert



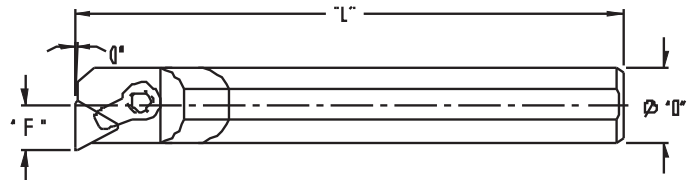
carbide shank

Catalog Number	Shank Dia.	L	F	Min. Bore	Insert Screw	Insert
C06-STUNR/L-2	0.375	4-3/4"	0.25	0.447	S-930	T-221P
C08-STUNR/L-2	0.5	5"	0.312	0.572	S-930	T-221P
C10-STUNR/L-2	0.625	7"	0.406	0.728	S-930	T-221P
C12-STUNR/L-3	0.75	7"	0.5	0.885	S-944	T-321P
C16-STUNR/L-3	1	7"	0.625	1.135	S-944	T-321P

↑ "R" for right hand bar  
↑ "L" for left hand bar  
↑ "C" for solid shank  
↑ "E" for coolant thru

### CTFP

\*Boring & Facing  
\*Uses TPG insert



carbide shank

Catalog Number	Shank Dia.	L	F	Min. Bore	Clamp/Screw	Insert
C08-CTFPR/L-2	0.5	5"	0.312	0.572	CK-27 / STC-27	TPG-221
C10-CTFPR/L-2	0.625	7"	0.406	0.728	CK-19 / STC-9	TPG-221
C12-CTFPR/L-3	0.75	7"	0.5	0.885	CK-7 / STC-9	TPG-322
C16-CTFPR/L-3	1	7"	0.625	1.135	CK-20 / STC-11	TPG-322

↑ "R" for right hand bar  
↑ "L" for left hand bar  
↑ "C" for solid shank  
↑ "E" for coolant thru

\*Uses Separate Chip Breakers\*

\*Heavy metal shanks available, please call for quote\*  
1-800-274-4686



Made in USA

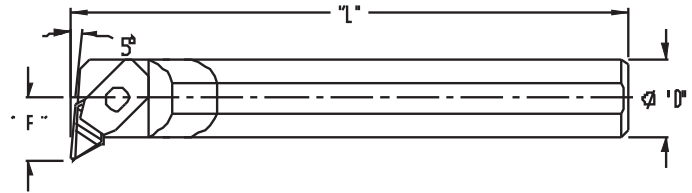


# STUBBY®

## Carbide Boring Bars

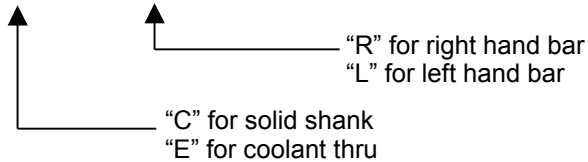
### NELR/NELL

\*PROFILE  
\*Uses NPGR insert



carbide shank

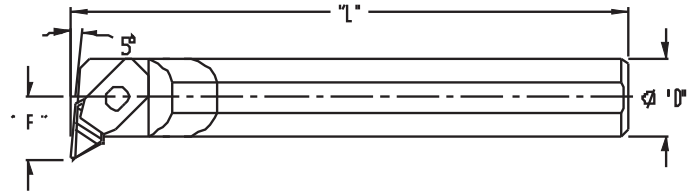
Catalog Number	Shank Dia.	L	F	Min. Bore	Clamp/Screw	Insert
C08-NELL05	0.5	5"	0.375	0.67	CM-105 / S-518	NPGR-51R
C08-NELR05	0.5	5"	0.375	0.67	CM-106 / S-518	NPGR-51L
C10-NELL05	0.625	7"	0.5	0.87	CM-71 / S-524	NPGR-51R
C10-NELR05	0.625	7"	0.5	0.87	CM-79 / S-524	NPGR-51L
C12-NELL05	0.75	7"	0.562	1	CM-68 / S-524	NPGR-51R
C12-NELR05	0.75	7"	0.562	1	CM-68 / S-524	NPGR-51L



\*Left Hand Bars use SM-285 Shim/S-959 Screw  
\*Right Hand Bars use SM-286 Shim/S-959 Screw

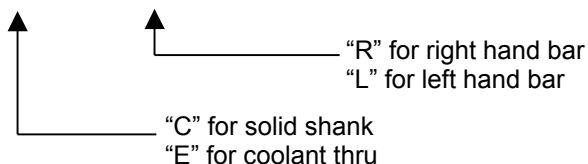
### NKLC

\*PROFIL  
\*Uses NPGR insert



carbide shank

Catalog Number	Shank Dia.	L	F	Min. Bore	Clamp/Screw	Insert
C08-NKLCL05	0.5	5"	0.375	0.67	CM-105 / S-518	NPGR-51R
C08-NKLCR05	0.5	5"	0.375	0.67	CM-106 / S-518	NPGR-51L
C10-NKLCL05	0.625	7"	0.5	0.87	CM-71 / S-524	NPGR-51R
C10-NKLCR05	625	7"	0.5	0.87	CM-79 / S-524	NPGR-51L
C12-NKLCL05	0.75	7"	0.562	1	CM-68 / S-524	NPGR-51R
C12-NKLCR05	0.75	7"	0.562	1	CM-68 / S-524	NPGR-51L



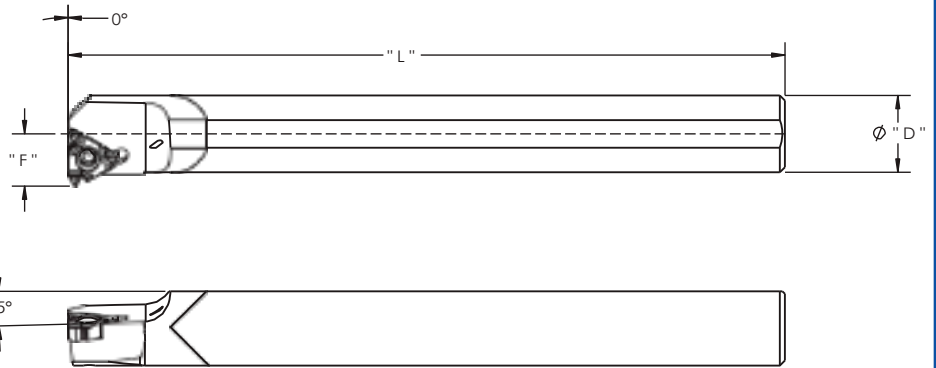
\*Left Hand Bars use SM-285 Shim/S-959 Screw  
\*Right Hand Bars use SM-286 Shim/S-959 Screw

\*Heavy metal shanks available, please call for quote\*  
1-800-274-4686



# STUBBY®

## Carbide Thread Bars



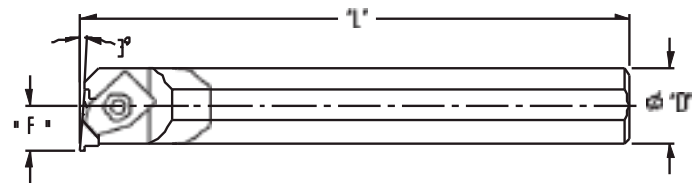
**LSER**  
Laydown Thread  
\*Uses LT16 insert

carbide shank

Catalog Number	Shank Dia.	L	F	Min. Bore	Insert Screw	Insert
C08-LSER-3	0.5	5"	0.39	0.65	MS-1155	LT16
C10-LSER-3	0.625	7"	0.439	0.761	MS-1155	LT16
C12-LSER-3	0.75	7"	0.51	0.895	MS-1155	LT16

↑  
"C" for solid shank  
"E" for coolant thru

**NER/NEL**  
\*Thread & Groove  
\*Uses NG insert



carbide shank

Catalog Number	Shank Dia.	L	F	Min. Bore	Clamp/Screw	Insert
C08-NEL2	0.5	5"	0.437	0.697	CM146/SC-110	NG-2R
C08-NER2	0.5	5"	0.437	0.697	CM147/SC-110	NG-2L
C10-NEL2	0.625	7"	0.5	0.822	CM-74/S-310	NG-2R
C10-NER2	0.625	7"	0.5	0.822	CM-75/S-310	NG-2L
C12-NEL2	0.75	7"	0.562	0.947	CM-74/S-310	NG-2R
C12-NER2	0.75	7"	0.562	0.947	CM-75/S-310	NG-2L

↑ ↑  
"R" for right hand bar  
"L" for left hand bar  
"C" for solid shank  
"E" for coolant thru

\*Heavy metal shanks available, please call for quote\*  
1-800-274-4686



Made in USA

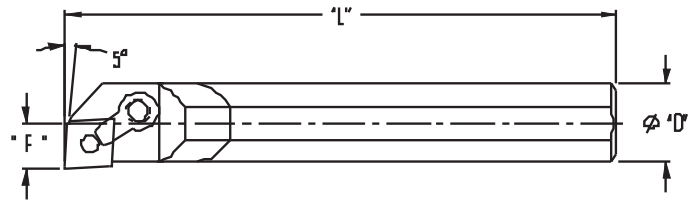


# STUBBY®

## Steel Boring Bars

### MCLN

\*Boring & Facing  
\*Uses CNMG insert



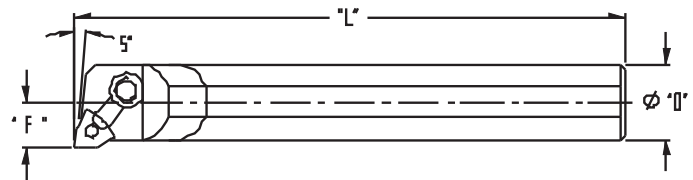
steel shank

Catalog Number	Shank Dia.	L	F	Min. Bore	Clamp/Screw	Cam Screw	Insert
S16-MCLNR/L-4	1	7"	0.625	1.135	CK-20/STC-11	NL-44	CNMG-432

↑ "R" for right hand bar  
↑ "L" for left hand bar  
↑ "S" for solid shank  
↑ "A" for coolant thru

### MWLN

\*Boring & Facing  
\*Uses WNMG insert



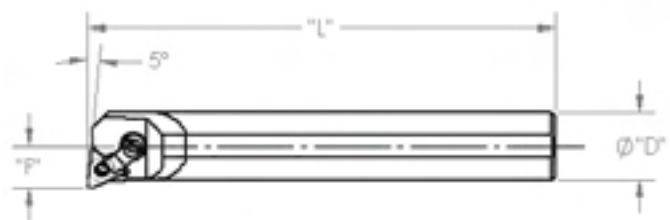
steel shank

Catalog Number	Shank Dia.	L	F	Min. Bore	Clamp/Screw	Cam Screw	Insert
S10-MWLN-3	0.625	7"	0.44	0.76	CK-7/STC-9	NL-33	WNMG-322
S12-MWLN/L-3	0.75	7"	0.50	0.885	CK-7/STC-9	NL-33	WNMG-322
S12-MWLN-33	0.75	7"	0.50	0.885	CK-7/STC-9	NL-33	WNMG-332
S16-MWLN/L-3	1	7"	0.625	1.135	CK-7/STC-9	NL-33	WNMG-322
S16-MWLN-4	1	7"	0.625	1.135	CK-20/STC-11	NL-44	WNMG-432

↑ "R" for right hand bar  
↑ "L" for left hand bar  
↑ "S" for solid shank  
↑ "A" for coolant thru

### MTLN

\*Boring & Facing  
\*Uses TNGA insert



steel shank

Catalog Number	Shank Dia.	L	F	Min. Bore	Clamp/Screw	Cam Screw	Insert
S16-MTLNR-3	1	7"	0.625	1.135	CK-7/STC-9	NL-33	TNGA-332

↑ "R" for right hand bar  
↑ "L" for left hand bar  
↑ "S" for solid shank  
↑ "A" for coolant thru

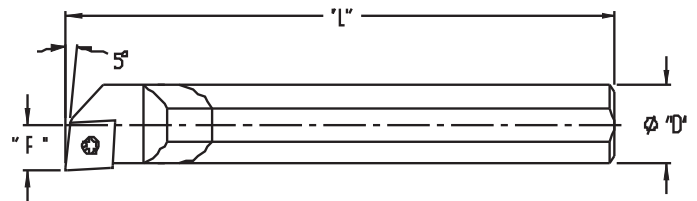
\*Heavy metal shanks available, please call for quote\*  
1-800-274-4686

# STUBBY®

## Steel Boring Bars

### SCLP

\*Boring & Facing  
\*Uses CPMT insert



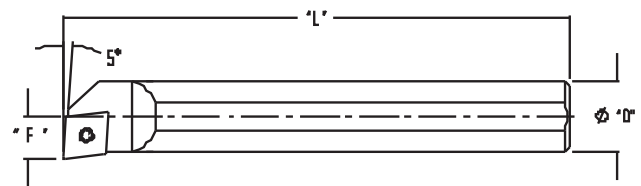
steel shank

Catalog Number	Shank Dia.	L	F	Min. Bore	Insert Screw	Insert
S05-SCLPR/L-1.8	0.312	4-1/2"	0.219	0.385	MS-1152	CPMT-1.81.51
S05-SCLP/LR-2	0.312	4-1/2"	0.219	0.385	MS-1153	CPMT-21.51
S06-SCLPR/L-2	0.375	4-3/4"	0.25	0.447	MS-1153	CPMT-21.51
S08-SCLPR/L-2	0.5	5"	0.312	0.572	MS-1153	CPMT-21.51
S08-SCLPR/L-3	0.5	5"	0.312	0.572	MS-1155	CPMT-32.52
S10-SCLPR/L-2	0.625	7"	0.406	0.728	MS-1153	CPMT-21.51
S10-SCLPR/L-3	0.625	7"	0.406	0.728	MS-1155	CPMT-32.52
S12-SCLPR/L-3	0.75	7"	0.5	0.885	MS-1155	CPMT-32.52

↑ "R" for right hand bar  
↑ "L" for left hand bar  
↑ "S" for solid shank  
↑ "A" for coolant thru

### SCLC

\*Boring & Facing  
\*Uses CCMT insert



steel shank

Catalog Number	Shank Dia.	L	F	Min. Bore	Insert Screw	Insert
S05-SCLCR/L-2	0.312	4-1/2"	0.219	0.385	5513-020-03	CCMT-21.51
S06-SCLCR/L-2	0.375	4-3/4"	0.25	0.447	5513-020-03	CCMT-21.51
S08-SCLCR/L-2	0.5	5"	0.312	0.572	5513-020-03	CCMT-21.51
S08-SCLCR/L-3	0.5	5"	0.312	0.572	5513-020-09	CCMT-32.52
S10-SCLCR/L-2	0.625	7"	0.406	0.728	5513-020-03	CCMT-21.51
S10-SCLCR/L-3	0.625	7"	0.406	0.728	5513-020-09	CCMT-32.52
S12-SCLCR/L-3	0.75	7"	0.5	0.885	5513-020-09	CCMT-32.52
S16-SCLCR/L-3	1	7"	0.625	1.15	5513-020-09	CCMT-32.52
S16-SCLCR/L-4	1	7"	0.625	1.15	5513-020-17	CCMT-432

↑ "R" for right hand bar  
↑ "L" for left hand bar  
↑ "S" for solid shank  
↑ "A" for coolant thru

\*Heavy metal shanks available, please call for quote\*  
1-800-274-4686



Made in USA

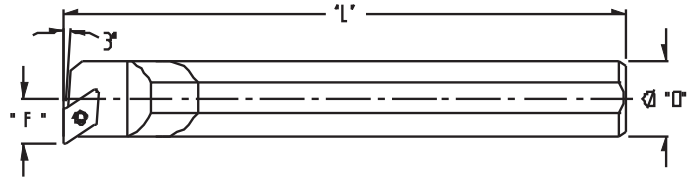


# STUBBY®

## Steel Boring Bars

### SDUP

\*Boring & Facing  
\*Uses DPMT insert



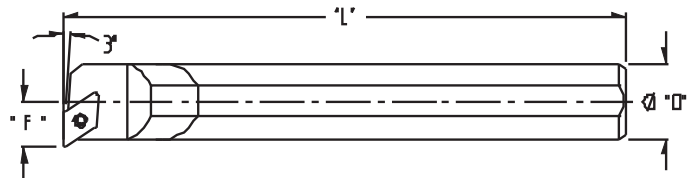
steel shank

Catalog Number	Shank Dia.	L	F	Min. Bore	Insert Screw	Insert
S06-SDUPR/L-2	0.375	4-3/4"	0.375	0.572	MS-1153	DPMT-21.51
S08-SDUPR/L-2	0.5	5"	0.437	0.697	MS-1153	DPMT-21.51
S10-SDUPR/L-2	0.625	7"	0.5	0.822	MS-1153	DPMT-21.51
S12-SDUPR/L-3	0.75	7"	0.562	0.947	MS-1155	DPMT-32.52

↑  
↑  
"R" for right hand bar  
"L" for left hand bar  
"S" for solid shank  
"A" for coolant thru

### SDUC

\*Boring & Facing  
\*Uses DCMT insert



steel shank

Catalog Number	Shank Dia.	L	F	Min. Bore	Insert Screw	Insert
S06-SDUCR/L-2	0.375	4-3/4"	0.375	0.572	5513-020-03	DCMT-21.51
S08-SDUCR/L-2	0.5	5"	0.437	0.697	5513-020-03	DCMT-21.51
S10-SDUCR/L-2	0.625	7"	0.5	0.822	5513-020-03	DCMT-21.51
S12-SDUCR/L-3	0.75	7"	0.625	1.01	5513-020-09	DCMT-32.52

↑  
↑  
"R" for right hand bar  
"L" for left hand bar  
"S" for solid shank  
"A" for coolant thru

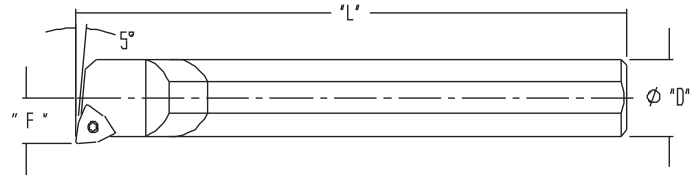
\*Heavy metal shanks available, please call for quote\*  
1-800-274-4686

# STUBBY®

## Steel Boring Bars

### SWLP

\*Boring & Facing  
\*Uses WPMT insert



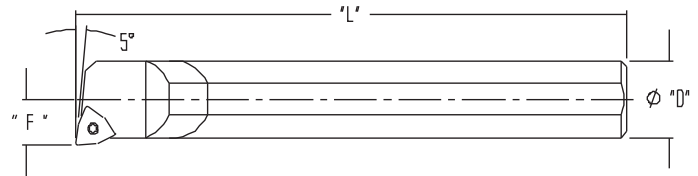
steel shank

Catalog Number	Shank Dia.	L	F	Min. Bore	Insert Screw	Insert
S06-SWLPR/L-2	0.375	4-3/4"	0.25	0.447	MS-1153	WPMT-21.51
S08-SWLPR/L-2	0.5	5"	0.312	0.572	MS-1153	WPMT-21.51
S10-SWLPR/L-3	0.625	7"	0.406	0.728	MS-1155	WPMT-32.52
S12-SWLPR/L-3	0.75	7"	0.5	0.885	MS-1155	WPMT-32.52

↑  
↑  
"R" for right hand bar  
"L" for left hand bar  
"S" for solid shank  
"A" for coolant thru

### SWLO

\*Boring & Facing  
\*Uses WCMT insert



steel shank

Catalog Number	Shank Dia.	L	F	Min. Bore	Insert Screw	Insert
S-SWLOR 070	0.375	4-3/4"	0.218	0.416	TS-25	WCMT 21.51
S-SWLOR 062	0.375	4-3/4"	0.25	0.447	TS-25	WCMT 21.51
S-SWLOR 082	0.5	5"	0.312	0.572	TS-25	WCMT 21.51
S-SWLOR 102	0.625	7"	0.375	0.697	TS-25	WCMT 21.51
S-SWLOR 103	0.625	7"	0.375	0.697	TS-4	WCMT 32.52
S-SWLOR 123	0.75	7"	0.5	0.885	TS-4	WCMT 32.52

↑  
"S" for solid shank  
For coolant thru add  
"C" to the end of the  
part number i.e.  
S-SWLOR 123C

\*Heavy metal shanks available, please call for quote\*  
1-800-274-4686

\*Coolant thru not available

\*\*Heavy Metal not available under 3/8"



Made in USA

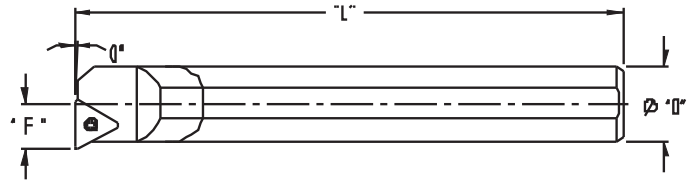


# STUBBY®

## Steel Boring Bars

### STFC

\*Boring & Facing  
\*Uses TCMT insert



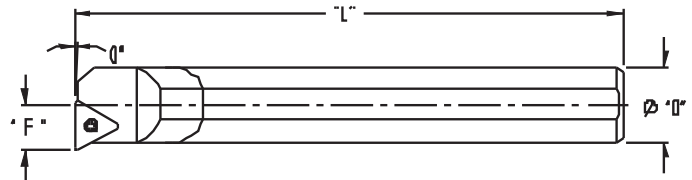
steel shank

Catalog Number	Shank Dia.	L	F	Min. Bore	Insert Screw	Insert
S06-STFCR/L-2	0.375	4-3/4"	0.25	0.447	5513-020-03	TCMT-21.51
S08-STFCR/L-2	0.5	5"	0.312	0.572	5513-020-03	TCMT-21.51
S10-STFCR/L-2	0.625	7"	0.406	0.728	5513-020-03	TCMT-21.51
S12-STFCR/L-2	0.75	7"	0.5	0.885	5513-020-03	TCMT-21.51
S12-STFCR/L-3	0.75	7"	0.5	0.885	5513-020-09	TCMT-32.52

↑ "R" for right hand bar  
↑ "L" for left hand bar  
↑ "S" for solid shank  
↑ "A" for coolant thru

### STFP

\*Boring & Facing  
\*Uses TPMT insert



steel shank

Catalog Number	Shank Dia.	L	F	Min. Bore	Insert Screw	Insert
S06-STFPR/L-2	0.375	4-3/4"	0.25	0.447	MS-1153	TPMT-21.51
S08-STFPR/L-2	0.5	5"	0.312	0.572	MS-1153	TPMT-21.51
S10-STFPR/L-2	0.625	7"	0.406	0.728	MS-1153	TPMT-21.51
S12-STFPR/L-3	0.75	7"	0.5	0.885	MS-1155	TPMT-32.52

↑ "R" for right hand bar  
↑ "L" for left hand bar  
↑ "S" for solid shank  
↑ "A" for coolant thru

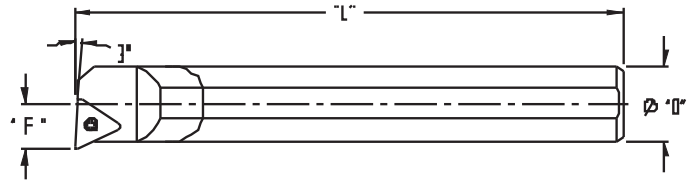
\*Heavy metal shanks available, please call for quote\*  
1-800-274-4686

# STUBBY®

## Steel Boring Bars

### STUP

\*Boring & Facing  
\*Uses TPMT insert



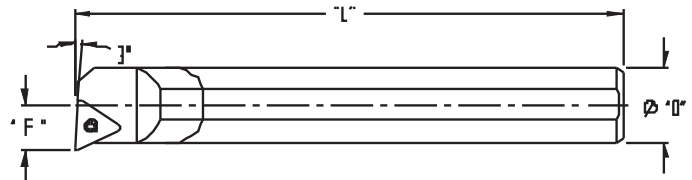
steel shank

Catalog Number	Shank Dia.	L	F	Min. Bore	Insert Screw	Insert
S06-STUPR/L-2	0.375	4-3/4"	0.25	0.447	MS-1153	TPMT-21.51
S08-STUPR/L-2	0.5	5"	0.312	0.572	MS-1153	TPMT-21.51
S10-STUPR/L-2	0.625	7"	0.406	0.728	MS-1153	TPMT-21.51
S12-STUPR/L-3	0.75	7"	0.5	0.885	MS-1155	TPMT-32.52
S16-STUPR/L-3	1	7"	0.625	1.135	MS-1155	TPMT-32.52

↑ "R" for right hand bar  
↑ "L" for left hand bar  
↑ "S" for solid shank  
↑ "A" for coolant thru

### STUC

\*Boring & Facing  
\*Uses TCMT insert



steel shank

Catalog Number	Shank Dia.	L	F	Min. Bore	Insert Screw	Insert
S06-STUCR/L-2	0.375	4-3/4"	0.25	0.447	5513-020-03	TCMT-21.51
S08-STUCR/L-2	0.5	5"	0.312	0.572	5513-020-03	TCMT-21.51
S10-STUCR/L-2	0.625	7"	0.406	0.728	5513-020-03	TCMT-21.51
S12-STUCR/L-2	0.75	7"	0.5	0.885	5513-020-03	TCMT-21.51
S12-STUCR/L-3	0.75	7"	0.5	0.885	5513-020-09	TCMT-32.52
S16-STUCR-3	1	7"	0.625	1.135	5513-020-09	TCMT-32.52
S10-STUCR/L-3	0.625	7"	0.406	0.728	5513-020-09	TCMT-32.52

↑ "R" for right hand bar  
↑ "L" for left hand bar  
↑ "S" for solid shank  
↑ "A" for coolant thru

\*Heavy metal shanks available, please call for quote\*  
1-800-274-4686



Made in USA

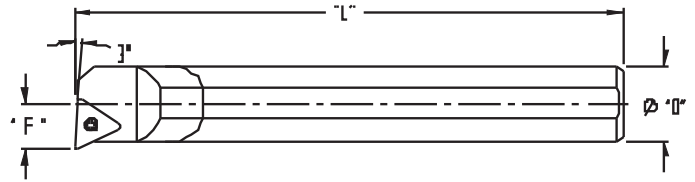


# STUBBY®

## Steel Boring Bars

### STUN

\*Boring & Facing  
\*Uses T insert



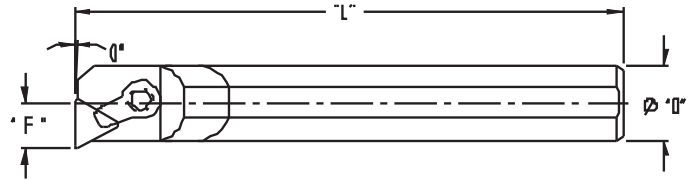
steel shank

Catalog Number	Shank Dia.	L	F	Min. Bore	Insert Screw	Insert
S06-STUNR/L-2	0.375	4-3/4"	0.25	0.447	S-930	T-221P
S08-STUNR/L-2	0.5	5"	0.312	0.572	S-930	T-221P
S10-STUNR/L-2	0.625	7"	0.406	0.728	S-930	T-221P
S12-STUNR/L-3	0.75	7"	0.5	0.885	S-944	T-321P
S16-STUNR/L-3	1	7"	0.625	1.135	S-944	T-321P

↑ "R" for right hand bar  
↑ "L" for left hand bar  
↑ "S" for solid shank  
↑ "A" for coolant thru

### CTFP

\*Boring & Facing  
\*Uses TPG insert



steel shank

Catalog Number	Shank Dia.	L	F	Min. Bore	Clamp/Screw	Insert
S08-CTFPR/L-2	0.5	5"	0.312	0.572	CK-27 / STC-27	TPG-221
S10-CTFPR/L-2	0.625	7"	0.406	0.728	CK-19 / STC-9	TPG-221
S12-CTFPR/L-3	0.75	7"	0.5	0.885	CK-7 / STC-9	TPG-322
S16-CTFPR/L-3	1	7"	0.625	1.135	CK-20 / STC-11	TPG-322

↑ "R" for right hand bar  
↑ "L" for left hand bar  
↑ "S" for solid shank  
↑ "A" for coolant thru

\*Uses Separate Chip Breaker\*

\*Heavy metal shanks available, please call for quote\*  
1-800-274-4686

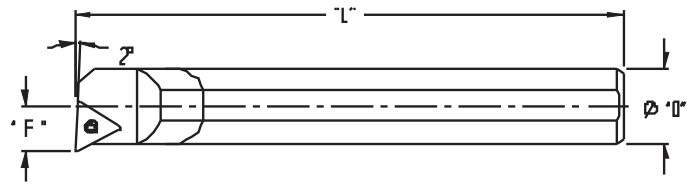


# STUBBY®

## Steel Boring Bars

### STJO

\*Boring & Facing  
\*Uses TPGP insert



steel shank

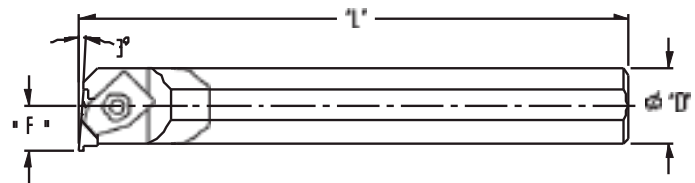
Catalog Number	Shank Dia.	L	F	Min. Bore	Insert Screw	Insert
S-STJOR/L 062	0.375	4-3/4"	0.25	0.447	BHF0306R	TPGP-220
S-STJOR/L 082	0.5	5"	0.312	0.572	BHF0308R	TPGP-220
S-STJOR/L 102	0.625	7"	0.375	0.697	BHF0308R	TPGP-220
S-STJOR/L 123	0.75	7"	0.5	0.885	BFTX0410A	TPGP-330

↑ "R" for right hand bar  
↑ "L" for left hand bar

↑ "S" for solid shank  
For coolant thru add  
"C" to the end of the  
part number i.e.  
S-STJOR 123C

### NER/NEL

\*Thread & Groove  
\*Uses NG insert



steel shank

Catalog Number	Shank Dia.	L	F	Min. Bore	Clamp/Screw	Insert
S08-NEL2	0.5	5"	0.437	0.697	CM-146/SC-110	NG-2R
S10-NEL2	0.625	7"	0.5	0.822	CM-146/S-310	NG-2R
S12-NEL2	0.75	7"	0.562	0.947	CM-146/S-310	NG-2R
S08-NER2	0.5	5"	0.437	0.697	CM-147/S-310	NG-2L
S10-NER2	0.625	7"	0.5	0.822	CM-147/S-310	NG-2L
S12-NER2	0.75	7"	0.562	0.947	CM-147/S-310	NG-2L

↑ "R" for right hand bar  
↑ "L" for left hand bar

↑ "S" for solid shank  
"A" for coolant thru

\*Heavy metal shanks available, please call for quote\*  
1-800-274-4686



Made in USA

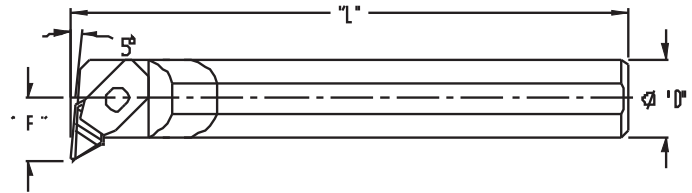


# STUBBY®

## Steel Boring Bars

### NELL

\*PROFILE  
\*Uses NPGR insert



steel shank

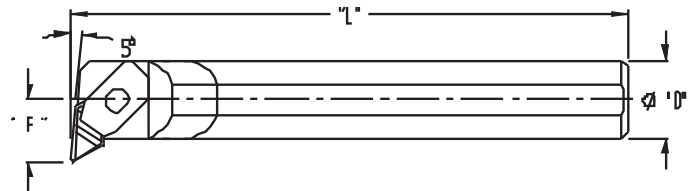
Catalog Number	Shank Dia.	L	F	Min. Bore	Clamp/Screw	Insert
S08-NELL05	0.5	5"	0.375	0.67	CM-105 / S-518	NPGR-51R
S10-NELL05	0.625	7"	0.5	0.87	CM-71 / S-524	NPGR-51R
S12-NELL05	0.75	7"	0.562	1	CM-68 / S-524	NPGR-51R
S08-NELR05	0.5	5"	0.375	0.67	CM-106 / S-518	NPGR-51L
S10-NELR05	0.625	7"	0.5	0.87	CM-79 / S-524	NPGR-51L
S12-NELR05	0.75	7"	0.562	1	CM-68 / S-524	NPGR-51L

↑ "R" for right hand bar  
↑ "L" for left hand bar  
↑ "S" for solid shank  
↑ "A" for coolant thru

\*Left Hand Bars use SM-285 Shim/S-959 Screw  
\*Right Hand Bars use SM-286 Shim/S-959 Screw

### NKLC

\*PROFIL  
\*Uses NPGR insert



steel shank

Catalog Number	Shank Dia.	L	F	Min. Bore	Clamp/Screw	Insert
S08-NKLCL05	0.5	5"	0.375	0.67	CM-105 / S-518	NPGR-51R
S10-NKLCL05	0.625	7"	0.5	0.87	CM-71 / S-524	NPGR-51R
S12-NKLCL05	0.75	7"	0.562	1	CM-68 / S-524	NPGR-51R
S08-NKLCL05	0.5	5"	0.375	0.67	CM-106 / S-518	NPGR-51L
S10-NKLCL05	625	7"	0.5	0.87	CM-79 / S-524	NPGR-51L
S12-NKLCL05	0.75	7"	0.562	1	CM-68 / S-524	NPGR-51L

↑ "R" for right hand bar  
↑ "L" for left hand bar  
↑ "S" for solid shank  
↑ "A" for coolant thru

\*Left Hand Bars use SM-285 Shim/S-959 Screw  
\*Right Hand Bars use SM-286 Shim/S-959 Screw

\*Heavy metal shanks available, please call for quote\*  
1-800-274-4686



*Cindy Blue and Barb Dorumsgaard  
Operators and Owners*

*Family Owned and Operated since 1976, NTM Inc.  
has been proudly supplying quality products and services  
made in the USA for over 40 years.*

## **Vision Statement**

**HELPING MANUFACTURERS SUCCEED**

## **Mission Statement**

**NTM PROVIDES THE FINEST CUTTING TOOLS, SERVICES  
AND MACHINED PRODUCTS FOR OUR CUSTOMERS**

## **Core Values**

- DEDICATION
- INNOVATION
- LOYALTY
- POSITIVITY
- INTEGRITY



**Made in USA**

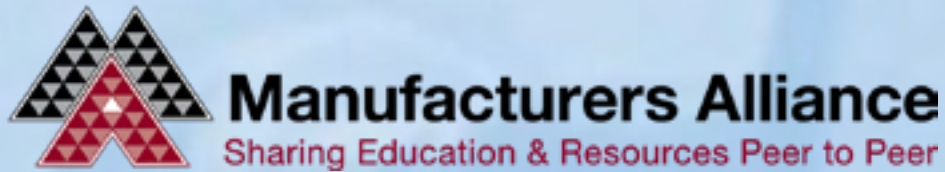


ISO 9001:2015 Certified  
Quality Management System





## Proud Members of the Following Associations



## NTM Proudly Certified with the following organizations:

