

PRODUCT CATALOGUE

2026

 sales.my@sektor.co

 03 7863 9033


 No 12A, Jalan 51/225A,
PJCT Corporate Hub,
46100 Petaling Jaya,
Selangor, Malaysia

TABLE OF CONTENTS

Acer	01	Avigilon Ava	02
Bixolon	03	Cipherlab	04
Element	05	Elo	06
Epson	07	HiStone	08
Honeywell	09	HP	10
HPRT	11	Matica	12
VPOS	13	Zebra Technologies	14
42 Gears	15	BarTender	16
Ivanti	17	SOTI	18



Veriton VX2720

- Intel® Core™ G7400 / i3-14100 / i5 14400
- 8GB DDR5; 256GB/512GB M.2 PCIE SSD
- 802.11ax/ac/a/b/g/n, Wi-Fi 6E and Bluetooth® 5
- 300W PFC, auto-sensing, 80PLUS Bronze, TFX Power Supply

POS PC



V206HQL LED BLACK

- 19.5" (16:9) Acer ComfyView display with Acer eColor technology
- Resolution: HD (1366 x 768 pixel) Display
- 100 million:1 contrast ratio (ACM)
- Extensive connectivity: VGA and HDMI



21.5" EK1 Monitor - EK221Q

- 21.5" IPS Display with a FHD (1920x1080) resolution
- 100 million:1 contrast ratio (ACM)
- Extensive connectivity: HDMI and VGA
- AMD FreeSync technology



24" EK241Y LCD Monitor

- 23.8" (16:9) VA Panel with Acer ComfyView
- Full HD (1920 x 1080) resolution
- AMD FreeSync™ technology
- 100 million:1 contrast ratio (ACM)
- Extensive connectivity: HDMI and VGA

DIGITAL DISPLAY

Simple, smart security

Cloud-native video security



Ava Compact Dome White-5MP

Dome Indoor Camera, 5MP image sensor ,f/1.3, 3.2mm focal length, 102° Horizontal & 71° Vertical field of view, Automatic night mode

Ava Aware Cloud® License 1 year

.....



Ava Dome White- 5MP

Dome Indoor Camera, 5MP image sensor ,f/1.3, 3.2mm focal length, 102° Horizontal & 71° Vertical field of view, Automatic night mode

Ava Aware Cloud® License 1 year

Suitable for Commercial, Education, Healthcare, Retail, Hospitality, and Municipality.



Simple, smart security

Cloud-native video security



Ava Bullet Wide White- 5MP

Bullet Outdoor Camera, 5MP image sensor, f/1.38-f/2.8, 4.3-10.8mm focal length, Field of view (wide) 100°-40° Horizontal 53°-23° Vertical, Automatic night mode

Ava Aware Cloud® License 1 year



Build from existing investment and retain privacy



Have an overview of your operational insights



Save storage and money



Simplicity and compliance

A person in a dark blue shirt is pointing at a computer monitor. The monitor displays a software interface with a video feed of three people and a floor plan with camera locations.

CAMERAS - BULLET



INDUSTRIAL PRINTER



XT3-40

- 4" Industrial Label Printer, Wired/Wireless
- Peeler, Auto Cutter, Rewinder with Peeler
- 2.4" Full-Colour LCD Display
- Intuitive Button Control
- Suitable for Warehouse & Manufacturing, Transportation & Logistic, Healthcare, and Retail

XT5-40

- Industrial Label Printer, Wired/Wireless
- Award-Winning, Robust & Affordable Design
- Up to 300 dpi Resolution Options
- 3.5" Full-Colour LCD Display
- Easy Device Management Tools
- Suitable for Warehouse & Manufacturing, Transportation & Logistic, and Government





RECEIPT PRINTERS



SRP-330IIICOESK

- 3" Thermal, Black, Ethernet, Serial, USB
- Auto Cutter
- Suitable for Retail, Restaurants & Bars, Ticketing, and Kiosk



SRP-275IIIAOPG

- 3" Impact Dot, Black, Parallel, USB
- Manual Cutter
- Suitable for Retail, Hospitality Kitchen, Front of House, and Food Court



SRP-275IIICOESG

- 3" Impact Dot, Black, Serial, Ethernet, USB
- Auto Cutter
- Suitable for Retail, Hospitality Kitchen, Front of House, and Food Court



MOBILE RECEIPT PRINTER



SPP-C200

- 2" Mobile Receipt Printer
- Ultra-Compact and Lightweight Design
- Print Speed Up to 80 mm/sec at 203 dpi
- Reliable Receipt Printing Performance
- Competitive and Cost-Effective Solution
- Suitable for Retail, Hospitality, and Mobile Workforce Applications



SPP-C300

- 3" (80 mm) Mobile Receipt Printer
- Compact and Lightweight User-Friendly Design
- Smaller and Lighter than Previous Models
- Optimized for On-the-Go Receipt Printing
- Reduces Worker Fatigue and Improves Productivity
- Ideal for Retail, Hospitality, Transportation & Logistics, and Field Service Applications



MOBILE RECEIPT PRINTER

SPP-R200III



- 2" (58 mm) Direct Thermal Mobile Receipt Printer
- Fast Print Speed for Efficient On-the-Go Operations
- Ruggedised and Durable Housing for Demanding Environments
- Enhanced Media Capacity Compared to Standard 2" Printers
- Supports NFC for Easy Bluetooth Pairing and Connectivity
- Ideal for Retail, Field Service, Logistics, and Mobile Workforce Applications

SPP-R310



- 3" (80 mm) Direct Thermal Mobile Receipt Printer
- Built on BIXOLON's Proven Mobile Printing Performance
- Supports Media Width up to 80 mm
- Durable and Rugged Design for Field Mobility Applications
- High-Performance Feature Set for Demanding Environments
- Reliable Mobile Printing for Retail, Logistics, Transportation, and Field Service Use

SPP-R410



- 4" (112 mm) Mobile Receipt and Ticket Printer
- Widest Mobile Printer in the BIXOLON Range
- Consistent Design and User Experience Across 2", 3", and 4" Models
- Easy Bluetooth Pairing™ for Fast and Simple Connectivity
- Durable and Reliable for Demanding Field Applications
- Ideal for Ticketing, Logistics, Transportation, and Field Mobility Use



MOBILE LABEL PRINTER



SPP-L310

- 3" (80 mm) Mobile Label Printer with Ergonomic Design
- Compact Form Factor with Full Feature Set for On-the-Go Printing
- Supports Industry-Leading Programming Languages BPL-Z™ and BPL-C™
- High Memory Capacity for Efficient Data Storage and Processing
- Designed for Mobile Label Printing Applications
- Ideal for Retail, Logistics, Warehousing, and Field Operations



SPP-L410

- 4" (112 mm) Mobile Label Printer for Full-Width Label Printing
- “Big Brother” to the SPP-L310 with Enhanced Capability
- Supports Large Media for High-Volume Label Applications
- Fully Mobile Design for On-the-Go Label Printing
- Part of the SPP-L Series with Rich Features and Utilities
- Ideal for Retail, Logistics, Warehousing, and Field Service Operations



MOBILE LABEL PRINTER XM7 SERIES



XM7-20

- 2" (58 mm) Compact and Rugged Mobile Label Printer
- Industrial-Strength Performance with Premium Feature Set
- High-Speed Printing with Clear, Legible Outputs
- Supports Diverse Fonts, Logos, and Barcodes
- Value-Added Software Support for Enhanced Usability
- Ideal for Markdown Labels, Replacement Tags, Leisure Tickets, Specimen Labels, and More



XM7-30

- 3" (80 mm) Premium Mobile Label Printer
- High-Quality, Reliable Printing Performance
- Hassle-Free Auto Pairing with Smart Devices
- USB Type-C® Connectivity for Charging and Data Communication
- Supports Power Delivery (PD) Charging for Greater Convenience
- Ideal for Supply Chain Labelling, Retail Tags, and Various Mobile Applications



MOBILE LABEL PRINTER XM7 SERIES

XM7-40



- 4" (112 mm) Rugged Mobile Label Printer with High-Performance Output
- Supports Both Liner and Linerless Media Printing
- Ultimate Durability for Demanding Indoor and Outdoor Applications
- Advanced Connectivity Options for Seamless Integration
- Ergonomic Design for Comfortable One-Handed Operation
- Ideal for Postal, Warehousing, Healthcare, and Field Service Applications

.....

XM7-40R



- 4" (112 mm) Mobile RFID Label Printer with Rugged Design
- Enables Lower Cost Per Label with Efficient RFID Encoding
- Supports UHF RFID Inlays Encoding as Close as 0.6" (16 mm)
- Smart Media Detection™ for Easy Setup and Operation
- Colour LCD Display for Clear User Interface and Control
- Optimised for Asset Tracking, Inventory Management, and Shipping/Receiving
- Ideal for Warehouses, Manufacturing Facilities, and Distribution Centres



RK26 Series

Wi-Fi 6 Rugged Mobile Computer

- Android 12 (GMS)
- Qualcomm 4290 Octa-core 2 GHz
- 64GB UFS Flash / 4GB LPDDR4X RAM
- Expansion: Micro SD card slot with SDHC (up to 32GB) and SDXC (up to 2TB) support
- With WIFI 6, Bluetooth 5.1 and NFC
- Suitable for Retail and Light-duty Warehousing



RS38 Series

5G Touch Mobile Computer

- Android 13 (GMS)
- Qualcomm QCM4490 Kryo Octa-core CPU 2.4 GHz
- 8GB LPDDR5 SDRAM/128GB UFS3.1 ROM
- Expansion: Micro SD Card Slot x1 , SDHC up to 32GB, SDXC up to 1TB
- With Wi-Fi 6E and 5G, Bluetooth 5.2
- RFID Read: Full tags support base on NFC forum
- Suitable for T&L, Retail and Warehousing.

MOBILE COMPUTERS



1500 Series

1500P General Handheld Scanner

- Data Capture: Linear imager
- Connectivity: Corded
- Optical Sensor: 2500 pixels
- Resolution: 3 mil
- Scan Rate: 520 scans/second
- Suitable for Retail, Healthcare, and Government

1500 Series

1504P General Handheld Scanner

- Data Capture: 2D imager
- Connectivity: Corded
- Optical Sensor: 1280 x 800 pixels
- Resolution: 3 mil - 1D barcode / 5mil - 2D barcode
- Scan Rate: 60 scans/second
- Suitable for Retail, Healthcare, and Government

BARCODE SCANNER



Tanso

10.5" POS Tablet

NEW MODEL COMING SOON

- 10.5" IPS Display
- Alder lake-N, N100 Processor
- 8GB RAM / 256GB SSD
- Windows 11
- Perfect for work, service, or interactive use

Includes protective case with kickstand and handle



MP11NX

All-In-One POS Tablet

- 10.95" IPS, 1200*1920 - Touch
- 4GB + 64 ROM
- Octa-Core Processor, Android
- Network 4G
- Wi-Fi / Bluetooth Enabled
- PaySuite® FLEX enabled
- Perfect for retail, hospitality, or service areas
- Optional Accessories: POS stand





M32-FHD 32" Large Format Touch display

Element M32-FHD is a 31.5" Full Flat Touch Screen LCD Digital Display. The very high contrast screen 3000:1, with slim bezel (20mm) free design and 1920 x 1080 (FHD) resolution ensures the sharpest of images.

- 30 Point Multi Touch Display
- 2 Points Hover Touch (6mm glass with gloves)
- I/O: HDMI, Display Port, VGA and USB
- 200 x 200mm VESA Mount
- Suitable for many applications and multi roles such as Digital Signage Display / Information Display, Self-Check In and Self-Check Out, or Self Service Terminals (Self Ordering).





M15-FHD 15" Digital Display

- Touch and Non-Touch options
- Stylish, compact stand with cable access for easy installation
- 100 x 100mm VESA Mount
- Suitable for many applications and multi roles such as Digital Signage Display / Information Display, Self-Check In and Self-Check Out, or Self Service Terminals (Self Ordering)

M22-FHD 22" Digital Display

- Slim, durable design (37.9mm width)
- Vivid colour portrait and landscape view
- 100 x 100 mm VESA Mount
- Capable of multi roles such as Kitchen Video System (KVS), Self-Check In and Self-Check Out, Self Service Terminals (Self Ordering), or act as Digital Signage Display / Information Display.

M22-OF 22" Open Frame Touch Display

- 10 Point Multi Touch Display
- I/O: HDMI, Display Port, VGA and USB
- 100 x 100mm VESA Mount
- Suitable for many applications and multi roles such as Digital Signage Display / Information Display, Self-Check In and Self-Check Out, or Self Service Terminals (Self Ordering).



GM156

Android Touch Terminal



- 15.6" HD touchscreen for smooth operation
- MediaTek G700 (MT8390) + Android OS for stable performance
- Dual display with NFC tap-to-pay support
- 20° - 90° Adjustment Comfort View Stand-Height Work
- Multi-port connectivity for easy device integration
- Switch between POS mode and touch monitor mode easily
- Ideal for retail and F&B.

CA850

Window Touch Terminal



- 15.6" Borderless True Flat, P-Cap Multi-Touch
- 8GB RAM + 128GB M.2 SSD Storage
- Intel® Alder Lake N: N97, i3-N305, Intel® Meteor Lake Core Ultra 5 125U
- Ultra-Slim Body & Attractive Metallic Design
- Modular Design (Reconfigurable to 5 Form Factors)
- Optional Peripherals: MSR, Customer Display (CDU), Fingerprint
- Standard 3-Year Warranty
- Perfect for retail counter, hospitality checkout, or service areas

TOUCH TERMINAL



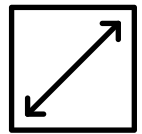
Orion Series Android POS Terminal

- 11.6", 15.6", or 21.5" Touchscreen Options with Android or Windows OS
- MediaTek G700 (MT8390) Processor or Intel Processor ensuring swift performance
- Versatile Form Factors: Configures as a Point of Sale system, Panel PC, or Touch Monitor
- Dual Displays & Customer NFC Tap-On Device Payments enabled
- Flexible Configurations: Wall-mounted, pole-mounted, or self-service kiosk with seamless transition between modes
- All-in-One Solution for both staff POS needs and customer interactions
- Suitable for many applications and multi-roles such as kiosks, digital displays, payment systems, or diverse retail environments.

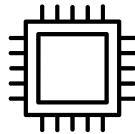
1 CHOOSE YOUR
FORM FACTOR



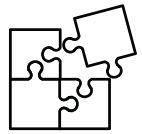
2 CHOOSE YOUR
PANEL SIZE



3 CHOOSE YOUR
FORM FACTOR



4 CHOOSE YOUR
ACCESSORIES
AND PERIPHERALS



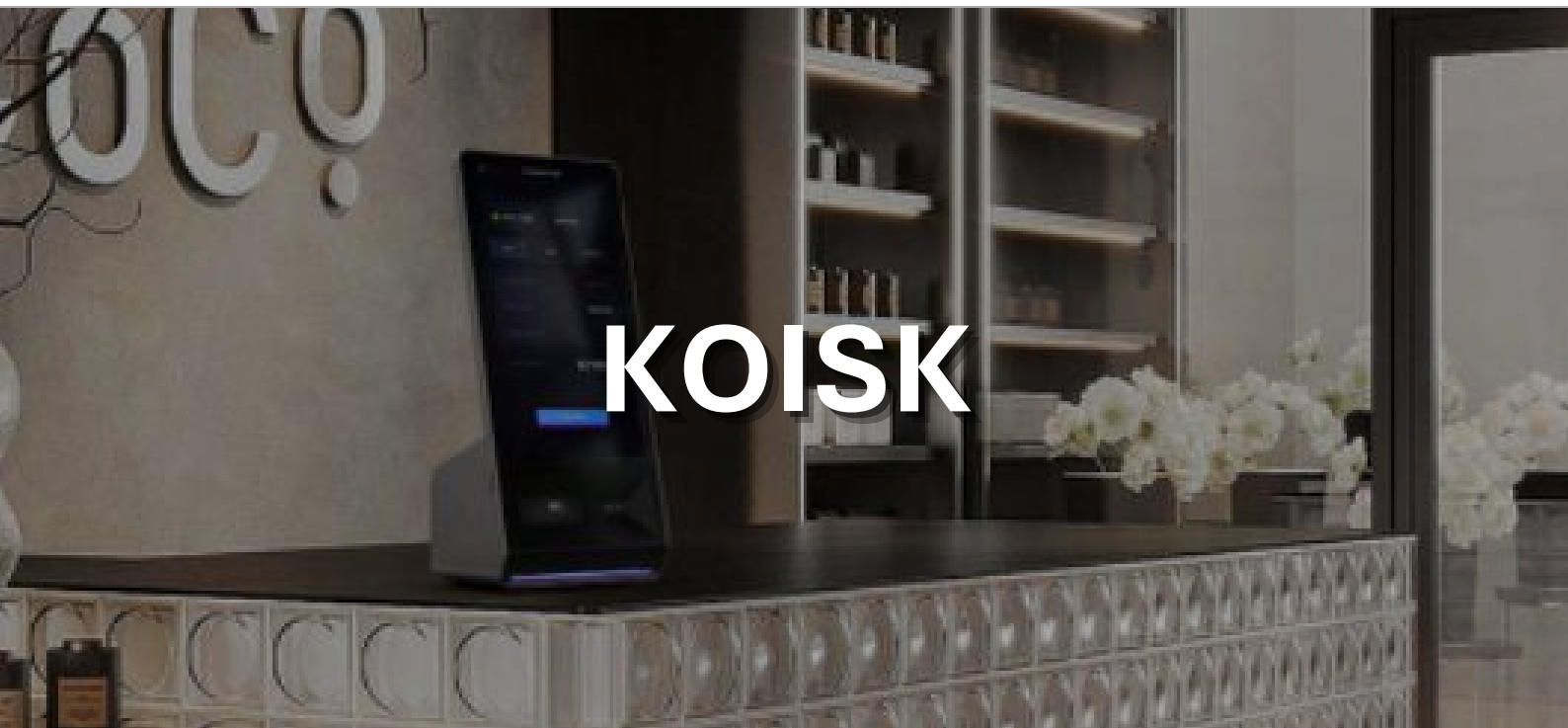
ORION SERIES



PK156

Android Self Service Kiosk

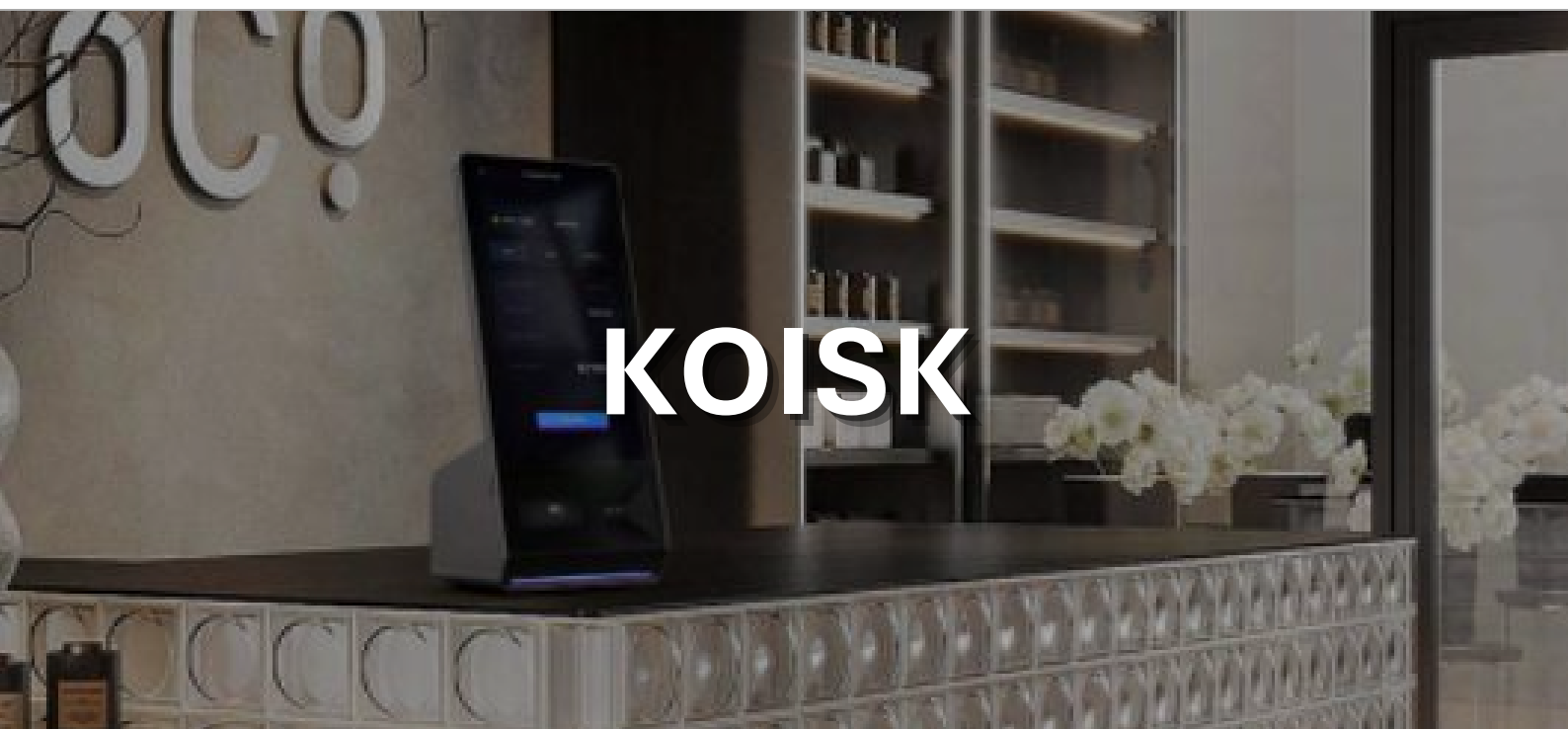
- 15.6" FHD, 1920*1080 + Touch
- 4GB + 64 ROM
- Octa-Core Processor, Android
- Network 4G
- Wi-Fi / Ethernet Enabled
- Available in desktop, freestanding, and wall-mounted configurations
- PaySuite® FLEX enabled
- Suitable for many applications and multi roles such as retail counter, a hotel lobby, a service kiosk, or a quick-service restaurant.





Nova 500 21.5" Kiosk Panel PC

- 21.5" (or 22") Full HD Projective Capacitive Display + Multi-Touch
- Configurable RAM, Storage, and Connectivity
- Intel Elkhart Alder Lake N97 CPU
- Slim, Modern Profile
- Available as a Wall-Mounted Unit
- Designed to Speed Up the Queuing Process and Streamline Self-Ordering
- Suitable for many applications and multi roles such as a retail environment, a self-ordering station, a service speed optimizer, or a kiosk panel PC.

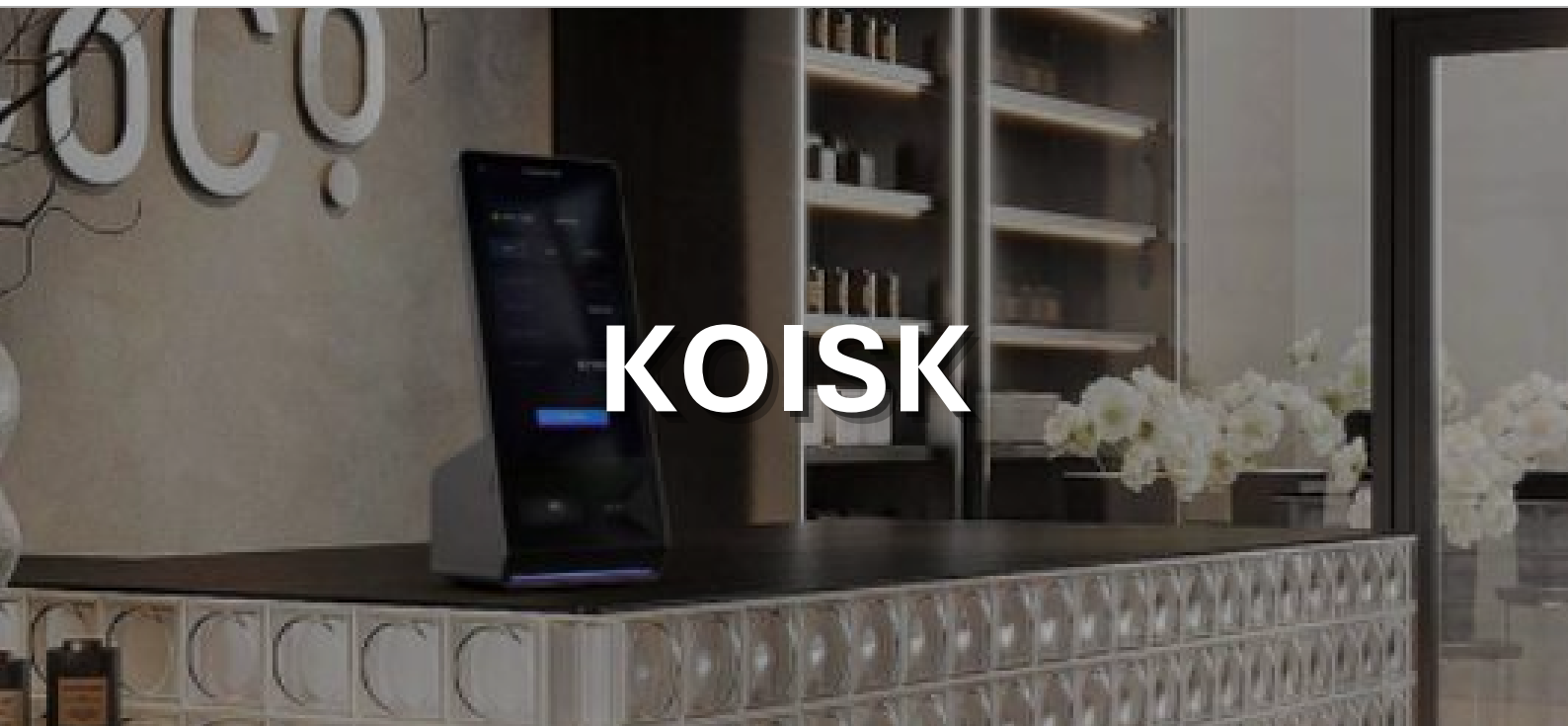


KOISK



Nova 600 21.5" Self-Ordering Kiosk

- 21.5" Full HD, 1920×1080 + PCAP Touch
- Processor Choice: MediaTek G700 / Intel® Alder Lake-N / Intel® Meteor Lake
- Supports Android 13 GMS, Windows 10/11 IoT, and Linux
- SoftPOS-Ready NFC & PaySuite® FLEX Enabled
- Wi-Fi / Bluetooth / Ethernet Enabled
- Flexible Configurations: Desktop, Floor Stand, and Wall-Mounted
- Service-Friendly Design with Front-Access Cover & Slide-Out Peripheral Tray
- Suitable for many applications and multi-roles such as a retail counter, a quick-service restaurant, or a self-service check-in kiosk.



RECEIPT PRINTER



RW80L MKII 3" Thermal Receipt Printer

- Triple interface design - USB, Ethernet and Serial
- Default resolution: 203dpi
- Patent design of unique vertical double auto cutter
- Windows, Linux, POSREady and OPOS Driver
- Easy maintenance
- Top paper loading
- Ideal solution for retail & hospitality environments

RW973 MKII Thermal Receipt Printer



- Unique vertical double auto cutter
- High printing speed up to 300mm/s
- Default USB interface, with optional RS232, Parallel, Ethernet and WiFi
- Paper jam detection and double paper near end detection
- Windows/Linux driver
- Complete OPOS driver
- Movable paper guard plate design supporting 58mm, 80mm wide thermal paper
- Optional waterproof cover
- Ideal solution for retail & hospitality environments

RW60+ 3" Thermal Receipt Printer



- Stylish & space-saving design
- Uninterrupted workflow, low noise
- Cutter jam auto-elimination
- 2" and 3" printing paper width available
- Versatile 5-Interface Connectivity
- Ideal solution for retail & hospitality environments

RW50L Thermal Receipt Printer



- Compact and stylish design for modern POS environments
- Side-opening cover for quick and hassle-free paper loading
- Dust-proof gear mechanism ensuring extended printer life
- High-speed printing up to 200mm/s
- Multi-language printing support
- 1D and 2D barcode compatibility
- Cost-effective solution for catering, retail, and hospitality

BARCODE SCANNER



P130BT 2D Hand-held Barcode Scanner (Cradle)

- High-performance hardware independent decoding technology
- Long scanning depth of field, suitable for various reading distances
- Quickly and accurately reads all types of barcodes (including blurry and low contrast barcodes)
- Solid and durable, 1.5m drop spec
- Wireless 10m Bluetooth transmission



P220 2D Desktop Barcode Scanner

- Desktop 2D scanner Omni- directional
- Solid-state hardware, higher stability and reliability
- Multiple common interfaces, highly compatible
- Independent R&D of core decoding technology
- Induction recognition
- Wide-angle adjustable scanning window



P135HH 2D Corded Scanner

- High-quality 0.3-megapixel rolling shutter camera
- Reads 1D & 2D barcodes on both paper and digital screens
- Rugged casing designed for enhanced durability
- IP54 rating with 1.2m drop resistance
- Stable corded connection for consistent scanning performance

Suitable for retail and hospitality environments.

BARCODE SCANNER

P135BT 2D Cordless Bluetooth Barcode Scanner



- Large-angle image sensor for wide and efficient barcode capture
- Accurate red aiming sights for precise targeting
- High-speed, omni-directional 1D & 2D barcode reading
- Up to 90-meter wireless working range
- Long-lasting 10-hour battery endurance
- Equipped with 4.2V / 2,000 mAh rechargeable battery
- Durable design with 1.2m drop resistance

P303HH Corded Scanner **HD**



- Low power consumption with high-performance scanning
- Reads all mainstream 1D & 2D barcodes with ease
- Optimized to quickly capture barcodes from mobile phone screens
- Comes with a convenient stand for hands-free operation
- Durable build with 1.5m drop resistance

P303BT 2D Cordless Bluetooth Barcode Scanner **HD**



- Low power consumption with high-performance scanning
- Reads all mainstream 1D & 2D barcodes with ease
- Optimized to quickly capture barcodes from mobile phone screens
- Comes with a convenient stand for hands-free operation
- Durable build with 1.5m drop resistance

Suitable for retail and hospitality environments.

BARCODE SCANNER



P900D Coded Scanner

- Auto-sensing technology enables hands-free operation
- Efficiently reads 1D & 2D barcodes from both paper and digital screens
- Optimized for fast and reliable mobile barcode scanning
- Low power consumption for long-term, stable performance



P55BT 2D Cordless Bluetooth Barcode Scanner

- Stylish yet rugged design for daily commercial use
- Low power consumption with strong scanning performance
- Reads all mainstream 1D & 2D barcodes with high accuracy
- Fast and reliable barcode capture from mobile phone screens
- Equipped with Find-Me and Vibrate alert functions
- Powerful 2500mAh battery
- Provides up to 7 hours of continuous operation



P881D Desktop Scanner

- Wide-angle lens design for enhanced barcode capture
- Optimized for fast and accurate mobile phone barcode reading
- Supports motion recognition for smooth, responsive scanning
- Adjustable scanning angle with 55° forward and backward rotation

Suitable for retail and hospitality environments.



Touchscreen Monitor

1515L 15" inch LCD

Overview

The Elo 1515L 15-inch standard format touchscreen monitor delivers professional-grade built for touch reliability in an affordable compact footprint. The space-saving touchscreen includes a stable base, side controls and lock-out capability for public use. Whether used as a desktop or a wall-mounted unit, the 1515L offers flexibility for mounting and two touch technology options.

Features

- Energy-saving LED backlights
- IntelliTouch (SAW) Single-touch
- USB & RS232 Controller
- Anti-glare
- Up to 1024 x 768 resolution at 75 Hz
- Dark Gray



TM-T81III POS Printer

Speed And Cost Effective Printing.

- Thermal line printing
- Built-in USB + Serial (9pin) / Ethernet Interface
- High-speed printing of up to 200mm/s
- Supported Operating Systems: Windows, Mac, Linux



TM-T82III POS Printer

Perfect Printing Companion For Your Business.

- Thermal line printing
- Built-in USB + UIB (Serial or Parallel interface), Ethernet interface
- Print speed of 250mm/s
- Supported Operating Systems: Windows 7 Sp1, 8, 8.1, 10 (32/64 bit), Server 2008, 2008 R2 2012, 2012 R2, 2016, 2019, Embedded POS ready 7, Standard 7, 8.1, Linux, Macintosh



RECEIPT PRINTERS



TM-T88VII Thermal Receipt Printer

Supercharge Your Business With Speed And Versatility.

- Thermal line printing
- Printer Driver: Windows Driver (APD), OPOS, OPOS.NET, JavaPOS (Windows, Linux), CUPS Driver (Linux), Mac Driver, TM Virtual Port Driver, ePOS SDK (iOS, Android, Javascript)
- Built-in USB and Ethernet, optional Serial, powered USB, Parallel and Fi-Wi dongle connectivity
- Print speed of up to 500mm/s
- Multiple-language support in one printer



TM-m30III POS Printer

Sleek And Compact, Built For mPOS Receipt Printing

- High speed printing (up to 300mm/sec)
- Compact footprint, antibacterial case materials.
- Built-in Bluetooth, Wi-Fi and USB-PD
- Support full cut, half cut and near-end paper detection
- Built in de-curl mechanism aids in flattening paper receipts
- UTF-8 Unicode font support
- Designed for Cloud printing



RECEIPT PRINTERS

Epson TM-T82X-II Thermal Receipt Printer

Flexibility And Reliability At Your Fingertips.



- Thermal receipt printing
- Easy maintenance with refreshed flatter surface design for simpler cleaning
- Available in two interface models: USB + Serial and USB + Ethernet for flexible system integration
- Print speed of up to 250mm/s for faster transaction processing
- Dual interface connectivity for flexible integration
- Enhanced durability and reliable performance for daily business operations
- Cost-effective solution suitable for retail and hospitality environments
- Successor to the TM-T82X with improved design and functionality
- Compact and user-friendly design for seamless deployment in various business settings

Current Stock Available (USB + Ethernet Interface)

A photograph of an Epson TM-T82X-II thermal receipt printer in a restaurant setting. The printer is on a table, and a receipt is being printed. The receipt shows a 30% discount. The background shows a restaurant interior with tables and chairs.

RECEIPT PRINTERS

Inkjet Colour Label Printer



ColorWorks C4050 On-Demand Colour Label Printer

- Equipped with new and improved PrecisionCore Micro TFP printheads
- Speedy print of up to 100mm per second
- Save up to 50% on labelling costs without needing to stock up on different types of pre-printed labels.
- High resolution printing at 1200x1200dpi
- Option to connect with Wi-Fi for mobile devices
- Suitable for Industrial, F&B, Warehousing, Medical and other Labelling applications.



LABEL PRINTER

LUNA X

All-In-One POS

An Experience.
Beyond Expectation.



HK560 All In One Terminal

- CPU: i3-6100U
- 4GB DDR 3 RAM, 128 SSD
- Solid State Drive Projected Capacitive Touch (PCT) For Optimum Performance and Reliability
- 15.6" Screen / 16:9 Aspect Ratio



HK950 All In One Terminal

- Core i3-6100U 2.3Ghz
- 15" Capacitive Touch
- 4GB RAM, 64GB SSD



LUNA X

All-In-One POS

Power Unleashed.
Limitless Versatility.



HK568 All In One POS



HK568

- J6412 CPU provide more economical choice with high performance and low power consumption
- Smart hinge design, screen rotation and screen height can be adjusted more flexibly
- 15.6" wide-screen POS display brings better experience
- Cube X box design, more space-saving



HK568U

- Intel Tigerlake I3 CPU bring more powerful performance
- Smart hinge design, screen rotation and screen height can be adjusted more flexibly
- 15.6" wide-screen POS display brings better experience
- Cube X box design, more space-saving

HERO II All-In-One POS

Powered to Succeed.
The New Hero in Town.



HK578 All In One POS



HK578

- J6412 CPU delivering economical yet high-performance stability and reliability with lower power consumption
- 15" TFT LCD (LED back light)
- Compact and sleek design elements
- Versatile foldable die-cast aluminum stand
- Multiple height adjustments and viewing angles
- Wall mount capability



HK578U

- i3/i5 generation CPU provide powerful performance
- Die-cast aluminum housing for high reliable
- With compact footprint and sleek design elements
- Carries the full suite of multiple ports: USB2.0&USB3.0, Serial, Cash Drawer and Network LAN
- Low-Profile, foldable base, Multiple Height Adjustments and VESA mount Capability



EDA52 Handheld Computer

EDA52 (2PIN) Android 11 with **GMS,WLAN**, S0703 Imager, IP67, 2.0GHz 8 core, 3GB/32GB Memory, 13MP+5MP Cameras, Bluetooth 5.0, NFC, Battery 4500 mAh, USB Type C, Kit includes USB -C Cable, Power adaptor must be ordered separately.

.....

EDA52 Handheld Computer

EDA52 (2PIN) Android 11 with **GMS,WWAN & WLAN**, S0703 Imager, IP67, 2.0GHz 8 core, 3GB/32GB Memory, 13MP+5MP Cameras, Bluetooth 5.0, NFC, Battery 4500 mAh, USB Type C,Kit includes USB -C Cable, Power adaptor must be ordered separately.

.....

ACCESSORIES



50136024-001

KIT, 5V/2A Power supply, Scanpal EDA 50k / 51 / 60 / 61K / 70/ 71/52/5S. Mobility Edge CT40 / CT60. Includes 5 PLUGS PACKED US,UK,AU,EU,IN adapters.

MOBILE COMPUTER



CT32 Handheld Computer

CT32: WIFI6E, No Sim, 6" Screen, Full Touchscreen, 8GB/128GB, Standard Range Engine-Red Laser, Front & Rear Camera, NFC, GMS, IP68, Standard Environment & Standard Battery (4500mAh), Launcher/Browser/BasicTE, Global

.....



ScanPal™ EDA10A Tablet

EDA10A: WIFI6, w/o fingerprint and eSIM, 10.1" Screen, Full Touchscreen, 8GB/128GB, Front&Rear Camera, Standard Battery, GMS, IP65, Standard, S0703 SR, Kitting Suzhou Plant, Rest of World

.....



CK62 Rugged Mobile Computer

CK62: 5G & Wi-Fi 6E, Nano & eSIM, 4" Screen, 47-Key Alphanumeric, 4GB/64GB, Standard Range Engine - Red Laser, Rear Camera, Standard Battery, GMS, IP65, Standard, Launcher/Browser/BasicTE, Global



MOBILE COMPUTER



PM45 Industrial Printer

PM45A, Full Touch Display, Ethernet/USB, Fixed Hanger, TT, 203 DPI, No Power Cord



PD45S Industrial Printer

PD45S0C, color LCD, Direct Thermal and Thermal Transfer printer, Ethernet/USB, 203dpi, no power cord

INDUSTRIAL PRINTER



PC42E-T Desktop Thermal Transfer Barcode Printer

PC42E-T, USB, Ethernet, 200dpi, Black, 1&0.5'', no power cord



PC45T Desktop Thermal Transfer Barcode Printer

PC45 Thermal Transfer, LCD, Latin Font, RTC, Ethernet, 203DPI, No Powercord

LABEL PRINTER

BARCODE SCANNER



1250g General Duty Scanner

1250G USB Kit: 1D, black scanner (1250g-2), flex neck presentation stand (STND-15F03-009-4), USB Type A 3m coiled cable (CBL-500-300-C00) and documentation

.....



Orbit HF680 2D Hands-Free Area-Imaging Scanner

HF680 GEN7 Hand-free scanner Kit, 2D, Black; 1.5m USB host cable (50152257-001), global SKU

.....



HH490 Handheld Scanner

HH490 APAC USB Kit with Stand;Omni-directional, 1D, PDF, 2D, black scanner (HH490-R1), USB 1.5m straight cable (CBL-500-150-S00-02), flexible presentation stand (STND-15F03-101-4)

BARCODE SCANNER



HH492 Handheld Scanner

Scanner KIT,HH492,Wireless ,2D,BLK,Charge and Communication Base(Base-100-2-492),1.5m USB CBL(50177360-001)

.....



1470G2D General Duty Scanner

1470G2D Omni-directional, 1D, PDF, 2D, black scanner (1470g2D-2), flexible presentation stand (STND-15F03-009-4), USB Type A 1.5m straight cable (CBL-500-150-S00)

.....



1472g General Duty Scanner

1472G2D APAC USB Kit: Omni-directional, 1D, PDF,2D, black scanner (1472g2D-2),charge & communication base

.....



IHS320X 2D Scanner

IHS320 2D Handheld Scanner Kit with 2M USB Straight Cable & Stand ISS100

BARCODE SCANNER



1950GUD General Duty Scanner

1950g USB Kit: General Purpose, 1D, PDF417, 2D, Ultra HD focus, Black, USB Type A 3m straight cable(CBL-500-300-S00), Asia Only

1950GHD General Duty Scanner

1950g USB Kit: General Purpose, 1D, PDF417, 2D, HD focus, Black, USB Type A 3m straight cable (CBL-500-300-S00)

1952GHD General Duty Scanner

1952GHD USB Kit: General Purpose, 1D, PDF417, 2D, HD focus, Black Scanner (1952GHD-2-A), USB Type A 3m straight cable (CBL-500-300-S00), Presentation Charge & Communication base (CCB10-010BT-07N), Asia Only

1952GUD General Duty Scanner

1952GUD USB Kit: General Purpose, 1D, PDF417, 2D, Ultra HD focus, Black Scanner (1952GUD-2-A), USB Type A 3m straight cable (CBL-500-300-S00), Presentation Charge & Communication base (CCB10-010BT-07N), Asia Only

BARCODE SCANNER



Xenon™ Ultra 1960G

Xenon Ultra USB Kit: Tethered, General Duty, 1D/2D, High Density, Black DRH 1960GHD-2, USB Cable (CBL-500-300-S00), APAC

.....



Xenon™ Ultra 1960LI

Xenon Ultra USB Kit: Tethered, Light Industrial, 1D/2D, Ultra-High Density, Black DRH 1960LI-2, USB Cable (CBL-500-300-S00), APAC

.....



Xenon™ Ultra 1962G

Xenon Ultra USB Kit: Bluetooth, General Duty, 1D/2D, High Density, Contact Charging, Black DRH 1962GHD-2, Battery (BAT-SCN11), USB Cable (3012-6337-001), Presentation Base (CCB-U00-G & 1962G-BAT-CUP), APAC



IDS Engage One 14 Touch AiO 143 RPOS

Retail redefined by design.

With security, durability, and flexibility built into its gorgeous design, the HP Engage One System meets the demands of your business and marks a new era in retail.

- Intel® Core™ i3 - 7100U 2.40 GHz processor
- Elite 14 LCD FHD SVA
- Engage One AiO 300nit No Int MSR Chassis
- Win10 IoT64
- 4GB (1x4GB) DDR42400
- 256GB PCIe Value TLC M.2 SSD
- HP Engage Adv. I/O Connectivity Base-att
- 3/3/3 AiO/POS Model 143 Warranty
- Suitable for Retail and Hospitality



POS TERMINAL



sektor



Engage One Pro i5-10500e

Ultra sleek and fast for exceptional experiences

Introducing the point of sale system meticulously crafted to elevate your customer experience and power essential business operations. It combines a sleek yet durable design with powerhouse computing and offers an abundance of deployment options so you can tailor it to your specific needs.

- Intel® Core™ i5 - 10500E processor
- 15.6" diagonal, FHD (1920 x 1080), touch, IPS, UWVA, anti-glare, 400 nits, 45% NTSC
- Win11 IoT64
- 8GB (1x8GB) DDR4-2666 SDRAM
- 256GB PCIe® NVMe™ SSD
- HP Engage Advanced I/O Hub
- 3/3/3 Warranty
- Suitable for Retail and Hospitality



POS TERMINAL



Engage Flex Pro G2 Retail System

Power to Drive Your Business

Drive business operations with a stable, secure, high-performance platform that also offers outstanding flexibility. Suitable for a wide range of deployments that span POS, digital signage, video surveillance, processing/controlling, OEM and more.

- Intel® Core™ i3/i5/i7 processor
- 12"/15" Touch Display
- Flexible modular design
- Win10 IoT / Win11 IoT ready
- Up to 16GB DDR4
- Up to 512GB PCIe SSD
- Multiple I/O for peripherals
- Optional MSR, NFC, Biometric modules
- 3/3/3 AiO/POS Warranty
- Suitable for Retail and Hospitality



TP80K 80mm Thermal POS Bill Printer



- 3" compact receipt printer with high printing speed 230mm/s
- Backlight logo design and glossy finished top cover, three LEDs for visualizing printer status
- Standard connection USB, Serial, and Ethernet, optional Bluetooth and wireless, an exemplary choice for retail and hospitality segments
- Desktop and wall-mounted supported
- High reliability: 100km TPH lifespan and 1.5 million cuts cutter life
- Support error reprint, making sure no order being missed
- Suitable for Supermarkets, Catering, Retail, etc

TP806L 3" Thermal Receipt Printer



- Provide Windows/Linux driver
- Provide complete OPOS driver
- Support page mode printing
- With double cash drawer driver
- High printing speed up to 250mm/s
- Three-in-one interface, including RS232, Ethernet and USB
- Embedded with 2D barcode edition algorithm which supports the 2D barcode common in the market, such as QRcode/PDF417
- Movable paper guard plate design which supports 58mm, 80mm wide thermal paper
- Suitable for Supermarkets, Catering, Retail, etc.



RECEIPT PRINTERS



MC110

Printing ID cards has never been so easy



- High-quality 300dpi printing
- Up to 150 colour cards per hour
- Single-sided to dual-sided option with field upgradability
- Free software - Card Exchange Producer Lie edition
- Windows and Mac compatible
- Robust, reliable build quality
- Contactless encoding option
- 2 year warranty (subject to the use of chromXpert ribbons)
- Ideal for Entry-level, mid to low-volume card issuance, and ISEGA accredited for use with food products (Black and white monochrome ribbon)

PR20305301

chromXpert
diamond YMCKO
MC110, MC210
MC310 series color
ribbon / 250 prints



PR20314305

chromXpert K
MC110, MC210,
MC310 series
Monochrome Ribbon
- Up to 2000 prints



PR20309601

Cleaning kit for MC
DTC series Direct-
to-card Printers



CARD PRINTER

VPOS VP-T3-910-I3



SINGLE DISPLAY



WITH SECOND DISPLAY



- Industrial Grade Aluminium casing
- True Bezel Free Designing
- High Performance 15inch LED Panel (1024*768)
- Cost effective: Outstanding performance at a competitive pricing
- i3 8th Gen
- 8GB DDR4 RAM
- 128GB SSD
- Support WIN 11 Pro
- 2 Years Warranty

POS TERMINAL

VPOS VPKS156



- 15.6" Smart POS Terminal (KIOSK)
- Supports Android or Windows OS
- Industrial Grade Mainboard
- Rich I/O Port Combinations
- Built-In 80mm Receipt Printer & 1D/2D Scanner
- Black or White Colour Options Available
- Perfect for retail counter, self-service kiosk, or hospitality checkout areas



Printer SV26

203DPI T/T USB/ET/BT

Thermal Transfer

- Equipped dual motor
- Print speed up to 127mm/s
- Ribbon roll capacity 300m
- 25.4 Ribbon Roller (Outer roll ribbon)
- Supporting TSPL-EZ printer language, Eltron and Zebra commands
- Large visual windows



Printer SV60

203DPI D/T USB/ET/BT

Thermal Direct

- Modern appearance design.
- 8MB SDRAM & 8MB Flash memory for a more flexible usage.
- Faster printing speed, 6 inches 152mm/s Max., to improve the daily efficiency.
- Rich emulation language compatibility: TSPL, ZPL, EPL, DPL.
- Supports airwaybill printing



LABEL PRINTER

Cash Drawer VP-350 4 Note/8 Coin 24V BLK

- Rugged structure with reinforced heavy steel
- Optional bill coin compartment
- Durability for 1 million operation
- Precision mechanism to assure wobble-free drawer moment
- Three-positions lock for maximum cash security
- Counter space saving



Cash Drawer VP-410/VP-410W 5 Note/8 Coin 24V BLK/WHITE

- Rugged and reliable design
- Reinforced heavy steel structure
- Precision mechanism for wobble-free drawer movements
- Three-positions lock for maximum cash security
- Designed for counter space saving
- Eases the process of handling cash payments

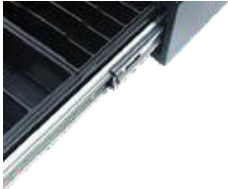
VP-410



VP-410W



VP-410R



VP-410R

- Thick gauge cold rolled steel (1.00mm)
- With ball bearing slide
- Micro switch w/ cash drawer status sensor

FT460

- FT-460 Flip Lid Cash Drawer Stainless Steel Top,
- 460mm (w) x 170mm (d) x 100mm (h)
- 24V Solenoid for Receipt Printer connection
- 6 Notes, 8 Coins
- Colour: Black





PWR-WUA5V12W0GB



CBL-TC5X-USBC2A-01



SG-TC2L-HSTRP1-01

TC22 (KT-WLMT0-T22B6ABC2-A6)

TC22; WLAN, Wifi 6, SE4710, 6" Display, 6GB/64GB, 16MP RFC, 5MP FFC, 2-Pin Back I/O, Standard Battery, NFC, BT, USB-C, GMS, ROW, Handstrap, USBC-Cable, Power Supply

TC27 (KT-WCMTB-T27B6ABC2-A6)

TC27; WWAN, 5G, Wifi 6, SE4710, 6" Display, 6GB/64GB, 16MP RFC, 5MP FFC, 2-Pin Back I/O, Standard Battery, NFC, BT, USB-C, SIM & ESIM, GMS, ROW, Handstrap, USBC-Cable, Power Supply

INDUSTRY USE

- Retail
- Warehouse & Distribution
- Hospitality



MOBILE COMPUTERS



ET401EA-301P1B2P-A6

ET401, 8", 5G, Standard, SR500, 6GB/64GB, ANDROID GMS, ROW SKU

ET401EB-301P1B2P-A6

ET401, 10", 5G, Standard, SR500, 6GB/64GB, ANDROID GMS, ROW SKU

ET4010A-001C1B0P-A6

ET401, 8", WIFI7, Standard, SE4100, 6GB/64GB, ANDROID GMS, ROW SKU

ET4010B-001C1B0P-A6

ET401, 10", WIFI7, Standard, SE4100, 6GB/64GB, ANDROID GMS, ROW SKU



PWR-WUA5V12W0GB



CBL-TC5X-USBC2A-01

INDUSTRY USE

- Retail & Hospitality
- Transportation & Logistic



SG-ET401-08EXO-01

ET401 8-inch Scanner Exoskeleton Rugged Boot Accy

SG-ET401-10EXO-01

ET401 10-inch Scanner Exoskeleton Rugged Boot Accy

ENTERPRISE TABLETS



CRD1S0T-RFD40-TC2X-CHG-1R



PWR-BGA12V50W0WW



CBL-DC-388A1-01



50-16000-219R

RFD4030-G00B700-WR

RFD40, Standard, Standard Range Circular Polarized Antenna, UHF RFID Only, Gun, No Imager, 7000mAh Battery, Midnight Black, 900MHz Worldwide

RFD4031-G00B700-WR

RFD40, Premium, Standard Range Circular Polarized Antenna, UHF RFID, Bluetooth, WiFi, Gun, No Imager, 7000mAh Battery, Midnight Black, 900MHz Worldwide

INDUSTRY USE

Healthcare • Retail • Hospitality





TC2205-0G1250SS-WR

TC22R Integrated Handheld RFID Reader, Gun, Wi-Fi 6, Android
GMS, SE4710 + FF/FF Cameras + Standard Range RFID, 6GB |
64GB, Standard 7,000mAh Battery, 900MHz Worldwide



CRD-TC2R-BS1CG-01



CBL-TC5X-USBC2A-01



PWR-WUA5V12W0GB

INDUSTRY USE

Healthcare • Retail • Hospitality



RFID READER



ZT51043-T0P0000Z

TT Printer ZT510; 4", 300 dpi,
UK/AU/JP/EU Cords, Serial, USB,
Gigabit Ethernet, Bluetooth 4.0,
Tear, Mono, ZPL

ZT51042-T0P0000Z

TT Printer ZT510; 4", 203 dpi,
UK/AU/JP/EU Cords, Serial, USB,
Gigabit Ethernet, Bluetooth 4.0,
Tear, Mono, ZPL



ZT61046-T0P0100Z

TT Printer ZT610; 4", 600 dpi,
UK/AU/JP/EU Cords, Serial, USB,
Gigabit Ethernet, Bluetooth 4.1, USB
Host, Tear, Color Touch, ZPL

ZT61043-T0P0100Z

TT Printer ZT610; 4", 300 dpi,
UK/AU/JP/EU Cords, Serial, USB,
Gigabit Ethernet, Bluetooth 4.1, USB
Host, Tear, Color Touch, ZPL



ZT41143-T0P0000Z

TT Printer ZT411; 4", 300 dpi,
UK/AU/JP/EU Cords, Serial, USB,
10/100 Ethernet, Bluetooth 4.1/MFi,
USB Host, EZPL

ZT41142-T0P0000Z

TT Printer ZT411; 4", 203 dpi,
UK/AU/JP/EU Cords, Serial, USB,
10/100 Ethernet, Bluetooth 4.1/MFi,
USB Host, EZPL



INDUSTRIAL PRINTERS



ZT11142-T0P000FZ

TT Printer ZT111; 4", 203 dpi, Thermal Transfer, Tear, UK/AU/JP/EU Cords, USB, Serial, Ethernet, BTLE, USB Host, EZPL



ZT23142-T0P000FZ

TT Printer ZT231; 4", 203 dpi, Thermal Transfer, Tear, UK/AU/JP/EU Cords, USB, Serial, Ethernet, BTLE, USB Host, EZPL

INDUSTRY USE

- Retail
- Healthcare
- Manufacturing
- Transportation & Logistic



INDUSTRIAL PRINTERS



800300-250AP



800300-301



CSR2C-SW00-L



104523-111

ZC11-0000000AP00

Printer ZC100, Single Sided, UK/EU/US Cords, USB Only, Windows Driver

INDUSTRY USE

- Retail/Hospitality
- Identification

ZC31-000C000AP00

Printer ZC300, Single Sided, UK/EU/US Cords, USB & Ethernet, Windows Driver

INDUSTRY USE

- General Access Control
- Education
- Retail/Hospitality
- Financial Services



CARD PRINTERS



ZQ22-BB6B1KA-00

ZQ220 Plus, 80mm mobile printer, receipt & label, BT5.0, NFC, CPCL & ESC-POS, power adapter, USB cable and charging, English/Latin/Tradl Ch/Viet, Group A

INDUSTRY USE

Transportation & Logistics • Government • Retail & Hospitality • Field Services

ZQ31-AAE04TA-00

DT Printer ZQ310 Plus, BT 4.X, No Lbl Sen, Outdoor Use, English, Trad CN, Vietnamese Fonts, Group A

ZQ31-AAW03RA-00

DT Printer ZQ310 Plus, 802.11AC & BT 4.X, Lbl Sen, Indoor Use, English, Trad CN, Vietnamese Fonts, Group A

INDUSTRY USE

Retail • Field Service • Transportation & Logistics • Government • DSD • Notices • Courier



RECEIPT PRINTER



ZD23042-30PC00EZ

Thermal Transfer Printer (74/300M) ZD230; Standard EZPL, 203 dpi, APAC Power Cord bundle (EU, UK), USB, Ethernet

INDUSTRY USE

Transportation & Logistics • Manufacturing • Retail • Healthcare

ZD23042-30PG00EZ

Thermal Transfer Printer (74/300M) ZD230; Standard EZPL, 203 dpi, APAC Power Cord bundle (EU, UK), USB



ZD4A042-30PE00EZ

Thermal Transfer Printer (74/300M) ZD421; 203 dpi, USB, USB Host, Ethernet, BTLE5, APAC Cord bundle (EU, UK, AUS, JP), Swiss Font, EZPL

INDUSTRY USE

Transportation & Logistics • Government • Retail • Healthcare • Hospitality

ZD4A043-30PE00EZ

Thermal Transfer Printer (74/300M) ZD421; 300 dpi, USB, USB Host, Ethernet, BTLE5, APAC Cord bundle (EU, UK, AUS, JP), Swiss Font, EZPL



ZD6A043-30PF00EZ

Thermal Transfer Printer (74/300M) ZD621; 300 dpi, USB, USB Host, Ethernet, Serial, BTLE5, APAC Cord bundle (EU, UK, AUS, JP), Swiss Font, EZPL

INDUSTRY USE

Government • Retail • Healthcare • Hospitality



LABEL PRINTER



PWR-BGA24V78W4WW



50-16000-219R

KC50A22-G0B1C0-A6

KC50 Kiosk Computer 22in, Wifi6, Android GMS, 8GB/128GB, Prem Feature (includes PoE,NFC,Vib), F Cam, RoW

INDUSTRY USE

- Retail: Grocery & Specialty
- Hospitality
- Airports/Travel
- Healthcare
- Parcel Management
- Manufacturing





DS2278-SR7U2100PRW

DS2278-SR BLACK PRESENTATION CRADLE USB KIT: DS2278-SR00007ZZWW SCANNER, CBA-U21-S07ZBR SHIELDED USB CABLE, CR2278-PC10004WW CRADLE

.....



DS4608-HD7U2100SGW

DS4608-HD Black with Stand USB KIT: DS4608-HD00007ZZWW Scanner, CBA-U21-S07ZBR Shielded USB Cable, 20-71043-04R Stand

.....



DS8178-SR7U2100SFW

DS8178-SR BLACK FIPS STANDARD CRADLE USB KIT: DS8178-SR0F007ZZWW SCANNER, CBA-U21-S07ZBR SHIELDED USB CABLE, CR8178-SC100F4WW CRADLE

.....



DS9308-SR4U2100AZW

DS9308-SR BLACK USB KIT: DS9308-SR00004ZZWW SCANNER, CBA-U21-S07ZBR SHIELDED USB CABLE



BARCODE SCANNER



LS2208-SR20007R-UR

LS2208 Black with Stand USB Kit: LS2208-SR20007R Scanner, CBA-U01-S07ZAR USB Cable, 20-61019-02R Stand



SP2002-SR4UR700SGW

Kit-: SP2002-SR400000SGW SP2002-SR Black with Stand, CBL-U20755-01 7' USB Cable with Right Angle Connector



DS2208-SR7U2100SGW

DS2208-SR BLACK (WITH STAND) USB KIT: DS2208-SR00007ZZWW SCANNER, CBA-U21-S07ZBR SHIELDED USB CABLE, 20-71043-04R STAND

INDUSTRY USE

Travel Transportation • Manufacturing • Retail • Hospitality



BARCODE SCANNER



SureMDM | Mobile Device Management

SureMDM is the device management solution preferred by beginners and seasoned IT professionals alike. Using a single pane of glass IT admins can secure, monitor, and manage Android, iOS/iPadOS, Windows, macOS, Linux, and Wear OS devices. SureMDM perfectly complements its easy-to-understand interface with a rich, powerful functionality set. In conjunction with its affordable price, these features make SureMDM an excellent fit for deployments of any size.

Benefits of Using a Mobile Device Management Solution

- Save time by setting up apps and content on many devices at once from a central console, and push updates.
- Improve stakeholder confidence by bolstering your network's security and ease of management.
- Prevent device loss with constant inventory tracking, and use location-tracking to find and secure misplaced devices.
- Lower maintenance costs by replacing many in-person repairs with remote troubleshooting via a device management solution.
- Establish clear boundaries for worker-owned devices to manage sensitive data without overstepping personal boundaries.
- Boost productivity by blocking access to games and entertainment via the on-device MDM app.



BarTender Software (On-premises)

Centralized, robust, and secure

BarTender label management software is ideal for businesses that operate in regulated industries or span multiple locations and need to control design and printing throughout the organization.

BarTender Cloud

Simple, flexible, and powerful

Achieve true labeling agility with BarTender Cloud. This easy-to-deploy solution offers the power of BarTender's centralized, standardized labeling capabilities while minimizing your IT burden.

BarTender Track & Trace

Say goodbye to inventory chaos

BarTender Track & Trace delivers intuitive, item-level tracking tools to eliminate delays, losses, and unplanned costs within your daily operations.

Velocity

Maximize Productivity for the Evolving Workforce

Velocity is the expandable platform to transform the mobile workforce experience



Improve worker productivity

Gain operational insights to discover latency in your operations, then optimise workflows, handle exceptions, and introduce automation for improved productivity.



Integrate new operational technologies

The Velocity platform makes it easy to expand your operational tech stack. It's easy to add voice-directed tasks, or explore other emerging technologies, all while preserving your existing enterprise systems.

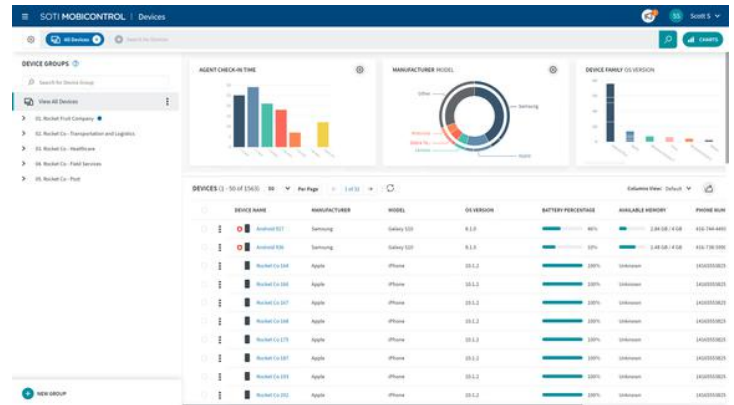


Protect your enterprise application investment

Velocity interfaces to your existing enterprise applications without the need to migrate or modify the host application.



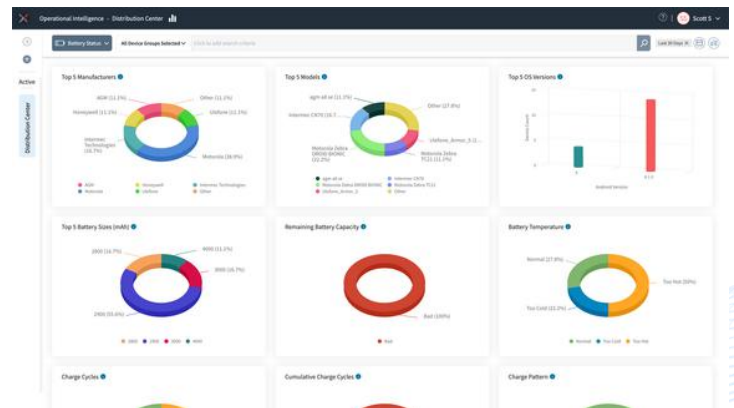
Mobility Management



SOTI MobiControl is an Enterprise Mobility Management solution that enables organizations to track, manage and secure mobile devices from unboxing to retirement. Get total visibility and control over any device, any form factor and any operating system, making business mobility easy and minimizing downtime.



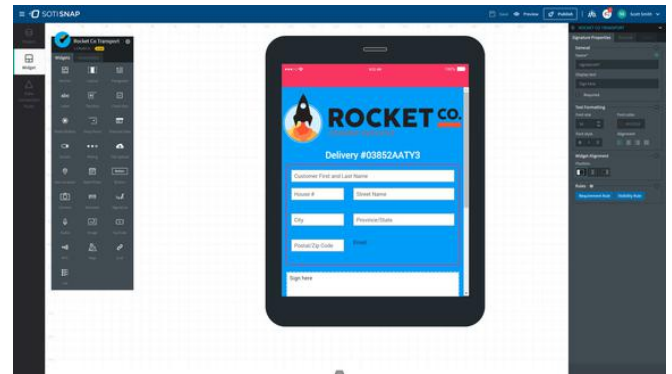
Diagnostic Intelligence



SOTI XSight is a diagnostic intelligence and support solution that provides organizations with the tools needed to proactively fix mobile device problems faster. SOTI XSight provides real-time visualization of analytics-based insights to help make smarter, data-driven decisions.



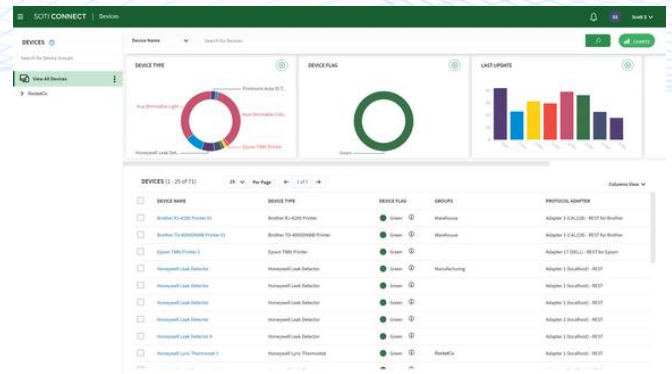
Digitize Processes



SOTI Snap enables organizations to rapidly create mobile apps that digitize business processes and boost worker productivity.



Printer Management



SOTI Connect is an enterprise management solution that provides an organization complete lifecycle management of its mobile and industrial printers.



Community



SOTI Pulse is an online community for SOTI partners, customers and product experts to collaborate with each other.

CONTACT US FOR A QUOTE

sektor

Sektor Distributors Sdn Bhd

✉ sales.my@sektor.co

☎ 03 7863 9033

No 12A, Jalan 51/225A,
PJCT, Corporate Hub
46100 Petaling Jaya
Selangor, Malaysia



LinkedIn



FaceBook



Sektor.MY