

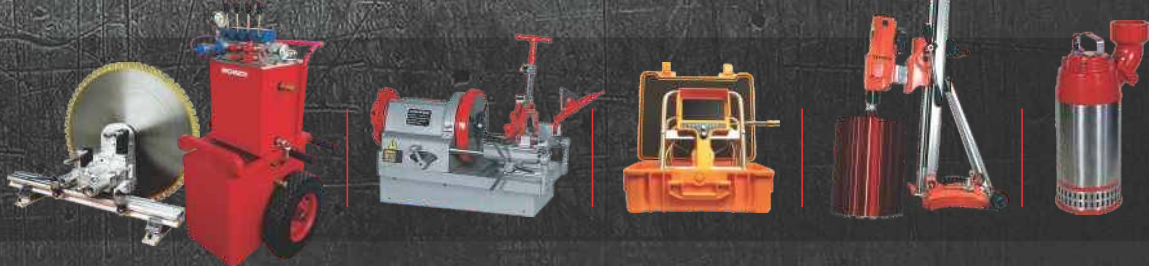
MACHINERY®

INDUSTRIAL RANGE



2017 | 2018

HIGH QUALITY
FOR PROFESSIONALS



MACHINERY established in 1990 is an innovative enterprise that always keeps close eyes on the latest development of relative products & technology.

MACHINERY enjoys high reputation in the market since its entire Imported product has passed ISO 9001 quality guarantee system, CE Standard, GS, TUV & (CCC) Certificate

- The Products of **MACHINERY** will be kept continuously innovating & improving, while the company will supply its clients the best products & services at a minimum price, our purpose is to meet the up-rising demands of customers.



Strength & Growth come only through continuous effort.



A Successful Team is a group of many hands & one mind.



Architect University Students (USEK) visiting our Showroom



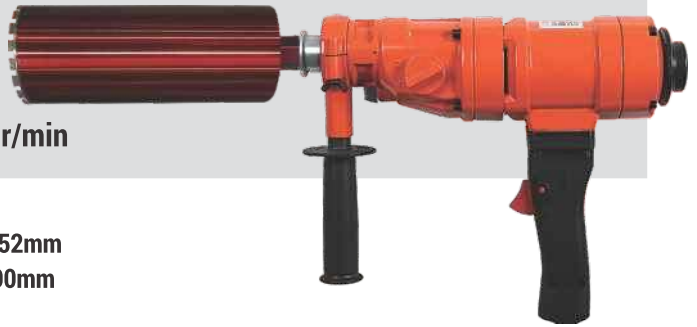
HIGH QUALITY FOR PROFESSIONALS

www.coring.us

DD80 PORTABLE DIAMOND DRILL

- DRILL MAX | 90MM
- VOLTAGE | 220V / 50HZ
- POWER | 1500W
- 2 SPEED | 2950 & 2100 r/min

- ▶ It has 2 speed
High Speed for small bit 10-52mm
& Low Speed for the bit 52-90mm
- ▶ It is fitted with safety clutch.



DD166 PORTABLE DIAMOND DRILL

- DRILL MAX | 166MM
- VOLTAGE | 220V / 50HZ
- POWER | 1900W
- SPEED | 2100 r/min

- ▶ It adopts dry drilling bit, which can be used for drilling bore & installing pipe line



DE180 PORTABLE DIAMOND DRILL

- DRILL MAX | 180MM
- VOLTAGE | 220V / 50HZ
- POWER | 2000W
- SPEED | 2800 r/min

- ▶ It adopts dry drilling bit, which can be used for drilling bore & installing pipe line



GQ[®]



DD380

DIAMOND CORE DRILL

- DRILL MAX | 90MM
- VOLTAGE | 220V / 50HZ
- POWER | 1500W
- 2 SPEED | 2950 & 2100 r/min

- ▶ It has 2 speed :
 - » High Speed for small bit 10-52mm
 - » Low Speed for the bit 52-90mm
- ▶ It is fitted with safety clutch.



DE2001

DIAMOND CORE DRILL

- DRILL MAX | 200MM
- VOLTAGE | 220V / 50HZ
- POWER | 3300W
- SPEED | 700 r/min

- ▶ It's equipped with safety clutch & current overload protection switch, which can prevent motor from overloading & operate the machine safety when the drill is blocked or the twisting force is too strong.

GQ®

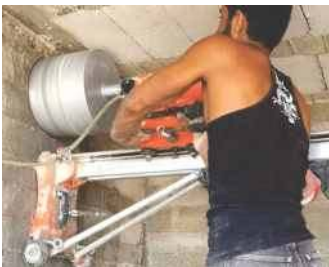


DD205

DIAMOND CORE DRILL

- DRILL MAX | 205MM
- VOLTAGE | 220V / 50HZ
- POWER | 2400W
- SPEED | 600 r/min

- ▶ It's equipped with safety clutch & current overload protection switch, which can prevent motor from overloading & operate the machine safety when the drill is blocked or the twisting force is too strong.



DD255 DIAMOND CORE DRILL

- DRILL MAX | 255MM
- VOLTAGE | 220V / 50HZ
- POWER | 2600W
- 2 SPEED | 480 & 900 r/min

- ▶ It has 2 speed settings.
- ▶ High Speed or small bit 10-110mm & Low Speed for the bit 115-255mm
- ▶ It is fitted with safety clutch.



DD300 DIAMOND CORE DRILL

- DRILL MAX | 350MM
- VOLTAGE | 220V / 50HZ
- POWER | 3500W
- 2 SPEED | 480 & 900 r/min

- ▶ It has 2 speed settings.
- ▶ High Speed or small bit 10-120mm & Low Speed for the bit 127-355mm
- ▶ It is fitted with safety clutch.



DD 300A DIAMOND CORE DRILL

- DRILL MAX | 350MM
- VOLTAGE | 220V / 50HZ
- POWER | 3500W
- 2 SPEED | 480 & 900 r/min

- ▶ It adopts dry drilling bit, which can be used for drilling bore & installing pipe line



DD205B DIAMOND CORE DRILL

- DRILL MAX | 205MM
- VOLTAGE | 220V / 50HZ
- POWER | 2400W
- SPEED | 600 r/min

- ▶ It's equipped with safety clutch & current overload protection switch, which can prevent motor from overloading & operate the machine safety when the drill is blocked or the twisting force is too strong.



DD300B DIAMOND CORE DRILL

- DRILL MAX | 350MM
- VOLTAGE | 220V / 50HZ
- POWER | 3500W
- 2 SPEED | 480 & 900 r/min

- ▶ It has 2 speed settings.
- ▶ High Speed for small bit 10-52mm & Low Speed for the bit 52-90mm
- ▶ It is fitted with safety clutch.



DD500B DIAMOND CORE DRILL

- DRILL MAX | 500MM
- VOLTAGE | 220V / 50HZ
- POWER | 2400W
- 3 SPEED | 360, 750 & 1000 r/min

- ▶ It's equipped with safety clutch & current overload protection switch, which can prevent motor from overloading & operate the machine safety when the drill is blocked or the twisting force is too strong.



VACUUM PUMP



• DIAMOND CORE BITS IN LASER SEGMENTS WELD

BD 10X120	BD24X320	BD35X320	BD 60X400	BD107X400	BD150X400	BD254X400
BD12X120	BD25X320	BD38X400	BD 63X400	BD110X400	BD160X400	BD274X400
BD14X220	BD26X320	BD40X400	BD 71X400	BD115X400	BD166X400	BD300X400
BD16X320	BD28X320	BD45X400	BD 76X400	BD120X400	BD180X400	BD320X450
BD18X320	BD30X320	BD50X400	BD 83X400	BD127X400	BD202X400	BD350X450
BD20X320	BD32X300	BD53X400	BD 90X400	BD132X400	BD220X400	BD400X450
BD22X320	BD34X320	BD57X400	BD102X400	BD140X400	BD244X400	BD450X450
						BD 500X450

• APPLICATION

Its diameter is from 10mm to 500mm, it is especially suitable for drilling or sampling in the high particle size of heavy reinforcement concrete, granite, brick wall, asphalt.....



• EXTENSION DRILL ROD

250mm | 300mm | 350mm | 400mm | 450mm | 500mm



• BIT DIAMOND DRILL DRY TYPE

This Bit used for Drilling Hard & Fragile Materials, such as Granite, Marble, Ceramic Tile & Glass ...
Size | from 10x100 ▶▶ 102x100

BDSE DIAMOND BIT SET DRY

- » Include Core Drill | 127mm x 150mm
- » 65mm x 150mm | 117mm x 150mm
- » 38mm x 150mm | 52mm x 150mm
- » Taper Pilot Drill | Hex Adaptor
- » SDS Plus Adaptor 25cm | Taper Blow Case
- » SDS plus Adaptor 11.5cm



DIAMOND DISK

DD110 DD105 DD114



» for
**Stone
& Granite**



» for
Ceramic

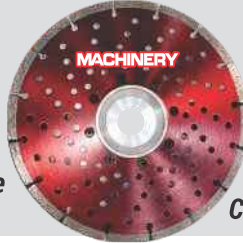


» for
Concrete

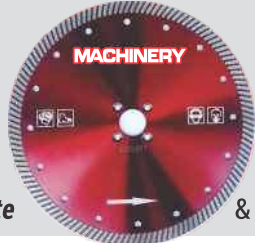
DD230C DD230R DD230T



» for
Concrete



» for
**Hard
Concrete**



» for
**Stone
& Granite**

DD300C DD300S DD35R



» for
Ceramic



» for
**Stone
& Granite**



DD350 DD400 DD450



» for
**Hard
Concrete**

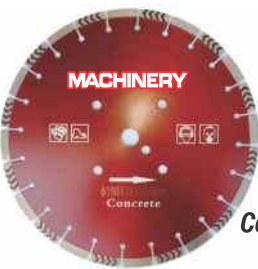


» for
**Hard
Concrete**

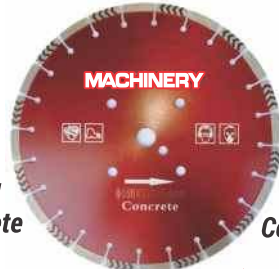


» for
**Hard
Concrete**

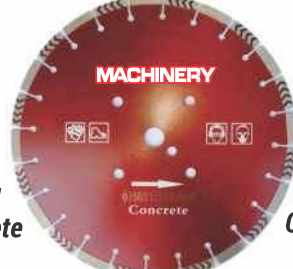
DD700 DD800 DD1000



» for
**Hard
Concrete**



» for
**Hard
Concrete**



» for
**Hard
Concrete**

WSH HYDRAULIC WALL SAW

- Hydraulic wall saw is a very powerful wall saw used for cutting reinforced concrete, brick & other building materials, up to 730 mm thickness & sawing including stair, bevel & flush cutting.
- It can be used for all kinds of openings.

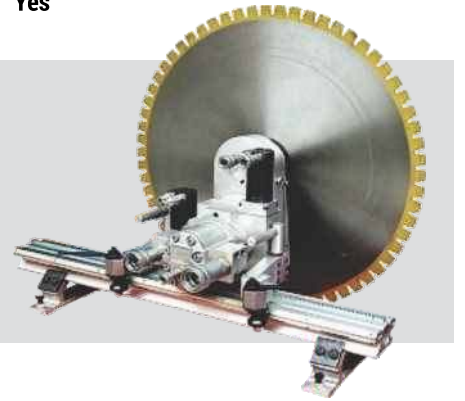


POWER UNIT

CODE	WSH	WSHRC
Rated Voltage	380V / 50HZ	380V / 50HZ
IP Protection Code	IP54	IP54
Pressure Stages	3	3
Max. Operating Pressure	220bar	220bar
Power	30KW	25KW
Oil Flow Rate	30-100l/min.	30-100l/min.
Weight	130kg	130kg
Remote Control	No	Yes

SAWING HEAD

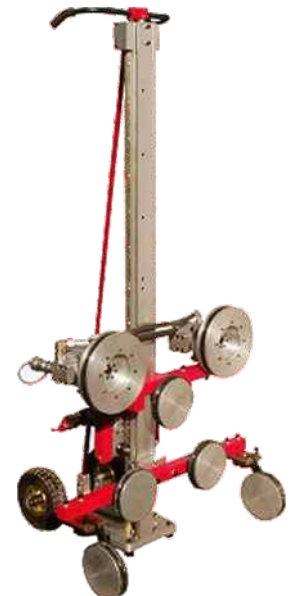
Saw Blade Diameter Range	800-1600mm
Cutting Depth	730mm
Max. Oil Flow Rate	100l/min.
Max. Operating Pressure	200bar
Gearing	gear
Rotation Speed	450 950 1300Rpm
Weight	38kg



WSHW HYDRAULIC WIRE SAW

- Wire saw system, in combination with the hydraulic power unit, such as bridge cap beam, box beam & support beam, pier, foundation, underwater concrete, etc.
- It is designed to cut & remove super thick and heavy reinforced concrete & irregular concrete.

Max. Wire Storage	12M
Total Travel	1500MM
Width (variable)	1050MM
Depth	700MM
Height	2100MM
Length of Protective Cover	1650MM
Drive Wheel	280MM
Storage Wheel	200MM
Total Weight	110KG



CONCRETE FLOOR CUTTER

- Electric Floor saw is a very powerful saw machine used for cutting reinforced concrete, can cut all the Roof, under floor, road & other building materials, up to 400 mm thickness & sawing including stair, bevel & flush cutting.

WSF700

- Voltage | 380v
- Power | 7.5kw-10hp
- Max blade | 700mm
- Max cut | 270mm
- Weight | 190kg

WSF1000A

- Voltage | 380v
- Power | 11kw-15hp
- Max blade | 1000mm
- Max cut | 40cm
- Weight | 320kg



- ▶ Auto fit
- ▶ Can cut left & right

GASOLINE / DIESEL CONCRETE FLOOR CUTTER

- Floor saw is a very powerful saw machine used for cutting reinforced concrete, can cut all the Floor, Roof & road

Type	WSF300	WSF400	WSF450	WSF700G
Power	Gasoline	Gasoline	Diesel	Gasoline
Brand	Robine	Robine	Kipor	Honda
Max Blade	300mm	400mm	450mm	700mm
Max Cutting	120cm	140mm	160mm	280mm



GSO CUT-OFF SAW MACHINE

- Engine | Gasoline Oil / Stroke Cool Air
- Power | 85 cc
- Blade Diameter | 400mm
- Max Cut | 150mm
- Weight | 13kg



CHP32N

CHP36

ROTARY HAMMER

- SDS plus
- Power | 1200W
- Volt | 220v
- Net Weight | 3kg
- Impact Joule | 6J
- Max Drilling | 32mm

- ▶ *BMC Box*
- ▶ *Grease Lubrication*
- ▶ *Accessories | Pointed & Flat Chisels.*

- SDS plus
- Power | 1600W
- Volt | 220v
- Net Weight | 4kg
- Impact Joule | 9J
- Max Drilling | 36mm



CHP40N

ROTARY HAMMER

- SDS max
- Power | 1500W
- Volt | 220v
- Net Weight | 6.5kg
- Impact Joule | 10J
- Max Drilling | 40mm

- ▶ *BMC Box*
- ▶ *Grease Lubrication*
- ▶ *Accessories | Pointed, Flat Chisels & Rotary Bits*



CHP45N

DEMOLITION HAMMER

- SDS max
- POWER | 1300W
- VOLT | 220v
- NET WEIGHT | 6.5kg
- IMPACT JOULE | 15J

- ▶ *BMC Box*
- ▶ *Grease Lubrication*
- ▶ *Accessories | Pointed & Flat Chisels.*



CHP 65 DEMOLITION HAMMER

- Power | 1500W
- Volt | 220v
- Net Weight | 15kg
- Impact Joule | 45J



- ▶ **Metal Box**
- ▶ **Accessories | Pointed & Flat Chisels.**

CHP 65 V DEMOLITION HAMMER

- Power | 1700W
- Volt | 220v
- Net Weight | 17kg
- Impact Joule | 65J



- ▶ **Metal Box**
- ▶ **Accessories | Pointed & Flat Chisels.**

CHP 2000 DEMOLITION HAMMER

- Power | 2100W
- Volt | 220v
- Net Weight | 23kg
- Impact Joule | 85J



- ▶ **BMC Box**
- ▶ **Grease Lubrication**
- ▶ **Accessories | Pointed & Flat Chisels**



ELECTRIC DRILL D105



Drill capacity	Steel 10mm Wood 18mm Concrete 16mm
No-Load Speed	0-2500r/min
Rated Input Power	500W
Rated Voltage	220/110V~

IMPACT DRILL DR 132



Drill capacity	Steel 13mm Wood 25mm Concrete 16mm
No-Load Speed	1400/2300r/min
Max Impact Rate	28000/46000r/min
Rated Input Power	620W
Rated Voltage	220/110V~

CORDLESS HAND DRILL DC 10120



Drill Capacity	Steel 10mm Wood 30mm
No-Load Speed	0-600r/min

ANGLE DRILL G1251



Max Disc Diameter	115/125mm
Hole Diameter of Disc	22.2mm
Rated Speed	11000r/min
Rated Input Power	850W
Rated Voltage	220/110V~

ANGLE DRILL G1252



Max Disc Diameter	125mm
Hole Diameter of Disc	22.2mm
Rated Speed	9200r/min
Rated Input Power	1200W
Rated Voltage	220/110V~

ANGLE DRILL G180/G180-2



Max Disc Diameter	180/230mm
Hole Diameter of Disc	22.2mm
Rated Speed	8500/6500r/min
Rated Input Power	2000W
Rated Voltage	220/110V~

DIE GRINDER DG103/DG104 ADJUSTABLE SPEED



Collet Chuck Diameter	6mm
Max Outer-Dia.	25mm
Rated Speed	27000/12000-27000r/min
Rated Input Power	500W
Rated Voltage	220/110V~

DIE GRINDER DG105



Collet Chuck Diameter	6mm
Max Outer-Dia.	25mm
Rated Speed	12000-27000r/min
Rated Input Power	600W
Rated Voltage	220/110V~

ROTARY HAMMER H26F-3



Max Drilling Diameter	26mm
No-Load Speed	0-900r/min
Rated Input Power	800W
Rated Voltage	220/110V~

DEMOLITION HAMMER H401



Max Impact Rate	900-1800/min
Rated Input Power	1500W
Rated Voltage	220/110V~

ROTARY HAMMER H521 DUAL PURPOSE



Max Drilling Diameter	52mm
No-Load Speed	120-250r/min
Rated Input Power	1500W
Rated Voltage	220/110V~

DEMOLITION HAMMER H802



Impact Rated Speed	1030/mm
Single Impact Strength	about 60J
Rated Input Power	1900W
Rated Voltage	220/110V~

WET GRINDER GW1101



Max Disc Diameter	115mm
Rated Speed	2000-4900r/min
Rated Input Power	950W
Rated Voltage	220/110V~

WET GRINDER GW1001



Max Disc Diameter	100mm
Rated Speed	5600r/min
Rated Input Power	950W
Rated Voltage	220/110V~

WET GRINDER GW1801



Max Disc Diameter	180mm
Rated Speed	1900r/min
Rated Input Power	1400W
Rated Voltage	220/110V~

MARBLE CUTTER M1251



Blade Diameter	125mm
Max Cutting Capacity	41mm
No-Load Speed	13000r/min
Rated Input Power	1320W
Rated Voltage	220V

MARBLE CUTTER M1801



Blade Diameter	180mm
Max Cutting Capacity	60mm
No-Load Speed	5000r/min
Rated Input Power	1400W
Rated Voltage	220V

MARBLE CUTTER K1101/K1101A



SOFT START

Max slot depth	30mm
Max slot width	(10-50)mm(adjustable)
No-Load Speed	11000r/min
Rated Input Power	1600W
Rated Voltage	220/110V~

ORBITAL SANDER S110



Pad Size	110x100mm
Orbits Frequency	14000r/min
Rated Input Power	160W
Rated Voltage	220/110V~
Rated Frequency	50/60Hz
N.W./G.W.	1.25/1.4kg

ORBITAL SANDER S93



Pad Size	93x185mm
Orbits Frequency	10000r/min
Rated Input Power	220W
Rated Voltage	220/110V~
Rated Frequency	50/60Hz
N.W./G.W.	1.7/1.95kg

ORBITAL SANDER S115



Pad Size	115x232mm
Orbits Frequency	10000r/min
Rated Input Power	240W
Rated Voltage	220/110V~
Rated Frequency	50/60Hz
N.W./G.W.	3.28/3.6kg

JIG SAW J553



Cutting Capacity	Steel 10mm Wood 85mm
No-Load Speed	500-3000r/min
Rated Input Power	580W
Rated Voltage	220/110V~

CIRCULAR SAW C1852



Blade Diameter	185mm
Max Cutting Capacity	55mm
No-Load Speed	4900r/min
Rated Input Power	1100W
Rated Voltage	220/110V~

CIRCULAR SAW C2351



Blade Diameter	235mm
Max Cutting Capacity	84mm
No-Load Speed	4100r/min
Rated Input Power	1400W
Rated Voltage	220/110V~

BLOWER JB40



Max Air Flow	2.8m ³ /min
No-Load Speed	16000r/min
Rated Input Power	600W
Rated Voltage	220/110V~
Rated Frequency	50/60Hz
N.W./G.W.	2.1/2.6kg

POLISH SANDER SP 1803



Pad Size	180mm
Rated Speed	500-3000r/min
Rated Input Power	1200W
Rated Voltage	220/110V~

DIAMOND DRILL DE180



Max Drilling Diameter	180mm
No-Load Speed	1800r/min
Rated Input Power	2000W
Rated Voltage	220/110V~

SLOTTER K1801



SOFT START

Max slot depth	60mm
Max slot width	(10-50)mm(adjustable)
No-Load Speed	5000r/min
Rated Input Power	1800W
Rated Voltage	220/110V~

ANGLE DRILL G2301A



Max Disc Diameter	230mm
Hole Diameter of Disc	22.2mm
Rated Speed	6500r/min
Rated Input Power	2400W
Rated Voltage	220/110V~

DIAMOND DRILL DE2001



Max Drilling Diameter	200mm
No-Load Speed	700r/min
Rated Input Power	1050W
Rated Voltage	220/110V~

ORBITAL SANDER T6A



Collet Chuck Diameter	6.35mm
No-Load Speed	30000r/min
Rated Input Power	350W
Rated Voltage	220/110V~
Rated Frequency	50/60Hz
N.W./G.W.	1.8/2.49kg

DEMOLITION HAMMER H0816



Max Impact Rate	2900/min
Rated Input Power	900W
Rated Voltage	220/110V~

HEAT GUN HG6001



Air mass flow	230/350 L/min
Temperature	50-480/50-600°C
Heat setting	Adjustable switch control band 2(M)
Rated Input Power	2000W
Rated Voltage	220/110V~
Rated Frequency	50/60Hz

CUT-OFF MACHINE 355



Blade Diameter	355mm
Max Cutting Capacity	100mm
Mid Stand Angle	0° -45°
No-Load Speed	3800r/min
Rated Input Power	2200W
Rated Voltage	220/110V~

POLISHER SANDER SP1804



MARBLE POLISHING

Pad Size	180mm
Rated Speed	5000r/min
Rated Input Power	1000W
Rated Voltage	220/110V~

CHAIN SAW CL405



Skid Length	405mm(16")
No-Load Speed	400m/min
Rated Input Power	1300W
Rated Voltage	220/110V~

BRUSH LESS TOOLS



BRUSHLESS HUMMER DRILL **HD26B**

Li-Ion battery	36v
Input power	680w
Speed	0-4650rpm
Capacity	26mm
Net weight	2.2kg

BRUSHLESS RENCH **B-IM350**

Li-Ion battery	36v
Input power	680w
Impact rate	0-3600min
Maximum torque	35N.m
Net weight	1.35kg



BRUSHLESS ANGLE GRINDER **B-AG115**

Li-Ion battery	36v
Input power	720w
Speed	0-11000rpm
Wheel Diameter	115mm
Net weight	1.35kg



BRUSHLESS POLISHER **B-AG115P**

Li-Ion battery	36v
Input power	720w
Speed	0-2800rpm
Wheel Diameter	115mm
Net weight	1.35kg



BRUSHLESS CHAIN SAW **B-CL 305**

Li-Ion battery	36v
Input power	720w
Speed	0-4500rpm
Guide bar length	305mm
Net weight	2.35kg



• PUQB60



H.max	38 m	Q.max	42 L/min
1~Mot.	V 220	Hz 50	2850 min ⁻¹
kW 0.37	HP 0.5	in 2.6 A	550 W.max
C. 10 μF	VL 450 V	I CL B	IP 44

• PUQB80



H.max	60 m	Q.max	50 L/min
1~Mot.	V 220	Hz 50	2850 min ⁻¹
kW 0.75	HP 1	in 4.8 A	1250 W.max
C. 10 μF	VL 450 V	I CL B	IP 44

• PUCPM130



H.max	23 m	Q.max	80L/min
1~Mot.	V 220	Hz 50	2850 min ⁻¹
kW 0.37HP	0.5in	2.6	550.max
C. 20 μF	VL. 450 V	I.CL. B	IP 44

• PUCPM158



H.max	35 m	Q.max	90 L/min
1~Mot.	V 220	Hz 50	2850 min ⁻¹
kW 0.75	HP 1	in 4.8 A	1250 W.max
C. 20 μF	VL. 450 V	I.CL. B	IP 44

• PUCPM2-52



H.max	52 m	Q.max	100 L/min
1~Mot.	V 220	Hz 50	2850 min ⁻¹
kW 1.1	HP 1.5	in 7.2 A	1650 W.max
C. 20 μF	VL. 450 V	I.CL. B	IP 44

• PUCPM2-60



H.max	60 m	Q.max	160in
1~Mot.	V 220	Hz 50	2850 min ⁻¹
kW 1.5	HP 2	in 9.7 A	2150 W.max
C. 20 μF	VL. 450 V	I.CL. B	IP 44

• PUCPM2-68



H.max	68 m	Q.max	180 L/min
1~Mot.	V 220	Hz 50	2850 min ⁻¹
kW 2.2	HP 3	in 10 A	3150 W.max
C. 20 μF	VL. 450 V	I.CL. B	IP 44

• PUNF129



H.max	22.5 m	Q.max	500 L/min
1~Mot.	V 220	Hz 50	2850 min ⁻¹
kW 1.5	HP 2	in 9.7 A	2150 W.max
C. 25 μF	VL. 450 V	I.CL. B	IP 44

• PUSR30



Q	3 m ³ /h	H	23 m
U	1X220	V~	Hmax 29 m
In	3.2 A	50 Hz	Isolation Class B
P ₂	550 W	p/t	bar/°C _{MAX}

• PUSR50



Q	5 m ³ /h	H	33 m
U	1X220	V~	Hmax 50 m
In	5.8 A	50 Hz	Isolation Class B
P ₂	1100 W	p/t	bar/°C _{MAX}

PUQ12 • BOOSTING PUMP

PUAC • AUTOMATIC CONTROLLER

- VOLTAGE | 220V
- POWER | 120W
- H MAX | 8 M
- Q MAX | 30L/MIN

Equipped with Shielded Motor,

No maintenance,

Low noise, Low Power,

suitable for all kind of

shower equipments,

home water tower,

indoor fountains,

garden irrigation.



- ▶ Starting Pressure | 1.5bar
- ▶ Max Allowable Pressure | 10bar
- ▶ Rated Voltage | 220V



SUBMERSIBLE PUMP

• PUS4

- Max. Head | 57m
- Capacity | 100 litres/min
- Volt | 220V / 750W



• PUQS5-5

- Max. Head | 29m
- Capacity | 100-900 litres/min
- Volt | 380V / 5.5HP



• PUS8

- Max. Head | 77m
- Capacity | 100 litres/min
- Volt | 220V / 1100W



• PUQS12-5

- Max. Head | 70m
- Capacity | 100-900 litres/min
- Volt | 380V / 12.5HP



• PUQ370

► Cast Iron. used to supply & drain water from well, in construction, mining, spray, fountain

- Max.Head | 9m
- Cap. Max | 10m³/h
- Volt | 220V / 0.37KW



• PUQ5

Complete stainless steel pumps with rust free, designed for transferring seawater & common corrosive medium similar to water in density & viscosity

- Max.Head | 11m
- Cap. Max | 8m³/h
- Volt | 220V / 0.37KW



• PUQ10

► Cast Iron. used to supply & drain water from well, in construction, mining, spray, fountain

- Max. Head | 15m
- Cap. Max | 25m³/h
- Volt | 220V / 1.1KW
- Discharge size | 2"
- N.W | 34kg



• PUQB1-5

► Stainless Steel pumps. Provided with a grinding device capable of grinding particles & long fibers. For use in pumping sewage & home wastewater.

- Cord | 10m
- Max.Head | 11.5m
- Cap. Max | 22m³/h
- Volt | 220V / 1.5KW



• PUQ1100

- ▶ Provided with a grinding device capable of grinding particles & long fibers.
- ▶ Use in pumping sewage & home wastewater.

- Cord | 10m
- Head | 20 - 27m
- Cap. | 12 - 14m³/h
- Volt | 220 - 380V
- Power | 1.1 - 2.2KW
- Discharge size | 2"
- 2 Impeller



• PUQ2200

• PUQ1500

- ▶ Provided with a grinding device capable of grinding particles & long fibers.

- Cord | 10m
- Head | 22m
- Cap. Max | 14.4m³/h
- Volt | 220V
- Power | 1.5/KW
- Discharge size | 2"



• PUQ15-30

- Cord | 10m
- Head | 36 - 17m
- Cap | 22 - 65m³/h
- Volt | 380V - 4KW
- N.W | 60kg
- Discharge size | 2 - 3.5"



• PUQ50

• PUQX1 • PUQX2

- Cord | 10m
- Head | 15.5 - 27m
- Cap | 45 - 72m³/h
- Volt | 220 - 380V
- Power | 1.5 - 3.7KW
- N.W | 60kg
- Discharge size | 2 - 4"



• PUQ20

- Cord | 10m
- Head | 47m
- Cap | 20/40m³/h
- Volt | 380V / 7.5KW
- N.W | 85kg
- Discharge size | 3"



• PUQ145

- Cord | 10m
- Head | 18 m
- Cap | 145/220m³/h
- Volt | 380V / 7.5KW
- N.W | 170kg
- Discharge size | 6"



THM MANUAL THREADER

- Thread from ½ "-2"
- Easily operate



SQ30 PORTABLE MACHINE

- Strong power | 1200W
- Single phase motor, 24rpm no load
- Light & Compact
- Thread from ½ "-2"
- Easily operate



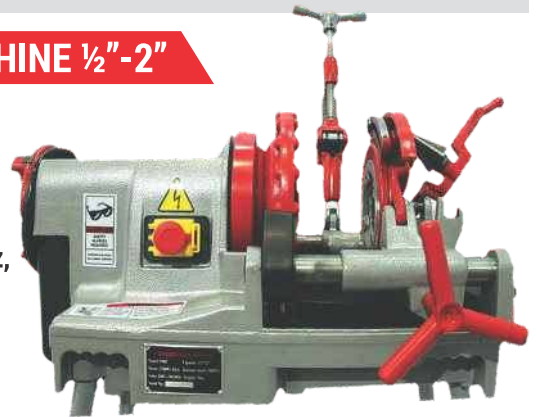
TH50 TH50R THREADING MACHINE ½"-2"

- Suitable for right 1/2"-2" pipe threading performs cutting, reaming & threading operations in a minimum time.
- 900W | 220v, all-purpose motor.
- Induction motor : 28rpm no load.
- Easily replaceable self-clamping jaws supplied with manual Die Head 1/2"-2".
- Includes | Automatic Die Head 1/2"-2" right BSPT Dies sets (1/2"-3/4") & (1"-2"), 3 legs, 1 cutting oil, 1 cutting oil canister & 1 mounting tools
- G.W./N.W. | 60/50Kg



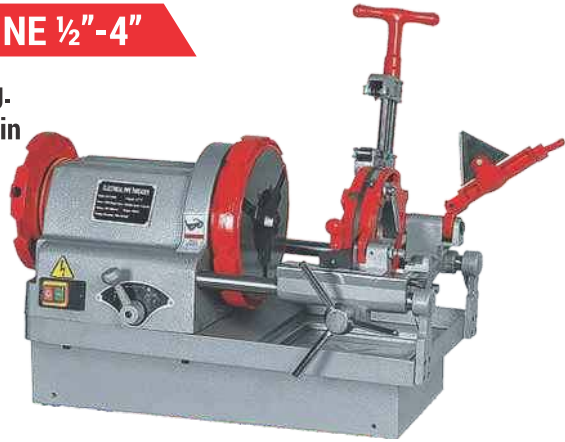
TH50C THREADING MACHINE ½"-2"

- Self-Opening Die Head & 1/8" -2", 5 flute cone Reamer Heavy-duty proven performance Suitable for right BSPT (1/2"-2"), pipe threading.
- Power | 1500W, 220V universal 50Hz, 38rpm self-centering, full-floating
- Cutter Oiling System | Through the head with integral oil reservoir
- G.W./N.W. | 90/75Kg



TH100 THREADING MACHINE 1/2"-4"

- Suitable for right 1/2"-4 pipe threading.
- Powered by a quiet, 2-speed, 8r-24r/min
- Induction motor : 900w | 220v.
- Supplied with a 1/2"-2".
- Die Head & a 2.1/2"-4" Die Head, right BSPT Dies sets (1/2"-3/4"), (1"-2") & (2.1/2"-4"), 4 legs,
- 1 cutting oil canister & 1 set of mounting tools.
- G.W./N.W | 160Kg/140Kg



TH150 THREADING MACHINE 2 1/2"-6"

- This ultimate in 6" is specifically designed for 150mm pipes. Automatic lubrication through the head directly on the Dies.
- Powered by a quiet, 2-speed 10-23r/min.
- Oil pump for the mechanical system (gear box) with oil flow rate selector according to size.
- Supplied with a 2.1/2"-6" Die Head, right BSPT Dies sets (2.1/2"-4") & (5"-6"), 4 legs, 1 cutting oil canister & 1 set of mounting tools.
- G.W./N.W. | 240Kg/200Kg



MCBT6 TRI-STAND CHAIN VISE TYPE

- Aluminum base, light and strong
- Special forged clamping jaw
- Capacity pipes | 1/2"-6"
- N.W. | 20Kg



THD PIPE DRILL

- Hole Cutting Pipe Drill
 - Power | 1000W
 - Volt | 220V
- The hole Pipe cutter is designed to cut holes up to 114 mm into steel pipe.



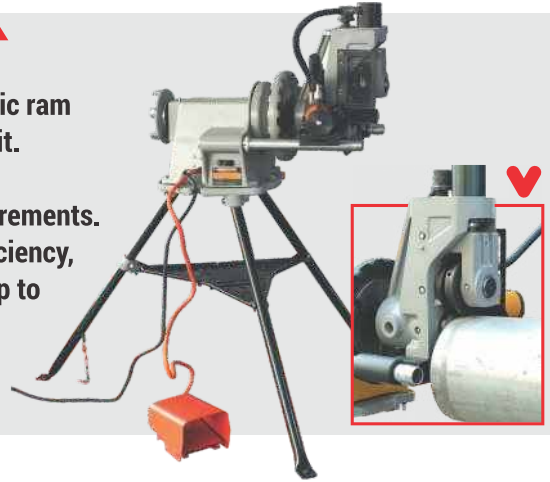
HRG ROLL GROOVER

- The HRG Hydraulic Roll Groover is capable of grooving up to 12"
- All in One design of drive shaft for convenient replacement changing.
- ▶ Motor | 750w induction, 220v.
- ▶ Speed | 24RPM
- ▶ Net Weight | 140 KG
- ▶ Grooving Capacity (roll set) |
 - 2 1/2"-6" Schedule 10/40 steel, stainless steel pipe.
 - 8"-12 Schedule 10 steel, stainless steel pipe.



HRGY ROLL GROOVER

- The HRGY Hydraulic Roll Groover features a powerful 10 ton hydraulic ram in a compact, easy to transport unit.
- With one man set-up & operation, the ideal groover for job-siter equipments.
- Designed to provide maximum efficiency, the HRGY is capable of grooving up to 12" schedule 10 & 6" Schedule 40 standard wall pipes.
- ▶ Net Weight | 95KG



PPC PIPE CUTTER

- Cutting capacity | 2 1/2"-12" power pipe cutter, 220V.
 - Motor | 750W, induction type
 - Speed | 24RPM
- The operator controls the feeding rate by pumping the hydraulic foot pump during the operation with pipe support
- ▶ Net Weight | 135Kg



PCGQ75 PIPE CLEANING

- Suitable for all kinds of indoor & outdoor pipe cleaning
- Easy to transport & use from Φ 8mm cable to 16mm,
- Cleaning capacity from Φ 20-75 to Φ 32-100mm
- Max length | 4.3m to 30m
- Motor | 250w induction, 220v. reversible
- Speed 400RPM for pipes | Φ 20-100mm
- Max working length | 30m



PCGQ150 PIPE CLEANING

- Suitable for all kinds of indoor & outdoor pipe cleaning
- Easy to transport & use from Φ 8mm cable to 22mm,
- Cleaning capacity from Φ 20-75 to Φ 50-200mm
- Max length | 4.3m to 30m
- Motor | 370w induction, 220v. reversible
- Speed 400RPM for pipes | Φ 20-100mm
- Max working length | 30m
- Total N.W | 40Kg



PCGD 23

- Pipe & Drain inspection System
- Orange monitor 7 inch
- Power 14W, 12V DC with backup battery
- 23mm stainless camera/ Video recording
- Professional sapphire glass for camera lens
- Yellow cable in length 20m fiberglass
- Stainless steel stand support
- Waterproof ABS case



PCGD28

- Pipe & Drain inspection System
- Black monitor 8 inch
- Power 14W, 12V DC with backup battery
- 28mm stainless camera head
- Video recording with self-leveling built in 512hz
- Transmitter 35m cable in length with meter counter
- Stainless steel stand support
- Waterproof ABS case



PUY60 ELECTRIC TESTING PRESSURE PUMP

- Testing Range | 0-60bar
- Connections | 1/2"
- Water Flow | 2.9L/min
- Power | 250w induction type
- N.W | 12Kg



PUY60A

- Testing Range | 0-60bar
- Connections | 1/2"
- Water flow | 6L/min
- Power | 400W induction type
- N.W | 18KG

PUH TESTING PRESSURE PUMP

- For testing of leaks in installations, especially for use in heating, compressed air, refrigeration systems, oil installations, sprinkler systems & other small bore pipe applications

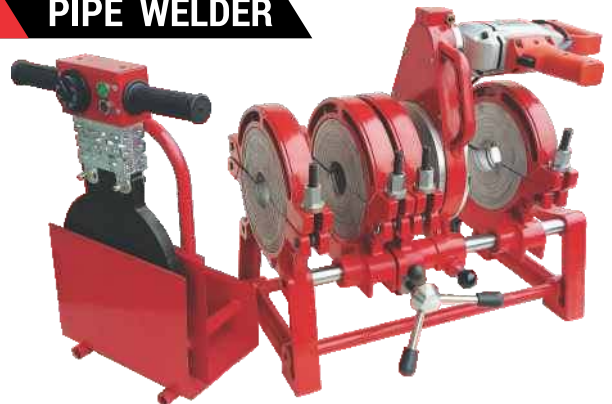
- ▶ Testing Range | 0-60bar
- ▶ Tank Capacity | 12L
- ▶ Cooper piston
- ▶ Volume / Stroke | $\approx 0.45\text{ml}$
- ▶ Connections | 1/2"



PW PW160 PW250 PIPE WELDER



POWER | 2000W
 VOLTAGE | 220V / 50 HZ
 CAPACITY | 20-40mm



POWER | 2300W • 2830W
 CAPACITY | 63-160mm • 90-250mm

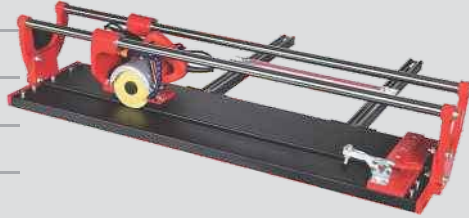
MANUAL TILE CUTTER

CODE	SCS80M	SCS100M	SCS1200M
MAX CUTTING	800mm	1000mm	1200mm
CUTTING THICKNESS	15mm	15mm	15mm



ELECTRICAL TILE CUTTER

CODE	SCS1000S	SCS1200S
SAW BLADE	115mm	115mm
SPEED	1300r/min	1300r/min
POWER	1500W	1500W
VOLTAGE	220V/50HZ	220V/50HZ



ELECTRICAL TILE CUTTER

CODE	SCS1000	SCS1200
SAW BLADE	300mm	300mm
SPEED	1300r/min	1300r/min
POWER	2200W	2200W
VOLTAGE	220V/50HZ	220V/50HZ



CUTTER BLOC CONCRETE

CODE	SCS550
SAW BLADE	600mm
POWER	5500W
VOLTAGE	380V/50HZ



MIXER MACHINE

CODE	M 71
CAPACITY	60L
POWER	370W
VOLTAGE	220V/50HZ



SCRUBBER MACHINE WITH CABLE

FWC (CABLE TYPE)

FLOOR MOTOR	1200W
WATER SUCKER MOTOR	400W
VOLTAGE / HZ	220V/50HZ
CLEAN WATER TANK CAPACITY	33L
BASE PLATE DIAMETER	18 inch
REVOLUTION RAT	155rpm
MAX WORKING EFFICIENCY	1600m ² /h
WEIGHT	76kg



FWB (BATTERY TYPE)

FLOOR MOTOR	550W
WATER SUCKER MOTOR	400W
VOLTAGE / HZ	24VDC
CLEAN WATER TANK CAPACITY	40L
BASE PLATE DIAMETER	20 inch
REVOLUTION RAT	155rpm
MAX WORKING EFFICIENCY	1792m ² /h
WORKING TIME	4 Hours
WEIGHT	130kg



FWBS (BATTERY TYPE) FWCS (CABLE TYPE)

FLOOR MOTOR	550W	600W
WATER SUCKER MOTOR	300W	400W
VOLTAGE / HZ	24 VDC	220V/50HZ
CLEAN WATER TANK CAPACITY	22L	22L
BASE PLATE DIAMETER	18 inch	18 inch
REVOLUTION RAT	155rpm	155rpm
MAX WORKING EFFICIENCY	1450m ² /h	1450m ² /h
WORKING TIME	2 hours	
WEIGHT	103kg	56kg



- 1 ▶ Adjustable water sucker can touch the floor tightly & work efficiently.
- 2 ▶ Manipulation is quite easy with all switches on the operating handle.
- 3 ▶ Joy stick can be stacked, split-style water tank design, transport more convenient.
- 4 ▶ Suitable for all business environment ground.

MULTIFUNCTION BRUSHING MACHINE

FW13

POWER	750W
VOLTAGE / HZ	220V/50Hz
SPEED	190rpm
WEIGHT	28 kg



DISK WEIGHTING RENEWING MACHINE

FW04

POWER	1500W
VOLTAGE / HZ	220V/50Hz
SPEED	154pm
BASE PLATE DIAMETER	17 inch
WEIGHT	68 kg



FW220

POWER	2200W
VOLTAGE / HZ	220V/50Hz
SPEED	150pm
BASE PLATE DIAMETER	18 inch
WEIGHT	85 kg



- ▶ It is super high power air-cooling motor & the double capacitor design allow safer operation.
- ▶ It provides a strong power output.
- ▶ It has Multiple Functions such as carpet and floor cleaning, wax removing, low speed polishing, floor crystal treatment & renewing.
- ▶ Accessories : Main body, handle, water tank, pad holder, hard brush & soft brush.



FWG180 FWG180T

MOTOR TYPE	Single Phase Electric Motor
POWER OUTPUT	1.5 kw (2HP)
VOLTAGE / HZ	220V / 50 HZ
REVOLUTION RAT	1410 r/min
WORKING WEIGHT	50 kg

- ▶ It can be easily taken by one man & suitable for housetop jobs.
- ▶ Power source is electronic motor, clean & long working time.
- ▶ Anti-vibration rubber is applied for shock absorbtion & long service life.
- ▶ Reserved place to industrial vacuum cleaner for a clean finishing surface.
- ▶ Easy operation & easy motor control, the handle can be adjusted.



DIAMOND DISC
180MM

FWG250

MOTOR TYPE	Single Phase Electric Motor
POWER OUTPUT	2.2 kw (3HP)
VOLTAGE / HZ	220V / 50HZ
REVOLUTION RAT	1410 r/min
WORKING WEIGHT	70 kg

- 1 ▶ Diamond cup wheel, durable & relieable for concrete grinding.
- 2 ▶ Optional grinding size | Three 4 inches or one 10 inches cup wheel.
- 3 ▶ Power source is optional, Electric motor
- 4 ▶ Rotated handle is set for cup wheel height tuning.
- 5 ▶ Adjustable long handle, effort saving and easy operation.
- 6 ▶ Reserved place for industrial vacuum cleaner.



DIAMOND DISC
250MM

FWG450 FWG450-3

POWER OUTPUT	3 kw (4HP)
VOLTAGE	220 • 380V
FRQUENCY	50HZ
REVOLUTION RAT	1410 r/min
WORKING WEIGHT	95 kg

- 1 ▶ Diamond cup wheel, durable & relieable for concrete grinding
- 2 ▶ Optional grinding size | six 4 inches or three 7 inches cup wheel.
- 3 ▶ Power source is optional, Electric motor.
- 4 ▶ Rotated handle is set for cup wheel height tuning.
- 5 ▶ Adjustable long handle, effort saving & easy operation.
- 6 ▶ Reserved place for industrial vacuum cleaner.



DIAMOND DISC
450MM

FLOOR STRIPPER REMOVE CONCRETE EPOXY

FWG290

POWER OUTPUT	0.75 kw (3HP)
VOLTAGE / HZ	220v. / 50HZ
REVOLUTION RAT	1410 r/min
WORKING WEIGHT	86 kg



- ▶ Floor Stripper remove Concrete Epoxy CF Tiles.
- ▶ Electric Floor Strippers remove floor coverings from Concrete & Wood Surfaces Carpeting, Hardwood, Rubber Flooring,
- ▶ Remove up to 200sq.ft/h of vinyl.
- ▶ Retractable Handle for easy Transport & Storage.
- ▶ Quick release Pin Angle Adjustment.

DIAMOND GRINDING DISK



DIAMOND BRUSH



STAINLESS STEEL DRUM WATER & DUST COLLECTOR

VC15 VC30

POWER OUTPUT	1000W
VOLTAGE / HZ	220V / 50HZ
FUNCTION	WET & DRY
HOSE DIAMETER	40MM
CAPACITY	15LITER / 30LITER

- ▶ The stainless steel tank is strong & durable
- ▶ With a powerful lower-noise motor, the vacuum cleaner has a specially strong suction



VC60 VC80

POWER OUTPUT	2X1000W / 3X1000W
VOLTAGE / HZ	220V / 50HZ
FUNCTION	WET & DRY
HOSE DIAMETER	40MM
CAPACITY	60LITER / 80LITER



CLEANING TOOLS



VENTILATION FAN

MODEL	VFM30	VFM50
POWER OUTPUT	500W	1100W
VOLTAGE / HZ	220v /50HZ	220v /50HZ
FLOW RATE	65m3/min	150m3/min
DIAMETER	300mm (12inch)	500mm (20inch)
SPEED	2800r/min	1400r/min



- ▶ It's special manufactured for underground
Used for fire fighting, piping construction & in other violent working situation for ventilation.

FLEXIBLE DUTCH HOSE

MODEL VFH30-5	(30cm x 500cm)
MODEL VFH30-10	(30cm x 1000cm)
MODEL VFH50-5	(50cm x 500cm)
MODEL VFH50-10	(50cm x 1000cm)



- ▶ PVC flexible ventilation effective network folder cloth tube for the body, high-carbon steel, wear-resistant tape for the skeleton.
- ▶ Easy access, easy to carry & fire-retardant, acid, high temperature & so on.

CENTRIFUGAL FAN

MODEL	VFC1400	VFC2200	VFC2350
POWER OUTPUT	750W	2200W	2200W
VOLTAGE / HZ	220V	220v /50HZ	220v /50HZ
FLOW RATE	2300 m3/min	4400 m3/min	5613 m3/min
DIAMETER	Input 8" out 6"	Input & out 10"	Input & out 10"
SPEED	1400r/min	1420r/min	1420r/min



- ▶ Multi-Wings centrifugal fan with high efficiency, low rotation, low noise.
- ▶ It's suitable ventilation & oil air expiration of hotel, restaurant, kitchen & air condition systems, also used ventilation of mineral factory.
- ▶ VF30-500 | Ventilation fan 220V 500W 70m3/min 300mm 2800 r/min
- ▶ VF30-180 | Ventilation fan 220V 180W 45m3/min 300mm
- ▶ VF25-300 | Ventilation fan 220V 55m3/min 250mm 300W 2800r/min
- ▶ VF20-180 | Ventilation Fan 220V 180W 35m3/min 200mm 2800 r/min
- ▶ VFX20 | Ventilation fan 220V 180W 200mm 25m3/min



VENTILATION

PRESSURE WASHER PUMP

PUW1500

- ▶ POWER | 1500W
- ▶ VOLTAGE | 220V
- ▶ PRESSURE | 120BAR



PUW1600

- ▶ POWER | 1600W
- ▶ VOLTAGE | 220V
- ▶ PRESSURE | 90/120BAR, 7L/MIN



PUW2500

- ▶ POWER | 2500W
- ▶ VOLTAGE | 220V
- ▶ PRESSURE | 160BAR, 7L/MIN



PUW2200

- ▶ POWER | 2200W
- ▶ VOLTAGE | 220V
- ▶ PRESSURE | 140BAR, 7.3L/MIN



PUW248

- ▶ POWER | 7500W
- ▶ VOLTAGE | 380V
- ▶ PRESSURE | 248BAR, 16.4L/MIN



PUWD240

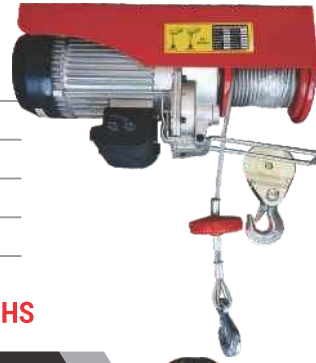
- ▶ POWER | DIESEL ENGINE 10HP
- ▶ PRESSURE | 240BAR, 20.7L/MIN



ELECTRICAL WINCH

MODEL	WPA400A	WPA600A
POWER OUTPUT	980W	1800W
VOLTAGE / HZ	220v /50HZ	220v /50HZ
RATED CAPACITY	200/400Kg	600/1200Kg
LIFTING SPEED	10/5 m/min	10/5 m/min
LIFTING HEIGHT	18/9 m	18/9 m

► **European Standard Attestation CE,GS,EMC & RoHS**



ELECTRIC TROLLEY ELECTRICAL WINCH

MODEL	WPA400M	WPA600M
POWER OUTPUT	980W	1800W
VOLTAGE / HZ	220v /50HZ	220v /50HZ
RATED CAPACITY	200/400Kg	600/1200Kg
LIFTING SPEED	10/5 m/min	10/5 m/min
LIFTING HEIGHT	18/9 m	18/9 m

► **Adopt urgent stop switch and reinforced breaking switch with position limit.**



SUSPENDING ELECTRIC HOIST

MODEL	WPA250
POWER OUTPUT	1200W
VOLTAGE / HZ	220v /50HZ
RATED CAPACITY	250Kg
LIFTING SPEED	12 m/min
LIFTING HEIGHT	20m



ROUND CHAIN ELECTRIC HOIST

MODEL	W1T	W2T	W3T
POWER OUTPUT	1.5KW	1.5KW	1.5KW
VOLTAGE / HZ	220V/50HZ	380V/50HZ	380V /50HZ
RATED CAPACITY	1000Kg	2000Kg	3000Kg
LIFTING SPEED	3.6 m/min	3.6 m/min	2.4 m/min
LIFTING HEIGHT	3 m	3 m	3 m



MOVING CHAIN ELECTRIC HOIST

MODEL	W2TM	W3TM
POWER OUTPUT	1.5KW	1.5KW
VOLTAGE / HZ	380V/50HZ	380V /50HZ
RATED CAPACITY	2000Kg	3000Kg
LIFTING SPEED	3.6 m/min	2.4 m/min
LIFTING HEIGHT	3 m	3 m



VIBE

VIBRATOR ELECTRIC MOTOR

- ▶ POWER | 1.5KW
- ▶ VOLTAGE | 220V



VIBGR

VIBRATOR GASOLINE ROBIN ENGINE

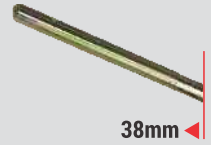
- ▶ POWER: 5HP



VIB38

CONCRETE VIBRATOR POKER
(JAPAN BEARING)

- ▶ THICKNESS | 38MM
- ▶ LENGTH | 6M



PT100

POWER TROWEL WITH ROBIN EY-20

- ▶ TROWEL | 90CM



PT60

POWER TROWEL WITH ROBIN EY-20

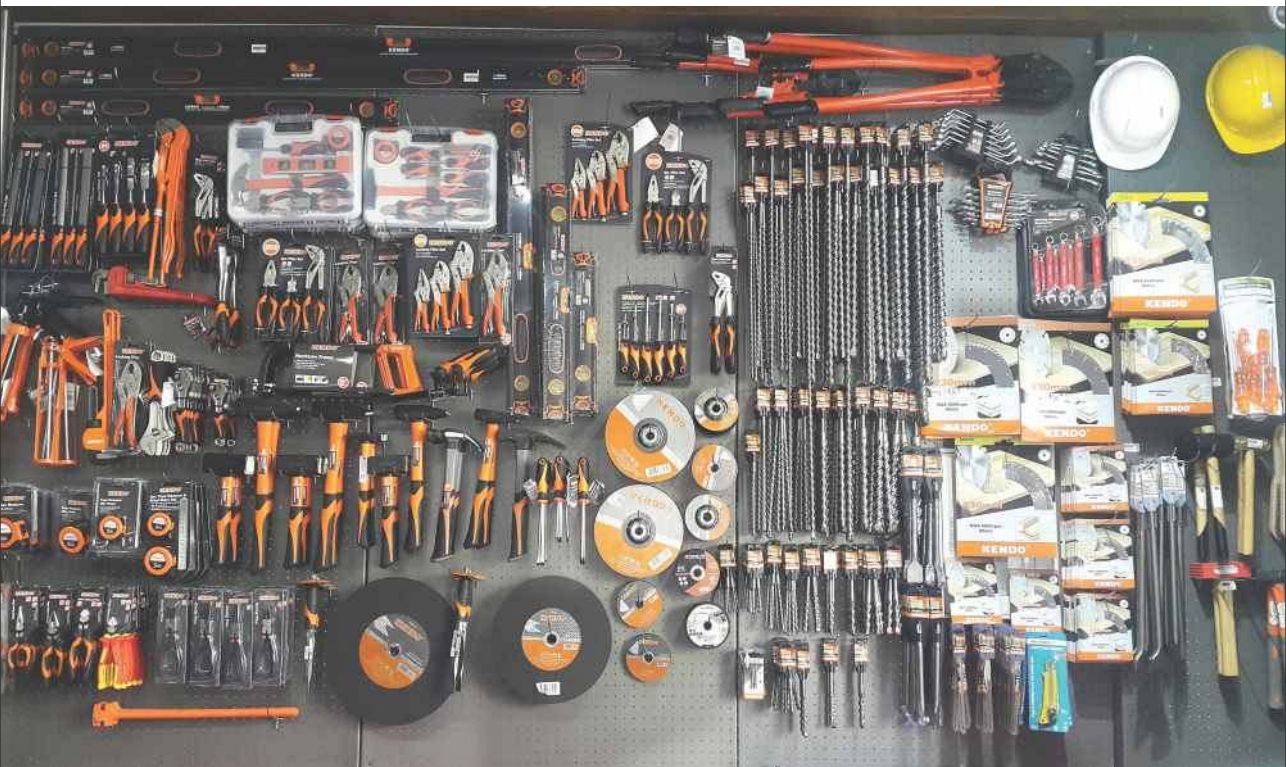
- ▶ TROWEL | 60CM

FWS

SURFACE FINISHING SCREED
WITH HONDA GX35 1.5HP

- ▶ ALUMINIUM BLADE | 2M





KENDO®

► No matter what type of project you're working on, we have the hardware tools you need at a competitive price to get the job done.

- Level | 40Ccm - 200cm
- Discs | stone, Metal, Stainless, Ceramic, Wood
 - Bits | 6mm - 28mm
- Meters | 5m - 7.5m - 10m
- Gun | Silicone - Epoxy
- Pipe Wrench | 14" - 48"
- Machinist / Stoning Hammer
 - Tools Set
- Point / Flat Chisel
 - Saw Frame
- Bolt Cutters 18" - 42"
- Screwdriver Set "Pliers" Helmet



LM50 50M LASER DISTANCE METER



- MEASUREMENT RANGE | 0.1m-50m
- MEASUREMENT ACCURACY | +/-2mm
- LASER TYPE | 635nm | p<1mW
- LASER CLASS | 2
- PROTECTION CLASS | IP54
- BATTERY LIFE | 5000h
- BATTERY | 4x AAA Alkaline Battery
- WEIGHT | 155gr

LL05

- ▶ Laser level 5 red lines for indoor
- ▶ Rechargeable Li-ion Battery 3AA



LL02G

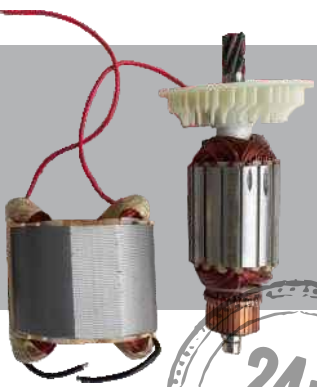
- ▶ Laser level 2 green lines for indoor & outdoor
- ▶ Rechargeable Li-ion Battery 3AA



MAINTENANCE



► Our purpose is to offer you best maintenance service at a very good price to assure you the long life of your machines.



► ALL THE ORIGINAL SPARE PARTS & ACCESSORIES ARE AVAILABLE.

MACHINERY®

INDUSTRIAL RANGE

e.mail:machinerylb@gmail.com
www.coring.us • www.machinery.ws

► find us @   

Jounieh Highway • Nahman Center • Near Casino du Liban
T/F +961 9 853 833 | 09 856 220 • M. +961 70 221474



Bouchrieh • Saloumi Highway • Queen's Plaza Center
T/F +961 1 24 24 33 • M. +961 71 24 24 33

