

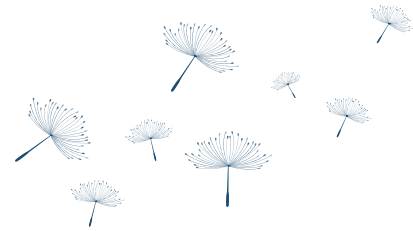
Annual Report 2021

"All the flowers of all the tomorrows
are in the seeds of today."



 **Omega
Home Network**

2021 DEAR FRIENDS AND COLLEAGUES,



"The greatness of a community is most accurately measured by the compassionate actions of its members." - Coretta Scott King

The journey from inspiration to vision to action is filled with determination, uncertainty, tenacity, fear and excitement. And, the rewards can be immense. Founding, establishing and operating a community home for people who are dying is not for the faint of heart, but if there's one thing I've learned – the people in this work are full of heart!

End-of-life homes are known by different names: Comfort Care Homes, Homes for the Dying and Social Model Hospice Homes. Varying in size, appearance and internal policies, and located in multiple states across the country, we share a common foundation and philosophy. We are bound together by dedication to our mission of compassionate hospitality for people in need who are dying. This is a community of professionals who give generously to foster the growth and development of a mission we cherish.

Through networking, we share our practices and policies as we mentor, advise, affirm and support; working together to provide a grass-roots solution to the caregiver crisis in end-of-life care.

If you're not currently a member, we invite you to become a part of the Omega Home Network family. Whether you are a seasoned home or an idea looking to grow, Omega Home Network offers you connections and resources to grow and flourish.



All my best,

President of the Board of Directors
Omega Home Network



OUR MISSION

Omega Home Network is a non-profit national membership organization that promotes the development and expansion of community homes for dying people. Through information sharing, consultation and educational offerings, we provide direct assistance to those developing and operating homes in their communities.

OUR VISION

We strongly believe in sharing our model so that every willing and able community can have an Omega Home. To those who want to provide the experience of home and extended family to people at the end of life, the Network offers an information bridge to making that happen in their own communities.

MEMBER SERVICES



MENTORING

Omega Home Network administration provided 33 hours of direct mentoring for members with topics ranging from floor plans to fundraising, data gathering to operations.

CONNECT

The COVID-19 Response webinars morphed into CONNECT, the monthly virtual networking session. An average of 12 people join each month to share ideas and expertise.

WEBSITE REDESIGN

We added new features to our website: newsletter sign-up, featured Omega Homes and member pages that provide contact info and links to websites and virtual tours if applicable.

MEMBERS-ONLY FORUM

The Forum is the best way to share information with the entire Network. There were 210 posts created, 1,300 user visits and 15,800 pageviews. Members can log in through the website.

VIRTUAL CONFERENCE

The 2021 OHN Annual Conference was held virtually. There were 77 attendees and 18 educational sessions. We were even able to incorporate five virtual home tours.

SPECIAL INTEREST GROUPS

With continued inquiries about which homes care for people who are homeless, we kicked off our first special interest group with this focus. We meet virtually the first Friday of each month.

TRAINING RESOURCES

Available resources: an annually updated OHN Start-up Manual, complete PowerPoint presentation, journal articles, brochures, a medical hospice comparison tool and more.

NEW MEMBERSHIP

16 new members joined the Network. Of those, three are open homes and 13 are visionaries or developing projects. These members represent six new states.

192

bedrooms
available

2,550

people who are
terminally ill served

14

average length
of stay (days)

331

average
monthly admissions

220

average
monthly deaths

363

medical hospice
collaborations

483

people
employed

12.7M

philanthropic
dollars raised

2,552

people
volunteering

NATIONAL IMPACT



The amounts shown are based on the most recent fiscal year for 88% of members operating open homes.

A FINANCIAL SNAPSHOT



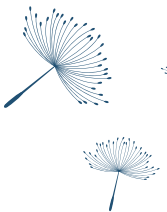
ASHLEY TACK OHN TREASURER

We are incredibly grateful for the Network's ability to grow during a global pandemic and continue to connect new projects and homes to resources on how to best serve and support their local communities. We continue to be grateful, as well, for the sponsorships from individuals and corporations that allowed the Network to host our first virtual conference, so we could stay connected and educating during unprecedented times. The network continues to utilize 100% of its funding to connect, educate and support homes in many different phases.

Our fiscal status, despite the rough year for the

membership continued to grow. In 2021, we added 16 new members. The real affirmation that the Network has received during the 2021 year is the Network is a great resource nationally and allows homes experiencing challenges the hope of holding on to their dream.

We want to take the time to personally thank each of you for being a part of the Network and being a part of the unique and amazing work we each do in our local communities. Included in this report are highlights from our financial statements. A complete copy of reports are available upon request. If you have any questions, please contact Ashley Tack, Treasurer, atack@marioncs.org.



ASSETS, LIABILITIES & NET ASSETS

| | 2021 | 2020 |
|-------------|----------|----------|
| Assets | \$80,438 | \$58,199 |
| Liabilities | - | - |
| Net Assets | \$80,438 | \$58,199 |

NET ASSETS

| | 2021 | 2020 |
|----------------------------|----------|----------|
| Without Donor Restrictions | \$78,788 | \$57,899 |
| With Donor Restrictions | \$1,650 | \$300 |
| Total Net Assets | \$80,438 | \$58,199 |

IN-KIND SUPPORT

With no paid staff, the Omega Home Network receives donated in-kind services from Clarehouse in Tulsa, OK. OHN day-to-day operations are managed by the Clarehouse staff. In 2021, this donation of time and expertise was tracked, with 493 hours logged at a value of \$14,738. OHN is grateful to the generous outreach of Clarehouse that supports Network operations.

\$14,738

fair market value
of donated service

REVENUES

| | 2021 | 2020 |
|-------------------------|----------|----------|
| Contributions & Grants | \$17,465 | \$10,373 |
| Membership Dues | \$18,600 | \$9,700 |
| Conference Sponsorship | \$5,260 | - |
| Conference Registration | \$9,925 | - |
| Total Revenues | \$51,250 | \$20,073 |

EXPENSES

| | 2021 | 2020 |
|---------------------|----------|---------|
| Member Services | \$2,382 | \$1,818 |
| Administration | \$1,698 | \$1,153 |
| Conference Expenses | \$24,931 | - |
| Total Expenses | \$29,011 | \$2,971 |

The amounts shown are based on fiscal years that ended on December 31, 2020 and 2021.
Omega Home Network is a 501(c)(3) public charity.

MEMBERSHIP BENEFITS



TRAINING RESOURCES

The Network accesses the broadest base of model-specific educational tools and resources available. Network membership ensures easy access to the most up-to-date information and best practice for end-of-life care homes.



ONLINE FORUM ACCESS

Members of the Network support each other through sharing information and resources. The Forum is a place to share examples and ask and answer questions about creating and running a community home for people who are dying.



PEER SUPPORT

The best resource for homes for the dying is the expertise of our members who are willing to share their advice, experience and knowledge in order to help with the development of this model for end-of-life care.



MENTORING

Members embrace the “Pay It Forward” philosophy, sharing expertise so that new projects do not have to re-invent the wheel. One-on-one mentoring is available by phone, email and in person when possible.



AFFILIATION

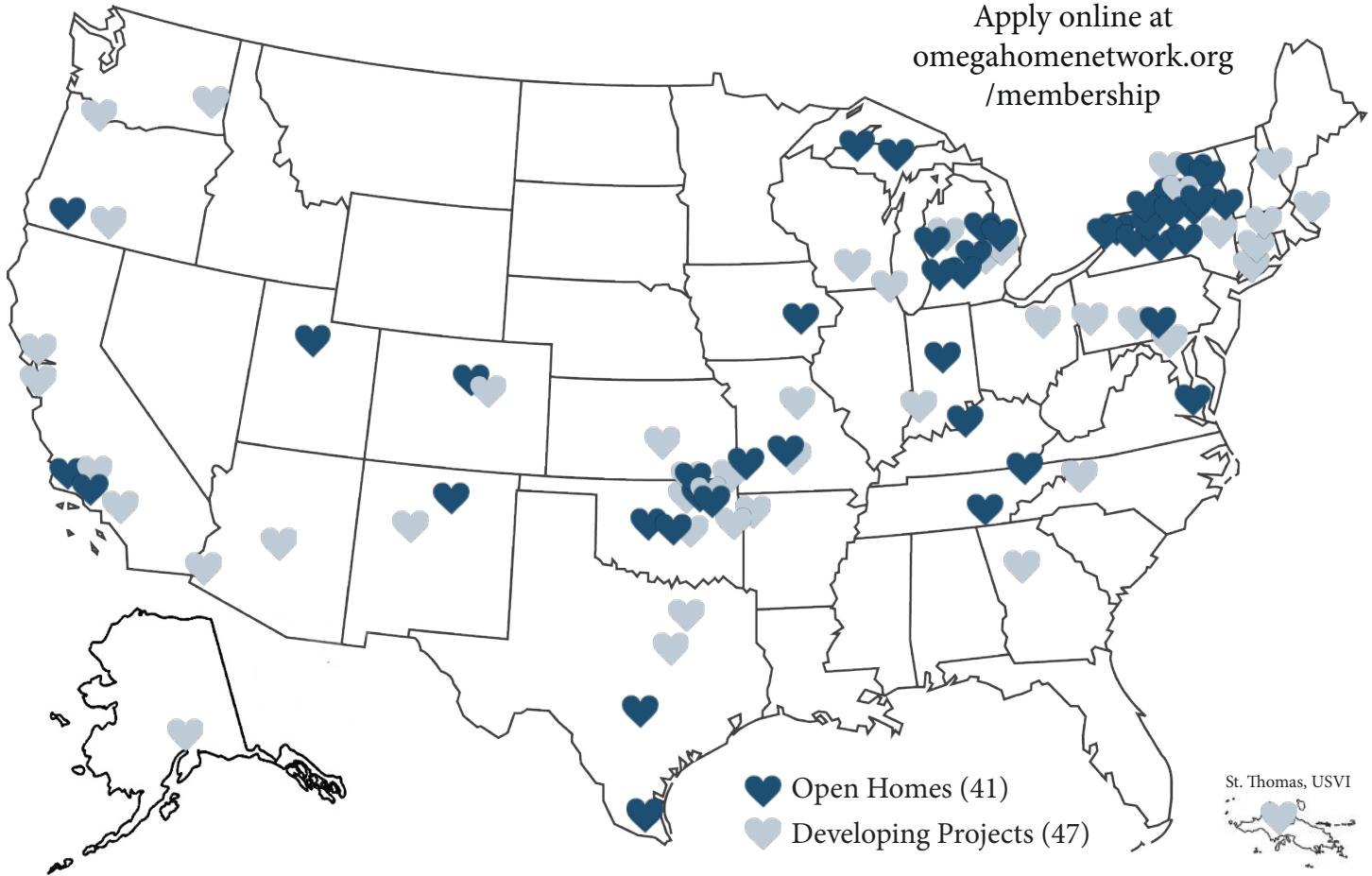
Membership connects you with peers and leaders in a growing movement that offers a viable solution to the caregiver crisis in end-of-life care. Mutual inspiration fuels our momentum!



DISCOUNTED RATES

Members receive discounted rates for the annual Omega Home Network Conference, a gathering with the purpose of sharing and learning how to create and sustain a community home for the dying.

Apply online at
omegahomenetwork.org/membership



HOME MEMBER

Open to operating non-profit community homes for end-of-life care. Unlimited individual participation.
Annual cost of \$500

15 current members

ASSOCIATE MEMBER

Open to developing projects and incorporated organizations working to establish a home and homes that have been open for five years or less. Unlimited individual participation.
Annual cost of \$250

44 current members

INDIVIDUAL MEMBER

Open to individuals exploring the model.
Annual cost of \$100

29 current members



Mary Thorsby
Executive Director
ABODE
San Antonio, TX

ABODE Contemplative Care for the Dying welcomes folks in their last three months, weeks and even days to its beautiful home on Post Oak Lane in San Antonio. Guests receive around-the-clock care and support at no charge – the home runs on individual donations and grants. ABODE is equally committed to community education, delivering regular programs that teach the art of contemplative living and dying.

THOUGHTS FROM AN OMEGA HOME NETWORK MEMBER...

When COVID first entered our cities, I suspect we were all stunned. We at ABODE certainly were. What do we do when our mayor is asking us to shelter in place and yet we have a house full of guests to care for?

Omega Home Network instantly stepped up with weekly Zooms where we shared ideas, safety protocols and, most importantly, support. At a time when each of us could have felt very alone, the Network inspired an even stronger sense of community to help one another navigate through this difficult time and all the unknowns that we had to face.

I'm convinced that the Network leadership and our honest exchange of information helped us make the best decisions that continue to keep our guests, families, staff and volunteers as safe as we can be.

On top of that, the online forum, annual conference and regular newsletters and communications – and simply being able to pick up the phone and call one another – provide insights that we wouldn't have without the benefit of the Network.

The Network serves as a guiding light for our individual successes and for our mutual, heart-warming success in properly caring for those at the end of life.

imagine

OMEGA HOME NETWORK NATIONAL CONFERENCE
JUNE 14-16, 2022 | TULSA, OK

HYATT REGENCY DOWNTOWN

keynote speaker



In spite of blindness, **Jim Stovall** has been a National Olympic weightlifting champion, a successful investment broker, the President of the Emmy Award-winning Narrative Television Network and a highly sought-after author and platform speaker. He is the author of 40 books, including the bestseller, *The Ultimate Gift*, which is now a major motion picture. He was also chosen as the International Humanitarian of the Year. Steve Forbes, president and CEO of Forbes magazine, says, “Jim Stovall is one of the most extraordinary men of our era.”

session topics



Understanding Family Dynamics
Gold Standard Omega Home
Staffing Retention
Role of a Volunteer Medical Liaison
Admissions Process, Policies & Procedures
Creating Sacred Space and Rituals
Getting the Most Out of the OHN Manual
Financial Management & More!

OPTIONAL
BOOT CAMP
FOR EDs &
LEADERS
JUNE 14

REGISTER AT OMEGAHOMENETWORK.ORG

BOARD OF DIRECTORS



Kelley Scott, BSN, RN, CHPN

President
Clarehouse - Tulsa, OK



Ashley Tack

Treasurer
Marion, NY



Annie Pillers

Secretary
Friends of Hospice - Pullman, WA



Diane Rudholm

Newaygo County Compassion Home - Fremont, MI



Jo Ellen Strieter

Toni & Trish House - Auburn, MI



Kim Adams

The Lily House - Wellfleet, MA

ADMINISTRATOR



Britni Smith, CHPNA

Clarehouse - Tulsa, OK

