

# Shared Lives Plus

## Social worker and Shared Lives champion training and support



[training@sharedlivesplus.org.uk](mailto:training@sharedlivesplus.org.uk)

[www.sharedlivesplus.org.uk](http://www.sharedlivesplus.org.uk)





# Contents

**About the training and support programme** **2**

---

**Training options** **5**

---

**Support options** **6**

---

**Training delivery and content** **7**

- **Shared Lives champions training**
  - **Shared Lives social care practitioner training**
  - **Shared Lives social care manager and leadership training**
- 

**Fees** **9**

---

**Contact us** **9**



# About the training and support programme

Welcome to our Shared Lives Plus training and support programme, specially designed for social care practitioners. Shared Lives is a unique, person-centred approach that supports adults with care needs by matching them with trained carers who share their home and community life.

Shared Lives is an often-untapped provision within local communities. Supporting social care practitioners and referral teams to develop greater confidence and awareness of Shared Lives as an offer for individuals they are assessing and supporting, can lead to an increase in good quality referrals.

This training and support is based on extensive research, including surveys and in-person consultations, to ensure it addresses the real needs and challenges of professionals in the field. As the only organisation in the adult social care sector dedicated to the development, delivery and growth of Shared Lives across the UK, our training is rooted in sector knowledge, lived experience and national best practice.



## Confidence, knowledge and better Shared Lives referrals

During our research, we found that social care practitioners had an overall lack of awareness, knowledge and skills around Shared Lives, specific areas included:

- **Low confidence in referrals leading to a successful Shared Lives arrangement**
- **A lack of knowledge about which Shared Lives carers were available**
- **Poor quality referrals, which meant that Shared Lives schemes could not find a match or had to go back for more information**
- **A lack of trust in Shared Lives (driven by poor knowledge of this model of care)**
- **Having poor prior experience with Shared Lives**
- **Poor time perceptions – how long a referral to arrangement can take**
- **An overall lack of knowledge about who Shared Lives is for, what benefits it delivers, and how it compares to other forms of care, for example it is the safest form of care and often significantly cheaper**

---

Our training has been designed to address these barriers and provide a deeper understanding of the Shared Lives model.

Delegates will learn best practices for referring to Shared Lives effectively and discover how it can support them in their strength-based practice, enriching lives and building stronger, more inclusive communities.

Training and support can be tailored to your specific area using your terminology, practice frameworks and processes, and can be mixed and matched.



## Shared Lives Plus training and digital offer

The social worker and Shared Lives champion training is part of the wider Shared Lives Plus training and digital offer; a suite of online tools, eLearning and bespoke training bringing together accessible and streamlined ways of working that supports the entire workforce, including Shared Lives carers, Shared Lives scheme staff, social workers and wider strategic and operational teams.

You can pick and choose the required tools which include:



**Shared Lives carer training platform**



**Scheme specialised training**



**Shared Lives carer matching platform**



**Social worker and Shared Lives champion training**

Contact us to find out more about the social worker and Shared Lives champion training and our wider training and digital offer:

[training@sharedlivesplus.org.uk](mailto:training@sharedlivesplus.org.uk)



# Training options

Training falls broadly into three categories:

## Shared Lives champions training



This training is for experienced members of social care teams who will then act as advocates and champions for Shared Lives. They will gain a greater depth of knowledge and cascade their knowledge to team members. Team members can come to them for help and advice.

---

## Shared Lives social care practitioner training



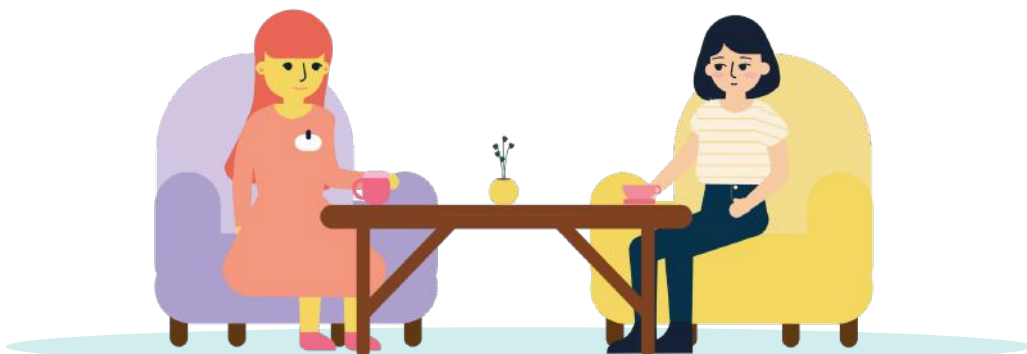
This training is lighter touch and aims to give an overview of Shared Lives. It complements the champions training by providing a broad base knowledge for team members.

---

## Shared Lives social care manager and leadership training



This training provides team managers and senior leaders with an overview of Shared Lives, the champions role, and what they can do to support champions and enable teams to refer to Shared Lives as appropriate.



# Support options

## **Building Shared Lives into social care practitioner pathways and processes**

Referrals into Shared Lives are unique as it involves a careful matching process between those seeking care and support and the Shared Lives carers who will provide it. Unlike most referral pathways, this can take time and good communication between social care practitioners and Shared Lives scheme staff.

Our team can support you to review your current referral pathway and supporting processes, to ensure these are streamlined in providing the most optimal referral experience for schemes, social care practitioners and people seeking Shared Lives support.

This would entail a review of your current referral pathway, associated process maps, guidance and tools, alongside light touch engagement with core referral teams and scheme staff. We can also work with you to develop awareness raising materials that can be cascaded to social care practitioner teams, to further encourage and enable good quality referrals into Shared Lives.



# Training delivery and content

## Shared Lives champions training

### Delivery:

- Three x 1hr.45 sessions
- One-two weeks apart between each session
- Online delivery via Teams
- Maximum 20 participants per cohort
- Pre and intersession learning via workbooks
- Delivered by a registered social worker

### Content:

#### Understanding the Shared Lives process

- Role and responsibilities of a champion
- The Shared Lives journey
- The Shared Lives process

#### Making good referrals and ensuring successful arrangements

- Making a good referral
- Matching and introductions
- Shared Lives agreements

#### Care and support planning

- Care and support planning best practice
- Shared Lives plans

## Shared Lives social care practitioner training

### Delivery:

- Up to six pre-recorded bite size modules, aligned to your local practice and processes
- Each module 15–20 mins long
- Modules are downloaded and saved in your training resource area
- Can be accessed by learners when convenient
- No limit on number of views

### Content:

- What is Shared Lives
- Who to refer to Shared Lives
- Making a referral
- Care plan reviews and safeguarding
- Transitions
- Shared Lives as a lived experience (an interview with a Shared Lives supported person)

## Shared Lives social care manager and leadership training

### Delivery:

- One x 1hr.30 online session
- Online delivery via Teams
- Maximum 20 participants

### Content:

- Shared Lives overview
- Champion's role overview
- Role of the manager as an enabler

# Fees

Our social worker and Shared Lives champion training is fully tailored to your needs; we collaborate with you to clarify your goals and shape your training; providing an initial indicative fee which we refine together to ensure best value.



All costs are exclusive of VAT and are based on expected delivery hours/days required to support each aspect of the project but can be developed to suit specific needs.

Fees are exclusive of any travel and basic subsistence for in person training, which will be charged as per Shared Lives Plus travel policy.

---

## Contact us

If you would like more information on our social worker and Shared Lives champion training and support offer, contact our training team



[training@sharedlivesplus.org.uk](mailto:training@sharedlivesplus.org.uk)








Our **lives** get better  
when they're **shared**

**Be trained by the leading experts in  
Shared Lives care**

 [www.sharedlivesplus.org.uk](http://www.sharedlivesplus.org.uk)

 [training@sharedlivesplus.org.uk](mailto:training@sharedlivesplus.org.uk)

Company Number 4511426

Reg Charity Number (Scotland) SC042742

Reg Charity Number (England and Wales) 1095562