

2026 BARN STORE CATALOG



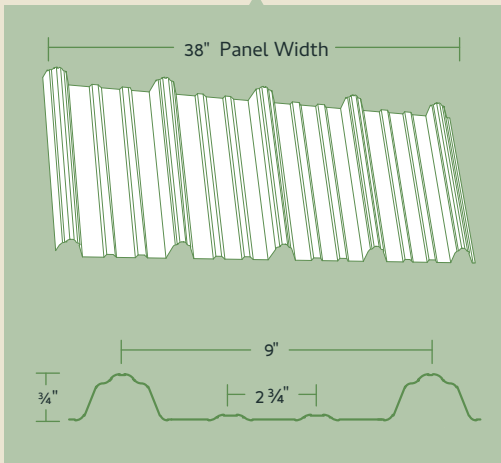
GARAGES | WORK SHOPS | CARPORTS | AGRICULTURE



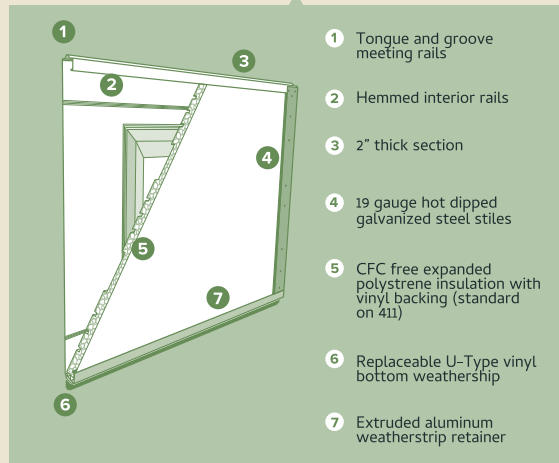
The BARN STORE

ALL STANDARD BUILDS COME WITH THE BARN STORES
1 YEAR WORKMANSHIP WARRANTY.

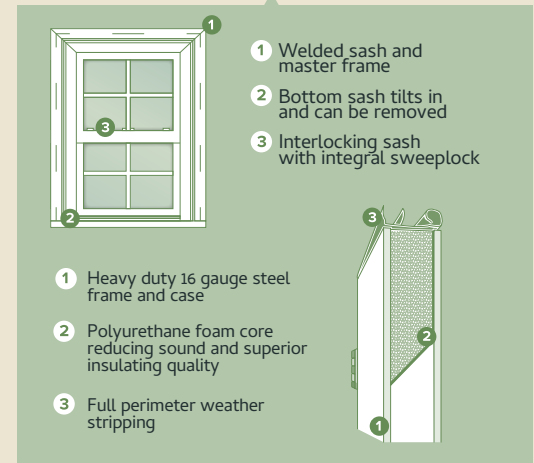
LIFETIME WARRANTY 29G MAC RIB
SIDING AVAILABLE IN 21 COLORS.



WARRANTIED INSULATED AND
WEATHER RESISTANT GARAGE DOORS.

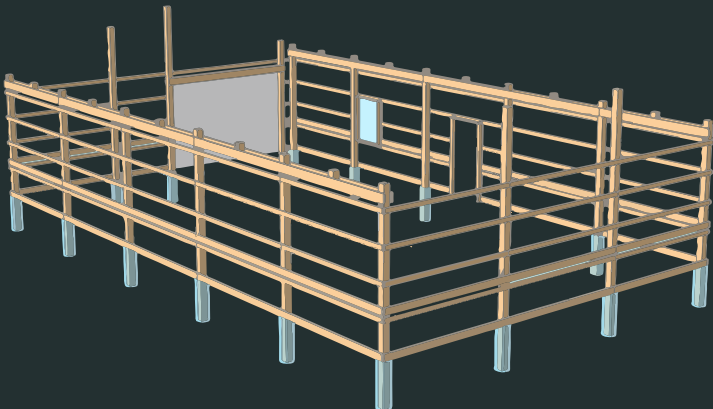


WARRANTIED ENERGY EFFICIENT
WINDOWS AND DOORS.

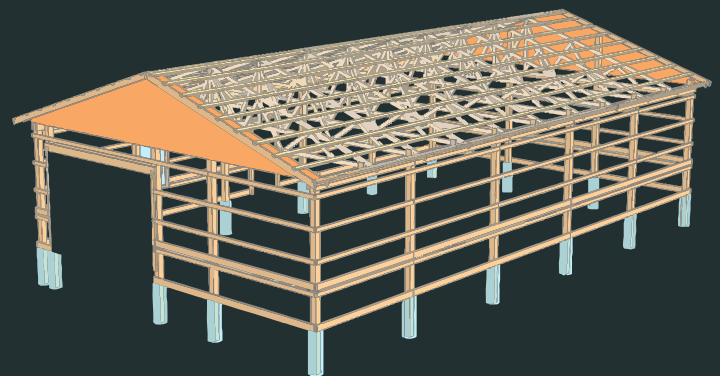


POSTS ARE CCA TREATED AND BURIED 3'
WITH CONCRETE SURROUNDING

NUMBER 2 AND BETTER GRADE
LUMBER FOR MAIN FRAME



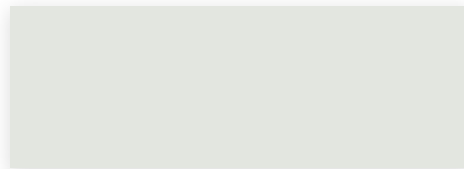
NUMBER 1 GRADE LUMBER
ENGINEERED TRUSSES



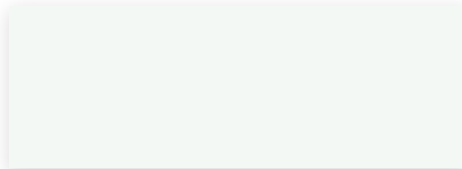
CLICK HERE FOR
A FREE QUOTE

VISIT OUR
WEBSITE

ALL BUILDINGS AVAILABLE IN 21 DIFFERENT STANDARD COLORS.



WHITE



BRIGHT WHITE



RED



LIGHT STONE



GRAY



DARK RED



CLAY



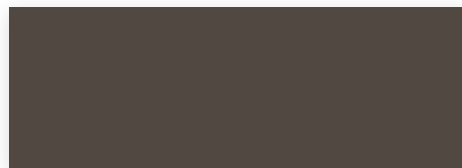
CHARCOAL



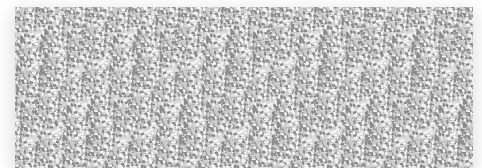
BLACK



GREEN



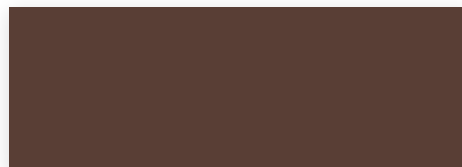
BURNISHED SLATE



GALVALUME



BUCKSKIN



BROWN



SAPPHIRE BLUE



TAN



GALLERY BLUE



BRIGHT RED



PLUM



BLUE



COPPER PENNY

- Lifetime Paint Adhesion Warranty
- 30 Year Chalk / 30 Year Fade Resistance
- Residential Applications
- Increased Hail Resistance
- 25 Year Galvalume® Substrate Warranty

These colors are as representative of our paint as is technologically possible.
For an exact match, please request a paint chip from your salesperson.



24' x 24' x 10'

The
GARAGE

\$33,289

- *6/12 Pitch Roof*
- *8x24 Open Shed*
- *18x2 Finished Eyebrow*
- *16x8 Insulated Garage Door*
- *2-3040 Windows*
- *1-3068 Half Glass Door*
- *Thermaguard Insulation*
- *6" Gutters and Down Spout*
- *3x3 Cupola*
- *1' Overhang*
- *3' Wainscot*
- *4" Concrete*

Excavation and Delivery are Excluded.



UPGRADE OPTION 2

- 4/12 Pitch Roof
- 8x24 Open Shed
- 16x8 Insulated Garage Door
- 2-3040 Windows
- 1-3068 Steel Door
- Thermaguard Insulation
- 1' Overhang
- 3' Wainscot
- 4" Concrete

\$26,125



UPGRADE OPTION 1

- 4/12 Pitch Roof
- 16x8 Insulated Garage Door
- 2-3040 Windows
- 1-3068 Steel Door
- Thermaguard Insulation
- 1' Overhang
- 4" Concrete

\$22,431



STANDARD OPTION

- 4/12 Pitch Roof
- 10x8 Insulated Garage Door
- 2-3030 Windows
- 1-3068 Steel Door
- Thermaguard Insulation
- 4" Concrete

\$19,773



30' x 30' x 10'

The
WORKSHOP

\$39,721

- *6/12 Pitch Roof*
- *8x30 Open Shed*
- *10' Deco Truss (Over Metal)*
- *2-10x8 Insulated Garage Doors*
- *1-3068 Half Glass Door*
- *2-3040 Windows*
- *Thermaguard Insulation*
- *Gutters and Down Spout*
- *3x3 Cupola*
- *1' Overhang*
- *3' Wainscot*
- *4" Concrete*

Excavation and Delivery are Excluded.



UPGRADE OPTION 2

- 8x30 Open Shed
- 2-10x8 Insulated Garage Door
- 2-3040 Windows
- 1-3068 Steel Door
- Thermaguard Insulation
- 1' Overhang
- 3' Wainscot
- 4" Concrete

\$33,805



UPGRADE OPTION 1

- 2-10x8 Garage Doors
- 2-3040 Windows
- 1-3068 Steel Door
- Thermaguard Insulation
- 1' Overhang
- 4" Concrete

\$28,768



STANDARD OPTION

- 10x8 Insulated Garage Door
- 2-3030 Windows
- 1-3068 Steel Door
- Thermaguard Insulation
- 4" Concrete

\$24,070



30' x 40' x 12'

The
STANDARD

\$53,445

- *6/12 Pitch Roof*
- *2-10x10 Insulated Garage Doors*
- *4-3040 Windows*
- *2-3068 1/2 Glass Doors*
- *10x40' Open Shed*
- *10x20' Enclosed Shed*
- *10x20' Shed*
- *Thermaguard Insulation*
- *Gutters and Down Spout*
- *1' Overhang*
- *10' Deco Truss (On top of Metal)*
- *3' Wainscot*
- *4" Concrete*

Excavation and Delivery are Excluded.



UPGRADE OPTION 2

- 10x40' Open Shed
- 2-10x10 Insulated Garage Doors
- 3-3040 Windows
- 1-3068 Door
- Thermaguard Insulation
- 1' Overhang
- 3' Wainscot
- 4" Concrete



\$43,777



UPGRADE OPTION 1

- 2-10x8 Garage Doors
- 2-3040 Windows
- 1-3068 Steel Door
- Thermaguard Insulation
- 1' Overhang
- 4" Concrete



\$35,120



STANDARD OPTION

- 10x8 Insulated Garage Door
- 2-3040 Windows
- 1-3068 Steel Door
- Thermaguard Insulation
- 4" Concrete



\$29,654



30' x 50' x 10'

The

JOURNEYMAN

\$54,165

- *6/12 Pitch Roof*
- *8x50 Open Shed*
- *2-12x8 Insulated Garage Doors*
- *4-3040 Windows*
- *1-3068 1/2 Glass Door*
- *Gutters and Down Spout*
- *Thermaguard Insulation*
- *1' Overhang*
- *10' Deco Truss (On top of Metal)*
- *4x4 Cupola*
- *3' Wainscot*
- *4" Concrete*

Excavation and Delivery are Excluded.



UPGRADE OPTION 2

- 8x50 Open Shed
- 2-12x8 Insulated Garage Doors
- 4-3040 Windows
- 1-3068 Door
- Thermaguard Insulation
- 1' Overhang
- 3' Wainscot
- 4" Concrete

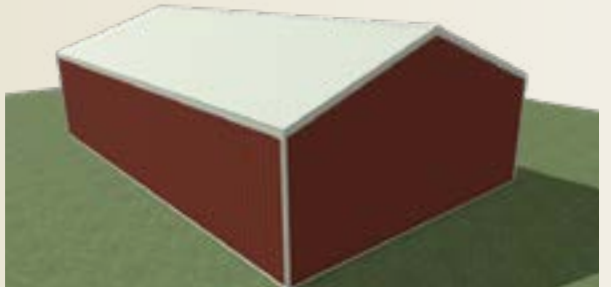
\$47,309



UPGRADE OPTION 1

- 1-16x8 Insulated Garage Door
- 3-3040 Windows
- 1-3068 Steel Door
- Thermaguard Insulation
- 1' Overhang
- 4" Concrete

\$36,176



STANDARD OPTION

- 10x8 Insulated Garage Door
- 2-3030 Windows
- 1-3068 Steel Door
- Thermaguard Insulation
- 4" Concrete

\$32,211

"It's a tough life, but it's a good life — and it's mine."
— "Rough & Ready" by Trace Adkins



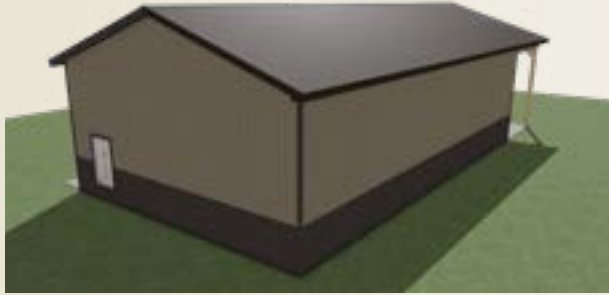
30' x 50' x 14'

The
FOREMAN

\$70,579

- *6/12 Pitch Roof*
- *30x12 Gable Extension*
- *2-12x12 Insulated Garage Doors*
- *5-3050 Windows*
- *2-3068 1/2 Glass Steel Door*
- *1' Overhang*
- *Thermaguard Insulation*
- *16x12 Open Gabled Shed*
- *2-8x8 Open Drop Sheds*
- *Gutters and Down Spout*
- *4' Wainscot*
- *4" Concrete*

Excavation and Delivery are Excluded.



UPGRADE OPTION 2

- 30x12 Gable Extension
- 2-12x12 Insulated Garage Doors
- 3-3050 Windows
- 1-3068 Door
- Thermaguard Insulation
- 1' Overhang
- 4' Wainscot
- 4" Concrete

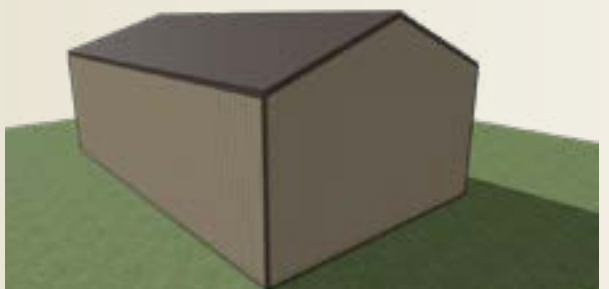
\$54,260



UPGRADE OPTION 1

- 2-12x12 Insulated Garage Doors
- 3-3050 Windows
- 1-3068 Steel Door
- Thermaguard Insulation
- 1' Overhang
- 4" Concrete

\$44,170



STANDARD OPTION

- 1-12x12 Insulated Garage Door
- 2-3040 Windows
- 1-3068 Steel Door
- Thermaguard Insulation
- 4" Concrete

\$39,589



36' x 48' x 12'

The
BRIDLEWOOD

\$86,795

- *6/12 Pitch Roof*
- *2-12x10 Split Sliders*
- *2-10x48 Open Sheds*
- *2-3068 Steel Doors*
- *4-Ramm Front Stalls*
- *4-Wood Dutch Doors*
- *1-12' Poplar Structural Decorative Truss*
- *1-Wash Bay*
- *Thermaguard Insulation*
- *Round Floor Drain*
- *1' Overhang*
- *1-12' Square Hay Hat*
- *1-Tac Room*
- *4x4 Cupola*
- *3' Wainscot*
- *4" Concrete*

Excavation and Delivery are Excluded.



UPGRADE OPTION 2

- 2-12x10 Split Sliders (Poplar with X-Bucks)
- Thermaguard (Main Structure)
- 2-3068
- 4-Wood Stalls
- 4-Wood Dutch Doors
- 1-Tac Room
- 1-Wash Bay
- Round Floor Drain
- 10x48 Open Shed
- 1' Overhang
- 3' Wainscot
- 4x4 Cupola
- 4" Concrete

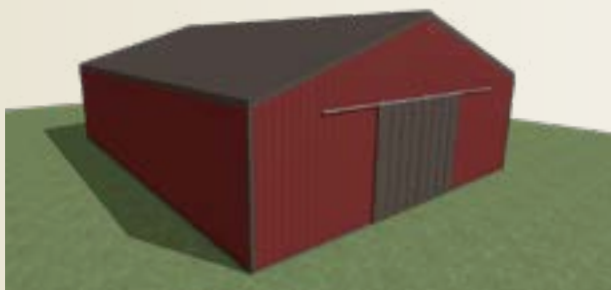
\$67,503



UPGRADE OPTION 1

- 2-12x10 Split Sliders (Metal with X-Bucks)
- Thermaguard Insulation (Walls and Roof)
- 1-3068 Steel Door
- 6-Additional Posts (Stalls/Rooms)
- 1' Overhang
- 4" Concrete

\$33,974



STANDARD OPTION

- 2-12x10 Split Sliders (Metal)
- Thermaguard Insulation (Roof)
- 1-3068 Steel Door
- 6-Additional Posts (Stalls/Rooms)

\$22,919



40' x 60' x 12'

The
CRAFTSMAN

\$103,697

- *6/12 Roof Pitch*
- *2-12x10 Insulated Garage Doors*
- *1-16x10 Insulated Garage Door*
- *6-3050 Windows*
- *2-3068 Steel Doors*
- *2-8x20 Open Sheds (3/12)*
- *38x12 Gabled Shed (8/12)*
- *40x8' Open Drop Shed*

- *Thermaguard Insulation*
- *Structural Deco Cedar Truss*
- *Gutters and Down Spout*
- *1' Overhang*
- *4x4 Cupola*
- *3' Wainscot*
- *4" Concrete*

Excavation and Delivery are Excluded.



UPGRADE OPTION 2

- 2-12x10 Insulated Garage Doors
- 1-16x10 Insulated Garage Door
- 6-3050 Windows
- 10x60 Open Shed
- 2-3068 Steel Doors
- Thermaguard Insulation
- 1' Overhang
- 3' Wainscot
- 4x4 Cupola
- 4" Concrete

\$78,485



UPGRADE OPTION 1

- 2-12x10 Insulated Garage Doors
- 4-3050 Windows
- 1-3068 Steel Door
- Thermaguard Insulation
- 1' Overhang
- 4" Concrete

\$57,615



STANDARD OPTION

- 2-10x8 Insulated Garage Doors
- 1-3040 Window
- 1-3068 Steel Door
- Thermaguard Insulation
- 4" Concrete

\$50,886

“And the view I love the most, is my front porch looking in.
- “My Front Porch Looking In” by Lonestar



40' x 50' x 16'

The
CONTRACTOR

\$89,819

- *6/12 Roof Pitch*
- *1-12x10 Insulated Garage Door*
- *1-10x14 Insulated Garage Door*
- *6-3050 Windows*
- *2-3068 1/2 Glass Steel Door*
- *2-10x16' Open Drop Sheds*
- *40x10' Open Drop Porch*
- *Thermaguard Insulation*
- *15' Square Hay Hat*
- *15' Truss (Cedar Corbels)*
- *Gutters and Down Spout*
- *1' Overhang*
- *4' Wainscot*
- *4" Concrete*

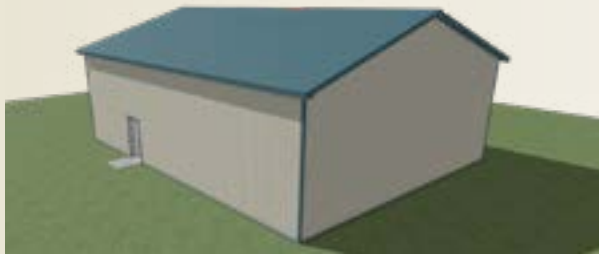
Excavation and Delivery are Excluded.



UPGRADE OPTION 2

- 2 Insulated Garage Doors
- 6-3050 Windows
- 2-3068 Steel Doors
- Thermaguard Insulation
- 10x50' Open Drop Shed
- 15' Square Hay Hat
- 15' Deco Cedar Truss (Cedar Corbels)
- 1' Overhang
- 4' Wainscot
- 4" Concrete

\$75,831



UPGRADE OPTION 1

- 2 Insulated Garage Doors
- 4-3050 Windows
- 1-3068 Steel Door
- Thermaguard Insulation
- 1' Overhang
- 4" Concrete

\$56,776



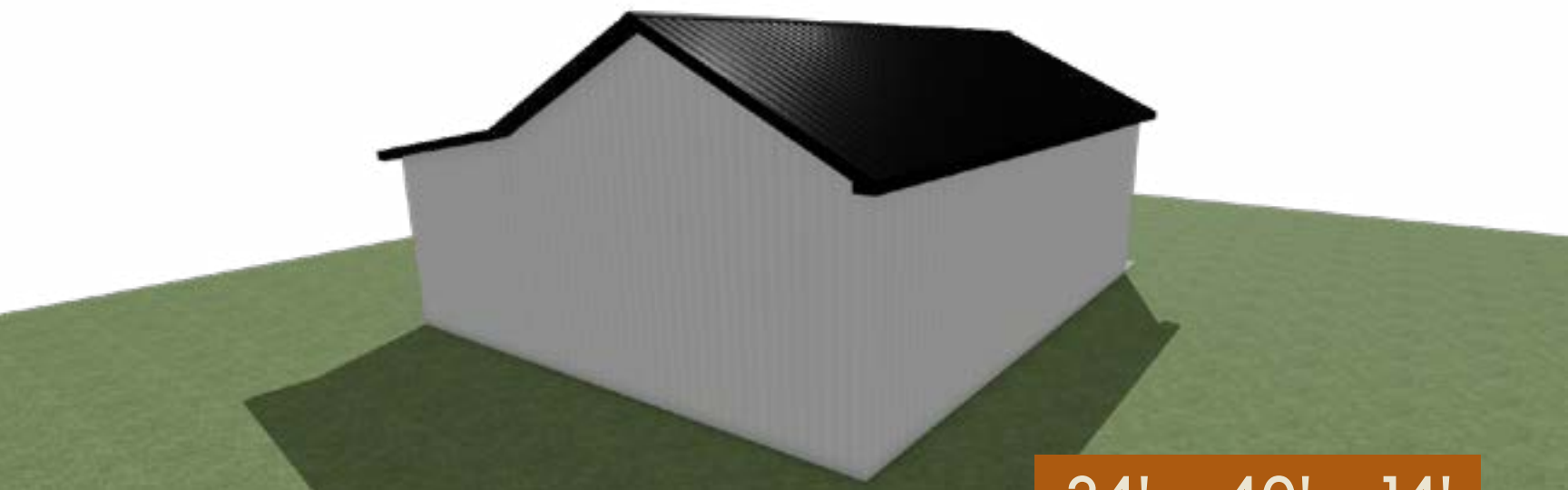
STANDARD OPTION

- 2 Insulated Garage Doors
- 2-3040
- 1-3068
- Thermaguard Insulation
- 4" Concrete

\$50,705

“The only place where success comes before work is in the dictionary.”

— Vidal Sassoon



24' x 40' x 14'

The
ENCLAVE

\$44,380

- *6/12 Roof Pitch*
- *Gutters and Down Spout*
- *1' Overhang*
- *10' Decorative Cedar Truss (over metal)*
- *Thermaguard Insulation*
- *12x40 Enclosed Shed*
- *9x7 Insulated Garage Door*
- *1-3068 Steel Door*
- *4" Concrete**

Excavation and Delivery are Excluded.

UPGRADE OPTION 2



- *Thermaguard Insulation (Roof Only)*
- *1' Overhang*
- *10' Decorative Cedar Truss (over metal)*
- *4" Concrete*

\$21,918

UPGRADE OPTION 1



- *Thermaguard Insulation (Roof Only)*
- *4" Concrete*

\$18,817

STANDARD OPTION



- *Roof and Gable*

\$10,892

“Sometimes you just have to take the road less traveled and enjoy the ride.”
– “The Road Less Traveled” by George Strait



24' x 24' x 10'

The

OUTPOST

\$28,839

- *6/12 Roof Pitch*
- *1' Overhang*
- *8' Decorative Cedar Truss (over metal)*
- *24x12 Gable Extension*
- *12x9 Metal Split Slider (with X-Bucks)*

- *Thermaguard Insulation*
- *Gutters and Down Spout*
- *1-3068 Steel Door*
- *3x3 Cupola*
- *4" Concrete*

Excavation and Delivery are Excluded.



UPGRADE OPTION 2

- *Thermaguard Insulation (Roof Only)*
- *1' Overhang*
- *8' Decorative Cedar Truss (over metal)*
- *4" Concrete*

\$15,176



UPGRADE OPTION 1

- *Thermaguard Insulation (Roof Only)*
- *4" Concrete*

\$13,091



STANDARD OPTION

- *Roof and Gable*

\$8,264



18' x 18' x 10'

The
CAVE

\$29,976

- *1-3068 Door*
- *6' Extended Gable*
- *1-8x8 Insulated Lit Garage Door*
- *Gutters and Down Spout*
- *Electrical Package*
- *Thermaguard Insulation*
- *Deco weather vane*
- *1' Overhang*
- *3' Wainscot*
- *4" Concrete*

Excavation and Delivery are Excluded.

UPGRADE OPTION 2



- 1-3068 Door
- Thermaguard Insulation
- 1-8x8 Insulated Garage Door
- 1' Overhang
- 3' Wainscot
- 4" Concrete

\$17,250

UPGRADE OPTION 1



- 1-6068 Full Lit Door
- Thermaguard Insulation
- 4" Concrete
- 1' Overhang

\$14,350

STANDARD OPTION



- 1-6068 Full Lit Door
- Thermaguard Insulation
- 4" Concrete

\$13,260

"I was taught the value of hard work. That nothing comes easy."

– Tim Scott



32' x 45' x 14'

The
LONG SHORE

\$57,426

- *5-3040 Windows*
- *1-6068 Door*
- *1-3068 Door*
- *8x20' Open Drop Shed*
- *Gutters and Down Spout*
- *8x25' Enclosed Drop Shed*
- *2-10x12 Insulated Garage Doors*
- *Thermaguard Insulation*
- *1' Overhang*
- *Gutters and Down Spout*
- *4' Wainscot*
- *4" Concrete*

Excavation and Delivery are Excluded.



UPGRADE OPTION 2

- 2 10x12' Insulated Garage Doors
- 5-3040 Windows
- 1-3068 Door
- Thermaguard Insulation
- 16x8' Open Drop Porch
- 1' Overhang
- 4' Wainscot
- 4" Concrete

\$49,867



UPGRADE OPTION 1

- 2 10x12' Insulated Garage Doors
- 3-3040 Windows
- 1-3068 Door
- Thermaguard Insulation
- 1' Overhang
- 4" Concrete

\$44,284



STANDARD OPTION

- 1 10x12' Insulated Garage Doors
- 1-3040 Window
- 1-3068 Door
- Thermaguard Insulation
- 4" Concrete

\$37,512

"I was taught the value of hard work. That nothing comes easy."

— Tim Scott

WAREHOUSES



FULLY CUSTOMIZABLE

Our buildings offer a variety of upgrades both basic and specialized to meet industrial needs, including floor drains, electrical packages and reinforced concrete for heavy machinery.



FAST CONSTRUCTION

Post-frame buildings go up 30-50% faster than red-iron structures, with shells often completed in just days. They're incredibly durable and engineered for long-term performance.

SAVINGS START AT 4,000 SQ FT

Giving you a durable, high-strength post frame workspace. At this entry size, you get a price break, **SAVING \$19 PER SQ FT *** while enjoying open, long-lasting interiors built to perform.

*not including cost of site prep



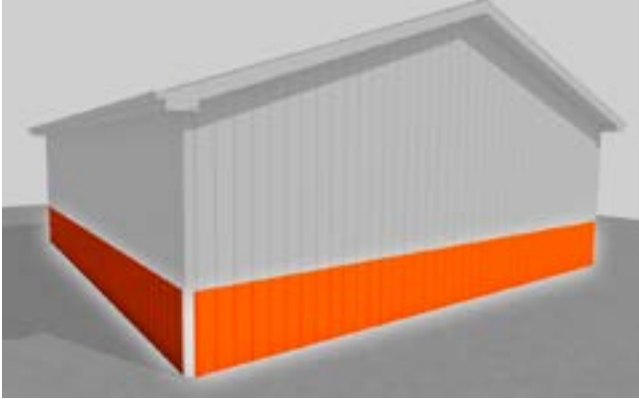
COST
EFFECTIVE

**STARTING AT
\$23 PER SQ FT**

Our warehouses offer a variety of interior options to meet the demands of any industry. Consult with our representatives to customize your workspace and ensure it's built for your specific operations.

FINISHING TOUCHES

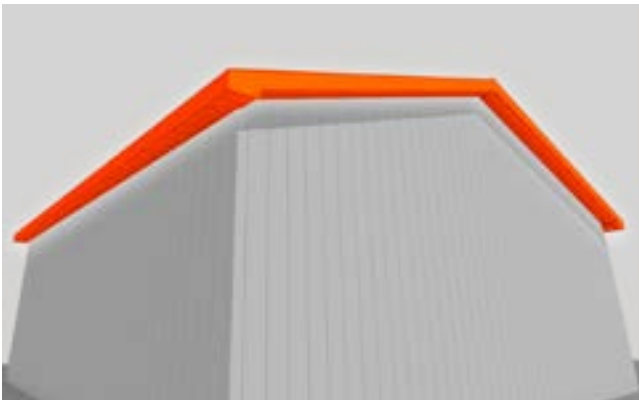
Make your building truly yours with our selection of finishings. Choose from windows, sheds, doors, cupolas, and other enhancements to create a space that matches your style and purpose.



3' WAINSCOTTING

Exterior wainscoting for barns is durable lower-wall paneling that boosts curb appeal, protects against scuffs, and makes replacing lower sections quick and easy.

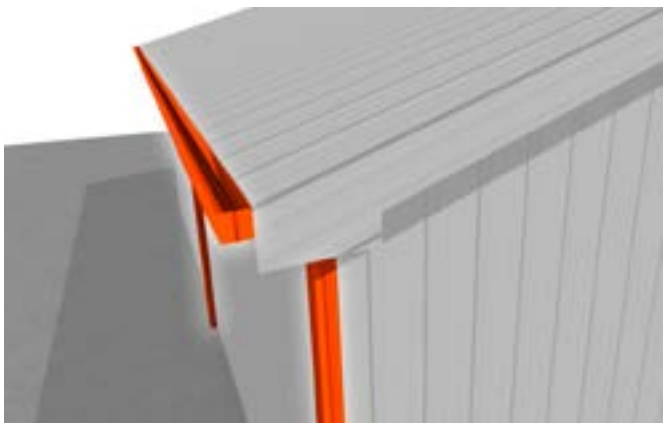
ESTIMATED COST: \$8.50 PER LINEAR FT



1' OVERHANG

Soffit and fascia overhang adds a clean, finished look while providing strong water protection that shields roof edges and walls from moisture and weather damage.

ESTIMATED COST: \$13-18 PER LINEAR FT



6" GUTTERS AND DOWNSPOUTS

Direct rainwater away from the building, preventing erosion, foundation issues, and siding damage while keeping the structure cleaner and more protected.

ESTIMATED COST: \$10.75 PER LINEAR FT



3' X 3' CUPOLA

Adds classic barn character while improving ventilation, helping release heat and moisture from the building for a healthier interior environment.

ESTIMATED COST: \$1,795



4' X 5' AWNING

Adds character and function by providing extra protection from rain and sun, keeping entryways drier, cleaner, and easier to use in any weather.

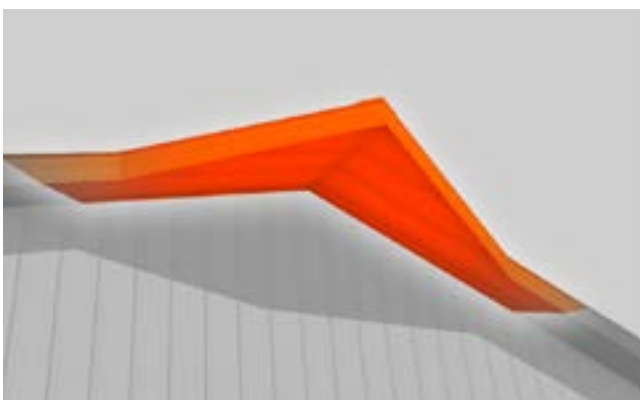
ESTIMATED COST: \$1,050



WOODEN DUTCH DOOR

Classic, rustic charm and practical function, allowing the top half to open for light and airflow while keeping the lower section closed for security and livestock control.

ESTIMATED COST: \$1,050



10' TAPERED HAY HAT

A staple in barn styles and functions this offers a great aesthetic with the hat guarding gable sided doors from rain and inclement weather.

ESTIMATED COST: \$1,500



DECORATIVE TRUSS

Creates visual appeal and architectural interest to a barn's exterior or interior. They create a striking focal point while showcasing the beauty and craftsmanship of natural wood.

ESTIMATED COST: \$80 PER LINEAR FT



FAUX METAL HAY DOOR

The appearance of traditional hay loft doors without the need for functional pulleys or lifting systems. They add visual interest and classic barn character while requiring minimal maintenance.

ESTIMATED COST: \$350



EPOXY FLOOR WITH FLAKE

A durable, high-performance surface that resists stains, chemicals, and wear. The decorative flakes add texture and visual depth while improving slip resistance for safer, longer-lasting floors.

ESTIMATED COST: \$7 PER SQ FT



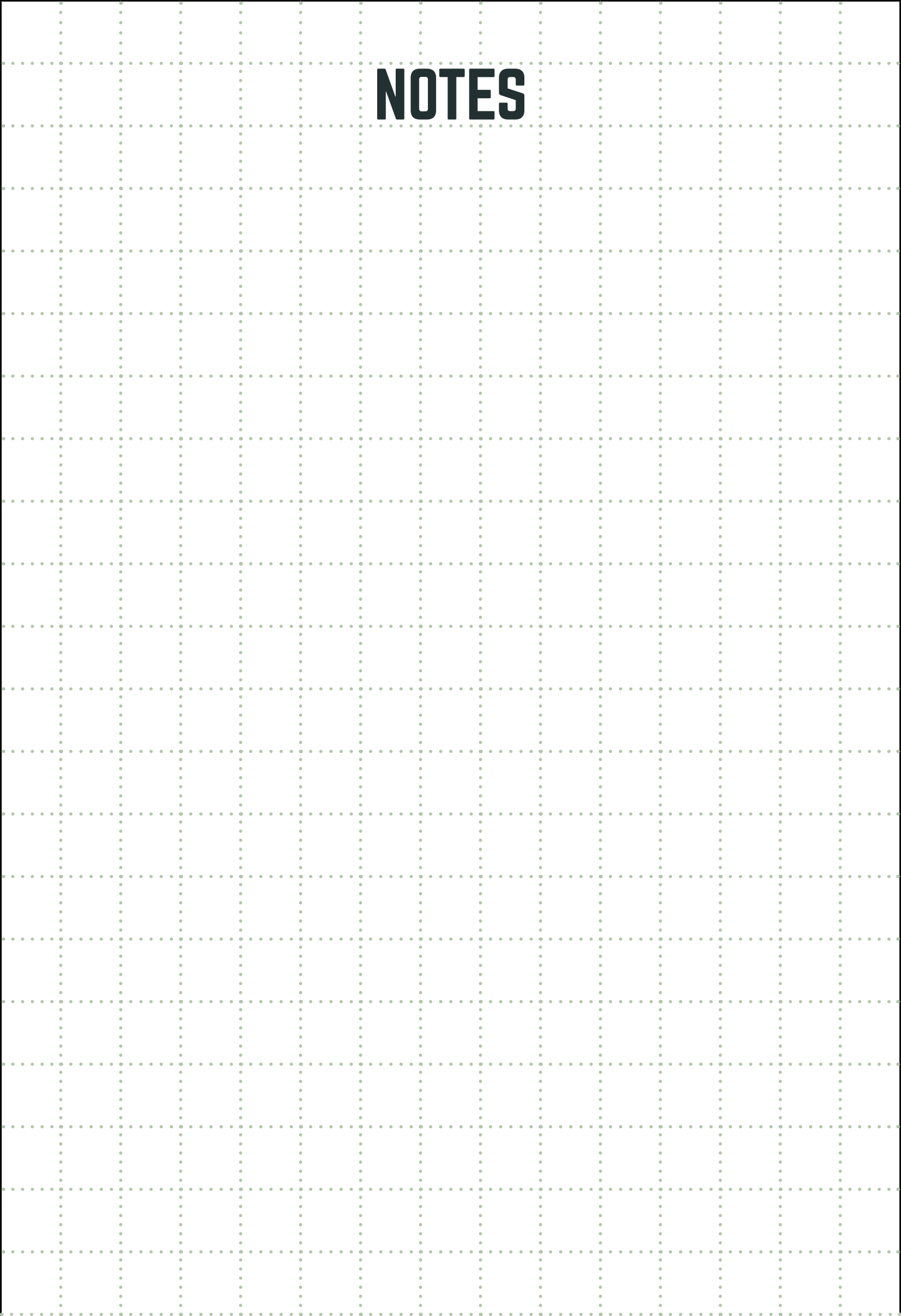
CUSTOM HOUSE PLANS

Our in-house draftsman delivers expert, precise designs tailored to each client's vision. We create custom detailed, one-of-a-kind plans that bring your dream barn or home to life.

ESTIMATED COST : \$1 PER SQ FT

(free with the purchase of a barn home.)

NOTES



LETTER FROM OUR CEO.

I want to personally thank you for considering our business for your barn and building needs. From the beginning, our mission has been simple: to deliver exceptional craftsmanship and unparalleled service that you can trust.

-Austin Christian



GET YOUR **FREE** QUOTE TODAY

