

SUPERLOCK 2.0 KEYED QUICK-EXIT



CODE: C

5-Year Warranty

Reversible Handing

Suitable for metal gate frames. For wooden gates, our surface-mounted option is available.

INCLUDED IN THE BOX

- 2.5mm hex key + 3mm hex key
- 2 x M8 fixing bolts
- Face plate
- Latchbolt
- Strike plate (2 x self-drilling fasteners)



Combine safety and convenience with quick, easy exit from the inside and secure keyed entry outside. Featuring a green push pad for effortless exit, this lock is ideal for gates the require fast, reliable egress.

Product code	Description
BQK1030	To fit 10-30mm (½" - 1 ¼") gate frames
BQK4060	To fit 40-60mm (1 ½" to 2 ¼") gate frames
Available in:	 Black RAL9005 Moss Green RAL6005

HELP & SUPPORT

Need further assistance? Our customer support team can help with order queries, product identification, spare parts, warranty information and general after-care.



UK: +44 1243 558580 US: +1 214 872 9687



www.gatemasterlocks.com



support@gatemasterlocks.com

TECHNICAL SPECIFICATIONS

Lock type	Keyed gate lock
Handing	Reversible, supplied right-handed
Latchbolt throw	15mm (5/8")
Lock case width	70mm (2 3/4")
Fixing method	3-hole drilling. Bolt-on
Fixings included	Yes
Warranty	5 years
Compatible Keeps	BSK, BSKS, BSKG
Compatible Shroud	BQS

FAQ's

1. Can I change the handing after I have installed the lock onto the gate?

Yes, you can change the handing after installation without removing the lock from the gate. Please make sure that you have access from inside the gate in order to be able to change the handing.

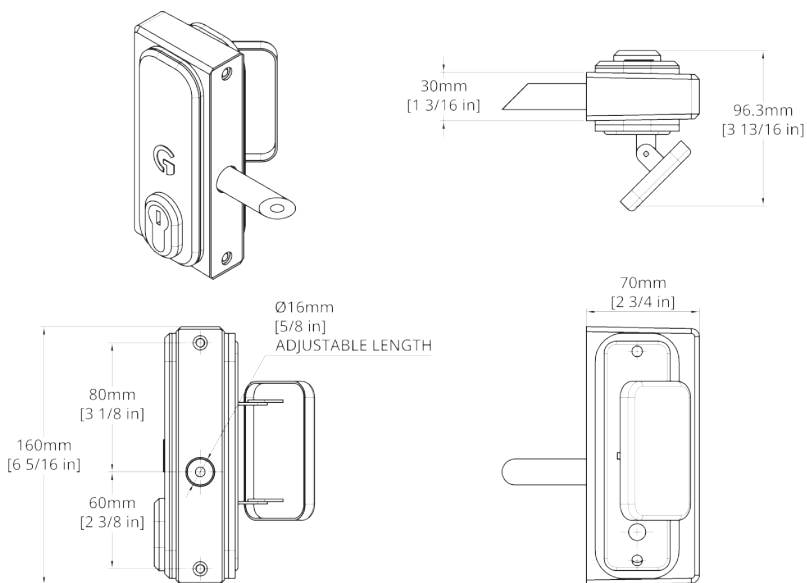
2. The eurocylinder is not aligning with the screw what do I do?

If the eurocylinder on the BQK doesn't align when you insert it back into the casing check that the internal components are fitted correctly into the case. Hold the internal components in place and your eurocylinder should go in. Make sure to take the key out of the eurocylinder as this secures it in place and ensures it does not fall out. If the eurocylinder is still getting stuck, contact our sales team for further assistance.

3. The latch thread is stuck inside the lock casing what do I do?

If your latch thread got stuck inside when pushing it into the casing to fit the push pad back onto the lock, simply wiggle it out with your finger and it should spring back out. Additionally, you can install the latchbolt before you start changing the handing as this may make it easier for the latch thread to not get stuck in the casing.

1. Check the gate handing. If left-hand is required, reverse the handing using the instructions below. For right-hand gates, go to step 2.
2. Drill 2 x 9mm (3/8") holes at 140mm (5 1/2") centres for fixing bolts provided.
3. Drill a 18mm (3/4") clearance hole for the latchbolt at 60mm (2 3/8") centres up from the bottom fixing hole.
4. Hold the lock against the back of the box section and screw on the latchbolt through the larger hole.
5. Lock the latchbolt with the hex key supplied by inserting the hex key into the end of the latchbolt.
6. Fix lock in place using the stainless steel bolt support plate and the countersunk screws provided. Ensure the latchbolt moves freely.
7. Fix strike plate by either welding or screw fixing onto the gate post.



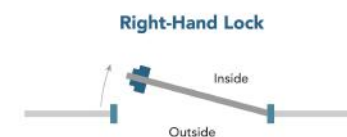
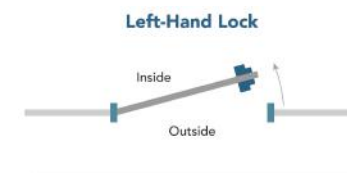
MAINTENANCE

6 Monthly:

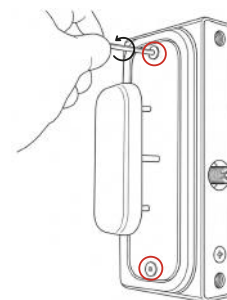
1. Remove keypads from the lock.
2. Spray the inside of the lock thoroughly with WD40 or equivalent, through the tumbler holes at the back of the lock.
3. Spray all the fixing accessories and the latch with WD40 or equivalent.
4. Push each of the buttons and rotate the knob several times to make sure the lock is working smoothly.

HOW TO CHANGE HANDING FROM RIGHT TO LEFT HANDING

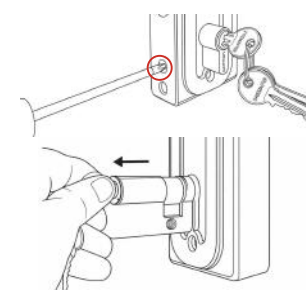
Handing refers to the side on which the gate is hinged. This determines whether the lock should be set for left-hand or right-hand installation. When standing outside the gate, if the hinges are on the left, the lock must be changed to left-hand setting.



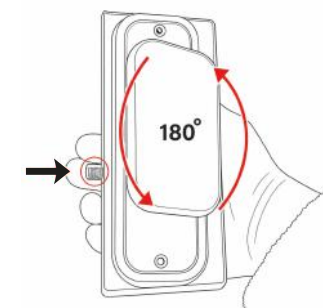
OUR LOCKS ARE SUPPLIED RIGHT-HANDED. IF A RIGHT-HANDED LOCK IS REQUIRED, SKIP THE STEPS BELOW AND CONTINUE WITH INSTALLATION.



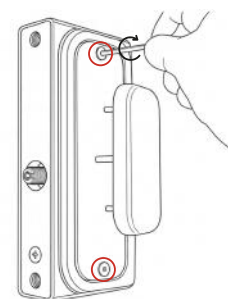
1. Using the 2.5mm hex key, unscrew the two screws located at the top and bottom. Remove the push pad and front plate.



2. Using a screwdriver, unscrew the screw located on the forend plate. Remove the eurocylinder from the casing by inserting the keys and turning them to either 11 or 1 o'clock. Pull the eurocylinder out and refit on the other side.



3. Rotate the push pad 180° and fit it on the opposite side. Make sure to push the latch thread in before refitting the push pad.



4. Screw the screws back in and refit the push pad using the 2.5mm hex key, ensuring the flat spindle and rubber gaskets are in place. Check that the push pad is on the correct side for the required handing.

Check that the code and handle work correctly and then follow the instructions install the lock onto the gate.