

SC SONNING COMMON MAGAZINE

IN THIS ISSUE



BRITAIN IN BLOOM

VIEWS OF LOCAL
RESIDENTS
P2



FOOD WASTE RECYCLING

WHERE DOES OUR
FOOD GO NEXT?
P11



I PREDICT A RIOT

POLICE TRAINING
CENTRE VISIT
P16

ON YOUR BIKE 2014

JUNE / JULY 2014



CARPET FITTER

Fitted Carpets & Vinyl Specialist

Underlays & Fixings Supplied

Re-Adaptions & Restretches

Measuring, Estimating & Planning

Carpets Vinyl Amtico Kamdean

25 YEARS EXPERIENCE

MICHAEL HODGSON

TEL: 0118 901 1777 / MOB: 07841 586003



Outstanding Natural Beauty

Waxing, electrolysis, eyelash tinting,
eyebrow shaping, make-up,
Jessica manicures & pedicures,
Aromatherapy facials.

Tel: 0118 9723157

Janet Copp I.H.B.C

9 Sedgefield Close, Sonning Common

www.chilternbeauty.co.uk

Caversham Aerial Services

TV Aerials Supplied and Fitted.

Poor Reception? Old aerials?

Can't get the new digital channels?

Give us a call - We can help!

Phone 0118 9673596

www.caversham-aerials.co.uk



Property Consultants

Shops, Offices, Industrial, Investments
Valuations, Rent Reviews, Lease Renewals

**Highmoor
Cross**

George Chilvers and Nigel Price FRICS

0118 947 4600

www.highmoorcross.co.uk

DK Flooring

Local Flooring Specialist

**Carpets - Vinyl - Engineered
Wood & Laminate**

Contact Daniel

Office: 0118 4373461 Mob: 07500709716

dkcarpets@hotmail.co.uk

SONNING COMMON PRE-SCHOOL

GROVE ROAD
SONNING COMMON
0118 972 4760

We are a happy friendly pre-school
welcoming children from 2 years
6 months, to come and learn through
play. We have a purpose built building
& extensive play garden.

Morning sessions are 9.00am - 12.00pm
Afternoon sessions are 12.00pm - 3.00pm



elements;
KITCHENS • INTERIORS

Visit our stunning showroom:
8b Portman Road, Reading RG30 1EA
Tel 0118 959 9919
www.elementskitchens.co.uk



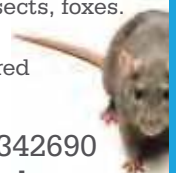
Adam's Pest Control

Professional Pest Control in Sonning Common
Rats, mice, rabbits, squirrels, moles, insects, foxes.
Available 7 days a week.

BPCA Qualified and Fully Insured

Call 0118 9723709 or 0784 9342690

www.adamspestcontrol.co.uk



FROM THE EDITORIAL TEAM

Introducing our new refreshed magazine is a great pleasure in a significant year for the magazine. As I write this editorial the AGM has just been held and this is always a good time for reflection.

The magazine celebrated its 40th anniversary at the end of last year, with a display in the library, pull-out section in the December edition, and in January a thank you reception for the advertisers and volunteers who deliver it. All these people, a very large number, make the magazine possible through their financial contribution and by their footwork, every two months.

The editorial team was delighted to produce the first 36 page magazine on 1 May; partly through writing their own articles; by commissioning them and by receiving them from residents. Again a significant change and one especially encouraged, the receipt of many very interesting pieces volunteered by YOU.

The June July edition has not only been redesigned but it also has 36 pages and hopefully something of interest to everyone. Stories range from the Parish Council visit to Thames Valley Police training centre; Food Waste recycling; 3rd Reading bridge; Yoga; Summer Sports and of course Zack's Minecraft tip and fun things for young people. The interview is with Chrissie and the forthcoming important Britain in Bloom competition and we have our usual contributors as well as village happenings, both past and forthcoming.

I hope you enjoy reading it and feel inspired to write your own contribution? By 1 July please ...

Diana

Diana Pearman Editor

Email: editor@sonningcommonmagazine.org



HIGHLIGHTS

- 2 Community News
- 8 Noticeboard
- 11 Food Waste Recycling
- 13 An Interview with
- 15 3rd Reading Bridge
- 16 In Focus
- 23 Join the Club
- 29 Tom Fort
- 30 Parish News
- 32 Diary Dates

Design & Artwork: Kevin Taplin

tensevinnine.com

kevin@tensevinnine.com

07887902376 / 0118 957 6929

Print: Rick Peedell

Xplor Ltd

rick@xplor-pm.co.uk

07766 254422 / 0118 9471955

Cover image: Nikki Hampton

While every effort is made to ensure the accuracy of information printed in this magazine, the editor and the publisher cannot accept any responsibility for the consequences of errors that occur.

SC SONNING COMMON
MAGAZINE

MEET THE TEAM ...



Christine Atkinson



Hannah Rice



Jo Stoves



Joan Grummant



Ros Varnes

USEFUL CONTACTS:

Chairman: Geoff Adams

1 Woodlands Road, Sonning Common RG4 9TD

chairman@sonningcommonmagazine.org

Tel 0118 972 2134

Diary dates: Helen Barker

helen.barker@tesco.net Tel 0118 972 1241

Distribution: Helen Gavin

distribution@sonningcommonmagazine.org

Tel 0118 972 4680

Advertising: John Pearman

advertising@sonningcommonmagazine.org

Tel 0118 972 2381

BRITAIN IN BLOOM- THE WAY FORWARD?

Hannah Rice and Joan Grummant questioned passing residents of Sonning Common, outside the Co-op at the end of April, about the way ahead for the village in the Britain in Bloom competition.

Most responses were very positive and there were many ideas on the ways to develop the work already done by the Village Gardeners. Here is a sample of the responses;

- Trish Rockell suggested a tidy up of the area from the Millennium Green along Kennylands Road. She was willing to take this on as a personal project and get some willing helpers to assist her.
- She also suggested encouraging local shops to take part by awarding a Community Certificate to any business that tidied up their frontage and/or funded a hanging basket or tub.
- Andrew Quincey thought the phone box was a bit weird but also suggested that young people should be encouraged

to grow some fruit and vegetables because they are motivated when they have something back.

He also suggested that local businesses might sponsor a flowerbed that could be planted in their choice of colours.

- A resident of Henley who visits Sonning Common nearly every day, Colin Goddard, thought that a school with a gardening club might be able to support elderly residents by helping with gardening tasks.
- Linda Martin, a resident of 40 years thought young people would have more respect for their environment if they were more involved. Like others she wondered if the grass cutting could be increased because the long grass detracted from the flowerbeds. ●



OPENING CEREMONY OF THE NEW FISH VOLUNTEER CENTRE

The move of the FISH Centre from Sonning Common Village Hall to 'Springhill' on Kennylands Road is a momentous occasion in the history of this local charity. Founded by Ann Butler-Smith, thirty four years ago, FISH has been based in the SC Village Hall for 30 of those years. When she started the movement it was largely based on volunteers visiting lonely elderly people and a car service.

Over 60 people attended the grand opening ceremony on Saturday 10 May. Appropriate refreshments were served while a viewing of the spacious premises took place, now a suite of 4 rooms.

Fred Nickson, Chairman of FISH opened the ceremony with an expression of some delight at seeing so many friends and volunteers, both past and present, in attendance. Fred reminded the gathering that while living longer is good news for everyone it will provide a greater need for

support from the community, especially as so many remain in their own homes for longer.

He expressed his sincere thanks for the splendid job done by all the volunteers. BUT MORE ARE NEEDED! "There are lots of lonely people in our community, which covers the same area as the Health Centre, some 8,000 residents. With the larger premises I hope to extend the services that the FISH Volunteer Centre offers to home visiting and social activities which can make use of our new facilities".

Fred then invited the guest of honour, Andrew Peach, well known BBC Radio presenter, to cut the ribbon formally opening the centre. Andrew said he felt that this charity has been never more needed as so many families live far apart and can no longer depend upon that support. His final comment summed up the morning. "A move to the original concept of support for the lonely, which can take many forms, is dependent on the

increase in volunteers and the move to Springhill may well provide the trigger for this change and be a helpful addition to the work of FISH."

The AGM of The FISH Volunteer Centre will be held in the Sonning Common Village Hall on Monday 2 June starting at 2.00 pm - all are welcome. ●

Diana Pearman



Community Care Fund to close

After careful consideration, it is with much sadness and regret that the Chairman and Committee of the Sonning Common and District Community Fund have decided it is time to announce its closure.

There have been many happy years of fundraising for the Care Fund in its various forms since 1970 and in its later years we have been able to support The Sonning Common Health Centre, its staff and patients by funding the purchase of various pieces of equipment and by helping to finance education courses for both doctors and nurses. We have also helped with the cost of providing for the needs of patients wishing to be nursed in their own homes.

All this has only been made possible by the generous support of our local community through donations and legacies and by supporting our popular Tombola at the FISH Autumn Fayre. We thank every one of you for your assistance over the years. ●

Joan Thorne

[STOP PRESS]

Design the Village Sign Competition...

The committee of the Sonning Common Society were delighted and very impressed with the entries for the competition. There were many different elements of village life illustrated and we are hoping to incorporate several of them into the final design. Photographs and the final decision will be published in the next edition of the magazine.

A BIG THANK YOU!

from the Royal British Legion Women's Section to those who attended Mad Hatters Tea Party. £525.05 was raised. ●

MARKING TIME

TEACHERS BEHAVING BADLY, ACTED WITH APLOMB!

Chiltern Players' production Marking Time showed teachers under stress at their worst. An enthusiastic audience saw teachers throwing scripts in the air in frustration, slamming doors, ridiculous love entanglements and petty feuding of the sort you'd only find in schools (obviously not local ones). An additional challenge for actors was acting vigorously in the round. They pulled it off with aplomb. They're now back to the drawing board to conjure something wonderful for the autumn. ●



CHILTERN EDGE HORTICULTURAL SOCIETY SPRING FRONT GARDENS COMPETITION

The judges were two members from the society and two from the Village Gardeners who were all impressed with the blaze of spring colours and the obvious devotion of the owners of all 18 gardens nominated.



1ST PRIZE - GEOFF MITTON CUP

Joyce and David Brewer in Woodlands Road - A truly outstanding garden full of variety and colour

2ND PRIZE Morris cottage garden in Westleigh Drive - A great number of unusual plants giving pretty foliage and colour

3RD PRIZE Pamela Franklin's garden in Woodlands Road - Immaculately laid out beds and borders

The Village Gardeners' efforts were greatly admired for their work on the beds, tubs, verges and banks in the village making them so bright and cheery.

The next front garden competition will be held in the month of July, if you would like to enter or nominate somebody else's garden in the village contact Maureen Stevens on 0118 972 4779 or our Chairman Mark Richards on 0118 972 3939 for more information. ●

2014 Village Quiz results

Many thanks to everyone who took part in this year's Village Quiz. There were 22 teams of five or six players which gave us a very full primary school hall. By supporting the quiz, the bar and the raffle, over £600 was raised for PTA funds. The final scores and placings were as follows:

1. Wishful thinkers - 112 points
2. Two Hoots - 111
3. Mongooses - 110
4. Martin's Team and Common Readers - 107
6. Comets and Dead Rats' Society - 106
8. Minus I.Q's - 103
9. FISH, Bejabs, Graham's team and P and O - 98

Closely followed by Wild Grovers, Between the Covers, Teechers, On the Tiles, The WI, Blotters, Dad's Army, Joy's team, Galloping Governors and Green's Gremlins. Here's hoping everyone will want to take part again next year! ●

Mel White



PRE SCHOOL CHILDREN DELIGHTED WITH NEW PLAY EQUIPMENT

Installed over the Easter holidays at Sonning Common Pre-school the children now have a new play house, erected by parents, a performance stage (lots of singing and dancing is now seen) and a play centre consisting of slides and a climbing wall.

Thanks to the hard work of the fundraising team, both past and present, as well as the parents' support for the school, this has been made possible. Additionally a small grant came from Oxfordshire County Council. Sonning Common Pre-school is a community based charity and without fundraising and parents' help they would be unable to purchase such equipment. Our next event is our Summer Fair on Sunday 29 June.

Clare Saunders, Pre-school Manager said, "What a fantastic achievement to be able to raise enough money to support the children's outside learning experience. We are focussing this year on enhancing our outdoor environment and this is the very start of exciting things to come."

Claire Hutchins, Chairwoman for the pre-school committee said "We are over the moon, our spacious outside area has been transformed, from mud kitchens to a fab stage area. What more could children ask for!!! This will make such a difference to the quality of the children's play. We are very grateful to all those involved who have made this happen."

Sonning Common Pre-school still has spaces available from Sept 2014. Please visit and contact 0118 972 4760, or info@sonningcommonpreschool.co.uk

Sessions are available from 2 and a half yrs, 9am-3pm. ●

NO ONE CAN RAIN ON OUR PARADE OF PEDALS!

Sonning Common has proved itself healthy at heart once again. Five hundred and fifty local people ignored the woeful weather forecast, put on their waterproofs and joined the village's annual On Your Bike ride.

"We were surprised no one dropped out at the promise of heavy downpours," said organiser, Penny Snowden. "It just goes to show how enthusiastic everyone is about this event. It's grown into a huge family-friendly community phenomenon - one that's become part of the DNA of the village. And it didn't rain on us after all!"

"We live in an amazing place," said Penny, who founded On Your Bike 8 years ago, "Not only are we surrounded by gorgeous leafy lanes that we can cycle along safely with our children, but we also seem to have an endless supply of neighbours and friends who love outdoor exercise as much as we do."

"We want to say a huge thank you to the dozens of volunteers and sponsors -

without you, this event simply would not happen. Organising something on this scale is hard work, but it's utterly uplifting to see all those smiling faces heading off year after year, and to see riders still smiling when they return!"

The long term aim is to reintroduce an On Your Feet walking event, but we need much more volunteer help to make this possible."

On Your Bike 2014 has raised well in excess of £3000, which will be shared between Sonning Common Primary School, Sue Ryder & our local Air Ambulance. Thank you to AWCycles, Sonning Common Health Centre, our sponsors, many volunteers as well as all those who rode with us this year! ●

Nikki Hampton



ON YOUR BIKE RIDE 2014 SURVEY RESULTS

The Neighbourhood Development working party attended the 'On your Bike' 2014 to display the information about the progress of the plan. They also ran a survey asking the participants to complete a short questionnaire about the recreation facilities in the village. The results are listed here.



Do you agree that Sonning Common's NDP should include provision for new sports/exercise facilities?

Yes 127 No 1 Inconclusive 0

Which new facilities would you like to have?

Indoor sports hall with exercise gym

Yes 111 No 10 Inconclusive 7

Asphalt multi-purpose games area

Yes 111 No 4 Inconclusive 13

Outdoor pitches (cricket, football)

Yes 93 No 12 Inconclusive 23

Jogging track

Yes 68 No 31 Inconclusive 29

When asked which other facilities would be chosen, a swimming pool was the most favoured, followed by cycle lanes/tracks, skate park and tennis courts. ●

IT'S A LONG WAY TO BRIGHTON



Ten cyclists, all regulars of the Butcher's Arms pub, have raised more than £2,000 towards Sonning Common Skatepark. They cycled from the village to Brighton on 26 April, completing 92 miles in just under 12 hours. It would have been 78 miles, had the leaders not gone astray with the navigation!

Pub landlord Rob Blues said: "It was hard work. We cycled the whole way and not one person got off to push their bikes up hills. We are really pleased with what we raised for the skatepark."

He said the idea of raising money for the skatepark came about when some pub regulars, who had grown up in the village, were talking about the continuing lack of facilities for young people. Now in their late twenties, they recalled how they were promised a skatepark when they were young.

Another regular, councillor Dirk Jones, who is on the parish council's Skatepark Working Group, suggested they might

consider contributing towards the skatepark project, which was well underway and just £20,000 short of its £100,000 fundraising target. They agreed to do a sponsored bike ride.

Now, with the bike ride behind them, the pub regulars are already thinking about their next fund-raising challenge for the skatepark. The Mad Hatters Club is planning to design and build a BMX-powered raft to take part in Thames and Kennet Marina's annual raft race on 10 August.

For further information see:
sonningcommonweb.co.uk/skatepark ●

FROM THE EDITOR:

The five page 'In Focus' article in this magazine provided residents with an update on the evolving Sonning Common Neighbourhood Development Plan (SCNDP).

The purpose of producing the 'not to scale' street map, in the centre pages was simply to explain to residents the status of the SON sites. It showed which sites had been withdrawn by Landowners, those that the AoNB officer thought unsuitable and the ones that were remaining and were still under consideration.

A number of residents were unsure of the location of each of the sites and the choice of a user-friendly street map format was intended to provide further accessible information.

There was an omission on the map, Stoke Row Road was left out and the shaded area on the map also caused some unintended confusion and upset. Stoke Row Road has been added to the map and the shaded area is now within the parish boundary.

The amended map now appears on the website, together with all of the magazine articles that have covered the SCNDP since its inception. The Neighbourhood Development Plan applies to the parish of Sonning Common, as well as SON 13 in Rotherfield Peppard Parish and SONs 4 and 15a in Kildmore End Parish. ●

NEIGHBOURHOOD DEVELOPMENT PLAN UPDATE

Our web site, www.scp-ndp.co.uk has recently been updated and populated with information and material covering the work done. This includes Frequently Asked Questions, the Scoping Report, maps, photos and information on SON Sites going forward for future consideration. All of the articles about the Sonning Common Neighbourhood Development Plan, published in this magazine since 2012, are also now on the website. Please let us know your thoughts and opinions on issues surrounding the SCNDP.

The Scoping Report is an important document. It describes and locates information about Sonning Common, its services amenities and infrastructure, as well as the surrounding landscape and its geographical position in South Oxfordshire. It is a template for the Neighbourhood Development Plan, on which the aspirations

for a sustainable future, for Sonning Common and its neighbourhood are laid. Thus it looks at the objectives, key messages, problems and trends affecting the sustainability issues involved in providing many extra homes in the village between 2017 and 2027.

It is also a consultation document. It has been sent to statutory bodies, authorities, schools, organisations and groups involved in the life and work of South Oxfordshire and its neighbouring areas; SODC, Chilterns Conservation Board, NHS Trusts, local schools and health providers, just to name a few. Comments and critiques sent back to us will be used to amend the Scoping Report and its subsequent role in developing the NDP.

We have written provisional design statements and proposals for each SON site going forward for development. During May we will have had discussions

with landowners about our proposals for their sites, which will include homes, recreation, amenity green space and employment opportunities.

In June we will hold a series of meetings with residents living adjacent to each potential development site, one meeting per site. These resident meetings will be held on 4, 9 and 11 June (each being an evening meeting) and Saturday 7 June (two meetings, one in the morning and the other in the afternoon); a total of 5 meetings. These meetings will be held in the Village Hall and residents will be invited to attend via a letter.

Your views are important and will be listened to and noted carefully. They will be part of the process leading to the final design statements and proposals for each site. ●

Barrie Greenwood




Moore's Painting, Decorating & General Maintenance Services

Spruce up your Home & Garden!
5% Discount when you quote: SCMAG

*Interior/Exterior Painting, Glossing, Staining. *Wall Paper Removal/Hanging. *Damaged Walls/Woodwork Repair.
*Repair & Maintenance of Internal/External Fixtures & Fittings.
*Fences/Sheds Erection & Repair. *Fence, Shed, Decking – Cleaning, Staining, Painting. *Garden Clearance/Maintenance

We invite you to contact us for a free, no obligation quotation.

Call: 01189 722002 or 07595 906940
Email: info@moorespds.co.uk Web: www.moorespds.co.uk




Oak Grove Garden Services

LANDSCAPING (HARD OR SOFT)
FENCING • TURFING • PATIOS • HEDGING
WATER FEATURES

James Watkins

'Oak Grove' • 13 Grove Road • Sonning Common • Berkshire RG4 9RH
Telephone: 0118 972 2659

GIRL POWER
Female Electrician
Local - Honest – Reliable
Please call Jess
07870 507749
for all your electrical needs



PEPPARD BUILDING SUPPLIES **FIRST CHOICE FOR THE PROFESSIONAL**




***FREE LOCAL DELIVERY**

- Competitive Trade Pricing
- Bulk Bags
- Specialist Insulation Stockists
- Indian Sandstone
- Bricks/Blocks /Aggregates
- Trade Shop
- Plenty of Parking
- Web Offers!

Call **0118 972 2028** / Sat Nav **RG4 8XA**
Visit www.peppardbuildingsupplies.com

*Terms and Conditions apply




Byways Dental Practice

Quality Care Dedicated Team

Byways provides friendly and professional dental care and is located in the tranquil surroundings of beautiful Checkendon village. Our services include:

- + All aspects of general dentistry
- + Teeth whitening and cosmetics
- + NHS for children & anyone in full-time education
- + Affordable payment plans
- + Flexible opening times
- + Ample free car parking

To book an appointment or for more information call us on 01491 680412 or email info@bywaysdental.co.uk



Main St, Checkendon, RG8 0SP Tel 01491 680412

Computer Problems?
Is your PC outdated, misbehaving, virus infected?

Fault Diagnosis, Maintenance & Upgrades,
Data Recovery & Migration, Virus Cleaning,
Networking, Broadband and much more.

Call Robin Piercey
at Influential Computers on
01491 680036
or visit www.influentialcomputers.com

GRAHAM S Painting & Decorating – Fascias & Soffits
M AINTENANCE Door & Window Fitting – Plumbing

Fitted Bathrooms – Floor & Wall Tiling – Fencing & Decking
Wood & Laminate Flooring – Sheds Supplied & Fitted
Garden Maintenance – Guttering & Flat Roofing etc...

FREE ESTIMATES 0118 972 3114




JL COX Plastering

- Ceilings • Walls • Dry Lining • Rendering
- Pebble Dashing • Patch Repair Work

Call Jamie on **01189 242861**
Or Email : jlcx.plastering@hotmail.co.uk

Robin James
OPTICIANS



- Comprehensive eye examinations
- Full contact lens service
- Free specs for children
- Extensive range of designer frames
- Main agent for Zeiss and Rodenstock lenses
- Free parking


0118 947 2099
www.robinjames.co.uk
44 Church St, Caversham, Reading (opposite Waitrose)

BONNER LOCKSMITHS
INSURANCE APPROVED

**DOORS & WINDOW LOCKS SUPPLIED & FITTED,
CHANGED OR UPGRADED (BS3621)**

**DOMESTIC & COMMERCIAL PREMISES
DIGITAL LOCKS • BARS**

FREE NO OBLIGATION QUOTE

ALL AREAS COVERED  CALL OUT SERVICE

01491 680216 **CRESTWELL HOUSE** **FULL MEMBER OF BRITISH LOCKSMITH INSTITUTE**

Beech Lane, RG8 0PX • Woodcote Nr. Reading
PROPRIETOR: S. J. BONNER

Wisepower

ELECTRICAL CONTRACTORS LIMITED

T. 07810 798798 / 0118 972 2767
E. wisepower@btinternet.com
W. wisepowerelectricalcontractors.co.uk
4 Mullens Terrace, Chazey Heath, Reading, RG4 9ES

Customer Satisfaction our Priority

- Local, Reliable, Honest, Experienced Contractor
- Estd. over 30 years
- All electrical works undertaken including: new build, extensions, re-wires. outside/garden works
- Small or large works
- Test and inspect
- Fire alarms

Oxfordshire Schools and NHS Trust Approved Contractor.

Kidbys
Sheds & Timber Buildings

Tel: 0118 972 33 80
Kidbys Yard, 28 Kennylands Road
Sonning Common, Reading, RG4 9JT
www.kidbys.co.uk Fax: 0118 972 10 02

**CURTAINS,
BLINDS, PELMETS,
TIE BACKS ETC.**

**ALL AT COMPETITIVE
PRICES**

**CALL CAROLINE ON
0118 954 2448
OR
0781 561 0007**

Time 4 Pilates 

Want to look and feel great!!
Try Pilates – controlled, yet gentle exercise

Classes in Sonning Common area
Including Ante and Post Natal

Mondays / Tuesdays / Thursdays
Beginners and Intermediates
Max 12 in Group (6 in Pregnancy classes)
Private sessions also available

Christine Brook – Member of Body Control Pilates® Association
Ring 07789 717017 or email chris@time4pilates.co.uk
Website at www.time4pilates.co.uk

**VILLAGE
BARBERS**

0118 972 3930
**24 PEPPARD ROAD
SONNING COMMON**

**£1 OFF WITH THIS VOUCHER
CHILDREN'S PLAYROOM**

CUT - £12 ONE GRADE - £9 TWO GRADES - £10
CUT & BLOW DRY - £13 CHILDREN UNDER 10 - £9
CHILDREN 10 TO 16 - £11
SENIOR CITIZEN - £8 RESTYLE - £15

SONNING COMMON PRIMARY SCHOOL
SUMMER FAIR
 Saturday 14th June, from 12 till 3pm

OWENS ANIMALS
 CIRCUS SKILLS WORKSHOP
 STALLS • RAFFLE • GAMES
 MAYPOLE DANCING
 YEAR 6 JAZZ BAND
 HOMEMADE CAKES
 BBQ • BAR • TEA ROOMS

let's of fun for everyone!

PTA

Chiltern Edge Bridge Club

Tuesday evenings 7.30pm to 10.30pm
 Christ The King Hall
 Visitors welcome / £3 per night table money
 Contact Ian Hodgkinson 0118 947 9945

Friendly Fridays in the Library

Everyone welcome everyone from 10am!

SCRABBLE 6 & 13 JUNE

'KNIT & NATTER', 'CROCHET & CHAT',
 AND 'SEW & SO' 20 JUNE & 27 JUNE

OR just come for coffee/tea and a chat!

ADVANCE NOTICE

Annual Lunch

Friday 5 September - Italian

Return of the Capaldi Quiz

Friday 19 September - Village Hall

Proceeds to Skate Park fund/Village Gardeners



VOLUNTEER LOCK KEEPERS NEEDED ON THE THAMES

If you would like to find out more about volunteering on the Thames and to receive an information pack and application form, please contact the Volunteer team on 01491 828360 or email thames.volunteers@environment-agency.gov.uk

Sonning Common & District Tennis Club

2 good quality hard courts. Available all year round. On your doorstep.

NO Court booking / NO Dress code (except soft soled shoes) / NO Club sessions or tournaments

JUST casual, informal tennis for families, learners, stars and everyone

LOW COST ANNUAL SUBSCRIPTION CHARGES:

Family	£30
Single adult	£20
Junior (under 18)	£10

WHERE? Bishopswood Sports Ground - On the Gallowstree Common Road between the Greyhound and Reformation public houses

For more details please contact:
 Dave Pinder (01491 680324)
 Judy Pitson (0118 972 3294)

PEPPARD BOWLS CLUB

Did you miss our "Taster Days" in April?
 Why not join the clan?

- + Club Afternoons on Mondays and Thursdays
- + Excellent facilities - a green to be proud of
- + Plenty of free parking
- + Friendly members to make you welcome.
- + Fixture list of interesting games

Call Jenny, our Membership Secretary on 0118 924 2617. She is waiting to hear from you. Don't delay - the summer will soon be over

Felt-makers get together

READING/OXFORD AREA (IFA)

Sonning Common Village Hall
 10am - 4pm / £10 per day

Bring lunch and a project to work on
 Phone Gwen: 07808 011887

Sundays in 2014: Jun 15th,
 Jul 13th, Aug 10th, Sept 28th,
 Oct 12th, Nov 2nd

EXHIBITION DAY November 30th

South Chiltern Choral Society presents -

A Very SPECIAL Summer Concert

Gwyn Arch conducts his farewell concert with SCCS



Captain Noah and his Floating Zoo
Michael Flanders & Joseph Horowitz

Plus - A selection of choir favourites

With - Reading Male Voice Choir

Tickets: £16, £14, £12 (U21s half price)
from Nicola Woodman: 0118 9891606 or via our website - www.southchilternchoralsociety.org.uk

Sat 5th July 2014 at 7.30 pm

CONCERT HALL
Thames Valley University, Reading RG4 7UT

Registered Charity no. 251542

Antique & Collectable Fair

Thursday 5 June and 3 July 2014
Caversham Heath Golf Club, Mapledurham RG4 7UT

50p entrance fee / Stallholder table cost £20
50% donated to Helen and Douglas House charity

abantiquo1900@gmail.com Tel: 00 44 (0)7873 226689
Twitter: @abantiquo_ Facebook: Ab antiquo

WYFOLD RIDING FOR THE DISABLED

(Lime Avenue, off Stoke Row Road)

Fun day

SATURDAY 28 JUNE, 11AM - 2.30PM

FREE ENTRY

Riding and driving displays, musical rides and a pony parade / Hot dogs, Ice Cream, Stalls / Tombola, home-made cakes, kids games

Raffle with great prizes including a week in a holiday cottage, hot air balloon ride and dinner for 6 cooked in your own home

www.wyfoldrda.org.uk 0845 450 7017


Workshops for the whole of June, July and August THURSDAYS 8PM

Christ the King Hall, Sedgewell Road

Play readings WEDNESDAY 4 JUNE & 2 JULY

Reformation, Gallowstree Common

Buy a drink - read a play. No pressure. But do buy a drink!
Information from Rosemary House 0118 972 2632



Sonning Common Pre-school

Annual fund raising event

Summer Fair

Sunday 29 June, 11.30 to 2pm in the Pre-school garden. Bar, BBQ, Silent Auction, bouncy castle, tombolas and lots of games.

All welcome - Adults £1, children free.



Sonning Common Village XI Fixtures 2014

DATE	OPPONENTS	VENUE	START
April 27	Ipsden	A	14.30
May 4	Nettlebed	A	14.00
May 11	Henley	A	14.00
May 18	Wargrave	A	14.00
May 25	Whitchurch	A	14.00
June 7 (Sat)	Broadwindsor (Tour)	A	14.00
June 8	The Fox, Corscombe (Tour)	A	14.00
June 22	Crowmarsh	A	14.00
June 29	Swyncombe	A	14.00
July 6	Peppard	A	TBA
July 13	Holton & Wheatley	A	13.30
Aug 3	Harpsden	A	14.00
Aug 10	Kidmore End	A	14.00
Aug 24	Moulsford	A	14.00
Aug 31	Pangbourne	A	13.30
Sept 7	Highmoor	A	13.30

VILLAGE COFFEE MORNINGS

Sonning Common Village Hall

WEDNESDAY 4 JUNE & MONDAY 14 JULY
10.30am to 12 noon

This event is open to everyone in the village

ALL WELCOME & FREE ENTRY

Coffee/Tea & Biscuits
(small donation appreciated)

Come and meet people, bring along friends, chat or just relax.

Book and Bric-a-brac Table

Hosted by Sonning Common Women's Institute
Profits to local projects

Call My Driver

**Friendly & Reliable
Taxi Service**

Based in Sonning Common

07796 688477

T.C. FULLER PLUMBING & HEATING

- Installation • Maintenance • Service • Repair
- Boiler replacement, heating system upgrade & adaptations, power flush.
- Hot water cylinder replacement.
- All plumbing work undertaken.
- Bath/Shower rooms, water softeners-salt supplied.
- No call out charge • Free estimates • Fully insured

Tel: 0118 9724097
Mob: 07800 914 880



225032

Shaun Guard TV AERIAL SERVICES

- Poor Reception Solved - Aerials repaired & supplied
- TVs - Hung on your wall for you. Also supplied & tuned
- Extra TV Points - For aerial and Sky (In HD!)
- Sky TV - Also Foreign Language TV

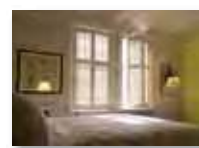
Call Henley-on Thames 01491 699114

A part of  OXFORD AERIALS

SB

SMART BLINDS & SHUTTERS LTD

Perfection by Design



Family run business that cares Fantastic range of samples
All made to your exact needs Free quotation & fitting

Why are we so different? Because we love what we do!

Showroom: 118 Henley Road, Caversham, RG4 6DH

0118 950 9449

www.smartblinds.org

Family Hairdressing any age & any style

*.....and all in the comfort of your
own home.....*

Ring Maureen on
0118 972 1074

DK Builders

Daren Kilroy



BRICKLAYING, EXTENSIONS,
GARDEN WALLS, PATIOS ETC



OVER 20 YEARS EXPERIENCE

CAVERSHAM, READING 07951736745
0118 3759407

Providing a professional and friendly legal service to the
local community and beyond for over 80 years!

- Residential & Commercial Conveyancing
- Landlord & Tenant
- Company & Commercial
- Directors & Shares
- Employment
- Wills & Probate
- Trusts & Tax
- Powers of Attorney
- Divorce & Family
- Mediation
- Disputes
- Debt Collection
- Notarial Services

Goring: 01491 879100
Pangbourne: 0118 9842266

info@richardwilsonlong.co.uk
www.richardwilsonlong.co.uk

 **Richard
Wilson Long**
Solutions



gunningplumbing.com
• plumbing • heating • gas •

**ALL DOMESTIC PLUMBING, HEATING, & GAS WORK
INSTALLATIONS, REPAIRS, & EMERGENCIES**

**CAVERSHAM BASED
GAS SAFE REGISTERED ENGINEER**
SERVING READING & THE SURROUNDING AREA

CALL ANDREW ON 07815 304 931

www.gunningplumbing.com



From food waste to electricity

A LOW IMPACT, GREEN INDUSTRY WITH AN EXCELLENT SAFETY RECORD

By JO STOVES



When you scrape off your plates into the food waste bin, do you every wonder what happens next?

Recently I had the opportunity to visit the 5 hectare Anaerobic Digestion Plant at Cassington to find out. **Surprise one**, was to find that the plant is unobtrusively set among flooded gravel pits and looks very much like any other small industrial site. **Surprise two**, was to find that it did not smell as unpleasant as I had imagined. Yes, of course it did smell (sweet and sickly), but it certainly didn't make me screw my nose up or feel ill. **Final surprise**, was to find that there is an almost identical plant at Benson which treats food waste from Sonning Common.

At its most basic, Anaerobic Digestion converts food waste (which would otherwise go to landfill) into heat, electricity and a nitrogen rich liquid fertiliser known as digestate.

Lorry loads of food waste cross weighbridges both on the way on and off site, so that the amount of food waste can be calculated. Waste is tipped into a pit and mixed with liquid commercial waste from breweries and dairies. It is chopped and pulverised into what is

laughingly know as "soup" which is then pasteurised to remove any bad bacteria such as salmonella. This process takes 2 hours at 70°C. It uses recycled heat and is carefully monitored by staff and is subject to Defra checks.

The soup is then pumped into the first of five vast concrete digesters. Over 100 days the soup is kept at body temperature and continuously stirred and pumped through all five digesters. Needless to say, the bio-gas given off is highly volatile, so samples are taken daily and there is an emergency flare stack to burn off excess gas should it be necessary. The bio-gas given off by the soup collects in the roves of the digesters and the cleaned methane is converted into electricity using 2 large on-site engines before being fed into the National Grid. Enough electricity to power over 4,000 homes is produced.

The remaining digestate, when the process has been completed and as much energy as possible has been extracted, is a direct replacement for inorganic fertilizer. It can be pumped directly into tankers for distribution to farms within a 10 mile radius. But as it cannot be spread on the land during the winter, (it may contaminate water

courses during wet weather), on-site lagoons allow for 6 months storage.

So, there you have it. 120 tonnes of food waste goes into Cassington every day and every 4 hours a few tonnes are added to the digesters. A low impact, green industry with an excellent safety record producing a constant supply of electricity and fertilizer, using heat recycled from its own gas engines and saving 40,000 tonnes of food waste from going into landfill.

Tours of Cassington are very popular and after my informative morning there I understood why. I came away determined to try to cut the amount of food waste I put out on the kerbside each week, but equally confident that Anaerobic Digestion is a very positive way of dealing with this massive, ongoing problem.

"Anaerobic digestion will become more important as the world wakes up to the requirement that sustainability is all important in a more populated world. The plant at Cassington provides both renewable energy and an organic fertilisers and make a valuable contribution to a greener and more cost effective economy." Harry Waters Commercial Director ●



Properties we've recently sold in Sonning Common

Here at Bridges we continue to experience a high demand for property in and around Sonning Common. If you're considering selling this Spring please contact us for a no obligation market appraisal.

1 Church Road Caversham Reading RG4 7AA
0118 946 2121
www.bridgesproperty.co.uk

BRIDGES
Independent Estate Agents

CHRISSIE PHILLIPS-TILBURY

A VILLAGE TO BE PROUD OF

By ROS VARNES



Like the seeds they plant, the Village Gardeners are continuing to grow, flourish and transform Sonning Common.

The community gardening group has achieved much since its formation four years ago and with its entry into the Britain in Bloom competition this year there is a great deal yet to come.

Founding members Chrissie Phillips-Tilbury and Jill Greenwood recall how the group got started, following a call to South Oxfordshire District Council (SODC) in late 2009.

Chrissie and Jill were concerned about how untidy the village centre flower-beds were so Chrissie rang SODC to ask whether they could tidy them up.

"An official informed me that I could not touch the flower-beds unless I had both a street operatives' license and a health and safety certificate but then changed his mind and said, 'You can do it but only unofficially'!. This galvanised a small group of friends to get together to reclaim the flower-beds," says Chrissie.

What began with a little gentle weeding of the flower-bed outside Occasions has turned into a movement to clear, tend and cultivate all available green space in the village.

Now numbering up to 25 volunteers, the Village Gardeners meet on the first Sunday and third Thursday of every month to work.

Chrissie is the first to admit she is no gardener. She is the motivator of the group. The group is made up of

expert gardeners and those with little experience or none at all. It's a balance that clearly works as the Village Gardeners' long list of achievements testifies.

To date volunteers have planted 7,000 bulbs, built new flower-beds at the back of the Co-op car park, cleared and re-planted the flower-beds in front of the One-Stop, Occasions and the Indian restaurant and erected a plant-feature telephone box – with the help of a generous benefactor – on the Green Lane corner.

Recent projects have included building a planter on the corner of Wood Lane/Woodlands Road and filling it with herbs and vegetables to which residents can help themselves. Wildflower seeds have been sown at the Millennium Green and on Peppard Road and Woodlands Road; a flower and shrub-filled wooden trough installed at the Peppard Road/Kennylands Road triangle; and the Heath and Watkins bed has been completely transformed.

All this would not have been possible without local support. Many local businesses, organisations and individuals have helped to fund and support the work.

Some community groups and organisations continue to work in partnership with the Village Gardeners including Chiltern Edge School, Sonning Common Primary School, Sonning Common Library, Thames Valley Police and the Guides and Brownies.

The Village Gardeners are particularly

proud of their work with local children. For the second year running they have planted seeds with the Brownie and Guides groups outside the Scout Hut in Baskerville Road and they are planting fruit bushes with children at the primary school.

Encouraged by being given an 'outstanding' rating in the Thames and Chiltern's Britain in Bloom 'It's Your Neighbourhood' section last year, the Village Gardeners have decided to enter the national Britain in Bloom competition this year.

This will entail a two-hour village tour and presentation to the competition judges in mid-July. The competition will be judged on horticulture, community effort and conservation and recycling.

Said Chrissie: "It's vital for us that people look around them and report any damaged walls to the Parish Office. People can do their bit to help by weeding and sweeping outside the fronts of their properties. This competition is about the look of the whole village and the community working together." ●



Red Kite Electrical



Top quality electrical & Solar PV installations
Now back working in Sonning
Common and the South Chilterns



sparks@redkiteelectrical.co.uk

www.redkiteelectrical.co.uk

0118 907 1834

0788 273 7402



Jefferys Consultancy Services Ltd.
Accountancy Services

CIMA

An Accountant That Will Save You Time & Paper Work

Excellent customer service & free initial consultation

- Self-Assessments
- Corporation Tax Returns
- Business Advice
- Accounts

Call: 0118 9722611

Email: Keith.Jefferys@jcslimited.co.uk

CERAMIC WALL & FLOOR TILING

Adhesive / Grout / Trims Supplied
Floor Levelling & Plastering
Free Estimates & Advice

Call Mick 0118 901 1777 / Mobile: 07841 586003

COLLINS, DRYLAND & THOROWGOOD LLP SOLICITORS

12 Hart Street Henley-on-Thames RG9 2AU

Please contact Mrs Wendy Holmes
(formerly of our Sonning Common Office)

Telephone: 01491 572323

email: wendyholmes@collins-dryland.co.uk

THAMES VALLEY GYMNASTICS CLUB

Bird Wood Court
Peppard Road
Sonning Common

(Registered Charity No. 1062939)



- ◆ Modern Gymnastics facility with "state of the art" equipment and dance studio
- ◆ Elite/Competitive squad coaching to Regional/National levels
- ◆ General Gymnastics classes for Boys/Girls - all ages/abilities
- ◆ Pre-School programmes
- ◆ Ballet Classes
- ◆ Play Gym for the Under 5s (Tuesday & Thursday a.m.)
- ◆ Gym Birthday Parties
- ◆ Room for hire

*For further information, please call in or telephone
Kevin Cassidy, Club Manager, on 0118 972 4401*

HEIGHTS Tree Care

- All Aspects of Tree Work
- Hedge Cutting
- Private and Commercial

Fully Qualified Professionals

£5 Million Public Liability Insurance

Laurence Williams

Phone: 0118 9484274

Mobile: 07813 586 735

Email: info@heightstrecare.co.uk

Web Site: www.heightstrecare.co.uk



Stafford & Son

Local Garden & Building
Maintenance Services

Offering services in all aspects of garden and
grounds maintenance, be it large or small, in-
cluding hedge and tree work.

Fencing, landscaping, pressure washing and
general ground works.

Interior and exterior building maintenance,
including gutter repairs / clearing and handy
man services.



Andrew Stafford

Phone: 01491 642 191

Mob: 07899 980 137

Rebecca Hodson Acupuncture

LicAc MBACc BSc

*Traditional acupuncture for your
health and well being*

www.rebeccahodsonacupuncture.com

Tel: 07711 563117

Church Lane Rotherfield Peppard
Henley-on-Thames Oxfordshire RG9 5JR



BACc Member
www.acupuncture.org.uk



SONNING COMMON PARISH COUNCIL – ANNUAL PARISH MEETING 3RD READING BRIDGE DEBATE



A lively meeting was held in the Village Hall on Monday 10 May when the Annual Parish Meeting, open to all residents, focussed on the issue of a third bridge over the Thames. A panel of speakers representing Reading Borough Council, Oxfordshire County Council, South Oxfordshire District Council and our own Parish Council presented varying viewpoints on the potential benefits and disadvantages of building a third Thames Bridge linking South Oxfordshire with Reading.

The issue of a third bridge (in addition to the Reading and Caversham bridges) has raised its head on many occasions during the last 40 years. The current debate has been fuelled by the traffic chaos caused by the recent closures of the smaller bridges at Sonning (due to flooding) and Whitchurch (for structural work).

Councillor Tony Page (Deputy Leader of

Reading Borough Council) stated that Reading Borough Council had supported a third bridge solution and felt certain that it would have equal benefit to the communities both north and south of the river. He made a strong appeal for OCC, SODC and Sonning Common Parish Council, together with other parishes to come together and objectively discuss the Reading Borough Council proposals.

Councillor David Bartholomew from OCC and Councillor Paul Harrison from SODC both then spoke against the proposal, raising concerns of inadequate road infrastructure in the south Oxfordshire villages and countryside which would be unable to cope with the likely huge increase in traffic. The building of the M25 as a solution to density of road traffic and its current unplanned high volume use was cited as an example of what would occur with a new bridge on the lines of 'build it and THEY will come'!

Parish Councillor Leigh Rawlins presented the current view of SCPC that a third bridge is needed but only if certain conditions can be agreed, primarily that there would be no question of Reading using a third bridge to claim territory in south Oxfordshire.

After many questions from the floor often expressing some very strong feelings and final summaries from the panel of speakers, Douglas Kedge, Chairman of SC Parish Council, closed the meeting by thanking all attending for their valuable contributions. ●

Editor's Note: Many other issues were raised in this meeting and the topic is a complex one and worthy of more detailed information and consideration than can be given in this brief article. Consequently this subject will be revisited in the August/September edition of the magazine.

A COLOURFUL EVENT: AGM SONNING COMMON MAGAZINE

Supporters of the magazine were totally engaged by a fascinating pre-AGM talk on The History of Colour Printing from our local resident and world expert on Lithography Mike Twyman (Professor Emeritus of the Department of Typography & Graphic Communication at the University of Reading). Mike entertained his audience with a highly accessible and brilliantly illustrated presentation on the complexities of producing his book on the evolution of colour printing. Following the very

well received presentation the audience were able to view and appreciate the many exhibits displayed around the hall.

Opening the AGM Magazine Chairman Geoff Adams reflected upon the significant of the past year in the magazine's history, notably its 40th anniversary. He praised the work and dedication of the team who produce and distribute the magazine and thanked the committee for all their hard work and commitment. He did

stress that the committee NEEDS SOME MORE VOLUNTEERS, including a secretary. Concluding his remarks Geoff expressed his personal view but one he had heard voiced from many sources 'that the Sonning Common Magazine goes from strength to strength'. ●

Diana Pearman





POLICE TRAINING CENTRE opens its

By ROS VARNES



Members of Sonning Common Parish Council enjoyed a fascinating tour of the Thames Valley Police training centre in West Berkshire recently.

At the special invitation of Colin Boyes, the village's Police Community Support Officer (PCSO), they spent several hours touring the training centre and Thames Valley Police Museum at the White House, Sulhamstead.

First on the schedule was a visit to the Dog Section, which was set up in 1952 and is one of the oldest facilities of its kind in the country. Staff at the centre help to train and care for the force's dogs.

German shepherds are mostly used for finding property and missing people while spaniels and labradors have specialist roles including sniffing out drugs and explosives.

The force's Specialist Search and Rescue Team is based at the training centre. The Thames Valley Police team is one of only 13 in England, Scotland and Wales and the specialists are often called out to help other police forces.

Their work is extremely challenging and definitely not for the faint-hearted! On most occasions divers are working in conditions with zero visibility and, attached to a lifeline, they have to search for items as small as bullets, gun cartridges and jewellery. They also have to recover bodies and vehicles from water.

The five-member team can sometimes be called upon to search for weapons and explosives - often in confined



doors

BELOW LEFT-RIGHT:

Behind the wheel: Councillor John Stoves ●
 Police posts provided early communications ●
 The White House, Sulhamstead ●
 Councillors (from left) Douglas Kedge, Carole Lewis and Colin Reynolds ●
 A Thames Valley Police car ●
 The parish council group visits the Specialist Search and Recovery Unit vehicle ●

BOTTOM LEFT:

The Sonning Common Parish Council contingent with PCSO Colin Boyes outside the White House, Sulhamstead. ●

BOTTOM RIGHT:

Councillor Gail Noble predicts a riot ●



spaces such as in drains and culverts - prior to important public events and VIP visits.

Thames Valley Police has a fleet of up to 500 vehicles, which are maintained at the centre, while the purpose-built Firearms Training Unit is also on-site.

The training courses run by the firearms' unit focus on helping officers to make sound judgement calls about the level of force required to control a situation. Most firearms incidents are resolved through communication and negotiation.

As part of the tour the councillors visited the Thames Valley Police Museum in the historic White House,

part of which dates from the early 1700s. Among the most interesting exhibits are artefacts from the Great Train Robbery on 8 August 1963, including the actual Monopoly board which the crooks played on with stolen money while hiding out at a farmhouse.

Speaking after the visit, parish council chairman Douglas Kedge said: "This visit, apart from being very enjoyable and interesting, is an indication of the commendable community links established between our local police and the village." ●



Property Maintenance

Plumbing, Electrics, Decorating,
Woodwork, Roofing, Brickwork, Drains,
Kitchens and Bathrooms
All Exterior, Groundworks and Garden work
Property Management & Lettings

Please call Roger on 07752 759908

colbeckproperty@gmail.com

Computer repairs

Specialist in home-user & small business support:
Virus removal, slow computer, data backup,
data recovery, booting problems, hardware diagnosis

Over 10 years experience

0759 898 3292 jason@millwardit.co.uk

millwardit.co.uk

TOMALIN & SON

Funeral Directors



A Family Owned Funeral Service

Tel: (01491) 573370

ANDERSON HOUSE
38 READING ROAD
HENLEY-ON-THAMES
RG9 1AG

Golden Charter
Funeral Plans



TOMALIN & SON

Pre-Paid Funeral Plans



For more information, contact

Tel: (01491) 573370

£40 John Lewis Voucher
or

£40 Donation to Sue Ryder Care
with each plan taken out on production of this advert

Golden Charter
Funeral Plans



JJC Electrical Services Limited

Sonning Common Electrician

Jerry Cole

Telephone: 07834 346 487

E-mail: jjcelectservltd@tiscali.co.uk

Website: www.jjcelectservltd.co.uk

- Fault diagnosis, repair and re-wires
- New installation work
- Fuse board changes
- Lighting advice and installation



Pranic Healing

A simple, powerful & effective system of non-touch energy healing developed by Master Choa Kok Sui. It is based on the principle that the body is capable of healing itself from many different physical & emotional imbalances.

Anyone can benefit from Pranic Healing – even your pets!

Sarah Jenner

07736 298206

www.ukpranic-healing.co.uk

sjpranichealing@gmail.com



PET COUNTRY SUPPLIES

We stock all types of

- ✓ Animal Feed
- ✓ Frozen Meat
- ✓ Farm Feeds

We Stock Products for

- ✓ Animal Well Being
- ✓ Wild Birds
- ✓ Ponds
- ✓ Farm Animals
- ✓ Domestic Animals
- ✓ Wild life
- ✓ Toys and Beds

We have been trading in the village for over 40 years
We have old fashioned friendly Service
We can't stock everything but we can get most things
for your pet! We deliver free on orders over £25.00
COME AND SEE US !!

43a Wood Lane

Sonning Common RG4 9SJ

0118 9723495

Email interestedin@petcountrysupplies.co.uk
www.petcountrysupplies.co.uk

Open.....Mon to Sat 9.am to 5.30pm (5pm Sat)

9am to 4pm Weds

Closed all day Sunday and Bank Hols

**You may be surprised
we now stock**



Also We Sell
MEMBERSHIP for
**SHIPLAKE & BINFIELD
ANGLING CLUB**

HELLO EVERYONE,

I hope you are happy that summer is coming. I know I am because I will be able to get out onto my skateboard more with my brother. Are you looking forward to anything? If you are, please let me know at junior_editor@sonningcommonmagazine.org

ZACK



ANIMAL

WORDSEARCH

D	H	P	T	U	Y	S	P	N	G
I	G	A	N	W	U	I	S	I	I
U	C	H	T	P	G	Q	T	H	R
Q	R	O	O	E	U	B	K	P	A
S	D	T	O	I	E	E	N	L	F
M	C	N	R	X	H	H	E	O	F
O	A	R	B	O	C	L	C	D	E
W	E	S	U	P	Y	T	A	L	P
L	J	G	N	D	O	G	Z	I	D
H	A	M	S	T	E	R	G	S	U

CAT
CHEETAH
COBRA
DOG
DOLPHIN
GIRAFFE
HAMSTER
OCTOPUS
OWL
PIG
PIGEON
PLATYPUS
SQUID
SQUIRREL



MY TIP

My minecraft tip this time is going to be a seed. The seed is

-1916955510465693861

It has savannah plateau, diamonds spawn and a desert temple.

BOOK REVIEW

Finding the Fox: The Shapeshifter

By Ali Sparkes

The author Ali Sparkes came to my school to talk about her books, and my friend Izzy bought me one called 'Out of this world.' It was so good that I asked my mum if I could download some more of her books onto my kindle.

My favourite is The Shapeshifter, the first in a series of books. It's all about a boy called Dax who can shapeshift into a fox! He does not like where he lives so when a man offers him a place at a school for children with special powers, called Cola Club, he jumps at it. At Cola club, with other children of limitless ability, Dax feels at home. But then a journalist tracks him down and he begins to wonder who is running the school and why.

I haven't finished this book yet, but it is really, really good. I can't wait to read all of the series. ●



HENLEY MAY FAIR

On bank holiday Monday I went down to the May Fair at Mill Meadows with my family. It was very busy and there were lots of fun things to do.

My brother, sister and I all bet on different ferrets in a race. It was rather funny the way the ferret raced - I can't write exactly what happened here! - but in the end, the ferret that I bet on won. As my prize, I was given a blue key ring with a ferret on it, and the runners up all got a pencil.



My sister entered three different cakes into the kids baking competition, which was judged by the Mayor of Henley. We were very excited that she won one first prize and two second prizes. Well done, Anouska! ●

WEE-COT SEATING

*Upholstery, Loose Covers,
Replacement Cushions, Chair
Caning, French Polishing
& Furniture Repairs*

LIZANNE SMITH
TEL: 0118 972 4560

wood lane dentistry



Vik Chugani BDS M FDS RCSEd M Sc
Richard McQuillan BDS

- Your local family friendly practice
- Routine general dentistry
- Affordable dental plans with Denplan
- Children seen on the NHS
- Tooth whitening
- Cosmetic dentistry and Implants
- Ample free parking

Now taking on new patients

Saturday and evening appointments available

HAPPY HEALTHY SMILES ...



Denplan
the standard of dentistry

Wood Lane Sonning Common Reading Berkshire RG4 9SJ
www.woodlanedentistry.co.uk Telephone 0118 9722626

SPRUCE MAINTENANCE SERVICE

For all your property maintenance requirements:

- ♦Decorating - inside and out
- ♦Paper Hanging
- ♦Carpentry - including door easing & hanging
- ♦Wall & Floor Tiling & Silicone Renewal
- ♦Plumbing - leaking taps etc.
- ♦Patio's, Landscaping & Garden Design
- ♦Hedge Cutting & Planting

Pass on your TO DO list

ROB SMITH Tel: 0118 972 4560



Set in an idyllic village location, our small, friendly pre-school creates a very special environment for children guided by a team of highly qualified, caring staff. Please contact us for details.
registrar@keps.co.uk

With excellent links to
Kidmore End Primary School
and only 5 minutes from
Caversham, Sonning Common,
Peppard and Emmer Green.



Kidmore End Pre-School, Parish Room
Wood Lane, Kidmore End, Reading RG4 9BB
Registered Charity Number 104 6030
www.KidmoreEndPreSchool.co.uk



A.B. WALKER
& SON LIMITED

FUNERAL DIRECTORS EST. 1826



SELECTED
Independent
FUNERAL HOMES®

Arranging a funeral can be stressful and demanding. Five generations serving Sonning Common; we believe we will make a difference.

For 24 hour assistance:

Henley-on-Thames 01491 413434

Caversham 0118 947 7007

Reading 0118 957 3650

Also at Thatcham, Bracknell and Wokingham

For flowers, donations and further information:

www.abwalker.co.uk



YOGA:

IT'S NEVER TOO LATE TO REAP THE BENEFITS

By CHRISTINE ATKINSON

Yoga is available to anyone of any age, or ability, to take up at any stage in life. Benefits are vast - keeping mobile, stress and tension free and younger and freer in body, mind and soul.

Particularly in this day and age when so many of us sit at desks in front of a computer, or daily drive/ travel to work for hours - activities which our bodies weren't designed to do - can often lead to debilitating back ache and pain creating more stress and tension related problems such as sciatica and migraine.

You can start at any age - so it's never too late ...

What is yoga?

Yoga is an ancient form of exercise that focuses on strength, flexibility and breathing to boost physical and mental wellbeing. The main components of yoga are postures (a series of movements designed to increase strength and flexibility) and breathing. The practice originated in India about 5,000 years ago, and yoga classes can now be found in health clubs, schools, hospitals and surgeries - and local village halls. Many sportsmen and women use yoga as an additional part of their training. This can help prevent, and aid recovery from, injuries as well as increasing bone density, to help prevent osteoporosis and

increase blood circulation throughout the body.

What are the health benefits of yoga?

There have been lots of scientific trials published on yoga. Most of these studies suggest that yoga is a safe and effective way to increase physical activity, especially strength, flexibility, balance and co-ordination. There's some evidence that regular yoga practice is beneficial for people with high blood pressure, heart disease, aches and pains - including lower back pain - depression and stress. Many women use yoga during pregnancy and also use the breathing techniques during labour.

Can yoga help with health issues like arthritis?

Yoga is popular with people with arthritis, rheumatism and back pain for its gentle way of promoting flexibility and strength. However, some yoga moves may not be suitable for people with different problems but movements can be adapted to suit individual needs.

Am I too old for yoga?

Definitely not. People often start yoga in their 70s and many say they wish they had started sooner. There are yoga classes for every age group. Yoga is a form of exercise that can be enjoyed from childhood to your advanced years and can keep you younger not only in body, but mind and outlook too.

Do I have to be fit to do yoga?

No, yoga is a non-competitive and low impact practice. You should only work to your own limits. In a mixed ability yoga class, you need to be able to get up and down from the floor. The use of a chair to support you in balance postures is always possible and special yoga blocks and belts can be used to aid and adapt postures.

Don't I need to be flexible to do yoga?

Not necessarily. Yoga will improve your flexibility and help you go beyond your normal range of movement over a period of time.

Can I injure myself doing yoga?

Yoga is the same as any other exercise discipline. It is perfectly safe if taught properly by experienced teachers who have checked your health history before starting. Learning from a qualified yoga teacher and choosing a class appropriate to your level will ensure that you remain injury-free.

What style of yoga should I do?

There are many different styles of yoga, such as Ashtanga, Iyengar and Sivananda. Most everyday yoga classes use Hatha yoga, the classic style, and the safest for all levels of ability. This style focuses mainly on physical and mental strength through breathing and postures. Some styles are more vigorous than others. The key is to choose a class appropriate to your fitness level.

What type of class should I look out for?

Classes can vary in duration, but most are around an hour and a half. A complete class consists of breath work, warm ups, postures and ends with relaxation. A good class will allow you time to learn the different breathing techniques (pranayamas) and have a de-stressing deep relaxation at the end of the class. It's worth speaking to a teacher about their approach before you sign up for a class.

Where can I find a yoga class?

There are lots of yoga classes held locally - try the library, local health centre, local papers for more information. ●



"We turn feelings into flowers"



42 Wood Lane • Sonning Common • RG4 9SL
0118 972 1240 0777 179 0916

www.brambles-sonning-common.co.uk

TradeMark

WINDOWS - DOORS - CONSERVATORIES
FASCIA - SOFFITS - GUTTERING - CLADDING
WINDOW REPAIRS - MISTY GLASS

**Use your Local Installer with 30
years experience**

For a FREE quotation

Call Mike Dockree on

0118 972 4376 or 07785928190



**All window, door & conservatory
installations carry a 10 year guarantee
and the finished product is
independently inspected with
all certificates**

Fed up with limescale?

***A Water Softener
would be your solution***

Compass Water Softeners

SALT, SALES, SERVICE, INSTALLATION

0118 972 3773 0118 941 0869 0796 700 9838

www.compasswatersofteners.co.uk

Email: martin@compasswatersofteners.co.uk

HELPLINE LANDSCAPE SERVICES

Landscaping - Design, Construction, Garden make over
Groundwork - Clearance, Footings, Drainage, Grading
Timber work - Gateways, Decking, Arches, Pergola, Gazabo
Fencing - Panel, Close Board, Wire mesh, Stock fence
Gardening - Mowing, Weeding, Pruning, Clearance
Tree work - Felling, Lopping, Pruning, Clearance
Driveways - Gravel, Paved, Brick, Concrete
Ponds - Water features, Ponds, Pools
Patios - Slab, Stone, Pavers, Brick
Log's for sale - Cut and split to size

Based in Sonning Common

Tel / Fax: 0118 9721342

Email: chriscolbeck@btinternet.com

Autumn Leaf

Thinking of moving?



**For a free valuation of your property please
contact Richard Beville or Adrian Davies**

Beville
ESTATE AGENCY

28 Peppard Road, Sonning Common, S.Oxon, RG4 9SU
info@beville.co.uk | www.beville.co.uk | 0118 924 2526



Join the club

By **CHRISTINE ATKINSON**



THE SUMMER SPORTS SEASON IS HERE

The summer sports season has arrived, so we thought it would be good to keep you all up to date with some of the local, and affordable, sporting facilities for all ages.

Kidmore End Cricket Club (KECC) was founded in 1863 and celebrated its 150th anniversary last year. Based in The Hamlet at Gallowstree Common (Kidmore End parish) they have a great new clubhouse in beautiful surroundings. The club has both senior and junior teams and currently over 200 members play in local leagues. The junior section is very popular with seven teams ranging in age from 6 to 15.

It is run very much as a family affair with parents helping out at junior games - providing the all important teas and refreshments, as well as the umpiring and scoring! KECC is run by a committee, which, like most other sports clubs, is voluntary and always in need of offers of help to run fundraising events and coaching.

For more information, and how to join, please see their website www.pitchero.com/clubs/kidmoreendcricketclub ●

Sonning Common and District Tennis Club has two courts within the area known as Bishopswood Sports Ground on Horsepath Road. The club looks after the courts itself and provides affordable, informal and accessible tennis to the community. There is no clubhouse, nor leagues - just join up and get down there with a partner and your rackets!

Again the club is run by volunteers, including the very busy Judy Pitson as Treasurer. The courts are locked after use and the code to the lock is made available to club members. New members are very welcome.

Fees to join the club are very reasonable at £30 for a family membership, so ensuring that almost anyone can afford to enjoy the sport...

Send your cheque and members details to Judy at 9 Carling Road RG4 9TG or call on 0118 972 3294 for more information ●



We are surrounded by excellent Golf Courses which are great for some, but maybe not for those who are either unable to afford the club fees, or are beginning their golfing career and would like to learn by playing. Greys Green Golf course is situated in Peppard Common and has three courses which should suit the complete beginner or experienced golfer.

The course is a 'Pay and Play' one which means that you can just turn up, pay and play! The small clubhouse has clubs and trolleys to hire, drinks and balls available to buy and can provide coaching should

it be required. There are also lovely walks around the course for those who don't want to play!

The fees start from only £2 for a junior on the 9 - hole course, or £6 for an adult. More information is available on their website www.greysgreengolf.co.uk or phone on 01491 629967 ●



If you are not so keen on the more energetic summer sports then why not try the gentler sport of lawn bowls at Peppard Bowls Club. It is based next to Peppard War Memorial Hall and meet regularly on Monday and Thursday afternoons. The club has regular social events which are open to new members. After your game you can enjoy a beer, or cuppa, at their bar in the clubhouse.

More information available by calling Jenny on 0118 924 2617 ●



Free events and walks

THIS YEAR TO EXPLORE THE CHILTERNs!



The Chiltern Society is launching a fantastic new range of themed events and these events are open to everyone

- Farm walks
- Glow worm walks
- One day map reading courses
- Night walks to see shooting stars
- Launch of the north Chiltern Way loop path and walking festival
- Wild flower and wildlife walks
- Nordic walking

Full list of dates and activities <http://www.chilternsociety.org.uk/activ-events.php>

HEALTH WALKS

Sonning Common health walks started after Easter. Health walking is for fitness – and it's friendly, fun and free! Timetables are available from the Health Centre, the library and the Herb Farm, or at

www.sonningcommonhealthwalks.co.uk

Come and join us!

THANKS TO A PERSISTENT RESIDENT THE FOOTPATH IS NOW CLEAR

LETTER

For several months now, I have been badgering the local and county council to improve the footpath which leads from the Herb Farm to the Millennium Green. The path was very narrow, the bushes were overgrown near Bird Wood Court and the path was always covered in mud, and made for dangerous walking.

About a couple of months ago, I was walking along there and there were two men clearing the path of the debris from the wind and rain we had, and they were widening it. Also the bushes and overgrown hanging branches had been cleared. Fantastic I thought. Then the next time I went along there I noticed that the work had stopped along by the bin!!!!!!

I got in touch with the council again, and a couple of weeks later the men were working and have now cleared the whole path along to the Herb Farm. It is now wide enough for people with pushchairs and wheelchair users to make their way along there, and makes for a much more enjoyable walk.

Now it is more accessible and the summer is coming it would be great to see more people using the Millennium Green. There is a lovely area where you can enjoy a picnic, children can play games or just run about, and it's all free!! ●

Linda Webb

Library news

TRAINING FOR LIBRARY VOLUNTEERS GETS UNDERWAY

By ROS VARNES

If all goes according to plan, volunteers will be working alongside professional staff in the library from August onwards. Following a meeting to recruit volunteers in March, around 65 residents registered their interest in volunteering at the library.

Oxfordshire County Council (OCC) was delighted with the response from residents. The meeting, organised by the Friends of Sonning Common Library, achieved the biggest turnout from would-be volunteers to date.

OCC estimates that 30-40 volunteers will be required to help professional staff run Sonning Common Library when some funding is withdrawn from April of next year. The first group of volunteers started their training at the end of May.

A new steering group has been formed to replace the Friends of Sonning Common Library, who campaigned successfully to safeguard the library's future, and who have now disbanded. ●

Our library manager Rosemary Dunstan said "We were gratified with the response to our call for volunteers to help staff run the library, following the reduction in funding by OCC. The training will have finished by mid-August so that volunteers can be in place before the start of the new school year.



BOOKREVIEW By PHILLIPPA TAPHOUSE

A slightly different book review this month, as I thought I would review all four books of the Clifton Chronicles together.

Jeffrey Archer is like Marmite...You either love him or hate him. It's the former for me. He always, always spins such an incredible yarn, which has you turning page after page and then leaves you on a cliffhanger searching desperately for the publication date of the next instalment!

The story begins in 1919 when Harry Clifton is born in a back street in Bristol. His life is destined to follow that of his father and his uncle to work in the docks, but life takes an unexpected turn and due to his mother's hard work and ambition for him, he finds himself at Oxford University where he befriends Giles Barrington. Giles and Harry will be friends for the rest of their lives and the next three books follow them both through many, many twists and turns, each one ending in a way you don't expect and you move seamlessly onto the next book.

If you want to keep busy for the next couple of months, this saga is the one for you...but be warned, the fifth book hasn't been published yet so you may feel a tad frustrated! ●



SUMMER READING CHALLENGE 2014

Are you ready for the latest Summer Reading Challenge, which begins on Saturday 12 July?

This year is 'Mythical Maze' - so you can expect lots of mythical mystery storybooks in the library. Sign up from Saturday 12 July to receive your mythical poster, then read 6 books and visit 3 times over the summer (that's once to sign up and 3 books per visit). You will receive stickers, bookmarks and wrist bands, a medal and certificate to celebrate your achievement.

Special storytimes every Saturday in August at 10am makes this a particularly mythical summer; plus mythical crafts to decorate the library or your home.

A challenge for teenagers and adults this year details in the library. ●

SPECIAL STORYTIME: FATHERS' DAY 15 JUNE

Saturday 14 June there will be a Fathers' Day Special Storytime at 10am. After the stories there will be an opportunity to make something for the fathers in your family. Home-made cakes on sale too! ●

ALL MAKES SERVICING

Caring for all your motoring needs for over 50 years!



MOT
WHILE YOU WAIT...



- ✓ BOSCH Diagnostics
- ✓ Service & Repair
- ✓ Air Conditioning Service & Re-Gas
- ✓ ATA Highly Qualified Technicians
- ✓ Free Collection & Delivery
- ✓ Courtesy Cars Available

Sonning Common Vauxhall

0118 972 2021

Peppard Road, Sonning Common, Reading RG4 9SU

CUSTOMER EXCELLENCE WINNER

Service Open: Mon-Fri 8am - 6pm • Sat 8.30am - 12.30pm • Sun CLOSED

www.sonningcommonvauxhall.com



£10.00 OFF

your next MoT on production of this voucher



Happy Hounds Dog Grooming Parlour

Caring & Professional Groomer
Clipping, Bathing, Handstripping,
Nails & much more

Mobile and pick-up service available

Call Karen on 07799 114061

TEXTUREPLUS

Free Estimates

Interior & Exterior Decorating
Artexing & Coving / Solving Artex Problems
Floor & Wall Tiling / Wallpaper Hanging / Plastering
Kitchens / Bathrooms / Roof & Guttering Maintenance
Carpentry – Doors + Architraves + Skirting

COMPLETE HOME IMPROVEMENTS
(Quality Comes As Standard)

30 Years Experience / NHBC Awarded / PPL Insured

Insurance Work Undertaken

Tel: 0118 972 1442 or Mobile: 07880 542363

Based in Sonning Common

Sonning Common Pet Care

At Home Pet Care

when you are on holiday or at work

Cats

Daily visits to clean, feed and pamper

Small Pets

Home visits to care for your Rabbits,
Guinea Pigs, Hamsters, etc

Dog Walking

Regular or occasional walks

Puppy Visits

To feed, play, toilet break and clean up

Please call Alison for further information

Tel 0118 9722948 / 07787 114536



PICTURE FRAMING

SMALL LOCAL WORKSHOP

Work carried out for local gallery

Complete framing service

Canvases stretched

Mounts cut for existing frames

Old photographs restored

Local collection/delivery

Contact Colin Ward 0118 972 2075

Tai Chi and Qigong Classes



Would you like to feel more relaxed, healthier in mind, body and spirit?
Do you need to improve your balance, coordination or strength?
Want to improve your overall sense of wellbeing?

Ideal for all ages and any fitness level

Monday Evenings 19:00 - 20:30 starts 2nd June in Chiltern Edge School

Call Karen on 07867 954 786 or see www.karenpounds.co.uk

Tuesdays Mornings (term-time only) 09:30 – 10:30 in Kidmore End War Memorial Hall

Call Debbie on 07802 347 943 or see www.debbiepage.org



Caring for the carers

The very nature of caring - of being there for a loved one facing ill health or disability - means too often people don't at first, or sometimes ever, identify themselves as carers and, therefore, miss out on support.

As National Carers Week fast approaches, 9 to 15 June, I would like to take this opportunity to thank the very many of you who have offered to support us by holding an event or activity. The number of partner organisations in Oxfordshire now working together for Carers Week has reached an unprecedented number - too many to mention individual names

but it is obvious that there is a strong commitment amongst you to support carers, which is fantastic and for which we are so grateful to you all for. We are really excited about the plans already in place for the week and are definitely looking at delivering the biggest 'Carers Week' ever seen in Oxfordshire, when we hope that many hundreds of carers will recognise their caring role and seek the free information, help and support that is available to them wherever they live in the county.

There is still time to join us in Oxfordshire's Carers Quest and if you would like to plan or organise an event, however big or small, then please do get

in touch and let us know. We can supply resource materials for you, including leaflets, newsletters, cotton shopping bags, pens and much more by calling 01235 424715. Our Carers Week events calendar will be published shortly and our website www.carersoxfordshire.org.uk events page will be updated regularly throughout May and June, so do please come and support us if you can. ●

For more information about support including grants and breaks for carers do visit our website www.carersoxfordshire.org.uk or telephone 0845 050 7666.

VILLAGE COFFEE MORNINGS!

Have you heard about the Sonning Common Village Coffee Mornings? Monthly coffee mornings have been held in the Village Hall since March 2013, with the aim of providing local residents with a daytime venue where they can socialise over a cup of tea or coffee, or just spend time browsing our book and bric-a-brac stalls for a bargain!

The event is run by Sonning Common Women's Institute and open to anyone who wishes to drop by - a warm and friendly welcome awaits you. There is no charge for admission or refreshments, although a small donation is appreciated. Funds raised on the day help support the many varied clubs and activities which abound in our delightful village. From the profits raised each month, a local community project receives a donation. In 2013 we raised a total of £500 and beneficiaries to date have included

the Village Gardeners, Community Responders, Club SC, Thames Valley & Chiltern Air Ambulance, FISH, Sonning Common Lunch Club, Wyfold Riding for the Disabled, Sue Ryder, Sonning Common Primary School Centenary Fund and 2nd Kidmore End Brownies.

We are always in need of saleable, good quality bric-a-brac and books. Donations gratefully received. Please bring items to the Coffee Mornings or contact Gill Hayward (0118 9723860), Sue Hedges (0118 9723678) or Alison Bishop (0118 9724824) and we will arrange to collect.

We are delighted to see many regular faces and always pleased to greet new visitors. The Coffee Morning dates appear on the Diary and Noticeboard pages of this magazine and village noticeboards. If you are passing by, please do feel free to come in and stay awhile. ●



PODIATRY/CHIROPODY CLINIC

Sonning Common
For enquiries & appointments call

Heidi Snookes-Owen

B.Sc., D.Pod.M., M.Ch.S.
HCPC REGISTERED

0118 972 4742

PILATES ABC, HENLEY.

**CLASSES: SONNING COMMON, HENLEY
& HURLEY. BEGINNERS WELCOME**

07521 699265 alyth@pilatesabc.co.uk

www.pilatesabc.co.uk



Whatever your electrical needs are, HHP Electrical can help...

With electrical services ranging from:

- Lighting / Power upgrades
 - Full / Part Rewires
 - Fault finding and repairs
 - Full Electrical Safety/ Landlords Inspections
- All to suit the exact requirements of our clients.

0118 9724108 - www.hhpelectrical.co.uk

info@hhpelectrical.co.uk

SPICK 'n' SPAN DOMESTIC CLEANING SERVICE

- Reliable, friendly & trustworthy.
- Weekly / Fortnightly cleans
- One-Off Cleans
- All equipment and supplies provided.

Competitive Rates

Please call Louise for a free quotation.

Tel: 07914 295 167 / 0118 941 8172

Graham Blake soft furnishing

- Loose Covers
- Curtains
- Re-upholstery
- Carpets
- Conservatory Blinds
- Quilted Bedspreads
- Tracks & Poles
- Plantation Shutters

TEN YEAR GUARANTEE

For personal, helpful service, please telephone

01844 261 769

07802 213 381

www.grahamblake.com

Established Family Business

What's your property worth?

We have buyers and tenants eagerly seeking property
to **buy** or **rent**, so invite us around for your
FREE market appraisal.

Contact us at **Davis Tate** today
on **0118 972 4242** or email **sonning@davistate.com**

If you have instructed another agent on a sole agency and/or sole selling rights basis, the terms of those instructions must be considered to avoid a possible liability to pay two commissions. However asking us to visit is FREE.



Julie Norman MANAGER



Jo Bailey SALES AND LETTINGS NEGOTIATOR

 **davis tate**

ALL PROPERTY MATTERS

TOM FORT

Veins ...



I don't want to cause alarm but I must reveal that I am writing this contribution for the magazine wearing a pair of tight black stockings that extend up to and over my thighs. Don't worry! I am not making a fashion statement or embarking upon the first hesitant step towards cross-dressing. The reason for the stockings is purely medical.

I had a "procedure" on Friday morning to deal with my varicose veins. The problem with varicose veins – apart from the discomfort – is that no one, apart from the sufferer, is interested in them. They are like piles and ingrowing toenails, unpleasant and sometimes painful, but not really to be talked about.

I have never had what you might call

an interesting or charismatic operation. A friend of mine had a liver transplant some years ago, and at the slightest invitation will lift his shirt to display the shark's bite of scars along his side to gasps of amazement and admiration. The fact that the transplant was the consequence of an extremely misspent youth is neither here nor there.

Anything requiring plaster is interesting, if only because of the opportunity to write absurd things on it. Hip and knee replacements are of enormous fascination to anyone with dodgy knees or hips, which seems to be most of us. Anything involving keyhole surgery always commands an audience.

But contemplating the thought of someone else's varicose veins is plain

depressing – almost as depressing as contemplating your own. So I shall refrain from describing the wonders of the laser procedure to get rid of mine. I shall not dwell on the gruesome aspect of it (blood, yes, and lots of it). Nor shall I boast of how amazingly brave I was, never flinching and certainly not weeping.

As for the stockings, I have to wear them for three days and nights without taking them off, and then for another ten days. After that I promise that I will never willingly pull on a pair of stockings ever again. ●

OLD COPSE WOODS

My name is Edward Creaney. 18 years old, an aspiring photographer and free runner. I have spent a lot of my time exploring the woods and other areas around Sonning Common as I have family living here. I've always been interested in the buildings in Old Copse (Bishopswood) and after being told the area around them had been cleared I decided it was the perfect time to have a look around and get some pictures.

The buildings are what are known as Stanton air raid shelters. The Stanton shelter was manufactured by the Stanton Ironworks near Nottingham during the 2nd World War and could be made for any shape or size, some could even hold up to 50 people at once. From the size of the one in Sonning Common my guess would be that this belonged to one family as a few feet away remains the supports and chimney to a house and with a little digging around here you can easily find parts of plates and other items. It is quite amazing to think that over 60 years ago the buildings that remain today were used for survival in a World War. I recommend you take a walk up to Old Copse and have a look around yourself to get a real feel of the area and the size of the shelters. ●

Edward Creaney,

<http://www.facebook.com/ECreaneyPhotography>



Parish news

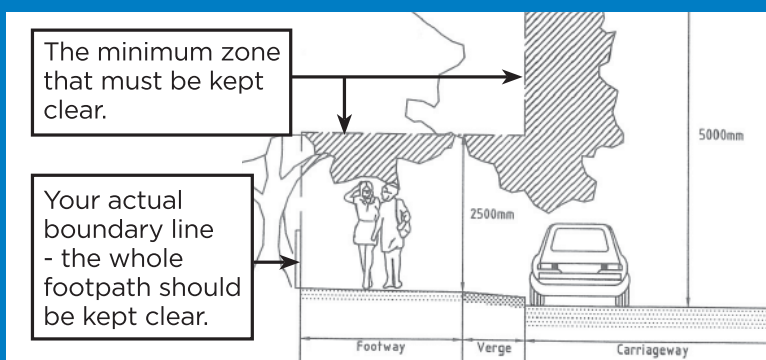
GOOD FENCES MAKE GOOD NEIGHBOURS - SO DO WELL KEPT HEDGES!

A recurring problem in the village is that some hedges and trees are allowed to grow across pavements beyond people's actual boundary lines. This causes real problems for pedestrians, for people pushing prams and for users of wheelchairs or mobility scooters.

As well as being a nuisance, this is illegal under Section 154 of the Highways Act 1980 and the county council's Highways authority can actually come and cut your hedge or trees back to the boundary and charge the cost to you. The legal situation is as shown to the right.

The Parish Council tries to help by writing to householders when we see hedges that are causing problems or when we receive complaints. This is to help them to avoid the cost of the work being done by Highways.

We would rather not have to do this so please be neighbourly and keep your hedges and trees inside your boundaries. ●



COUNCILLOR PROFILE: JANE DIWELL GREAT PLANS FOR THE VILLAGE

I come from SE London originally but moved to the area in 1975 when my then husband Alan Diwell's job with Johnson Matthey moved to the Research Centre at Blounts Court.

I realised I knew hardly anybody in the village nor did I know what was going on there, much less have any influence over it, always having worked in London, Oxford or Reading. I was determined to change all that, so I joined the Parish Council.

I am keen to contribute in any way I can and am concerned to preserve the character and improve the amenities of the village. I currently have responsibility for Widmore Pond as chair of the Pond Committee. I am proud of our achievements there, as we have (through the generosity of a village resident) purchased two fine new benches.

Now we have a website as well, and further ideas are under development. Perhaps in due course we may even have a webcam on the ducks!

I think our Parish Council has great plans for the village and it is very exciting to be part of such a dynamic group of people. ●



BOUNDARY REVIEW POSTCARDS

Around 1,500 village homes were leafleted by the parish council last month.

Residents were asked to send postcards to South Oxfordshire District Council (SODC) regarding the current parish boundary review.

The parish council wants the boundary to be redrawn to include those parts of Rotherfield Peppard that are within the continuous built up area of Sonning Common. ●

PUTTING TIME TO GOOD USE

A team of offenders helped to 'pay back' for their crimes by working with the parish council on a major tidy-up of the village last month.

Eight people, who had received Community Order sentences, provided a day's unpaid work and saved the parish council and local tax-payers thousands of pounds.

They cleared and tidied vegetation around the Scout Hut and play area in Baskerville Road under the supervision of the staff from the Thames Valley Probation and the parish council. ●

Church *news*



Sunday 16 March, at St John's, saw the licensing of the Revd Susan Cooper, as Associate Priest in the Benefice, by the Rt Revd Colin Fletcher, Bishop of Dorchester. Susan had recently arrived, with her husband, Ron, from New Zealand; her interview, for the post, had been conducted by Skype - a first for both the Bishop and the panel. Another first for the Bishop was his licensing of a priest in the very recently created Archdeaconry of Dorchester. (Previously, we were in the Archdeaconry of Oxford.)

Father Graham, our Rector, together with our Licensed Readers, Morris Clegg and Stewart Morgan, have been delighted to welcome Susan to the ministry team, which serves the two Parishes (Kidmore End & Sonning Common and Rotherfield Peppard) in the Benefice.

Susan made one of her first public appearances at the Good Friday Procession of Witness, in Sonning Common, the ecumenical occasion being blessed with lovely spring sunshine. She also took services at Christ the King and St John's so has been "thrown in at the deep end".

We were saddened by the death of Betty Brindley, a well-known figure in Sonning Common, at the beginning of February. She and Ron arrived in Kidmore End in 1960 and became stalwart members of the church, which they served, tirelessly, in so many ways - as Ron continues to do. In concluding her tribute to Betty, at a service in St John's, Mrs Moira Laurie said -

"Some people make such a difference to our lives, by being simply who they are. They make the world a better place and, when they are gone we realise how lucky we were to know them. We should not mourn that Betty died, but praise God that she lived." ●

For your diaries:

LITTLE LAMBS

Wednesday 30 April
9.30am at St John's

Contact Felicity Cooper 0118 947 7862
or felicityandmichael@btinternet.com

THIRD THURSDAY DROP-IN

Thursday 15 May
2 - 3.30pm at Christ the King

All are welcome; if you know anybody (not just churchgoers) who might like the company, a chat and a cup of tea, please let them know.

Anyone needing a lift please contact Jenny MacGregor on 0118 947 2855, Frances Brewitt-Taylor on 0118 948 2843 or Val Heywood. Volunteers to give lifts would also be appreciated.

For further news/information about our churches, readers are invited to look at our website.

www.lambandflag.org

FROM THE EDITOR ...

In the April May issue of the magazine I, incorrectly, used the title "Welcome to the new vicar at All Saints". My sincere apologies especially to the Rector, Graham Foulis Brown. So to clarify, the Revd Susan Cooper has been Licensed as associate priest to the parishes of Rotherfield Peppard, Kidmore End & Sonning Common and will work across the parishes and in all three churches" ●

June 2014

MONDAY 2	Peppard Bowls - Club afternoon - Peppard War Memorial Hall	1.45pm - 4pm
WEDNESDAY 4	Village Coffee Morning hosted by Sonning Common Women's Institute. Open to all. Raising funds for Sonning Common lunch club - Village Hall	10.30am - 12noon
THURSDAY 5	Peppard Bowls - Club afternoon - Peppard War Memorial Hall	1.45pm - 4pm
THURSDAY 5	Antique & Collectable Fair - Caversham Heath Golf Club	8.30am - 4pm
FRIDAY 6	Notts group - Village Hall	9.30am - 12.30pm
MONDAY 9	Royal British Legions Women's Section - Bring & Buy - Batten House	2pm - 3.30pm
MONDAY 9	Peppard Bowls - Club afternoon - Peppard War Memorial Hall	1.45pm - 4pm
THURSDAY 12	Peppard Bowls - Club afternoon - Peppard War Memorial Hall	1.45pm - 4pm
FRIDAY 13	Nottakwire practice - Village Hall	9.45am - 11.30am
SUNDAY 15	Felt-makers get together. Bring lunch and a project to work on - Village Hall	10am - 4pm
MONDAY 16	Peppard Bowls - Club afternoon - Peppard War Memorial Hall	1.45pm - 4pm
MONDAY 16	Sonning Common Parish Council - Village Hall	8pm
THURSDAY 19	FISH - Pub lunch	11.30am
THURSDAY 19	Peppard Bowls - Club afternoon - Peppard War Memorial Hall	1.45pm - 4pm
THURSDAY 19	Sonning Common Women's Institute monthly meeting. Visitors welcome - Village Hall	7.30pm
FRIDAY 20	Nottakwire practice - Village Hall	9.45am - 11.30am
MONDAY 23	Peppard Bowls - Club afternoon - Peppard War Memorial Hall	1.45pm - 4pm
THURSDAY 26	FISH - Henley Farmers' Market	
THURSDAY 26	Peppard Bowls - Club afternoon - Peppard War Memorial Hall	1.45pm - 4pm
FRIDAY 27	Nottakwire dress rehearsal - Village Hall	9.30am
FRIDAY 27	Nottakwire concert - Village Hall	6pm (doors open at 5.30pm)
SATURDAY 28	Wyfold Riding for the Disabled - Fun Day - Lime Avenue (off Stoke Row Road)	11am - 2.30pm
SATURDAY 28	Nottakwire concert - Village Hall	2pm (doors open at 1.30pm)
SUNDAY 29	Sonning Common Pre-school - Summer Fair - Sonning Common Pre-school garden	11.30am - 2pm
MONDAY 30	Peppard Bowls - Club afternoon - Peppard War Memorial Hall	1.45pm - 4pm

July 2014

THURSDAY 3	Peppard Bowls - Club afternoon - Peppard War Memorial Hall	1.45pm - 4pm
THURSDAY 3	Antique & Collectable Fair - Caversham Heath Golf Club	8.30am - 4pm
FRIDAY 4	Nottakwire practice - Village Hall	9.45am - 11.30am
MONDAY 7	Peppard Bowls - Club afternoon - Peppard War Memorial Hall	1.45pm - 4pm
THURSDAY 10	Peppard Bowls - Club afternoon - Peppard War Memorial Hall	1.45pm - 4pm
FRIDAY 11	Notts group - Village Hall	9.30am - 12.30pm
SUNDAY 13	Felt-makers get together. Bring lunch and a project to work on - Village Hall	10am - 4pm
MONDAY 14	Village Coffee Morning hosted by Sonning Common Women's Institute. Open to all. Raising funds for Club SC - Village Hall	10.30am - 12noon
MONDAY 14	Peppard Bowls - Club afternoon - Peppard War Memorial Hall	1.45pm - 4pm
MONDAY 14	Royal British Legions Women's Section - Quiz - Batten House	2pm - 3.30pm
THURSDAY 17	FISH - Pub lunch	11.30am
THURSDAY 17	Peppard Bowls - Club afternoon - Peppard War Memorial Hall	1.45pm - 4pm
THURSDAY 17	Sonning Common Women's Institute monthly meeting. Visitors welcome - Village Hall	7.30pm
FRIDAY 18	Nottakwire practice - Village Hall	9.45am - 11.30am
MONDAY 21	Peppard Bowls - Club afternoon - Peppard War Memorial Hall	1.45pm - 4pm
MONDAY 21	Sonning Common Parish Council - Village Hall	8pm
THURSDAY 24	FISH - Henley Farmers' Market	
THURSDAY 24	Peppard Bowls - Club afternoon - Peppard War Memorial Hall	1.45pm - 4pm
FRIDAY 25	Nottakwire practice and end of term lunch - Village Hall	9.45am
MONDAY 28	Peppard Bowls - Club afternoon - Peppard War Memorial Hall	1.45pm - 4pm
THURSDAY 31	Peppard Bowls - Club afternoon - Peppard War Memorial Hall	1.45pm - 4pm

FISH runs regular shopping trips to Tesco in Henley on Monday mornings and to Henley and Reading town centres. For more information and to book call 0118 972 3986. ●



Talullah
nails

Talullah Nails specialising in Bio Sculpture Gel

A long lasting & chip-proof nail treatment!

Perfect for special occasions...
or just everyday chic!

Christine Ullah - Nail Technician
T: 01491 682982 M: 07791 256853
Northam House, Main Street, Stoke Row, RG9 5QR
chris@talullahnails.co.uk ■ www.facebook.com/TalullahNails

Computer Problems?

Free quote, no fix no fee, no call out charge

Over 200 happy customers in
Sonning Common.



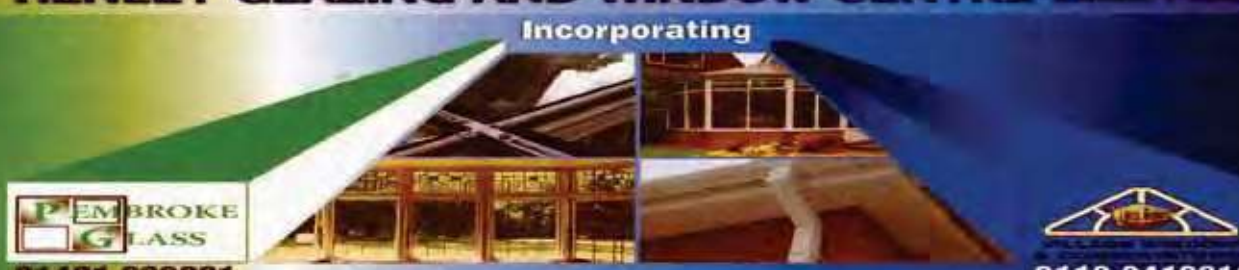
Milo and Michael Harper

Milo Technical Support
22 Sedgewell Road

0118 972 4905

HENLEY GLAZING AND WINDOW CENTRE LIMITED

Incorporating



01491 629901
Glass Supply, Glazing Service,
Mirrors, Shelves, Tabletops,
Sealed Units, Lead Lights,
Locks, Secondary Glazing,
Shower Screens

0118 9419210
Suppliers and Installers of
UPVC, Aluminium and
Timber Windows
Doors and Conservatories
Fascias, Soffits and Guttering

FENSA
Registered Company

Workshop: Unit 12, Manor Farm, Peppard Common, Henley-on-Thames RG9 5LJ
Fax: 01491 629904 Email: henleyglazingwindow@yahoo.co.uk

TANDOORI

Connoisseur

*Come & Experience authentic
Tandoori & Bengali Cuisine*

★ Fully Air-Conditioned
★ Large Groups Catered For
★ Open 7 Days a Week

**21 Wood Lane
Sonning Common
0118 972 3104 / 972 1054**

TAKE-AWAY MENU
We Guarantee Prompt Service on All Orders

S J HINTON

Carpenter & Joiner

Wide range of high-quality carpentry
services delivered by skilled craftsman

Built-In Wardrobes, Cupboards, Shelving.
Kitchen Fitting, Doors, Floors, Windows,
Stairs, Roof Construction.

**Telephone Steve on 0118 972 3602
or 07887 653866**

Sonning Common Beauty

12 Newfield Road Telephone 0118 972 3059
www.sonningcommonbeauty.co.uk

- MANICURE • PEDICURE • ORGANIC FACIALS
- MD FORMULATIONS GLYCOLIC PEELS
- WAXING • LASH AND BROW TREATMENTS
- SPRAY TANNING • MAKE-UP • MASSAGE
- BRIDAL HOLIDAY AND MUM-TO-BE PACKAGES AVAILABLE

Gift Vouchers Available
Some reduced price treatments available each
week please ring to check availability



Sonning Common Health Centre
Wood Lane, Sonning Common,
Reading, RG4 9SW

- Back & Neck pain
- Muscle / Joint Strains
- Ligament Sprain
- Sports Injuries
- Whiplash Injuries
- Shoulder Injuries
- Post-Operative Rehabilitation
- Pre / Post Natal Exercise
- Respiratory Conditions
- Lower Limb & Foot Problems

- Appointments available every day
- Pilates classes throughout the week

Jo Pereira MCSP
Catherine Matthews MCSP
Chartered Physiotherapists

T: 01189 722 745

E: info@functionalphysio.co.uk

www.functionalphysio.co.uk

The team at Functional Physio are Chartered Physiotherapists registered with the Health Professions Council and are recognised by all major insurance companies, including Bupa and Axa PPP.



noble intentions
landscape garden design

Professional
advice, design &
planting for your
garden.

Call Gail Noble
on 0118 972 3214
www.noble-intentions.com



High quality education and child care under the
Early years foundation stage (EYFS) for children
4 months to 5 years

- Good OFSTED report
- Pre-school sessions available
- Open all year, Monday to Friday, 7am to 7pm
- Flexible hours
- Early years education grants available
- Curriculum includes French, Music & Movement and Thames Valley Gym
- Small friendly and personal care in Sonning Common

For further information, please ask for the manager
on 0118 972 4783, or visit our website.

www.alphabetdaynurseries.com

emails: info@alphabetdaynurseries.com



Doggy Dips

Doggy Wellbeing Centre

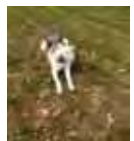
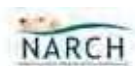
Hydrotherapy and Physiotherapy
Doggy Day Care and Socialisation
On Site Grooming inc. Nail Trimming
Dog Walking Services

Health, Rehabilitation, Fitness and Fun!

0118 972 4849

Unit 1 Kidby's Yard • 28 Kennylands Road • Sonning Common • Reading • RG4 9JT

www.doggydips.co.uk • info@doggydips.co.uk



Fed Up With Call Centres Barrs Insurance

Mark & Helen Richards
Your Local Insurance Brokers
For The Unusual & The Usual
Let Us Take Care Of Your Insurance

- House & Contents • Business • Liabilities
- Travel • Landlords • Professional Indemnity
- Horse • Shops • Sickness / Accident
- Commercial / Unusual Vehicle

If It's Not listed We Still Can Help
All Types Of Insurance Enquiries Welcome

0118 924 2603

mail: info@barrs-insurances.co.uk
www.barrs-insurance.co.uk

Unit 2, Kidby's Yard, Kennylands Road, Sonning Common RG4 9JT

Ridiculously Easy Accounting, Guaranteed!

Specialising in helping Start-Ups and Small Businesses, we offer a full range of accounting and tax services by email and post. Need accounts and tax to satisfy HMRC? Want to outsource all your accounting to free up time? We make your life simpler, with performance guarantees ensuring excellent service or your money back.

Request a free quote online now at
www.blueredaccountants.co.uk

