

april | may 2012

sonningcommon

magazine



PLAN FOR CHANGE IN

our village

Now send your articles direct by email: editor@sonningcommonmagazine.org

G.B. REMOVALS

House, Office & Flat moves etc.

Local Non Local

Part Load to Single item, pianos

Prompt Reliable Service

Large Van with Tail Lift

Contact: Gary – Sonning Common

T: 0118 924 2763 M: 0799 070 7125

HOUSEHOLD CLEARANCES

(REGISTERED WASTE CARRIER)

WATER SOFTENERS

M.P. SOFTENERS

Enjoy the benefits of soft water.

Top quality softeners supplied and
professionally installed.

Sales, Service, Block Salt delivered

TEL: 0118 941 0869

07967 009838 or

0118 972 3773

Chiltern
Beauty

Outstanding Natural Beauty

Waxing

Electrolysis

Eyelash Tinting

Eyebrow Shaping

Jessica Pedicures

Jessica Manicures

Bridal Make-up

Make-up & Lessons

Aromatherapy Facials

0118 972 3157

www.chilternbeauty.co.uk

Janet Copp I.H.B.C

9 Sedgefield Close, Sonning Common



Property Maintenance
Building, Decorating & Cleaning Services

- Office Cleaning •
- Painting & Decorating •
- New Kitchens •
- New Bathrooms •
- Wall & Floor Tiling •
- Plumbing & Heating •
- Alterations & Renovations •
- Carpet Cleaning •

One Stop Property Maintenance
T: 0118 972 1644 • M: 07770 607876
info@ospr.co.uk • www.ospr.co.uk

one stop
PROPERTY MAINTENANCE COMPANY

SONNING COMMON PRE-SCHOOL

GROVE ROAD
SONNING COMMON
0118 972 4760

We are a happy friendly pre-school
welcoming children from 2 years
6 months, to come and learn through
play. We have a purpose built building
& extensive play garden.

Morning sessions are 9.00am - 12.00pm
Afternoon sessions are 12.00pm - 3.00pm



elements;
KITCHENS • INTERIORS

Visit our stunning showroom:
8b Portman Road, Reading RG30 1EA
Tel 0118 959 9919
www.elementskitchens.co.uk



Adam's Pest Control

Professional Pest Control in Sonning Common
Rats, mice, rabbits, squirrels, moles, insects, foxes.

Available 7 days a week.

BPCA Qualified and Fully Insured

Call 0118 9723709 or 0784 9342690

www.adamspestcontrol.co.uk





The editorial group from left to right: Jo Stoves, Joan Grummant, Christine Atkinson and Diana Pearman.

From the editorial group

We are pleased to welcome two new members to the editorial team Anouska Hawkes, our Junior Editor, and Nick Moore. We are still hoping for more volunteers as the larger the team, the more we will be able to include articles reflecting all aspects of life in our village.

This edition is publicising a very important event, this is the Design Day to be held on 28 April. Organised by a working party of the Parish Council, this will be an opportunity for all residents to have a say in the housing developments likely to take place in the future and to suggest other improvements for our community.

The notice board page is crammed with future events and the In Focus features the Olympic personalities who hope to inspire more young people into a wide range of sporting activities. The message for the youngsters at the primary school is 'to be the best you can be' and to get involved.

The AGM for the magazine takes place on 3 May and it would be good to see a number of you attending to feed back your views and ideas. The editorial team are keen to hear what you think should be included in the magazine, so please come and tell us!!

Diana

DIANA PEARMAN Temporary Editor

Email: editor@sonningcommonmagazine.org

PS...

Sonning Common Magazine is on sale at the village library in Grove Road for £1.50 a copy. Annual subscriptions are available for £15. Contact Geoffrey Adams. Email: chairman@sonningcommonmagazine.org
Phone: 0118 972 2134

Magazine contributions may be posted to: 1 Woodlands Road, Sonning Common RG4 9TD.

WHILE EVERY EFFORT IS MADE TO ENSURE THE ACCURACY OF INFORMATION PRINTED IN THIS MAGAZINE, THE EDITOR AND THE PUBLISHER CANNOT ACCEPT ANY RESPONSIBILITY FOR THE CONSEQUENCES OF ERRORS THAT OCCUR.

Contents

Community news:

- 2 Design Day
- 3 Neighbourhood Planning Work
- 6 Rotherfield United FC / WI Spring Fair
- 7 Grow your own veg / Free medicine reviews
- 10 Noticeboard
- 14 In Focus: The Olympic Journey
- 17 An interview with Gwynn Arch
- 18 Tom Fort / Forest Camp
- 21 Letters
- 22 Greenshoots Open Day / SC Society
- 24 Youth Zone / Just for kids
- 28 Diary Dates

CHAIRMAN

Geoffrey Adams

1 Woodlands Road, Sonning Common, RG4 9TD
email: chairman@sonningcommonmagazine.org
tel: 0118 972 2134

DIARY DATES

Helen Barker

1 Walnut Close, Sonning Common, RG4 9DG
email: helen.barker@tesco.net
tel: 0118 972 1241

ADVERTISING

John Pearman

50 Kennylands Road, Sonning Common RG4 9JT
email: advertising@sonningcommonmagazine.org
tel: 0118 972 2381 / 07794 291776

JUNIOR EDITOR

Anouska Hawkes

email:
junior_editor@sonningcommonmagazine.org

COVER IMAGE

Signposting the future – John Pearman

Your chance to help shape your village the way you want at the Design Day.

Design and artwork by:
tensevennine.
8b portman road reading rg30 1ea
tel 07887 902 376
www.tensevennine.com



Help with the next stage plans for the skate park?

What about some green space for sport?

An invitation from the Neighbourhood Planning Working Party
Sonning Common for tomorrow!

Design day

We need your help to shape your village the way you want

Do we need, how could we get, more shops, cafes, places to meet?

Saturday 28 April 2012
10am – 4.30pm
Village Hall in Wood Lane

What do we do about parking, bus services?

Come along all day to really make and share your own plans, starting with an enjoyable and practical morning session out and about taking photos, looking at maps, telling us what you like and dislike and generating your ideas for the future.

Come along just for the afternoon and see and hear – and add to – what everybody has done in the morning.

**More details nearer the day will appear on the noticeboards/
www.sonningcommonparishcouncil.org.uk**

Where should new houses go? What type? Who for?



What will our Neighbourhood Planning work cover?

- n There will be more homes in Sonning Common. Where should they go? Who might those be for - younger people, retired, those needing easy-mobility housing? On big estates or lots of small sites? What about our valued local countryside?

Under Localism, we now have a new and major opportunity to control much of this for ourselves.

- n How will we make sure that our shops will survive and prosper for people in Sonning Common, Peppard, Kidmore End and other surrounding villages?

Localism gives us less control over this but good evidence, clever tactics and local support will give us a far greater voice when working with SODC and others.

- n SODC's own Recreation and Leisure audits show that we are very poorly provided for sports and leisure facilities in Sonning Common.

We will have a stronger voice on this but we need evidence to make it all stick.

- n And how should we relate to Reading, Henley and other communities around us as they perhaps spread, more roads are planned and transport services change?

The Localism Act gives us no more legal powers over this but we can use the principle of localism to make sure our voice is heard.

Local people YOU can now make a difference – so please join us on 28 April

The Neighbourhood planning working party have already considered the following ...

Site evaluations:

The site evaluation of SON 1-14 has begun and further sites might also be considered.

Housing types:

Need to identify future requirements – starter, family, retirement, apartments, bungalows/affordable housing waiting list/inventory of existing housing stock.

Village development:

Information is being collected from current retailers

Geography and landscape:

Templates are to be used to assess and describe site characteristics.

Services:

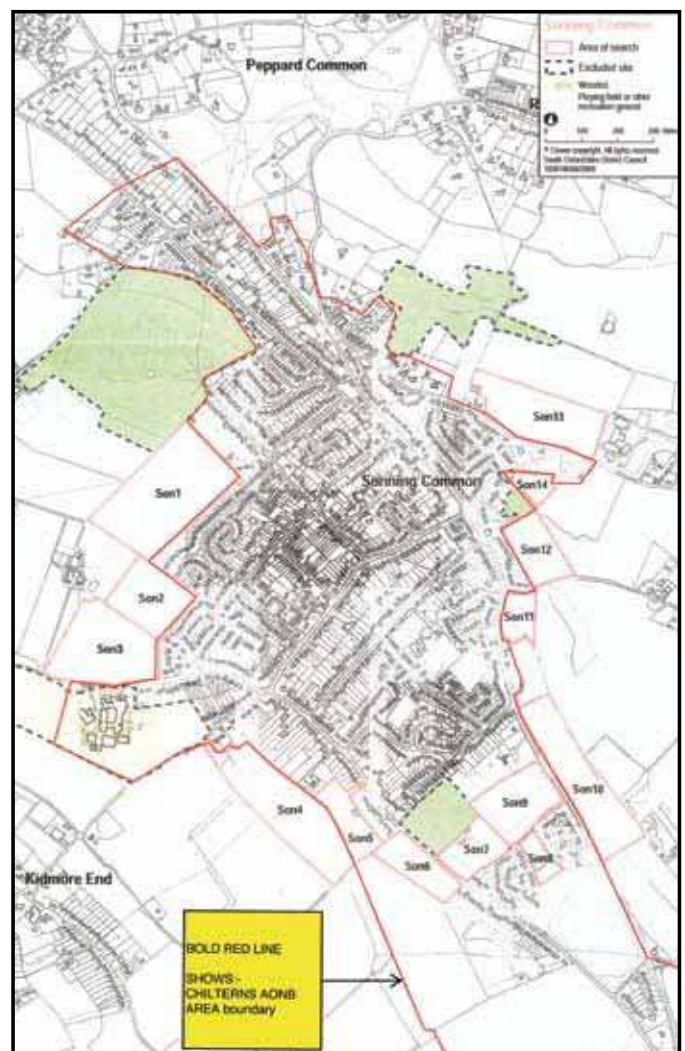
Contact has been made with Thames Water.

Health Centre:


The practice currently has 8,400 patients and could take more from 200 homes.

Bus services:

Data has been collected from the three bus providers.



PICTURE FRAMING
SMALL LOCAL WORKSHOP
Work carried out for local gallery
 Complete framing service
 Canvases stretched
 Mounts cut for existing frames
 Old photographs restored
 Local collection/delivery
 Contact Colin Ward 0118 972 2075


**Oak Grove
 Garden Services**
 LANDSCAPING (HARD OR SOFT)
 FENCING • TURFING • PATIOS • HEDGING
 WATER FEATURES
James Watkins
 'Oak Grove' • 13 Grove Road • Sonning Common • Berkshire RG4 9RH
 Telephone: 0118 972 2659

SPICK 'n' SPAN
**DOMESTIC
 CLEANING SERVICE**


- Reliable, friendly & trustworthy.
- Weekly / Fortnightly cleans
- One-Off Cleans
- All equipment and supplies provided.

Competitive Rates
Please call Louise for a free quotation.
Tel: 0791 429 5167

PEPPARD BUILDING SUPPLIES
 Telephone: Kidmore End 0118 972 2028

**EVERYTHING FOR THE
 HANDYMAN & BUILDER**

**Bishopsland Farm • Peppard Road
 Dunsden • RG4 9NR**




Byways Dental Practice

Quality Care Dedicated Team

Byways provides friendly and professional dental care and is located in the tranquil surroundings of beautiful Checkendon village. Our services include:

- + All aspects of general dentistry
- + Teeth whitening and cosmetics
- + NHS for children & anyone in full-time education
- + Affordable payment plans
- + Flexible opening times
- + Ample free car parking

To book an appointment or for more information call us on 01491 680412 or email info@bywaysdental.co.uk

Byways Dental Practice

 Main St, Checkendon, RG8 0SP Tel 01491 680412

Computer Problems?
Is your PC outdated, misbehaving, virus infected?
 Fault Diagnosis, Maintenance & Upgrades,
 Data Recovery & Migration, Virus Cleaning,
 Networking, Broadband and much more.

Call Robin Piercey
 at Influential Computers on
01491 680036
 or visit www.influentialcomputers.com

GRAHAM S Painting & Decorating – Fascias & Soffits
M AINTENANCE Door & Window Fitting – Plumbing

Fitted Bathrooms – Floor & Wall Tiling – Fencing & Decking
 Wood & Laminate Flooring – Sheds Supplied & Fitted
 Garden Maintenance – Guttering & Flat Roofing etc...



FREE ESTIMATES 0118 972 3114


**JL COX
 Plastering**
 • Ceilings • Walls • Dry Lining • Rendering
 • Pebble Dashing • Patch Repair Work
Call Jamie on 01189 242861
 Or Email : jlcox.plastering@hotmail.co.uk

Robin James OPTICIANS



- Comprehensive eye examinations
- Full contact lens service
- Free specs for children
- Extensive range of designer frames
- Main agent for Zeiss and Rodenstock lenses
- Free parking

0118 947 2099

www.robinjames.co.uk

44 Church St, Caversham, Reading (opposite Waitrose)

BONNER LOCKSMITHS

INSURANCE APPROVED

**DOORS & WINDOW LOCKS SUPPLIED & FITTED,
CHANGED OR UPGRADED (BS3621)**

**DOMESTIC & COMMERCIAL PREMISES
DIGITAL LOCKS • BARS**

FREE NO OBLIGATION QUOTE

ALL AREAS COVERED



CALL OUT SERVICE

01491 680216

CRESTWELL HOUSE

FULL MEMBER
OF BRITISH
LOCKSMITH
INSTITUTE

Beech Lane, RG8 0PX • Woodcote Nr. Reading
PROPRIETOR: S. J. BONNER



C. JONES PLUMBING & HEATING

All aspects of Plumbing & Heating work undertaken.

ALL WORK GUARANTEED

**TELEPHONE:
0118 972 3394**

**MOBILE:
0771 110 9077**



Red Kite Electrical



Domestic Electrical & Solar Power

Find out more at: www.redkiteelectrical.co.uk

Call a locally based electrician.
No job too small. Free estimates.

Phone: 0118 907 6342

Mob: 0788 2737402

Email: sparks@redkiteelectrical.co.uk
17 Burnham Rise, Emmer Green

City & Guilds qualified
NAPIT Part P approved



Kidbys Sheds & Timber Buildings

Tel: 0118 972 33 80

Kidbys Yard, 28 Kennylands Road
Sonning Common, Reading, RG4 9JT
www.kidbys.co.uk Fax: 0118 972 10 02

Mike Farina AUTO SERVICES



SERVICING

REPAIRS & WELDING

MoT TEST ARRANGED

COMPETITIVE RATES

• ALL MAKES OF VEHICLE UNDERTAKEN •

21 SEDGEWELL ROAD • SONNING COMMON
Tel: KIDMORE END 0118 972 4036

SPRUCE MAINTENANCE SERVICE

For all your property maintenance requirements including, decorating inside and out, paper hanging, wall & floor tiling, carpentry, hand painted kitchens and furniture, water damaged ceilings & Insurance work. Hedge and grass cutting services.

ROB SMITH
TEL: 0118 972 4560



VILLAGE BARBERS

0118 972 3930

**24 PEPPARD ROAD
SONNING COMMON**

10% OFF WITH THIS VOUCHER
CHILDREN'S PLAYROOM

CUTS - £10.00 GRADES - £8.00 CHILD CUTS £9.00
CUTS & BLOW DRY - £10.00 RESTYLE - £15.00
SENIOR CITIZEN - £7.00 BEARD TRIM £4.00



Rotherfield United Football Club have moved

Maybe Sonning Common will get their skate park at last!



Rotherfield United Football Club have acquired Bishopswood Sports Ground as their new home ground. The agreement concludes 18 months of negotiation and legal process to provide the club with a significant increase in its facilities and available space.

A public meeting was held on Monday 27 February in Sonning Common village hall with approximately 60 interested people attending. Andy Davies gave a presentation explaining the legal situation on use of the ground and on the clubs plans and hopes for the future including:

- n Public access for informal recreation
- n Provision of a new public footpath
- n Skate park
- n Pavilion
- n Cricket pitch
- n More dog bins
- n All weather pitch
- n Flood lighting for winter training

Club Chairman Andy Davies said 'whilst it is sad to leave the old ground we have outgrown it and cannot accommodate the 20 teams that

now play for the club. We wanted to stay close to our origins and Bishopswood offers the club the ideal opportunity to realise its potential. We will continue to allow other clubs and teams to use the facility, including baseball and tennis, as our aim is to build a thriving sporting facility.'

Rotherfield United Football Club was established in 1973 and achieved FA Charter Standard status in 2010. It runs teams from Under 5 through to adult including its 1st team which play in the top division of the Reading League.

Andy went on to say 'My thanks goes to all the hard working volunteers, they truly make Rotherfield a special club. Furthermore we mustn't forget the efforts of the founding members who managed to purchase our original ground. Without their efforts we would not have been in a position to take advantage of the opportunity to acquire Bishopswood.'

Rotherfield's acquisition does not include the part of the woodland that was included in the 2007 transfer. This remains in the ownership of Bishopswood Pavilion Limited.

The Parish Council are already in talks with the club regarding the skate park, and the club are keen to improve links with the local schools. There were questions taken from the audience and the whole meeting was well received. Douglas Kedge spoke for the Parish Council thanking the club for trying to move the sports ground forward into a great facility for the local community.

If you have any questions please feel free to contact Andy Davies on 07900 697513 or via email andy.davies@rotherfieldfc.com or visit www.rotherfieldfc.com n



WI Spring Fair and Open day

I've lived in Sonning Common for about 5 years and I have always intended popping along to a WI meeting but have never made it. So this wet St Patrick's Day morning I made the effort to get down to the Village Hall for the WI Open Day.

Jackie Million, was thrilled to see so many visitors and told me "the WI is an integral part of the village, serving the villagers. The original idea was for a simple coffee morning to publicise the WI and attract more members". But the idea had grown. It had taken members Alison Bishop, Jane Holmes and Gill Hayward a year to organise the event to highlight the diversity of the WI.

There were cakes, books and beautiful flower arrangements for sale; an impressive display of crafts, tombola, a raffle with most of the

highly desirable prizes donated by local businesses, an archive of photos prompting much reminiscence and the opportunity to try your own hand at card making, flower arranging, cross stitch, button hole making or finger knitting.

The Sonning Common branch of the WI, formed in 1956 and currently has 40 members all of whom were busy staffing stalls and chatting to visitors. Members told me how membership of the WI had helped them -

- n make new friends on moving into the village,
- n visit places they would never dreamt of visiting on their own,
- n attend courses available at Denman College in Marcham,
- n attend monthly meetings and some of the National Campaigns.

Jackie felt "the morning has been a great success and was just as pleased that some villagers had come in for free tea and cakes as I was with the number of people interested in joining the WI".

YOU are welcome to visit one of their meetings.

Contact Jenny Titchener, the Membership Secretary; 0118 972 4705

I think I've been converted, so see you there!

JO STOVES



Grow your own veg

Be sociable and have fun

In January, more than 18 Allotment holders met with Councillor John Stoves, Parish Clerk Philip Collings and Douglas Kedge Chairman of the Parish Council to discuss the management of the allotments on Horseponds Road.

The work on tidying up the site which had begun before Christmas seemed to have inspired the allotment holders who were full of ideas for further improvements. Discussion was lively and positive, covering a diverse range of topics including shutting the gate, the condition of boundary hedges, road safety on exiting the site, revision to the tenancy agreement and keeping livestock.

The Parish Clerk, who is responsible for managing the allotments, agreed to look into these issues and the meeting decided that the formation of an Association should be further discussed when progress had been made.

As a result of the meeting, a wet Saturday March morning saw an enthusiastic group of allotment holders carrying out a mass clearance of the site which resulted in several bonfires and an enormous heap of detritus.

Allotments don't only mean fresh veg. and exercise. They are very social and great fun. If you would like to know more about allotment holding in Sonning Common, please contact Philip Collings at the Parish Office – 0118 972 3616. n

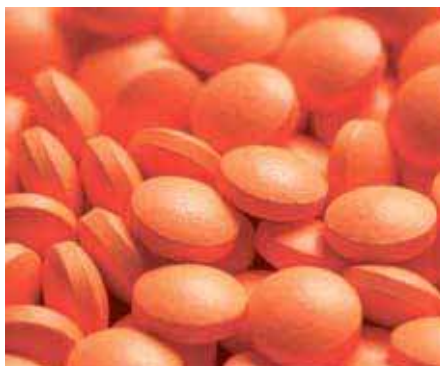
Take part in the free medicines use review

and earn money for village charities

Day Lewis pharmacy in Sonning Common is taking part in a Free Medicines Use Review (MUR) scheme. This is part of their core purpose of helping people in the community to stay healthy and feel better. Studies show that around a half of all prescribed medicines aren't taken properly and this service enables people to learn how to take medicines for the maximum effect.

When picking up a new or repeat prescription anyone is eligible for a free medicine check that looks at side effects, dosage, and the understanding of instructions. After the check the patient is given a token that can be used for supporting the charity of their choice.

Local charities for this year are FISH, Sonning Common Pre School and Sue Ryder. The charity with the most tokens receives a cheque. Not only is this a valuable service but it encourages use of our local shops. n



Running for the Red Cross

On 22nd April Lucy Preece will be running the London Marathon. Lucy, who lives and works in Sonning Common, is aiming to raise £2500 for the Red Cross, to help with their vital work in the UK and abroad. Please consider sponsoring her at <http://uk.virginmoneygiving.com/lucyandrob> n



Our Library is saved BUT...

Sonning Common Library will remain open, albeit with a 50% reduction of professional staff time. The Save Our Library (SOL) group has achieved what it set out to do – keep the library open - knowing that once closed (which was the threat) it would never have re-opened, as and when the economic situation improved.

However, there is still a job to be done. Volunteer help in the library and fund raising is now the agenda to maintain the current opening hours. When there is more information available from the County Council, the SOL group will call a meeting for the village to establish a new committee to take this work forward. n

STOP PRESS...STOP PRESS...STOP PRESS...

News just in ... concerning the planned Kennylands Road development (SON 5). The inspector has dismissed the appeal and planning permission to build 50 houses has been refused! n



**EVERYTHING
IN THE GARDEN**

Established 1985
Now in Stoke Row

*All types of design, construction,
maintenance and improvements.*

**Tel: 01491 641311
Mob: 07810 112411**



**01491 682412
07808 162985**



Established Before 1879

**TOMALIN
AND SON**

FUNERAL DIRECTORS
INDEPENDENT FAMILY RUN FUNERAL SERVICE

ANDERSON HOUSE

38 READING ROAD • HENLEY-ON-THAMES

Telephone: 01491 573370



Pre-paid Funeral Plans
GOLDEN CHARTER

E. T. Sheppard

**MONUMENTAL
MASON**
SINCE 1940

Brochures on request or visit our Showroom at:

36 Reading Road • Henley-On-Thames

Telephone: 01491 574644

**YOUR NEW LOCAL
MoT TEST STATION**
EST 1998

**HENNELL VEHICLE
SERVICES**



- • MOT TESTING
- • SERVICING & REPAIRS
- • ENGINE DIAGNOSTICS
- • VEHICLE AIR CONDITIONING
- • LASER FOUR WHEEL ALIGNMENT

BOOK YOUR MoT NOW

Tel: 01491 628866

www.hennellvehicleservices.co.uk

Unit 19 Greys Green Business Centre
Rotherfield Greys, Henley-on-Thames
Oxon RG9 4QG



JJC Electrical Services Limited

Sonning Common Electrician

Jerry Cole

Telephone: 07834 346 487

E-mail: jjcelectservltd@tiscali.co.uk

Website: www.jjcelectservltd.co.uk

- Fault diagnosis, repair and rewires
- New installation work
- Fuse board changes
- Lighting advice and installation

ELECSA

Approved Contractor

www.elecsa.co.uk



T'ai chi for Health

Kidmore End War Memorial Hall
Reades Lane, Sonning Common

Tuesday 9.30-10.30
During term time

Chen style Tai chi in a friendly informal class
Improve your stamina, balance,
strength & co-ordination

For further information
please ring Debbie on 07802 347943
www.debbiepage.org



Functional Physio



Sonning Common Health Centre
Chartered Physiotherapists
Jo Pereira MCSP
Catherine Matthews MCSP

• Flexible appointments
Clinic: 01189 722 745
www.functionalphysio.co.uk

Back pain
Neck pain
Sports injuries
RSI
Joint pain
Sprains
Strains
Headache
Pre/Post op
Pre/Post natal
Pilates

T.C. FULLER PLUMBING & HEATING

• Installation • Maintenance • Service • Repair
Boiler replacement, heating system upgrade & adaptations, power flush.
Hot water cylinder replacement.
All plumbing work undertaken.
Bath/Shower rooms, water softeners-salt supplied.
• No call out charge • Free estimates • Fully insured

Tel: 0118 9724097
Mob: 07800 914 880



Family Hairdressing
In the comfort of your own home

Ring Maureen on:
0118 972 1074

Fully qualified in all aspects of hairdressing

Stafford & Son

Local Garden & Building Maintenance Services



Offering services in all aspects of garden and grounds maintenance, be it large or small.

Interior and exterior building maintenance, including gutter repairs and clearing.

General handyman / "man with van" services. All jobs considered at competitive rates.

Andrew Stafford

Call: 01491 642191

Mob: 07899980137

HEATH & WATKINS

HARDWARE, PAINT, TOOLS, GARDEN ACCESSORIES, BEDDING PLANTS AND SHRUBS, PRE-PACKED COAL THROUGHOUT THE YEAR

**MAIN AGENTS FOR SUTTONS SEEDS.
SHEARS HOLLOW-GROUND & SHARPENED.
ALL TYPES OF KEYS CUT.**

CYCLE SPARES & REPAIRS & EVERYTHING ELECTRICAL

**41A WOOD LANE, SONNING COMMON
KIDMORE END 0118 972 2107**

Mr FixiT

Repairs & Maintenance for almost anything!

All building maintenance and repairs, interior / exterior.
Decorating, Floor / Wall Tiling, Plumbing, Electrical,
Woodwork, Glazing.

Specialist Paint Effects and sympathetic restoration for older properties.

Kitchens, Bathrooms and Conservatories refurbished.

Landscaping, Patios, Water Features, Fencing,
Hedge and Tree Cutting.

Sheds and outbuildings repairs and maintenance

No Call-Out Fee and Free Estimates

07752 759908



gunningplumbing.com

• plumbing • heating • gas •

**ALL DOMESTIC PLUMBING, HEATING, & GAS WORK
INSTALLATIONS, REPAIRS, & EMERGENCIES**

**CAVERSHAM BASED
GAS SAFE REGISTERED ENGINEER
SERVING READING & THE SURROUNDING AREA**

CALL ANDREW ON 07815 304 931

www.gunningplumbing.com





Summer Front Garden Competition Sonning Common Village

Let's make the village blooming beautiful this summer!

This is an annual competition, administered by Chiltern Edge Horticultural Society. Gardens are nominated for entry to the competition and are judged by a panel of members of the Sonning Common Society, who also provide the cup for the winner. Judging will take place in July. So there is plenty of time to get your front garden bursting with blooms and to check out which is the most striking in your road. Details of how and when to submit your nominations will be in the next edition of the magazine.

And they're off!

Grand National-style shetland pony race to be held at Nettlebed Hospice

Shetland ponies are to gallop around the grounds of Sue Ryder-Nettlebed Hospice once again - some 30 years since their last race on the site.

Sunday 27 May

"Our thanks go to Charlotte who is a passionate supporter of Sue Ryder. We are very grateful to her and her family and friends for organising this amazing event."

Tickets can be pre-booked online for £6.50 for adults and £3.50 for children by going to www.shetlandshow.co.uk

Sue Ryder



Audrey's mum Charlotte occasionally rode Pixie when she was young

Village hall news

ART WORK required from all you talented people of Sonning Common...

I know how much the art work has been enjoyed so far. It has been featured quite rightly, in the Henley Standard. It is just terrific to see our local children yet again demonstrating their skills - thank you.

EXCITING NEWS - in May we want anyone, any age, with any sort of art work be it knitting, painting, weaving or sewing, to mount your work with your name and address on the back and proudly display it in the hall. This is your hall let us support your achievements. Please phone me if you are interested on 0118 972 2312

SUE FRAYLING-CORK
Chairman

Keep this date free for next
CESA event at Chiltern Edge
Bingo Night - 3 May 2012

No admittance under 18.

Licensed Bar and Food available. Raffle and Bingo prizes to be won
For further information email cesasect@yahoo.co.uk



Queen's Diamond Jubilee
Champagne Tea Party
flag waving and singing!

Sunday 3 June at 3pm
Village Hall

Tickets available 1 May from Occasions
£5.50 including glass of champagne



Electronic health records are on their way...

From late Spring 2012 anyone aged 15 ¾ yrs. and over will have to decide whether they want a Summary Care Record and will receive a freepost mailing that enables them to opt-out of this if they prefer.

Look out for more information...or go to www.connectingforhealth.nhs.uk

Register now for the 2012
"On Your Bike" – which will
take place on Sunday April 22
starting at 10.30am.

The event has also expanded this year to offer a new
activity – On Your Feet – which will offer 2 Olympic
themed treasure hunts around Sonning
Common Village. Entries -
www.onyourbikesonningcommon.co.uk.

Fund raising for Sue Ryder, Sonning
Common Primary and Wheelpower
(page 15 for more information).



Road works in Sonning Common

Find out what is happening at elgin.gov.uk and type
in your post code

Location	Start date	Estimated finish date
Peppard Road	4.1.12	27.3.12
Reades Lane	13.2.12	16.4.12
Kennylands Road	23.4.12	04.05.12

Road closed between Westleigh Drive and Reades Lane
Diversion in operation.

All are invited Sonning Common Magazine Annual General Meeting on Thursday 3 May at 7.30pm in the Village Hall

Wine or fruit juice and nibbles will be served and an
entertaining guest speaker, Philip Collings will put us in the
mood for the business – which won't take long!
The magazine is in good health but we do need more
helpers – anyone to write a sports page for instance? Have
you any suggestions for content? Please come and tell us.

GEOFFREY ADAMS
Chairman

Save the date Nottakwire Summer Celebration

Saturday 30 June 2012

Village hall, Wood lane

3 x 2 hour time-slots, running through the day - 60
minute concert plus 45 minutes to enjoy flower displays,
tombola, summer- themed refreshments

Nottakwire aims to raise £1000 for village organisations.

Road safety crossing person wanted

We are concerned about the safety of the
pupils at our school. Some children have
to cross the road by themselves and it can
be very busy in Grove Road and therefore
dangerous. As a result we would like to appoint
someone who would be available, before and
after school. We are looking for a kind and
caring person who would like to help children.

If you are interested and would like more
information, please contact Sonning Common
Primary School on 01189 722 105 or email
office.2506@sonning-common.oxon.sch.uk

**SCHOOL COUNCIL AT SONNING COMMON
PRIMARY SCHOOL**

Calling all under 5's (reception class) RUFC needs you!

Saturday morning at Bishopswood Sports Ground,
RG4 9BT, from 9.30 to 10.30am

The training is focused on playing a number of
fun football related games

An introduction for boys and girls, to football and
playing sport in an organised environment.

Licensed FA Coaches/ appropriate first aid
qualification/ CRB checked.

Rotherfield United is a friendly club that offers
football training, coaching and organisation of
teams from under 5 through to adulthood.

Benefit for parents - Coffee Shop
offering hot and cold refreshments
and snacks.

For further details please
visit the club's website at:
www.rotherfieldfc.com



WEE-COT SEATING

Upholstery, Loose Covers, Replacement Cushions, Chair Caning, French Polishing & Furniture Repairs

LIZANNE SMITH TEL: 0118 972 4560

LAVENDER-HOUSE BEAUTY

Senna Spray Tan, Lash Perfect Eye-Lash Extensions,
Lash/Brow Tint, Shellac Gel Manicure/ Pedicure,
Sports Massage, Swedish Massage, Waxing.

20 WOOD LANE SONNING COMMON RG4 9SL

Evening Appointments Available

07733 317127

www.lavender-house.co.uk



www.avialandscapes.co.uk

- Design and Build • Maintenance • Brickwork
- Patios • Decking • Water Features • Irrigation
- Fencing • Plant Supply.

T: 01189 722 181 E: tony@avialandscapes.co.uk

COLLINS, DRYLAND & THOROWGOOD LLP SOLICITORS

announce that as from 4th October 2010

Mrs Wendy Holmes will be working from our office at
12 Hart Street Henley-on-Thames RG9 2AU

Telephone: 01491 572323

email: wendyholmes@collins-dryland.co.uk

David Shailes

PLUMBERS & DECORATORS

- Bathroom Suites, Toilets, Basins
- Showers, Radiators and Repairs
- Full Interior &
- Exterior Decorating
- Wallpapering

10% DISCOUNT OFFERED
WITH THIS ADVERT

CALL TODAY FOR A FREE ESTIMATE

Tel: 0118 934 5029 Mob: 07708 602442

email: david.shailes@ukf.net

HEIGHTS Tree Care

- All Aspects of Tree Work
- Hedge Cutting
- Private and Commercial

Fully Qualified Professionals

£5 Million Public Liability Insurance

Laurence Williams

Phone: 0118 9484274

Mobile: 07813 586 735

Email: info@heightstreecare.co.uk

Web Site: www.heightstreecare.co.uk



Computer Frustrations?

*Friendly local help with PC problems,
upgrades, wireless,
broadband and networking.*

Free advice, reasonable rates.

Call David on 07980 129364

or e-mail:

help@computerfrustrations.co.uk



Interior & Exterior Decorating

Plastering, Artexing, & Coving

Solving Artex problems / Floor & wall Tiling

Kitchens, Bathrooms, and P Certified Electrician

COMPLETE HOME IMPROVEMENTS

CBT Registered / 30 Years Experience / NHBC Awarded

Adrian Brown

Tel: 0118 9721442 / Sonning Common / Mobile: 07880 542363

Email: textureplus.adrian@btopenworld.com

Website: www.textureplus.co.uk

JEN'S MOBILE HAIRDRESSING AND BARBER SERVICE

13 years experience

MEN'S CUT £7
WOMEN'S CUT £10 C/B DRY £15
CHILDREN'S CUT £5
COLOUR & HIGHLIGHTING AVAILABLE

07753 253 476
jenshairstervices@hotmail.co.uk



wood lane dentistry

Vik Chugani BDS MFDS RCSEdM MSc
Richard McQuillan BDS

- Your local family friendly practice
- Routine general dentistry
- Affordable dental plans with Denplan
- Children seen on the NHS
- Tooth whitening
- Cosmetic dentistry and Implants
- Ample free parking

Now taking on new patients
Saturday and evening appointments available
HAPPY HEALTHY SMILES ...

Wood Lane Sonning Common Reading Berkshire RG4 9SJ
www.woodlanedentistry.co.uk Telephone 0118 9722626




**YOU READ IT
HERE FIRST**

If you respond to any of these ads, please mention sonning common magazine

ROOFING SERVICES

A GORDON
Specialist in Slating, Tiling and Flat Roofs
All work guaranteed

Advanced Level City & Guilds
Advanced Level City & Guilds

Telephone:
01491 576 463



Foster Interiors
The Local Soft Furnisher
CURTAINS
UPHOLSTERY & LOOSE COVERS

Made to the highest standards from an extensive range of fabrics brought to your home.

Complete fitting and advisory service.
Curtains hung and dressed, ensuring complete satisfaction – Most competitive prices

Telephone: 01491 680291
for reliable and personal service



PODIATRY CLINIC

Professional treatment & advice for your feet

Contact
Heidi Snookes-Owen
PODIATRIST/CHIROPODIST
B.Sc., D.Pod.M., S.R.Ch., M.Ch.S.
HPC REGISTERED

0118 972 4742

CERAMIC WALL & FLOOR TILING

Adhesive / Grout / Trims Supplied
Floor Levelling & Plastering
Free Estimates & Advice

Call Mick 0118 901 1777 / Mobile: 07841 586003

A. SIMMONITE

PAINTERS & DECORATORS
GUTTER REPAIRS & REPLACEMENT

FREE ESTIMATES 0118 972 2667

KIDMORE END PRE-SCHOOL


A child's first steps into education within a caring environment

We are a small, friendly pre-school caring for children from 2 years 6 months to 5 years in a beautiful village setting. Various sessions available.

We are OFSTED inspected and registered for Early Years Funding.

For more information, please call Louise on 0118 924 2740

Registered Charity number 104-6030
The Parish Rooms, Wood Lane, Kidmore End, Reading, RG4 9BB.





Be as good *as you can be!*



By **CHRISTINE ATKINSON**

Sonning Common Primary School are embracing the Olympic year with an ambitious 20 week Olympic journey where they will introduce the children to all the Olympic and Paralympic sports, leading up to the Olympic Flame passing through Nettlebed on 10 July .

This is primarily taking place during school assemblies, once a week, with speakers from local clubs and Olympic competitors.

Archery, fencing, wheelchair power lifting, basketball and athletics have already been covered since the launch in January. The culmination will hopefully be for the children to see the Olympic Torch as it is run through Nettlebed towards Henley, during the grand tour of the country in July. The annual Sports Day at the school on the 11th may include an opening ceremony with flag bearers.

Opposite are stories from different perspectives on the power of sport. n





Alan Pascoe

"Be the Best you can be" was the message to the children from the Olympic, Commonwealth and European Medallist Alan Pascoe, MBE, who joined the school running club - Sonning Common Striders - for an early morning run in the snow, before delivering a memorable talk as part of the pupils' 20 week Olympic journey.

The British sporting legend, who is now Chairman of the Number 1 Sports Marketing Agency in the UK, brought a host of sporting memorabilia for the children to see, from medals, to an Olympic Torch from 1948, competition vests and shoes and photographs of his medal winning performances. He spoke of his passion for all sports, and how he had played football, rugby and loved swimming, before discovering the hurdles.

Alan explained how, suffering from asthma since childhood, sport had helped him to remain healthy, and how exciting the Olympics would be, not only for those who were lucky enough to have tickets, but for everyone watching on TV. A short video was shown of some of the paralympic sporting events which will be held at their games in September. He also told the children how he had once met a very young Usain Bolt at a press conference when he was just starting his running career at 18.

BBC Radio Berkshire's Maggie Philbin spent the whole morning at the school and broadcast live interviews on the Andrew Peach breakfast show with Alan Pascoe, the children and staff. n



Chris Rattenbury

Every year there are many men, women and children who may become disabled due to an accident, injury or illness and may need to use a wheelchair. This does not exclude them from taking part in sport or becoming a world /Olympic champion.

In the late 1940s Professor Sir Ludwig Guttmann began to use sport as a vital part of the rehabilitation of Second World War veterans. He set up a competition between sports clubs and other hospitals to coincide with the London Olympic Games at Stoke Mandeville Spinal Unit in Aylesbury. The first international Paralympic (para comes from the Greek for alongside / beside) event was held in 1960 in Rome.

Chris Rattenbury World and European Paralympic Powerlifter, told his story of how sport had enabled him to travel the world, maintain health and fitness and achieve a level of success he never knew was possible. Suffering from Cerebral Palsy from birth, Chris has always been in a wheelchair but through the persistence of his father he took up sport, trying all manner of different events until settling on power lifting. n

Ollie Moore

Ollie told the children about an inspirational young woman who had become disabled through a car accident only two years ago and is now one of the top wheelchair racers in the country. It was a very powerful message.

In February the children heard from Ollie Moore who works for WheelPower, a volunteer led charity. Their aim is to transform lives of disabled people by giving them the opportunity to play sport and lead healthy active lives. Each year WheelPower introduces over 1,000 disabled people in Britain to sport and enables over 5,000 to participate regularly through a range of sporting programmes. n



Laurence Halsted

He is the son of two Olympian fencers and is currently No2 in Great Britain.

Laurence came to talk to the children on the 23 February about his chosen sport. He finished runner-up in the European championships in 2008 and third in the World Student Games in 2007 and told the pupils about the sport and equipment that fencers need. He was full of enthusiasm, and the passion he has for his sport really inspired the children.

He said "Fencing combines physical and mental attributes better than any other sport I have come across, so it is perfect to keep you engaged and is complex enough to keep you passionate. I have been professional for the last five or six years but the Olympics are everything in my life at the moment. I can't really sum up how much but it is huge." n





High quality education and child care under the Early years foundation stage (EYFS) for children 4 months to 5 years

- *Good OFSTED report*
- *Pre-school sessions available*
- *Open all year, Monday to Friday, 7am to 7pm*
- *Flexible hours*
- *Early years education grants available*
- *Curriculum includes French, Music & Movement and Thames Valley Gym*
- *Small friendly and personal care in Sonning Common*

For further information, please ask for the manager on 0118 972 4783, or visit our website.

www.alphabetdaynurseries.com
 emails: info@alphabetdaynurseries.com

TradeMarkTM

**WINDOWS ♦ DOORS ♦ CONSERVATORIES
FASCIA ♦ SOFFITS ♦ GUTTERING ♦ CLADDING**

Use your Local Installer with 25 years experience

**For a FREE quotation
Call Mike Dockree on
07785928190 or 0118 972 4376**

All window and door installations carry a 10 year guarantee and the finished product is independently inspected with all certificates



**WINDOWS ♦ DOORS ♦ CONSERVATORIES
FASCIA ♦ SOFFITS ♦ GUTTERING ♦ CLADDING**

CAVERSHAM AERIAL SERVICES



0118 967 3596

Digital TV aerials, Sky, Sky HD, Freesat and freeview DAB & FM aerials

14 Odiham Avenue RG4 6PU

Cavershamaerials@gmail.com
www.caversham-aerials.co.uk

HELPLINE LANDSCAPE SERVICES

Landscaping - Design, Construction, Garden make over,
 Groundwork - Clearance, Footings, Drainage, Grading,
 Timber work - Gateways, Decking, Arches, Pergola, Gazebo,
 Fencing - Panel, Close Board, Wire mesh, Stock fence,
 Gardening - Mowing, Weeding, Pruning, Clearance,
 Tree work - Felling, Lopping, Pruning, Clearance,
 Driveways - Gravel, Paved, Brick, Concrete,
 Ponds - Water features, Ponds, Rills,
 Patios - Slab, Stone, Pavers, Brick,
 Log's for sale - Cut and split to size.

Based in Sonning Common
 Tel / Fax: 0118 9721342
 Email: chriscolbeck@btinternet.com

Autumn Leaf

PET COUNTRY SUPPLIES

We stock all types of

- ✓ Animal Feed
- ✓ Frozen Meat
- ✓ Farm Feeds

We Stock Products for

- ✓ Animal Well Being
- ✓ Wild Birds
- ✓ Ponds
- ✓ Farm Animals
- ✓ Domestic Animals
- ✓ Wild life
- ✓ Toys and Beds

We have been trading in the village for over 40 years
 We have old fashioned friendly Service
 We can't stock everything but we can get most things
 for your pet! We deliver free on orders over £25.00
COME AND SEE US !!

43a Wood Lane

Sonning Common RG4 9SJ

0118 9723495

Email interestedin@petcountrysupplies.co.uk
www.petcountrysupplies.co.uk

Open.....Mon to Sat 9.am to 5.30pm (5pm Sat)

9am to 4pm Weds

Closed all day Sunday and Bank Hols

**You may be surprised
we now stock**



Also We Sell
 MEMBERSHIP for
**SHIPLAKE & BINFIELD
 ANGLING CLUB**

AN INTERVIEW WITH...

Gwyn Arch

By JOHN PEARMAN



A well-known figure in Sonning Common celebrated as a musical director, composer and conductor, Gwyn Arch had a somewhat 'happenstance' entry into the career which has absorbed his energy, talents and enthusiasm for the last 45 years.

Music played an important part in Gwyn's early life, born to Welsh parents in Southampton, his father later became ordained as a Church of England Vicar and not long after this Gwyn found himself singing in the choir of his Father's church.

Taking piano lessons from the age of 12, he studied music to A level. He broadened his musical education by listening to American Forces Network radio broadcasts under the bed clothes at night (many readers will remember doing similar with Radio Luxembourg) providing Gwyn with an appreciation of a wide range of musical styles.

Opting to study English rather than Music at Cambridge University, Gwyn was soon involved with the University Jazz Band as their piano player. Following his graduation he moved to Oxford University to complete his professional teaching qualification, as Gwyn comments,

'Having been at Cambridge I thought I would see what the other place was like'. His time at Oxford brought him a claim to fame; playing piano with the Oxford University Jazz Band, probably the only person to perform the same musician's role at both Universities. He also met his future wife, Jane.

His first teaching post was at Rickmansworth Grammar School, where he eventually became Head of English and responsible for the school drama club where girls outnumbered the boys. Unfortunately the plays available had few parts for girls so, with considerable resourcefulness, Gwyn wrote a musical with a large female chorus.

The girls so enjoyed the experience they persuaded Gwyn to form a girls' choir and he started writing musical arrangements for them and has not stopped since. The musical was published and became the first of over four hundred compositions and arrangements to be published since that time.

After ten years of teaching English and studying musical composition on a part time basis, Gwyn was ready for a new direction. In 1965 he was appointed as Head of Music at the newly opened Bulmershe College of Higher Education. Following this appointment Gwyn and Jane settled in Sonning Common first in Redhouse Drive then later moving to Grove Road.

Jane, a keen singer, was soon invited to join the South Chiltern Choral Society and a year later Gwyn was offered the position of conductor with the society, a role he continues to this day. Many residents will have attended Choral Society concerts at Chiltern Edge School and other venues over the years and will know of the great range of their performed works from Bach to Bernstein. Gwyn's name is also closely associated with

the Reading Male Voice Choir founded by Gwyn in 1971 and still going strong after more than 40 years. The choir performs some 12 concerts a year all in aid of charitable causes.

In Gwyn we have a true musician in our midst. It was a pleasure talking with him as he recounted his personal history. His love of choral singing and working with choirs of all ages shines through, as does his firm belief in community based music making – and he still plays piano in a Jazz band.

Oh, and one thing not mentioned during our talk but well worth commenting on as a finale ... in December 2006 the Queen awarded Gwyn an MBE for services to music in Berkshire. [n](#)



Tom Fort

PIANO MAN

If you happen to be strolling along Baskerville Road between 8.30 and 9 am of a Wednesday morning, you may be distracted by the sound of a piano being maltreated, interspersed with cries of anguish. That is me having my piano lesson.

For the past four years of so I have subjected myself to this ordeal most weeks – and the suffering goes on. The idea was that I would keep my now 11-year-old daughter company as she learned – even that we might one day play duets

together. Fat chance! Her elastic mind and dextrous little fingers have taken her to the verge of Grade 3 with an apparent minimum of effort, while I am left trailing miles behind.

My progress could be described thus: I stagger – I trip – I fall. I get up, I stagger, I trip, I fall. Sometimes I lie prone, in despair. The staggering is as good as it gets.

My teacher, the saintly and wonderful Jean Dudman, has high standards. This week she observed that my middle finger was playing an A one fraction

before my little finger hit the supposedly simultaneous C. I listened. The difference was perceptible but infinitesimal. Could she not let me off? She could not. I tried, I failed, I howled in mental agony.

So why do it? Why endure such pain and pay for it? Jean Dudman assures me that attempting something so damned hard at my age is good for me and may help slow down the inevitable slide into senile incompetence. Perhaps. My reason is simple. I have always loved listening to music



for piano and always longed to understand more of why it moved me so, and this is the only way.

I used to say to myself that I would die contented if I could play just one Bach Prelude and Fugue. Now I say, forget the Fugue. Will I make it? Only time will tell. [n](#)

Help to protect Forest Camp

Vandals have attacked Forest Camp at Sonning Common Primary School once again causing £800 worth of damage.

Forest Camp leader Philippa Byrne couldn't believe it when she returned to the camp after the February half-term holiday to find collapsed tents and children's collections and debris strewn around the site in the primary school grounds.

She said: "It looked as though the vandals had taken poles from the tents and used them to vault over the fence. Many of the straw bales around the slide had been cut and straw was scattered all over the site.

"Children's collections of clay models, old coins, red kite feathers, bones and wasp nests were all broken and scattered; their wildlife magazines and books shredded.

"The children have put so much effort into building and developing Forest Camp. It is all their own work and they get so upset when it is attacked. It is very demoralising when the equipment we have fund-raised so hard for is destroyed."

Forest Camp is an outdoor classroom which is used to teach children about the environment and to help them to develop outdoor skills. Since its creation by mainly four to seven-year-old pupils, it has been vandalised at least four times.

The school is exploring new ways to improve security on the site and is urging local residents to contact either the school office on 0118 972 2105 or the police if they see anything suspicious. [n](#)



TOP: Back row, L-R: Charlie Thomas, 8 and Lachie McGowan, 8. Front row, L-R: Grace Newbold, 8 and Lucy Dawson, 9. The children are standing in front of a tent that was vandalised.
BOTTOM: Grace Newbold, 8, left, and Lucy Dawson, 9, are pictured tidying up some of the straw that was left strewn around Forest Camp by vandals.

Church news for the parishes

Christ the King, Sonning Common and St. John the Baptist Kidmore End

29 February Lent course for five Wednesdays at Christ the King at 2pm or 7.30pm

"Handing on the Torch – Sacred words for a secular world";

All Saints' Church Rotherfield Peppard

Services for Holy Week and Easter

1st April Palm Sunday

9.00 am Holy Communion
10.30 am Family Communion
6.30 pm Evening Prayer

6th April Good Friday

10.00 am Morning Prayer and Litany

2.00 pm Devotional Hour

8th April Easter Day

9.00 am Holy Communion
10.30 am Sung Eucharist
6.30 pm Choral Evensong

Easter Services at St Michael's Catholic Church, Peppard Road, Sonning Common

Sunday 1 April – Palm Sunday

Blessing of the Palms
9.00 am and 10.30 am

Monday 2 April – Service of Reconciliation

7.00 pm

Maundy Thursday 5 April

Celebration of the Lord's Supper
7.00 pm

Good Friday 6 April

Walk of Witness through Sonning Common
Gather at Christ the King Sedgewell Road
Stations of the Cross
Good Friday Liturgy
10 am
12 Noon
3 pm

Holy Saturday 7 April – Vigil

Commemorates the time that Jesus lay in the tomb. Easter Vigil, the Resurrection of Our Lord. Begins with the blessing of New Fire from which the Paschal candle is lit.
9 pm

Easter Sunday 8 April – Masses for Easter

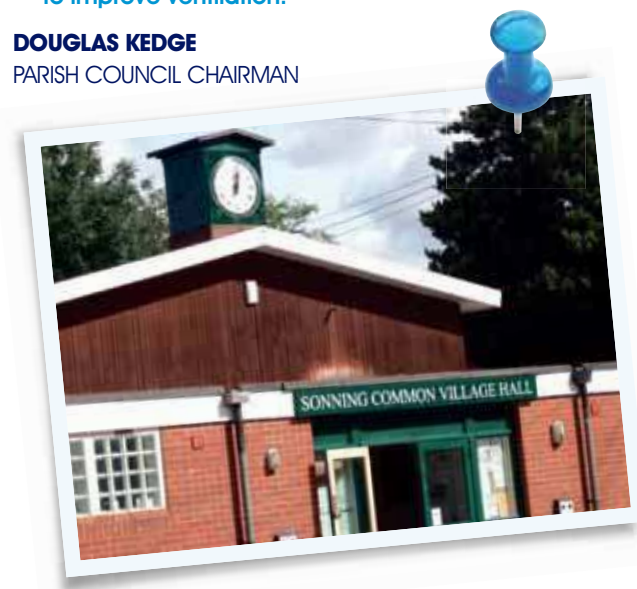
9 am. and 10.30 am

Parish Council update

- n Mrs Samantha MacGowan has been co-opted onto the Parish Council, from a strong field.
- n Following representations from the Parish Council, our County Councillor, Mrs Carol Viney, has authorised a number of 'kerb drops' in the village to help residents who use mobile scooters.
- n Preliminary negotiations are taking place with Rotherfield United Football Club for a skate park at the Bishopswood Sports Ground. This has now been approved by the Parish Council.
- n Steady progress is being made with site allocation and landscape assessment for the vitally important Neighbourhood Plan. There will be a major public consultation event all day on Saturday 28 April at the village hall – see Design Day information 10-4pm.
- n The council welcomes and supports the move by a group of residents to twin the village with a similar area in France.
- n The pavement salting undertaken by a group of volunteers was very successful, using equipment purchased by the council.
- n Six new notice boards are to be sited in the village, replacing dilapidated ones.
- n The council is working closely with allotment holders to improve the allotment area.
- n Two opening windows have been installed in the village hall to improve ventilation.

DOUGLAS KEDGE

PARISH COUNCIL CHAIRMAN



MEB'S Decorplus

Free Estimates

Maryella Brown

General Buildings Contractor

Decorating to Complete Home Improvements

Sonning Common

Tel: 0118 9721442 or Mobile: 07920 092875

Email: mebs.decorplus@btopenworld.com

Website: www.mebsdecorplus.co.uk



Call My Driver

Friendly & Reliable

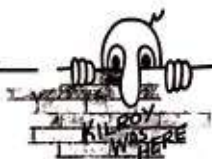
Taxi Service

Based in Sonning Common

07796 688477

DK Builders

Daren Kilroy



BRICKLAYING, EXTENSIONS,
GARDEN WALLS, PATIOS ETC



OVER 20 YEARS EXPERIENCE

CAVERSHAM, READING 07951736745
0118 3759407

Property Consultants

Shops, Offices, Industrial, Investments
Valuations, Rent Reviews, Lease Renewals

Highmoor Cross

George Chilvers and Nigel Price FRICS

0118 947 4600

www.highmoorcross.co.uk

Time 4 Pilates



Want to look and feel great!!
Try Pilates – controlled, yet gentle exercise

Classes in Sonning Common area
Including Ante and Post Natal

Mondays / Tuesdays / Thursdays
Beginners and Intermediates
Max 12 in Group (6 in Pregnancy classes)
Private sessions also available

Christine Brook – Member of Body Control Pilates® Association
Ring 07789 717017 or email chris@time4pilates.co.uk
Website at www.time4pilates.co.uk

CURTAINS,
BLINDS, PELMETS,
TIE BACKS ETC.

ALL AT COMPETITIVE
PRICES

CALL CAROLINE ON
0118 954 2448

OR
0781 561 0007

AUSTIN HARRIS

V.H.S.

T.V. & VIDEO
RENTAL

RADIO & T.V.
SALES / SERVICES

REPAIRS TO
DOMESTIC APPLIANCES

KIDMORE END 0118 972 3098





A remarkable man who lived in our village

While delving around in the Oxfam book shop in Reading, I found a copy of "Snows of Yesteryear" by Ewald Osers. You may remember his obituary in the last edition of the magazine. If anyone would like to borrow the autobiography of this most modest and clever man they are very welcome. n

CHRISSIE PHILLIPS-TILBURY
phillipstilbury@gmail.com



Sadly litter spoils the green spaces around our village

Recently, on one of my walks around the Sonning/Peppard Common area I came across some sad sights in Reades Lane, coming from Gallowstree Common towards Sonning Village.

I saw so much litter on the grass verges, mostly I believe, thrown there from passing vehicles. I cannot imagine it was any walkers like myself. Many aluminium, alcohol and soft drink cans, plastic bottles and bags, with assorted plastic bags/papers and similar debris.

Is there any merit in erecting some posters or signs, seeking the co-operation of those responsible for the disposal of such rubbish? Or would it be a waste of time and energy? n

TONY MCSTRAVICK



Praise for the work of our new Parish Council

I think it is great that the Sonning Common Parish Council is keeping us so well informed. The flyer that came with the February magazine was a good reminder to us all of all the much needed improvements that have been made since the election last May.

I was sceptical at first (some of us older ones do not like change) but the present team of Councillors are getting things done. They work together well and give us so much of their time and effort. They really deserve our praise and full support for a job well done.

Community spirit is back in our village at last and long may it continue. n

VALERIE BORSBERRY

First the bad news ...

Jo Keys of 'Occasions' has retired. Jo has been successfully providing the village with greetings cards, gifts, balloons, haberdashery and small items of stationery for the past thirteen years. Now the time has come for Jo to have a well earned rest. She will be sorely missed by the village, as many a person has been saved an expensive trip into Reading for that small but essential gift or card.

Jo is sorry not to have been able to say good bye to all her loyal customers personally but would like to say thank you to everyone for their wonderful support over the years.

Now for the good news: 'Occasions' will continue in exactly the same format under the ownership of Mr and Mrs Stiles took over on 24 January 2012. They will be continuing with the same services of Dry Cleaning, shoe repairs and alterations as well as keeping similar stock. n

Beware of charity bags posted through the door

It seems that hardly a week goes past without my receiving a plastic bag through my letter box exhorting me to help various worthy causes.

These bags arrive despite the fact that I have a notice on my door refusing all junk mail and I do see these uninvited appeals as junk.

Many people believe that they are helping a good cause by bagging up their cast offs and that all the money received by the sale of their goods will go directly to the named cause.

In fact, only a tiny percentage goes to the charity and can be as little as a couple of pence in the pound.

It would be far more effective to donate to the local charity shop, here in our village or to many of the charity shops in Henley or Reading.

In that way the bulk of the money, after the shop rent has been paid, goes in full to the charity that the donor wishes to support. n

CHRISSIE PHILLIPS-TILBURY

GREENSHOOTS

Family Fun Day!
Saturday 19th May
10 a.m. to 4.30 p.m.

Visit your local
charity Garden Nursery
Greenshoots
Manor Farm
Rotherfield Peppard
Henley-on-Thames
RG9 5LA

Attractions.....

- 'Canine Capers' a fun Dog Show - all entries welcome!
- Summer bedding plants, perennials and herbs on sale
- Charity Raffle - generously donated prizes
- Superb Craft Stalls
- Locally made preserves & jams
- Bouncy Castle
- Face Painting
- Cream Teas & Homemade Cakes
- Fresh eggs from own flock

and lots more.....

For more details Visit : www.waysandmeans.org.uk or
Email: mail@waysandmeans.org.uk

THE WAYS & MEANS TRUST Registered Charity: 255074

See you there!

Greenshoots Nursery on our door step

The charity provides training education and work experience to assist adults with learning and physical disabilities or who are recovering from poor mental health.

The nursery is open Monday to Friday and will be open Saturdays 5 May to 9 June 2012 from 10 - 4pm selling floral baskets, bedding plants and peat free compost.

The nursery is entirely dependent on charity and it does not receive any funding from government departments. The money it makes at the Open Day on 19 May is crucially important as it is one of its most important fund raising occasions.

The Open Day is a fun day for all the family. The Canine Capers Dog show, supported by the Vet centre in Henley attracted 40 entries last year and dog owners can just come along, no need to book! There are various categories of entry and there will be a Best in the Show championship at the end of the afternoon.

A deserving charity that needs YOUR support!

What is the Sonning Common society? It's as relevant today as it was 50 years ago...

In the early 1960s Sonning Common, a small village of 1000 people was declared an area for development. The lack of local consultation caused much confusion and indignation.

Society formed

The Sonning Common Society was founded by a group of concerned villagers among whom, was our late President, Sibella Bonham Carter. The society represented Sonning Common at several enquiries and agitated successfully for improvements in the village such as street lighting and roads.

New developments

The Society is concerned with the location and design of new buildings intended by the SODC Core strategy and will contest the proposed number. Our aim is to sustain a balanced community with those features that attract people to live here.

Achievements

Purchase of Old Copse and Kennylands Field, now the Millennium Green, work in liaison with Millennium Green Trust, Green Gym, Village Magazine, Parish Council and the Village Gardeners.

Sonning Common Guide

The directory of local groups and societies produced by the society- is available with our Sonning Common postcard in the Library, Occasions, Newsagents and Pet shop. Two Newsletters are issued each year, Spring and Autumn Meetings are held with illustrated talks and discussions OPEN TO ALLCOMERS.

Walks

Walks, two or three times a year (3 miles or less) are arranged. A register of trees in the village, memorial, historic, unusual trees is being compiled - information please.

Volunteers

To deliver newsletters, collect subscriptions, make coffee at meetings, join the committee and MORE members are needed right now.



Please fill in and return it to Mrs.J. Pitson, 9 Carling Road, RG4 9TG, with your subscription £3 per family £2 for a single member.

I/We wish to become a member(s) of The Sonning Common Society:

Name(s):

Address:

Subscription enclosed:

Tel.No

If you are willing to help in any capacity please tick here:

☐

Beville

ESTATE AGENCY

Providing a complete property service

Residential & Probate Valuations

Development & Planning Advice

New Homes Financial Advice

*Personal and professional service with
in depth local knowledge*

Contact us for a free valuation

0118 924 25 26

Email: info@beville.co.uk

28 Peppard Road, Sonning Common,
South Oxfordshire RG4 9SU

www.beville.co.uk

John Abbey Painter & Decorator



0118 924 2552

**58 Wood Lane
Sonning Common**



ADVERTISING OPPORTUNITIES

For advertising opportunities please
contact John Pearman on
0118 972 2381 / 07794 291776 or email:
advertising@sonningcommonmagazine.org

Do you know someone that needs care?

Our Sonning Common team offers specialist Live-in Care, enabling those who wish to remain within the comfort of their own home the opportunity to do so.

Living one-to-one support our Live-in Carers are able to balance independent living with bespoke care needs by assisting with:

- personal care
- companionship
- housekeeping

Find out how we can help you, please call
0808 180 1023 or visit www.helpinghands.co.uk



Helping Hands
Established since 1989

Shaun Guard TV AERIAL SERVICES

- **Poor Reception Solved** - Aerials repaired & supplied
- **TVs** - Hung on your wall for you. Also supplied & tuned
- **Extra TV Points** - For aerial and Sky (In HD!)
- **Sky TV** - Also Foreign Language TV

Call Henley-on Thames 01491 699114

A part of  **OXFORD AERIALS**

Jefferies Consultancy Services Ltd.
Accountancy Services



**An Accountant That Will Save You Time
& Paper Work**

Specialising in South Oxfordshire and Reading

- Self-Assessments
- Business Advice
- Corporation Tax Returns
- Accounts
- Payroll
- VAT

Excellent customer service & free initial consultation

Call Keith Jefferies on 0118 9722611 or 07749 415264

Email: Keith.Jefferies@jcslimited.co.uk

www.jcslimited.co.uk



INTRODUCING ANOUSKA HAWKES

Just for Kids

Hello and welcome to the new 'Just for Kids' feature that contains your reviews, news, pictures and challenges to see how well you know our village. I'd love to hear what you've been up to – maybe you've been on an exciting holiday, got a new pet or passed an exam. I know the children of Sonning Common are a busy lot, leading exciting lives, so tell us all about it here!

Please get involved and send your contributions to me at junior_editor@sonningcommonmagazine.org

I look forward to hearing from you. n

ANOUSKA
Junior Editor



The Secret Village

So, just how well do you know Sonning Common? Each edition we'll publish a close-up photograph of somewhere in the village and you have to guess where it is. All will be revealed in the next edition...

Do you know where this is?



What's Your Favourite Book?

I love reading so I asked some friends in my class (Y5) for recommendations. Here they are.....

GABE LANGFORD: *Harry Potter and the Chamber of Secrets* by J.K.Rowling

This is the most amazing book in the world. I've been reading it with my mum and it's so good she won't let my Dad read any to me!

LAUREN THORNTON: *The amazing story of Adolphus Tips* by Michael Morpurgo

I have read lots of books by this author and they are all brilliant. This story, told through Lily's diary, catches the readers attention from beginning to end.

KATIE FORT: *Dear Hound* by Jill Murphy

I was inspired by this story because if someone loves you enough, they will never let you go. It's about a boy called Charlie and his dog. Luckily there's a happy ending!

Next time its going to be: Milly Woods on *Matilda* by Roald Dahl and maybe *You! Have you read any good books? Make sure you email me and tell me all about it; next time, your recommendation could be here!* n

'Thumbs up' for Club SC

I asked two local boys, Luke and William Mullin – twins aged 11, who regularly use the local youth club about their thoughts on ClubSC. They are in Year 6 at Kidmore End Primary School. They told me:

Likes ...

"We get to see loads of friends and make new ones, the table tennis, pool and football tournaments, staff are friendly and not bossy like teachers, good music playing, you can chill out in the CHILL OUT ZONE, and they sell loads of sweets at the tuck shop"

Make it better ...

"Maybe a youth club disco, organise more team sports like basketball or rounders, evenings out in the summer, dart board, skate park, more SC kids and extra help as it gets very busy!"

Their mum, Heather, said

"As a parent I would like to add how fortunate we are to even have a youth club especially in the current economic climate. Lesley and her volunteers do a sterling job and would benefit greatly from some local helpers to improve their activity programme even more."

Really good suggestion? How about a 6 x weekly rota of Mum's/Dad's (the

youngsters who attend ClubSC do not want to see their parent at the club every week, occasionally might be ok?) to help in the tuck shop or ...

Contact Youth Club Leader Lesley Mather at clubsc@hotmail.co.uk n

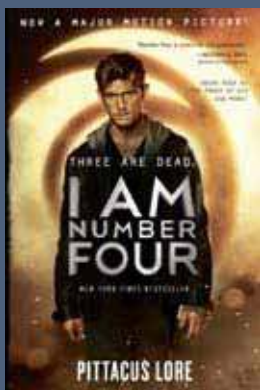
CHRISTINE ATKINSON



JUNIOR BOOK REVIEW

I AM NUMBER FOUR

by Pittacus Lore
(suitable for ages 11+)



Review written by the Mouldy Cheese Reading Group (Becky Houghton, Tilly Lawson, Izzy Lusted, Oliver Matthews and Fred Newbold), year 6, Sonning Common Primary School.

The story is about a group who escaped from the planet Lorien when it was being destroyed by the Mogadorians. Now 9 of them are being hunted down in numerical order: 3 are dead and number 4 knows he's next.

BECKY SAYS: It's an amazing book and I'd happily read it another 6 times!

TILLY SAYS: I loved the end because no. 4 had to make a heart-breaking decision.

IZZY SAYS: I really enjoyed the book – it was so gripping I couldn't put it down.

OLIVER SAYS: I loved the book because there was lots of action and the descriptions were vivid.

FRED SAYS: The book was excellent because of the graphic action scenes.

Pittacus Lore is Lorien's ruling Elder. He has been on Earth for the last twelve years, preparing for the war that will decide Earth's fate. His whereabouts are unknown.

The second book in the series, called 'The power of six' is available from the library, and the third book (called 'The rise of nine') is due out this summer. n

CARPET FITTER

Fitted Carpets & Vinyl Specialist

Underlays & Fixings Supplied

Re-Adaptions & Restretches

Measuring, Estimating & Planning

Carpets Vinyl Amtico Kamdean

25 YEARS EXPERIENCE

MICHAEL HODGSON

TEL: 0118 901 1777 / MOB: 07841 586003

THAMES VALLEY GYMNASTICS CLUB

Bird Wood Court
Peppard Road
Sonning Common

(Registered Charity No. 1062939)



- ◆ Modern Gymnastics facility with "state of the art" equipment and dance studio
- ◆ Elite/Competitive squad coaching to Regional/National levels
- ◆ General Gymnastics classes for Boys/Girls – all ages/abilities
- ◆ Pre-School programmes
- ◆ Ballet Classes
- ◆ Play Gym for the Under 5s (Tuesday & Thursday a.m.)
- ◆ Gym Birthday Parties
- ◆ Room for hire

For further information, please call in or telephone
Kevin Cassidy, Club Manager, on 0118 972 4401



Dean & Milward

Insurance brokers & financial advisers
3 Market Place Mews Henley-on-Thames
Tel: 01491 578259 Fax: 01491 410597

Motor Insurance

It really is worthwhile asking us for a quote

Instant
COVER



Professional
SERVICE



Save
MONEY



Computer Problems?

Free quote, no fix no fee, no call out charge

Over 200 happy customers in
Sonning Common.

Milo and Michael Harper



0118 972 4905

Milo Technical Support
22 Sedgewell Road

bespoke kitchens

We have moved to our new
larger improved showroom at:

Wyevale Hare Hatch
Garden Centre
Bath Road
Hare Hatch
Twyford
Berkshire RG10 9SW

Telephone: 0118 940 6600

Fax: 0118 940 6622

Email:
henley@optiplankitchens.co.uk

Website:
www.optiplankitchens.co.uk

OPENING HOURS

Monday – Saturday
9:00am – 5:00pm

Sundays & Bank Holidays
by appointment only

- 13 Full displays
contemporary and traditional
- Displays featuring
Granite, Caesarstone, Solid
Wood and Laminate Worktops
- De Dietrich Appliance centre
- Bosch Appliance centre

OPTIPLAN

The South's Premier Kitchen Manufacturer



- Manufacturer and Retailer – No Middle Men!
- Bring in your own Measurements for an
on-the-spot Quote
- Project Managed Installation Service
- 20 Year Guarantee on Furniture

- Quality Kitchens from £3,000 to £30,000
- Kitchens Handmade to Any Size or Colour
Granite and Corian Worktop Specialists
- Factory Visits Welcome

Over 17,000 satisfied customers in this area

established 1984



- Fully qualified (Part P reg) electrician
- Plumbing • Kitchens and bathrooms
- Landscaping and fencing

0118 947 7738

07717 295679

www.eastonpropertycare.co.uk



£10.00 OFF
your next MoT on production of this voucher





MasterFit Servicing
from a dealer established for over 50 years!

SERVICE PRICE MATCH

Price guarantee, we'll match ANY price quoted locally like for like.

SERVICE FROM ONLY

£109
including Parts, Labour & VAT

MOT'S **£35**
with ANY MasterFit Service

Sonning Common Vauxhall
Peppard Road, Sonning Common, Reading

0118 972 2021
www.sonningcommonvauxhall.com

Opening Hours: Mon-Fri 8am - 6pm • Sat 8.30am - 12.30pm • Sun CLOSED

SHARP BUILDING SERVICES

The local builder for all your building work:

**EXTENSIONS
ALTERATIONS
REPAIRS
TILING**

**Phone Steve on:
07887 986446 / 01189 724880**

Sonning Common Pet Care

At Home Pet Care

when you are on holiday or at work

Cats

Daily visits to clean, feed and pamper

Small Pets

Home visits to care for your Rabbits, Guinea Pigs, Hamsters, etc

Dog Walking

Regular or occasional walks

Puppy Visits

To feed, play, toilet break and clean up

Please call Alison for further information

Tel 0118 9722948 / 07787 114536



AWARD WINNING CARING HOMES FOR OLDER PEOPLE

CARING HOMES 



ABBEYCREST CARE HOME

Sonning Common, Reading RG4 9RG

Abbeycrest is a stunning new care home from the Caring Homes family. Located in the tranquil village of Sonning Common, in the heart of the Chilterns, Abbeycrest provides exceptional residential, nursing, and dementia care for elderly ladies and gentlemen. The home offers a delightful living environment that promotes independence, assists orientation and provides light, bright, homely accommodation.

- New Development With Established Care Team
- 24h Nursing Coverage
- Individual Tailored Plan
- Permanent & Respite
- Garden Rooms
- En Suite Bedrooms
- Restaurant Standard Cuisine
- Specialist Care Design Features
- Abbeycrest Living Events & Activities
- Hospitality & Wellbeing Services



Freephone 0808 137 1479



www.caringhomes.org



April

May

MONDAY 2 FISH - Garden Centre Visit 1.30pm	WEDNESDAY 4 20 Notts Choir practice Village Hall 3 - 5pm	MONDAY 9 Sonning Common Society - Easter Walk Village Hall 10.00am	TUESDAY 10 Chiltern Edge Horticultural Society - Talk by John Paulding on Begonias. Refreshments & plant stall Peppard War Memorial Hall 7.30pm - 9pm
FRIDAY 13 Nottakwire practice Village Hall 9.45 - 11.30am	FRIDAY 13 British Legion - Tea dance Village Hall 2 - 4pm	SUNDAY 15 Peppard Bowls Club - Open Afternoon Peppard Memorial Hall Green 2pm	MONDAY 16 Sonning Common Parish Council Village Hall 8pm
THURSDAY 19 FISH - Pub lunch 11.30am	THURSDAY 19 Sonning Common Women's Institute - Basket Weaving with Christine Brewster. Visitors welcome Village Hall 7.30pm	THURSDAY 19 Sonning Common Society - Bee Keeping by Steve Moll Sonning Common Library 7.30pm	FRIDAY 20 Nottakwire tea party group practice Village Hall 10am - 12pm
FRIDAY 20 20 Notts Choir practice Village Hall 3 - 5pm	FRIDAY 27 Nottakwire practice Village Hall: 9.45 - 11.30am British Legion - Tea dance Village Hall: 2 - 4pm	SATURDAY 28 Design Day Village Hall 10am - 4.30pm	WEDNESDAY 2 20 Notts Choir practice Village Hall 1 - 3pm
FRIDAY 4 Nottakwire practice Village Hall 9.45 - 11.30am	MONDAY 7 FISH - Garden Centre Visit 1.30pm	MONDAY 7 Sonning Common Society - Spring Walk Village Hall 10.00am	THURSDAY 10 Abbeycrest group practice Village Hall 11.30am - 1.30pm
FRIDAY 11 20 Notts Choir practice Village Hall 10am - 12pm	FRIDAY 11 British Legion - Tea dance Village Hall 2 - 4pm	THURSDAY 17 FISH - Pub lunch 11.30am	THURSDAY 17 Sonning Common Women's Institute - Resolutions followed by a Bingo Drive Village Hall 7.30pm
FRIDAY 18 Nottakwire practice Village Hall 9.45 - 11.30am	MONDAY 21 Sonning Common Parish Council Village Hall 8pm	FRIDAY 25 Nottakwire tea party group practice Village Hall: 10am - 12pm 20 Notts Choir practice Village Hall: 10am - 12pm	SATURDAY 26 Sonning Common Primary School Summer Fair Olympic / Jubilee 12 - 3pm



Stone Developments

For All Your Building Requirements

- extensions, refurbs
- conservatories
- roofing, guttering
- soffits, fascias
- new kitchens, new bathrooms
- painting, decorating
- wall & floor tiling
- wood & laminate flooring
- garden maintenance, fencing, sheds, decking etc

Contact: James Stone
Tel: 0797 1536804
Email: jamesstone1967@hotmail.co.uk
The Reformation, Horsepond Road,
Gallowtree Common, RG4 9BP

**Free
Estimates**

Fed Up With Call Centres

Barrs Insurance

Mark & Helen Richards
Your Local Insurance Brokers
For The Unusual & The Usual
Let Us Take Care Of Your Insurance

- House & Contents • Business • Liabilities
- Travel • Landlords • Professional Indemnity
- Horse • Shops • Sickness / Accident
- Commercial / Unusual Vehicle

If It's Not listed We Still Can Help
All Types Of Insurance Enquiries Welcome

0118 924 2603

mail: info@barrs-insurances.co.uk
www.barrs-insurance.co.uk

Unit 2, Kidby's Yard, Kennylands Road, Sonning Common RG4 9JT

HENLEY GLAZING AND WINDOW CENTRE LIMITED

Incorporating



01491 629901

Glass Supply, Glazing Service,
Mirrors, Shelves, Tabletops,
Sealed Units, Lead Lights,
Locks, Secondary Glazing,
Shower Screens



FENSA
Registered Company



0118 9419210

Suppliers and Installers of:

UPVC, Aluminium and
Timber Windows
Doors and Conservatories
Fascias, Soffits and Guttering

Workshop: Unit 12, Manor Farm, Peppard Common, Henley-on-Thames RG9 5LA
Fax: 01491 629904 Email: henleyglazingwindow@yahoo.co.uk

TANDOORI

Connoisseur

*Come & Experience authentic
Tandoori & Bengali Cuisine*

21 Wood Lane
Sonning Common
0118 972 3104 / 972 1054

- ★ Fully Air-Conditioned
- ★ Large Groups Catered For
- ★ Open 7 Days a Week

TAKE-AWAY MENU

We Guarantee Prompt Service on All Orders

S J HINTON Carpenter & Joiner

All carpentry work undertaken
MDF built-in furniture a speciality
Quality craftsmanship

Telephone Steve on: 0118 972 3602
Mobile: 07887 653866

Sonning Common Beauty

12 Newfield Road Telephone 0118 972 3059

www.sonningcommonbeauty.co.uk

- MANICURE • PEDICURE • ORGANIC FACIALS
- MD FORMULATIONS GLYCOLIC PEELS
- WAXING • LASH AND BROW TREATMENTS
- SPRAY TANNING • MAKE-UP • MASSAGE
- BRIDAL HOLIDAY AND MUM-TO-BE PACKAGES AVAILABLE

Gift Vouchers Available

Some reduced price treatments available each
week please ring to check availability

EDS School of Motoring

0118 972 3349 / 0794 057 9018

edsschoolofmotoring@yahoo.co.uk



Creating
good safe
drivers
for life



noble intentions
landscape garden design

Professional
advice, design &
planting for your
garden.

Call Gail Noble
on 0118 972 3214
www.noble-intentions.com



Brambles

Weddings Funerals
Hand-Tied Gift Bouquets

National & International Deliveries
Fully Qualified Florist Free Local Delivery

42 Wood Lane • Sonning Common • RG4 9SL
0118 972 1240 0777 179 0916

We turn feelings into flowers

Why use a walking service? When they could stay and play at

Doggy Day Care

Dedicated day care staff
Fully experienced
Fully insured
Walks and play
Socialising with people and dogs
Individual sleeping quarters
Local pick up and drop off available
Open 8am-6pm Monday to Friday

Extra treatments can include:

Swimming/Hydrotherapy*
Grooming*
Physiotherapy*

Compare the prices!
5 hours of FUN day care is around the
same price as a one hour walk!

Doggy Dips

0118 972 4849

Unit 1 Kidby's Yard • 28 Kennylands Road • Sonning Common • Reading • RG4 9JT
doggydips.co.uk

* Charged separately, terms apply