

SC SONNING COMMON MAGAZINE

IN THIS ISSUE



GCSE RESULTS

Triumph in the face
of adversity
P7



IN THE URBAN JUNGLE

Learn how to grow
your bananas
P15



THE SECRETS BEHIND JM

At the forefront
of innovation
P18



OCT / NOV 2017

CARPET FITTER

Fitted Carpets & Vinyl Specialist
Underlays & Fixings Supplied
Re-Adaptions & Restretches
Measuring, Estimating & Planning
Carpets ★ Vinyl ★ Ceramic Tiles

25 YEARS EXPERIENCE

MICHAEL HODGSON

TEL: 0118 901 1777 / MOB: 07841 586003

Caversham Aerial Services

TV Aerials Supplied and Fitted.
Poor Reception? Old aerials?
Can't get the new digital channels?

Give us a call - We can help!

Phone 0118 9673596

www.caversham-aerials.co.uk



wood lane dentistry



Vikram Chugani BDS MFDS RCSEd MSc

Jessica Lee BDS MFDS RCS

Claudia Wellmann BDS MFDS RCSEd MSc MRD

Dipesh Kothari BDS MFDS RCSEd

- Your local family friendly practice
- Routine general dentistry
- Affordable dental plans with Denplan
- Children seen on the NHS
- Tooth whitening
- Cosmetic dentistry and implants
- Invisible braces
- Sedation for nervous patients
- Free parking

Now taking on new patients
Saturday and evening appointments available

**Happy Healthy
Smiles...**



Wood Lane Sonning Common Reading
Berkshire RG4 9SJ Telephone 0118 9722626
www.woodlanedentistry.co.uk

Thinking of moving?

For a free valuation or to enquire about
one of the properties in our varied portfolio
please contact Richard Beville

Beville
ESTATE AGENCY

info@beville.co.uk
www.beville.co.uk
+44 (0)118 924 25 26
28 Peppard Road
Sonning Common
South Oxon RG4 9SU



elements;
KITCHEN DESIGN

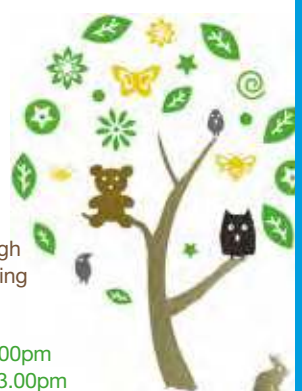
Visit our stunning showroom:
8b Portman Road, Reading RG30 1EA
Tel 0118 959 9919
www.elementskitchens.co.uk

SONNING COMMON PRE-SCHOOL

GROVE ROAD
SONNING COMMON
0118 972 4760

We are a happy friendly pre-school
welcoming children from 2 years
6 months, to come and learn through
play. We have a purpose built building
& extensive play garden.

Morning sessions are 9.00am - 12.00pm
Afternoon sessions are 12.00pm - 3.00pm
After School Club sessions are 3.00pm - 6.00pm



FROM THE EDITORIAL TEAM

As the 'season of mists and mellow fruitfulness approaches' life returns to normal, schools are open again, people are back at work after holidays and the weather which usually brightens up at this point is still unfortunately unsettled. Not that we should grumble, imagine what on earth must the people of the hurricane/earthquake have found when they returned to their homes. Unimaginable devastation.

A significant meeting took place in the 6 September when the SODC planning committee met. The Gladman application for 245 homes near Emmer Green was rejected as was the 30 homes on SON 5. Johnson Matthey opened their doors to local people as part of their 200th anniversary celebrations. Having attended I have tried to give a flavour of the work of this fascinating scientific/technological company. Mick Stanyer has shared more photos of his stunning garden along with advice on growing bananas.

Three of our residents have told their stories and challenges to raise money for various charities. Another tells of her love of language and another book is reviewed. All the favourites appear in this edition as well as the good news about the school SATs and GCSE results.

I hope you enjoy reading this magazine and keep sending in your fascinating articles. ●

Diana

Diana Pearman Editor

Email: editor@sonningcommonmagazine.org



HIGHLIGHTS

- 4-7 Community News
- 10-11 Noticeboard
- 13 Interview with - Mark Weston
- 18-19 In Focus - Johnson Matthey
- 21 Craft Page
- 24-25 The Edge
- 28 Tom Fort/Cook's Corner
- 32 Church News
- 34 Diary Dates / Advertisers Directory

Design & Artwork: Kevin Taplin

tensevennine.com

kevin@tensevennine.com

07887902376 / 0118 957 6929

Print: Rick Peedell

Xplor Ltd

rick@xplor-pm.co.uk

07766 254422 / 0118 9471955

Cover image:

SON 5 Protest courtesy of The Henley Standard

While every effort is made to ensure the accuracy of information printed in this magazine, the editor and the publisher cannot accept any responsibility for the consequences of errors that occur.

SC SONNING COMMON
MAGAZINE

MEET THE TEAM ...



Christine Atkinson



Hannah Rice



Jo Stoves



Joan Grummant



Ros Varnes

USEFUL CONTACTS:

Chairman: Geoff Adams

1 Woodlands Road, Sonning Common RG4 9TD
chairman@sonningcommonmagazine.org
Tel 0118 972 2134

Diary dates: Helen Barker

helen.barker75@outlook.com Tel 0118 972 1241

Distribution: Helen Gavin

distribution@sonningcommonmagazine.org
Tel 0118 972 4680

Advertising: John Pearman

advertising@sonningcommonmagazine.org
Tel 0118 972 2381

CLUB SC YOUTH CLUB IS 6 YEARS OLD THIS MONTH

Club SC has been a Community Youth Club for 6 years. We formed in August 2011 when the County Council withdrew funding from all rural youth clubs and maintained only 7 hubs in large Oxfordshire towns and Oxford City.

Georgie Bird, who was Leader until recently, went to university in September. She was great fun and well respected and the young people will miss her.

The Management Committee have decided to take the opportunity to revitalise the youth club by employing two equal Leaders, (instead of a youth leader and a youth support worker) to take the club forward into the future. With the village growing, we will need to provide a safe and secure place for our youngsters to relax and meet with their friends.

The numbers coming into the club in the past few weeks have been nothing short of astonishing. We regularly have 45 young people coming in each week and recently it has been over 60. It has taken the combined efforts of the staff member and 5 or 6 volunteers (some of them from the Management Committee) to ensure they are well supervised and safe. Indeed, our Management Committee, also made up of volunteers, have been magnificent.

With the news that Chiltern Edge School has been saved we have the support of the new Headteacher Moira Green, who clearly understands the importance of maintaining a safe place for children to relax. We have a new representative from Sonning Common Parish Council, Mika Rinta-Suksi, who lives on the Peppard/Sonning Common boundary and has a

young family. He is very keen to make the village a safe place for youngsters. Indeed, the club owes its very existence to Sonning Common Parish Council, without whose continued support we cannot function.

We are putting together a programme of activities and events for the Autumn and Winter and have some exciting things coming. In January, we have a film make-up artist who is currently working on the TV programme 'Casualty' who will come in and demonstrate her skills. Not to be missed. ●

Carol Viney

[Twitter.com/club_sc](https://twitter.com/club_sc)

<http://www.clubsc.co.uk>

https://m.facebook.com/sonningcommonyouthcentre/?locale2=en_GB

BISHOPSWOOD PUPILS ATTEND THE FIRST RIVERTIME ACCESSIBLE REGATTA

Last term was all about fun! One of the highlights was attending the Bisham Abbey Regatta where we saw Princess Anne, went bell boating, played football, went on a bike around a course and learnt how to do yoga and use pom poms like cheerleaders. (Bishopswood teacher)

Three classes from Bishopswood school in Sonning Common took part in this amazing event.

Bisham Abbey National Sports Centre hosted the first ever Rivertime Accessible Regatta in the Thames Valley, bringing together over 300 young people with a wide range of disabilities and special needs for a unique day of sporting events.

HRH The Princess Royal attended to officially launch the Regatta, which was organised by the Rivertime Boat Trust together with the charity Give Them a

Sporting Chance, of which Her Royal Highness is Guardian.

The event saw the stretch of the River Thames at Bisham Abbey brought to life through a full programme of water sports, including bell boating, accessible sailing and powerboating, kayaking and stand-up paddle boarding.

As well as water-based activities, young people also had the opportunity to try various land-based activities using the National Sports Centre's world-class facilities, including a range of land based accessible sports such as wheelchair basketball and tennis, boccia, cycling, new age kurling, cheerleading, archery, land sailing and disability football.

Drawn from over 20 local schools, participants also had the chance to rub shoulders with some inspiring Paralympians and Olympians who attended the Regatta to show their support for accessible sport. ●



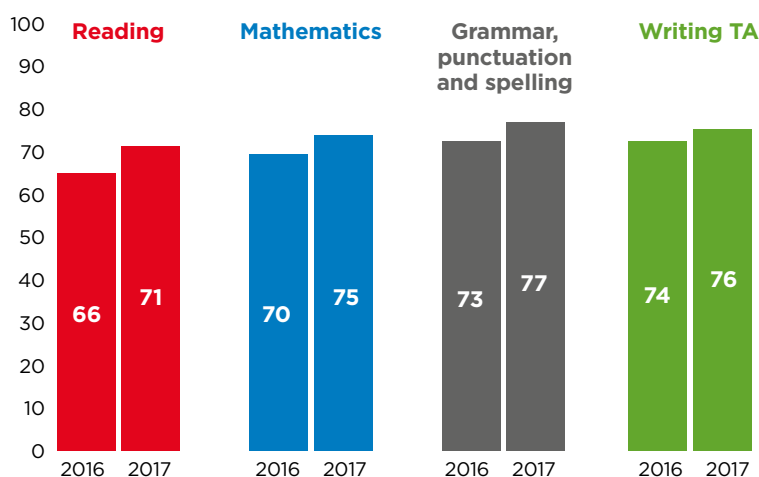
END OF KEY STAGE 2 SAT RESULTS



The Key Stage 2 (KS2) test results are the second year of the new format. Sonning Common Primary School (SCPS) year 6 children have been working hard through the year towards these tests, and their results are as follows:

Reading	74%
Maths	80%
Spelling & Grammar	78%
Writing	83%

The graph below shows the national results from 2016 and 2017. As you can see SCPS pupils have come out above the average and are very pleased with themselves.



Headteacher Chris Hirst was equally pleased. "Our results once again are well above both local and national averages and I am both pleased and proud of the achievements of our pupils. The results show what a dedicated and hardworking team Sonning Common Primary School has, and what we can achieve by all working together." ●

Christine Atkinson

TRIUMPH IN THE FACE OF ADVERSITY...

Despite having their preparation for their GCSE exams disturbed by a damaging Ofsted report, and a consultation to close the school hanging over them, the outgoing Year 11 class of 2017 have done themselves and the school proud with their fabulous exam results. The students were put under pressure with the staff and parents rightly in a state of concern over the future of the school, but they continued to work hard and believe in themselves, and produced a much better than expected set of grades.

In English 11% of the cohort gained a Grade 9 with 78% of student gaining a pass. This is fabulous news and a significant improvement on last year's results, as, according to the press, the 9 grade was awarded to only 3.2% in English literature and 2.2% in English language. The 9 grade is set at a higher mark than the previous A* grade.

In mathematics 70% of students gained a pass.

Below are some of the significant individual student successes:

Edward Beal:

1 x 9, 1 x 7, 2 x A*, 4 x A, 1 x B, 1 x C

FJ De Guzman:

1 x 8, 1 x 6, 1 x A*, 5 x A

Anna Kallos:

1 x 9, 1 x 8, 4 x A*, 3 x A

Isobel Lusted:

2 x 8, 1 x 7, 1 x A*, 5 x A

Koolanna Momoh:

1 x 9, 1 x 8, 1 x 7, 3 x A*, 3 x A

Bianca Solipa:

1 x 9, 1 x 8, 1 x 7, 2 x A*, 5 x A

The Head teacher Moira Green said

"These results are a testament to the hard work and dedication of both staff and students. Chiltern Edge has been through a difficult time recently. Looking forward to the new academic year we have the foundations to move rapidly back to Good and to resume our status as the school of choice for our community and a place of educational excellence. We wish the students all the very best in their chosen path for the future" ●

Christine Atkinson

SHOES, SHOES, SHOES...

by Christine Atkinson

There are 300 million children in the world for whom walking with shoes is a rarity. This makes them extremely vulnerable to infection by parasites, such as hookworm; while injuries to the feet and ankles can lead to ulcers and other conditions which are almost always left untreated. Without shoes, many children are not permitted to attend school.

Sal's Shoes was set up by Sal's mum to try and provide second hand shoes to some of these children.

In their first year, the charity collected 4,805 pairs of shoes and distributed them in 8 countries, including in the UK. In 2015, the third year they collected 81,598 pairs of shoes and distributed them in 26 countries.

Sonning Common Primary School Parent Teachers Association (SCPS PTA) wanted

to help the charity and so, on the last day of term, invited all the children to bring in their old shoes to donate to this cause.

There were so many that they managed to spell out SCPS and a big heart on the school playground.

Wendy Perry – chair of the PTA – said “We expected that there were many school shoes, trainers and other casual shoes, which are unlikely to be used again because feet grow over the summer or are a little scuffed so will be replaced in time for the new school year. We were so pleased to report that, due to the generosity of the children and their parents, over 350 pairs of shoes will be given to other families to use in the UK and abroad” ●

More information about the charity can be found here <http://www.salsshoes.com/>



REMEMBERING LINDA ... A SPECIAL LADY

Many people in Sonning Common will have good reasons for remembering Linda Webb who sadly passed away peacefully on August 2nd. She was a well-known figure in the village and was known for the energy and commitment she gave to numerous good causes, and also for the great warmth and kindness she showed to so many people. Her strength of will and good humour stood out, and she always found time to listen to others. She was extremely proud of the community spirit shown in the village, and was a truly great example of how extending a welcoming hand of friendship and support, makes Sonning Common a very special place to live in.

Linda was a woman of many interests and was tireless in raising money for Macmillan Cancer. She made many friends through the work she did at Waitrose, Sonning Common Post Office and as a lollipop lady. When she retired she continued her community work with the Village Gardeners, including time spent encouraging the children at Sonning Common Primary School with gardening projects. She was also directly involved with getting Reading FC to extend the match day bus service to Sonning Common. She was a huge supporter of the local side and could often be seen wearing their colours and going off to matches.

Linda will be sadly missed by her family and all of her many friends. ●

Joan Grummant



GREEN GYM

Next year it will be 20 years since Dr. William Bird a former GP in Sonning Common Health Centre came up with the idea of promoting and improving health and fitness through working in groups tackling conservation projects just using hand tools. The Sonning Common Green Gym was the first such group and now the scheme has spread throughout the country with over 100 set up in conjunction with TCV The Conservation Volunteers.

We enjoy fellowship and learn new skills, while helping to improve or maintain our local environment. It has been quoted that almost a third more calories can be burnt on some Green Gym sessions than in an equivalent aerobics session. Why not come and join us – it would be great to see you

See the website for our programme www.sonningcommon.tcv.org.uk or phone our secretary on 0118 972 3528

BRIAN GARDENER

HEALTH WALKS

There have been items in the news recently about middle-aged people who don't even walk briskly for 10 minutes per month, increasing their risk of cancer, heart disease and other major killers. If this sounds like you, why don't you try a health walk? We always welcome new walkers and with such beautiful countryside around us, walking is a really pleasurable way of keeping fit and making new friends.

Our new programme of free daily walks began in September, and if you've never been on a health walk, autumn is the ideal time of year to try one: not too hot, and hopefully not too wet! We aim to have 2 trained leaders (volunteers) on every walk, one to lead the way, and the other to bring up the rear to ensure no one gets lost. There are different grades and lengths of walk, to suit all people – just choose one from the current timetable, which is available from the library, the Health Centre and the Herb Farm, or on the website at www.sonningcommonhealthwalks.co.uk/timetable. Or if you'd like to talk to someone about the health walks, phone Colin Davies on (0118) 972 2527 ●

Rosemary Dunstan

CELEBRATING LIBRARIES

October will be a busy month for the Friends of Sonning Common Library. The group are organising a number of events to celebrate National Libraries Week from 9 -14 October, including a Quiz on Friday 6th in the village hall. Tickets are £20 per team (a maximum of six people).

On Tuesday 10 October, there'll be a talk by two local authors in the Library on the trials and tribulations of being a professional writer. Does anybody still write with an old fashioned pen? Can anyone match Anthony Trollope's prodigious output of three thousand words a day and is writer's block painful? Come along and find out.

Tickets for the events went on sale at the Library and Occasions on September 1st ... some may still be left. Doors for both will open at 7pm for 7.30 start. At the end of the same week – Saturday 14 October – the winners of the short story competition will be announced in the Library. Prizes in three age groups will be awarded thanks to the generosity of Bewley Homes, Sonning Common Vauxhall and Peppard Building Supplies. The FoSCL annual general meeting will be held on Thursday 23 November in the Library at 7pm. If you're a Friend or a

volunteer you can find out what books have been bought with the money we've raised over the last 12 months. If you're not a member then join us anyway and sign up to support this valuable village facility. Any enquiries about FoSCL can be sent to: friendsofsonningcommonlibrary@gmail.com

LIBRARY NEWS

The 'Animal Agents' Summer Reading Challenge generated a lot of interest in reading over the summer holidays, but don't let the interest wane with the start of the new school year – keep reading, and keep visiting your local library! If you can't get to the library for any reason, give us a call and we'll find a volunteer to either bring books to you, or help you get to the library. There are lots of things you can do online via our website: research your family history, read current magazines, or download ebooks and e-audio books. Go to www.oxfordshire.gov.uk/libraries to investigate. You just need your library barcode and PIN to access what's on offer.

HEATED DEBATE ON THE FUTURE OF SON 5

It was better than an episode of Eastenders...

First, councillors tried to approve an application to build 30 new houses on SON 5, off the Kennylands Road, but too few would support it.

Then, they tried to put forward a motion to refuse the controversial application, which was contrary to our Neighbourhood Plan, but planning officers attempted to dissuade them.

Then, there was talk of adjourning the decision until a subsequent meeting of South Oxfordshire District Council's Planning Committee. But councillors did not vote for an adjournment.

Finally, councillors voted, six to three, to refuse building firm T A Fisher's planning application – much to the delight of the 100 or so residents who attended the meeting on 6 September at Didcot Civic Hall to protest about the plans for 30 new homes on SON 5 (Kennylands Paddock) and 245 on land near the water tower on the edge of Emmer Green.

It remains to be seen whether T A Fisher and Gladman will appeal against the district council's refusal of planning permission for their ambitious proposals, which would have far-reaching consequences for the village.

But, if they do, the parish council will campaign vigorously to contain development on SON 5 to 22 new dwellings – as our Neighbourhood Plan stipulates – and to keep Sonning Common separate from Reading. ●

A SAD SIGHT FOR SONNING COMMON

Many people watched the demolition of the Nat West bank. Maxine Grange was there and sent this email. "Mr Stephen McCabe bought the bank in October 2015 at auction in London. He didn't know the area of Sonning Common but now likes it so much he would like to move here one day from London. Although I'm not in the building business I try to help and support Steve my partner of 2 years. It's lovely talking to the local people who stop at the bank and chat. We had many people watch it go, quite sad for some. I visit the site about 3 times a week, to see the progress and many of the local friendly people stop to talk to me. I found Sonning Common a lovely place. The 6 luxury apartments will probably be ready in March 2018."





Moores Painting, Decorating & General Maintenance Services

Spruce up your Home & Garden!
5% Discount when you quote: SCMAG

*Interior/Exterior Painting, Glossing, Staining. *Wall Paper Removal/Hanging. *Damaged Walls/Woodwork Repair.
*Repair & Maintenance of Internal/External Fixtures & Fittings.
*Fences/Sheds Erection & Repair. *Fence, Shed, Decking – Cleaning, Staining, Painting. *Garden Clearance/Maintenance

We invite you to contact us for a free, no obligation quotation.

Call: 01189 722002 or 07595 906940
Email: info@moorespds.co.uk Web: www.moorespds.co.uk



Beacon Flooring
A Family Run Business

Carpet Wood Karndean Vinyl

Free fitting on carpet orders over £150

16 High Street, Goring. 01491 454095
beaconflooring@aol.co.uk
www.beaconflooring.co.uk

Studio One



Pilates Matwork
Group Reformer
BarreConcept
Ballet Barre
Yoga

Studio One, Hayden Farm, Nuffield,
info@studioone.uk.com, www.studioone.uk.com

PEPPARD
BUILDING SUPPLIES

FIRST CHOICE FOR THE PROFESSIONAL



FREE LOCAL DELIVERY

- Competitive Trade Pricing
- Bulk Bags
- Specialist Insulation Stockists
- Indian Sandstone
- Bricks/Blocks /Aggregates
- Trade Shop
- Plenty of Parking
- Web Offers!

Call **0118 972 2028** / Sat Nav **RG4 8XA**
Visit www.peppardbuildingsupplies.com

*Terms and Conditions apply



Curious to know how much your property is worth?
Visit our website for a free instant online valuation.

PROPERTY VALUE



Davis Tate offer a free instant online valuation of your home.

Visit our website to find out how much your property could be worth.

www.davistate.com/instant-valuation

Or if you prefer a face-to-face valuation, contact Davis Tate Sonning Common to arrange a free valuation of your property.
Tel: 0118 972 4242 or email sonningc@davistate.com

If you have instructed another agent on a sole agency and/or sole selling rights basis, the terms of those instructions must be considered to avoid a possible liability to pay two commissions. However asking us to visit is FREE.
For T&Cs please visit our website www.davistate.com



Robin James OPTICIANS



- Comprehensive eye examinations
- Full contact lens service
- Free specs for children
- Extensive range of designer frames
- Main agent for Zeiss and Rodenstock lenses
- Free parking

0118 947 2099

www.robinjames.co.uk

44 Church St, Caversham, Reading (opposite Waitrose)

Book-Keeping & Payroll Services

for the Small Business & the Self-employed

Call Val Ogilvie for Competitive Rates

01491 681235 or 07768 732439

val.ogilvie878@gmail.com

E. H. HAMLEY & SON

Builders & Decorators

Tel: (0118) 9573894

Mob: 0774 392 9649

Email: ehhamleyandson@gmail.com

Property repairs a speciality

14 Sheridan Avenue Caversham Reading RG4 7QD



ESTABLISHED OVER 100 YEARS

"We turn feelings into flowers"



42 Wood Lane • Sonning Common • RG4 9SL

0118 972 1240 0777 179 0916

www.brambles-sonning-common.co.uk

Kidbys Sheds Simply The Best

28 Kennylands Road – Sonning Common – Reading

A Shed Should Be For Life

Sizes from 4ft x 3ft Up to 30ft x 20ft

Bespoke doors and window arrangements with building colour choices. Fully Insulated Home Offices

www.kidbys.co.uk

Contact Michael Loades or Peter Kay

Tel: **0118 972 3380**

Email: sales@kidbys.co.uk

Red Kite Electrical



Top quality electrical work for Sonning Common and the South Chilterns since 2006. All sizes and types of work undertaken.

sparks@redkiteelectrical.co.uk

www.redkiteelectrical.co.uk

0118 907 1834

0788 273 7402

10 Onslow Gardens, Caversham



Time 4 Pilates



Want to look and feel great!!
Try Pilates – controlled, yet gentle exercise

Classes in Sonning Common area
Including Ante and Post Natal

Mondays / Tuesdays / Thursdays
Beginners and Intermediates
Max 12 in Group (6 in Pregnancy classes)
Private sessions also available

Christine Brook – Member of Body Control Pilates® Association
Ring 07789 717017 or email chris@time4pilates.co.uk
Website at www.time4pilates.co.uk

Adams Cars

Your Local Taxi Service

Taxis - Chauffeurs - Minibuses - Executive Cars

Rail & Airport Services / Parties / Weddings

Theatres / Hospitals / Sporting Events

0118 966 4000

Office: Manor Farm, Peppard Common, RG9 5LA

www.adams-cars.com

info@adams-cars.com

A very big thank you

I should like to thank everyone in the village who helped to make our wedding such a happy event. I was completely overwhelmed by the tremendous outpouring of love and affection shown to me by FISH, Nottakwire, Village Gardeners and other societies including Reading and District Horticultural society, Chiltern Edge Horticultural society the South West Coast Path Association and All Saints Church, Peppard.

I have lived in the village for 49 years and have always tried to give something back to the community, where I have happily lived for so long. We arrived at Peppard Church on a beautiful sunny, summers day on Bernard's vintage tractor and trailer; with so many people waiting they couldn't all get into the church!

Thank you all so much.
Barbara Winnington
 (previously Barbara Butler)



Macmillan Coffee Morning
 Sonning Common Village Hall
 Sunday 15 October
 10.00-12 Noon
 Assorted Sales Tables and Raffle
 For Further Information Contact
 June Fisher 972 1398

SONNING COMMON AND DISTRICT TENNIS CLUB

Want to give tennis a try? Brush up on your strokes? Enjoy a family activity at a low cost? We have 2 excellent courts situated at Bishopswood Playing Fields, for the use of the local community. An annual fee of £10 junior, £20 single adult, £30 family membership with no pre booking required and use as often as you like.

Email info@sonningcommontennisclub.org for more information on joining.

ANTIQUES VALUATION

CHRIST THE KING HALL
WEDNESDAY 25 OCTOBER 10 - 12 NOON

Professional Antiques Valuer Simon Jones
 Jones and Jacobs Auction House,
 Watlington
 will value your precious items for £3 per item
 Refreshments available and a sale table to browse

Profits to St John's Kidmore End and
 Christ the King, Sedgewell Road
 Sonning Common
 Further information
Sue Nickson 972 4520



Chiltern Players present

'Tis the Season to be Jolly Murder Mystery Supper

Nick Pippard invites you to join the festivities at our Christmas party to celebrate the

**50th anniversary of
 Pippard's Garden Emporium**

But the season is not
 as jolly as it seems!

Tickets in advance only
£15: includes 3 course meal

Bar & hot drinks available

**£5 of each ticket is donated
 to the Ehlers Danlos charity**



Saturday 2 December 7.15 for 7.45 pm
at Peppard Memorial Hall, Peppard Common, RG9 5JA

Phone 0118 972 2632 or see our website for details www.chilternplayers.co.uk

Snack & Chat

An invitation from St Michael's Church
A simple lunch - a bowl of soup?

Everyone invited to come for a chat
It is free and is not part of a religious service.
Place: St Michael's Church hall (situated behind the church on the Peppard Road next to the petrol station).

Date: 17 October and 21 November.
Time: The hall doors open at noon and lunch served at 12.30pm.

Do you need help with your laptop, tablet or phone?

We hold Gadget Sessions at Sonning Common Library every Thursday morning from 10.00-11.30.

Drop in - but it is best to book first so that one of our friendly volunteers is ready to help you.

Phone on **01189722448**.
Anyone welcome.



Romero - heartbeat of El Salvador

Rise Theatre, a group of young professional actors, to perform their new play

At St Michael's

7.30pm

Wednesday 22 November

The true story of Archbishop Oscar Romero who was assassinated while at the altar because he chose to challenge those in power and stand up for the poor people of El Salvador.

Romero said: "Aspire not to have more, but to be more."

Tickets £10 can be bought by phoning the parish office or online at www.ticketsource.co.uk/risetheatre.

Suitable for adults and children 11+.

Our library is more than about books Come and see for yourself

Rhymetimes 1st and 3rd Mondays at 10am

Gadget sessions Thursdays from 10am-11.30am

Scrabble Club Fridays from 10am-12 noon

Storytimes Saturdays from 10am

National Libraries Week with a week's worth of special activities: a quiz night, a special storytime and craft session, talks about 'A writer's life' from 2 local authors, and the results of the Children's short story competition.

Rosemary Dunstan, library manager Library phone: 0118 972 2448

Nottakwire presents "A Christmas Cornucopia".

Featuring the Nottakwire & Notts Singers
with three young, local, guest performers.
Sonning Common Village Hall.

Saturday 9 December 2017
2pm.

Doors open at 1.30pm
Tickets: Adults £10. 12 and under £5.

Seasonal Refreshments included.
Tickets available from Occasions,
Wood Lane from 20th November.

VILLAGE COFFEE MORNINGS

Sonning Common Village Hall

WEDNESDAY 4TH OCTOBER

AND
WEDNESDAY 1ST NOVEMBER
10.30 - 12.00 noon

ALL WELCOME - PLEASE JOIN
US FOR A CUP OF COFFEE/TEA
AND BISCUIT
(donation welcome)

MEET FRIENDS, MAKE NEW ONES!
WE WOULD LOVE TO SEE YOU!

PLUS SALES TABLES & TOMBOLA
(profits shared with local community projects)

BOOKSTALL
HAND CRAFTED CRAFT ITEMS
COSTUME GREETINGS CARDS
BARGAIN JEWELLERY
TOMBOLA PRIZES!!

GREENSHOOTS selling
PRODUCE, JAMS AND CHUTNEYS

Hosted by Sonning Common Women's Institute.
Contact: Sue Hedges, Secretary, 0118 9723678

UNDENIABLY PODIATRY

EXPERT HELP AND FOOT CARE FOR:

- Corns and calluses ● Cracked Heels ● Toenail problems ● Verrucae ● Foot pain (including heel and ball of the foot pain) ● Foot infections
- Bunions ● Hammer toes ● Orthotics
- **Clearanail™** treatment for fungal toenails
- Nail surgery for ingrowing toenails

Highly Qualified HCPC (Health and Care Professions Council) Registered Podiatrist (Chiropodist)

For Appointments Tel 0118 9572102

Fawley Surgery

12 Coley Avenue

Reading RG1 6LQ

www.undeniably-podiatry.co.uk



The COLLEGE
of PODIATRY

Chiltern Beauty

Outstanding Natural Beauty

- * Waxing
- * Massage
- * Electrolysis
- * Eyelash Tinting
- * Eyebrow Shaping
- * Jessica Manicures
- * Jessica Pedicures
- * Makeup
- * Aromatherapy Facials

Janet Copp I.H.B.C

9 Sedgefield Close, Sonning Common
RG4 9TS

Tel: 0118 972 3157

Mobile: 07706 182 813

www.chilternbeauty.co.uk

Family Hairdressing any age & any style

*.....and all in the comfort of your
own home.....*

Ring Maureen on

0118 972 1074

Fed up with limescale?

*A Water Softener
would be your solution*

Compass Water Softeners

SALT, SALES, SERVICE, INSTALLATION

0118 972 3773 0118 941 0869 0796 700 9838

www.compasswatersofteners.co.uk

Email: martin@compasswatersofteners.co.uk

Sonning Common Pet Care

At Home Pet Care

when you are on holiday or at work

Cats

Daily visits to clean, feed and pamper

Small Pets

Home visits to care for your Rabbits,
Guinea Pigs, Hamsters etc

Dog Walking

Regular or occasional walks

Puppy Visits

To feed, play, toilet break and clean up

Please call Alison for further information

Tel 0118 9722948 / 07787 114536

BONNER LOCKSMITHS

INSURANCE APPROVED

**DOORS & WINDOW LOCKS SUPPLIED & FITTED,
CHANGED OR UPGRADED (BS3621)**

**DOMESTIC & COMMERCIAL PREMISES
DIGITAL LOCKS • BARS**

FREE NO OBLIGATION QUOTE

ALL AREAS COVERED

01491 680216



CRESTWELL HOUSE

CALL OUT SERVICE

FULL MEMBER
OF BRITISH
LOCKSMITH
INSTITUTE

Beech Lane, RG8 0PX • Woodcote Nr. Reading
PROPRIETOR: S. J. BONNER

MARK WESTON NO WAITING FOR OUR GREEN MAN!

By ROS VARNES

He's not hard to spot, dressed head-to-toe in high vis green clothing. The village's street cleaner, Mark Weston, loves his job because so many residents take time to show him their appreciation.

Mark has been working for Sonning Common Parish Council since July 2016 - picking up rubbish, sweeping the streets, emptying bins and generally keeping an eye on what's going on.

He took over the role when the parish council's long-term street cleaner, Tony Parisi, retired. Mark also cleans the Rotherfield Peppard parish.

Said Mark: "I love my job because it makes me feel important and needed. I am forever having people stop me and say what a great job I am doing. And for someone who has not worked for many years that has boosted my confidence enormously.

"Quite a selection of the younger generation who I see, particularly at the skatepark, say, 'Thank you very much for keeping our park clean'. That means a lot to me.

"It is not the most glamorous job in the world but someone has to do it. Luckily, my favourite colour is green!"

Six years ago Mark was diagnosed with epilepsy which prevented him from working. He said: "I was very bored at home and I felt that life was passing me by, so I decided to go back to work.

I have never felt better. I walk about six miles a day and I have lost three stone in weight!

"However, there is a downside to my job. Some residents persist in putting their personal household waste in public bins around the village, which means we have to keep on emptying the bins and order extra rubbish collections from the district council, which costs extra money. I work for around 30 hours a week and at least one-third my time is spent emptying household rubbish from public bins," said Mark.

Mark grew up in the Sonning Common and Henley area, attending Sonning Common Primary School and later Gillotts School.

He said: "I had my first proper job at the age of 10, helping with boat hires on the Thames, in Henley, for Hobbs and Son. At 17 I joined Presto Print, in Henley, as an apprentice and qualified in six months. It normally takes three years.

"I was regarded as the best darts player in the Henley district for 20 years and I used to play for Berkshire county. At the age of 20 I was ranked number four in Great Britain. I also enjoy playing pool."

There's a definite pub theme going on here, which might have something to do with the fact that Mark was a pub manager for two years - first of The Three Tuns, in Henley, and then of a pub in Wokingham.

He returned to the area from Wokingham in 2011 to help look after his sick mother and currently lives in Peppard. His eldest son, Marcus, 16, has just left school and is taking on an apprenticeship with Mercedes Benz, in Bracknell, while his youngest son, David, nine, is at Badgemore School in Henley.

Mark is concerned about improving life for young people locally and would like to set up a Youth Forum, aimed at generating more activities for them to do. Said Mark: "I would like to talk to the schools, the youth club, the police, the council - and most importantly, teenagers and their parents - to see if we can come up with some ideas for new activities." ●

For more information on the Youth Forum contact Mark:

Weston.mark1975@gmail.com



FUNDRAISERS

"A simple act of kindness made me realise it's time to start giving and helping others".

LOCAL GUY DOMINIC RENSHAW CLIMBING MT EVEREST FOR THAMES VALLEY AIR AMBULANCE.

Even as a very young boy I had a fascination with things that are a little different, finding challenges to push me to my limits - not just physically and mentally but also personally.

Climbing Mt Everest is a lifelong dream and in April 2018 I'll be setting off to Nepal to start the 2-month long expedition. Keep an eye out for me locally as I'm out training most evenings or mornings, I'm easy to spot quite a short guy with a large rucksack.

A friend of mine did something

extraordinary that made me realise that life is about giving and helping others. I was at a BNI networking meeting when Steve stood up and presented Thames Valley Air Ambulance with £300 which he had won on their charity horse racing event the night before. Now, most people would have found a personal use for this money, but not Steve. In front of a stunned audience he quietly handed the money over and words cannot describe how such a small but generous gesture had the biggest impact on myself.

Why help?

Achieving this dream will also allow me to raise as much money as possible for Thames Valley Air Ambulance, who deliver critical medical care to save lives across the Thames Valley. I hope you can donate what you can to support this

extremely worthy cause.

Follow me on Facebook: ID **dominic.renshaw.1**

Go to justgiving.com and type in 'Dominic Everest' and it will pop straight up.

I have opportunities for local companies, just drop me an email if you're interested to hear more: **info@ad-extra.com** ●

Happy climbing

DOMINIC RENSHAW



A MUSCLE WASTING DISEASE FOR WHICH THERE IS NO CURE

In August 2017, I ran 5k for the newly formed Cori's Disease Trust, (www.gsdfundraising.com) For many this is no more than a Saturday walk in the park, yet for me it was an immense feat. I have never run before and I began training on my 60th birthday.

I was feeling slightly smug but my efforts were as nothing compared to the people competing with me. One man affected by Cori's rode an electric bike and strapped an energy drink to his back from which he drank, at a constant rate, to help him complete his challenge.

Cori's or glycogen storage disease IIIa is a rare genetic disease that begins in infancy with difficulties in maintaining blood sugar. Adulthood sees further complications affecting the liver and heart, eventually severe muscle weakness develops. There is no cure and the only advice that can be given is to keep fit and to eat a good diet.

I am involved as a close family member is affected. I am saddened as I watch those with the disease, move from childhood to adulthood and deteriorate with no prospect of improvement.

If you want to donate please go to my just giving page. A google search with the words, just giving donate ailsa arthur, should work.

Please look out for the lottery tickets to help support Cori's disease – ON SALE SOON. ●

Ailsa Arthur

HELP TANYA TREKS OMAN ... MAKE A DIFFERENCE

I live in Sonning Common with my fiancé and three year old daughter. We are regular readers of your magazine.

I was diagnosed with breast cancer as a young person a couple of years ago at the age of 33 and have had chemotherapy, radiation etc.

I am taking on the Fabulous Challenge to Oman to raise funds for CoppaFeel!

Between the 4th and 10th November I will be trekking along the ancient footpaths of the Oman Mountains for a truly off the beaten track challenge! I will be joined by a group of others who are also fundraising including Olympic Long Jump Gold Medallist, Greg Rutherford and Author Giovanna Fletcher.

CoppaFeel is a breast cancer awareness charity whose mission is to spread awareness of the signs and symptoms of breast cancer across the country.

Here is a link to my fundraising page... <https://omancoppafeel.everydayhero.com/uk/tanya-treks-oman>

I would be very grateful to raise some sponsorship and awareness of the charity CoppaFeel from this article. ●

Tanya

URBAN JUNGLE

Mick Stanyer again shares photos of his exotic garden and a few tips if you would wish to take on the challenge.

So, you've decided to grow an exotic garden with some bananas plants then, should be relatively easy, a south facing garden preferably, plenty of sun, water and feed. How difficult can it be.

Well there are no bananas whose foliage like frost, so some remedial measures need to be taken. With the onset of winter and the potential for frost you will need to be on standby to give these plants some protection. Watch or listen to the weather forecast daily, if the "f" word (frost) is mentioned in your area you will

at a moment's notice need to spring into action. You will have already purchased the pre-requisites, tall canes or poles, chicken mesh, horticultural fleece and several bales of straw, and maybe a head torch. Here's what you do:

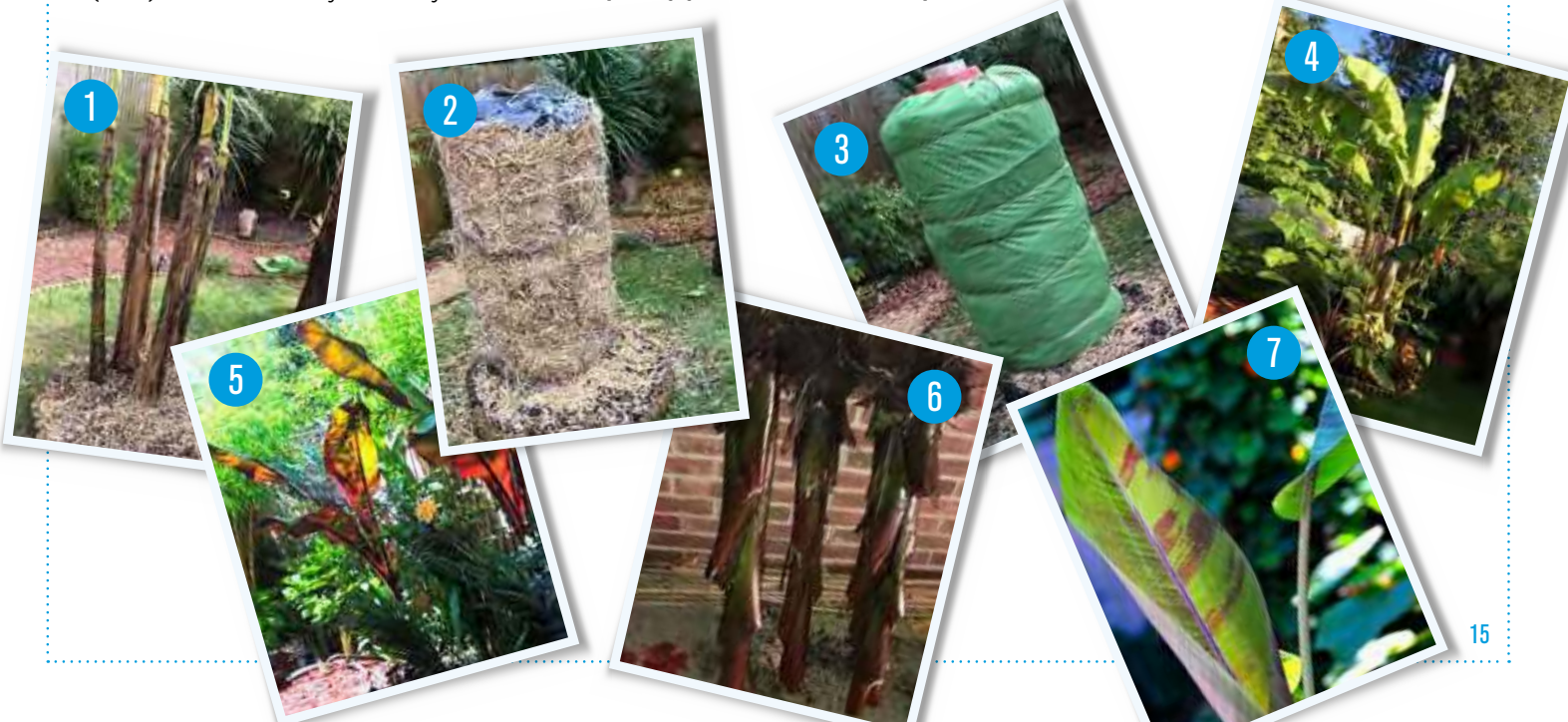
- **As hard as this may be chop off all the leaves (pic 1)**
- **Make chicken wire frames around the trunks**
- **Give the roots a good mulch to last the winter and spring**
- **Pack straw around the trunks (pic 2)**
- **Put a water proof hat on (the straw construction that is, though you may need one yourself)**
- **Wrap the chicken mesh frame with horticultural fleece (pic 3)**
- **Keep your fingers crossed**
- **Hopefully you will be rewarded (pic 4)**

Some bananas are not suitable to be left outside overwinter even with protection, Ensete Maurelii (pic 5) being one such variety, just mentioning the "f" word near it can cause it to die. In this case, there is nothing for it, dig it up, turn it upside down to drain water out (pic 6) and store it somewhere frost free and dry, in my case this means not being able to open the front door until late spring.

A newcomer to the garden this year is Musa Sikkimensis, with its stunning foliage it makes a great addition to the garden (pic 7)

A little bit of effort is required to create an exotic effect in your garden but the results are very much worth it. ●

More photos will appear in the next issue



**CURTAINS,
BLINDS, PELMETS,
TIE BACKS ETC.**

**ALL AT COMPETITIVE
PRICES**

**CALL CAROLINE ON
0118 954 2448
OR
0781 561 0007**



Kennylands Gymnastics
(formerly Thames Valley
Gymnastics Club) offer
a range of classes for
boys and girls of all
ages. Classes cater
for preschool, recreation,
freestyle gymnastics as well
as competitive gymnastics for those who
express the talent and desire. Parties are
also available on weekends and we even
provide an opportunity for adults who wish to
have a go themselves.


Contact us: Kennylands Gymnastics
Bird Wood Court, Sonning Common, Oxon, RG4 9RF
T: 0118 9724 401 / 07846 185 905
E: kennylandsgymnastics@hotmail.com



www.kennylandsgymnastics.com

**WE UNDERTAKE ALL TYPES
OF BUILDING WORK**

- ✚ **BUILDING EXTENSIONS**
- ✚ **BUILDING RENOVATION**
- ✚ **BUILDING ALTERATION**
- ✚ **GAS AND CENTRAL HEATING**
- ✚ **LOFT CONVERSIONS**
- ✚ **PLUMBING**
- ✚ **BOILER INSTALLATION**
- ✚ **SERVICE AND REPAIR**



BOILER SERVICE, REPAIR & INSTALLATIONS
AMAXS
PLUMBING HEATING ELECTRICAL
WWW.AMAXS.CO.UK
www.facebook.com/AMAXS

**Tel: 01189 724 794 Mob: 0784 068 1057
E: info@amaxes.co.uk**



**HEIGHTS
TREE CARE**

- All Aspects of Tree Surgery
- Hedge Cutting
- Stump Grinding
- Private and Commercial

0118 9721003 07813 586735
info@heightstreecare.co.uk
www.heightstreecare.co.uk



City & Guilds Fully Qualified Professionals
£10 Million Public Liability Insurance

SPRUCE MAINTENANCE SERVICE

For all your property maintenance requirements:

- ◆Decorating - inside and out
- ◆Paper Hanging
- ◆Carpentry - including door easing & hanging
- ◆Wall & Floor Tiling & Silicone Renewal
- ◆Plumbing - leaking taps etc.
- ◆Patio's, Landscaping & Garden Design
- ◆Hedge Cutting & Planting

Pass on your TO DO list

ROB SMITH Tel: 0118 972 4560

Graham Blake
soft furnishing

- Loose Covers
- Curtains
- Re-upholstery
- Carpets
- Conservatory Blinds
- Quilted Bedspreads
- Tracks & Poles
- Plantation Shutters

TEN YEAR GUARANTEE
For personal, helpful service, please telephone
01844 261 769
07802 213 381
www.grahamblake.com
Established Family Business

If you're considering selling, or are simply curious about the value of your property, contact Bridges for a free market appraisal

We continue to experience a high demand for all types of property in Sonning Common and surrounding villages. Situated within the heart of Caversham we have an extensive database brimming with prospective buyers searching for homes in your area.

For your convenience we're available for evening and weekend appointments, and look forward to hearing from you.



1 Church Road Caversham Reading RG4 7AA
Email post@bridgesproperty.co.uk

www.bridgesproperty.co.uk
0118 946 2121

FROM COUNTRY HOUSE TO INTERNATIONAL RESEARCH CENTRE

By **DIANA PEARMAN**



Just on the edge of Sonning Common is a company that has survived for 200 years, which is highly unusual. Johnson Matthey (JM) is one of those enduring businesses.

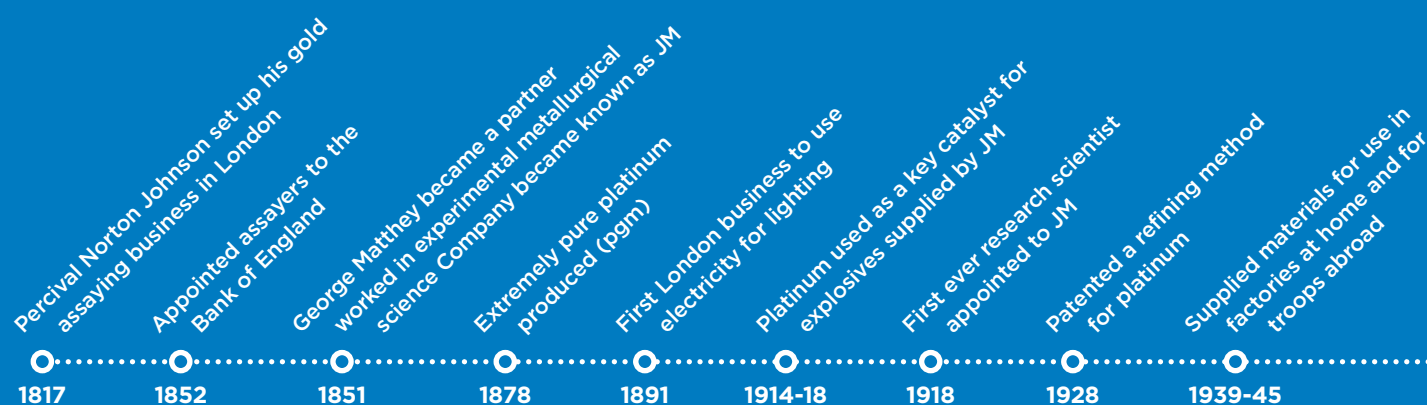
On our doorstep it may be, but how many residents can say or can even hazard a guess about what happens there?

An opportunity to find out what was provided on 22 July when local people were invited to tour their labs and hear about their work at the forefront of science and technological innovation. Small groups were given guided tours, following a brief introduction to the company's history.

There were four areas of demonstration in their amazing laboratories and the first was about chemistry and catalysis.

A breath of fresh air for people around the world

- JM's first ever emission control catalyst was produced in 1974 and tested against a non-catalyst car which produced 6 times more nitrogen oxide, 11 times more hydrocarbons and 35 times more carbon monoxide.
- In 2017 one in three new cars is fitted with an emission control catalyst from JM stopping around 20 million tonnes of pollutants
- Building on this expertise with catalysis has led to the development of battery technology, towards a faster acting battery charge and discharge model. This investment in research will lead to developing controls on bus and lorry emissions and potentially to more effective battery vehicles and electric cars.
- Recycling is a huge part of their work and Platinum group metals (pgms) are a precious metal and a valuable natural source. At JM they have developed advanced processes for extracting and separating pgms



from products. Here science meets medicine. Cochlear implants can provide deaf people with a sense of hearing and are made from high grade platinum

Testing lab to make things better

- Tackling food waste is the work of the scientist in the next lab of the tour. One of the ways they are using is to make food last longer and thereby cut down the waste. As food ripens it emits ethylene and so to prevent this happening too quickly, the researchers have developed a paper compound which absorbs ethylene and prevents the deterioration of fruit and vegetables
- In our shopping basket at the base of wrapped fruit there will be a rectangle of what looks like paper. This absorbs the ethylene and keeps the product fresh for longer.
- Keep your fruit and veg wrapped in the fridge and when the wrapping is thrown away it will be recycled for further use by JM scientists.
- Just one example of JM's testing lab work

State of the art equipment

- The third lab demonstrated an x-ray diffractometer which allows the study of the crystalline structure of catalysts under realistic operating conditions

- A scanning electron microscope helps to study the composition of the world's surface
- Some of this analytical power is used to support its health care business

Targeted drugs for more effective treatment

- In the 1990's the biomedical department was formed
- The drug Fosrenal was developed which improved the quality of life for patients with kidney failure. It controls the amount of phosphate in the blood which had led to cardiovascular and bone disease.
- JM supplied the platinum to aid research in the USA which resulted in the development of the anti-cancer drug Dispatin and later to the 2nd generation drug Carboplatin, which is used to treat ovarian cancer patients.

The world faces some unprecedented challenges. JM will help to meet them, driving innovation such as low and zero emission transport, highly efficient use of the planet's resources and life changing medications. These are daunting to many but are the fundamental aims of this company. ●

From country house to research premises

JM bought the site at Blount's Court in 1975, previously owned by Brooke Bond Tea Ltd. The history of Blount's Court dates back to 1287 and some 14 families and their descendants have lived in it since. In 1969 when Lady Peel died it was sold to an American Machine Foundry. This started the process of metamorphosis into a place of work and laboratories were added by each of the successive owners. JM added a further research block incorporating underground facilities and laboratories and a permanent passageway to link them all together.

Embracing change

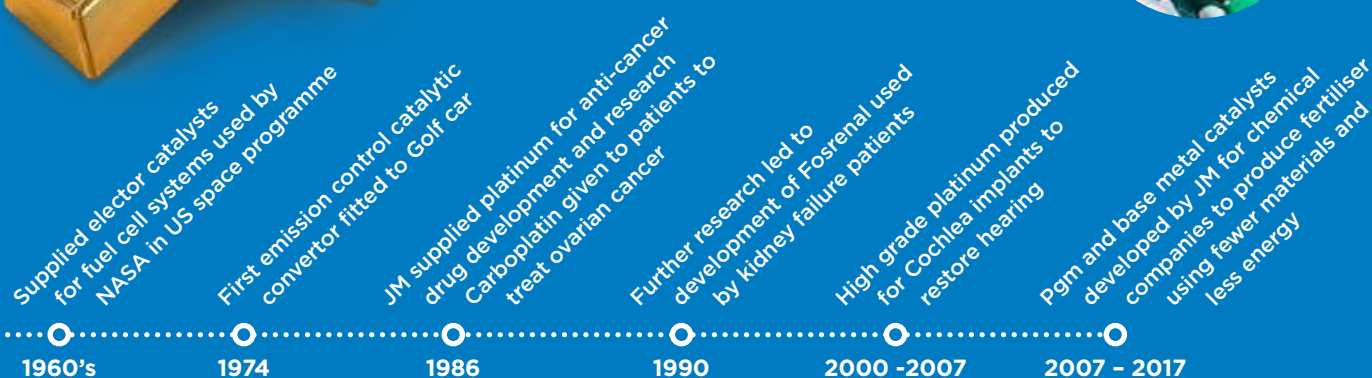
The 20th century heralded change, the motor car, electricity, telegraphy and JM wanted to be at the forefront of these innovations. One of the first ever research scientists was recruited in 1918, Alan Powell, who was not wholeheartedly welcomed as it was not understood why this pioneering appointment was required. Another example of JM's foresight had been during the war. Conscription meant there was a shortage of male employees and Nora Denny was the first female to be employed in a technological role. She remained at JM until she retired.

What of the future?

The world faces some unprecedented challenges. JM will help to meet them, driving innovation such as low and zero emission transport, highly efficient use of the planet's resources and life changing medications. JM will be championing sustainability, daunting to many but are the fundamental aims of this company.



FROM GOLD BAR TO TODAY'S MATERIAL.
JM MATERIAL IS THE SILVER 'COIN CELL'
UNDER THE COPPER CONTACT.



A Magazine First!



It was with some surprise that the magazine received an invitation from the Coppa Club head office in London to review their restaurant in Sonning.

Many readers will know that following refurbishment of the Great House in Sonning in 2015 'Coppa Club' became the in-house restaurant. You may well have eaten there yourselves.

Never one to refuse the offer of a free hospitality whilst acknowledging that the magazine had never ventured into the restaurant review territory before your Editor accompanied by the Advertising Manager sallied forth one warm June Wednesday evening to sample the delights of this venue.

First impressions were of an extremely popular venue. That evening was a very busy one with all seating areas well occupied and with a great variety of patrons, all ages, all dress styles and a loud 'buzz' of conversation. We were warmly greeted and allocated a table in the quieter inside area adjacent to the long bar. The light and airy conservatory area was obviously a favoured option on this sunny evening as was the large garden area with an ample supply of deckchairs, both with stunning views of the river.

The House Manager made himself known to us and commented that the weather had much influenced the bustle of activity, by comparison the previous evening, a rather grey one, had been much quieter. The main inside area with a variety of soft or hard seating has a modern rustic décor but with good spacing between tables. The restaurant provides an 'all day' menu serving as breakfast and lunch venue for Great House residents as well as casual visitors.

The menu is not extensive but with eight or nine starters or sharing plates plus similar number of mains as well as a range of salads, pizza and pasta dishes provided expectations of the food being freshly prepared. The accompanying wine/drinks list was also reasonably priced. The only disappointment being no separate 'specials' list – always the first choice of your Editor!

Our starters appeared very promptly as previously had a water jug and our pre-dinner drinks order.

We had chosen seared king prawns and crab and avocado as our starters and followed with sea trout and corn-fed chicken.

No doubt more professional and experienced restaurant reviewers would have spent much verbiage on itemising the various pros and cons of the dishes chosen. Not being in that league it suffices to say we both found the dishes chosen to be very acceptable, well presented and of a good standard for an upmarket 'gastro pub'.

A limited but tempting dessert menu provided a pleasant end to our dining experience.

Overall, we were impressed with this venue, the helpful and friendly staff and the quality of the food on offer. The only quibble being the slightly longer wait for our mains than anticipated – due no doubt to the demands made on the kitchen on a very busy evening.

A great atmosphere if you enjoy a lively and buzzy ambience and one we will happily experience again, even if we must pay for it next time. ●

JOHN PEARMAN

Reviews of the Village News consistently praise author

I was pleased to see my Review of Tom Fort's book in the Sonning Common Magazine this month. Re-reading what I had written made me think of searching the web for other reviews of The Village News which have been published. They are uniform in their praise and I patted myself on the back when I found that professional writers and reviewers had made similar points to me.

This month, Peppard Parish Magazine has my review of An artist's war by Phyllida Shaw. The war was the First World War. The artist was Morris Meredith Williams who designed five of the stained glass windows in All Saints' Church. He was the son of a Rector of Peppard (1890 – 1900). His most significant work, with his wife Alice, is in the Scottish National War Memorial in Edinburgh Castle. An artist's war is a superb book, both for the text and particularly for the 300+ illustrations - a work of art in itself. Rosemary Dunstan managed to have Oxfordshire Library acquire a copy. ●

KEITH ATKINSON



JACKIE'S CRAFT COLUMN

HALLOWEEN LANTERN

AVOID SHARP KNIVES AND PUMPKIN GUTS WITH THESE REUSABLE DECORATIVE LANTERNS FOR HALLOWEEN.

What you'll need:

- Halloween templates printed on white paper
- Clean glass jar with labels removed
- Tissue paper
- PVA glue
- Paintbrush
- Scissors
- Tea light

Instructions:

- 1) Use the internet to search for 'Halloween templates' and print off some images for your lantern design – black silhouettes work best. Alternatively design your own and colour with a black marker pen.
- 2) Take your clean glass jar and cover with a layer of PVA glue mixed with water. You can remove any labels by soaking the jar in warm water- a ruler is a handy tool to scrape off any paper or glue residue.
- 3) Cut or tear the tissue paper into small pieces and layer onto the jar. 2 layers should be enough.
- 4) Cover the outside of the jar with another layer of PVA glue.
- 5) Cut out your Halloween pictures and stick to the outside of the jar.
- 6) Cover the pictures with more PVA glue to seal them to the jar and allow to dry.
- 7) Light a tea light and place inside your candle holder to make it glow. Ask an adult for help or for a safer option use battery operated tea lights.

What you'll need:



Step 1



Step 2



Step 3 & 4



Step 5



Step 6



Step 7



Property Maintenance

Plumbing, Electrics, Decorating,
Woodwork, Roofing, Brickwork, Drains,
Kitchens and Bathrooms

All Exterior, Groundworks and Garden work
Property Management & Lettings

Please call Roger on 07752 759908

colbeckproperty@gmail.com

Computer repairs

Specialist in home-user & small business support:
Virus removal, slow computer, data backup,
data recovery, booting problems, hardware diagnosis

Over 10 years experience

0759 898 3292 jason@millwardit.co.uk

millwardit.co.uk

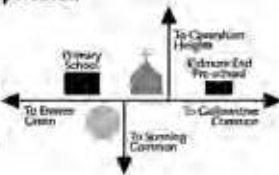


Set in an idyllic village location, our small, friendly pre-school creates a very special environment for children guided by a team of highly qualified, caring staff. Please contact us for details:
registrar@keps.co.uk

With excellent links to Kidmore End Primary School and only 5 minutes from Caversham, Sonning Common, Peppard and Emmer Green.



Kidmore End Pre-School, Parish Room
Wood Lane, Kidmore End, Reading RG4 9BB
Registered Charity Number 104 6030
www.KidmoreEndPreSchool.co.uk



Laurence Hansen Household and Property Services

- Carpentry, Plumbing & Tiling
- Painting & Decorating
- Concrete & Brickwork
- Fences, Sheds & Greenhouses
- Irrigation systems
- Projects & Repairs

07792 477784 info@thewoods.myzen.co.uk

Wood View, Reades Lane, Gallowstree Common

Whatever you want to store...

...for whatever reason - house sale and purchase not coinciding, travelling, house building work, paperwork overload or just "de-cluttering" to sell your house more quickly - we offer a friendly and flexible service at Shiplake.

With competitive rates, secure storage all on one level and hassle free 24/7 access, contact us now!

Only 10 minutes
drive from
Sonning Common
in Shiplake



01189 404163

www.barn-store.co.uk

PET COUNTRY SUPPLIES

We have been trading in the village for
over 50 years

WE ARE PROUD SPONSORS OF

- THE LOCAL FISH BUS
- DOGS FOR THE DISABLED
- BINFIELD HEATH DOG SHOW

We have old fashioned friendly Service

We can't stock everything but we can
get most things for your pet!

We deliver free on orders over £25.00

COME AND SEE US !!

43a Wood Lane

Sonning Common RG4 9SJ

0118 9723495

Email interestedin@petcountrysupplies.co.uk

www.petcountrysupplies.co.uk

Open.....Mon to Sat 9.am to 5.30pm (5pm Sat)
9am to 4pm Weds

Closed all day Sunday and Bank Hols

SAVE MONEY WITH



CHECK OUT
THE MONTHLY
OFFERS AT
OUR SHOP
OR
WEBSITE

Parish news

The content of this page is the sole responsibility of, and is paid for by, Sonning Common Parish Council

BETTER BROADBAND SUPER FAST

Most of the premises in the village now have access to superfast broadband, according to the Better Broadband for Oxfordshire programme.

A partnership between Oxfordshire County Council, BT and Broadband Delivery UK (BDUK) has already provided access to superfast broadband to over 90% of premises in Oxfordshire, and is aiming for 96% of homes and businesses by the end of 2018.

There is some additional work due for completion in Sonning Common by the end of this year and some additional work scheduled to finish by the end of 2018.

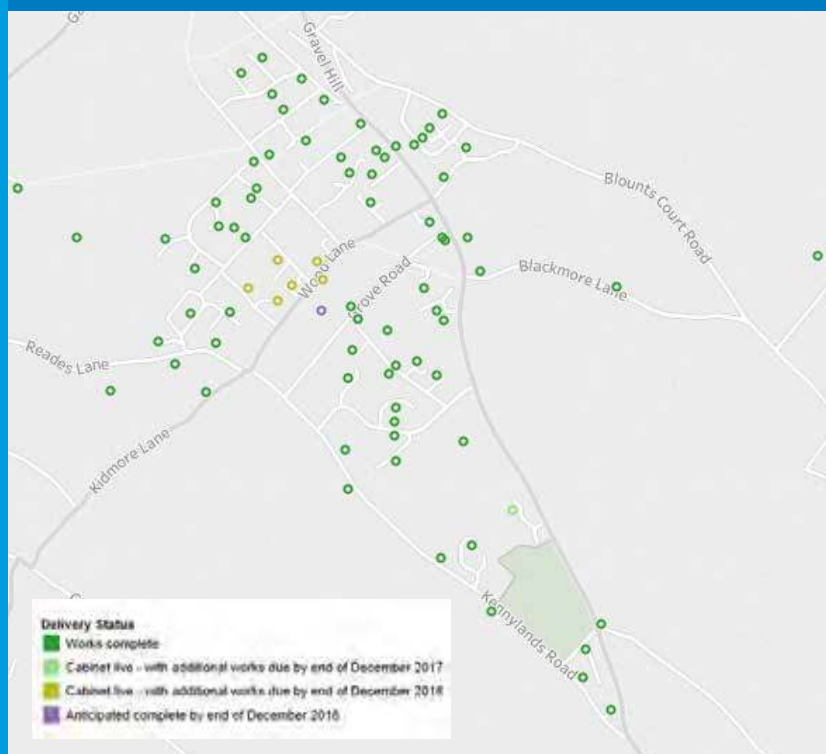
Few premises are forecast to remain without access to superfast broadband, but, where this is the case, Better Broadband has launched a co-funding scheme, which is detailed on the website.

The map shows existing and planned coverage in the village at a postcode level. Once superfast broadband is available, residents should contact your Internet Service Provider (ISP) to request an upgrade.

Note: Within a postcode area some premises may not be able to order a superfast broadband connection due to their distance from a cabinet.

For further information see: broadband@oxfordshire.gov.uk

Email: broadband@oxfordshire.gov.uk ●



NO TIME TO BE BORED

I joined the Parish Council early in 2011 – something to do on dark nights and wet days when gardening (my favourite hobby) was impossible. Well, what did I get myself into? An immensely interesting and challenging role, that's what!

I am 'learning on the job' – firstly as an ordinary council member, then as Chairman of the Planning Committee, and, more recently, as Chairman of the Parish Council, following in the very large footsteps of Douglas Kedge.

When the idea of a skatepark was raised, I was very enthusiastic about making it happen. And I hope you will all agree that the end result has provided a much-needed outlet for a wide range of age groups in the village. But clearly, it has not been without its problems.

Whilst talking about problems, unwanted housing development in the village has reared its ugly head on numerous occasions. However, because we have an extremely well-prepared Neighbourhood Plan, it has helped us provide a solid defence and I am extremely grateful to all those who led and participated in this very challenging process. The latest pieces of excitement have been the refusal of two controversial planning applications – 30 houses on SON 5, off Kennylands Road and the huge potential development of 245 homes in Eye & Dunsden Parish.

There are still so many exciting projects to deal with – a newly-acquired piece of woodland in Old Copse, a large recreation field behind Kidmore End War Memorial Hall – and this is in addition to the day-to-day

workings of the Parish Council. No chance of being bored then! ●

A huge thank you to all those residents who turned out to support the SON 5 meeting in Didcot.



Councillor Carole Lewis, Chairman of the Parish Council

The Edge



HIYA! 😊

It's me Olivia here and for this article thought I would share a recipe that I have been loving recently, it's a recipe I found to make carrot cupcakes, they're super delicious, pretty easy to make and kind of healthy?? That's if cakes could ever be considered healthy...

So, to make 12 of these carrot cupcakes (with cream cheese frosting) you will need:

- 175g of light muscovado sugar (brown works just as well)
- 100g of wholemeal self-raising flour
- 100g of self-raising flour
- 1tsp of bicarbonate of soda
- 2tsp of mixed spice
- Zest of 1 orange (I didn't use the whole orange, it depends on how "orangey" you want it)
- 2 eggs
- 150ml of sunflower oil
- 200g of grated carrots

FOR THE ICING YOU WILL NEED:

- 100g of butter, softened
- 300g of soft cheese
- 100g of icing sugar, sifted
- 1 tsp of vanilla extract
- Plus orange coloured sprinkles to decorate!

Method:

1. Start by heating your oven to 180C/160C fan/gas 4 and line a 12-hole muffin tin with cases.
2. Then in a large mixing bowl, add the sugar, flours, bicarbonate of soda, mixed spice and orange zest. Mix until combined.
3. After that, whisk together your eggs and oil (if you have one, use an electric whisk)
4. Now stir the egg and oil mix with your dry ingredients and add your grated carrot. You want to fold the mixture in order not to crush the carrot and to keep it light and fluffy!
5. Divide the mixture between the twelve cases. I find it easier to use an ice cream scoop to get the perfect amount in each one.
6. Bake your cakes for 20-22 minutes. To test when they're done, poke a skewer into one of the cakes; if it comes out clean, they're ready. If not give them another minute or two.

7. To make the icing, beat the butter until really soft and creamy.

8. Then beat in your cream cheese along with the icing sugar and the vanilla extract.

9. To apply the icing, wait until your cakes are completely cool and place them on a wire cooling rack, take a big blob of icing on a palette knife or cutlery knife and swirl it around the cake. Add your sprinkles and you're finished!

Also, store your cakes in the fridge, they should be eaten within 3-5 days.

Enjoy!!



THE WORLD OF SOCIAL MEDIA

By LEAH TILLEY

Snapchat, Instagram, twitter, Facebook, and Tumblr - these are just a few of the many existing social media apps and websites. Social media is continuing to tighten its grip of influence on humanity, keeping the whole world engaged with its constant new and improved features, which regularly take technology and the media to a whole new level.

These features are always so new and exciting for us: finding a new filter that glams up our faces or a setting which allows us to watch our videos on repeat or in reverse.

But what we don't always realise is the level of heated competition between the companies who release these features to set trends and become the most popular social media site. Statistics show that the most popular forms of social media are:

1. Facebook - with approximately 2 billion monthly users, its popularity arising from its easy-to-use features and incredibly expansive network of users (handy for catching up with old friends). Funnily enough, Facebook was invented by a group of Harvard University students to communicate more easily with each other. Gradually they expanded the number of people using Facebook until it eventually became the world's biggest social media site.

2. Twitter - with its rapid ability to spread news and gossip as well as to follow favourite celebs and events. Twitter is unique because, unlike all the others, you can only type 140 characters per post, making the posts short and snappy and perfect for news flashes and small but important messages that people can read in an instant.

3. LinkedIn - This is useful for business promotion and employment. By April 2017 this important social networking site had 500 million members from across 200 countries. Users post job vacancies, CVs and can invite anyone to connect with them.

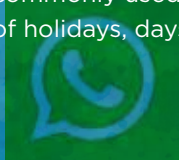
4. YouTube - Not only is this a ragingly popular social networking site but it is the world's second largest search engine after Google, thanks to its ability to search up to thousands of millions of videos from any movie, song, show or vine. Many people follow and adore the hundreds of famous youtubers who vlog their daily lives, make-up habits or funny clips. A whole range of educational videos may be posted on YouTube, like how to solve a maths problem, assemble an Ikea wardrobe, or even learn a whole new language!

5. Instagram - This is the app most commonly used for posting photos of holidays, days out, meals and

memories. It also allows people to keep up with friends and celebs.

6. Pinterest - This is yet another creative social networking app with its artistic images ranging from tropical views, fashionable clothes, hilarious GIFs and inspiring quotes. By following themes as well as people, users can specialise their feed to get a flow of images they can relate to and enjoy.

7. Snapchat - This is my favourite social media app and I was quite surprised to see it last on the list. Perhaps it is only popular with young people due to its format and style. Even if it is seventh on the list, snapchat is one of the fastest growing apps. Snaps disappear shortly after you click on them, so it means that you cannot go back the following day to check on where your class mate was. Similarly, on people's 'stories', snaps only last for up to 24 hours, making this form of media like a daily blog, containing a story of images and videos of what people have been up to. Snapchat also contains many exciting filters to make snaps even more fun and creative. ●



MIKE DOCKREE WINDOWS

We provide and fit

- Windows
- Doors
- Conservatories

In a colour of your choice and also

- replace misty and damaged glass
- hinges, handles and locks

We can also give your conservatory roof an upgrade both in material and colour.

We also provide and fit:

- Fascia
- Soffits
- Guttering
- Cladding



Our windows and conservatories come with a comprehensive 10 year guarantee, full independent inspection with all certificates

Mike Dockree has over 30 years' experience

For your free quotation

**Ring: 01189724376
or 07785928190**

Email:madwindows62@gmail.com

10% discount on windows & doors
when you quote MAD2017

HAVING A CLEAR OUT

Your local antique dealer is
always keen to buy

*Clocks, Watches, Instruments, Silver Items,
Walking Canes, Jewellery & Precious Metals
And All Old & Unusual Items*

HENLEY ANTIQUES

House Calls by Appointment

0118 924 2582 07768 918501

frednickson@henleyantiques.com

WEE-COT SEATING

*Upholstery, Loose Covers,
Replacement Cushions, Chair Caning,
French Polishing & Furniture Repairs*
LIZANNE SMITH Tel: 0118 972 4560

**Paul's Painting and Decorating.
Plastering. Carpentry.
Property and Garden Maintenance.**

07583 623040 or 0118 9473735

Friendly, Local, 30+ Years Experience, Free Quotes



CARL WOODS BUTCHERS LTD

*Purveyors of High Quality Meats to the Retail and Catering Trade
BBQ and Spit Roast Specialists*

Visit our new website

www.carlwoodsbutchers.co.uk

The finest Local Produce, at surprisingly affordable prices

****Free Local Delivery****



5kg Minced Beef just £24.90

Free Range Shoulder of Pork just £11.99

5kg of Chicken Fillet just £23.90




Call us on

0118 972 2228

Supporting British Farmers





FOR THE LOVE OF LANGUAGE

I have two grandchildren and a long-term interest in linguistics and particularly, in English, its origins and development. I've also read and written poetry since my teens. I wanted to give my grandchildren something that would tell them about me and about the English language, how it evolved, why it can be so complicated and sometimes doesn't even seem to make sense!

Think about the word 'ghost' - it wasn't always spelled with an 'H' so why? The reason is because when the printing press was brought to England there was no-one here who knew how to operate it so Flemish printers were brought over to use it. They introduced the H into ghost because it resembled a word they knew and it just hung on in there.

A lot of English is like this, which is what makes it so fascinating. I wrote a series of poems, one a year, describing the evolution of English, since the Saxons, and last year, because it was the anniversary of the death of Shakespeare, the poem is about him and his effect on the spread of English. I laminate these poems and turn them into bookmarks for the children, so that they can keep them. ●

GWEN ALLNUTT

William Shakespeare 1564-1616

In Tudor village and market town
travelling players could still be found,
telling stories in songs and rhymes,
from every land, and every time.

From Rome and Egypt, and ancient Greece,
the Bible, Troy and the shores of Crete.
And in town squares and village greens
people laughed, and clapped, at scenes
of lovers reunited, kings restored to thrones,
princesses freed from castles,
explorers coming home.

In Stratford on Avon, amongst the throng,
a boy called William laughed along
with everyone else at the comedies,
and cried as much at the tragedies.
William Shakespeare was no-one's fool;
he'd learned some Latin and Greek at school,
and considering all he'd heard and seen
thought 'I can write better plays than these'.
So he went to London to act on the stage
and after a while
he wrote his own plays.

Those theatre audiences were never quiet;
they were dirty, raucous and close to riot.
But at Shakespeare's plays, instead of hissing,
and throwing fruit, they began to listen.
Mysteries and histories,
comedies and tragedies:

"Come to Will's playhouse to see and hear
'Romeo and Juliet' and 'King Lear'".

The Globe's audiences spread the word
of 'Twelfth Night' and 'Richard the Third',
and the fame of 'The Bard of Avon' grew
with 'Hamlet', 'Othello', 'The Taming of the Shrew'.

For most of the last four hundred years
Will Shakespeare's name has been revered,
as sonnets and plays in Shakespeare's words
helped spread English across the World.
And in every country of the world, today,
audiences are still watching
Shakespeare's plays.

by GWEN ALLNUTT

TOM FORT FAILING

Old age, a gallant and venerable lady told me many years ago when I could still be reasonably classified as being in early middle age, is a bugger. Having passed 66 in May I am beginning to see more clearly what she meant. Slowly but surely my performance levels are declining.

One symptom I've noticed recently is that however carefully I listen to instructions or directions – say, getting from where I am to where I need to be – ten minutes later I can't remember what they were. Did he say turn left? Or right? Did the house have green gates or black? You know the kind of thing.

Orientation is another. We had a family wedding this summer in Italy for which we stayed in a converted monastery

rectangular in shape with staircases randomly distributed on the various floors. We were on the second floor and for the life of me I could not work out which way to go when I came down one flight of stairs to the next, or where the restaurant or bar were, or where the front door was located, as a result of which I spent much time wandering up and down the corridors like the ghost of some departed monk.

Physically I'm in reasonable shape, but increasingly wobbly on my pins. In waders for fishing I stagger along the bank like a drunk, tripping over every tussock. And of late I've become aware that, more often than not, I am failing the Boxer Short test.

This requires you to get into your boxers standing up, with two clean, decisive movements of feet and legs. Simple,



you'd think. And it always was. But now something happens to my balance. I sway. I stumble. I topple. Then I have to sit on the end of the bed to complete the operation. And as I pull them on I contemplate the future, the downhill path ahead. ●

COOK'S CORNER

Hearty and warming dishes for the Autumn evenings

By SANDY ONOFRIO

CATALAN PORK STEW – serves 6

150ml olive oil / 750g lean pork, cut into bite-sized cubes / 1 large onion / 2 garlic cloves / 1 can chopped tomatoes / 1 green pepper, cored, deseeded and chopped / 1 1/2 tsp paprika / 150ml chicken stock / salt and pepper / 1 tablespoon chopped coriander leaves, to garnish

Heat 2 tablespoons of the oil in a large saucepan. Add the pork and fry over a low heat, turning occasionally, until golden brown on all sides. Remove from the pan with a slotted spoon and keep to one side.

Add the onion and garlic to the pan and cook until soft and golden. Return the meat to the pan and stir in the tomatoes, green pepper, paprika and stock. Season to taste with salt and pepper. Bring to the boil, cover with greaseproof paper and a lid and simmer gently for 1 hour, or until the meat is tender.

Serve the stew scattered with coriander, and plain boiled rice. ●



ROASTED RED PEPPER LASAGNE – serves 9

2 jars roasted red peppers / 9 lasagne sheets / 4 garlic cloves, finely chopped / 1 tablespoon olive oil / 1 can chopped tomatoes / 2 tablespoons chopped parsley / 1 teaspoon sugar / 1 teaspoon dried basil / 1/2 teaspoon pepper / 200g butter / 100g plain flour / 1/2 teaspoon salt / 1/4 teaspoon nutmeg / 350ml milk / 150g grated parmesan

Cook lasagne according to package directions; drain. In a saucepan, cook red peppers and garlic in oil for 1 minute; add the tomatoes, parsley, sugar, basil and pepper. Simmer, for 20 minutes.

In a saucepan, melt butter. Stir in flour, salt and nutmeg until smooth. Gradually add milk. Bring to a boil; cook and stir for 2 minutes or until thickened.

Spread 1/3 of the tomato/pepper sauce in a 13-in. x 9-in. baking dish coated with cooking spray. Top with three lasagne sheets 1/3 of the white sauce and 1/3 of the Parmesan cheese. Repeat layers. Bake, uncovered, at 350° for 30-35 minutes or until bubbly. Sprinkle with remaining cheese. Let stand for 15 minutes before cutting. ●



NATHAN COX PLASTERING

All aspects of plastering work undertaken

- Plastering
- Dry lining
- Flat Rendering
- Coving
- Pebble dashing
- Plaster & hole repair

Over 15 years experience

Tel: 0118 9723010

Email: NJCox.plastering@hotmail.com

WHEELERS ELECTRICAL CONTRACTORS

DOMESTIC INDUSTRIAL COMMERCIAL

"call today for a free estimate"

01491 651356

www.wheelers-electrical.co.uk

Est. 1939



LANGLEY ARB LTD ARBORICULTURE SERVICES

Experts in Commercial and Domestic Tree Surgery

Tree Reductions & Thinning | Hedge & Shrub Trimming
Arboriculture Consultations | Supply & Planting

Telephone 0800 0385434 • Mobile 07775 959579

Email: Enquiries@Langleyarb.com • www.Langleyarb.com

Langley Arboriculture Ltd are an Environmentally, Friendly Company Specialising in Customer Service whilst Providing a Professional Approach to Modern Tree Surgery. All our Staff are Highly Skilled Tree experts who know and understand your Regional Habitat.

Proud members of

Checkatrade.com
Where reputation matters



Computer Problems?

PC misbehaving?

Fault diagnosis, Maintenance & Upgrades, Networking, Data Recovery, Virus Cleaning, Broadband, Telephone Cabling & Extensions, TV, Mobiles, Website Design, Development & Hosting, and much more. Home and Business Support. Windows and Mac.

01491 680036 or 07961 476664

mail@influentialcomputers.com

www.InfluentialComputers.com

Robin, Henry and Angus Piercey

Influential Computers Ltd - A Family Run Business Since 1984

Shaun Guard TV AERIAL SERVICES

- Poor Reception Solved
- Aerials Repaired & Supplied
- TVs - Hung on your wall and tuned
- Extra TV Points - For aerial and Sky (In HD!)
- Sky TV - Also Foreign Language TV

OXFORD AERIALS

Call Sonning Common
01189 639113

Imagine Dry Carpet Cleaning

"no soggy carpets or wet dog smell in your home"

- Spills & spots - gone
 - Smells & odours - removed
 - Deep cleans & lifts carpet pile - like new
- FREE spot & stain remover with every clean**

Have 3 PIECE SOFA CLEANED get One FREE Room cleaned of your choice + Free Stain Guard

You can call us FREE on

0800 180 49 82

We also clean...

Upholstery



Leather & Fabric
with super fast drying

Hard Floors with Anti Slip Coating



Tiles inc Grout • Stone
Karndean & Amtico

zero dry time
Dry Carpet & Upholstery Cleaners

We have dry cleaned carpets & upholstery in over 100,000 homes

ALL MAKES SERVICING

Caring for all your motoring needs for over 50 years!



- ✓ BOSCH Diagnostics
- ✓ Service & Repair
- ✓ Air Conditioning Service & Re-Gas
- ✓ ATA Highly Qualified Technicians
- ✓ Free Collection & Delivery
- ✓ Courtesy Cars Available

Sonning Common Vauxhall

0118 972 2021

Peppard Road, Sonning Common, Reading RG4 9SU

CUSTOMER EXCELLENCE WINNER

Service Open: Mon-Fri 8am - 6pm • Sat 8.30am - 12.30pm • Sun CLOSED

www.sonningcommonvauxhall.com



£10.00 OFF

your next MoT on production of this voucher



TEXTUREPLUS

Free Estimates

Interior & Exterior Decorating

Artexing & Coving / Solving Artex Problems

Floor & Wall Tiling / Wallpaper Hanging / Plastering

Kitchens / Bathrooms / Roof & Guttering Maintenance

Carpentry – Doors + Architraves + Skirting

COMPLETE HOME IMPROVEMENTS

(Quality Comes As Standard)

30 Years Experience / NHBC Awarded / PPL Insured

Insurance Work Undertaken

Tel: 0118 972 1442 or Mobile: 07880 542363

Based in Sonning Common

GIRL POWER

Female Electrician

Local - Honest – Reliable

Please call Jess

07870 507749

for all your
electrical needs



A. B.

WALKER

THE FUNERAL PEOPLE

PERSONAL AND PROFESSIONAL SERVICE
FROM A FIFTH GENERATION FAMILY BUSINESS:
LATER LIFE PRE-PLANNING,
BESPOKE TRADITIONAL AND CONTEMPORARY FUNERALS,
MONUMENTAL MASONS AND BEREAVEMENT CARE

www.abwalker.co.uk

HENLEY 01491 413434

CAVERSHAM 0118 9477007

READING 0118 957 3650



**Golden Charter
Funeral Plans**

SOUTH CHILTERN CHORAL SOCIETY'S SUMMER TOUR TO FRANCE

SCCS enjoyed a very successful tour to Albi at the end of July 2017. The weather was very hot and the hospitality and warm reception was truly wonderful. It was a great way to get to know an area of France with a separate cultural identity from other parts of France, and the fact that the choir sang an arrangement of a song in L'Occitan, the language of the area, was much appreciated by the audiences.

Over 50 people participated in the tour and many new friendships were forged. The choir sang a full concert in the Church of La Madeleine where the audience made an extremely good donation towards the church's restoration and organ fund. Many people enjoyed this concert so much that they attended the mass at Albi Cathedral

where the choir sang a Haydn mass as part of the service. Singing in this 13th century cathedral was a great honour; it is the largest brick building in the world and its impressive size and ambience was quite inspirational. Conductor Paul Burke and accompanist Ian Westley worked extremely hard to ensure the musical content was well done and even managed to look cool in the high temperatures!

As well as concerts the choir had a full itinerary that included wine tasting, a visits to picturesque villages in the beautiful countryside and the arrangements made by the tour organiser Michele Whitehead were applauded by all.

The final event was a fantastic 'get together' with the Ensemble Vocal de la

Vallee du Tarn with whom South Chiltern had done an exchange 27 ago. Some old friends met up again and the magnificent reception laid on with great food and wine, was quite spectacular and it was a very high note to end upon!

A lot of people made a great effort to ensure the success of the tour and South Chiltern has proved to be a very welcoming and friendly society. We welcome all singers and hope someone reading this might be willing to give it a try. It is a lot of fun! New term starts at 7:30pm on Monday 4 September at Chiltern Edge School and you will be assured of a very warm welcome! ●

JOAN GRUMMANT

OXFORDSHIRE COUNTY COUNCIL'S DIY 1,2,3 FOR FREE SCHEME'S CHANGING

The current scheme which has been running at their Household Waste Recycling Centres for 15 years allowed residents to deposit up to three DIY waste items for free before being charged a small fee of £1 for each additional item.

From the 1st October 2017 this changes to a small fixed fee per item of £1.50 for most non-household or DIY items.

Residents can still deposit household waste for free at their local Household Waste Recycling Centre.

More information about the changes can be found online at www.oxfordshire.gov.uk/chargeablewaste

How much will it cost to dispose of DIY waste at a Household Waste Recycling Centre?

Washbasin or sink
£1.50



Toilet pan and cistern
£3



Shower Door or Tray
£1.50



Bag* of soil/rubble
£1.50



Bag* of stonework or bricks
£1.50



Car tyres
£5 per tyre



For bigger projects you might want to consider commercial collection

E.g skip hire
£100+



*For all other materials a 'bag' refers to a 25kg sand sack or equivalent volume of loose material

www.oxfordshire.gov.uk/chargeablewaste

Recycle for Oxfordshire

OXFORDSHIRE
COUNTY COUNCIL

Church news

SHEILA WALKER

As I write, we are still in the throes of saying our farewells to Devon; half of the house looks like the Marie Celeste, the other half like a glorified car boot sale...

We've been in Devon quite a while: my husband, Tim, most of his life, working with various branches of Lloyd's Bank and playing jazz (and barn dance) all over the county and beyond. I came via Salisbury and London, following various jobs including teaching French, writing and editing - starting by anglicising the Living Bible - assorted roles with the Careers Service and most recently as a 'casual' librarian (read that how you will!)

My Christian journey really began in earnest at university in Exeter, where we were privileged to have a number of good speakers who encouraged us to explore the Bible's teaching and think through what it meant for us. Since then, I've been involved with several different churches: most recently as a Reader with a team of twelve rural churches based in Ottery St Mary, then, most unexpectedly, as Curate with four neighbouring churches - so spending Sundays negotiating narrow

lanes, horses, tractors and convoys of cyclists is quite familiar!

Part of the reason for our coming to Oxfordshire is that my son and daughter live in Wallingford and Henley respectively, with the consequent threat/promise of three grandchildren to mind from time to time. We're looking forward to being able to spend more time with them, as well as exploring the Chilterns: Tim has already bought the relevant maps and planned several walks. That's of course when we're not busy getting to know our three new churches and their respective communities and discovering how our new roles will unfold.

We also enjoy painting, music and making curries (Tim); writing, puzzles and making flapjack (Sheila); reading and walking (both): and we will be looking forward to meeting as many of you as possible in the coming weeks, and being able to put names to faces!

Sheila Walker's licensing service will take place on the evening of 14 September at St John's church in Kidmore End. All welcome to take part in this service ●

REVEREND STEWART MORGAN

Stewart Morgan, who has lived in Sonning Common for many years, was ordained as Deacon at Christ Church Cathedral, Oxford, at the beginning of July. He was one of twenty-eight candidates presented for ordination from across the Oxford Diocese.

Born in Scotland and having lived in the Middle East, Africa, the Far East and Europe, Stewart has led an interesting life, competing in motor sport and enjoying a successful career in marketing. He completed a BA Hons degree in Theology and Religion in 2009, and in 2012 became a Licensed Lay Minister and has served the parishes of Rotherfield Peppard and Kidmore End & Sonning Common. Since then, Stewart has trained for several years within the Oxford Diocese and, after a year spent as an ordained Deacon, he will be ordained as a Priest in 2018.

Stewart's ordination was a truly joyful occasion, with beautiful music and a real sense of spirituality and fellowship. Welcome Revd Stewart Morgan! ●

KAREN BROADBENT

ST MICHAEL'S CATHOLIC CHURCH

As you walk or drive past St Michael's you might notice that the exterior looks a little brighter as the outside was repainted during the summer. Our team of gardeners have worked hard to keep the grounds neat and tidy. Earlier in the year almost 30 children made their first Holy Communion and 15 young people were Confirmed by Archbishop Kevin McDonald. Most of the children were pupils at St Martin's, our parish primary school in Caversham Park Village. Archbishop Kevin will return in late September for a weekend to lead our St Michael celebrations.

In July we made a half-day visit to the Newman College, Littlemore near Oxford. This was where John Henry Newman was living when he was received into the Catholic Church in 1845. The resident

religious sisters gave a brief summary of Newman's life with the help of the many pictures in the college library and then showed us Newman's room and chapel. There was time to examine some of the many artefacts associated with his life. The visit concluded with a time of quiet prayer and a picnic lunch in the college garden. For those interested, the college is open to visitors most days (see: www.newmanfriendsinternational.org/newman/?page_id=8).

For regular weekend and weekday Mass times visit the parish website.

Contact details: 0118 972 3418 stmichaels.rc@hotmail.co.uk

www.saintmichaelsonningcommon.org.uk

BRIAN THEOBOLD



Advertise in the
sonningcommon magazine

Delivered to 1,850 addresses

Prices from just £27 per issue
for an advert this size

Perfect for local businesses
and tradesmen

Call John Pearman to find out more on 0118 972 2381
or email advertising@sonningcommonmagazine.org

THE LITTLE WEB COMPANY

CONTACT US
TODAY ABOUT OUR
WEB PACKAGES

Perfectly formed websites for
startups and small businesses

Call on: 07887 902 376
Email: kevin@thelittlewebcompany.com
www.thelittlewebcompany.com



ELL'S DECOR

No Job to Small



inside and outside work
reliable and trustworthy
based in Sonning Common

call Elliot on

07879 478875 or 0118 972 3720

elliott1973@hotmail.co.uk

G B TRANSPORT

DELIVERIES, REMOVALS, HOUSEHOLD
CLEARANCES, STORAGE ADVICE

LARGE VAN WITH TAIL LIFT
IDEAL FOR PIANOS ETC.

GARY BUCKETT
7 GREEN LANE
SONNING COMMON RG4 9NA
0118 924 2763
07990 707125

thebucketts@waitrose.com



a alina homecare
making life easier

**Looking for care and companionship?
Let us help.**

We all value different things at home and in our
community that make us feel like we belong.

So if your confidence or ability to live alone is
affected, there's an awful lot at stake. Whatever you
need, we can help with tailored support that's as unique
as you are. From everyday domestic jobs and personal
care, through to full time live-in care, emergency and
end of life care, our local team can support you at home.
Whether it's one visit a day or several, we can stay for
as long as you need. It's all about you.

Call our friendly team
0118 359 3222

Email us reading@alinahomecare.com

Visit us www.alinahomecare.com

Quote: Sonning Common Magazine

DIARY DATES

OCTOBER

Wednesday 4

10.30am - 12noon

Village Coffee Morning hosted by Sonning Common WI. Open to all. Village Hall

Friday 6

7pm

Friends of Sonning Common Library - Quiz. Village Hall

Mon-Fri 9 - 14

National Libraries Week
Sonning Common Library

Monday 9

2.30pm

FISH - Tea party. Village Hall

Tuesday 10

7pm

Talks by 2 local authors
Sonning Common Library

Tuesday 10

7.30pm

Chiltern Edge Horticultural Society - "Winter Plants" by Thomas Stone
Peppard Memorial Hall

Saturday 14

9.30am - 2pm

FISH Annual Charity Sale
Village Hall

Saturday 14

Short story competition winners announced
Sonning Common Library

Sunday 15

10am - 12noon

Macmillan Coffee Morning
Village Hall

Thursday 19

11.30am

FISH - Pub lunch

Thursday 19

7.30pm

Sonning Common Women's Institute - "Antiques and the Influence of Tea" by Richard Kingston. Visitors welcome
Village Hall

Wednesday 25

10am - 12noon

Antiques Valuation
Christ the King Hall

Thursday 26

FISH - Henley Farmers' Market

NOVEMBER

Wednesday 1

10.30am - 12noon

Village Coffee Morning hosted by Sonning Common WI. Open to all. Village Hall

Monday 13

2.30pm

FISH - Tea party. Village Hall

Tuesday 14

7.30pm

Chiltern Edge Horticultural Society - "Brook Cottage Garden: Through the Years" by Tony Clear
Peppard Memorial Hall

Thursday 16

11.30am

FISH - Pub lunch

Thursday 16

7.30pm

Sonning Common Women's Institute - "The Village Gardeners" by Chrissie Phillips-Tilbury. Visitors welcome. Village Hall

Monday 20

8pm

Sonning Common Parish Council. Village Hall

Wednesday 22

7.30pm

"Romero - heartbeat of El Salvador" performed by Rise Theatre St Michael's Church

Thursday 23

FISH - Henley Farmers' Market

Thursday 23

7pm

Friends of Sonning Common Library - AGM
Sonning Common Library

ADVERTISERS DIRECTORY

A B Walker & Sons Ltd Funeral Directors	30	Mike Farina Auto Services Ltd	Back
Adams Cars	9	Milo Technical Support (Computers)	35
Alina Homecare	33	Mike Dockree Windows	26
AMAXS Plumbing Heating Electrical	16	Moore's Painting, Decorating & more	8
Barrs Insurance Services	Back	Nathan Cox Plastering	29
Barn Store (Secure Self Store)	22	Paul's Painting, Decorating and more	26
Beacon Flooring	8	Peppard Building Supplies	8
Beville Estate Agents	2	Pet Country Supplies	22
Bondright Roofing Services	Back	Pilates ABC	35
Bonner Locksmiths	12	Property Maintenance	22
Book-keeping & Payroll Services	9	Red Kite Electrical	9
Brambles Floral Service	9	Robin James Opticians	9
Bridges Estate Agents	17	S J Hinton Carpenter & Joiner	35
Carl Woods Butchers Ltd	26	Sonning Common Beauty	35
Carpet Fitter	2	Sonning Common Garage	30
Caversham Aerial Services	2	Sonning Common Pet Care	12
Chiltern Beauty	12	Sonning Common Pre-School	2
Compass Water Softeners	12	Spruce Property Maintenance Service	16
Computer Repairs	22	Studio One (Pilates, Matwork & Yoga)	8
Curtains, Blinds, Pelmet's,	16	T C Fuller Plumbing & Heating	35
Davis Tate Estate Agency	8	Tandoori Connoisseur	35
E H Hamley & Son (Builders & Decorators)	9	Tereena Hartin Personal Trainer	Back
Elements Kitchen Design	2	TexturePlus (Interior & Exterior Decorating)	30
Ell's Decor	33	The Little Web Company (Website Design)	33
Family Hairdressing	12	Time 4 Pilates	9
Functional Physio	Back	Tomalin and Son Funeral Directors	Back
G B Transport (Removals)	33	TV Aerial Services	29
Girl Power (Electrician)	30	Undeniably Podiatry	12
Graham Blake Soft Furnishings	16	Wee-Cot Seating	26
Heights Tree Care	16	Wood Lane Dentistry	2
Henley Antiques	26	Wheeler's Electrical Contractors	29
Henley Glazing & Window Centre Ltd	35	Zero Dry Time (Dry Carpet Cleaning)	29
Influential Computers	26		
Kennylands Gymnastics	16		
Kidbys Sheds	9		
Kidmore End Pre-School	22		
Langley Arb (Tree Surgery)	29		
Laurence Hansen	22		
(House & Property Services)			

The FISH Volunteer Centre runs regular door-to-door shopping trips to Tesco in Henley every Monday morning and to Henley Waitrose, Henley Farmers Market, Morrisons in Reading and Reading Town Centre every month.

The programme of shopping and leisure trips for each month is published and distributed on 20th of the preceding month and bookings are taken from that date. Copies of the programme are available the FISH Volunteer Centre, Sonning Common Library, the Christian Community Action shop, Pet Country Supplies and on request from Carson's Chemist. The monthly programme of trips is posted on noticeboards in both Peppard and Sonning Common.

Details of all minibus trips can also be found on the FISH website www.fishvolunteercentre.co.uk

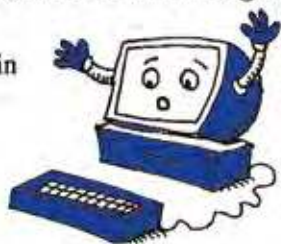
For more information and to book any trip call **0118 972 3986** any weekday between 09.30 and 11.30 a.m. ●

Computer Problems?

Free quote, no fix no fee, no call out charge

Over 200 happy customers in
Sonning Common.

Milo and Michael Harper



Milo Technical Support
22 Sedgewell Road

0118 972 4905

HENLEY GLAZING AND WINDOW CENTRE LTD

01491 629901

Glass Supply, Glazing Service, Mirrors, Shelves, Table
Tops, sealed Units, Lead Lights, Locks, Secondary
Glazing, Shower Screens

Suppliers & Installers of: UPVC, Aluminium & Timber
Windows, Doors & Conservatories, Facias, Soffits &
Guttering



12, Manor Farm, Peppard Common, Henley on Thames RG9 5LA
Fax: 01491 629904 Email: andy@henleyglazingwindow.co.uk

PILATES IN SONNING COMMON + HENLEY



CONTACT Alyth Yealland
alyth@pilatesabc.co.uk

07521699265 www.pilatesabc.co.uk

T.C. FULLER PLUMBING & HEATING

• Installation • Maintenance • Service • Repair
Boiler replacement, heating system upgrade &
adaptations, power flush.

Hot water cylinder replacement.

All plumbing work undertaken.

Bath/Shower rooms, water softeners-salt supplied.

• No call out charge • Free estimates • Fully insured

Tel: 0118 9724097

Mob: 07800 914 880



225032

TANDOORI

Connoisseur

21 Wood Lane
Sonning Common
0118 972 3104 / 972 1054

*Come & Experience authentic
Tandoori & Bengali Cuisine*

- ★ Fully Air-Conditioned
- ★ Large Groups Catered For
- ★ Open 7 Days a Week

TAKE-AWAY MENU

We Guarantee Prompt Service on All Orders

S J HINTON Carpenter & Joiner

Wide range of high-quality carpentry
services delivered by skilled craftsman

Built-In Wardrobes, Cupboards, Shelving.
Kitchen Fitting, Doors, Floors, Windows,
Stairs, Roof Construction.

Telephone Steve on 0118 972 3602
or 07887 653866

Sonning Common Beauty

12 Newfield Road Telephone 0118 972 3059
www.sonningcommonbeauty.co.uk

- MANICURE • PEDICURE • ORGANIC FACIALS
- MD FORMULATIONS GLYCOLIC PEELS
- WAXING • LASH AND BROW TREATMENTS
- SPRAY TANNING • MAKE-UP • MASSAGE
- BRIDAL HOLIDAY AND MUM-TO-BE PACKAGES AVAILABLE

Gift Vouchers Available

Some reduced price treatments available each
week please ring to check availability



Sonning Common Health Centre
Wood Lane, Sonning Common,
Reading, RG4 9SW

- Back & Neck pain
- Muscle / Joint Strains
- Ligament Sprain
- Sports Injuries
- Whiplash Injuries
- Shoulder Injuries
- Post-Operative Rehabilitation
- Pre / Post Natal Exercise
- Respiratory Conditions
- Lower Limb & Foot Problems

- Appointments available every day
- Pilates classes throughout the week

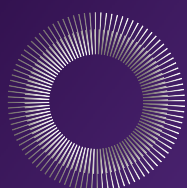
Jo Pereira MCSP
Catherine Matthews MCSP
Chartered Physiotherapists

T: 01189 722 745

E: info@functionalphysio.co.uk

www.functionalphysio.co.uk

The team at Functional Physio are Chartered Physiotherapists registered with the Health Professions Council and are recognised by all major insurance companies, including Bupa and Axa PPP.



Tereena Hartin

PERSONAL TRAINER

For information on personal training, lifestyle and nutrition advice, please contact Tereena:

T: 07702 296210

E: tereena.hartin@yahoo.co.uk

Mike



Autoservices Ltd.
Tel: 01189 724036

...Competitive Prices

...Excellent Service

Servicing and Repairs on any make

Tyres ♦ Batteries ♦ Exhausts

MOT ♦ Car Sales

**Mike Farina Auto Services Ltd,
21 Sedgewell Road, Sonning Common,
Reading, RG4 9TA**

Your Long Established Local Garage

0118 972 4036



Find us on:
facebook®

T&S

**Tomalin & Son
Funeral Directors**

**Henley-on-Thames family run
Independent Funeral Service**



Golden Charter
Funeral Plans

£40 John Lewis voucher or
£40 donation to Sue Ryder Care
with each pre-paid funeral plan taken out on production of this advert

Tel: (01491) 573370

www.tomalins.co.uk tomalin@btconnect.com
Anderson House, 38 Reading Road, Henley-on-Thames, RG9 1AG

Fed Up With Call Centres

Barrs Insurance

Mark & Helen Richards
Your Local Insurance Brokers
For The Unusual & The Usual
Let Us Take Care Of Your Insurance

- House & Contents • Business • Liabilities
- Travel • Landlords • Professional Indemnity
- Horse • Shops • Sickness / Accident
- Commercial / Unusual Vehicle

If It's Not listed We Still Can Help
All Types Of Insurance Enquiries Welcome

0118 924 2603

mail: info@barrs-insurances.co.uk

www.barrs-insurance.co.uk

Unit 2, Kidby's Yard, Kennylands Road, Sonning Common RG4 9JT
Authorised and Regulated by FCA

Your Local Roofing Company

ROOFING PROBLEMS?

- ♦ Flat roofs – all types of long term systems
- ♦ Slate/tile work
- ♦ Chimneystack works
- ♦ Re-roofs
- ♦ Lead works
- ♦ Roof repairs & surveys
- ♦ Dormer & Velux windows
- ♦ Upvc soffits & fascias
- ♦ Insurance backed guarantees
- ♦ Free quotations
- ♦ CHAS Registered



Bondright Roofing Services

Freephone: 0800 1692361 or Henley 01491 579659

www.bondrightroofing.co.uk

admin@bondrightroofing.co.uk

Mercurial Systems Ltd.