



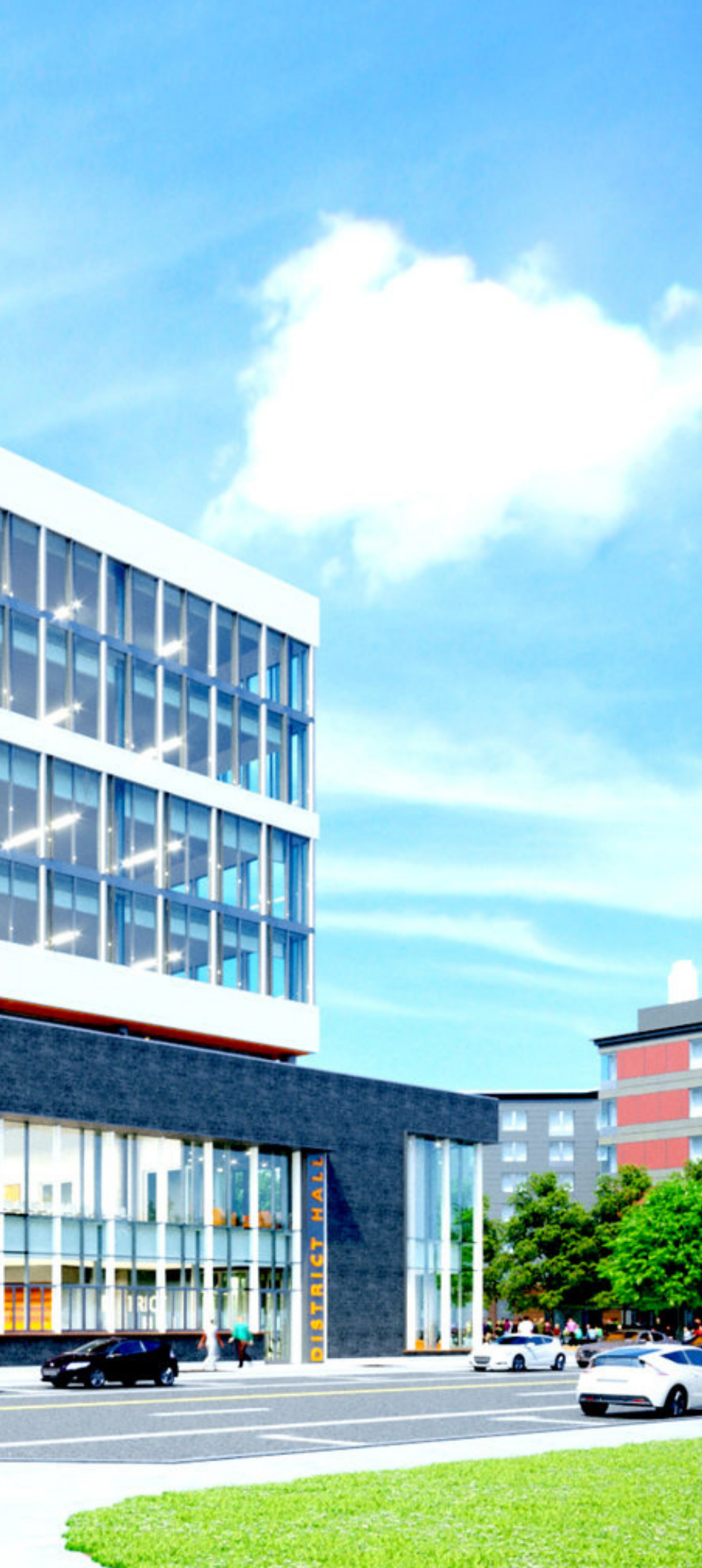
ANNUAL
REPORT

2020

THE KING'S
CATHEDRAL

thekingscathedral.com





Contents

03	Bishop's Reflections
04	Year In Review
05	Ministry Statistics
07	2020 Teaching Journey
08	Social Interactions
09	Global Disruptors
11	SOZO Connections
13	Financial Highlights

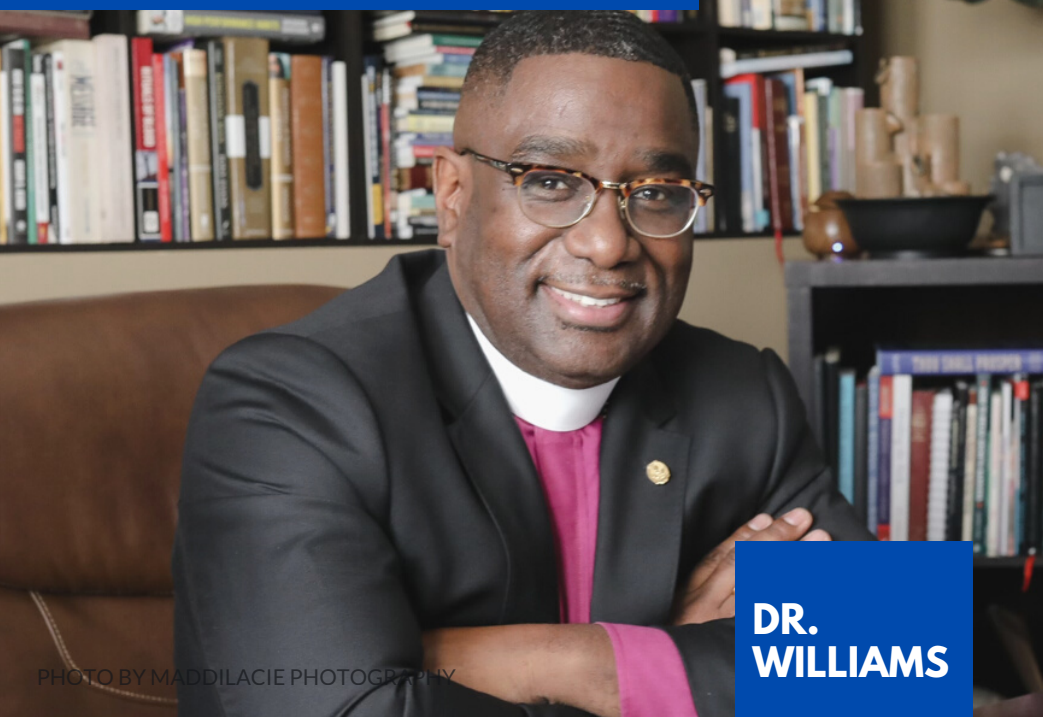


PHOTO BY MADDILACIE PHOTOGRAPHY

**DR.
WILLIAMS**

I cannot help but reflect on how gracious God has been to us as a ministry over the past year. Truly, even from the beginning some twenty-one years ago, it is evident that God has been with this Cathedral. Often one doesn't know to what extent some endeavors will be successful until years down the road. Well, here we are: down the road, and indeed, the Hand of the Lord has been gracious to us. This annual report will read much like a history lesson for the past year. But more so than that, I hope it will be a clear reminder of what can happen when a group of people makes Jesus the Lord of their lives, band together for a greater purpose, and sacrifice. What the Lord has done with and through this ministry is nothing less than miraculous. To quote the writer, St. Mark, *"This was the Lord's doing, and it's marvelous in our eyes"* (Mark 12:11). We've all felt the global impact of the Coronavirus (COVID-19). Even if you

were not infected, you were undoubtedly affected by it in some way. The Lord's Church wasn't exempt from its impact. Many who Name the Name of Christ suffered, and some even transitioned to Heaven. I've personally known dozens of friends and colleagues whose time on the earth was cut short due to COVID-19. But the Lord's Mercy and Grace are greater than any demonic virus; we are more than conquerors. The most insidious intrusion of this virus was how it altered how and when the Church gathered. By mandate, we could not gather face-to-face or in large numbers. No one could have ever imagined this. However, we saw it as an opportunity to reassess and re-envision what the Church was, its role, and its methodology. For so many, it was about going to church rather than being the Church. Having a building for corporate gatherings was seen as the ultimate. But having the wisdom to sell the church building at the beginning of 2020 can only be described as God's leading and provision. Even before the

pandemic, the building was not structured to meet the needs and vision of the Church long-term. It was a grand, old building indeed and did serve a purpose for over a decade, but it wasn't what we need going forward. The Church is a people who gather, not a building or facility we simply visit. Undoubtedly, we will own properties in the future; however, they will help expand the ministry rather than claim the focus of the church's finances and energies. Not having a "church" to go to and being hindered from gathering due to the restrictions of COVID-19; required us to ask ourselves several questions: 1) *what is the Church from a Scriptural perspective?* 2) *what are ways to continue learning and meeting the needs of the Body without physical, weekly meetings?* 3) *how can we be even more effective in the Church's mission going forward, even if we don't return to the way things were pre-COVID-19?* All essential questions we should revisit often. So, re-envision TKC is what we did. With a renewed focus on SOZO Groups and other small group meetings, along with empowering more people to carry the weight of the ministry and emphasizing reaching out to others within our community, we are a healthier ministry, ultimately more effective. Never again will we see ourselves as a church building, rather a ministry with a local and global reach - supernatural, relevant, practical, and Biblically sound. It's your partnership, commitment, and involvement that makes TKC what it is. Thank you for your prayers, sacrifice, commitment, and partnership. Lady Lelani and I love each and everyone one of you and thank God every time we pray for you. May you continue to experience the manifold graces and blessings of God for your partnership with us.

2019 Faithfulness Brings 2020 Grace

YEAR IN REVIEW

In January 2019, Bishop Williams called a church-wide 52-week fast. Three hundred and thirty-four people joined us to purposefully sacrifice one day a week, turning down our plates and focusing on the Lord for an entire year. When the fast was introduced, we had no idea how desperately we would depend on those prayers sown, as the coronavirus turned our world upside down.

Reflecting on 2020, we have experienced unprecedented circumstances, including a national shelter-in-place order; the magnification of racial trauma; an outcry against that racial injustice, which has sadly remained a steady undercurrent throughout our nation's history; an ever-sharpening political divide; and significant economic challenges. It is important that we pause to acknowledge the unimaginable

losses many have experienced—in loss of life, livelihood, and home—from COVID-19 and the other immense challenges faced in 2020. Pause for a minute and think about how much we have endured! The amount of physical and emotional exertion required to simply live right now can feel quite overwhelming. But God!

Our prayer is that our church community will live the words of Micah 6:8: "...And what does the Lord require to you? To act justly and to love mercy and to walk humbly with your God." Through it all, and despite it all, we're so grateful for how God has sustained us. This Annual Report will provide an overview of God's unmerited favor to this ministry through spiritual vitality, financial provision, and ministry impact.



Ministry Leadership 2020

Jeffery Williams, D.Min, MPA
Bishop/ Chief Empowerment Officer

Lelani Williams, MBA, MA
First Lady/ Chief Of Operations

Elders

Rufus Abdullah
Russell Gross
Victor Pereira
Sandra Robinson

Deacons

Cheryl Gray, Chief Deacon
Alisa Diakite
Addie Hill
Tim Kilgore
Dana Watkins
Vironica Olawale
OJ Silas

Sozo Leaders

Rufus Abdullah
Cheryl Cromwell
Johnny & Ramie Duré
John & Crystal Francis
Brodie & Greg Friesen
Julia Hall
Victor Pereira
Deborah Rezendes
Sandra Robinson
Dana Watkins

Board of Directors

Jeffery Williams, D.Min, MPA
Lelani Williams, MBA, MA
Rev. Jose Encarnacion, MPA
Collin Bailey, Esq.

Ministry Leaders

Johnny Duré
Dfree; Processing Team; Assistant to the Bishop

Ramie Duré
Health & Wellness

John Francis
Communications

Jetzabel Mills
Children's Ministry

Brodie & Greg Friesen
Sozo Small Groups

Inglish Gardner
Connection Center

Cheryl Gray
Angel Touch Visitation

Julia Hall
Ushers

Tim Kilgore
Security

Raymond Mills
Assistant to the Bishop

Altonio Roberts
Media Ministry; Assistant to the Bishop

Victor Pereira
Men's Ministry

Elizabeth Succart-Perez
Pearls Women's Ministry



Families
95



Partners
127



Women's Ministry
18
meetings
288
participants

.....

WELCOME



Guests
87



Men's Ministry
16
meetings
240
participants

.....



Volunteers
67

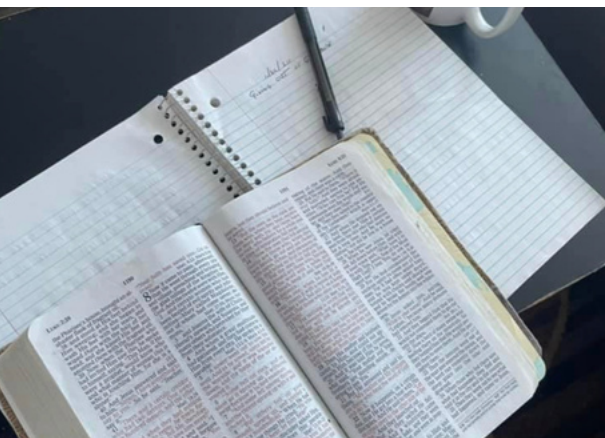


Dfree
2
classes

dfree® 12-week course that addresses the cultural, psychological and spiritual influences on financial wellness and offers practical strategies for achieving financial success.

TEACHING JOURNEY

Just a few of topics preached this year that helped us stay focused on God's grace and mercy. There were many, many more word seeds sown... And don't forget the 40 Day Word Fast:



"What do We Do Now?"

"Resurrection Power: Are You Qualified to Receive it?"

"How to do Quarantine God Style"

"How to Become a Miracle Worker Series"

"The Apostolic Shift"

Atonement

A
Miracle
Service"

"Actions of
Uncommon
Worshiper"

"Reigning Over Pain:
The Ascension Of Jesus &
Why it Matters"

"Before You
Get There"

"New Church the
Old Way Series"

"From Broke to Blessed:
5 Consequences of the Resurrection"

Most Viewed

1,200

"Remembering
Jesus"

Highest Reach

4,408

"The Blessing of
Quarantine"

SOCIAL INTERACTIONS

THE CHURCH HAS LITERALLY LEFT THE BUILDING

Although we literally moved out of our church building at the end of 2019, the onset of the coronavirus pandemic put a halt to our 2020 plans and prompted an immediate and radical shift to a fully virtual ministry. Thankfully,

we have been taught that God does not live in a building. He lives in our hearts. We worship Him anytime and anywhere. Armed with three years of Morning Decree Broadcasts, we were well prepared to

shift quickly. Our amazing volunteers seamlessly implemented streaming and social media platforms to accommodate weekly livestreamed services and soon after, we were able to offer ministry to children



FACEBOOK
FOLLOWERS
1,284

72.5% Women
27.5% Men



YOUTUBE
SUBSCRIBERS
58

Channel Started
June 2020



WEBSITE
VIEWS
8,775

New Site Launched
March 2020

Views



41,292

ENGAGEMENTS



22,658

Engagements include likes & comments

Reach/Shares



126,695

online well. May God continue to lead us in finding bold new, and exciting ways to help more people discover life in Jesus. As a result of our move to virtual services, we now have

a greater opportunity to minister to the masses near and far. We have embraced this as a tremendous growth opportunity as people seem to be more receptive to the Gospel. We are working

through what all this means for us as a church, both now and in the future. However, we know we will continue to get the "Word" out by any means available.

Global Disruptors

Serving the Local & Global Community

Locally, we are involved in our community by holding board positions; providing food and clothing; continuing hospital and nursing home visitation; and offering educational, business, and financial literacy classes. Among our initiatives, we have collaborated with the ONE Neighborhood Builders Community Health Workers, delivering Stop & Shop gift cards, toiletries, cleaning supplies, face masks, gloves, disinfectants, and hand sanitizers to single mothers. As we do annually, again this year we were able to donate Christmas

gifts to children in need, as well as gift cards to help families enjoy the holidays. We also donated hat and glove sets to children and teens under the age of fifteen.

In food donations, we donated 1,464 pounds food through the partnership with Chipotle, KFC and Fleming's Prime Steakhouse & Wine Bar to families in need.

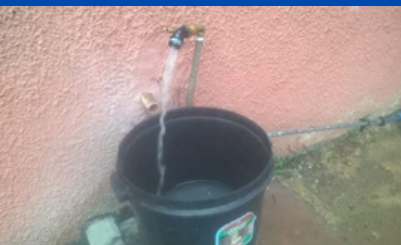
These opportunities have helped us provide weekly meals to 100 families per week.

We have also fully embraced our global calling as well. We have ministry outreaches over 40 nations: Haiti, the Philippines,

and several countries in Africa, including Zambia, Burundi, and Kenya, to name a few. And through technology, we have reached at least 17 other African nations.

The focus of our international ministry is to help develop people in areas they have determined will help move them forward economically. To offer a specific set of examples, in Burundi, we supported financial education as well as both coffee bean farming and a sewing school, where all products can be sold for stable economic growth. In Zambia, we assisted with an orphanage and a primary school. We also supported businesses with economic





development and developed freshwater wells to create clean drinking water for the community. In Kenya, we have lentil bean farms and led property acquisition, renovation, and development projects. In the Philippines we have supported local pastors, provided vehicles and sound equipment for evangelism.

Although we have been in quarantine, recently preached the Gospel of Jesus Christ to 182 nations of the world - All in the midst of a pandemic and without a church building! We have preached live on The Precious Television Network, out of Accra Ghana (which reaches the whole of West Africa), King Television which blankets all of Pakistan, and into Iraq, Iran, Afghanistan, Saudi Arabia, and China. Our ministry to Pakistan, resulted in over 174 people giving their heart to the Lord. 103 testified of God healing their bodies in the virtual service.

And we were able to send 70 bibles in their native language.

In addition, in March of 2021, on JBN International, based in Honduras, will be carried over 2500 cable systems in Central and South America - 100,00 viewership. We are so honored to be able to do this work.



COMMUNITY

AUTHENTICITY

TRANSPARENCY

61

PARTICIPANTS



GROUPS

6

7

MATTHEW PARTIES

4 in-person | 3 virtual

FACILITATORS

13

ages 20's - 70's

8

**NEW
FACILITATORS**

4

FACILITATOR TRAINING



3

**BOOKS
STUDIED**



Virtual Connections

The Greek word "SOZO" describes wholeness, deliverance, forgiveness, and healing, the components of our salvation given to every believer.

SOZO small groups are designed to help the Church Body grow in their relationship with God and those within and outside of TKC. To ensure the Body of Christ continues to grow as disciples of Christ despite coronavirus-related shutdowns, SOZO continued to meet virtually. SOZO groups studied how to share and demonstrate the Gospel in practical ways both at work and in the community while embracing God's Grace. Led by capable facilitators, regularly trained and coached throughout the year, SOZO is a place where we grow in our relationship with the Lord and gain insight into how to apply the Gospel to our daily lives in practical ways. Matthew parties allow for genuine fellowship and an opportunity for those outside the Body of Christ to come to experience God's love. Groups have come together to serve the community by providing meals



to women at Crossroads. Groups demonstrate love one for another with food, finances, transportation and furniture during COVID challenges for SOZO and community members in need. However, SOZO is also a place where we learn how to live out our lives together in a real way. Birthday and anniversaries are celebrated, support in times of mourning and personal achievements. Marriages have grown stronger, and friendships have grown deeper.

SOZO is genuinely a place where we can learn to live the Gospel in an authentic, transparent community.

We started 2020 immediately after the sale of our 1850 and 1860 Westminister Street church properties and moved out. Although we left our home of eleven years with heavy hearts, it opened the door to new opportunities and a fresh start by eradicating all long-term debt: \$2.2 million! Allowing us to prioritize the ministry's mission rather than maintaining facilities. Though we did not "profit" from its sale, we certainly gained our freedom - Free at Last. We were able to move into our new innovative administrative offices at the CIC (Cambridge Innovation Center - 225 Dyer Street, Providence, RI), where we get to interact with many businesses and organizations while demonstrating Jesus every day.

The generous and faithful giving we received throughout the fiscal year 2020

was incredible. With the help of 816 contributors, and 120 faithful tithers, we totaled over \$440,000 in revenue. These contributions support our regular church operations, ministries, staff and to fund our local and global mission work.

We are grateful to the Lord and to you, our partners and friends, for the opportunity to report that we are ending the fiscal year in the black—with all our expenses met. Undoubtedly, this is the direct result of the consistent and generous giving and cost-effective management of the staff.

"For God is not unjust so as to overlook your work and the love that you have shown for His Name in serving the saints, as you still do"
(Hebrews 6:10)

Income

Tithe Account	\$366,409.00
Offering	\$60,647.00
Williams Educational Foundation	\$4,621.00
Ministry Program Income	\$950.00
Benevolence	\$1,830.00
Missions	\$3,427.00
Other Revenue	\$11,542.00
Total Operating Revenue	\$449,426.00

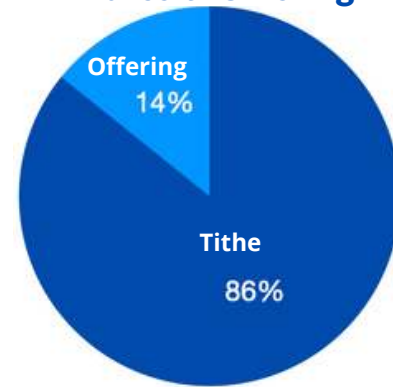
Expenses

Payroll Expense	\$75,945.00
Benefits	\$75,749.00
Facility & Equipment	\$87,142.00
Operations	\$45,113.00
Ministry Programs	\$14,329.00
Church Expenses	\$49,113.00
Contract Services	\$28,342.00
Benevolence	\$13,789.00
Missions Expense	\$11,449.00
Travel & Meeting Exp	\$7,006.00
Utilities	\$4,207.00
Events	\$1,922.00
Other Expenses	\$3,392.00
Total Expense	\$417,498.00
Net Ordinary Income (loss)	\$31,928.00

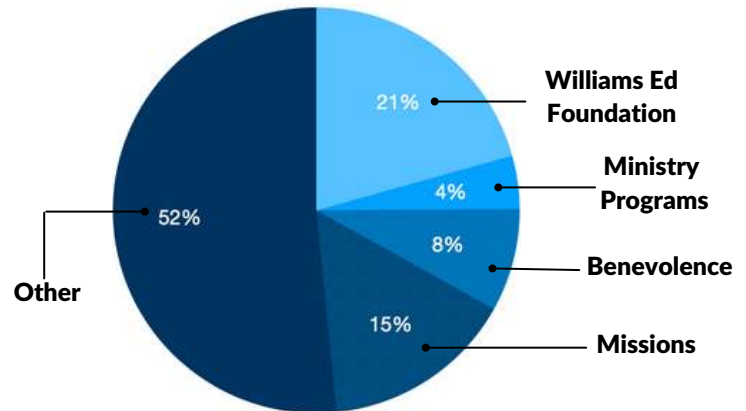
Statement of Financial Position

Assets	
Checking & Savings	\$26,729.00
Fixed Assets	\$53,068.00
Total Assets	\$79,797.00
Liabilities	
Current Liabilities	\$5,389.00
Long-term Liabilities	\$20,327.00
Total Liabilities	\$25,716.00
Total Equity	\$54,081.00

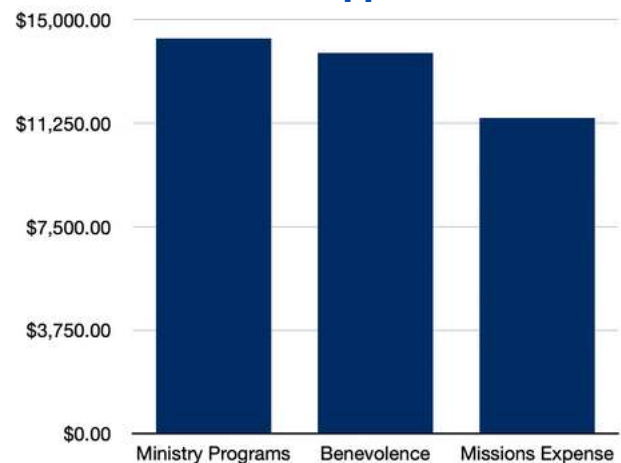
Tithe & Offering



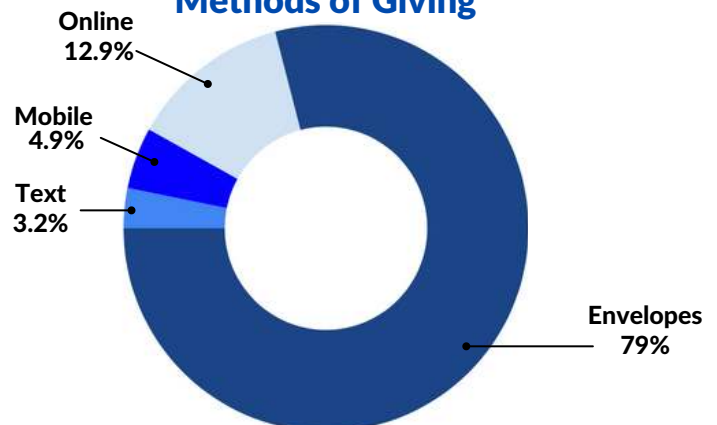
Giving in Other Areas



TKC Support



Methods of Giving



THE KING'S CATHEDRAL

225 Dyer Street
2nd Fl.
Providence, RI 02903

PH: 401.780.8900



royalty@thekingscathedral.com



www.thekingscathedral.com



SUBSCRIBE

