

# LEON LEVIN<sup>®</sup>

Your  
Favorite  
Things



**LET US DO THE WRAPPING!**  
**GIFT BOX & PERSONAL NOTE FOR \$9.95**

**FREE LEON LEVIN** print mask  
with your print order.

1.866.937.5366

[www.LEONLEVIN.com](http://www.LEONLEVIN.com)

**FREE MATCHING PRINT MASK**  
will be included in your print order.



CHARMING (28A)



WINDOW SHOPPING (28B)



SPLASH ZONE (28C)



JOLLY HOLLY (28D)



PRETTY POINSETTIA (28E)



WINTER WONDERLAND (28F)

BLACK  
(090)

WHITE  
(000)

RED  
(040)

**Wear Everywhere  
Cardigan**

Easy care, machine wash.

**MORE COLORS on page 11**

Style #	Sizes	Price
4418	XS, S, M, L, XL	\$79.00

ONLINE: [leonlevin.com](http://leonlevin.com)

2

CALL: 1.866.937.5366

# Sparkle *and* Shine

The holidays are busy.  
We know you like to keep  
your cool in an effortless  
**LEON LEVIN** print polo.

*Diandra*  
*is wearing*  
WINTER  
WONDERLAND  
(28F)



*3/4 Sleeve*



*Short Sleeve*



*Long Sleeve*



Wrap It  
for  
**\$9.95**

Printed on our ultra soft 100% natural cotton jersey knit fabric.  
Select your favorite sleeve length. Easy care. Machine wash - hang dry.

	STYLE	SIZE	PRICE
Short Sleeve	103	S, M, L, XL	\$59.00
3/4 Sleeve	102	S, M, L, XL	\$64.00
Long Sleeve	105	S, M, L, XL	\$64.00
Long Sleeve Petite	105P	PS, PM, PL, PXL	\$64.00



WATERMELON  
(30C)

COZUMEL  
(29P)

BLUSH  
(30E)

HYDRANGEA  
(30D)

MALACHITE  
(30J)

RIVIERA  
(27P)

SUNDANCE  
(30B)

CRIMSON  
(30i)

ROSE  
(30F)

CLEARWATER  
(266)

SPEARMINT  
(751)

VIOLET  
ROYALE (30H)

HARBORSIDE  
(30G)



## Band-Bottom Polo

Comfortable ribbed hem stays in place all day. Our signature collar and placket are recognized everywhere.

A true classic!

### NO PETITES

Style #	Sizes	Price
104	S, M, L, XL	\$49.00

CALL: 1.866.937.5366  
ONLINE: [leonlevin.com](http://leonlevin.com)

Stay Flat  
Waistband

Stay Flat  
Pockets

★ SAND  
(S50)

★ WHITE  
(000)

★ INK  
(E76)

★ BLACK  
(090)

A  
CUSTOMER  
Favorite!

## Original LEON LEVIN Fly-Front Pant with Side Elastic

Designed with stay-flat waistband with spot elastic on back for ease. No-pucker pockets.

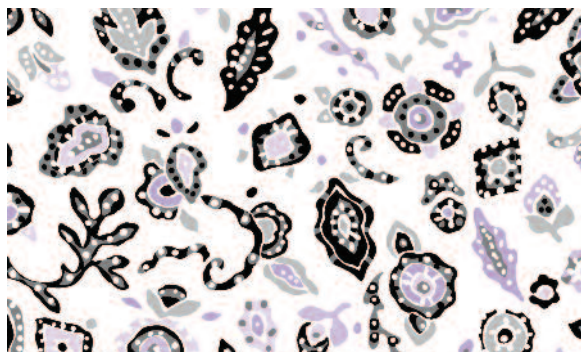
Style #	Size	Price
<b>REGULAR</b> (30" inseam)		
L1016	6 to 18	\$74.00
<b>PETITE</b> ★ (28" inseam)		
L1016P	6P to 18P	\$74.00

56% cotton / 42% polyester / 2% spandex  
Easy care - machine wash and dry.

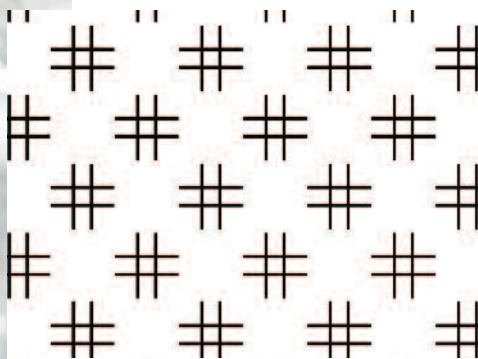


# FREE MATCHING PRINT MASK

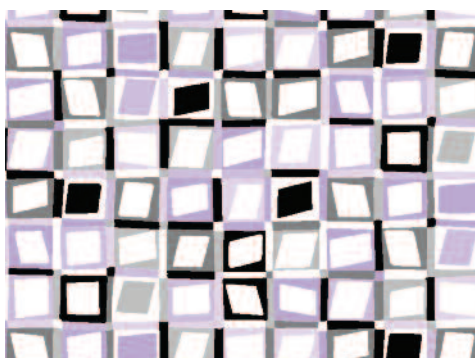
will be included in your print order.



CLIP ART (27B)



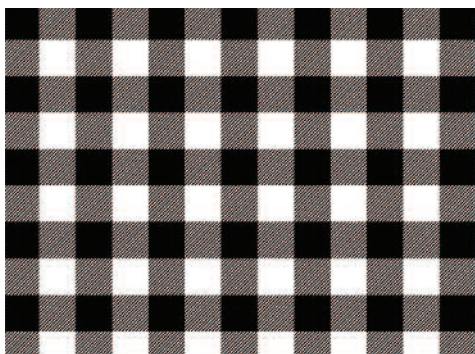
HASH-TAG (27C)



ROLL THE DICE (27D)



FIELD FINDS (27A)



CHECK-MATE (27F)

BLACK  
(090)



WHITE  
(000)



PANSY  
(758)



## Wear Everywhere Cardigan

Easy care, machine wash.

**MORE COLORS on page 11**

Style #                      Sizes                      Price

4418                      XS, S, M, L, XL                      \$79.00

1.866.937.5366                      leonlevin.com

# Eclipse

Accessorize these black and white prints with your holiday baubles for that extra twinkle. These look terrific with our ankle pant in Charcoal or Black. See page 8.



*Diandra*  
is wearing  
**CHECK MATE**  
(27F)



Printed on our ultra soft 100% natural cotton jersey knit fabric. Select your favorite sleeve length. Easy care. Machine wash - hang dry.

	STYLE	SIZE	PRICE
Short Sleeve	103	S, M, L, XL	\$59.00
Short Sleeve Petite	103P	PS, PM, PL, PXL	\$59.00
3/4 Sleeve	102	S, M, L, XL	\$64.00
Long Sleeve	105	S, M, L, XL	\$64.00

SAND  
(S50)

CHARCOAL  
(S60)

BLUE HAWAII  
(S70)

BLACK  
(090)



A  
SNOWBIRD  
*Favorite!*

## *Ankle Pant* with Comfort Stretch

Easy-on pants never looked so good! Trust us, the smooth styling is going to be your new favorite pant.

Wear with your favorite Levin polo.

### **ANKLE PANT** (27" inseam)

<u>Style #</u>	<u>Size</u>	<u>Price</u>
202	8 to 16	\$69.00

76% rayon / 21% nylon / 3% spandex  
Machine Wash.





DAYBREAK  
(20H)

CARNATION  
(753)

NIAGRA  
(32P)

LEMONADE  
(509)

WHITE  
(000)

INK (E76)

SPEARMINT  
(751)

ROSETTE  
(30P)

BLUEBELL  
(755)

BLACK  
(090)

RED  
(040)

BERMUDA  
PINK (264)

CREAM  
(005)

*Classic*  
Long Sleeve Polo

The Classic Long Sleeve Polo is made with our soft, easy care jersey knit. Our unique tailored collar & button cuffs on the sleeves gives a crisp, clean look wash after wash.

REGULAR SIZES

Style #	Sizes	Price
105	S, M, L, XL	\$54.00

60% cotton / 40% polyester knit  
Easy care - machine wash.

CALL: 1.866.937.5366  
www.leonlevin.com



SAND ★  
(S50)

PANSY ★  
(758)

CARNATION  
(753) ★

SPRUCE ★  
(34P)

WEDGEWOOD  
(20P) ★

HARVEST ★  
YELLOW (33P)

CREAM  
(005)

RED  
(040)

BLACK  
(090)

BLUEBELL ★  
(755)

TOBACCO  
(31P) ★

APRICOT  
(20A) ★

WHITE  
(000)

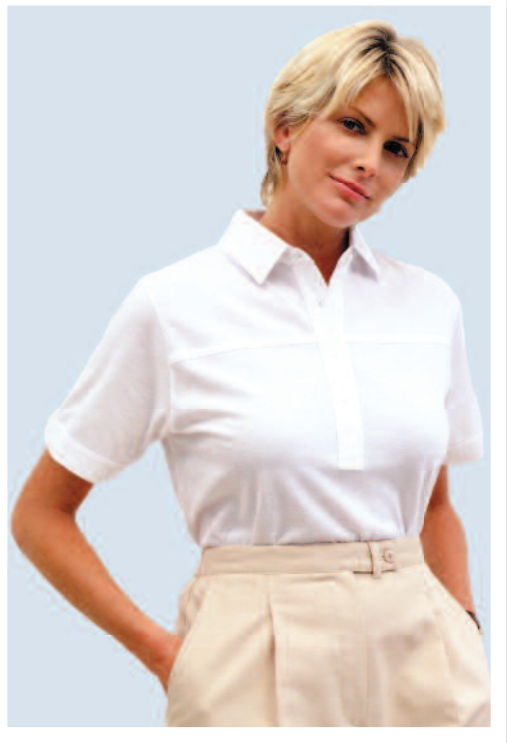
BRIGHT  
ADMIRAL  
(20C) ★

BERMUDA ★  
PINK (264)

SPEARMINT  
(751) ★

AMETHYST  
(36P) ★

INK  
(E76)



## Our *Original* Short Sleeve Polo

The tailored collar & placket are hallmarks of our polo. Classic lines and impeccable quality have stood the test of time. Made with our soft, easy care cotton blend jersey knit.

### REGULAR

STYLE  
103

SIZES  
S to XL

PRICE  
\$49.00

### PETITE ★

STYLE  
103P

SIZES  
PS to PXL

PRICE  
\$49.00



BLUEBELL  
(755)

SAND  
(S50)

TOBACCO  
(31P)

PANSY  
(758)

CARNATION  
(753)

APRICOT  
(20A)

SPRUCE  
(34P)

WHITE  
(000)

BRIGHT  
ADMIRAL  
(20C)

WEDGEWOOD  
(20P)

BERMUDA  
PINK (264)

HARVEST  
YELLOW( 33P)

**NO PETITES**

STYLE  
4418

SPEARMINT  
(751)

CREAM  
(005)

SIZES  
XS, S, M, L, XL

AMETHYST  
(36P)

RED  
(040)

PRICE  
\$79.00

INK  
(E76)

BLACK  
(090)

# Sand Dune

Soft, easy-to-wear sun-washed blues and sand are the perfect casual color combination no matter if you're running around town, or relaxing at home.

*Diandra is wearing*  
FLOWER  
SHOW  
(29A)



3/4 Sleeve



Short Sleeve



A  
SNOWBIRD  
Favorite!

Printed on our ultra soft 100% natural cotton jersey knit fabric. Select your favorite sleeve length. Easy care. Machine wash - hang dry.

	STYLE	SIZE	PRICE
Short Sleeve	103	S, M, L, XL	\$59.00
Short Sleeve Petite	103P	PS, PM, PL, PXL	\$59.00
3/4 Sleeve	102	S, M, L, XL	\$64.00



## FREE MATCHING PRINT MASK

will be included in your print order.



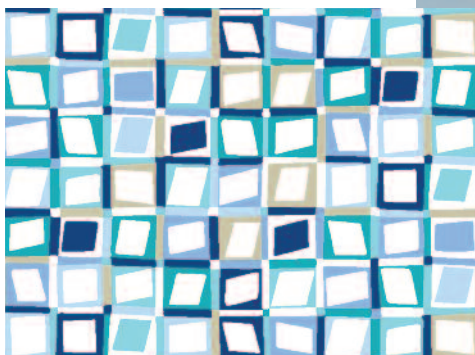
FLOWER SHOW (29A)



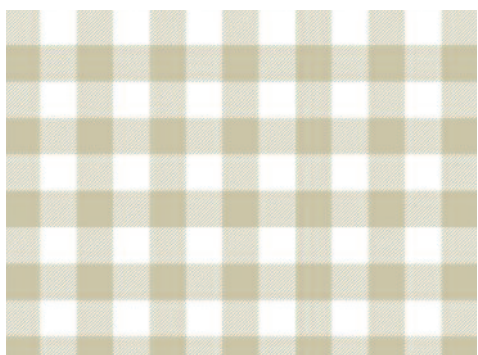
FRESH AS A DAISY (29B)



CRYSTAL LIGHT (29C)



ROLL THE DICE (29D)



CHECK-MATE (29E)



WHITE WASH (29F)



## Wear Everywhere Cardigan

Easy care, machine wash.

**MORE COLORS** on page 11

Style #	Sizes	Price
4418	XS, S, M, L, XL	\$79.00



★ SAND (S50)



★ WHITE (000)



★ INK (E76)



★ BLACK (090)



Easy-on Soft Elastic Waist

Stay Flat Side Pockets

# *Original* LEON LEVIN Easy Does It Pant

Tailored in our cotton blend twill fabric, this easy-on pant has soft elastic all-around the waist and on-seam pockets. Gently tapered leg.

	Style #	Size	Price
<b>REGULAR</b> (30" inseam)			
	L1026	6 to 18	\$69.00
<b>PETITE</b> ★ (28" inseam)			
	L1026P	6P to 18P	\$69.00



CRIMSON  
(30i)

INK  
(E76)

HARBORSIDE  
(30G)

MALACHITE  
(30J)

LEMONADE  
(509)

BLUE VIOLET  
(38P)

NIAGRA  
(32P)

CARNATION  
(753)

COZUMEL  
(29P)

VIOLET ROYALE  
(30H)

HYDRANGEA  
(30D)

ROSE  
(30F)

ROSEMARY  
(795)

## 3/4 Sleeve Polo

Perfect 3/4 sleeve length with tailored collar, placket and our distinct front welt seam.

**NO PETITES**

Style #	Sizes	Price
102	S, M, L, XL	\$54.00

60% cotton / 40% polyester knit  
Easy care - machine wash.

SHOP ONLINE: [leonlevin.com](http://leonlevin.com)

# Apricot Twist

Sand and Black  
neutrals with a  
T-W-I-S-T of

APRICOT

*Andie  
is wearing*  
RETRO  
CHIC  
(26D)



*3/4 Sleeve*



*Short Sleeve*

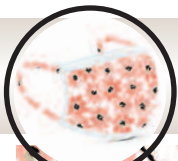


A  
SNOWBIRD  
*Favorite!*

Printed on our ultra soft 100% natural cotton jersey knit fabric.  
Select your favorite sleeve length. Easy care. Machine wash - hang dry.

	STYLE	SIZE	PRICE
Short Sleeve	103	S, M, L, XL	\$59.00
Short Sleeve Petite	103P	PS, PM, PL, PXL	\$59.00
3/4 Sleeve	102	S, M, L, XL	\$64.00

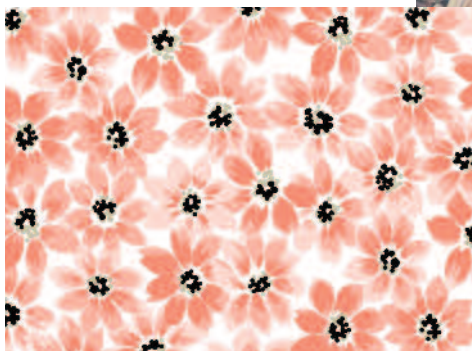




**FREE MATCHING MASK**  
will be included in your print order.



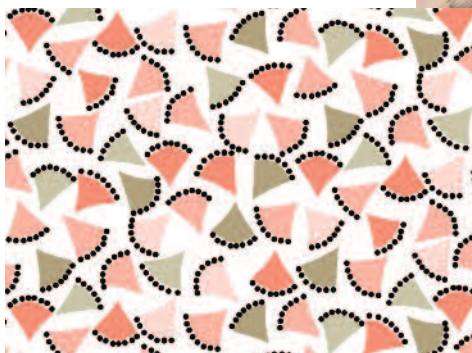
FLOWER SHOW (26A)



FRESH AS A DAISY (26B)



CRYSTAL LIGHT (26C)



RETRO CHIC (26D)



DOUBLE DIAMOND (26E)



DOUBLE DIAMOND (26F)



BLACK  
(090)

SAND  
(S50)

APRICOT  
(20A)

WHITE  
(000)

## Wear Everywhere Cardigan

Easy care, machine wash.

**MORE COLORS** on page 11

Style #	Sizes	Price
4418	XS, S, M, L, XL	\$79.00

BERMUDA PINK  
(264)

BORDEAUX  
(20L)

BLUEBELL  
(755)

SPEARMINT  
(751)

CARNATION  
(753)

LEMONADE  
(509)

BRIGHT TEAL  
(20E)

DUSTY ROSE  
(20K)

SAND  
(S50)

PANSY  
(758)

SPRUCE  
(34P)

# PETITE PERFECT

Our CLASSIC  
SHORT Sleeve Polo  
in PETITE Sizes

## 11 colors



## SHORT SLEEVE PETITE

We specially adjusted our short sleeve polo a bit shorter in length to better fit our petite gal.

STYLE	SIZES	PRICE
103P	PS to PXL	\$49.00

60% cotton / 40% polyester knit  
Easy care - machine wash.

CALL: 1.866.937.5366  
[www.leonlevin.com](http://www.leonlevin.com)



BLUEBELL  
(755)



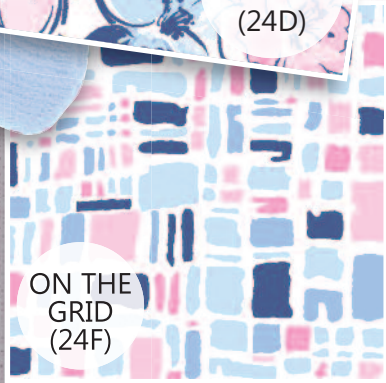
BERMUDA  
PINK  
(264)



FRESH  
DAISY  
(24E)



VICTORY  
GARDEN  
(24D)



ON THE  
GRID  
(24F)

## CRUISE CONTROL

Soft, sophisticated, confident and in control ~ **LEON LEVIN** will get you ready for anything! Perfectly matched to our boucle cardigan. Easy care 100% cotton polos ~ Machine wash - hang dry.

### REGULAR SIZES

	STYLE	SIZES
Short Sleeve	103	S to XL
3/4 Sleeve	102	S to XL
Long Sleeve	105	S to XL
Cardigan	4418	XS to XL

### PETITE SIZES

STYLE	SIZES	PRICE
103P	PS to PXL	\$59.00
		\$64.00
105P	PS to PXL	\$64.00
		\$79.00

more colors on page 11

**LEON LEVIN**  
30 Corporate Park, #240  
Pembroke, MA 02359

PRSRT STD  
U.S. POSTAGE  
**PAID**  
Norwood, MA  
PERMIT #20



# PETITE PERFECT

Our CLASSIC  
Long Sleeve Polo  
in PETITE Sizes

We specially adjusted our  
long sleeve polo to fit our  
petite size customers.

## 11 colors

STYLE	SIZES	PRICE
105P	PS to PXL	\$54.00

60 cotton / 40 polyester knit  
Easy care - machine wash.



**LET'S GET SOCIAL!!!**



**INSTAGRAM**  
@SHOPLEONLEVIN



**FACEBOOK**  
@LEONLEVINSHOP

We're here to help  
give us a CALL:  
**1.866.937.5366**  
Mon. thru Fri.  
9 a.m. to 5 p.m. EST



Wrap It  
for  
**\$9.95**

RED  
(040)

SUNDANCE  
(30B)

PARADISE GREEN  
(265)

WATERMELON  
(30C)

BLUSH  
(30E)

BAJA BLUE  
(Q63)

TURQUOISE  
(25P)

PANSY  
(758)

SPEARMINT  
(751)

MALACHITE  
(30J)

INK  
(E76)