

Northwestern
ALUMNI ASSOCIATION

JULY 20-25, 2026

PACIFIC NORTHWEST DISCOVERY

Orbridge

THE SAN JUAN ISLANDS, WHALES,
WILDLIFE AND COASTAL CULTURE

Northwestern ALUMNI ASSOCIATION

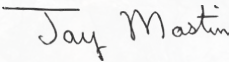
Dear Northwestern University alumni and friends,

Join fellow Wildcat explorers on a memorable journey to the San Juan Islands, one of North America's most spectacular marine ecosystems, located off the coast of Washington State.

From the rugged coastlines of remote islands to the tranquil beauty of old-growth forests, each day unfolds with extraordinary wildlife encounters, breathtaking landscapes, and unique cultural discoveries. Culinary excursions include local wines and fresh-from-the-water seafood. A visit to Orcas Island puts you in proximity to these sleek black-and-white sea mammals.

Come experience the raw beauty of the Pacific Northwest. Space is limited for this exclusive, small-group program. Make your reservation today, while early-booking savings of more than \$1,000 per couple are still available. Reserve online at northwestern.orbridge.com or call 866-639-0079.

Sincerely,



Jay Mastin '10 MS
Director, Alumni Engagement
Northwestern Alumni Association
alumni.northwestern.edu/travel
giving.nu/NAA-Travel



JULY 20-25, 2026

RESERVE YOUR SPACE TODAY


Online: northwestern.orbridge.com • Phone: 866-639-0079

Category	Standard Rate	Special Rate*
Double	\$6,399	\$5,895
Single	\$8,299	\$7,795
Optional Excursion	Rate Per Person	
Kayaking	\$149	

DEPOSIT AMOUNT PER PERSON: \$850

*Special group rates; limited offer. All rates are per person in U.S. dollars based on double occupancy except where noted as Single. Single availability limited. Unless noted otherwise, airfare is not included. **An exclusive Early Booking Bonus, Expedition Libraries are curated collections of useful resources and background reading tailored to this program. Place your deposit on or before the specified date, and one Expedition Library per room will be sent after receipt of final payment. Libraries may be purchased; call for details. Full Terms & Conditions at terms.orbridge.com. Any payment to Orbridge, LLC constitutes your acceptance of the terms and conditions set out therein, including but not limited to the cancellation and refund terms.

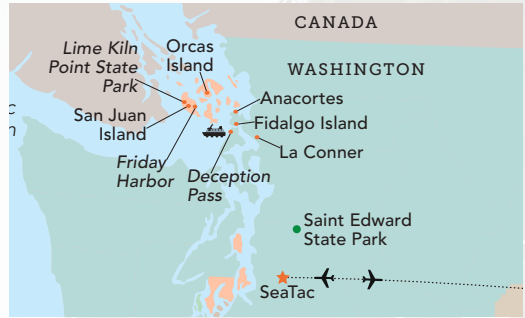
CST#2098750-40 WST#602828994

 Orbridge takes seriously the responsibility to minimize our global environmental impact. Each year we plant 100,000 trees in U.S. State Forests with afforestation needs as an ongoing initiative among our evolving sustainability efforts. Learn more at orbridge.com/going-green.



Pacific Northwest Discovery | Itinerary Highlights *(subject to change)*

Day 1 **ARRIVE IN SEATAC, WA | SAINT EDWARD STATE PARK (KENMORE) (R,D)** Upon arrival an Orbridge representative will be waiting to assist with your transfer to the property. Take time to unwind and explore the lodge's serene walking trails. Later gather with fellow travel companions for a special welcome reception featuring a local guest speaker and cultural historian followed by dinner.
Overnight: The Lodge at St. Edward Park



Day 2 **LA CONNER | SOUTHERN SAN JUAN ISLANDS CRUISING | FRIDAY HARBOR (B,L,D)** Depart by private transportation for the scenic drive to La Conner, a charming waterfront town on the Salish Sea. From there, embark upon a touring vessel destined for the San Juan archipelago highlighted with a wine tasting of the region's varietals and delicious crab lunch plus prime wildlife spotting opportunities. Arriving at Friday Harbor, check into your charming boutique hotel, your home away from home for the next three evenings. Meet with a local Orca researcher to learn about the resident and transient Orca populations. Gain insight into why the resident pods are critically endangered and learn about conservation research and efforts currently underway in the San Juan Islands. Take time to settle in and refresh before rejoining the group for dinner which will be at a local restaurant.
Overnight: Earthbox Inn & Spa

Day 4 **SAN JUAN ISLAND TOURING (B,L,D)** Visit American Camp located on the southern end of San Juan Island where U.S. troops were stationed during the Pig War. Continue to Lime Kiln Point State Park—one of the best places to spot orcas from land. Lunch is a special treat set against a stunning waterfront backdrop. Be seated at Westcott Shellfish Company for a Tide Table Lunch featuring fresh oysters, clams and mussels. Before returning to Friday Harbor, visit Roche Harbor where you'll learn about the lime kilns followed by leisure time to explore the harbor and local shops independently. This evening there is an opportunity to join an optional 3-hour kayak tour *(additional fee)*.
Overnight: Earthbox Inn & Spa

Day 3 **ORCAS ISLAND • SUCIA ISLAND (B,L,D)** Cruise to Orcas Island with opportunities to encounter the region's incredible marine wildlife. Birdwatchers keep alert for the puffins, cormorants and great blue herons who call this marine paradise home. Visit Moran State Park, the crown jewel of Orcas Island, encompassing more than 5,200 acres of forest, lakes and waterfalls. Continue to Sucia Island, one of the most geologically fascinating islands in the San Juan archipelago. This remote, pristine island is a designated Washington State Marine Park known for unique sandstone formations and fossilized sea creatures embedded in the rocky cliffs. Gain insight into the area's profound history followed by leisure time to explore independently and a picnic lunch. Enjoy the relaxing return journey to Friday Harbor followed by dinner at a local restaurant.
Overnight: Earthbox Inn & Spa

Day 5 **FRIDAY HARBOR | DECEPTION PASS | ANACORTES (B,L,D)** Visit The Whale Museum for a docent-led tour. Continue to the northern end of San Juan Island to see English Camp—a striking contrast to American Camp. Next visit a working farm on the island for a farm-to-table lunch. Later continue by boat to Anacortes, cruising by Deception Pass, one of Washington's most iconic natural landmarks. This evening gather together for a farewell dinner on a rooftop terrace to celebrate your adventures in the Pacific Northwest.
Overnight: Majestic Inn & Spa

Day 6 **ANACORTES | DECEPTION PASS STATE PARK | SEATAC | DEPART SEATAC (B)** After breakfast visit Deception Pass State Park—more than 4,000 acres of protected forests, beaches and scenic trails. The park offers plenty of opportunities to explore, hike and spot for wildlife. Later transfer to Seattle-Tacoma International Airport for flights home.

(B = Breakfast, L = Lunch, D = Dinner, R = Reception)

What's Included

- 5 nights accommodations in distinguished properties
- A special welcome reception, 5 breakfasts, 4 lunches (including a picnic-style lunch) and 5 dinners
- Full guiding services of an Orbridge Expedition Leader as well as expert local guides
- All excursions listed on the 6-day itinerary including admission
- Private deluxe motor coach with air conditioning and comfortable seating
- Luggage portage
- Gratuities to Orbridge Expedition Leader, local guides, drivers, porters and wait staff for included meals
- Group airport transfers for guests arriving and departing during the suggested times



Activity Level: This program offers a variety of activities, typically not strenuous for guests with average mobility, including skiff rides, hiking and kayaking. Walks and hikes are at a leisurely pace in order to see and learn as much as possible about the region. It's our expectation that guests are able to walk with good balance, and go up and down stairs easily without assistance.



Orbridge

Orbridge Standard of Excellence

Orbridge understands travel today can be complicated. From cabin or room selection to airport transfers, dietary requests, or pre- or post-tour details—we are dedicated to making your journey seamless and special from the moment you leave home.

Our curated destinations—featuring outstanding properties and ships, meticulously crafted itineraries, and knowledgeable guides, travel directors and expedition leaders—offer life-changing experiences you'll never forget.

Our Guest Services team is staffed by well-traveled professionals who provide personalized attention, ensuring all your questions are answered and all the details of your trip are explained to you.

Our air partners can make flight arrangements for guests. In the event of flight delays and/or schedule changes, they will provide guests with personalized assistance. To book flight reservations with our air partners, contact (206) 319-5011 and select the option for your destination to discuss flight details with our air colleagues. Upon ticketing, a fee will be charged.

Accommodations *(subject to change)*

THE LODGE AT ST. EDWARD PARK

Operating as a seminary from 1931 to 1976, this beautifully restored retreat offers refined accommodations, an award-winning spa and an atmosphere of quiet sophistication.



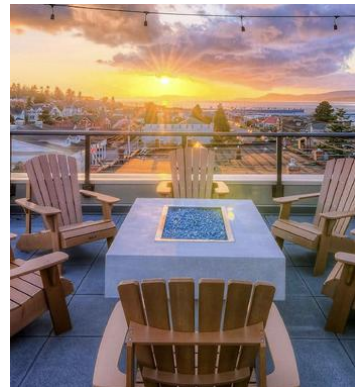
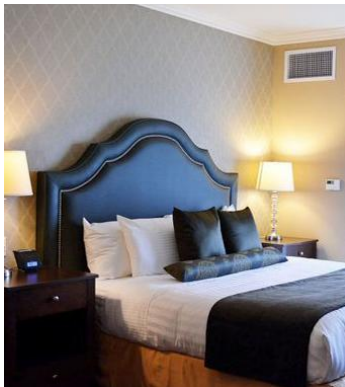
EARTHBOX INN & SPA

Designed to embrace the laid-back spirit of the San Juan Islands, the hotel blends modern comforts with a coastal atmosphere. During leisure time take advantage of the heated indoor pool and spa or the dry sauna.



MAJESTIC INN & SPA

This beautifully restored boutique hotel features elegant accommodations and a lovely rooftop terrace with stunning views of the San Juan Islands.



Northwestern ALUMNI ASSOCIATION

NAA Travel Program
Northwestern University
Alumni Relations and Development
1201 Davis Street
Evanston, IL 60208-4410

Whether or not you travel with the NAA, you can have an impact on the world by making a gift to Northwestern. From study-abroad opportunities for students to the University's groundbreaking global research, your support is invaluable. Make your gift today at giving.northwestern.edu/travel.

University Travel Disclaimer

The University is not the tour operator. The University acts merely as an agent for the supplier by selling travel-related services, accepting reservations, and booking for services that are not directly supplied by the University. The University, therefore, shall not be responsible for breach of contract; failure to comply with any state or federal laws, including the Americans with Disabilities Act; or any intentional or negligent actions or omissions on the part of such suppliers that may result in any loss, damage, delay, inconvenience, or injury to travelers, travelers' companions, or group members. To review the University disclaimer in detail, visit alumni.northwestern.edu/universitydisclaimer.

PACIFIC NORTHWEST DISCOVERY

JULY 20-25, 2026

Special Alumni Rate:

Save more than **\$1,000** per couple

30-DAY REFUND GUARANTEE

FREE EXPEDITION LIBRARY
AN EXCLUSIVE EARLY
RESERVATION BONUS

Reserve by
April 3, 2026**

PRSRT STD
U.S. POSTAGE
PAID
PERMIT NO. 825
SAN DIEGO, CA