

# KWARIZMI PROFILE 2020-2021



**KWARIZMI**

ENGINEERING SYSTEMS & CONTROLS CO. W.L.L

*Life safety , Security  
and Smart Solutions*

*Driven by quality.*

---

<https://www.kh-controls.com/>

# Providing Life Safety and Security Systems



Fire Fighting



Fire Protection Signs



Sound Systems



Conference Systems



Access Control



Fire Command Control Room



PA/VA Systems



Smoke Override Systems



Video Systems



Fire Alarm



Hotel Management System



Gas Detection System



Intrusion Alarm



Home Automation



# ABOUT US

Kwarizmi Engineering Systems & Controls provides leading safety equipment and security systems tailored with superior technical support, consultation and design to ensure our customer's ultimate satisfaction and peace of mind.

Our security solutions combine surveillance technologies and best-in-breed security. Through our expertise in service and support we guarantee our clients to always meet their unique demands. Our involvement in the project is vast and includes the design of systems, location of equipment and their environmental and aesthetic impact, all to comply with the project's requirements and specs.



Offices



Storages



# OUR VISION

Our vision is to be the leading provider of fire safety and security systems in the local region through building TRUST in our relationship with clients, authors, and the community.

## OUR MISSION

“Let’s think Safety”

Kwarizmi Engineering Systems is dedicated to provide high-quality safety and security solutions for clients who are looking for a safe environment at home and work. Our mission is to strengthen the safety concept all areas of life.



# What we do



Kwarizmi Engineering Systems & Controls is a specialized company providing life safety and security systems. We deliver engineering, material supply, installation, testing & commissioning, integration, maintenance and after sale services

We make the following activities available

- Evaluating and analyzing Potential Threats and Vulnerabilities
- Designing a Safety and Security Systems to Mitigate Risks
- Conducting Risk Assessments
- Brainstorming Plans for handling the identified Risks
- Operational Security Planning & Implementation

## OUR SERVICES

Kwarizmi Engineering Systems & Controls Project proposes a full range of security solutions which includes:

**Maintenance and After Sale Service**

**Installation**

**System Integration (SI)**

**Material Supply**

**Testing and Commissioning**

**Engineering**

# OUR SERVICES

Our competitiveness stems from our streamlined management and communication structure, extensive field experience, human resource pool, the capacity of reason and adaptation, international and local staff, as well as local competence, partnerships, and training.

Our services include:

01

## Engineering

Kwarizmi Engineering Systems & Controls Co. W.L.L. provides clients with the engineering needs to build up their systems and select the appropriate system components to comply with their project requirements, specifications, standards, codes, and local authority regulation.

02

## Material Supply

We deliver suitably selected components/material that conform to the project requirements, specifications, standards, codes, and local authority regulation, as it is the base of a reliable and healthy system.

03

## Installation

We ensure all technical installations are connected, set in position and prepared for use according to the designed projects, local authority regulations, and client requirements.





## OUR SERVICES

Our competitiveness stems from our streamlined management and communication structure, extensive field experience, human resource pool, the capacity of reason and adaptation, international and local staff, as well as local competence, partnerships, and training.

Our services include:

04

### Testing and Commissioning

At Kwarizmi Engineering Systems & Controls, we make sure all systems and components of a building or industrial plant are designed, installed, tested, operated, and maintained under the operational requirement of the owner/ client.

05

### System Integration

This is an IT or engineering process or phase that is concerned with joining different component or subsystems as one large system. Kwarizmi Engineering Systems & Controls ensure the functions of each integrated subsystem as required. Through new functionalities provided by connecting features of different systems.

06

### Maintenance and After Sale Services

Electrical equipment failures account for millions of dollars in damage and loss in business every year. Kwarizmi Engineering Systems are taking active steps to counter the trend, and a large number of electrical system failures will be avoided by our routine preventive maintenance program.



## OUR TEAM

Our team has more than 10 years of experience providing electrical low current systems, fire fighting systems and automation systems. Amongst the projects were small and large utilities in the Gulf area as well as local markets, residential places, hotels, commercial, industrial, governmental, educational, and sports utilities.



01

### Design Team

Our design team is equipped with solid knowledge and expertise that allows them to study customer's project's needs and utilise the best products and system design accordingly. The attention to detail and thoroughness in the design phase ensure easy and hassle free implementation.

02

### Site Team

Our site team's input on the projects is technical, organisational and supervisory. They set out and determine the location for installations, and will apply designs and plans on site. Their responsibility includes site security, health and safety and the organisation and supervision of material and human resources.

03

### Sales Team

Our sales department is the direct link between our company's product or service and its customers. Our sales staff are trained to build quality relationships with our customers. Further, they help identify a customer's unique needs and makes sure that those needs are met.





# PRODUCT PROFILE 2020-2021



**KWARIZMI**

ENGINEERING SYSTEMS & CONTROLS CO. W.L.L



**BOSCH**

*Driven by quality.*

<https://www.kh-controls.com/>

# OUR PRODUCTS



# BOSCH

Invented for life

A sneak preview of our latest products, technologies and solutions

[www.boschsecurity.com](http://www.boschsecurity.com)

Product Profile

## PLENA Public Address Easy Line

*All about versatility, reliability, and ease of use*

PLENA Public Address Easy Line is an intelligent plug-and-play solution for quality music and outstanding speech intelligibility thanks to one-zone or two-zone options. The system can be tailored to any small-to-midsized location depending on sound system requirements and voice announcement capabilities. Easy expandability with low-overhead cost guarantees that the system will be used for years to come.

### Products



Mixer Amplifier  
60W/120W



All in One Mixer  
Amplifier



All-in-One  
Wall Panel



6 Zone Call  
Station

### Applications



Residential



Retail



Restaurant



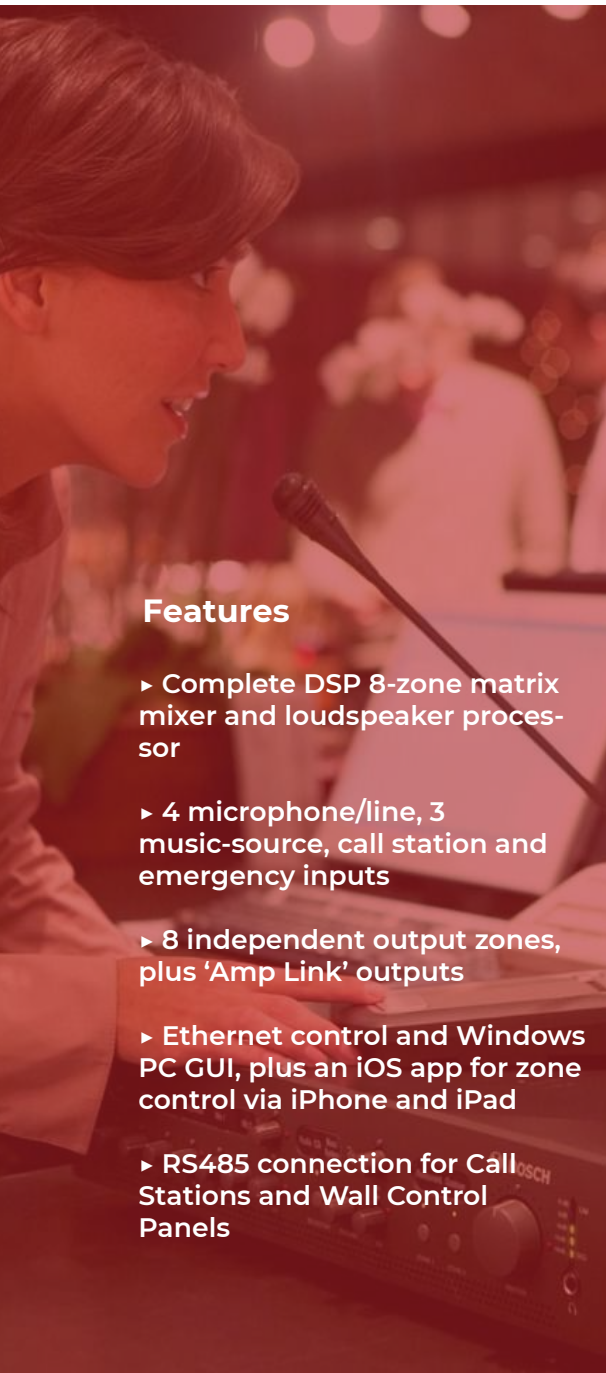
School



Offices

### Features

- ▶ All-in-One solution for background music and paging
- ▶ Six-zone paging system
- ▶ Built-in AM/FM tuner with presets
- ▶ MP3 player for USB device and SD card
- ▶ Optional Call Station and Wall Panel with local audio source and remote control



### Features

- ▶ Complete DSP 8-zone matrix mixer and loudspeaker processor
- ▶ 4 microphone/line, 3 music-source, call station and emergency inputs
- ▶ 8 independent output zones, plus 'Amp Link' outputs
- ▶ Ethernet control and Windows PC GUI, plus an iOS app for zone control via iPhone and iPad
- ▶ RS485 connection for Call Stations and Wall Control Panels

# Public Address



## PLENA matrix Digital Sound System

*Surprisingly flexible. Powerful control.*

Flexible and powerful, the PLENA matrix is all about superior audio performance in an easy-to-use contemporary package. Users will appreciate the powerful, wireless control capabilities of the PLENA matrix System, and be surprised at its flexibility across vertical applications such as gyms, small hotels, restaurants, retail spaces, cafés, schools, recreational and sports facilities. Whether it is background or foreground music or clear voice announcement services, the PLENA matrix has every angle covered.

### Products



Matrix 8 Channel



DSP Amplifiers



Wall Control Panel



8 Zone Call Station

### Applications



Residential



Fitness Center



Sports Field



Show Room



Restaurant



School



Theater / Party Halls



Cinema



**BOSCH**

Invented for life

## Bosch Security and Safety Systems

Bosch empowers you to build a safer,  
more secure and enjoyable world

## Why choose Bosch?

- ☒ **Expertise and outstanding quality in PA/VA**  
we enable target groups to forecast challenging situations and user needs
- ☒ **Wide and resilient portfolio**  
we design public address solutions that give a good conscience and contribute to a better world
- ☒ **Intelligent public address technology**  
we deliver IP-based technologies that create a fascinating experience in public and commercial spaces
- ☒ **Global partnerships and closeness to customers**  
we inspire and support our customers to shape their future

## #AlwaysAhead

We strive to anticipate our customer needs by always being one step ahead, contribute to a better world through sustainable solutions and create value-adding ideas that fascinate our customers.

# Industry-leading public address and voice alarm solutions

## Portfolio overview

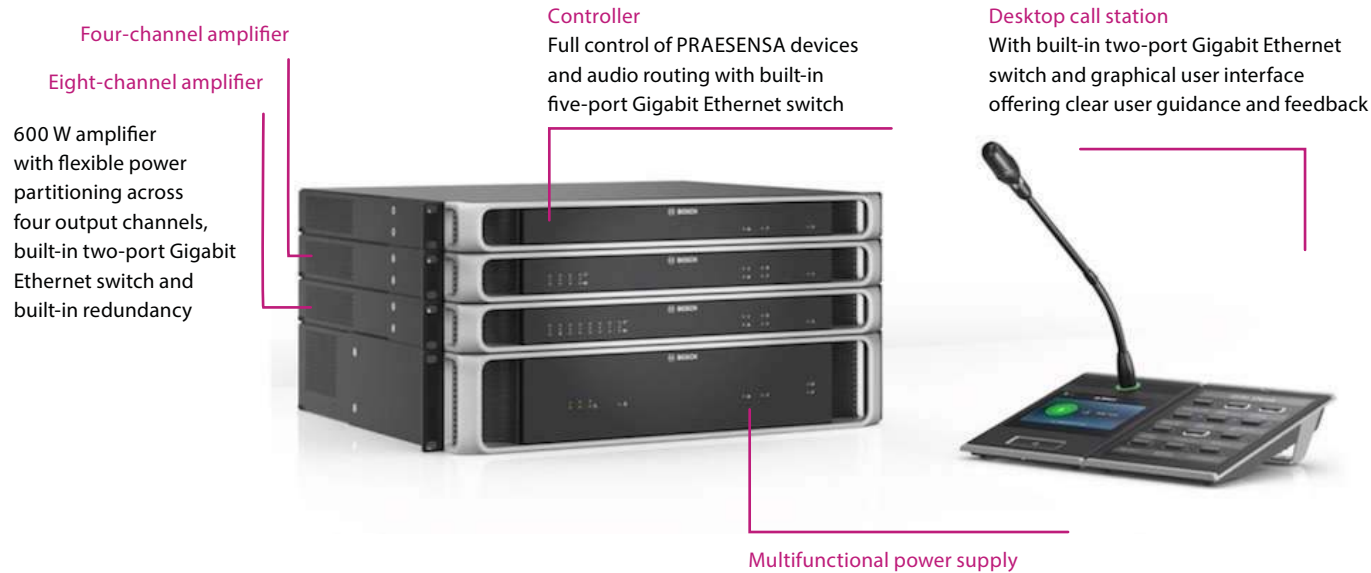
All Bosch voice alarm systems are

**EN54-16** EVAC Certified  
Emergency  
Voice Alarm

## PRAESENSA Public Address and Voice Alarm System

*IP-connected and fully-featured*

PRAESENSA sets a new industry benchmark for mid-to-large applications. It is an advanced and extremely cost-efficient IP-connected system, using a smart-power concept and integrated redundancies, making it perfect for both centralized and decentralized topologies.



### Applications



Hotels



Towers



Airports



Stadiums



Hospitals

Ideal for mid-to-large (multi-site) application areas where complete flexibility and scalability is required



## PRAESENSA

- ☒ All components of the system are IP-networked for highest flexibility and scalability
- ☒ Innovative amplifier architecture allocates power intelligently, increasing efficiency and lowering cost of ownership
- ☒ No single point of failure and built-in redundancy are at the core of the system concept
- ☒ User-centric design delivers an intuitive interface with feedback on progress and status
- ☒ Comprehensive system adapts to changing needs

Ideal for mid-to-large application areas where scalability is required



# Public Address



## PRAESIDEO Digital Public Address and Voice Alarm System

With over 20.000 installed systems worldwide, PRAESIDEO is the most established solution for demanding public address and emergency voice evacuation applications. Superb sound quality, operational versatility and a program of continuous enhancements ensure PRAESIDEO leads the market.

**Network controller**  
Control and routing of 28 simultaneous audio channels

**Multi-channel interface**  
Interface to PRAESIDEO basic amplifiers

1 x 500 W, 2 x 250 W, 4 x 125 W and 8 x 60 W basic amplifiers  
High efficiency class-D amplifier channels

**PC call server/client**  
This software serves multiple call station clients and/or telephone interface clients. It controls user access with selectable rights per user

1 x 500 W, 2 x 250 W, 4 x 125 W and 8 x 60 W power amplifiers  
With DSP, amplifier supervision, spare amplifier switching, loudspeaker line and loudspeaker supervision



**Remote call station**  
Connects to the call station interface via CAT-5 cable

**Call station keypad**  
Eight freely programmable selection keys

**Call station numeric keypad**  
With zone selection, user access and LCD for user feedback

### Applications



Hospitals



Malls



Hotels



Airports



Stadiums

## PRAESIDEO

- ☑ Leadership in performance and reliability due to system maturity and full supervision
- ☑ Redundancy and automatic switching guarantee uninterrupted operation
- ☑ Optical fiber connections with daisy chain principle ensuring quality-of-communication and ease-of-installation
- ☑ Wide range of amplifiers differing in amount of power, number of channels and DSP features



## PAVIRO Public Address and Voice Evacuation System with Professional Sound Quality

### *Flexibility right from the start*

PAVIRO is a unique, high-quality Public Address and EN54 certified Voice Evacuation System that seamlessly integrates with additional equipment to deliver high-quality music. Thanks to its powerful range of features, PAVIRO not only answers an extremely wide variety of application requirements, it also delivers best-in-class performance in quality, ease of installation, and versatility.

#### Call station and call station extension

Soft touch selection buttons and 35 free programmable function keys (15 on the call station and 20 on the call station extension)



Controller with DSP for single and networked applications  
Control and routing of four simultaneous audio channels

24-zone router with four channels  
Zone extension for the PAVIRO system.  
One router can handle up to 4,000 W speaker load. The maximum load of one is 500 W

Two-channel amplifier  
2 x 500 W class-D power amplifier (70/100 V output)

### Applications



Malls



Hotels



Universities

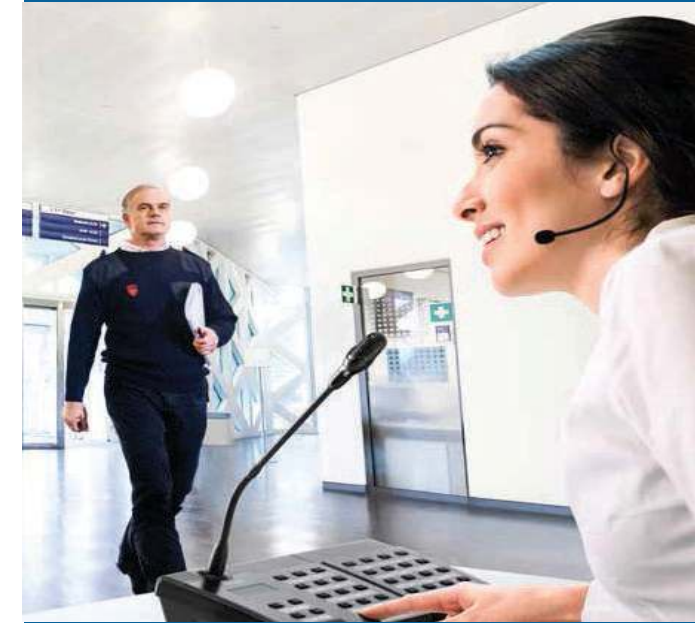


Commercial Buildings



Towers

Ideal for small-to-mid-sized (multi-site) application areas where flexibility and professional sound quality is required



## PAVIRO

- ☒ The system can accept architecture changes at any stage during installation and provide a wide range of announcement/music combinations
- ☒ Lowest power consumption of any system in this class
- ☒ Fast, easy and complete set-up with both "Basic" and "Expert" configurations
- ☒ Zone monitoring on the call station

Ideal for most basic small-to-mid-sized application areas



## PLENA VAS

- ☑ Compact system which can be expanded to a medium-sized system
- ☑ Standalone and plug-and-play concept for most basic applications
- ☑ Smart configuration via DIP-switches, laptop or PC

# Public Address



## PLENA VAS - Public Adress & Voice Alarm System

The PLENA Public Address and Voice Alarm System is designed to be an easy-to-use announcement and emergency sound solution. The system features a standalone and plug-and-play concept ideal for entry applications. The system can also include a specially designed fireman's panel.



**Dynamic emergency microphone**  
Rugged construction with excellent speech reproduction for close-talking applications

**Router**  
Expands the system by six zones

**Controller with or without built-in amplifier**  
The heart of the PLENA VAS with full supervision of up to 120 zones and eight call stations

**Dynamic emergency microphone**  
Rugged construction with excellent speech reproduction for close-talking applications

## Applications



Hospitals



Malls



Commercial Buildings



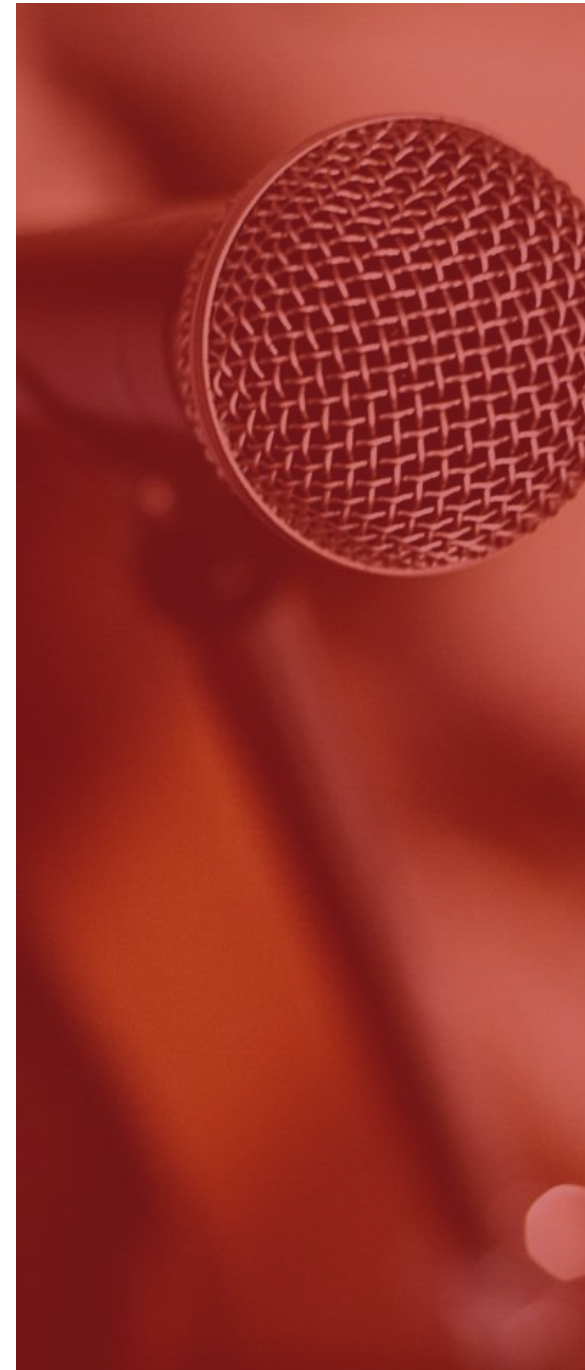
Universities



Museums



Hotels



## Microphones and Audio Sources

With the unidirectional microphone, Bosch provides impressive audio performance at an economical price. It is based on a dynamic transducer element that is designed for high speech intelligibility. Its rugged enclosure is both stylish and easy to use in a wide range of public and sound reinforcement applications. The wireless microphone receiver is part of the Bosch wireless microphone system. This system is designed for public address in churches, restaurants, conference centers, hotels, shops and many other applications.

### Products

---



Wired Microphones



Wireless Microphones Receiver



Handheld Wireless Microphones



Belt-Pack Wireless Microphones



Accessories



Volume Controllers



Audio Source

### Applications



All Applications Possible

# Conference Systems



## Conference / Meeting Solutions

*World-class solutions for meetings and conferences*

Bosch conference solutions are used by all kinds of customers, ranging from small-sized organizations to multinational corporations, as well as local, regional and national governments and international summits.



## Conference Systems by Bosch

Innovative amplifier architecture allocates power intelligently, increasing efficiency and lowering cost of ownership

No single point of failure and built-in redundancy are at the core of the system concept

User-centric design delivers an intuitive interface with feedback on progress and status

Comprehensive system adapts to changing needs



*Wireless Discussion System*

*Wired Discussion System*

## Wall Speakers

Our loudspeakers provide an overall lower cost of ownership. All of its acoustical products meet, or exceed, international standards.

## Products



Wall 60W



Wall 15W



Wall 30W



Wall Speaker System  
Subwoofer "Theater"



Column 5/10/20W



Column 3/6/12/24W



Column 15/30/60W



## Legend



= Metal



= ABS



= EN 54-24 certified  
A = indoor



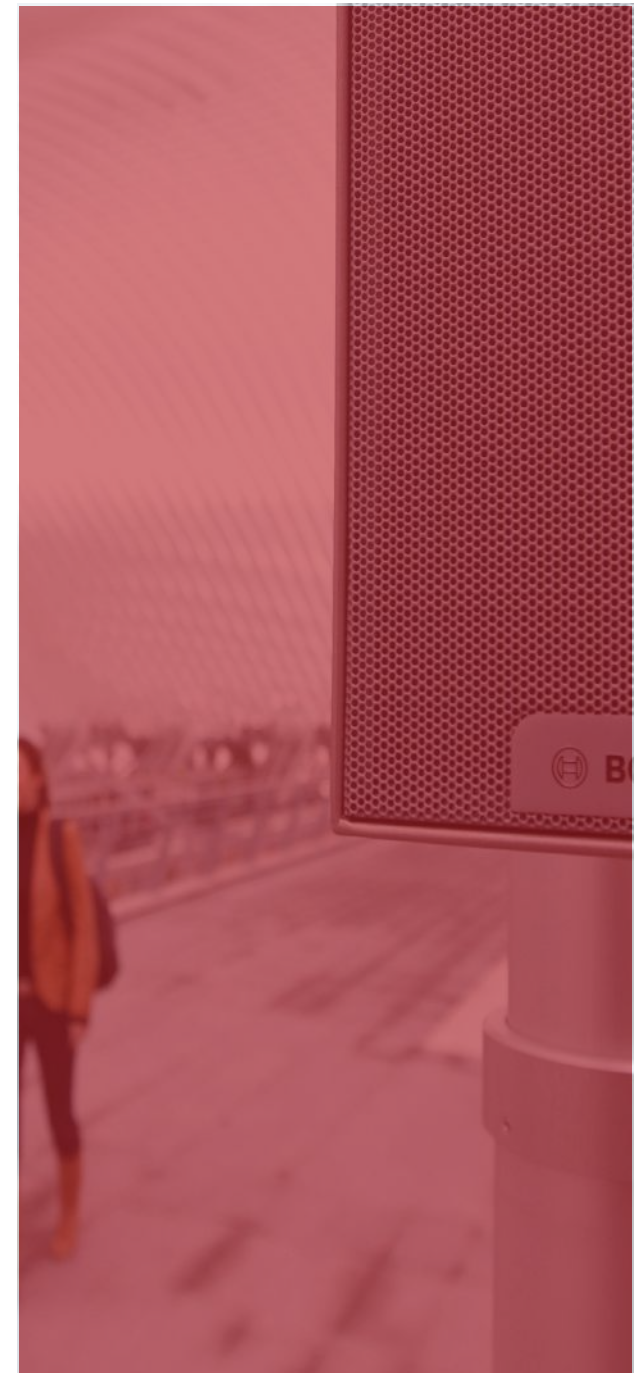
= Suitable for music



= Outdoor



= MDF



# Loudspeakers



## Sound Projector Speakers

Our loudspeakers provide an overall lower cost of ownership. All of its acoustical products meet, or exceed, international standards.

### Sound Projector Speakers



Wall/ Ceiling 16W



Wall/ Ceiling 10W



Wall/ Ceiling 20W



### Pendant Speakers



Pendant 16W



Pendant 20W



### Legend



= ABS



= EN 54-24 certified  
B = outdoor



= EN 54-24 certified  
A = indoor



= Suitable for music

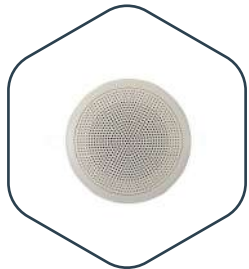


= Outdoor

## Ceiling Speakers

Our loudspeakers provide an overall lower cost of ownership. All of its acoustical products meet, or exceed, international standards.

### Products



Ceiling 6W



Ceiling 6W



Ceiling 6W



Ceiling 6W



Ceiling 30W



Ceiling 60W



Ceiling Speakers System  
Subwoofer "Theater"



### Legend



= Metal



= ABS



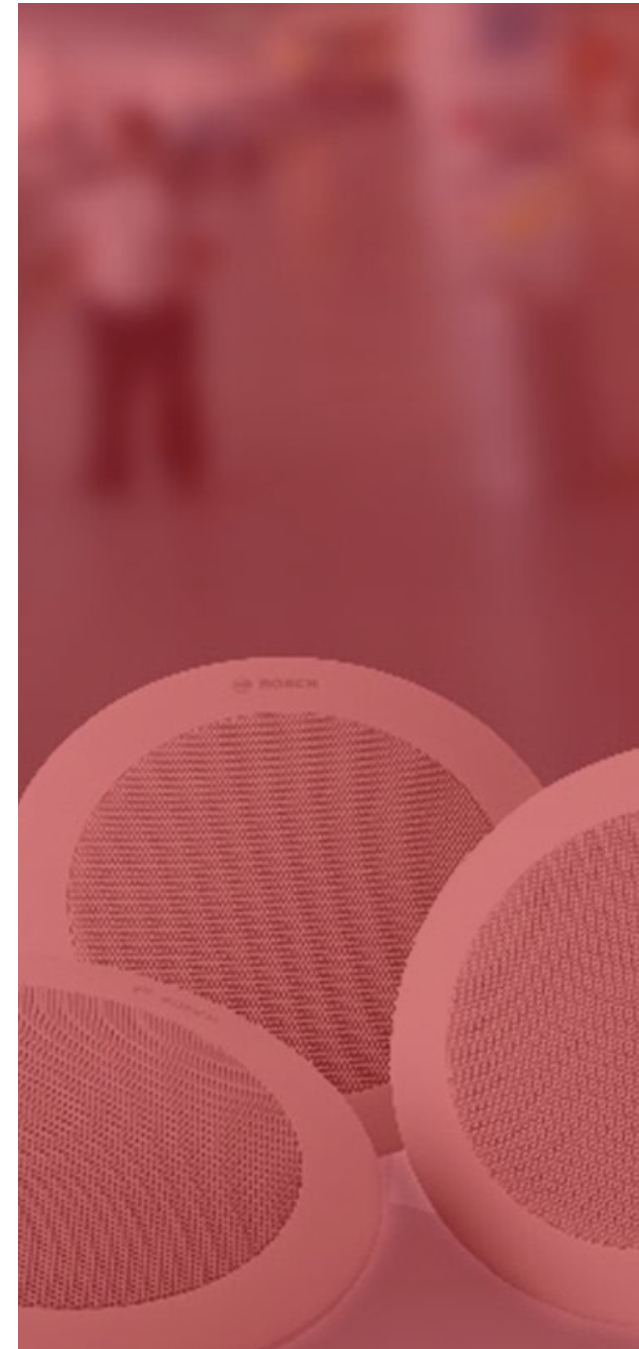
= EN 54-24 certified  
A = indoor



= Suitable for music



= EN 54-24 certified  
B = outdoor



# Loudspeakers



## Horn Speakers

Our loudspeakers provide an overall lower cost of ownership.  
All of its acoustical products meet, or exceed, international standards.

### Products



Horn 10W



Horn 25W



Horn 35W



Horn 50W



### Legend



= Metal



= EN 54-24 certified  
B = outdoor



= Outdoor





# BOSCH

## Intrusion Alarm Systems

**Security you can trust. Detection you can depend on.**

Protect people and property with security you can rely on. From simple installations to extensive projects, we offer integrated security solutions based on award-winning technology and backed by superior support.



Our easy-to-use alarm systems integrate seamlessly with video cameras, smoke alarms, home automation devices, and more. We offer customizable solutions to address the challenges you face every day.

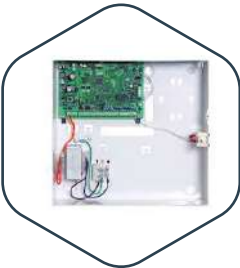
# Intrusion Alarm Systems



Security you can trust. Detection you can depend on.

Our control panels are modern Internet appliances designed to easily integrate with access control, fire, home and building automation, IP video, and more. You will get complete peace of mind with only one system to learn, use and maintain. Plus, a single system lowers installation and maintenance costs, while enabling more robust security by intelligently linking each security and life safety domain.

## Products



Control Panels



KeyPads



Motion Detectors



Dialer Devices



Break Glass



Panic Button



Door Contact



Mobile App





# Access Control System



Access Control Systems

Reliable and flexible solutions for any project

# Access Control System



Maximize openness, availability and scalability

The Bosch access control components offer you a perfectly flexible system for medium to large sized projects. Thanks to the scalability of the hardware components – Access Modular Controllers, readers and credentials – the system grows according to your security needs. Start out with Access Professional Edition (APE) software for medium sized projects and switch later to BIS Access Engine (ACE) when your security requirements grow, the hardware stays the same.

## Products



Proximity Readers



Smart Card Readers



Biometric Reader



Credentials



AMC Controllers



Accessories





**BOSCH**

Invented for life

Highest quality of  
relevant images  
See every detail, everywhere



***Rethink video security***

***Dedicated to innovate security where you need it most***

**“We constantly push the boundaries of technology to develop intelligent solutions that go beyond the highest security demands of today and deliver clear business advantages beyond security.**

**We believe that the logical next-step for security is to enable customers to interpret the data to start repurposing these huge amounts of video data. The ability to interpret video data directly at the source helps to substantially improve levels of security, as well as offering clear business advantages.”**

# Video Systems

*Bosch offers a wide range of video security cameras, recording solutions and software to deliver intelligent solutions that deliver smart data that helps to improve safety, increase efficiency and reduce costs.*

## IP 3000i cameras

IP 3000i security solutions offer all the core advantages you would expect from Bosch. They're built for high-quality, 24/7 performance with a range of reliable surveillance features, and they're designed for easy installation.



## IP 4000i, 5000i and 6000(i) cameras

We've taken the next step in video security with cameras that incorporate built-in machine learning capabilities...

## AUTODOME IP cameras

Like other Bosch network cameras, the AUTODOME IP moving cameras offer improved levels of security by delivering control, precision and detail whenever needed. Complemented with video analytics as standard designed to take data usage to a whole new level.



## Applications



Universities



Malls



Hospitals



Airports



Residential



Fitness Center



Sports Field



Show Room

## Applications



Stadiums



Hotels



Towers



Commercial Buildings



Restuarant



Schools



Theaters/Halls



Cinema

# Video Systems



*Bosch offers a wide range of video security cameras, recording solutions and software to deliver intelligent solutions that deliver smart data that helps to improve safety, increase efficiency and reduce costs.*

## DIVAR network and hybrid recording solutions

The DIVAR network and hybrid recorders offer the ability to create video security solutions with professional security features that are easy to install and simple to use



## DIVAR IP all-in-one recording units

The new DIVAR IP all-in-one solutions from Bosch combine recording, video management and local operation, providing you with a complete, ready-to-use video recording system.

## Mobile Application

With the free Bosch Project Assistant app System Integrators get a complete overview of a video security project, which makes planning, pre-configuration, commissioning and reporting more efficient, more transparent and more accessible. And, by delivering time-savings on your project of up to 30%, more efficient, too.







# BVMS (Video Management System)



BVMS

A scalable system that grows with your needs

BVMS is a modular and resilient security system that aggregates and delivers consolidated data to security operators in a way that helps them make informed decisions – so they can trigger the right actions and deploy a swift response to improve security and safety.

In addition, it ensures that data is available and secured at all times. Thanks to its scalability, BVMS grows with the user's needs. From BVMS Viewer to Lite, Plus, Professional or Enterprise, it can easily be upgraded while keeping the same look and feel so that no further operator training is required





# BVMS (Video Management System)



## Your path to superior video management

BVMS is a unique IP video security solution that provides seamless management of digital video, audio and data across any IP network.

The different editions of BVMS – Viewer, Lite, Plus, Professional and Enterprise – offer you full scalability, so you can expand your video surveillance system according to your needs and manage up to 200,000 cameras.

### Features

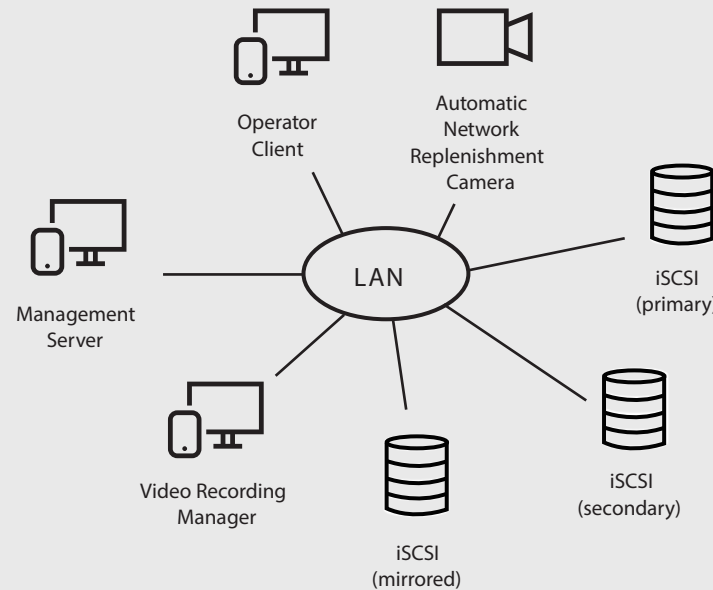
**Maximize resilience** - keep operations up and running even when both, Management and Recording Servers fail.

**Scalability** - guarantee scalable solutions for any size system.

**Bosch video at its best** - support Bosch cameras better than any other management software.

**Integration** - integrate third-party cameras, storage and further systems into BVMS.

**IT environments and data security** - profit from full IT compatibility from installation to configuration in a secure way.



Future-proof investment  
High scalability



Up to 200,000 camera channels



Up to 100 clients



Seamless upgrade from Viewer to Lite, Plus, Professional and Enterprise



Regular software updates

# PRODUCT PROFILE 2020-2021



**KWARIZMI**  
ENGINEERING SYSTEMS & CONTROLS CO. W.LL



*Driven by quality.*

<https://www.kh-controls.com/>



# Ave Products Residential Buildings





# Home Automation

## Home Automation

DOMINApplus is the best system to control homes: intuitive and easy to install, programme, and use, it can be expanded and modified at any time. DOMINApplus is always available to the user through an elegant touch screen display: a dedicated app allows you to interact with the home automation system even when you are out. The home you have always dreamed of has now come true. The AVE home automation range includes devices with Avebus or KNX communication protocols.

### Touch screen devices



### Front Plates



Available in many colors

### Thermoregulation



### Mobile App



### IP Video Intercom



### Sound System



Commercial



Residential

### Applications

# Hotel Management

## Domina Hotel System

The Domina Hotel system from AVE adapts easily to all needs in terms of costs and performance. Owners and managers of small hotels can find a simple economical system which adapts well to an environment in which there are no sophisticated requirements. On a larger scale the system can meet increasing needs up to the total network monitoring of rooms and all types of areas even in large hotels.



### Door Exterior Reader



### Door-interior Reader



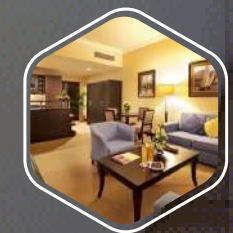
### Thermoregulation



### Central Control Software



### Customised RMS Plates



Hotel Apartments



Hotels

Applications



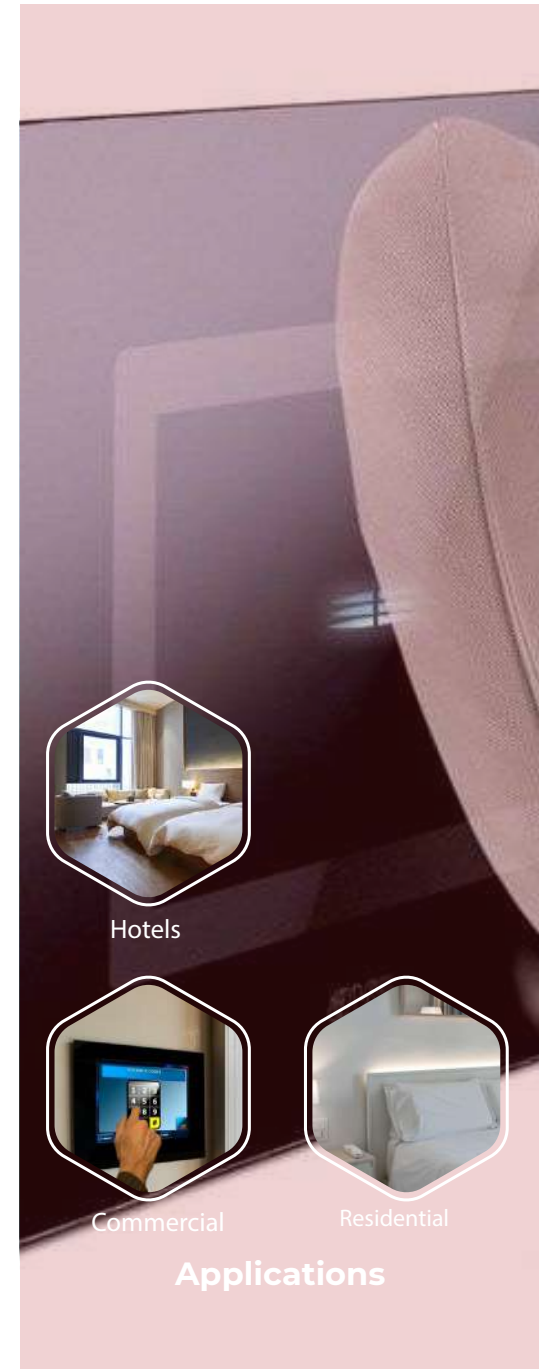
# Touch Keypad

## AVE Touch Keypads

It only takes one touch to understand that everything else has been left behind, forgotten, old-fashioned. Ave Touch is the unbelievable glass range with touch control that turns the electric installation into a furnishing element. It can be installed in standard flush-mounted boxes or in special wall-lined boxes and is available in version with normal electrical wiring or for home automation



### Customized Options available





# Ave Products Hotel Facilities





# PRODUCT PROFILE 2020-2021



**KWARIZMI**

ENGINEERING SYSTEMS & CONTROLS CO. W.L.L



# FIRE PROTECTION



*Driven by quality.*

<https://www.kh-controls.com/>

# FIRE PROTECTION

Fires affect thousands of companies each year resulting in injury, lost customer trust and building damage. By establishing a fire prevention and preparedness program, you can help avoid injuries to your employees and visitors, costly damages, and potential fines to your business.



# Fire Fighting

A fire fighting system is probably the most important of the building services, as its aim is to protect human life and property. Our service teams will regularly test and audit your system to ensure it meets all required standards. Kwarizmi Engineering Systems & Controls offers a range of quality and efficient fire fighting systems which is almost available in every building.

## Water Based



Hydrants



Hose Reels



Automatic Fire Sprinklers



Fire Pumps

## FM200 System



## Foam System



## Fire Extinguishers



## Fire Blankets



## Fire Rated Doors



GR RD  
**KOMTES**



## FIRE PROTECTION



# Fire Alarm

Fire Alarm systems are designed to discover at an early stage when time will still be available for the safe evacuation of occupants. Systems that are not properly installed or maintained may cause unwanted alarm activations. This has a negative effect on occupants' responses to genuine alarms and as a result downgrades their effectiveness. We in Kwarizmi Engineering and control systems provide the best solution and Engineering systems for the facilities to make it safe and smart.

## Panels



Conventional  
FACP



Addressable  
FACP



Outdoor Siren  
/ Flasher



Indoor Siren



Indoor Siren  
/ Flasher

## Initiating Devices



Smoke  
Detector



Manual Pull  
Stations  
(Indoor/ Outdoor)



Heat Detector



Beam Detector



Graphic and Repeater  
Annunciator

## Notification Appliances



**BOSCH**



**KWARIZMI**  
ENGINEERING SYSTEMS & CONTROLS CO. W.L.L

# Fire Command Center (Control Room)

Fire command centers are communication centers where dedicated manual and automatic facilities are located for the origination, control and transmission of information and instruction pertaining to a fire emergency to the occupants (including fire department personnel) of the building.

## What we provide

- 1- Design and Build
- 2- Integrating all facility's safety and security systems together
- 3- Provide the following systems that are required to secure the room and its operation:



Fire alarm



Intrusion Alarm



Fire Fighting



CCTV surveillance



Fm200



Access Control



Fire Rated Doors



Video Walls and Screens



Fire Rated Ceiling



Data Cabinets



Elevator Control



Emergency Voice Alarm



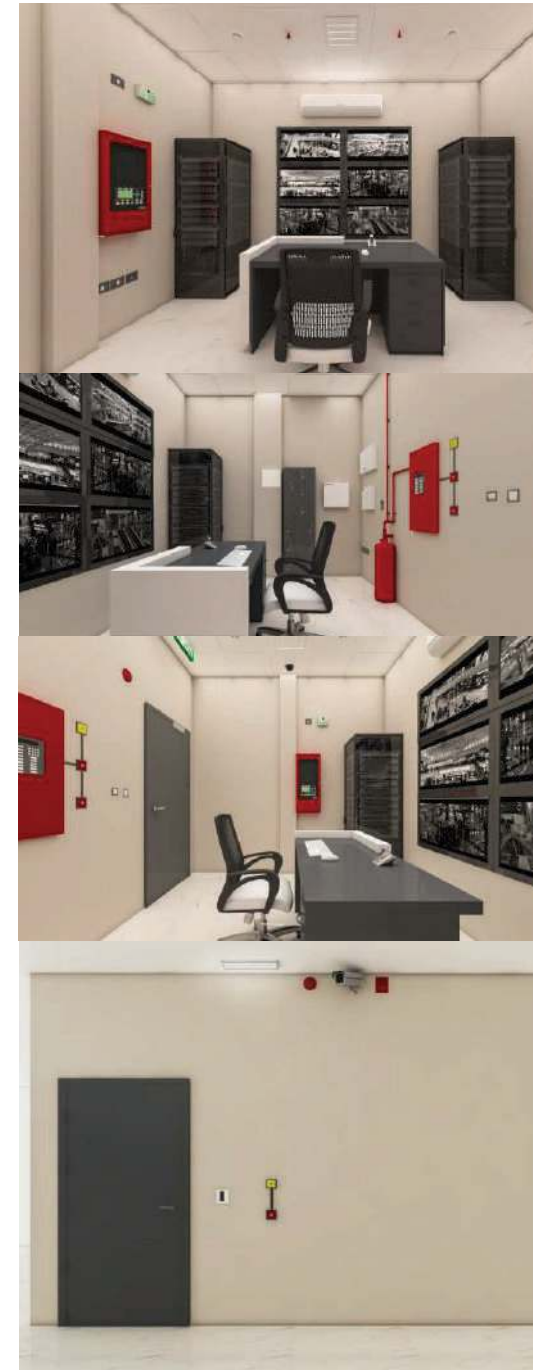
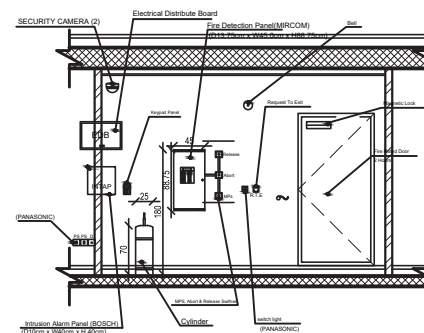
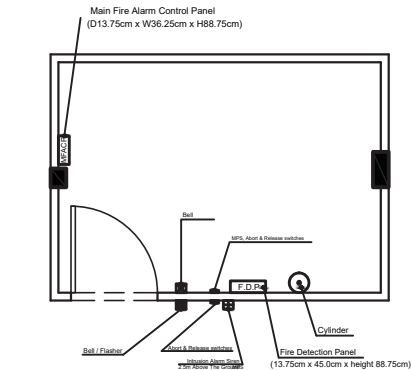
Annunciators



Two-way Communication System

## Prepare Design Drawings

When preparing the drawings our skilled team ensures that the proposed design is per code, international standards and standards of the local authorities.



# Gas Detection System

The ongoing commitment to total reliability led Sensitron to be the pioneer – first Company in the market – to develop the innovative Hybrid technology for gas detection. This consists of a sensor with double technology which assures a precise and accurate gas detection in particularly harsh environments.



## COMMERCIAL LINE

Nowadays SENSITRON PARK SYSTEM proposes an integrated solution fully compliant with the EN 50545-1 Standard; the system includes SMART P gas detectors (specific for NO<sub>2</sub>, CO and Petrol vapours), SIL1 certified, and MULTI-SCAN++PARK,, available for 8, 32, 64, 128 and 256 inputs, to fit the needs of car parks of different sizes.



## BUILDING & COMMERCIAL

Installations in Buildings, Hotel and Boiler rooms, as well as Residential applications are more and more asking not only reasonable cost-effective products but designed with Safety Performance and according to the relevant available Standards. Sensitron has developed this range for non classified areas with the same Safety concept of the industrial grade products developed for Hazardous areas.

## INDUSTRIAL LINE

A well known and established line of flammable and toxic gas detectors for industrial application. According to the gas to be detected, SMART3G may employ Pellistor, Infrared and electrochemical cells. The whole range is ATEX certified for EHSR and Performance and SIL2HW approved.



# Fire Warning Signs

Our fire safety signs and fire signs are vital to help provide fire prevention to your staff and visitors, and provide clear guidance so they know what to do in the event of an emergency. Our range of signs are designed to meet current fire safety regulations. It's essential that you adhere to the fire safety signs in your workplace and any other public space: they are there for your safety and ignoring them could have serious consequences.

## Exit Signs



## Assembly Points



## Disabled evacuation signs



**Refuge action**  
In the event of a fire:  
This refuge affords fire and smoke protection for approximately [ ] minutes.  
The evacuation plan in operation within these premises ensures that assistance will arrive at this point within [ ] minutes.



**Disabled persons should:**  
1. Remain calm.  
2. Wait here until assistance arrives.



1. Do not attempt to leave the building unassisted.  
2. Do not leave this point even temporarily.

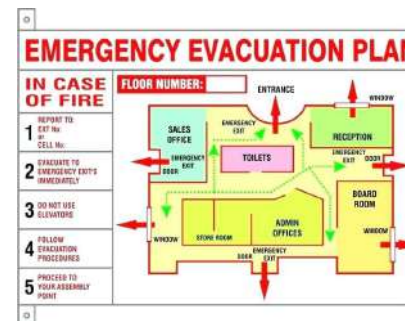
## Fire Action Signs



## Warning Signs



## Evacuation Plan





# FIRE Safety Training



## Fire Safety Training

Within any commercial setting, it's a legal requirement for certain members of staff to be trained in fire safety procedures – becoming your environment's designated fire wardens as a result. The person trained should have a clear understanding of the overall duties and responsibilities they have as a fire warden. This will include: what action they should take on the discovery of a fire, know the difference between different fire classes, which extinguisher to use for which fire and what the evacuation procedure is.

## People with disabilities

The Disability Equality Duty highlights that disabled people should not be discriminated against under any circumstance. Therefore, they should still be given an evacuation plan despite any differences in mobility. As such, the fire warden should be aware of those who may need extra assistance when evacuating and allow extra time for this so they are not exposed to any discrimination.





# PRODUCT PROFILE 2020-2021



**KWARIZMI**  
ENGINEERING SYSTEMS & CONTROLS CO. W.L.L



## NURSE CALL

Wide Area  
Networking

Telephony  
Integration



STATIC  
SYSTEMS  
GROUP

*Driven by quality.*

<https://www.kh-controls.com/>

# Better communication, collaboration and productivity

Keeping patients safe. Empowering care teams



# Nurse Call

## Nurse Call

*Multi-disciplined. Life-critical communication.*

Fundamentally, nurse call is about supporting patient care and helping to deliver good outcomes. Ultima™ is a helping hand in achieving this - whilst offering so much more. It delivers multi-disciplined, ward and site-wide life-critical communication. Meeting the challenges of today's busy acute environment, with an eye on the requirements of tomorrow

## Products

---



Staff Station



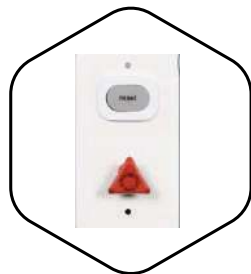
Bed Head Unit



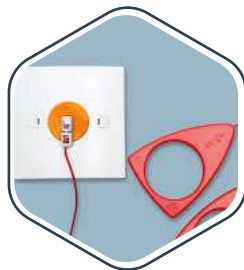
Over Door Lamp



Staff Presence Unit



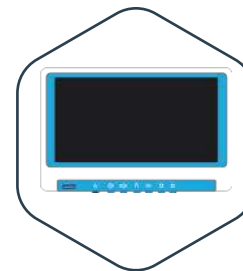
Emergency/  
Reset Unit



Pull Cord



Blue Code



Centralized  
Data Station

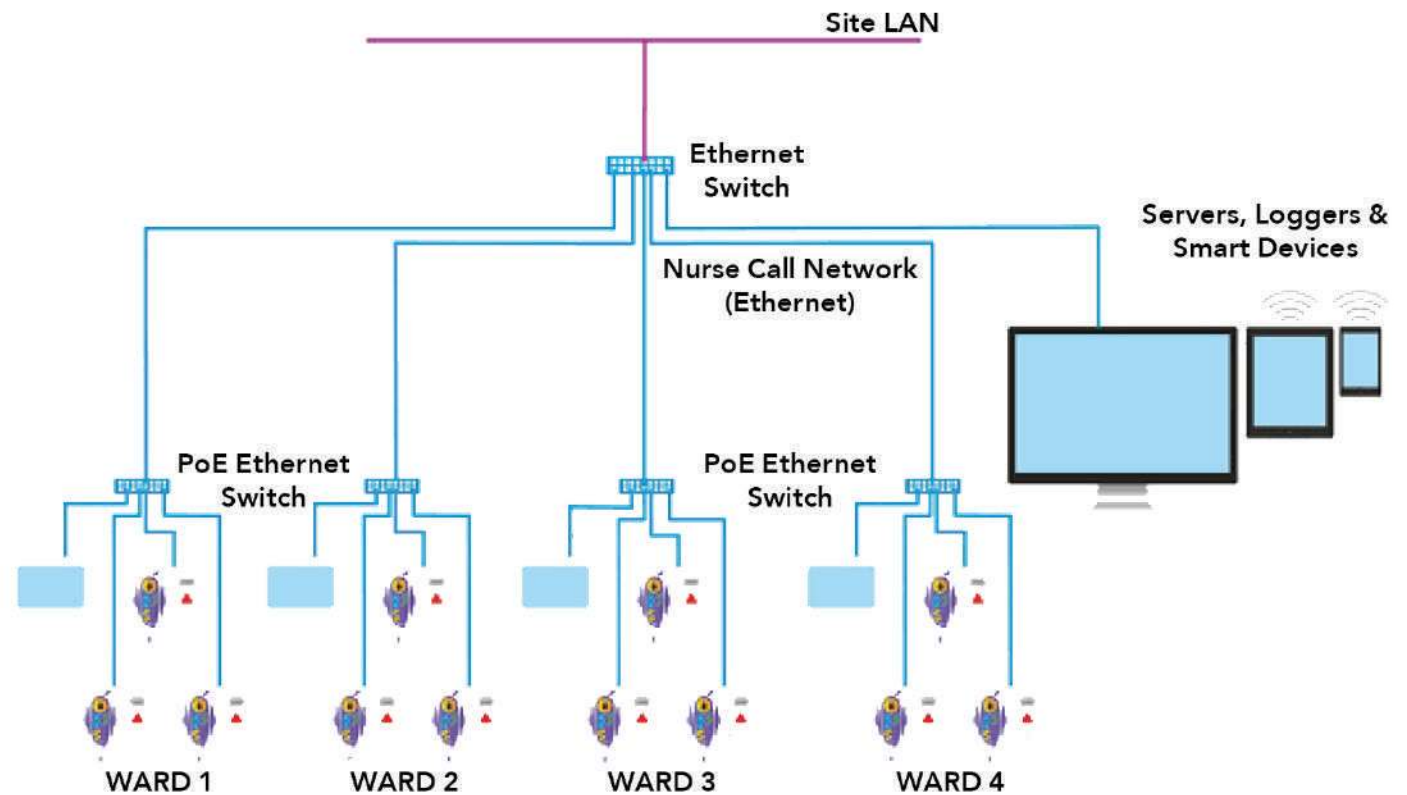




# Nurse Call

**Multi-disciplined. Life-critical communication.**

Ultima™ systems can work standalone, but they also share a common platform with Aspire SmartSync® and Codemlon™ systems, which is also shared with our extensive range of advanced safety, well-being and task management solutions.



# OUR CLIENTS

Our client list speaks for itself. Since our earliest days, we strived to achieve excellence and provide ultimate customer satisfaction, with a partnership approach, trust and dedication at the core of every engagement.





# KWARIZMI

*“Driven By Quality”*

## Contact Us

### Address:

 Office 303, 3rd Floor ,Al Mehanya Tower  
Al Waha Circle, Amman, Jordan

### Phone:

+962799900681

### Email:

[sales@kh-controls.com](mailto:sales@kh-controls.com)  
[thaer.ali@kh-controls.com](mailto:thaer.ali@kh-controls.com)