



Livingston  
**EDUCATIONAL  
SERVICE** Agency

Leading the Community  
to Achieve Educational Excellence

# SERVICES DIRECTORY FOR STUDENTS AND FAMILIES





# INSIDE

Your guide to Livingston ESA services.

This directory of services for students and families has five sections. The sections, and the services listed in each, are organized by age group, from birth to adult.

Contact information is included to make it easy to find help.

If you have a question, or need a service that isn't listed, we have a dedicated staff-person ready to help. Call or text **517.546.5550**, or send an email to **ContactUs@LivingstonESA.org**.







# Early Childhood Services

Livingston ESA's Early Childhood programs provide education and support services from birth to age 5.

Our professional team works with families to help their infants, toddlers, and preschoolers develop their learning, social and physical skills, preparing them to enter school and succeed.

## Getting Help

Getting help as early as possible is key.

If you think your child may have a disability or have concerns about their learning, emotional, communication, physical or developmental needs, call the special education director in your local district (see the list on page 4).

## Special Education

Livingston ESA provides education and support services for students with disabilities. There is no cost for special education services.

Eligibility is based on learning, emotional, physical, communication, and developmental needs, and each child must be evaluated to receive services.

We serve as a partner with our local Livingston County School Districts to serve students with disabilities.

## Eligibility

Special education evaluations help determine if a student has a disability and is eligible for special education services.

During the evaluation, our specialists observe how your child plays, learns, communicates their needs and emotions, and how their physical development compares with others in their age group.



## EarlyOn® (birth - age 3)

In-home services for parents whose infants and toddlers have, or are at risk for, developmental delays.

Lori Waite **517.540.6808**  
LoriWaite@LivingstonESA.org

## Early Childhood Special Education (ages 3 - 5)

Education and support services help preschoolers ages 3–5 with disabilities learn how to make friends, play cooperatively, and better communicate with teachers and classmates.

Services are provided in each local district.

Sara Leggett **517.540.6846**  
SaraLeggett@LivingstonESA.org

## Pathway School

For students requiring more support than can be provided in a local district, Livingston ESA provides specialized education and support services at Pathway School in Howell.

To learn more about our Pathway programs, please contact us.

Kristin Resseguie **517.540.6875**  
KristinResseguie@LivingstonESA.org





## Preschool

Livingston ESA's early education programs prepare children to enter school and succeed.

Our preschool programs are free, or reduced-cost.

We provide children enrolled in our preschool programs daily breakfast, lunch, and/or snacks, as well as wellness screenings.

Main Office      **517.548.2100**

## Head Start Preschool (ages 3 & 4)

Head Start is a free or reduced-cost program for toddlers ages 3 and 4, offered at locations in each Livingston County school district and at Livingston ESA's Education Center.

Teresa Grostic      **517.540.6847**  
TeresaGrostic@LivingstonESA.org

## Great Start Preschool (age 4)

This state-funded program for 4-year-olds offers free or reduced-cost preschool at locations in each school district.

Teresa Grostic      **517.540.6847**  
TeresaGrostic@LivingstonESA.org



# Special Education

Livingston ESA provides education and support services for students with disabilities from birth through age 26. There is no cost for special education services. Eligibility is based on learning, emotional, physical, communication and developmental needs, and each child must be evaluated to receive services.

We serve as a partner with the county's public schools to serve students with disabilities.

## Special Education Services

For students enrolled in a local school, we design highly individualized education plans to meet their unique learning needs.

Services are coordinated with the Special Education Director in your local school district.

## Eligibility Evaluations

Eligibility evaluations determine if a student is eligible for special education services.

During the evaluation, our specialists observe how a child plays, learns, communicates their needs and emotions, and how their physical development compares with others in their age group.





# Directors of Special Education



**Michelle Allison, Director**

Brighton Area Schools  
**810.299.4081**



**Sue Pearson, Director**

Hartland Consolidated Schools  
**810.626.2113**



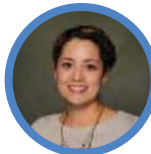
**Carie Cowger, Director**

Pinckney Community Schools  
**810.225.3918**



**Kristen Resseguie, Director**

Pathway School  
**517.540.6875**



**Sara Leggett, Director**

Early Childhood Special Education  
**517.540.6846**



**Kim Wooster, Director**

Fowlerville Community Schools  
**517.223.6192**



**Malissa Patrick, Director**

Howell Public Schools  
**517.548.6350**



## Pathway School

For students requiring more support than can be provided in a local district, Livingston ESA provides specialized education and support at Pathway School.

To learn more about our Pathway programs, please contact us.

Kristin Resseguie      **517.540.6875**  
KristinResseguie@LivingstonESA.org

## Extended School Year Services

By providing services over the summer, Extended School Year services help students maintain the academic progress they've made during the regular school year.

Services are coordinated by the local special education director and your student's education team.

## Work Study (ages 16 - 18)

We match a student's interests and skills with a local employer's needs to provide valuable, real-world work experience.

Students learn the importance of attendance, appearance, attitude, safety, and other employer expectations.

Kristin Resseguie      **517.540.6875**  
KristinResseguie@LivingstonESA.org



## Job Placement (ages 18+)

Teachers and job coaches help students acquire the skills they need to find and succeed in a job.

Students practice interview skills and learn to fill out job applications.

Pleasanna Carter      **517.540.6853**  
PleasannaCarter@LivingstonESA.org

## Adult Transition Services (ages 18 - 26)

We want to help you and your child prepare for adulthood and the changes this transition will bring in the areas of health care, education, employment, independence, and other facets of life.

We'll help you and your child prepare for the often-challenging transition to life after school, whether the next step is living independently, getting a job, or attending college.

Kristin Resseguie      **517.540.6875**  
KristinResseguie@LivingstonESA.org





## Instructional Support Services

Our team of specialists helps children who have issues with behavior, social skills, emotions, speech, language or development.

Specialists usually work with children one on one, and it's very common for students to receive more than one type of support service.

## Assistive Technology

Assistive Technology is a way of helping kids learn. Tools like text-to-speech software lets kids who struggle with reading see text and hear it at the same time.

Our program consultants work with your child and their classroom teacher to find the right tool for your child.

## Autism Spectrum Disorder

Some students with autism communicate by speaking, and others use nonverbal communication. Just like autism looks different for every child, the ways we support them are different too.

Our program consultants work together with each child, their parents, and teachers to decide which support to use and monitor its success.

## Deaf and Hard of Hearing

Different methods of communication, like sign language and finger-spelling, and interpreters are used to communicate with your child – and to teach them to communicate with others.

Assistive technology tools, like speech-to-text software, can help make it easier for students to communicate with their teachers and classmates.



## Homebound Services

When illness prevents a student from attending school for more than 5 consecutive days, homebound teachers help them keep up with assignments and tests until they're able to return to school.

Carol Braden **517.540.6804**  
CarolBraden@LivingstonESA.org

## Medical Care

Registered nurses provide medical care to students with significant or complex health care needs.

## Occupational Therapy

Occupational therapists work on building the motor skills students need to do everyday tasks like holding a pencil or getting dressed.

## Physical Therapy

Physical therapists work with students to develop their large muscle groups and build strength and coordination so they can enjoy activities like riding a bike.

## Psychology

School psychologists work with a child's teacher to develop strategies that complement how the student learns. Psychologists also address emotional issues. For example, students with anxiety learn relaxation techniques.





## School Social Work

In addition to helping students develop positive social skills, school social workers connect students and their families with community resources for food, clothing, housing, medical care, or tutoring.

## Speech & Language

Speech and language therapists work to build communication skills at every age. To build literacy skills, therapists teach young children to sound out letters. Older students learn the rules of conversation, such as taking turns speaking and listening to others.

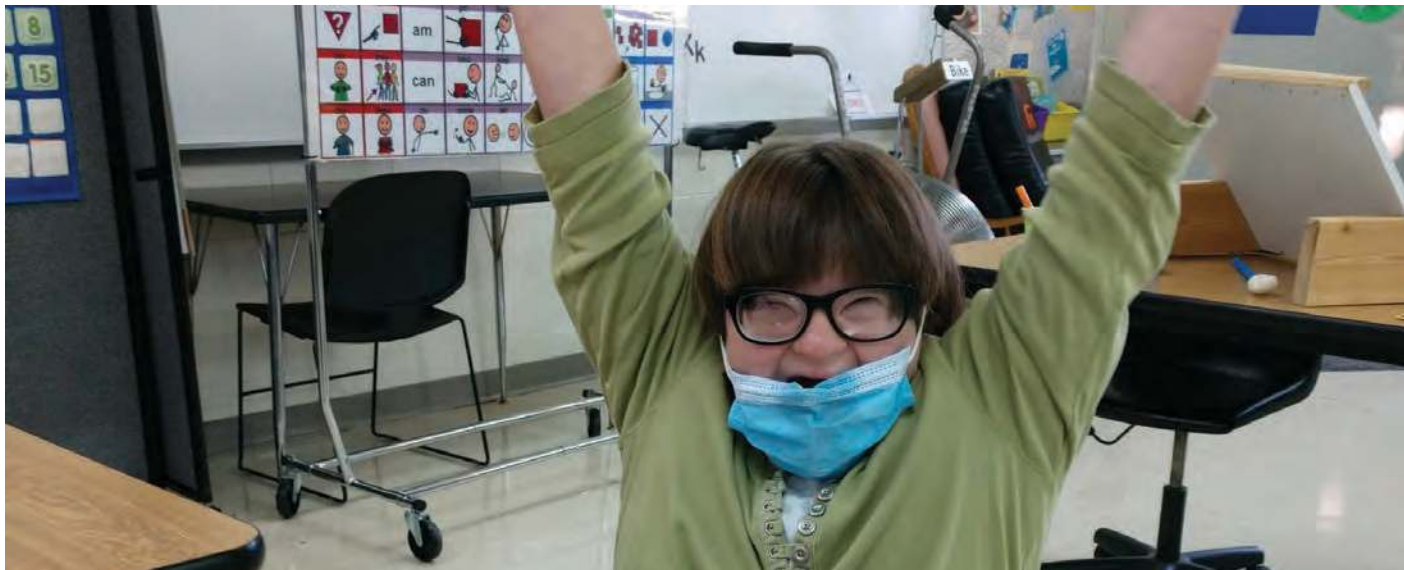
## Attendance and Truancy

Chronic absenteeism may prevent children from reaching early learning milestones, increase the likelihood of dropping out, and has been linked to poor outcomes later in life. Our Attendance Liaison acts as the go-between the child and their family, and the school, helping to keep the child in school and the family from entering the court system.

## Visual Impairments

Orientation and mobility services help students with visual impairments gain independence by teaching them how to use hearing, touch and to navigate their surroundings.

Older students learn advanced skills such as using a cane to clear a path, crossing streets, and riding on public transportation.



# Social & Emotional Support Services

## Behavioral Assessment

For student's whose behavior is a barrier to their learning, a behavioral assessment is the first step in determining the cause or reason behind the behavior.

## Behavioral Intervention Plans

After identifying the cause or reason for the behavior, a written plan is developed to help teach new skills and improve your child's success in the class.

## Peer-to-Peer Support

Students improve their social skills and learn appropriate behavior by spending time with their peers. In weekly meetings, students socialize and play games at lunch hour or play cooperatively during recess.

## Trauma Team Evaluations

We work with LACASA, a nonprofit organization in Livingston County, to help students dealing with traumatic events of abuse or neglect. Together, we create a plan of services so students stay safe and are able to function day-to-day in school and at home.



## Adult & Continuing Education

We offer many different pathways for high school students, as well as adults who have left school, to pursue their education.

We provide free resources so adults can complete their high school diploma, prepare for the GED exam, add to their academic and job skills, and advance their careers.

These programs are free; there are no enrollment or registration fees.

For information about career development programs, contact:

Ted Kroll      **517.540.6890**  
TedKroll@LivingstonESA.org

## WAY+ Livingston

The WAY+ program enables students currently enrolled in school to earn a high school diploma in a setting other than a traditional classroom.

## Job Readiness (ages 14+)

The Workforce Innovation & Opportunity Act (WIOA) program prepares high school students for future success in the workplace. The program offers mentoring, job shadowing, résumé building, paid work experiences and more. Students must meet certain eligibility requirements to participate.



## Transportation Services

Livingston ESA's Regional Transportation Collaborative provides transportation to-and-from school to students enrolled in the Brighton, Hartland, Howell, and Pinckney school districts.

Our Specialized Transportation department provides services for students with disabilities throughout Livingston County.



**Laura O'Lewin**

Brighton Area Schools  
**810.229.3980**



**Susan Miller**

Pinckney Community Schools  
**810.225.3960**



**Burt Nowlin**

Hartland Consolidated Schools  
**810.626.2175**



**Deana Petty**

Livingston ESA  
Specialized Transportation  
**517.540.6896**



**Val LaCarter**

Howell Public Schools  
**517.548.6245**





## Preschool

Daily transportation is available to and from most preschool programs.

Teresa Grostic **517.540.6847**  
TeresaGrostic@LivingstonESA.org

## Regional Transportation Collaborative

The Regional Transportation Collaborative provides daily transportation to-and-from school as well as school-sponsored athletic and field trips for students in the Brighton, Hartland, Howell and Pinckney school districts.

Contact the transportation office in your local district for information about bus routes, stops and times.

## Specialized Transportation

All students enrolled in Livingston ESA special education programs receive daily transportation to and from school.

Deana Petty **517.540.6896**  
DeanaPetty@LivingstonESA.org





# Community Resources

## Backpacks for Kids

Free backpacks with basic school supplies are provided to students in preschool through grade 12 whose families have financial hardships.

Judy Paulsen **517.540.6802**  
JudyPaulsen@LivingstonESA.org

## Youth who are Homeless or Displaced

Transportation, free or reduced lunch, and school supplies are available for students who are homeless. Students can make arrangements to continue attending the same school even if they don't currently live in their home district.

Candice Olrich **517.540.6834**  
CandiceOlrich@LivingstonESA.org

## The Enrichment Project

Students in foster care receive clothing, financial assistance and other support to participate in sports and extracurricular activities with their peers.

Candice Olrich **517.540.6834**  
CandiceOlrich@LivingstonESA.org

## Holiday Giving Program

Community groups and individuals buy holiday gifts for students who are homeless.

Candice Olrich **517.540.6834**  
CandiceOlrich@LivingstonESA.org





Livingston ESA serves students and families in five Livingston County School districts: Brighton, Fowlerville, Hartland, Howell, and Pinckney, as well as students in charter and private schools.

We provide:

- Early Childhood Services
- Services for Students with Special Needs
- Career Development & Continuing Education
- Transportation Services
- Connections to Community Resources

Our professional team includes highly trained and experienced teachers, psychologists, speech & language pathologists, physical and occupational therapists, behavior specialists, program consultants, and transition coordinators.

Pathway School is located on our main campus, in Howell, across from our Education Center and offers a dedicated learning space and intensive support services for students with disabilities.

For more information about our services, call or text **517.546.5550** or email **[ContactUs@LivingstonESA.org](mailto:ContactUs@LivingstonESA.org)**.



 SCAN ME