

# sonningcommon

magazine



'TIS THE  
*Season*



## G.B. REMOVALS

House, Office & Flat moves etc.

Local Non Local

Part Load to Single item, pianos

Prompt Reliable Service

**Large Van with Tail Lift**

Contact: Gary – Sonning Common

T: 0118 924 2763 M: 0799 070 7125

**HOUSEHOLD CLEARANCES**

(REGISTERED WASTE CARRIER)

## WATER SOFTENERS

### M.P. SOFTENERS

Enjoy the benefits of soft water.

Top quality softeners supplied and  
professionally installed.

Sales, Service, Block Salt delivered

**TEL: 0118 941 0869**

**07967 009838 or**

**0118 972 3773**

Chiltern  
Beauty

Outstanding Natural Beauty

Waxing

Electrolysis

Eyelash Tinting

Eyebrow Shaping

Jessica Pedicures

Jessica Manicures

Bridal Make-up

Make-up & Lessons

Aromatherapy Facials

0118 972 3157

[www.chilternbeauty.co.uk](http://www.chilternbeauty.co.uk)

Janet Copp I.H.B.C

9 Sedgefield Close, Sonning Common

## JEN'S MOBILE HAIRDRESSING AND BARBER SERVICE

13 years experience

MEN'S CUT £7

WOMEN'S CUT £10 C/B DRY £15

CHILDREN'S CUT £5

COLOUR & HIGHLIGHTING AVAILABLE

**07753 253 476**

[jenshairservices@hotmail.co.uk](mailto:jenshairservices@hotmail.co.uk)

## SONNING COMMON PRE-SCHOOL

GROVE ROAD  
SONNING COMMON  
0118 972 4760

We are a happy friendly pre-school  
welcoming children from 2 years  
6 months, to come and learn through  
play. We have a purpose built building  
& extensive play garden.

Morning sessions are 9.00am - 12.00pm

Afternoon sessions are 12.00pm - 3.00pm

After School Club sessions are 3.00pm - 6.00pm



elements;  
KITCHENS • INTERIORS

Visit our stunning showroom:  
8b Portman Road, Reading RG30 1EA  
Tel 0118 959 9919  
[www.elementskitchens.co.uk](http://www.elementskitchens.co.uk)



## Adam's Pest Control

Professional Pest Control in Sonning Common  
Rats, mice, rabbits, squirrels, moles, insects, foxes.

Available 7 days a week.

BPCA Qualified and Fully Insured

Call 0118 9723709 or 0784 9342690

[www.adamspestcontrol.co.uk](http://www.adamspestcontrol.co.uk)



# From “ the editor



Sadly, this is my last edition as editor of Sonning Common Magazine. I would like to thank all our readers who have supported both me and the magazine, either through contributing articles and photographs or by providing useful feedback on content and design.

Also, thank you to the magazine committee, our excellent designer, Kevin Taplin, and all of our advertisers for their on-going support.

I have thoroughly enjoyed developing the magazine over the past two and a half years, with the help of the committee and the wider community, and wish the magazine every success in the future.

Athough I'm stepping down as editor, I intend to stay on the committee and continue to be involved with the magazine.

We're hoping there is another potential editor out there who is interested in taking on the role. It is a great way to get involved with the community and very rewarding (see the note from the chairman on page 7).

In this edition we have some eye-catching art from the children of Kidmore End Primary School (In Focus); an expanded Youth Zone; news from around the community; and letters on page 21.

We also have some top tips on keeping your home secure over the festive period. Check out Noticeboard on pages 10 and 11 and Diary Dates to see what's going on.

Wishing you all a fantastic Christmas and New Year celebration.

**ROS VARNES** Editor

Email: [editor@sonningcommonmagazine.org](mailto:editor@sonningcommonmagazine.org)

**ps...**

Sonning Common Magazine is on sale at the village library in Grove Road for £1.50 a copy. Annual subscriptions are available for £15. Contact Geoffrey Adams. Email: [chairman@sonningcommonmagazine.org](mailto:chairman@sonningcommonmagazine.org)  
Phone: 0118 972 2134

Magazine contributions may be posted to: 1 Woodlands Road, Sonning Common RG4 9TD.

WHILE EVERY EFFORT IS MADE TO ENSURE THE ACCURACY OF INFORMATION PRINTED IN THIS MAGAZINE, THE EDITOR AND THE PUBLISHER CANNOT ACCEPT ANY RESPONSIBILITY FOR THE CONSEQUENCES OF ERRORS THAT OCCUR.

## Contents

Community news:

- 2 Snow plan for the village
- 6 Library awaits its fate
- 6 Youth club reopens

10 Noticeboard

14 In Focus:  
Visions of God

21 Letters

22 Tom Fort

24 Youth Zone

28 Diary Dates

### CHAIRMAN

**Geoffrey Adams**

1 Woodlands Road, Sonning Common, RG4 9TD  
email: [chairman@sonningcommonmagazine.org](mailto:chairman@sonningcommonmagazine.org)  
tel: 0118 972 2134

### DIARY DATES

**Helen Barker**

1 Walnut Close, Sonning Common, RG4 9DG  
email: [helen.barker@tesco.net](mailto:helen.barker@tesco.net)  
tel: 0118 972 1241

### ADVERTISING

**John Pearman**

50 Kennylands Road, Sonning Common RG4 9JT  
email: [advertising@sonningcommonmagazine.org](mailto:advertising@sonningcommonmagazine.org)  
tel: 0118 972 2381 / 07794 291776

### COVER IMAGE

**Deck the halls**

Wreath by Sue Hedges, Sonning Common WI.  
Photo by Ros Varnes

Design and artwork by:  
**tensevennine.**  
8b portman road reading rg30 1ea  
tel 07887 902 376  
[www.tensevennine.com](http://www.tensevennine.com)





# Get set to go digital

**Most homes in the village will be switching to a digital TV signal on 8 and 22 February.**

This two-phased change-over is for households which receive BBC South and Meridian. It will mean that after 22 February those people with appropriate TV sets should be able to get High Definition (HD) programmes.

Those households which receive London transmissions will make the switch on 4 and 18 April.

People who receive their television signal through a satellite dish need take no action.

However, those who don't will need to retune all television sets in their homes after the change-over dates, even if they already receive digital channels.

Digital UK, the organisation responsible for managing the change-over, has produced a leaflet with guidance on how to re-tune television sets, which you may have already received.

How do you know whether you are receiving digital TV? Well, if you receive BBC3, BBC4, and ITV2 and a host of other channels, then you have digital.

If you only get BBC1, BBC2, ITV1, Channel 4 and Channel 5 then you are receiving an analogue signal and this signal will be turned off in 2012.

As the change-over to a digital TV signal approaches there will be a message on the TV warning of the need to take action.

Analogue viewers will need to convert to digital, either by acquiring a set-top box, which costs between £25 and £120, or by changing their TV set.

They may also need to change their aerials at a cost of £60 to £180 from a registered digital installer.

Help is available with the switch-over for those over 75 and for people on certain benefits. For more information visit [www.digitaluk.co.uk](http://www.digitaluk.co.uk) or phone 0800 408 5900. n



n Photo by Alan Goswell

## Plan to combat heavy snow

**After two winters that saw Sonning Common almost grind to a halt, the parish council has devised a snow plan to help deal with heavy weather.**

Sonning Common Parish Council has purchased its own supplies of salt and equipment and wants to work with residents to make the village safer.

The aim is to ensure that the core shopping areas, medical facilities, primary school and library are safer to get to on foot. Once the core area has been treated, a wider area may be considered for treatment.

Oxfordshire County Council will be responsible for gritting only the main Peppard Road and the bus route through the village.

Councillor Dirk Jones said: "It still remains the responsibility of all property owners to ensure safe walking conditions between the pavement and their front door.

*"While the snow plan is essentially a well-resourced DIY plan it will rely on a, 'Yes, we can', spirit. It's our village, we now have the resources, so let's combine our efforts to make it safer for everybody this winter."* n

**For more information on the snow plan contact:**

**Councillor Dirk Jones 0118 972 2165 / Parish Clerk Philip Collings 0118 972 3616**

## Parish council update

n The hand-weeding of the village has now been completed.

n A new bench has been erected at the bus stop in Peppard Road and the parish council is investigating the provision of a new bus shelter at Essex Way.

n The parish council is to investigate the economics of installing solar panels in the village hall.

n Salt and equipment for dealing with heavy snow has arrived and will be stored at the village hall.

n Fencing and gates for all the play areas have now been installed.

n The parish council is to enforce the removal of A-frame notices, in response to complaints from residents.

n With the help of a grant from the parish council, The Village Gardeners have created a newly-planted flower bed outside One-stop store, designed by professional landscape artist, councillor Gail Noble.

n Oxfordshire County Council has finally agreed to give the Youth Club at Chiltern Edge School a full grant, as a direct result of an appeal by the parish council.

n The parish council wishes to congratulate councillor Douglas Kedge on his appointment to the Standards Board of South Oxfordshire District Council. This body investigates complaints made against councillors and advises councillors on the Code of Conduct.

**COUNCILLOR CHRISSIE PHILLIPS-TILBURY**  
**Sonning Common Parish Council**

## Coffee morning success

Two coffee mornings in the village have raised more than £1,000 for Macmillan Cancer Care. Linda Webb and June Fisher hosted an event in the village hall which made a fantastic £750.

There were plenty of goodies to entice passers-by. On sale were cakes, books, plants, toys and clothes and the side room was turned into a small coffee shop.

Village singing group Nottakwire entertained passers-by while several ladies did demonstrations of lace and crochet-making.

Linda and Jean said the event far exceeded their expectations and turned out to be a thoroughly enjoyable and worthwhile occasion.

In Kennylands Road Penny Snowden and Leena Wisely were thrilled to raise £400 from their coffee morning.

Again, a lot of hard work ensured a great atmosphere and there were many goods on sale as well as delicious cakes and coffee.

Both sets of organisers commented on the great community spirit evident at their events and the generosity of local people.



**Ladies at the Kennylands Road coffee morning in aid of Macmillan Cancer Care.**  
Photo by the Henley Standard

## Fun day was a big hit

**A fun day, aimed at strengthening community relations in Sonning Common, was hailed as a great success.**

The event was for the residents of Ashford Avenue, Pages Orchard and Farm Close. It was organised jointly by residents, NOMAD youth and community project, the Rainbow Children's Centre and local housing association Soha.

Residents enjoyed live music, a barbecue, lessons in circus skills, face

painting and cake decorating and had a good opportunity to socialise.

Andrew Bryant, Rainbow Children's Centre play worker, said: "It was a brilliant example of how collaborative working can be a rewarding process for local communities, especially with such keen involvement from the families themselves.

"The biggest question on everybody's lips was, 'When are we going to do something like this again?'" n



n Enjoying the community fun day in Pages Orchard.

## Preparing for Spring

A group of Chiltern Edge School students joined forces with the Village Gardeners recently to plant some Spring bulbs. Lewis Clifford and Ashley Griffiths are pictured hard at work outside the school. n



## Looking spick and span

**The village hall management committee has been busy having the village hall spruced up, ready for Christmas.**


They have had the floor professionally cleaned and polished and have bought a new Christmas tree.

Local schools regularly display their artwork in the hall. Currently on show is Visions of God by year 3 at Kidmore End Primary School.

Committee chairwoman Sue Frayling-Cork is always keen to hear from other individuals or groups who are interested in displaying art in the hall. Phone: 0118 972 2312. n



**PICTURE FRAMING**  
**SMALL LOCAL WORKSHOP**  
*Work carried out for local gallery*  
 Complete framing service  
 Canvases stretched  
 Mounts cut for existing frames  
 Old photographs restored  
 Local collection/delivery  
*Contact Colin Ward 0118 972 2075*

  
**Oak Grove Services**  
 LANDSCAPING (HARD OR SOFT)  
 FENCING • TURFING • PATIOS • HEDGING  
 WATER FEATURES  
**James Watkins**  
 'Oak Grove' • 13 Grove Road • Sonning Common • Berkshire RG4 9RH  
 Telephone: 0118 972 2659

**YOU READ IT  
 HERE FIRST**

---

If you respond to any of these ads, please mention sonning common magazine


**PEPPARD BUILDING SUPPLIES**  
 Telephone: Kidmore End 0118 972 2028

---

**EVERYTHING FOR THE  
 HANDYMAN & BUILDER**

---

**Bishopsland Farm • Peppard Road  
 Dunsden • RG4 9NR**




**Byways Dental Practice**

*Quality Care      Dedicated Team*

Byways provides friendly and professional dental care and is located in the tranquil surroundings of beautiful Checkendon village. Our services include:

- + All aspects of general dentistry
- + Teeth whitening and cosmetics
- + NHS for children & anyone in full-time education
- + Affordable payment plans
- + Flexible opening times
- + Ample free car parking

To book an appointment or for more information call us on 01491 680412 or email [info@bywaysdental.co.uk](mailto:info@bywaysdental.co.uk)

**Byways Dental Practice**  
  
 Main St, Checkendon, RG8 0SP Tel 01491 680412

**Computer Problems?**  
*Is your PC outdated, misbehaving, virus infected?*  
 Fault Diagnosis, Maintenance & Upgrades,  
 Data Recovery & Migration, Virus Cleaning,  
 Networking, Broadband and much more.

---

**Call Robin Piercey**  
 at Influential Computers on  
**01491 680036**  
 or visit [www.influentialcomputers.com](http://www.influentialcomputers.com)

**GRAHAM S** Painting & Decorating – Fascias & Soffits  
**M AINTENANCE** Door & Window Fitting – Plumbing

Fitted Bathrooms – Floor & Wall Tiling – Fencing & Decking  
 Wood & Laminate Flooring – Sheds Supplied & Fitted  
 Garden Maintenance – Guttering & Flat Roofing etc...

**FREE ESTIMATES 0118 972 3114**



  
**JL COX Plastering**  
 • Ceilings • Walls • Dry Lining • Rendering  
 • Pebble Dashing • Patch Repair Work  
**Call Jamie on 01189 242861**  
 Or Email : [jcox.plastering@hotmail.co.uk](mailto:jcox.plastering@hotmail.co.uk)



## Robin James OPTICIANS



- Comprehensive eye examinations
- Full contact lens service
- Free specs for children
- Extensive range of designer frames
- Main agent for Zeiss and Rodenstock lenses
- Free parking

**0118 947 2099**

[www.robinjames.co.uk](http://www.robinjames.co.uk)

44 Church St, Caversham, Reading (opposite Waitrose)

## BONNER LOCKSMITHS

**INSURANCE APPROVED**

**DOORS & WINDOW LOCKS SUPPLIED & FITTED,  
CHANGED OR UPGRADED (BS3621)**

**DOMESTIC & COMMERCIAL PREMISES  
DIGITAL LOCKS • BARS**

**FREE NO OBLIGATION QUOTE**

ALL AREAS COVERED



CALL OUT SERVICE

01491 680216

CRESTWELL HOUSE

FULL MEMBER  
OF BRITISH  
LOCKSMITH  
INSTITUTE

Beech Lane, RG8 0PX • Woodcote Nr. Reading  
PROPRIETOR: S. J. BONNER



## C. JONES PLUMBING & HEATING

All aspects of Plumbing &  
Heating work undertaken.

ALL WORK GUARANTEED

**TELEPHONE:**  
**0118 972 3394**

**MOBILE:**  
**0771 110 9077**

## Red Kite Electrical



Domestic Electrical & Solar Power

Find out more at: [www.redkiteelectrical.co.uk](http://www.redkiteelectrical.co.uk)

Call a locally based electrician.  
No job too small. Free estimates.

Phone: 0118 907 6342

Mob: 0788 2737402

Email: [sparks@redkiteelectrical.co.uk](mailto:sparks@redkiteelectrical.co.uk)  
17 Burnham Rise, Emmer Green

City & Guilds qualified  
NAPIT Part P approved

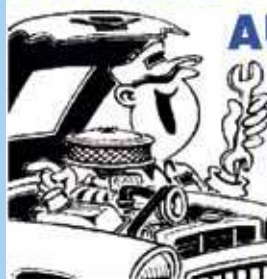


## Kidbys Sheds & Timber Buildings

Tel: 0118 972 33 80

Kidbys Yard, 28 Kennylands Road  
Sonning Common, Reading, RG4 9JT  
[www.kidbys.co.uk](http://www.kidbys.co.uk) Fax: 0118 972 10 02

## Mike Farina AUTO SERVICES



SERVICING

REPAIRS & WELDING

MoT TEST ARRANGED

COMPETITIVE RATES

• ALL MAKES OF VEHICLE UNDERTAKEN •

21 SEDGEWELL ROAD • SONNING COMMON  
Tel: KIDMORE END 0118 972 4036

## SPRUCE MAINTENANCE SERVICE

For all your property maintenance requirements including, decorating inside and out, paper hanging, wall & floor tiling, carpentry, hand painted kitchens and furniture, water damaged ceilings & Insurance work. Hedge and grass cutting services.

**ROB SMITH**  
**TEL: 0118 972 4560**



## VILLAGE BARBERS

**0118 972 3930**

**24 PEPPARD ROAD  
SONNING COMMON**

**10% OFF WITH THIS VOUCHER**  
**CHILDREN'S PLAYROOM**

**CUTS - £10.00 GRADES - £8.00 CHILD CUTS £9.00**  
**CUTS & BLOW DRY - £10.00 RESTYLE - £15.00**  
**SENIOR CITIZEN - £7.00 BEARD TRIM £4.00**



## Football club ball raises £9,000

Rotherfield United Football Club held its first ever All Hallows' Ball recently in the impressive surroundings of the Great Hall at Shiplake College.

More than 100 guests were treated to a sparkling reception, three-course dinner and live band.

The evening's auction was a huge success, with high quality donations from several local businesses in Sonning Common and the surrounding area.

A fine time was had by all and the final figure raised was in excess of £9,000. The money will go towards the building of a new clubhouse.

The club, which was founded in 1973, has over 250 registered players and recently achieved FA Standard Charter Development Club Status. [n](#)

Pictured at the All Hallows' Ball are, from left, Caroline Jordan, Heather Mullin (RUF fund-raising officer), Bonnie Emmett, Christine Atkinson and Helen Beville.



## Public inquiry on housing proposal

**A public inquiry into the application by TA Fisher to build 50 new homes to the rear of Kennylands Road will be held in early January.**

It will take place in Crowmarsh Gifford and be led by an independent inspector, Roger Tucker.

Residents' representatives, who are opposed to the site being developed, will be speaking against the application, as will a member of the parish council's planning committee.

Meanwhile, the planning application to build 80 new houses on Lea Meadow was withdrawn again in early November before South Oxfordshire District Council had reached a decision. [n](#)

# Library awaits its fate

The future of Sonning Common Library is to be decided at a meeting of Oxfordshire County Council's cabinet members on Monday, 12 December.

The council is currently proposing to keep Sonning Common's library open with access to the county's library infrastructure and book stocks.

However, it is planning to fund professional staff for just one-third of the library's opening hours and expects volunteers to fill the gaps.

If this proposal goes ahead, Sonning Common would be in the third and lowest tier of library provision in the county.

The Friends of Sonning Common Library believe the proposals are unfair and will fail to meet the needs of our community.

As part of the public consultation into the future of the county's library service, the Friends submitted a 16-page document to the council, along with a public petition, arguing the case for a professionally-run service to be retained by Sonning Common.

The key arguments were that the library is at the heart of school and community life; it is an essential part of educational provision in the area; and a large and developing village requires a properly-resourced library.

The Friends would like to see budgetary cuts being shared among all of Oxfordshire's 43 libraries. Failing that, they are urging the council to move Sonning Common up to the second tier of provision where it would have two-thirds, as opposed to one-third, professional staff support. [n](#)

## Come and make it your own

The village's youth club, at Chiltern Edge School, has been relaunched as ClubSC with the help of new funding.

The new youth leaders, Lesley Mather and Natalie Guppy, know that the club's success will depend on members knowing what they want to happen at the club and then getting involved in everything on offer.

According to Lesley: "It's your club with your ideas. It's your place to be – make it your own."

ClubSC is now open for 10 to 13-year-olds on Wednesdays and for 14 to 16-year-olds on Thursday evenings, from 7 to 9pm, for 50 weeks per year.

It provides a safe and secure environment to socialise and make new friends while listening to music, playing pool and visiting the tuck shop - all for just 50p per night.

The reopening of the youth centre has been achieved through the hard work of a committee of volunteers who have managed to secure £24,350 funding for one year only from the Big Society fund.

This is for start-up costs, including the re-decorating and re-furbishment of the club, and will also cover the employment of a youth manager and support worker for one year.

Sonning Common Parish Council has allocated a £4,500 grant for the next two years. Chiltern Edge Community Association (CECA) has given

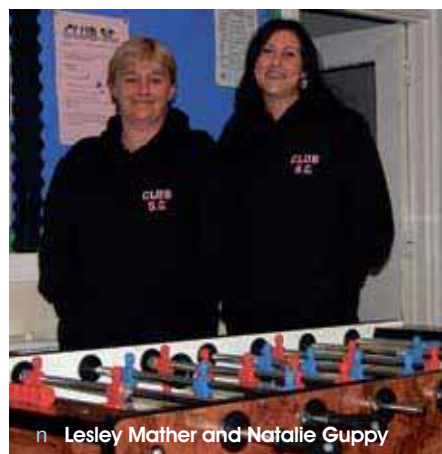
£500 and will match fund any future fund-raising activities, up to a further £500.

It will be a challenge to raise the level of funding required to keep the club open in future years and the new management committee will be looking for financial support from local businesses and organisations.

To volunteer to help run sessions at the club or to support fund-raising initiatives, please contact: Lesley Mather at [clubsc@hotmail.com.uk](mailto:clubsc@hotmail.com.uk)

Read more about ClubSC on Facebook: [ClubSCsonningcommon](https://www.facebook.com/ClubSCsonningcommon)

Email: [clubsc@hotmail.com.uk](mailto:clubsc@hotmail.com.uk)



[n](#) Lesley Mather and Natalie Guppy



# We need a new editor. Is it for you?

After two and a half years as editor of Sonning Common Magazine, Ros Varnes has decided to step down. So, the committee is searching for someone to take on this important role in our community.

Is it something that appeals to you? If so, please contact Geoff Adams, magazine chairman, on 0118 972 2134 or e-mail [geoffrey.adams5@btopenworld.com](mailto:geoffrey.adams5@btopenworld.com) or drop a note in to 1 Woodlands Road.

What does this voluntary job involve? It involves planning and producing each issue, in consultation with members of an editorial group and the professional designer.

The editor decides on the focus of each issue and commissions and collates articles and photographs and edits all contributions. Writing copy is also an important part of the job.

The editorial group, chaired by the editor, provides excellent support in planning,

writing and collecting contributions. This group could be expanded and assistant editors appointed, if the new editor so desired.

The magazine is published six times a year and its circulation is approximately 1,900.

Sonning Common Magazine is a not for profit organisation and its aim is to provide information, entertainment and interest for the residents of Sonning Common.

It is neither party political nor a campaigning organisation. Rather it seeks to provide balanced commentary on current village issues and information about future plans.

The editor is appointed by the committee and then becomes a full member of the committee.

Please give serious thought to taking on this very important role in our community. n

**GEOFFREY ADAMS**  
Chairman, Sonning Common Magazine



## New distribution manager for magazine

The magazine committee is delighted to welcome Helen Gavin as the new distribution manager for the magazine.

Mother-of-three Helen lives in Woodlands Road and is keen to get to know more people in the village.

A new distribution manager was required since Geoff Adams is now magazine chairman.

Anyone with queries or concerns about distribution should now contact Helen (see details on page one). n

# Sonning Common Magazine is on the web!

We have taken our first step to introduce an electronic version of the magazine - to supplement, not replace, paper copies.

Electronic copies of the magazine, from June/July 2010 to December/January 2012, can now be accessed by people all over the world who have an interest in Sonning Common.

Eventually we hope to develop the web site to deliver more up-to-date information than is possible with a bi-monthly publication and to allow people to add comments and suggestions. However, for the moment, we will have just copies of recent editions.

**The site can be accessed at:**  
[www.sonningcommonmagazine.org](http://www.sonningcommonmagazine.org)

Please inform your friends and relatives if you think they will be interested in this latest development and let us know what you think.

**Email:**  
[chairman@sonningcommonmagazine.org](mailto:chairman@sonningcommonmagazine.org)

**Phone:**  
Geoff Adams on 0118 972 2134 n





**EVERYTHING  
IN THE GARDEN**

Established 1985  
Now in Stoke Row

*All types of design, construction,  
maintenance and improvements.*

**Tel: 01491 641311  
Mob: 07810 112411**



**01491 682412  
07808 162985**



Established Before 1879

**TOMALIN  
AND SON**

**FUNERAL DIRECTORS**  
INDEPENDENT FAMILY RUN FUNERAL SERVICE

**ANDERSON HOUSE**

**38 READING ROAD • HENLEY-ON-THAMES**

**Telephone: 01491 573370**



Pre-paid Funeral Plans  
GOLDEN CHARTER

**E. T. Sheppard**

**MONUMENTAL  
MASON**  
SINCE 1940

Brochures on request or visit our Showroom at:

**36 Reading Road • Henley-On-Thames**

**Telephone: 01491 574644**

**YOUR NEW LOCAL  
MoT TEST STATION**  
EST 1998

**HENNELL VEHICLE  
SERVICES**



- • MOT TESTING
- • SERVICING & REPAIRS
- • ENGINE DIAGNOSTICS
- • VEHICLE AIR CONDITIONING
- • LASER FOUR WHEEL ALIGNMENT

**BOOK YOUR MoT NOW**

**Tel: 01491 628866**

[www.hennellvehicleservices.co.uk](http://www.hennellvehicleservices.co.uk)

Unit 19 Greys Green Business Centre  
Rotherfield Greys, Henley-on-Thames  
Oxon RG9 4QG



**JJC Electrical Services Limited**

Professional, Reliable and Local

**Sonning Common Electrician**

**Jerry Cole**

**Telephone: 07834 346 487**

**E-mail: [jjcelectservltd@tiscali.co.uk](mailto:jjcelectservltd@tiscali.co.uk)**

**Website: [www.jjcelectservltd.co.uk](http://www.jjcelectservltd.co.uk)**

- Fault diagnosis, repair and rewires
- New installation work
- Fuse board changes
- Lighting advice and installation

**ELECSA**

Approved Contractor

[www.elecsa.co.uk](http://www.elecsa.co.uk)



**T'ai chi for Health**

**Kidmore End War Memorial Hall**  
Reades Lane, Sonning Common

**Tuesday 9.30-10.30**  
During term time

Chen style Tai chi in a friendly informal class  
Improve your stamina, balance,  
strength & co-ordination

For further information  
please ring Debbie on 07802 347943  
[www.debbiepage.org](http://www.debbiepage.org)





## Functional Physio



Sonning Common Health Centre  
Chartered Physiotherapists  
Jo Pereira MCSP  
Catherine Matthews MCSP

• Flexible appointments

Clinic: 01189 722 745

[www.functionalphysio.co.uk](http://www.functionalphysio.co.uk)

Back pain  
Neck pain  
Sports injuries  
RSI  
Joint pain  
Sprains  
Strains  
Headache  
Pre/Post op  
Pre/Post natal  
Pilates

## T.C. FULLER PLUMBING & HEATING

• Installation • Maintenance • Service • Repair  
Boiler replacement, heating system upgrade & adaptations, power flush.  
Hot water cylinder replacement.  
All plumbing work undertaken.  
Bath/Shower rooms, water softeners-salt supplied.  
• No call out charge • Free estimates • Fully insured

Tel: 0118 9724097  
Mob: 07800 914 880



## KATHRYN FELL PHOTOGRAPHY

Kathryn Fell is a local and mobile photographer producing fun, relaxed and contemporary results.

Book your sitting now to avoid disappointment.

A framed photo or canvas makes a perfect gift for Christmas.

★ Family Portraits ★ Mum and Baby Portraits ★ Children's Parties ★ Pet Portraits  
Celebrations ★ Product pack shots - for websites and marketing collateral

Take the hassle out of visiting a town studio and let me come to you in your home, a venue or agreed location such as a park.

[www.kathrynfellphotography.co.uk](http://www.kathrynfellphotography.co.uk) - for more info or to book a sitting, please contact [kathrynfellphotography@hotmail.co.uk](mailto:kathrynfellphotography@hotmail.co.uk) or call 07958 371 770

## SPICK 'n' SPAN DOMESTIC CLEANING SERVICE

- Reliable, friendly & trustworthy.
- Weekly / Fortnightly cleans
- One-Off Cleans
- All equipment and supplies provided.

Competitive Rates

Please call Louise for a free quotation.

**Tel: 0791 429 5167**



**Property Maintenance**  
Building, Decorating & Cleaning Services

- Office Cleaning •
- Painting & Decorating •
- New Kitchens •
- New Bathrooms •
- Wall & Floor Tiling •
- Plumbing & Heating •
- Alterations & Renovations •
- Carpet Cleaning •

**One Stop**  
PROPERTY MAINTENANCE COMPANY

One Stop Property Maintenance  
T: 0118 9723644 • M: 07770 607876  
e: [info@osprms.co.uk](mailto:info@osprms.co.uk) • [www.osprms.co.uk](http://www.osprms.co.uk)

Family Hairdressing  
In the comfort of your own home

Ring Maureen on:  
**0118 972 1074**

Fully qualified in all aspects of hairdressing

## Stafford & Son Local Garden & Building Maintenance Services



Offering services in all aspects of garden and grounds maintenance, be it large or small.

Interior and exterior building maintenance, including gutter repairs and clearing.

General handyman / "man with van" services. All jobs considered at competitive rates.

Andrew Stafford

Call 01491 642191

Mob. 07899980137



## Want to enrol on an adult education course in the new year?

Brochures for 2012 courses are now available from Oxfordshire Adult Learning.

Website: [www.oxfordshire.gov.uk/adultlearning](http://www.oxfordshire.gov.uk/adultlearning)

Phone: 0845 3510646

The 2012 Spring term brochure from Reading WEA (Workers' Educational Association) is also available.

Phone: 0118 946 4137



## Following in the footsteps of the Incas

Sonning Common Primary School teacher Judith Walmsley is to trek 40km along the Inca trail in Peru to raise money for charity.

The mother-of-three has chosen the Sue Ryder Hospice at Nettlebed as her nominated charity.

She said: "There are so many areas that need ongoing financial support at Sue Ryder so please consider sponsoring me at: <http://uk.virginmoneygiving.com/Judith.Walmsley>.

## Library news

The library will hold a special Christmas Storytime on Saturday, 17 December at 10am with seasonal stories, crafts and refreshments.

The library will close for Christmas at 12.30pm on 24 December and re-open on Wednesday, 4 January at 2pm.

We'd like to wish everyone a happy and peaceful Christmas and a hopeful 2012 - and thanks to everyone for their support over the past, very difficult, year.

**Rosemary Dunstan**  
Library manager



## Put on your dancing shoes

Would you consider taking up circle dancing as a hobby? Sonning Common's circle dancing group is keen to attract new members.

As its name suggests, circle dancing is dancing in a circle to music of enormous variety. Many of the dances come from Europe, the Balkans, or Israel and some come from South America.

But there are also new dances, choreographed to pop or even classical music.

Ros Jennings, from the group, said: "There are no mistakes, only variations! By the time we end the session there is a great feeling of well-being and inner peace.

"If you would like to join us, do come along - no partner necessary - just comfortable shoes."

The group meets every first Sunday of the month at Christ the King Church Hall, in Sedgewell Road, from 3.30pm to 5pm. The first session is free.

For more information, please contact Ros Jennings on 01491 874220.

## Carols in the village hall

Village singing group Nottakwire will retell the Christmas story with A Lilt of Peace - an original work by Elaine Williams, co-founder of Nottakwire.

There will also be Christmas carols with audience participation - words provided.

Performances will take place on Saturday 17 and Sunday 18 December in Sonning Common Village Hall at 3pm.

Mince pies and hot drinks are included in the ticket price of £5 per adult and £2 per child under 13. Tickets are available from group members, Occasions on Wood Lane or the box office on 0118 972 3586.





## Peppard Revels have some dates to share for next year.

The following film nights are  
planned:

**Friday 20 January**  
**SHAKESPEARE IN LOVE**

**Friday 17 February**  
**FOUR WEDDINGS AND A  
FUNERAL**

**Friday 23 March**  
**MADNESS OF KING  
GEORGE**

Doors to Peppard War Memorial  
Hall open at 7.15pm. Tickets, priced  
£10, for supper in a bowl, a glass of  
wine and the film, are available from  
Geoff Pitcher on 0118 972 3050. See  
[www.peppardrevels.org.uk](http://www.peppardrevels.org.uk) or email  
[peppardrevels@mac.com](mailto:peppardrevels@mac.com) for further  
information.

Peppard Revels on Peppard  
Common will take place on the first  
weekend in June 2012 - the Queen's  
Diamond Jubilee weekend - with  
Peppard Olympics, films, dinner and  
a combined church service.

## Run for charity

The annual Lions' 10k charity road run  
will take place on Sunday 8 January in  
Woodcote.

Sir John Madejski is due to start the event, organised  
by Goring, Woodcote & District Lions Club, and  
present prizes to the winners.

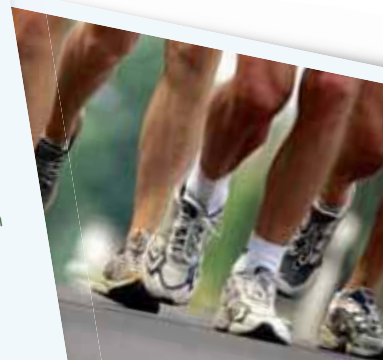
As with previous years, the race will start at 10.30am  
between the entrance to Langtree School and  
Woodcote Village Hall, Reading Road, Woodcote  
RG8 0RA.

Free hot drinks will be provided for all runners and  
there will be water stations en-route and at the finish.  
Limited changing and toilet facilities are available  
in the village hall.

A team from St John Ambulance will be providing first  
aid cover.

Entrants must be at least 15-years-old. Details and  
entry forms are available to download from [www.lions-gwd.org.uk](http://www.lions-gwd.org.uk)

The entry fee is £12 when paid in advance (£10 for  
affiliated club runners). The late registration fee is £15,  
payable before 10am on race day, if space allows.



## Don't miss Santa

Father Christmas is coming back for his annual tour  
of Sonning Common with the local Lions group.

He will be touring the village on Thursday 8, Friday 9 and  
Wednesday 14 December between 7pm and 9pm. Look out for  
his distinctive sleigh playing Christmas carols.

Jon Solman, from The Lions Club of Goring, Woodcote and  
District, said: "Last year Father Christmas's travels were curtailed  
by extremely bad and icy road conditions. However, this year  
the Lions have prepared Santa's sleigh for his 30th successive  
tour around nominated local villages."

Donations from the street collections will be used  
to support many local, charitable causes.

## Have festive fun at the Christmas lunch

Preparations are well underway for this year's Sonning  
Common Christmas Lunch to be held again in the village  
hall on Christmas Day.

The lunch is for people who are on their own or for couples  
who find all that shopping and cooking a bit much.

Tickets, costing £10 a head, are available from Jill Vallis on  
0118 972 3251 or Chrissie Phillips-Tilbury on 0118 972 1058.

Help will be available with transportation, if required.

## Fancy treading the boards?

Woodley Light Operatic Society is looking for new  
members to take part in Jekyll & Hyde - the musical,  
to be staged in June 2012.

Rehearsals will take place on Tuesday evenings at Rivermead  
School in Woodley between 7.30pm and 10pm. They begin  
on 3 January.

For more information see the website: [www.wlos.co.uk](http://www.wlos.co.uk)



## Guitar Lessons for Beginners

*Electric/ Acoustic  
Contemporary Music*

Contact Ed Fort: 07949 352663  
edward.fort8@googlemail.com

## Pilates Classes

Caversham, Emmer Green and Sonning  
Inc. Pink Ribbon Program for Post-Op Breast Cancer

[pilates4u@suespilates.co.uk](mailto:pilates4u@suespilates.co.uk)

[www.suespilates.co.uk](http://www.suespilates.co.uk) 07939 232665



[www.avialandscapes.co.uk](http://www.avialandscapes.co.uk)

- Design and Build • Maintenance • Brickwork
- Patios • Decking • Water Features • Irrigation
- Fencing • Plant Supply.

T: 01189 722 181 E: [tony@avialandscapes.co.uk](mailto:tony@avialandscapes.co.uk)

## COLLINS, DRYLAND & THOROWGOOD LLP SOLICITORS

announce that as from 4th October 2010

Mrs Wendy Holmes will be working from our office at  
**12 Hart Street Henley-on-Thames RG9 2AU**

Telephone: 01491 572323  
email: [wendyholmes@collins-dryland.co.uk](mailto:wendyholmes@collins-dryland.co.uk)

## David Shailes

PLUMBERS & DECORATORS

- Bathroom Suites, Toilets, Basins
- Showers, Radiators and Repairs
- Full Interior &
- Exterior Decorating
- Wallpapering

10% DISCOUNT OFFERED  
WITH THIS ADVERT

CALL TODAY FOR A FREE ESTIMATE  
Tel: 0118 934 5029 Mob: 07708 602442  
email: [david.shailes@ukf.net](mailto:david.shailes@ukf.net)

## HEIGHTS Tree Care

- All Aspects of Tree Work
- Hedge Cutting
- Private and Commercial

Fully Qualified Professionals  
£5 Million Public Liability Insurance

Laurence Williams

Phone: 0118 9484274

Mobile: 07813 586 735

Email: [info@heightstreecare.co.uk](mailto:info@heightstreecare.co.uk)

Web Site: [www.heightstreecare.co.uk](http://www.heightstreecare.co.uk)



## Computer Frustrations?

*Friendly local help with PC problems,  
upgrades, wireless,  
broadband and networking.*

*Free advice, reasonable rates.*

**Call David on 07980 129364**

*or e-mail:*

**[help@computerfrustrations.co.uk](mailto:help@computerfrustrations.co.uk)**



**Interior & Exterior Decorating  
Plastering, Artexing, & Coving  
Solving Artex problems / Floor & wall Tiling  
Kitchens, Bathrooms, and P Certified Electrician  
COMPLETE HOME IMPROVEMENTS**

CBT Registered / 30 Years Experience / NHBC Awarded

Adrian Brown

Tel: 0118 9721442 / Sonning Common / Mobile: 07880 542363

Email: [textureplus.adrian@btopenworld.com](mailto:textureplus.adrian@btopenworld.com)

Website: [www.textureplus.co.uk](http://www.textureplus.co.uk)





Oak framed garages and outbuildings to enhance your property. Garden rooms, oak furniture and joinery, all made to your exact requirements.

Oak timber for builders and DIY



info@andrewpageoak.co.uk 01491 828207  
www.andrewpageoak.co.uk

## wood lane dentistry



Vik Chugani BDS MFDS RCSEdin MSc  
Richard McQuillan BDS

- Your local family friendly practice
- Routine general dentistry
- Affordable dental plans with Denplan
- Children seen on the NHS
- Tooth whitening
- Cosmetic dentistry and Implants
- Ample free parking

Now taking on new patients

Saturday and evening appointments available

**HAPPY HEALTHY SMILES ...**



Wood Lane Sonning Common Reading Berkshire RG4 9SJ  
www.woodlanedentistry.co.uk Telephone 0118 9722626

## A.S HEATING & PLUMBING

### Heating & Plumbing Services

#### Your Local Reliable Plumber

All Plumbing, Heating and Gas works.

Boiler Replacement Specialist.

Powerflushing. New Central Heating Installations

For a free quote and advice please  
call Andy on 07760 156654  
or 07747 121796



## ROOFING

## SERVICES

### A GORDON

*Specialist in Slating,  
Tiling and Flat Roofs*  
All work guaranteed



Advanced Level  
City & Guilds



Telephone:  
**01491 576 463**



**Foster Interiors**  
*The Local Soft Furnisher*  
**CURTAINS**  
**UPHOLSTERY & LOOSE COVERS**

Made to the highest standards from an extensive range of fabrics brought to your home.

Complete fitting and advisory service. Curtains hung and dressed, ensuring complete satisfaction – Most competitive prices

**Telephone: 01491 680291**  
*for reliable and personal service*

## PODIATRY CLINIC

Professional treatment & advice for your feet

Contact

**Heidi Snookes-Owen**

**PODIATRIST/CHIROPODIST**

B.Sc., D.Pod.M., S.R.Ch., M.Ch.S.

HPC REGISTERED

**0118 972 4742**

## CERAMIC WALL & FLOOR TILING

Adhesive / Grout / Trims Supplied  
Floor Levelling & Plastering  
Free Estimates & Advice

Call Mick 0118 901 1777 / Mobile: 07841 586003

## A.SIMMONITE

PAINTERS & DECORATORS

GUTTER REPAIRS & REPLACEMENT

**FREE ESTIMATES 0118 972 2667**



A child's first steps into education within a caring environment

We are a small, friendly pre-school caring for children from 2 years 6 months to 5 years in a beautiful village setting. Various sessions available.

We are OFSTED inspected and registered for Early Years Funding.

**For more information, please call Louise on 0118 924 2740**

Registered Charity number 104-6030  
The Parish Rooms, Wood Lane, Kidmore End, Reading, RG4 9BB.

# VISIONS OF God

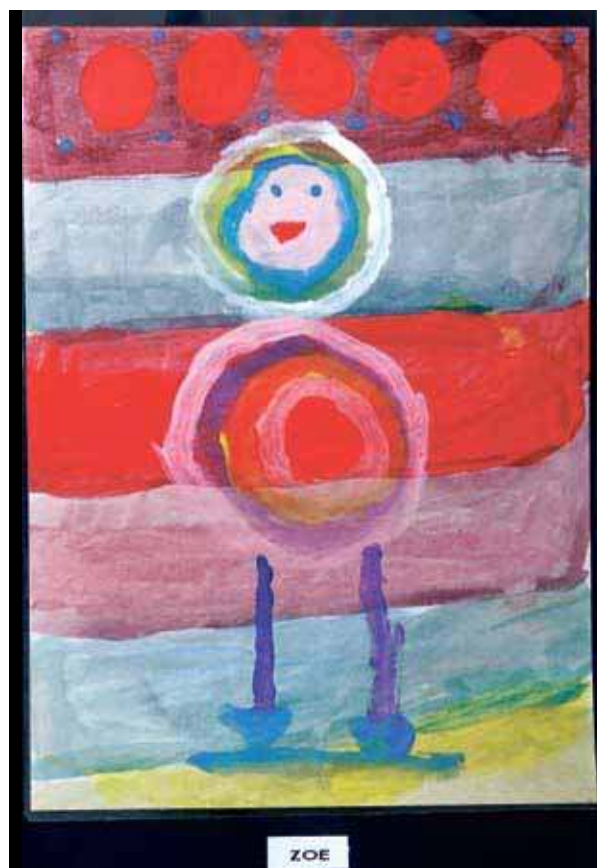


As part of an innovative project, year three children at Kidmore End Primary School were asked to paint their idea of how God might look. And here are the stunning results.

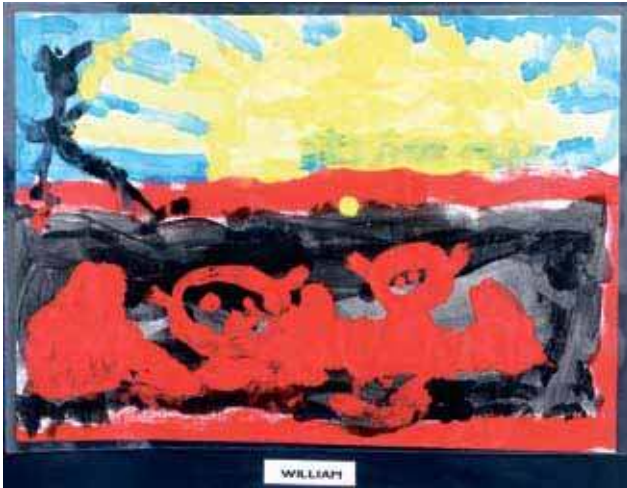
Visions of God, by children aged seven and eight, is currently on display in the village hall.

Each painting is different. Many are abstracts. Some include figures. But all are painted in bright, joyful colours.

Class teacher Richard Stainthorp said: "It was a fascinating exercise. A lot of what the children produced was completely unexpected but they all had a rational explanation for how they came up with their ideas."







WILLIAM



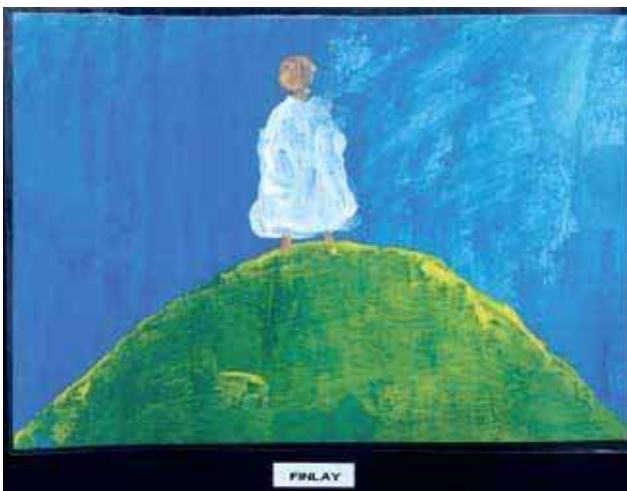
MAX



LUKE



RHYS



FINLAY



GRACE





High quality education and child care under the Early years foundation stage (EYFS) for children 4 months to 5 years

- Good OFSTED report
- Pre-school sessions available
- Open all year, Monday to Friday, 7am to 7pm
- Flexible hours
- Early years education grants available
- Curriculum includes French, Music & Movement and Thames Valley Gym
- Small friendly and personal care in Sonning Common

For further information, please ask for the manager on 0118 972 4783, or visit our website.

[www.alphabetdaynurseries.com](http://www.alphabetdaynurseries.com)  
 emails: [info@alphabetdaynurseries.com](mailto:info@alphabetdaynurseries.com)

# TradeMark<sup>TM</sup>

---

WINDOWS ♦ DOORS ♦ CONSERVATORIES  
 FASCIA ♦ SOFFITS ♦ GUTTERING ♦ CLADDING

---

**Use your Local Installer with 25 years experience**

**For a FREE quotation  
 Call Mike Dockree on  
 07785928190 or 0118 972 4376**

**All window and door installations carry a 10 year guarantee and the finished product is independently inspected with all certificates**




---

WINDOWS ♦ DOORS ♦ CONSERVATORIES  
 FASCIA ♦ SOFFITS ♦ GUTTERING ♦ CLADDING

---

## CAVERSHAM AERIAL SERVICES



**0118 967 3596**

Digital TV aerials, Sky, Sky HD, Freesat and freeview  
 DAB & FM aerials

**14 Odiham Avenue RG4 6PU**  
[Cavershamaerials@gmail.com](mailto:Cavershamaerials@gmail.com)  
[www.caversham-aerials.co.uk](http://www.caversham-aerials.co.uk)

### HELPLINE LANDSCAPE SERVICES

Landscaping - Design, Construction, Garden make over,  
 Groundwork - Clearance, Footings, Drainage, Grading,  
 Timber work - Gateways, Decking, Arches, Pergola, Gazebo,  
 Fencing - Panel, Close Board, Wire mesh, Stock fence,  
 Gardening - Mowing, Weeding, Pruning, Clearance,  
 Tree work - Felling, Lopping, Pruning, Clearance,  
 Driveways - Gravel, Paved, Brick, Concrete,  
 Ponds - Water features, Ponds, Rills,  
 Patios - Slab, Stone, Pavers, Brick,  
 Log's for sale - Cut and split to size.

Based in Sonning Common  
 Tel / Fax: 0118 9721342  
 Email: [chriscolbeck@btinternet.com](mailto:chriscolbeck@btinternet.com)

*Autumn Leaf*

## PET COUNTRY SUPPLIES

### We stock all types of

- ✓ Animal Feed
- ✓ Frozen Meat
- ✓ Farm Feeds

### We Stock Products for

- ✓ Animal Well Being
- ✓ Wild Birds
- ✓ Ponds
- ✓ Farm Animals
- ✓ Domestic Animals
- ✓ Wild life
- ✓ Toys and Beds

We have been trading in the village for over 40 years  
 We have old fashioned friendly Service  
 We can't stock everything but we can get most things  
 for your pet! We deliver free on orders over £25.00  
**COME AND SEE US !!**

**43a Wood Lane**

Sonning Common RG4 9SJ

**0118 9723495**

Email [interestedin@petcountrysupplies.co.uk](mailto:interestedin@petcountrysupplies.co.uk)  
[www.petcountrysupplies.co.uk](http://www.petcountrysupplies.co.uk)

Open.....Mon to Sat 9.am to 5.30pm (5pm Sat)  
 9am to 4pm Weds  
 Closed all day Sunday and Bank Hols

**You may be surprised  
 we now stock**



Also We Sell  
 MEMBERSHIP for  
**SHIPLAKE & BINFIELD  
 ANGLING CLUB**



# BROOK HOUSE FURNITURE



LIVE



DINE



SLEEP

FURNITURE BARN, MANOR FARM, ROTHERFIELD PEPPARD, RG9 5LA  
SATURDAY 10AM – 5PM, SUNDAY 11AM – 4PM  
OR BY APPOINTMENT

HENLEY SHOWROOM, 5 READING ROAD, HENLEY, RG9 1AB  
MONDAY – SATURDAY 10AM – 5PM,

WWW.BROOKHOUSEINTERIORS.COM  
01491 410098

**Beville**  
ESTATE AGENCY

*Providing a complete property service*

Residential & Probate Valuations

Development & Planning Advice

New Homes Financial Advice

*Personal and professional service with  
in depth local knowledge*

**Contact us for a free valuation**

**0118 924 25 26**

**Email: [info@beville.co.uk](mailto:info@beville.co.uk)**

28 Peppard Road, Sonning Common,  
South Oxfordshire RG4 9SU

[www.beville.co.uk](http://www.beville.co.uk)

## WEE-COT SEATING

*Upholstery, Loose Covers,  
Replacement Cushions, Chair  
Caning, French Polishing  
& Furniture Repairs*

**LIZANNE SMITH**

**Tel: 0118 972 4560**

## Call My Driver

***Friendly & Reliable***

***Taxi Service***

**Based in Sonning Common**

**07796 688477**

# Security tips for Christmas

While the Christmas period promotes goodwill and the giving and receiving of presents for some, it provides an extra incentive for taking for others. Thieves and burglars often see the holiday season as an ideal time to do a different type of Christmas shopping.

Here are a few tips to ensure your home and possessions are kept secure over the Christmas and New Year period.

- 1 If you have a Christmas tree that's visible from outside, don't display wrapped presents underneath it until Christmas Eve, and then only if the house is occupied.
- 2 Burglars know all the places to look for hidden door keys near the front entrance, so, don't hide spare keys under doormats, rocks, flowerpots or on door or window ledges. Instead, give a spare key to a trusted neighbour.
- 3 Keep your curtains and blinds closed at night. If you are going out for the evening invest in some inexpensive timers, connected to lights, to give the impression that someone is at home.
- 4 If you want exterior Christmas lights do not use an extension lead that prevents a window or exterior door from being fully closed and locked. Install an exterior socket, if there is no other secure option.
- 5 Secure garages and sheds as these are often targeted by thieves looking for bikes, tools or garden tools. Also make sure that any garden tools, ladders etc. are not left lying around where they could be used to force an entry into your home.
- 6 Deter would-be criminals by using a motion sensor floodlight, or even outdoor Christmas lights, to highlight the exterior of your home and make approaching it too conspicuous for a burglar.
- 7 If you are going away over the Christmas period then plan ahead. Cancel any regular deliveries. If delivered mail can be seen through a glass door panel then screen it or arrange for a trusted neighbour to remove it. You could arrange for a friend or neighbour to park on your driveway to give the impression that someone is at home.
- 8 Don't leave descriptive messages on your answer phone saying you're away for the holiday. Burglars love to hear they have plenty of time to break-in!
- 9 Protect your identity by always disposing of credit/debit card receipts - and other paperwork which contains personal information - in a secure way, shredding, if possible.
- 10 When Christmas shopping, try to be aware of your personal possessions such as wallet, purse, mobile phone, or handbag and keep them secure.
- 11 After it's all over, dispose of gift packaging and gift boxes in a careful way. Leaving empty boxes outside, from expensive new items, advertises what's inside your property.
- 12 Finally, make sure your house is a 'hard target' by having good quality deadbolt locks fitted. Also replace flimsy strike plates, secure exposed hinges, fit window locks and install a door viewer or alarm system.

A Neighbourhood Watch  
Co-ordinator



## HEATH & WATKINS

**HARDWARE, PAINT, TOOLS, GARDEN ACCESSORIES, BEDDING PLANTS  
AND SHRUBS, PRE-PACKED COAL THROUGHOUT THE YEAR**

**MAIN AGENTS FOR SUTTONS SEEDS.  
SHEARS HOLLOW-GROUND & SHARPENED.  
ALL TYPES OF KEYS CUT.**

**CYCLE SPARES & REPAIRS & EVERYTHING ELECTRICAL**

**41A WOOD LANE, SONNING COMMON  
☎ KIDMORE END 0118 972 2107**

## Mr FixiT

**Repairs & Maintenance for almost anything!**

All building maintenance and repairs, interior / exterior.  
Decorating, Floor / Wall Tiling, Plumbing, Electrical,  
Woodwork, Glazing.

Specialist Paint Effects and sympathetic restoration  
for older properties.

Kitchens, Bathrooms and Conservatories refurbished.

Landscaping, Patios, Water Features, Fencing,  
Hedge and Tree Cutting.

Sheds and outbuildings repairs and maintenance

No Call-Out Fee and Free Estimates

**07752 759908**

**gp** gunningplumbing.com  
• plumbing • heating • gas •

**ALL DOMESTIC PLUMBING, HEATING, & GAS WORK  
INSTALLATIONS, REPAIRS, & EMERGENCIES**

**CAVERSHAM BASED  
GAS SAFE REGISTERED ENGINEER  
SERVING READING & THE SURROUNDING AREA**

**CALL ANDREW ON 07815 304 931**

**www.gunningplumbing.com**





# Capture & keep

## Charcoal drawings of your loved ones

A drawing or painting of a loved one or a cherished pet can be a great way to capture and keep a moment in time.

Artist Kenny Gates undertakes commissions for portraits copied from photographs. Most of his work is in charcoal but he can also paint in oils or watercolours, if required.

Art has been a life-long hobby for Kenny during which time he has produced everything from abstract and scenic art to portraits of family and friends.

"To help me produce a portrait I need a good quality, close-up photograph of the subject. The better the photograph, the better the drawing," says Kenny. "Having a clear view of the eyes is particularly important."

Portraits are provided on A3 sized paper (297x420mm) ready to be framed. If you are interested in commissioning a work please contact:



### CAPTURE & KEEP

27 Woodlands Road, Sonning Common RG4 9TD

Phone: 07752 299990 Email: captureandkeep@gmail.com

If you would like to advertise your business in this way please contact John Pearman on 0118 972 2381 / 07794 291776 or write to Business Profiles, 50 Kennylands Road, Sonning Common RG4 9JT email: advertising@sonningcommonmagazine.org

## Do you know someone that needs care?

Our Sonning Common team offers specialist Live-in Care, enabling those who wish to remain within the comfort of their own home the opportunity to do so.

Living one-to-one support our Live-in Carers are able to balance independent living with bespoke care needs by assisting with:

- personal care
- companionship
- housekeeping

Find out how we can help you, please call  
**0808 180 1023** or visit **www.helpinghands.co.uk**



**Helping Hands**

Established since 1989



**JOHN QUINN BUILDERS**  
Easter Barn Sonning Common RG4 9NU

Small/Large House extensions  
Interior Alterations/Loft Conversions  
Exterior Buildings/Brickwork/Patios  
Very Competitively Priced  
Free estimates/Surveys  
Loft Conversions

Friendly Family Business established 40 years  
07850 720492/01189 724072

**Jefferies Consultancy Services Ltd.**  
**Accountancy Services**  
Specialising in South Oxfordshire and Reading

- Self-Assessments
- Business Advice
- Corporation Tax Returns
- Accounts
- Payroll
- VAT

Excellent customer service & free initial consultation  
Tel: 0118 9722611  
Email: keith.jefferies@jcslimited.co.uk

**MEB'S Decorplus**  
Free Estimates



**Maryella Brown**  
General Buildings Contractor  
Decorating to Complete Home Improvements  
Sonning Common

Tel: 0118 9721442 or Mobile: 07920 092875

Email: [mebs.decorplus@btoopenworld.com](mailto:mebs.decorplus@btoopenworld.com)

Website: [www.mebsdecorplus.co.uk](http://www.mebsdecorplus.co.uk)

BUY - Cox, Russet & 20 more varieties

# APPLES

+ Christmas Gift Boxes + Mail Order +

**OPEN**  
Wed to  
Sun  
10am-  
6pm

**Cross Lanes Fruit Farm**  
Mapledurham, RG4 7UW  
Tel: 0118 972 3167



Join A4074 to Reading at Cane End, first right, right again.  
Farm shop is on the road to Goring Heath.  
[www.crosslanesfruitfarm.co.uk](http://www.crosslanesfruitfarm.co.uk)

## DK Builders

20 Years Experience  
Brickwork - Extensions  
Garden Walls - Patios  
.....and much more  
Call Daren on 07951 736745  
for a **FREE ESTIMATE**

## Property Consultants

Shops, Offices, Industrial, Investments  
Valuations, Rent Reviews, Lease Renewals

## Highmoor Cross

George Chilvers and Nigel Price FRICS

**0118 947 4600**

[www.highmoorcross.co.uk](http://www.highmoorcross.co.uk)

*Time 4 Pilates*



Want to look and feel great!!  
Try Pilates - controlled, yet gentle exercise

Classes in Sonning Common area  
Including Ante and Post Natal

Mondays / Tuesdays / Thursdays  
Beginners and Intermediates  
Max 12 in Group (6 in Pregnancy classes)  
Private sessions also available

**Christine Brook** - Member of Body Control Pilates® Association  
Ring 07789 717017 or email [chris@time4pilates.co.uk](mailto:chris@time4pilates.co.uk)  
Website at [www.time4pilates.co.uk](http://www.time4pilates.co.uk)

**CURTAINS,  
BLINDS, PELMETS,  
TIE BACKS ETC.**

**ALL AT COMPETITIVE  
PRICES**

**CALL CAROLINE ON  
0118 954 2448**

**OR  
0781 561 0007**

# AUSTIN HARRIS

V.H.S.

**T.V. & VIDEO  
RENTAL**  
**RADIO & T.V.  
SALES / SERVICES**



**REPAIRS TO  
DOMESTIC APPLIANCES**

**KIDMORE END 0118 972 3098**





## Don't mess up the dog bag bin

The public-minded citizens who organise the Millennium Field provide a box of plastic bags for the use of dog walkers so that dog faeces can be collected and not left strewn across the grass, adding, to quote the late Peter Sellers, neither wealth nor beauty to our nation.

I, (being less public-spirited or I would supply my own), use them myself for my rather lavish hound.

Some weeks ago a person left a banana skin in the box, obviously not having the energy to walk 50 yards to the proper bin.

On a later occasion the remains of someone's lunch were deposited. Then, not to be outdone, someone else poured a sticky soft drink into the box, ruining the bags, or, at least, making them extremely unpleasant to use.

I dream of punishments like flogging through the fleet – only nowadays we don't even have a fleet! n

**PETER DAYTON**  
Kennylands Rd

## We would welcome new members

Chiltern Edge Orchestra meets on Tuesdays during term time at Chiltern Edge School.

We are a full orchestra, but are currently short of upper strings (violins) and would welcome new members. We operate in a relaxed environment, seeking to encourage and give our members playing experience in serious, and occasionally, light orchestral music. We perform two informal concerts a year.

Our conductor, Fa Fa Jin, has been a professional cellist and teacher and we have a new leader, Tony Short. Tony has worked with major symphony, opera and ballet orchestras and was a full-time member of the Ulster Orchestra in Belfast for many years.

He is also an adult education tutor in music and a violin teacher at Reading University. The strings, therefore, have expert support from Tony.

Please get in touch if you would like more information.

Ruth Winchester 0118 9722 164 [www.chilternedgeorchestra.org.uk](http://www.chilternedgeorchestra.org.uk) n

**RUTH WINCHESTER**  
Chiltern Edge Orchestra

## Lea Meadow development in question

Despite the chronic economic circumstances and severe shortage of homes, South Oxfordshire District Council has buckled to pressure from some existing homeowners and sought to refuse permission for 80 houses (including 32 affordable houses) on paddock land at Sonning Common.

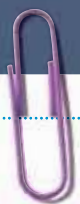
This is despite that fact that the council has agreed to build 1,154 houses shared between the 13 larger villages in south Oxfordshire.

Sonning Common is one of the largest villages with a population of about 4,000 people, only 89 of whom have objected to this application.

All other possible development sites around the village are either within or adjoining the Area of Outstanding Natural Beauty so if houses are not built on Lea Meadow they will need to be built elsewhere and spoil the landscape around the village.

The landowner and his advisers will now be discussing the future development of the site with the council. n

**STEWART LILLY**  
Stewart Lilly Associates  
(agent for the landowner)



## Reminiscing about the past

**I started my education at the primary school then moved on to Henley Grammar School from 1953 til 1958.**

I was born in Newcastle-upon-Tyne but my parents decided to move south to be near relatives, including my paternal grandfather who owned a house in Wood Lane named Tritonville.

My father worked for the Thames Valley Traction Company. I remember how when there was a bus strike we had a lift into Reading in a Rolls Royce!

The shops at that time included Brinds and Brewers (butchers), Kilbys (now the Co-operative), Heath and Watkins and the Post Office where Mr Nickless was in charge. My mother helped there in the background. The doctors were Clay and Hepill. Kews were the bakers. Ellis and Heading delivered milk and Joseys, coal.

My brother Frank was puzzled there were no swans when Swans Garage opened in Peppard Road.

At school Mr Miller was head. He had a son named James. Other staff included Mrs Clayton, Mrs Fisher, Mrs Lockwood and Mr Luke. Happy days.

I am still in touch with Anne de Gruchy (now Finch) who lived with her parents in Kennylands Road, and Judith Coy (née Wadley) still living in Crowsley Way with husband Harry.

I also remember Miss Bonham Carter who lived in Woodlands Road and rode a trike, the Hayden family, including 10 boys, and our neighbour Mrs Webb and son Harry. n

**EVA ALLEN (NÉE BAKER)**  
Eva lived at 18 Grove Road from 1945 until 1961

# Tom Fort

## MARMALADE

Sometime next month (January) a distinctive citrus fruit will arrive from sunnier climes in our shops and supermarkets. The appearance of the Seville orange is a signal for the nation's marmalade-makers to root out giant preserving pans and outsize wooden stirring spoons, gather up jam jars, pull on aprons and get to work.

Anyone who knows anything about how to organise a decent breakfast will tell you that commercial marmalade – with its measly shavings of orange peel as well as the inevitable and dreaded setting agent pectin

– simply will not do. As for the words 'golden' and 'shred', the combination is enough to give me nightmares.

Marmalade has long been a crucial component of my breakfast. For most of my life I relied upon my mother to supply it. Come January she would drop everything else and her house would be filled with the rich, astringent smell of boiling fruit.

Then, a few years ago, came an appalling blow. She announced that, at the age of 91, she was too old to continue. In a moving ceremony, she wrote out her recipe, handed over to me the

pan, spoon and funnel, and made it clear that from now on our roles were reversed.

It was, and remains, a heavy responsibility. I have to supply 30 or so pots for myself and my immediate family, and about 20 or so for my mother, still spreading it on thickly at 96.

When you are making marmalade, everything else – children, wife, work, even fishing – must take second place. If everything goes well, and the result is firm enough not to run but soft enough to quiver when you shake the pot, a deep sense of fulfilment possesses you. If not,

then all is rage and despair.

No, I'm not going to pass on the recipe (two tips though: don't waste your money on preserving sugar because granulated is fine, and add a large spoonful of black treacle to the boil to give a rich, dark hue). And, no, it's no good asking me for some. It's just too precious. n



## Christmas church services

### ST MICHAEL'S CATHOLIC CHURCH, SONNING COMMON

#### Saturday 24 December:

Mass for families with children, 6pm  
Christmas carols, readings and music starting at 11.30 pm, followed by Midnight Mass.

#### Sunday 25 December:

Morning Mass, 10.30 am

#### Monday 26 December:

Morning Mass, 10am

### CHRIST THE KING, SONNING COMMON ST JOHN THE BAPTIST, KIDMORE END

#### Sunday 11 December:

Christingle, St John's, 4.30pm

#### Friday 16 December:

Service of carols and readings, St John's, 7.30pm

#### Saturday 24 December:

Christingle, Christ the King, 4.30pm

Midnight Mass, St John's, 11pm

#### Sunday 25 December:

Family Eucharist with carols, Christ the King, 9.30am

Family Eucharist with carols, St John's, 10.30am

The annual Week of Prayer for Christian Unity will be held between 18 and 25 January.

### ALL SAINTS' CHURCH, ROTHERFIELD PEPPARD

#### Sunday, 4 December:

An Advent sequence of readings and music, 6.30pm

#### Saturday 24 December:

Nativity play and carols, 5.30pm

Holy Communion, 9pm

#### Sunday 25 December:

Holy Communion, 9am

Six lessons and carols, 11am

### SPRINGWATER CHURCH, ROTHERFIELD PEPPARD

#### Sunday 11 December:

Morning service including the children's Nativity play, 10.30am

#### Sunday 18 December:

Carol service and Christingle, 10.30am

#### Sunday 25 December:

Short Christmas Day service, 10.30am





# CHURCH *bloopers*

These extracts appeared in church magazines  
or were announced in church services:

Ladies, don't forget  
the rummage sale.  
It's a chance to  
get rid of those  
things not worth  
keeping around the  
house. Bring your  
husbands.

*Weight Watchers will meet at  
7pm at the First Presbyterian  
Church. Please use large double  
door at the side entrance.*

Miss Charlene  
Mason sang,  
I will not pass  
this way again,  
giving obvious  
pleasure to the  
congregation.

*At the evening service tonight  
the sermon topic will be,  
What Is Hell? Come early and  
listen to our choir practice.*

*The church will host an evening of  
fine dining, super entertainment  
and gracious hostility.*

Next Thursday there will be tryouts for the  
choir. They need all the help they can get.

**Don't let worry kill you off -  
let the church help.**

**Low self esteem support  
group will meet on  
Thursday at 7pm. Please  
use the back door.**

Potluck supper Sunday  
at 5pm - prayer and  
medication to follow.

Scouts are saving aluminum cans, bottles  
and other items to be recycled. Proceeds  
will be used to cripple children.

*Please place your donation  
in the envelope along with  
the deceased person you  
want remembered.*



News from the pupils of Sonning Common Primary School (SCPS)

# WE'VE GOT IT GOING ON



**REPORTED BY:** Fern Pocock, Matt Whitfield, Maya Rees, Suria Warren and Fred Newbold from Year 6

## VALUES

**We have five values:** respect, truth, kindness, politeness and doing your best. Each value now has its own coloured band. Children and adults can nominate others to be awarded one of these bands. We are all trying to get one in each colour by the end of the year.



## KITES KITCHEN

We've got a fantastic, new school dinner menu. On Tuesdays it's Theme Day which means you can have food from different countries. On Thursdays we have Pie Day and our favourite so far is definitely chicken and sweetcorn.

**Yum!**



## SPORTS

On Monday 15 October a well-fought football match took place between Sonning Common and St Mary's of Henley. Altogether there were five matches and in the end Sonning Common won!

Pupils from SCPS have been running in the schools' cross-country series. This time there are races for Years 1 to 6. We have over 75 members in our weekly before-school running club and many of them turned up for their first race ever. We were proud to bring home three golds, two silvers and three bronzes plus lots of team prizes.

In September we sent a strong team of Year 5 and 6 children to Didcot for the South Oxfordshire outdoor athletics competition. We won by more than 300 points over the second placed team. Becky Houghton and Callum Mead were the top two performers in the whole competition.



## STRANGER HELPED BY SCPS PUPILS

In October, two girls from Year 6 saw that an elderly lady had crashed her car into a tree. They rushed to call an ambulance and happily the lady is now recovering well at home.

## MANDARIN LESSONS

Some pupils from Year 5 and 6 have been learning Mandarin with Mr Wu from Highdown School. The children who participate have said that they find it a fun and interesting language to learn.





# Oliver!

**Oliver! - the musical - is to be performed at Chiltern Edge School this year. Maz Baxter, head of drama and dance, is very excited about it.**

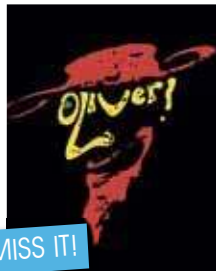
"It features students from all years performing, creating sets, lighting and sound control, props, make-up and back stage. It really is a whole school event," she said.

"The standard of acting is really high this year, and there are some very technical dance routines involved. It should be a really special show."

The stars of the show are mainly from the GCSE drama course, apart from one year 9 student – Guillaume Gougeon – who has the star part of Oliver.

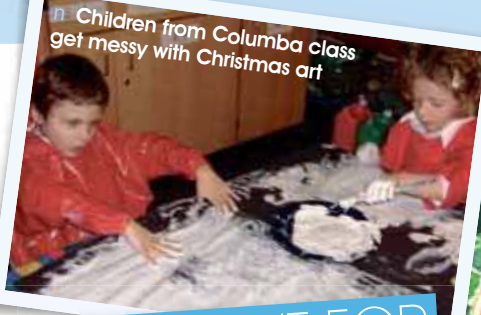
Performances are on 6, 7 and 8 December starting at 7pm. Tickets are available from the main school office.

**Phone: 0118 972 1500.**



MAKE SURE YOU DON'T MISS IT!

n Children from Columba class get messy with Christmas art



ALL WE WANT FOR

# CHRISTMAS

n A beautiful snowman



Pupils at Bishopswood Special School in the village have been thinking about their hopes for the festive season.

Here's what they said they were looking forward to most:

*"Tasting Christmas biscuits".*  
(Jack)

*"A noisy Christmas".*  
(David)

*"Running in the snow".*  
(Spencer)

*"Meeting Father Christmas".*  
(Alice)

*"Hearing Christmas music".*  
(Dylan)

*"Playing in the snow".*  
(Jamie)

*"The crackers".*  
(Marcus)

*"The presents".*  
(Oscar)

*"Dressing up".*  
(Megan)

*"Singing Christmas songs".*  
(Cameron)

From the Columba and Pegasus classes

## JUNIOR

## BOOK REVIEW

### VILLAIN.NET: COUNCIL OF EVIL

By Andy Briggs (suitable for age 11+)



This book review was written by the Mouldy Cheese reading group - Becky Houghton, Tilly Lawson, Izzy Lusted, Oliver Matthews, Fred Newbold and Ellie Underwood in year 6 at Sonning Common Primary School.

This book is about a boy called Jake Hunter who clicks on a mysterious web link and turns into a dangerous super-villain. He downloads special powers, meets a criminal mastermind, and tries to buy a bomb to plant in the earth's core, to hold the world to ransom.

BECKY says: "Andy Briggs did a good job, but overall I didn't like it, and didn't finish it because it was too violent."

ELLIE says: "I didn't finish the book because it turned out to be too violent for my liking."

FRED says: "Andy Briggs has made good use of action and the words are gripping."

IZZY says: "I thought that the book was interesting to start with, but then it got very crazy and too many things were happening at once."

OLIVER says: "I personally thought the book was amazing, but there was a bit of violence so some people might not like it."

TILLY says: "It was quite a good book, but there was too much stuff going on at one time, and I didn't really like it."

Villain.net: Council of Evil is the first title in a series. There is a parallel series by Andy Briggs called, Hero.com. All can be borrowed from your local library. n

# CARPET FITTER

Fitted Carpets & Vinyl Specialist

Underlays & Fixings Supplied

Re-Adaptions & Restretches

Measuring, Estimating & Planning

Carpets Vinyl Amtico Kamdean

**25 YEARS EXPERIENCE**

**MICHAEL HODGSON**

TEL: 0118 901 1777 / MOB: 07841 586003

## THAMES VALLEY GYMNASTICS CLUB

Bird Wood Court  
Peppard Road  
Sonning Common

(Registered Charity No. 1062939)



- ◆ Modern Gymnastics facility with "state of the art" equipment and dance studio
- ◆ Elite/Competitive squad coaching to Regional/National levels
- ◆ General Gymnastics classes for Boys/Girls – all ages/abilities
- ◆ Pre-School programmes
- ◆ Ballet Classes
- ◆ Play Gym for the Under 5s (Tuesday & Thursday a.m.)
- ◆ Gym Birthday Parties
- ◆ Room for hire

For further information, please call in or telephone  
Kevin Cassidy, Club Manager, on 0118 972 4401



**Dean & Milward**

Insurance brokers & financial advisers  
3 Market Place Mews Henley-on-Thames  
Tel: 01491 578259 Fax: 01491 410597

## Motor Insurance

It really is worthwhile asking us for a quote

Instant  
COVER



Professional  
SERVICE



Save  
MONEY



## Computer Problems?

Free quote, no fix no fee, no call out charge

Over 200 happy customers in  
Sonning Common.

Milo and Michael Harper



0118 972 4905

Milo Technical Support  
22 Sedgewell Road

## bespoke kitchens

We have moved to our new  
larger improved showroom at:

Wyevale Hare Hatch  
Garden Centre  
Bath Road  
Hare Hatch  
Twyford  
Berkshire RG10 9SW

Telephone: 0118 940 6600

Fax: 0118 940 6622

Email:  
henley@optiplankitchens.co.uk

Website:  
www.optiplankitchens.co.uk

### OPENING HOURS

Monday – Saturday  
9:00am – 5:00pm

Sundays & Bank Holidays  
by appointment only

- 13 Full displays contemporary and traditional
- Displays featuring Granite, Caesarstone, Solid Wood and Laminate Worktops
- De Dietrich Appliance centre
- Bosch Appliance centre

## OPTIPLAN

The South's Premier Kitchen Manufacturer



- Manufacturer and Retailer – No Middle Men!
- Bring in your own Measurements for an on-the-spot Quote
- Project Managed Installation Service
- 20 Year Guarantee on Furniture

- Quality Kitchens from £3,000 to £30,000
- Kitchens Handmade to Any Size or Colour
- Granite and Corian Worktop Specialists
- Factory Visits Welcome

Over 17,000 satisfied customers in this area

established 1984





- Fully qualified (Part P reg) electrician
- Plumbing • Kitchens and bathrooms
- Landscaping and fencing

**0118 947 7738**

**07717 295679**

**[www.eastonpropertycare.co.uk](http://www.eastonpropertycare.co.uk)**



As Reading's longest established Vauxhall dealer, we offer unrivalled levels of customer service and great value for money. In stock, we have the best selection of new and used Vauxhalls in the area and can guarantee we will not be beaten on price or choice.

**SERVICING  
LOCAL CARS  
FOR OVER  
50 YEARS**

**Sonning Common Vauxhall  
Sonning Common Garage Ltd**

**0118 972 2021**

**[www.sonningcommonvauxhall.com](http://www.sonningcommonvauxhall.com)**

## SHARP BUILDING SERVICES

The local builder for all your building work:

**EXTENSIONS  
ALTERATIONS  
REPAIRS  
TILING**

**Phone Steve on:  
07887 986446 / 01189 724880**

## Sonning Common Pet Care

At Home Pet Care

when you are on holiday or at work

### Cats

Daily visits to clean, feed and pamper

### Small Pets

Home visits to care for your Rabbits,  
Guinea Pigs, Hamsters ,etc

### Dog Walking

Regular or occasional walks

### Puppy Visits

To feed, play, toilet break and clean up

Please call Alison for further information

Tel 0118 9722948 / 07787 114536

AWARD WINNING CARING HOMES FOR OLDER PEOPLE

CARING HOMES



## ABBEYCREST CARE HOME

Sonning Common, Reading RG4 9RG

Abbeycrest is a stunning new care home from the Caring Homes family. Located in the tranquil village of Sonning Common, in the heart of the Chilterns, Abbeycrest provides exceptional residential, nursing, and dementia care for elderly ladies and gentlemen. The home offers a delightful living environment that promotes independence, assists orientation and provides light, bright, homely accommodation.

- New Development With Established Care Team
- 24h Nursing Coverage
- Individual Tailored Plan
- Permanent & Respite
- Garden Rooms
- En Suite Bedrooms
- Restaurant Standard Cuisine
- Specialist Care Design Features
- Abbeycrest Living Events & Activities
- Hospitality & Wellbeing Services

Freephone 0808 137 1479



[www.caringhomes.org](http://www.caringhomes.org)



Dec	<b>FRIDAY 2</b> <b>Nottakwire practice</b> Village Hall 9.30am	<b>SUNDAY 4</b> <b>Sonning Common circle dancing group</b> Christ the King Church Hall 3.30 - 5pm	<b>WEDNESDAY 7</b> <b>Chiltern Edge Horticultural Society - AGM</b> Peppard War Memorial Hall 7.15pm	<b>THURSDAY 8</b> <b>FISH - Pub lunch</b> 11.30am
	<b>FRIDAY 9</b> <b>Nottakwire practice</b> Village Hall 9.30am	<b>FRIDAY 9</b> <b>British Legion - Tea dance</b> Village Hall 2 - 4pm	<b>THURSDAY 15</b> <b>Sonning Common Women's Institute - Christmas surprise. Visitors welcome</b> Village Hall 7.30pm	<b>FRIDAY 16</b> <b>Nottakwire dress rehearsal</b> Village Hall 9.30am
	<b>SATURDAY 17</b> <b>Nottakwire Christmas concert</b> Village Hall 3pm	<b>SATURDAY 17</b> <b>South Chiltern Choral Society - A very English Christmas</b> Chiltern Edge School 7.30pm	<b>SUNDAY 18</b> <b>Nottakwire Christmas concert</b> Village Hall 3pm	<b>SUNDAY 18</b> <b>South Chiltern Choral Society - A very English Christmas</b> Chiltern Edge School 2pm
	<b>MONDAY 19</b> <b>Sonning Common Parish Council</b> Village Hall 7.30pm	<b>MONDAY 26</b> <b>Sonning Common Society - Boxing Day walk</b> Village Hall 10am	<b>SUNDAY 1</b> <b>Sonning Common circle dancing group</b> Christ the King Church Hall 3.30 - 5pm	<b>FRIDAY 6</b> <b>British Legion - Tea dance</b> Village Hall 2 - 4pm
	<b>TUESDAY 10</b> <b>Chiltern Edge Horticultural Society - Bulbs and beyond, by Richard Bisgrove</b> Peppard War Memorial Hall 7.30pm	<b>FRIDAY 13</b> <b>Nottakwire practice</b> Village Hall 9.45am	<b>MONDAY 16</b> <b>Sonning Common Parish Council</b> Village Hall 7.30pm	<b>THURSDAY 19</b> <b>FISH - Pub lunch</b> 11.30am
Jan	<b>THURSDAY 19</b> <b>Sonning Common Women's Institute - Colour me beautiful, by Liz Rock. Visitors welcome</b> Village Hall 7.30pm	<b>FRIDAY 20</b> <b>British Legion - Tea dance</b> Village Hall 2 - 4pm	<b>FRIDAY 27</b> <b>Nottakwire practice</b> Village Hall 9.45am	

**FISH** runs regular shopping trips to Tesco in Henley and Henley and Reading town centres.  
For more information and to book call 0118 972 3986. n





## Stone Developments

For All Your Building Requirements:

- extensions, refurb
- conservatories
- roofing, guttering
- soffits, fascias
- new kitchens, new bathrooms
- painting, decorating
- wall & floor tiling
- wood & laminate flooring
- garden maintenance, fencing, sheds, decking etc

Contact: James Stone

Tel: 07971 536804 / 0118 9722000

Email: james@stonejames.orangehome.co.uk

8 Beech Rise, Sonning Common, RG4 9TJ

**Free  
Estimates**

Fed Up With Call Centres

## Barrs Insurance

Mark & Helen Richards

Your Local Insurance Brokers

For The Unusual & The Usual

Let Us Take Care Of Your Insurance

- House & Contents • Business • Liabilities
- Travel • Landlords • Professional Indemnity
- Horse • Shops • Sickness / Accident
- Commercial / Unusual Vehicle

If It's Not listed We Still Can Help  
All Types Of Insurance Enquiries Welcome

**0118 924 2603**

mail: info@barrs-insurances.co.uk

**www.barrs-insurance.co.uk**

Unit 2, Kidby's Yard, Kennylands Road, Sonning Common RG4 9JT

## HENLEY GLAZING AND WINDOW CENTRE LIMITED

Incorporating



**01491 629901**

Glass Supply, Glazing Service,

Mirrors, Shelves, Tabletops,

Sealed Units, Lead Lights,

Locks, Secondary Glazing,

Shower Screens



**FENSA**  
Registered Company



**0118 9419210**

Suppliers and Installers of:

UPVC, Aluminium and

Timber Windows

Doors and Conservatories

Fascias, Soffits and Guttering

Workshop: Unit 12, Manor Farm, Peppard Common, Henley-on-Thames RG9 5LA

Fax: 01491 629904 Email: henleyglazingwindow@yahoo.co.uk

## TANDOORI

*Connoisseur*

21 Wood Lane  
Sonning Common  
0118 972 3104 / 972 1054

*Come & Experience authentic  
Tandoori & Bengali Cuisine*

- ★ Fully Air-Conditioned
- ★ Large Groups Catered For
- ★ Open 7 Days a Week

**TAKE-AWAY MENU**

**We Guarantee Prompt Service on All Orders**

## S J HINTON Carpenter & Joiner

All carpentry work undertaken  
MDF built-in furniture a speciality  
Quality craftsmanship

Telephone Steve on: 0118 972 3602  
Mobile: 07887 653866

## Sonning Common Beauty

12 Newfield Road Telephone 0118 972 3059

www.sonningcommonbeauty.co.uk

- MANICURE • PEDICURE • ORGANIC FACIALS
- MD FORMULATIONS GLYCOLIC PEELS
- WAXING • LASH AND BROW TREATMENTS
- SPRAY TANNING • MAKE-UP • MASSAGE
- BRIDAL HOLIDAY AND MUM-TO-BE PACKAGES AVAILABLE

Gift Vouchers Available

Some reduced price treatments available each  
week please ring to check availability

## EDS School of Motoring

0118 972 3349 / 0794 057 9018

edsschoolofmotoring@yahoo.co.uk



**Creating  
good safe  
drivers  
for life**



**noble intentions**  
landscape garden design

Professional  
advice, design &  
planting for your  
garden.

**Call Gail Noble  
on 0118 972 3214**  
[www.noble-intentions.com](http://www.noble-intentions.com)



**Brambles**

*Weddings* *Funerals*  
*Hand-Tied Gift Bouquets*



*National & International Deliveries*  
*Fully Qualified Florist* *Free Local Delivery*

**42 Wood Lane • Sonning Common • RG4 9SL**  
**0118 972 1240 0777 179 0916**

*We turn feelings into flowers*



## Doggy Dips

### Canine Hydrotherapy Centre

Rehabilitation for pre or post operative/ injury  
To improve mobility in the older dog  
To improve general condition and fitness  
Weight management  
To improve mental well-being & quality of life  
To increase muscle mass, tone & stamina  
Fun! A great way to exercise your dog

*Largest pool in the area  
Qualified staff  
Shower and Drying facilities*

*Fully Insured  
NARCH & CHA Registered  
Recognised by Pet Insurers*

### Doggy Day Care

Home alone is no place for a dog for long periods of time so at Doggy Day Care we ensure that your dog has a fun time when you are unable to be with them. Your dog will be walked, played with, fed and allowed to curl up for a sleep.

### Doggy Behaviour Correction

We offer a one-one service to help you correct poor and unacceptable behaviour. We have many years experience in dealing with behaviour correction so if it's constant barking, lead pulling, aggression or some other problem, call us for a chat or simply pop in to the Centre.

**0118 972 4849**

Unit 1 Kidby's Yard • 28 Kennylands Road • Sonning Common • Reading • RG4 9JT

[www.doggydips.co.uk](http://www.doggydips.co.uk)