



Pricelist

1 July 2026 - 1 July 2027

Easy selection from our complete range of
air heaters | circulation units | air curtains
cooling systems | related accessories
for a perfectly tailored climate control solution.

SINCE
1936

Winterwarm 

Contents

Industrial



4 | Qwikshift QSE
All-electric hybrid heater



5 | Qwikshift QSG
Gas-fired hybrid heater



6 | Winterwarm HPX
Efficient air-water heat pumps



7 | Winterwarm WWH-LT
Low temperature unit heater
for Heat Pumps



8 | Winterwarm WWH/WWH-EC
Water supplied unit heater, with or
without EC-fan



9 | Winterwarm JET
Powerful heat pump unit heater
for high spaces



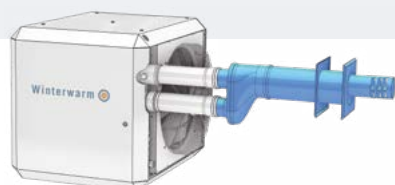
10 | Winterwarm EH
Electric heater



11 | Winterwarm HR
Condensing unit air heater



12 | Winterwarm XR+
Indirect fired unit air heater with
modulating burner and fan



13 | Flue material

Prices in this catalogue are gross prices. All previous price lists hereby become void; price changes and printing/typesetting errors are subject to change. For net prices you can contact our sales office in Warrington - Tel. +44 (0)192 57 65 799. More specific product information can be found on www.winterwarm.co.uk. Version: 1. Juli 2026 - valid until 1. July 2027



13 | WinterCooler
Industrial air cooler



14 | Radiant Tube
Gas-fired radiant tubes



14 | Winterwarm ACM
Air curtain consisting of separate modules

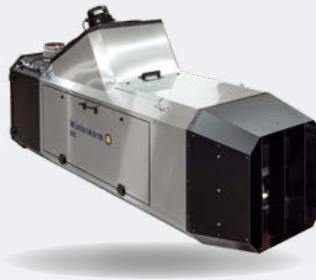


15 | Winterwarm WCU
Destratification fans and Rendovent Ceiling fans

Agri



16 | Winterwarm DX-EH
Electric air heater, specifically for sustainable heating of stables



17 | Winterwarm DXC
Indirect fired air heater with closed combustion system for poultry houses



18 | Winterwarm DX4D
Direct fired air heater with 4-way discharge plenum



19 | Winterwarm DXE
Indirect fired air heater for installation outside the poultry house



20 | Winterwarm DHX
Direct gas fired heater for poultry houses and glass houses



21 | BOXER+
Direct gas-fired warm air heater

21 | Winterwarm DHB
Oil fired heater for poultry houses



Expected to be available in 2027

Winterwarm UK Ltd.
Unit H3, Taylor Business Park, Warrington Road
Warrington Cheshire WA3 6BL
Tel. +44 (0)192 57 65 799
enquiries@winterwarmuk.com
www.winterwarm.co.uk

Qwikshift hybrid heater QSE-series



QSE

QSE series	All-electric	
	Price £	article no
QSE 6 + 10	5743	GH10E06UW
QSE 6 + 15	6145	GH15E06UW
QSE 12 + 15	6300	GH15E12UW
QSE 12 + 30	6446	GH30E12UW
QSE 16 + 5	6263	GH05E16UW
QSE 16 + 10	6743	GH10E16UW
QSE 16 + 15	6871	GH15E16UW
QSE 16 + 20	7095	GH20E16UW
QSE 16 + 30	7675	GH30E16UW
QSE 16 + 40	8031	GH40E16UW

Accessories QSE-series

DESCRIPTION	Applicable on	Price £	article no.
Smart Controller	all QSE types	427	IW8050
Power isolation switch, 230 V - 400 V., 25 A	QSE 6 + 10/15 QSE 12 + 15 QSE 16 + 5/10/15	75	IK5282
Power isolation switch 400V, 32 A	QSE 16 + 20	131	IE5209
Power isolation switch 400V, 63 A	QSE 12 + 30 en QSE 16 + 30/40	206	IE5210
Suspension brackets U-bracket S (wall suspension)	QSE 6 + 10/15	178	GA8610
Suspension brackets M (wall suspension)	QSE 6 + 10/15	186	GA8580
Suspension brackets L (wall suspension)	QSE 12 + x QSE 16 + x	259	GA8622
Set vertical louvres (4 pcs.)	QSE 6 + 10/15	115	GX2003
Set vertical louvres (4 pcs.)	QSE 12 + 15/30	116	GX4002
Set vertical louvres (5 pcs.)	QSE 16 + x	177	GX6004

HEAT PUMPS	Applicable on	Price £	article no.
Heat pump HPX 06	QSE 6 + 10/15	£3.526	GHW8000
Heat pump HPX 12	QSE 12 + 15/30	£4.531	GHW8006
Heat pump HPX 16	QSE 16 + x	£4.915	GHW8008
Anti-frost valve 1" x 1" (2 pieces required per heat pump)	all QSE types	257	IW8040
Roof duct for heat pump ø100mm	all QSE types	120	IW8032
Suspension brackets for heat pump incl. vibration dampers (for suspension on outside wall)	HPX 06-12-16	216	GA8650

Qwikshift hybrid heater QSG-series

QSG series	Natural Gas (G20)		Propane (G31)	
	Price £	article no	Price £	article no
QSG 6+10	7255	GH10H06G20	7355	GH10H06G31
QSG 6+20	7757	GH20H06G20	7885	GH20H06G31
QSG 12+20	8766	GH20H12G20	8894	GH20H12G31
QSG 12+30	9269	GH30H12G20	9429	GH30H12G31
QSG 12+40	10274	GH40H12G20	10438	GH40H12G31
QSG 16+20	9890	GH20H16G20	10027	GH20H16G31
QSG 16+30	10397	GH30H16G20	10557	GH30H16G31
QSG 16+40	11402	GH40H16G20	11562	GH40H16G31
QSG 16+50	12411	GH50H16G20	12653	GH50H16G31
QSG 30+60	17054	GH60H30G20	17290	GH60H30G31



QSG

Accessories QSG-series

DESCRIPTION	Applicable on	Price £	article no.
Smart Controller	all QSG types	427	IW8050
Power isolation switch, 230 V - 400V. 25 A	all QSG types	75	IK5282
Suspension brackets U-bracket S (wall suspension)	QSG 6 + 10/20	178	GA8610
Suspension brackets M (wall suspension)	QSG 6 + 10/20	186	GA8580
Suspension brackets L (wall suspension)	QSG 12 + x QSG 16 + x QSG 30 + 60	259	GA8622
Set vertical louvres (4 pcs.)	QSG 6 + 10/20	115	GX2003
Set vertical louvres (4 pcs.)	QSG 12 + 20/30/40	116	GX4002
Set vertical louvres (5 pcs.)	QSG 16 + x	177	GX6004
Roofterminal DDV 80/125 HR*	all QSG types	160	IA8214
CT 80/125 HR Wall terminal*	all QSG types	136	IA8216
Roof terminal QSG incl. pump/neutralization set*	all QSG types	935	GA8217

HEAT PUMPS	Applicable on	Price £	article no.
Heat pump HPX 06	QSG 6 + 10/20	3526	GHW8000
Heat pump HPX 12	QSG 12 + 20/30/40	4531	GHW8006
Heat pump HPX 16	QSG 16 + x	4915	GHW8008
Heat pump HPX 30	QSG 30 + 60	7814	GHW8009
Roof duct for heat pump ø100mm	all QSG types	120	IW8032
Suspension brackets for heat pump incl. vibration dampers (for wall suspension)	HPX 06-12-16	216	GA8650
Suspension brackets XL for heat pump incl. vibration dampers (for wall suspension)	HPX 30	259	GA8652

* For extra flue material look at page 13.

Heat pump HPX-series



HPX

HPX series	Heat pump HPX	
	Price £	article no
HPX 06	3526	GHW8000
HPX 12	4531	GHW8006
HPX 16	4915	GHW8008
HPX 30	7814	GHW8009

Accessories HPX-series*

DESCRIPTION	Applicable on	Price £	article no.
Power Isolation switch 230-400V, 4 poles, 25 A, for indoor and outdoor use	HPX 06-12-16-30	75	IK5282
Power Isolation switch 4-poles, 32 A, IP65, for indoor and outdoor use	HPX 30	131	IE5209
Modbus expansion set	HPX 06-12-16-30	460	GA8010
Anti-frost valve 1"x 1" (2 pieces required per heat pump)	HPX 06-12-16-30	257	IW8040
Anti-frost valve 1½"x 1½" (2 pieces required per heat pump)	HPX 30	257	IW8039
Roof duct for heat pump, ø 100mm	HPX 06-12-16-30	120	IW8032
Roofsheets for water pipes, ø 140mm	HPX 30	120	IW8031
Heat pump mounting feet, 2 pcs. + attachments, L=600 - H=95mm	HPX 06-12-16	106	IW8043
Heat pump mounting feet, 2 pcs. + attachments, L=1000mm / H=95mm	HPX 30	106	IW8036
Rubber block for extra height, 1 pc., L=600mm / H=120mm	HPX 06-12-16	84	IW8044
Rubber block for extra height, 1 pc., L=1000mm / H=120mm	HPX 30	84	IW8037
Suspension brackets for heat pump incl. vibration dampers (for wall suspension)	HPX 06-12-16	216	GA8650
Suspension brackets XL for heat pump incl. vibration dampers (for wall suspension)	HPX 30	259	GA8652

*) The HPX is as standard provided with an expansion vessel (inside the heat pump), water filter and venting.

Heat emission systems

Unit types	Compatible heat pump
QSG 6 + 10/20	HPX 06
QSG 12 + 20/30/40	HPX 12
QSG 16 + 20/30/40/50	HPX 16
QSG 30 + 60	HPX 30
QSE 6 + 10/15	HPX 06
QSE 12 + 15/30	HPX 12
QSE 16 + 5/10/15/20/30/40	HPX 16

Unit types	Compatible heat pump
WWH 110 LT	HPX 06
WWH 220 LT	HPX 12/HPX 16
WWH 330 LT	HPX 16
WWH 340 LT	HPX 30
JET 220	HPX 12
JET 330	HPX 16
JET 340	HPX 30

Heat pump unit heater WWH-LT-series

WWH-LT series	Low temperature + EC-motor		Compatible heat pump		
	Price £	article no		Price £	article no
WWH 110 LT	1553	GI110WWLEC	HPX 06	3526	GHW8000
WWH 220 LT	2083	GI220WWLEC	HPX 12	4531	GHW8006
WWH 220 LT	2083	GI220WWLEC	HPX 16	4915	GHW8008
WWH 330 LT	2987	GI330WWLEC	HPX 16	4915	GHW8008
WWH 340 LT	3636	GI340WWLEC	HPX 30	7814	GHW8009



WWH LT

Controls

DESCRIPTION	Price £	article no.
Smart Controller	427	IW8050
Room thermostat for EC-control, 230 V.	47	IW3961
Room thermostat for heating and cooling, 230 V, 10 A max.	107	IW3963
Clock thermostat 230V, 10 A	352	IW3968
Connection thermostat	44	IH8500
Stepless speed controller 0-10V	108	GA3955
Modbus expansion set	460	GA8010
Zone valve, 230V, 3/4" (2-way)	496	GA3980
Condensate pump set incl. sifon adapter, hose connector, hose to waiste soil pipe, and 6 m. hose for condensate discharge*	326	GX8002
Hose for condensate discharge 30m., ø10mm	63	IK5785

*) siphon not included

Accessories WWH-LT-series

DESCRIPTION	Applicable on WWH LT	Price £	article no.
Wall brackets	all units	77	GA8595
Ceiling suspension set (do not apply in situations with cooling)	all units	73	GA8600-2
Suspension brackets U-bracket S (wall- or ceiling suspension)	WWH 110 LT	178	GA8610
Suspension brackets U-bracket M (wall- or ceiling suspension)	WWH 220 LT	198	GA8620
4-way down flow plenum (do not apply in situations with cooling)	WWH 110 LT	134	GA120WW-1
4-way down flow plenum (do not apply in situations with cooling)	WWH 220 LT	165	GA245WW-2
4-way down flow plenum (do not apply in situations with cooling)	WWH 330-340 LT	207	GA380WW-2
Set vertical louvres (5 pcs.)	WWH 110 LT	72	GA120VS-1
Set vertical louvres (6 pcs.)	WWH 220 LT	96	GA245VS-1
Set vertical louvres (6 pcs.)	WWH 330-340 LT	115	GA380VS-1

Water supplied unit heater WWH and WWH-EC-series



WWH (EC)

WWH series	Standaard		WWH-EC series	EC-ventilator	
	Price £	article no.		Price £	article no.
WWH 110	731	GI122LWW	WWH 115 EC	1060	GI122HWWEC
WWH 115	804	GI122HWW	WWH 120 EC	1229	GI123HWWEC
WWH 120	936	GI123HWW	WWH 235 EC	1790	GI162HWWEC
WWH 230	1128	GI162LWW	WWH 245 EC	2078	GI163HWWEC
WWH 235	1229	GI162HWW	WWH 350 EC	2057	GI202LWWEC
WWH 245	1420	GI163HWW	WWH 365 EC	2172	GI202LWWEC
WWH 350	1548	GI202LWW	WWH 380 EC	2288	GI203LWWEC

Controls

WWH	Price £	article no.
Room thermostat on/off 230V, 10 A, IP30	48	IW3950
Clock thermostat 230V, 10 A	352	IW3968
Connection thermostat	44	IH8500
Zone valve, 230V, 3/4" (2-way)	496	GA3980
5-step switch 2.2 A	282	IA8540
5-step switch 3.5 A	292	IA8542
5-step switch 5 A	320	IA8543
5-step switch 8 A	424	IA8544
5-step switch 11 A	544	IA8515
5-step switch 15 A	883	IA8516

WWH-EC	Price £	article no.
Room thermostat for EC-control, 230 V.	47	IW3961
Clock thermostat 230V, 10 A	352	IW3968
Connection thermostat	44	IH8500
Zone valve, 230V, 3/4" (2-way)	496	GA3980
Stepless speed controller 0-10V	108	GA3955

Accessories WWH and WWH-EC-series

DESCRIPTION	Applicable on WWH	Applicable on WWH EC	Price £	article no.
Wall brackets	all units	all units	77	GA8595
Ceiling suspension set	all units	all units	69	GA8600
Suspension brackets U-bracket S (wall- or ceiling suspension)	WWH 110-120	WWH 115-120 EC	178	GA8610
Suspension brackets U-bracket M (wall- or ceiling suspension)	WWH 230-245	WWH 235-245 EC	198	GA8620
4-way down flow plenum	WWH 110-120	WWH 115-120 EC	134	GA120WW-1
4-way down flow plenum	WWH 230-245	WWH 235-245 EC	188	GA245WW-1
4-way down flow plenum	WWH 350	WWH 350-380 EC	237	GA380WW-1
Set vertical louvres (5 pcs.)	WWH 110-120	WWH 115-120 EC	72	GA120VS-1
Set vertical louvres (6 pcs.)	WWH 230-245	WWH 235-245 EC	96	GA245VS-1
Set vertical louvres (6 pcs.)	WWH 350	WWH 350-380 EC	115	GA380VS-1

Heat pump unit heater JET-series

JET series S	Standard		JET series M	Incl. modbus router	
	Price £	article no.		Price £	article no.
JET 220 S	3476	GJ220BWWS	JET 220 M	3914	GJ220BWWM
JET 330 S	4316	GJ330BWWS	JET 330 M	4778	GJ330BWWM
JET 340 S	4988	GJ340BWWS	JET 340 M	5449	GJ340BWWM



JET

Accessories JET-series

CONTROLS	Price £	article no.
Stepless speed controller 0-10V	108	GA3955
Smart Controller	427	IW8050
Modbus expansion set (Note: the JET-M comes standard with an integrated Modbus router)	460	GA8010
Room thermostat for EC-control, 230 V.	47	IW3961
Connection thermostat	44	IH8500

Compatible heat pumps

DESCRIPTION		Price £	article no.
JET 220 M/S	HPX 12	4531	GHW8006
JET 220 M/S - JET 330 M/S	HPX 16	4915	GHW8008
JET 340 M/S	HPX 30	7814	GHW8009

Electric warm-air heater EH-series



EH series	Price £	article no.
EH 5	1073	GE05A0WW
EH 10	1393	GE10A0WW
EH 15	1640	GE15A0WW
EH 20	1749	GE20A0WW
EH 25	2083	GE25A0WW
EH 30	2311	GE30A0WW
EH 40	2617	GE40A0WW
EH 50	3120	GE50A0WW
EH 60	3599	GE60A0WW

Accessories EH-series

CONTROLS	Applicable on	Price £	article no.
Smart Controller	EH 5 - EH 60	427	IW8050
Thermostat Multitherm Standard, controls up to 8 heaters	EH 5 - EH 60	173	IX3911
Thermostat Multitherm Comfort, controls up to 8 heaters	EH 5 - EH 60	333	IX3912
Remote sensor for MTC thermostat	EH 5 - EH 60	129	GA3929
Modbus control set	EH 5 - EH 60	69	GA5903
0-10 V input control set	EH 5 - EH 60	69	GA5906
Room thermostat on/off 230V, 10 A, IP30	EH 5 - EH 60	48	IW3950
Power isolation switch 230V - 400V, 25 A	EH 5 - EH 15	75	IK5282
Power isolation switch 400 V, 32 A	EH 20	131	IE5209
Power isolation switch 400V, 63 A	EH 25 - EH40	206	IE5210
Power isolation switch 400 V, 125 A	EH 50 - EH 60	544	IE5212

SUSPENSION	Applicable on	Price £	article no.
Suspension brackets U-bracket S (wall suspension)	EH 5 - EH 40	178	GA8610
Suspension brackets U-bracket M (wall suspension)	EH 50 - EH 60	198	GA8620
Suspension brackets M (wall suspension)	EH 50 - EH 60	186	GA8580
Mounting set console for on H-beam (in combination with GA8610/20/30)	EH 5 - EH 40	129	GA8680
Clampset for mounting to H-profile (combined with GA8580)	EH 50 - EH 60	333	GA8685
Design bracket (wall suspension)	EH 5 - EH 40	275	GA8630
Set vertical louvres (4 pcs.)	EH 5 - EH 40	115	GX2002
Set vertical louvres (4 pcs.)	EH 50 - EH 60	145	GX4003



Condensing unit air heater HR & HR-EC-series

HR series	Natural Gas (G20)		Propane (G31)	
	Price £	article no.	Price £	article no.
HR 10	3289	GM10AAG20	3389	GM10AAG31
HR 20	3695	GM20AAG20	3823	GM20AAG31
HR 30	4193	GM30AAG20	4348	GM30AAG31
HR 40	5097	GM40AAG20	5253	GM40AAG31
HR 50	5773	GM50AAG20	6020	GM50AAG31
HR 60	6536	GM60AAG20	6783	GM60AAG31
HR 80	6892	GM80AAG20	6979	GM80AAG31
HR 100	8491	GM03AAG20	8573	GM03AAG31
HR 120	10030	GM04AAG20	10112	GM04AAG31

HR-EC series	Natural Gas (G20)		Propane (G31)	
	Price £	article no.	Price £	article no.
HR 10 EC	3764	GM10AAG20EC	3864	GM10AAG31EC
HR 20 EC	4184	GM20AAG20EC	4312	GM20AAG31EC
HR 30 EC	4673	GM30AAG20EC	4846	GM30AAG31EC
HR 40 EC	5595	GM40AAG20EC	5773	GM40AAG31EC
HR 50 EC	6404	GM50AAG20EC	6641	GM50AAG31EC
HR 60 EC	7253	GM60AAG20EC	7504	GM60AAG31EC
HR 80 EC	8075	GM80AAG20EC	8212	GM80AAG31EC
HR 100 EC	9747	GM03AAG20EC	9875	GM03AAG31EC
HR 120 EC	11382	GM04AAG20EC	11515	GM04AAG31EC

HR

Accessories HR & HR-EC-series

CONTROLS	Applicable on	Price £	article no.
Smart Controller	HR10 - HR120	427	IW8050
Thermostat Multitherm Standard controls up to 8 heaters	HR10 - HR120	173	IX3911
Thermostat Multitherm Comfort controls up to 8 heaters	HR10 - HR120	333	IX3912
Remote sensor for MTC thermostat	HR10 - HR120	129	GA3929
Modbus control set	HR10 - HR120	69	GA5903
0-10 V input control set	HR10 - HR120	69	GA5906
Power isolation switch 230V-400V, 25 A	HR10 - HR120	75	IK5282
Service set alarm contact	HR10 - HR120	26	GA4009
Service set alarm-reset	HR10 - HR120	130	GA4012

FLUE MATERIALS	Applicable on	Price £	article no.
Roof terminal 80/125 HR	HR10 - HR60	160	IA8214
CT 80/125 HR Wall terminal	HR10 - HR60	136	IA8216
Concentric roof terminal 100/150 (condensing)	HR80 - HR100	362	IA8108
Concentric wall terminal 100/150 (condensing)	HR80 - HR100	235	IA8114
Roof terminal DDV 130/200 HR	HR120	576	IA8307
Wall terminal CT 130/200 HR	HR120	435	IA8314

CONDENSATE DISCHARGE through the roof	Applicable on	Price £	article no.
Roof terminal incl. pump/neutralization set 80/125 HR	HR10 - HR20	849	GA8215
Roof terminal incl. pump/neutralization set, 100/150 HR	HR30-60	897	GA8216
Roof terminal incl. pump/neutralization set, 100/150 HR	HR80 - HR100	993	GA8109
Roof terminal incl. pump/neutralization set, 130/200 HR	HR120	1285	GA8308

SUSPENSION	Applicable on	Price £	article no.
Suspension brackets U-bracket S (wall suspension)	HR10 - HR20	178	GA8610
Suspension brackets U-bracket M (wall suspension)	HR30 - HR40	198	GA8620
Mounting set console for on H-beam (in combination with GA8610/20/30)	HR10 - HR40	129	GA8680
Mounting set on H-beam (in combination with GA8580)	HR30 - HR60	333	GA8685
Suspension brackets M (wall suspension)	HR30 - HR60	186	GA8580
Suspension brackets L (wall suspension)	HR80 - HR120	259	GA8622
Design bracket (wall suspension)	HR10 - HR20	275	GA8630

OTHER	Applicable on	Price £	article no.
Set vertical louvres (4 pcs.)	HR10 - HR20	115	GX2001
Set vertical louvres (4 pcs.)	HR30 - HR40	145	GX4001
Set vertical louvres (6 pcs.)	HR50 - HR60	177	GX6002
Set vertical louvres (6 pcs.)	HR80 - HR120	189	GX8010
Condensate pump set incl. sifon adapter, hose connector, hose to waste soil pipe, and 6 m. hose for condensate discharge*	HR10 - HR120	326	GX8002
Hose for condensate discharge 30m., Ø 10mm	HR10 - HR120	63	IK5785
Fanbox HR for outside air entry, incl. connection piece and 2 dampers	HR30 - HR60	926	GAX60110
Servomotor 220V for dampers on fanbox	HR30 - HR60	635	IK4800
Remote step control for servomotor	HR30 - HR60	250	GA4801

*) siphon not included

* For extra flue material look at page 13.

Indirect fired unit air heater XR+-series



XR+

XR+ series	Natural Gas (G20)		Propane (G31)	
	Price £	article no.	Price £	article no.
XR10+	2640	GN10AAG20	2713	GN10AAG31
XR20+	2951	GN20AAG20	3083	GN20AAG31
XR30+	3348	GN30AAG20	3531	GN30AAG31
XR40+	4106	GN40AAG20	4230	GN40AAG31
XR50+	4627	GN50AAG20	4864	GN50AAG31
XR60+	5230	GN60AAG20	5476	GN60AAG31
XR80+	5689	GN80AAG20	5767	GN80AAG31
XR100+	6687	GN03AAG20	6781	GN03AAG31
XR120+	7283	GN04AAG20	7387	GN04AAG31

Accessories XR+-series

CONTROLS	Applicable on	Price £	article no.
Smart Controller	XR10+ - XR120+	427	IW8050
Thermostat Multitherm Standard, controls up to 8 heaters	XR10+ - XR120+	173	IX3911
Thermostat Multitherm Comfort, controls up to 8 heaters	XR10+ - XR120+	333	IX3912
Remote sensor for MTC thermostat	XR10+ - XR120+	129	GA3929
Modbus control set	XR10+ - XR120+	69	GA5903
0-10 V input control set	XR10+ - XR120+	69	GA5906
Power isolation switch, 230V - 400V, 25 A	XR10+ - XR120+	75	IK5282
Service set alarm contact	XR10+ - XR120+	26	GA4009
Service set alarm-reset	XR10+ - XR120+	130	GA4012

SUSPENSION	Applicable on	Price £	article no.
Suspension brackets U-bracket S (wall- or ceiling suspension)	XR10+ - XR30+	178	GA8610
Suspension brackets U-bracket M (wall- or ceiling suspension)	XR40+ - XR60+	198	GA8620
Suspension brackets M (wall suspension)	XR40+ - XR60+	186	GA8580
Suspension brackets L (wall suspension)	XR80+ - XR120+	259	GA8622
Mounting set console for on H-beam (in combination with GA8610/20/30)	XR10+ - XR60+	129	GA8680
Mounting set on H-beam (in combination with GA8580)	XR40+ - XR60+	333	GA8685
Vertical suspension kit 80-165 cm	XR10+ - XR60+	198	GA8645
Design bracket (wall- or ceiling suspension)	XR10+ - XR30+	275	GA8630

FLUE MATERIALS	Applicable on	Price £	article no.
Roof terminal DDV 80/125	XR10+ - XR60+	199	IA8202
Wall terminal MDV 80 (2-pipes)	XR10+ - XR60+	178	IA8212
Concentric wall terminal CT 80/125	XR10+ - XR60+	140	IA8113
Roof terminal DDV 100/150	XR80+ - XR100+	289	IA8101
Concentric wall terminal CT 100/150	XR80+ - XR100+	235	IA8112
Roof terminal DDV 130/200	XR120+	491	IA8305
Wall terminal CT 130/200	XR120+	322	IA8312

* For extra flue material look at page 13.

OTHER	Applicable on	Price £	article no.
Set vertical louvres (4 pcs.)	XR10+ - XR30+	115	GX2001
Set vertical louvres (4 pcs.)	XR40+ - XR60+	145	GX4001
Set vertical louvres (6 pcs.)	XR80+ - XR120+	189	GX8010
Fanbox HR for outside air entry, incl. connection piece and 2 dampers	XR40+ - XR60+	926	GAX60110
Servomotor 220V for dampers on fanbox	XR40+ - XR60+	635	IK4800
Remote step control for servomotor	XR40+ - XR60+	250	GA4801

Various flue materials

For HR-series aluminium 1.5 mm - T120				For XR ⁺ -series aluminium 0.7 mm - T200			
	diameter	Price £	article no.		diameter	Price £	article no.
Elbow 90°	Ø 80	25	IA8220	Elbow 90°	Ø 80	19	IA8123
Elbow 45°	Ø 80	25	IA8221	Elbow 45°	Ø 80	17	IA8200
Pipe 1000 mm	Ø 80	40	IA8129	Pipe 1000 mm	Ø 80	31	IA8128
Pipe 500 mm	Ø 80	23	IA8222	Pipe 500 mm	Ø 80	22	IA8250
Elbow 90°	Ø 100	37	IA8168	Elbow 90°	Ø 100	26	IA8167
Elbow 45°	Ø 100	29	IA8162	Elbow 45°	Ø 100	20	IA8163
Pipe 1000 mm	Ø 100	52	IA8158	Pipe 1000 mm	Ø 100	37	IA8156
Pipe 500 mm	Ø 100	35	IA8152	Pipe 500 mm	Ø 100	24	IA8150
Elbow 90°	Ø 130	100	IA8368	Elbow 90°	Ø 130	42	IA8367
Elbow 45°	Ø 130	66	IA8362	Elbow 45°	Ø 130	38	IA8363
Elbow 30°	Ø 130	111	IA8360	Pipe 1000 mm	Ø 130	49	IA8356
Pipe 1000 mm	Ø 130	76	IA8358	Pipe 500 mm	Ø 130	40	IA8350
Pipe 500 mm	Ø 130	48	IA8352				

ACCESSORIES		Price £	article no.
Concentric extension pipe, beneath the roof 130/200, L=500mm		153	IA8313
Concentric extension pipe, above the roof 130/200 - L=1000mm		268	IA8411
Roof sheet RP 80/125		21	IA8121
Roof sheet RP 100/150		38	IA8321
Conical roof sheet CP (45°) CL 100/160 incl. storm collar		422	GA8142
Roof sheet RP 130/210		44	IA8322
Deformable roof sheet 130/200 (25°-45°)		287	IA8341
Roof sheet set 130/210 for trapezoidal roof		235	GA8334

Air cooler WinterCooler-series

WinterCooler series	Industrial air cooler	
	Price £	article no.
CL250	5024	IH4223
CL450	5938	IH4222
CL650	6851	IH4221



WinterCooler

Radiant Tube WRU-series



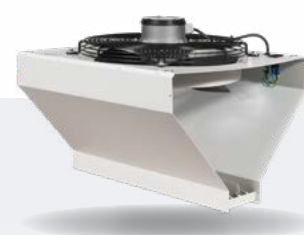
WRU

WRU series	Radiant tube	
	Price £	article no.
WRU 15	1599	WRU15NG
WRU 22	1897	WRU22NG
WRU 28	2284	WRU28NG
WRU 33	2464	WRU33NG
WRU 42	2557	WRU42NG
WRU 50	2756	WRU50NG

Accessories WRU-series

FLUE MATERIAL FOR BALANCED FLUE SYSTEM	Price £	article no.
Roof terminal DDV 100/150	289	IA8101
Roof sheet flat roof RP 100/160	38	IA8321
Conical roof sheet CP(45°)/CL 100/160, incl. storm collar	424	GA8142

Air curtain ACM-series



ACM

ACM series	Air curtain module	
	Price £	article no.
ACM - 1 module (width 52 cm)	516	GVACM

Accessories ACM-series

DESCRIPTION	Price £	article no.
Assembly set (incl. 2 end plates and 1 connector) Per air curtain one assembly set is required	61	GA8700
Vertical mounting set (incl. bottom plate and 2 support strips)	58	GA8585
Horizontal mounting consoles (max. 10 modules per set)	205	GA8575
5-step switch 5 A	320	IA8543
5-step switch 8 A	424	IA8544
5-step switch 11 A	544	IA8515
5-step switch 15 A	883	IA8516
Relay for door contact, 230 V., 20 A	127	GA4100

Destratification fans WCU, WCU EC & Rendovent-series



WCU

WCU series	Destratification fans		WCU-EC series	Destratification fans	
	Price £	article no.		Price £	article no.
WCU 40	735	GW401400	WCU 40 EC	735	GW4014EC
WCU 60	868	GW601400	WCU 60 EC	868	GW6014EC
WCU 80	1128	GW801400	WCU 80 EC	1749	GW8014EC
WCU 100	1370	GW101400	WCU 100 EC	2206	GW1014EC

Rendovent	Destratification fans	
	Price £	article no.
Rendovent black	231	IA8504
Rendovent white	231	IA8500

Accessories WCU-series

DESCRIPTION	Price £	article no.
Suspension set WCU	42	GA8570
Room thermostat on/off 230V, 10 A, IP30	48	IW3950
Room thermostat on/off 230V, 10-200 millia, IP30 for WCU EC	47	IW3961
Stepless switch 3 Amp. (for 1-7 Rendovents)	169	IA8509
5-step switch 2.2 A	282	IA8540
5-step switch 3.5 A	292	IA8542
5-step switch 5 A	320	IA8543
5-step switch 8 A	424	IA8544
5-step switch 11 A	544	IA8515
5-step switch 15 A	883	IA8516
Stepless speed controller 0-10V	108	GA3955
Steples speed controller 0-10V., for WCU-EC	79	GX3952

Agri

Electric air heater DX-EH-series



DX-EH

DX-EH series	Price £	article no.
DX-EH 40	3965	PEC40A0WW

Accessories DX-EH-series

DESCRIPTION	Price £	article no.
On/off thermostat -20°C / +40°C, water resistant to IP65	169	IP794209
Remote status reader	368	GD3202
Interface board for modulating burner control	333	IB5902
Modbus control set	69	GA5903
0-10 V input control set	69	GA5906
Service set alarm contact	26	GA4009
Service set alarm-reset	130	GA4012
Power isolation switch 400V, 63 A	206	IE5210
Suspension kit (incl. 3m. chain + 4 carabiner)	111	GA8573
DXF fan	573	PDF5000

Indirect gas-fired warm-air heater DXC-series



DXC

DXC series	Natural Gas (G20)		Propane (G31)	
	Price £	article no.	Price £	article no.
DXC 60	5266	PDC01A0G20	5266	PDC01A0G31
DXC 80	6052	PDC02A0G20	6052	PDC02A0G31
DXC 100	7267	PDC03A0G20	7267	PDC03A0G31

Accessories DXC-series

DESCRIPTION	Price £	article no.
On/off thermostat -20°C / +40°C, IP65	169	IP794209
Remote status reader	368	GD3202
Interface board for modulating burner control	333	IB5902
Mobile heater stand	973	GD5000
Wall suspension kit	273	GD5002
Modbus control set	69	GA5903
0-10 V input control set	69	GA5906
Service set alarm contact	26	GA4009
Service set alarm-reset	130	GA4012
Suspension kit (incl. 4 m. chain + 8 carabiner)	145	GA8574
Service parts box for DXC 60-80-100 (excl. fans) version 4	1403	GA4004-1
Service set with system fan and flue fan for DXC 60-80	843	GA4004-2
Service set with system fan and flue fan for DXC100	986	GA4004-3
DXF fan	573	PDF5000

FLUE MATERIALS	Price £	article no.
Roof terminal DDV 130/200	491	IA8305
Wall terminal CT 130/200	322	IA8312
Flue mounting kit (incl. 2 male & 2 female adapters, 2 safety clamps, silicone kit) Obligatory with each pipe set	310	GA8350
Flexible pipe set 1 m. ø 130	140	GA8310
Flexible pipe set 2 m. ø 130 (incl. 1 spacer bracket)	238	GA8315
Flexible pipe set 3 m. ø 130 (incl. 2 spacer brackets)	339	GA8320
Flexible pipe set 4 m. ø 130 (incl. 3 spacer brackets)	416	GA8325
Flexible pipe set 5 m. ø 130 (incl. 4 spacer brackets)	517	GA8330
90° Elbow set, ø 130	84	GA8355
Concentric extension pipe (indoor) 130/200, 500mm	153	IA8313
Concentric extension pipe (outdoor) 130/200, 1000mm	268	IA8411
Roof sheet RP 130/210	44	IA8322
Adjustable roofsheet 130/200 (11°-50°)	275	IA8344
Roof sheet set 130/210 for trapezoidal roof	235	GA8334

GAS CONNECTION 3/4"	Price £	article no.
Gas hose 3/4" L 2000mm - CE approved - incl. nipples	358	IP779055
Gasball valve+ filter set 3/4" - incl. nipples	136	GD4000
Gas pressure regulator set natural gas- incl. nipples - inlet pressure max.200mbar, 27mbar outlet pressure	150	GD4004
Gas pressure regulator set propane - incl. nipples - inlet pressure max. 1,75 bar, 50mbar outlet pressure	183	GD4006

Indirect gas-fired warm-air heater DX4D-series



DX4D

DX4D series	Natural Gas (G20)		Propane (G31)	
	Price £	article no.	Price £	article no.
DX4D 60	5814	PD402A0G20	5814	PD402A0G31
DX4D 80	6584	PD401A0G20	6584	PD401A0G31
DX4D 100	7766	PD403A0G20	7766	PD403A0G31

Accessories DX4D-series

DESCRIPTION	Price £	article no.
On/off thermostat -20°C / +40°C, IP65	169	IP794209
Remote status reader	368	GD3202
Interface board for modulating burner control	333	IB5902
Modbus control set	69	GA5903
0-10 V input control set	69	GA5906
Service set alarm contact	26	GA4009
Service set alarm-reset	130	GA4012
Suspension kit (incl. 4 m. chain + 8 carabiner)	145	GA8574
Service parts box for DXC 60-80-100 (excl. fans) version 4	1403	GA4004-1
DXF fan	573	PDF5000

FLUE MATERIALS	Price £	article no.
Roof terminal DDV 130/200	491	IA8305
Wall terminal CT 130/200	322	IA8312
Flue mounting kit (incl. 2 male & 2 female adapters, 2 safety clamps, silicone kit) Obligatory with each pipe set	310	GA8350
Flexible pipe set 1 m. ø 130	140	GA8310
Flexible pipe set 2 m. ø 130 (incl. 1 spacer bracket)	238	GA8315
Flexible pipe set 3 m. ø 130 (incl. 2 spacer brackets)	339	GA8320
Flexible pipe set 4 m. ø 130 (incl. 3 spacer brackets)	416	GA8325
Flexible pipe set 5 m. ø 130 (incl. 4 spacer brackets)	517	GA8330
90° Elbow set, ø 130	84	GA8355
Concentric extension pipe (indoor) 130/200, 500mm	153	IA8313
Concentric extension pipe (outdoor) 130/200, 1000mm	268	IA8411
Roof sheet RP 130/210	44	IA8322
Adjustable roofsheet 130/200 (11°-50°)	275	IA8344
Roof sheet set 130/210 for trapezoidal roof	235	GA8334

GAS CONNECTION 3/4"	Price £	article no.
Gas hose 3/4" L 2000mm - CE approved - incl. nipples	358	IP779055
Gasball valve+ filter set 3/4" - incl. nipples	136	GD4000
Gas pressure regulator set natural gas- incl. nipples - inlet pressure max.200mbar, 27mbar outlet pressure	150	GD4004
Gas pressure regulator set propane - incl. nipples - inlet pressure max. 1,75 bar, 50mbar outlet pressure	183	GD4006

Gas-fired warm-air heater DXE-series



DXE series	Natural Gas (G20)		Propane (G31)	
	Price £	article no.	Price £	article no.
DXE 80	7153	PDE02A0G20	7153	PDE02A0G31
DXE 100	8655	PDE03A0G20	8655	PDE03A0G31

Accessories DXE-series

DESCRIPTION	Price £	article no.
On/off thermostat -20°C / +40°C, water resistant to IP65	169	IP794209
Remote status reader	368	GD3202
Interface board for modulating burner control	333	IB5902
Modbus control set	69	GA5903
0-10 V input control set	69	GA5906
Service set alarm contact	26	GA4009
Service set alarm-reset	130	GA4012
Discharge cone DXE 80	495	GD4308
Discharge cone DXE 100	582	GD4310
Service parts box for DXE 60-80-100 (excl. fans) - version 4	1403	GA4004-1
Service set with system fan and flue fan for DXE 60-80	843	GA4004-2
Service set with system fan and flue fan for DXE100	986	GA4004-3
Flue gas outlet diam. 130, L=230mm	91	IA8355
DXF fan	573	PDF5000

GAS CONNECTION 3/4"	Price £	article no.
Gas hose 3/4" L 2000mm - CE approved - incl. nipples	358	IP779055
Gasball valve+ filter set 3/4" - incl. nipples	136	GD4000
Gas pressure regulator set natural gas- incl. nipples - inlet pressure max.200mbar, 27mbar outlet pressure	150	GD4004
Gas pressure regulator set propane - incl. nipples - inlet pressure max. 1,75 bar, 50mbar outlet pressure	183	GD4006

Gas fired warm-air heater DHX-series



DHX

DHX series	Natural gas (G20)		Propane (G31)	
	Price £	article no.	Price £	article no.
DHX 40	2215	PDX40A0G20	2215	PDX40A0G31
DHX 75	2617	PDX75A0G20	2617	PDX75A0G31
DHX 100	2955	PDX10A0G20	2955	PDX10A0G31
DHX 120	3279	PDX12A0G20	3279	PDX12A0G31

Accessories DHX-series

DESCRIPTION	Price £	article no.
On/off thermostat -20°C / +40°C, water resistant to IP65	169	IP794209
Remote status reader	368	GD3202
Interface board for modulating burner control	333	IB5902
Service set alarm contact	26	GA4009
Service set alarm-reset	130	GA4012
Suspension kit (4 chains of 110 cm + 8 carabiners)	69	GA8572
Service parts box for DHX	1391	GA4006-2
DXF fan	573	PDF5000

GAS CONNECTION 3/4"	Price £	article no.
Gas hose 3/4" L 2000mm - CE approved - incl. nipples	358	IP779055
Gasball valve+ filter set 3/4" - incl. nipples	136	GD4000
Gas pressure regulator set natural gas- incl. nipples - inlet pressure max.200mbar, 27mbar outlet pressure	150	GD4004
Gas pressure regulator set propane - incl. nipples - inlet pressure max. 1,75 bar, 50mbar outlet pressure	183	GD4006

Direct gas-fired warm-air heater BOXER+-series

BOXER+ series	Natural Gas (G20)	
	Price £	article no.
BOXER+ 80	1634	UKBOXER80



BOXER+

Accessoires BOXER+-series

DESCRIPTION	Price £	article no.
Air recirculation unit	195	4AYC060
Air diffusion extension	80	4AYT060
Mounting brackets	95	4AZM001

Oil fired warm air heater DHB-series

DHB series	Price £	article no.
	DHB 100	Price upon request
DHB 120	Price upon request	XXXXXXXX

Expected to be available in 2027



DHB

Innovative heating and lighting solutions

We strive for sustainable and healthy solutions that contribute to a better climate and a pleasant working environment. Whether it's making your business premises more sustainable or optimizing the indoor climate, Winterwarm is your reliable partner for green and efficient business spaces.

Versatile and applicable everywhere, a world of possibilities

In addition to heating, Winterwarm also provides lighting for every space. Thanks to innovative technology and energyefficient designs, we create a comfortable environment tailored to specific needs. Perfect for both large and small spaces.



www.winterwarm.co.uk

Curious about our projects?
Check our website or scan the QR code!

Winterwarm UK Ltd.

Unit H3, Taylor Business Park, Warrington Road
Warrington Cheshire WA3 6BL

Tel. +44 (0)192 57 65 799 enquiries@winterwarmuk.com www.winterwarm.co.uk



Winterwarm