

SC

SONNING COMMON MAGAZINE



IN THIS ISSUE



EAT, SLEEP ROW, REPEAT

A TALE FROM
THE RIVERBANK
P11



GYM AND TONIC

A LITTLE BIT OF
WHAT YOU ENJOY
DOES YOU GOOD!
P16-17



FRED SLOUGH

LOCAL HERO
DISTANT MEMORIAL
P19



WI BATON ARRIVAL

JUN / JULY 2015

CARPET FITTER

Fitted Carpets & Vinyl Specialist
Underlays & Fixings Supplied
Re-Adaptions & Restretches
Measuring, Estimating & Planning
Carpets ★ Vinyl ★ Amtico ★ Kamdean
25 YEARS EXPERIENCE

MICHAEL HODGSON

TEL: 0118 901 1777 / MOB: 07841 586003

Caversham Aerial Services

TV Aerials Supplied and Fitted.
Poor Reception? Old aerials?
Can't get the new digital channels?

Give us a call - We can help!

Phone 0118 9673596

www.caversham-aerials.co.uk



wood lane dentistry



Vik Chugani BDS MFDS RCSEdlin MSc

Richard McQuillan BDS

Jessica Lee BDS MFDS RCSEng DipDent

Deepa Shah BDS MFDS RCSEng MSc

- Your local family friendly practice
- Routine general dentistry
- Affordable dental plans with Denplan
- Children seen on the NHS
- Tooth whitening
- Cosmetic dentistry and Implants
- Invisible braces
- Sedation for nervous patients
- Ample free parking

Now taking on new patients

Saturday and evening appointments available

*Happy Healthy
Smiles...*



Denplan
at the heart of dentistry

Wood Lane Sonning Common Reading
Berkshire RG4 9SJ Telephone 0118 9722626
www.woodlanedentistry.co.uk

Electrolysis, Waxing, Make-up,
Eyelash Tinting, Eyebrow Shaping,
Jessica Manicures & Pedicures,
Aromatherapy Facials & Massage

Tel: 0118 9723157
Janet Copp I.H.B.C

www.chilternbeauty.co.uk

Chiltern
Beauty

9 Sedgefield Close,
Sonning Common RG4 9TS

Outstanding Natural Beauty



elements;
KITCHENS • INTERIORS

Visit our stunning showroom:
8b Portman Road, Reading RG30 1EA
Tel 0118 959 9919
www.elementskitchens.co.uk



Adam's Pest Control

Professional Pest Control in Sonning Common
Rats, mice, rabbits, squirrels, moles, insects, foxes.
Available 7 days a week.

BPCA Qualified and Fully Insured

Call 0118 9723709 or 0784 9342690
www.adamspestcontrol.co.uk



FROM THE EDITORIAL TEAM

The 'Healthy' theme continues in this issue of the magazine with the In Focus section featuring Green Gym and the contribution it makes to conservation and personal health. In addition the physical achievements of two young rowers, Grace and Alice is recounted by them, describing their exciting and rewarding sport.

The 'Women's Institute' celebrates 100 years since its inception and many of you will know that Lady Brunner from Greys Court was a lifelong member and enthusiast of the WI and would have been delighted to know it was celebrating its centenary! She enjoyed cooking, especially making cakes, scones and jam, using fresh fruit and vegetables from the kitchen garden.

As I write this, in the week when we have just remembered Victory in Europe day, I was particularly pleased to receive an article from residents who have written up their visit to the Falkland Islands, in memory of Fred Slough a lad from Sonning Common. At just 19 years old he died in the war against Argentina.

The LIONS continue with their fund raising and there are the regular contributions from Zack, Tom and Sandy. There are so many interesting articles submitted by residents that it seems a shame to single some out and not others but I am sure you will find them and enjoy them all.

Finally now that Parish Boundaries have been settled Graham Foulis Brown, Rector at Kidmore End explains the ecclesiastical history of the boundaries, on the Church news page. Perhaps the last word on the subject?



Diana Pearman Editor

Email: editor@sonningcommonmagazine.org



HIGHLIGHTS

- 2 Community News
- 8 Notice Board
- 16 In Focus
- 19 Fred Slough
- 21 Just for kids
- 25 Tom Fort
- 27 Did you know?
- 30 Parish News
- 32 Diary Dates

Design & Artwork: Kevin Taplin

tensevennine.com

kevin@tensevennine.com

07887902376 / 0118 957 6929

Print: Rick Peedell

Xplor Ltd

rick@xplor-pm.co.uk

07766 254422 / 0118 9471955

Cover image: WI Baton Arrival by John Pearman

While every effort is made to ensure the accuracy of information printed in this magazine, the editor and the publisher cannot accept any responsibility for the consequences of errors that occur.

SC SONNING COMMON
MAGAZINE

MEET THE TEAM ...



Christine Atkinson



Hannah Rice



Jo Stoves



Joan Grummant



Ros Varnes

USEFUL CONTACTS:

Chairman: Geoff Adams

1 Woodlands Road, Sonning Common RG4 9TD

chairman@sonningcommonmagazine.org

Tel 0118 972 2134

Diary dates: Helen Barker

helen.barker@tesco.net Tel 0118 972 1241

Distribution: Helen Gavin

distribution@sonningcommonmagazine.org

Tel 0118 972 4680

Advertising: John Pearman

advertising@sonningcommonmagazine.org

Tel 0118 972 2381

IDEAS FOR STREET NAMES PLEASE

THE PARISH COUNCIL IS LOOKING FOR HELP FROM RESIDENTS TO COMPILE A LIST OF POTENTIAL NEW STREET NAMES.

The planning committee has started to put together a list of potential street names themed on trees, wildflowers, wildlife, local people and places.

Suggestions include Cherry Tree Road, Poppy Lane, Red Kite View and Stannard Close.

Please email any ideas to: deputyclerk@sonningcommonparishcouncil.org.uk or post via the Parish Office letterbox in the door of the village hall.

Names are needed for the areas where the 138 new homes are to be built in the village between 2017 and 2027. ●

POSITIVE FEEDBACK FROM RESIDENTS ON THE NDP

The Pre-Submission Draft Plan Consultation has been extended until 12 June. This is because our Environment Report (ER) which has to be available as part of our Draft Plan required technical changes and additional information prior to completion. Due to our limited resources this took longer than we planned. Thus to comply with the regulations the extended period of consultation had to be 6 weeks until 12th June from publication of the ER on our website. Hard copies of the Report and respondent feedback forms are available in the Clerk's Office and in the Library, and electronically on our website.

At the time of writing (end of April) we have received 250 respondent feedback forms from residents and 11 comments

from Consultees. The main message coming from residents' returns is that although our site allocations are meeting with varied opinions, they are strongly in favour, and that our Plan is approved by a very large majority. The comments also overwhelmingly praised the NDP WP for the high quality of the Draft Plan and the depth and breadth of consultation with residents.

Great concerns are expressed about the parking and traffic issues in the Village Centre and the impact of new housing on these problems.

We gave reports on our work and progress so far to the Annual Parish Meeting of RPPC on 25 April and to Sonning Common's Parish Meeting on 20 May. ●

Allocated sites	No. of homes	Agree	Disagree
SON 2	52	181	22
SON 3 (recreation)		202	7
SON 6	26	189	13
SON 9	60	173	35

Data from residents' returns (250)

Reserve sites	No. of homes	Agree	Disagree
SON 15a	37	147	40
SON 7 (Hagpits House)	25	149	35
SON 7a	5	150	32
Possible reserve site	No. of homes	Agree	Disagree
SON 5	20	98	73

WI BATON ARRIVES IN SONNING COMMON

The centenary year of the WI has been celebrated with a Baton ceremony.

The Baton has been conveyed to each WI County Federation in England and Wales, by Lifeboat, fire engine, buses and trains, vintage tractors, a pink Mini and, at Banbury, a white horse!

300 Oxfordshire WI members gathered to welcome the Baton to Dorchester Abbey 20 April. Jerusalem was sung and a giant, beautifully decorated, birthday cake was shared by all.

In glorious sunshine on 21 April, the Baton reached Sonning Common, delivered by Cleeve cum Goring WI in a vintage Aston Martin racing car. Celebrations were held

at St. Michael's Church Hall by holding a coffee morning with 100 fairy cakes! Lyn Lloyd-Lewis took the Baton to Stoke Row WI in her son's Alfa Romeo sports car. The Baton was then transported from Stoke Row to Greys WI in a bull nose vintage Rolls Royce. The day ended at Grey's Court where the Baton was passed on to the Buckinghamshire Federation.

By 4 June the Baton will arrive at the Royal Albert Hall for the 100th Annual meeting in the presence of Her Royal Highness the Queen, the Princess Royal and the Countess of Wessex. The NFWI will hold a special WI Centenary Garden Party at Buckingham Palace in the

presence of Her Royal Highness the Duchess of Cornwall. Each WI was allocated one of the 8,000 places and Jackie Million is our lucky member.

In this special centenary year our WI has a healthy membership of 47. ●



FANCY A NEW SPORT? TRY ROLLERSKIING

Whether you would like to learn to race on rollerskis or just want to try a new way to keep fit and have fun, this may be the sport for you.

Come and try it and we are sure you will be addicted. Totally suitable for any age and any level of fitness (although daredevils make quicker progress!)

We are very lucky to have attracted a coach to hold training sessions for this exciting sport in Sonning Common on a Thursday evening. Each session costs just £5 and this includes the hire of all equipment (skis, boots and poles).

TIMES: 5.30 - 6.45pm and 7 - 9pm

(adults welcome too).

VENUE: Sonning Common Primary.

To book a place or for more information, contact **rachel_salmons@yahoo.co.uk**

These sessions were run at Sonning Common Primary School over the Easter holidays and have been really successful. The school have now asked the coach to stay for longer each Thursday which means that she can run more sessions and offer them out to anyone who lives locally. Adults and children welcome. ●



ISABELLA WINS HENLEY YOUTH FESTIVAL WITH ME!

Born into water
One October night
A cord for gills
I'll show you my tale
Of smiles and sighs
Of triumphs and trials

Growing up
In a shabby suburban street
On the fringes of a self-important town
With city ideas above its station
Red-bricked, semi-detached
Ten years now
Home

My family, always there.
Mum smiles with her eyes as
I confide and confess.
Dad, running-mad,
Checks his race times
With his blood sugar.
My brother, so clever,
His brilliant, burning light
Hurts my eyes.
Today, he's a unicorn
Called Timothy.
But that's alright,
It's all OK,
Because he has a label.

I loathe...
Cold, damp, drizzly days,
Dark and dreary.
Wind and rain lash
The windows.
Kept inside. Cabin fever!
Winter Monday mornings.
Early start in the dark.
School day.
Yanked from my bed.
Untimely, unready,
Unwilling.

Deep, dense crowds
On a London street,
Pushing, shoving.
The rank fumes
of city traffic,
Choking, gagging.
What a circus!

I love...
The smooth, rich taste
of hot chocolate
After a cold morning's run.
Gliding down my throat,
Caressing and soothing
Like a velvet glove.

My cats,
Soft, silky bodies weaving
Between my legs,
Welcoming me home.
The sweet, comforting smell
Of vanilla
And baking biscuits.

My friends,
Hazel and Ava,
Hannah and Emily.
They are
The sun on my back,
Warming me through.

And me.
Ravenously reading,
Books devoured:
Swallowed whole in one sitting
Like Grandma by the Big Bad Wolf.
Fingers flying along my flute.
Pounding the track,
Gliding the pool.
Chess champion,
Monopoly mogul,
I am Isabella.

By ISABELLA MCDONALD



PHARAOHS AND QUEENS

On a chilly April morning a collection of Pharaohs and Queens arrived at Sonning Common Primary School for an Egyptian day of activities.

A Cairo marketplace was taking place in the school hall and some of the locals (parents and grandparents) were staffing the stalls.

The children were taught how to write hieroglyphics, make pottery charms, salt dough and perfumed wax holders, carve into soap and many other things.

They made a great effort to dress up and all really enjoyed their day. ●



Photos taken by Caroline Jones

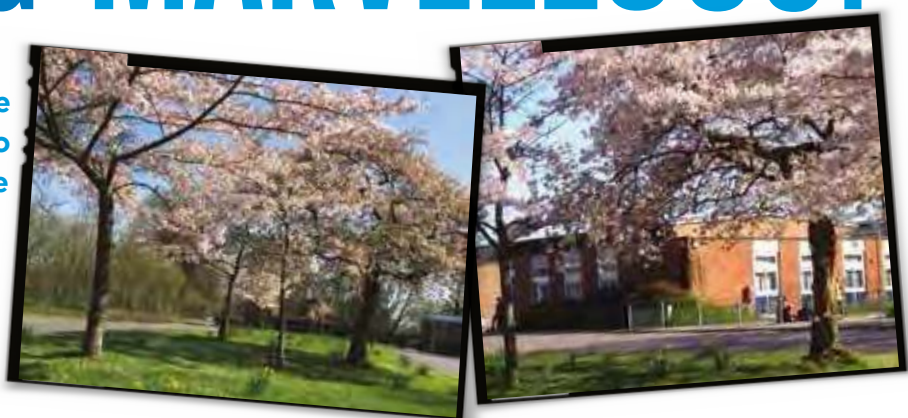
FRANCISCO MOREIRA

On this community page there are multiple celebrations of young children's learning and achievements. It is a sad contrast to report the death of a man who for some months had been living in his car in the Village Centre car park.

Despite many attempts to help and support him by some residents and the various agencies he was not able for whatever reason to follow up these offers. He died of multiple organ failure on Easter Saturday in the RBH having been taken there by ambulance after residents called for the emergency services. His body will be flown back to Portugal. ●

BLOOMING MARVELLOUS!

In our last issue we reported on the planting of the new cherry trees outside Chiltern Edge School. Those of you who regularly drive past the school will have seen that the new trees, along with the older ones, have been in glorious full blossom during the spring. Thanks again to the Village Gardeners for their help with planting. ●



CALLING ALL EX CHILTERN EDGE STUDENTS



The school is in the process of gathering a network of former students (alumni association) and would like any ex students to get involved! They are working in partnership with the national charity Future First, who is helping them to reconnect and keep in touch with former students.

The hope is that some of them may come into school and share experiences, jobs and careers after school/college and help with mentoring some of the current students. They would like to hear from people in all walks of life – those who are retired, or have entered apprenticeships, university, drama or the arts, engineering, building, retail, teaching, hair design, mechanics, the forces, finance and all sorts of other routes to employment.

Lots of ex students may have moved away or be living abroad, but they can still get involved – maybe by making a video recording, or even in these days of technology by a live feed via Skype into a lesson!

More information about Future First can be found here: futurefirst.org.uk/in-schools

All you need to do is follow the link below and fill out a short form. It shouldn't take longer than five minutes: networks.futurefirst.org.uk/former-student/chilternedge

Headteacher Daniel Sadler said 'we do hope you'll sign up, so that we can keep you up to date with school news and send you invitations to get involved if you'd like to. If you would like to see what we've been up to since you left, why not visit the school's website or Facebook page'.

www.facebook.com/chilternedgeschool
www.chilternedge.oxon.sch.uk

Please don't hesitate to contact Vicki Matthews – PA to the Headteacher – if you have any questions at vmat8567@chilternedge.oxon.sch.uk or phone the office on 0118 971500. ●

VILLAGE QUIZ RESULTS 2015

Many thanks to everyone who took part in this year's Village Quiz. There were 19 teams of up to six players which gave us a pretty full primary school hall.

The quiz was won by the Mongooses which means that, for the second year, a new name is added to the trophy. By supporting the quiz, the bar and the raffle over £400 was raised for PTA funds. The final scores and placings were as follows:

1. **Mongooses 107 pts**
2. **Graham's reunited 106 pts**
3. **Wishful thinkers 103 pts**
4. = **Two Hoots, Comets 102 pts**
6. **Joy's team 100 pts**
7. **Dead Rats' Society 99 pts**
8. **Between the Covers 98 pts**
9. = **Mixed bag, P and O 96 pts**

Closely followed by Minus I.Q's, Antipenultimates, Sedgewell Road, Teechers, Blotters, Green's Gremlins, Bejabs, Desperate Knights and Dad's Army.

Here's hoping everyone will want to take part again next year! ●

By MEL WHITE

Crafts in the African Community

The Guides had a great start to Term 2 with Project Africa. The girls were very lucky to be able to take part in this very special badge.

We had a visit from Matthew Smith, a local Scout who is off to do some charitable work in Africa for a month. The girls learnt about the Project and then completed some crafts that are important in the African community, including weaving, sun flower planting and even flat bread making (and eating).

We have a jam packed term planned full of activities including; Glow in the Dark Katakunung, Kayaking and Camp Out, as well as working on our Guiding Go For it Challenges with a Disco to celebrate the start of the Summer Holidays.

If your daughter is aged between 10-14 and would like to find out more about joining Guides, or would like to come along for a trial session please email onepeppardguides@outlook.com. 1st Peppard Guides meets every other Monday at the Scout and Guide Hall in Sonning Common. ●

By ANGELA CORLETT

CHOCOLATE MAKING WITH THE SECOND KIDMORE END BROWNIES



At the end of the autumn term Jess Sarson, local chocolatier, hosted a chocolate making evening at Brownies. The enthusiastic Brownies designed chocolate lollies and decorated them with popping candy, sprinkles, jelly sweets and edible glitter. They also designed chocolate bar wrappers and taste tested different chocolates.

Sophie and Charlotte (twins aged 7) described what they had done during the evening...

Sophie: I made a smiley face design and Charlotte made a pretty pattern. We wrapped the lollies, tied them with colourful ribbons and curled the ribbons. They looked beautiful and too good to eat!

Charlotte: Then we designed some packaging to make our dream chocolate bar. I made a 'Hockey Bar', perfect for filling my tummy after hockey practice on a Sunday. I drew a

hockey stick on the wrapper and wrote 'Hockey Bar' in bubble writing. I decided that it should be made of milk chocolate with balls of white chocolate inside, like hidden hockey balls.

Sophie: I made a milk chocolate 'Pony bar' and Ingrid, who helps at Brownies, helped me to draw the pony on the wrapper.

Charlotte: We also tasted different types of chocolate. The strongest chocolate (100%) was disgusting! It tasted bitter and not sugary at all. We had to eat some milk chocolate afterwards to make the taste go away.

Sophie: At the end I ate my lolly and chocolate bar and they were delicious.

The girls all worked really hard and had a lot of fun and learnt something about chocolate making that will contribute to the Brownie badge that they are working towards. ●

PEPPARD BOWLS CLUB

The recent "Taster Days" at Peppard Bowls Club were well supported and our visitors genuinely appeared to enjoy their bowling experience.

Our task now is turn the interest shown into the enrolment of new members. To this end we run weekly Club Afternoons on Mondays and Thursdays when you can hone your skills. This season we are playing friendly matches and are back playing in two leagues. To end the season we have included a new venture, "Candlelight Bowls", which should provide much

fun and camaraderie. It is not too late to come along and try your hand at Lawn Bowls. Please ring Jenny, our Membership Secretary, on 0118 924 2617 to find out more. ●






Moore's Painting, Decorating & General Maintenance Services

Spruce up your Home & Garden!
5% Discount when you quote: SCMAG

*Interior/Exterior Painting, Glossing, Staining. *Wall Paper Removal/Hanging. *Damaged Walls/Woodwork Repair.
*Repair & Maintenance of Internal/External Fixtures & Fittings.
*Fences/Sheds Erection & Repair. *Fence, Shed, Decking – Cleaning, Staining, Painting. *Garden Clearance/Maintenance

We invite you to contact us for a free, no obligation quotation.

Call: 01189 722002 or 07595 906940
Email: info@moorespds.co.uk Web: www.moorespds.co.uk



Oak Grove Garden Services

LANDSCAPING (HARD OR SOFT)
FENCING • TURFING • PATIOS • HEDGING
WATER FEATURES

James Watkins

'Oak Grove' • 13 Grove Road • Sonning Common • Berkshire RG4 9RH
Telephone: 0118 972 2659

Advertise in the
sonningcommon magazine

- Delivered to 1,850 addresses
- Prices from just **£27** per issue for an advert this size
- Perfect for local businesses and tradesmen

Call John Pearman to find out more on 0118 972 2381 or email advertising@sonningcommonmagazine.org

PEPPARD BUILDING SUPPLIES **FIRST CHOICE FOR THE PROFESSIONAL**




***FREE LOCAL DELIVERY**

- Competitive Trade Pricing
- Bulk Bags
- Specialist Insulation Stockists
- Indian Sandstone
- Bricks/Blocks /Aggregates
- Trade Shop
- Plenty of Parking
- Web Offers!

Call **0118 972 2028** / Sat Nav **RG4 8XA**
Visit www.peppardbuildingsupplies.com

*Terms and Conditions apply




Byways Dental Practice

Quality Care Dedicated Team

Byways provides friendly and professional dental care and is located in the tranquil surroundings of beautiful Checkendon village. Our services include:

- + All aspects of general dentistry
- + Teeth whitening and cosmetics
- + NHS for children & anyone in full-time education
- + Affordable payment plans
- + Flexible opening times
- + Ample free car parking

To book an appointment or for more information call us on 01491 680412 or email info@bywaysdental.co.uk



The Main St, Checkendon, RG8 0SP Tel 01491 680412

Computer Problems?

Is your PC outdated, misbehaving, virus infected?

Fault Diagnosis, Maintenance & Upgrades, Data Recovery & Migration, Virus Cleaning, Networking, Broadband and much more.

Call Robin Piercey
at Influential Computers on
01491 680036
or visit www.influentialcomputers.com

GRAHAM'S Painting & Decorating – Fascias & Soffits
MAINTENANCE Door & Window Fitting – Plumbing

Fitted Bathrooms – Floor & Wall Tiling – Fencing & Decking
Wood & Laminate Flooring – Sheds Supplied & Fitted
Garden Maintenance – Guttering & Flat Roofing etc...



FREE ESTIMATES 0118 972 3114

Thamesvalley Footcare

Foot Health in Your Own Home
Patricia Spender MCFHP MAFHP
corns, callus, ingrown nails, nail cutting, care of diabetic foot
07733 320702 or 0118 984 1132
email: pat.spender@gmail.com

Robin James
OPTICIANS



- Comprehensive eye examinations
- Full contact lens service
- Free specs for children
- Extensive range of designer frames
- Main agent for Zeiss and Rodenstock lenses
- Free parking

0118 947 2099
www.robinjames.co.uk
44 Church St, Caversham, Reading (opposite Waitrose)

BONNER LOCKSMITHS
INSURANCE APPROVED

DOORS & WINDOW LOCKS SUPPLIED & FITTED, CHANGED OR UPGRADED (BS3621)

DOMESTIC & COMMERCIAL PREMISES DIGITAL LOCKS • BARS

FREE NO OBLIGATION QUOTE

ALL AREAS COVERED  CALL OUT SERVICE

01491 680216 **CRESTWELL HOUSE** **FULL MEMBER OF BRITISH LOCKSMITH INSTITUTE**

Beech Lane, RG8 0PX • Woodcote Nr. Reading
PROPRIETOR: S. J. BONNER

Wisepower

ELECTRICAL CONTRACTORS LIMITED

T. 07810 798798 / 0118 972 2767
E. wisepower@btinternet.com
W. wisepowerelectricalcontractors.co.uk
4 Mullens Terrace, Chazey Heath, Reading, RG4 9ES

Customer Satisfaction our Priority

- Local, Reliable, Honest, Experienced Contractor
- Estd. over 30 years
- All electrical works undertaken including: new build, extensions, re-wires. outside/garden works
- Small or large works
- Test and inspect
- Fire alarms

Oxfordshire Schools and NHS Trust Approved Contractor.

Kidbys
Sheds & Timber Buildings

Tel: 0118 972 33 80
Kidbys Yard, 28 Kennylands Road
Sonning Common, Reading, RG4 9JT
www.kidbys.co.uk Fax: 0118 972 10 02

CURTAINS, BLINDS, PELMETS, TIE BACKS ETC.

ALL AT COMPETITIVE PRICES

CALL CAROLINE ON
0118 954 2448
OR
0781 561 0007

Time 4 Pilates 

Want to look and feel great!!
Try Pilates – controlled, yet gentle exercise

Classes in Sonning Common area
Including Ante and Post Natal

Mondays / Tuesdays / Thursdays
Beginners and Intermediates
Max 12 in Group (6 in Pregnancy classes)
Private sessions also available

Christine Brook – Member of Body Control Pilates® Association
Ring 07789 717017 or email chris@time4pilates.co.uk
Website at www.time4pilates.co.uk

VILLAGE BARBERS

0118 972 3930
24 PEPPARD ROAD
SONNING COMMON

10% OFF WITH THIS VOUCHER
CHILDREN'S PLAYROOM

CUT - £12 ONE GRADE - £9 TWO GRADES - £10
CUT & BLOW DRY - £13 CHILDREN UNDER 10 - £9
CHILDREN 10 TO 16 - £11
SENIOR CITIZEN - £8 (MON-FRI) RESTYLE - £15
Late night opening Thursday to 7.00 pm

Reading Summer Proms

SAT 1 JUNE - SAT 4 JULY 2015

Another summer season of music from groups across Reading and the surrounding areas. The time, energy and commitment of the members of each of the groups is what helps keep music well and truly alive in Reading.

JUNE 2014

- | | |
|-------------------------------|---------------------------------|
| 1 Forbury Bandstand | 20 Henley Choral Society |
| 6 Woodley Concert Band | 22 Forbury bandstand |
| 6 Music@Reading | 26 Henley Symphony Orchestra |
| 7 Music@Reading | 28 West Forest Sinfonia |
| 8 Forbury bandstand | 29 Forbury bandstand |
| 13 Reading Phoenix Choir | |
| 13 Wokingham Choral Society | |
| 13 Forbury bandstand | JULY 2014 |
| 20 Reading Symphony Orchestra | 4 South Chiltern Choral Society |
| | 4 Reading Bach Choir |
| | 6 Forbury bandstand |

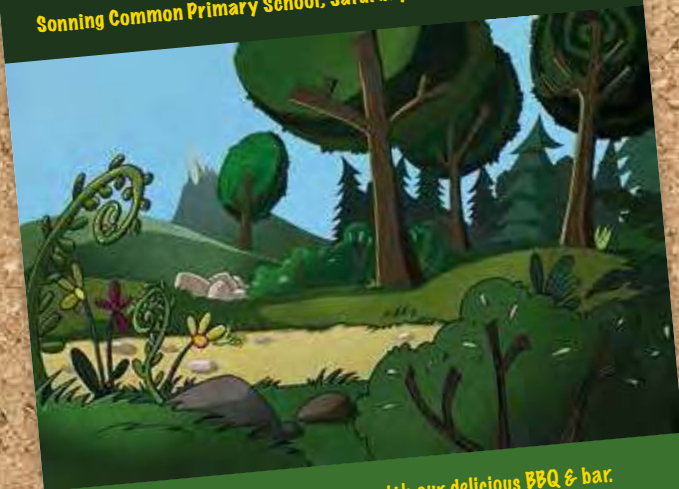
Church News

OPEN MEETING
Kidmore End School, 3 June at 8pm

To discuss the future of the Parish. Meeting led by Revd Charles Chadwick, Parish Development Advisor. All are welcome to attend this meeting not just church goers.

THE GREAT OUTDOORS SUMMER FAIR

Sonning Common Primary School, Saturday 13th June, 12 till 3pm



Lots of craft activities along with our delicious BBQ & bar.
Maypole dancing, Bounney castle and lots more...
Everybody welcome to come along and join the fun!



ENTRY:
ADULTS £1, CHILDREN 50P



THE PLAYERS WILL BE ORGANISING A
MURDER MYSTERY SUPPER, SOME PLAY READINGS AND ANOTHER PRODUCTION
VERY SOON.



If you are interested in being part of our group please
contact: Rosemary House on fabrezan11200@gmail.com



Wallingford proudly presents...

MODEL RAILWAY EXHIBITION

Sunday 21 June 2015
10am to 4.30pm

at St John's Primary School,
St John's Rd, Wallingford OX11 9AG

15 model train layouts and trade stands
- hot & cold refreshments on sale

Admission: Adults £4 Children £1.50 Families £10
For more information contact 07595 255150

Live Music & Beer Festival

WALLINGFORD Friday 12 & Saturday 13 June 2015

The Regal Centre Wallingford, Oxon OX10 0AL
Saturday Afternoon £5
Family Session 2.00 - 4.00pm
Featuring: Vincent White Band, Winners of 'Mainstage Wallingford', Slomp & Moller, Howlin' Matt

Friday Night £15
Doors Open 6.30 7pm - Midnight
Dr Feelgood
Plus: Laurence Jones, Matt Woorey

Saturday Night £15
Doors Open 6.30 7pm - Midnight
Chantel McGregor
Plus: Ben Poole, Armadillo Blues

Full Weekend Ticket £25

bluesandbeer.co.uk

South Chiltern Choral Society
Paul Banks - Conductor
Ian Huxley - Piano

ALL AMERICAN
4th July

Leonard Bernstein
Chichester Psalms

Old American songs - arr. Aaron Copland
Jazz classics - arr. Gwyn Arch

Saturday 4th July 2015 at 7 pm
Upton Road, Gillingham, Kent ME14 3JY

Tickets £12 (U21s £6)
via our website -
www.southchilternchoralsociety.org.uk
or from Caroline Jones 07500 032840

Registered Charity no. 297583

NOTTAKWIRE'S FUND-RAISING EVENT

'Thanks For the Memory'

Songs of 20's, 30's, 40's & 50's.

Saturday 27 June and Sunday 28 June

at Sonning Common Village Hall. Doors open @ 1pm.

Raffle, tombola, bottles, books, tea/coffee & homemade cakes. Performance starts at 2pm.

Tickets £4. Available from 1st June at 'Occasions' or reserve on tel: 0118 947 7302

Get your tickets early to avoid disappointment!
We look forward to seeing you

ALL PROCEEDS TO VILLAGE CAUSES

Sonning Common Pre-school

Annual fund raising event

Summer Fair

Sunday 28 June, 11.30 to 2pm in the Pre-school garden. This event will include a bar, bbq, silent auction, bouncy castle, tombolas, lots of games for the children and much more.

All welcome - Entry for adults £1, children free.

Sonning Common Village Cricket XI Fixtures 2015

DATE	OPPONENTS	VENUE	START
April 26	Ipsden	A	14.30
May 3	Nettlebed	A	14.00
May 10	Henley	A	14.00
May 24	Whitchurch	A	14.00
May 31	Holton & Wheatley	A	14.00
June 6/7/8	Annual Tour 2014	A	14.00
June 21	Crowmarsh	A	14.00
June 28	Swyncombe	A	14.00
July 5	Peppard	A	13.30
August 2	Harpsden	A	14.00
August 9	Kidmore End	A	13.30
September 6	Highmoor	A	13.30
September 13	Moulsford	A	13.30

Nettlebed Art & Craft Show 2015

PAINTINGS, DRAWINGS & CRAFT BY LOCAL ARTISTS

SATURDAY 1ST AUGUST / 12 noon - 6pm

SUNDAY 2ND AUGUST / 10am - 5pm
at Nettlebed School

Free entry & parking. Teas available all day.
www.nettlebed.org.uk

Visitor information / artist or craft entry form
Email: Nettlebedas@yahoo.co.uk

FREE ENTRY!

JOIN US AT THE ...

KIDMORE END PRE-SCHOOL

SUMMER FÊTE

27 JUNE 2015 - 11am - 3pm

AT: KIDMORE END PRIMARY SCHOOL, RG4 9AU

Tractor Rides
Treasure Hunt
Hog Roast & Bar
Cake Stall
Welly Wanging
Raffle
Silent Auction
Bouncy Castle
...and much more!

Event kindly sponsored by **baslandscaping**

www.kidmoreendpreschool.co.uk

Registered Charity Number 1046030

Call My Driver

**Friendly & Reliable
Taxi Service**

Based in Sonning Common

07796 688477

T.C. FULLER PLUMBING & HEATING

- Installation • Maintenance • Service • Repair
- Boiler replacement, heating system upgrade & adaptations, power flush.
- Hot water cylinder replacement.
- All plumbing work undertaken.

Bath/Shower rooms, water softeners-salt supplied.

- No call out charge • Free estimates • Fully insured

Tel: 0118 9724097

Mob: 07800 914 880



Shaun Guard TV AERIAL SERVICES

- **Poor Reception Solved** - Aerials repaired & supplied
- **TVs** - Hung on your wall for you. Also supplied & tuned
- **Extra TV Points** - For aerial and Sky (In HD!)
- **Sky TV** - Also Foreign Language TV

Call Henley-on Thames 01491 699114

A part of  OXFORD AERIALS



Whatever your electrical needs are, HHP Electrical can help...

With electrical services ranging from:

- Lighting / Power upgrades
 - Full / Part Rewires
 - Fault finding and repairs
 - Full Electrical Safety/ Landlords Inspections
- All to suit the exact requirements of our clients.

0118 9724108 - www.hhpelectrical.co.uk

info@hhpelectrical.co.uk

Family Hairdressing any age & any style

.....and all in the comfort of your
own home.....

Ring Maureen on
0118 972 1074

DK Builders

Daren Kilroy



BRICKLAYING, EXTENSIONS,
GARDEN WALLS, PATIOS ETC



OVER 20 YEARS EXPERIENCE

CAVERSHAM, READING 07951736745
0118 3759407

Providing a professional and friendly legal service to the
local community and beyond for over 80 years!

- | | |
|---|----------------------|
| • Residential & Commercial Conveyancing | • Trusts & Tax |
| • Landlord & Tenant | • Powers of Attorney |
| • Company & Commercial | • Divorce & Family |
| • Directors & Shares | • Mediation |
| • Employment | • Disputes |
| • Wills & Probate | • Debt Collection |
| | • Notarial Services |

Goring: 01491 879100
Pangbourne: 0118 9842266

info@richardwilsonlong.co.uk
www.richardwilsonlong.co.uk

 **Richard
Wilson Long**
Solicitors

 **gunningplumbing.com**
• plumbing • heating • gas •

**ALL DOMESTIC PLUMBING, HEATING, & GAS WORK
INSTALLATIONS, REPAIRS, & EMERGENCIES**

**CAVERSHAM BASED
GAS SAFE REGISTERED ENGINEER**
SERVING READING & THE SURROUNDING AREA

CALL ANDREW ON 07815 304 931

www.gunningplumbing.com



EAT SLEEP ROW REPEAT...

It's an early start with a hurried breakfast, but we have to eat, even if we don't feel like it, because we'll need the energy later. Then a short trip to Henley for 8am to find the coaches busy planning our weekend sessions. There are many different combinations of teams. We row in Doubles, Quads and Eights. Rowing is with a single blade and sculling is with two. You start to learn sculling first because the two blades give you more balance, a bit like stabilizers. Once you master the basics you begin to learn the techniques needed to make the boat go faster and smoother through the water.

Once the boats are ready and the blades are positioned, we're off! A short paddle round the bend, under Henley Bridge and past Leander Rowing Club towards Phyllis Court. There are already joggers, cyclists and dog walkers on the footpath but at this time of the day the river is ours. Water laps on the blades, morning mist drifts over the water and a swan stares with curiosity and then dips its head beneath the surface. It's calm out here and although the noise from the riverbank travels towards us, being on the boat makes you feel that you are free.

However, the peace doesn't last for long. Once we start our drills the pace increases and you become aware that you need to hold your rhythm to keep up with the rest of the crew. The rain can be pelting down and the wind seems to want to blow you in the opposite direction. Your legs are burning and your fingers numb with cold, but you are part of a team and you don't

want to let them down so you just keep going. At 10.30am we return to the club for a well-earned second breakfast of hot chocolate and toast. Then it's straight back on the water and we train again until 1.00pm.

Stopping only for Christmas and Easter we have been on the river, come rain, shine or snow, either training or competing every Saturday and Sunday since September 2014. And it's not just at weekends, we also train in the club gym three evenings a week.

We have been lucky enough to complete in several races already this year, along various stretches of the River Thames, with a good rate of success. One of our most exciting races to date being in Putney, London, where we raced the famous Oxford and Cambridge Boat Race course in a woman's eight and came an amazing 8th out of over 100 boats!

We have also competed at Dorney Lake, the impressive 2,200m eight-lane course used to host the 2012 Olympic and Paralympic rowing races. Here, we both won our respective divisions, Grace's boat coming first overall and Alice's boat second out of 61 boats.

We are having a fantastic time rowing. It's really hard work, our hands are blistered and sore, and lie-ins are a thing of the past, but with the summer regatta session coming along, we couldn't be involved in a more exciting and rewarding sport.

For more information about the club, visit their website: henleyrowingclub.co.uk

GRACE JOHNSON & ALICE JONES



GRACE JOHNSON AND HER TEAM WIN GOLD AT NOTTINGHAM JUNIOR FINALS

Grace in a quad (sculling with 2 oars) and Alice in a Four (Rowing 1 oar). This was a UK regional event and Thames Upriver for whom they were representing won the whole event overall.

Then they went to Marlow Spring Regatta and Grace won in the same Quad and they both raced in an 8 and won that too!

They are both going to Bedford Regatta, 10 May and then on the 24 and 25 May they are racing in the National Schools Regatta - this is a really big event.

It is immensely hard work but that is why they are doing so well because they are extremely focussed and of course their school work has to continue without being affected so they do extra homework in lunchtimes, to make up the time they don't have for study at the weekends!

Red Kite Electrical



Top quality electrical & Solar PV installations
Now back working in Sonning
Common and the South Chilterns



sparks@redkiteelectrical.co.uk

www.redkiteelectrical.co.uk

0118 907 1834

0788 273 7402



Jefferies
ACCOUNTANCY SERVICES

01491 845575

keith.jefferies@jcslimited.co.uk

An Accountant That Will Save You Time & Paper Work

Excellent customer service & free initial consultation

- Self-Assessments
- Corporation Tax Returns
- Business Advice
- Accounts



CERAMIC WALL & FLOOR TILING

Adhesive / Grout / Trims Supplied
Floor Levelling & Plastering
Free Estimates & Advice

Call Mick 0118 901 1777 / Mobile: 07841 586003

WESTWOOD MASSAGE AND BEAUTY

Facials / Manicure / Pedicure / Eyebrow and
Eyelash tinting / Waxing / Swedish Massage /
Hot Stone Massage / Aromatherapy Massage /
Indian Head Massage

Competitive prices, special offers and gift vouchers

Mobile appointments also available

Westwood House, Hillcrest Lane, Peppard Common, RG9 5JF

westwoodmassage@hotmail.com

or call Bethan on 07921 458601

www.westwoodmassage.co.uk



Kennylands Gymnastics
(formerly Thames Valley
Gymnastics Club) offer
a range of classes for
boys and girls of all
ages. Classes cater
for preschool, recreation,
freestyle gymnastics as well

as competitive gymnastics for those who
express the talent and desire. Parties are
also available on weekends and we even
provide an opportunity for adults who wish to
have a go themselves.

Contact us: Kennylands Gymnastics

Bird Wood Court, Sonning Common, Oxon, RG4 9RF

T: 0118 9724 401 / 07846 185 905

E: kennylandsgymnastics@hotmail.com



www.kennylandsgymnastics.com

HEIGHTS

Tree Care

- All Aspects of Tree Work
- Hedge Cutting
- Private and Commercial

Laurence Williams

0118 9721003 07813 586 735

info@heightstreecare.co.uk

www.heightstreecare.co.uk



Fully Qualified Professionals
£5 Million Public Liability Insurance

**Need an experienced
book keeper who knows
QuickBooks back-to-front?**

Call Richard today if you are a sole
trader or partnership and would like
a flexible and cost-effective service.

KJW | Book keeping

0118 972 3040 | 07747 614859 | rtaylor@kjwcw.co.uk

Graham Blake
soft furnishing

- Loose Covers
- Curtains
- Re-upholstery
- Carpets
- Conservatory Blinds
- Quilted Bedspreads
- Tracks & Poles
- Plantation Shutters

TEN YEAR GUARANTEE

For personal, helpful service, please telephone

01844 261 769

07802 213 381

www.grahamblake.com

Established Family Business

Not all Estate Agents are the same ... *but don't just take our word for it ...*



"I found everyone at Bridges professional. They were very respectful of our difficult situation and were always consistent in giving feedback. From my interaction with the staff I could tell that their aim is to provide an excellent service and therefore I would highly recommend them."

MS J RITCHIE
Kidmore Lane, Sonning Common



"I had originally instructed a village agent without success and I decided to go with Bridges due to their personal service. And I was not disappointed – the entire team were proactive not only in getting potential buyers through the door but in driving the sale through to the end."

MS A BROWN
Baskerville Road, Sonning Common



"Thank you all for the excellent service that we received during the sale of our property. You handled the matter very efficiently and your staff were helpful and friendly. Having tried a village agent, we would gladly recommend your services to anyone wishing to buy or sell a house in Sonning Common."

MR & MRS B ASHLEY
Widmore Lane, Sonning Common



"Bridges were very professional throughout the sales process which was a marked difference to the local competition. I would recommend Andy & his team to anybody looking to sell in the Sonning Common area."

MR A HARDING
Kennylands Road, Sonning Common

COUGH TO HALF

By PHILLIPPA TAPHOUSE

In January, after too many mince pies and Quality Street, I set myself the challenge of running the Henley Half marathon in the hope that I would become more streamlined and healthier.

I had dabbled, and I mean dabbled, in running two years ago when I ran the Race for Life...a 5k run for breast cancer...but once I had finished, I hung up my trainers and carried on as normal.

This time...I was serious. I told as many people as I possibly could and posted on social networks everywhere. I AM RUNNING THE HENLEY HALF. I felt by doing this, I couldn't back out and prove to everyone and myself that yes, I really could do this.

I asked my lovely friend Bronwyn to help me train. I knew that by roping her in that I definitely wouldn't be able to back out. Bronwyn won't let me back out. Bronwyn is strict and hard on me but also extremely encouraging and she never lets me down. If we say we are running, then we run...no matter what. Ice, snow, rain, sun...we are there pounding the pavements. In fact the one time I turned up in the playground in my non-running clothes on a designated

running day, shivers went down my spine and it wasn't just that chilly April wind.

So back in January our journey began. It was cold, you could see our breath. It was hard. Did I mention it was cold? The very first run, I could only manage 7 minutes without stopping. So we interval trained. Running for 2 minutes, walking for one minute (I did love the walking, it was the only time I could talk) and gradually as the weeks went by, I started getting better.

The first Friday I rang around the Millennium Green three times (not forgetting running there and back), I finally thought YES I can do this. Paula Radcliffe eat your heart out and then disaster. One word FLU! Having not had flu for years, it hit me very hard. I couldn't move or get out of bed. For three weeks the running had to stop. It was devastating. Just when the running bug had bitten, I felt like I was never going to walk again...let alone run.

The body is an amazing thing though because soon I was back up and out there running my little heart out until, oh no...an eye hemorrhage (who even knew such a thing existed). Not only did I look like an extra from the Exorcist, but I now couldn't run for a week, and just when we had finally

progressed from running around the Millennium Green and I was feeling like a proper "runner".

Another week off and we tied our laces and started again. Flu gone, eye healed. Nothing could stand in our way...apart from my three week trip to Florida over Easter.

Parting from Bronwyn was such sweet sorrow. "Make sure you run three times a week" she shouted as I left..."I promise" I shouted back. I packed my trainers and running gear deep inside my suitcase and there they stayed until I unpacked them when I got home.

So I'm back on the road again...it's hard again, it's slightly warmer and my legs are killing me...but I will do it...otherwise what will Bronwyn say?

Oh and PS...please don't call me a jogger. It's much much harder than that. I am a runner!

Phillippa will be posting an update in the next magazine - look out for her around the village! ●



Fund raisers WITH A MISSION



The local LIONS club serves the villages of SW Oxfordshire and in the last few months has continued with its fund raising for charity projects. Sadly it is about to close due to lack of new members joining to enable them to sustain their efforts in support of the community.

100 draw tickets for a giant Easter Egg were sold by Roy Wing and Chris Butler co-owner and proprietors at Pet County Supplies in Wood Lane, Sonning Common, in the process they raised a grand total of £102.02 for the local LIONS Club charity projects.



Darren Pendry having drawn the winning ticket and presenting the giant Easter Egg to Ann Acres together with her husband Gary Acres.

A donation from the LIONS to the Footsteps Foundation of £ 750 on Saturday 25 April will pay for half of a 3 week treatment programme, which comprises up to 2 hours each day for 3 year old Sohail Geisberg-Bamford from Didcot, at the Footsteps Centre in Dorchester-on-Thames.



Draw winner Mrs Jan Harris from Emmer Green who came to collect her prize from Roy Wing, owner of the pet shop, on Saturday 28 March.

Another giant chocolate Easter Egg was raffled by Daisy's at the Dog Coffee Shop in Peppard Common on Good Friday. In the process a grand total of £71.87 was raised. The lucky winner was Mrs Ann Acres from Caversham.



Photo shows (L-R) Lion Derek Robinson, Sohail's mother Samantha Bamford, physiotherapist Jurek Puchala, Lion David Croft along with 3 year old Sohail.

The Centre provides access to a team of highly experienced physiotherapists and equipment for children suffering from varying conditions or disorders such as cerebral palsy, muscular dystrophy and even epilepsy. Amongst some of the specialist equipment used is "The Spider" which, developed in Poland, enables therapists to carry out a range of exercises whilst the child is supported by elastic ropes which are adjusted to allow different parts of the body to be freely exercised.

Other more traditional therapeutic aids and equipment are also used such as balls, rolls, trampolines, treadmills and ladders to facilitate therapy.

This combination of therapy not currently available anywhere else in the U.K. is highly successful at enhancing and improving physical development as well as building confidence, which often also positively affects speech and cognitive capabilities.

Why not meet the LIONS for a drink at one of their informal meetings held at 8.00 pm on the second Monday each month in Goring Social Club?

To learn more (without commitment) about what LIONS do and how they operate please phone:

DEREK ROBINSON (Goring)
01491 872857

DAVID CROFT (Woodcote)
01491 682790

JON SOLMAN (Sonning Common)
077 8888 5682

Gym and T

By CHISTINE ATKINSON



The title of this article was taken from a headline in the Henley Standard which caught my eye and inspired me to find out more about the local branch of Green Gym.

We have been very lucky in this village to have enjoyed the Health Walks which were first thought of by Dr William Bird when he was working at the Sonning Common Health Centre. He realised that many people needed to exercise more, but found it difficult to do it around their work, or found gym membership expensive. After creating the concept of Health Walks, the idea took off and there are now many health walk organisations around the country.

Dr Bird also recognised that many people enjoy gardening and being outdoors and decided to try and organise a group to help in nature and conservation, as well as having the opportunity to improve their health and well being.

And so the Green Gym was born in 1997...the word gym was used to intimate that the work was also to do with fitness. The original team had help from a leader who worked with The Conservation Volunteers (TCV). They had contacts in areas that needed some help and could provide tools and training courses. South Oxfordshire District Council (SODC) provided a shed for storage at Bishopswood, which was managed by SODC at the time.

Within about 18 months the group became self managed. They shared out all the roles – tool manager, site coordinator, training etc – and had their meetings during the tea and cake break – what a good idea! There is a quarterly meeting to plan ahead, but most other things are arranged during the informal



onic!



breaks – with lots of homemade cake consumed!

The group have worked at many sites around the area – from the local primary school to Ewelme and from Clayfield Copse to Nettlebed.

With the `GYM` comes the `TONIC`! There is a warm up before starting work, and the green gym has been found to help with mental wellbeing – giving people an opportunity to chat about all the things going on in their lives, which many find therapeutic. The physical and mental `gym` work compliments learning about nature and conservation.

The group has now been going for more than 15 years – which is a great reason to celebrate with another cake!

So if you fancy joining them and getting outside in all weather, there is no need to book a place – you can just turn up when you can. Two weekly sessions are generally run, on Thursday and Saturdays, so suiting those who are still at work too!

There is no need to worry about not knowing what to do as it all becomes clear as you go along, and no need to be concerned that you may not be strong enough to do all the work as everyone works at their own pace. There are plenty of people in their seventies – and sometimes eighties – taking down trees, putting in fencing and clearing scrub. And it doesn't cost a penny – just bring along a cake! While most of the group is between fifty and

ninety, there is also the opportunity for younger people to join in at the Saturday sessions. ●

So – as you walk and drive round this lovely part of the Chilterns that we are so lucky to live in – think of the green gym members who are helping us to enjoy the countryside – and if you feel that you would like to join them please contact them on 0118 9723528, or via this website <http://sonningcommon.tcv.org.uk/contact-us/>

There are lots more photos of their work here – <https://plus.google.com/photos/108211597216249635075/albums>

Property Maintenance

Plumbing, Electrics, Decorating,
Woodwork, Roofing, Brickwork, Drains,
Kitchens and Bathrooms

All Exterior, Groundworks and Garden work
Property Management & Lettings

Please call Roger on 07752 759908

colbeckproperty@gmail.com

Computer repairs

Specialist in home-user & small business support:
Virus removal, slow computer, data backup,
data recovery, booting problems, hardware diagnosis

Over 10 years experience

0759 898 3292 jason@millwardit.co.uk

millwardit.co.uk

TOMALIN & SON

Funeral Directors



A Family Owned Funeral Service



Tel: (01491) 573370

ANDERSON HOUSE
38 READING ROAD
HENLEY-ON-THAMES
RG9 1AG

Golden Charter
Funeral Plans

TOMALIN & SON

Pre-Paid Funeral Plans



For more information, contact



Tel: (01491) 573370

£40 John Lewis Voucher

or

£40 Donation to Sue Ryder Care
with each plan taken out on production of this advert

Golden Charter
Funeral Plans



JJC Electrical Services Limited
Professional, Reliable and Local

Jerry Cole

Sonning Common Electrician

Telephone: 07834 346 487

E-mail: jjcelecserveitd@talktalk.net

Website: www.jjcelecserveitd.co.uk

- Fault diagnosis, repair and rewires
- New installation work
- Fuse board changes
- Electrical Inspection
- Landlord Certificates

ELECSA

Approved Contractor

www.elecsa.co.uk

PET COUNTRY SUPPLIES

We have been trading in the village for
over 50 years

WE ARE PROUD SPONSORS OF

- THE LOCAL FISH BUS
- DOGS FOR THE DISABLED
- BINFIELD HEATH DOG SHOW

We have old fashioned friendly Service

We can't stock everything but we can
get most things for your pet!

We deliver free on orders over £25.00

COME AND SEE US !!

43a Wood Lane

Sonning Common RG4 9SJ

0118 9723495

Email: interestedin@petcountrysupplies.co.uk

www.petcountrysupplies.co.uk

Open.....Mon to Sat 9.am to 5.30pm (5pm Sat)
9am to 4pm Weds

Closed all day Sunday and Bank Hols

SONNING COMMON PRE-SCHOOL

GROVE ROAD
SONNING COMMON
0118 972 4760

We are a happy friendly pre-school
welcoming children from 2 years
6 months, to come and learn through
play. We have a purpose built building
& extensive play garden.

Morning sessions are 9.00am - 12.00pm
Afternoon sessions are 12.00pm - 3.00pm



SAVE MONEY WITH



**CHECK OUT
THE MONTHLY
OFFERS AT
OUR SHOP
OR
WEBSITE**

FRED SLOUGH NOT FORGOTTEN

We have recently returned from a trip to Antarctica and the journey included a day in The Falklands. Some readers may at present be watching *An Island Parish* which is set in the Falklands and be able to see for themselves how beautiful and unspoilt these islands are.

Our day there was warm, bright and beautifully sunny with a light breeze. We were both fairly well informed about the conflict in 1982, we had just got married in the previous month and can well remember our apprehension about how severe and how long the war would go on for. We were also living in Sonning Common and remember the very sad news about Fred Slough's death aged 19. Many will have seen the plaque in the Village Hall for him.

We visited the impressive war memorial in Stanley and found his name along with the other soldiers who lost their lives there. The memorial overlooks a sound of very blue water and is a most tranquil and peaceful spot with gorgeous views over the water. It is extremely well maintained and the war heroes are remembered and respected throughout The Falklands. Nearby there is a bust of Margaret Thatcher and a road named

after her, Thatcher Drive. A recent poll in The Falklands had a 98% vote in favour of staying British. Lots of the houses sport Union Jack flags and the population seem more patriotic than perhaps we do.

There is a delightful museum in Stanley, and as well as showing the history of the islands there is a lot of information about the conflict. They were showing a short film about the war from the point of view of the children, which we found so moving. There was film showing the soldiers and tanks of the Argentinian army marching up the streets of Stanley and it made us think of our children looking out to Grove Rd and Lea Rd and seeing tanks and soldiers invading Sonning Common, as in scale they are quite similar.

We had a further walk just out of the Main Street in Stanley and there has been a memorial wood planted to the fallen. 255 British Military personnel and three Falkland Islanders died in the conflict and there has been a tree or shrub planted for each, presenting a very poignant display.

We found the shrub with a dedication to Fred Slough. Fred was a member of 2nd Battalion of the Parachute Regiment, who many will remember at the time as their commanding officer Colonel 'H' Jones received the Victoria

Cross posthumously in the battle for Goose Green. Sadly Fred died in one of the last actions of the conflict, the taking of Wireless Ridge, the Argentinians surrendering a few hours later.

We sat on a bench in the sun and thought and remembered the sacrifice of the soldiers and particularly, Fred. ●

TRISH & STEVE ROCKELL
Grove Road





A LIFELINE FOR YOUNG MUMS

By COLLEEN PAVIOUR

If you live in or around Sonning Common and are struggling with any aspect of looking after young children, chances are the Rainbow Centre can help.

Action for Children's Rainbow Centre, located at Chiltern Edge School in Reade's Lane, offers a full programme of activities, useful parenting courses and a range of support for mums and dads of under 5s. Best of all, it's free.

Centre Manager, Jo Vines, said: "It gives people the opportunity to make friends and meet people going through something similar to them - and to get support and guidance, if they need it."

She added: "It's a rural area and there are quite a few parents living in isolation. It's lovely to bring these pockets of communities together."

Stay and Play on Thursday mornings

(10 -11.30) is a play group with toys of every description, craft and messy play stations, a baby area and outside space with balls and a sandpit so toddlers can run around in the fresh air. After an hour of play, children get a healthy snack before gathering for a song session.

Staff work with local health visitors to offer speech therapy (booking required), baby clinics, family support groups and courses, such as first aid, cooking on a budget and preschool preparation for two-year olds.

There's also a childminders and nannies support group, a baby massage course and a playgroup just for twins and multiple births.

Personally, the Rainbow Centre has been a lifeline for me. When we moved to the village last year I had a toddler and a young baby. I was sleep-deprived and homesick for London, with no friends or family nearby.

People talk about meeting friends at the school gate, but I met mine at the Rainbow Centre.

MORE FROM THE RAINBOW CHILDREN'S CENTRE

Off site sessions include another Stay and Play at Woodcote Village Hall on Tuesdays (10-11.30am) and the mobile bus on Wednesdays 1-2.30pm. Rhyme Time singing sessions happen on the first and third Mondays of the month at 10am at Sonning Common Library, as does Story Time, every Saturday at 10am.

Visit oxonchildrenscentres.org.uk/rainbowcentresonningcommon, pick up the latest activity programme at the centre or library, or phone **0118 9724024** for more information. ●

SONNING COMMON PRE-SCHOOL CELEBRATES WORLD BOOK DAY

Sonning Common Pre-school celebrated World Book Day by dressing up as their favourite characters. We had a variety such as Little Red Riding Hood, Teenage mutant hero turtle, Spiderman, Alice in wonderland, aliens love underpants, Elsa from Frozen to name but a few. We made our own books and sang lots of songs.

Ofsted inspected the Pre-school just before Christmas and we reached an overall grading of Good. The pre-school

has undergone many changing over the past few years and this was the first inspection since the new building had been built. The inspector commented on how effectively staff followed children's interest and lots of positive comments were given to her from the parents.

The children have been focussing on all about me, people who help us, favourite books, growing and life cycles.

Sonning Common Pre-school is open Monday to Friday 9am- 3pm. We have

spaces available for children aged 2 1/2yrs to 5 years. If you would like some more information please call Ellie or Clare on 01189724760 or email info@sonningcommonpreschool.co.uk ●



HELLO EVERYBODY! IT'S ZACK HERE.

The weather's getting warmer now, but while it's still cold I have been playing a game on my tablet called Terraria. It's really fun! However, I'm looking forward to be able to go outside and play because to me it seems like ages since the sun shone. I'm also looking forward to the skate park being built. My mum and I walked our dogs around the site recently and it looks really exciting. I can't wait!

What are you looking forward to? Email me at junioreditor@sonningcommonmagazine.org and let me know. See you next time.



ZACK

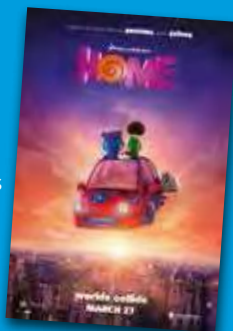


TERRARIA

Terraria is a game costing £4. No offence to any Minecraft players but I think Terraria is even better. For instance, on Terraria you can get more than 2000 different blocks, 30 different bosses and even 400 different weapons. You can even get or make wings. Here's a tip: to make pixie wings, you need an anvil and 100 bits of pixie dust. Happy playing! ●

FILMREVIEW | Home

Home is all about a cute, little Boov alien called Oh. Oh is a happy alien even though he makes lots of mistakes! He thinks he has lots of friends, even though most of them don't like him. The silly leader of the Boov comes up with a 'running away' plan from their enemy, the Gorg, which leads to a friendly invasion of Earth. Oh makes friends with a human girl called Tip, but also accidentally leads the Gorg to Earth. What will Oh do? You'll have to see the film to find out! I think you'll really like it. ●



BOOKREVIEW | Alex Rider

Recently I have started a fantastic new series called Alex Rider, about a 14 year old boy who is recruited into the British Secret Service. It is a series of 12 books, written by Antony Horowitz, and I'm on the third one. I can't stop reading them! All the stories have great descriptions, hundreds of adjectives and lots of suspense that will build all your thoughts into one giant 'what happens next?!'

TERRARIA

WORDSEARCH

E B U I W M Y W N S Z Q N U A
Z A U P N T I O I T I C U G P
K L F N Z J R H W T G K O C H
S B F R N T A U K E S B L E T
H G S N E I K R F U L W Y S L
J Z N L A J E J B I S W N U G
B N E I Z H L S N Y V D T E S
O K A B W B X E S U O N A F L
S L W G D K G O X O I E X U Z
S E T A R I P D F E L U W Z M
E U X D N C R W S K M V W K B
S R R Y N A Q P N L A O A S D
N P T E R R A R I A N P C H I
Q O Y A Y U X A W I U U G I Y
X F T Y F R P X T E Q E X F O

BOSSSES
BUNNIES
FOOD

GOBLIN
NPC
PIRATE

SKELETRON
TERRARIA

TWINS
WINGS

"We turn feelings into flowers"



42 Wood Lane • Sonning Common • RG4 9SL
0118 972 1240 0777 179 0916

www.brambles-sonning-common.co.uk

MIKE DOCKREE WINDOWS

TradeMark for windows, doors & conservatories

We provide and fit

- Windows
- Doors
- Conservatories

In a colour of your choice and also

- replace misty and damaged glass
- hinges, handles and locks

We can also give your conservatory roof an upgrade both in material and colour.

We also provide and fit:

- Fascia
- Soffits
- Guttering
- Cladding



Our windows and conservatories come with a comprehensive 10 year guarantee, full independent inspection with all certificates

Mike Dockree has 30 years' experience

For your free quotation

Ring: 01189724376 or 07785928190

Email: mad@windows2002.fsnet.co.uk

10% discount on windows & doors
when you quote MAD2015

GIRL POWER

Female Electrician

Local - Honest – Reliable

Please call Jess

07870 507749

for all your
electrical needs



We are a locally based

Catering Company

specialising in quality cold finger and fork buffet food for every event, a birthday, wedding, anniversary, funeral or a business working lunch. We offer a bespoke and tailor-made service; our aim is to provide an excellent, friendly and professional service.

For further details please contact

The Spinney Catering Company

Tel: 0118 9722168

Email: info@spinneycatering.co.uk

Website: www.spinneycatering.co.uk

Thinking of moving?

For a free valuation or to enquire about one of the properties in our varied portfolio please contact Richard Beville or Sara Galbraith

Beville
ESTATE AGENCY

✉ info@bevilles.co.uk
🌐 www.beville.co.uk
☎ +44 (0)118 924 25 26
📍 28 Peppard Road
Sonning Common
South Oxon RG4 9SU



A REVIEW OF THE WEEKEND

written by Michael Palin



By BILL PORT

Anyone seeing the name of Michael Palin as the author of a play would assume Monty Python would be well represented – they would be wrong.

Michael Palin's only play, *The Weekend*, has much light humour as well as black and, perhaps surprisingly, a considerable amount of deep emotion and family controversy.

The play is set at the home of Stephen and Virginia Febble in Suffolk in the 90s. All Stephen wants is a quiet life but, to his horror, he finds his long-suffering wife has arranged to fill the house with guests for the weekend.

His daughter, Diana, gormless son-in-law Alan, precocious grand-daughter Charlotte and incontinent dog Pippa, duly arrive. They are joined for dinner by his best friend, Duff Gardener, whose wife, Bridget, is accompanied by Hugh Bedales, her smooth-talking society chiropodist.

The exasperated Stephen reaches, in his usual fashion, for the whisky bottle and fills the house with sarcastic comments and cantankerous behaviour.

The result is an extremely funny play with a dark side lingering just beneath the surface. Ian Miles captures excellently the character of the grumpy, petulant and sulky Stephen. His alcoholic consolation is not overdone and his overbearing dealings with this wife and friends do not get in the way of the comedy. When required, the emotional revelations are well demonstrated.

Virginia, Stephen's wife, has much to put up with but she copes with his sarcasm and gets on with entertaining her guests. Maggie Stokes plays the part to perfection. Cathy Brabben, Paul Muston and Charlotte Broadbent play members of Stephen's family and each character is well portrayed as the actors pick out both the comedy and the tragedy of their parts.

The Gardeners and Bedales, played by Terry Sopp, Heather Cannan and Tom Brabben, added to the comedy, especially in the dinner scene where the best is made of the situation created by a crowded table. The cleaning lady and God are played by Diana Pattinson and Roger Kendal.

Congratulations must go to the director, Geoff Stokes and to the backstage crew who created a smooth running and enjoyable production of which Chiltern Players can be proud.

There is one criticism however, the layout of the programme was confusing. The tradition of listing characters in order of their first entrance has been ignored and the descriptions are in some cases incomprehensible. This made it difficult for those who did not know the play to distinguish the characters.

Nevertheless this was a good evening's entertainments much enjoyed by the audience. ●

NEWS FROM THE LIBRARY

'Friendly Fridays' are starting to get busier! We welcome Scrabble players, knitters and crafters on any Friday mornings from about 10am. Everyone is welcome, even if you just want to come in for a chat and a cup of tea or coffee.

If you'd like some help with learning how to use a computer, or want to improve your computer skills, we can find a volunteer partner to assist you, at a time to suit you – just ask the library staff.

If you're going on holiday and looking for something to read, don't forget we have second hand books for sale

which you can take with you and not worry about leaving behind or dropping in the pool!

Storytimes take place every Saturday at 10 am, and our next 'special' storytime will be on 20 June which is the day before Fathers' Day. Visit the library on that date to make cards and small gifts for your dads. (Home-made cakes and drinks will also be on sale)

For the younger children we have Rhymetimes on the 1st and 3rd Mondays of every month, at 10am, run with the help of the Rainbow Children's Centre.

Finally - a reminder that this year's Summer Reading Challenge begins in mid-July, with children encouraged to read at least 6 books during the long summer holidays, in return for small rewards. The theme for this year is 'Record Breakers', and there will be record-breaking storytimes on every Saturday in August, with differing crafts to try.

For more information on any of these topics contact the library in Grove Road on (0118) 7922448 ●

Help For Separated Families

Family Mediation

divorce/finance/children/property

Seek Professional Help – FMCA accredited

www.csmfamilymediation.co.uk 07591 085389

Studio One

*Classic Pilates, Hatha and Kalinga Yoga,
StudioBarre and StudioStretch*

Studio One, Hayden Farm, Nuffield,
info@studioone.uk.com, www.studioone.uk.com

*I am a BSc Sports Therapist and Level 3
Personal Trainer based in Emmer Green
and trained in:*

- Sports and Remedial massage
- Injury assessment and diagnosis
- Rehabilitation of injury
- Training injuries back to full strength and fitness
- Personal training
- First aid and Trauma management

www.stevietherapy.co.uk

or call Stephanie Oldfield

07581 796303



SPRUCE MAINTENANCE SERVICE

For all your property maintenance requirements:

- ♦Decorating - inside and out
- ♦Paper Hanging
- ♦Carpentry - including door easing & hanging
- ♦Wall & Floor Tiling & Silicone Renewal
- ♦Plumbing - leaking taps etc.
- ♦Patio's, Landscaping & Garden Design
- ♦Hedge Cutting & Planting

Pass on your TO DO list

ROB SMITH Tel: 0118 972 4560

WEE-COT SEATING

*Upholstery, Loose Covers,
Replacement Cushions, Chair
Caning, French Polishing
& Furniture Repairs*

LIZANNE SMITH

TEL: 0118 972 4560



A.B. WALKER

& SON LIMITED

FUNERAL DIRECTORS EST. 1826



SELECTED
Independent
FUNERAL HOMES

Arranging a funeral can be stressful and demanding. Five generations serving Sonning Common; we believe we will make a difference.

For 24 hour assistance:

Henley-on-Thames 01491 413434

Caversham 0118 947 7007

Reading 0118 957 3650

Also at Thatcham, Bracknell and Wokingham

For flowers, donations and further information:

www.abwalker.co.uk



TOM FORT GADGETS

I have a new book coming out in May (no, this is not a plug for it – though if anyone did feel inclined to buy a copy I'd be deeply, almost pathetically grateful). It's an anxious time.

Leaf-blowers are indefensible. There is nothing you can do with a leaf-blower that you can't do better with a rubber rake, minus the racket. I feel much the same about trimmers, whose snarling, grating ear-piercing tone is even worse – though I will, reluctantly concede that they CAN have their uses in those corners where the lawnmower cannot reach.

Mowers do, I think, justify their decibel levels (I did use a push-mower for a time, but it is terribly hard work). And the occasional outing for the chain-saw and the electric hedge-trimmer is acceptable.

But leaf-blowers! Never!

Coming into the kitchen from the garden, gadgets proliferate. Personally I've never had a need for a microwave, but I accept that there plenty of households whose members would probably starve without one. But the same cannot be said for the ice-cream maker that someone somewhere thought would make a good wedding present. Does anyone ever make ice cream thus? And the spaghetti machine? Does anyone ever use one?

I remember my granny (she was a great one for gadgets) coming one day armed with an electric carving knife. Meat flew in all directions amid a dreadful high-pitched whine, and my mother banned the thing forthwith.

But the award for the most useless and irritating piece of kitchen equipment

(I am not mentioning the elasticated toast rack that my mother-in-law gave us) must be the humble garlic crusher. Elizabeth David, not one to mince words, called them "ridiculous and pathetic". Garlic should be chopped, never crushed, and those that disagree should be forced to waste their time trying to wash up the beastly things as a punishment. ●



COOKS CORNER

By SANDY ONOFRIO

COOK'S CORNER

Summers here, lets hope it stays for a long, long time. In case you're all barbecued out here are a couple of recipes that are ideal for 'al fresco' dining. The salmon is a lovely, easy to prepare, dish which is light but satisfying. The bread is great with crudités or a delicious baked Camembert or could even accompany the salmon dish along with a green salad. Enjoy those light summer evenings!

CREAMY SALMON PASTA - serves 4

6 tbsp butter 500ml semi skimmed milk (warmed)
 ½ onion (finely chopped) 60g grated pecorino/
 parmesan cheese
 1 clove garlic (finely chopped) 150g thawed
 garden peas
 2 tbsp plain flour 300g smoked salmon
 (or 1 tin 213g pink salmon)
 Packet of pasta - tagliatelle works well



Bring a large pan of salted water (with a drop of oil) to the boil and cook pasta for 10 to 12 minutes (or according to packet instructions). Meanwhile melt butter in a large frying pan, saute onion and garlic until tender (5 mins). Stir in the flour and cook off for 2 mins, gradually add milk, stirring constantly, bring to boil and cook for 2 mins. Add cheese, stir until smooth and add peas. Reduce to a very low heat and continue to cook for a further 4 mins. Toss in flaked salmon (or tinned salmon) and heat through for a final 2 mins. Drain pasta well and pour salmon mix over the top ●

BRAIDED CHALLAH - makes 2 loaves

4 tbsp caster sugar 3 eggs - slightly beaten
 1 tbsp salt 750g plain flour
 4 tbsp vegetable oil 1 egg (beaten) for glazing
 300 ml warm water 2 tbsp poppy seeds (optional)
 1 tsp/1 sachet dried active yeast



Place sugar, salt, oil, hot water and yeast in a large bowl, mix well and add the eggs. Add flour and continue to mix with a wooden spoon and then with your hand. Turn out on to a floured surface, knead until smooth (approx 10 mins). Place dough into a greased bowl, turn to coat all surfaces, cover with a clean, damp tea towel and leave to rise until double the size. Punch down the dough, re-knead and recover allowing it to rise for a second time (Two risings make for a lighter dough but if you're pushed for time just do the one). Once risen divide in half and divide each half into 3 equal pieces. Roll each piece into a long sausage shape, push tops together and make a plait. Repeat to make the second loaf. Place on a greased baking tray, cover and allow to rise until doubled in size. Brush with beaten egg and sprinkle with poppy seeds (optional). Bake at 180c/Gas 4 for 35 minutes. Allow to cool on wire rack ●

Advertise in the
sonningcommon magazine

Delivered to 1,850 addresses

Prices from just **£27** per issue
for an advert this size

Perfect for local businesses
and tradesmen

Call John Pearman to find out more on 0118 972 2381
or email advertising@sonningcommonmagazine.org

Fed up with limescale?

*A Water Softener
would be your solution*

Compass Water Softeners

SALT, SALES, SERVICE, INSTALLATION

0118 972 3773 0118 941 0869 0796 700 9838

www.compasswatersofteners.co.uk

Email: martin@compasswatersofteners.co.uk



Set in an idyllic village location, our small, friendly pre-school creates a very special environment for children guided by a team of highly qualified, caring staff. Please contact us for details.
registrar@keps.co.uk

With excellent links to Kidmore End Primary School and only 5 minutes from Caversham, Sonning Common, Peppard and Emmer Green.



Kidmore End Pre-School, Parish Room
Wood Lane, Kidmore End, Reading RG4 9BB
Registered Charity Number 104 6030
www.KidmoreEndPreSchool.co.uk

Sonning Common Pet Care

At Home Pet Care

when you are on holiday or at work

Cats

Daily visits to clean, feed and pamper

Small Pets

Home visits to care for your Rabbits, Guinea Pigs, Hamsters, etc

Dog Walking

Regular or occasional walks

Puppy Visits

To feed, play, toilet break and clean up

Please call Alison for further information

Tel 0118 9722948 / 07787 114536



Really Good Food

Large Garden

Children's Play Area

Dogs Welcome

Disabled Access



The Red Lion
Peppard Common
Traditional Country Pub
01491 628329

Opening Times

Mon 12.00 - 9.30

Tue 4.30 - 9.30

Wed-Fri 12.00 - 11.00

Sat 11.30 - 11.00

Sun 11.30 - 9.30

Kitchen

Mon 12.00 - 2.45 & 6.00 - 8.45

Tue 6.00 - 8.45

Wed-Sat 12.00 - 2.45 & 6.00 - 8.45

Sun 12.00 - 2.45

V.A.G. GARAGE SERVICES

SUMMER SPECIAL AIR CONDITIONING RE-GAS £40

A Family Run Garage Offering:

- ◆ MOT £45
- ◆ Tyres Supplied & Fitted
- ◆ Wheel Balancing
- ◆ 4 Wheel Alignment
- ◆ Black Circle Tyres

Servicing for ALL Makes & Models

Unit 22, Manor Farm, Peppard Common, Oxon, RG9 5LA, 01491 628386

ARCHERY CLUB BEGINNER'S COURSES



Did you know that there is an archery club based at Abbey Rugby Club?

The club was formed in 1951 at a meeting held in The New Inn public house in Kidmore End village. The members shot on a field at the rear of the pub and according to records, distances were 40 or 50 paces on Mondays and Thursdays and 60 paces on Tuesdays and Fridays.

In 1970 the landowner decided he no longer wanted the club to use the land. After much searching the newly formed Abbey Rugby Club agreed to allow the use of the land we have now. The name was

changed to South Oxon Archery Club as the rugby club ground is just in Oxfordshire.

Their beginners courses are very popular and numbers are limited and often oversubscribed.

Please see the website and facebook links below for more information and contact details.

www.facebook.com/pages/South-Oxon-Archery-Club/571283132964632

www.soac.org.uk/about-us/contact-us ●

HEALTH WALKS

The bluebells looked marvellous as usual this year, but now we're striding into summer and (hopefully!) warmer weather.

Health walking is for fitness – and it's friendly, fun and free! The walks are for everyone, whatever their age and ability, and are graded accordingly. They're especially beneficial for those who currently, for whatever reason, do little or no exercise.

Timetables are available from the Health Centre, the library and the Herb Farm, or at www.sonningcommonhealthwalks.co.uk. If you'd like to talk to someone about the health walks, or more information, phone Colin Davies on (0118) 9722527. Come and join us! ●



NEIGHBOURHOOD WATCH

Neighbourhood Watch is the largest voluntary organization in the U.K. It is run by volunteers in the community and is the best known and most effective example of the police and community working in partnership to reduce crime, build safer communities and improve quality of life.

Being part of a Neighbourhood Watch scheme can help you and your neighbours to work together in identifying and tackling specific problems, making your community a safer and friendlier place to live. Watch co-ordinators are invited to attend meetings with local officers to discuss any local issues or problems and they are sent messages about crime in the area and receive crime prevention packs. Members

of Neighbourhood Watch may also be entitled to a discount on home insurance.

Neighbourhood Watch started in the village in 1992 under Eric Wyatt who retired in 2006. It is now run out of the police office. We have currently 67 watches covering about 98 percent of residences. We are opening another watch and re-activating three where co-ordinators have left. There are only 2 streets which lack schemes: Elm Court and Heather Close. We are also looking for replacements for co-ordinators who have left in: Kidmore Lane, Brinds Close and Isley Close.

If anyone is prepared to act as co-ordinator in these streets please contact me or drop into the Lea Road Police Office. The work is minimal but the watch provides a direct contact

with the local police to receive notice of any situations affecting the area and to advise the police of areas of concern.

We believe that Neighbourhood Watch working closely with local police officers is responsible for the relatively low incidence of crime in the village.

**Mike Brennan, Area Coordinator
Sonning Common Group
Tel: 0118 972 4308, email:
brenmiguel@btinternet.com** ●



ALL MAKES SERVICING

Caring for all your motoring needs for over 50 years!



- ✓ BOSCH Diagnostics
- ✓ Service & Repair
- ✓ Air Conditioning Service & Re-Gas
- ✓ ATA Highly Qualified Technicians
- ✓ Free Collection & Delivery
- ✓ Courtesy Cars Available

Sonning Common Vauxhall

0118 972 2021

Peppard Road, Sonning Common, Reading RG4 9SU

CUSTOMER EXCELLENCE WINNER

Service Open: Mon-Fri 8am - 6pm • Sat 8.30am - 12.30pm • Sun CLOSED

www.sonningcommonvauxhall.com



£10.00 OFF

your next MoT on production of this voucher



TEXTUREPLUS

Free Estimates

Interior & Exterior Decorating

Artexing & Coving / Solving Artex Problems

Floor & Wall Tiling / Wallpaper Hanging / Plastering

Kitchens / Bathrooms / Roof & Guttering Maintenance

Carpentry – Doors + Architraves + Skirting

COMPLETE HOME IMPROVEMENTS

(Quality Comes As Standard)

30 Years Experience / NHBC Awarded / PPL Insured

Insurance Work Undertaken

Tel: 0118 972 1442 or Mobile: 07880 542363

Based in Sonning Common

PODIATRY/CHIROPODY CLINIC

Sonning Common

For enquiries & appointments call

Heidi Snookes-Owen

B.Sc., D.Pod.M., M.Ch.S.

HCPC REGISTERED

0118 972 4742

PILATES ABC, HENLEY.

**CLASSES: SONNING COMMON, HENLEY
& HURLEY. BEGINNERS WELCOME**

07521 699265 alyth@pilatesabc.co.uk

www.pilatesabc.co.uk

More properties and More sales than any other local agent*



In 2014 Davis Tate Sonning Common advertised more property in your postcode than any other local agent, and agreed a higher level of actual sales than any other agent.

Our business LET 86% of instructions.

In 2015 we enter our 25th year of successful trading. So if you're thinking of moving in 2015, please call us to share our success in the local property market.

Contact us on 0118 972 4242

or sonningc@davistate.com

*Source Rightmove 1/1/14-31/12/14 for areas RG9 5, RG4 9

If you have instructed another agent on a sole agency and/or sole selling rights basis, the terms of those instructions must be considered to avoid a possible liability to pay two commissions. However asking us to visit is FREE.



Julie Norman MANAGER



Joanne Parker SALES AND LETTINGS NEGOTIATOR

The facts speak for themselves. We're #1

 **davis tate**

ALL PROPERTY MATTERS

ON YOUR BIKE 2015



“What an amazing day!” said On Your Bike organiser, Tina Micallef.

Six hundred people cycled and dozens more helped by marshalling the riders out on the roads, cooking and serving in the cafe, checking riders in and out, fixing bikes and other activities behind the scenes!

Out of the six hundred riders, around a quarter cycled the 6 mile route, another quarter cycled the whole 20 miles and half cycled the 12 route. And let's not forget the toddlers who pedalled and scooted around the playground circuit.

Well done to Ben Lawrence, 4, and Odette Lewis, 4, both from Sonning

Common Preschool, who pedalled their way around the six mile route with their families.

OYB 2015 raised almost £4000. Half the money raised will go towards creating a new & much needed **children's orthopaedic unit** at the **Royal Berkshire Hospital in Reading**. The other half will go towards buying new equipment for the primary school.

Next year's On Your Bike is our tenth anniversary ride, so we're planning to make it even more special. We'd love to see as many people who've taken part over the years come and celebrate with us. So put the date in your diaries now - roll on Sunday 24 April 2016! ●



DAISY'S AT THE DOG

ADVERTORIAL

Local well known business woman Beverly Dobson decided it was time to move on - having established a very popular and successful café at the herb centre. The Dog on Peppard Common had been in her sights for a while, having viewed it previously as a possible venue, she explained 'this was the right time to expand.' The move has given the opportunity to open in the evenings and provide an even more welcome environment for families and children. The Barn will be re-furnished and heated, child friendly wood flooring with ditsy plastic cloths on the tables; a soft play area and plenty of room for pushchairs. This is sure to become a very popular area for parents with small children.

There is a wide choice of menu, including gluten free and vegetarian and many old favourites, 'Golfers are now popping in for a full English breakfast after a game - away from the eye of their wives' Beverly joked. She likened the offer at Daisy's to an American diner 'You can eat what you like when you feel like it'. Drinks can be ordered at any time and there is no compulsion to purchase food, from 9am to 9pm, with meat (from Carl Woods) and veg sourced locally.

Already there are lots of new customers and regulars return two or three times per week. It may well be that Daisy's has found the niche market with the Carvery, open from 6.30p, to 9pm and lunchtimes on Sunday. Menu items

are priced at under £10 and Beverley is determined it will stay at these affordable prices.

So this 250 year old building, which must have seen so many changes is now thriving and for those who know Beverly very well, it will come as no surprise, dogs are welcome too! ●



Parish news

The content of this page is the sole responsibility of, and is paid for by, Sonning Common Parish Council

NEW PARK IS 'GREAT!'

After decades of hoping and wishing Sonning Common finally has a skatepark.

Work on the £100,000 skatepark, in the bottom corner of the Bishopswood Sports Ground, was completed on 7 May - just six weeks after it began.

The park, provided by Sonning Common Parish Council, is open from dawn to dusk and can be accessed via public footpaths from Woodlands Road and Old Copse.

It is ideal for use by skateboards, scooters, BMX bikes and in-line skates and incorporates easy and more challenging areas for users to progress to.

Parish councillor Carole Lewis was the driving force behind the park's creation. Speaking at the park's opening, she said: "I think it's fantastic. The fact that the concrete was barely dry before the youngsters were on it shows how excited they are to have a skatepark.

"I think it will provide much-needed recreational space for teenagers in the village. Having got the skatepark, we want to make it work and we are hoping to form a management group - made

up of users, parents, residents and councillors - to take the park forward."

For now the immediate priorities are to tidy up the area, protect the new grass and install seating and bins. Future plans include developing a social and recreational area at the side of the park and arranging skateboarding workshops.

Douglas Kedge, chairman of the parish council, expressed his delight at the park's opening: "After two to five years of hard work we have a quite remarkable achievement at the end of it."

Councillor Dirk Jones added: "We have lots of kids in Sonning Common and we need to have facilities for them."

Twelve-year-olds Charlie Wagstaff and Max Miller and Jack Stevens, 14, gave the park a big thumbs-up on opening evening. "It's great!", they said.

Sonning Common Skatepark has been a long time coming. In 1983 Sonning Common Magazine records a desire from young residents for a BMX track in the village.

A notice in the April 2003 edition reads: "There is the possibility of a



skateboarding ramp being constructed on the unused area of scrub and dead elm trees at the lower edge of Bishopswood Recreation Ground."

Thirty-two years down the line and that's where it is. Plans are now underway for a formal opening event in the summer.

Designed by Wheelscape, Sonning Common Skatepark was sponsored by Lafarge Tarmac and South Oxfordshire District Council. ●



MOVING OUT, MOVING IN

Councillor Jo Hunt has stood down from the parish council after 27 years of serving the community. Miss Hunt, of Grove Road, joined the council when she was just 21 and has also served as a district councillor. She said: "The council has been a huge part of my life and I will miss it."

Council chairman Douglas Kedge said: "For Jo to serve the council for 27 years is remarkable. She has held every major role and has made a huge contribution to the village."

A sad goodbye was also said recently to Councillor Gail Noble, who joined the council in 2011 and served as a very successful chairman of the planning committee. Residents David Richens and Stan Rust have been co-opted on to the council to replace Jo and Gail, bringing the total number of parish councillors to 12. ●

Sonning Common Parish Council
Parish Office, Village Hall, Wood Lane, Sonning Common RG4 9SL
T: 0118 972 3616

E: clerk@sonningcommonparishcouncil.org.uk (Philip Collings)
deputyclerk@sonningcommonparishcouncil.org.uk (Ros Varnes)
W: www.sonningcommonparishcouncil.org.uk



Church news

The last word ON BOUNDARIES?

Now that the changes that have taken place to the civil parish boundaries, nothing has happened to the Ecclesiastical Parish boundaries. By the Order in Council of 1st June 2003 creating the Benefice of Rotherfield Peppard, Kidmore End & Sonning Common it is stated that both Ecclesiastical parishes shall remain 'separate and distinct' and although they indeed do some things together, and put up with the same Rector, organisationally they remain distinct.

Early on in my time as Vicar of Kidmore End, I sent a couple to Bob Butler-Smith, as Rector of Peppard, only to have them sent straight back here, bearing the message 'Learn your parish boundaries'. Suffice it to say, The Greyhound is in the Ecclesiastical Parish of Kidmore End and the relevant address was in that area. I had better add here that Kidmore End School's catchment follows the civil parish boundary!

Both my parishes predate Parish Councils. Peppard is an ancient parish, which used to have a narrow frontage on the Thames via a footpath by Gillotts School, down to Peppard Lane and thence to Mill Lane, but which now ends at Gillotts Corner where it joins the Ecclesiastical parishes of Harpsden and Greys. Henley Town Green is in the Ecclesiastical Parish of Rotherfield Peppard.

St John's Kidmore End was built as a daughter church to St Peter's Caversham (when Caversham was still in Oxfordshire). In 1868 an Ecclesiastical Parish of Kidmore End was formed out of part of the Parish of Caversham and part of the Parish of Sonning and today's parish boundaries run along the former boundaries of those parishes. The arms of St Peter (Caversham) and St Andrew (Sonning) are in mosaic on the pulpit at St John's.

These several boundaries may lack a certain amount of logic today but bear

in mind there were vastly fewer houses and many boundaries simply ran along ancient footpaths. Indeed, Kidmore End's northern boundary lies along a footpath in the woods between Cane End and Exlade Street (if you know which one it is). This is why Beating the Bounds took place (and still does in Peppard).

Before civil parishes came into being in 1894, clearly defined as secular authorities, some of their duties fell upon the Churchwardens. They were Overseers of the Poor and I suspect the cross on the top of Kidmore End's well shows there was a church responsibility for the provision of clean water.

Today's four churchwardens get asked to do many things but no longer have to keep a spare key for the well handy, nor help a passing stranger taken ill on Top Common – the origin of burial rights in the parish in which you lived, or died. ●

GRAHAM FOULIS BROWN

JUNE 2015

WEDNESDAY 3	Village Coffee Morning hosted by Sonning Common Women's Institute. Open to all. Raising funds for local community projects - Village Hall	10.30am - 12noon
SUNDAY 7	Felt-makers get together. Bring lunch and a project to work on - Village Hall	10am - 4pm
MONDAY 8	FISH - Tea party - Village Hall	2.30pm
MONDAY 15	Royal British Legion Women's Section - Members' Garden Party. Call 0118 9723750 for details	
MONDAY 15	Sonning Common Parish Council - Village Hall	8pm
THURSDAY 18	FISH - Pub lunch	11.30am
THURSDAY 18	Sonning Common Women's Institute - "Belly Dance: from North Africa to America", a talk by Sonia Matthews. Visitors welcome - Village Hall	7.30pm
SUNDAY 21	Wallingford Model Railway Exhibition - St John's Primary School, Paddock Road, Wallingford OX10 9AG	10am - 4.30pm
THURSDAY 25	FISH - Henley Farmers' Market	
SATURDAY 27	Nottakwire's Summer Fund-Raiser - 'Thank you for the Music' - Village Hall	Doors open 1pm Performance 2pm
SUNDAY 28	Sonning Common Pre-school Summer Fair - Sonning Common Pre-school garden	11.30am - 2pm
SUNDAY 28	Nottakwire's Summer Fund-Raiser - 'Thank you for the Music' - Village Hall	Doors open 1pm Performance 2pm

JULY 2015

SUNDAY 5	Felt-makers get together. Bring lunch and a project to work on - Village Hall	10am - 4pm
MONDAY 13	FISH - Tea party - Village Hall	2.30pm
WEDNESDAY 15	Summer Festival - Chiltern Edge School	
WEDNESDAY 15	Village Coffee Morning hosted by Sonning Common Women's Institute. Open to all. Raising funds for local community projects - Village Hall	10.30am - 12noon
THURSDAY 16	FISH - Pub lunch	11.30am
THURSDAY 16	Sonning Common Women's Institute - 'Hearing Dogs for Deaf People', a talk by Rosemary Edgington. Visitors welcome - Village Hall	7.30pm
MONDAY 20	Royal British Legion Women's Section - Bring & Buy and Quiz - Batten House	2pm - 3.30pm
MONDAY 20	Sonning Common Parish Council - Village Hall	8pm
THURSDAY 23	FISH - Henley Farmers' Market	

The FISH Volunteer Centre runs regular door-to-door shopping trips to Tesco in Henley every Monday morning and to Henley Waitrose, Henley Farmers Market, Morrisons in Reading and Reading Town Centre every month.

The programme of shopping and leisure trips for each month is published and distributed on 20th of the preceding month and bookings are taken from that date. Copies of the programme are available the FISH Volunteer Centre, Sonning Common Library, the Christian Community Action shop, Pet Country Supplies and on request from Carson's Chemist. The monthly programme of trips is posted on noticeboards in both Peppard and Sonning Common.

Details of all minibus trips can also be found on the FISH website www.fishvolunteercentre.co.uk

For more information and to book any trip call **0118 972 3986** any weekday between 09.30 and 11.30 a.m. ●



Talullah
nails

Talullah Nails specialising in Bio Sculpture Gel

A long lasting & chip-proof nail treatment!

Perfect for special occasions...
or just everyday chic!

Christine Ullah - Nail Technician
T: 01491 682982 M: 07791 256853
Northam House, Main Street, Stoke Row, RG9 5QR
chris@talullahnails.co.uk www.facebook.com/TalullahNails

Computer Problems?

Free quote, no fix no fee, no call out charge

Over 200 happy customers in
Sonning Common.




Milo and Michael Harper

Milo Technical Support
22 Sedgewell Road

0118 972 4905

HENLEY GLAZING AND WINDOW CENTRE LIMITED

Incorporating



01491 629901
Glass Supply, Glazing Service,
Mirrors, Shelves, Tabletops,
Sealed Units, Lead Lights,
Locks, Secondary Glazing,
Shower Screens

0118 9419210
Suppliers and Installers of:
UPVC, Aluminium and
Timber Windows
Doors and Conservatories
Fascias, Soffits and Guttering

FENSA
Registered Company

Workshop: Unit 12, Manor Farm, Peppard Common, Henley-on-Thames RG9 5LP
Fax: 01491 629904 Email: henleyglazingwindow@yahoo.co.uk

TANDOORI

Connoisseur

*Come & Experience authentic
Tandoori & Bengali Cuisine*

★ Fully Air-Conditioned
★ Large Groups Catered For
★ Open 7 Days a Week

**21 Wood Lane
Sonning Common
0118 972 3104 / 972 1054**

TAKE-AWAY MENU
We Guarantee Prompt Service on All Orders

S J HINTON

Carpenter & Joiner

Wide range of high-quality carpentry
services delivered by skilled craftsman

Built-In Wardrobes, Cupboards, Shelving.
Kitchen Fitting, Doors, Floors, Windows,
Stairs, Roof Construction.

**Telephone Steve on 0118 972 3602
or 07887 653866**

Sonning Common Beauty

12 Newfield Road Telephone 0118 972 3059
www.sonningcommonbeauty.co.uk

- MANICURE • PEDICURE • ORGANIC FACIALS
- MD FORMULATIONS GLYCOLIC PEELS
- WAXING • LASH AND BROW TREATMENTS
- SPRAY TANNING • MAKE-UP • MASSAGE
- BRIDAL HOLIDAY AND MUM-TO-BE PACKAGES AVAILABLE

Gift Vouchers Available
Some reduced price treatments available each
week please ring to check availability



Sonning Common Health Centre
Wood Lane, Sonning Common,
Reading, RG4 9SW

- Back & Neck pain
- Muscle / Joint Strains
- Ligament Sprain
- Sports Injuries
- Whiplash Injuries
- Shoulder Injuries
- Post-Operative Rehabilitation
- Pre / Post Natal Exercise
- Respiratory Conditions
- Lower Limb & Foot Problems

- Appointments available every day
- Pilates classes throughout the week

Jo Pereira MCSP
Catherine Matthews MCSP
Chartered Physiotherapists

T: 01189 722 745

E: info@functionalphysio.co.uk

www.functionalphysio.co.uk

The team at Functional Physio are Chartered Physiotherapists registered with the Health Professions Council and are recognised by all major insurance companies, including Bupa and Axa PPP.



noble intentions
landscape garden design

Professional
advice, design &
planting for your
garden.

Call Gail Noble
on 0118 972 3214
www.noble-intentions.com



High quality education and child care under the
Early years foundation stage (EYFS) for children
4 months to 5 years

- *Good OFSTED report*
- *Pre-school sessions available*
- *Open all year, Monday to Friday, 7am to 7pm*
- *Flexible hours*
- *Early years education grants available*
- *Curriculum includes French, Music & Movement and Thames Valley Gym*
- *Small friendly and personal care in Sonning Common*

For further information, please ask for the manager
on 0118 972 4783, or visit our website.

www.alphabetdaynurseries.com

emails: info@alphabetdaynurseries.com



Daisy's at the Dog

Coffee Shop and Carvery

01491 628 343

Breakfasts – from coffee & croissants to full English

Light Lunches, daily specials and naughty desserts

Homemade cakes and traditional cream teas Antipasti boards and cocktails

All served from 9am to 9pm every day (until 4pm on Sundays)

Home cooked CARVERY served from 6.30pm Mon to Sat & 12.30 to 4.00pm on Sunday

Fully Licenced from 10am offering wines, spirits, beers, lagers & cocktails

Beautiful gardens now open

Daisy's at the Dog, Dog Lane, Peppard Common, Henley-on-Thames, Oxfordshire, RG9 5JU.

www.daisyscoffeeshop.com. See our website for more details on our opening times.



Fed Up With Call Centres

Barrs Insurance

Mark & Helen Richards
Your Local Insurance Brokers
For The Unusual & The Usual
Let Us Take Care Of Your Insurance

- House & Contents
- Business
- Liabilities
- Travel
- Landlords
- Professional Indemnity
- Horse
- Shops
- Sickness / Accident
- Commercial / Unusual Vehicle

If It's Not listed We Still Can Help
All Types Of Insurance Enquiries Welcome

0118 924 2603

mail: info@barrs-insurances.co.uk

www.barrs-insurance.co.uk

Unit 2, Kidby's Yard, Kennylands Road, Sonning Common RG4 9JT
Authorised and Regulated by FCA



Tai Chi Classes



Do you need to improve your
balance, coordination or strength?

Want to improve your sense of wellbeing?

Gentle mind, body and spirit exercises
Ideal for all ages and any fitness level

Tuesdays 19:00 - 20:30
Sonning Common Village Hall

Contact Karen on 07867 954 786
www.karenpounds.co.uk